

160 MOUNT VERNON STREET

BEACON HILL ARCHITECTURE COMMISSION APPLICATION

OCTOBER 27, 2021



SHEETS:

- C-1** COVER SHEET
- A-1** PHOTOS OF EXISTING NORTH ELEVATION
- A-2** PROPOSED NORTH ELEVATION
- A-3** PHOTOS OF EXISTING SOUTH ELEVATION
- A-4** FRONT LIGHT SPEC SHEET
- A-5** WINDOW CUT SHEET

LOCUS MAP:



NOT TO SCALE



NEW SURFACE MOUNT LIGHT FIXTURE.
SEE CUT SHEET.

EXISTING EXTERIOR DOOR,
PAINT COLORS, HARDWARE, ETC
TO REMAIN.



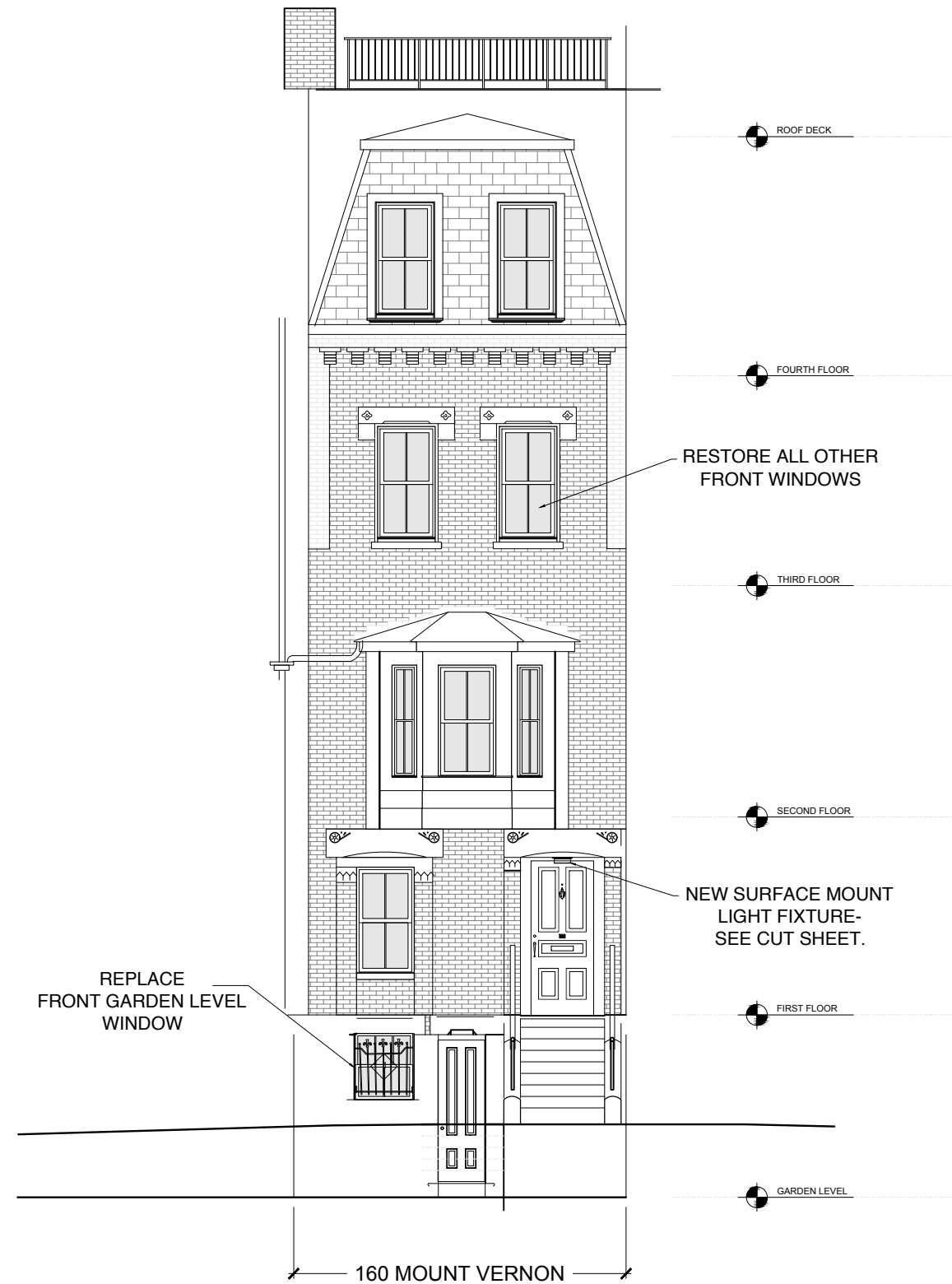
TWO VENTS IN WINDOW TO BE
REMOVED

EXISTING WROUGHT IRON GRATE
TO REMAIN

WINDOW TO BE REPLACED WITH
BOSTON SASH 2/2.

REMOVE WATER SPIGOT FROM WINDOW

NEW LOCATION FOR WATER SPIGOT





REPLACE (2)
MARVIN REAR
FOURTH FLOOR
WINDOWS
W/ BOSTON SASH 2/2.

ALL OTHER REAR
WINDOWS
TO BE RESTORED.



existing photos of rear South Facade at 160 Mt Vernon

THE URBAN ELECTRIC CO.



PORTE

HANG REGULAR

MA-1705HR

DIMENSIONS

Width	12in
Height	3.5in
Depth	12in

MOUNTING

Recommended Installers	1
Weight	9lbs
Canopy	12in x 12in
Junction Box	4in oct/rnd



LAMP / WIRING

Max Wattage (1) 30W LED
Ships with complimentary LED panel



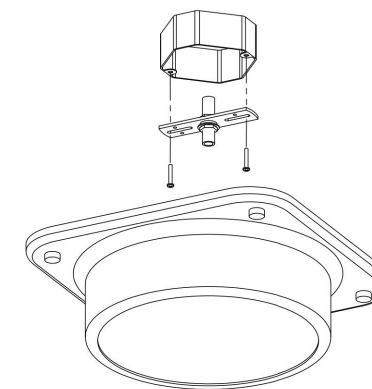
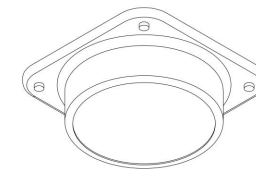
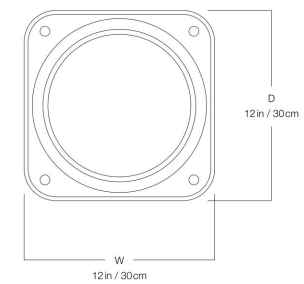
RATING

Suitable for DAMP locations
UL Listed

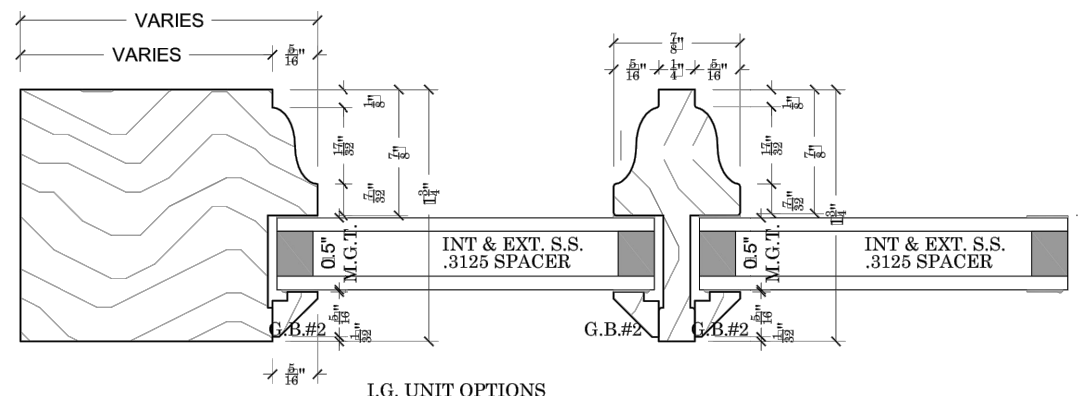


PATENTS

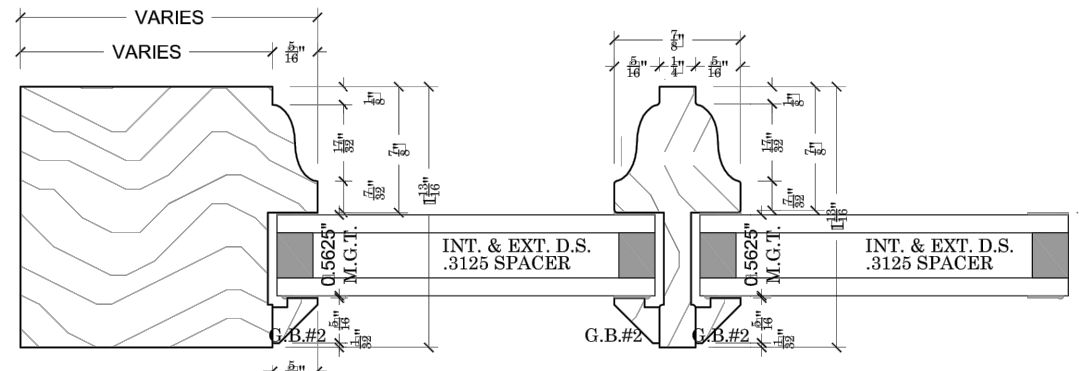
This fixture is Patented with the United States Patent and Trademark Office. Patent No. D834,236 November 20, 2018




© 2022 The Urban Electric Co.



I.G. UNIT OPTIONS
 OPTIONAL INT OR EXT DOUBLE STRENGTH
 ANNEALED OR TEMPERED
 ARGON WITH EXT LOW-E I-89



I.G. UNIT OPTIONS
 ANNEALED OR TEMPERED
 ARGON WITH EXT LOW-E I-89

 SASH & MILLWORK 667 SPRING STREET NORTH DIGHTON, MA. 02764 PHONE # (508) 880-8808 FAX # (508) 880-8828 WWW.BOSTONSASH.COM	JOB: B.S. & M. STANDARDS PROFILE & GLASS OPTIONS		DRAWN BY: KEITH KUTHAN	
	DESCRIPTION: BEACON HILL PROFILE ALL UNITS		JOB NO: B.S.S.	DWG. NO: SK-1.6
			DATE: 1/11/2015	
			SCALE: F.S.	SHEET: 7 OF 10



160 MOUNT VERNON

BOSTON, MA 02108

SCALE:	DRAWING NAME:	SHEET NUMBER:
DATE: JANUARY 1, 2022	WINDOW CUT SHEET	A-5