



*Improvements to*  
**McGann Playground**  
**Hyde Park**  
Community Meeting #2



September 22, 2021  
Boston Parks and Recreation



An aerial photograph showing a residential neighborhood with a mix of houses and trees. A large green golf course is visible on the left side of the image. A yellow dot is placed on a paved area in the center, with a yellow line pointing to it from the text 'McGANN PARK'. The street 'WEST STREET' is labeled in white text on the right side of the image.

**McGANN PARK**

# PROJECT OVERVIEW

# MEETING RECORDING



The Boston Parks and Recreation Department will be recording the meeting and posting to our project webpage for those who are unable to attend the Zoom meeting live.

It is possible that participants may also be recording the meeting with their phones cameras or other devices. If you do not wish to be recorded during this meeting, please keep your microphone and camera off.

# VIRTUAL MEETING ETIQUETTE

We want to ensure this conversation is a pleasant experience for all and that all community members/ stakeholders are comfortable sharing their comments, questions and feedback.

Please be respectful and mindful of each other's time when asking questions/ providing comments, so that all attendees are able to participate in the meeting.

Keep questions/ comments project-specific and not personal to yield solution-driven discussion.

Please wait until all attendees have had the opportunity to ask a question/ provide a comment before providing additional questions/ comments.

You can always set up a conversation with Lauren Bryant, [Lauren.Bryant@boston.gov](mailto:Lauren.Bryant@boston.gov) to further discuss the project or process.

# ZOOM TIPS

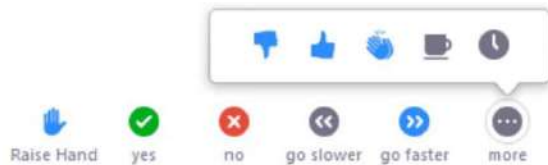
Here is how you can participate during the question and answer part of the presentation.

## DURING THE PRESENTATION:



### VIA WEB:

Turn video on / off.



To use these non-verbal options click on participants (bottom of screen); these options will pop up in side bar.

## DURING THE Q&A:



### JOINING VIA PHONE?

Use \*9 to raise hand to ask for audio / video permission to ask questions or provide comments.



### VIA WEB:

Chat to ask questions / comments or provide responses to poll questions



Raise hand to ask for audio / video permission to ask questions or provide comments.

# AGENDA

---

1

**SCHEDULE + INTRODUCTION**

---

2

**SITE ANALYSIS + MEETING 1 FEEDBACK SUMMARY**

---

3

**PLAYGROUND CONCEPTS + EQUIPMENT IDEAS**

---

4

**LISTENING & DISCUSSION**

---

5

**CLOSING REMARKS & NEXT STEPS**

---

# PROJECT TEAM

---

## **LAUREN BRYANT**

PROJECT MANAGER

[Lauren.Bryant@boston.gov](mailto:Lauren.Bryant@boston.gov) or 617-961-3019

## **CHRISTINE BRANDAO**

OUTREACH COORDINATOR, EXTERNAL AFFAIRS

[christine.brandao@boston.gov](mailto:christine.brandao@boston.gov) or 617-961-3006

## **G2 COLLABORATIVE LANDSCAPE ARCHITECTURE**

Gigi Saltonstall + Lisa Giersbach, Principals

Patricia Noto, Project Manager

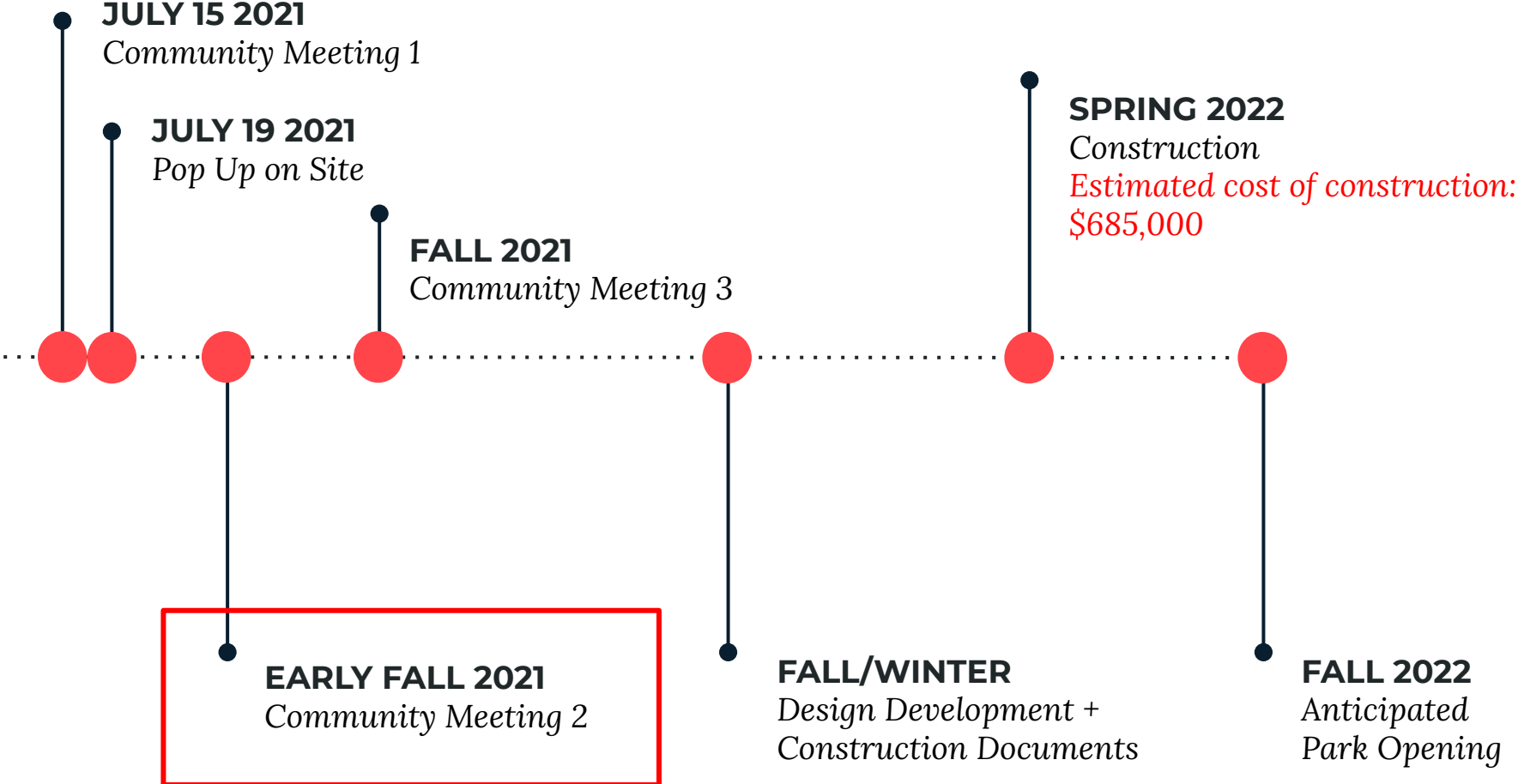
## **DENYEL FONSECA**

OFFICE OF NEIGHBORHOOD SERVICES

[denyel.fonseca@boston.gov](mailto:denyel.fonseca@boston.gov)



# PROJECT SCHEDULE & FUNDING







# CITY OF BOSTON PRIORITIES

---

- **Expanding walkable access to parks**
- **Addressing equity**
- **Climate resilience**
- **Health**
- **Housing and community building**



# PARK & RECREATION GOALS

---

- **Accessible and available to all**
- **Diverse, balanced, and efficient mix of uses**
- **Meaningful and inclusive community engagement**
- **Adaptive and resilient landscapes**
- **Promote connections**



THE **5**  
ELEMENTS  
OF  
PLAY



## **SOCIAL/ EMOTIONAL**

COOPERATION, DRAMATIC +  
IMAGINATIVE PLAY



SEATING + TABLE AREAS,  
THEMATIC PLAY ELEMENTS  
(SHIPS), PLAY HOUSES

## **PHYSICAL**

GROSS MOTOR/ FINE MOTOR SKILLS,  
FLEXIBILITY, ACCESSIBILITY,  
HEALTHY RISK + VARIETY



DISH SWINGS, MOVEABLE  
OBJECTS, SWINGS, MONKEY  
BARS, BALANCE

## **SENSORY**

TOUCH, VISUAL. AUDITORY, SMELL  
VESTIBULAR, PROPRIOCEPTIVE +  
INTEROCEPTIVE



PUSH/ PULL ELEMENTS  
WATER ELEMENTS, VARIED  
TEXTURES + COLORS, SPINNING,  
MOVEABLE OBJECTS, ROCKING

## **COGNITIVE**

CREATIVITY, SENSE OF  
ACCOMPLISHMENT,  
PROBLEM-SOLVING, CAUSE +  
EFFECT, RISK ASSESSMENT



INTERACTIVE WATER ELEMENTS,  
ROPE CLIMBER, LINKED PLAY  
ELEMENTS

## **COMMUNICATION**

DEVELOPMENT OF RECEPTIVE +  
EXPRESSIVE LANGUAGE



TALK TUBES, SLIDES, THEMATIC  
PLAY ELEMENTS, TRIKE TRACK,  
SEE SAWS

An aerial photograph of a residential neighborhood with a golf course on the left. A yellow dot is placed on a paved area in the center, with a yellow line extending upwards to the text 'McGANN PARK'. The area around the dot contains some equipment and is bordered by trees and houses.

**McGANN PARK**

**PREVIOUS ANALYSIS**

# EXISTING CONDITIONS

George Wright  
Golf Course

Lodgehill Rd

West St.

Myopia Rd.

- ← Gated Entrance
- ▭ Playground
- ▭ Lawn
- ▭ Vegetation
- ▭ Existing Wall
- ▭ Existing Fence
- - - Site Boundary
- ▭ Seating/Table
- ⊠ Bus Stop

▲ 1"=60'



# ACTIVITY DIAGRAM

George Wright  
Golf Course

Lodgehill Rd

West St.

Passive Play

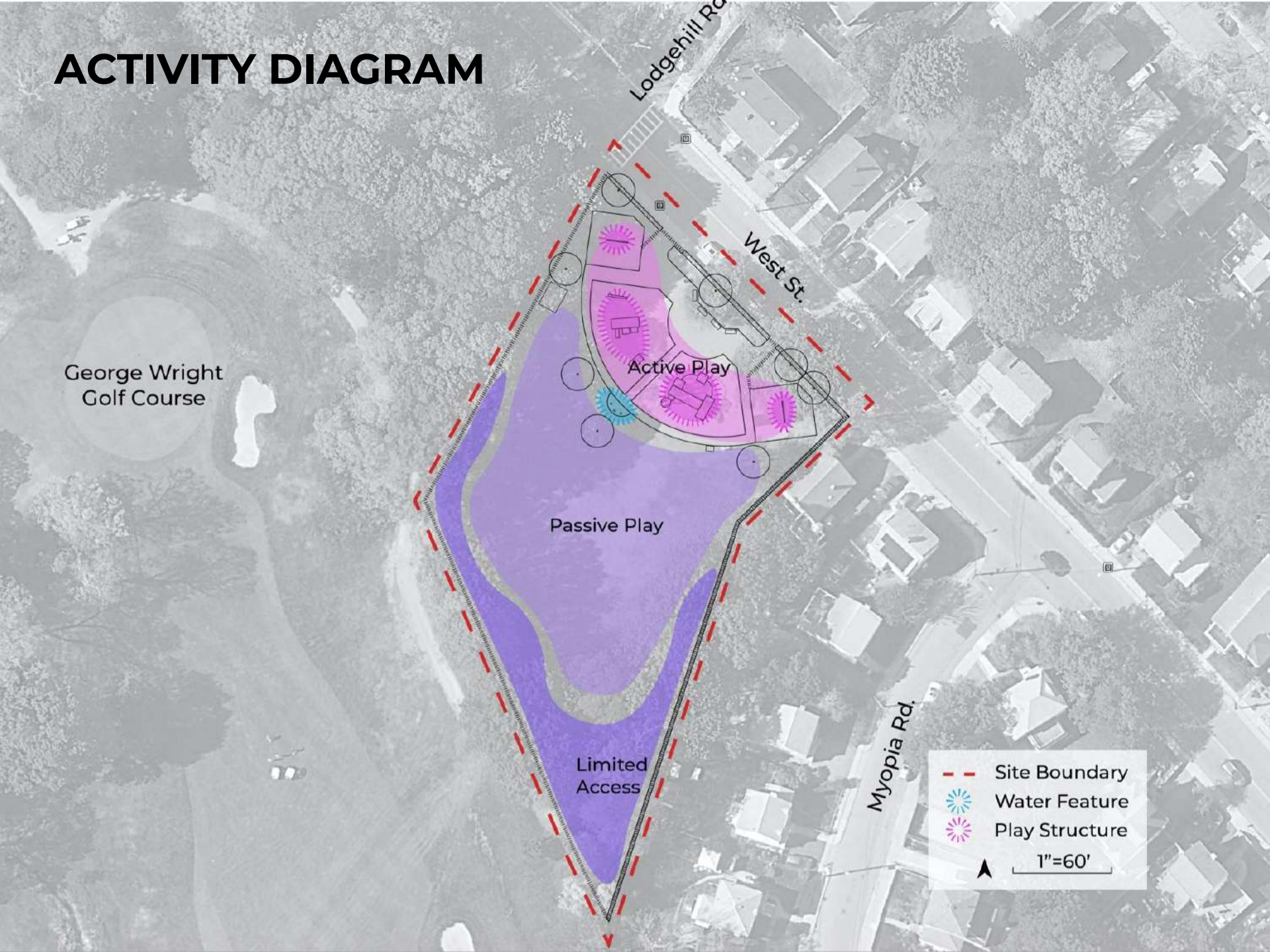
Active Play

Limited  
Access

Myopia Rd.

- - - Site Boundary
- Water Feature
- Play Structure

1"=60'





# SHADOW STUDY - SPRING + FALL



9AM



12PM



4PM



# SHADOW STUDY - SUMMER



9AM



12PM

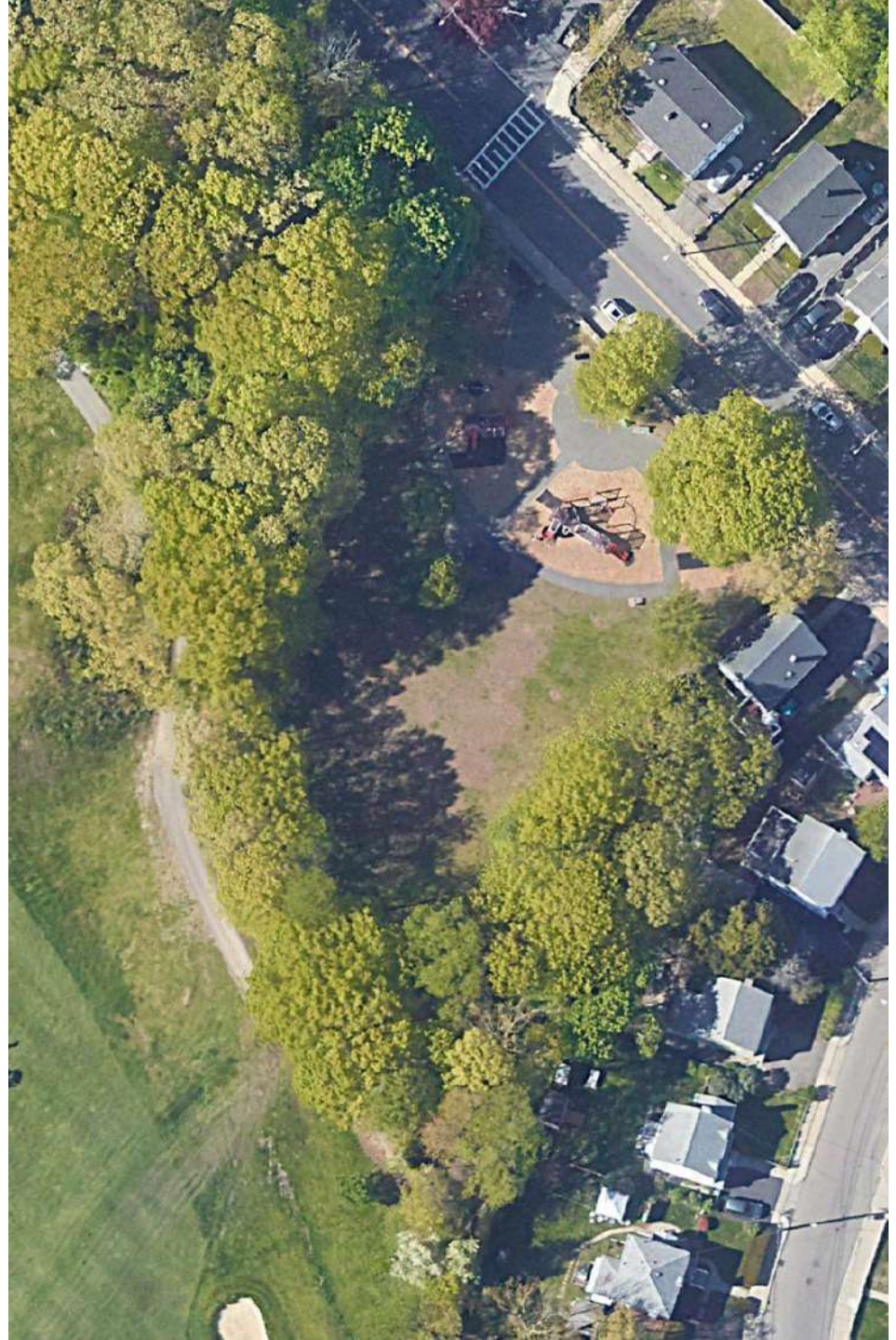


4PM



# MEETING 1 + POP UP FEEDBACK

- **Update play equipment!**
- **Play equipment requested:**
  - rope climbing
  - spinner
  - more swings
  - water play
  - place for toddlers to play
  - trike loop
  - better slides
  - monkey bars
- **Mutt Mitt dispenser for picking up after dogs**
- **Feel like the rear of the site could be better used**
- **Shade structure, more seating and picnic tables**



# EXISTING SITE IMAGES









# CLIMBERS





# MONKEY BARS



# SPINNERS



# SWINGS



# BOUNCING AND BALANCING



# WATER PLAY



# OTHER PLAY OPPORTUNITIES



# TEEN



Public art feeds the  
imagination, defines places,  
and creates destinations.

Play can do the same.

# FURNISHING





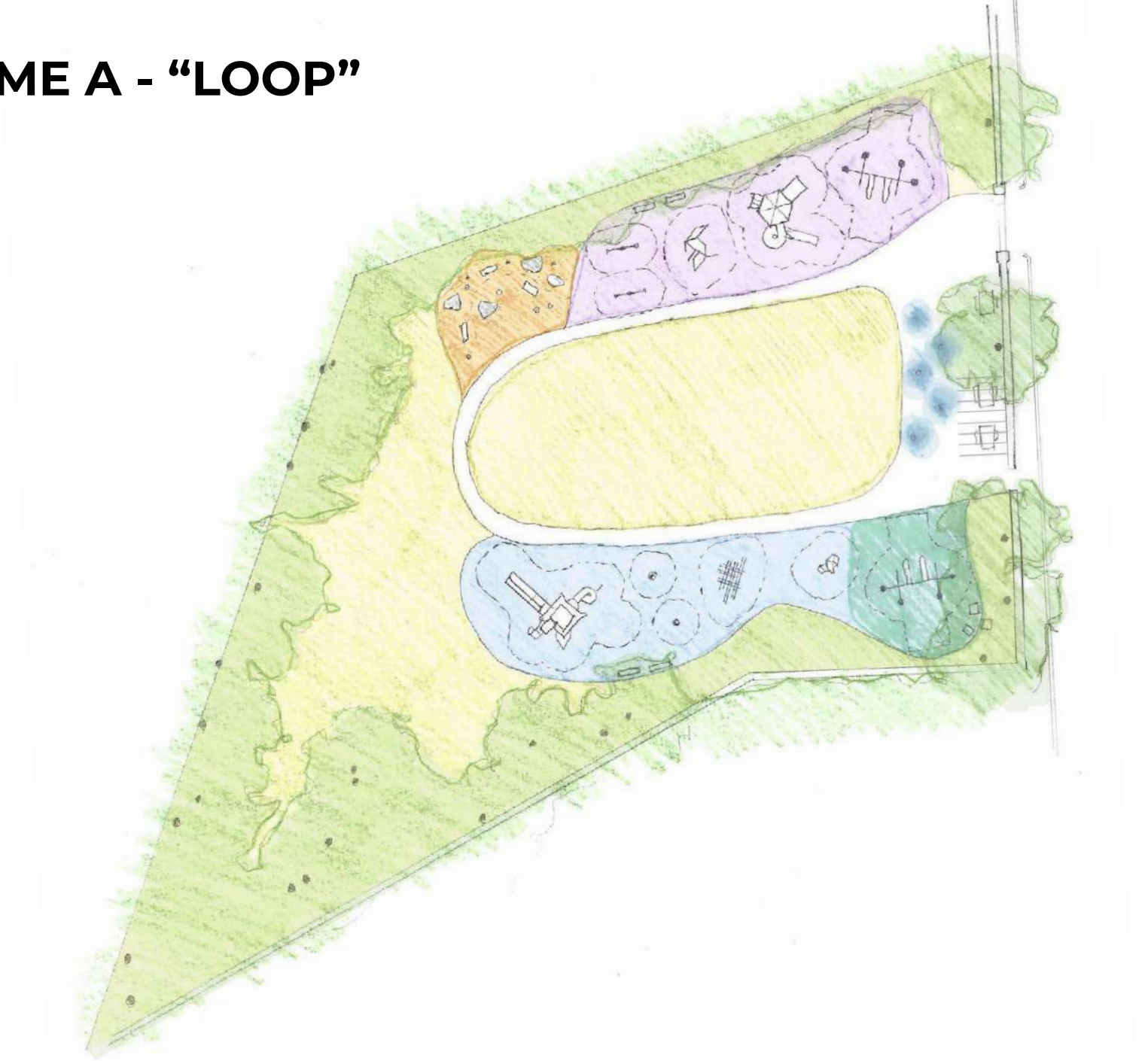
# FURNISHING



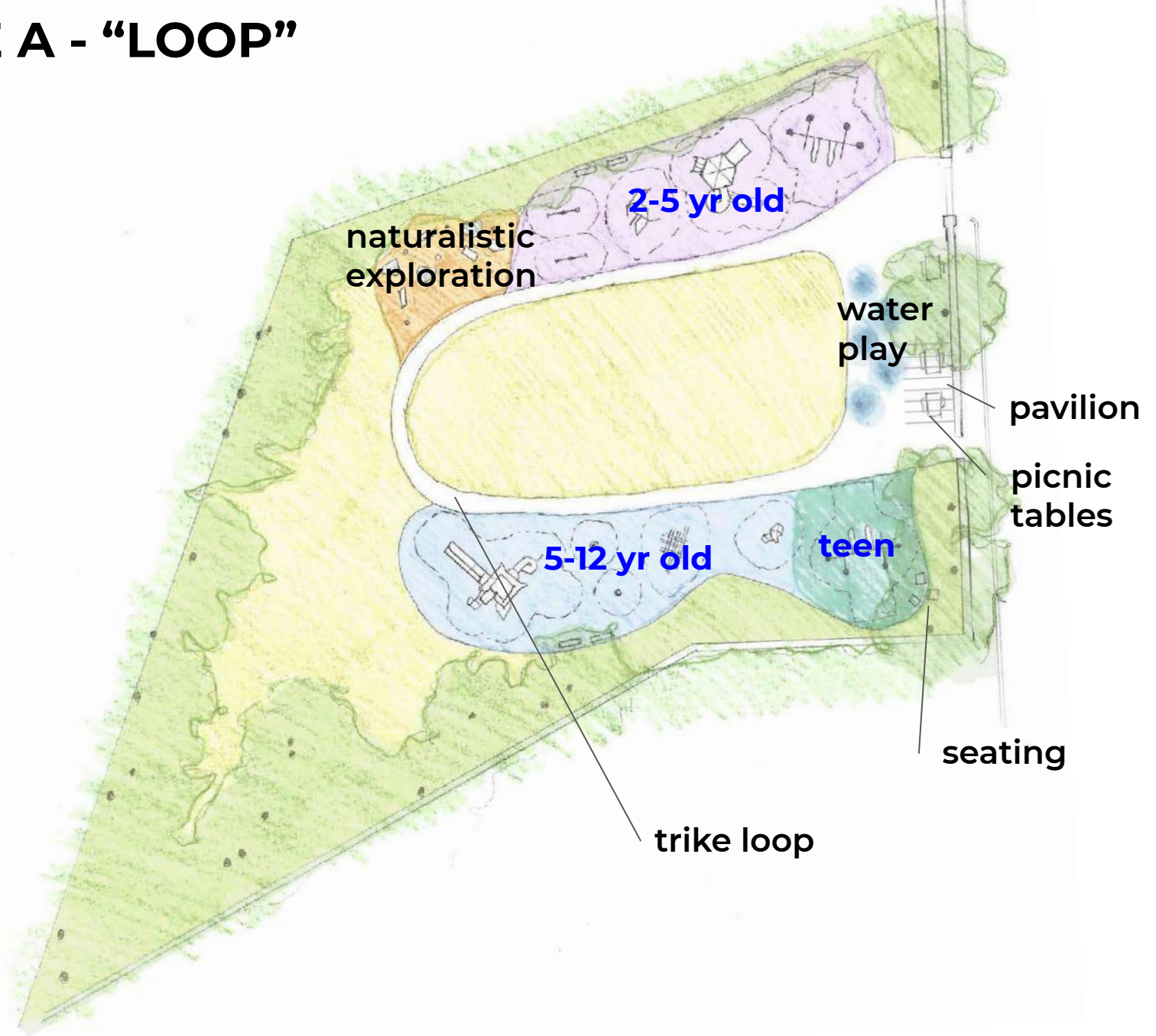
# EXISTING SITE PLAN



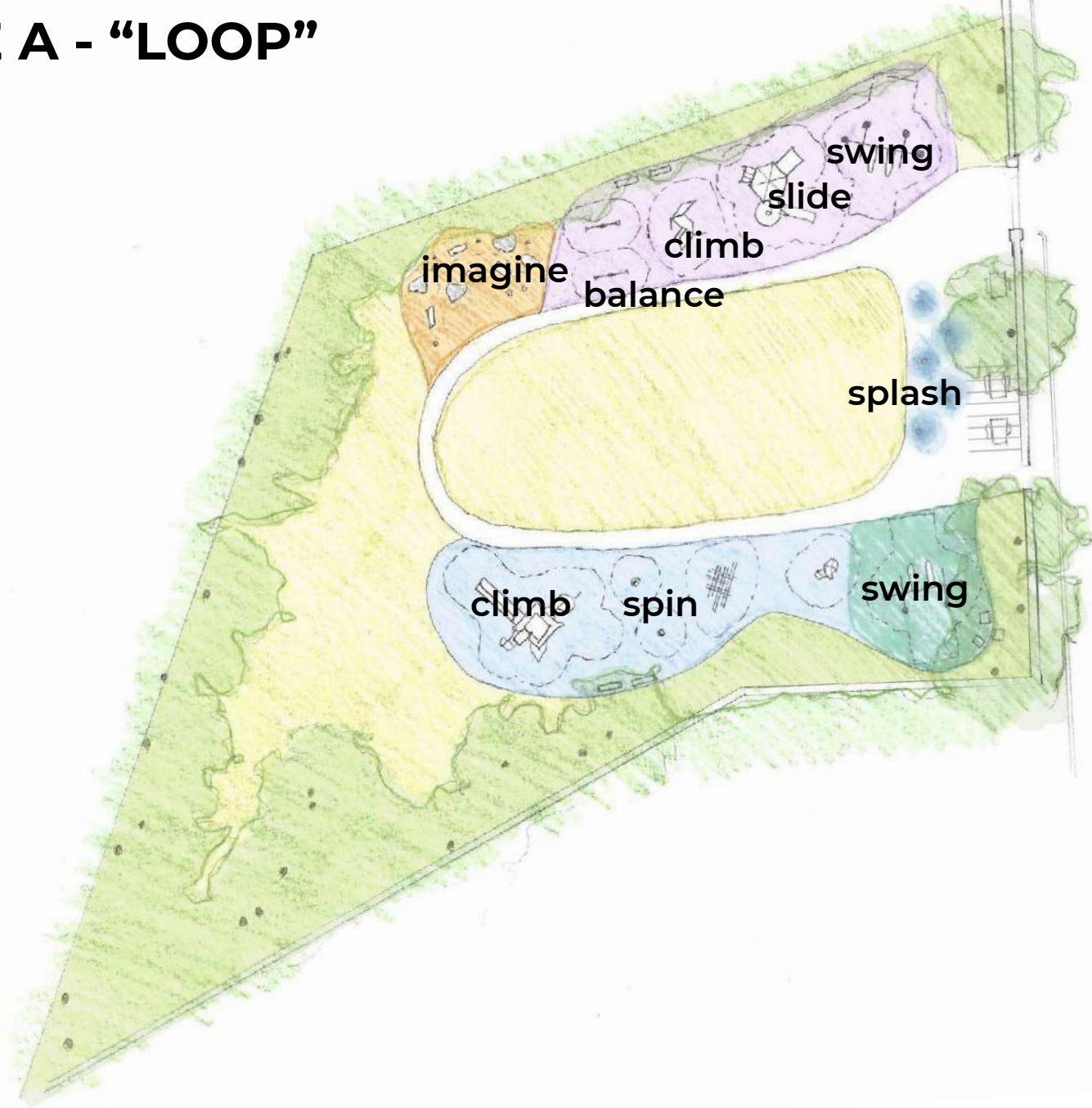
# SCHEME A - "LOOP"



# SCHEME A - "LOOP"



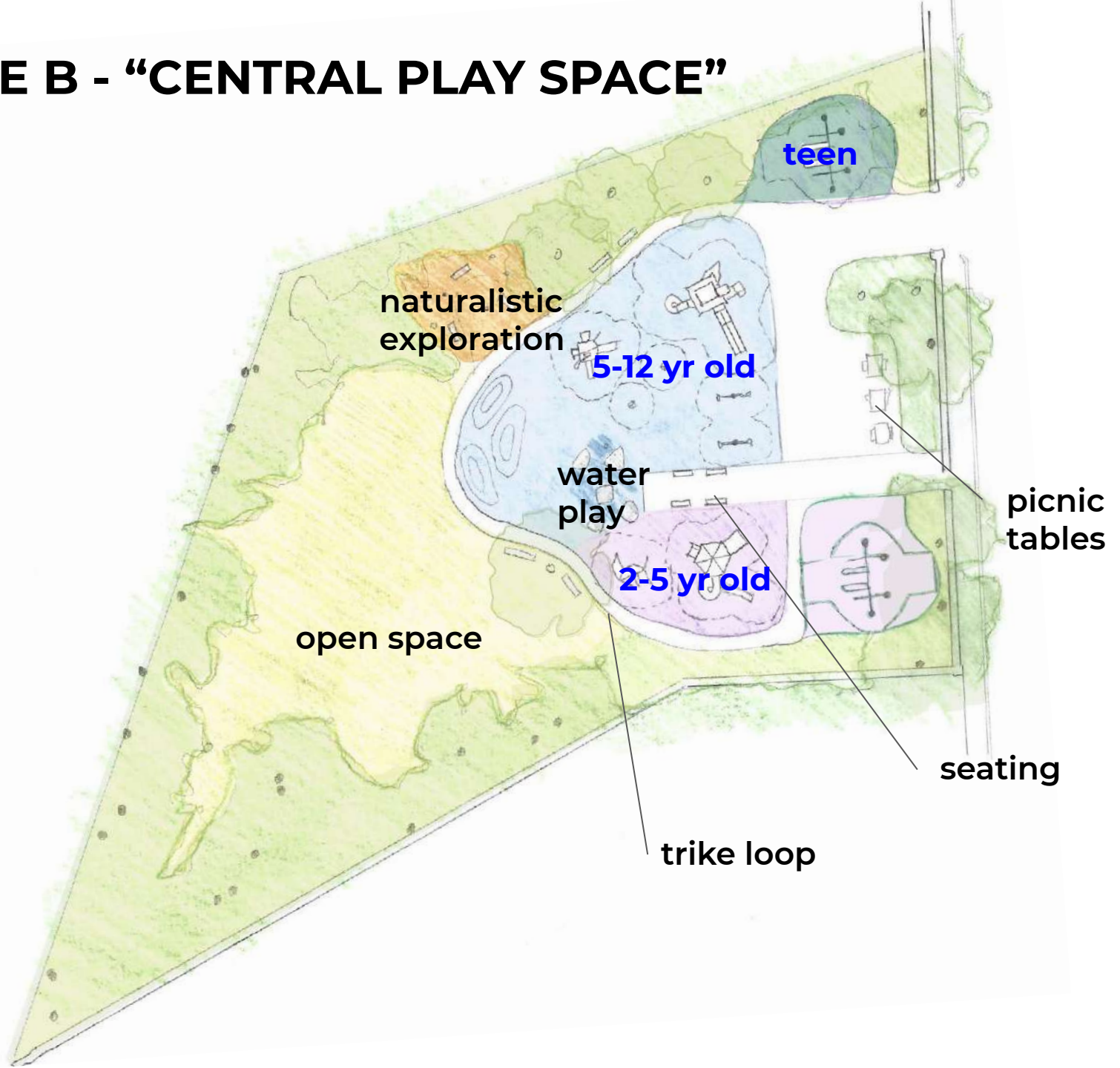
# SCHEME A - "LOOP"



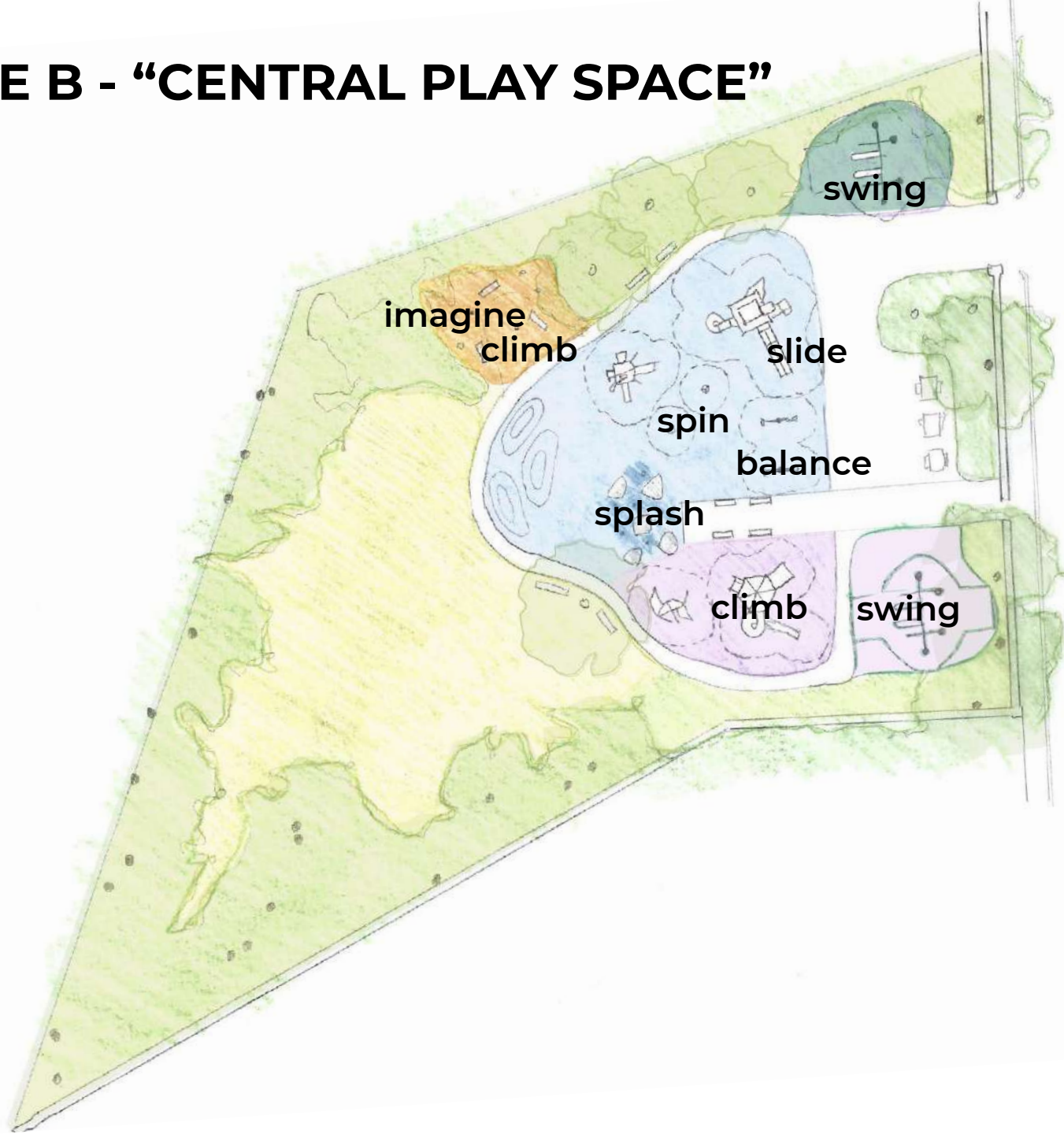
# SCHEME B - "CENTRAL PLAY SPACE"



# SCHEME B - "CENTRAL PLAY SPACE"

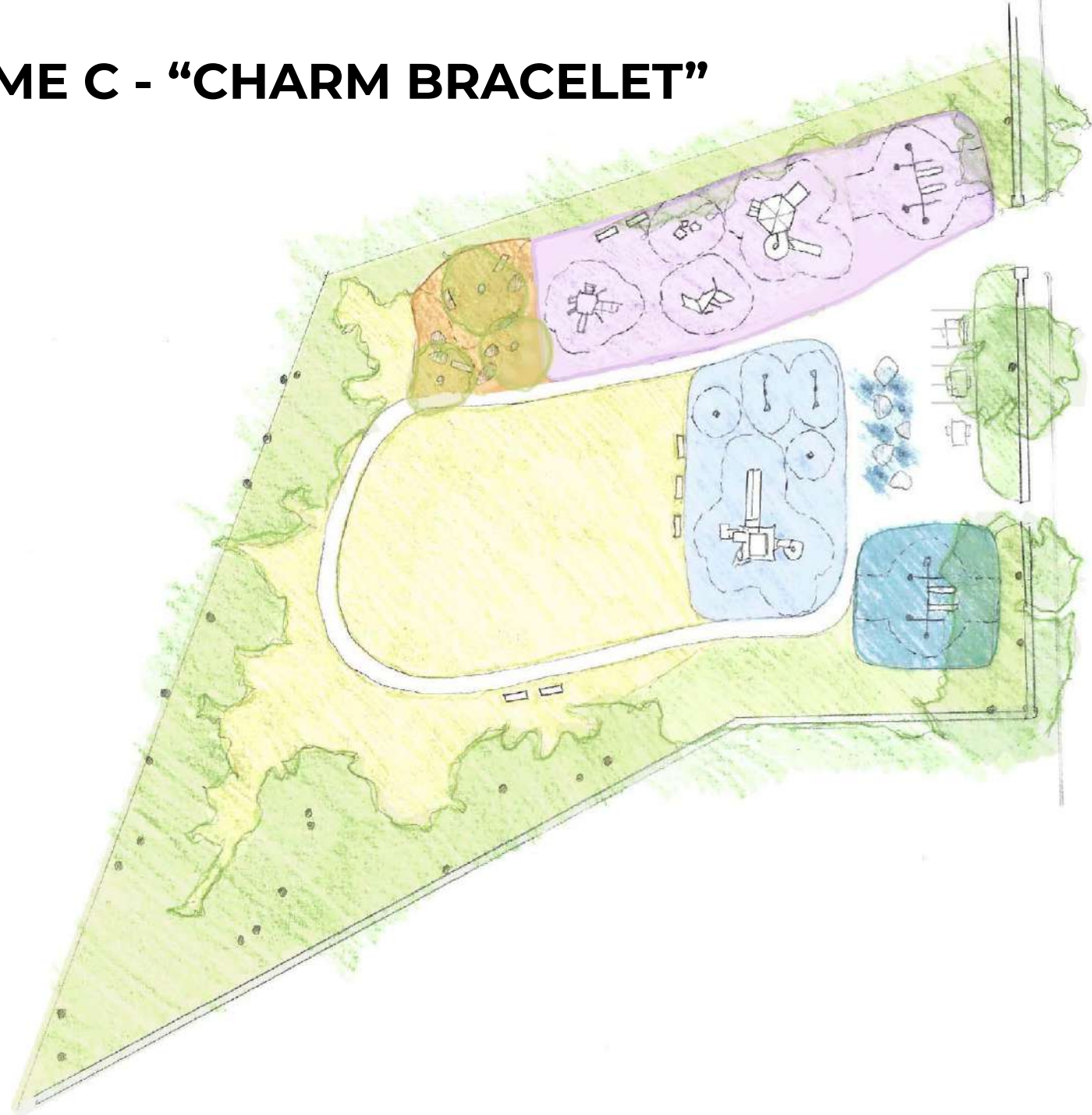


# SCHEME B - "CENTRAL PLAY SPACE"

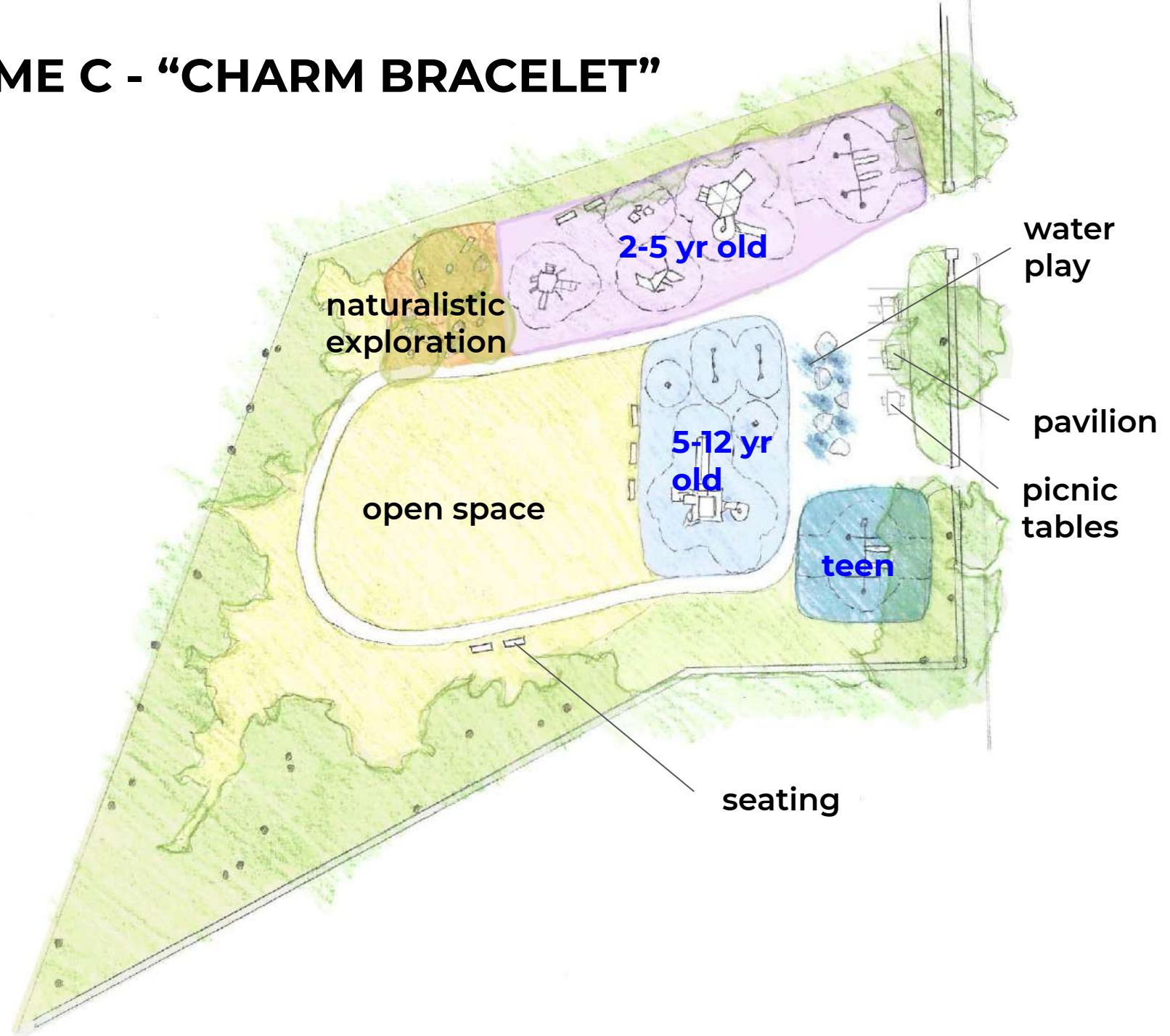




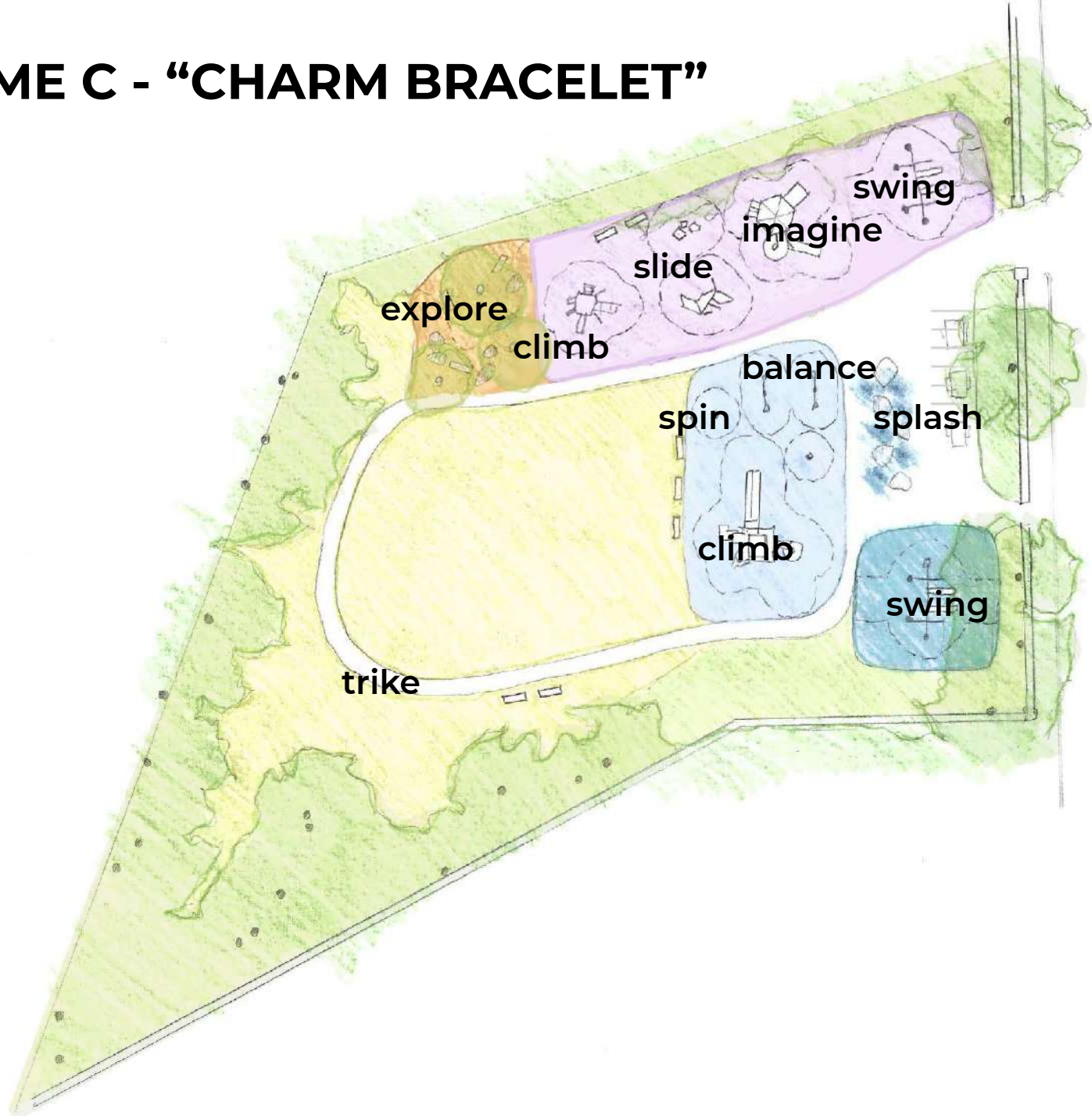
# SCHEME C - "CHARM BRACELET"



# SCHEME C - "CHARM BRACELET"



# SCHEME C - "CHARM BRACELET"



# LISTENING & DISCUSSION

Help us build great parks.  
Let us know what matters to you.



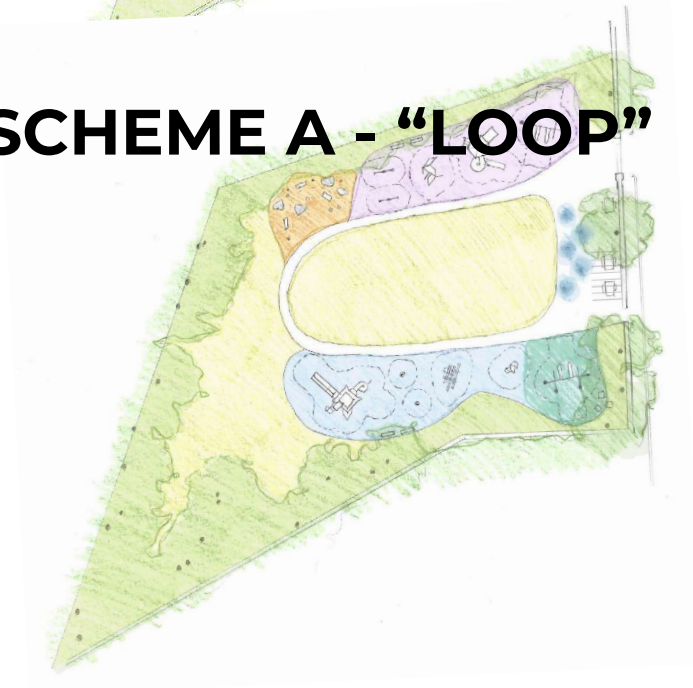
# EXISTING CONDITIONS



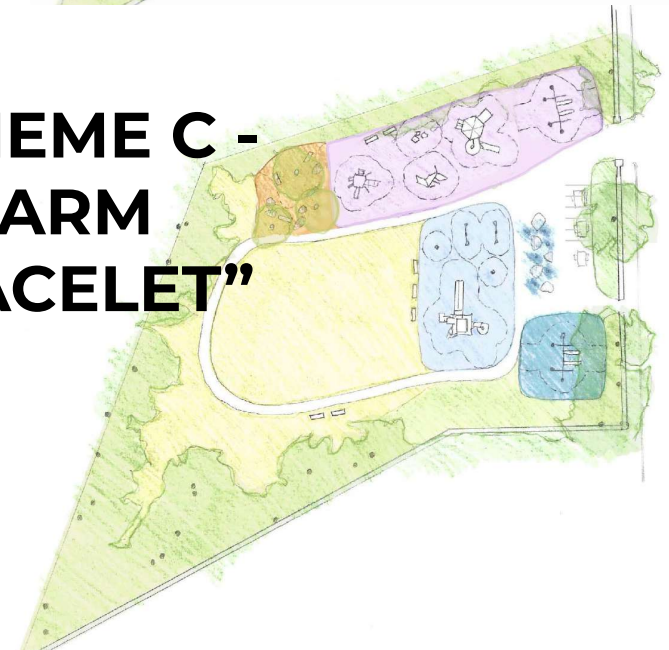
# SCHEME B - "CENTRAL PLAY SPACE"



# SCHEME A - "LOOP"



# SCHEME C - "CHARM BRACELET"



# THANK YOU!

## On Site Pop Up: Monday, September 27 McGann Park, 4-6 pm

*Please come by and give us your feedback in person!*

For questions, maintenance requests or  
concerns regarding any of our  
parks contact 311



For questions or comments on the project, please reach out to Lauren Bryant at  
[Lauren.Bryant@boston.gov](mailto:Lauren.Bryant@boston.gov) or at 617-961-3019



July 15, 2021  
Boston Parks and Recreation

