

Improvements to
MOTHER'S REST
Meeting 3

MOTHER'S REST



Date December 9, 2021
Boston Parks and Recreation



MEETING RECORDING



The Boston Parks and Recreation Department will be recording the meeting and posting to our project webpage for those who are unable to attend the Zoom meeting live.

It is possible that participants may also be recording the meeting with their phones cameras or other devices. If you do not wish to be recorded during this meeting, please keep your microphone and camera off.

VIRTUAL MEETING ETIQUETTE

We want to ensure this conversation is a pleasant experience for all and that all community members/ stakeholders are comfortable sharing their comments, questions and feedback.

Please be respectful and mindful of each other's time when asking questions/ providing comments, so that all attendees are able to participate in the meeting.

Keep questions/ comments project-specific and not personal to yield solution-driven discussion.

Please wait until all attendees have had the opportunity to ask a question/ provide a comment before providing additional questions/ comments.

You can always set up a conversation with lauren.bryant@boston.gov or 617-961-3019 to further discuss the project or process.

ZOOM TIPS

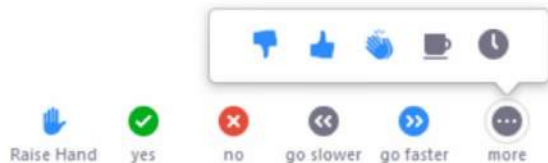
Here is how you can participate during the question and answer part of the presentation.

DURING THE PRESENTATION:



VIA WEB:

Turn video on / off.



To use these non-verbal options click on participants (bottom of screen); these options will pop up in side bar.

DURING THE Q&A:



JOINING VIA PHONE?

Use *9 to raise hand to ask for audio / video permission to ask questions or provide comments.



VIA WEB:

Chat to ask questions / comments or provide responses to poll questions



Raise hand to ask for audio / video permission to ask questions or provide comments.

AGENDA

1

PROJECT TEAM INTRODUCTION

2

PROJECT OVERVIEW

3

MEETING 2 OVERVIEW

4

MEETING 3 PRESENTATION

5

LISTENING & DISCUSSION

6

CLOSING REMARKS & NEXT STEPS

PROJECT TEAM

LAUREN BRYANT

PROJECT MANAGER

lauren.bryant@boston.gov or 617-961-3019

CHRISTINE BRANDAO

OUTREACH COORDINATOR, EXTERNAL AFFAIRS

christine.brandao@boston.gov or 617-961-3006

DEBORAH MYERS LANDSCAPE ARCHITECTURE

Principal, Deb Myers

Principal, Jeff Thoma

Landscape Architect, Chris McCormick

Landscape Architect, Yuhan Ji

DENISE DOS SANTOS

OFFICE OF NEIGHBORHOOD SERVICES

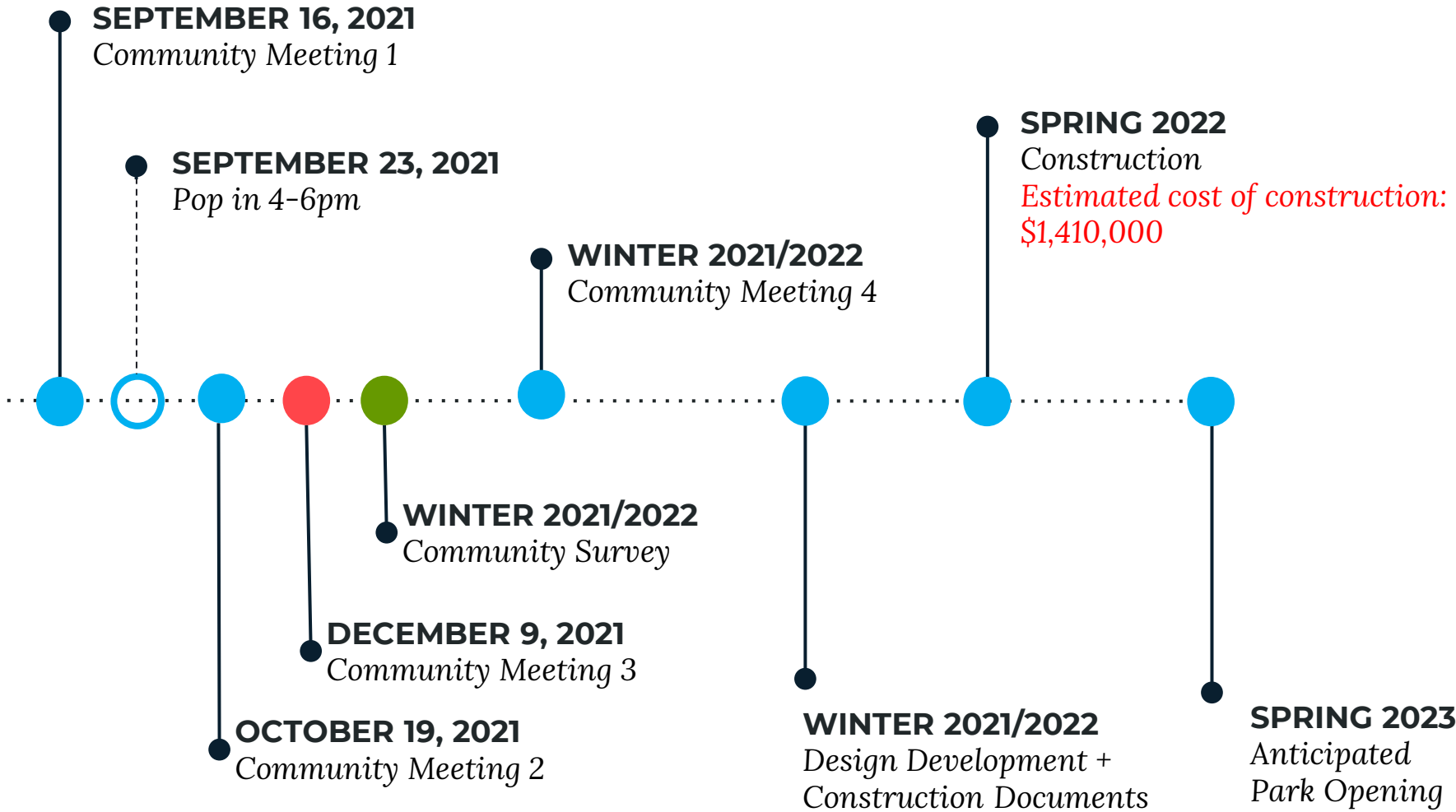
Denise.dossantos@boston.gov



PROJECT OVERVIEW



PROJECT SCHEDULE & FUNDING



A photograph of a park scene, heavily tinted with a blue color. In the foreground, there is a field of tall, dry grass. The middle ground features a paved playground area with several green benches. A person is sitting on one of the benches on the left. In the background, there are several trees with green and some autumn-colored leaves, and a white building with a balcony is visible. The text "WHAT WE HEARD?" is overlaid in large, white, bold, sans-serif font across the center of the image.

WHAT WE HEARD?

Previous Design Options – Option 1 – Revive

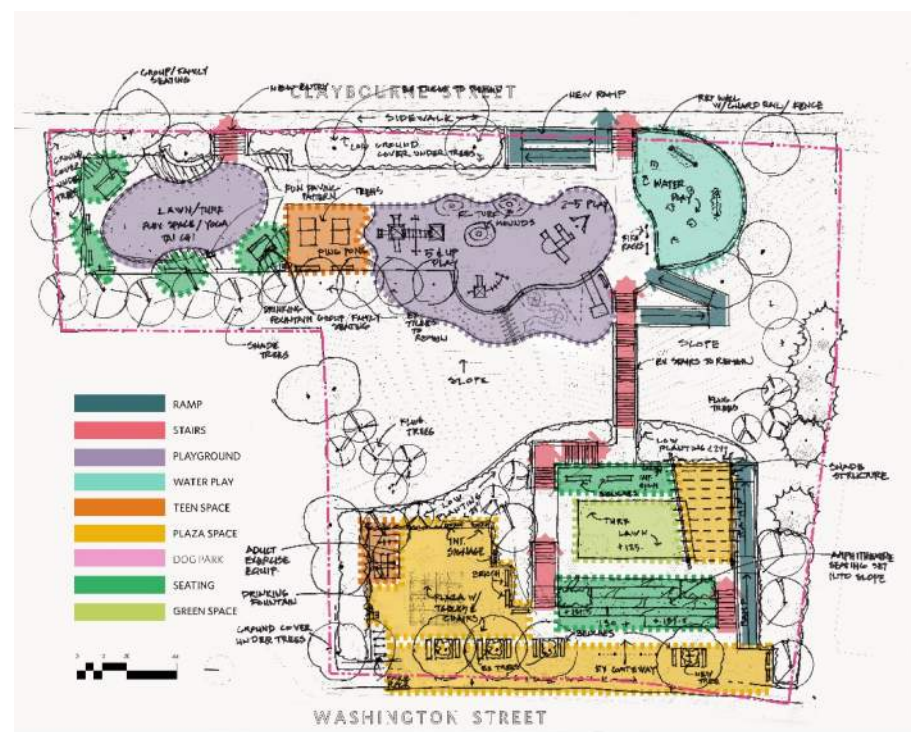
Option 1 - Positives

- Telescopes.
- Playground for different age groups
- Chess / checker game tables
- Color on stairs
- Hill play

- Rock climbing equipment

Option 1 – Questions & Comments

- Is a vending kiosk an opportunity (a vending meeting is being arranged).
- Can flowering plants be added? Flowers are things we can't maintain
- Are there flowering trees? – Yes!
- Is the current dead space in the park being used?
- Games tables to be considered
- Breaking stairs for resting spot and have landing with seating options halfway up the stairs



Previous Design Options – Option 2 – Transform

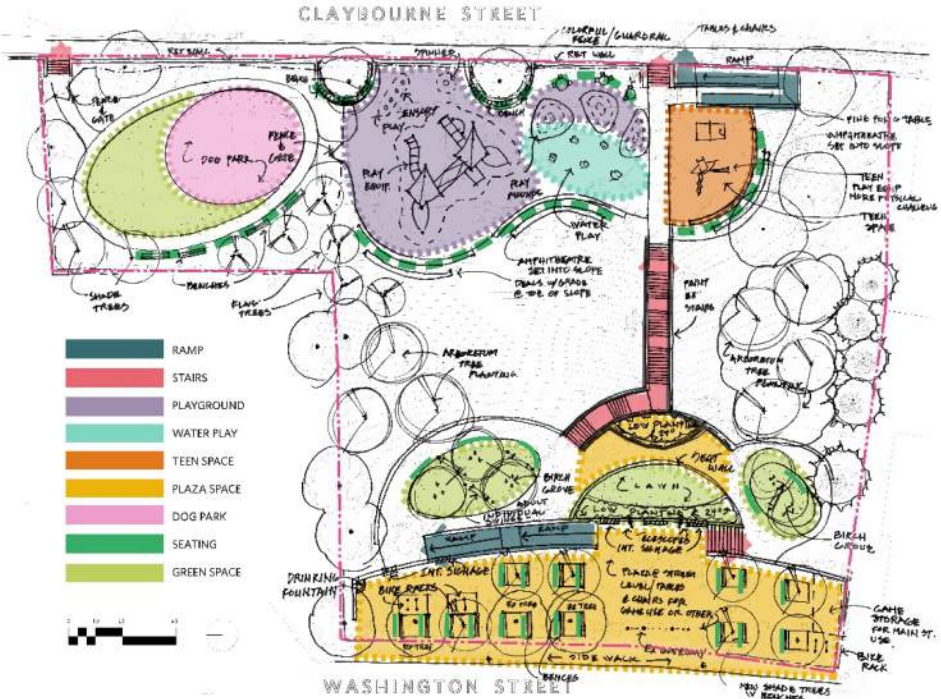
Option 2 – Positives

- Dog Park is important and there are dog owners in the neighborhood – Design team to look at comparisons of other dog parks
- Upper terrace design is open to maximized views

- Upper terrace could have children’s play area for those parents not able to go to the bottom of the hill
- Have larger play area for children

Option 2 – Questions + Comments

- Bring in loop path for tricycles
- Yoga lawn appears too small (15 people yoga class)
- Small dog park that takes space from other activities isn’t worth it.
- Little slope activity
- No passive adult exercise equipment
- Existing upper plaza has been used for yoga



Previous Design Options – Option 3 - Unite

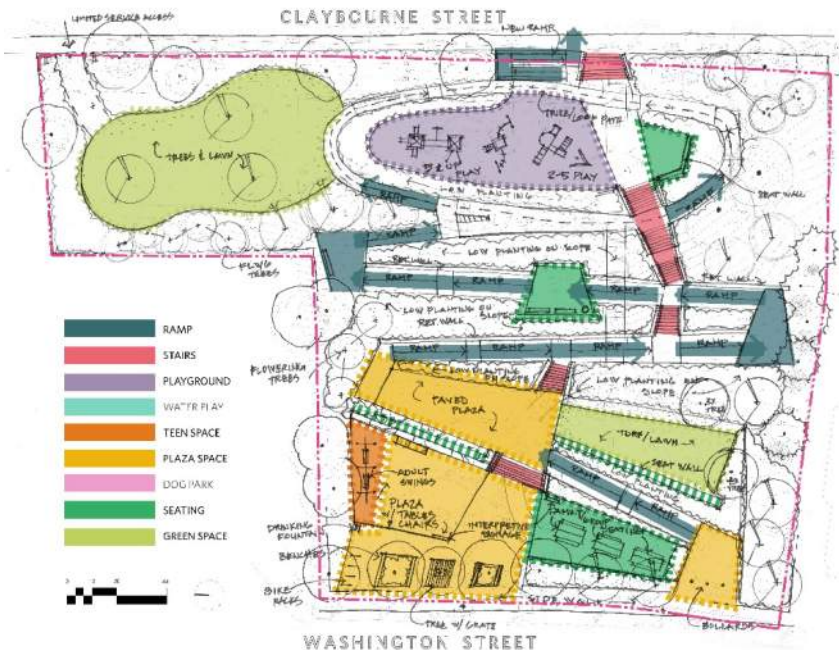
Option 3 – Positive

- Accessibility important to community

Option 3 – Questions & Comments

- We like the swings at Lawn on D.
- It is important that the park have a Large playground and water play is important
- Incorporating existing community elements will make the park welcoming to the community. (ex: Snap Chef)
- Feels like an adult park and not a place for kids.
- There are young families and new babies in the community, play space is essential for this community park

- Is there another accessible route from Claybourne Street to Washington Street? (nothing direct)
- This plan breaks up the current uses of the park
- Ramp seems cumbersome: will it be used?



DESIGN OPTIONS

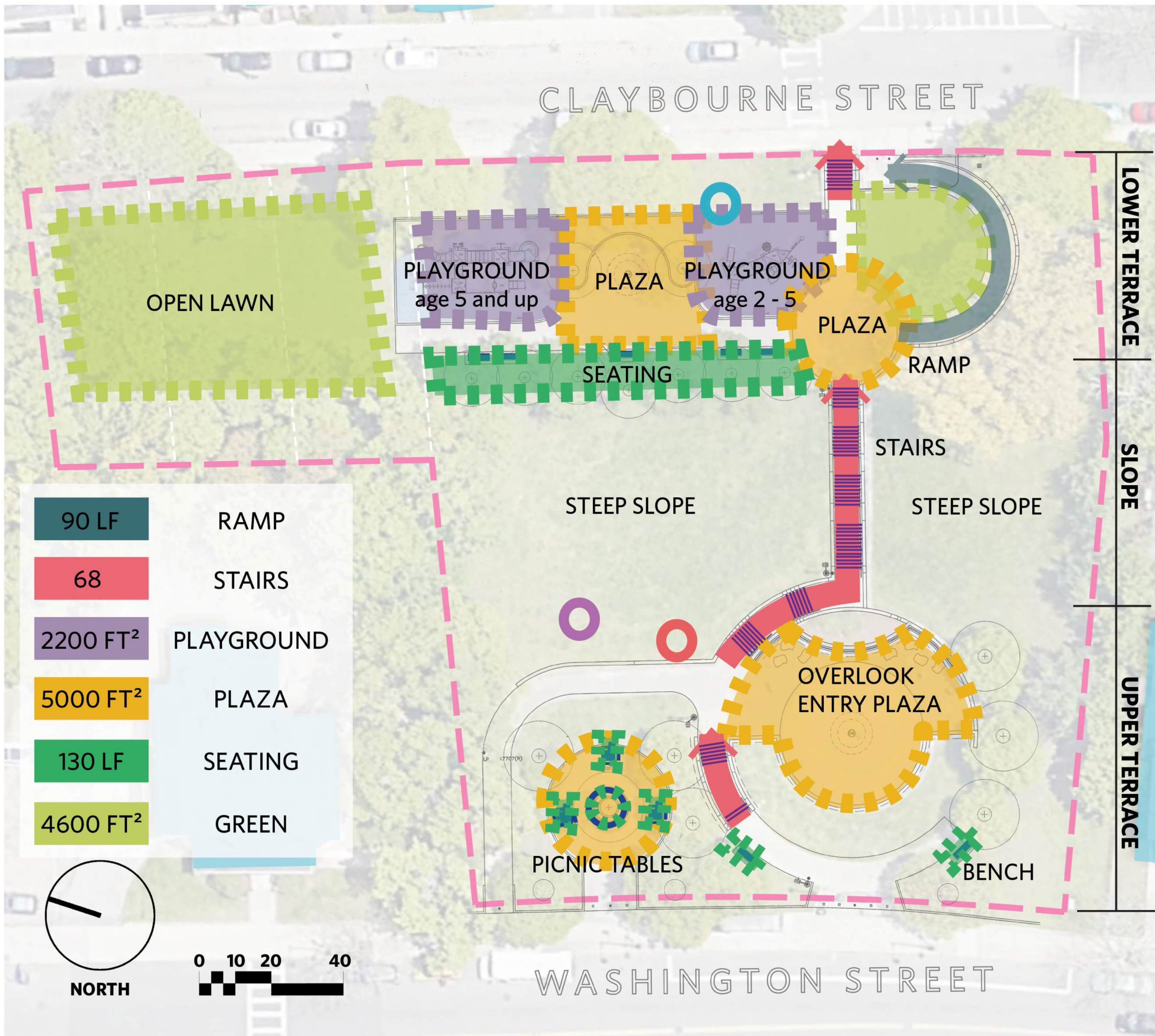
Help us build great parks.
Let us know what matters to you.



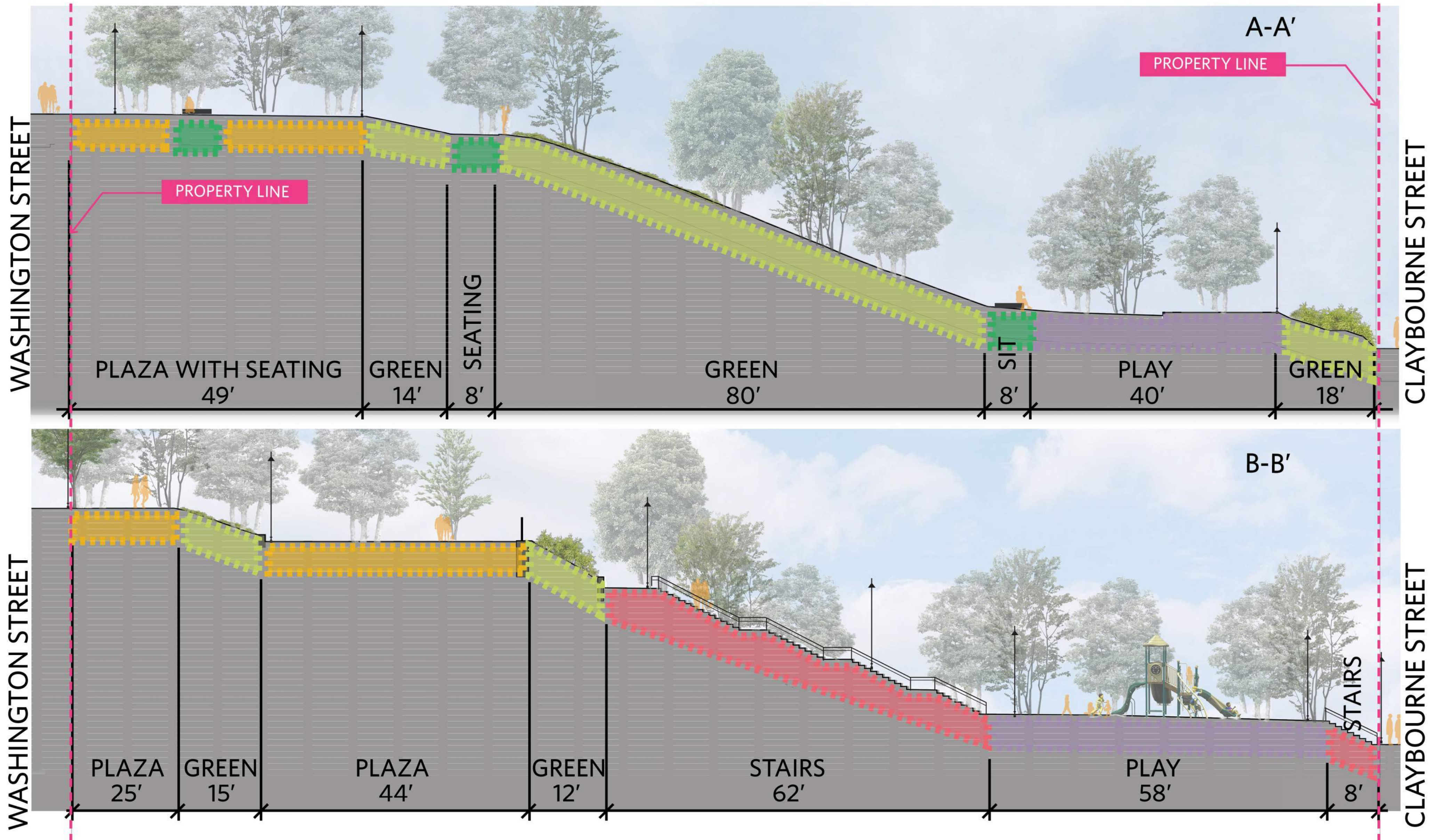
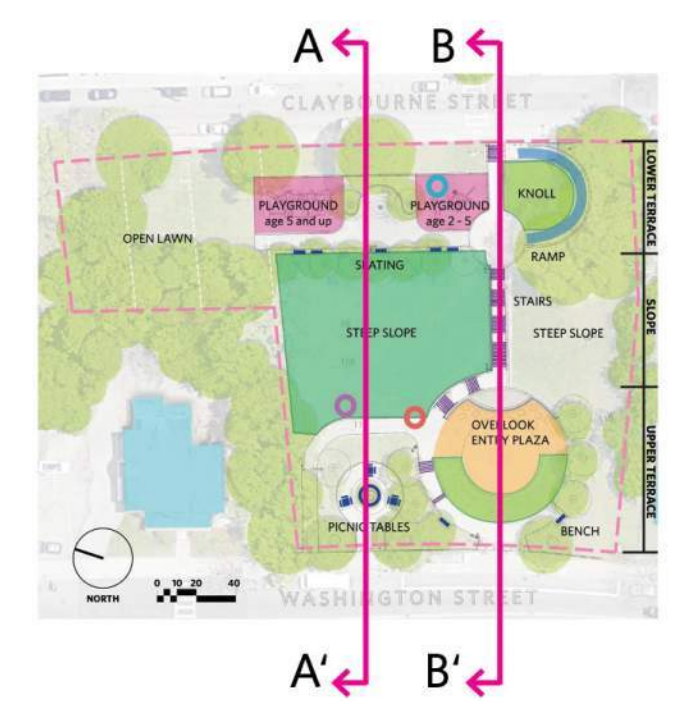
MOTHER'S REST AT FOUR CORNERS -
52,000 FT² (1.2 ACRES)



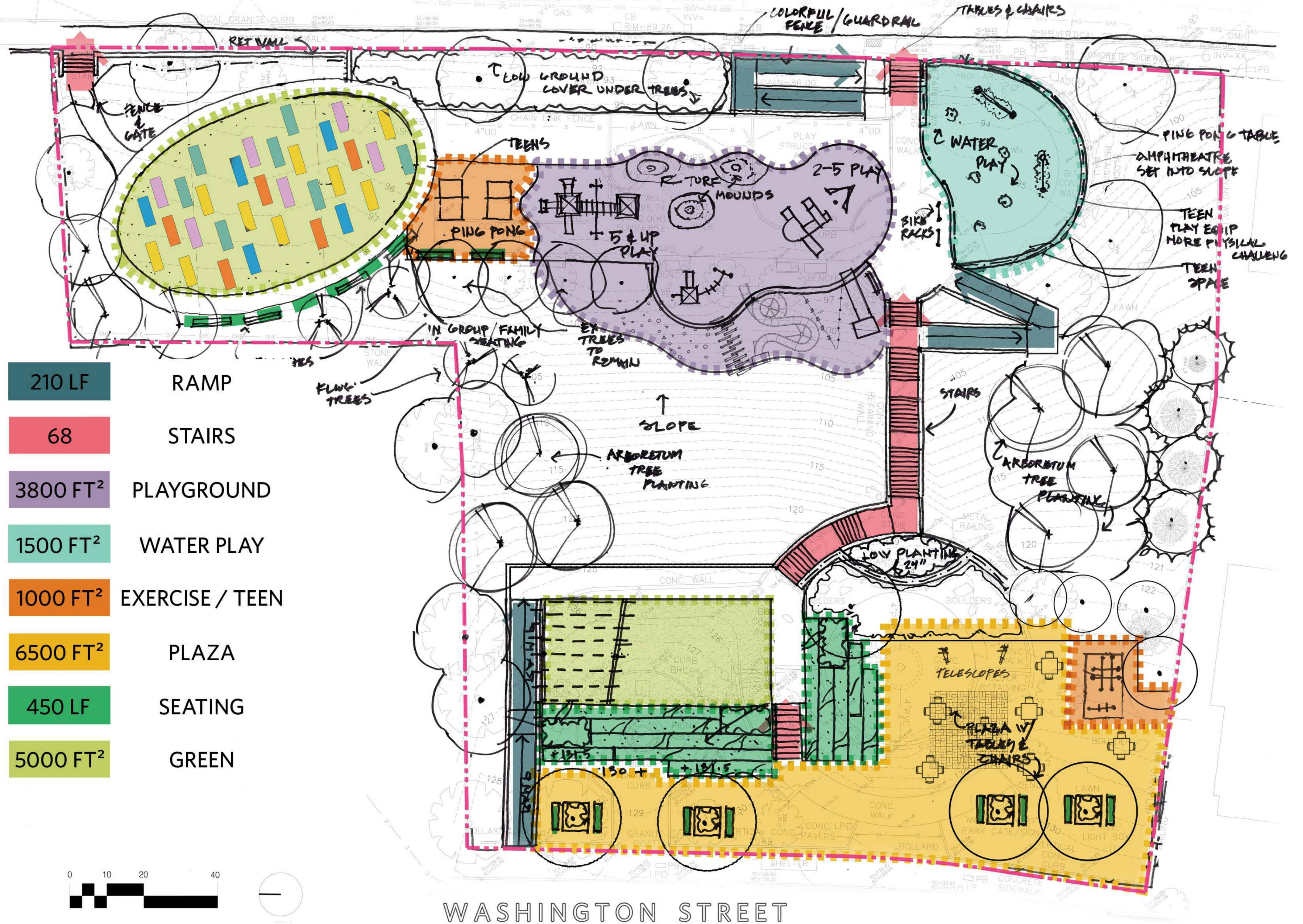
GARVEY PARK - 200,000 FT² (5 ACRES)



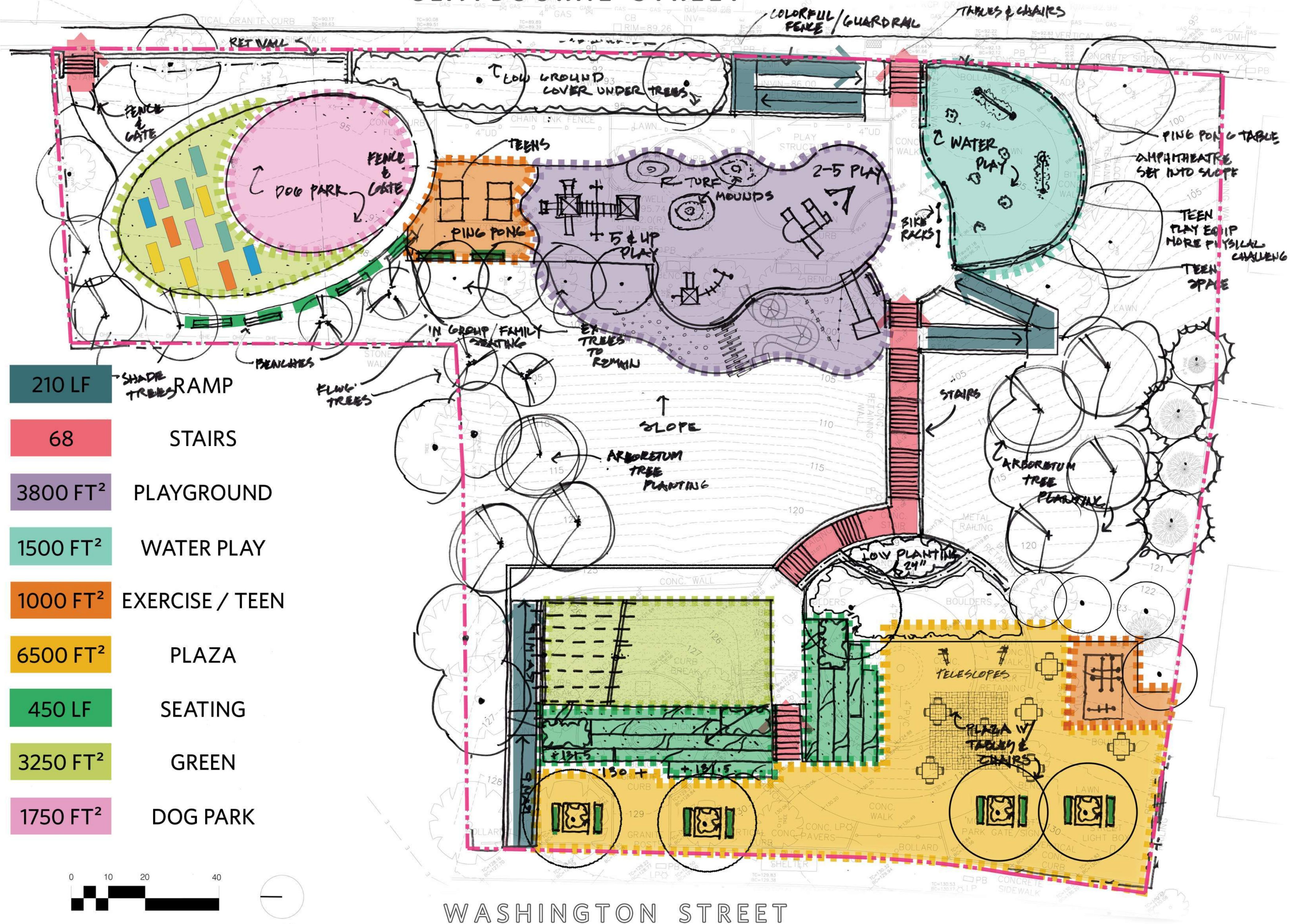
90 LF	RAMP	130 LF	SEATING
68	STAIRS	4600 FT ²	GREEN
2200 FT ²	PLAYGROUND	5000 FT ²	PLAZA



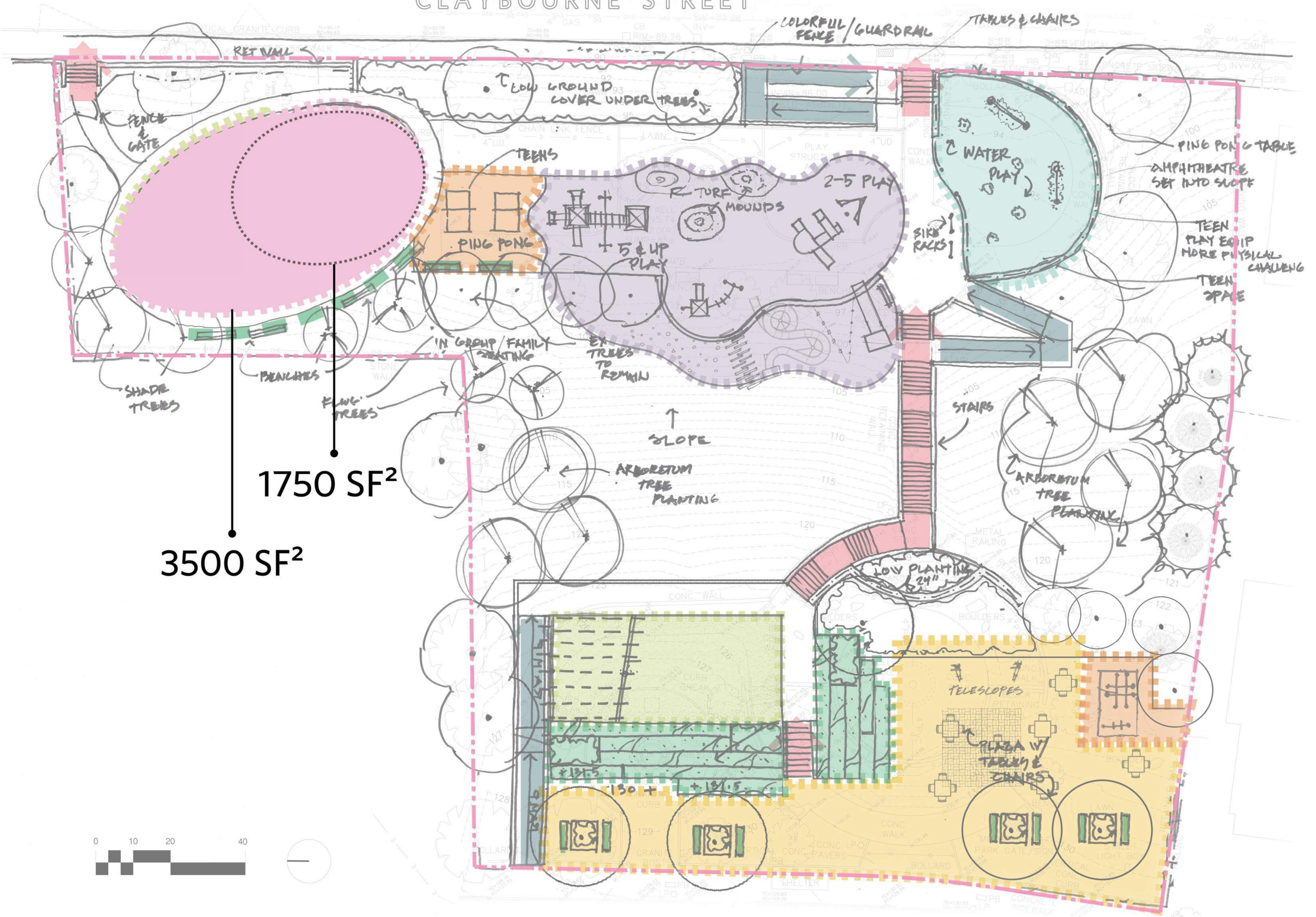
CLAYBOURNE STREET



CLAYBOURNE STREET



CLAYBOURNE STREET

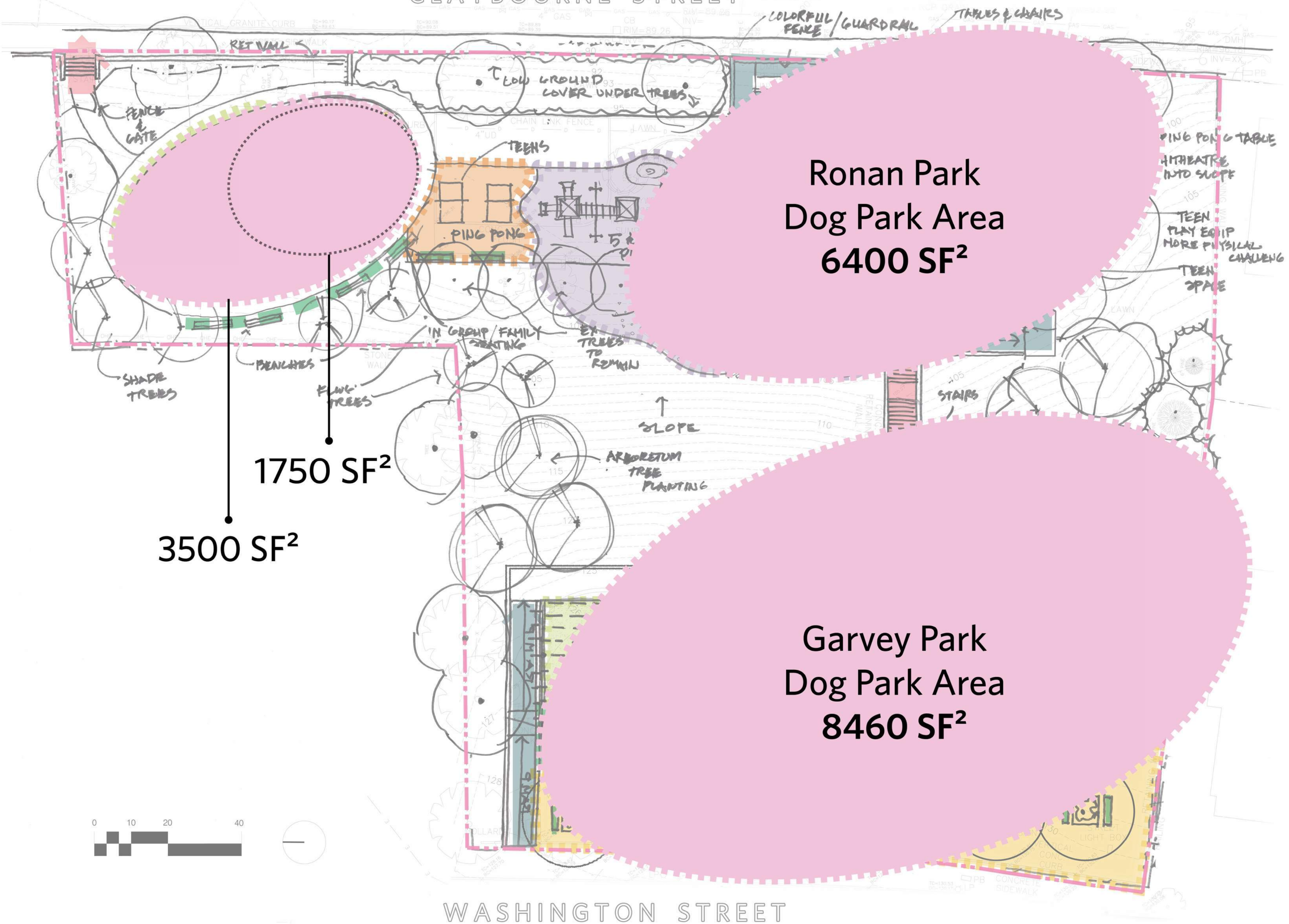


1750 SF²
 3500 SF²



WASHINGTON STREET

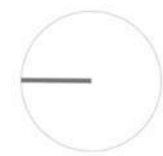
CLAYBOURNE STREET



Ronan Park
Dog Park Area
6400 SF²

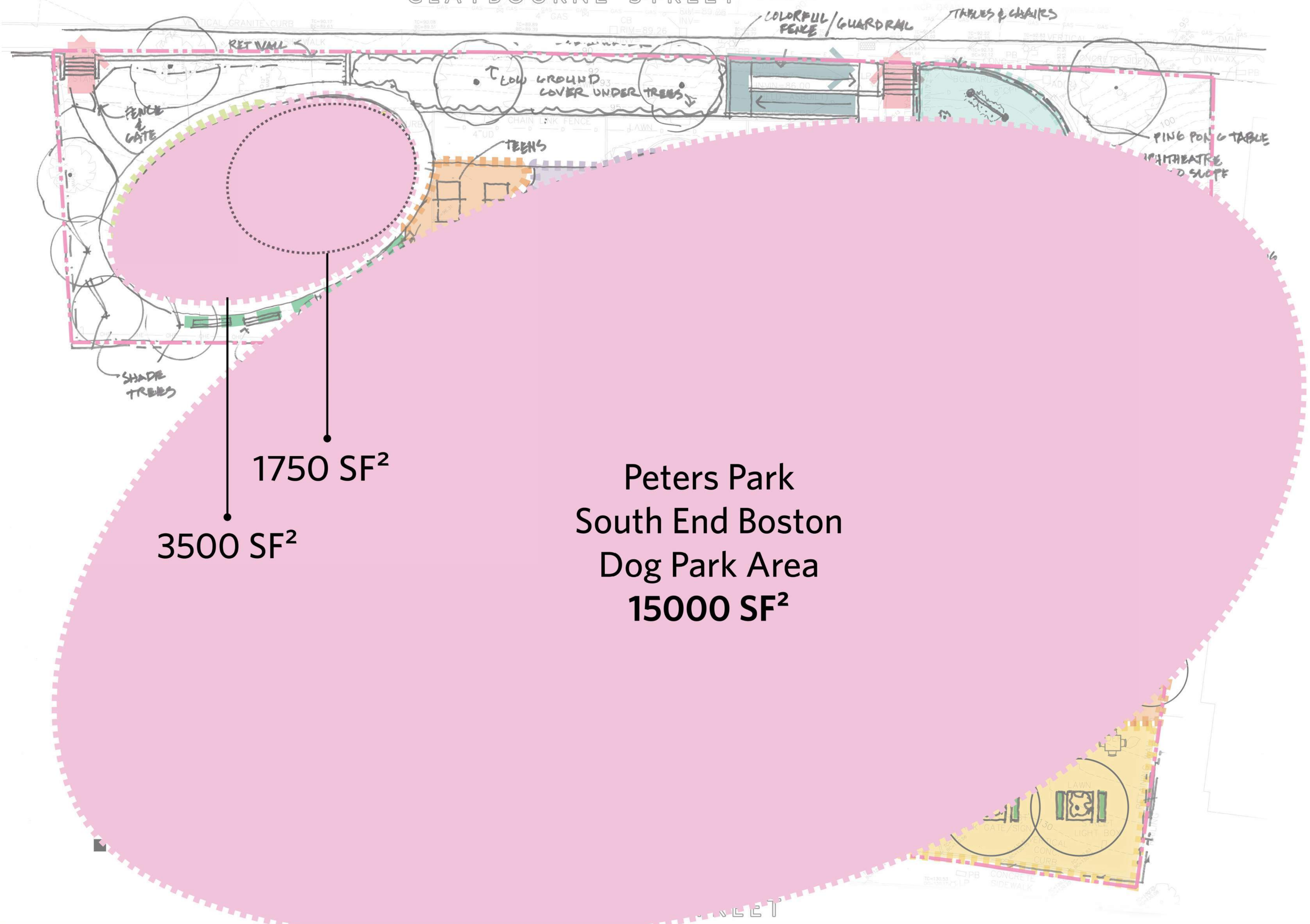
1750 SF²
3500 SF²

Garvey Park
Dog Park Area
8460 SF²



WASHINGTON STREET

CLAYBOURNE STREET

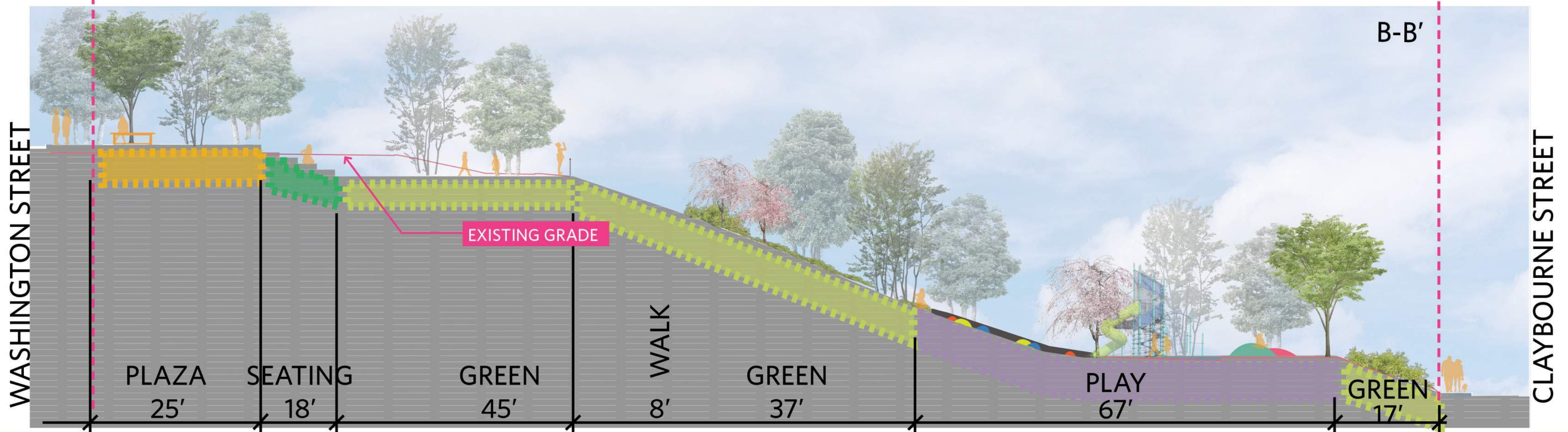
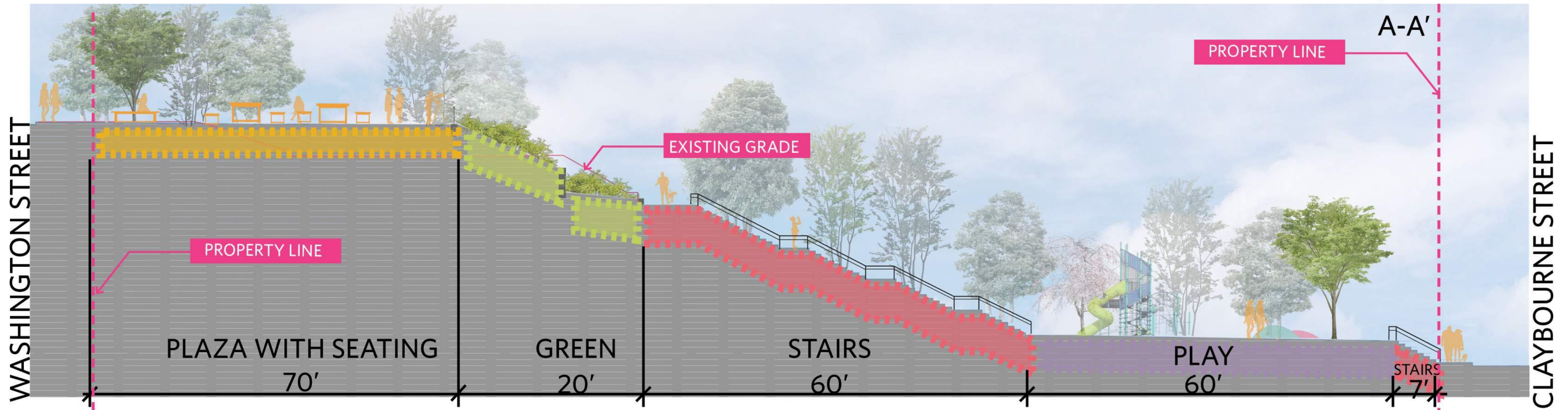
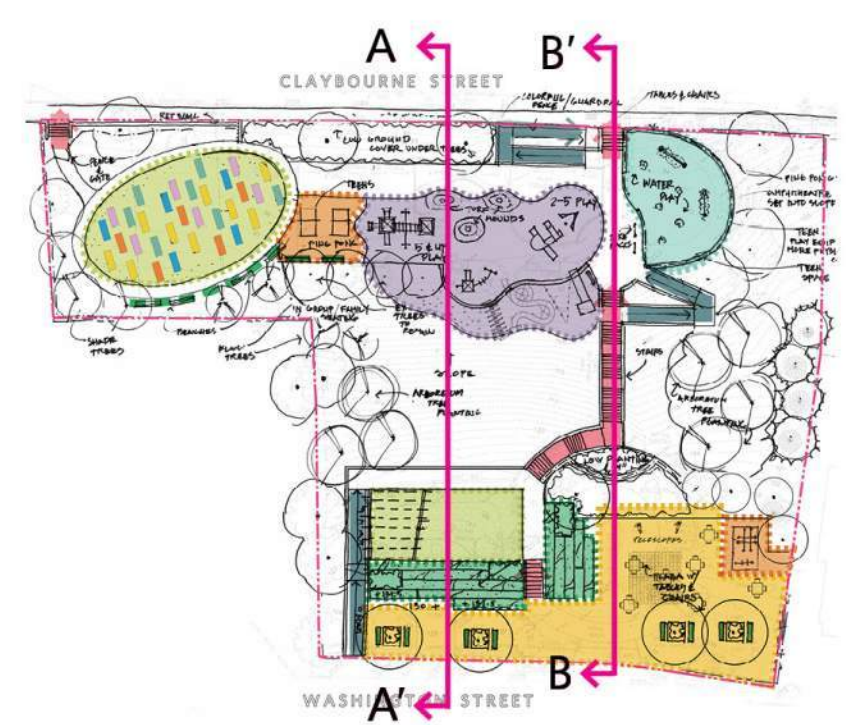


1750 SF²

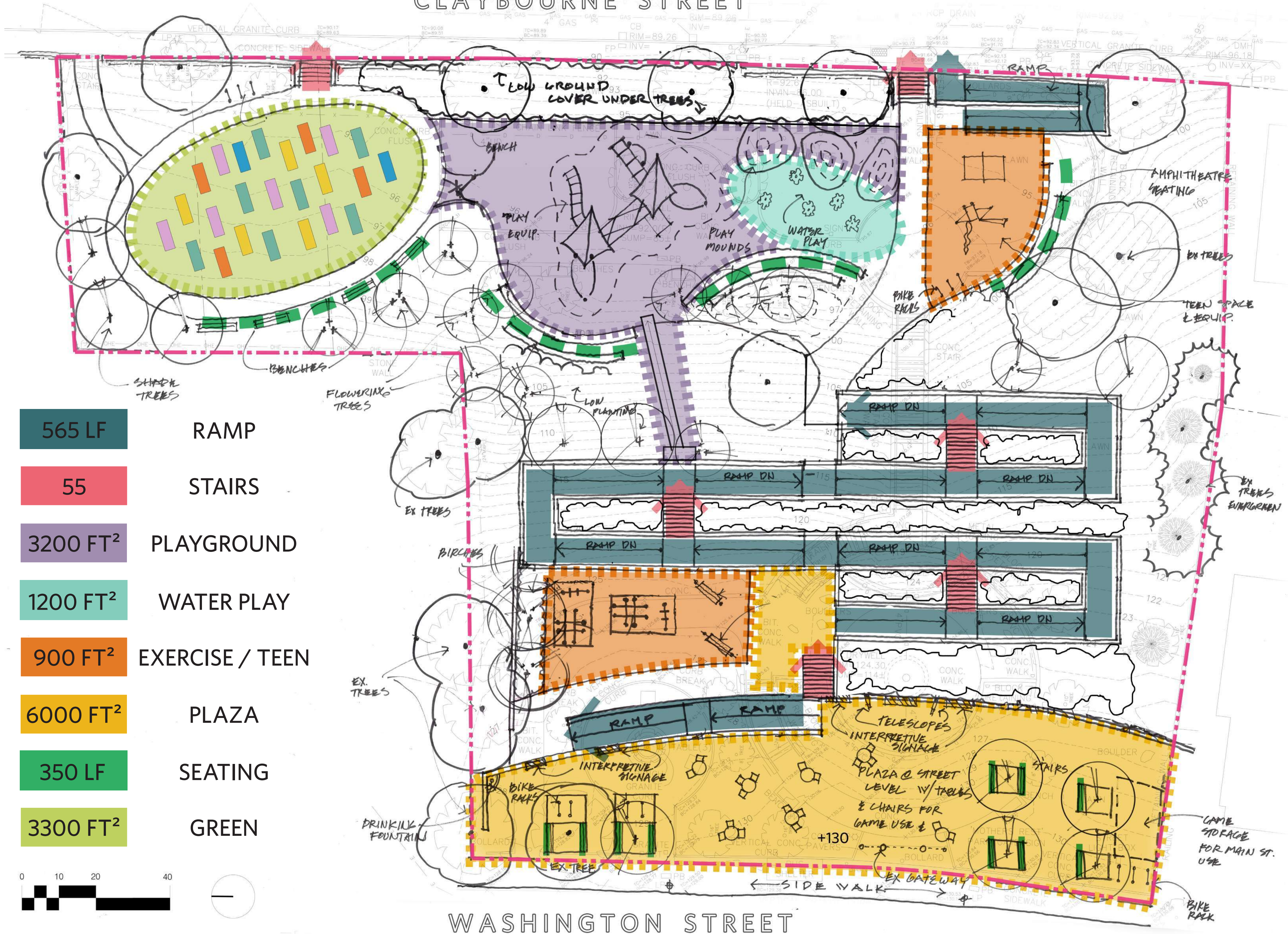
3500 SF²

Peters Park
 South End Boston
 Dog Park Area
 15000 SF²

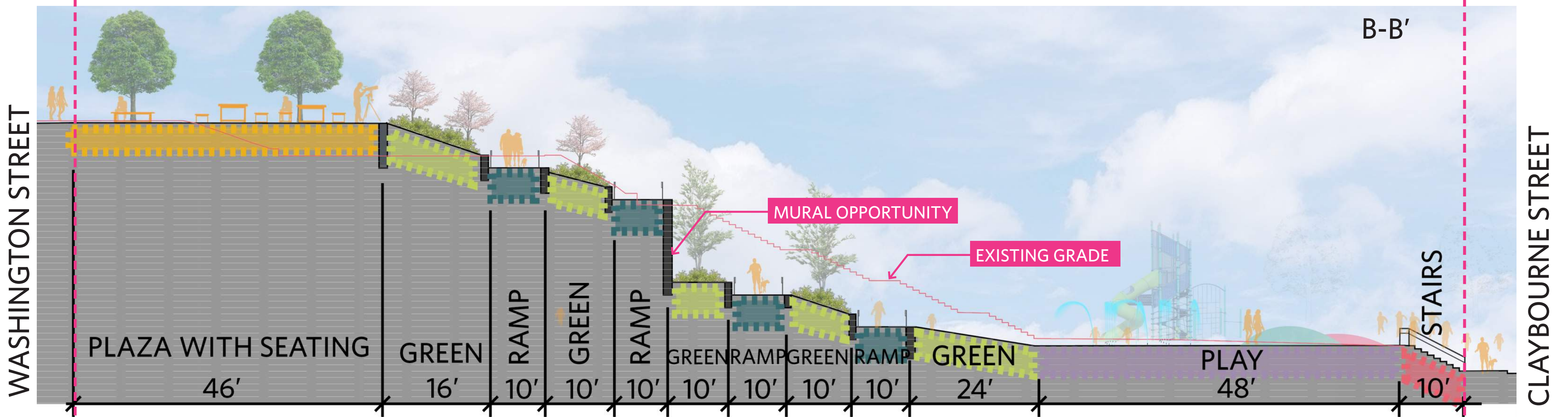
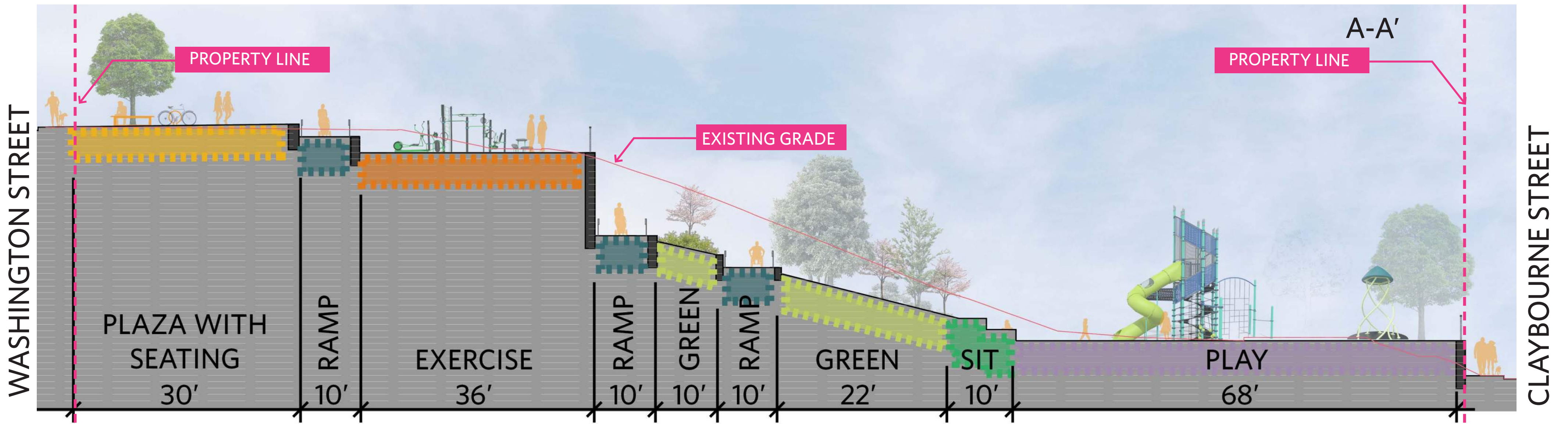
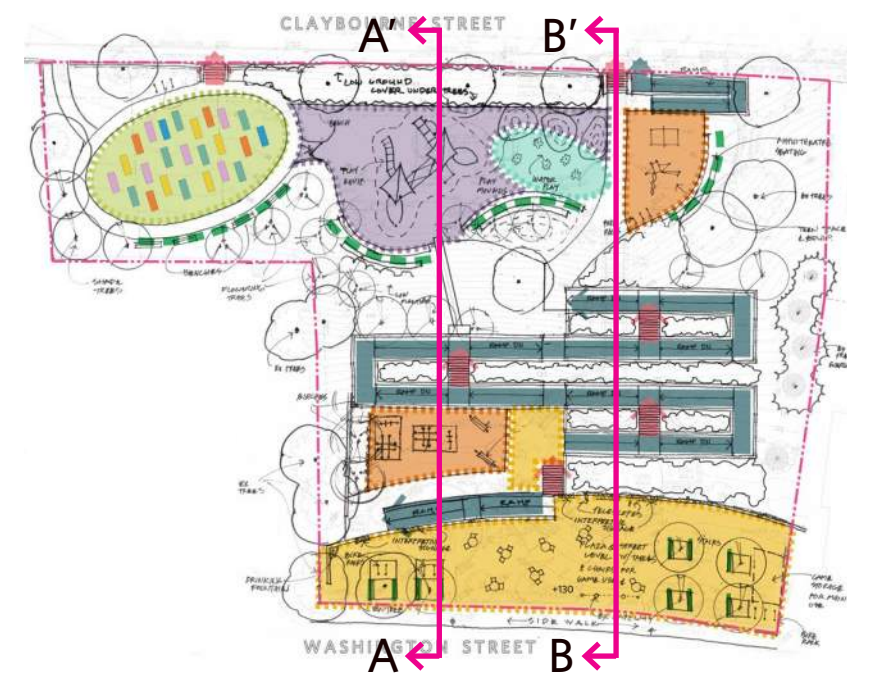
210 LF	RAMP	1500 FT ²	WATER PLAY	450 LF	SEATING
68	STAIRS	1000 FT ²	EXERCISE / TEEN	5000 FT ²	GREEN
3800 FT ²	PLAYGROUND	6500 FT ²	PLAZA		



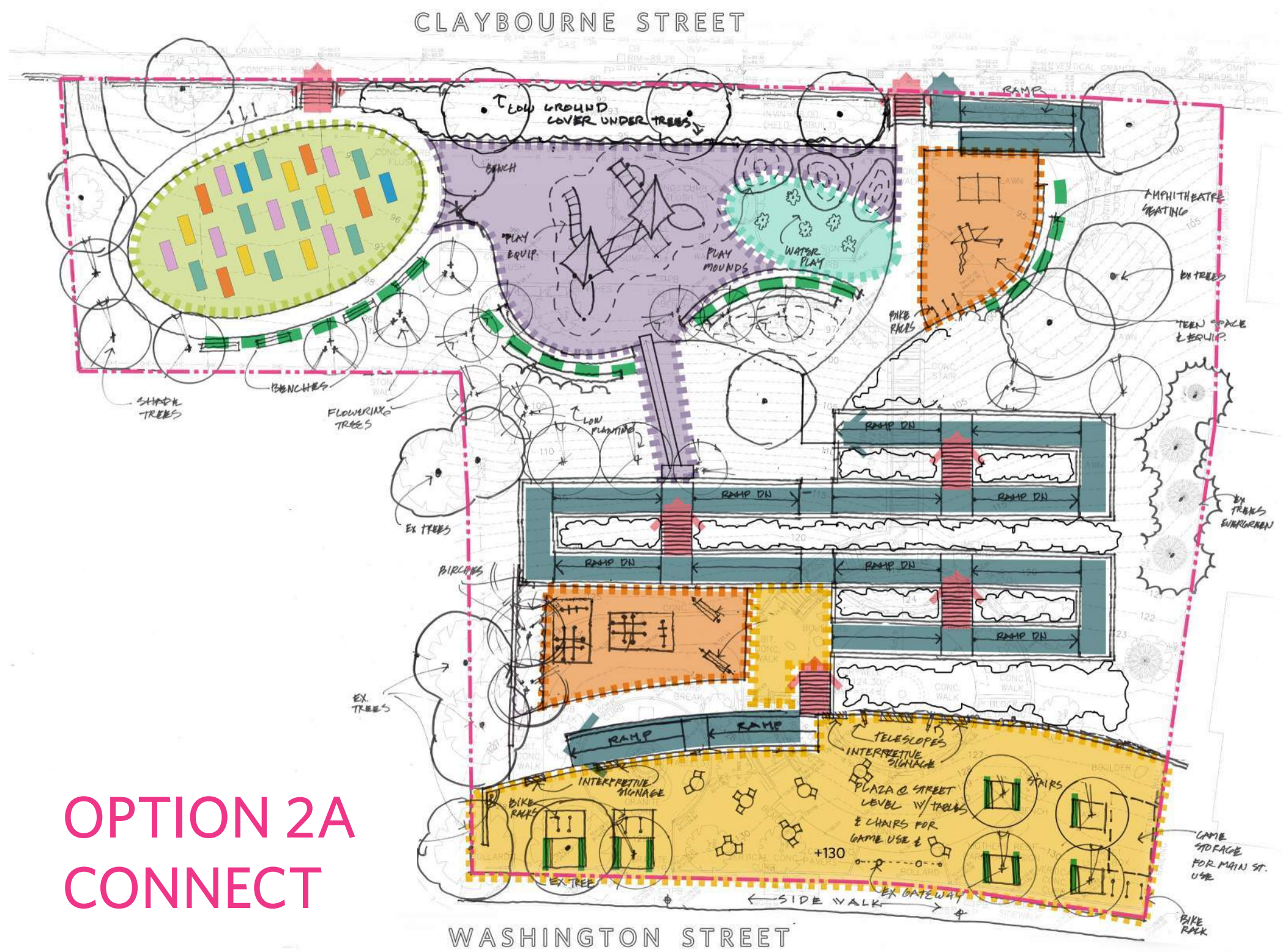
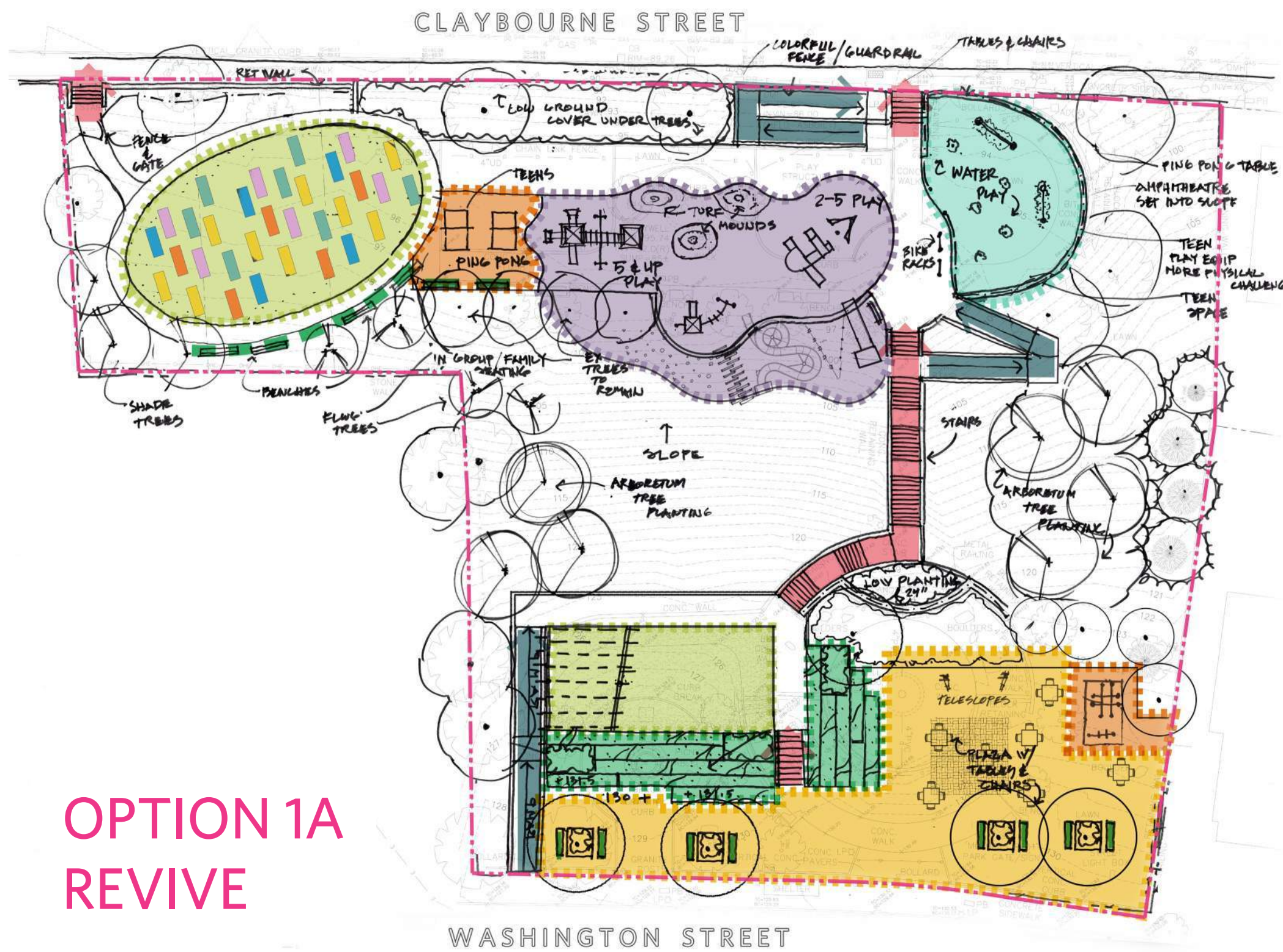
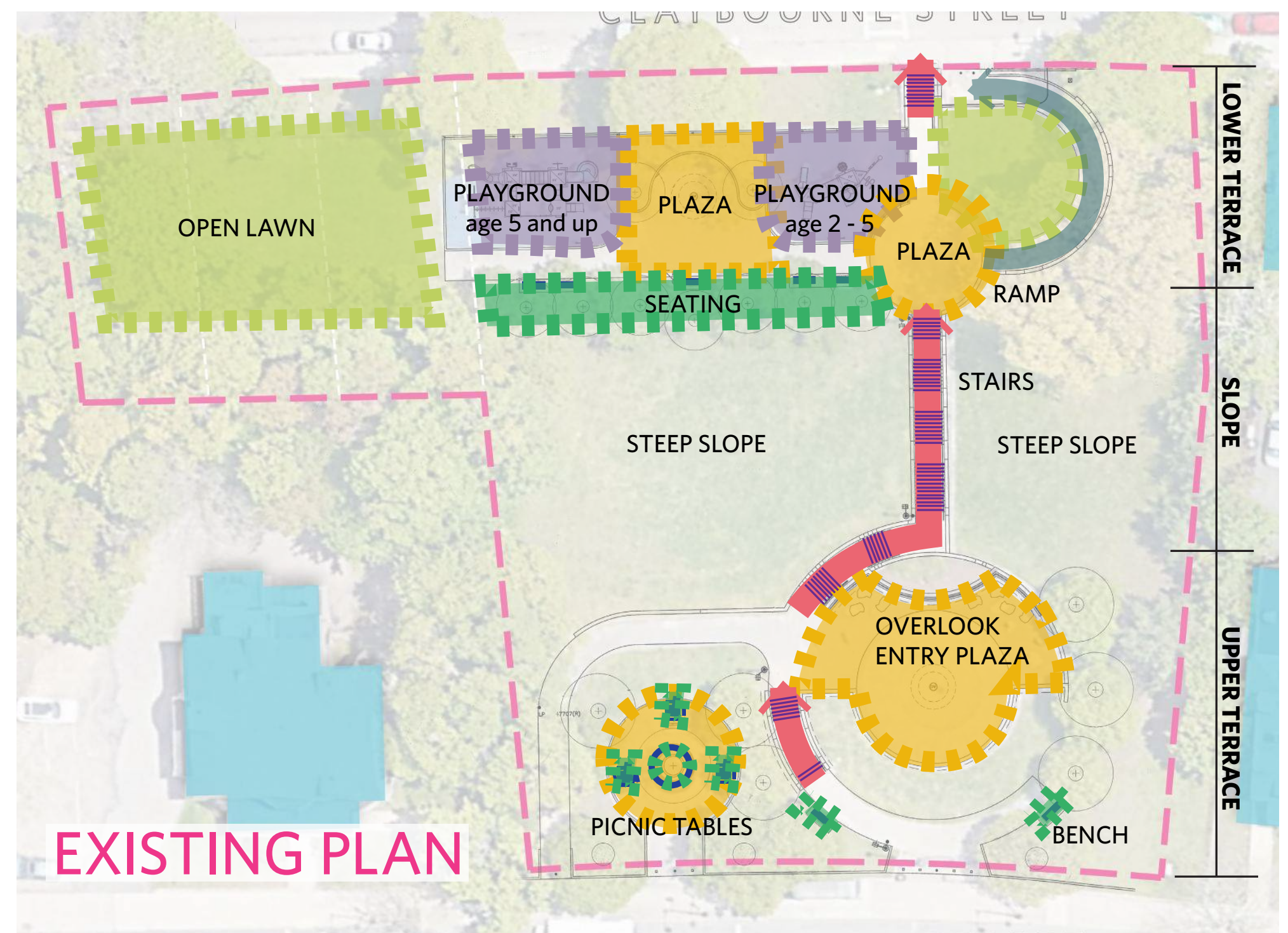
CLAYBOURNE STREET



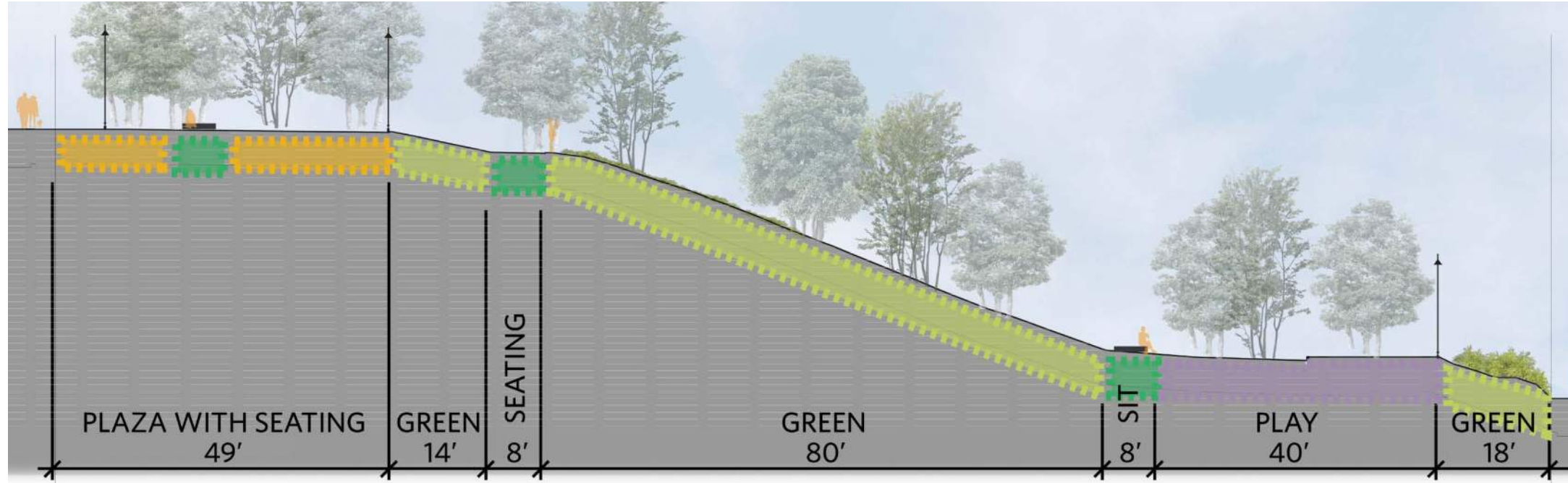
565 LF	RAMP	1200 FT ²	WATER PLAY	350 LF	SEATING
55	STAIRS	900 FT ²	EXERCISE / TEEN	3300 FT ²	GREEN
3200 FT ²	PLAYGROUND	6000 FT ²	PLAZA		



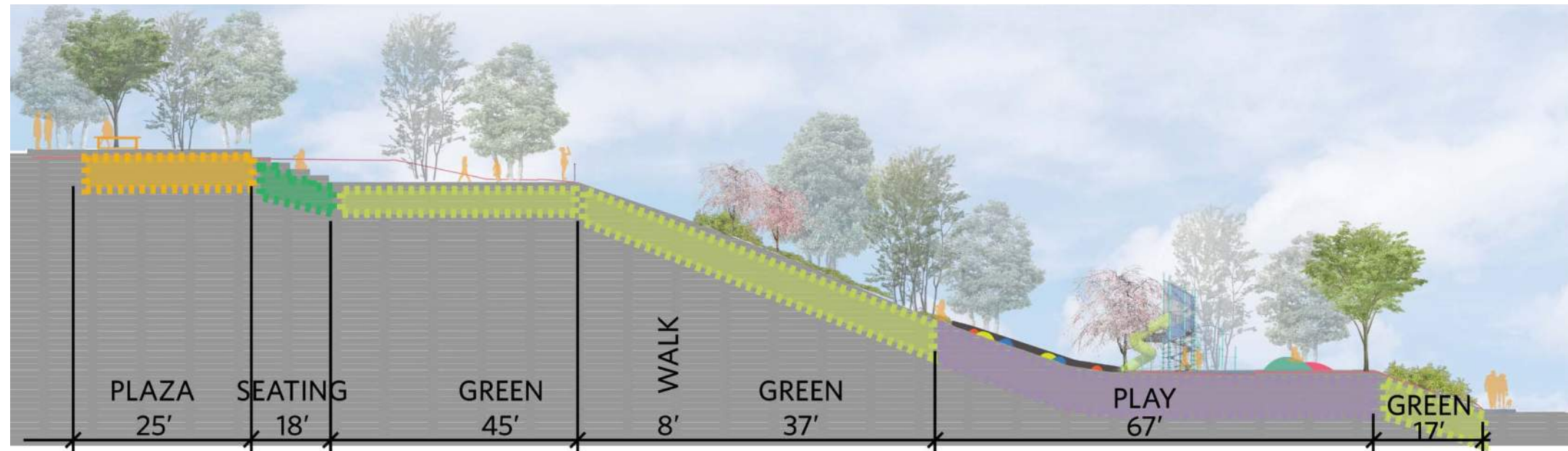
	EXISTING	OPTION 1A	OPTION 2A
RAMP (LF)	90	210	565
STAIRS	68	68	55
PLAYGROUND (FT ²)	2200	3800	3200
WATER PLAY (FT ²)	0	1500	1200
EXERCISE/TEEN (FT ²)	0	1000	900
PLAZA (FT ²)	5000	6500	6000
DOG PARK (FT ²)	0	1750	0
SEATING (LF)	130	450	350
GREEN (FT ²)	4600	5000	3300



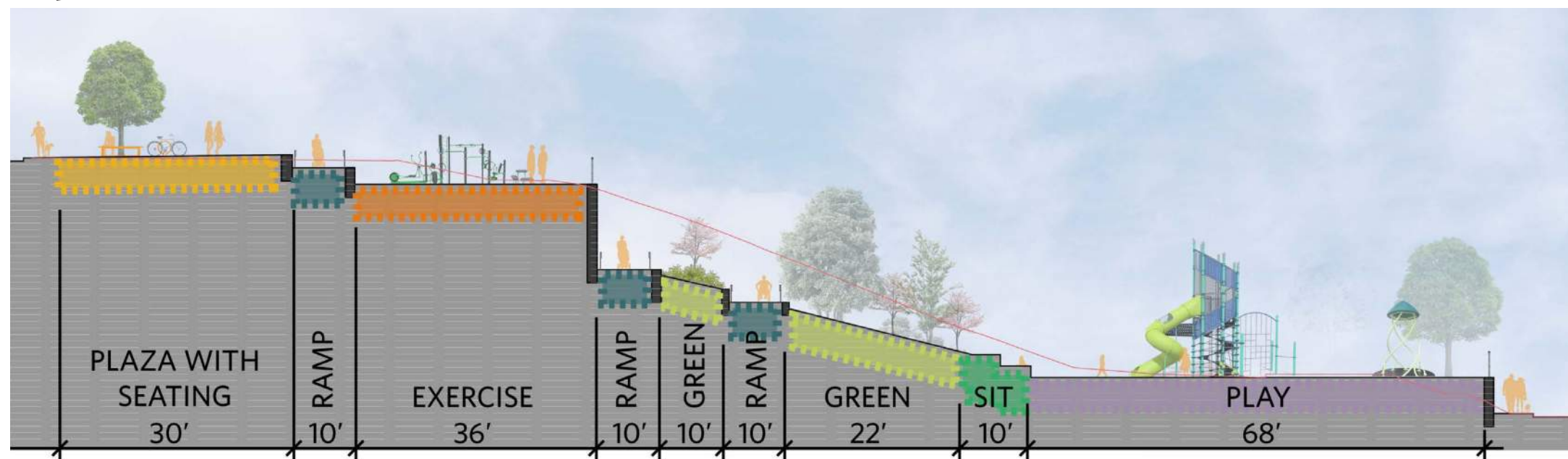
SECTION A-A'



Existing Plan



Option 1

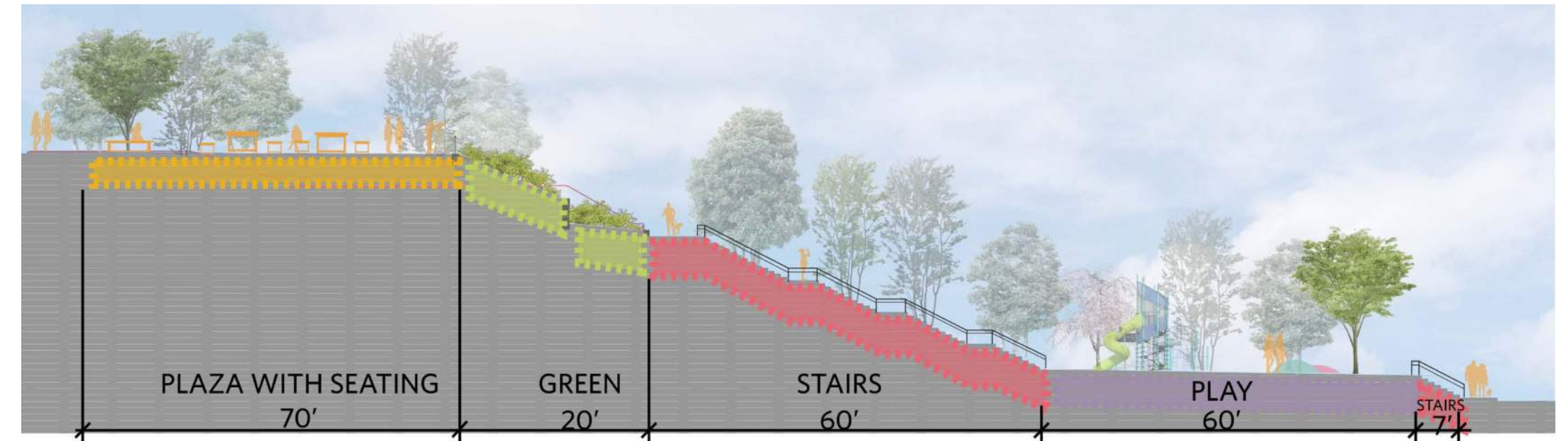


Option 2

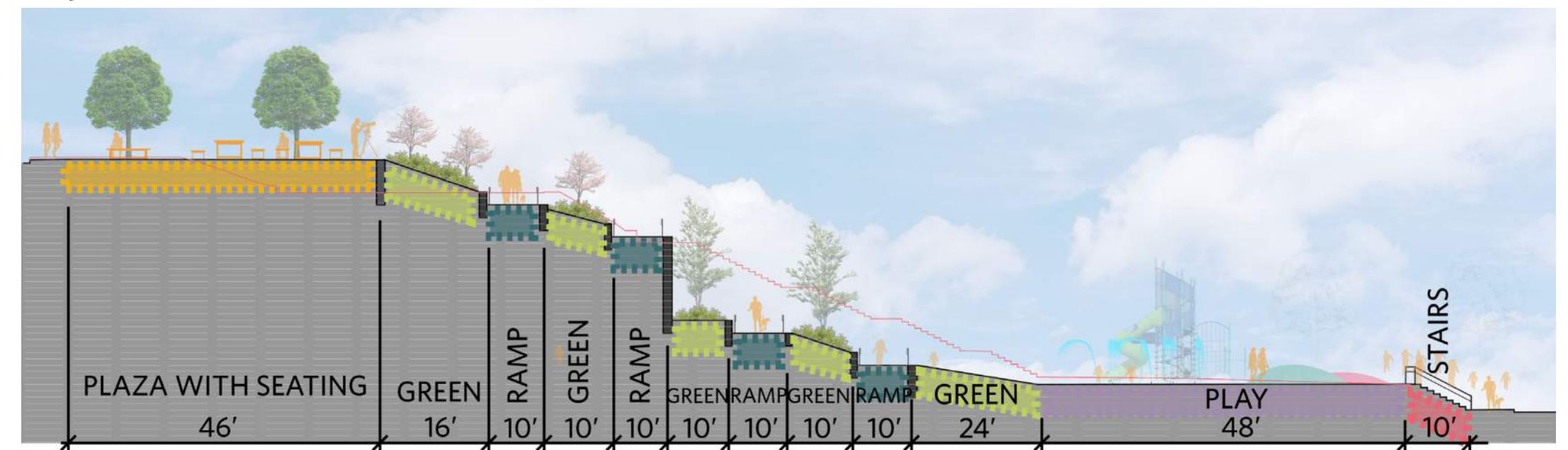
SECTION B-B'



Existing Plan



Option 1



Option 2







LISTENING & DISCUSSION

Help us build great parks.
Let us know what matters to you.



THANK YOU!

Next Meeting Winter 2021/2022

For questions, maintenance requests or concerns regarding any of our parks contact 311



December 9, 2021
Boston Parks and Recreation

