



#21 & #23 MARLBOROUGH STREET
FRONT ENTRY



#21 & #23 MARLBOROUGH STREET
Front Entry Improvements

- Paint Front Doors @ both #21 and #23 Marlborough
- Replace Light Fixtures @ both #21 and #23 Marlborough
- Siedle Intercom/Camera system @ 21 Marlborough
- Replace broken hardware (same fixture) at @21 Marlborough



EXISTING INTERCOM
@ #23 MARLBOROUGH



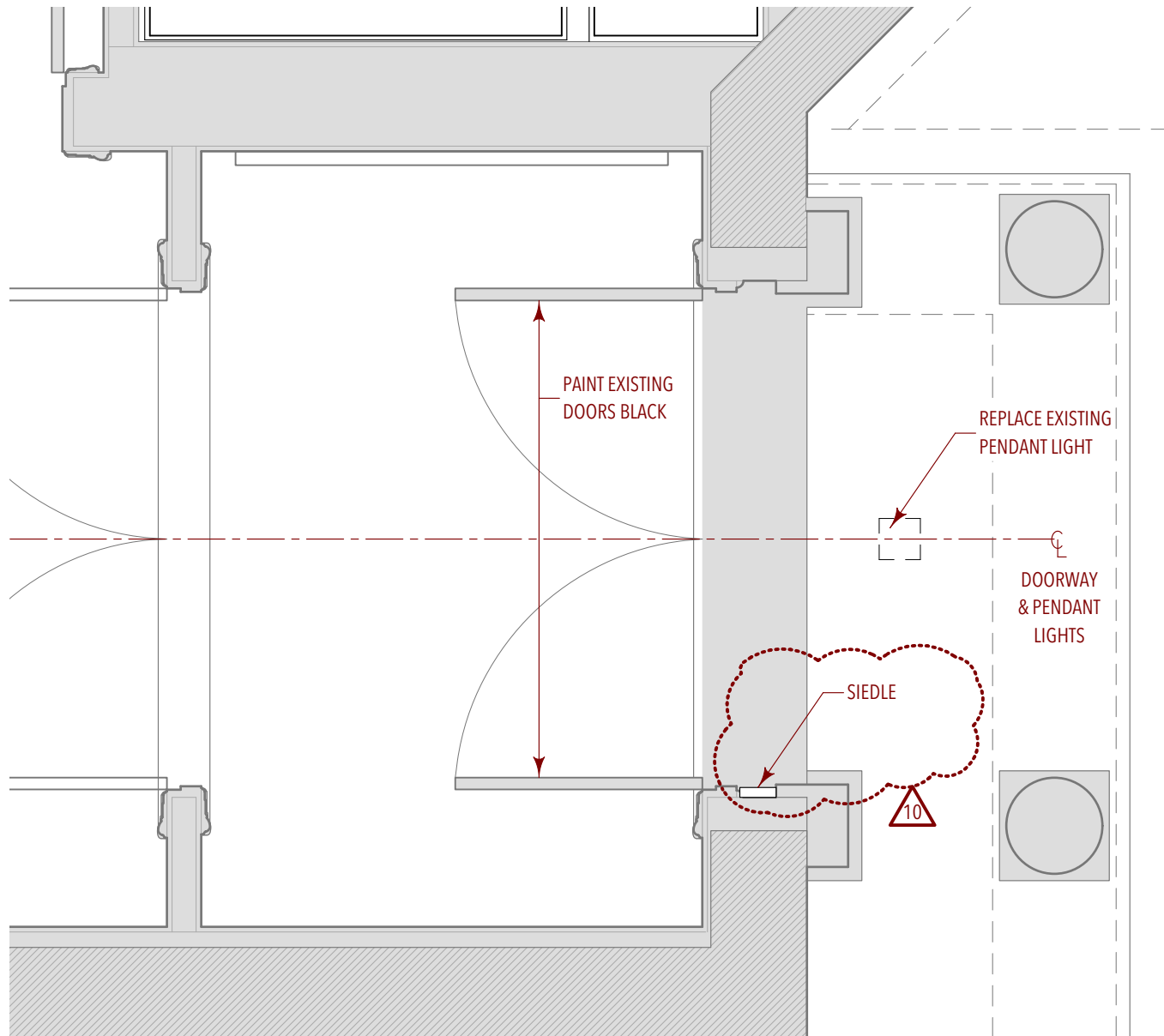
#23 MARLBOROUGH STREET
Existing Intercom



PROPOSED SIEDLE INTERCOM
@ #23 MARLBOROUGH



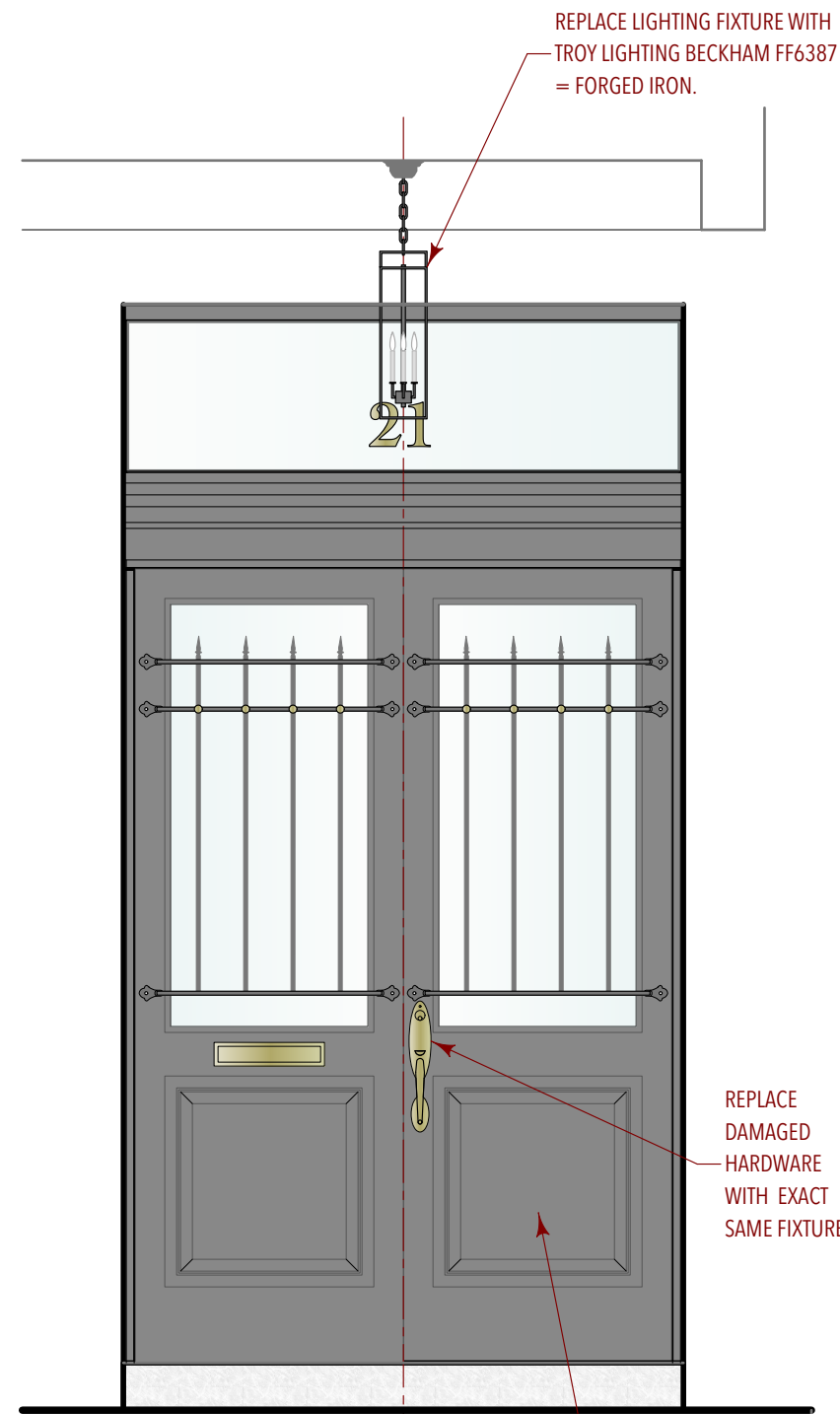
#21 MARLBOROUGH STREET
Front Entry Intercom Replacement
Location (Siedle Info next page)



1 PARTIAL PLAN: FRONT ENTRY EXTERIOR DOORWAY
Scale: 1/2" = 1'-0"



SIEDLE INTERCOM/CAMERA HOUSING
5.25" x 17" x 1 3/8"
'MICACEOUS DARK GREY COLOR (DB 703)



2 PARTIAL ELEV: FRONT DOOR #21
Scale: 1/2" = 1'-0"

PAINT DOORS
BENJAMIN MOORE
'BLACK', SEMI-GLOSS
2132-10

A + SL studios
Architects, inc.
54 Carver Road
Newton, MA 02459
Tel: 617-899-7462
www.aslstudios.com
info@aslstudios.com
NCARB, LEED, AP BD+C
THESE DRAWINGS ARE COPYRIGHT AND THE PROPERTY OF **asl studios, inc.** DRAWINGS AND OTHER MATERIALS ARE PROTECTED BY THE COPYRIGHT PROTECTION ACT.
FURTHER COPIES MUST NOT BE MADE WITHOUT PERMISSION.
asl studios, inc. SHALL ACCEPT NO LIABILITY FOR ANY USE MADE OF THE DRAWINGS OTHER THAN THAT FOR WHICH THEY WERE PREPARED.

21 M
Residential Unit Renovation
21 Marlborough Street
Boston, MA 02116

Exterior: Front Entry Cosmetic Improvements

REV: # 0520
DATE: 9/17/21
SCALE: As Noted

PROJECT #: 0520
SCALE: As Noted

CSK
10



BLACK

Black
2132-10

GOES WITH



SHADES



SIMILAR

Black Semi-GlossLRV: 2.48 

This color is part of Color Preview. A collection of bold, saturated colors that brings spaces to life for those looking to illuminate their world with pure, extraordinary color. A great complement to Classic Colors, Color Preview offers a collection of 1,232 hues that excite and inspire with pure, deep, clear colors that create striking combinations.



EXISTING PAINTED DOOR PRECEDENCE:
with Benjamin Moore Black 2132-10

BECKHAM

Product ID **F6387**



TROY LIGHTING

Est. 1963

