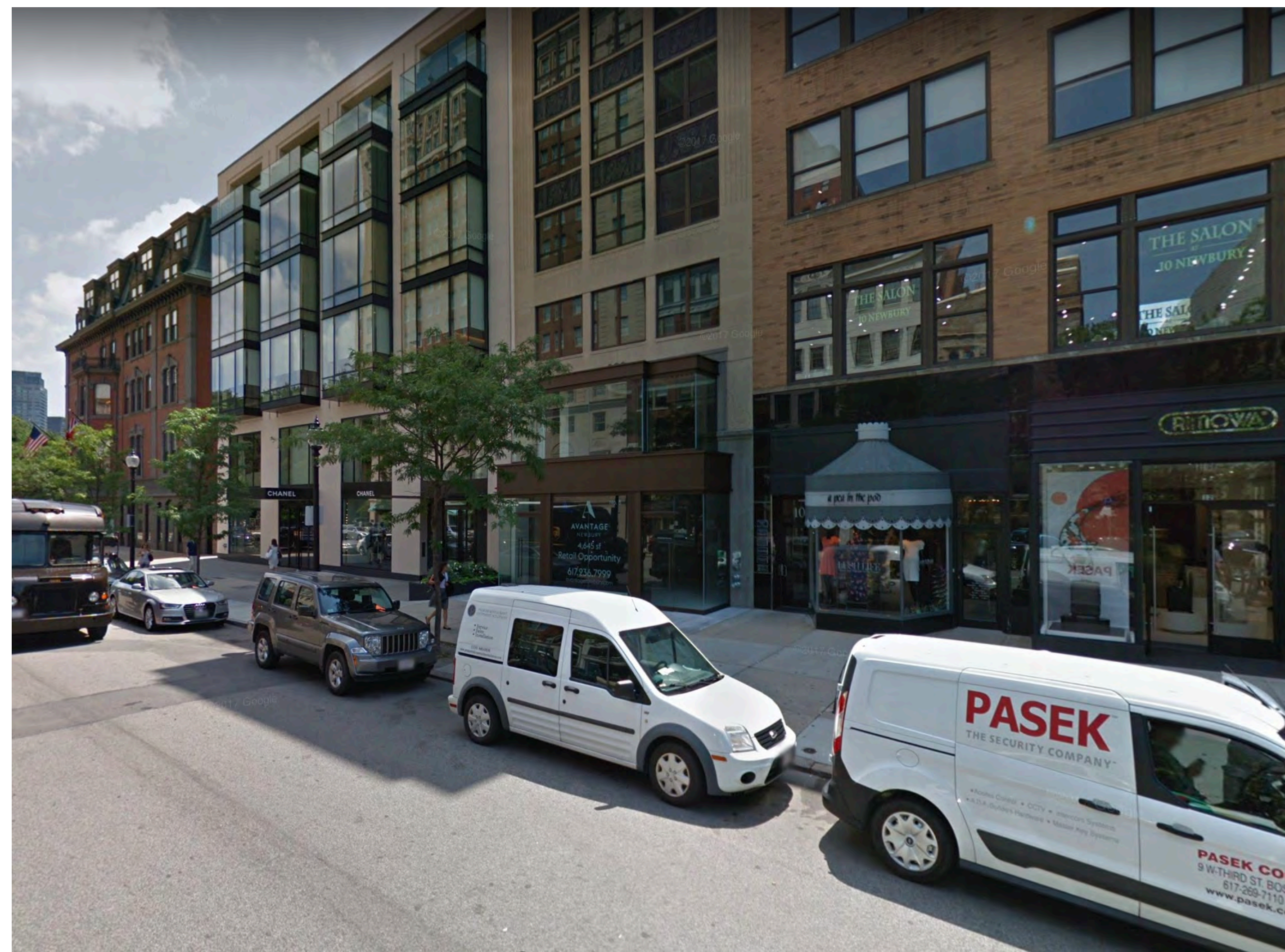


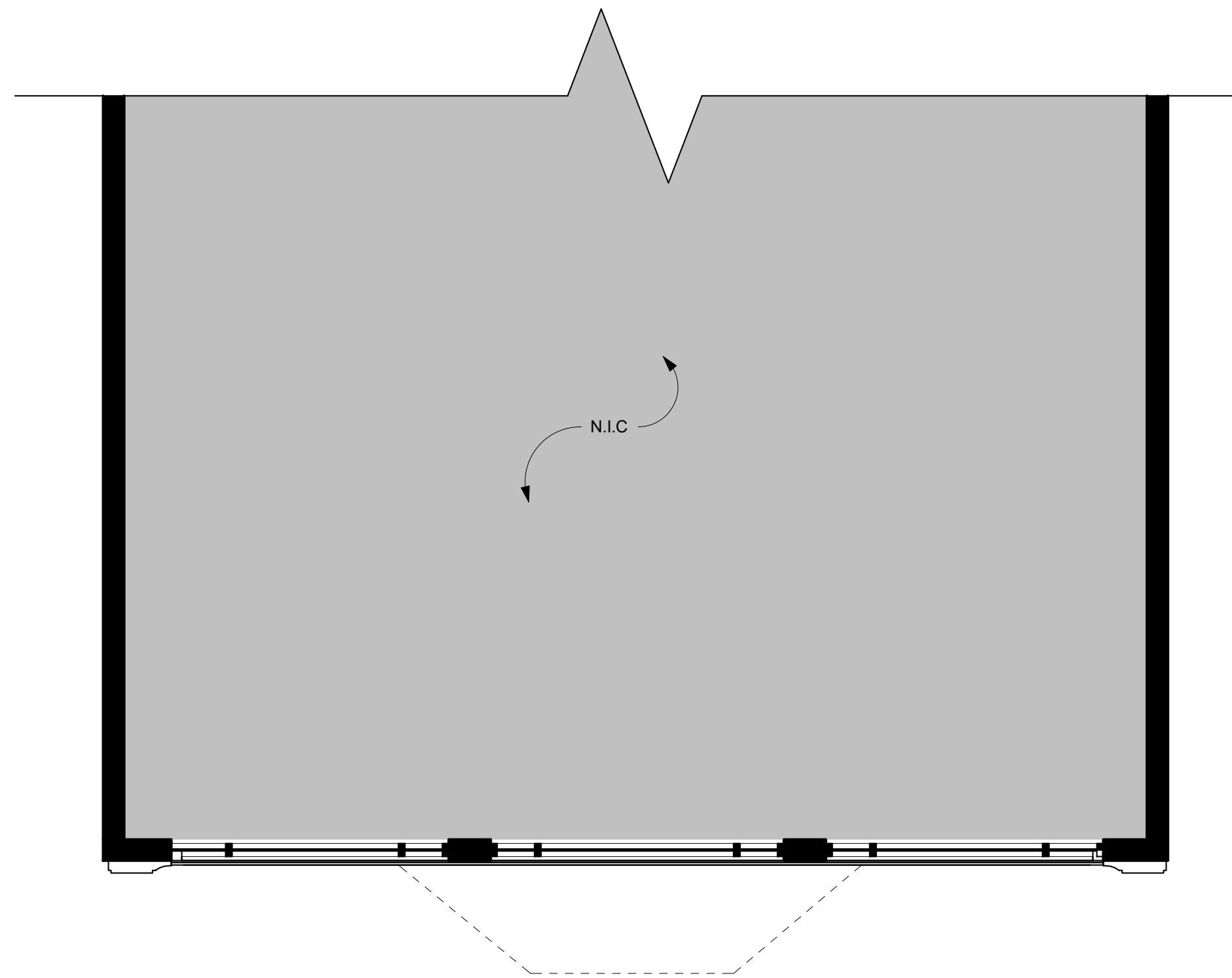
existing conditions photos

7 - 9 Newbury Street

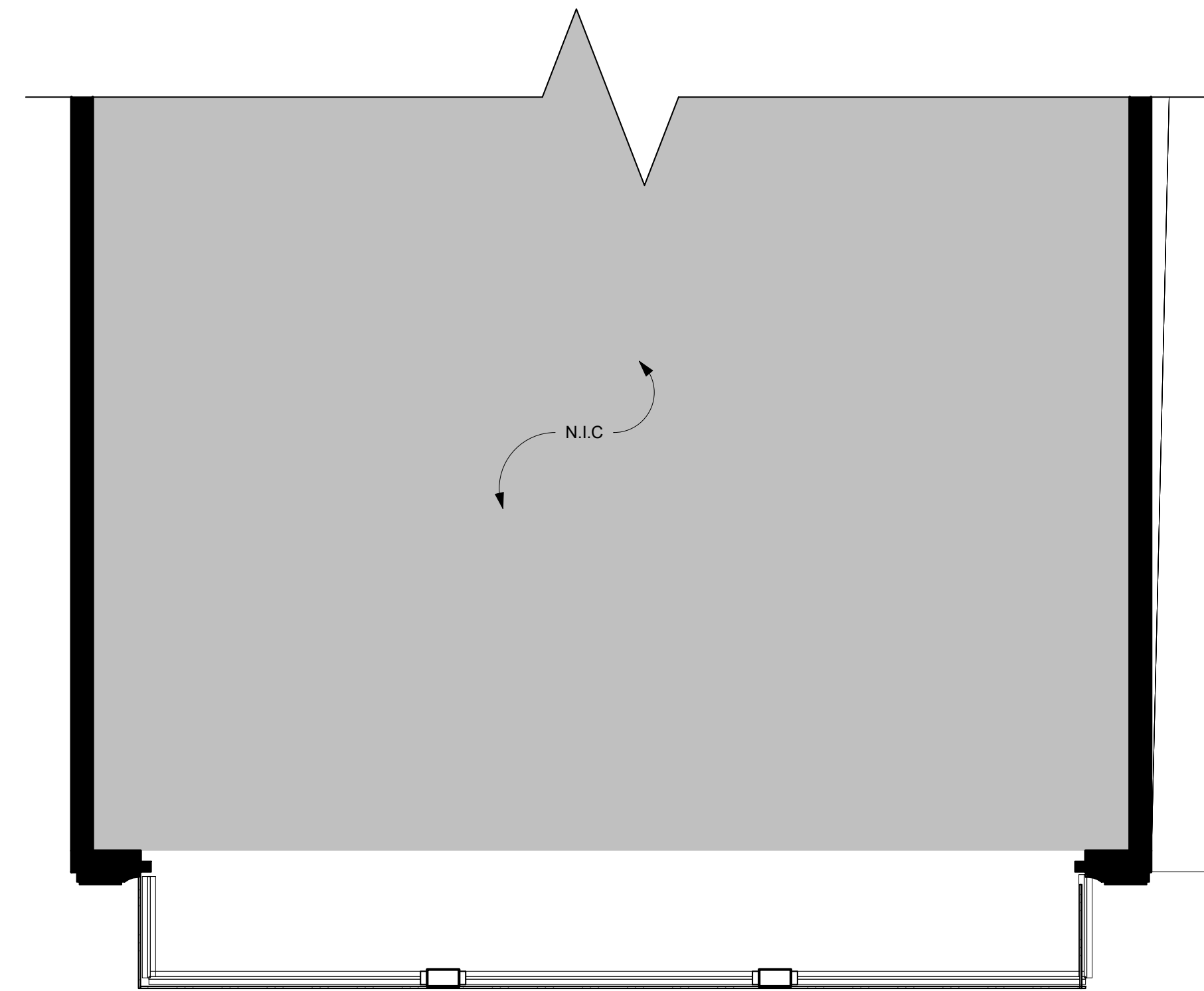


surrounding storefronts

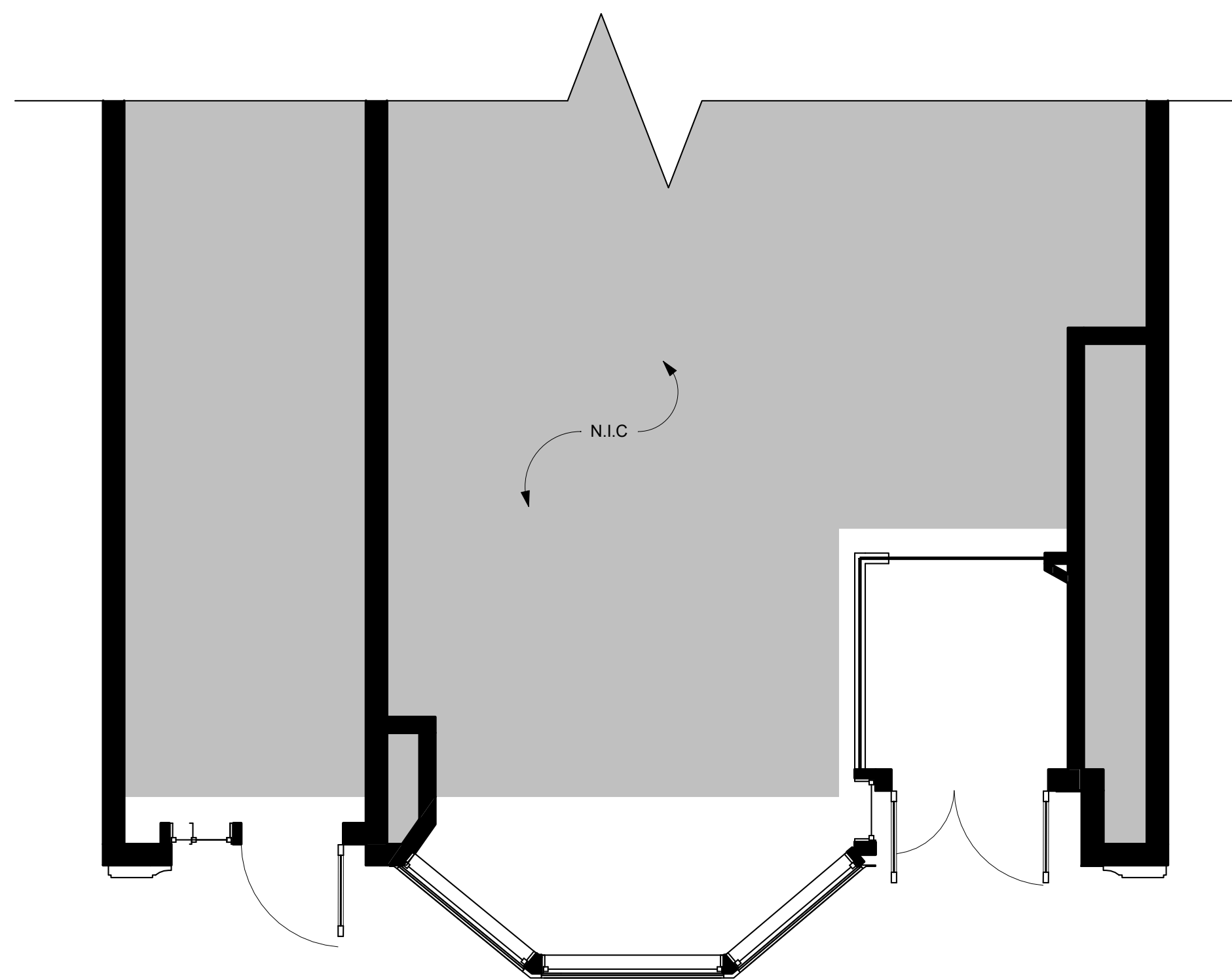
7 - 9 Newbury Street



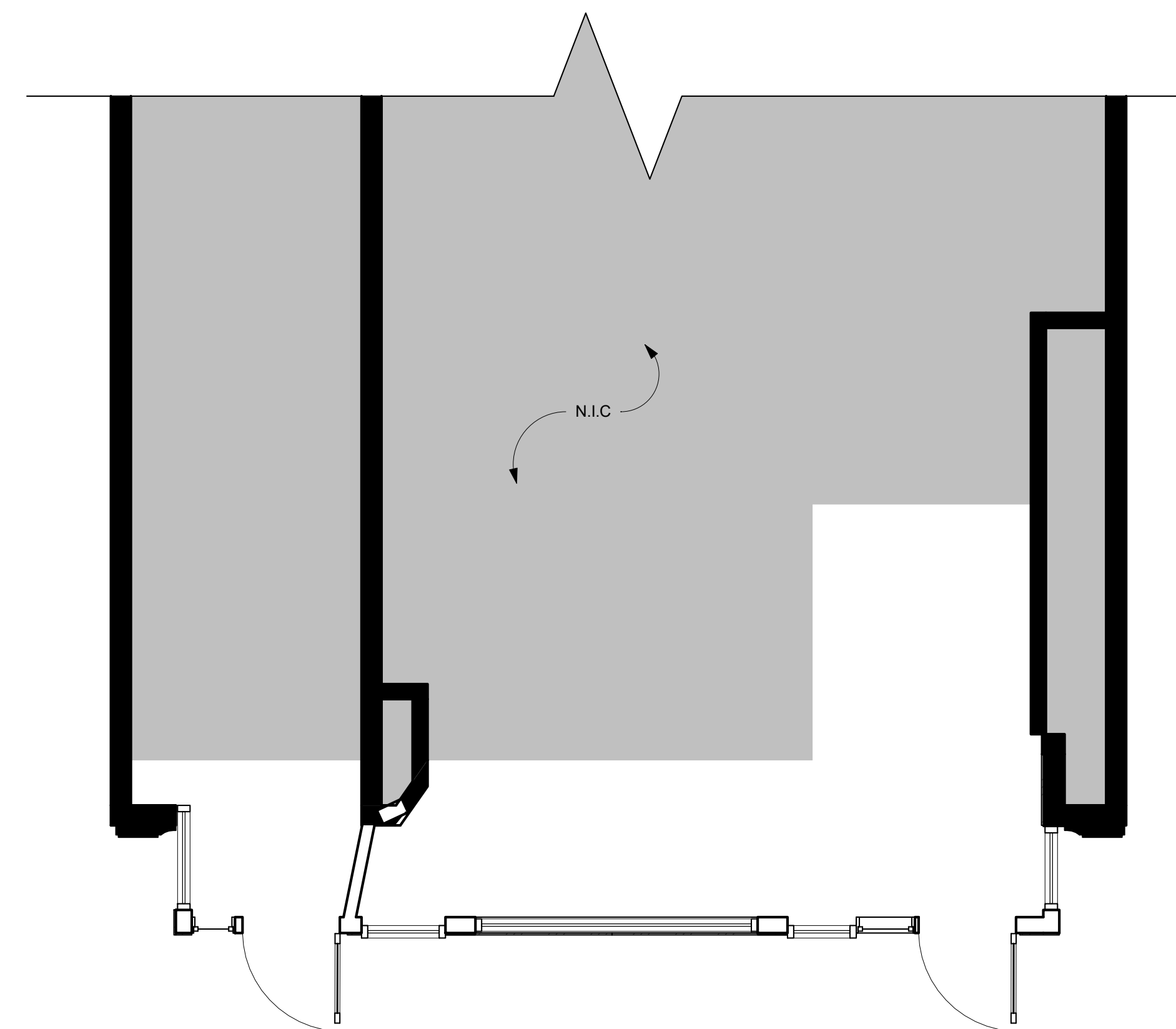
2 EXISTING SECOND FLOOR PLAN
1/4" = 1'-0"



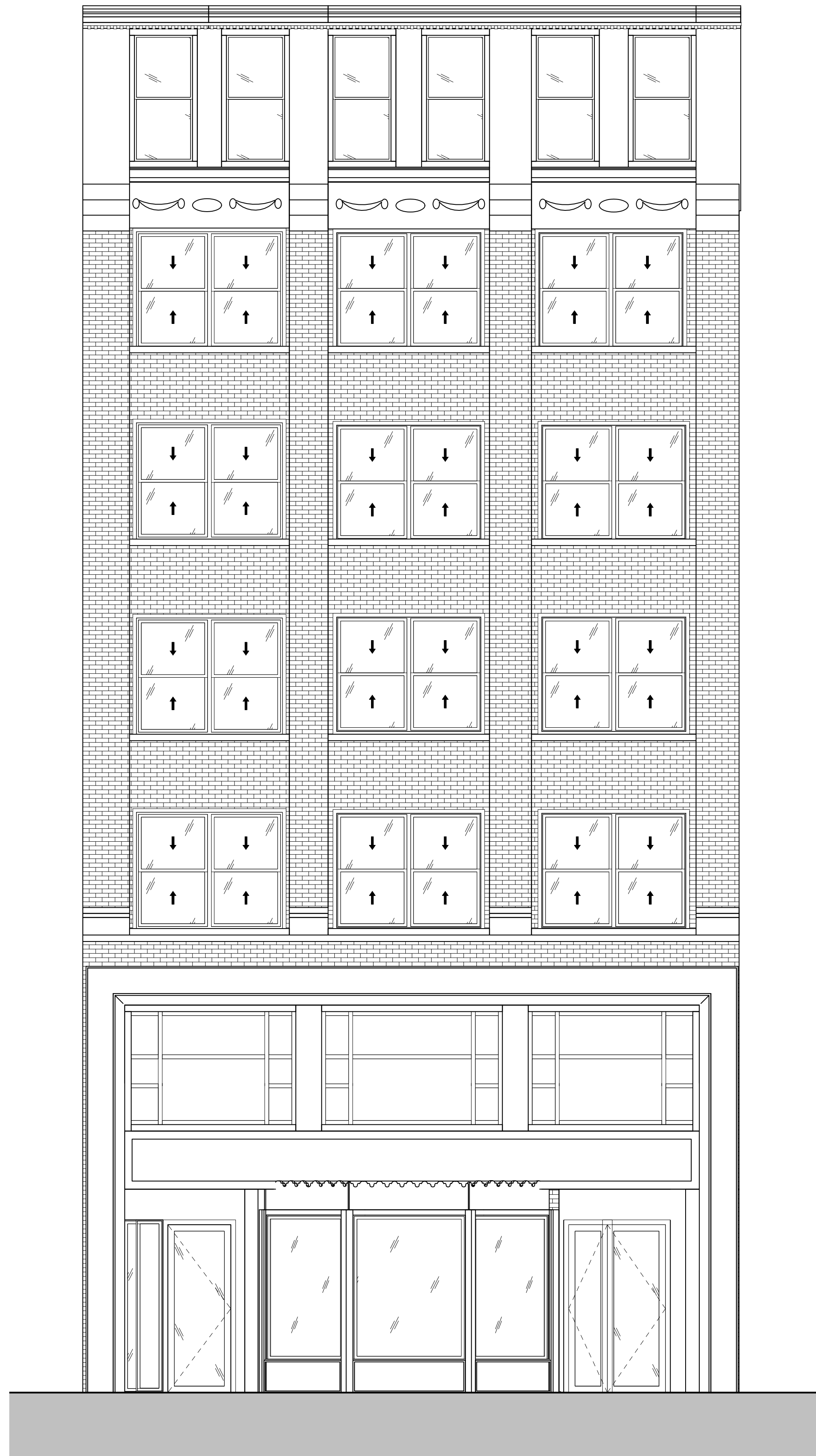
4 PROPOSED SECOND FLOOR PLAN
1/4" = 1'-0"



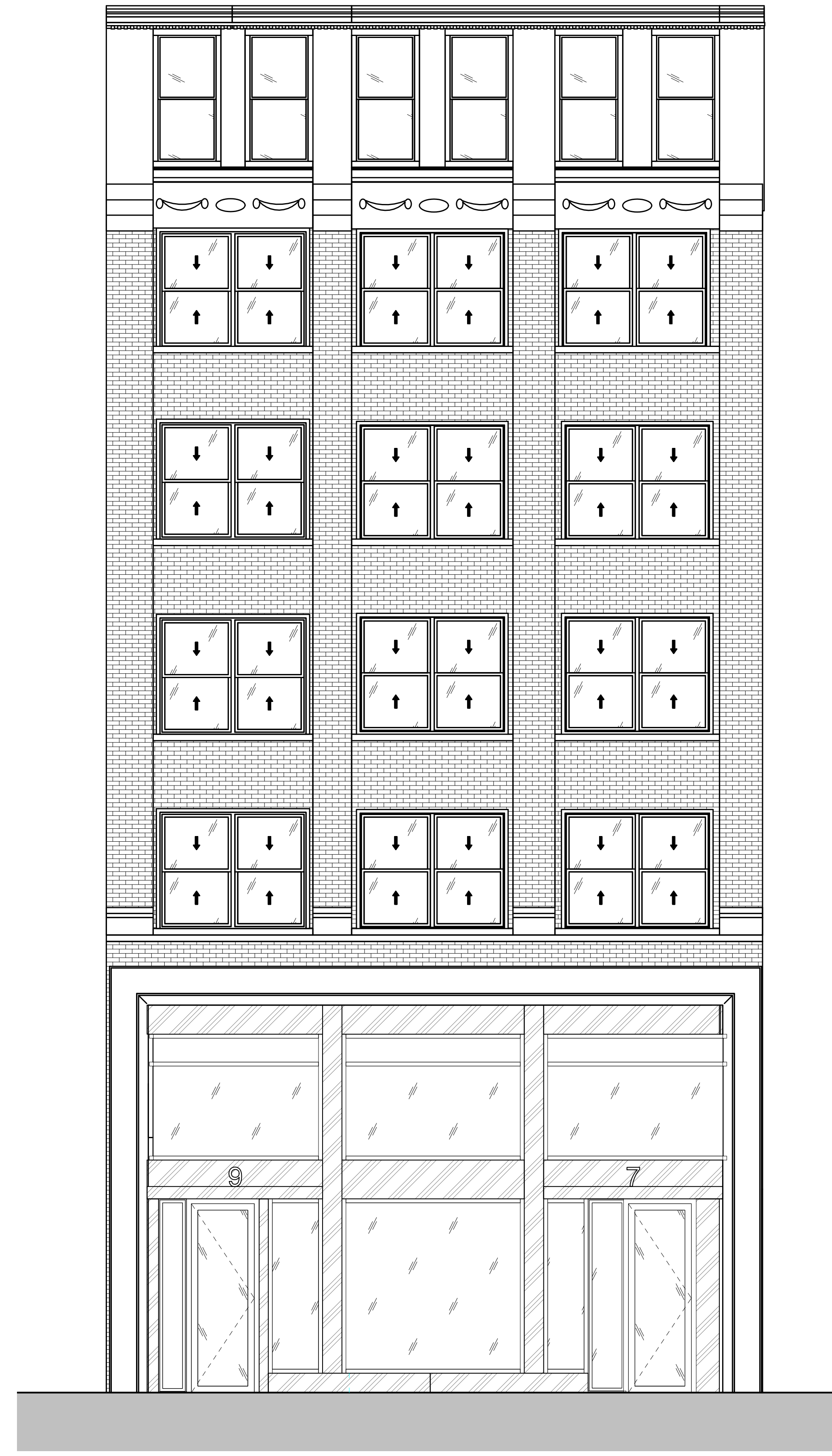
1 EXISTING FIRST FLOOR PLAN
1/4" = 1'-0"



3 PROPOSED FIRST FLOOR PLAN
1/4" = 1'-0"



1 EXISTING FRONT ELEVATION
1/4" = 1'-0"



2 PROPOSED FRONT ELEVATION
1/4" = 1'-0"



1 EXISTING PERSPECTIVE FROM LEFT



2 PROPOSED PERSPECTIVE FROM LEFT

7-9 NEWBURY STREET

PERSPECTIVE FROM LEFT APPROACH



1 EXISTING PERSPECTIVE FROM RIGHT



2 PROPOSED PERSPECTIVE FROM RIGHT

7-9 NEWBURY STREET

PERSPECTIVE FROM RIGHT APPROACH



1 EXISTING VIEW FROM ACROSS STREET



2 PROPOSED VIEW FROM ACROSS STREET

7-9 NEWBURY STREET

PERSPECTIVE FROM ACROSS NEWBURY ST



7-9 NEWBURY STREET

STOREFRONT RENDERING



7-9 NEWBURY STREET

STOREFRONT RENDERING