

McCONNELL PARK CONSTRUCTION UPDATE

JULY 2021



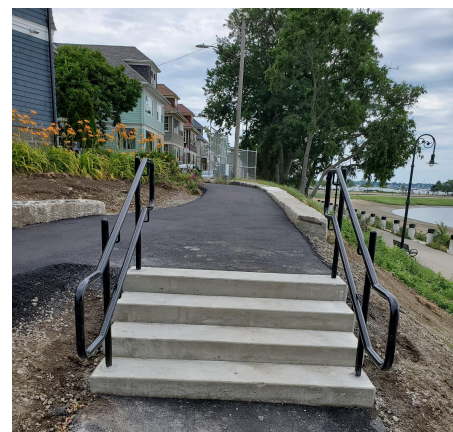
Thank you for your continued interest in the McConnell Park construction project!

WHAT TO EXPECT IN JULY:

- Playground walls and subgrade are in place. Play equipment will be delivered and installed this summer.
- Sports lighting foundations will be installed on the playing fields. Other foundations will be installed in the playing field for scoreboards and shade structures.
- Stone base foundation for the Challenger Field will begin after the perimeter concrete mow strip edge is poured.
- Utility work for drainage and electrical will begin.
- BPRD is assessing whether it is possible to place temporary trash barrels in the portion of the park that is accessible to vehicles.

ACCESS TO MALIBU BEACH

- The access to the Harborwalk has been restored from Bayside Street and Southview Street. There is also an accessible route from Denny Street. Minor refinements are still underway.
- Railings were installed on the new steps ahead of schedule.
- Fine grading of planting areas, loam, seed, plantings, and trees will follow in the Fall (planting is recommended in cooler seasons for viability of installation).
- The temporary access to the Dorchester Yacht Club and DCR parking lot was shifted to the east to allow demolition to be completed. This configuration will continue throughout the summer.



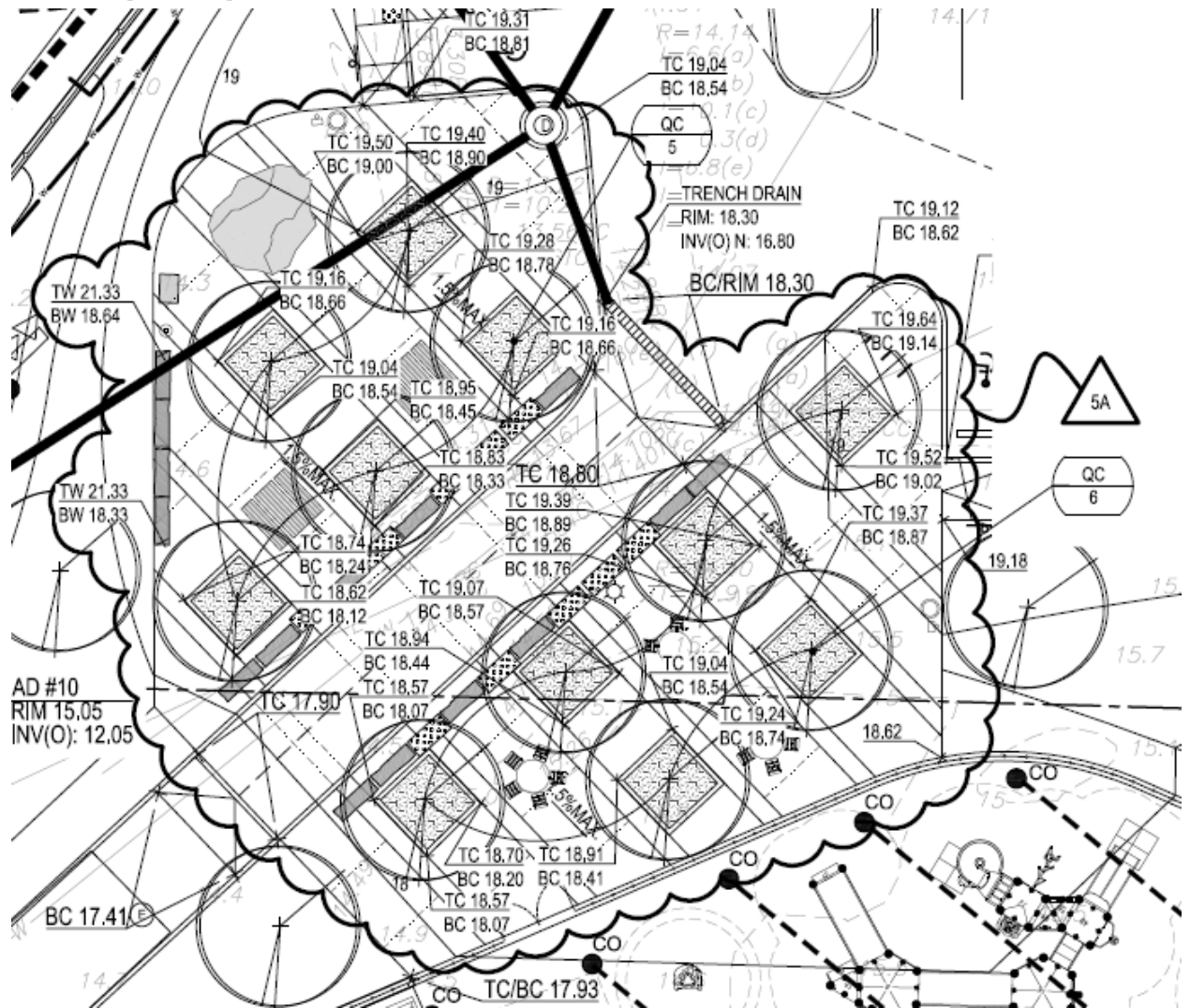
TREES:

- In 2020, the City discovered Emerald Ash Borer in some Ash trees (*Fraxinus spp.*). EAB is a major threat to the urban canopy, but the threat can be slowed through insecticidal treatments. Approximately 12 of the trees at the top of the slope between Denny and Bayside are ashes. In July, we will begin injections for pre-treatment to protect these trees, which do not appear to be currently affected by

EAB. The injection treatment will continue for the next few years as we continue to monitor the canopy citywide.

DESIGN CHANGES:

- 5 trees will replace the 2 trees on the slope near Southview Street that were removed for structural reasons. Proposed replacements are Pin Oaks and Scarlet Oaks, both native trees. Final tree species is subject to availability.
- Shade is needed in the plaza, and we will be adding trees to the plaza area. The design team has developed the sketch below, which is being priced. Trees proposed are Scarlet Oaks, a native oak that does well in wetter conditions. They will be installed in mulch beds, similar to street trees. Boulders are placed between the tree pits and the vehicle access to provide protection.



- The revised overall project net increase of trees: **+44 trees**

NEIGHBORHOOD PARKING:

Pat Fandel at the Mayor's Office of Neighborhood Services has requested that neighborhood parking issues be directed to 311 (or www.boston.gov/311). This will allow him to document the need for relief and coordinate with BTM.

OTHER ITEMS:

Over the long weekend and throughout the summer, please use [311](http://www.boston.gov/311) to document non-emergency issues relating to park use, and 911 for emergency situations relating to public safety. Construction questions and concerns can be directed to Cathy Baker-Eclipse, Project Manager for Boston Parks and Recreation (cathy.baker-eclipse@boston.gov).

Project Website:

<https://www.boston.gov/departments/parks-and-recreation/improvements-mcconnell-playground>

Please reach out with any additional questions. cathy.baker-eclipse@boston.gov or 617-961-3058.