

# MASSACHUSETTS AVENUE BETTER BIKE PROJECT

June 5, 2020



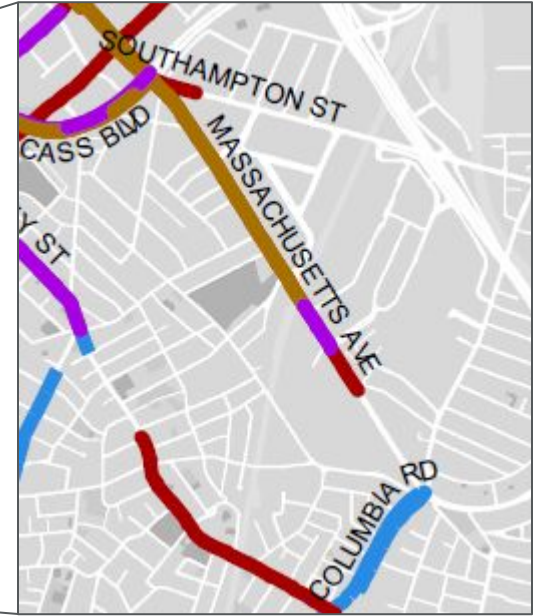
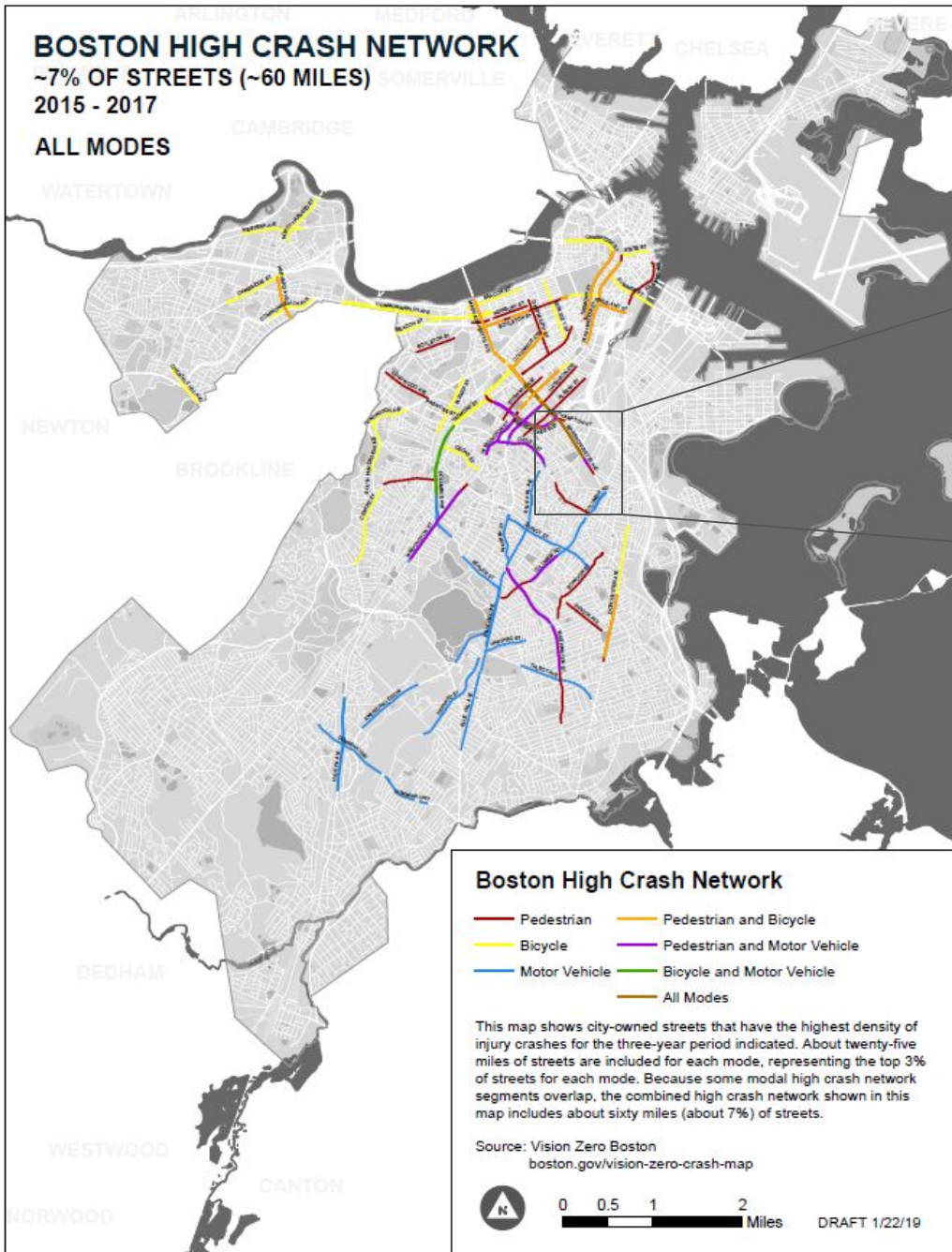
*Mass Ave*

# BOSTON HIGH CRASH NETWORK

~7% OF STREETS (~60 MILES)

2015 - 2017

ALL MODES



## Boston High Crash Network

- Pedestrian
- Bicycle
- Motor Vehicle
- Pedestrian and Bicycle
- Pedestrian and Motor Vehicle
- Bicycle and Motor Vehicle
- All Modes



GERAPO

25

DI PIERRO  
DESIGN - BUILD - REMODEL

Best Western PLUS



*Greetings from...*

**NEWMARKET**

*Boston, Massachusetts*

# WHAT WE'VE DONE SO FAR

# PRIORITIZED THE PROJECT

- ▶ *Prioritized by the public through the Go Boston 2030 process (2017)*
- ▶ *Council advocated for inclusion in the city's FY20 budget (spring 2019)*





# INITIATED DESIGN PROCESS

## CONCEPT DESIGN

- ▶ Review past findings, identify existing conditions
- ▶ Conduct outreach, identified key interests of stakeholders and users
- ▶ Test design alternatives
- ▶ Accurate traffic model using existing user volumes

## 25% DESIGN

- ▶ Set the basics of the proposed design, swept-path analysis to confirm
- ▶ Preliminary traffic signal phasing and timing
- ▶ First draft of curb ramps



*We're  
here*

## 75% DESIGN

- ▶ Fully detailed and revised traffic signal phasing and timing
- ▶ Detailed plans for curb ramps and drainage
- ▶ Adjustments to any lane dimensions, pavement markings, and signs

## PIC

- ▶ Official sign-off on all constructed elements from the Public Improvement Commission

## 100% DESIGN

- ▶ Continued refinements to traffic signal phasing and timing; curb ramps; and drainage
- ▶ Last tweaks to all other elements
- ▶ Final draft of temporary traffic management plans

## FINAL DESIGN

- ▶ All issues noted in thorough design review have been approved
- ▶ Signed by City Engineer
- ▶ Delivered to contractor to begin work

# REVIEWED PAST FINDINGS

---

- ▶ *Access Boston (2001)*
- ▶ *Boston Bike Plan (2013)*
- ▶ *South Bay Town Center (2015)*
- ▶ *Alternatives Evaluation - Massachusetts Ave at Newmarket Square (2016)*
- ▶ *1258-1272 Massachusetts Avenue (2016)*
- ▶ *Go Boston 2030 (2017)*
- ▶ *Jan Karski Way Extension (2019)*
- ▶ *PLAN Newmarket (ongoing)*

# CONDUCTED RESIDENT OUTREACH

- ▶ *Flyered light posts and all residences along corridor*
- ▶ *Conducted walk/ride tours*
- ▶ *Presented at civic association meetings*
  - *Columbia-Savin Hill*
  - *Hancock Street*
  - *Jones Hill*
  - *Eastman-Elder*
  - *McCormack Executive Board*
  - *McCormack*
  - *Polish Triangle United*
  - *Uphams Corner Westside*



# CONDUCTED BUSINESS OUTREACH

---

- ▶ *Delivered an informational flyer to every open business on the corridor*
  - *Returned twice to ensure every business had been visited*
- ▶ *Presented at Newmarket Business Association Meetings*
- ▶ *Followed up via 1:1 conversations with specific businesses:*
  - *Di Pierro Construction*
  - *Ace Plumbing*
  - *Best Western Roundhouse Suites*
  - *South Bay Auto Body*
  - *Victory Programs*
  - *Home Run Cafe*
  - *Edens*
  - *Dorchester Brewing Co.*

# IDENTIFIED DESIGN PRIORITIES

---

## ▶ ***Safety of people biking and walking***

- *Separated bike lanes*
- *Intersection design*
- *Pedestrian signal phases*

## ▶ ***Flow of buses, trucks, and cars***

- *Multiple bus routes*
- *Trucks*
- *Newmarket/Shirley*
- *Columbia Rd*

## ▶ ***Use of the curbside***

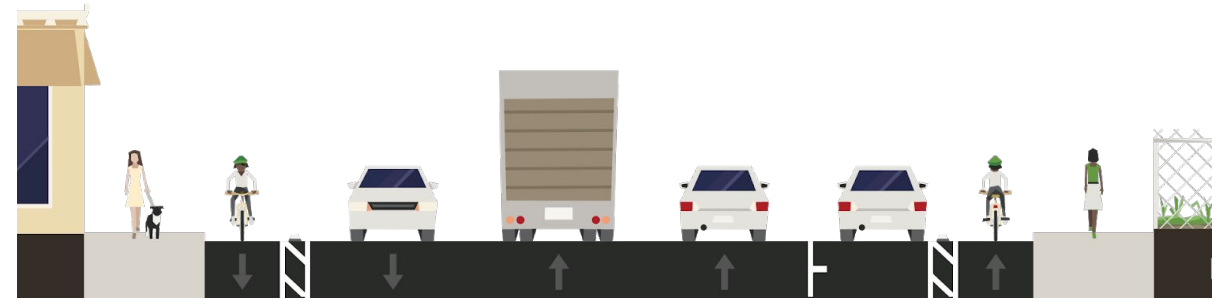
- *Commercial loading for businesses*
- *Parking for businesses and organizations*
- *Parking for 1010 Mass Ave*

## ▶ ***Planning for the future***

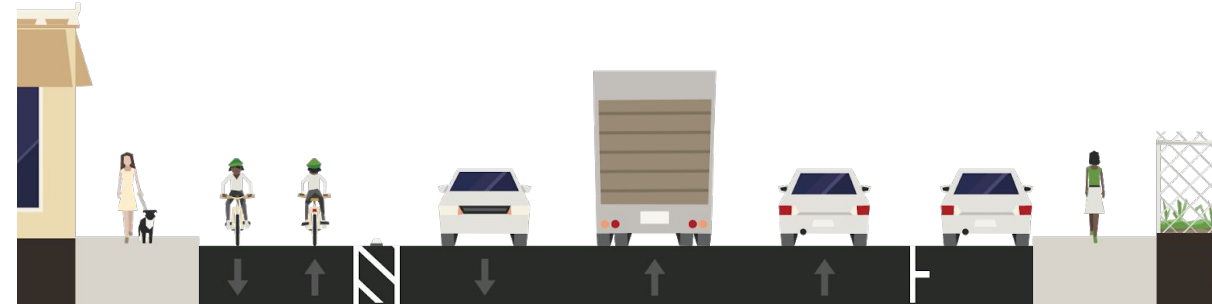
- *Plan Newmarket*
- *Sidewalk reconstruction*
- *Development*

# ANALYZED ALL POTENTIAL CONCEPTS

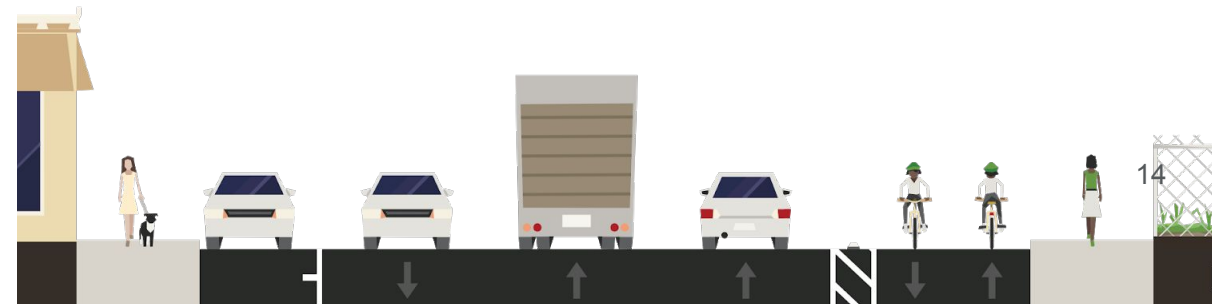
Pair of one-way separated bike lanes (SBLs)



Two-way SBL along eastern curb



Two-way SBL along western curb



# REVIEWING 25% DESIGNS

## CONCEPT DESIGN

- ▶ Review past findings, identify existing conditions
- ▶ Conduct outreach, identified key interests of stakeholders and users
- ▶ Test design alternatives
- ▶ Accurate traffic model using existing user volumes

## 25% DESIGN

- ▶ Set the basics of the proposed design, swept-path analysis to confirm
- ▶ Preliminary traffic signal phasing and timing
- ▶ First draft of curb ramps



*We're  
here*

## 75% DESIGN

- ▶ Fully detailed and revised traffic signal phasing and timing
- ▶ Detailed plans for curb ramps and drainage
- ▶ Adjustments to any lane dimensions, pavement markings, and signs

## PIC

- ▶ Official sign-off on all constructed elements from the Public Improvement Commission

## 100% DESIGN

- ▶ Continued refinements to traffic signal phasing and timing; curb ramps; and drainage
- ▶ Last tweaks to all other elements
- ▶ Final draft of temporary traffic management plans

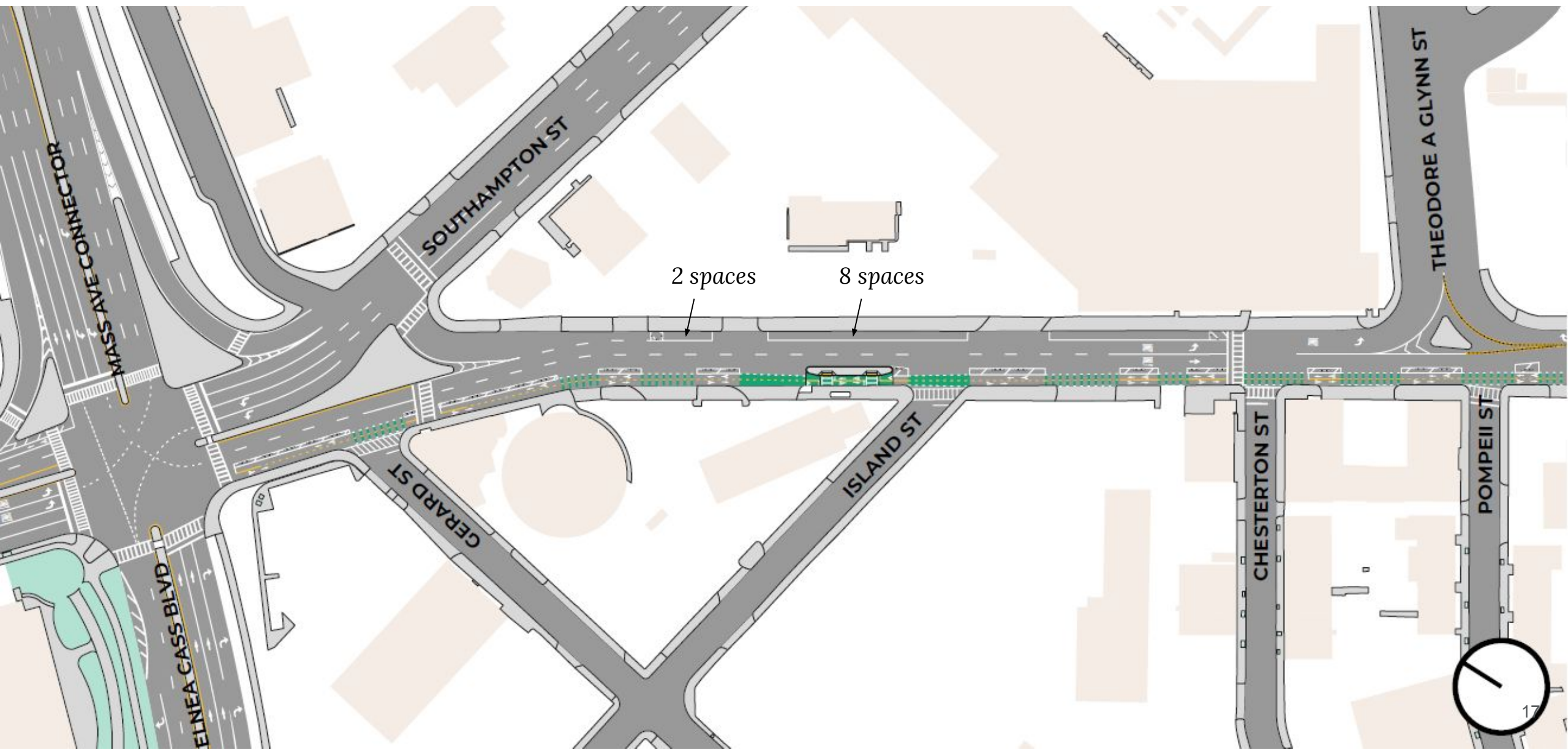
## FINAL DESIGN

- ▶ All issues noted in thorough design review have been approved
- ▶ Signed by City Engineer
- ▶ Delivered to contractor to begin work

**MELNEA TO  
THEO GLYNN**

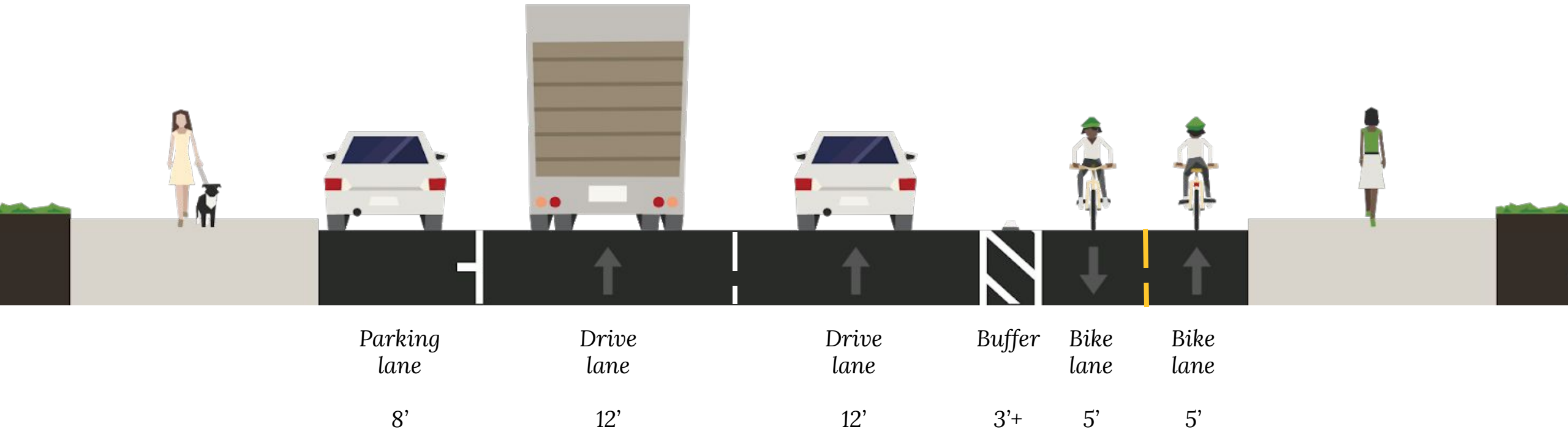


# PLAN VIEW



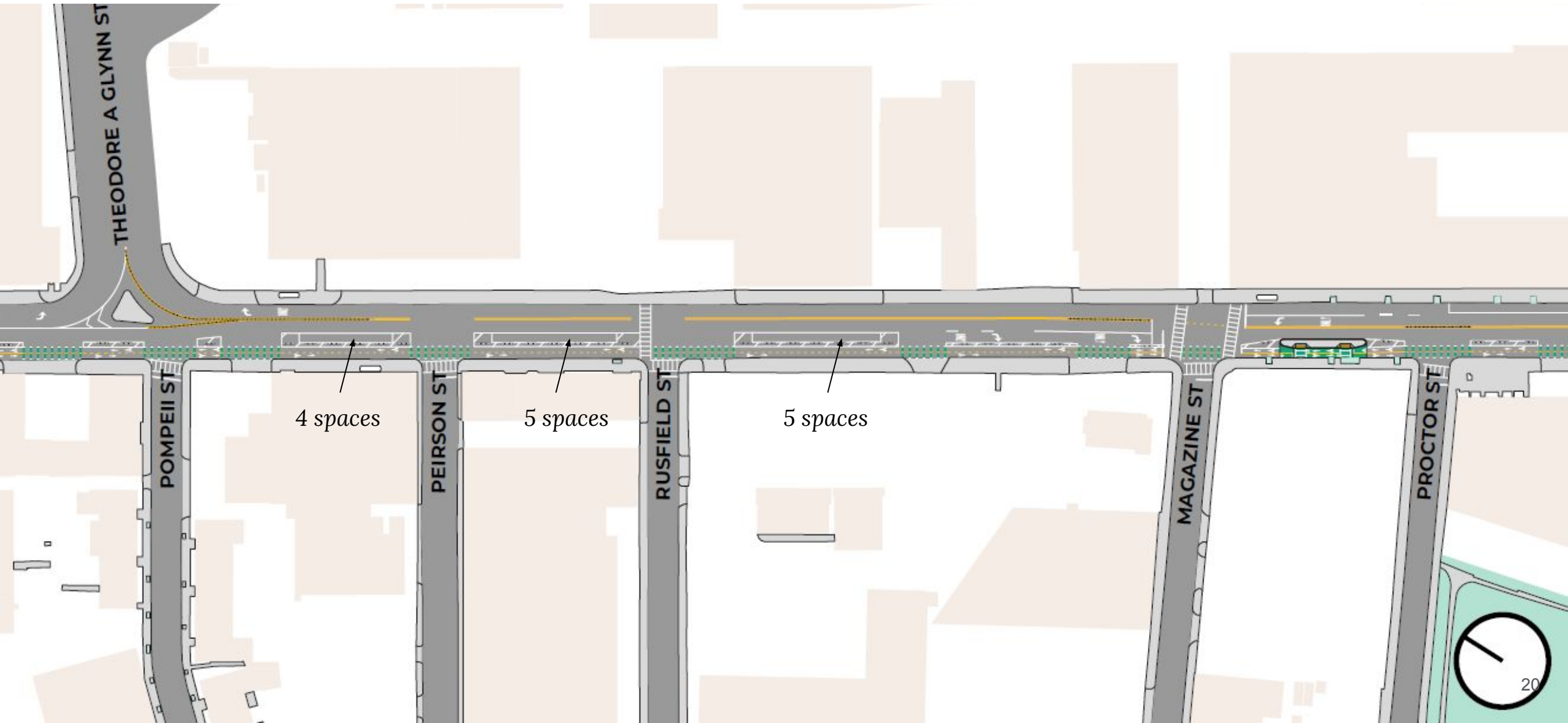
# CROSS SECTION

## North of Island St



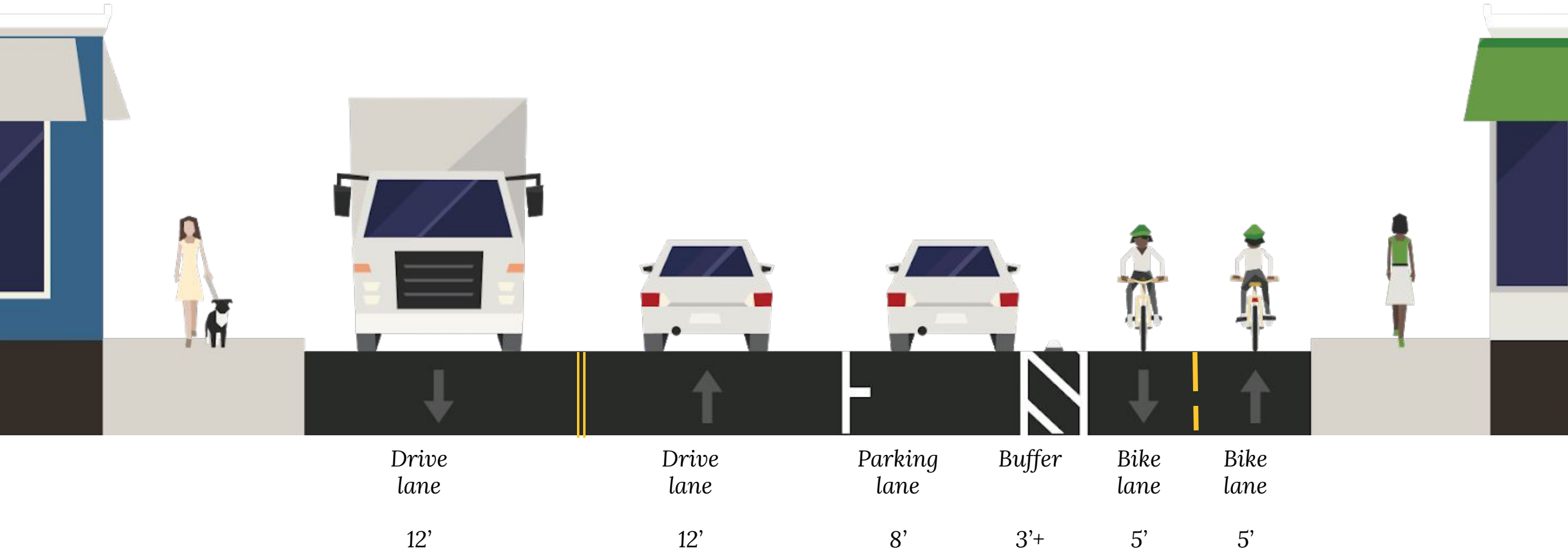
# THEO GLYNN TO PROCTOR

# PLAN VIEW



# CROSS SECTION

## *Between Pierson St and Rusfield St*



# WORK IN PROGRESS

## CONCEPT DESIGN

- ▶ Test design alternatives
- ▶ Feedback from stakeholders, users on direction
- ▶ Accurate traffic model using existing user volumes

## 25% DESIGN

- ▶ Set the basics of the proposed design, swept-path analysis to confirm
- ▶ Preliminary traffic signal phasing and timing
- ▶ First draft of curb ramps



## 75% DESIGN

- ▶ Fully detailed and revised traffic signal phasing and timing
- ▶ Detailed plans for curb ramps and drainage
- ▶ Adjustments to any lane dimensions, pavement markings, signs
- ▶ Assign parking regulations

## PIC

- ▶ Official sign-off on all constructed elements from the Public Improvement Commission

## 100% DESIGN

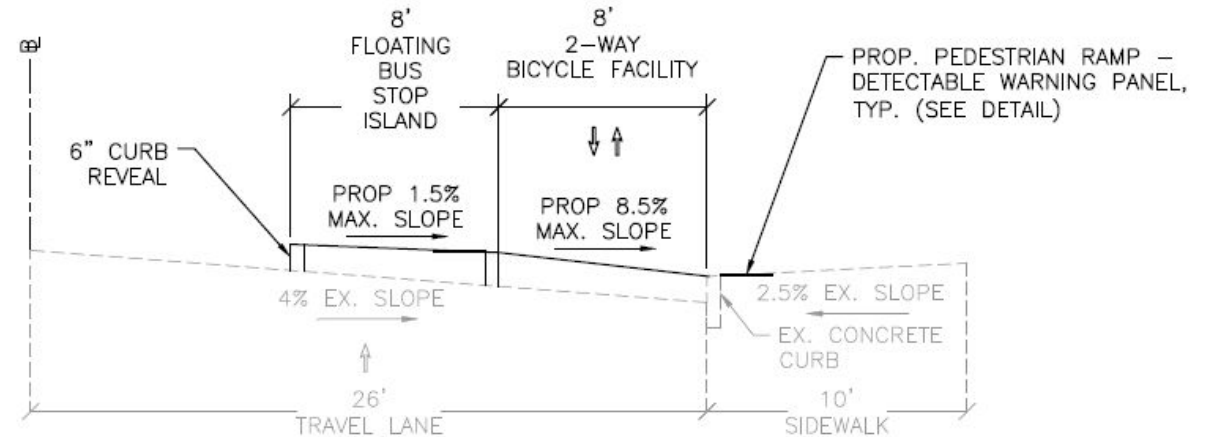
- ▶ Continued refinements to traffic signal phasing and timing; curb ramps; and drainage
- ▶ Last tweaks to all other elements
- ▶ Final draft of temporary traffic management plans

## FINAL DESIGN

- ▶ All issues noted in thorough design review have been approved
- ▶ Signed by City Engineer
- ▶ Delivered to contractor to begin work

# WORK IN PROGRESS

- ▶ Refine traffic signals
  - Allstate
  - Newmarket/Shirley
  - Magazine
- ▶ Engineering the bus stops, curb ramps, drainage



CONCEPT 1 – FLOATING BUS STOP ISLAND  
CROSS SECTION, VIEW SOUTHBOUND