

# BEACON ST & PARK ST

*Sidewalk Improvements – Landmarks Commission*



April 27, 2021

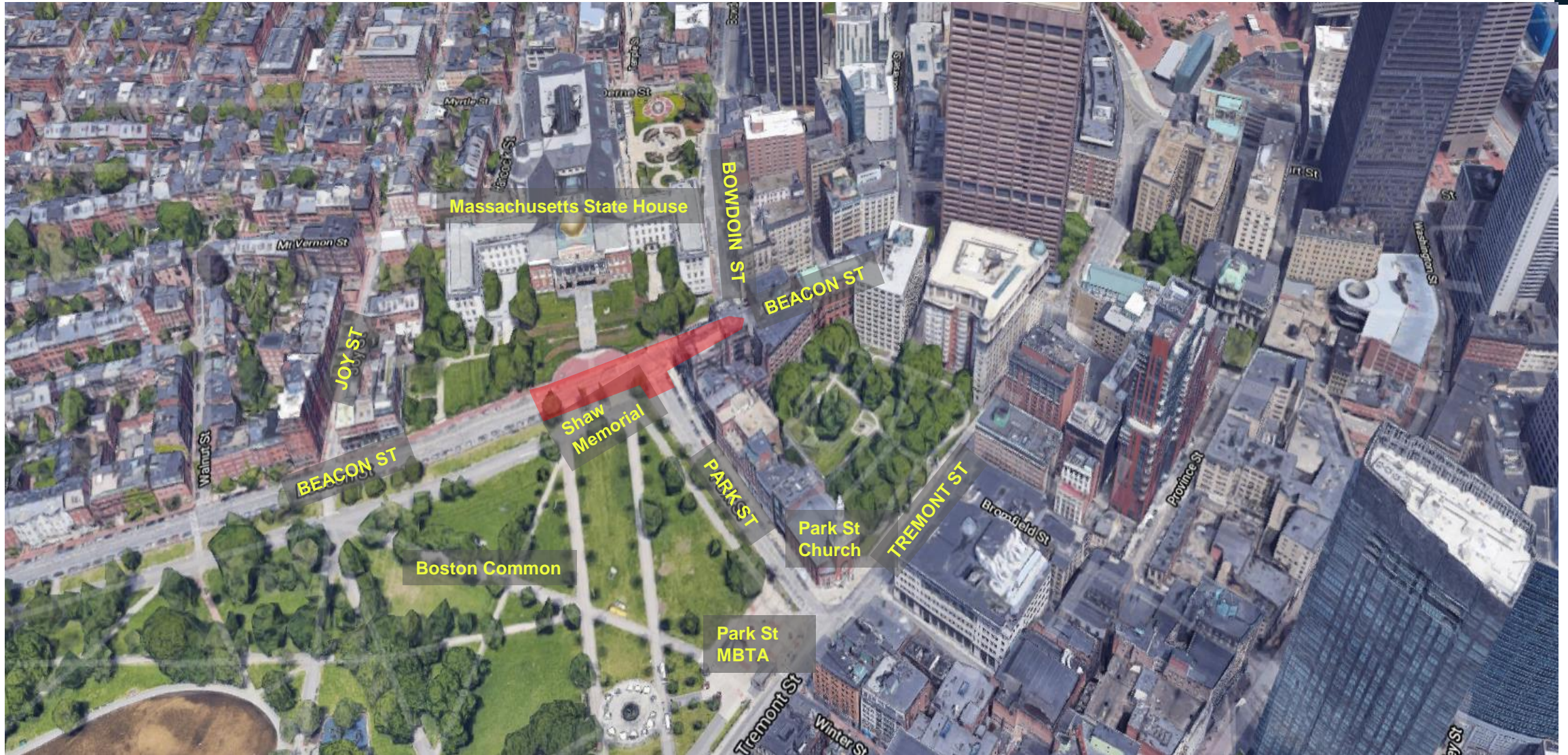
Boston Public Works Department

*Mayor Kim Janey*



# Beacon St & Park St

## Project Location





# Beacon St & Park St

## Existing Conditions

- ❑ *Narrow Sidewalks*
- ❑ *High Pedestrian Volumes*
- ❑ *On Freedom Trail/Tourist Destination (Boston Common, Shaw Memorial, State House)*





# Beacon St & Park St

## Proposed Sidewalk Widening



- ❑ *Wider Sidewalks*
- ❑ *Better Waiting Area on the Common Side*
- ❑ *Shorter Crosswalks*





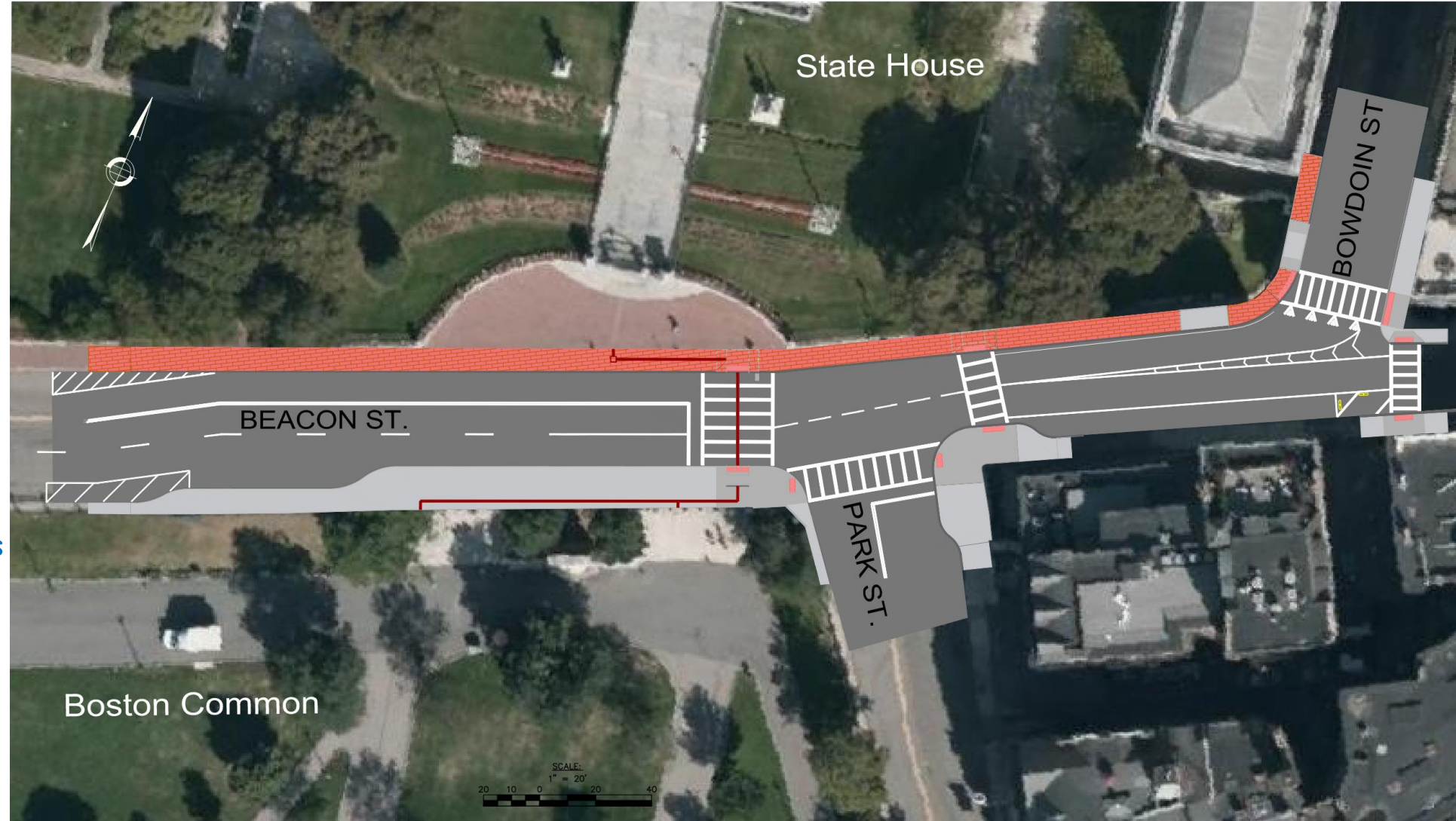
# Beacon St & Park St

## Proposed Layout



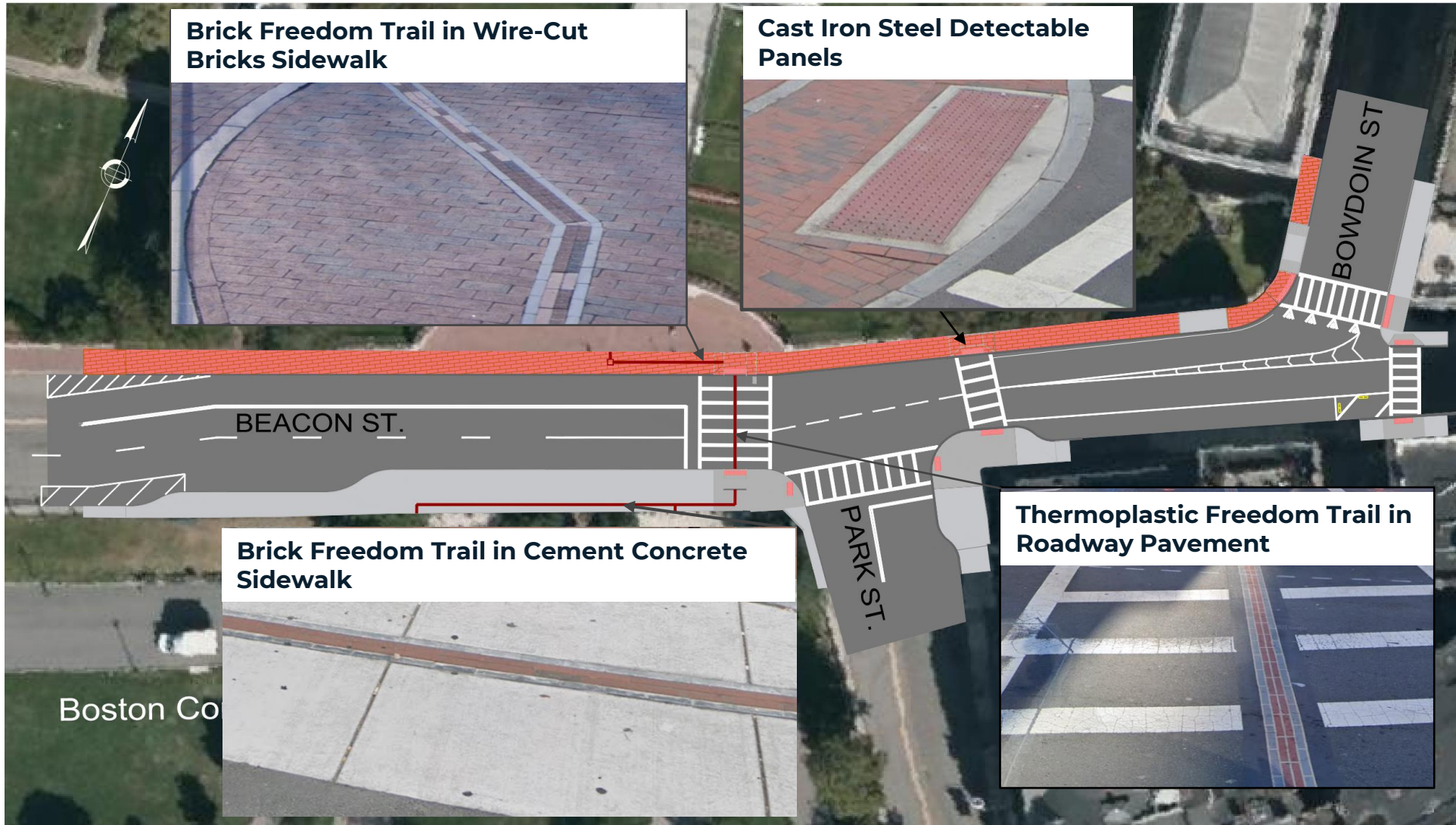
### □ Improve Access and Safety

- Wider Crosswalk to the State house
- Raised Crosswalk at Bowdoin St
- Wider Sidewalks for Pedestrians
- Lane Configuration- Limits Vehicle Crossover and Conflicts
- Access Compliance- American With Disability Act (ADA) and Massachusetts Access Board (MAAB)



# Beacon St & Park St

## Construction Materials





# Beacon St & Park St

*Proposed Conditions*





# Beacon St & Park St

## Discussion

