



2/22/2020
DSC_5598.JPG

View of 33-41 Farnsworth Street alley elevation where fire shutter pin work is being proposed.

The intent of the restoration would to only remove the fire shutter pins where absolutely necessary due to one of the following conditions:

- *Safety concerns
- *Damage to masonry surrounding the pin due to its deterioration
- *Previous partial removal of the pin



2/22/2020
DSC_5588.JPG

View of 33-41 Farnsworth Street alley elevation where fire shutter pin work is being proposed.



2/22/2020
DSC_5591.JPG

View of 33-41 Farnsworth Street alley elevation where fire shutter pin work is being proposed. Circled areas are an example of locations of fire shutter pin removal prior to our involvement on site.



2/22/2020
DSC_5592.JPG

Close up of previous removals and brick infill at fire shutter pin locations.



2/22/2020
DSC_5599.JPG

Example of conditions on site with partial removal of fire shutter pin that is now causing more masonry damage. This is an example of where we would like to remove the embedded steel and replace with brick and mortar.



2/22/2020
DSC_5611.JPG

This is an example of a fire shutter pin that we would propose leaving in place because it is not damaged and is not causing damage to the surrounding masonry. The joints surrounding this pin would be restored to assist with preserving the masonry.



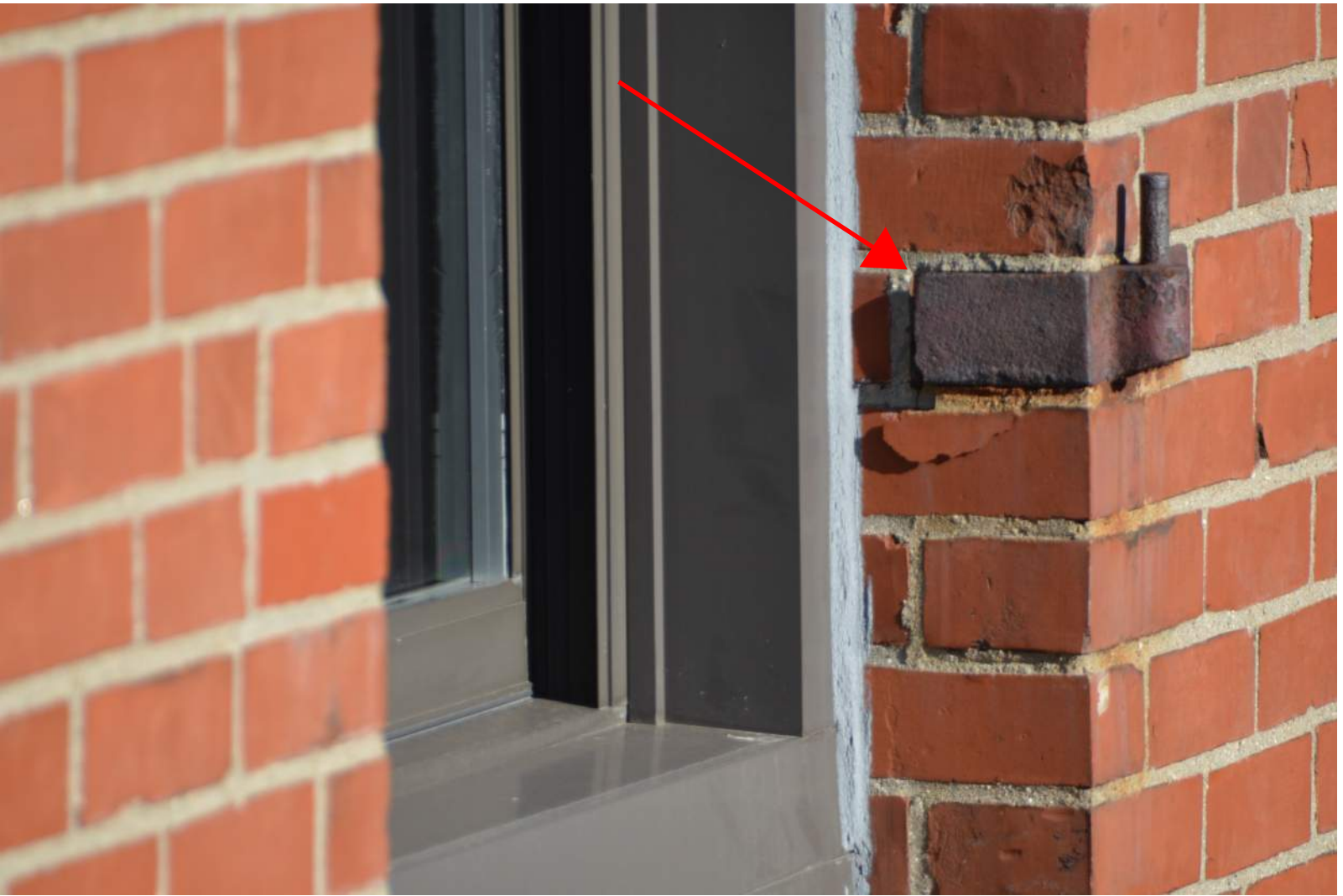
2/22/2020
DSC_5630.JPG

Example of fire shutter pin previously removed with brick infill.
This is what we are proposing to complete at the locations where
the pins are a safety hazard, partially removed, or damaging the
masonry.



2/22/2020
DSC_5633.JPG

Example of fire shutter pin previously removed with brick infill. This is what we are proposing to complete at the locations where the pins are a safety hazard, partially removed, or damaging the masonry.



2/22/2020
DSC_5752.JPG

This is an example of a fire shutter pin we would like to remove due to safety concerns if or when it falls off the building. The fire shutter pin would be removed and replaced with brick and mortar.



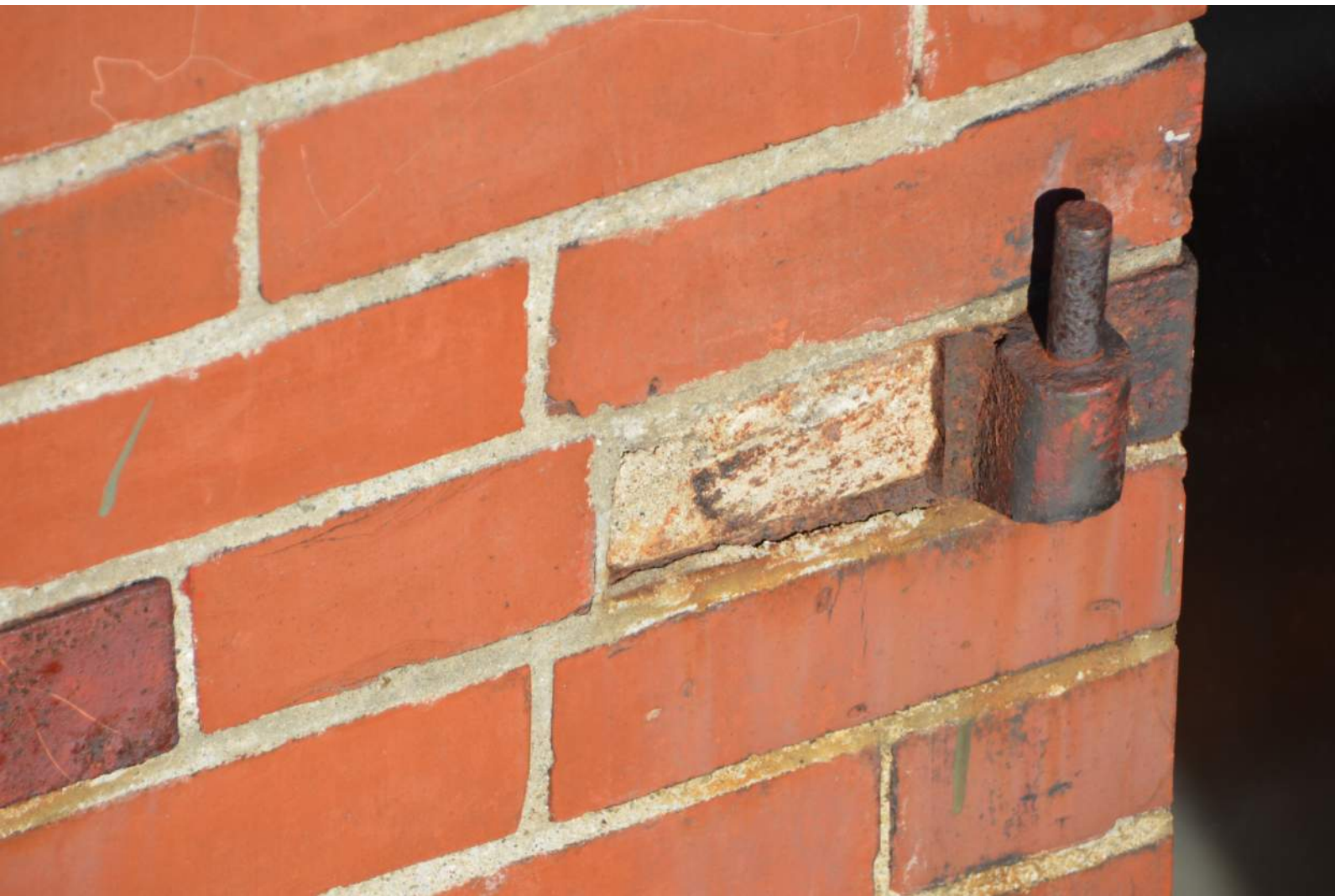
2/22/2020
DSC_5792.JPG

This is an example of a fire shutter pin we would like to remove due to safety concerns if or when it falls off the building. The fire shutter pin would be removed and replaced with brick and mortar.



2/22/2020
DSC_5755.JPG

Example of location where the face of the fire shutter pin had fallen off the building prior to our review in 2020 and what we would like to prevent from happening in the future.



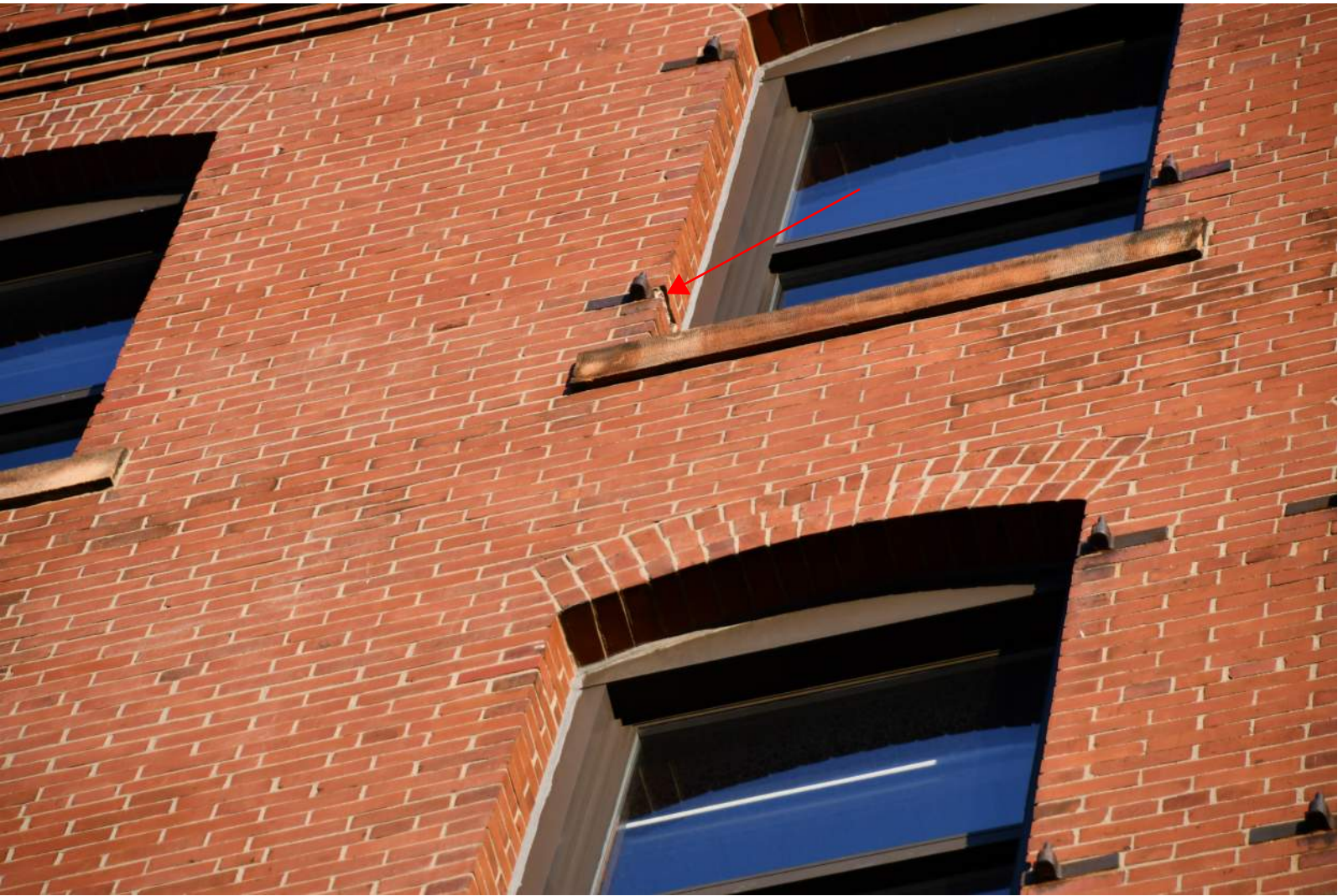
2/22/2020
DSC_5756.JPG

Close up photograph of previous page.



2/22/2020
DSC_5764.JPG

Example of masonry damage due to deteriorating fire shutter pin.



8/5/2020
DSC_6776.JPG

Example of fire shutter pin with the return missing at masonry opening.
We are proposing to remove this and infill with brick and mortar.
Note the window below has had the pins removed on the left side
previously and replaced with brick and mortar.



8/5/2020
DSC_6782.JPG

Example of a location with the face of the fire shutter pin removed but remaining steel is still embedded in masonry. We are proposing to remove the embedded steel that is causing masonry damage and replacing with brick and mortar at these locations.