

**GENERAL RESTORATION NOTE**

1. INSTALL HISTORICALLY APPROPRIATE REMOVABLE STORM WINDOWS (MARVIN WOOD STORM SCREENS AND ALLIED ALUMINUM STORM WINDOWS) TO IMPROVE THERMAL PERFORMANCE OF WINDOWS AND EXTEND THE SERVICE LIFE OF WINDOW GLAZING AND PAINT.



PRESIDENTS PLACE, 1250 HANCOCK STREET, SUITE 615H  
QUINCY, MA 02169 TEL. 617-773-8150 FAX 617-773-4902  
www.wesslingarchitects.com

CONSULTANTS:

PROJECT:

**CURLEY HOUSE  
EXTERIOR  
RESTORATION**

350 JAMAICAWAY  
JAMAICA PLAIN, MA

CLIENT:

**CITY OF  
BOSTON**

1 CITY HALL SQUARE  
BOSTON, MA

**NOT FOR  
CONSTRUCTION**

PROFESSIONAL

**PREPARED BY A LICENSED ARCHITECT**

Any changes to this item can be a violation of the law unless altered by a licensed architect. Any alteration made to this item must be accompanied by a specific description of change or changes made; date change was made, as well as the seal of the licensed architect who made or oversaw the changes.

MARK	DATE	DESCRIPTION
	04-27-21	BLC SUBMISSION
ISSUE:		

PROJECT NO.:	20130
DRAWN BY:	LAW
CHECKED BY:	SAW
DRAWING SCALE:	AS NOTED

SHEET TITLE:

**ELEVATIONS**

SHEET:

**A-201**

DO NOT SCALE DRAWING



**2 EAST ELEVATION - PROPOSED**

1/4"=1'-0"



**1 WEST ELEVATION (JAMAICAWAY) - PROPOSED**

1/4"=1'-0"

**GENERAL RESTORATION NOTE**

1. INSTALL HISTORICALLY APPROPRIATE REMOVABLE STORM WINDOWS (MARVIN WOOD STORM SCREENS AND ALLIED ALUMINUM STORM WINDOWS) TO IMPROVE THERMAL PERFORMANCE OF WINDOWS AND EXTEND THE SERVICE LIFE OF WINDOW GLAZING AND PAINT.

**WESSLING ARCHITECTS**  
AIA-CSI-BOCA

PRESIDENTS PLACE, 1250 HANCOCK STREET, SUITE 615H  
QUINCY, MA 02169 TEL. 617-773-8150 FAX 617-773-4902  
www.wesslingarchitects.com

CONSULTANTS:

PROJECT:  
**CURLEY HOUSE EXTERIOR RESTORATION**  
350 JAMAICAWAY  
JAMAICA PLAIN, MA

CLIENT:  
**CITY OF BOSTON**  
1 CITY HALL SQUARE  
BOSTON, MA

**NOT FOR CONSTRUCTION**

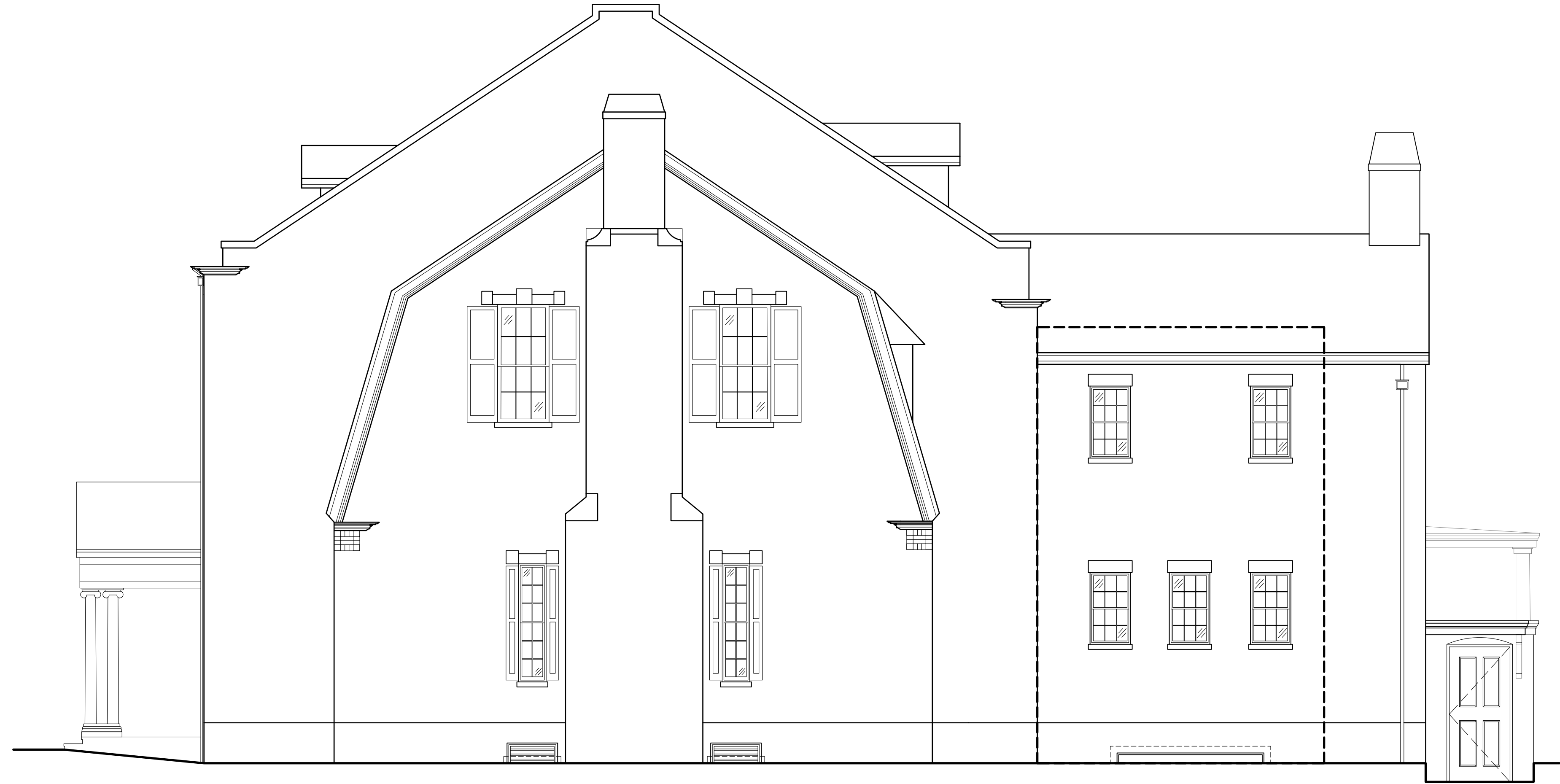
PREPARED BY A LICENSED ARCHITECT  
Any changes to this item can be a violation of the law unless altered by a licensed architect. Any alteration made to this item must be accompanied by a specific description of change or changes made; date change was made, as well as the seal of the licensed architect who made or oversaw the changes.

MARK	DATE	DESCRIPTION
	04-27-21	BLC SUBMISSION
ISSUE:		

PROJECT NO.:	20130
DRAWN BY:	LAW
CHECKED BY:	SAW
DRAWING SCALE:	AS NOTED

SHEET TITLE:  
**ELEVATIONS**

SHEET:  
**A-202**  
DO NOT SCALE DRAWING



**2 SOUTH ELEVATION - PROPOSED**  
1/4"=1'-0"



**1 NORTH ELEVATION (MORaine STREET) - PROPOSED**  
1/4"=1'-0"

D:\Projects\2013\20130130\_Curley House Exterior Restoration\05-Construction Documents\Architectural\Curley House Exterior Restoration\SheetA-202.dwg  
 APR 27, 2021 5:28am  
 WESSLING ARCHITECTS  
 WESSLING ARCHITECTS

COPYRIGHT © STEPHEN J. WESSLING ARCHITECTS INC. 2021



EAST AND SOUTH ELEVATIONS



EAST ELEVATION



NORTH ELEVATION



WEST ELEVATION



PRESIDENTS PLACE, 1250 HANCOCK STREET, SUITE 615H  
QUINCY, MA 02169 TEL. 617-773-8150 FAX 617-773-4902  
www.wesslingarchitects.com

CONSULTANTS:

PROJECT:  
**CURLEY HOUSE  
EXTERIOR  
RESTORATION**

350 JAMAICAWAY  
JAMAICA PLAIN, MA

CLIENT:

**CITY OF  
BOSTON**

1 CITY HALL SQUARE  
BOSTON, MA

**NOT FOR  
CONSTRUCTION**

PROFESSIONAL

PREPARED BY A LICENSED ARCHITECT  
Any changes to this item can be a violation of the law unless altered by a licensed architect. Any alteration made to this item must be accompanied by a specific description of change or changes made; date change was made, as well as the seal of the licensed architect who made or oversaw the changes.

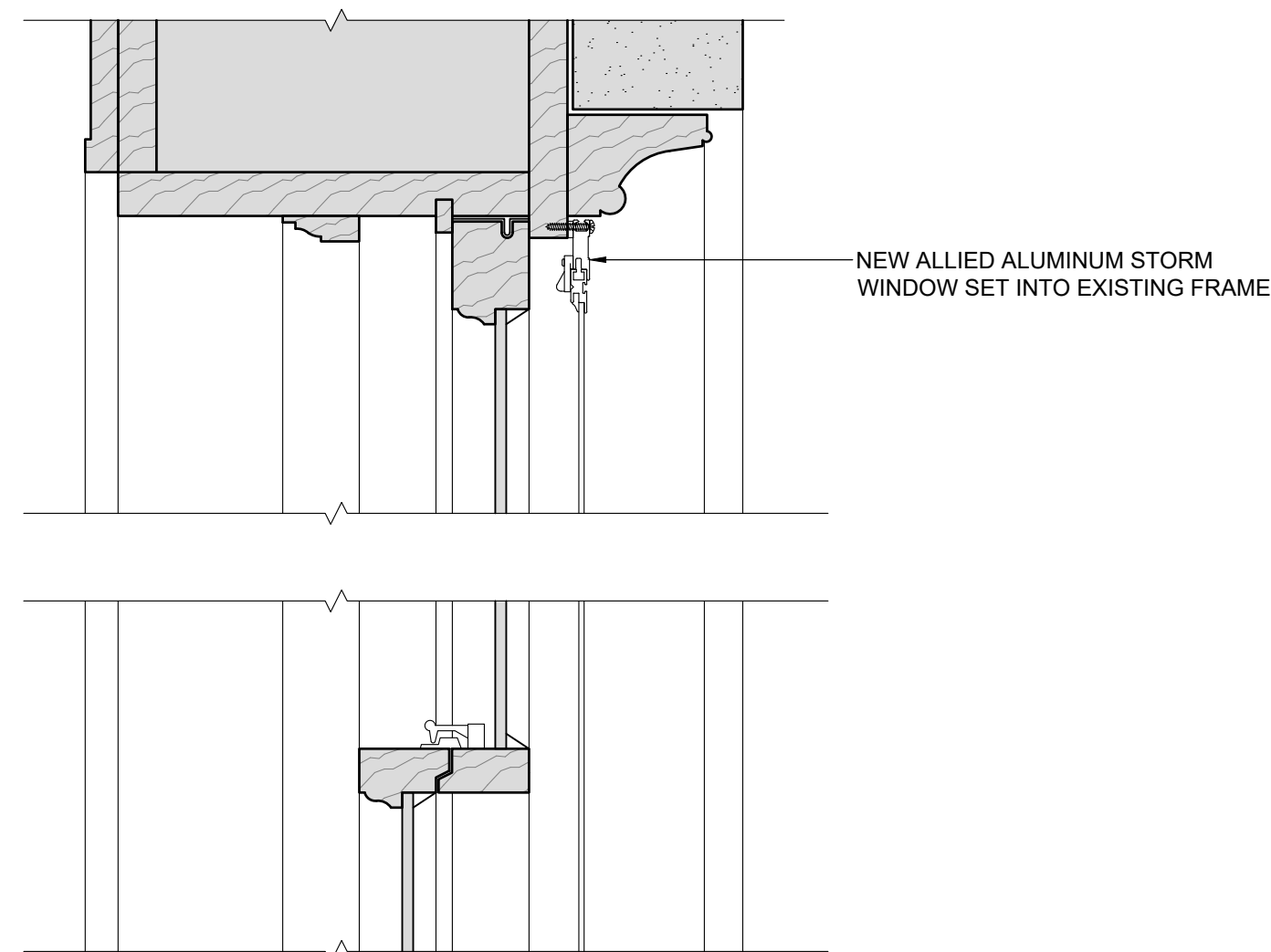
MARK	DATE	DESCRIPTION
	04-27-21	BLC SUBMISSION
ISSUE:		

PROJECT NO.: 20130  
DRAWN BY: LAW  
CHECKED BY: SAW  
DRAWING SCALE: AS NOTED

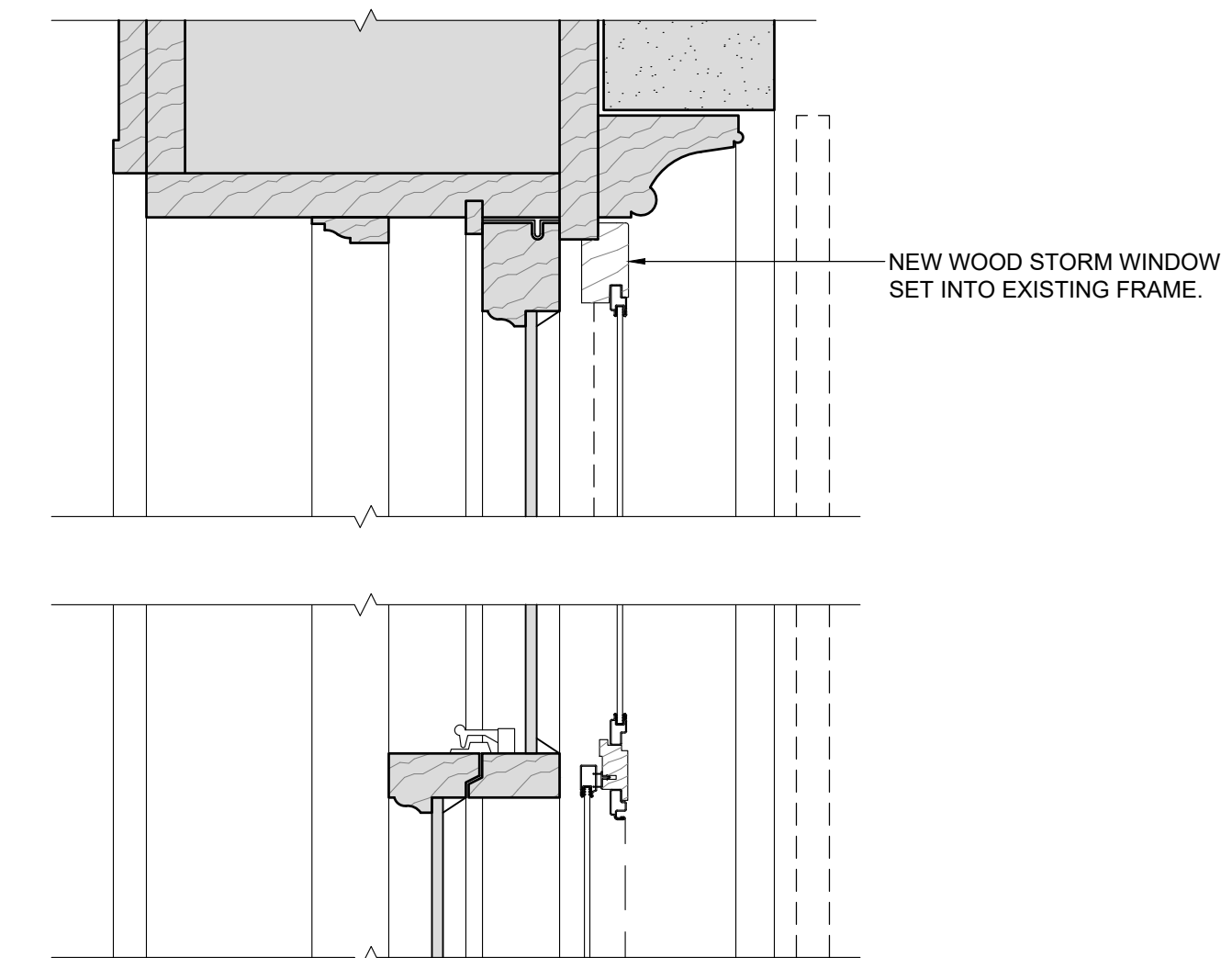
SHEET TITLE:  
**DETAILS AND  
PHOTOGRAPHS**

SHEET:  
**A-501**

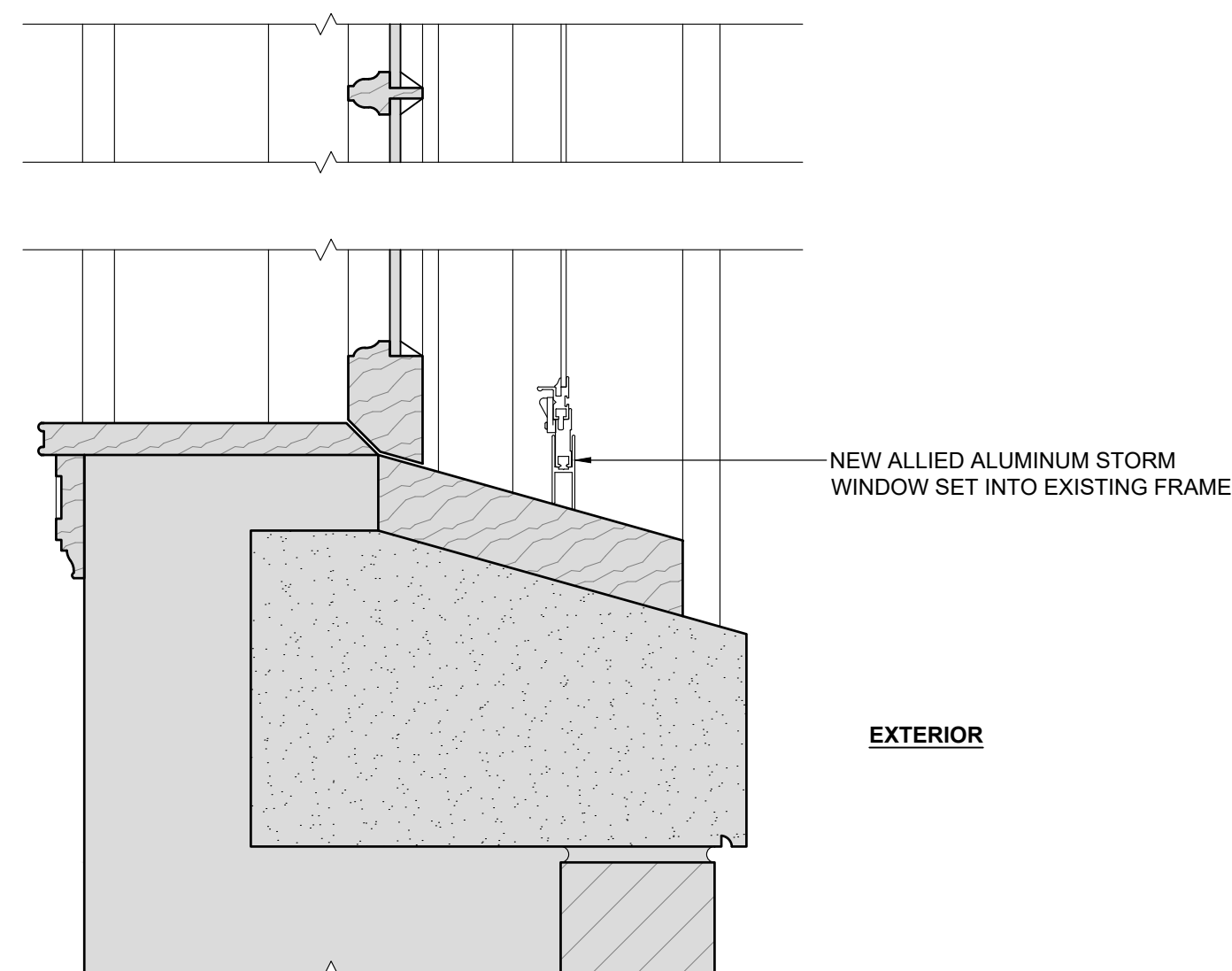
DO NOT SCALE DRAWING



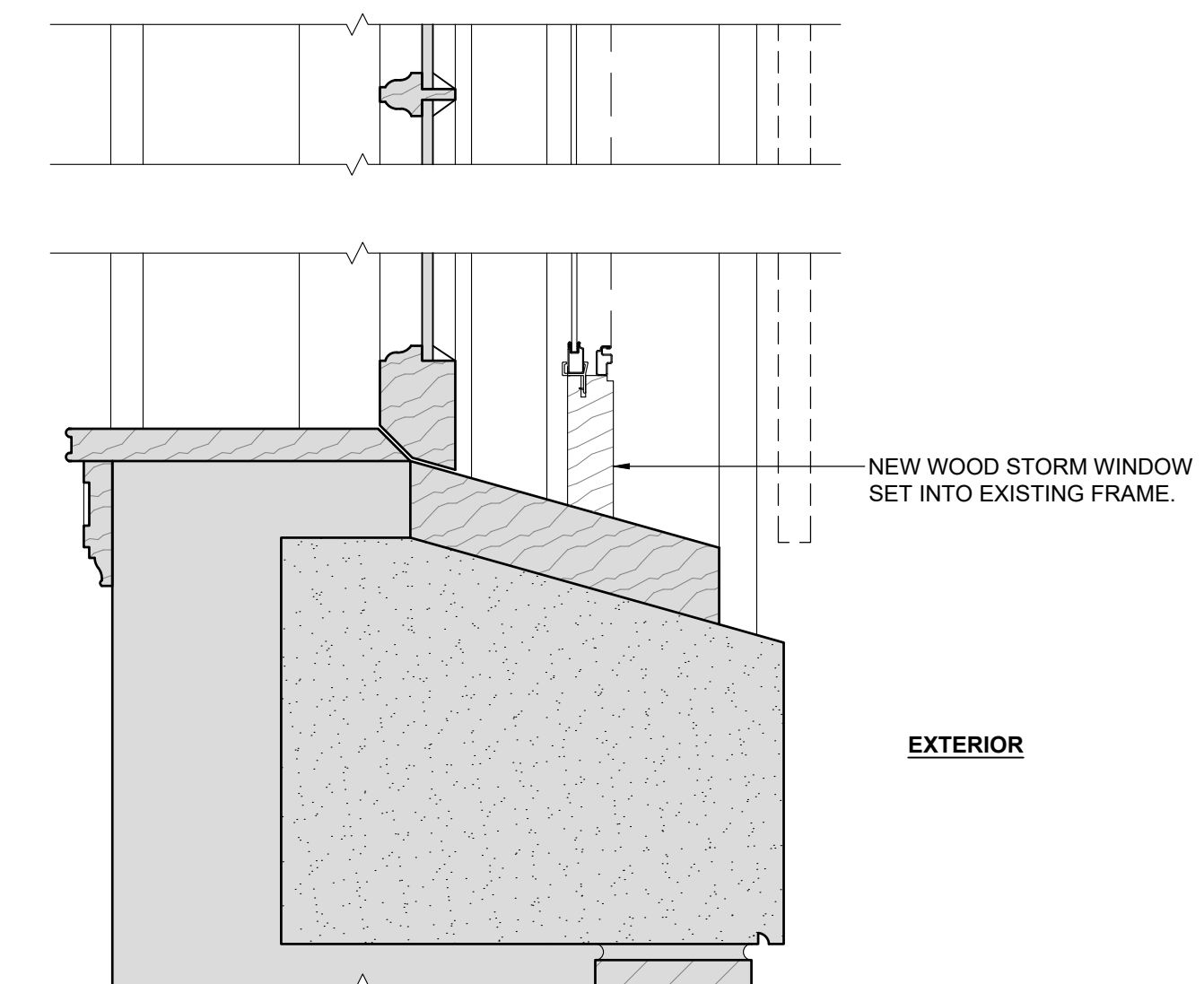
4 EXISTING WINDOW MEETING RAIL AND HEAD DETAIL (JAMB SIMILAR)  
3"=1'-0"



2 EXISTING WINDOW MEETING RAIL AND HEAD DETAIL (JAMB SIMILAR)  
3"=1'-0"



3 EXISTING WINDOW SILL DETAIL - NEW ALLIED ALUMINUM STORM WINDOW  
3"=1'-0"



1 EXISTING WINDOW SILL DETAIL - NEW WOOD STORM WINDOW  
3"=1'-0"