



RINGER PARK COMPREHENSIVE PLAN

Community Meeting #3



How to use Zoom Webinar

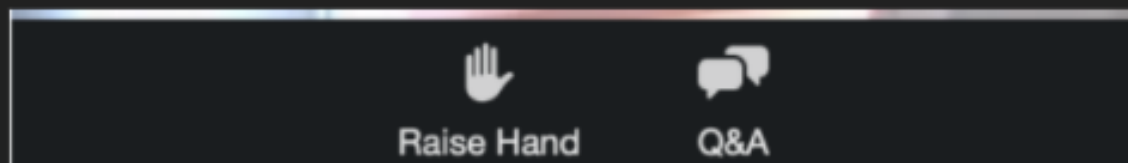
Please note during this presentation, attendees can see the presenters but we can't see you. Here is how you can participate during the question and answer part of the presentation.

Joining via Phone? (dial)

*9 to raise hand

*6 to unmute/mute

Joining via web (i.e computer, tablet, etc?)

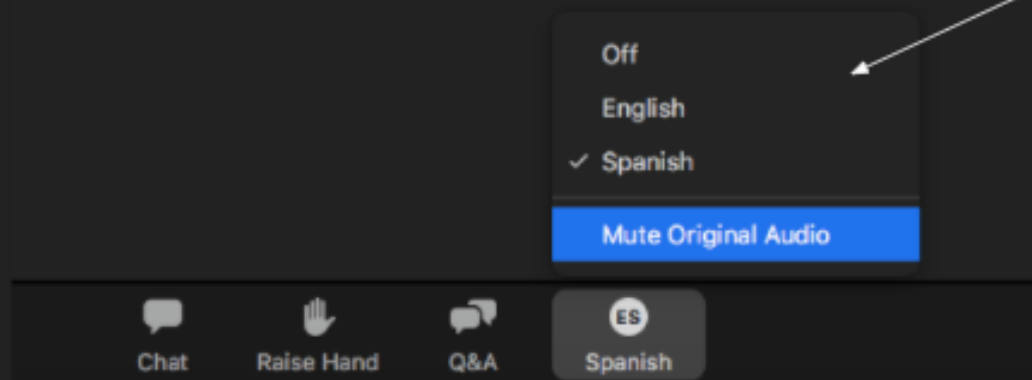


Use to raise your hand during Q&A

Click here to enter your questions throughout presentation

How to access Interpretation

Select the language
(may be different
than your actual
language)



Click interpretation button on
the bottom of screen to
access drop down menu

AGENDA

1

INTRO (PROJECT TEAM, TIMELINE, GOALS)

2

REVIEW OF RECOMMENDATIONS

3

DISCUSSION

4

NEXT STEPS

PROJECT TEAM

Cathy Baker-Eclipse

Project Manager

cathy.baker-eclipse@boston.gov or 617-961-3058

Christine Brandao

Outreach Coordinator, External Affairs

christine.brandao@boston.gov or 617-961-3006

Kyle Zick

Principal, Kyle Zick Landscape Architecture, Inc.

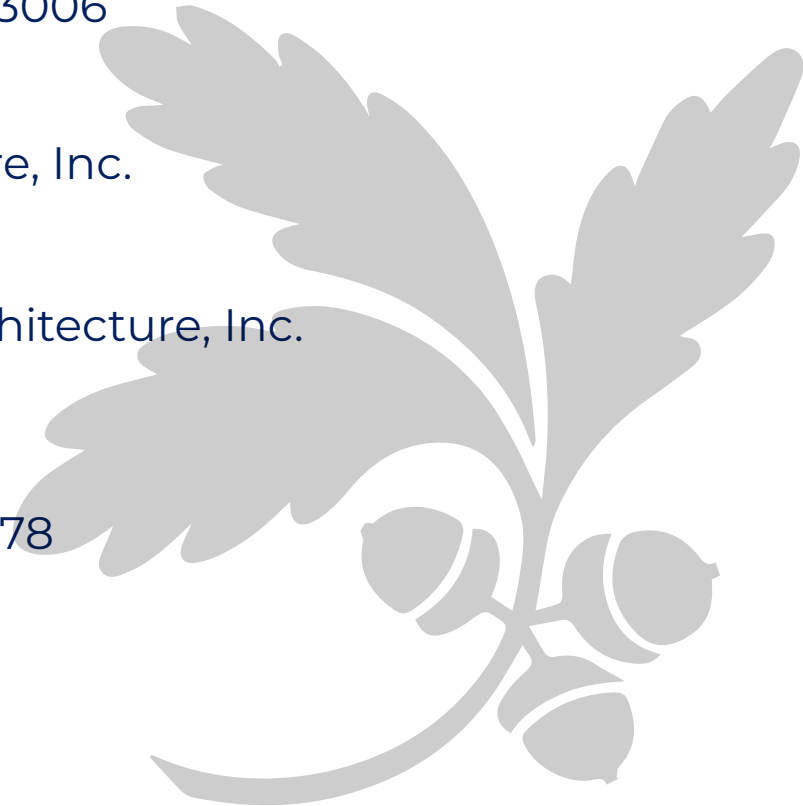
Danielle D. Desilets

Senior Associate, Kyle Zick Landscape Architecture, Inc.

Conor Newman

Office of Neighborhood Services

conor.newman@boston.gov or 617-635-2678





CITY OF BOSTON PRIORITIES

- **Expanding walkable access to parks**
- **Addressing equity**
- **Climate resilience**
- **Health**
- **Community building**

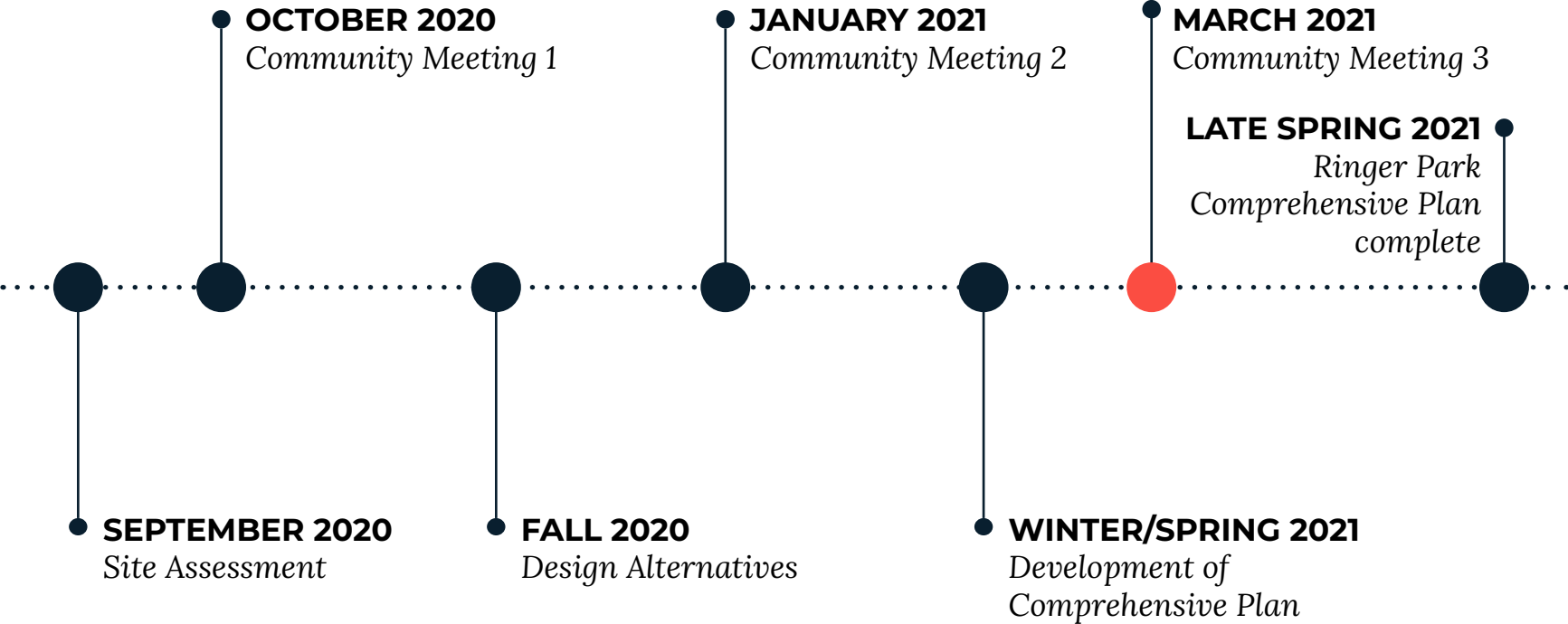


PARK & RECREATION GOALS

- **Accessible and available to all**
- **Diverse, balanced, and efficient mix of uses**
- **Meaningful and inclusive community engagement**
- **Adaptive and resilient landscapes**
- **Promote connections**



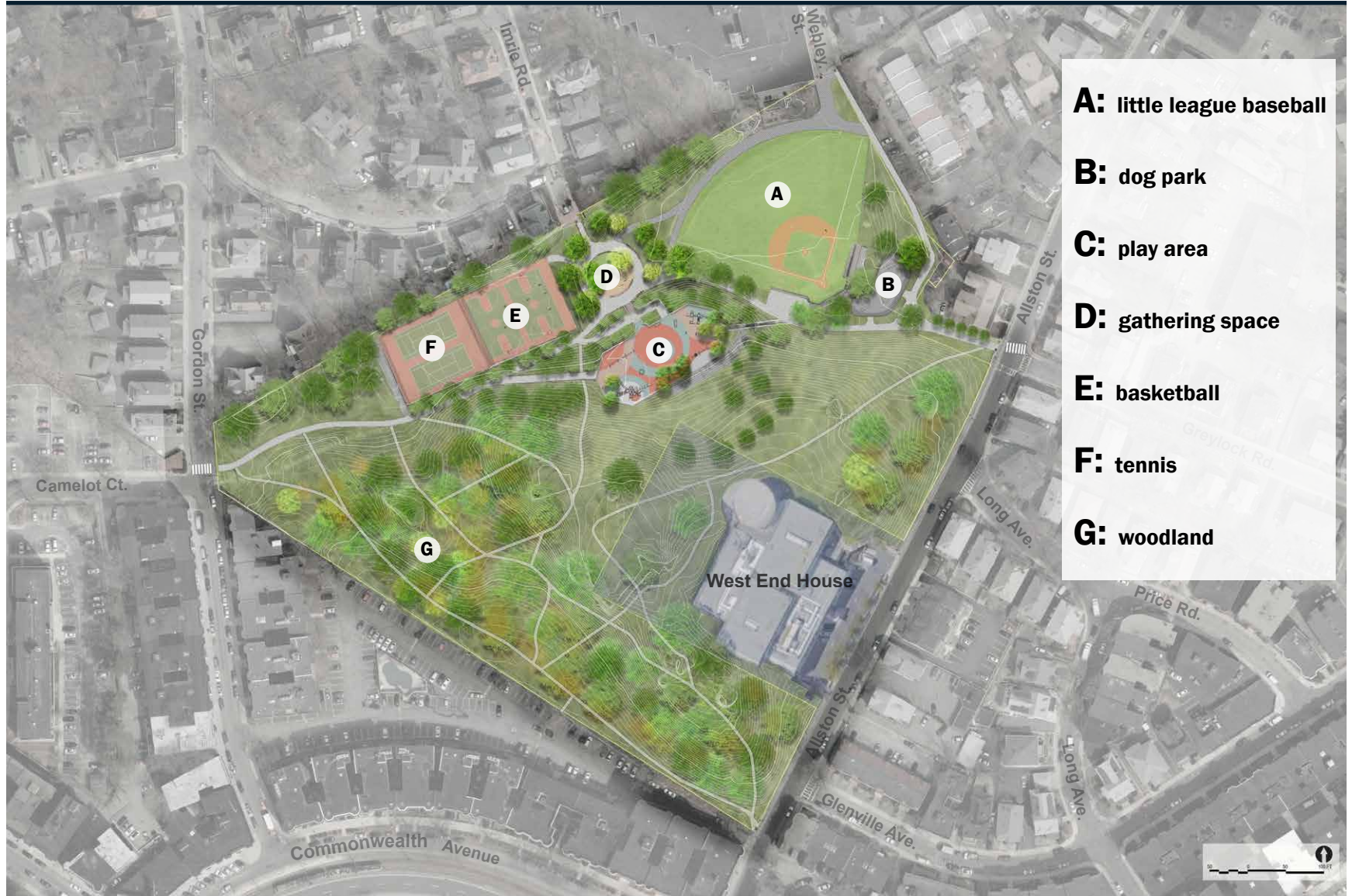
PROJECT TIMELINE



GUIDING PRINCIPLES

- 
- An aerial photograph of a campus or park area. In the center, there is a large green field with a baseball diamond. To the right of the field is a basketball court with red and green markings. Further right, there are several large, multi-story buildings with grey roofs. The area is surrounded by dense green trees. The text is overlaid on the left side of the image.
- **REVIEW DESIGN IDEAS THAT ILLUSTRATE COMMUNITY COMMENTS**
 - **GUIDING PRINCIPLES FOR THIS COMPREHENSIVE PLAN**
 - 1. ACCESSIBILITY IMPROVEMENTS**
 - 2. ADDRESS SAFETY CONCERNS**
 - 3. EASE OF MAINTENANCE**
 - 4. PLACEMAKING**

Proposed Site Plan

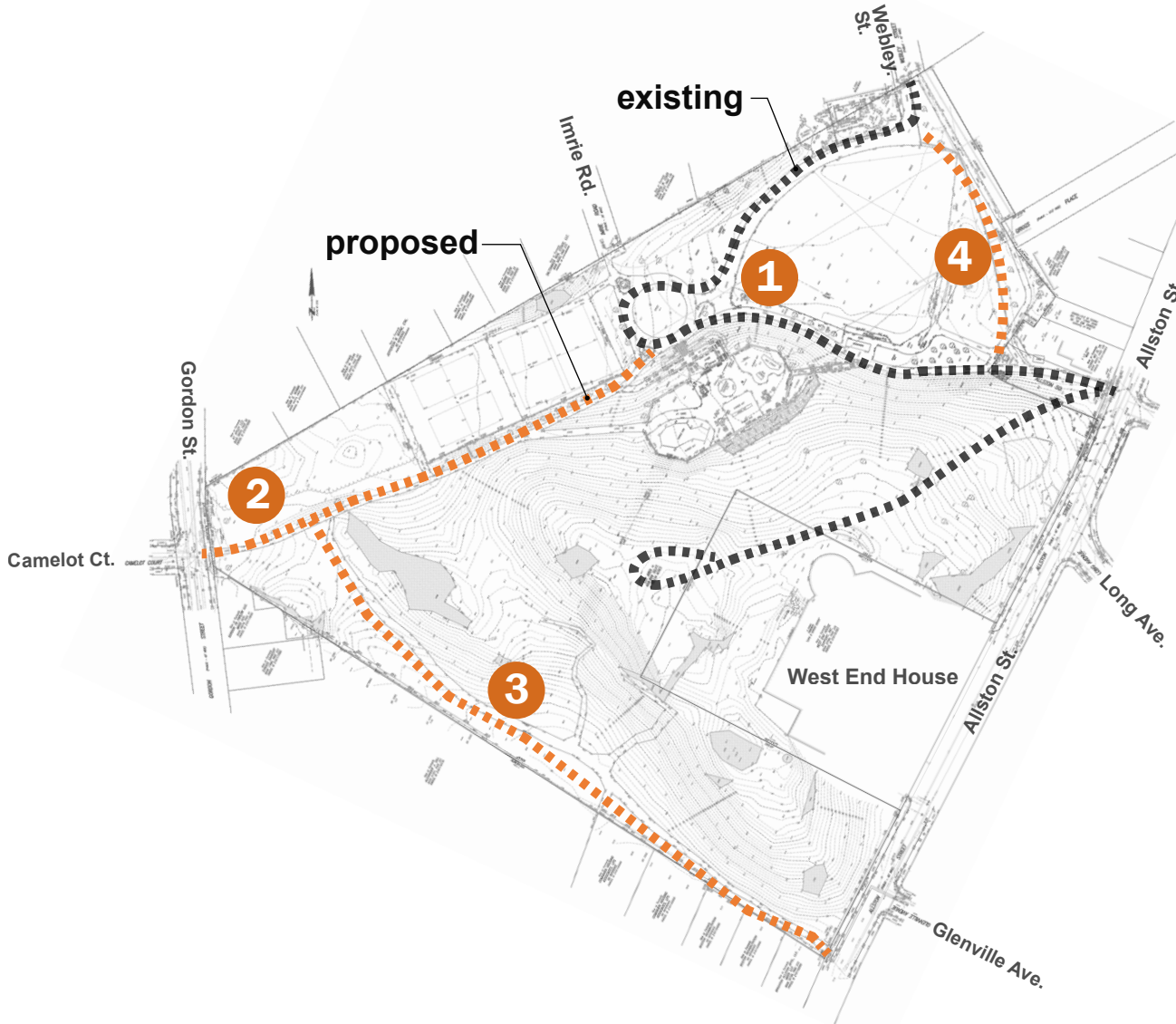


PATHWAY IMPROVEMENTS



- 1:** realign path to make it accessible
- 2:** widen path for maintenance access
- 3:** regrade path to make it accessible
- 4:** pave path to make it accessible and ease maintenance
- 5:** capture stormwater coming off hill to minimize icing conditions
- 6:** replace primary path with hardened path to make it accessible
- 7:** remove cobblestones from entries

IMPROVE MAINTENANCE ACCESS



1: existing route accessed from Webley

2: consider additional entry off Gordon

3: make connection for urban wild

4: adjust geometry and widen

VEGETATION MANAGEMENT



WOODLAND



Erosion: add waterbars to direct stormwater; close steepest trails

Safety & Security: consider adding security camera(s)

Litter: improve maintenance access to facilitate cleanup

Woodland Management: Hazard tree removal, pruning, invasive vegetation management, vegetation protection

WOODLAND: Path improvements



1: extend trails to meet new path alignment

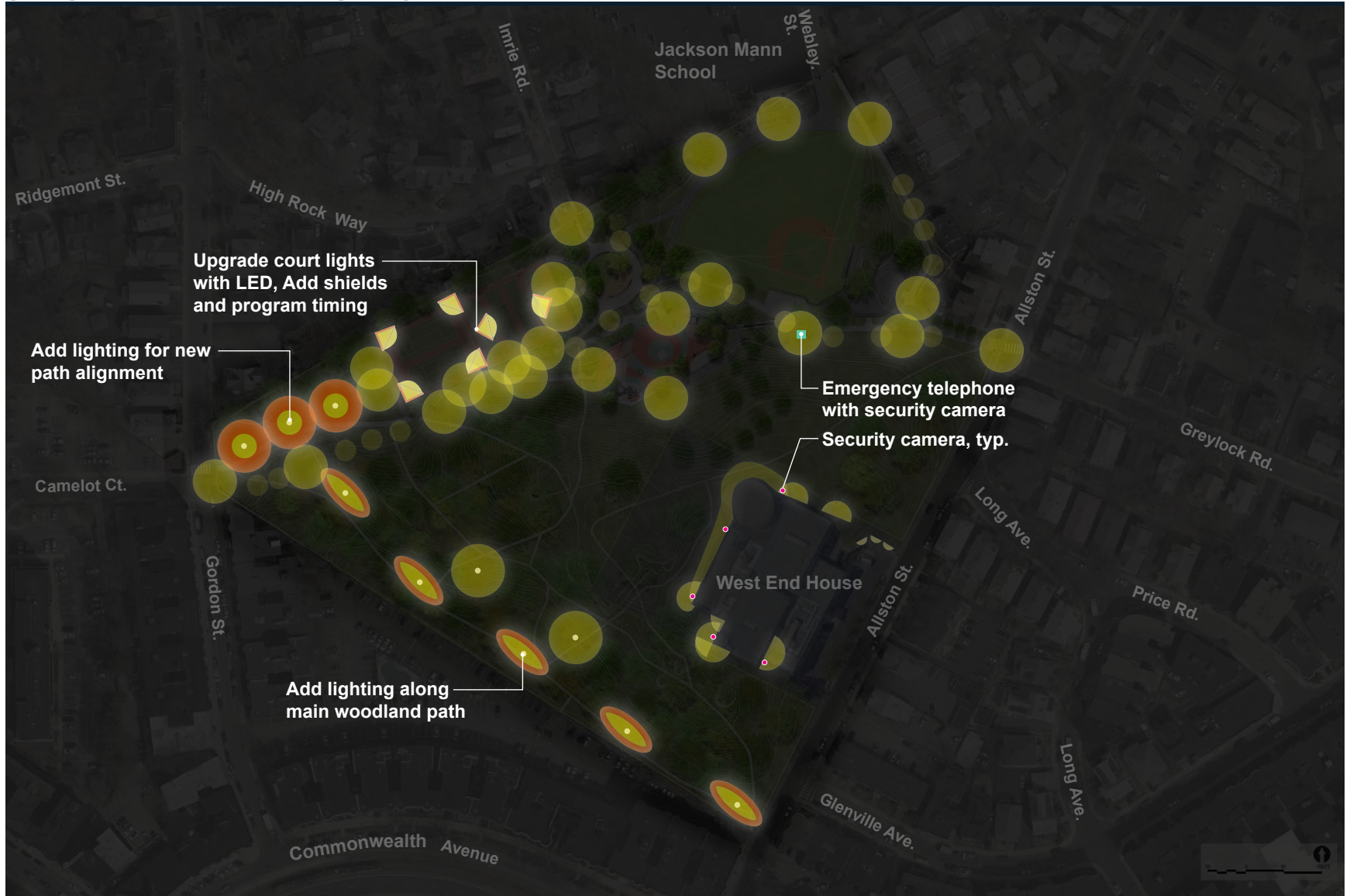
2: trails too steep and eroding: close and revegetate. Collect and infiltrate stormwater flowing from hill before crossing trail

3: hardened trail

4: add stone or wood water bars to limit erosion

ADDRESS SAFETY CONCERNS: Lighting

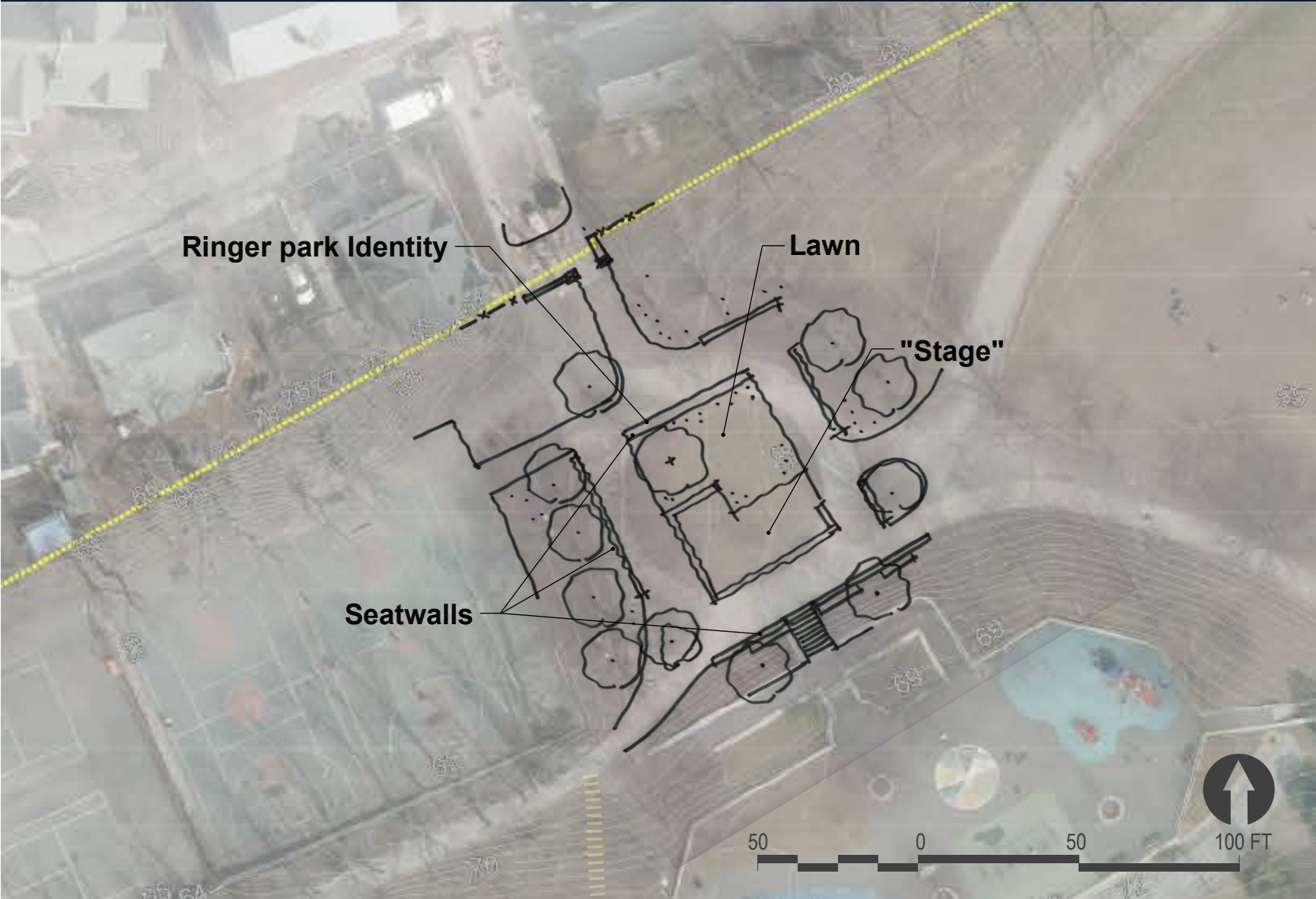
(Proposed conditions plan)



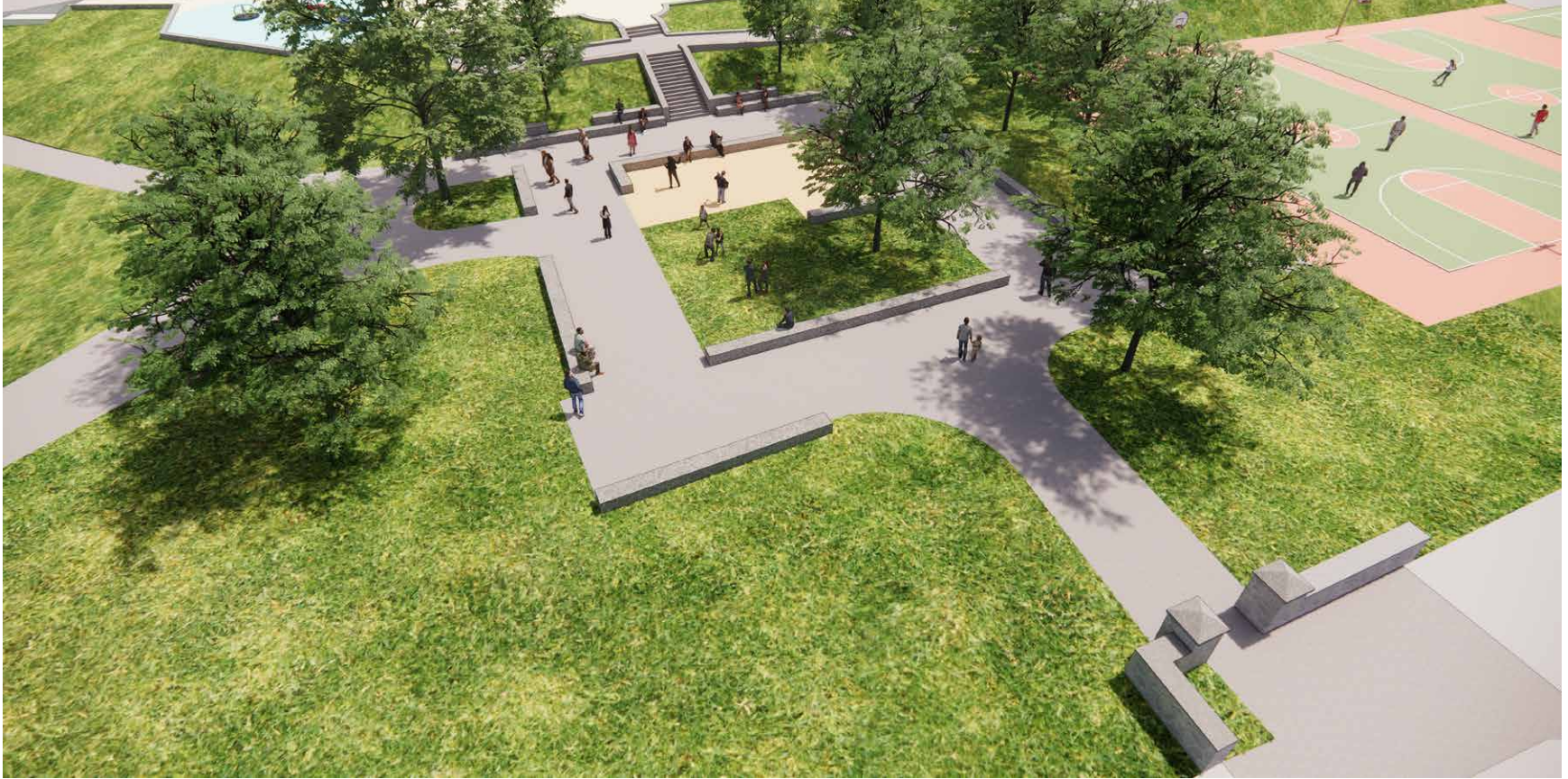
IMPROVE GATHERING SPACES



IMPROVE GATHERING SPACES



IMPROVE GATHERING SPACES



IMPROVE GATHERING SPACES



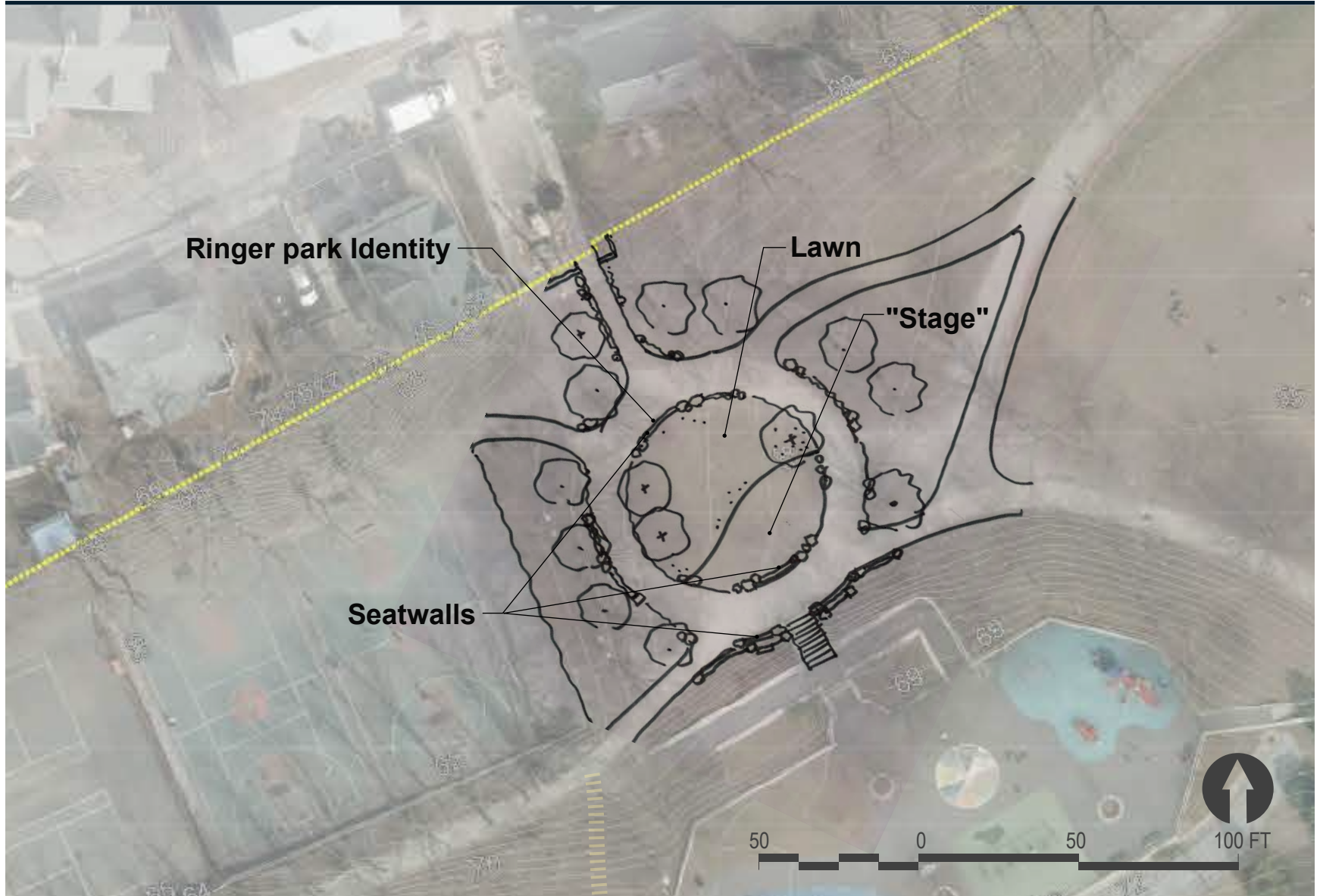
IMPROVE GATHERING SPACES



IMPROVE GATHERING SPACES



IMPROVE GATHERING SPACES



IMPROVE GATHERING SPACES



IMPROVE GATHERING SPACES



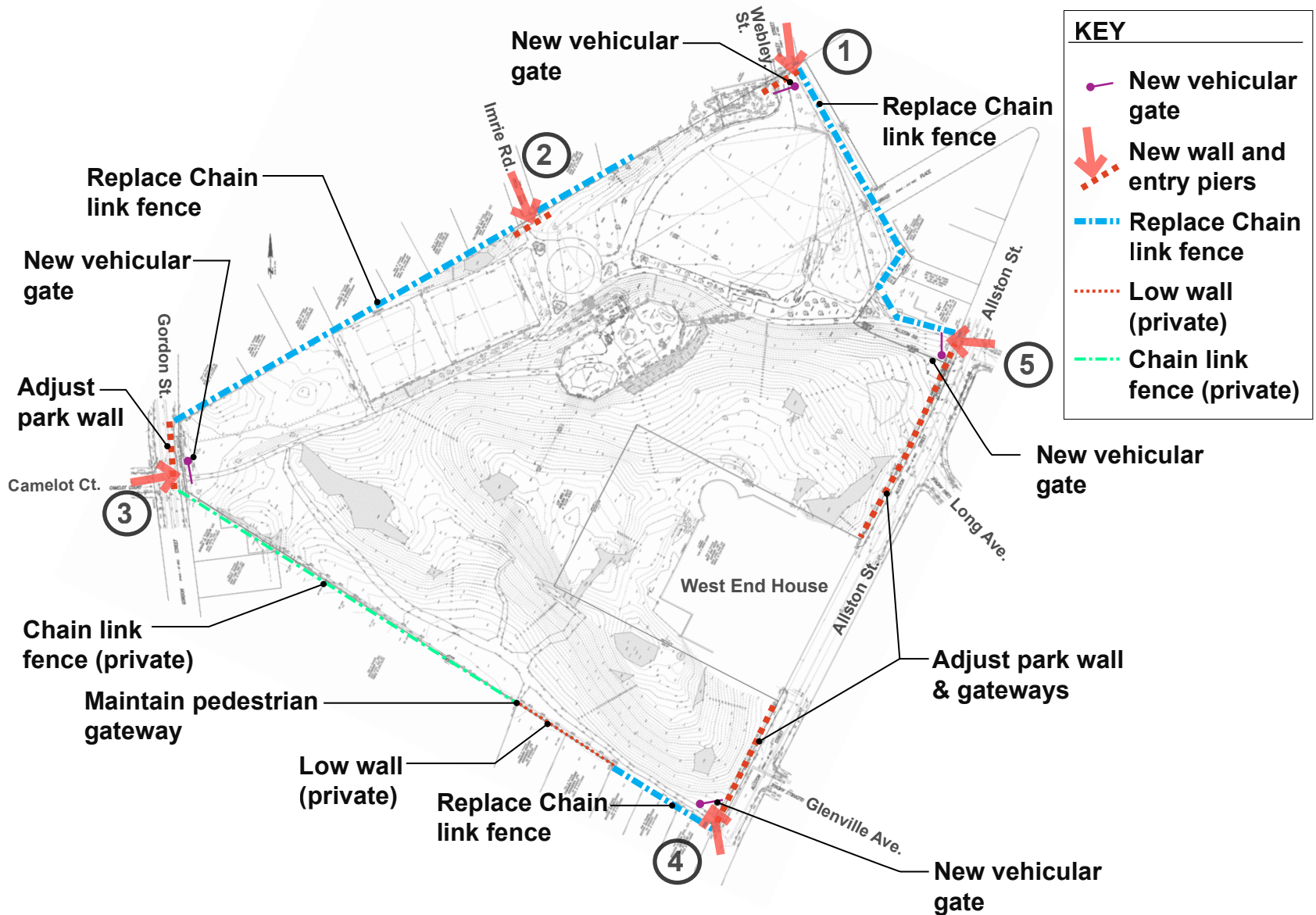
IMPROVE GATHERING SPACES



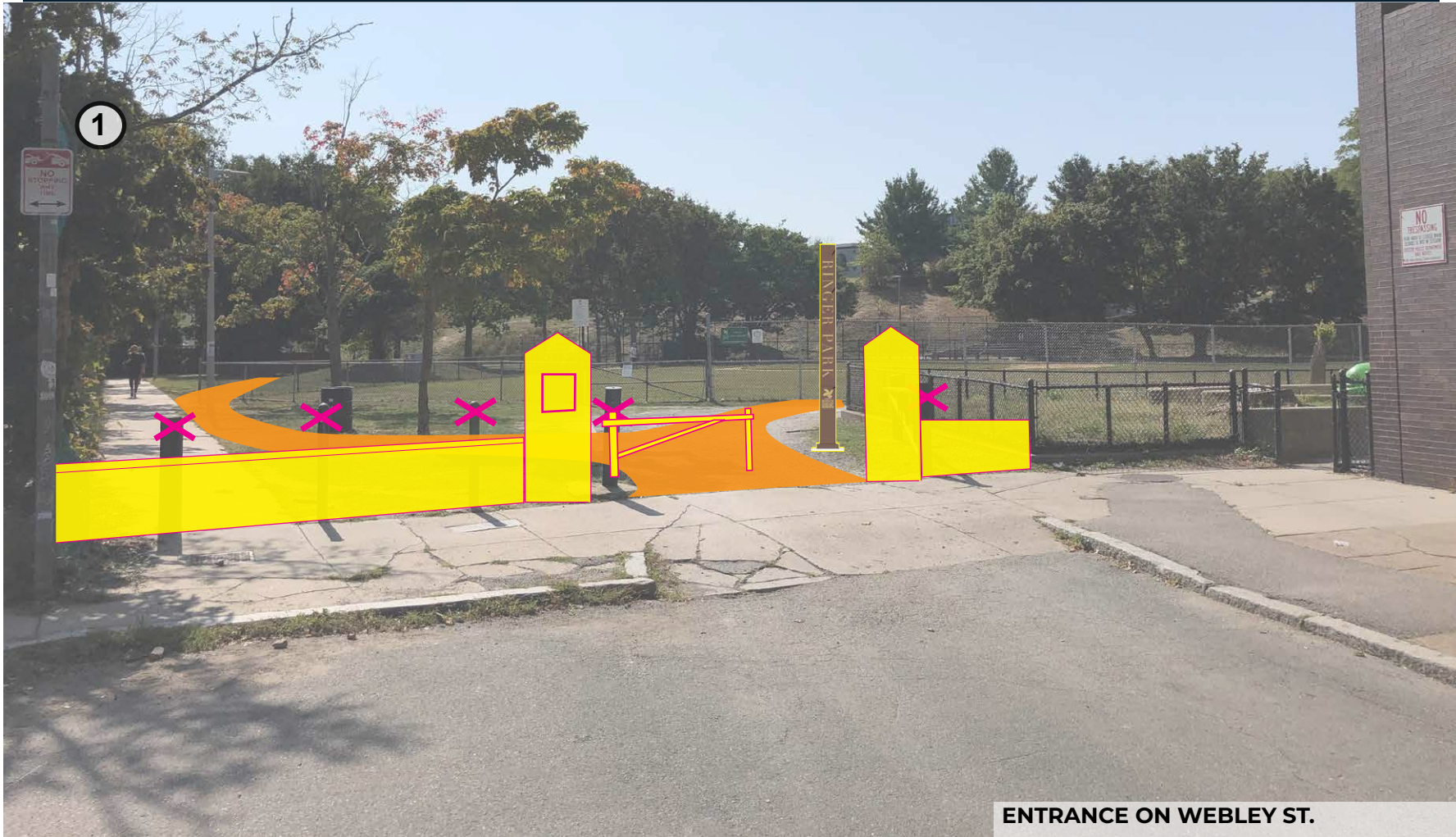
IMPROVE GATHERING SPACES



PLACEMAKING: Proposed Entrances & Edges



PLACEMAKING: Entrances



PLACEMAKING: Entrances

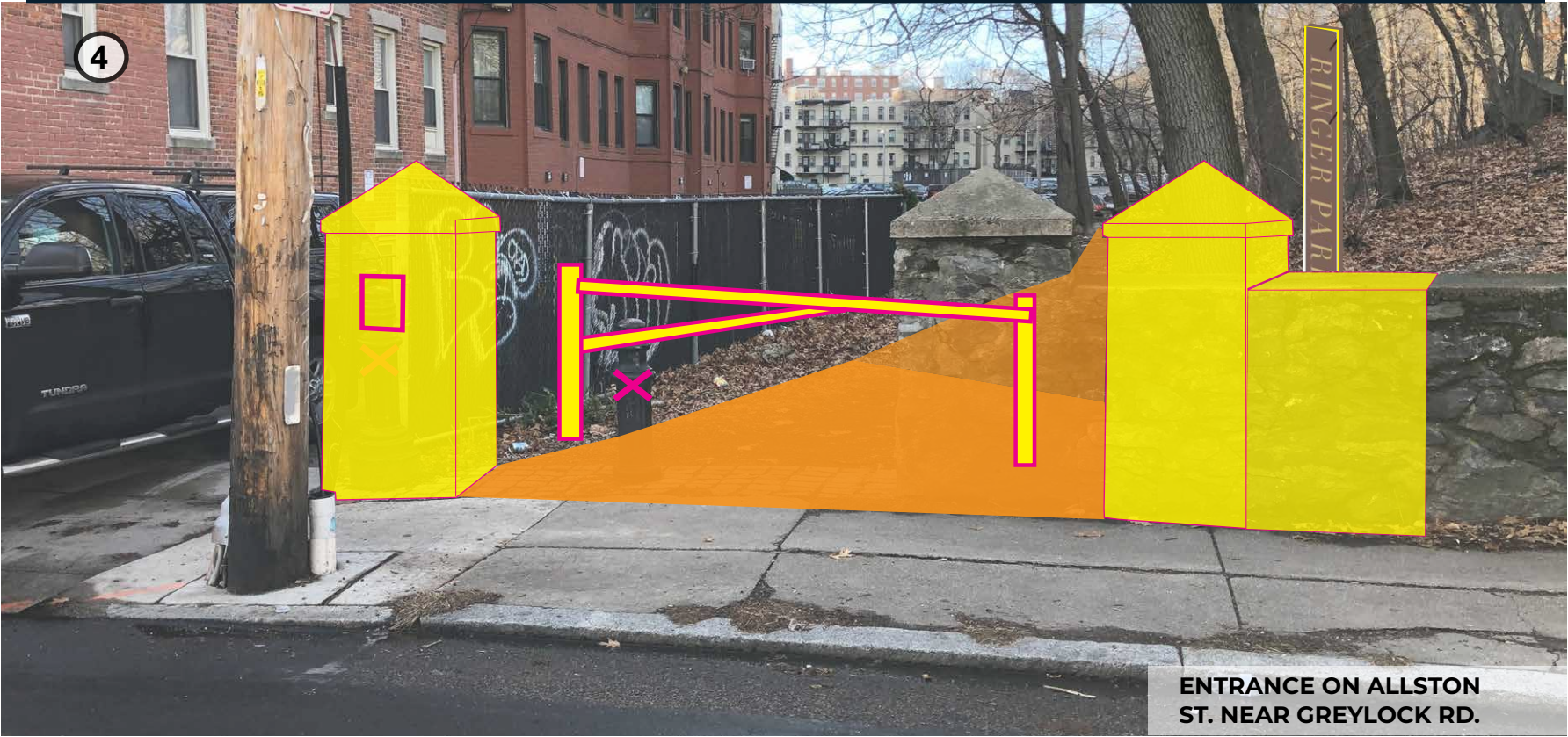
2



ENTRANCE ON IMRIE RD.

PLACEMAKING: Entrances

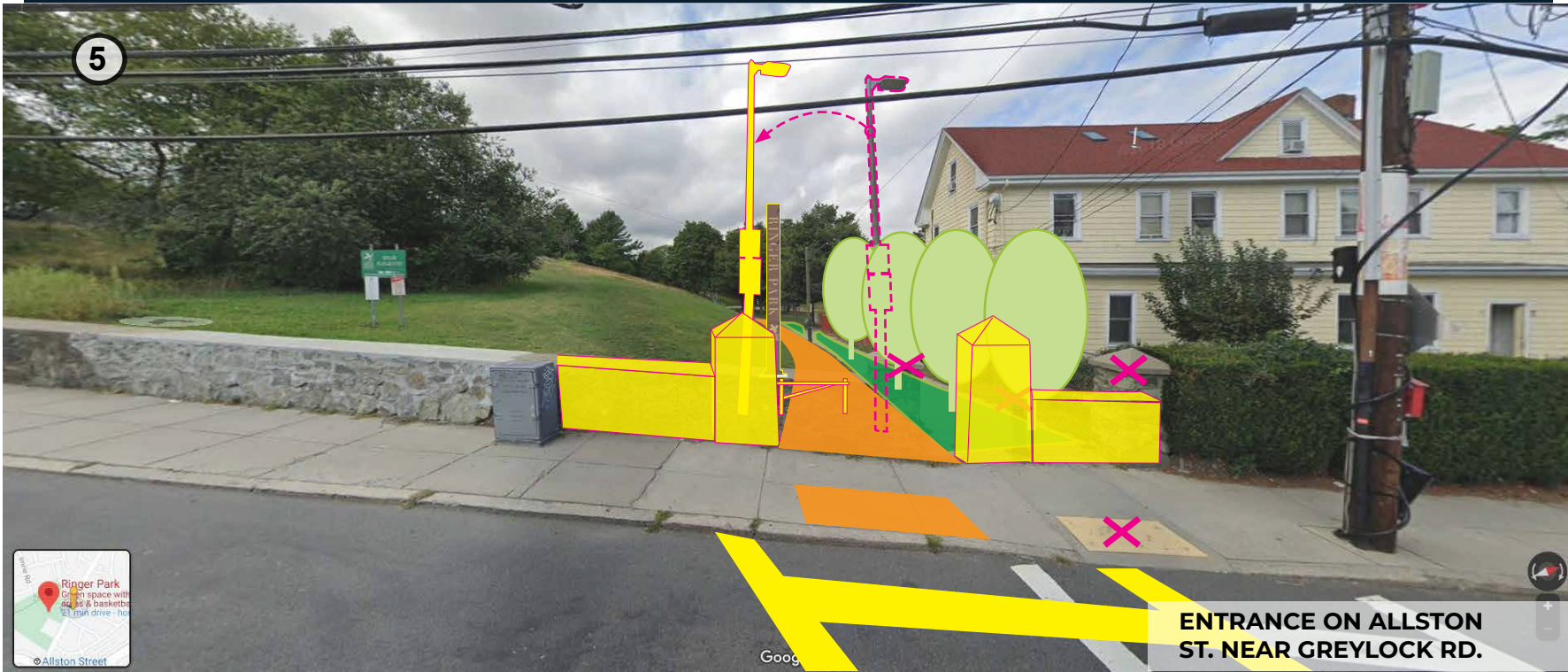
4



ENTRANCE ON ALLSTON ST. NEAR GREYLOCK RD.

PLACEMAKING: Entrances

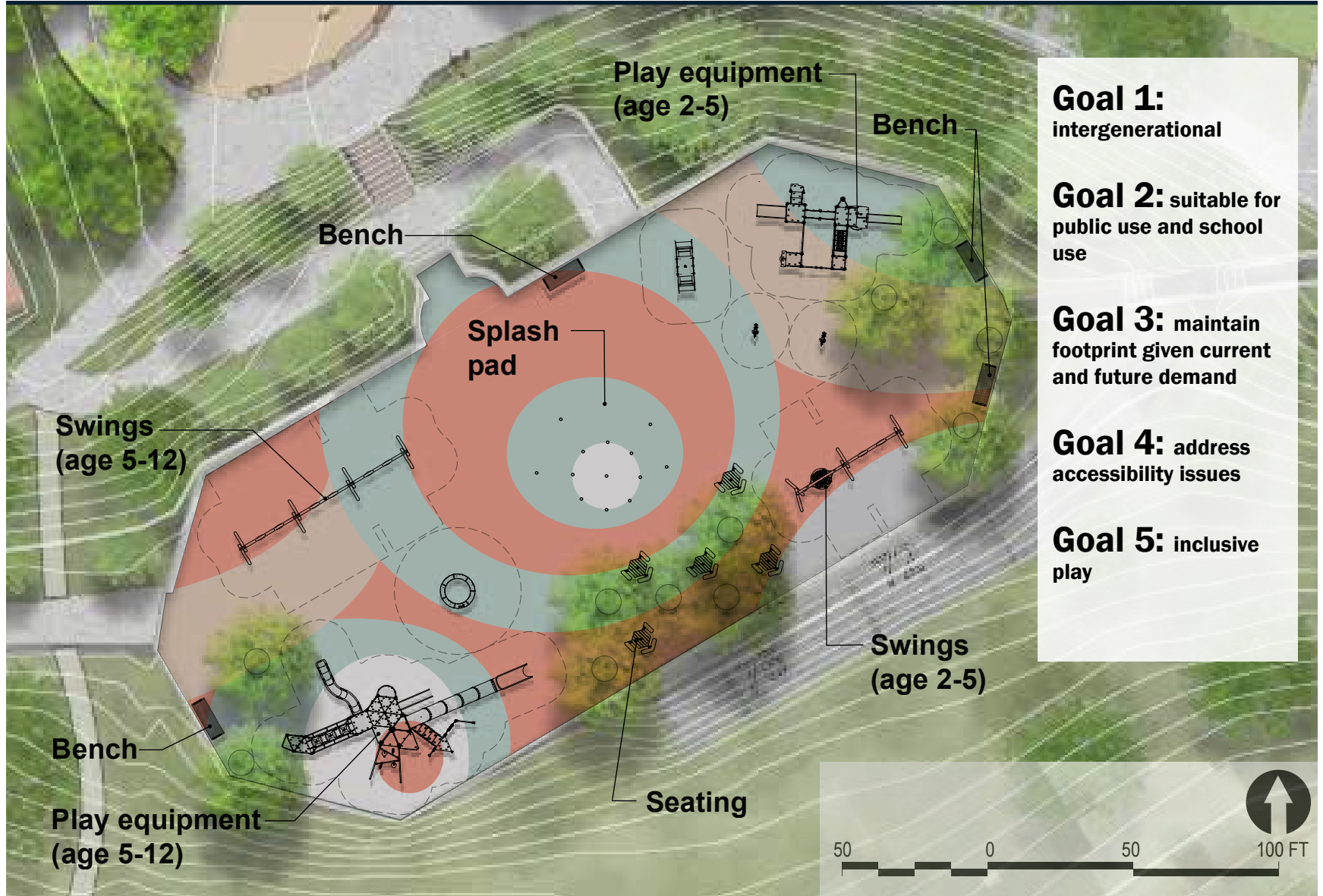
5



**ENTRANCE ON ALLSTON
ST. NEAR GREYLOCK RD.**

ENHANCE PARK PROGRAMMING: Playground

(Proposed conditions plan)



ENHANCE PARK PROGRAMMING: Fitness circuit



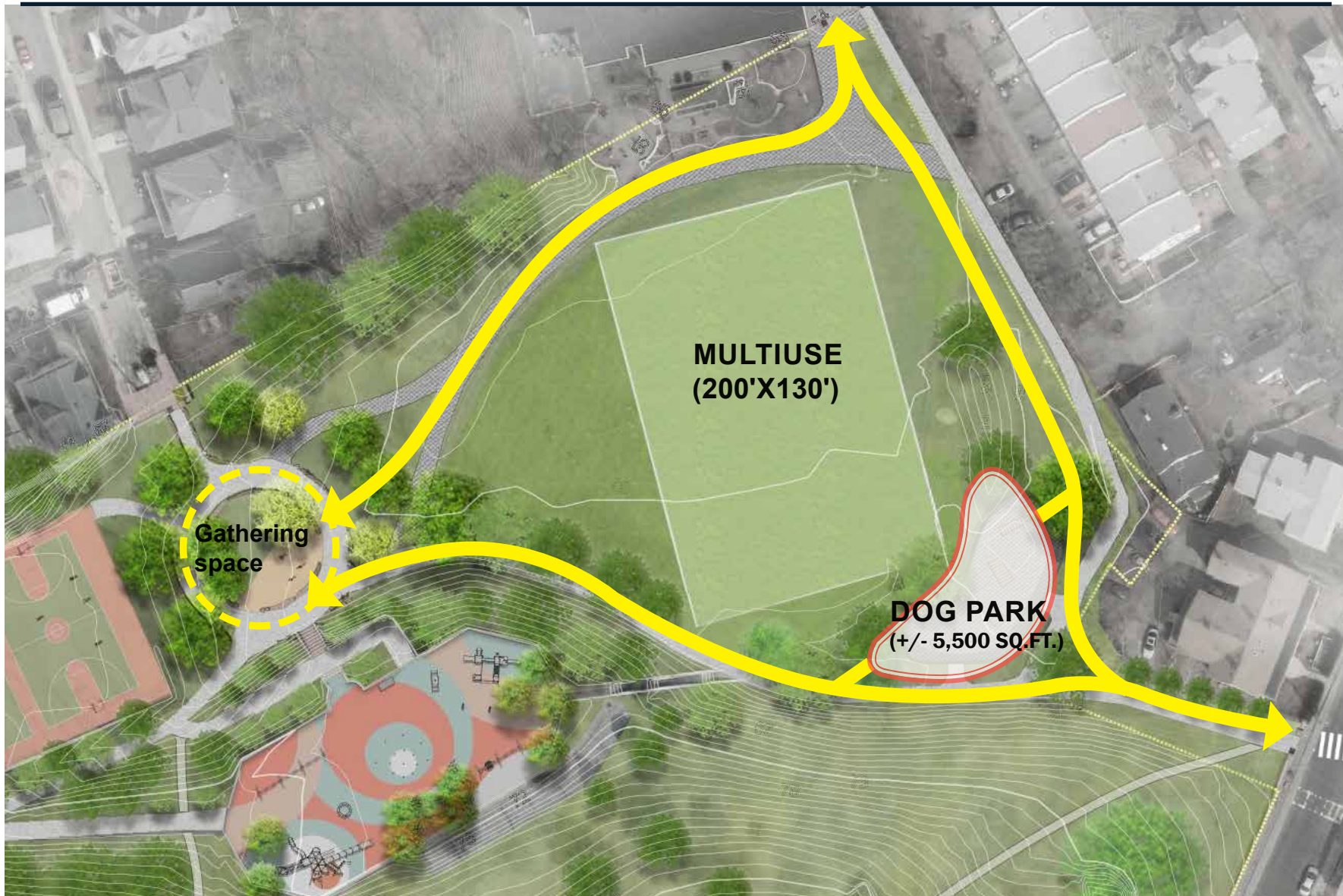
ENHANCE PARK PROGRAMMING: Dog park locations

#1: Retain little league baseball field and add separate dog park



ENHANCE PARK PROGRAMMING: Dog park locations

#2: Convert little league baseball field to multi-use field with dog park



PRIORITIES

SHORT TERM

- **PATH IMPROVEMENTS (NEW PAVEMENT, DRAINAGE, LIGHTING, ENTRANCES)**
- **TREE WORK (REMOVE DEAD TREES, PRUNING)**
- **PLAY AREA RENOVATION**
- **FORMALIZE DOG PARK OUTSIDE OF LITTLE LEAGUE FIELD**

LONGER TERM

- **WOODLAND TRAIL IMPROVEMENTS**
- **FIELD RENOVATION (PLAN WITH JM SCHOOL DESIGN)**
- **GATHERING SPACE IMPROVEMENTS**
- **COURT LIGHTING**

Proposed Site Plan



NEXT STEPS

COMPREHENSIVE PLAN DEVELOPMENT (LATE SPRING 2021)

- Develop recommendations
- Cost estimating
- Phasing
- Phase 1 implementation

VISIT PROJECT WEBSITE

WEB LINK:

<https://www.boston.gov/departments/parks-and-recreation/ringer-park-improvements>

Scan me with your
phone's camera!



CONTACT

Cathy Baker-Eclipse, BPRD Project Manager

cathy.baker-eclipse@boston.gov

617-961-3058



THANK YOU!

See the project website for future updates.

For questions, maintenance requests or concerns regarding any of our parks contact 311

