

EXISTING OVERALL

A



B



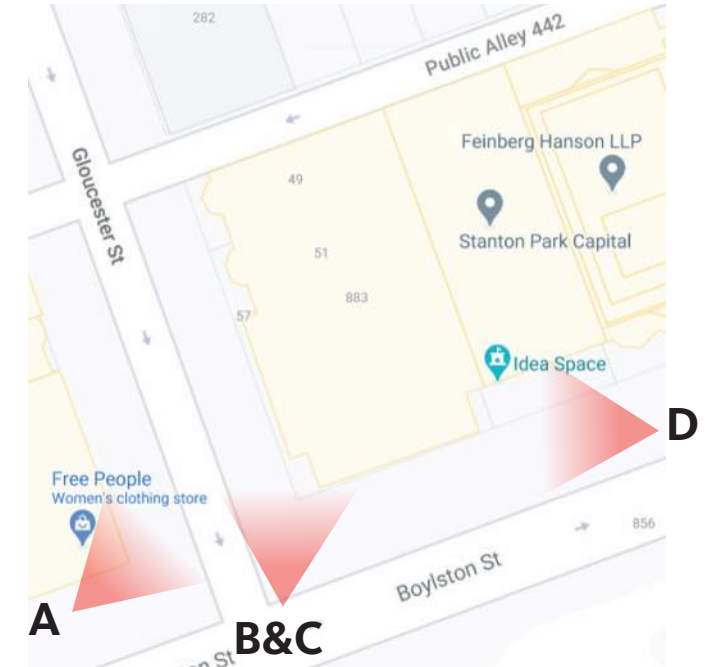
C



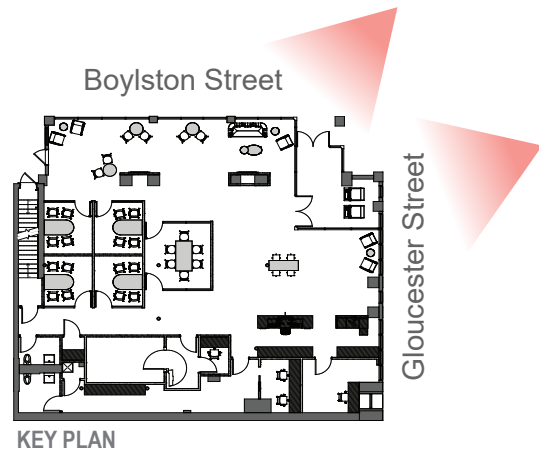
D



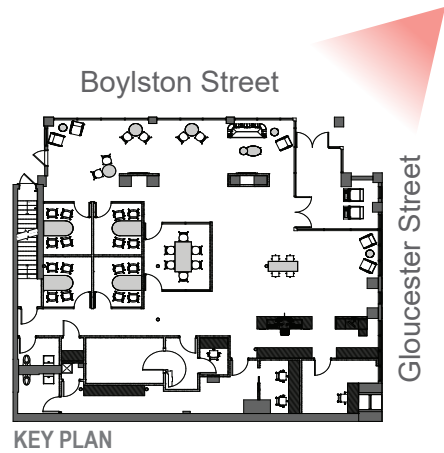
D



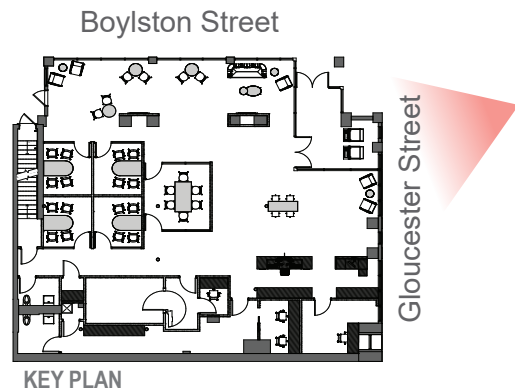
EXISTING VIEWS



EXTERIOR RENDERING - FRONT

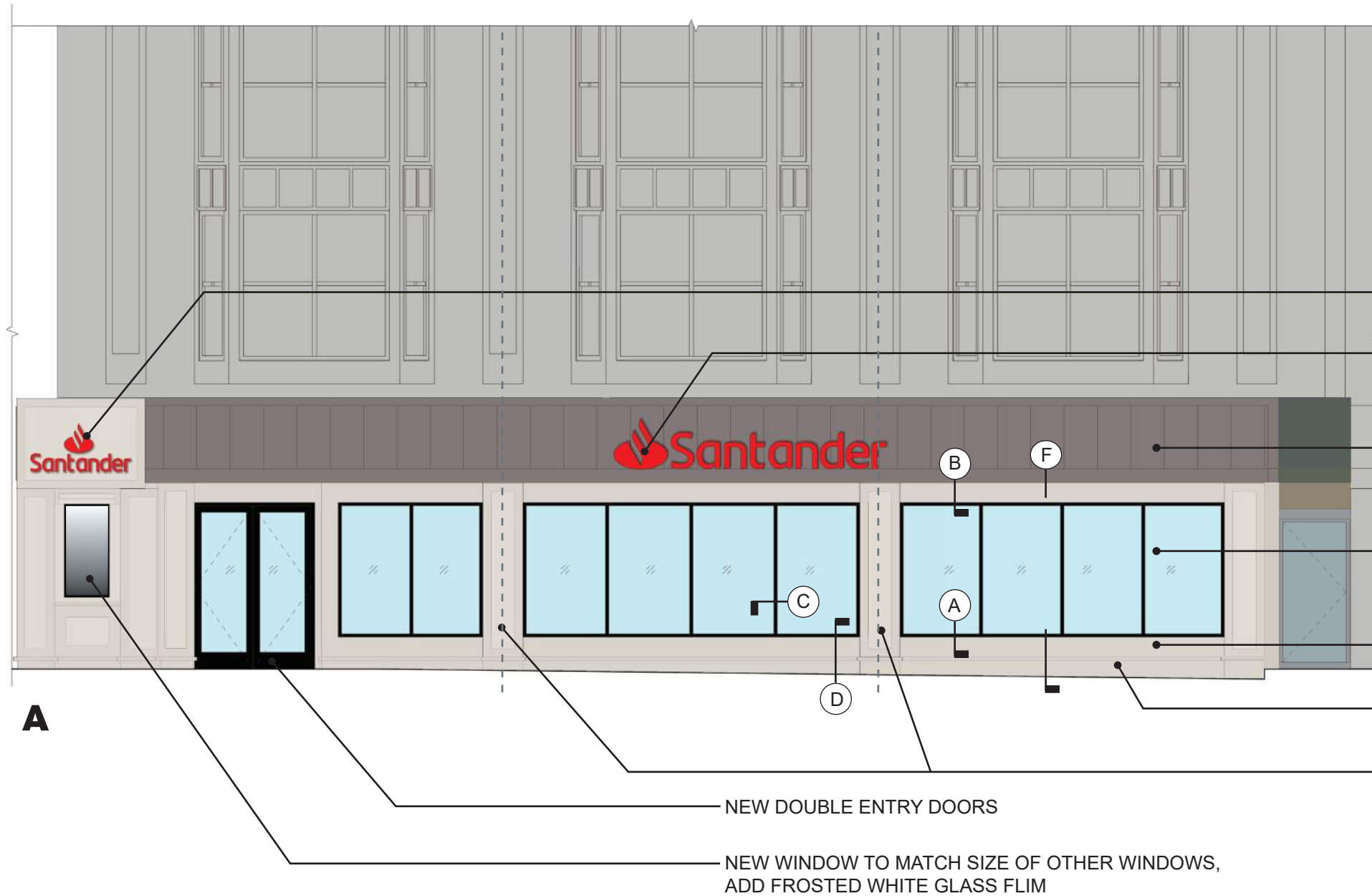


EXTERIOR RENDERING - SIDE

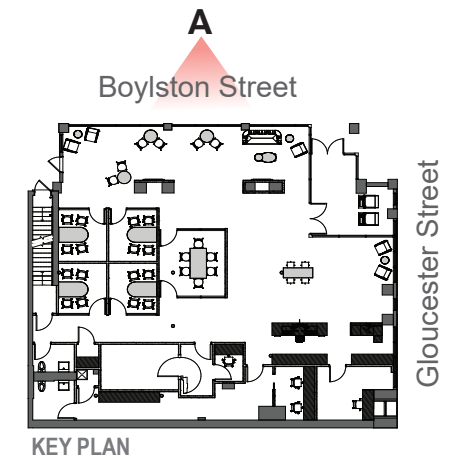


EXTERIOR ELEVATIONS - FRONT

MATERIAL AND FINISHES

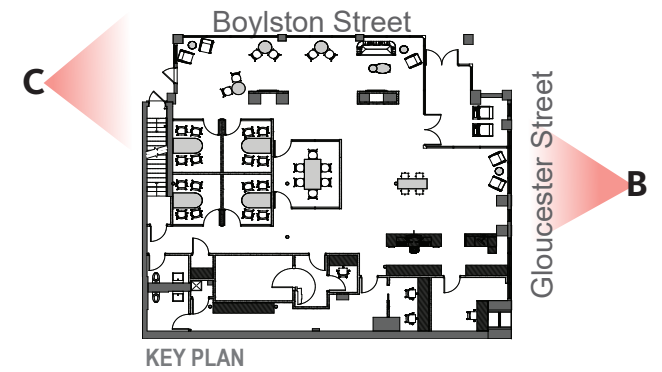
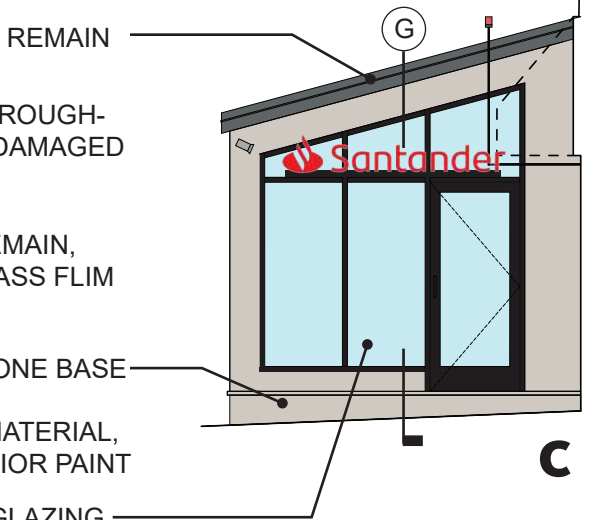
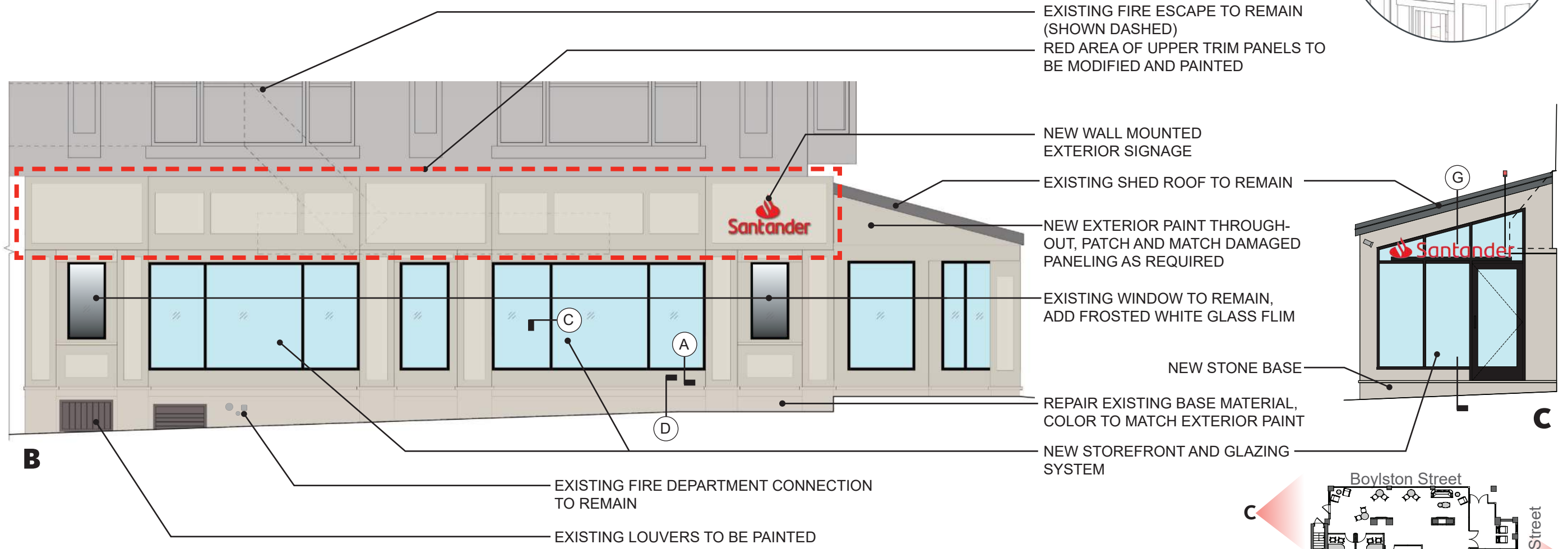
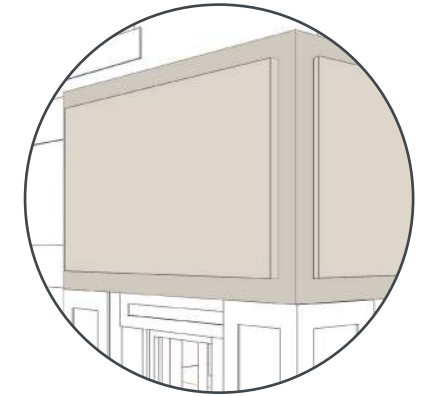


- NEW WALL MOUNTED EXTERIOR SIGNAGE
- NEW ROOF MOUNTED SIGN IN THE SAME LOCATION AS PREVIOUS SIGN
- EXISTING SHED ROOF TO REMAIN
- NEW STOREFRONT AND GLAZING SYSTEM
- NEW EXTERIOR BASE PAINT
- NEW STONE BASE
- NEW PANELIZED COLUMNS



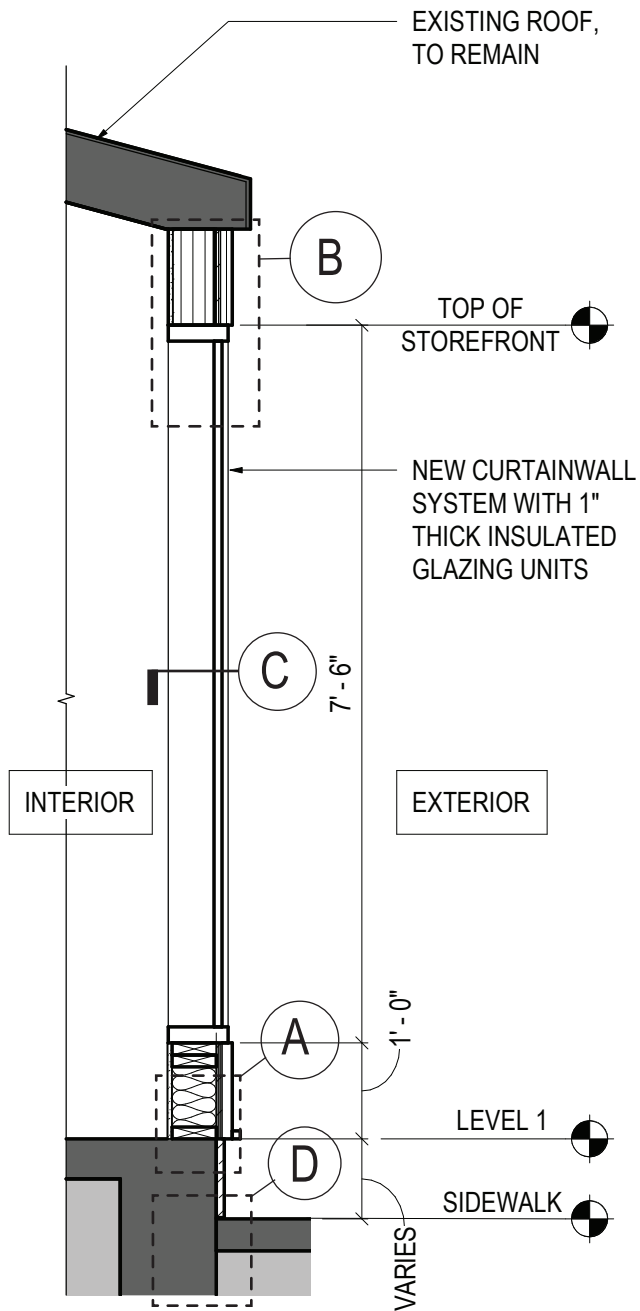
EXTERIOR ELEVATIONS - SIDE

PANEL DETAIL:
 UPPER TRIM PANELS ON THE GLOUCESTER STREET SIDE TO BE RECONFIGURED - CENTER PART COMES FORWARD, SIGNAGE TO BE WALL-MOUNTED, REFER TO ELEVATIONS

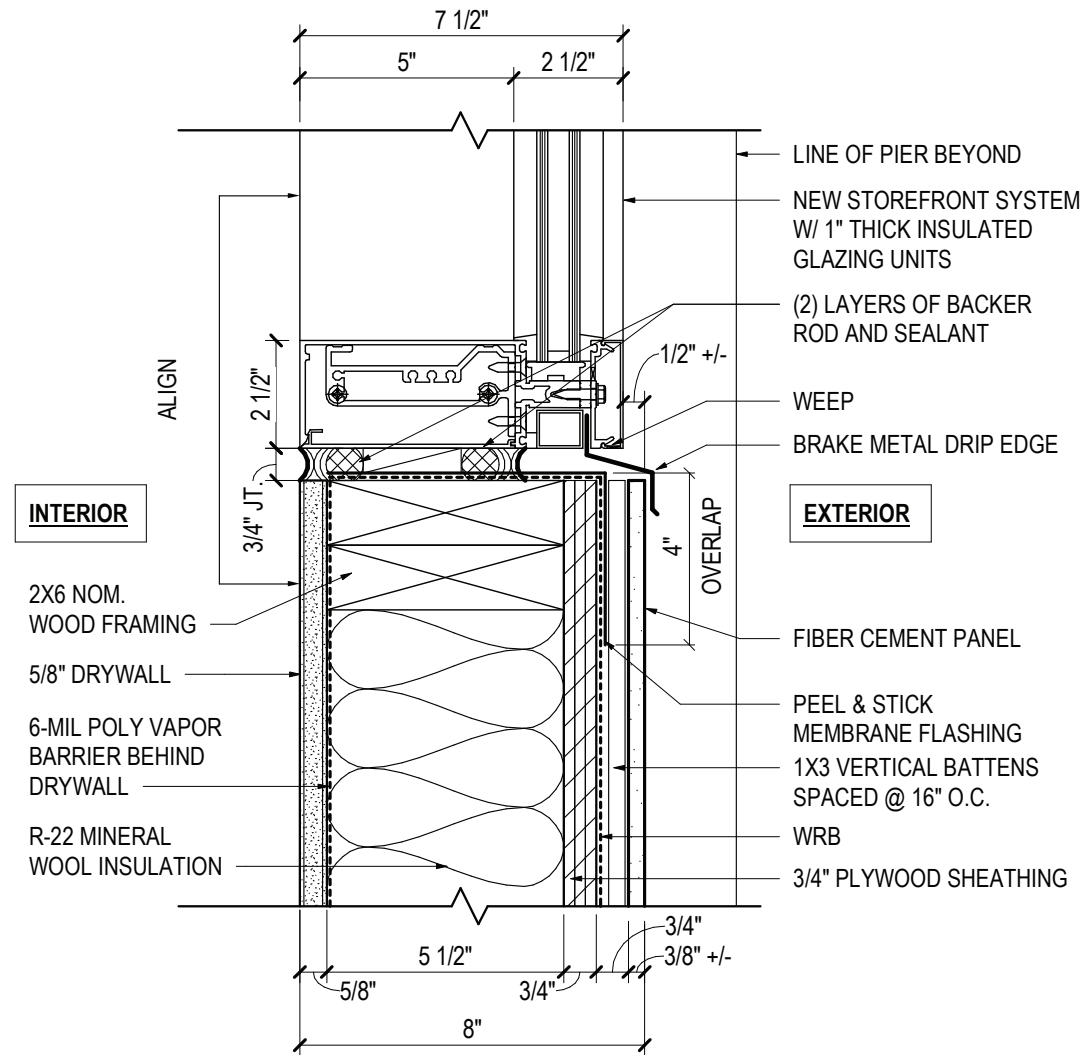


STOREFRONT DETAILS

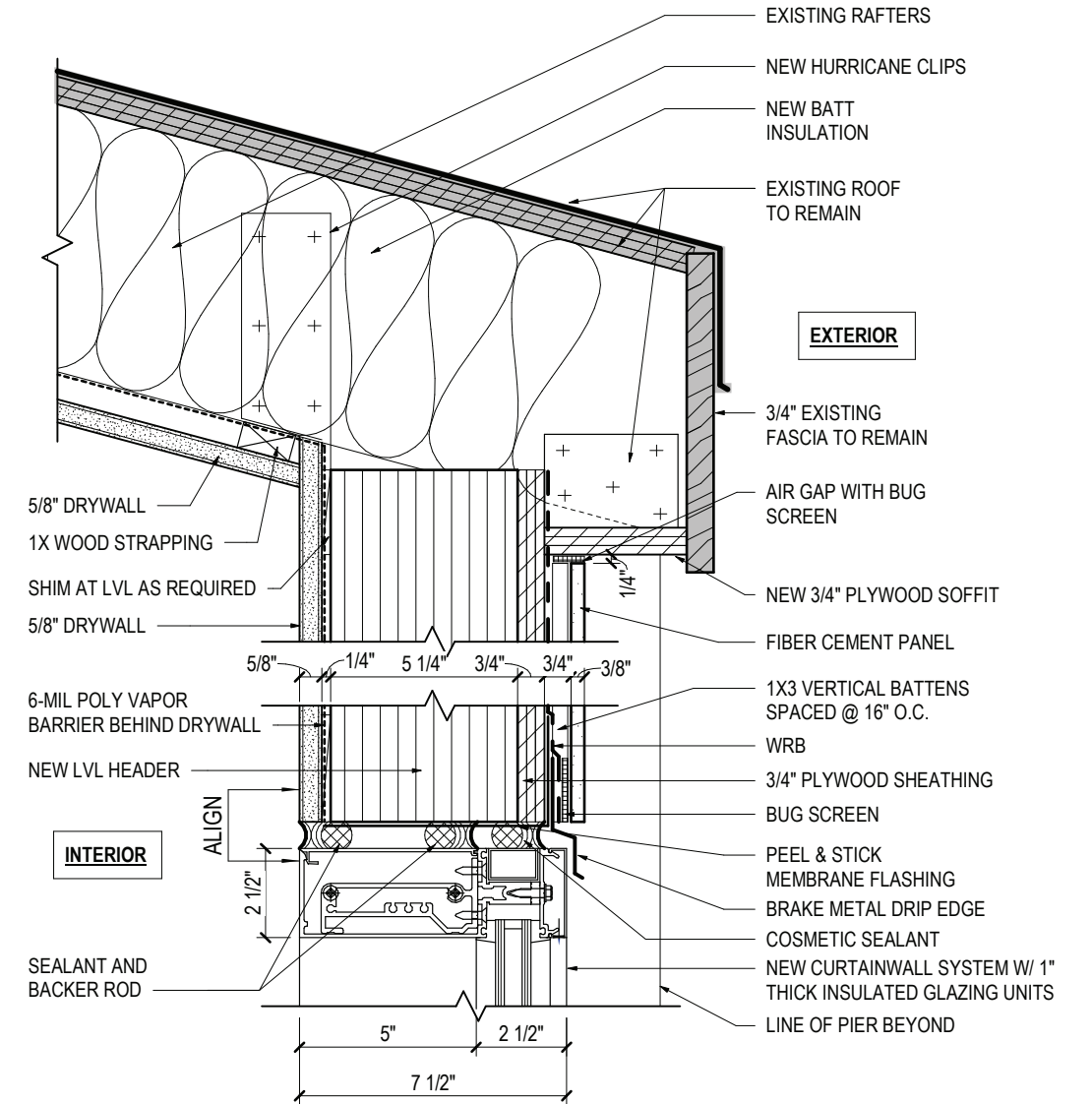
SHED SECTION F - FRONT



DETAIL A - SHED SILL

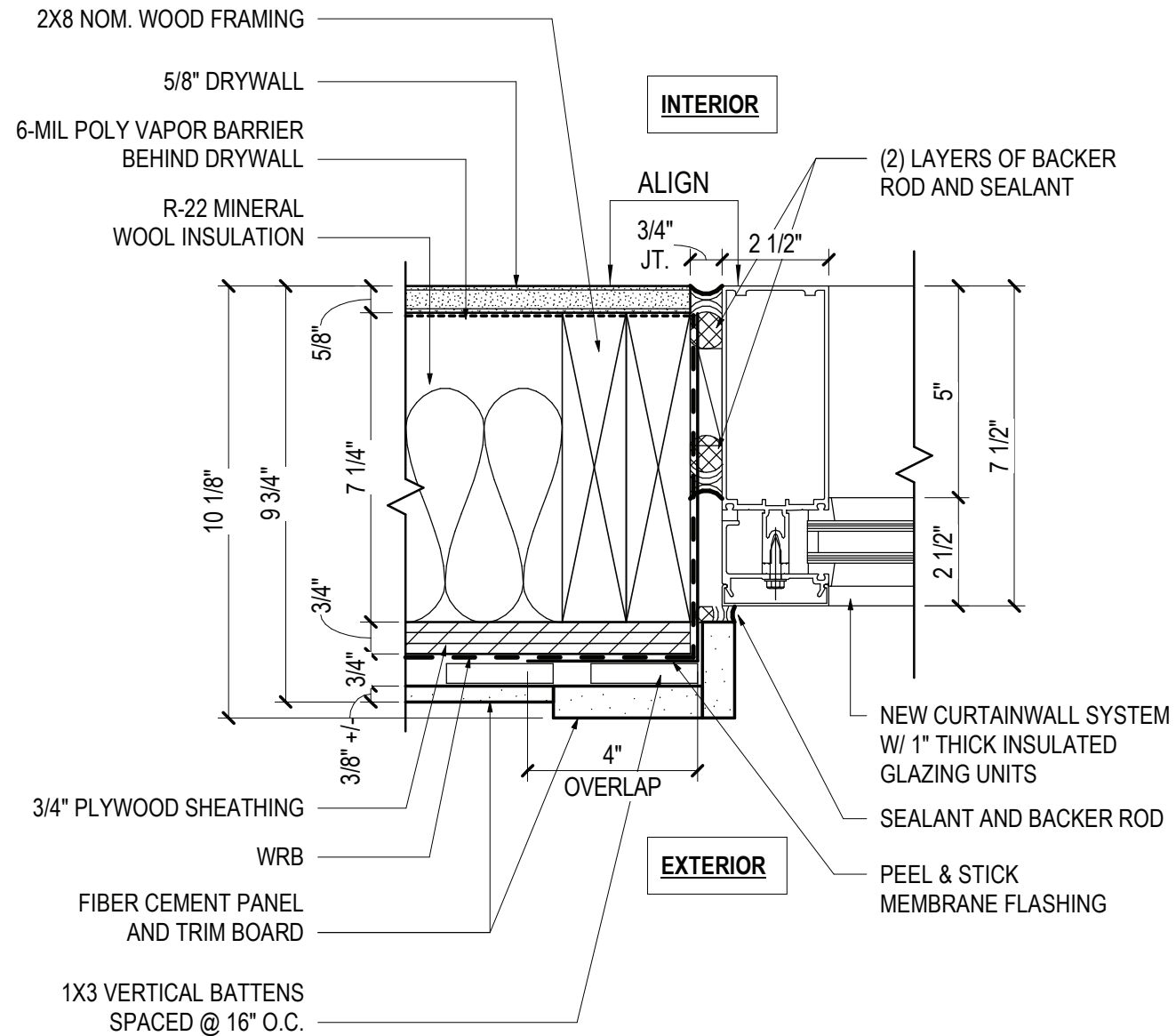


DETAIL B - SHED HEAD/EAVE

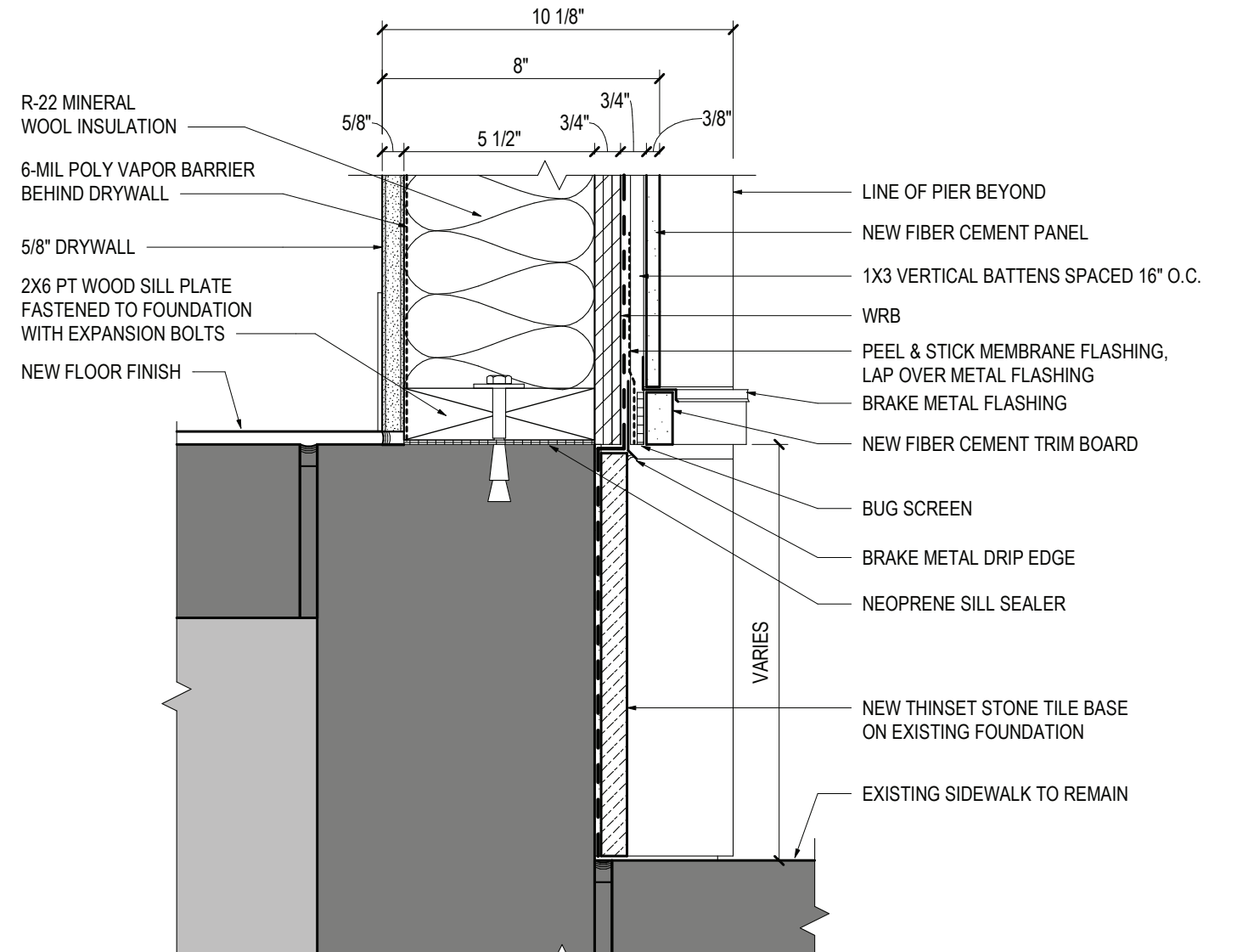


STOREFRONT DETAILS

DETAIL C - TYPICAL JAMB DETAIL

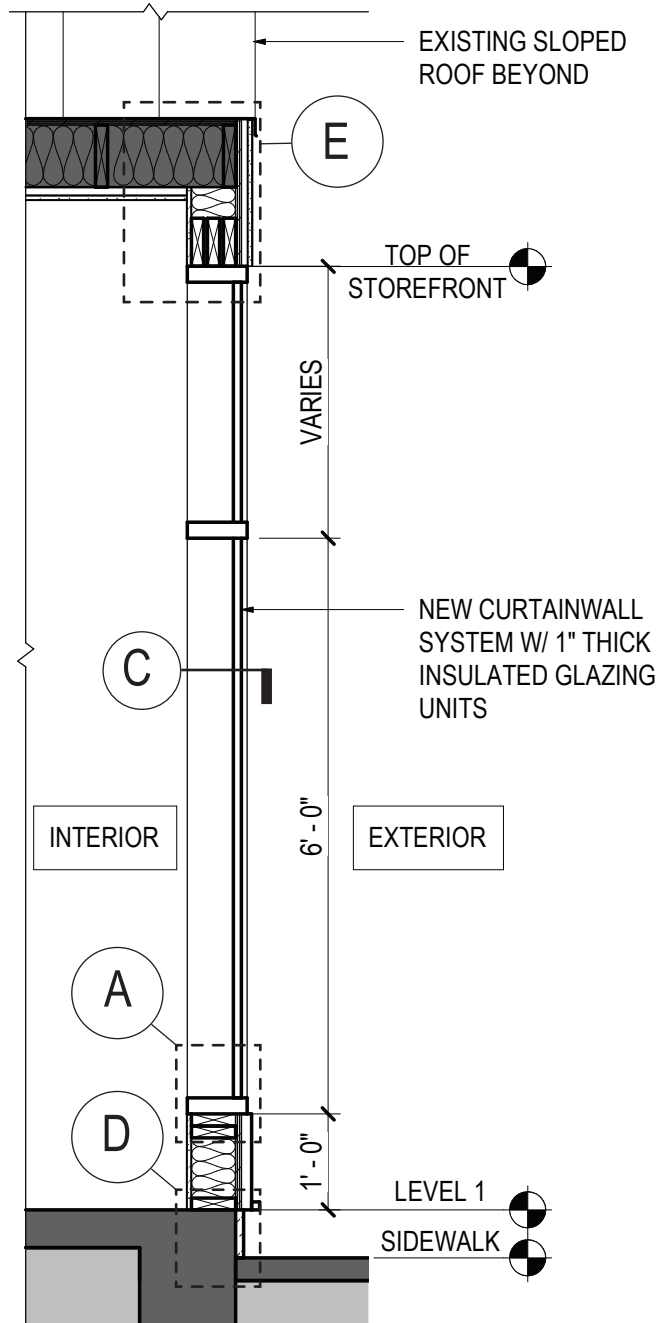


DETAIL D - TYPICAL STONE BASE DETAIL

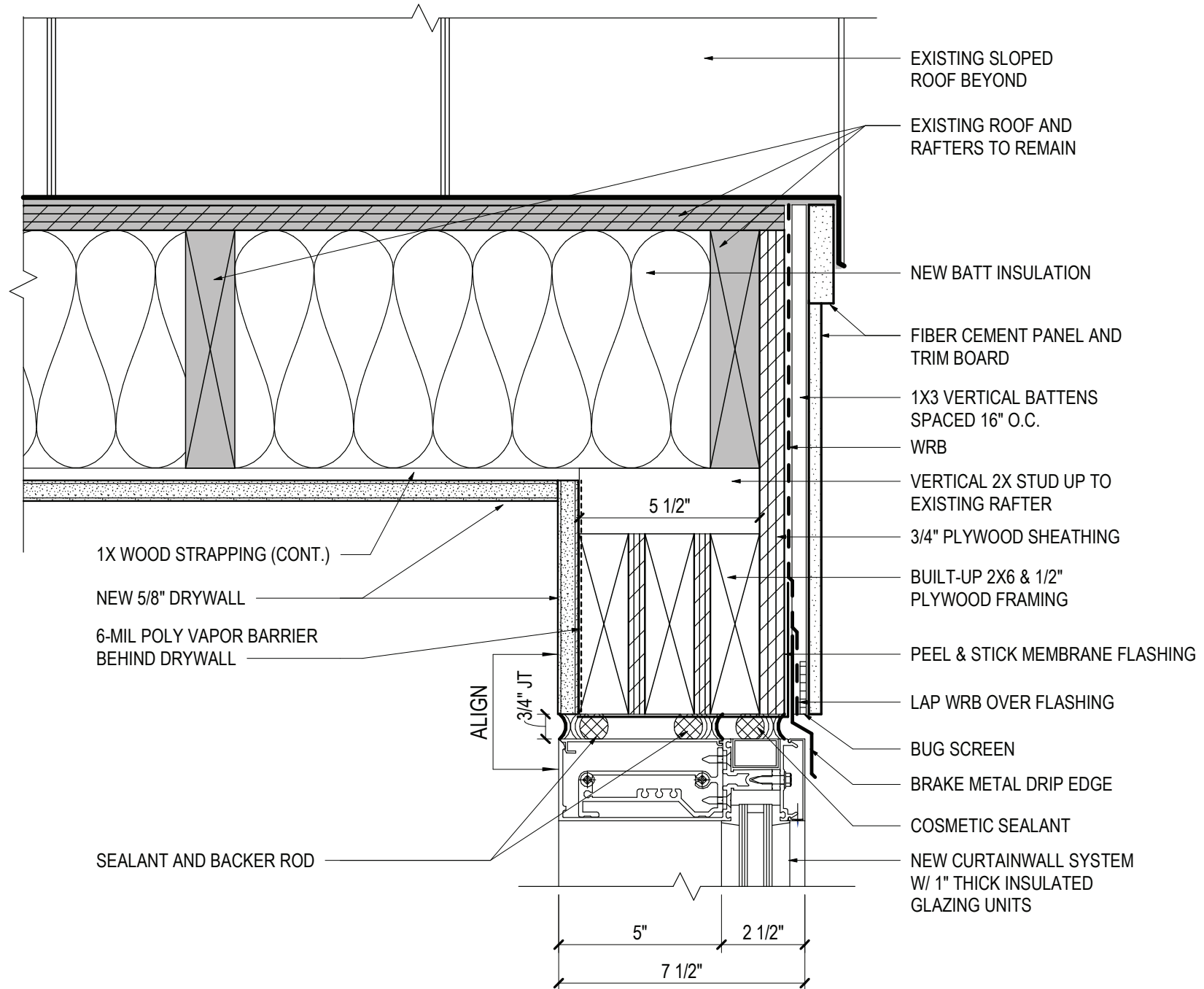


STOREFRONT DETAILS

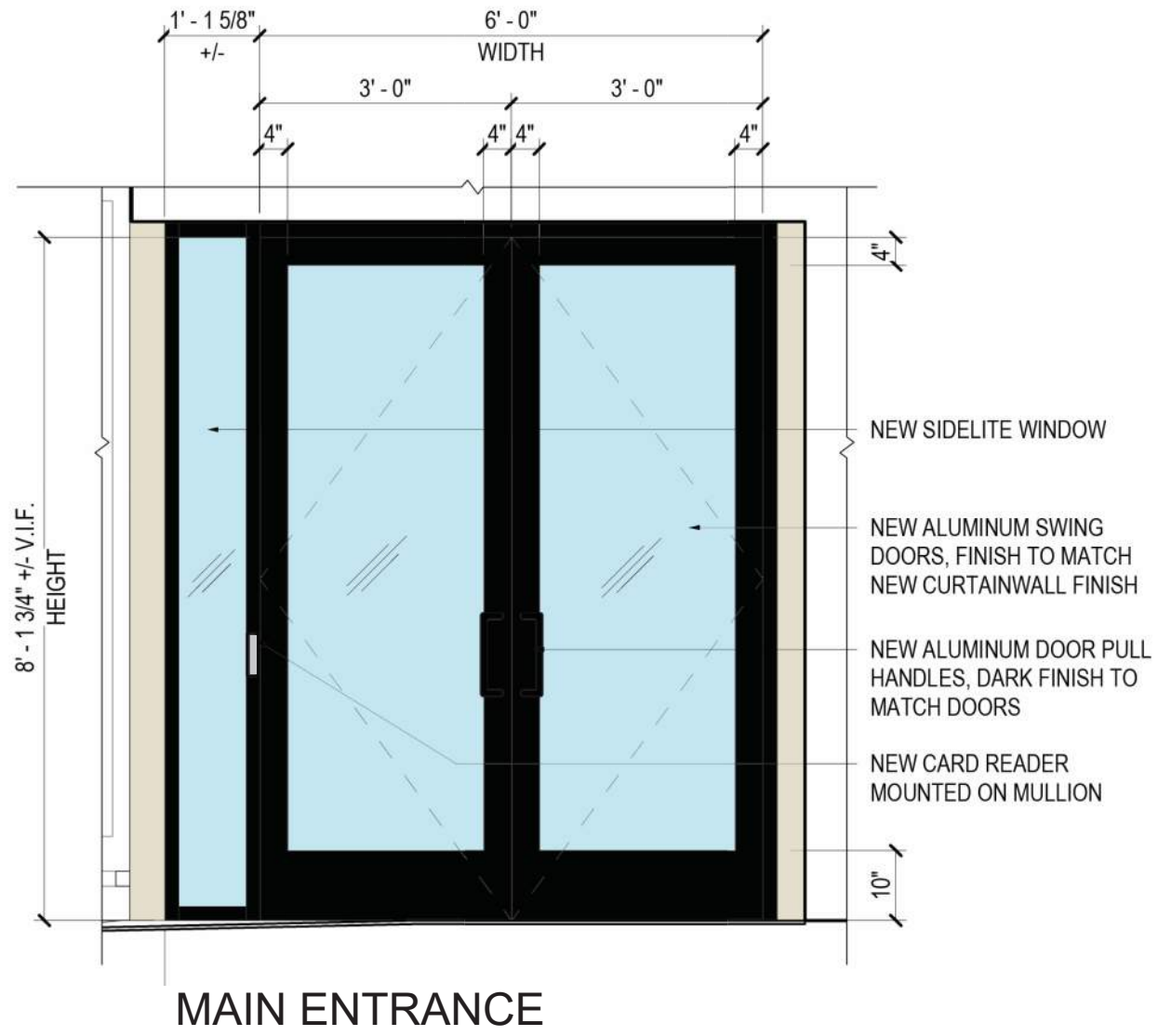
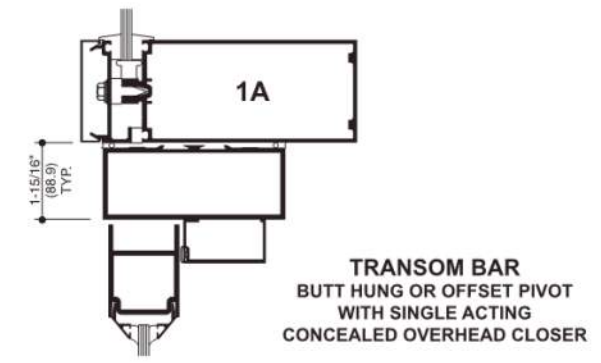
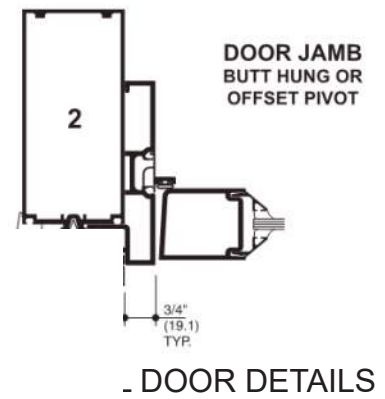
SHED SECTION G - SIDE



DETAIL E - SLOPED CURTAINWALL HEAD

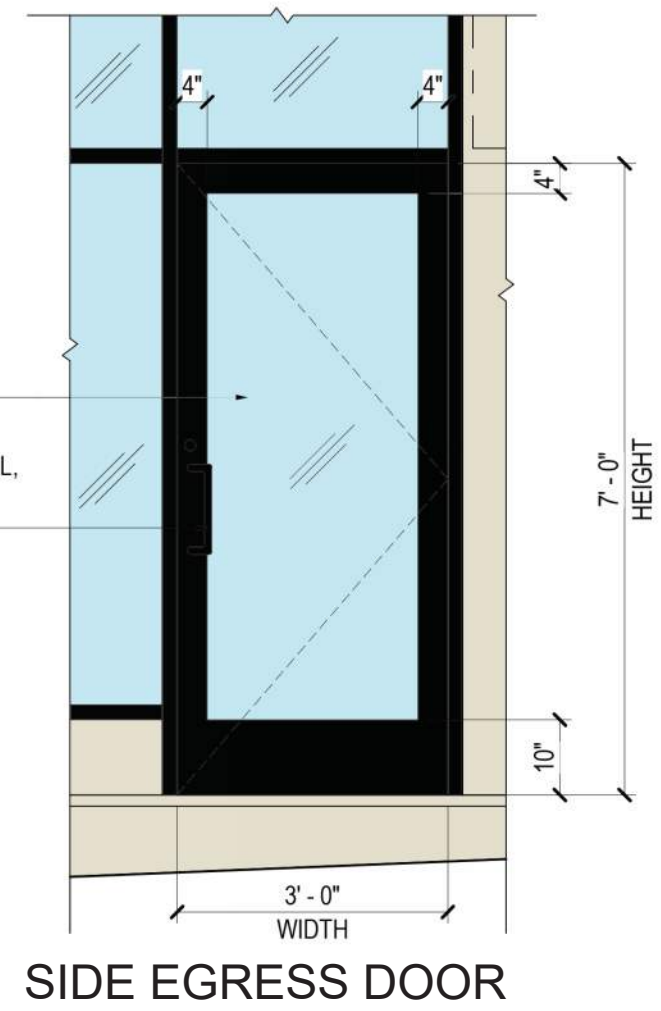


STOREFRONT DOORS



NEW ALUMINUM SWING DOOR, FINISH TO MATCH CURTAINWALL SYSTEM

NEW ALUMINUM DOOR PULL, DARK FINISH TO MATCH STOREFRONT



CLEAR INSULATED GLAZING UNITS

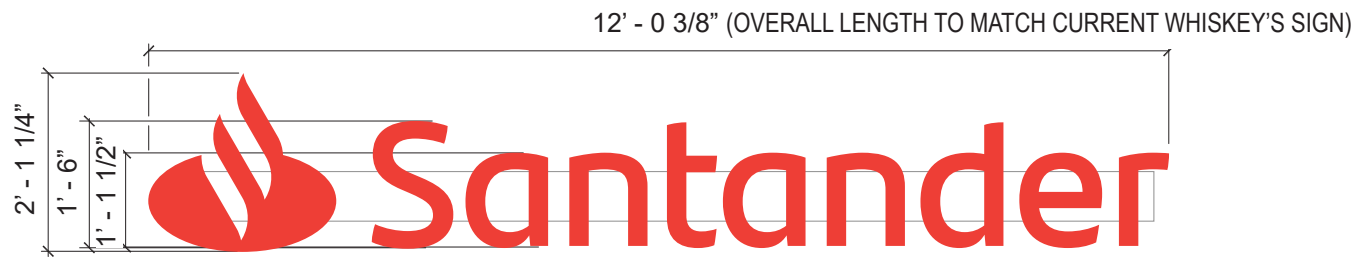


DOOR HARDWARE



ALUMINUM FINISH

SIGNAGE



RED ILLUMINATED RACEWAY CHANNEL LETTERS (RIRCL-##-2018)

NOT TO SCALE

ROOF SIGN:

RED FACE LED ILLUMINATED LETTERS WITH GRAY RETURN. 3" THICK LETTERS. RACEWAY MOUNTED. RACEWAY LOCATION IS THE SAME AS CURRENT RACEWAY FOR ROOF SIGNAGE

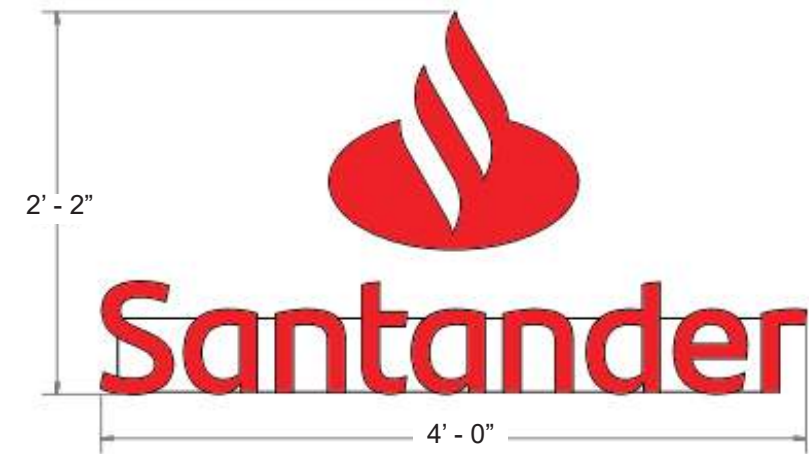


RED ILLUMINATED RACEWAY CHANNEL LETTERS (RIRCL-##-2018)

NOT TO SCALE

SIDE ELEVATION SIGN:

RED FACE LED ILLUMINATED LETTER WITH GRAY RETURN. 1 1/2" THICK LETTER. MOUNTED TO STOREFRONT HORIZONTAL FRAMING MEMBER.



WALL MOUNTED SIGN:

RED FACE ILLUMINATED LETTERS WITH GRAY RETURN. 1 1/2" THICK LETTERS.

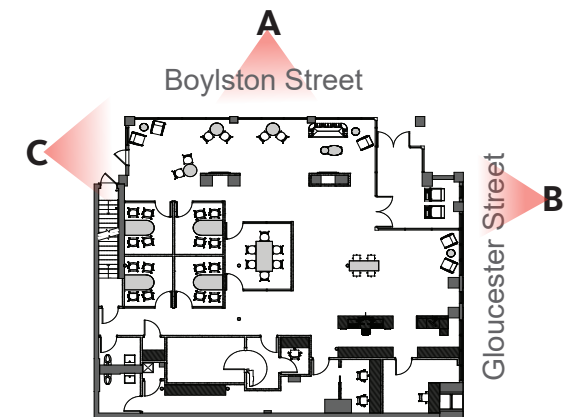
LED LIGHT SOURCE:

CONSISTENT WHITE LIGHT. SOLID RETURNS ON THE LETTERS.



SANTANDER RED

ELEVATION A (BOYLSTON STREET) = 34 SF
 ELEVATION B (GLOUCESTER STREET) = 8.7 SF
 ELEVATION C = 11.4 SF
TOTAL SIGNAGE AREA = 54.1 SF



KEY PLAN