

JOHNSON GATES BASIN COVERING

Back Bay Fens



AERIAL PHOTO



HISTORIC PHOTOS (pre-1920)



THE JOHNSON MEMORIAL GATES WERE GIFTED TO THE CITY OF BOSTON AT THE BEQUEST OF ELLEN C. JOHNSON IN 1902. THEY COMMEMORATE HER HUSBAND, JESSE JOHNSON. ALTHOUGH THE JOHNSON GATES ARE NOT IN THE PERIOD OF PRIMARY SIGNIFICANCE FOR THE EMERALD NECKLACE, THE MONUMENTS ARE HISTORICALLY SIGNIFICANT.

BASIN CONDITIONS

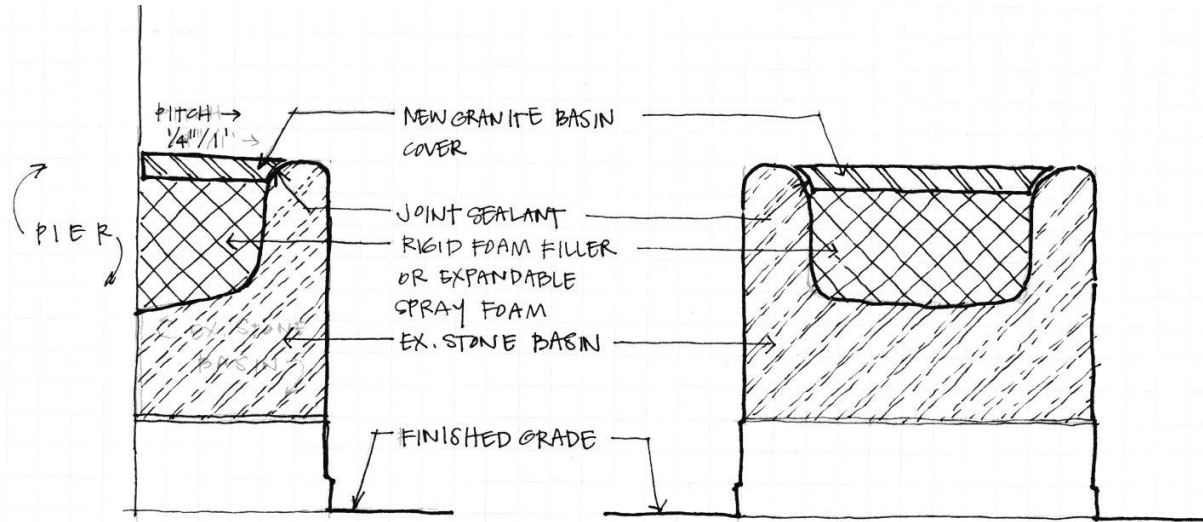


PHOTO SHOWING CRACK IN SOUTH BASIN (PRE 2017 CONDITION)

FALL 2020 PHOTO SHOWING COMPLETED CRACK REPAIR. BASIN FILLED WITH RAIN WATER HAS THE POTENTIAL TO RE-OPEN CRACK OR CREATE NEW ONE.



PROPOSED DETAIL



SECTION THRU BASIN & PIER
NOT TO SCALE

SECTION THRU BASIN (PIER BEYOND)
NOT TO SCALE

01.26.21
BPRD

HORSE TROUGH BASINS



2013: CONSERVATORS REMOVED THE EXISTING GRANITE COVER OF THE HORSE TROUGHS AND RESEALED THE JOINTS.

TIMELINE

WINTER 2021

Agency Reviews

- January 2021 - Boston Art Commission
- February 2021 - Boston Landmarks Commission

Early SPRING 2021

Solicit bids for work

SPRING 2021

Measure Basin, fabricate basin cover and install

SUMMER 2021

Closeout project

THANK YOU

