

Improvements to **CLARENDON TOT LOT**



MEETING RECORDING



The Boston Parks and Recreation Department will be recording the meeting and posting to our project webpage for those who are unable to attend the Zoom meeting live.

It is possible that participants may also be recording the meeting with their phones cameras or other devices. If you do not wish to be recorded during this meeting, please keep your microphone and camera off.

VIRTUAL MEETING ETIQUETTE

We want to ensure this conversation is a pleasant experience for all and that all community members/ stakeholders are comfortable sharing their comments, questions and feedback.

Please be respectful and mindful of each other's time when asking questions/ providing comments, so that all attendees are able to participate in the meeting.

Keep questions/ comments project-specific and not personal to yield solution-driven discussion.

Please wait until all attendees have had the opportunity to ask a question/ provide a comment before providing additional questions/ comments.

You can always set up a conversation with **Nathan Frazee**, Nathan.Frazee@boston.gov to further discuss the project or process.

ZOOM TIPS

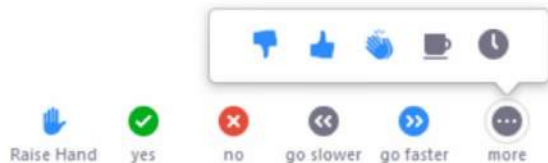
Here is how you can participate during the question and answer part of the presentation.

DURING THE PRESENTATION:



VIA WEB:

Turn video on / off.



To use these non-verbal options click on participants (bottom of screen); these options will pop up in side bar.

DURING THE Q&A:



JOINING VIA PHONE?

Use *9 to raise hand to ask for audio / video permission to ask questions or provide comments.



VIA WEB:

Chat to ask questions / comments or provide responses to poll questions



Raise hand to ask for audio / video permission to ask questions or provide comments.

AGENDA

1

PROJECT TEAM INTRODUCTION

2

WHAT WE HEARD AT PUBLIC MEETING #1

3

CONCEPTUAL PLAN ALTERNATIVES

4

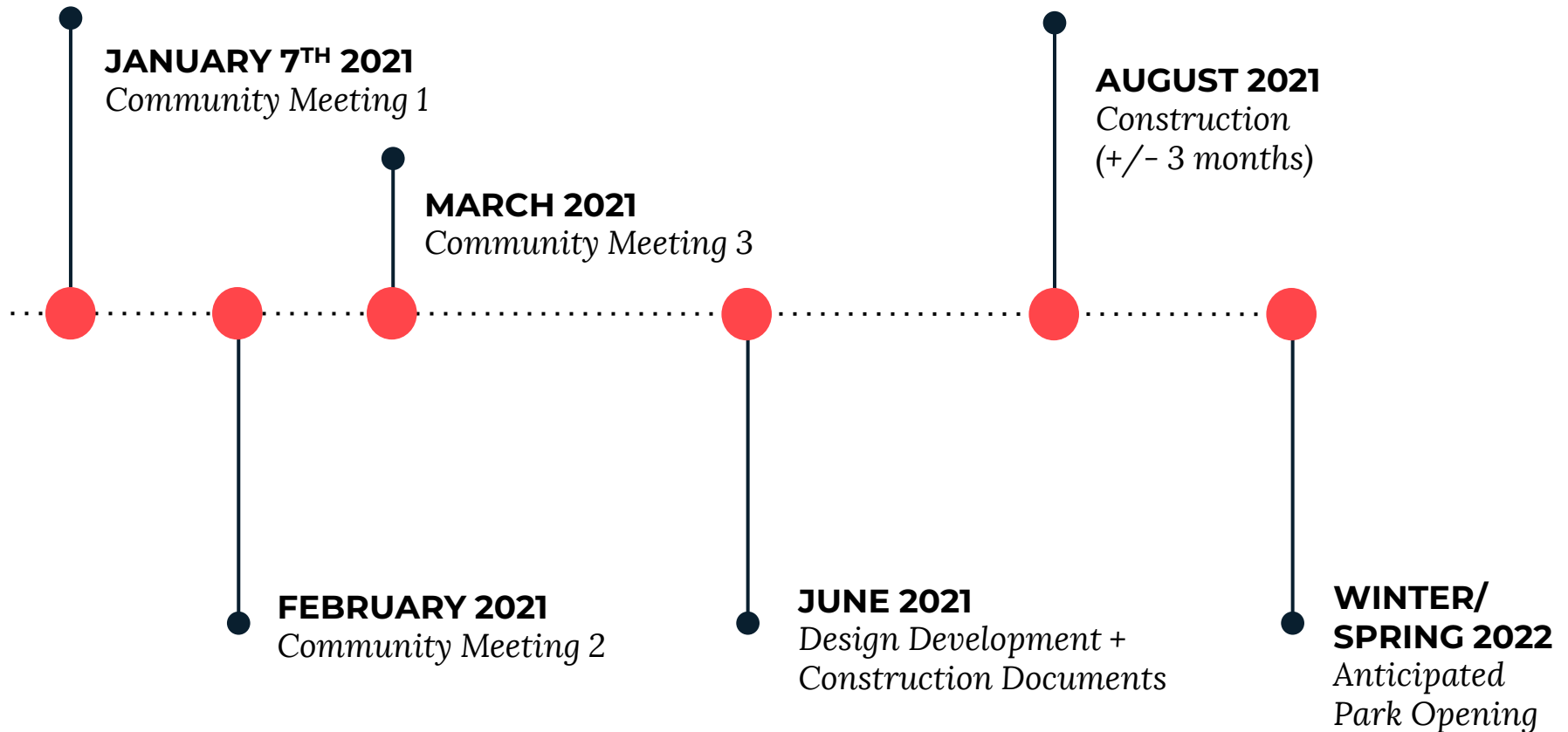
LISTENING & DISCUSSION

5

CLOSING REMARKS & NEXT STEPS

PROJECT SCHEDULE & FUNDING

\$ 1,530,000 Capital Funding





City of Boston
Priorities

Safety Guidelines+
Regulatory
Guidelines

**PARK
DESIGN**

Parks + Recreation
Goals

Community
Input

THE **5** ELEMENTS OF PLAY



SOCIAL/ EMOTIONAL

COOPERATION, DRAMATIC +
IMAGINATIVE PLAY



SEATING + TABLE AREAS,
THEMATIC PLAY ELEMENTS
(SHIPS), PLAY HOUSES

PHYSICAL

GROSS MOTOR/ FINE MOTOR SKILLS,
FLEXIBILITY, ACCESSIBILITY,
HEALTHY RISK + VARIETY



DISH SWINGS, MOVEABLE
OBJECTS, SWINGS, MONKEY
BARS, BALANCE

SENSORY

TOUCH, VISUAL, AUDITORY, SMELL
VESTIBULAR, PROPRIOCEPTIVE +
INTEROCEPTIVE



PUSH/ PULL ELEMENTS
WATER ELEMENTS, VARIED
TEXTURES + COLORS, SPINNING,
MOVEABLE OBJECTS, ROCKING

COGNITIVE

CREATIVITY, SENSE OF
ACCOMPLISHMENT, PROBLEM-
SOLVING, CAUSE + EFFECT, RISK
ASSESSMENT



INTERACTIVE WATER
ELEMENTS, ROPE CLIMBER,
LINKED PLAY ELEMENTS

COMMUNICATION

DEVELOPMENT OF RECEPTIVE +
EXPRESSIVE LANGUAGE



TALK TUBES, SLIDES, THEMATIC
PLAY ELEMENTS, TRIKE TRACK,
SEE SAWS

PROJECT TEAM

Nathan Frazee

Project Manager

Nathan.frazee@boston.gov or 617-961-3167

Christine Brandao

Outreach Coordinator, External Affairs

christine.brandao@boston.gov or 617-961-3006

Cheri Ruane, FASLA, RLA

Practice Leader, Landscape Architecture
Weston & Sampson

Cassie Bethoney, RLA

Senior Landscape Architect and Project Manager
Weston & Sampson



WHAT WE HEARD AT PUBLIC MEETING #1

- “Preserve the flavor of the playground” – the park’s aesthetic should fit seamlessly into the neighborhood (e.g. no lighting, natural color scheme, green and open)
- Kids of all ages use the park and the local schools bring students to the park on a coordinated schedule for play. The play equipment needs to be able to handle rigorous use from all ages and construction should work around the school year schedule.
- The open play area is extremely important and central to this space as a freeform play area and community space for neighborhood events.
- City kids have little access to nature itself, so keeping the existing natural elements - vegetation, trees, ground level discovery areas tactile play – is critical.

WHAT WE HEARD

All plantings will need to be bullet proof and tough for active play, but need to maintain visibility from the street

Improvements must incorporate stroller parking closer to play

Move park's memorial plaque to a more prominent location.

Designated stroller parking is a must have, off the main circulation route

Granite block to be repurposed as natural play and seating elements to create cohesive natural play spaces



WHAT WE HEARD



Preserve established tree canopy throughout

Repurpose granite for seating and play



Incorporate The Learning Project's etched stones.

Be sensitive to park edge at 109 Commonwealth Ave



Provide ample seating for parents, caregivers, teachers and supervisors at each play area

Improve drainage in this area; preserve open play within the park.



WHAT WE HEARD



Provide accessible play elements and swings



Ensure compliant play surfacing (fixed)



Maintain and incorporate interior seat wall

Ensure each piece of play equipment provides many kinds of play value

Maintain sensory play elements that are open and freeform

OVERALL CONSIDERATIONS

- Strengthen the edge planting with hardy understory vegetation
- Incorporate synthetic turf in Open Play areas with the look and feel of real grass



- Provide a wide variety of seating options
- Poured-in-place rubber will have a natural color scheme



CONCEPT A: "Discovery Loop"



CONCEPT A: "Discovery Loop"



COMMONWEALTH AVENUE (OUTBOUND)

CONCEPT A: "Discovery Loop"



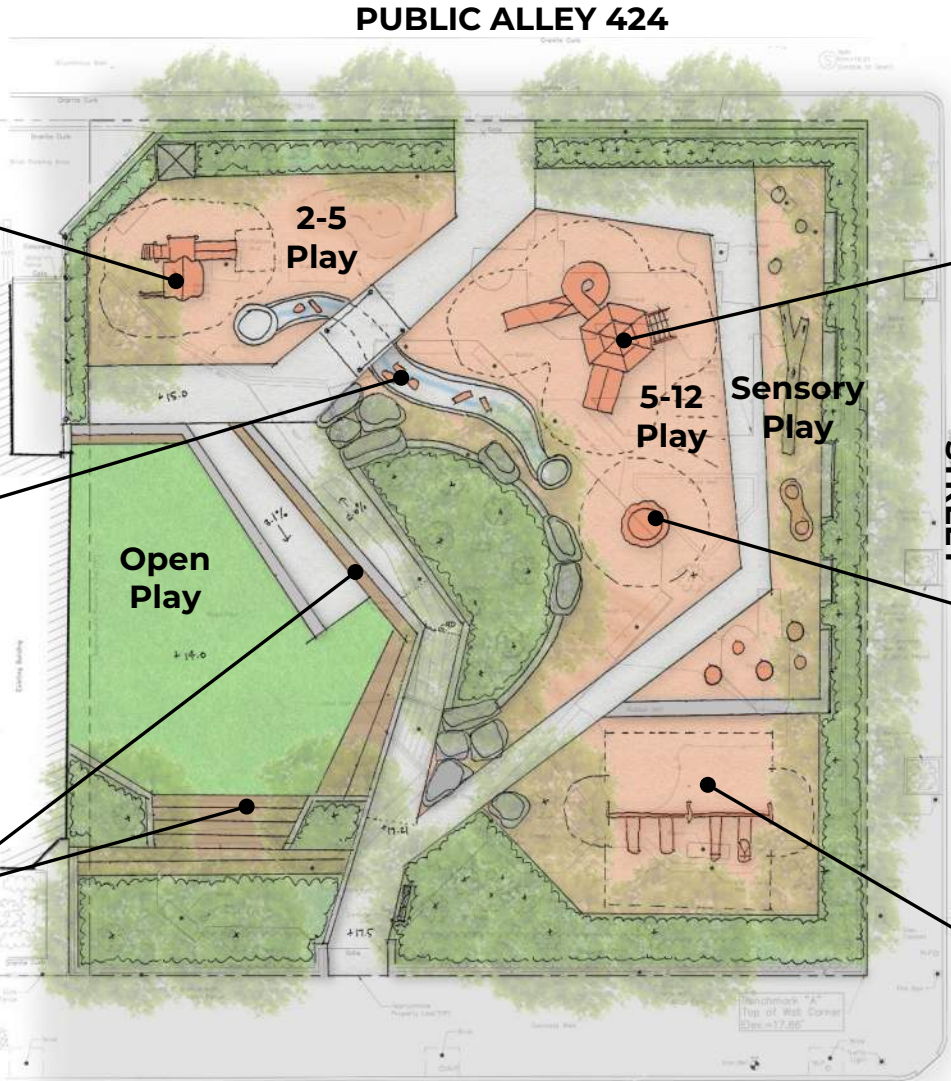
Stroller Parking

COMMONWEALTH AVENUE (OUTBOUND)

CLARENDON STREET

PUBLIC ALLEY 424

CONCEPT B: "The Enchanted Forest"



CONCEPT B: "The Enchanted Forest"



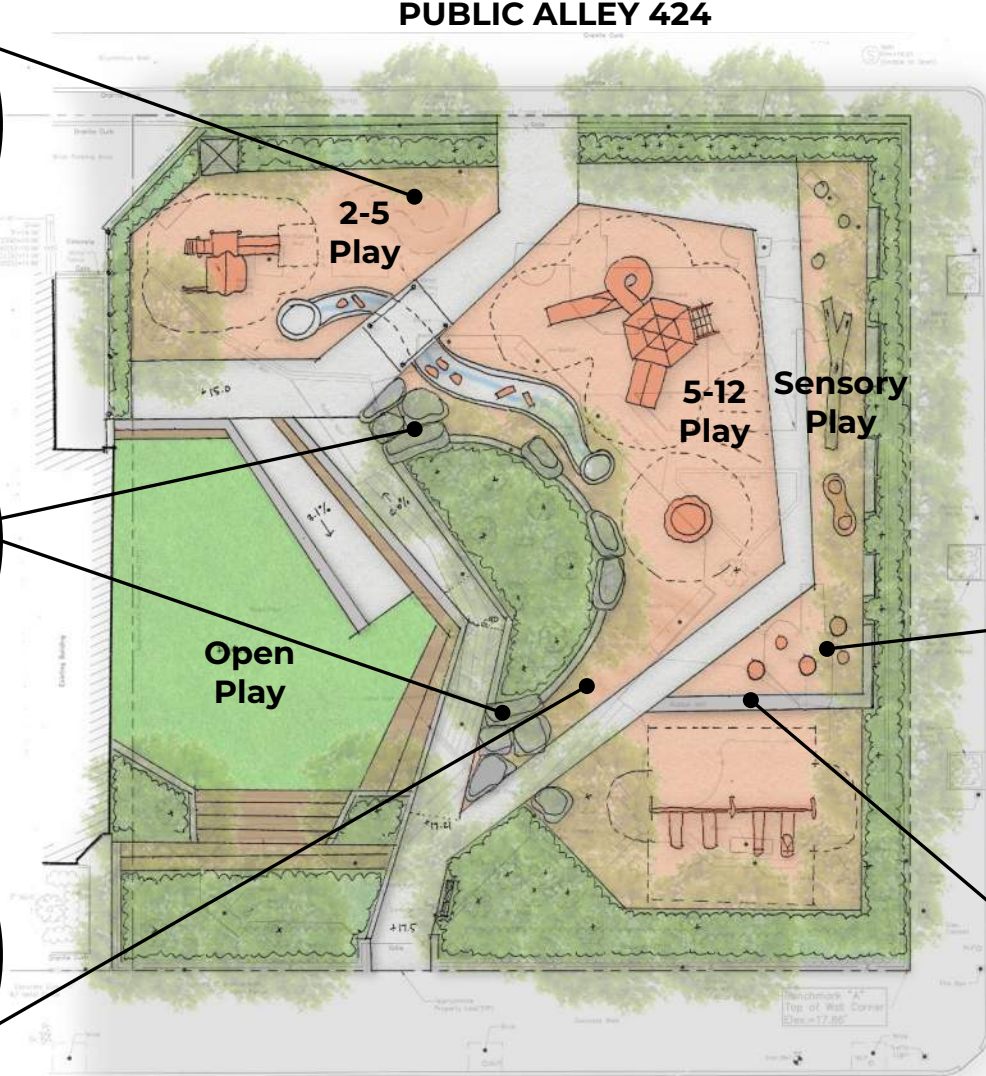
Climbing Mounds



Climbing Boulders



Undulating Mounds



Sensory Logs

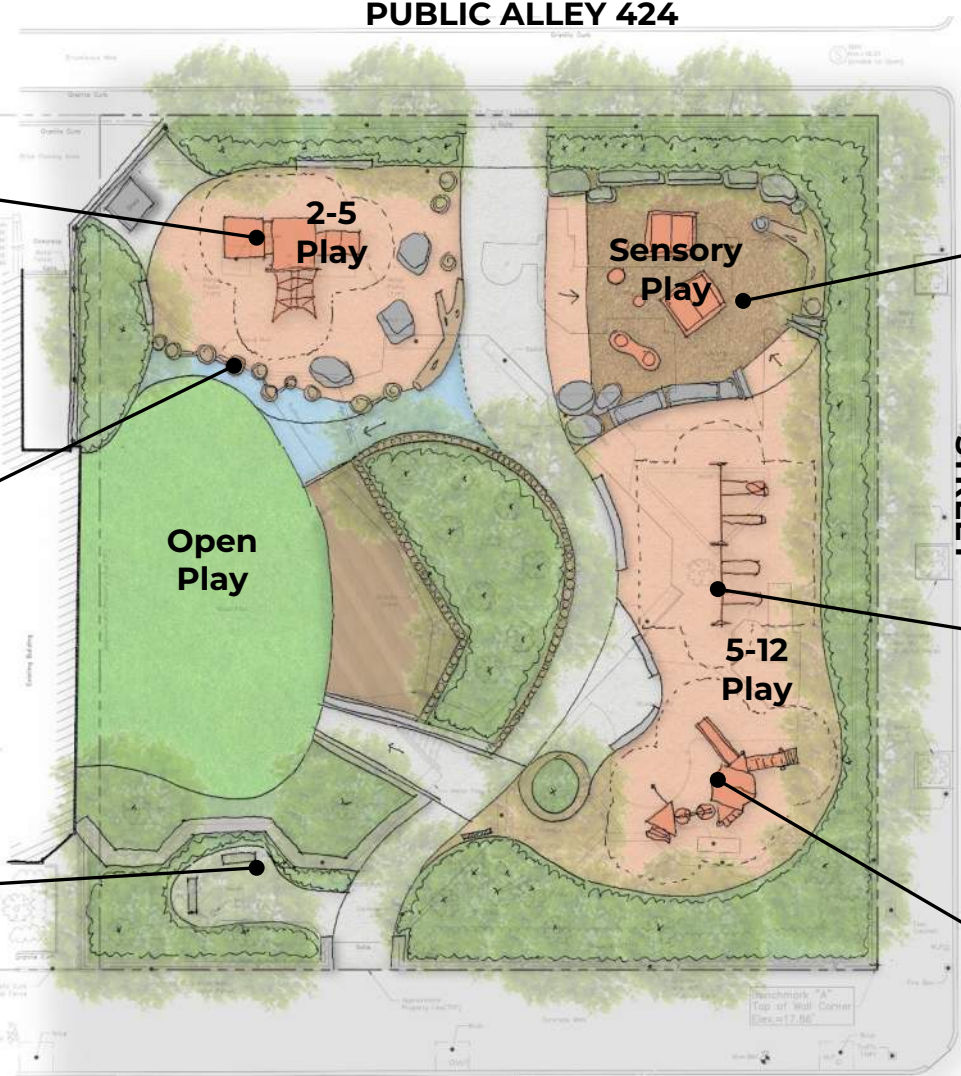


Stepping Stumps



Natural Stone Seat Walls

CONCEPT C: "The Landing"



COMMONWEALTH AVENUE (OUTBOUND)

CLARENDON STREET

CONCEPT C: "The Landing"





LISTENING & DISCUSSION

Help us build great parks.
Let us know what matters to you.

CONCEPT A

CONCEPT B

CONCEPT C





THANK YOU!

Next Meeting TBD

For questions, maintenance requests or concerns regarding any of our parks contact 311



February 24th, 2021
Boston Parks and Recreation

