

# Franklin Park Zoo

## Entry & Penguin Exhibit



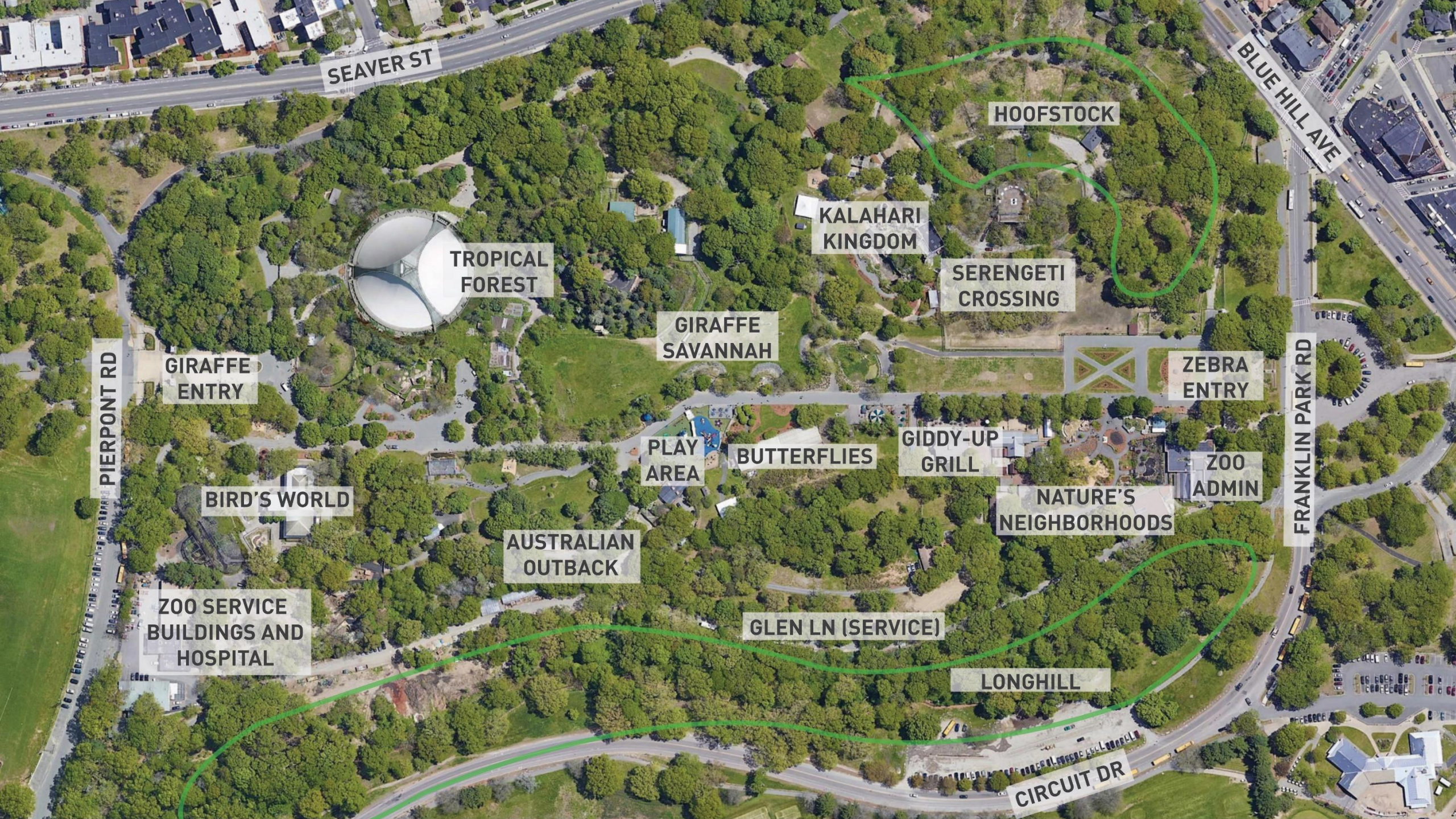
# Previous Suggestions

- Review:
  - Landmarks Commission's approved 1980 Revised General Plan for Franklin Park
  - 1976 Environmental Impact Report for the Franklin Park Zoo Master Plan
- Provide:
  - Expand design base to show context within zoo and relationship to The Greeting element
  - Define design parameters of a modern zoo entry complex
  - Show committee more alternatives for the design of the new zoo entry complex
- Design Suggestions:
  - Explore bringing more organic design shapes from zoo interior to zoo entry exterior
  - Explore bringing more historically rigid geometric design shapes from exterior zoo entry into zoo interior
  - Maintain visual vista volume remnant of The Greeting within zoo to honor Olmsted landscape concept
- Coordinate:
  - Continue to coordinate zoo design needs and requirements with the ongoing Franklin Park Master Plan









SEAVER ST

BLUE HILL AVE

HOOFSTOCK

KALAHARI KINGDOM

SERENGETI CROSSING

TROPICAL FOREST

GIRAFFE SAVANNAH

ZEBRA ENTRY

GIRAFFE ENTRY

PIERPONT RD

PLAY AREA

BUTTERFLIES

GIDDY-UP GRILL

ZOO ADMIN

BIRD'S WORLD

NATURE'S NEIGHBORHOODS

AUSTRALIAN OUTBACK

ZOO SERVICE BUILDINGS AND HOSPITAL

GLEN LN (SERVICE)

LONGHILL

FRANKLIN PARK RD

CIRCUIT DR







**KALAHARI  
KINGDOM**

**SERENGETI  
CROSSING**

**WATTLED  
CRANE**

**REMNANT GREETING**

**ZOO  
ENTRY**

**GIDDY-UP  
GRILL**

**NATURE'S  
NEIGHBORHOODS**

**ZOO ADMIN**







later integral feature - historic north gate





later integral feature - historic fence







later integral feature - historic south gate





boston lights entry installation





ZEBRA ENTRANCE

ENTER HERE

ENTER HERE

ZOO RULES

Map and informational sign for the zoo.

existing ticketing booth





BRICK SAFARI  
Stone Zoo

Directional signs with animal photos and text.

ZOO MAPS

'greeting' meadow



# Guiding Principles



## HONOR & ITERATE ON SITE HISTORY

- » Honor the central view and maintain importance of choreographed views
- » Maintain the existing historic portals and fence line
- » Restore and honor original tree allées



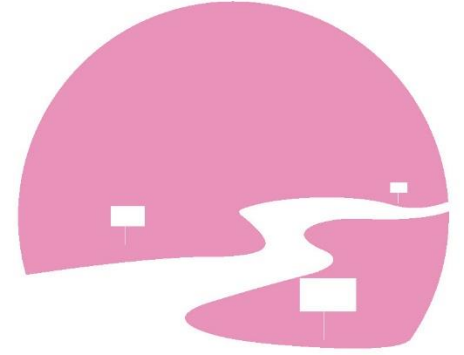
## INTEGRATE FUNCTIONS OF A MODERN ZOO

- » Create an arrival and circulation sequence that maximizes visitor experience to meet goal of the zoo to increase visitorship to 1.5 million annually
- » Prioritize forms and design for requirements of animal exhibits



## PROVIDE AN INCLUSIVE FRONT YARD

- » Create a welcoming, inclusive space that celebrates the many cultures, ages, and languages of the community
- » Provide an engaging feature that captures attention and compliments the character of both Franklin Park and the Zoo

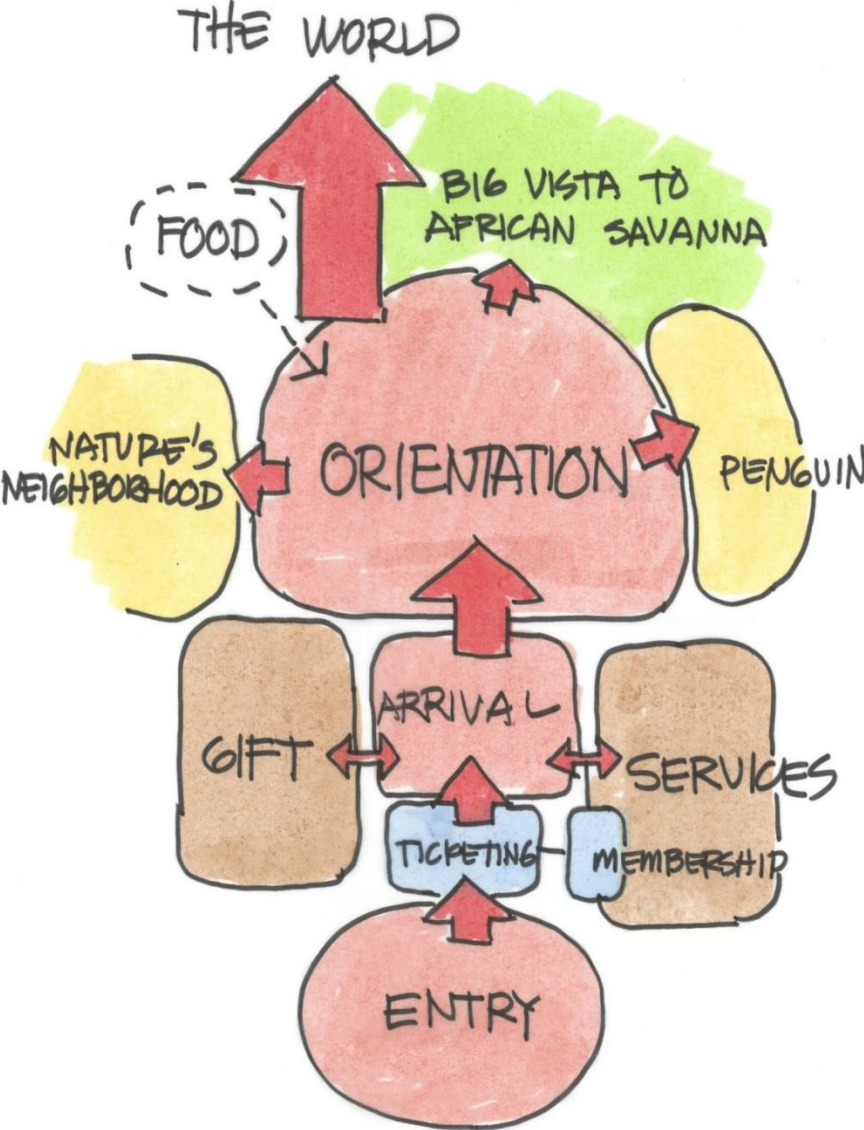


## FACILITATE INTUITIVE & SAFE ACCESS

- » Establish traffic calming along Franklin Park Road to create a welcoming and protected experience at pedestrian access points
- » Provide safe lighting levels at night and quality wayfinding



# Successful Zoo Entry Relationships









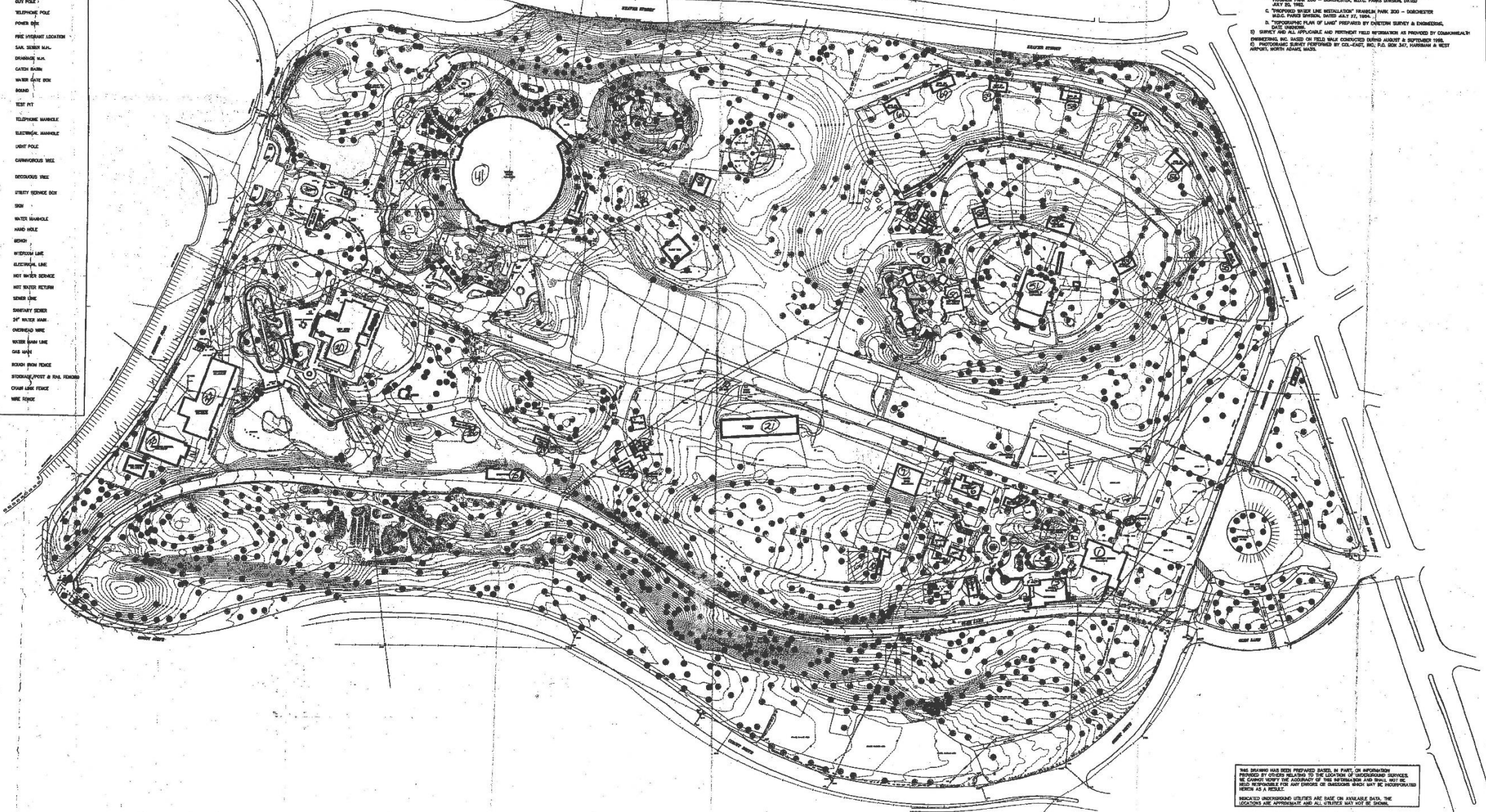








- CONTOURS
- SPOT ELEVATIONS
- STONE WALL
- BOUND WALL
- PROPERTY LINE
- EDGE OF ROAD WITH CURB
- EDGE OF ROAD, NO CURB
- STONE CURB
- GUT POLE
- TELEPHONE POLE
- POWER POLE
- FIRE HYDRANT LOCATION
- SAN. SEWER MAN.
- DRAINAGE MAN.
- CATCH BASIN
- WATER GATE BOX
- ROAD
- TEST PIT
- TELEPHONE MARKER
- ELECTRICAL MARKER
- LIGHT POLE
- CARNIVOROUS HOLE
- INCUBATOR HOLE
- UTILITY SERVICE BOX
- SOIL
- WATER MARKER
- HAND HOLE
- WELL
- WATERPUMP LINE
- ELECTRICAL LINE
- HOT WATER SERVICE
- HOT WATER RETURN
- SEWER LINE
- SEWER MANHOLE
- 24" WATER MAIN
- OVERHEAD WIRE
- WATER MAIN LINE
- GAS MAIN
- ROUND IRON FENCE
- STORAGE POST & IRON FENCING
- CHAIN LINK FENCE
- WIRE FENCE



1) UTILITY LOCATIONS SHOWN ARE APPROXIMATE AND SHALL BE VERIFIED BY THE CONTRACTOR IN THE FIELD. THE SAID LINES SHALL BE KEPT BY THE CONTRACTOR SHALL GUARANTEE THE CONSTRUCTION ACTIVITIES NEAR UTILITY LOCATIONS WITH THE RESPECTIVE UTILITY REPRESENTATIVE.

2) MAPPING LIMITS BASED ON M.L.C. FRANKLIN PARK ZOO, "PROPOSED ZOO DEVELOPMENT AREA" SHEET 2 OF 4 DATED MARCH 29, 1978.

3) ALL UNDERGROUND UTILITIES SHOWN WERE COMPILED ACCORDING TO AVAILABLE RECORD PLANS FROM THE VARIOUS UTILITY COMPANIES AND PUBLIC AGENCIES AND ARE APPROXIMATE ONLY. ACTUAL LOCATIONS MUST BE DETERMINED BY THE FIELD SERVICE ENGINEER. ELECTRICAL, ELECTRONIC, AND PRIVATE LINES BE CONSTRUCTED SUBJECT TO THE CONTROL OF UTILITIES NOT SHOWN ON THIS PLAN. THE CONTRACTOR SHALL BE RESPONSIBLE FOR ANY DAMAGE INCURRED AS A RESULT OF UTILITIES NOT SHOWN OR INCORRECTLY SHOWN. BEFORE PLACING FINAL ACTIVITIES, AS THE APPROPRIATE PUBLIC UTILITY AGENCIES' APPROVATION MUST BE OBTAINED.

4) UTILITIES SHOWN BASED IN PART FROM:

- A. "TOPOGRAPHIC PLAN OF LAND" M.L.C. MARSHFIELD FACILITY, CANTERBURY, VERMONT, DATED MARCH 29, 1978.
- B. "SEWER AND DRAIN LINES CLEANED, REPAIRED OR ADJUSTED RECORD PLAN" FRANKLIN PARK ZOO - DORCHESTER, MASS. - PAVED DIVISION, DATED JULY 30, 1962.
- C. "PROPOSED WATER LINE INSTALLATION" FRANKLIN PARK ZOO - DORCHESTER, MASS. PAVED DIVISION, DATED JULY 30, 1962.
- D. "TOPOGRAPHIC PLAN OF LAND" PREPARED BY QUINCY SURVEY & ENGINEERING, DATED MARCH 29, 1978.
- E. "SITE AND AS-BUILT AND PREVIOUS FIELD REVISIONS" AS PROVIDED BY COMMONWEALTH ENGINEERING, INC. BASED ON FIELD NOTES COLLECTED DURING AUGUST & SEPTEMBER 1969.
- F. "PHOTOGRAPHIC SURVEY" PERFORMED BY COL-CAP, INC. P.O. BOX 347, HARRISMAN & WEST AVENUE, NORTH ANDAMAS, MASS.

FRANKLIN PARK ZOO  
BOSTON, MASS.

EXISTING CONDITIONS PLAN  
ROLL PLAN

PREPARED FOR  
ZOO NEW ENGLAND  
FRANKLIN PARK ZOO  
149 POWD STREET

27 CAMBRIDGE STREET  
FRANKLIN PARK ZOO  
FRANKLIN PARK ZOO

COMMONWEALTH  
ENGINEERING  
INC.



SCALE  
1" = 80'



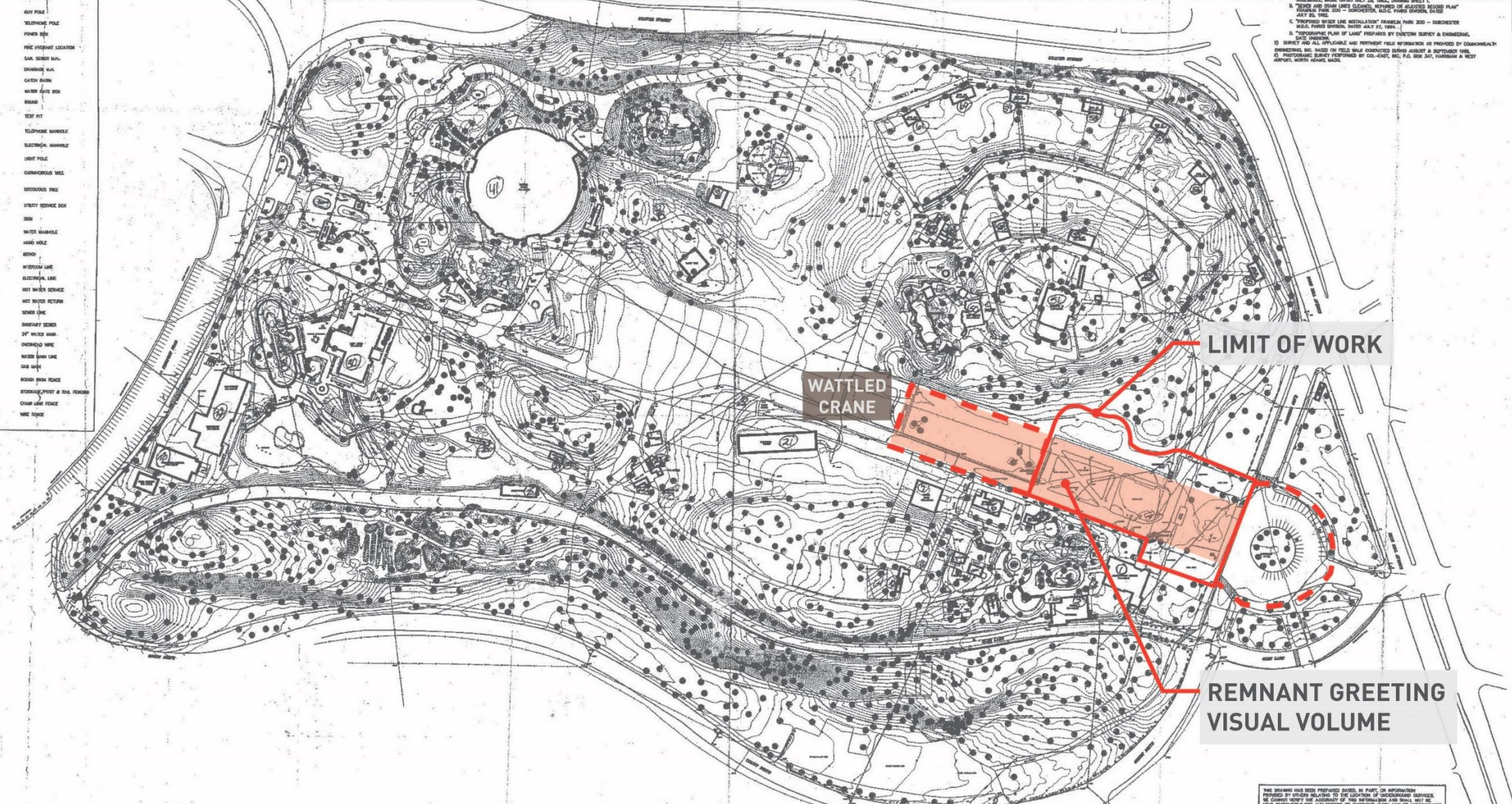
NO.	DATE	BY	CHKD.	DATE	BY	CHKD.

THE DRAWING HAS BEEN PREPARED BASED IN PART ON INFORMATION PROVIDED BY OTHERS RELATIVE TO THE LOCATION OF UNDERGROUND SERVICES. THE CONTRACTOR SHALL BE RESPONSIBLE FOR VERIFYING THE LOCATION AND DEPTH OF ALL UTILITIES. THE CONTRACTOR SHALL BE RESPONSIBLE FOR ANY DAMAGE INCURRED AS A RESULT OF UTILITIES NOT SHOWN OR INCORRECTLY SHOWN. BEFORE PLACING FINAL ACTIVITIES, AS THE APPROPRIATE PUBLIC UTILITY AGENCIES' APPROVATION MUST BE OBTAINED.

NOTED: THESE DRAWINGS SHOULD BE USED BEFORE USING DRAWINGS.



- CONTOURS
- SPOT ELEVATIONS
- STONE WALL
- GRAVEL LAKE
- PROPERTY LINE
- EDGE OF ROAD WITH CURB
- EDGE OF ROAD, NO CURB
- STONE CURB
- RAIL FENCE
- TELEPHONE POLE
- POWER POLE
- FIRE HYDRANT LOCATION
- SAN SEWER MAN.
- DRAINAGE MAN.
- CATCH BASIN
- WATER GATE BOX
- ROAD
- REST PIT
- TELEPHONE MARKER
- ELECTRICAL MARKER
- LIGHT POLE
- CARNIVOROUS MISC.
- HERBIVOROUS MISC.
- UTILITY SERVICE BOX
- SOIL
- WATER MARKER
- HAND HOLE
- WELL
- WATERMILL LAKE
- ELECTRICAL LAKE
- HOT WATER SERVICE
- HOT WATER RETURN
- SEWER LINE
- SEWER SERVICE
- 24" WATER MAIN
- OVERHEAD WIRE
- WATER MAIN LINE
- GAS MAIN
- ROCKY BROWN FENCE
- STORAGE/POST & RAIL FENCING
- CHAIN LINK FENCE
- WIRE FENCE



**LIMIT OF WORK**

**WATTLED CRANE**

**REMNANT GREETING VISUAL VOLUME**

1) UTILITY LOCATIONS SHOWN ARE APPROXIMATE AND SHALL BE VERIFIED BY THE CONTRACTOR IN THE FIELD. THE OWNER HAS BEEN ADVISED BY THE CONTRACTOR THAT UNDERGROUND CONSTRUCTION ACTIVITIES NEAR UTILITY LOCATIONS WITH THE PROPOSED UTILITY RECONSTRUCTION.

2) MAPPING LIMITS BASED ON M.D.C. FRANKLIN PARK ZOO, "PROPOSED ZOO DEVELOPMENT AREA" SHEET 2 OF 4 DATED MARCH 28, 1978.

3) ALL UNDERGROUND UTILITIES SHOWN WERE COMPILED ACCORDING TO AVAILABLE RECORD PLANS FROM THE VARIOUS UTILITY COMPANIES AND PUBLIC AGENCIES AND ARE APPROXIMATE ONLY. ACTUAL LOCATIONS MUST BE DETERMINED IN THE FIELD BY THE CONTRACTOR. CONTRACTOR SHALL BE RESPONSIBLE FOR VERIFYING THE LOCATION OF ALL UTILITIES. CONTRACTOR SHALL BE RESPONSIBLE FOR VERIFYING THE LOCATION OF ALL UTILITIES. CONTRACTOR SHALL BE RESPONSIBLE FOR VERIFYING THE LOCATION OF ALL UTILITIES. CONTRACTOR SHALL BE RESPONSIBLE FOR VERIFYING THE LOCATION OF ALL UTILITIES.

4) UTILITIES SHOWN BASED IN PART FROM:

- A. "RECORDING PLAN OF LAND" M.D.C. WASHINGTON FACILITY, CAMBRIDGE STREET, BOSTON, MASS. DATED JULY 28, 1962, DRAWING SHEET 1.
- B. "SEWER AND DRAIN LINES CLEANED, REPAIRED OR ADJUSTED RECORD PLAN" FRANKLIN PARK ZOO - DORCHESTER, MASS. DATED JULY 28, 1962.
- C. "PROPOSED WIRE LINE INSTALLATION" FRANKLIN PARK ZOO - DORCHESTER, MASS. PARISH DIVISION, DATED MAY 27, 1964.
- D. "PROPOSED PLAN OF LAND" PREPARED BY GEORGE SURVEY & ENGINEERING, DATED JANUARY 1964 AND PREVIOUS FIELD SURVEYS AS PROVIDED BY COMMONWEALTH ENGINEERING, INC. BASED ON FIELD SURVEY CONDUCTED DURING AUGUST & SEPTEMBER 1963.
- E. PHOTOGRAPHIC SURVEY PERFORMED BY COL-KAY, INC. P.O. BOX 347, HARRISMAN A WEST AVENUE, BOSTON, MASS.

FRANKLIN PARK ZOO  
BOSTON, MASS.

EXISTING CONDITIONS PLAN  
ROLL PLAN

PREPARED FOR  
ZOO NEW ENGLAND  
FRANKLIN PARK ZOO  
149 POND STREET

27 CAMBRIDGE STREET  
CAMBRIDGE, MASS. 02142  
(617) 552-2000

COMMONWEALTH  
ENGINEERING  
INC.

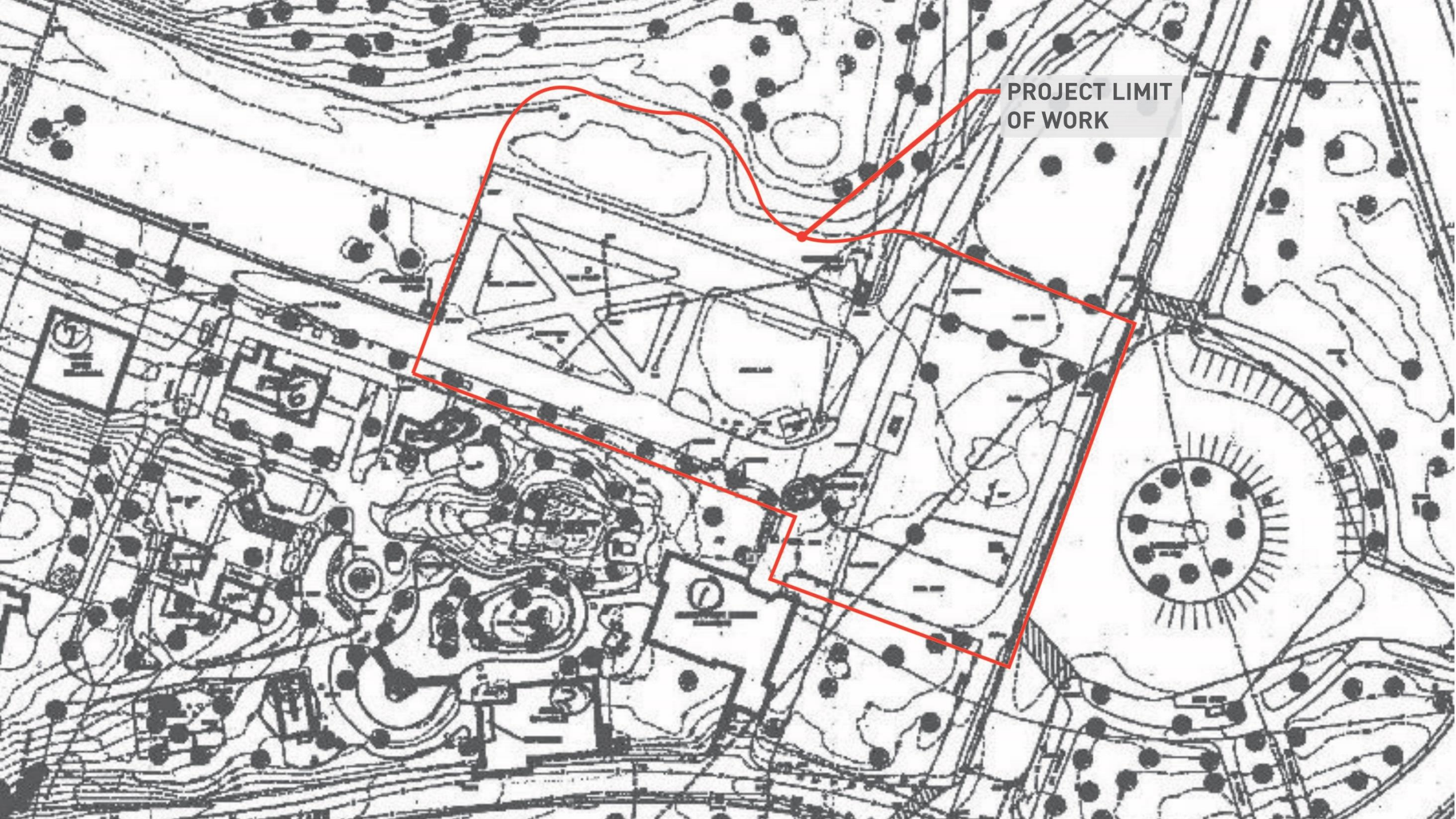
SCALE  
1" = 80'

DATE  
DRAWN  
CHECKED  
DATE  
DRAWN  
CHECKED

THIS DRAWING HAS BEEN PREPARED BASED, IN PART, ON INFORMATION PROVIDED BY OTHERS RELATIVE TO THE LOCATION OF UNDERGROUND SERVICES. CONTRACTOR SHALL BE RESPONSIBLE FOR VERIFYING THE LOCATION OF ALL UTILITIES. CONTRACTOR SHALL BE RESPONSIBLE FOR VERIFYING THE LOCATION OF ALL UTILITIES. CONTRACTOR SHALL BE RESPONSIBLE FOR VERIFYING THE LOCATION OF ALL UTILITIES.

NOTED: THESE DRAWINGS SHOULD BE USED BEFORE USING DRAWINGS





PROJECT LIMIT  
OF WORK







AFRICA EXPANSION

PENGUIN EXHIBIT



WATERHOLE

ARBOUR

PENGUIN

PENGUIN N.H.

HOOPOCK

SMALL MAMMAL

LSS

ORIENTATION PLAZA

ARRIVAL

TICKETING

PORTAL TO THE WORLD

NEW PANDA DAY ROOM

ENTRY PLAZA

HISTORIC GATE

ENTRY PORTAL

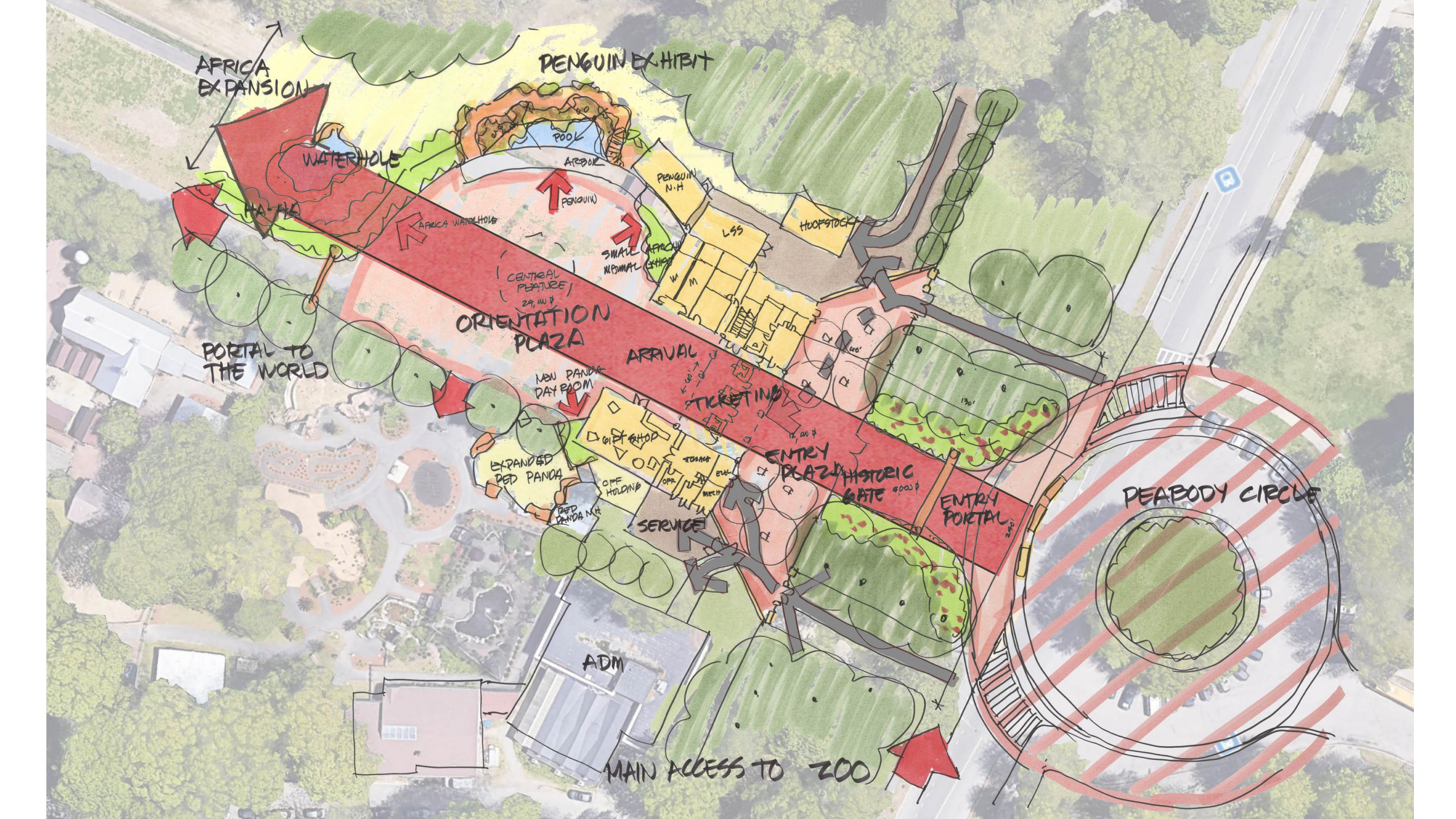
EXPANDED RED PANDA

SERVICE

PEABODY CIRCLE

ADM

MAIN ACCESS TO ZOO



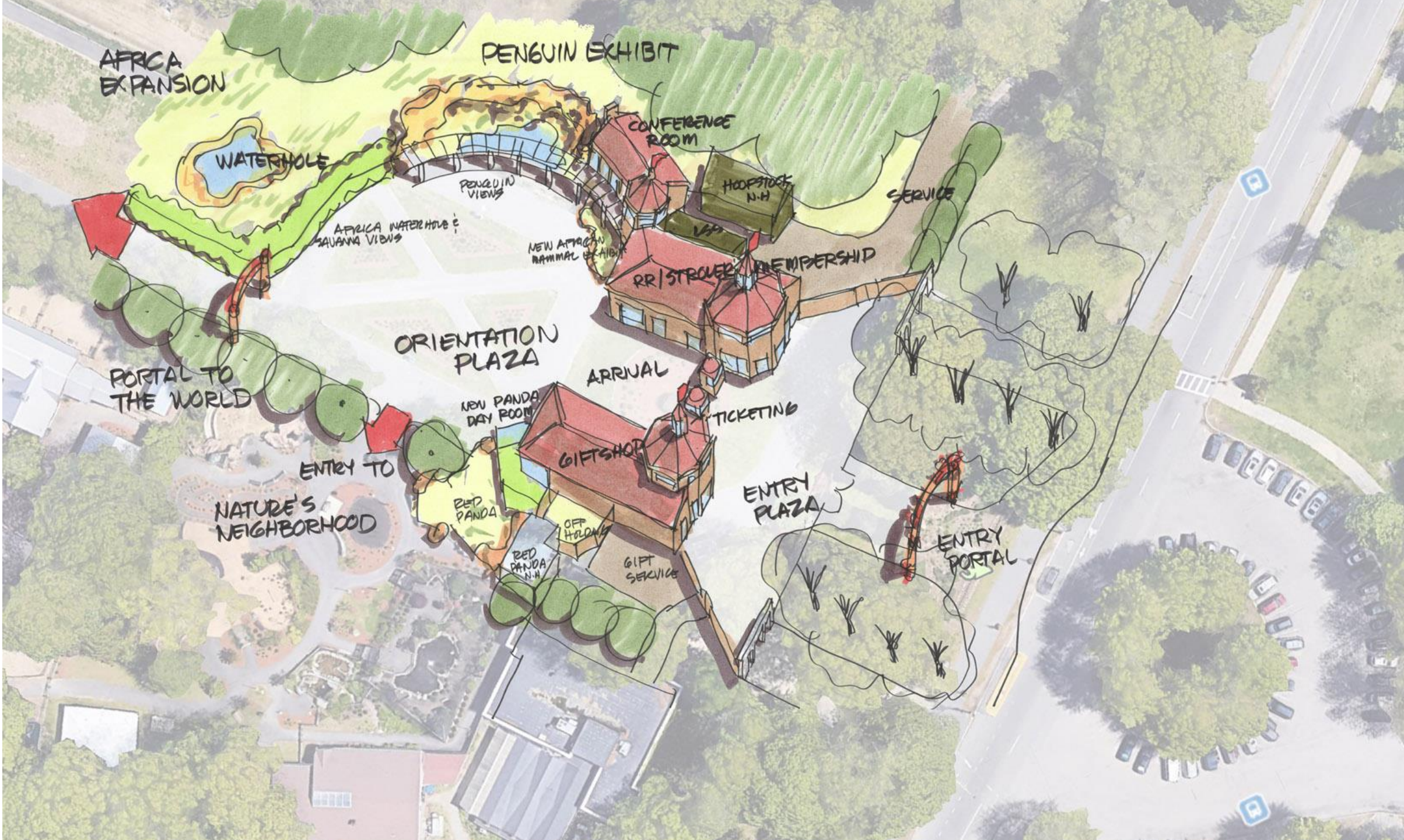




NEW CENTER  
WALKWAY  
40'







AFRICA EXPANSION

PENGUIN EXHIBIT

WATERHOLE

CONFERENCE ROOM

PENGUIN VIEWS

HOOPSTOCK N.H.

SERVICE

AFRICA WATERHOLE & SAVANNA VIEWS

NEW AFRICAN MAMMAL EXHIBIT

VIP

RR/STROUPE MEMBERSHIP

ORIENTATION PLAZA

ARRIVAL

PORTAL TO THE WORLD

NEW PANDA DAY ROOM

TICKETING

ENTRY TO

NATURE'S NEIGHBORHOOD

RED PANDA

GIFTSHOP

ENTRY PLAZA

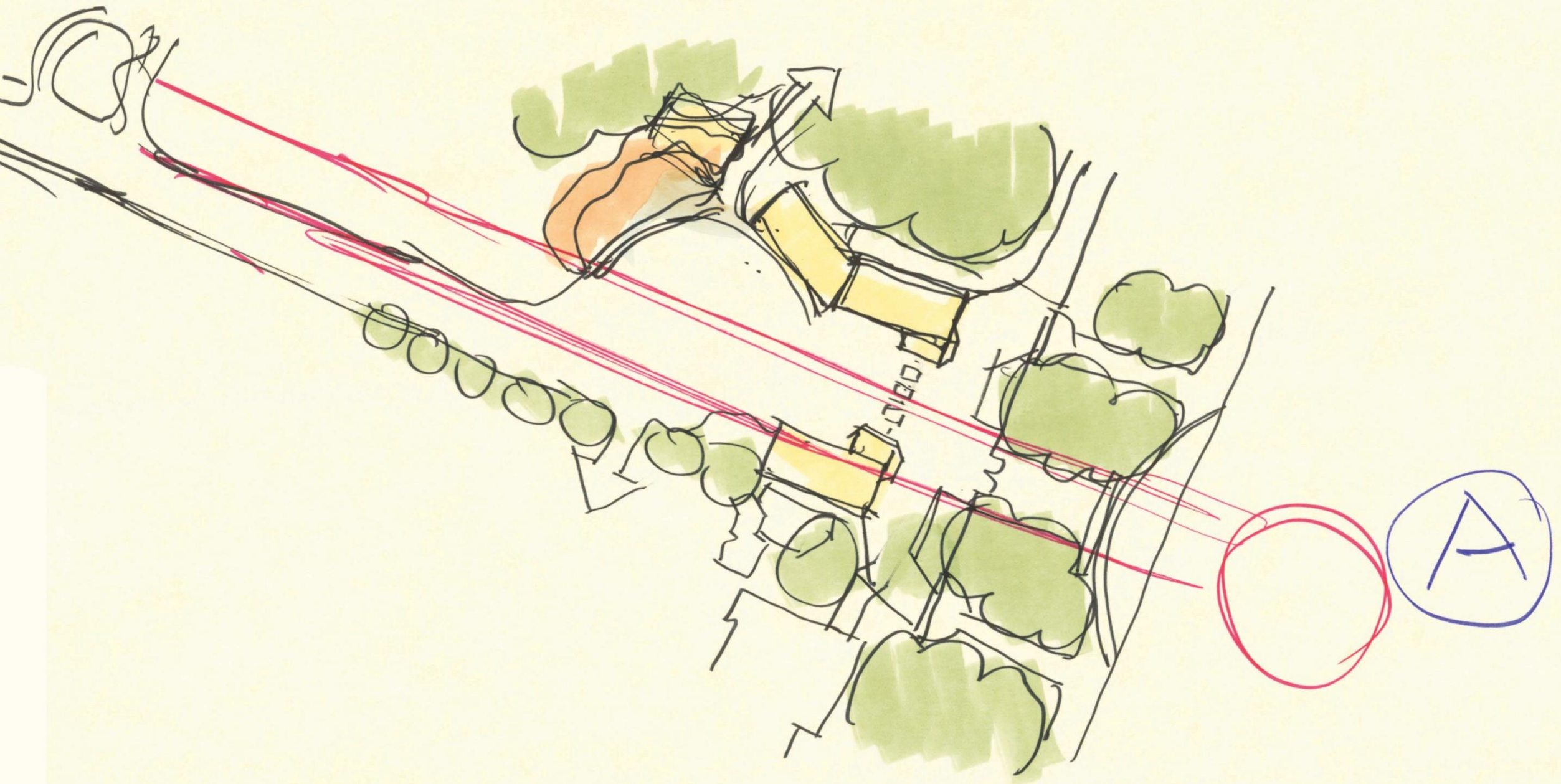
RED PANDA N.H.

OFF HOURS

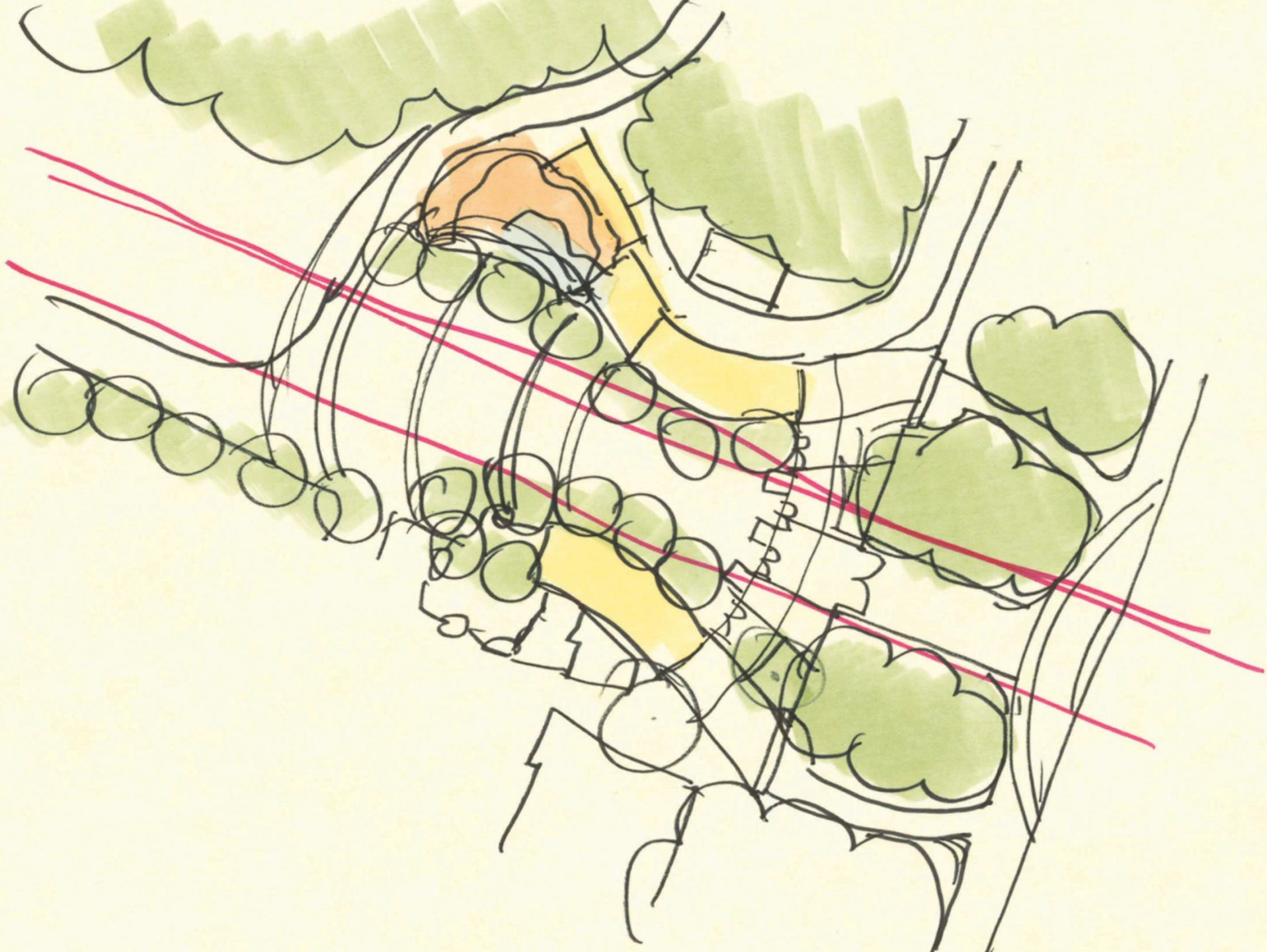
GIFT SERVICE

ENTRY PORTAL



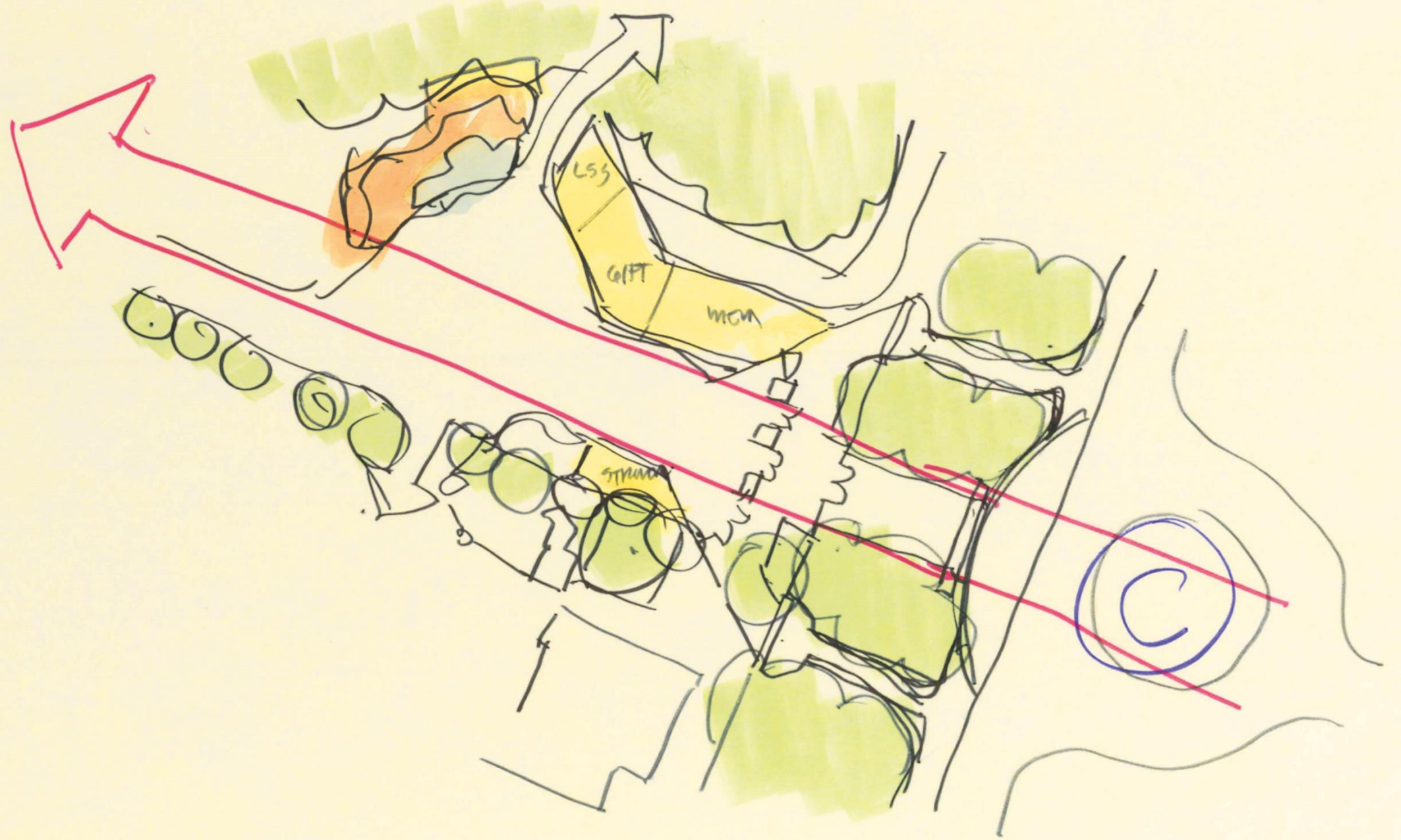






B







# OPTION 1: BOOK ENDS W/ PORTAL

## ALTERNATE VIEWS



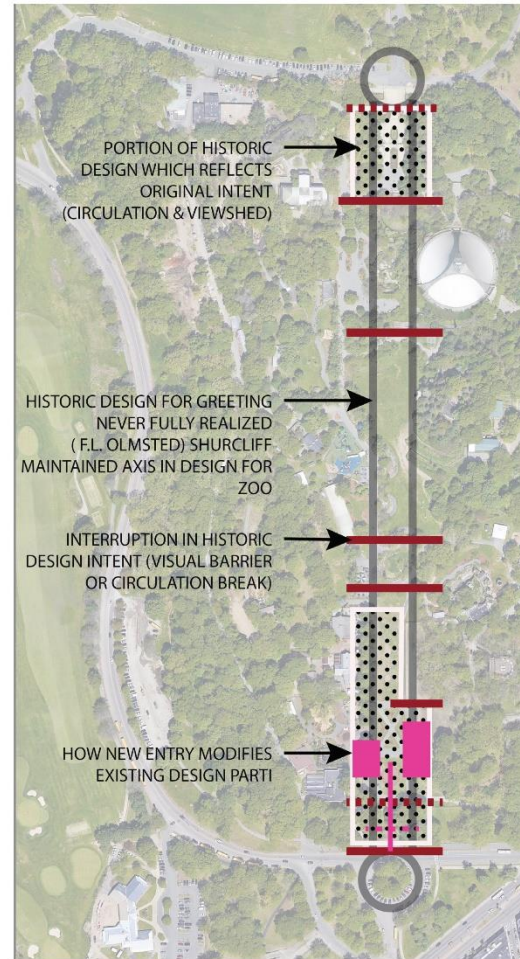
## PROS:

- PORTAL BRINGS ATTENTION TO THE STREET
- MAINTAINS SHURCLIFF "PROSPECT"
- HISTORIC MASSING OF BUILDINGS BASED ON 1914 SHURCLIFF PLAN

## CONS:

- REDUNDANT PORTALING
- STILL NEED TO ATTRACT PEOPLE TO CENTER GREETING FROM "APPROACH"

## DIAGRAM OF THE GREETING



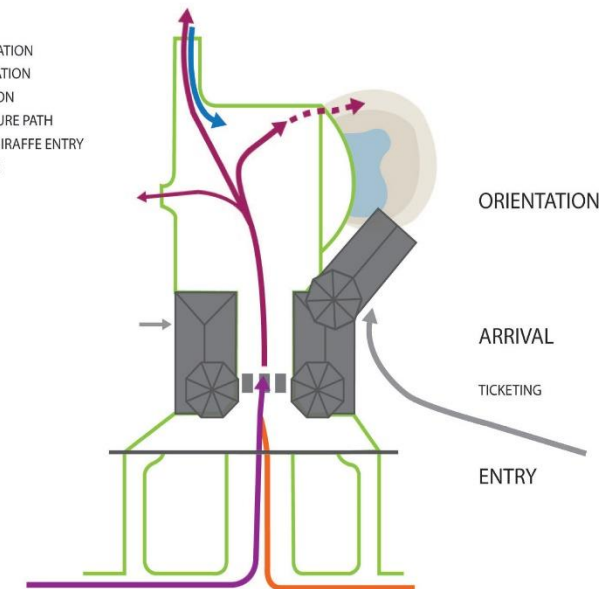
## MASSING STUDY FROM FRONT



## DIAGRAM

### LEGEND

- PAVING
- VISITOR CIRCULATION
- GROUP CIRCULATION
- ZOO CIRCULATION
- - - PROPOSED FUTURE PATH
- GUESTS FROM GIRAFFE ENTRY
- SERVICE ACCESS









# OPTION 2: TAPERED BOOK ENDS

ALTERNATE VIEWS



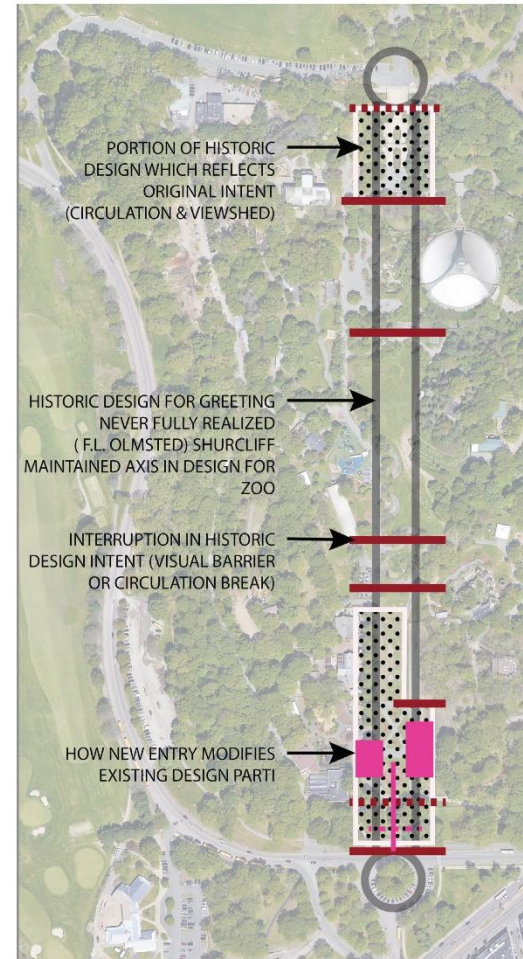
PROS:

- WIDER BUILDINGS ARE MORE INVITING AND ACCENTUATE THE DESIGN AXIS
- WIDER NORTH BUILDING APPEARS MORE PROMINENT IN THE APPROACH
- NON-RECTILINEAR BUILDINGS ADD COST

CONS:

- ORIENTATION PLAZA TRANSITION IS VERY FORMAL WITH NO TRANSITION

DIAGRAM OF THE GREETING



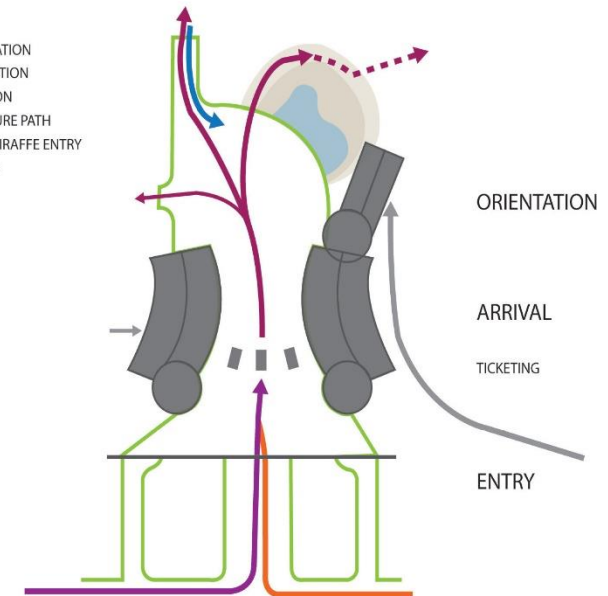
MASSING STUDY FROM FRONT



DIAGRAM

LEGEND

- PAVING
- VISITOR CIRCULATION
- GROUP CIRCULATION
- ZOO CIRCULATION
- - - PROPOSED FUTURE PATH
- GUESTS FROM GIRAFFE ENTRY
- SERVICE ACCESS





# OPTION 3: HISTORIC PRESENCE (RICHARDSONIAN)

ALTERNATE VIEWS



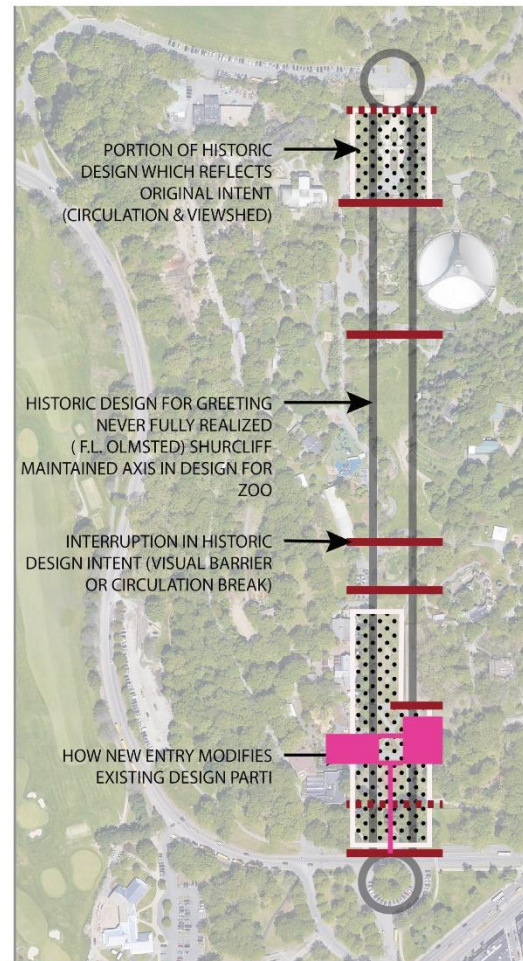
PROS:

- HISTORIC FORM APPEALS TO HISTORIC SENSIBILITIES
- SINGLE BUILDING FOOTPRINT REDUCES COST BASED ON ECONOMY OF SCALE
- CENTRAL ENTRY SPINE HONORS GREETING
- MONUMENTAL QUALITY ATTRACTS ATTENTION

CONS:

- 3 ENTRY WAYS ARE CONFUSING
- SINGLE BUILDING INTERRUPTS OLMSTED'S CONCEPT OF THE GREETING

DIAGRAM OF THE GREETING



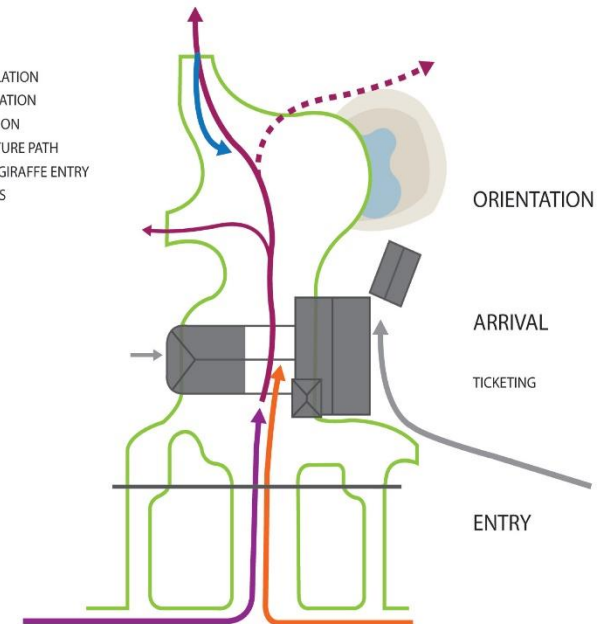
MASSING STUDY FROM FRONT



DIAGRAM

LEGEND

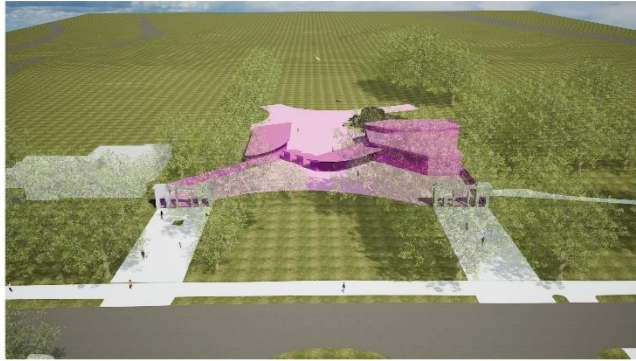
- PAVING
- VISITOR CIRCULATION
- GROUP CIRCULATION
- ZOO CIRCULATION
- - - PROPOSED FUTURE PATH
- GUESTS FROM GIRAFFE ENTRY
- SERVICE ACCESS





# OPTION 4: SITE RESPONSIVE (AIRFOIL)

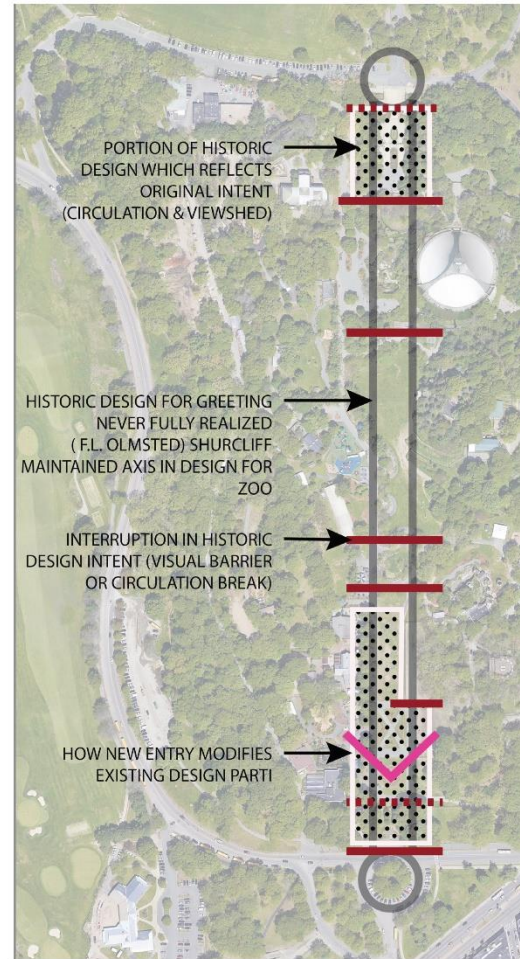
ALTERNATE VIEWS



- PROS:
- MASS MOVES AWAY REDUCING WEIGHT AT STREET
  - TICKETING TURNS TO ADDRESS CIRCULATION
  - REUSE OF EXISTING PORTALS REDUCES COST
  - USE OF FIRST HISTORIC PORTAL RELIEVES THE REQUIREMENT TO LEAD VISITOR TO A CENTER SPINE

- CONS:
- MASSING LENDS ITSELF TO CONTEMPORARY FORMS
  - NO NEW "PORTAL" TO ATTRACT USERS

DIAGRAM OF THE GREETING



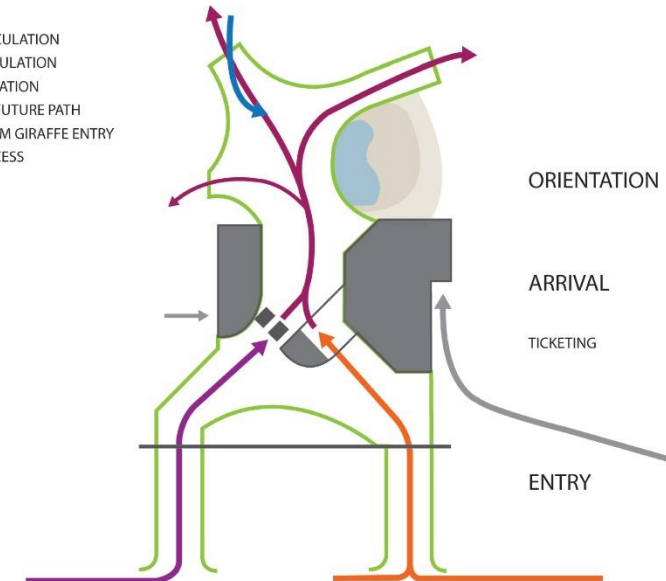
MASSING STUDY FROM FRONT



DIAGRAM

LEGEND

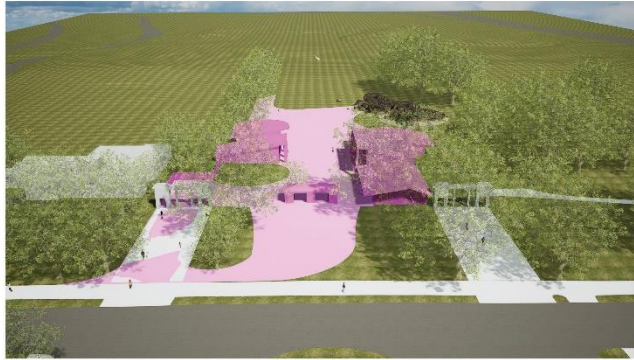
- PAVING
- VISITOR CIRCULATION
- GROUP CIRCULATION
- ZOO CIRCULATION
- - - PROPOSED FUTURE PATH
- GUESTS FROM GIRAFFE ENTRY
- SERVICE ACCESS





# OPTION 5: LOW FORMS CENTRAL SPINE

ALTERNATE VIEWS



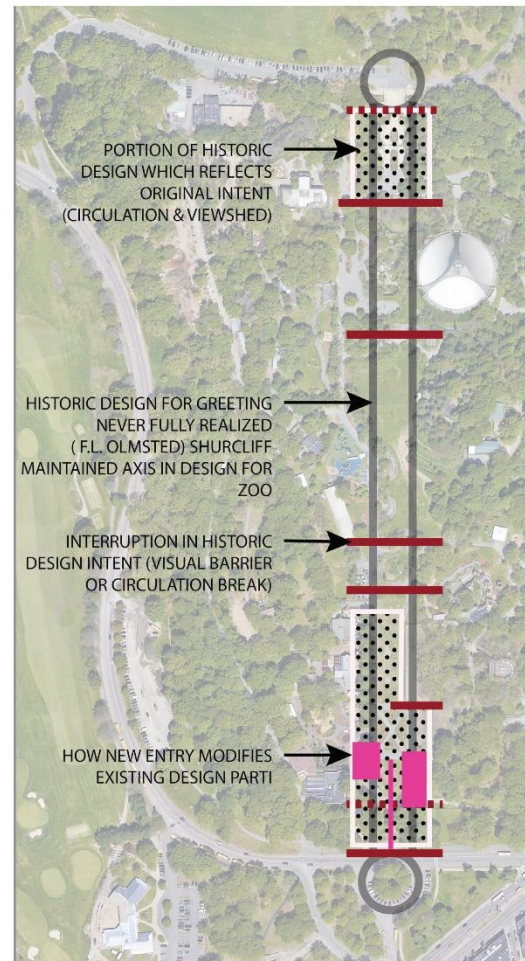
**PROS:**

- BRINGING BUILDING VOLUME FORWARD ALLOWS VISIBILITY FROM PRIMARY APPROACH
- SMALLER TREES IN HISTORIC ALLÉE ALLOW SHAPING OF CENTER ACCESS TO ADDRESS CIRCULATION
- MOVING TICKETING TO FENCE LINE GIVES MORE ROOM FOR ORIENTATION AND ARRIVAL

**CONS:**

- NO EASY ACCESS TO MEMBERSHIP AT TICKETING IS A NON-STARTER

DIAGRAM OF THE GREETING



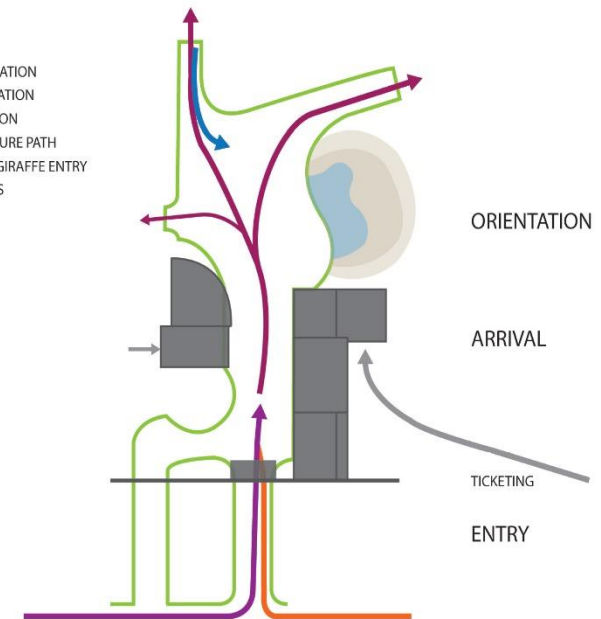
MASSING STUDY FROM FRONT



DIAGRAM

**LEGEND**

- PAVING
- VISITOR CIRCULATION
- GROUP CIRCULATION
- ZOO CIRCULATION
- - - PROPOSED FUTURE PATH
- GUESTS FROM GIRAFFE ENTRY
- SERVICE ACCESS





Newell Boat House by Peabody and Stearns



Tinley Park Train Station by Legat Architects



Franklin Park Golf House (rear)



Chestnut Hill Gatehouse

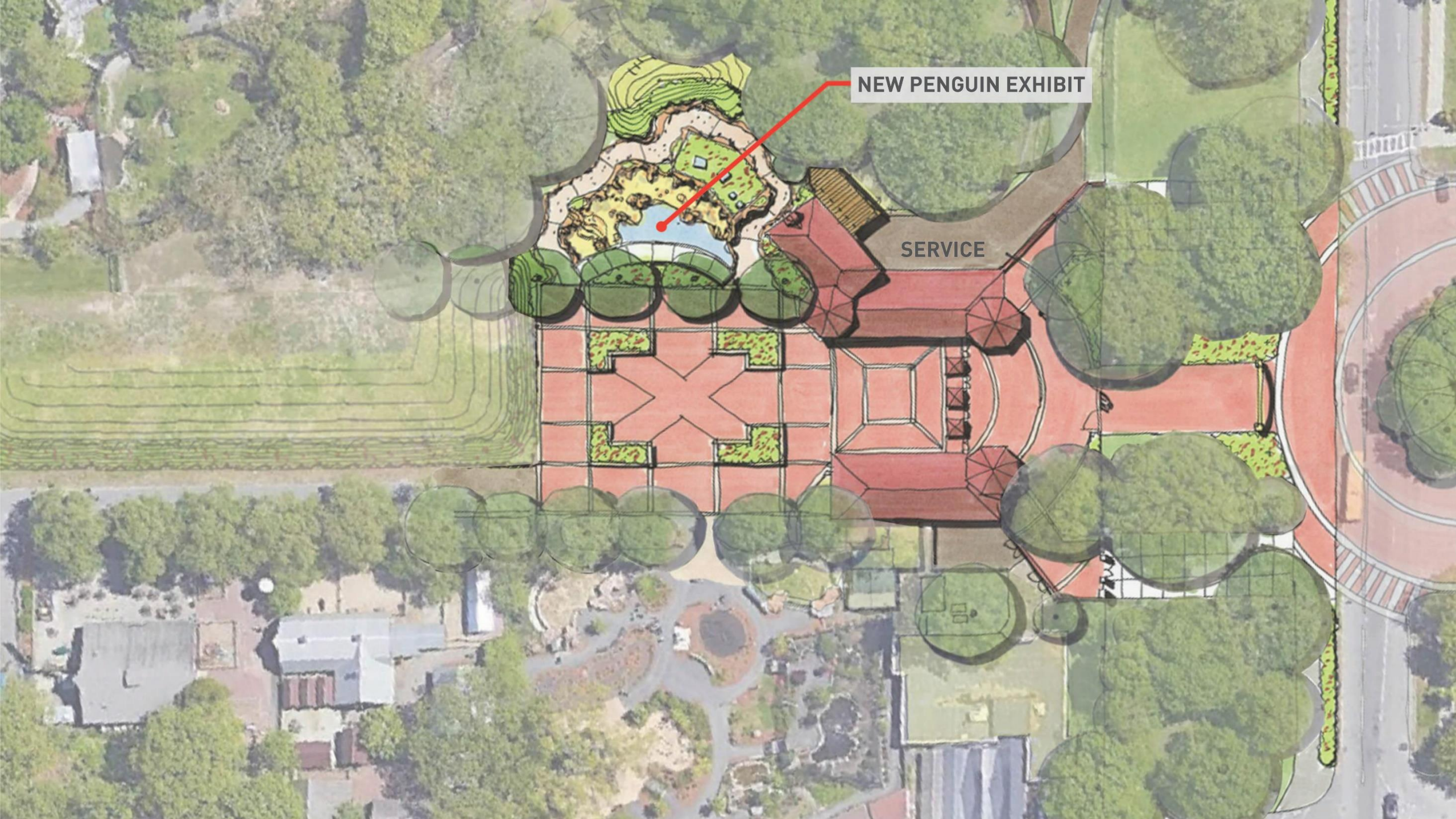


Fisher Hill Reservoir Gatehouse



South Boston Aquarium



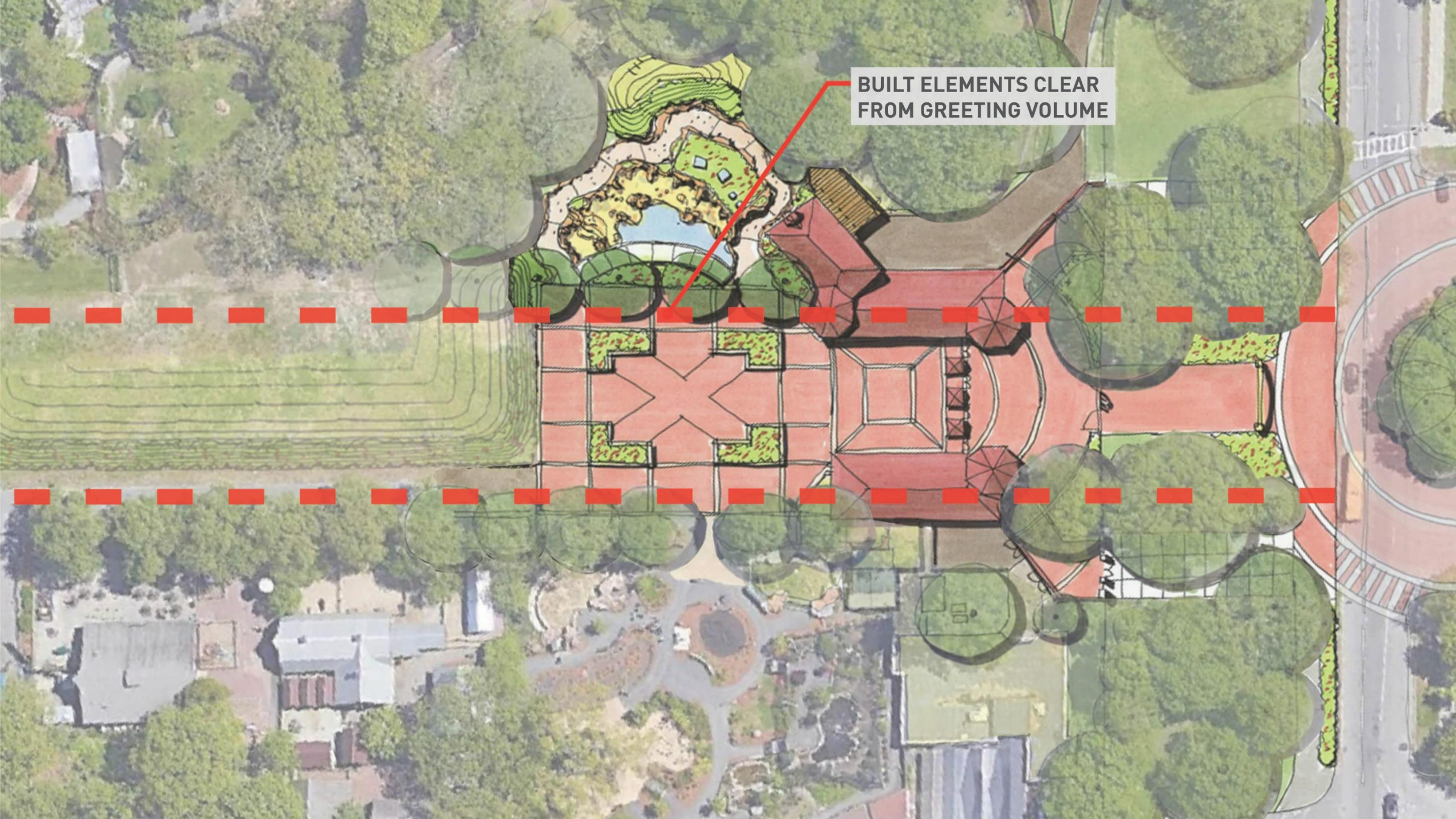


**NEW PENGUIN EXHIBIT**

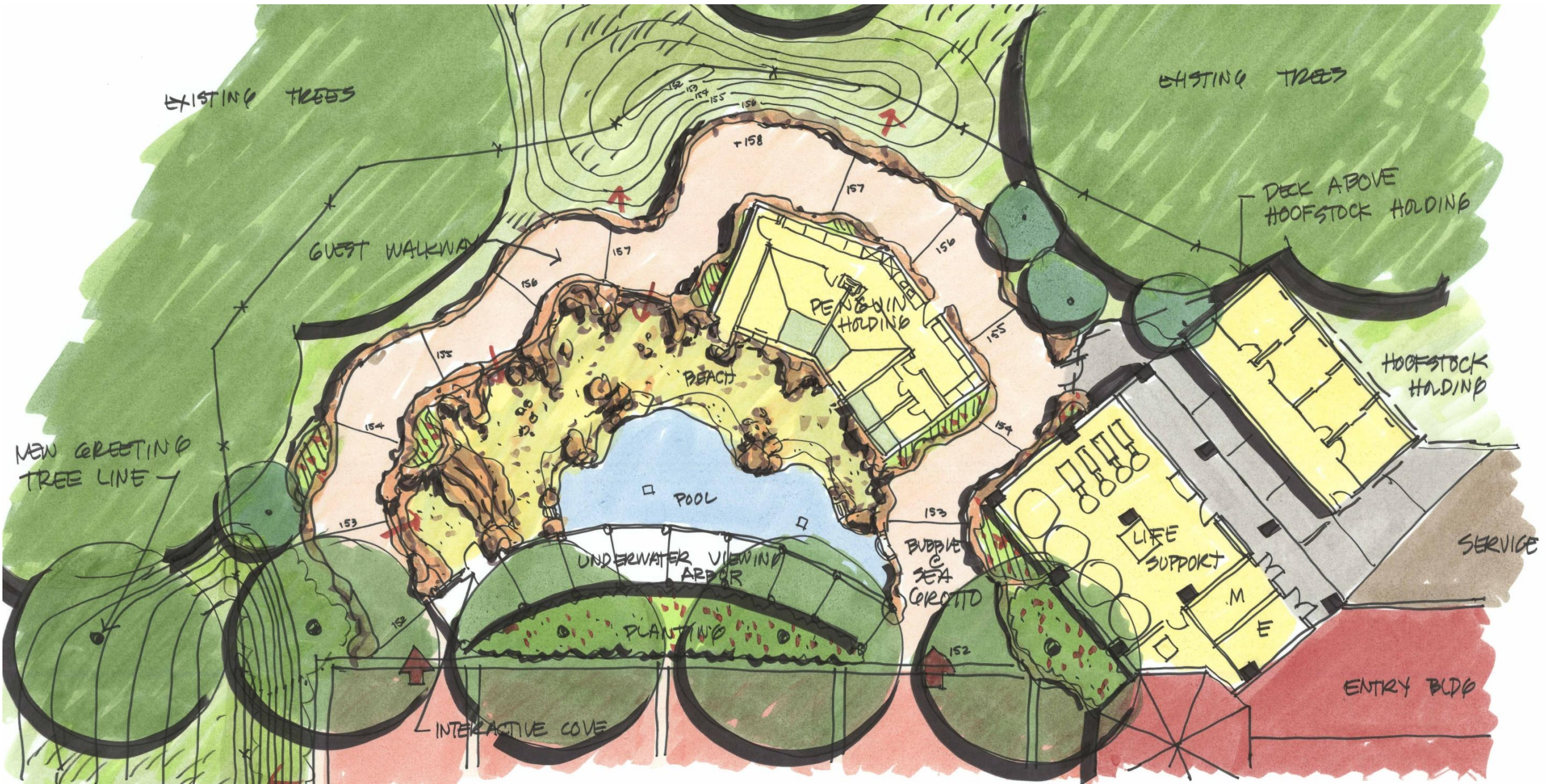
**SERVICE**



**BUILT ELEMENTS CLEAR  
FROM GREETING VOLUME**



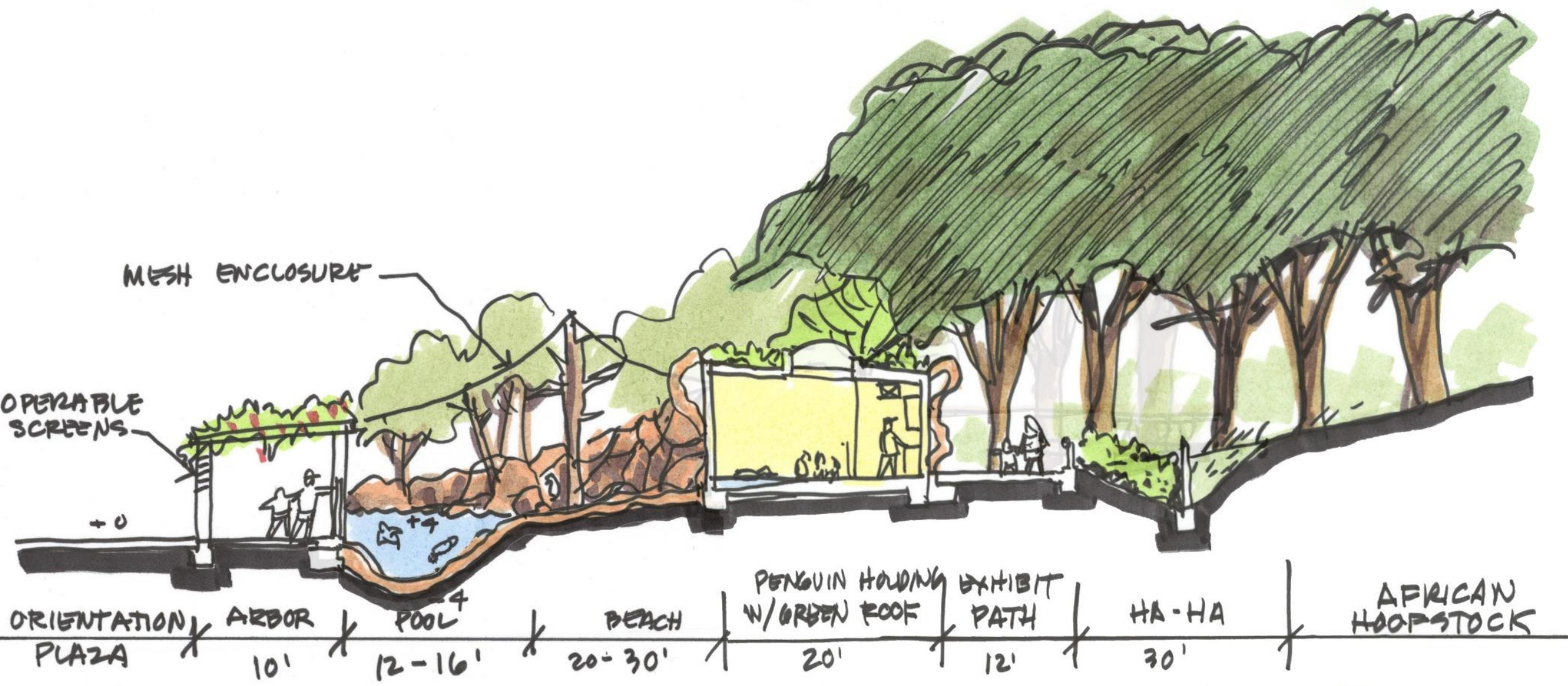




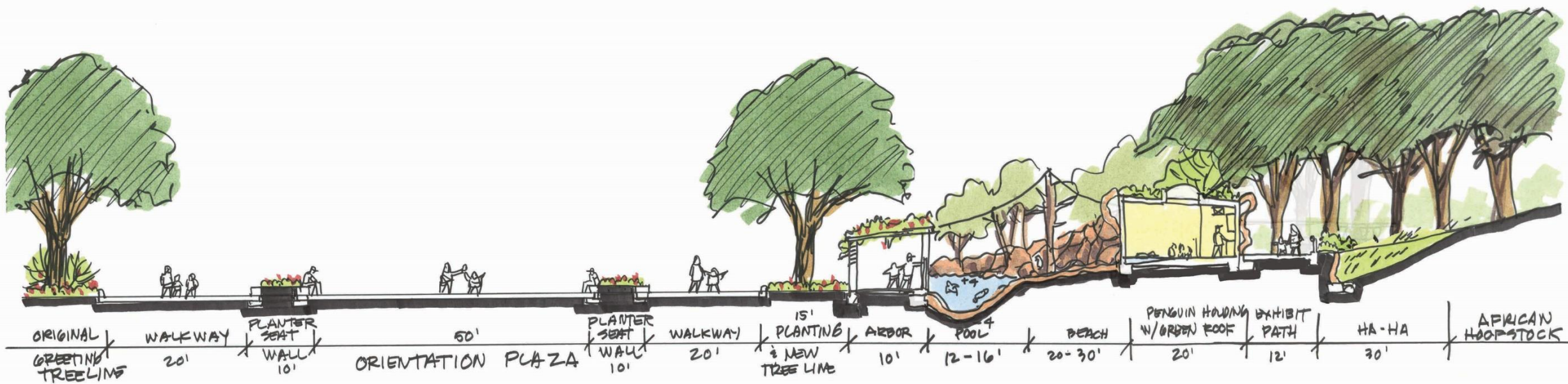
























330'-0"

315'-0"

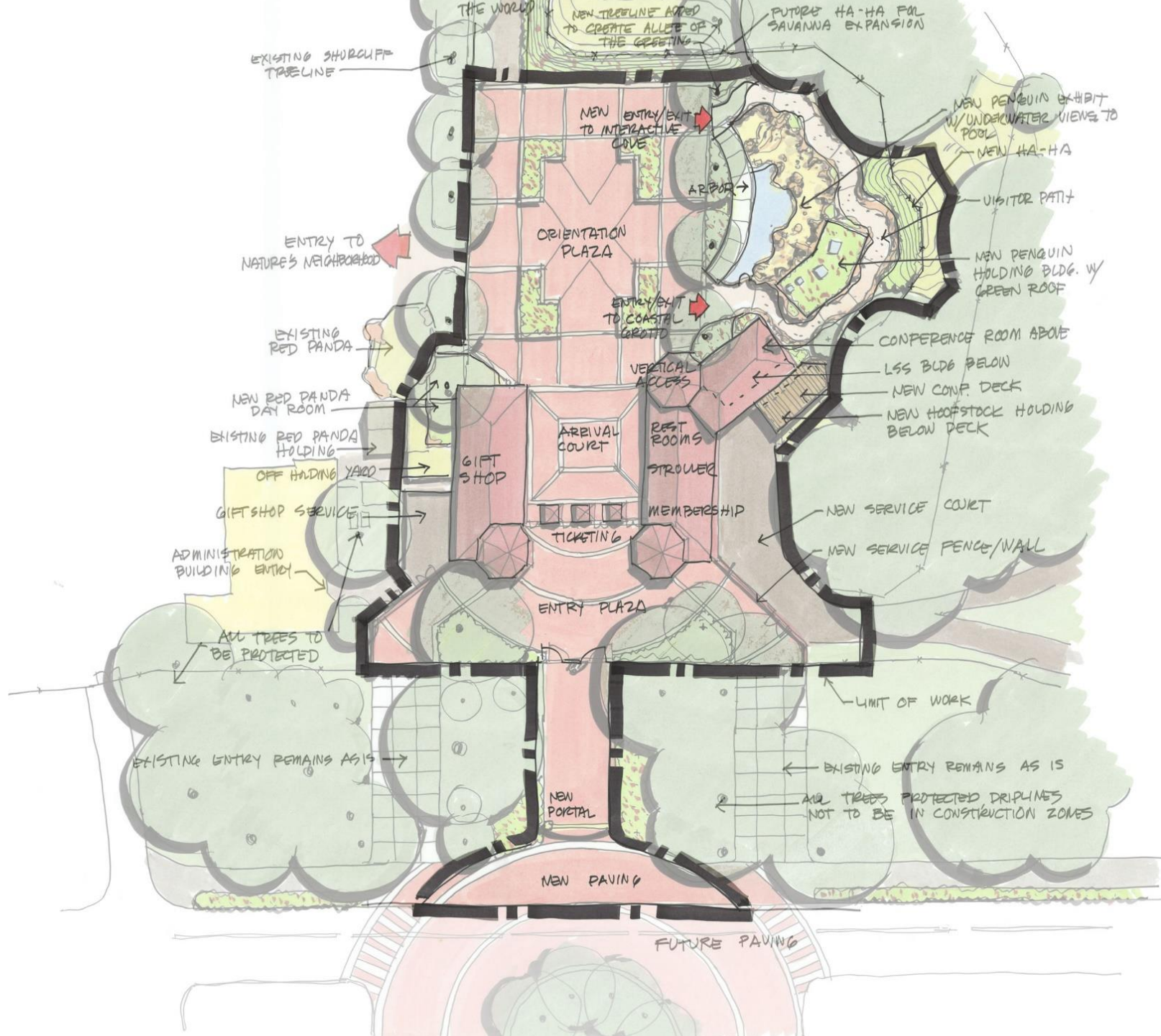
775'-0"

130'-0"

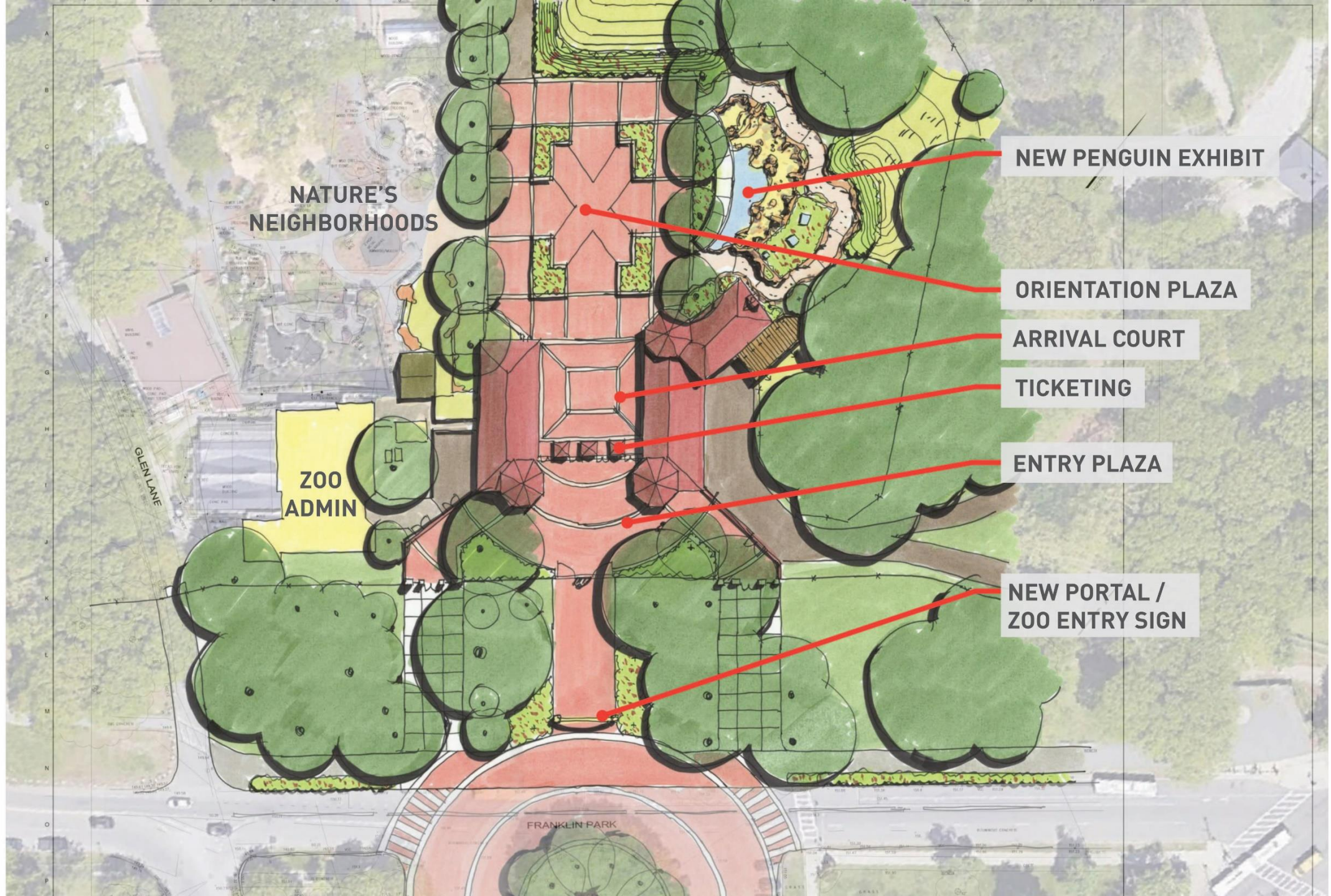












**NATURE'S  
NEIGHBORHOODS**

**ZOO  
ADMIN**

**NEW PENGUIN EXHIBIT**

**ORIENTATION PLAZA**

**ARRIVAL COURT**

**TICKETING**

**ENTRY PLAZA**

**NEW PORTAL /  
ZOO ENTRY SIGN**

FRANKLIN PARK

GLEN LANE