



EXISTING ELEVATION / 1/4" = 1'-0"

Proposed Window Well at:
55 Clarendon Street

Boston, MA

10.20.20

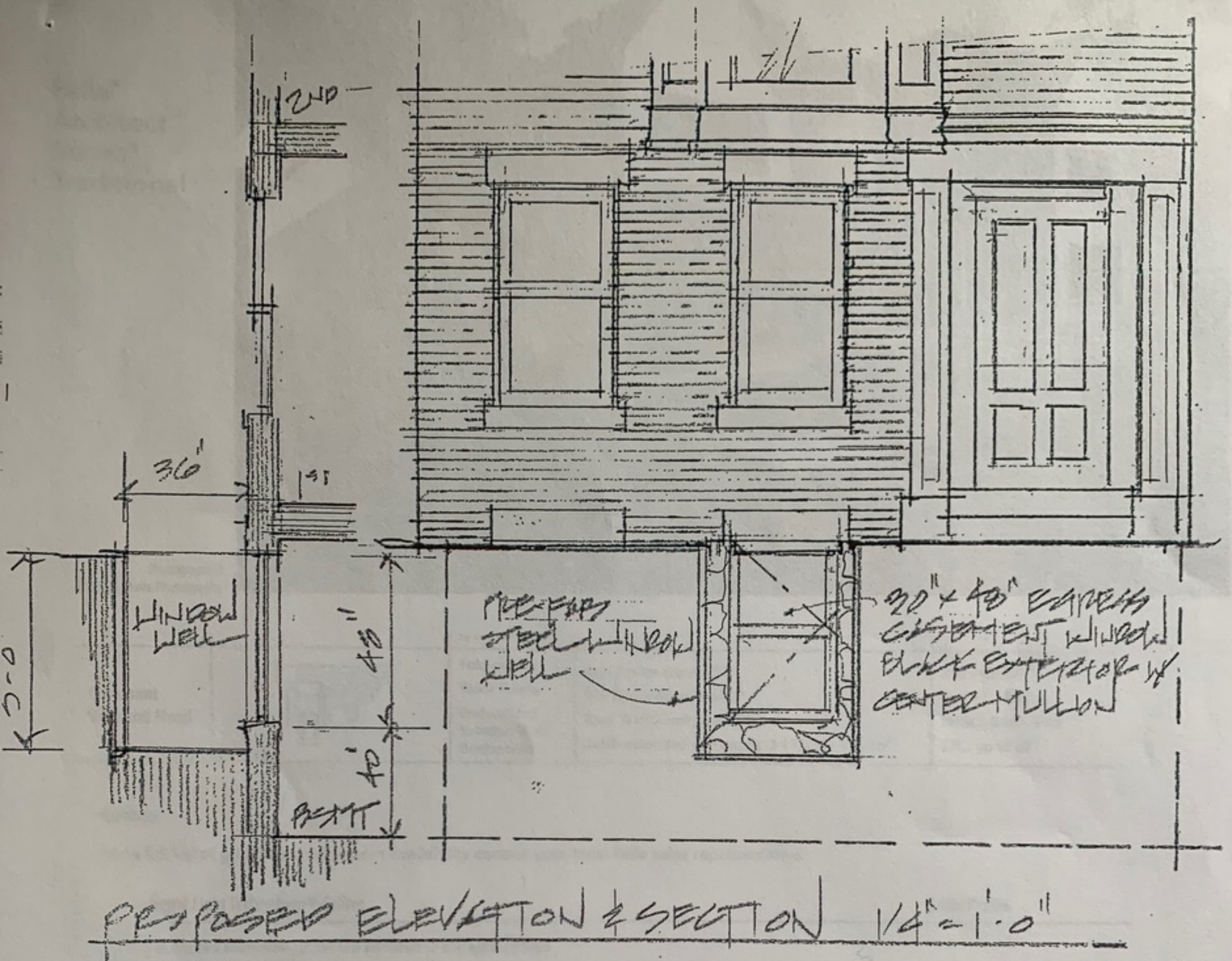
Scott William Grady *Architect*, Inc.

1105 Massachusetts Ave #2E

Cambridge, MA 02138

617-620-2420

swgrady@gmail.com



Proposed Window Well at:
55 Clarendon Street

Boston, MA

10.20.20.

Scott William Grady Architect, Inc.

1105 Massachusetts Ave #2E

Cambridge, MA 02138

617-620-2420

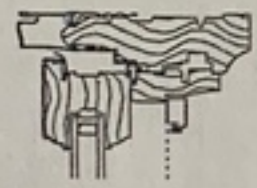
swgrady@gmail.com

Pella

Pella®
Architect
Series®
Traditional



Photograph(s)
© Ashley Avila Photography

<p>Casement Vent and Fixed</p>		<p>BRICKMOULD Fold-out fin Block Frame EnduraClad Exterior Trim / Brickmould</p>	<p>Base Frame Depth: 5" Std. Fin Setback: 1-5/16" Base Wall Depth: 3-11/16" Jamb extended wall depth: 3-11/16" - 9-3/16"</p>	<p>R30 - CW50 U: 0.23 - 0.49 SHGC: 0.16 - 0.63 STC: up to 32</p>
------------------------------------	---	---	--	--

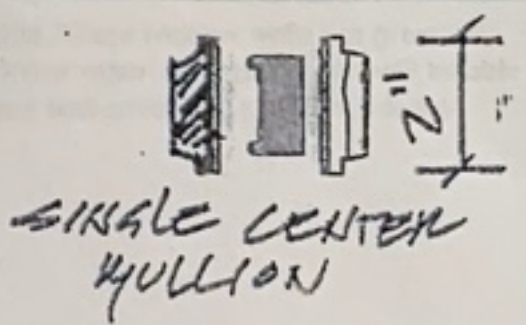
Grilles

For a full list of grille size and pattern availability contact your local Pella sales representative.

Integral Light Technology® Grilles

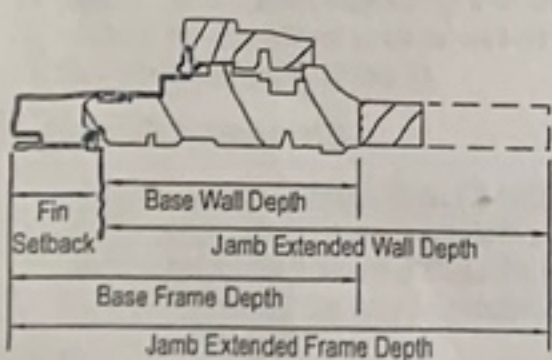
Grille Profile

- Extruded aluminum grilles are adhered to the exterior face
- Wood grilles are adhered to the interior face
- Between-the-glass foam spacers, which are aligned with the interior and exterior grilles, replicate the appearance of true divided lights
- Typical grilles are 7/8" wide ogee profile, other standard and custom widths are available
- Custom grille patterns are available



Finishes

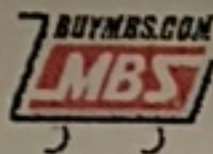
Window Frame Dimensions



Standard Fold-Out Fin

EnduraClad® Protective Finish Standard Colors + Virtually Unlimited Custom Colors





Search

Go

Login (signin.aspx) My Account (account.aspx)

//def

Brand wellc



out (X?)

Wellcraft 2062 Series One Piece Egress Window Well

4.7 stars 18 reviews



Select Your Options:

Clear Choose Your Options

Gray Granite

Grey Granite

Manufacturer Number:

02062019

In Stock Now!

Price: \$666.63

Quantity:

★ REVIEWS

//m-

PR

De

The Wellcraft 2062 Series Single Unit Egress Window Wells is intended for use with the Egress Windows of up to 3 feet wide. These window wells are great for providing exits from basements, while also letting in sunlight and creating a nice curb appeal for your yard. In case of a fire or other emergency, you will be able to escape quickly and easily from your basement with this window well system. Be sure to pair it with the matching window well cover and sliding window to complete the system.

Features

- Designed for use with up to 3-foot wide egress windows
• One piece construction makes the well durable and simple to install
• Made with UV-protected Polyethylene

Specifications

- Height: 62" (at widest point of wall attachment)
• Depth: 37.5" (from exterior wall to stepladder)
• Width: 49" (at widest point of wall attachment)
• Square Footage: 9.29 Sq. Ft.

Helpful Documents

- 2062 Installation Instructions (/Images/Wellcraft_Wells/PDFs/2062_Installation_Instructions.pdf)
• 2060, 2062, 6700 Cover Installation (/Images/Wellcraft_Wells/PDFs/2060_2062_6700_Installation_Instructions.pdf)
• 2062 Specification Sheet (https://buymbs.com/Images/Wellcraft%20Wells/PDFs/2062%20Specification%20Sheet%20(new).pdf)
• Limited Lifetime Warranty (/Images/Wellcraft_Wells/PDFs/Wellcraft_Warranty.pdf)

Helpful Images

Simply click on any image to see it full size and click it again to close it.

4.7 stars Google Customer Reviews

