

300 A STREET

PROPOSED WINDOW GRAPHICS
& ENTRANCE BLADE SIGN

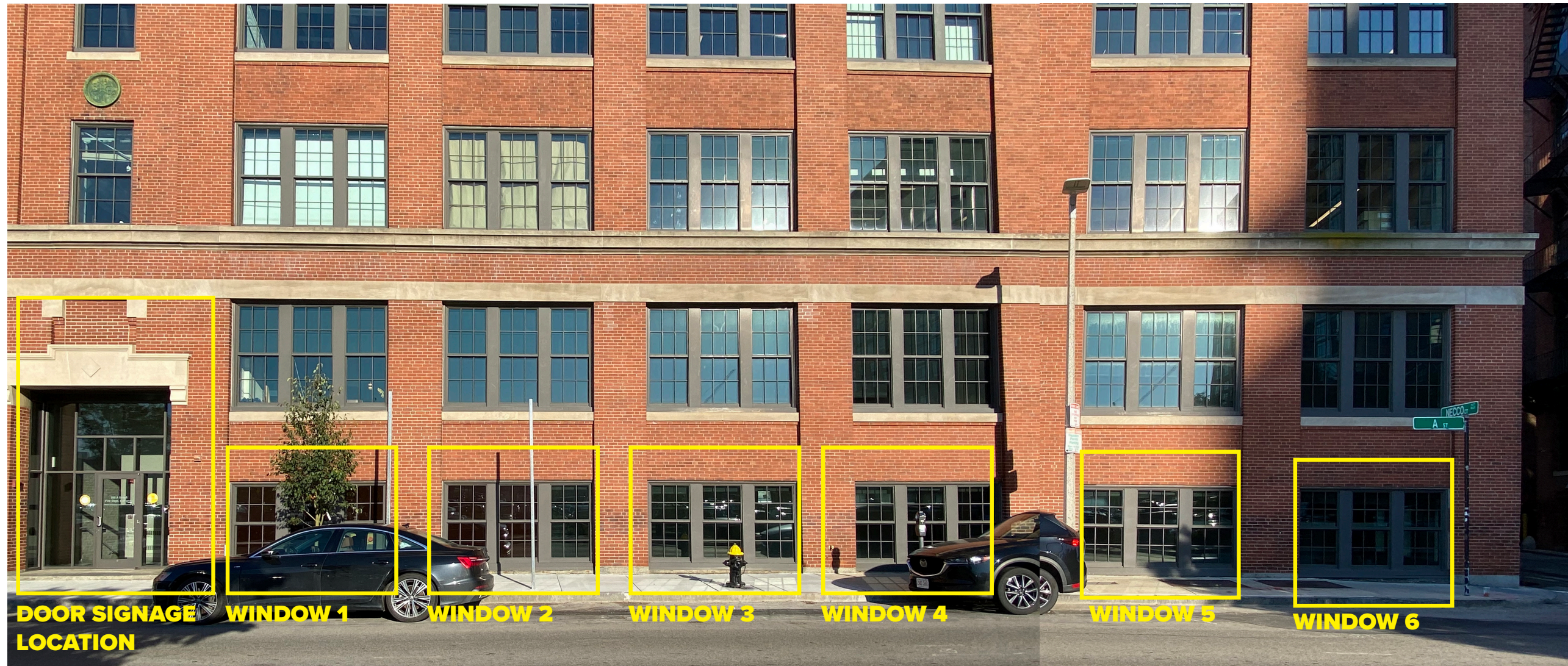
Revised November 17, 2020



300 A STREET | EXISTING CONDITIONS

November 2020

A STREET ELEVATION



**DOOR SIGNAGE
LOCATION**

WINDOW 1

WINDOW 2

WINDOW 3

WINDOW 4

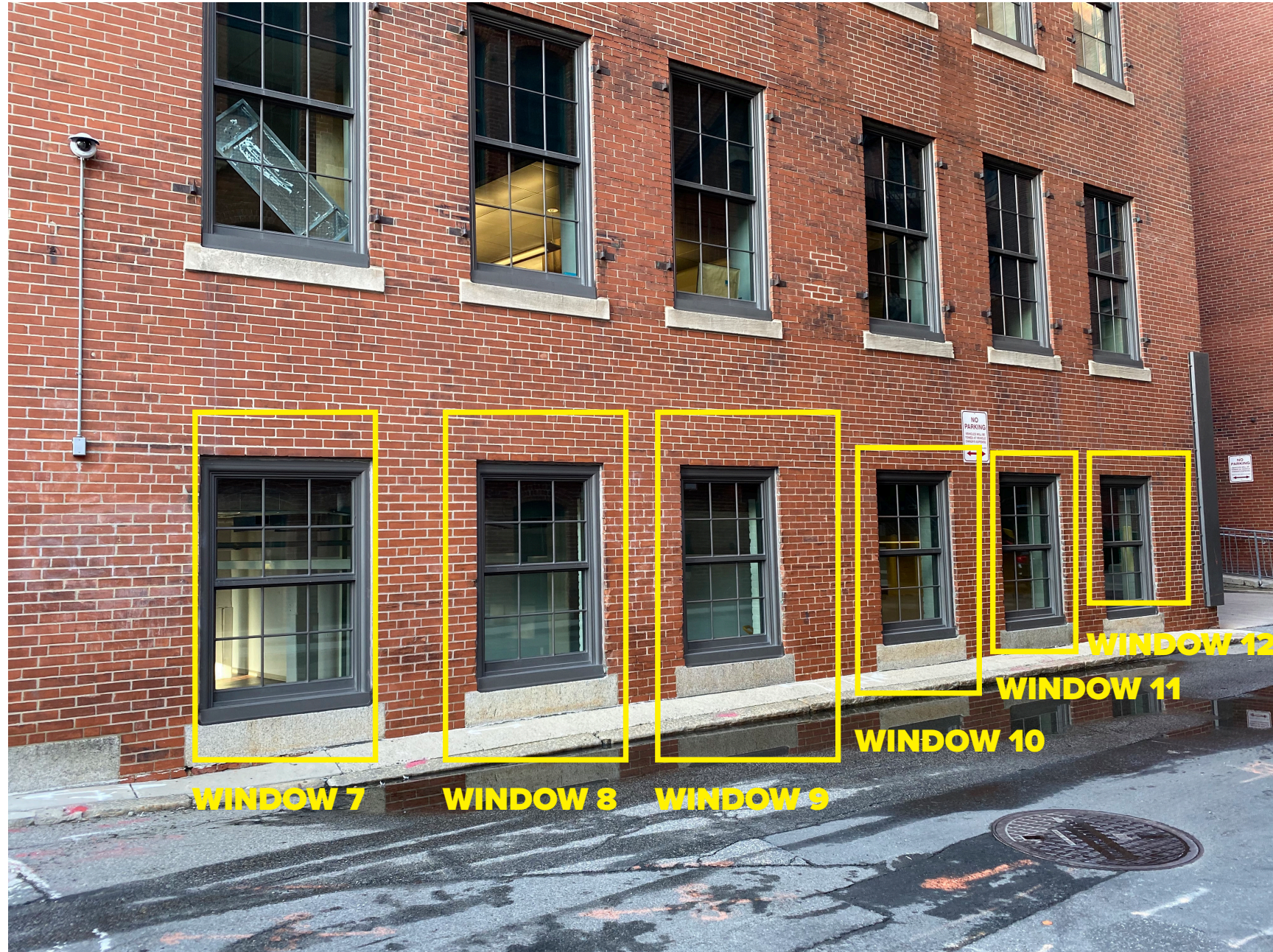
WINDOW 5

WINDOW 6

300 A STREET | EXISTING CONDITIONS

November 2020

NECCO COURT WINDOWS



300 A STREET | EXISTING CONDITIONS

November 2020

A STREET DOOR DETAIL



BLADE SIGNAGE | FORT POINT CHANNEL LANDMARK DISTRICT

November 2020



313 CONGRESS STREET, 02210



343 CONGRESS STREET, 02210



345 CONGRESS STREET, 02210



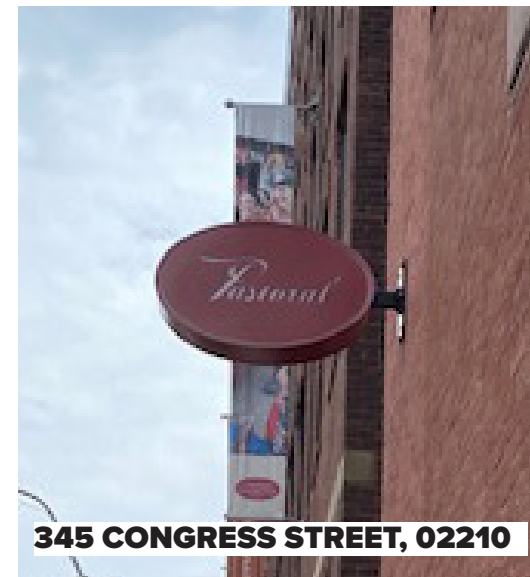
383 CONGRESS STREET, 02210



313 CONGRESS STREET, 02210



343 CONGRESS STREET, 02210



345 CONGRESS STREET, 02210



383 CONGRESS STREET, 02210

LEASING SIGNAGE | FORT POINT CHANNEL LANDMARK DISTRICT

November 2020



LEASING SIGNAGE | FORT POINT CHANNEL LANDMARK DISTRICT

November 2020



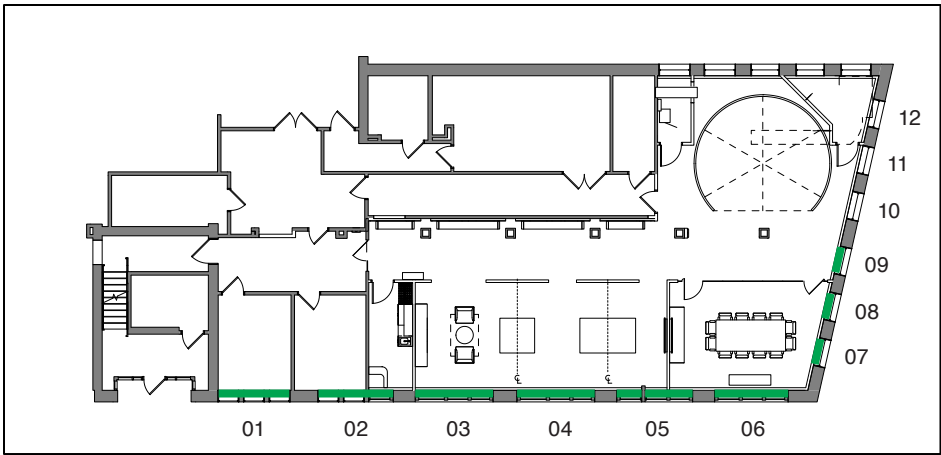
LEASING SIGNAGE | FORT POINT CHANNEL LANDMARK DISTRICT

November 2020



Channelside
Marketing Center

Revised Option 1

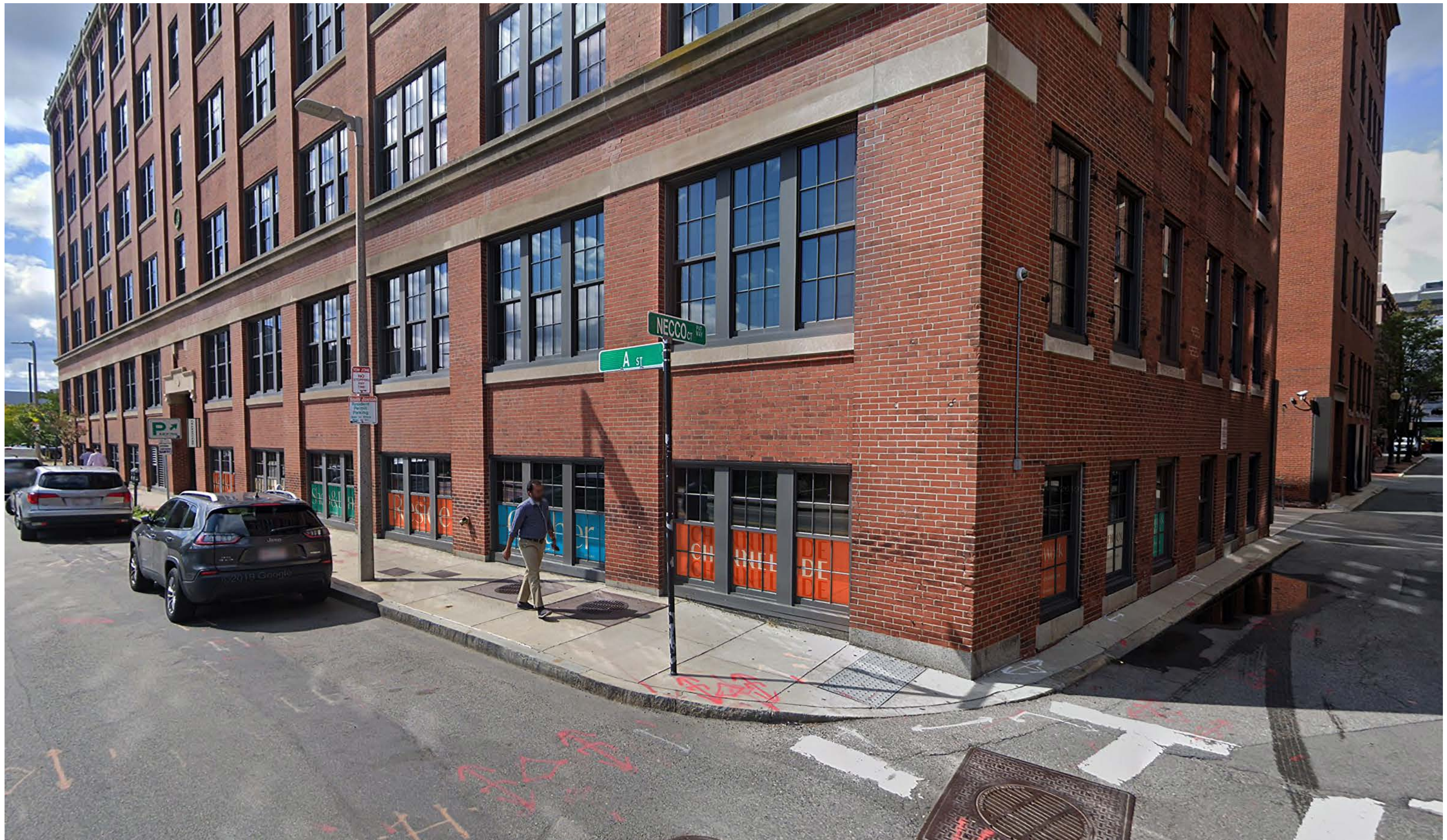




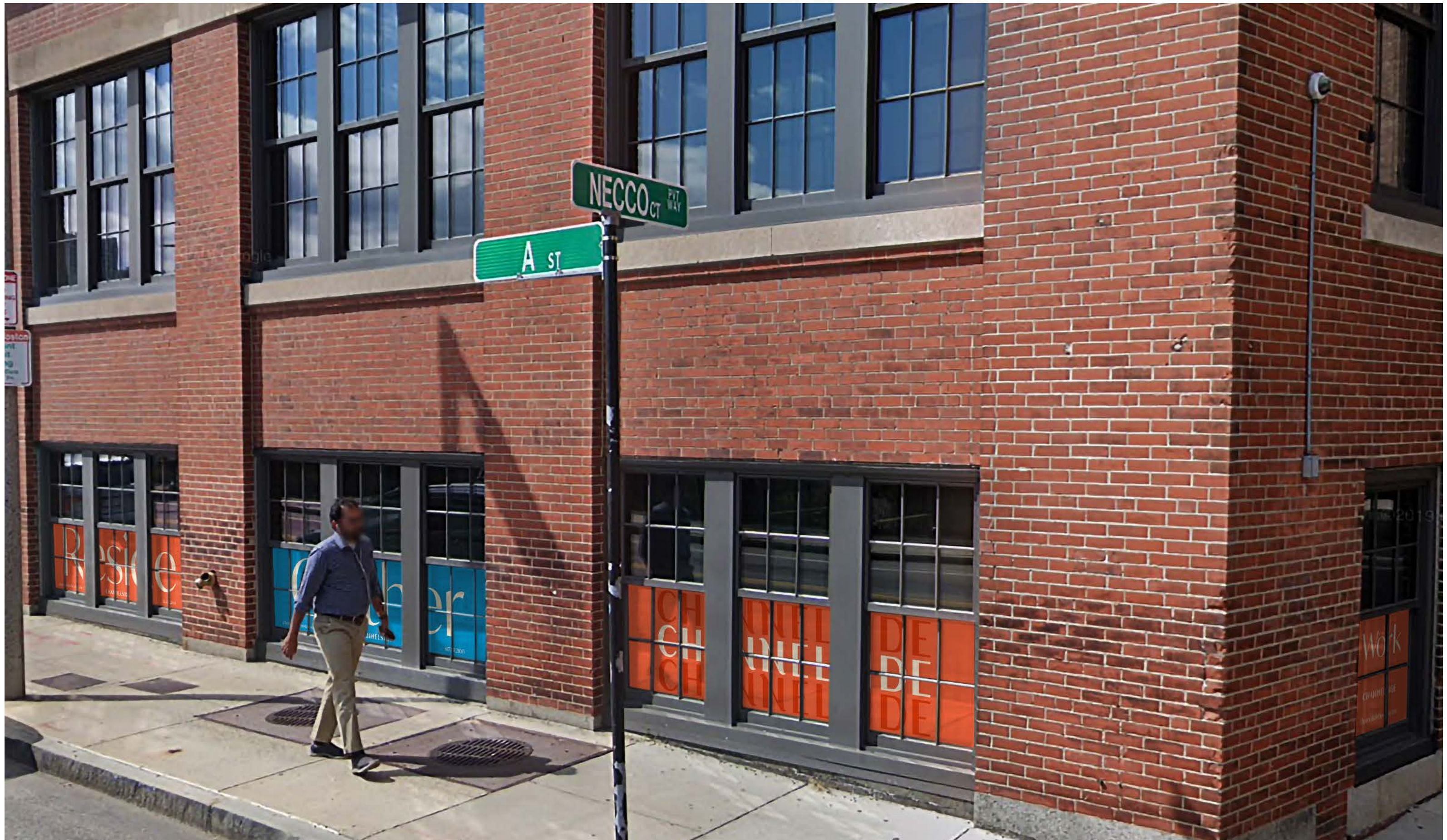
Bay 03 Detail



Bay 09 Detail



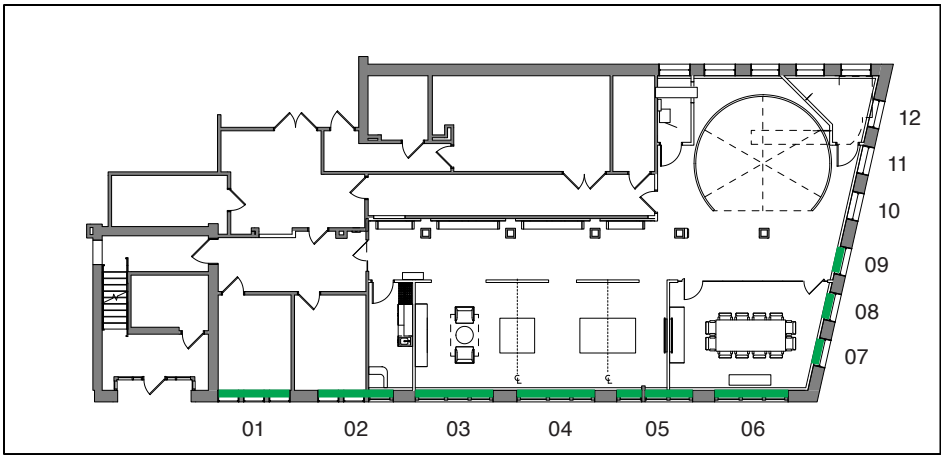
Revised Option 1

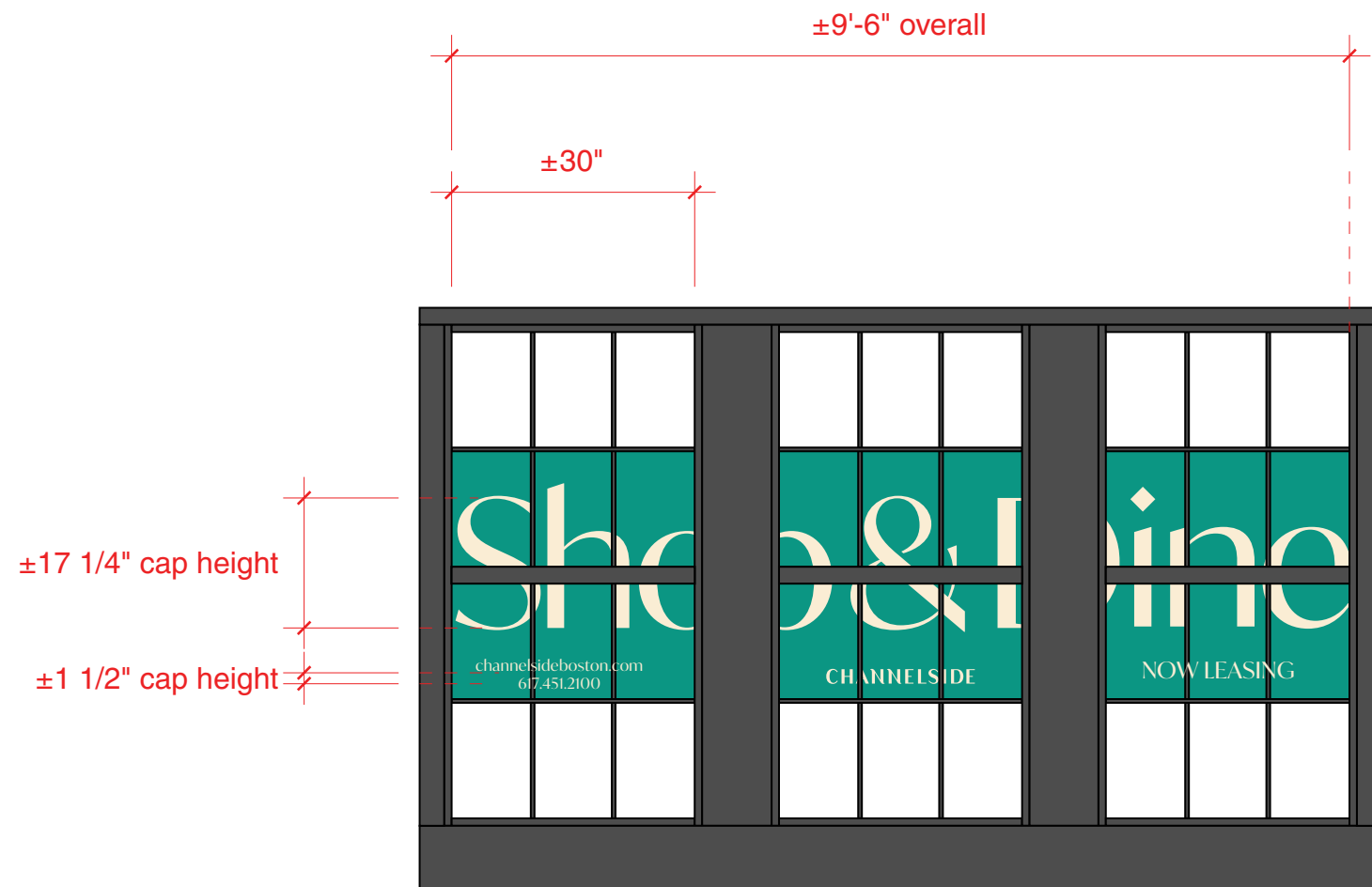


Revised Option 1

Channelside
Marketing Center

Revised Option 2

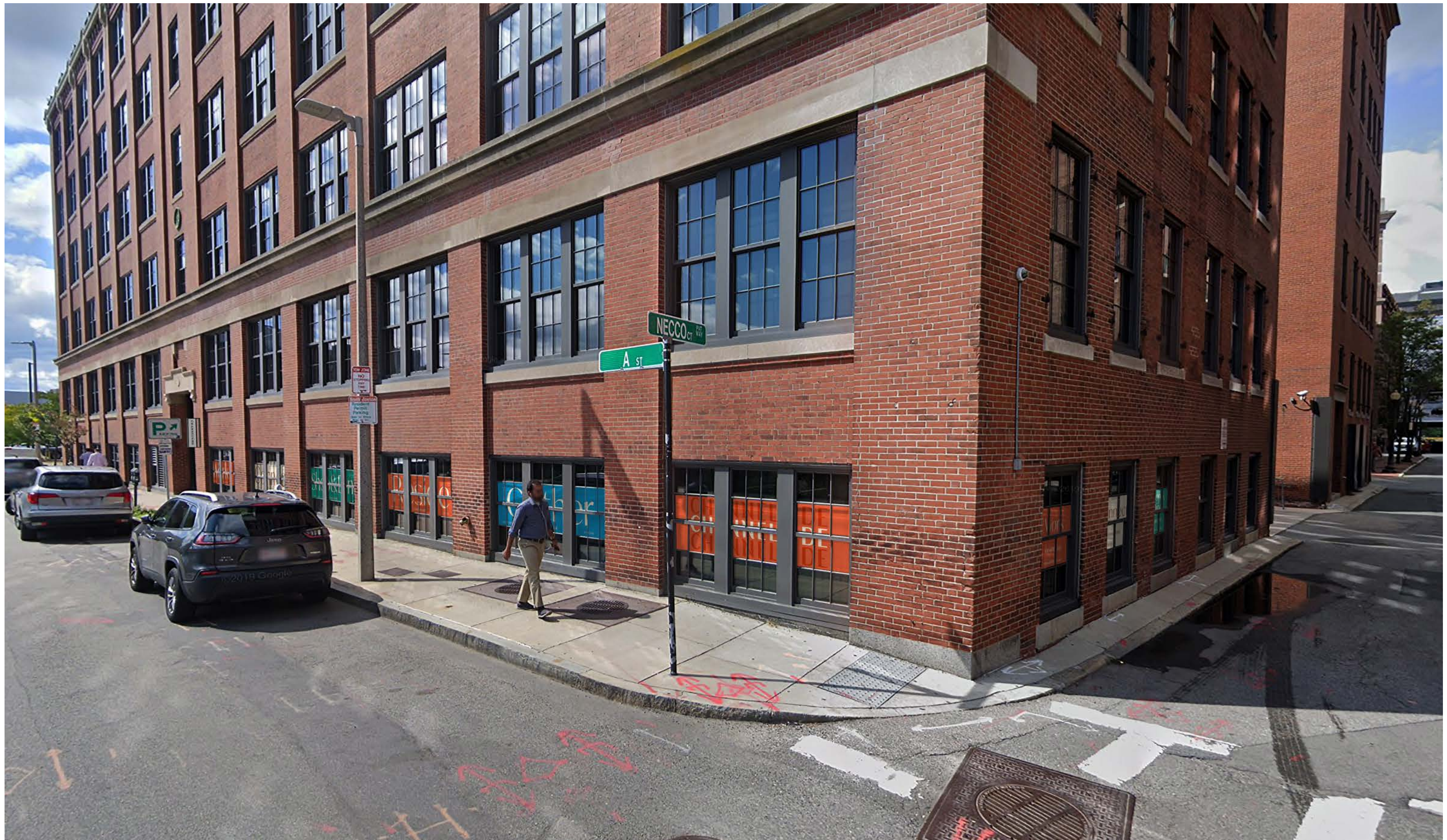


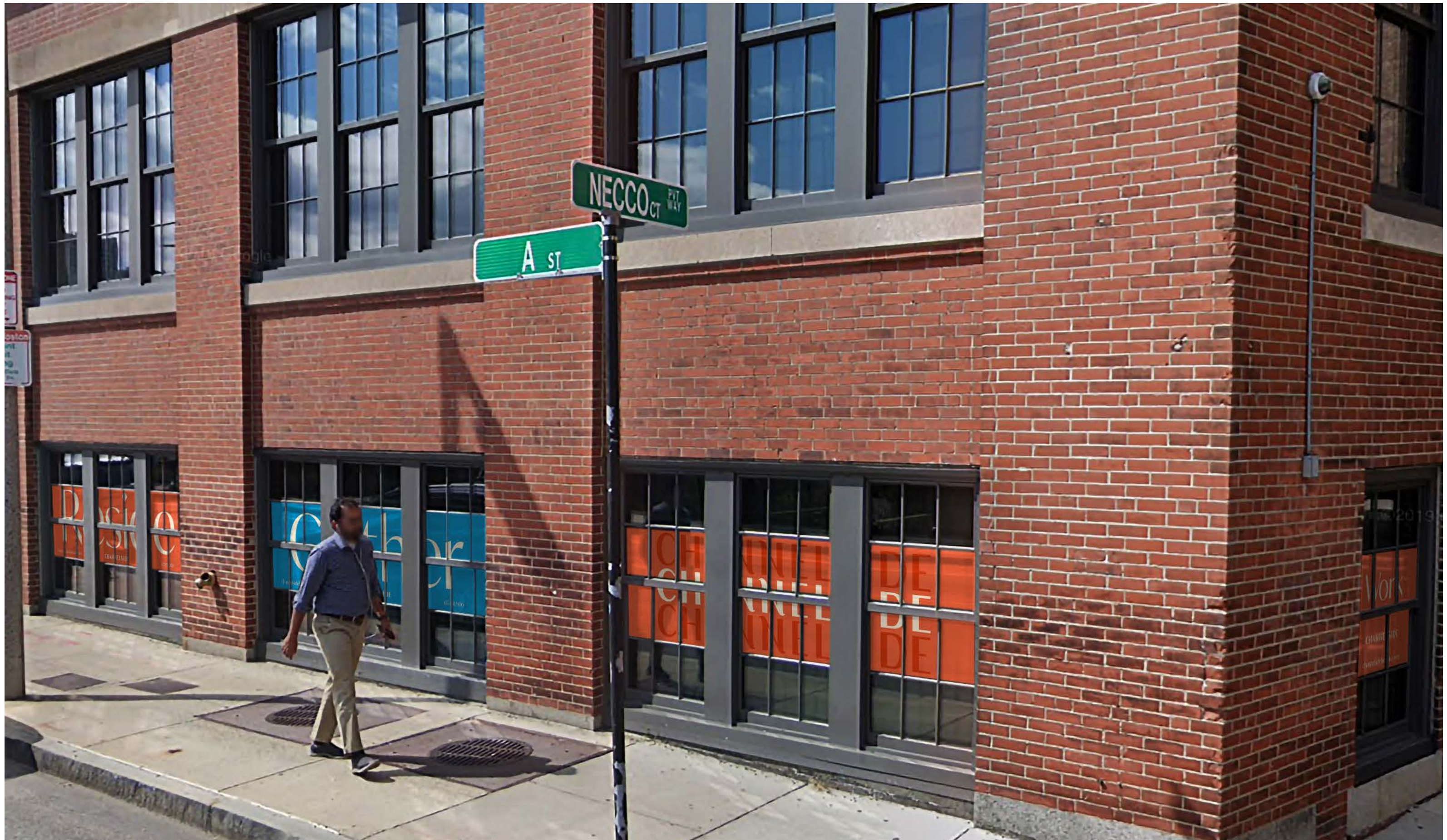


Bay 03 Detail



Bay 09 Detail



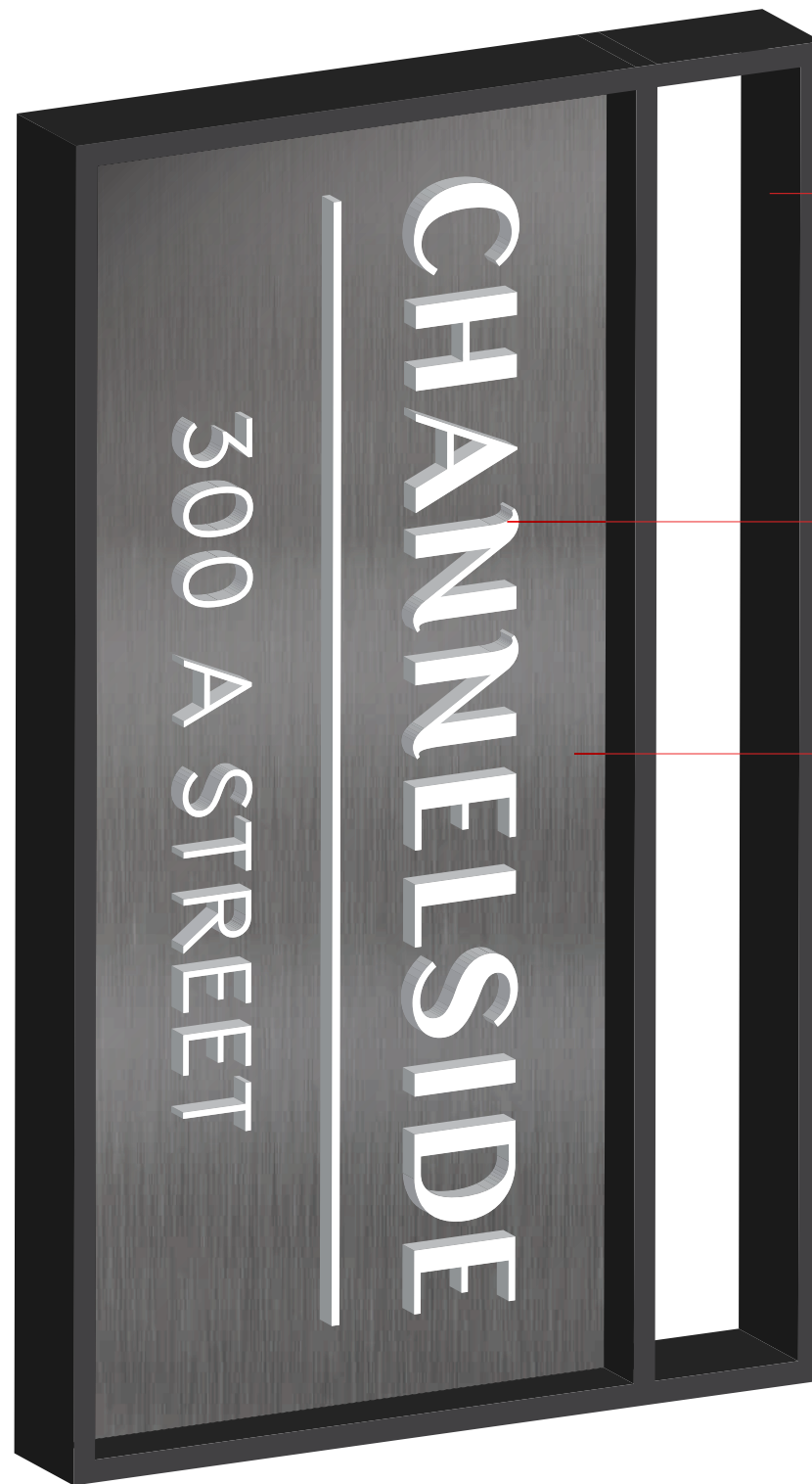


Channelside
Marketing Center

Blade Sign



Blade Sign, Illumination

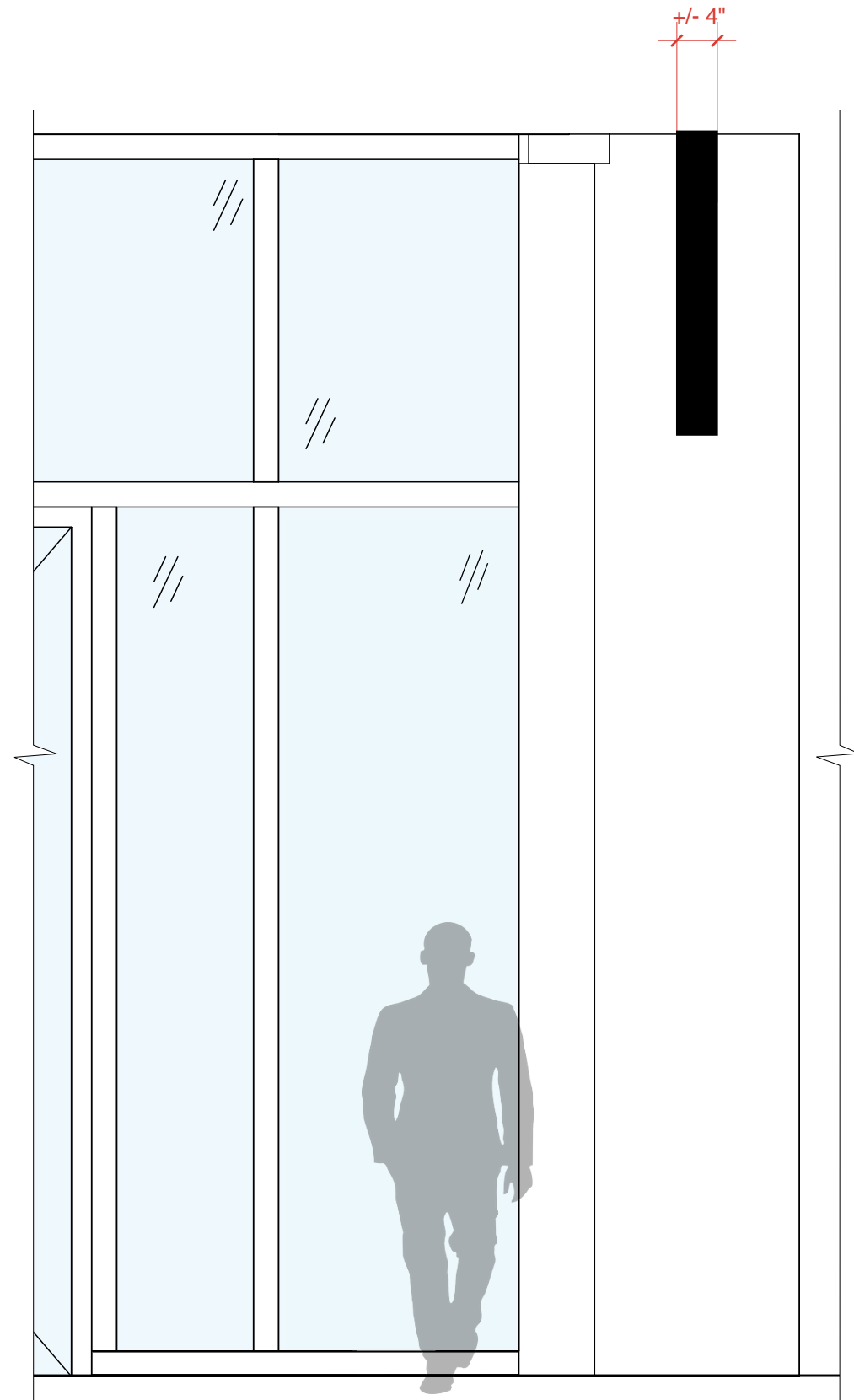
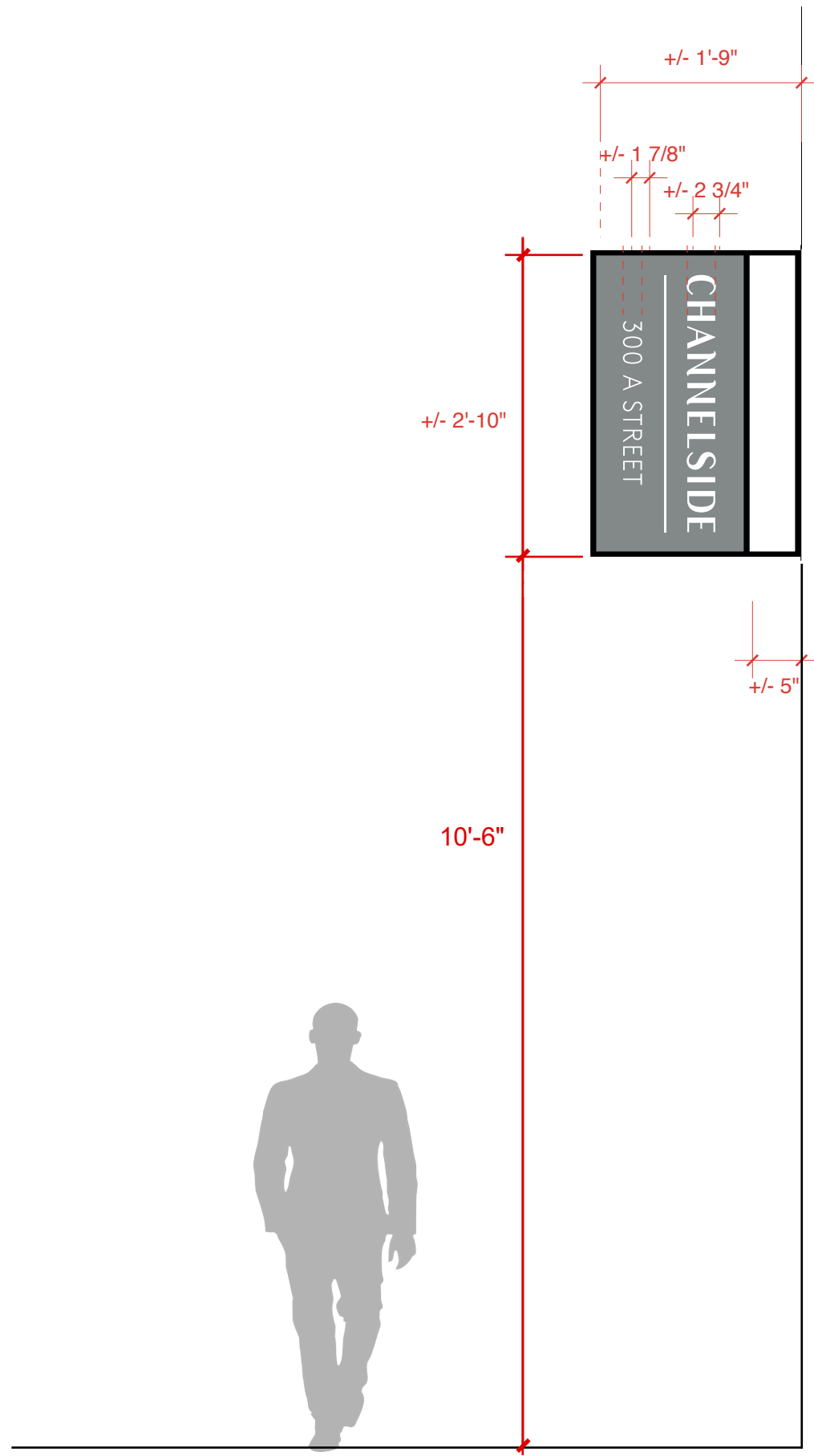


Frame/Armature:
Blacked Steel,
Vertical brushed finish

Mounted to existing mortar joints (not bricks)
via mechanical fasteners:
threaded rods and silicone, or as required.

Lettering:
1/8" deep,
Push-through White Acrylic,
Internally illuminated w/LED lighting

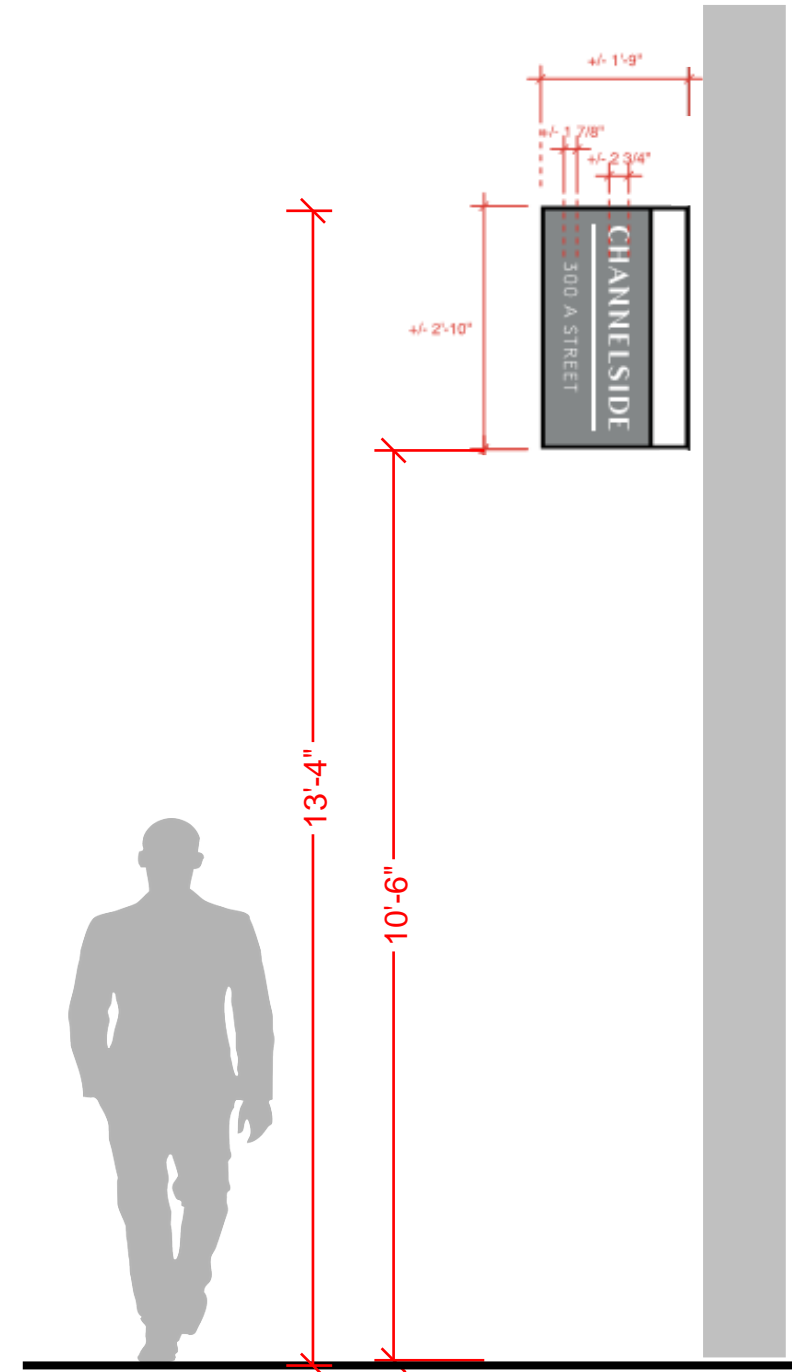
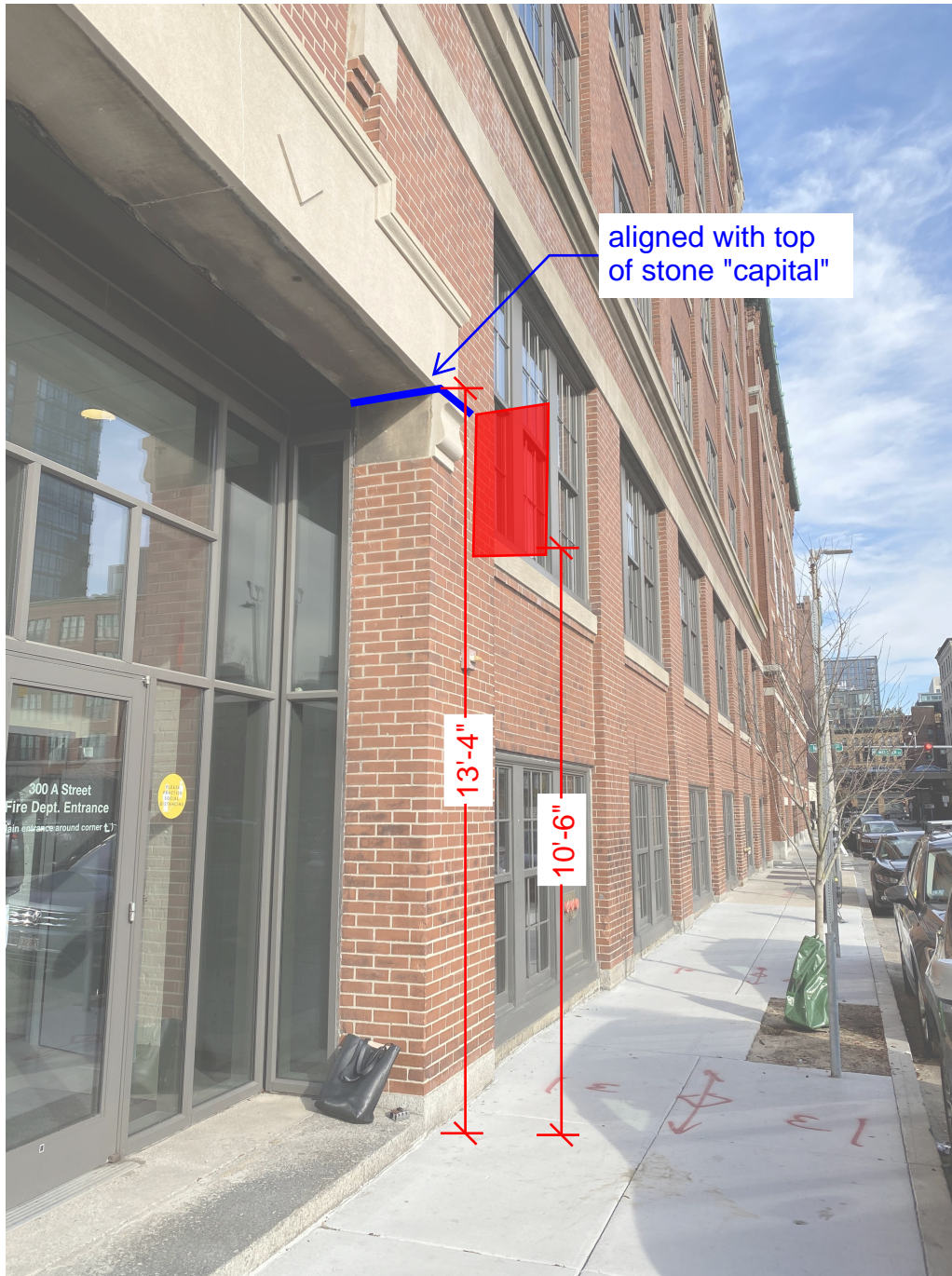
Sign Face:
Stainless Steel,
Vertical brushed finish



Blade Sign, Elevation

PROPOSED OPTION

aligns with entry door opening



PREVIOUS SUBMISSION

