



South West Entry



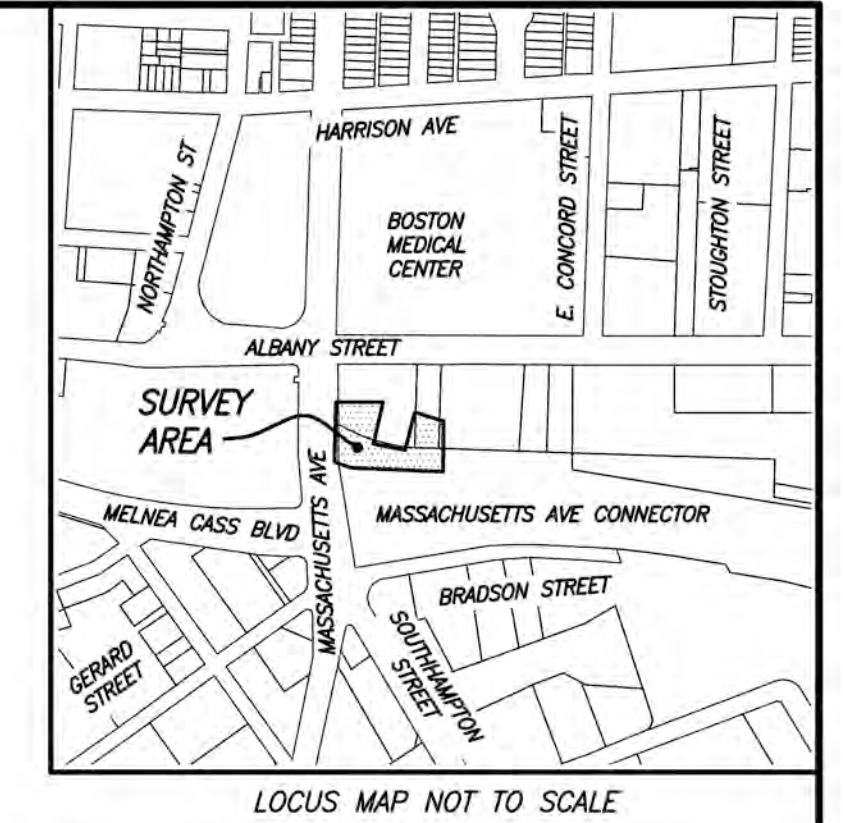
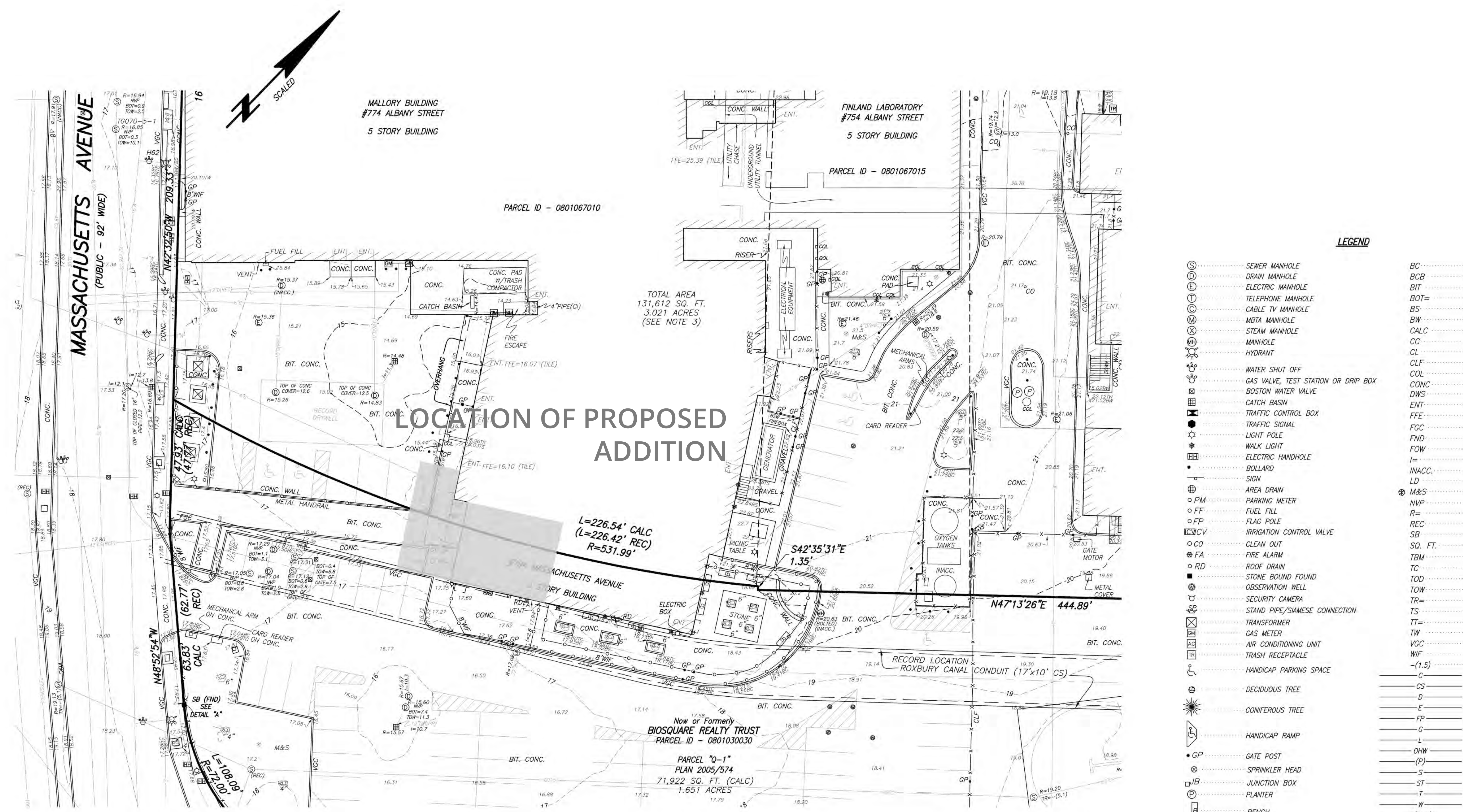
South Facing Melnea Cass Blvd.



South West Entry
Detail



South East View



LOCATION OF PROPOSED ADDITION

LEGEND

- | | | | |
|---|-------------------------------------|---------|--|
| ⊙ | SEWER MANHOLE | BC | BOTTOM OF CURB |
| ⊙ | DRAIN MANHOLE | BCB | BIT. CONC. BERM |
| ⊙ | ELECTRIC MANHOLE | BIT | BITUMINOUS |
| ⊙ | TELEPHONE MANHOLE | BOT= | BOTTOM ELEVATION |
| ⊙ | CABLE TV MANHOLE | BS | BOTTOM OF STEPS |
| ⊙ | MBTA MANHOLE | BW | BOTTOM OF WALL |
| ⊙ | STEAM MANHOLE | CALC | CALCULATED |
| ⊙ | MANHOLE | CC | CONCRETE CURB |
| ⊙ | HYDRANT | CL | CLUSTER |
| ⊙ | WATER SHUT OFF | CLF | CHAIN LINK FENCE |
| ⊙ | GAS VALVE, TEST STATION OR DRIP BOX | COL | COLUMN |
| ⊙ | BOSTON WATER VALVE | CONC | CONCRETE |
| ⊙ | CATCH BASIN | DWS | DETECTABLE WARNING SYSTEM (SEE NOTE 8) |
| ⊙ | TRAFFIC CONTROL BOX | ENT | ENTRANCE |
| ⊙ | TRAFFIC SIGNAL | FFE | FINISHED FLOOR ELEVATION |
| ⊙ | LIGHT POLE | FGC | FLUSH GRANITE CURB |
| ⊙ | WALK LIGHT | FND | FOUND |
| ⊙ | ELECTRIC HANDHOLE | FOW | FULL OF WATER |
| ⊙ | BOLLARD | I= | INVERT ELEVATION |
| ⊙ | SIGN | INACC. | INACCESSIBLE |
| ⊙ | AREA DRAIN | LD | LOADING DOCK |
| ⊙ | PARKING METER | M&S | MULCH & SHRUBS |
| ⊙ | FUEL FILL | NVP | NO VISIBLE PIPES |
| ⊙ | FLAG POLE | R= | RADIUS OR RIM ELEVATION |
| ⊙ | IRRIGATION CONTROL VALVE | REC | RECORD |
| ⊙ | CLEAN OUT | SB | STONE BOUND |
| ⊙ | FIRE ALARM | SQ. FT. | SQUARE FEET |
| ⊙ | ROOF DRAIN | TBM | TEMPORARY BENCH MARK |
| ⊙ | STONE BOUND FOUND | TC | TOP OF CURB |
| ⊙ | OBSERVATION WELL | TOD | TOP OF DEBRIS |
| ⊙ | SECURITY CAMERA | TOW | TOP OF WATER |
| ⊙ | STAND PIPE/SAMESE CONNECTION | TR= | CENTERLINE OF TROUGH |
| ⊙ | GAS METER | TS | TOP OF STEPS |
| ⊙ | AIR CONDITIONING UNIT | TT= | TOP OF TRAP |
| ⊙ | TRASH RECEPTACLE | TW | TOP OF WALL |
| ⊙ | HANDICAP PARKING SPACE | VGC | VERTICAL GRANITE CURB |
| ⊙ | DECIDUOUS TREE | WIF | WROUGHT IRON FENCE |
| ⊙ | CONIFEROUS TREE | -(1.5) | ELEVATION 1.5 FEET BELOW 0.0 |
| ⊙ | HANDICAP RAMP | C | CABLE TELEVISION |
| ⊙ | GATE POST | CS | COMBINED SEWER |
| ⊙ | SPRINKLER HEAD | D | DRAIN |
| ⊙ | JUNCTION BOX | E | ELECTRIC |
| ⊙ | PLANTER | FP | FIRE PROTECTION SERVICE |
| ⊙ | BENCH | G | GAS |
| ⊙ | CHANGE IN GRADE | L | STREET LIGHTING |
| ⊙ | RECORD PIPE CONNECTOR | OHW | OVERHEAD WIRES |
| ⊙ | GRATE | -(P) | PAINTED UTILITY LINE |
| | | S | SEWER |
| | | ST | STEAM |
| | | T | TELEPHONE |
| | | W | WATER |
| | | S(ABD) | ABANDONED |
| | | 12"(C) | PIPE SIZE AND MATERIAL |
| | | CI | CAST IRON |
| | | CPP | CORRUGATED PLASTIC PIPE |
| | | PVC | POLY VINYL CHLORIDE |
| | | RCP | REINFORCED CONCRETE PIPE |
| | | VCP | VITRIFIED CLAY PIPE |
| | | -X | CHAINLINK FENCE |
| | | ⊙ | WROUGHT IRON FENCE |

REFERENCES

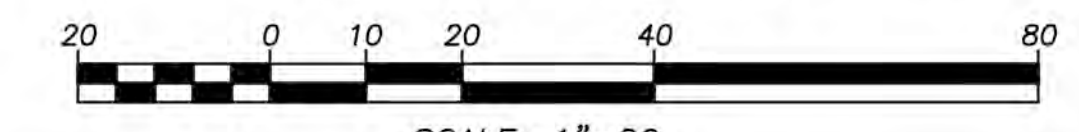
SUFFOLK COUNTY REGISTRY OF DEEDS	
BOOK	PAGE
9636	83
18253	90
32748	310
PLAN BOOK	
9636	83
16640	1
17190	336
17719	44
20691	126
2005	574
CITY OF BOSTON ENGINEERING DEPARTMENT	
FIELD BOOK	PAGE
588	80
665	129
757	53-54
SOUTH END PROJECT R-56 SHEETS 22-23	
PLAN NO.	
K-710	
L-12149	
L-12150	
L-12151	
MASSACHUSETTS HIGHWAY DEPARTMENT	
STATE HIGHWAY LAYOUT	
4270	
4566	
7105	
7632	

- NOTES:**
- BENCHMARK INFORMATION:
 - BENCHMARK USED: LEFT OUTER CORNER, LOWER STONE STEP, #615 ALBANY STREET. ELEVATION = 17.19 BOSTON CITY BASE
 - TBM-A: CROW'S FOOT SET ON FACE OF BRICK WALL 4' UP. ELEVATION = 22.14 (SEE JOB #10531)
 - TBM-U: BOLT OVER THE MAIN OUTLET OF HYDRANT. ELEVATION = 19.30 (SEE JOB #10531)
 - TEMPORARY BENCHMARKS SET:
 - TBM-MED-1: RIGHT BOLT OVER MAIN OUTLET OF HYDRANT ON THE SOUTH SIDE OF ALBANY STREET AT #650 ALBANY STREET. ELEVATION = 18.67
 - TBM-MED-2: RIGHT BOLT OVER MAIN OUTLET OF HYDRANT ON THE NORTH SIDE OF ALBANY STREET AT THE INTERSECTION OF EAST NEWTON STREET. ELEVATION = 19.28
 - TBM-MED-3: LEFT BOLT OVER MAIN OUTLET OF HYDRANT ON THE SOUTH SIDE OF ALBANY STREET ACROSS FROM #725, AS SHOWN ON PLAN. ELEVATION = 18.96
 - TBM-MED-4: LEFT BOLT OVER MAIN OUTLET OF HYDRANT ON THE NORTH SIDE OF HARRISON AVENUE AT THE CORNER OF WORCESTER SQUARE. ELEVATION = 17.26
 - TBM-MED-5: X-CUT IN HYDRANT ON THE EAST SIDE OF EAST CONCORD STREET AT THE CORNER OF HARRISON AVENUE, AS SHOWN ON PLAN. ELEVATION = 17.61
 - TBM-MED-6: RIGHT BOLT OVER MAIN OUTLET OF HYDRANT ON THE EAST SIDE OF EAST NEWTON STREET AT THE INTERSECTION OF HARRISON AVENUE. ELEVATION = 17.99
 - TBM-MED-7: RIGHT BOLT OVER MAIN OUTLET OF HYDRANT APPROXIMATELY 40 FEET SOUTH OF FGH BUILDING, AS SHOWN ON PLAN. ELEVATION = 20.03
 - TBM-MED-8: CHISELED SQUARE ON GRANITE WALL, WEST CORNER OF COURTYARD. ELEVATION = 19.14 (AS SHOWN ON PLAN)
 - ELEVATIONS REFER TO BOSTON CITY BASE.
 - 131,612 SQ. FT. OR 3.021 ACRES REPRESENTS THE SUM OF THE AREAS OF ASSESSOR'S PARCELS 0801067010, 0801067015, 0801067020, AND 0801066020.
 - DASHED UTILITY LINES ARE SHOWN UNLABELED ON PLAN ENTITLED "SITE UTILITIES PLAN" DRAWING NUMBER C-004 BY TK&A. EXISTENCE UNKNOWN.
 - UTILITY INFORMATION SHOWN IS BASED ON BOTH A FIELD SURVEY AND PLANS OF RECORD. THE LOCATIONS OF UNDERGROUND PIPES AND CONDUITS HAVE BEEN DETERMINED FROM THE AFOREMENTIONED RECORD PLANS AND ARE APPROXIMATE ONLY. WE CANNOT ASSUME RESPONSIBILITY FOR DAMAGES INCURRED AS A RESULT OF UTILITIES THAT ARE OMITTED OR INACCURATELY SHOWN ON SAID RECORD PLANS, SINCE SUB-SURFACE UTILITIES CANNOT BE VISIBLY VERIFIED. BEFORE PLANNING FUTURE CONNECTIONS, THE PROPER UTILITY ENGINEERING DEPARTMENT SHOULD BE CONSULTED AND THE ACTUAL LOCATION OF SUB-SURFACE STRUCTURES SHOULD BE DETERMINED IN THE FIELD. CALL, TOLL FREE, THE DIG SAFE CALL CENTER AT 1-888-344-7233 SEVENTY-TWO HOURS PRIOR TO EXCAVATION.
 - INTERIOR FLOOR ELEVATIONS ARE LABELED FFE.
 - UTILITY INFORMATION SHOWN AS (GPR), (PUL) OR "INFERRED" AS WELL AS GPR SURVEY EXTENTS SHOWN ARE TAKEN FROM A PLAN ENTITLED "GEOPHYSICAL SURVEY, GPR AND PUL INTERPRETATION MAP, BOSTON MEDICAL CENTER, MOAKLEY ADDITION PROJECT, BOSTON, MA" AND "GEOPHYSICAL SURVEY, GPR AND PUL INTERPRETATION MAP, BOSTON MEDICAL CENTER, MENINO EXPANSION PROJECT, BOSTON, MA" PREPARED BY HAGER GEOSCIENCE, INC. DATED MARCH 2014. REFER TO SAID PLANS FOR ADDITIONAL NOTES. SEE SHEET 4 FOR SPECIFIC HGI LEGEND.
 - RECORD DRAIN MANHOLE, RIM, AND INVERT ELEVATIONS WERE TAKEN FROM A PLAN ENTITLED "SITE UTILITY AS-BUILT PLAN, BIOSQUARE PARKING GARAGE" PREPARED BY JAMES W. FLETT, PROVIDED BY BOSTON WATER AND SEWER COMMISSION AS FILE NUMBER 0507501.

PARTIAL EXISTING CONDITIONS SURVEY 774 ALBANY STREET BOSTON, MASS.

FELDMAN LAND SURVEYORS NOVEMBER 11, 2019
152 HAMPDEN STREET PHONE: (617)357-9740
BOSTON, MASS. 02119 www.feldmansurveyors.com

FELDMAN X-005
LAND SURVEYORS



RESEARCH	FIELD CHIEF AC	PROJ MGR DJR	APPROVED	SHEET NO. 1 OF 1
CALC	CADD UK	FIELD CHECKED AC	CRD FILE 16871	JOB NO. 17151
FILENAME: S:\PROJECTS\171006\17151\DWG\17151-EC.dwg				

OWNER

**City of Boston
 Public Health Commission**
 PROJECT # 7152

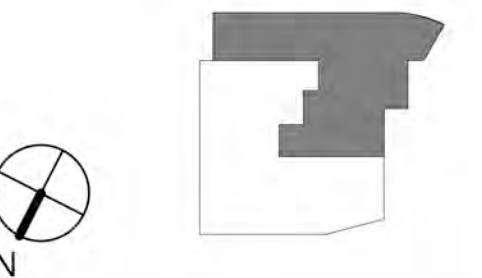
ISSUE DATES

DATE	BY	DESCRIPTION
11-12-2019	JMT	SCHEMATIC DESIGN
02-20-2020	JMT	DESIGN DEVELOP.
04-08-2020	JMT	95% CONSTR. DOC.
06-17-2020	JMT	100% CONSTR. DOC.
07-30-2020	JMT	ADDENDUM 2 - 2

PROJECT

Woods Mullen Addition Renovation & Elevator Project

794 Massachusetts Ave.
 Boston, MA



JOB NUMBER 18-675
 SCALE 1/16" = 1'-0"
 DRAWING NAME

**SITE PLAN WITH
 PROPOSED BUILDING**

DRAWING NO.

A-001



OWNER

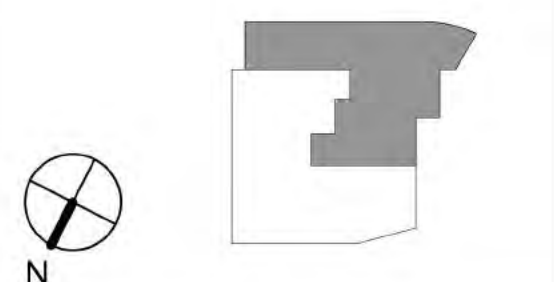
City of Boston
 Public Health Commission
 PROJECT # 7152

ISSUE DATES

DATE	BY	DESCRIPTION
12-12-2019	JMT	SCHEMATIC DESIGN
02-20-2020	JMT	DESIGN DEVELOP.
04-08-2020	JMT	95% CONSTR. DOC.
05-04-2020	JMT	100% CONSTR. DOC.

PROJECT

**Woods Mullen
 Addition
 Renovation &
 Elevator Project**
 794 Massachusetts Ave.
 Boston, MA



JOB NUMBER 18-675
 SCALE 1/8" = 1'-0"

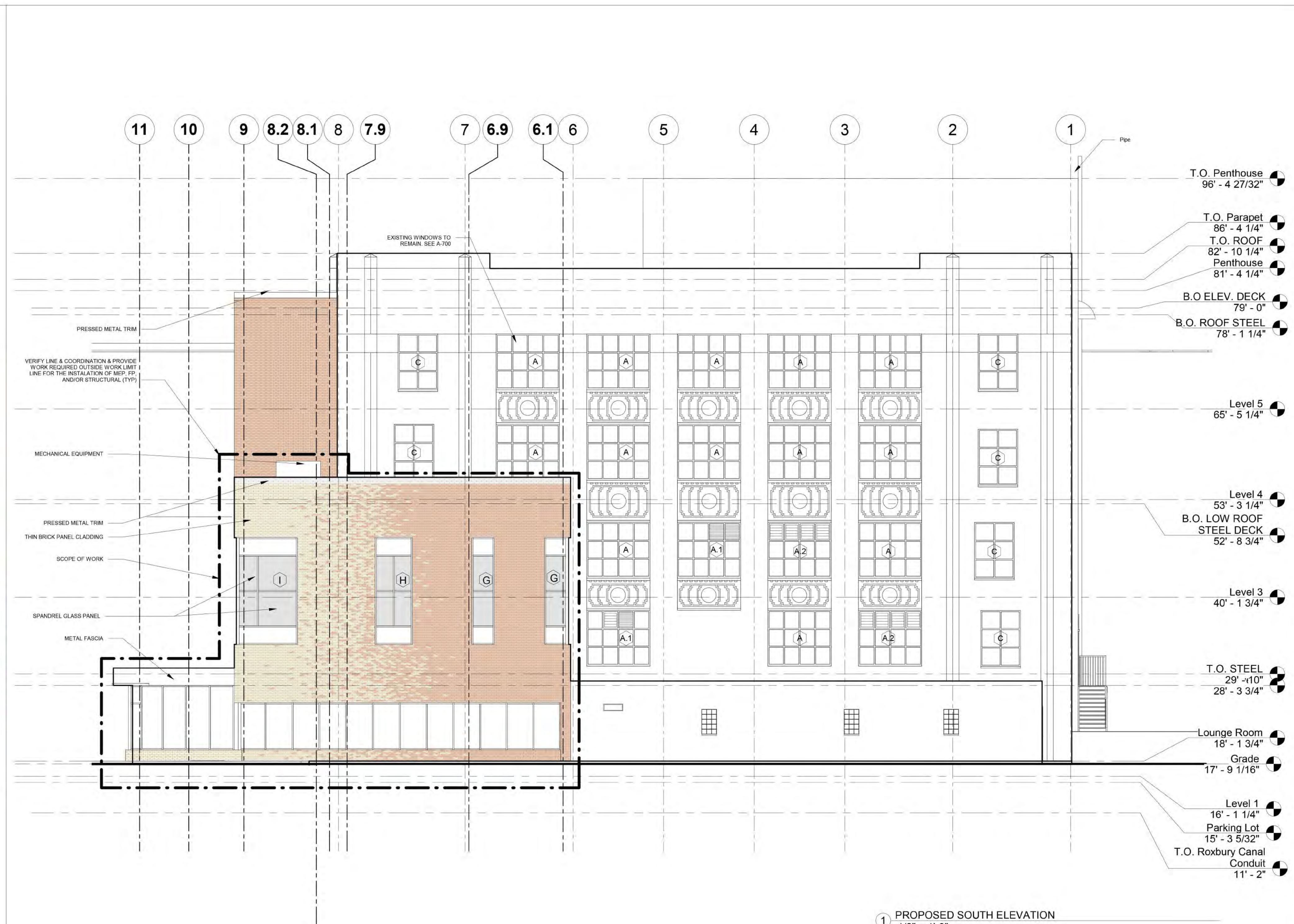
DRAWING NAME

DRAWING NO.

A-300



PHOTO OF EXISTING SOUTH ELEVATION
 NTS



PROPOSED SOUTH ELEVATION
 1/8" = 1'-0"

OWNER

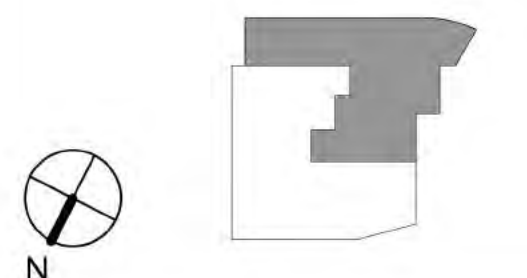
City of Boston
 Public Health Commission
 PROJECT # 7152

ISSUE DATES

DATE	BY	DESCRIPTION
12-12-2019	JMT	SCHEMATIC DESIGN
02-20-2020	JMT	DESIGN DEVELOP.
04-08-2020	JMT	95% CONSTR. DOC.
05-04-2020	JMT	100% CONSTR. DOC.

PROJECT

**Woods Mullen
 Addition
 Renovation &
 Elevator Project**
 794 Massachusetts Ave.
 Boston, MA



JOB NUMBER 18-675
 SCALE 1/8" = 1'-0"

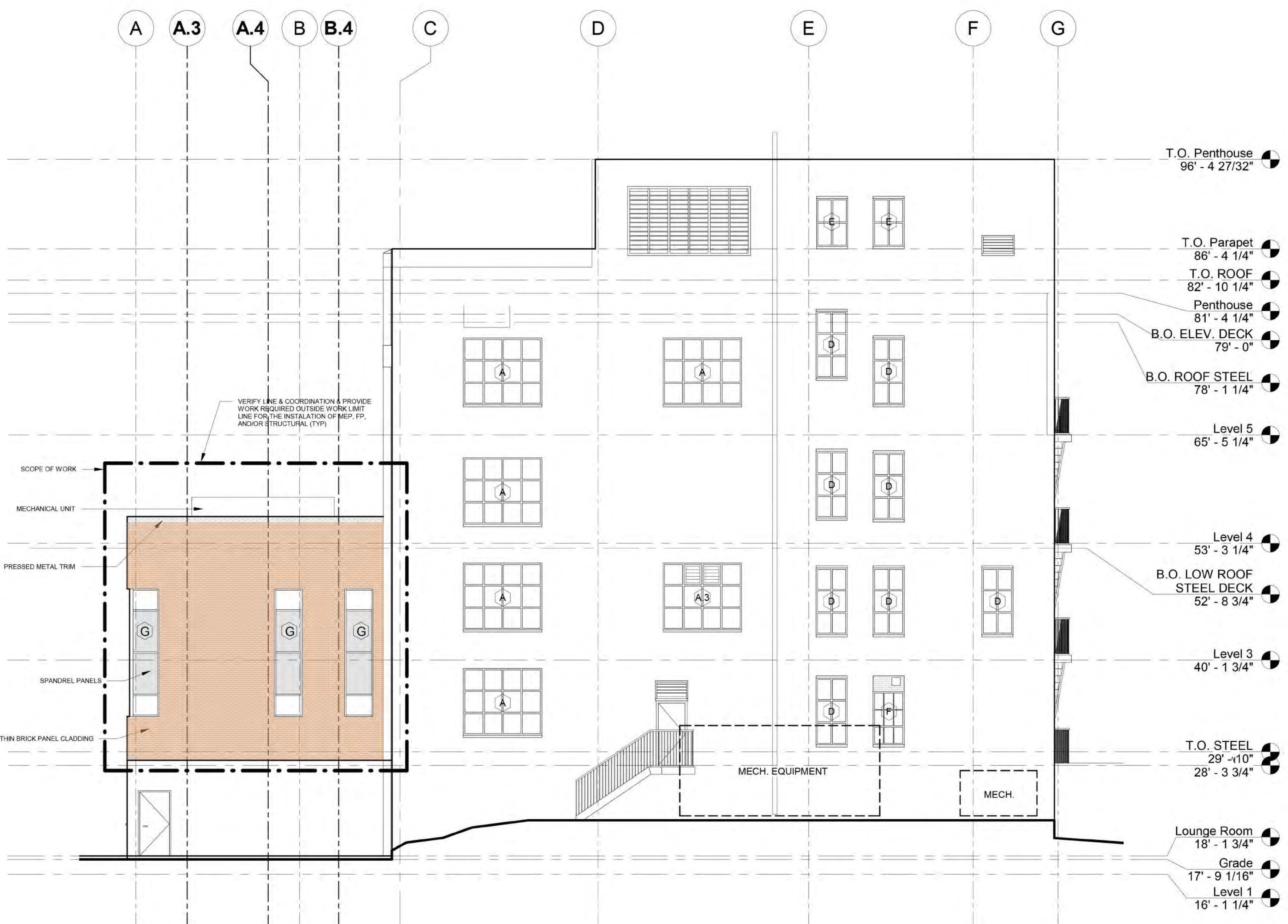
DRAWING NAME
EAST ELEVATION

DRAWING NO.

A-303



PHOTO OF EXISTING EAST ELEVATION
 NTS



East Elevation
 1/8" = 1'-0"