

REPLACE DETERIORATED EXTERIOR SHUTTERS WITH APPROPRIATE NEW :

1. WOOD
2. PAINTED PER BHAC COLOR APPROVAL
3. HISTORIC HARDWARE: PINTLE BRACKETS AND SHUTTER DOGS
4. SIZED TO MATCH MASONRY OPENINGS
5. DOUBLE HINGED PAIR EACH SIDE @ LR WINDOW

REPLACE DETERIORATED WOOD SASH WITH MARVIN SINGLE GLAZED TRUE DIVIDED LIGHT WOOD WINDOW SASH AND FRAMES.

EXISTING
CHESTNUT STREET ELEVATION

SK-13

Frank McGuire Architects

Architecture . Planning . Programming

drawing.....CHESTNUT STREET ELEVATION

project.....DIXON RESIDENCE

scale..... $\frac{1}{4}''=1'-0''$ date.....5/22/20

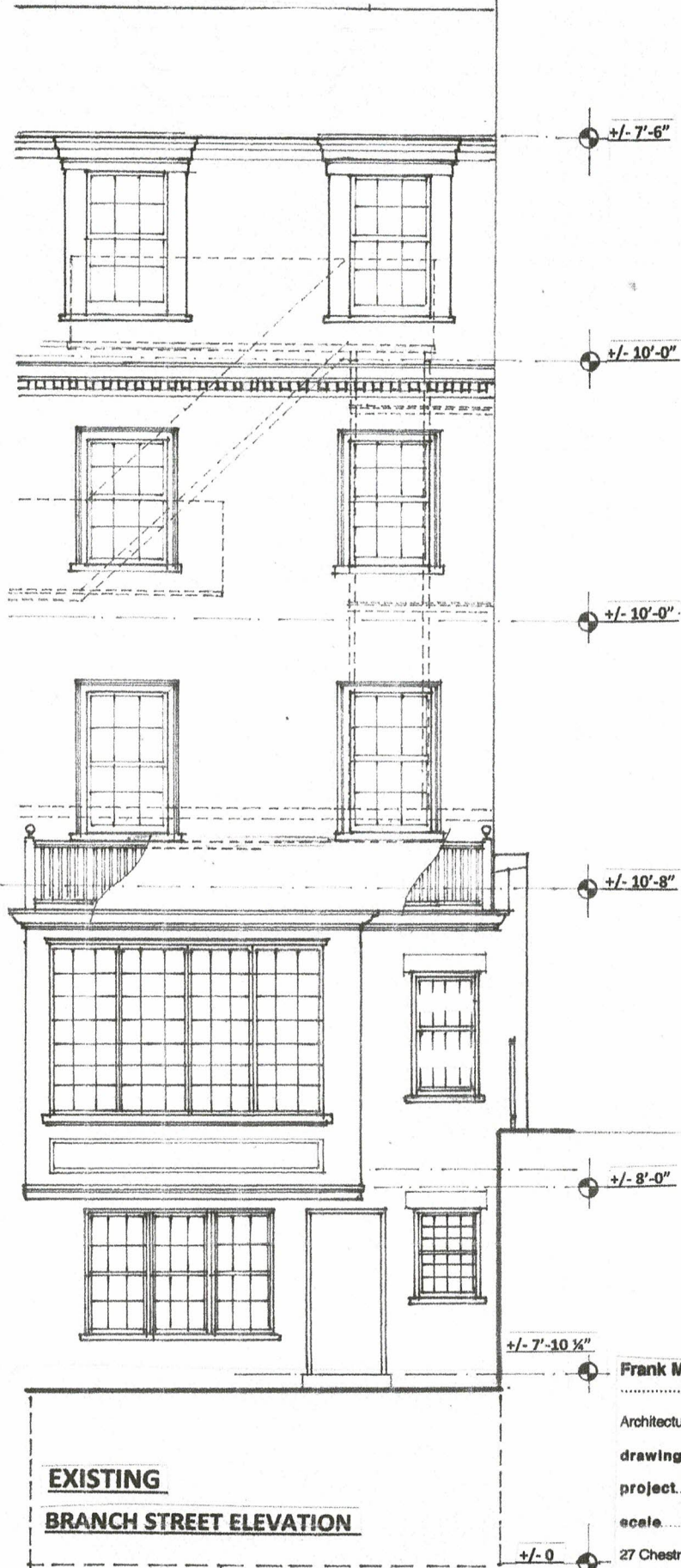
27 Chestnut Street . Boston MA 02108

tel (o).....617.742.4249

tel (m).....617.851.8090

fax.....617.227.1761

email.frankmcguirearchitects@comcast.net



EXISTING
BRANCH STREET ELEVATION

SK-11

Frank McGuire Architects

Architecture . Planning . Programming

drawing **BRANCH STREET ELEVATION**

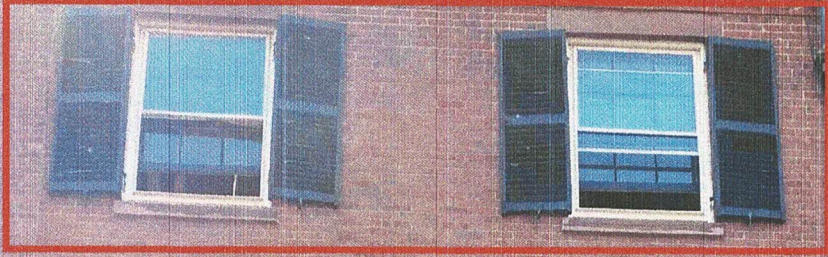
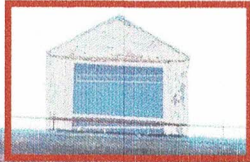
project **DIXON RESIDENCE**

scale $\frac{1}{8}'' = 1'-0''$ date *5/29/20*

27 Chestnut Street . Boston MA 02108

tel (o).....617.742.4249
tel (m).....617.851.8090
fax.....617.227.1761
email.frankmcguirearchitects@comcast.net

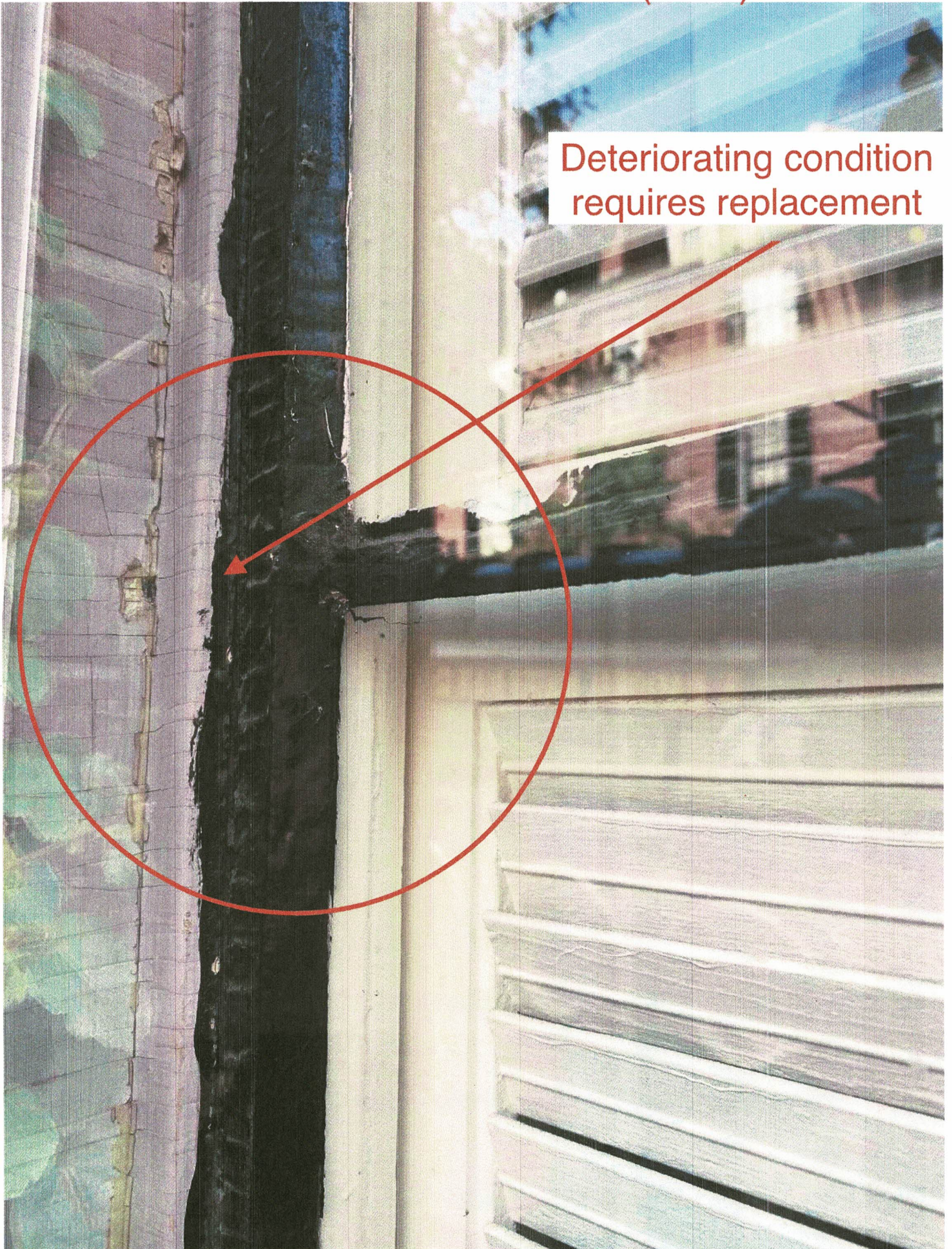
View from front
of building



View from rear
of building



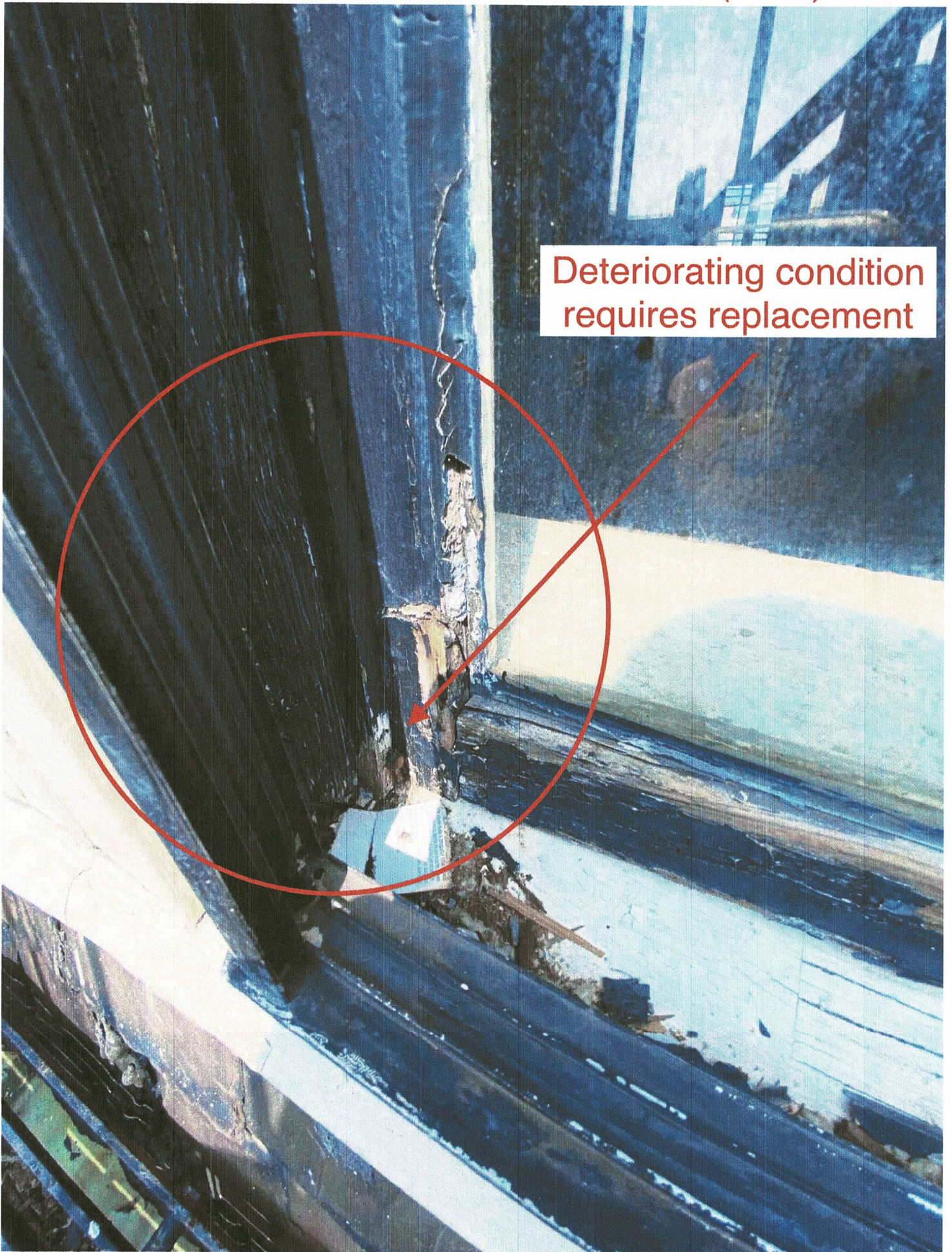
62 Chestnut- 1st Fl Window (Front)



Deteriorating condition
requires replacement

62 Chestnut- 4th Fl Window Jamb (Rear)

Deteriorating condition
requires replacement

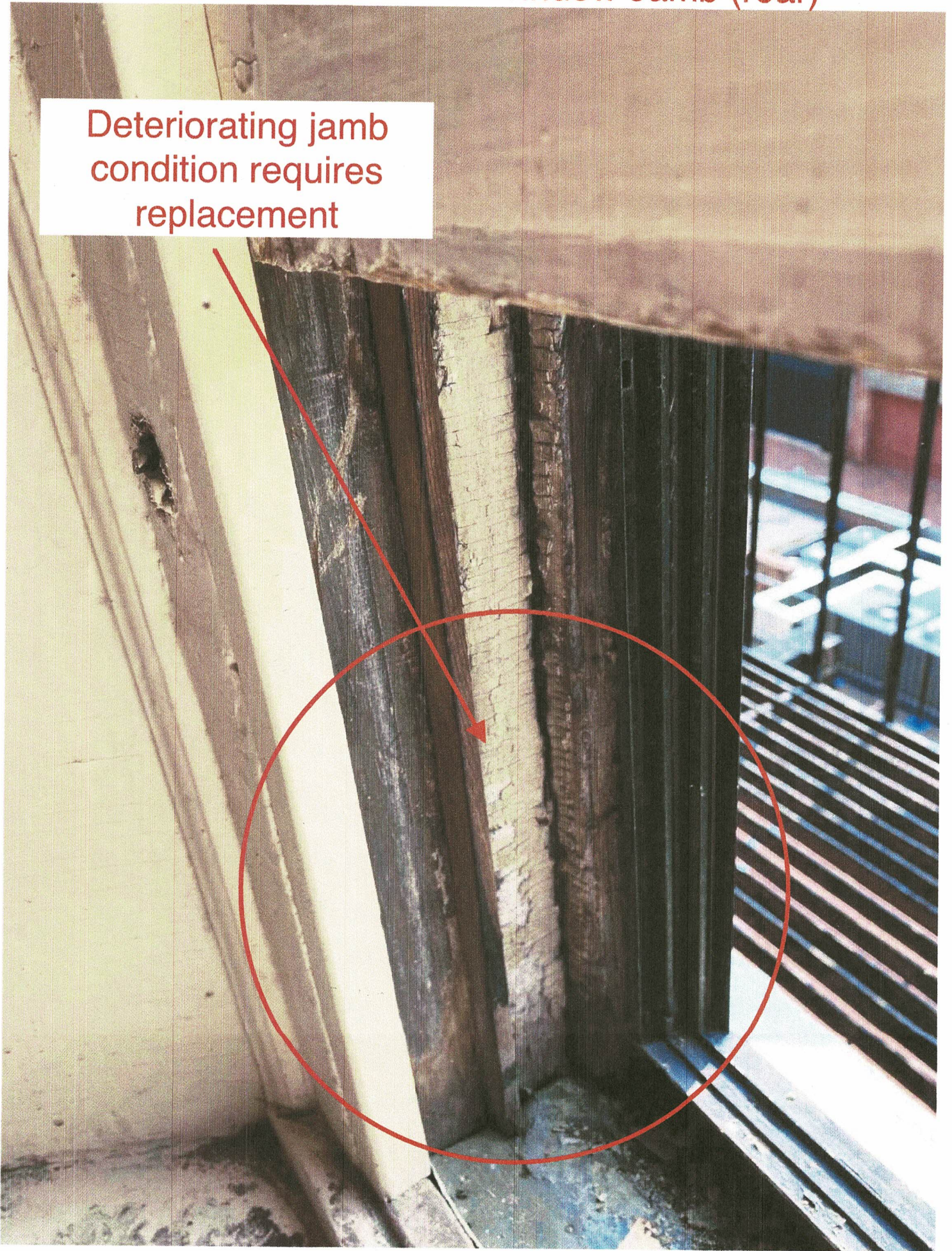


62 Chestnut- 4th Fl Window (rear)



62 Chestnut- 3rd Fl Window Jamb (rear)

Deteriorating jamb
condition requires
replacement



62 Chestnut- 1st Fl Window (Front)

Deteriorating condition
requires replacement



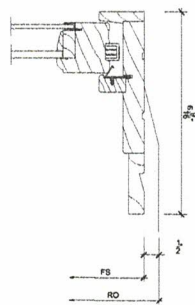
62 Chestnut- 3rd Fl Window (front)



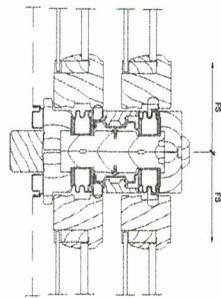
LOWER UNIT MUNTINS CONDITION



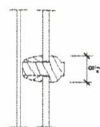
NOTE REMOVABLE NARROW PROFILE STORM PANELS IN LIEU OF TYPICAL APPLIED ALUMINUM STORMS



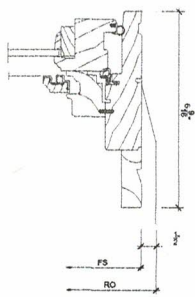
1 Head
SCALE: 3" = 1'-0"



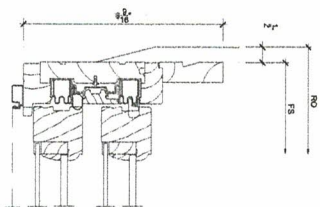
3 Vertical Mullion
SCALE: 3" = 1'-0"



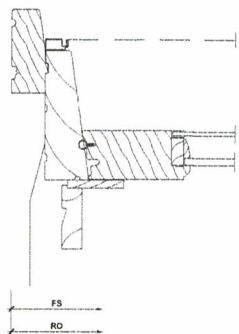
5 Divided Lite
SCALE: 3" = 1'-0"



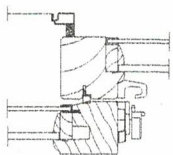
7 Head
SCALE: 3" = 1'-0"



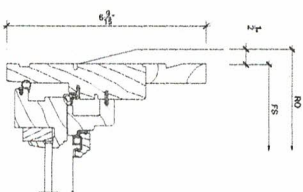
2 Jamb
SCALE: 3" = 1'-0"



4 Sill
SCALE: 3" = 1'-0"



6 Checkrail
SCALE: 3" = 1'-0"

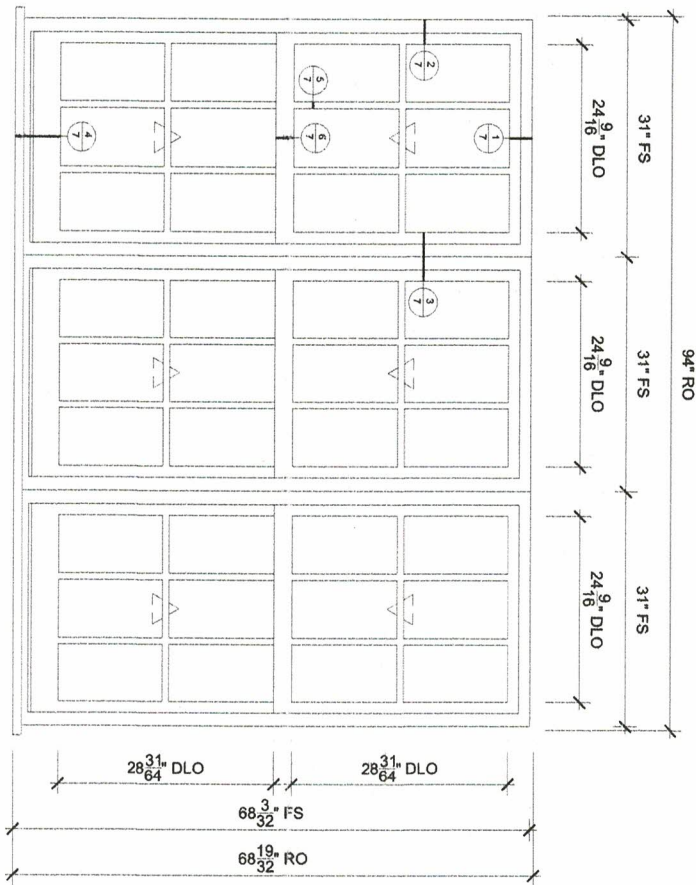


8 Jamb
SCALE: 3" = 1'-0"

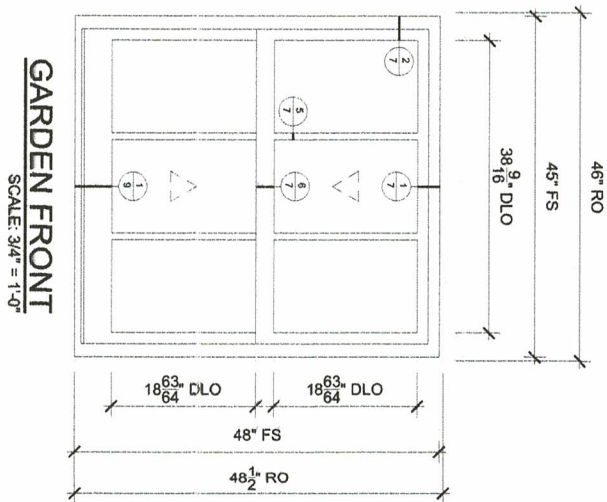
PROJ/JOB: SLEEPING DOG PROPERTIES / 62 CHESTNUT ST, BOSTON ALT &G/ADL
 DIST/DEALER: WOODBURY SUPPLY, A MARVIN DESIGN GALLERY
 DRAWN: REED RAPPOLI
 QUOTE#: W4NY54P PK VER:0003.04.00 CREATED: 09/16/2020 REVISION:

ORDERING PRODUCTS WITH REFERENCE TO SHOP DRAWINGS:
 Before ordering the Marvin products illustrated within these shop drawings, a copy of these drawings accompanied by an approved signature of the purchaser must be returned to the Architectural Division at Marvin Windows & Doors, P.O. Box 100, Waukegan, Minnesota 55783. If the Marvin products included herein are ordered without reference to the approved shop drawings, Marvin Windows and Doors assumes no responsibility in guaranteeing product coordination with the drawings.

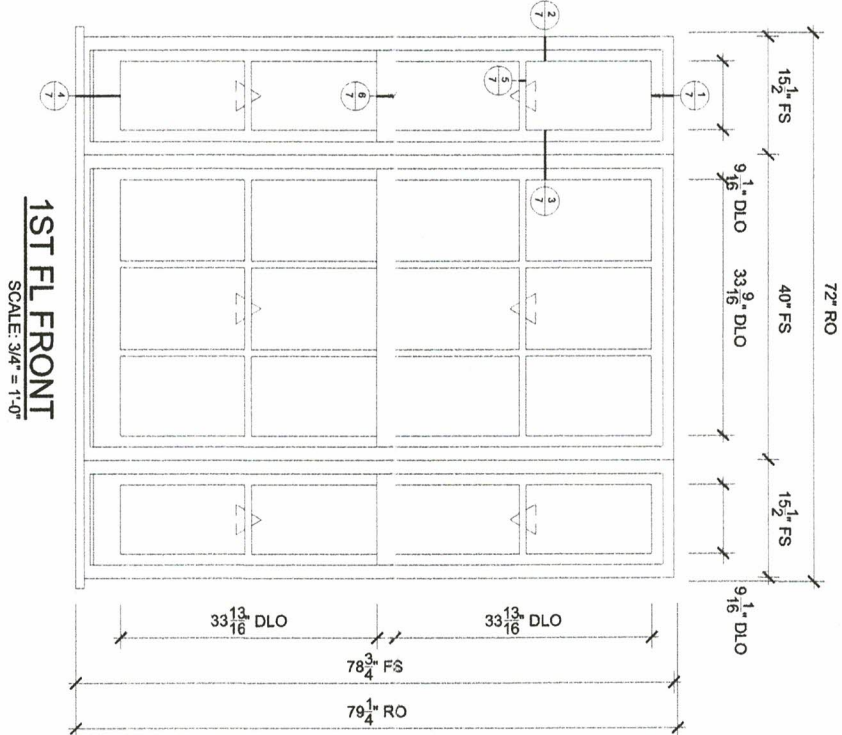




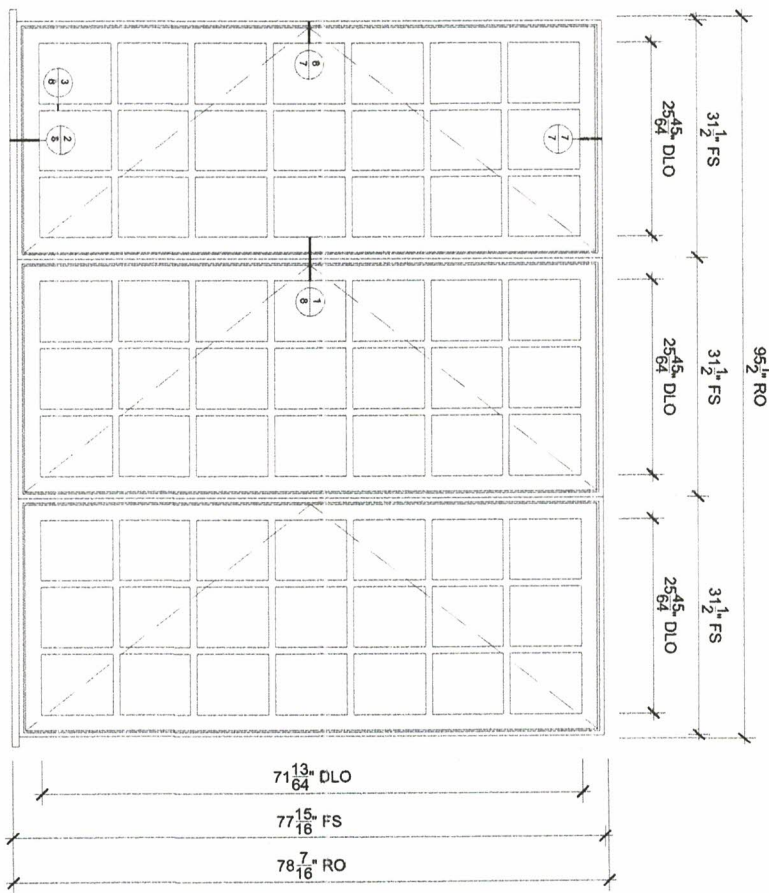
GARDEN REAR
SCALE: 3/4" = 1'-0"



GARDEN FRONT
SCALE: 3/4" = 1'-0"



1ST FL FRONT
SCALE: 3/4" = 1'-0"



1ST FL REAR
SCALE: 3/4" = 1'-0"

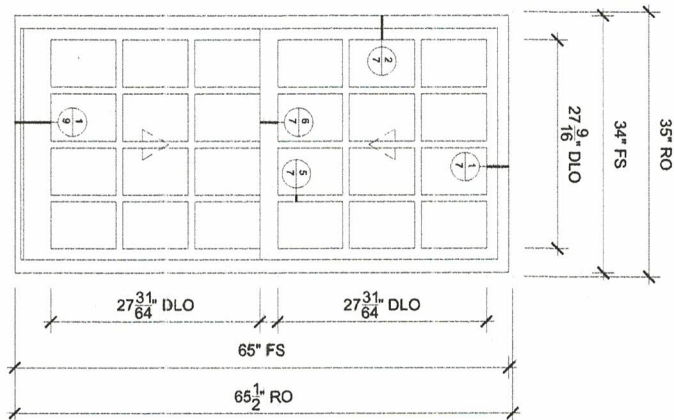
NOTE:

4 UNITS IN THIS LOCATION, NOT 3, TO MATCH EXISTING OPENING.

ORDERING PRODUCTS WITH REFERENCE TO SHOP DRAWINGS:
 Before ordering the Marvin products illustrated within these shop drawings, a copy of these drawings accompanied by an approved signature of the purchaser must be returned to the Architectural Division at Marvin Windows & Doors, P.O. Box 100, Warroad, Minnesota 56763. If the Marvin products included herein are ordered without reference to the approved shop drawings, Marvin Windows and Doors assumes no responsibility in guaranteeing product coordination with the drawings.



1ST FL REAR KITCHEN
SCALE: 3/4" = 1'-0"



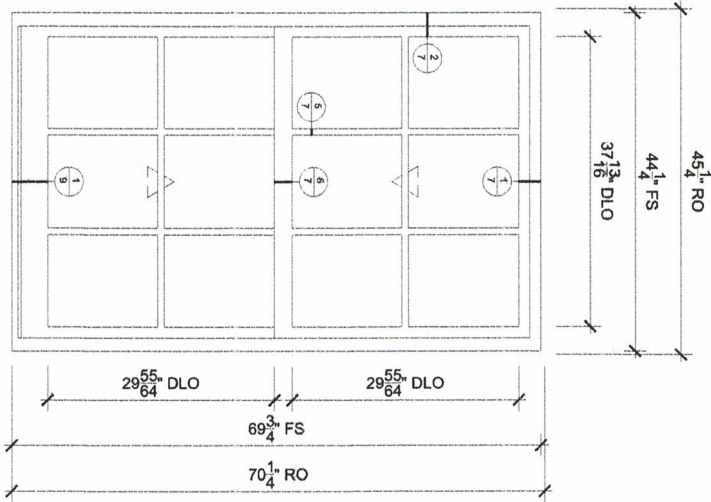
OF: 10
SHEET
2

PROJ/JOB: SLEEPING DOG PROPERTIES / 62 CHESTNUT ST, BOSTON ALT @G/ADL
 DIST/DEALER: WOODBURY SUPPLY, A MARVIN DESIGN GALLERY
 DRAWN: REED RAPPOLI
 QUOTE#: W4NY54P PK VER:0003.04.00 CREATED: 09/16/2020 REVISION:

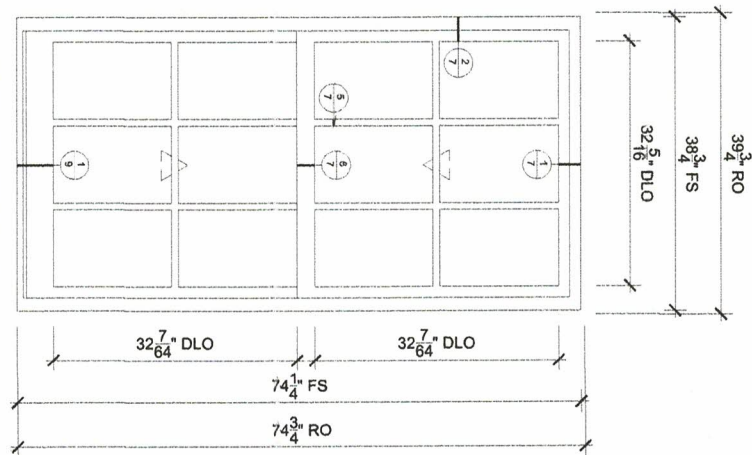
ORDERING PRODUCTS WITH REFERENCE TO SHOP DRAWINGS:
 Before ordering the Marvin products illustrated within these shop drawings, a copy of these drawings accompanied by an approved signature of the purchaser must be returned to the Architectural Division at Marvin Windows & Doors, P.O. Box 100, Warroad, Minnesota 56763. If the Marvin products included herein are ordered without reference to the approved shop drawings, Marvin Windows and Doors assumes no responsibility in guaranteeing product coordination with the drawings.



2ND FL REAR
SCALE: 3/4" = 1'-0"



2ND FL FRONT
SCALE: 3/4" = 1'-0"



OF 10

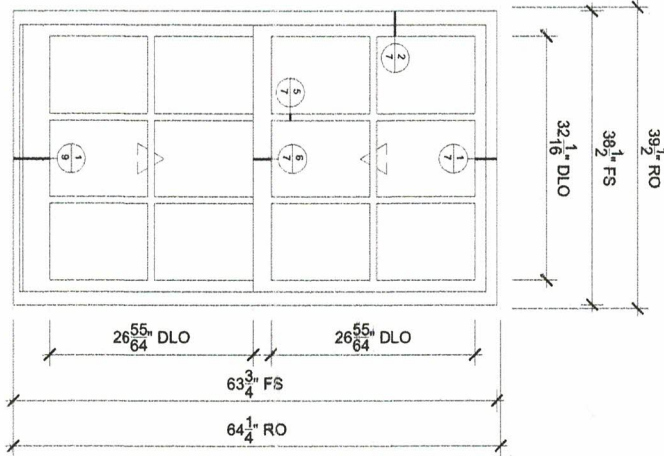
SHEET 4

PROJ/JOB: SLEEPING DOG PROPERTIES / 62 CHESTNUT ST, BOSTON ALT #G/ADL
 DIST/DEALER: WOODBURY SUPPLY, A MARVIN DESIGN GALLERY
 DRAWN: REED RAPPOLI
 QUOTE#: W4NY54P PK VER:0003.04.00 CREATED: 09/16/2020 REVISION:

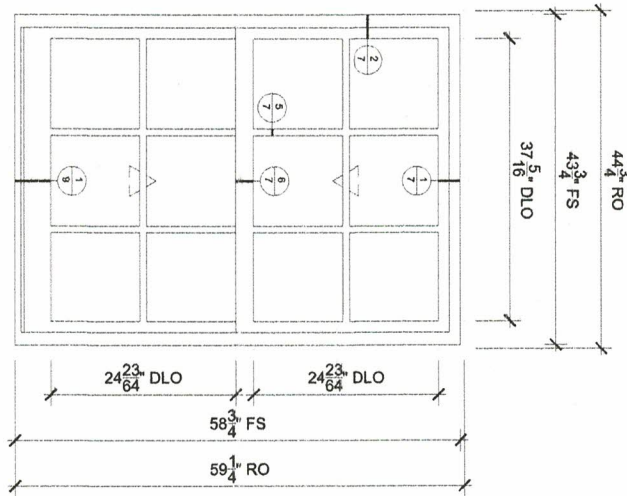
ORDERING PRODUCTS WITH REFERENCE TO SHOP DRAWINGS:
 Before ordering the Marvin products illustrated within these shop drawings, a copy of these drawings accompanied by an approved signature of the purchaser must be returned to the Architectural Division at Marvin Windows & Doors, P.O. Box 100, Watwood, Minnesota 55763. If the Marvin products included herein are ordered without reference to the approved shop drawings, Marvin Windows and Doors assumes no responsibility in guaranteeing product coordination with the drawings.



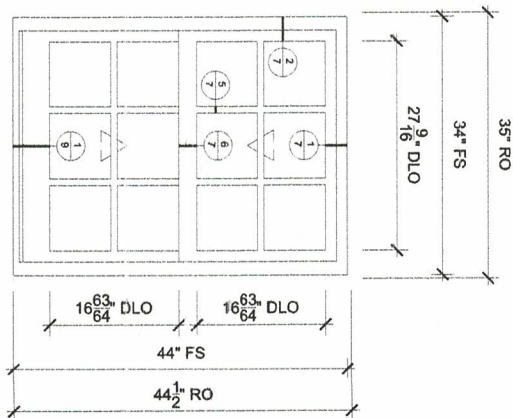
3RD FL FRONT
SCALE: 3/4" = 1'-0"



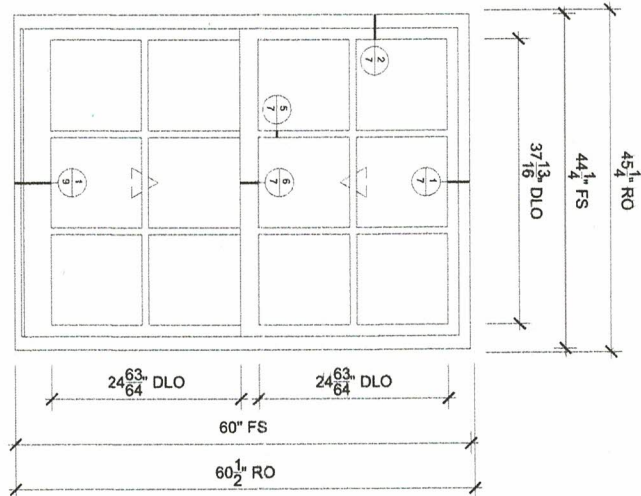
3RD FL REAR
SCALE: 3/4" = 1'-0"



4TH FL FRONT
SCALE: 3/4" = 1'-0"



4TH FL REAR
SCALE: 3/4" = 1'-0"



OF 10

SHEET

6

PROJ/JOB: SLEEPING DOG PROPERTIES / 62 CHESTNUT ST, BOSTON ALT &G/ADL
 DIST/DEALER: WOODBURY SUPPLY, A MARVIN DESIGN GALLERY
 DRAWN: REED RAPPOLI
 QUOTE#: W4NY54P PK VER:0003.04.00 CREATED: 09/16/2020 REVISION:

ORDERING PRODUCTS WITH REFERENCE TO SHOP DRAWINGS:
 Before ordering the Marvin products illustrated within these shop drawings, a copy of these drawings accompanied by an approved signature of the purchaser must be returned to the Architectural Division at Marvin Windows & Doors, P.O. Box 100, Warroad, Minnesota 56763. If the Marvin products included herein are ordered without reference to the approved shop drawings, Marvin Windows and Doors assumes no responsibility in guaranteeing product coordination with the drawings.

