

STONEWALL KITCHEN RETAIL STORE EXTERIOR MODIFICATIONS
308 CONGRESS STREET – BOSTON MA

SCOPE OF MODIFICATIONS –

- INSTALLATION OF REPURPOSED WOOD BARN DOOR AND TRACK HARDWARE
- NEW PLANTER
- NEW STORE SIGN WITH LIGHTS - MUSEUM PLAZA
- NEW DIRECTIONAL SIGN – CONGRESS STREET

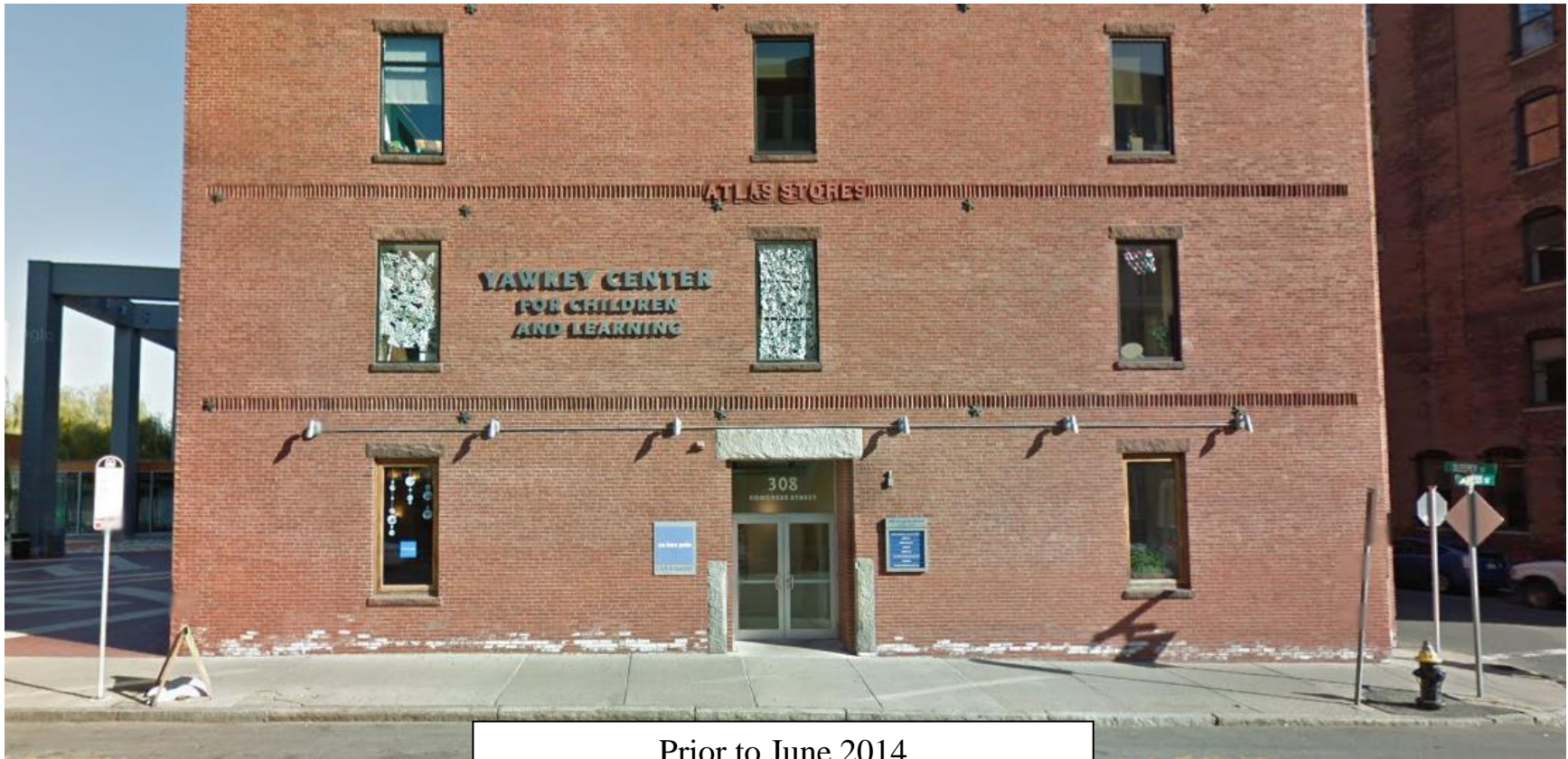
STONEWALL KITCHEN RETAIL STORE EXTERIOR MODIFICATIONS
308 CONGRESS STREET – BOSTON MA

The proposed modifications are for the purpose of providing standard Stonewall kitchen branding elements to the entrance for the new storefront. Below is an example of the branding located at the Company Store in York, ME.



STONEWALL KITCHEN RETAIL STORE EXTERIOR MODIFICATIONS
308 CONGRESS STREET – BOSTON MA

The directional sign on Congress Street is proposed to provide information to the main entrance of the store on the Museum Plaza similar to the Children’s Museums existing vertical banner. The proposed sign will match the size of the existing 308 Congress St directory and will be located at the same location of the previous tenant’s signage – see below.



Prior to June 2014

STONEWALL KITCHEN RETAIL STORE EXTERIOR MODIFICATIONS
308 CONGRESS STREET – BOSTON MA



June 2014 – August 2018 +/-



CONGRESS STREET

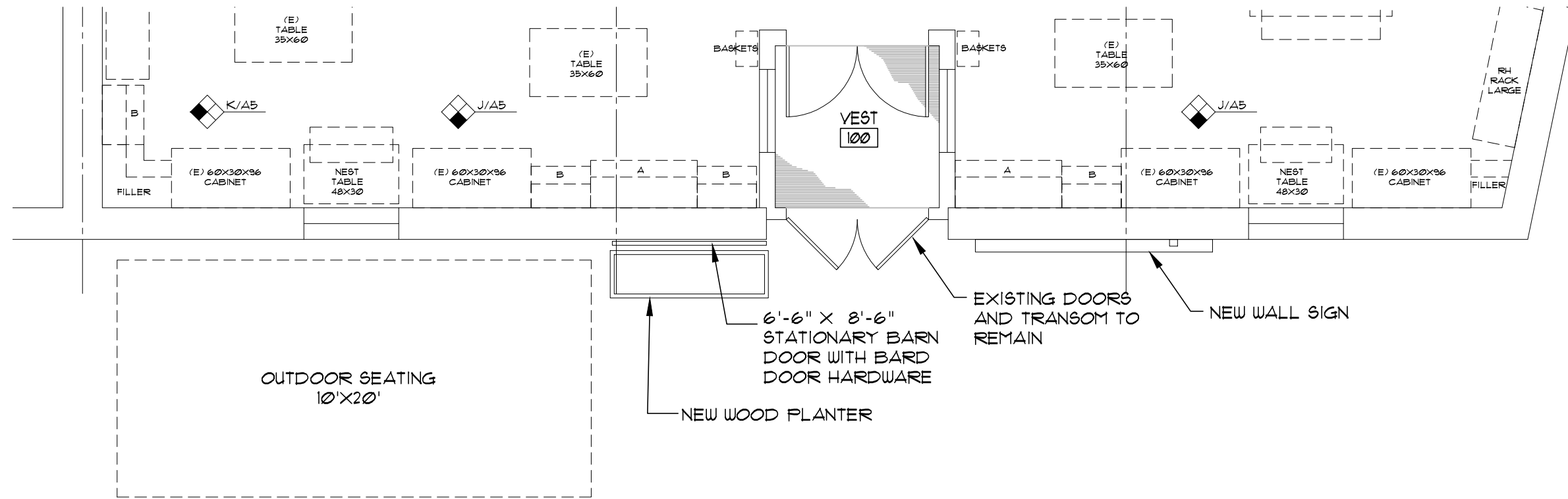


MUSEUM PLAZA

EXISTING PHOTOS

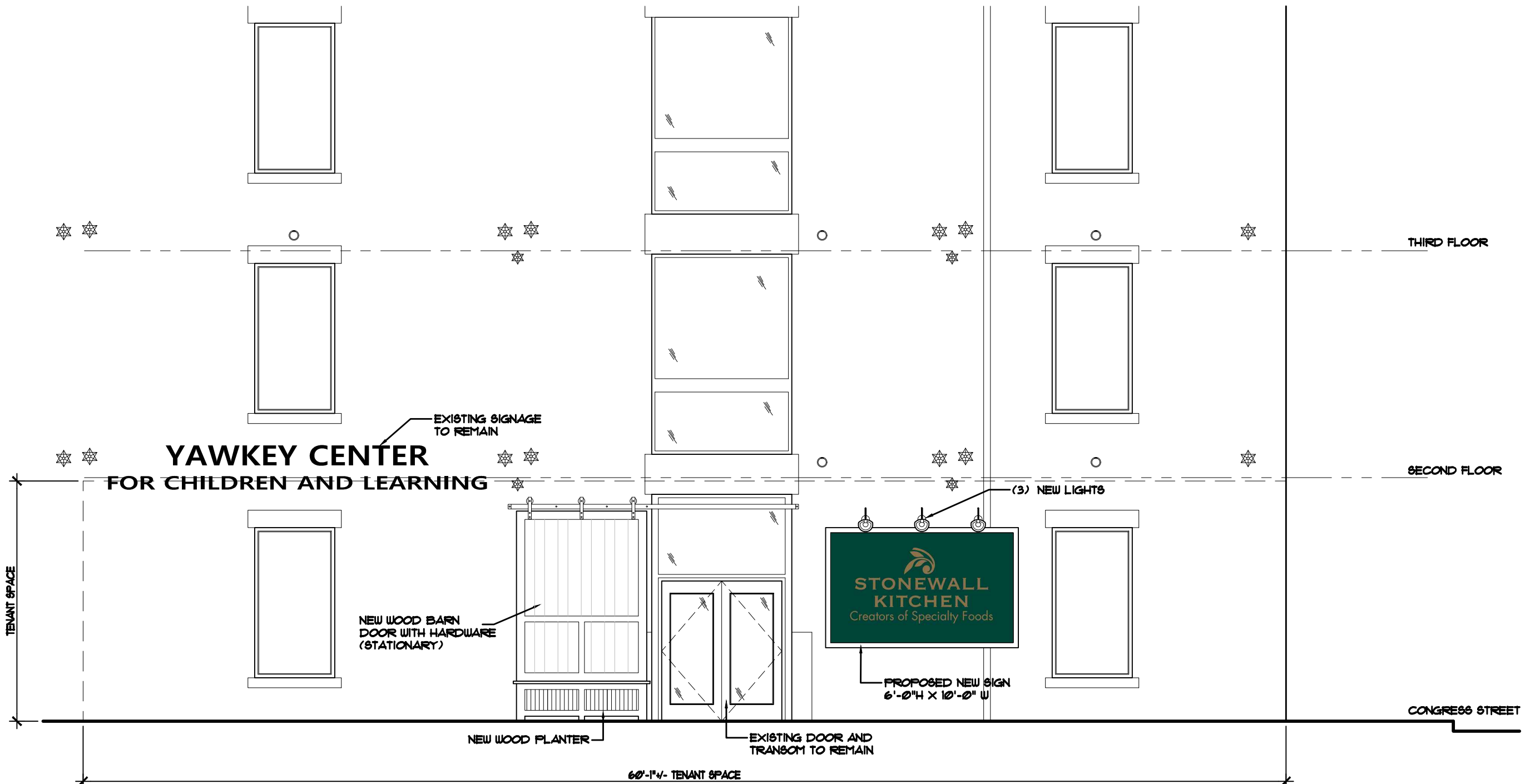
STONEWALL KITCHEN
308 CONGRESS STREET





PROPOSED PLAN

SCALE: 3/16" = 1'-0"

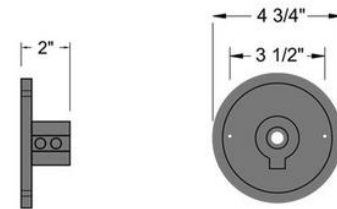


MUSEUM PLAZA
ENLARGED EXTERIOR ELEVATION
SCALE: 3/16" = 1'-0"

STONEWALL KITCHEN
308 CONGRESS STREET



Back Plate



PROPOSED WALL LIGHT

BLACK FINISH
ATTACHED AND FED AT
MORTAR JOINTS
22" +/- PROJECTION

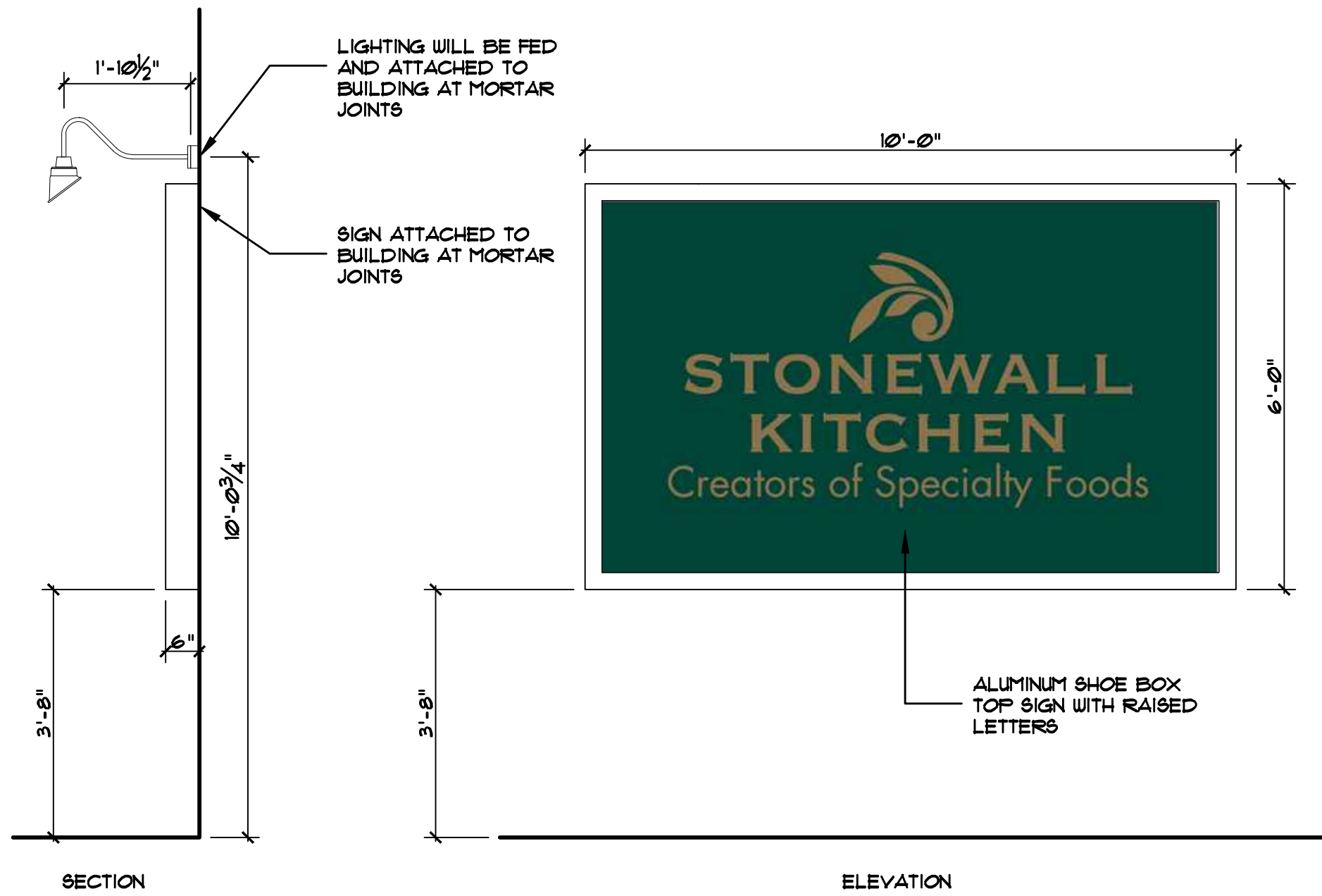


PROPOSED INSTALLED
SIGN IMAGE



PROPOSED WALL SIGN

10'-0" W X 6'-0" H
ALUMINUM SHOE BOX WITH
RAISED LETTERING
ATTACHED AT MORTAR
JOINTS
KNOTCHED AROUND
EXISTING DOWN SPOUT



B PROPOSED SIGN
 SCALE: 1/2" = 1'-0"



PROPOSED BARN DOOR
 HARDWARE
 EXTERIOR RATED
 COLOR – BLACK
 ATTACHED AT MORTAR
 JOINTS
 STATIONARY DOOR

Outdoor Rated - Exterior Barn Door Hardware

Rustica's exterior barn door hardware is guaranteed for outdoor use and will withstand the elements. Our best selling outdoor rated barn door hardware style, the Rustica Stag Classic Barn Door Hardware comes with heavy-duty, industrial sealed bearings. The oven-baked exterior grade powder coating seal is a super durable lifetime finish that will look great outdoors for years to come.

Our exterior barn door hardware comes with patented adjustable sliding door spacers. The outdoor rated barn door hardware used for installation comes standard with an exterior grade plated finish. Exterior sliding barn door hardware kits come with everything you need to install an outdoor rated door. You can choose from any length of track that is needed for installing an exterior barn door hardware system outside. This classic outdoor style is characterized by its straight bottom edge and substantial metal strap that loops completely over the top of the wheel, the Stag industrial exterior barn door hardware is an unfussy workhorse. The wheel peeks out from either side of the strap as it rolls along the track, enhancing the unique look.

STONEWALL KITCHEN
 308 CONGRESS STREET

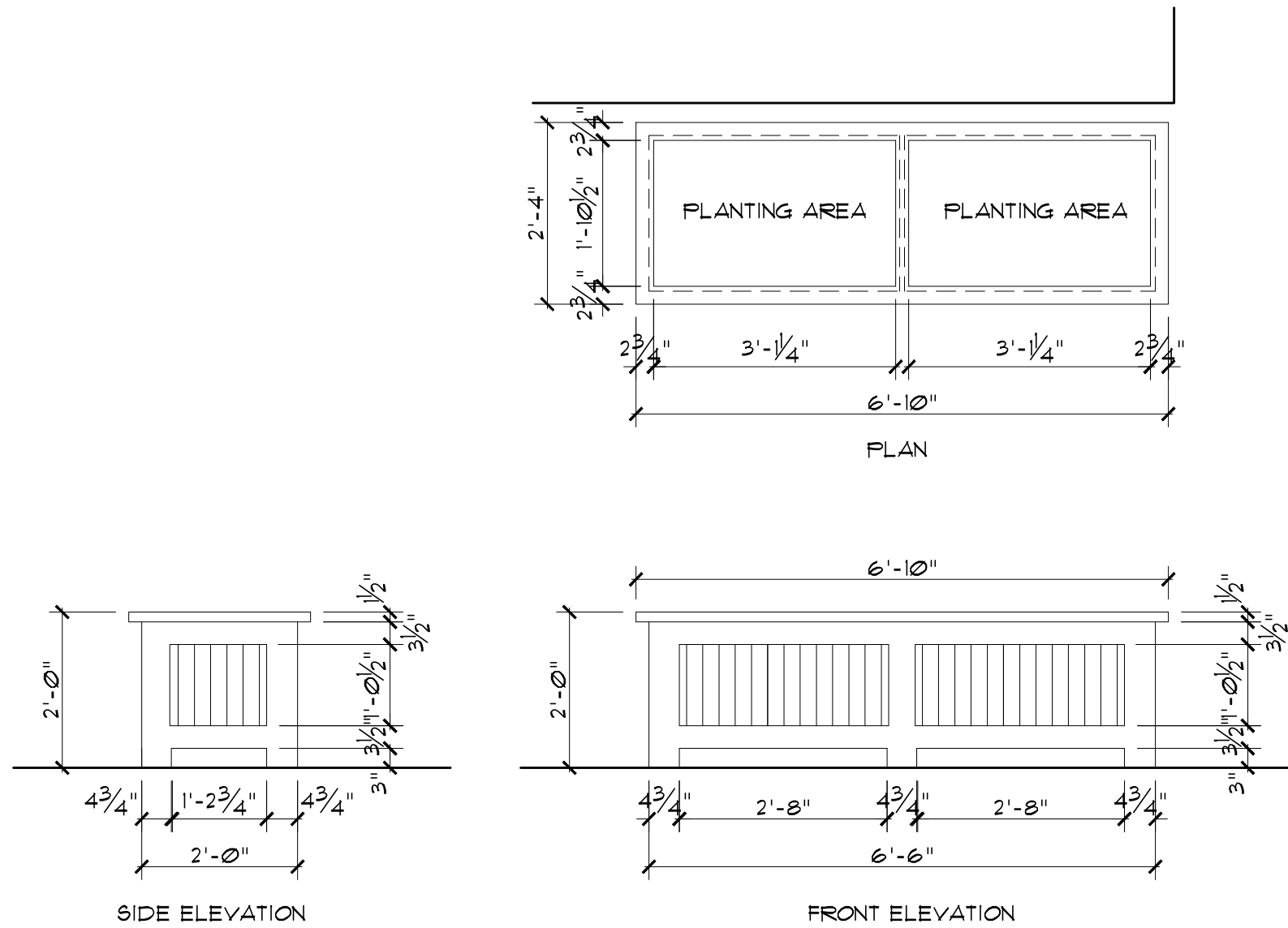


PROPOSED BARN DOOR



PROPOSED BARN DOOR
 INSTALLED IMAGES

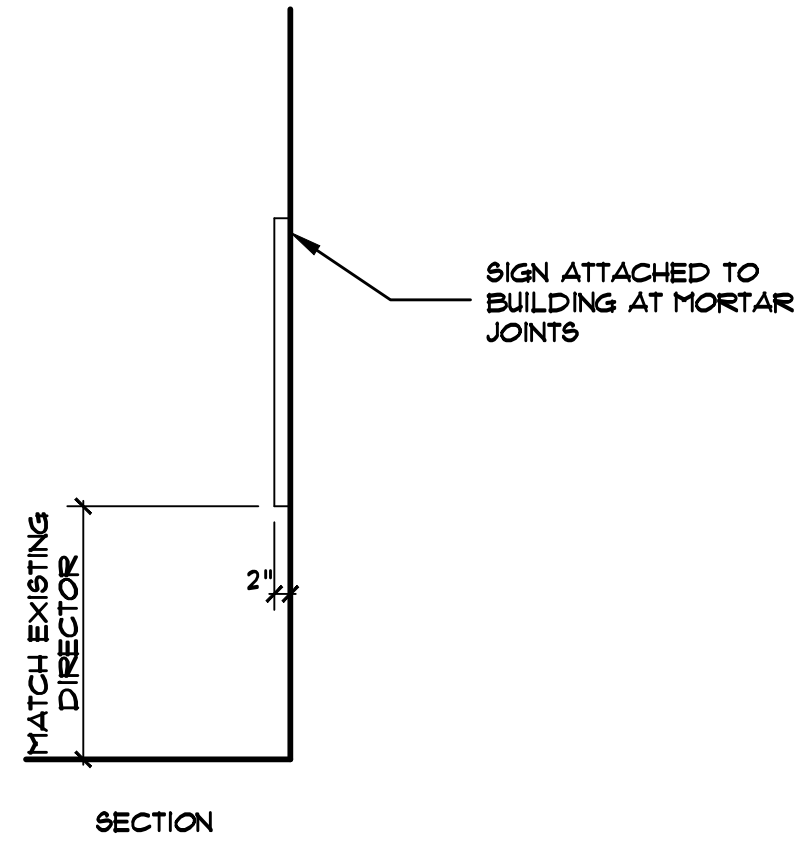
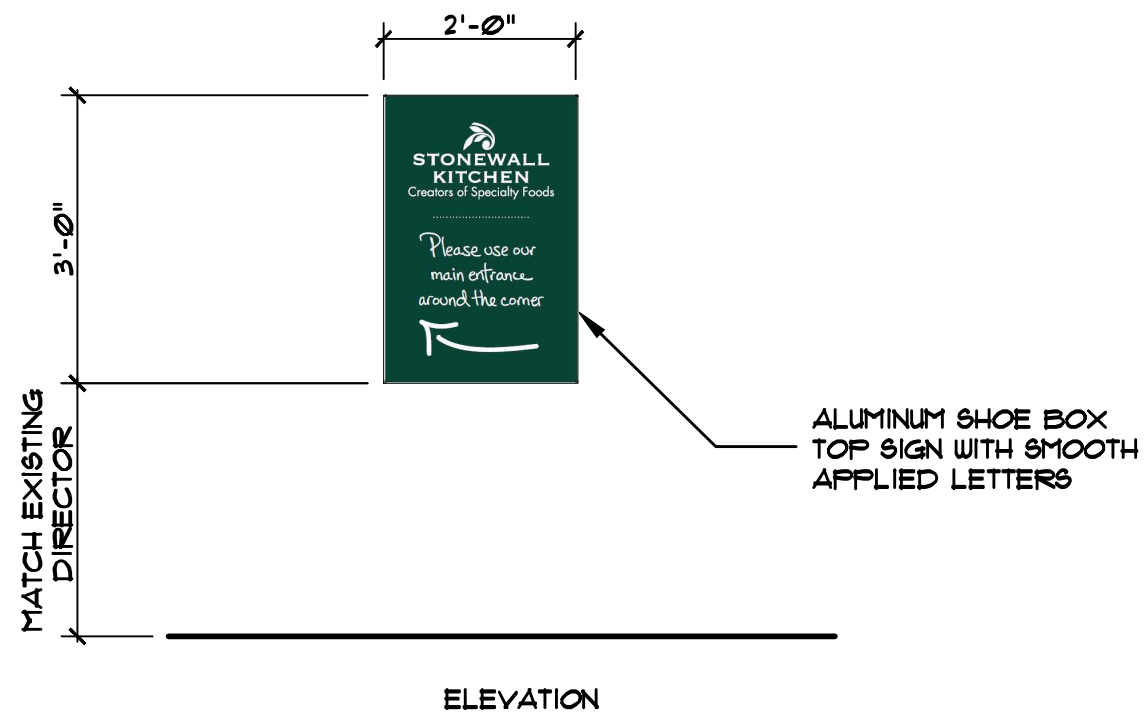




C PROPOSED WOOD PLANTER
 SCALE: 1/2" = 1'-0"



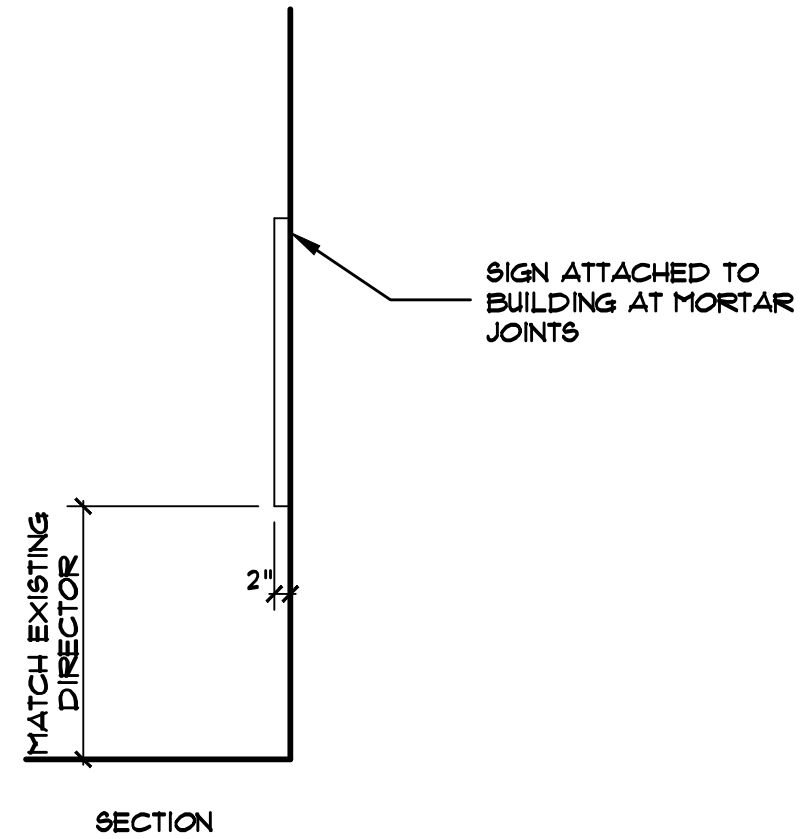
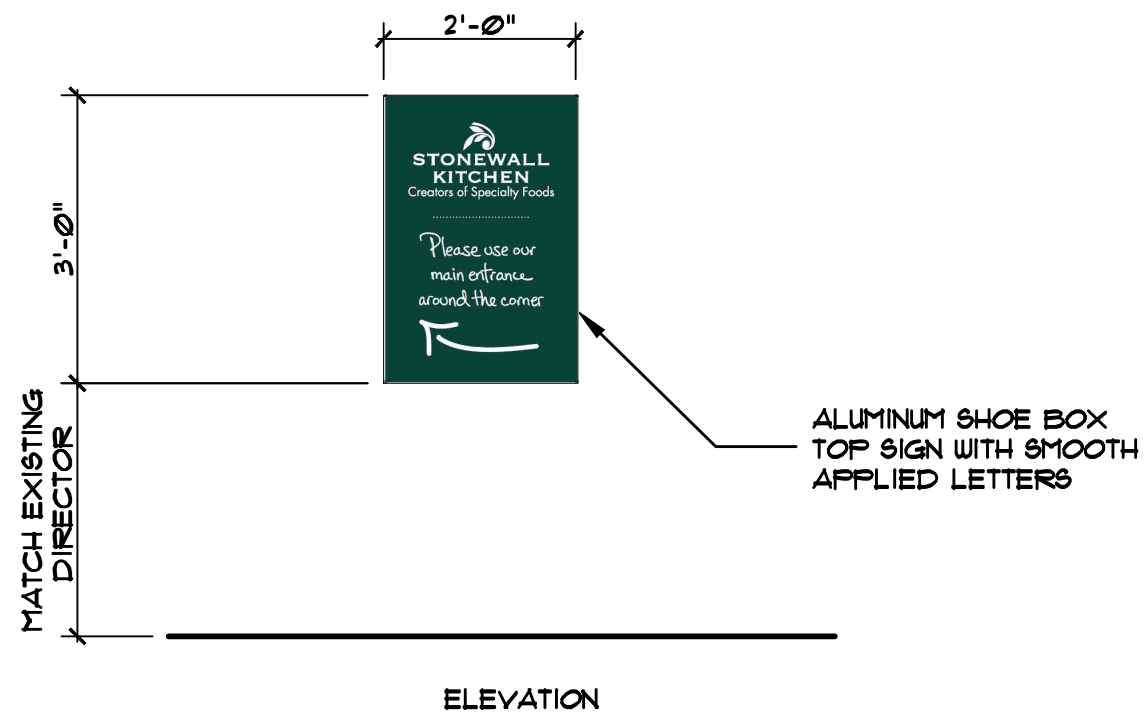
B CONGRESS STREET
ENLARGED EXTERIOR ELEVATION
SCALE: 3/16" = 1'-0"



C CONGRESS STREET
PROPOSED DIRECTIONAL SIGN
SCALE: 1/2" = 1'-0"



B CONGRESS STREET
ENLARGED EXTERIOR ELEVATION
SCALE: 3/16" = 1'-0"



C CONGRESS STREET
PROPOSED DIRECTIONAL SIGN
SCALE: 1/2" = 1'-0"