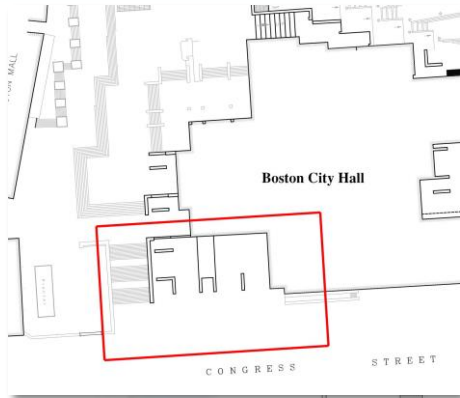
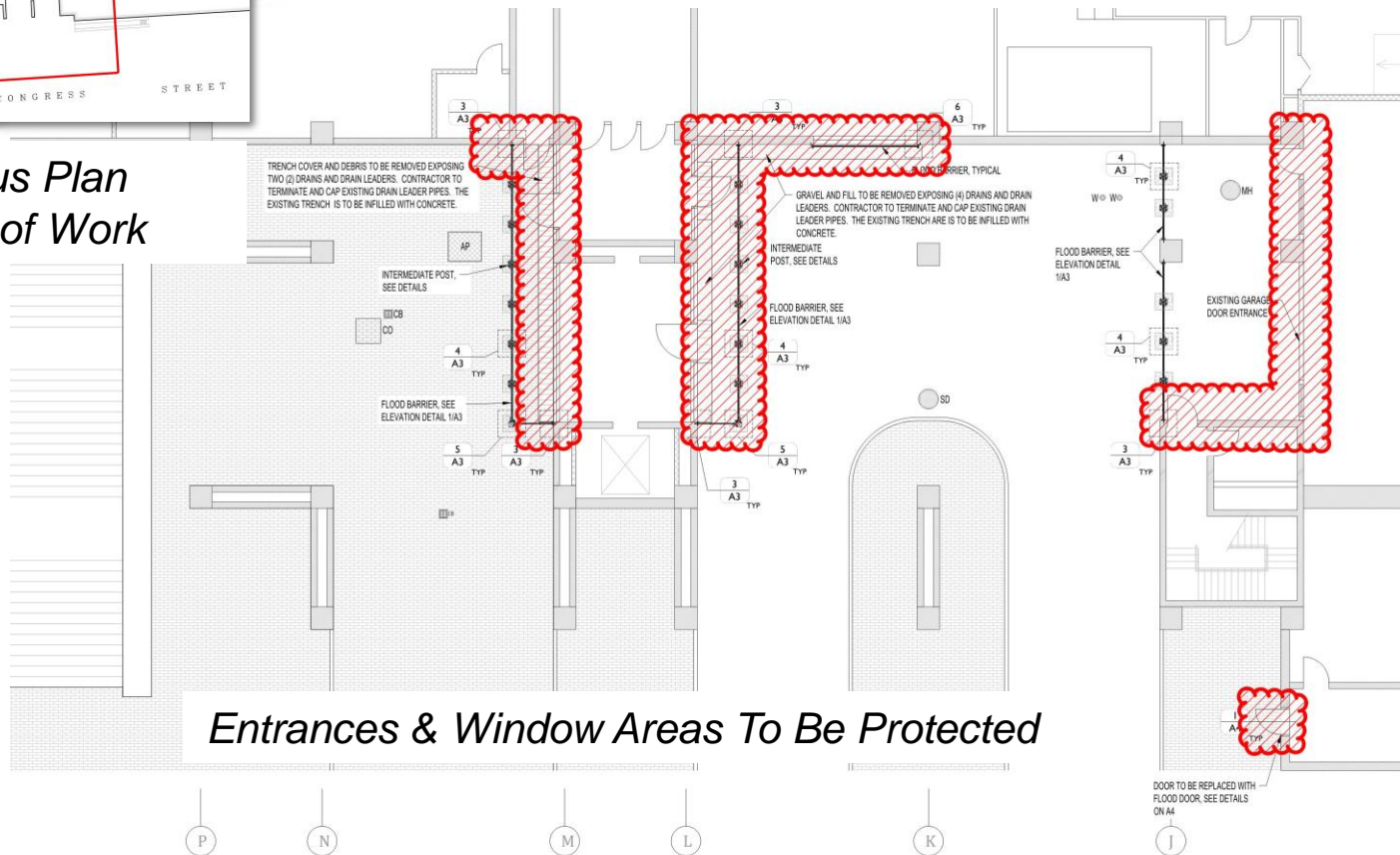


Boston City Hall Flood Mitigation Project



Project required by FM Global to provide protection of vulnerable areas during major storms and abnormally high tides

*Locus Plan
Area of Work*



Entrances & Window Areas To Be Protected

Boston City Hall Flood Mitigation Project



Entrances & Window Areas To Be Protected

Boston City Hall Flood Mitigation Project



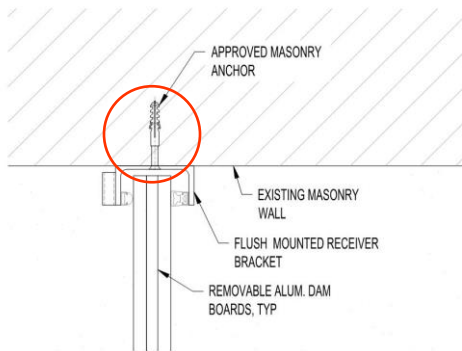
Garage Entrance & Access Door To Be Protected

Boston City Hall Flood Mitigation Project

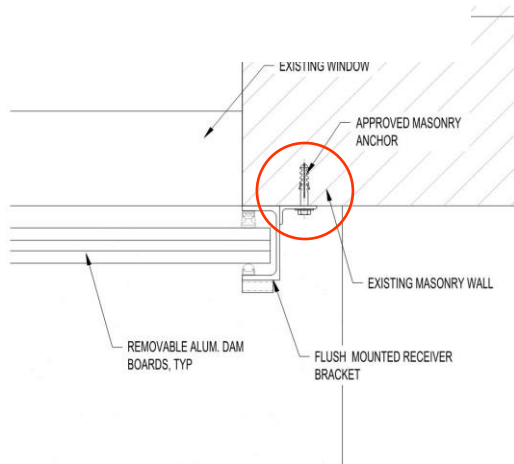


Typical Demountable Stop Log Installation

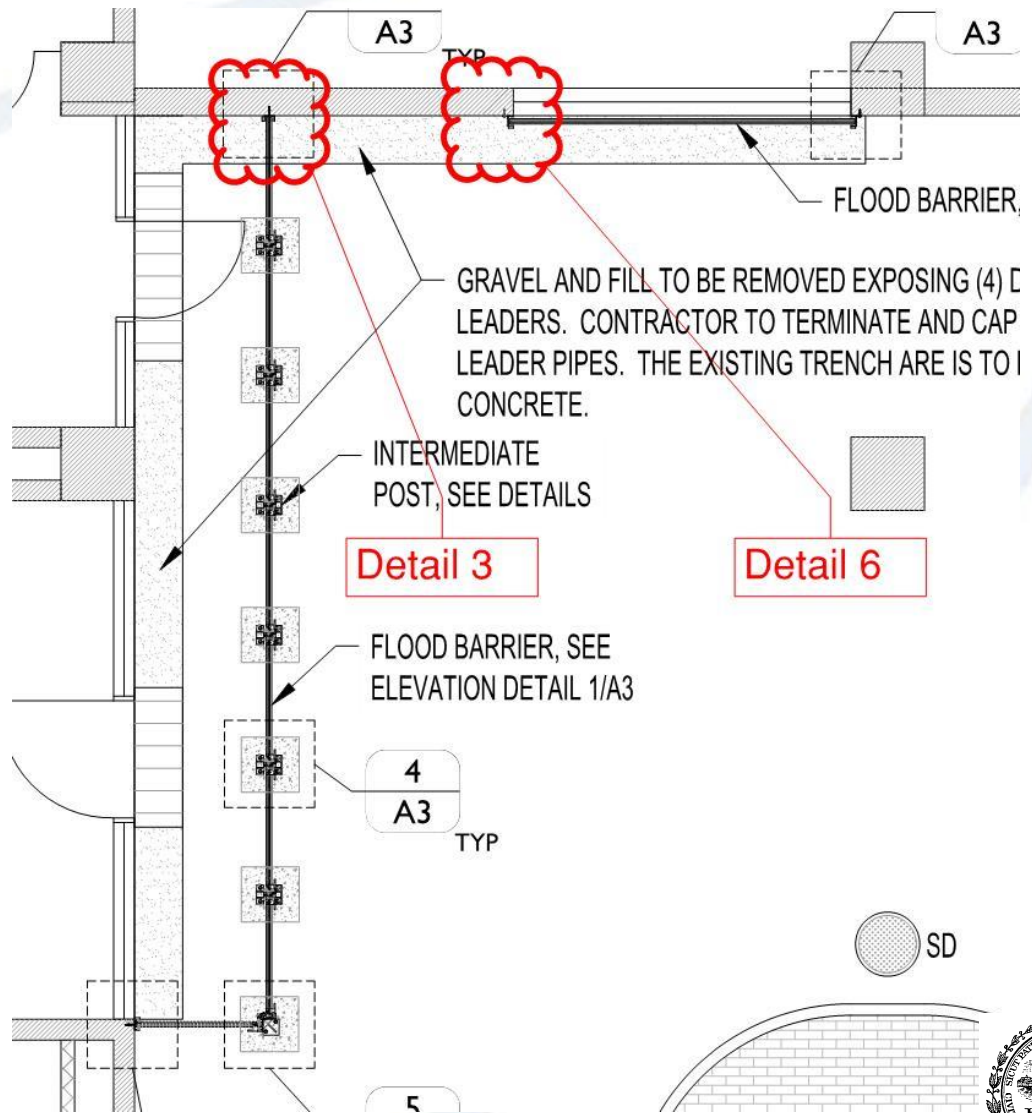
Boston City Hall Flood Mitigation Project



3
A3
TYPICAL FLUSH MOUNT WALL ATTACHMENT
SCALE: 3" = 1'-0"



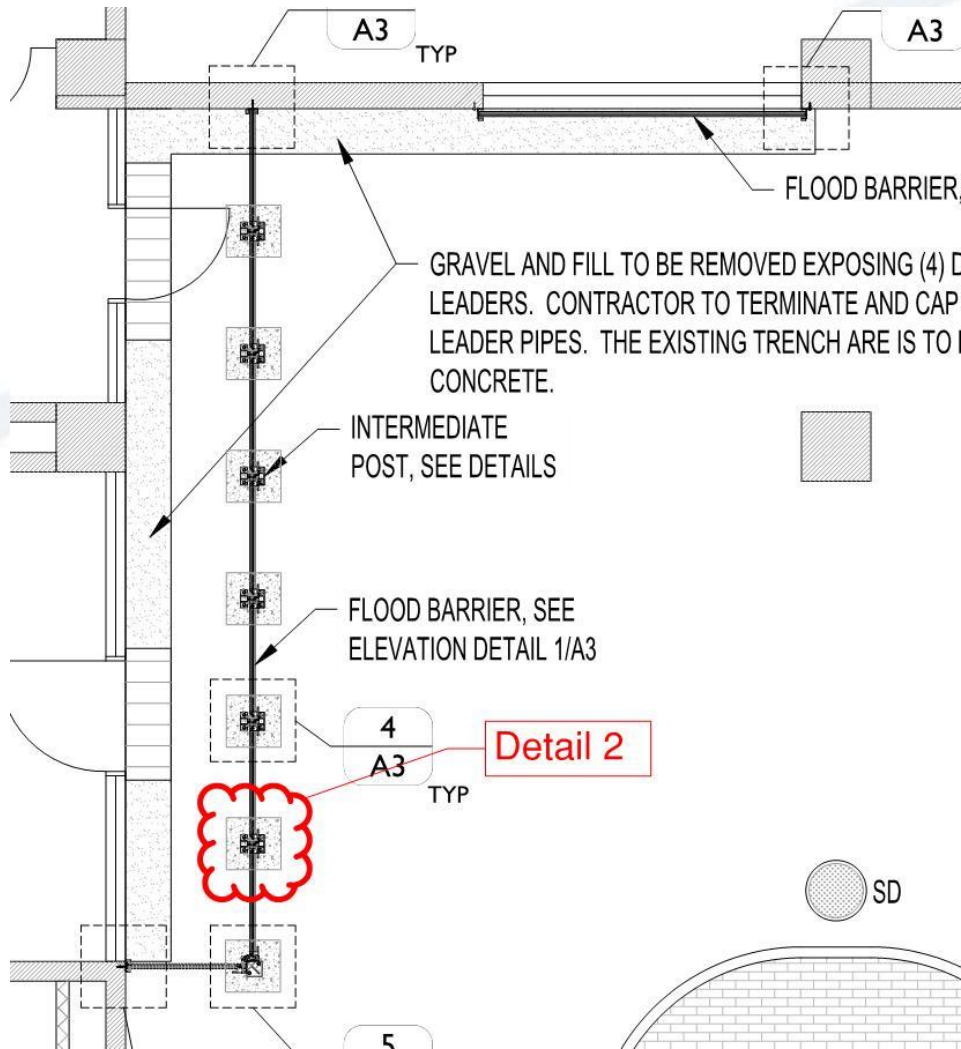
6
A3
TYPICAL FLUSH MOUNT WALL ATTACHMENT AT WINDOW
SCALE: 3" = 1'-0"



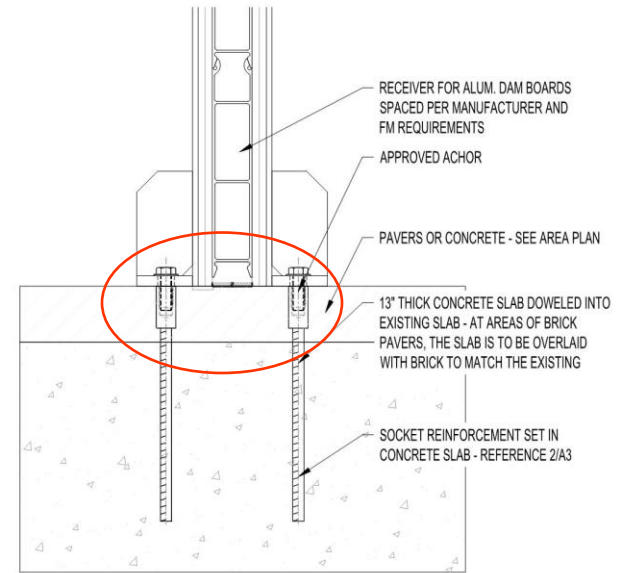
Detail 3

Detail 6

Boston City Hall Flood Mitigation Project



Detail 2



2 TYPICAL INTERMEDIATE POST BASE ATTACHMENT
A3 SCALE: 3" = 1'-0"

Boston City Hall Flood Mitigation Project

View of typical threaded insert with stainless steel cap.

Only permanent fixture to remain at masonry walls, concrete columns and within paver horizontal surfaces

