



*Byenvini nan Reyinyon an! Nou pral kòmanse nan
6:05.*

BLUE HILL AVE

Plan Daksyon Transpòtasyon ak Mizajou Vizyon

30 Septanm 2020

Mayor Martin J. Walsh



BLUE HILL AVE

Plan Daksyon Transpòtasyon ak Mizajou Vizyon

30 Septanm 2020

Mayor Martin J. Walsh

- Nou pral anrejistre reyinyon sa a epi afiche l sou sit entènèt BTD kidonk nenpòt moun ki pa prezan kapab tande l nan pita. **(FYI – pa anrejistre; nap pran nòt)**
- Tout moun sof pou konferansye a prale sou silans pandan reyinyon an.
 - Si ou vle pale, tanpri kite yon mesaj nan Chat la oswa itilize fonksyon “leve men”. Kidonk nou pral aktive son an epi ba ou chans pou pale.
- Si ou gen yon kesyon men ou pa vle pale, santi w alèz pou kite kesyon an nan Chat la epi nou pral li awotvwa.
- Nou pral aktive son an pou tout moun pou dènye 30 minit lan, pou pèmèt moun yo ki nan reyinyon an itilize telefòn yo pou poze kesyon.
- Si ou gen nenpòt kesyon apre reyinyon an, tanpri imèl Vineet Gupta nan vineet.gupta@boston.gov Nou pral kite imèl li tou nan chat la kidonk ou ka kopye l dirèkteman.
- Si ou gen nenpòt kesyon teknik, ou ka voye mesaj bay Vineet Gupta oswa Matt Moran dirèkteman e yo kapab travay avèk ou pou rezoud pwoblèm lan.

ÈDTAN BIWO– VIN PALE AVÈK NOU!

Men lòt opòtinite pou angaje avèk Ekip Transpò a sou Blue Hill Ave



An-Pèson

1

Dat:

Jedi 1ye Oktòb

Lè:

12:00 PM – 2:00 PM

Lokal:

Grove Hall Library Branch

2

Dat:

Mèkredi 7 Oktòb

Lè:

4:00 PM - 6:00 PM

Lokal:

Teren # 14 Minisipal Mattapan
Kwen nan Otowout Cummings ak
Fairway St

3

Dat:

Madi, 6 Oktòb

Lè:

12:00 PM - 2:00 PM

Lokal:

Zoom

4

Dat:

Madi, 6 Oktòb

Lè:

5:00 PM - 7:00 PM

Lokal:

Zoom

Vityèl

4 Wap jwenn enfòmasyon sou enskripsyon pou aktivite sa yo sou paj pwojè a boston.gov/blue-hill-avenue

AJANDA PREZANTASYON



- Entwodiksyon
- Enfòmasyon sou Pwojè
- Premye Atik yo
- Vizyon Alontèm
- Pwochen Etap yo
- Kesyon & Diskisyon



ENTWODIKSYON





Depatman Transpòtasyon Boston kenbe plizyè paramèt ki enfliyanse mouvman sou lari yo. Sa yo enkli:

- Siyal Trafik
- Lajè Lari
- Règleman Twotwa yo
- Atribisyon wout

Massachusetts Bay Transportation Authority a kenbe operasyon ak etablisman yo toupatou nan sistèm lan, sa ki gen ladan :

- Wout
- Orè
- Pri Tikè
- Gwosè ak Distribisyon Flòt la
- Fòmasyon Operatè Otobis

DEPATMAN YO NAN VIL LA AN KOLABORASYON

*Byenke **Depatman**
Transpòtasyon Boston ap
dirije plan sa a ...*

*... Nap travay etwatman
avèk anpil lòt depatman yo
nan Vil la.*



Transportation



Neighborhood Services



Boston Bikes

AGE+

Age Strong



Disabilities Commission



Public Works



Planning and
Development Agency

PWOJÈ KI GEN RAPÓ YO



Planning and
Development Agency



Public Works



Parks and Recreation



Transportation

- **PLAN Mattapan**
Plan kominote a dirije pou pwochen kwasans Mattapan
- **Plan Daksyon DND Blue Hill Ave**
Stimile devlopman ekonomik, opòtinite kwasans komèsyal, ak favorize espri antreprenarya nan kominote a
- **Plan Direktè Franklin Park**
Elabore yon vizyon pou pwochen investisman \$28 milyon dola
- **Otowout Cummins**
Rekonstriksyon pou amelyore sekirite ak aksè pou tout mòd transpòtasyon yo
- **Warren Street**
Travay pou atenn objektif priyorite transpò pou konbat reta ak kreye aksè ki pi ansekirite
- **Otowout Lejyon Ameriken**
Kreye lari ki pi kalm, pi ansekirite ak travay nan priyorite transpò piblik



**Enskri pou jounal la epi rete
ajou nan :**

Sit entènèt: bit.ly/PlanMattapan

Èske inisyativ planifikasyon Vil la ap chèche pou asire ke nou konsève sajan, amelyore ekitablite, ak grandi enklizivman. Ekip la ap travay avèk kominote a pou kreye yon vizyon konplè pou zòn planifikasyon Mattapan ak gide pwochen kwasans ak investisman.

PWOJÈ KI GEN RAPÓ YO – LIY FAIRMOUNT

AMELYORASYON SÈVIS

Wit vwayaj anplis chak semèn

Ogmantasyon total 20%
Sèvis pi bonè ak pita

INISYATIV CHARLIE CARD

Jwenn aksè nan liy
Fairmount lè ou itilize Kat
Charlie!

Transfè gratis nan lespas 2
èdtan

PWOCHEN VIZYON

Konsiderasyon

- Elektrifikasyon Etid
konsepsyon
estasyon
Entegrasyon Rezo



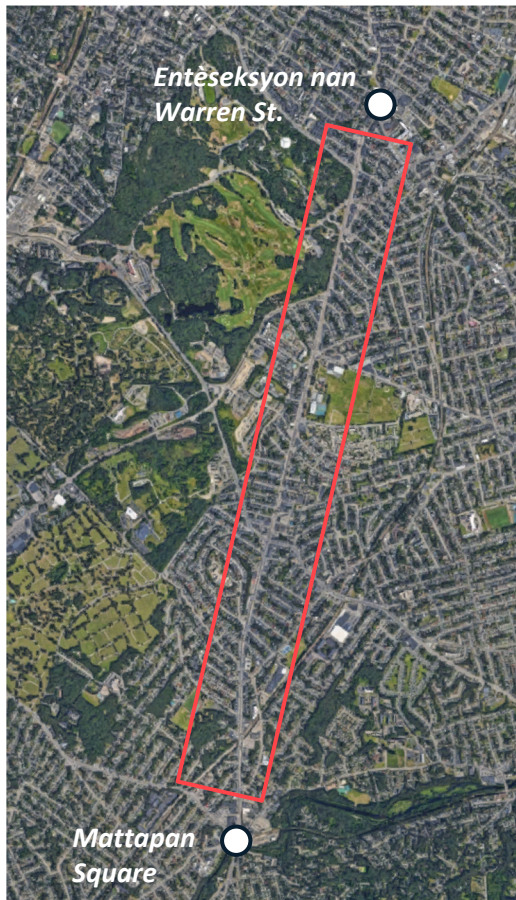
ENFÓMASYON SOU PWOJÈ

MISYON PWOJÈ

Plan daksyon Blue Hill Ave. Transportation an ap chèche pou **amelyore kalite lavi** pou itilizatè koridò yo ansanm avèk amelyore eta aktyèl **inegalite ki gen rapò avèk transpòtasyon nan vil la** lè yo repanse fonksyonman tout bagay, enkli ak ant twotwa aveni yo.



ORYANTASYON



Dimansyon Pwojè

- *Blue Hill Avenue: Entèseksyon Sid nan Warren Street ak Blue Hill Ave. nan Grove Hall ak nan nò Mattapan Square*

Pwojè koneksyon

- *BTB aktyèlman ap dirije pwojè yo sou Warren Street ak nan Mattapan Square*



20,000

Vwayajè Otobis chak jou an semèn



52%

Pati nan pasaje wout la nan peryòd trafik sou otobis yo



25 min

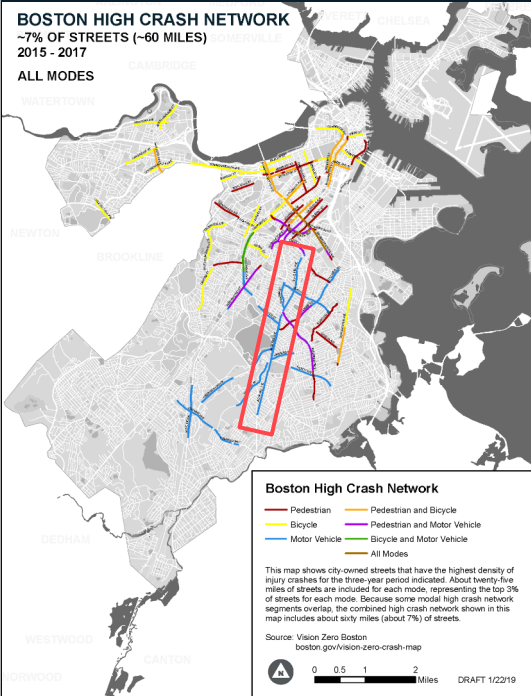
Pasaje otobis la nan peryòd trafik kap eksperimente reta jiska 25 minit nan toulède direksyon

MOTIVASYON PWOJÈ

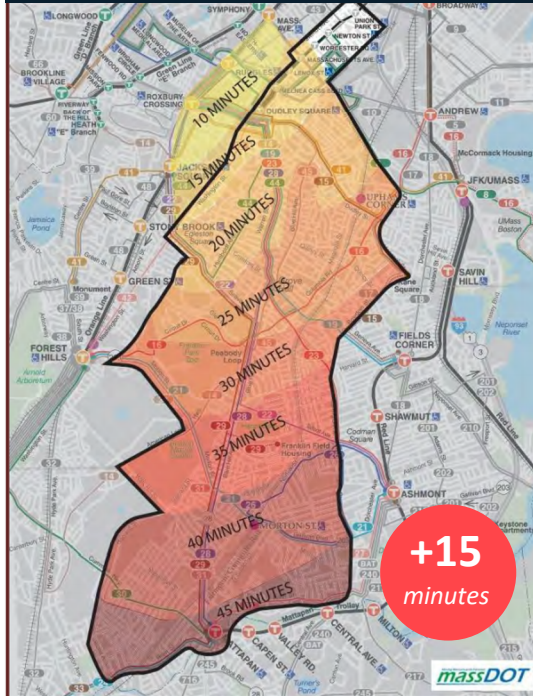
Pwoblèm Sekirite Grav

BOSTON HIGH CRASH NETWORK
~7% OF STREETS (~60 MILES)
2015 - 2017

ALL MODES



Inegalite Tan Deplasman



Volonte Kominote

VISION People's Voice | Boston Today Goals and Targets **ACTION PLAN** People's Voice | Boston in 2030 Projects and Policies

Crosswalk

Mattapan to LMA Rapid Bus

Faster transit connections to the medical district from southern Boston

Project Score

- Access 1
 - Safety 1
 - Reliability
 - Sustainability/Resiliency 1
 - Governance
 - Access 2
 - Safety 2
 - Affordability
 - Resiliency 2
- #19 in weighted Boston-only public voting

Project Description

A new transit line with high-quality stops, signal priority, all-door boarding, and some exclusive lanes will create direct transit connections for residents of Mattapan and southwest Dorchester to jobs and medical care in Roxbury, Mission Hill, and the Longwood Medical and Academic Area. This involves a rail-like bus service operating where excess roadway width exists today on one of several potential corridors that will be determined in conjunction with the community. Service would be high capacity and high frequency and could interline with the JFK/UMass to LMA rapid bus corridor (p176) and even the West Station to LMA connection (p203), connecting together southern Boston, the LMA, and Beacon Yards. Future upgrades could re-track and streetcar service initiated as ridership grows.



Implementation

Approximate Cost: \$51 million for design and construction with vehicle costs to be determined
Potential Funding Sources: City capital budget for design, Boston MBTA for matching construction and MassDOT/MBTA for vehicle costs
Who's Responsible: TFD and PFD with MassDOT/MBTA
Time Frame: Weeks 5 to 15 years in conjunction with local community process

Best Practices

The Cleveland, OH, Healthline has five min frequency during rush hours, SACV service on-board fare collection, dedicated BOW with higher speed limits, real-time information displays, "station" with fare machines, emergency call boxes, and elevated platform
www.ridetrans.com/healthline/about

Benefits and Issues Addressed

This investment will support economic opportunity along a corridor with heavy bus ridership but unreliable service, which—depending on the alignment—potentially improving other connections that head into Dudley Square and Downtown as well. Crosswalk connections from this part of the city are in high demand, as shown by the rider-ship rates on "diagonal" routes such as the 28, yet these routes have poor reliability. Poorly served riders, plus many more residents of Dorchester and Mattapan who are not near these diagonal routes today, must either drive—adding to the congested traffic on Mission Street—or ride into Downtown then back out to the LMA on the train. Replacing these lengthy, indirect, and unreliable transit commuters with a high-quality single-seat ride will benefit thousands, improve job access, and also attract new transit commuters.



Public Input

Planned repurposing is critical to the city's continued viability. Our rapid transit needs major investments in its capacity, both in the downtown core and in many under-served neighborhoods that are among the most transit-dependent sections of the entire metropolitan region (e.g., Washington Street Corridor through Roxbury and continuing through Grove Hall to Mattapan Square) — independent prerequisites to ensuring the continued development of Boston by providing the critical infrastructure that can support our growing public transportation system.

Go Boston 2030

180

©2019

KONTÈKS PLANIFIKASYON: Mattapan jiska LMA

De nan 58 pwojè spesifik yo anpil sou chanjman yo osijè fason Blue Hill Ave. fonksyone.

Rekonsepsyon Blue Hill Ave angaje nan etablisman bisiklèt ak amelyorasyon sèvis otobis ki aliye etwatman avèk objektif Go Boston 2030.

Crosstown

Mattapan to LMA Rapid Bus

Faster transit connections to the medical district from southern Boston

Project Score

- Access 1
- Access 2
- Safety 1
- Safety 2
- Reliability
- Affordability
- Sustainability/Resiliency 1
- Sustainability/Resiliency 2
- Governance

#19 in weighted Boston-only public voting

Project Description

A new transit line with high-quality stops, signal priority, all-door boarding, and some exclusive lanes will create direct transit connections for residents of Mattapan and southwest Dorchester to jobs and medical care in Roxbury, Mission Hill, and the Longwood Medical and Academic Area. This involves a rail-like bus service operating where excess roadway width exists today on one of several potential corridors that will be determined in conjunction with the community. Service would be high capacity and high frequency and could interline with the JFK/UMass to LMA rapid bus corridor (p176) and even the West Station to LMA connection (p203), connecting together southern Boston, the LMA, and Beacon Yards. Future upgrades could see tracks and streetcar service initiated as ridership grows.



Implementation

Approximate Cost: \$55 million for design and construction with vehicle costs to be determined
Potential Funding Sources: City capital budget for design, Boston MPO TIP for roadway construction, and MassDOT/MBTA for vehicle costs
Who's Responsible: BTD and PWD with MassDOT/MBTA
Time Frame: Within 5 to 15 years in conjunction with local community process

Best Practices

The Cleveland, OH, Healthline has five min frequency during rush hours, 24/7 service, off-board fare collection, dedicated ROW with higher speed limits, real time information displays, "strations" with fare machines, emergency call boxes, and elevated platforms.

www.ridetrans.com/healthlineabout

Benefits and Issues Addressed

This investment will support economic opportunity along a corridor with heavy bus ridership but unreliable service, while—depending on the alignment—potentially improving other connections that head into Dudley Square and Downtown as well. Crosstown connections from this part of the city are in high demand, as shown by the ridership rates on "diagonal" routes such as the 28, yet these routes have poor reliability. Poorly served riders, plus many more residents of Dorchester and Mattapan who are not near these diagonal routes today, must either drive—adding to the congested traffic on Morton Street—or ride into Downtown then back out to the LMA on the train. Replacing this lengthy, indirect, and unreliable transit commutes with a high-quality single-seat ride will benefit thousands, improve jobs access, and also attract new transit riders.



Public Input

"Transit expansion is critical to the city's continued viability. Our rapid transit needs major expansion of its capacity, both in the downtown core and in many under-served neighborhoods that are among the most transit-dependent sections of the entire metropolitan region (e.g., Washington Street Corridor through Roxbury and continuing through Grove Hall to Mattapan Square). ... indispensable prerequisites to assuring the continued development of Boston by providing the critical infrastructure that can support our growing public transportation system."

-02119

ANGAJMAN JISKA DAT

SONDAJ BTĐ

ETID SOU RI ABITAB YO

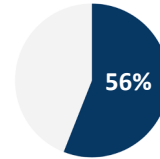
2 REYINYON PIBLIK

A large, bold, white letter 'B' is centered on a dark blue background. Below the letter is a thick, solid red horizontal bar.



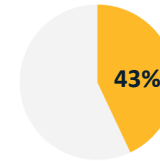
Repondan yo ki abite nan KÓD postal ke BHA manyen dirèkteman

TRANSPÓTASYON



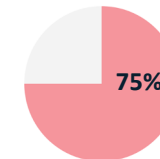
te rapòte ke yo panse veyikil yo te vwayaje twò rapid sou BHA

SEKIRITE



Rapòte yo te, oswa konnen yon moun, nan yon aksidan sou BHA

DOMÈN PIBLIK



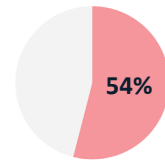
Vle plis pyebwa ak vejetasyon sou koridò a

Estasyonman Doub

Se yon gwo koz dezòd + konjesyon

Morton Street

Liste souvan tankou entèseksyon ki pi danjere



Vle afichaj arive otobis yo an tan reyèl



7

**Aktivite
Angajman**

200

Vwa Kominotè

DOMÈN PIBLIK

Amelyorasyon yo swete pi souvan yo:

1. Enfòmasyon sou Arive otobis an tan reyèl. Afiche
2. Pi bon ekleraj nan Lari
Plis atizaj nan Lari a

“Mwen vle wè plis nan istwa katye mwen an sou Blue Hill atravè ar.”

TRANSPÓTASYON

Prensipal difikilte pou vwayaje sou Blue Hill Avenue:

1. Otobis twò chaje
2. Orè otobis nan fen semèn ki pa pratik
Sèvis otobis ki pa fyab
3. Move etikèt otobis
4. Trafik veyikil /konjesyon
5. Move kondisyon wout

Gwo volonte pou enfrastrikti bisiklèt, liy otobis, ak pou chak arè sou BHA pou gen yonabri.

Tout règ ak règleman yo pa vle di anyen si yo pa ranfòse.

“Anyen pa ta amelyore eksperyans BHA mwen plis pase yon tikè ki pi ba.”



PREMYE ELEMAN AKSYON

Ajans Minisipal yo kap transfòmè kòmantè kominote a annaksyon

KI GEN RAPÒ AVÈK: SEKIRITE

43% nan moun kap reponn sondaj la te rapòte, oswa konnen yon moun, nan yon aksidan sou BHA

- **Enstalasyon Pano Retou Vitès**
Nan direksyon Sid sou Blue Hill Ave. nan Walk Hill
- **Amelyore Entèseksyon BHA-American Legion**
Avèk yon nouvo ekipman siyalizasyon, chanjman tan, ak ranp aksesib
- **Amelyorasyon twotwa ak ranp**
Nan entèseksyon Baird, Balsam, ak Harvard
- **Repwograme Pasaj Pyeton nan Entèseksyon yo**
Gade spesifikman nan Seaver, Talbot, Morton, ak Columbia

FINI

Kap vini



- **Kanpay Siyalizasyon Sekirite**
Toupatou nan koridò a ak nan kominote avwazinan yo
- **Amelyorasyon Pasaj Pyeton ak otobis la**
Toupatou nan koridò a ak nan kominote avwazinan yo
- **Modifikasyon nan règlemantasyon Twotwa yo**
Reponn a pwoblèm sekirite tout mòd yo ki gen rapò avèk vyolasyon nan estasyonman

Fini

- **Nouvo Ban**
Entwodui nan Mattapan Square ak sou koridò a

Kap vini

- **Plante Pyebwa**
Ant Grove Hall ak Franklin Park

- **Ranplase Bannyè yo**
Sou medyan nan Mattapan Square

- **Penti Mi sou Twotwa yo**
Devan Grove Hall ak Bibliyotèk Mattapan

- **Ranplase Poubèl Fatra ki egziste deja**
Sou koridò a avèk bidon ki gen bouchon ak resipyan resiklaj

- ← ● **Devlope Pwogram Pentire Bwat Vil la**
Toupatou nan koridò a

- **Itilize Penti pou Miray**
Kòm oryantasyon dirije chofè nan pakin piblik yo

3 sou 4 repondan sondaj
la vle yon BHA ki pi vè



Fini

- **Enstalasyon Pano Retou Vitès**
Nan direksyon Sid sou Blue Hill Ave. nan Walk Hill
- **Repave Lari a**
Tout Blue Hill Ave: soti nan Dudley Street pou rive nan fwontyè Milton

Kap vini

- **Aktivasyon Priyorite Siyal Transpò**
Nan chak gwo entèseksyon sou Blue Hill Ave.
- **Bwat Bisiklèt**
Nan entèseksyon Warren Street ak Blue Hill Ave.
- **Modifikasyon nan règlemantasyon Twotwa yo**
Pou pi byen sèvi itilizatè aktyèl twotwa ak redwi doub pakin



Repondan sondaj la te endike doub pakin antanke yon gwo koz dezòd & konjesyon

An aerial photograph of a city street, likely in Boston, showing a mix of residential and commercial buildings, green trees, and a wide road with a median. The image is partially obscured by a red logo in the top left and a dark blue banner at the bottom.

B

CITY of BOSTON

VIZYON ALONTÈM

Konsiderasyon Konsepsyon pa Mòd Transpòtasyon



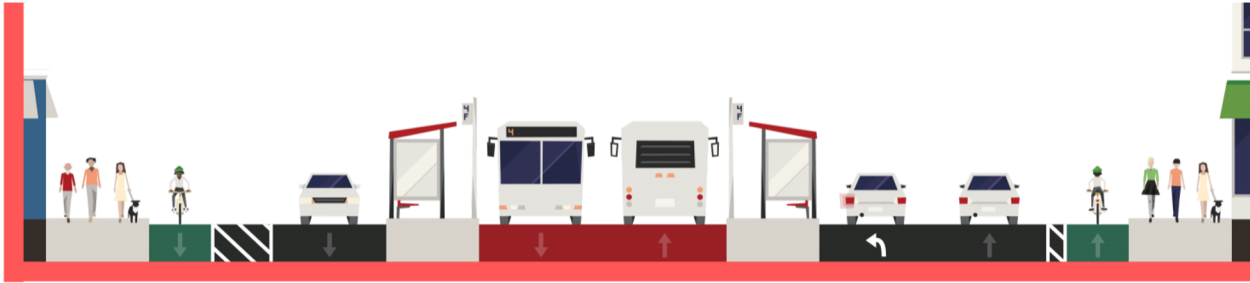
● Bay transpò piblik ak aktif priyorite kote yo bezwen l'piplis

● Bay koneksyon enkliziv, san danje

● Modènize yon koridò defavorize

● Angaje pou konsevwa pou plizyè-modèl ak baze sou enkyetid kominote a

VIZYON: OTOBIS



● Sèvis Fyab ak Efikas

- Koleksyon tikè nan debakman
- Pwoteksyon Abri
- Enfòmasyon Otobis an tan reyèl.
- Afiche
- Priyorite Siyal Otobis

Ekonomize Tan Vwayaj Maksimòm grasa Fonksyonman Santral



25

minutes

Rush hour bus travel time between Mattapan Station and Nubian Square



422

parking spots

Amount of parking maintain between Babson in the south and Warren in the north



SELF-

enforcing

Due to the location of the bus lanes away from the parking lane, this concept is less plagued by double-parking and is largely self-enforcing.

VIZYON: BISIKLÈT



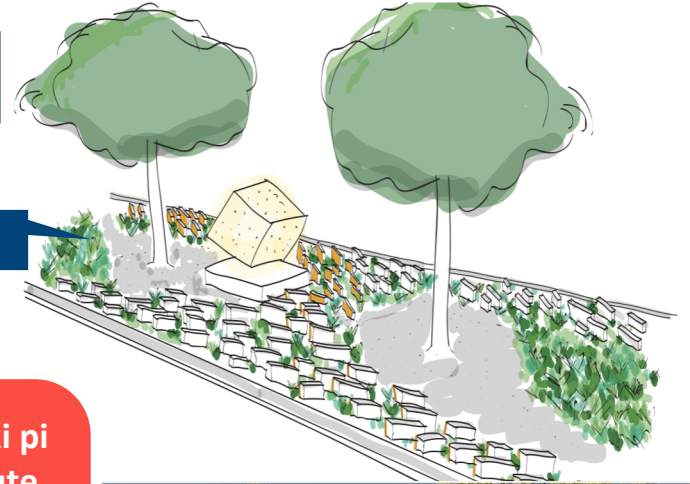
- **Koneksyon Bisiklèt Konsistan, Pwoteje**
- **Priyorite Siyal Bisiklèt**
- **Separe nan depasman pa veyikil & Estasyonman**
- **Fasilman lizib avèk siy klè ak Liy Mak an Vè**

VIZYON: PYEBWA



Anbelisman Mwayèn

Tout Pyebwa Iari Pwoteje



Imajine yon Blue Hill Ave ki pi vèt! Yo pral konsidere ajoute plis plant nan medyan ki rete yo ak nan anplasan twotwa yo.

Payette, Greater Grove Hall Main Streets



VIZYON: ESPAS PIBLIK



“Mwen vle wè plis nan istwa katye m sou Blue Hill grasa ar.”

- *BHA double kòm yon koridò trafik enpòtan ak yon galri atistik piblik*
- *Domèn piblik sèvi tout e li reprezante idantite kominote a*
- *Kanope pyebwa iben mentni ak elaji pou elve kalite lè lokal ak amelyore kalite eksperyansyèl sou wout*

Chofè Prensipal yo: Sekirite, Aksesibilite, Repezantasyon Atistik, Espas Vè



PWOCHEN ETAP YO



- **Premye Faz Konsepsyon**
Pwogrese de konsèp a premye faz konsepsyon
- **Entegre Vwa Kominote a**
Kòmantè ap enfòme konsiderasyon konsepsyon
- **Avanse nan Konsepsyon Final nan kòmansman 2021**
Yon pwosesis konsepsyon ki chita sou kominote a ki soutni pa yon evalyasyon solid ant ajans yo pou kreye yon pwodui fini



- **Finansman Kapital Vil la**
Nou konsakre finansman pou pwojè sa a e nou pral priyorize pwojè sa a nan pwosesis bidjè a kap vanse
- **Kowòdinasyon MBTA**
Priyorize finansman nan pwojè sa a
- **Lòt sous Finansman**
Nou pral eksplòre opsyon finansman an ki soti nan lòt sous yo tankou gouvènman federal
- **Ale Delavan**
Fè pwojè sa ale delavan pou l ka pare pou enplemantasyon rapid depi lajan fin repati

KIJAN MWEN KA PATISIPE?



- **Sondaj Apre-Reyinyon**
Pataje kòmantè ki pi detaye ak pwopaje sondaj la nan kominote w!
- **Èdtan Biwo**
Vin Pale 1-a-1 avèk Ekip Transpò a an-pèsòn ak vityèlman, apati semèn pwochèn!
- **Lòt Metòd yo?**
Si ou gen sijesyon sou lòt fason pou enplike kominote w, kite kòmantè w nan sondaj apre-reyinyon an!



KESYON & DISKISYON

Matthew Moran, Direktè Transpò
matthew.moran@boston.gov