

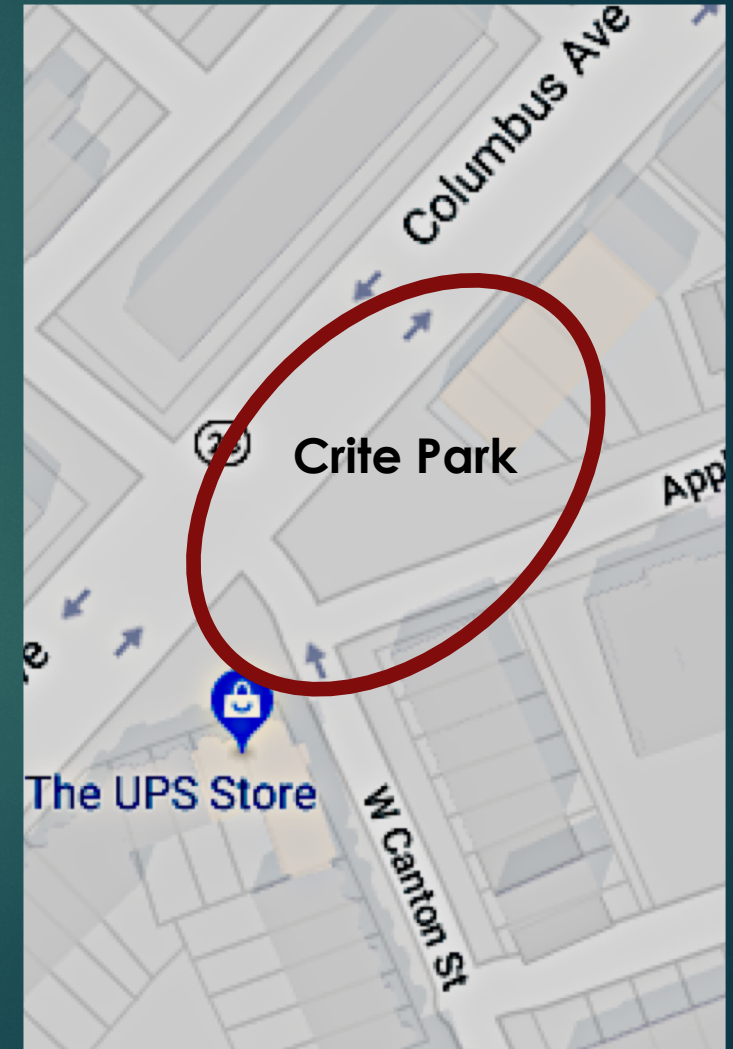


Crite Park

FRIENDS OF CRITE PARK

DR. CHERYL C. DICKINSON, PRESIDENT

Existing Crite Park & Location





Other views
of existing
Crite Park





Proposed Crite Park Design

Columbus Avenue Perspective Crite Park

Ellis South End Neighborhood Association
07/17/2020



Proposed Crite Park Design

Interior Perspective

Crite Park

Ellis South End Neighborhood Association
07/17/2020

Messages



LEGEND

- 1 Metal Pergola with Art Panels, Integrated Light Fixtures + GFCI Outlets
- 2 Accessible Table Seating
- 3 Conversational Seating Area
- 4 Metal Picket Fence on Granite Curb - 30" height (including curb)
- 5 Metal Landscape Fence - 18" total height
- 6 Concrete Paving
- 7 New Wire Cut Brick Paving (at seating areas)
- 8 Existing Light Fixture (to remain)
- 9 Existing Tree (to remain)
- 10 New Tree
- 11 Flowering Shrubs
- 12 Landscape Planting Area
- 13 Trash + Recycling Receptacle



1 Pergola (painted metal) Proposed canopy pattern



2 Accessible Table (provide with 3 seats for wheelchair accessibility) - checkerboard on 2 table



1 Pergola-mounted site lighting, 10W LED, 2700K color temperature (warm white)



3 Armchairs (length varies, 30-48", and Side Table (grey powdercoat finish)



13 Trash + recycling receptacle (black finish, 2 side doors for 36 gallon liners) - final selection TBD with City of Boston



4 Metal Picket Fence on Granite Curb, 30" height



5 Metal Landscape Fence on Granite Curb-18" height

Proposed Crite Park Design & Details

CRITE PARK - Illustrative Concept Plan

Ellis South End Neighborhood Association
July 10, 2020



Proposed Crite Park Plantings

TREES



Gleditsia triacanthos var Inermis
Sunburst Honeylocust
- thornless, podless
- 40-50' height



Hamamelis x intermedia Arnold Promise
Arnold Promise Witch Hazel
- 15-20' height



Quercus bicolor
Swamp White Oak
- 40-50' height

FLOWERING SHRUBS



Hibiscus syriacus White Chiffon
White Chiffon Rose of Sharon
- 6-8' height



Hydrangea quercifolia Pee Wee
Dwarf Pee Wee Oakleaf Hydrangea
- 3-4' height

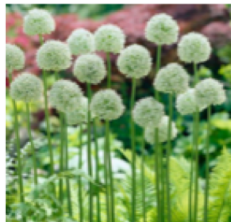


Rosa x Radsunny
Sunny Yellow Knockout Rose
- 3-4' height

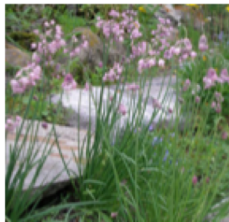
GROUNDCOVERS, PERENNIALS + ORNAMENTAL BULBS



Rhus aromatica Gro Low
Gro Low Fragrant Sumac
- 2-3' height



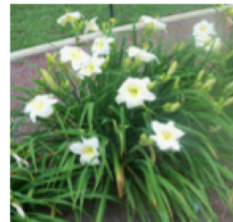
Allium stipitatum White Giant
White Giant Allium
- 3-4' height



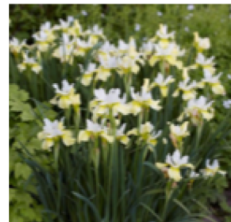
Allium cernuum
Nodding Onion
- clumping
- 12-18" height



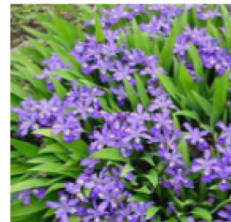
Narcissus Mount Hood
White Trumpet Daffodil
- clumping
- 12-18" height



Hemerocallis Joan Senior
Reblooming White Daylily
- clumping
- 18-24" height



Iris siberica Butter and Sugar
White Siberian Iris
- clumping
- 24-30" height



Iris Cristata
Dwarf Crested Iris
- spreading
- 3-6" height



Lamium White Nancy
White Spotted Deadnettle
- spreading
- 6" height

Plant Palette

Crite Park

Ellis South End Neighborhood Association
07/10/2020

ISOLINE KEY

- 0.00 fc
- 0.25 fc
- 0.50 fc
- 1.00 fc
- 5.00 fc
- 10.00 fc

COLUMBUS AVE

WEST CANTON ST

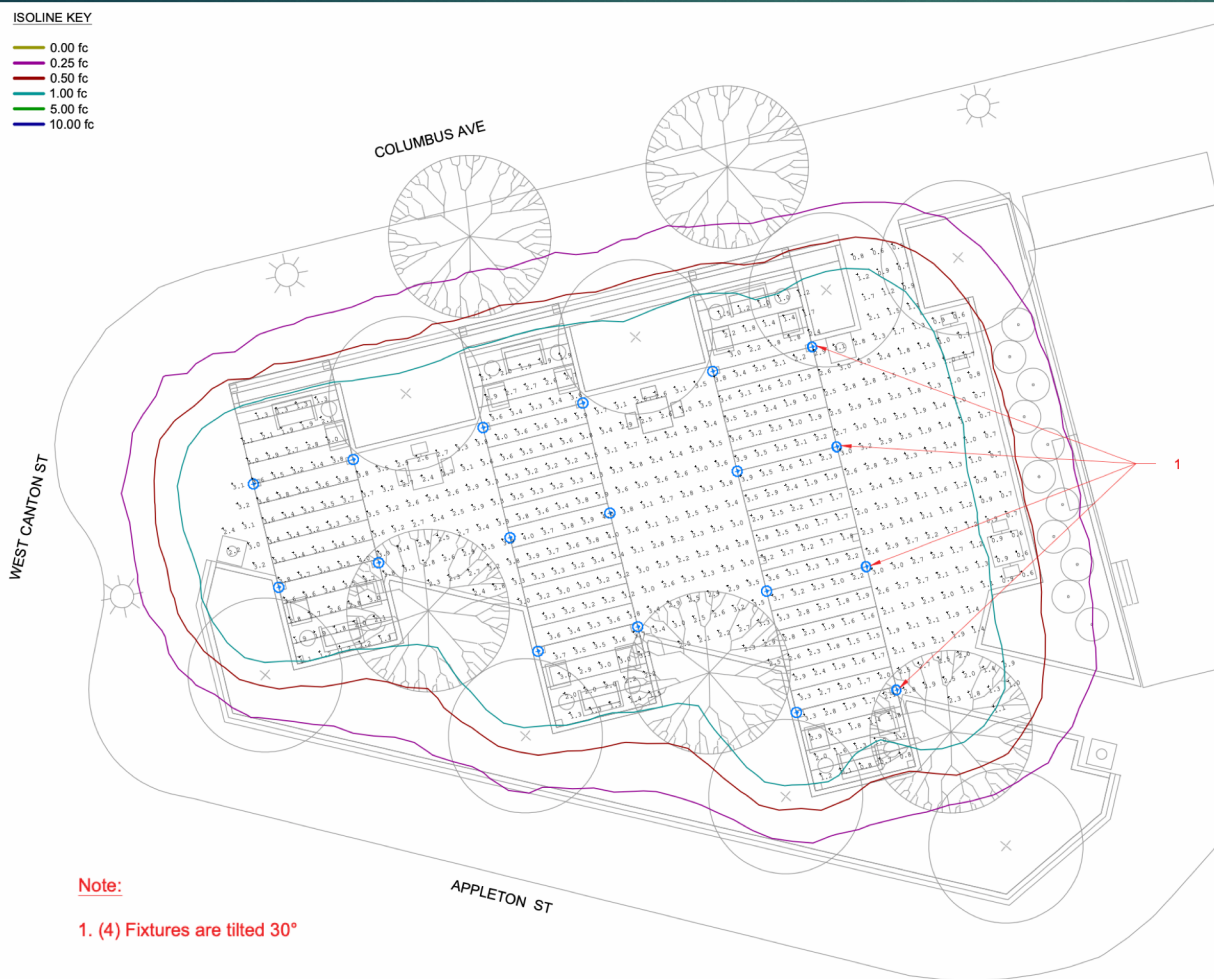
APPLETON ST

(4) Fixtures tilted 30°

Crite Park Lighting Plan

ISOLINE KEY

- 0.00 fc
- 0.25 fc
- 0.50 fc
- 1.00 fc
- 5.00 fc
- 10.00 fc



Note:

1. (4) Fixtures are tilted 30°

Crite Park Lighting detail

Luminaire Schedule

Symbol	Qty	Label	Description	Arrangement	IES Class	MH	LLF	Lum. Lumens	Lum. Watts
⊕	18	C	Amerlux: ACCS-27K-60	SINGLE	N.A.	10'	0.850	548	9

Calculation Summary

Label	CalcType	Units	Avg	Max	Min	Avg/Min	Max/Min
Crite Park	Illuminance	Fc	2.5	4.0	0.5	5.0	8.0

The Crite Park Project
Dr. Cheryl Dickinson, President, Friends of Crite Park
August 4, 2020

- Location:** Corner of Columbus Avenue and West Canton Street, South End
- Purpose:** To beautify the space into an open, safe and tranquil environment
To rejuvenate and expand the park for community events supporting our diverse neighborhood culture and South End history
To serve as a South End cornerstone and tribute to a Boston cultural and artistic icon, Allan Rohan Crite
- Community Support:** There is widespread community support as evidenced 814 petitioners supporting the park, an Advisory Council of notable community leaders, Ellis South End Neighborhood Association sponsorship, community donors, and the relentless efforts of the Friends of Crite Park Board.
- Friends of Crite Park Board:** Cheryl C. Dickinson, Maryellen Hassell, Betsy Hall, Ryan Gosser, Regina Pyle, Jennifer Girvin, Linda Esposito, Paul Wilcox
- Advisory Council:** Councilman Ed Flynn, Frieda Garcia, Gary Bailey, Anthony Gordon, Jackie Crite, Claire Corcoran, Charlie Rose
- Sponsoring Agency:** Ellis South End Neighborhood Association - Stacy Koeppel, Executive Director
- Landscape Architects:** BSC Group, Landscape Architecture
Contact Person – Monique Hall, Landscape Architect
- Status:** In just three years, the Crite Park Board has developed an awareness of the significance of the Crite Park project, raised the \$23,000 necessary to make the park shovel-ready and thus able to compete for funding. Potential funding sources include the CPA, Browne Fund, and Henderson Fund among others. Community engagement, publicity, and fundraising continues.



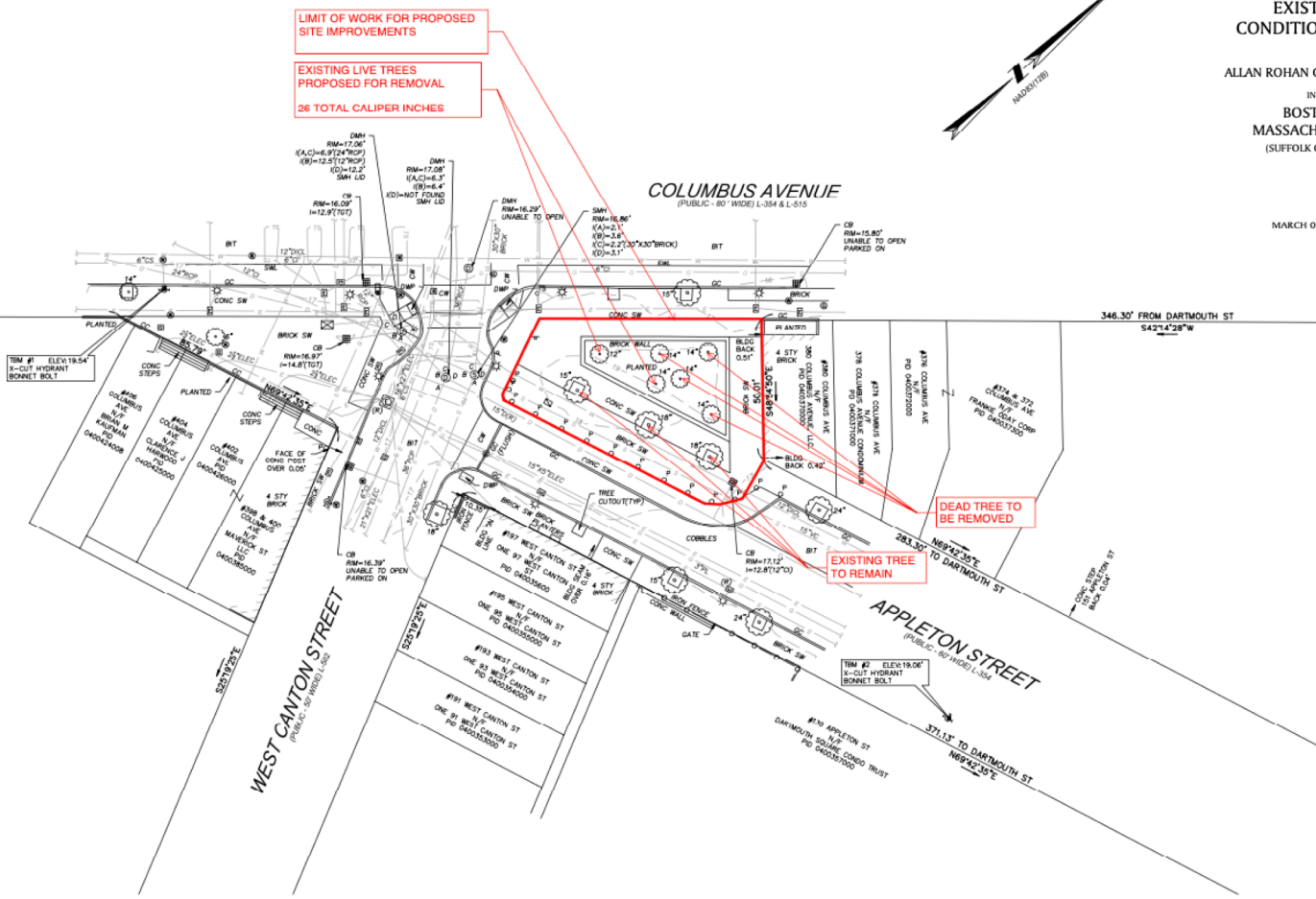
Locust Map
(NOT TO SCALE)

EXISTING
CONDITIONS PLAN

ALLAN ROHAN CRITE SQUARE
IN
BOSTON
MASSACHUSETTS
(SUFFOLK COUNTY)

MARCH 06, 2020

Crite Park Site Survey



LEGEND

- ⊙ SEWER MANHOLE
- ⊙ DRAIN MANHOLE
- ⊙ WATER MANHOLE
- ⊙ ELECTRIC MANHOLE
- ⊙ TELEPHONE MANHOLE
- ⊙ CABLE MANHOLE
- ⊙ MANHOLE
- ⊙ CATCH BASIN
- ⊙ HYDRANT
- ⊙ WATER GATE
- ⊙ GAS GATE
- ⊙ TRAFFIC SIGNAL
- ⊙ PEGGED/STAKE SIGNAL
- ⊙ LIGHT POLE
- ⊙ ELECTRIC HANDHOLE
- ⊙ HANDHOLE
- ⊙ TRAFFIC CONTROL BOX
- ⊙ SIGN
- ⊙ MAIL BOX
- ⊙ POST
- ⊙ DECEIDUOUS TREE
- ⊙ CONIFEROUS TREE
- RT RETAINMENT FOOTING
- CC CONCRETE CURB
- CONC CONCRETE
- CW CROSSWALK
- DWP DETECTABLE WARNING PAD
- GG GRANITE CURB
- INVERT
- (R) RECORD INFORMATION
- SW SIDEWALK
- SWL SOLID WHITE LINE
- TOT TOP OF GAS TRAP
- S SEWER LINE
- D DRAIN LINE
- W WATER LINE
- G GAS LINE
- E UNDERGROUND ELECTRIC CONDUIT
- TS TRAFFIC SIGNAL LINE

GENERAL NOTES

- THIS PLAN IS BASED UPON AN ON-THE-GROUND SURVEY PERFORMED BY BSC GROUP, INC. IN FEBRUARY 2020.
- HORIZONTAL DATUM IS BASED UPON NAD '83(128) AS DERIVED VIA GPS OBSERVATIONS PERFORMED BY BSC GROUP, INC. IN FEBRUARY 2020.
- VERTICAL DATUM IS BASED UPON NAVD '88 AS DERIVED VIA GPS OBSERVATIONS PERFORMED BY BSC GROUP, INC. IN FEBRUARY 2020.
TBM 1 EL.=19.54'
DECK K-CUT HYDRANT BONNET BOLT
TBM 2 EL.=19.06'
- LOCUS IS LOCATED WITHIN ZONE X UNSHADED AS GRAPHICALLY DEPICTED ON FLOOD INSURANCE RATE MAP NUMBER 200200071L WITH AN EFFECTIVE DATE SEPTEMBER 25, 2006 AND A REVISION DATE OF MARCH 16, 2016.
- UTILITY RECORDS WERE NOT REVIEWED FROM BOSTON FIRE ALARM.

PLAN REFERENCES

- PLAN ENTITLED "PLAN OF LAYING OUT OF APPLETON STREET" BY H.M. DAVIS, DATED SEPTEMBER 7, 1868, RECORDED AS LAYOUT L-354 WITH THE CITY OF BOSTON ENGINEERING DEPARTMENT.
- PLAN ENTITLED "PLAN OF LAYING OUT OF WEST CANTON STREET" BY H.M. DAVIS, DATED SEPTEMBER 7, 1868, RECORDED AS LAYOUT L-354 WITH THE CITY OF BOSTON ENGINEERING DEPARTMENT.
- BOSTON CITY FIELD BOOK 088, PAGE 26.
- BOSTON CITY FIELD BOOK 088, PAGE 26-33.
- BOSTON CITY FIELD BOOK 663, PAGE 44- 45.

PROPOSED TREE REMOVAL
COORDINATION PLAN
JULY 10, 2020
BSC GROUP

I CERTIFY TO THE BEST OF MY PROFESSIONAL KNOWLEDGE, INFORMATION AND BELIEF, THAT THIS PLAN IS BASED UPON AN ON-THE-GROUND SURVEY PERFORMED BY BSC GROUP, INC.

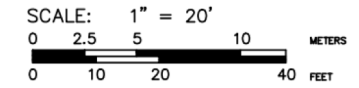
SEu
PROFESSIONAL LAND SURVEYOR
FOR BSC GROUP, INC.
DATE 03/16/2020



803 Summer Street
Boston, Massachusetts
02127

617 896 4300

© 2020 BSC Group, Inc.



PROJ. MGR.: A.SLOAT	
FIELD: M.ZOMPETTI	
CALC./DESIGN: M.HASSANOVA	
DRAWN: S.BONIN	
CHECK: A.SLOAT, S.EWALD	
FILE: P:\2341100\SD\F\2341100EC.dwg	
DWG.: 2341100EC	SHEET
JOB. NO: 2-3411.00	1 OF 1