

Historic Photos - Exterior



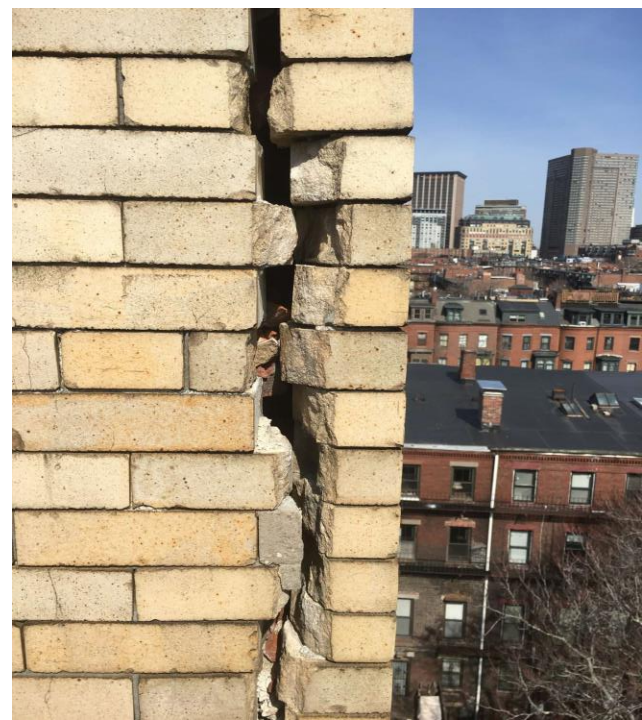
Parsonage and church (in snow) from West Newton St (date unknown)



Northwest corner of church from Tremont St before mural painted (ca. 1988)



Photos of mural painted (ca. 1989)





North Wall Damage Discovered

April 2018

- Scaffolding installed along north elevation
 - Discovered debris clogged primary roof drain had caused extensive damage to wall below
 - Gale initiated GPR scanning followed by additional test cuts which identified separation between the inner and outer courses
 - Mortar washout and deteriorated conditions full height of wall below clogged drain
 - Rotted timber and steel lintel with deteriorated masonry above preschool egress door to alley
 - Severely corroded steel beam supporting floor joists
 - Shoring required
 - Adjacent classroom closed





Tower Demolition

Approaches Design Elev.

May 2018

- **Poor masonry conditions still exist**
 - Demolition hammers loosen large areas of wall
 - Bricks removed easily by hand
 - Large sections of blonde brick “peeled” away with pry-bar...snapped headers
 - Severely deteriorated joint mortar
- **SGH to provide 2nd opinion on wall integrity and validate Gale’s findings:**
 - SGH agreed with Gale’s assessment that masonry deterioration too extensive to support weight of new belfry and spire

