





40









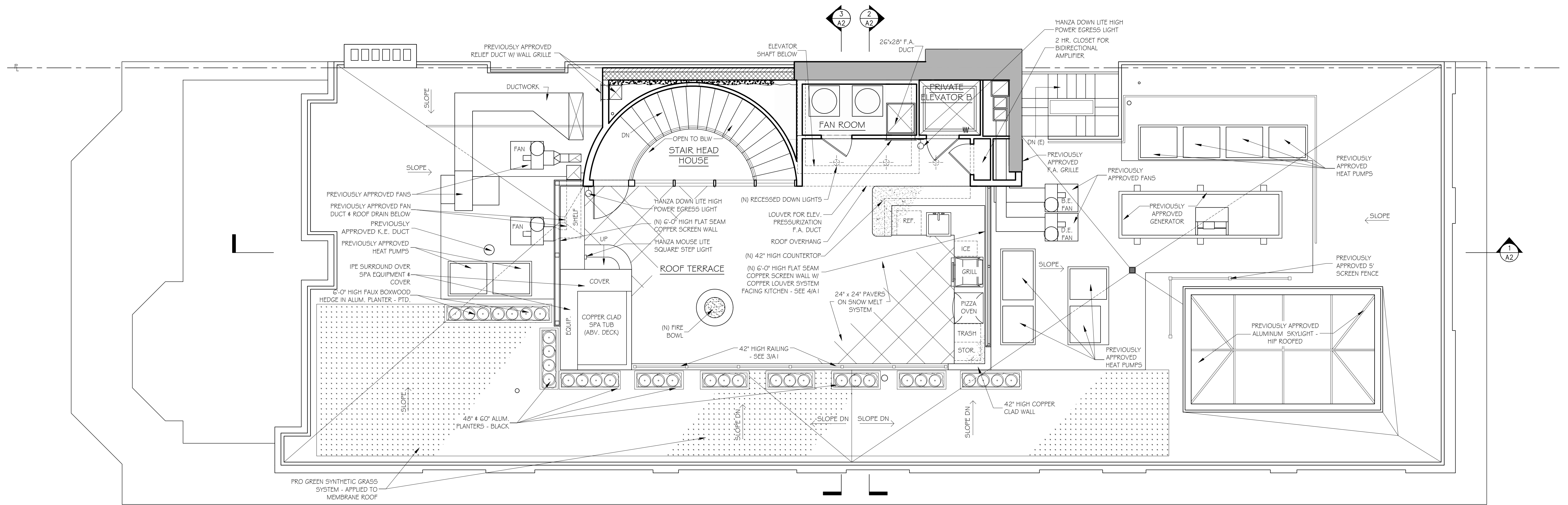


rigidCoil
SUITABLE FOR
OUTDOOR USE

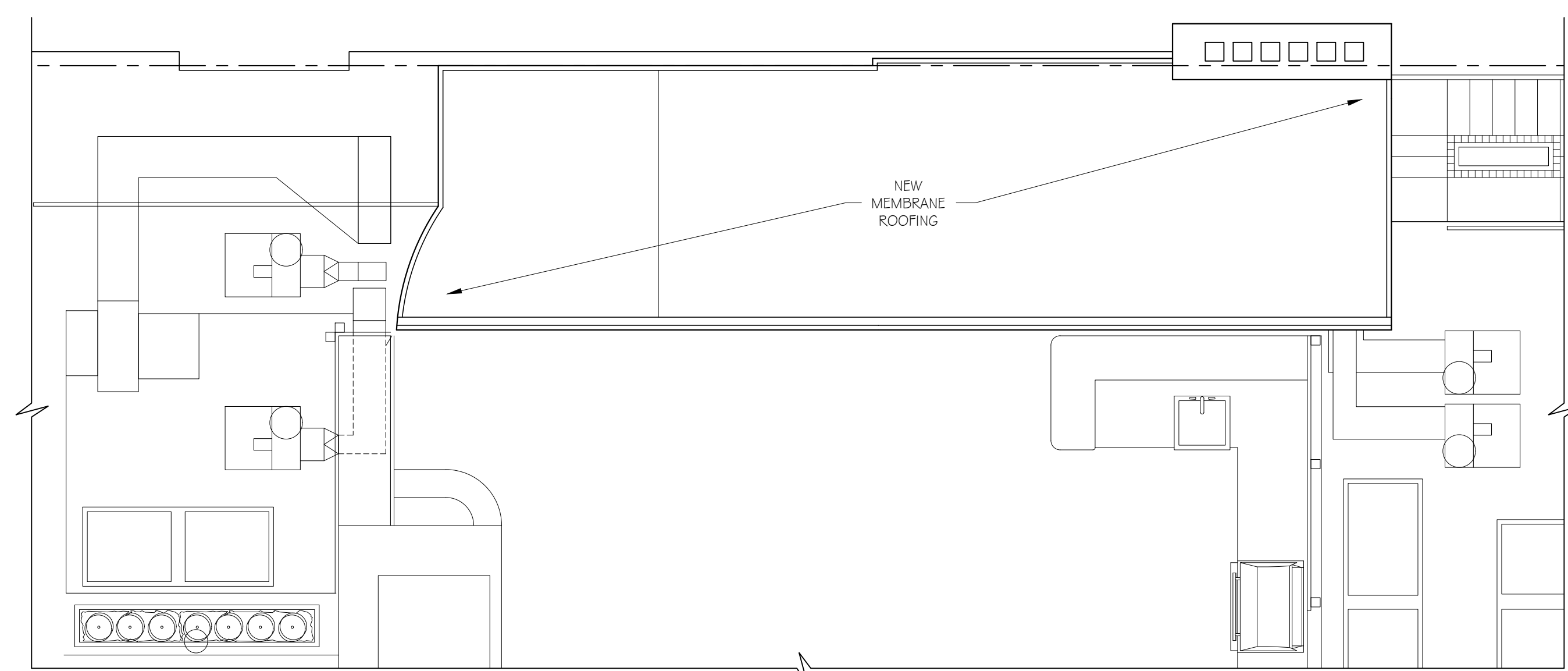




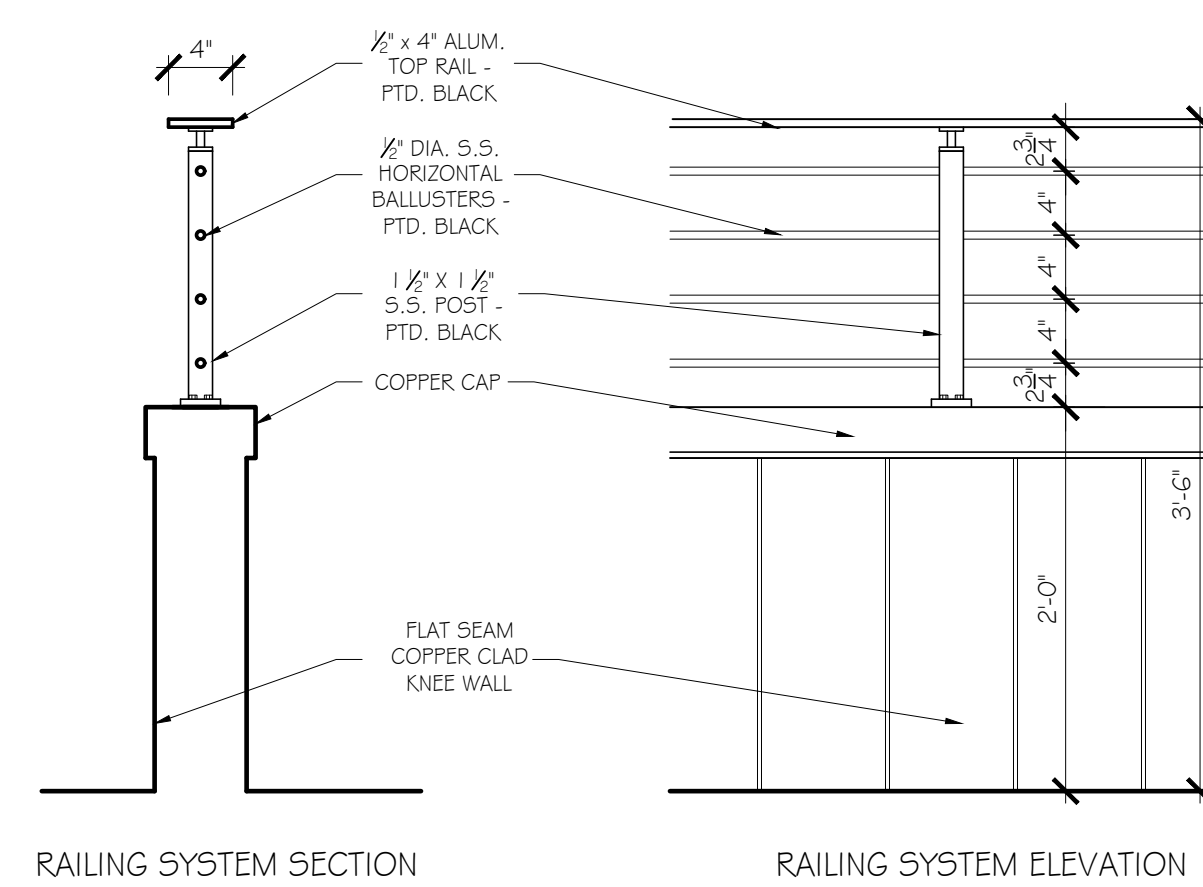




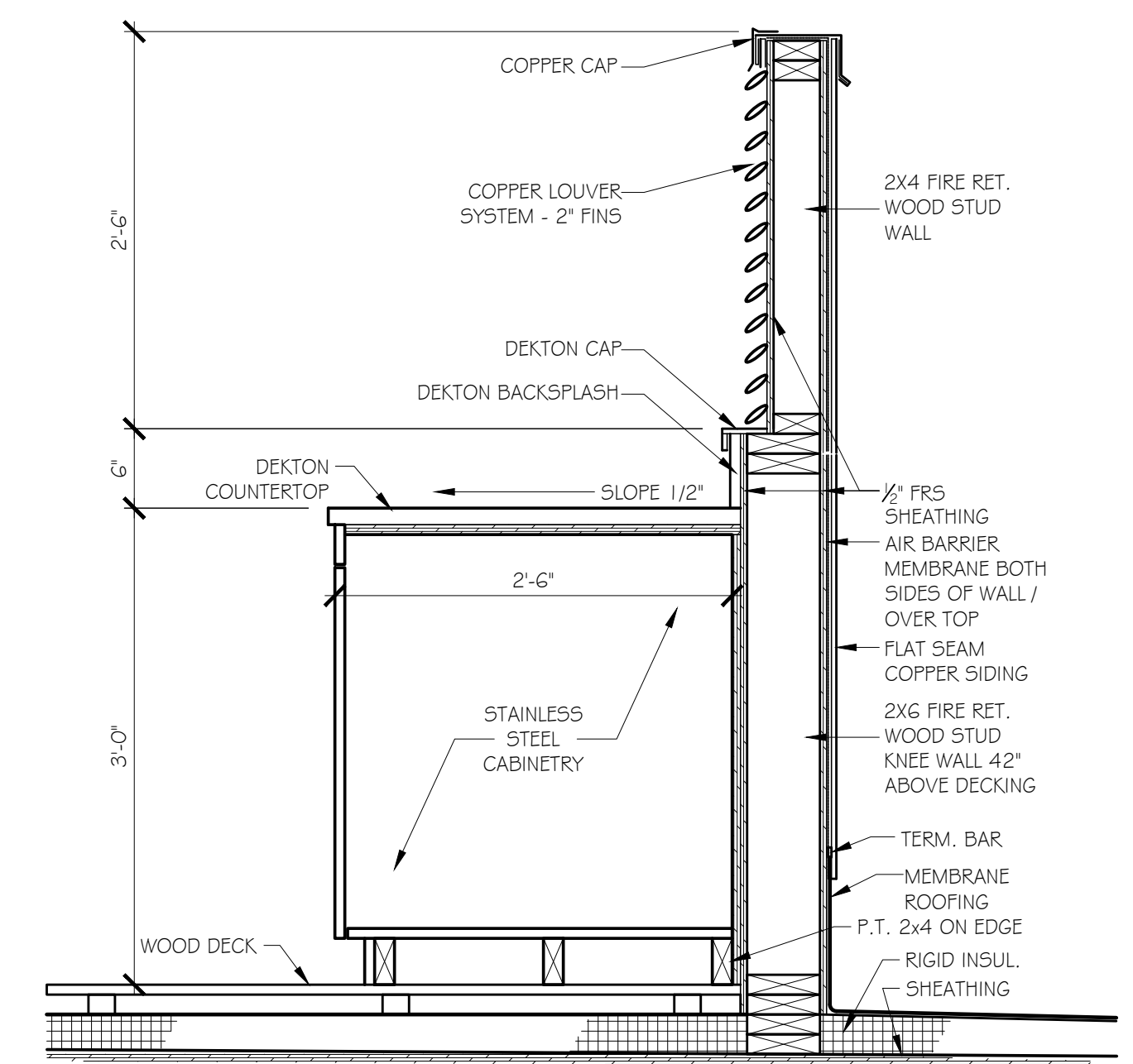
1 ROOF PLAN
 $\frac{1}{4}'' = 1'-0''$



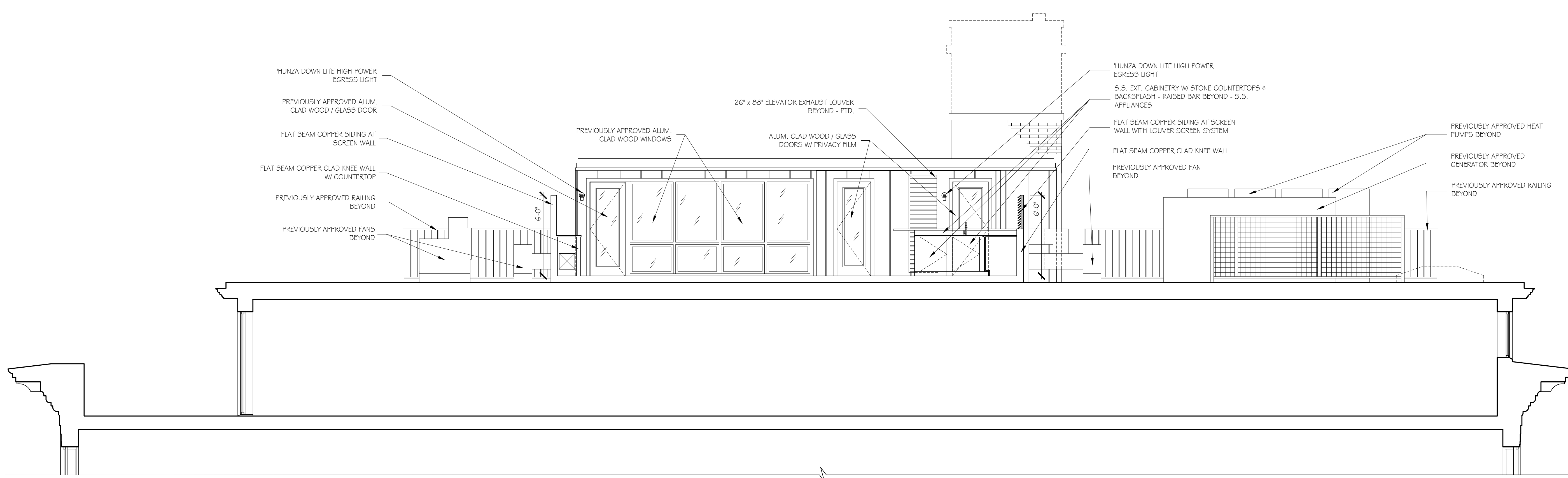
2 HEAD HOUSE ROOF PLAN
 $\frac{1}{4}'' = 1'-0''$



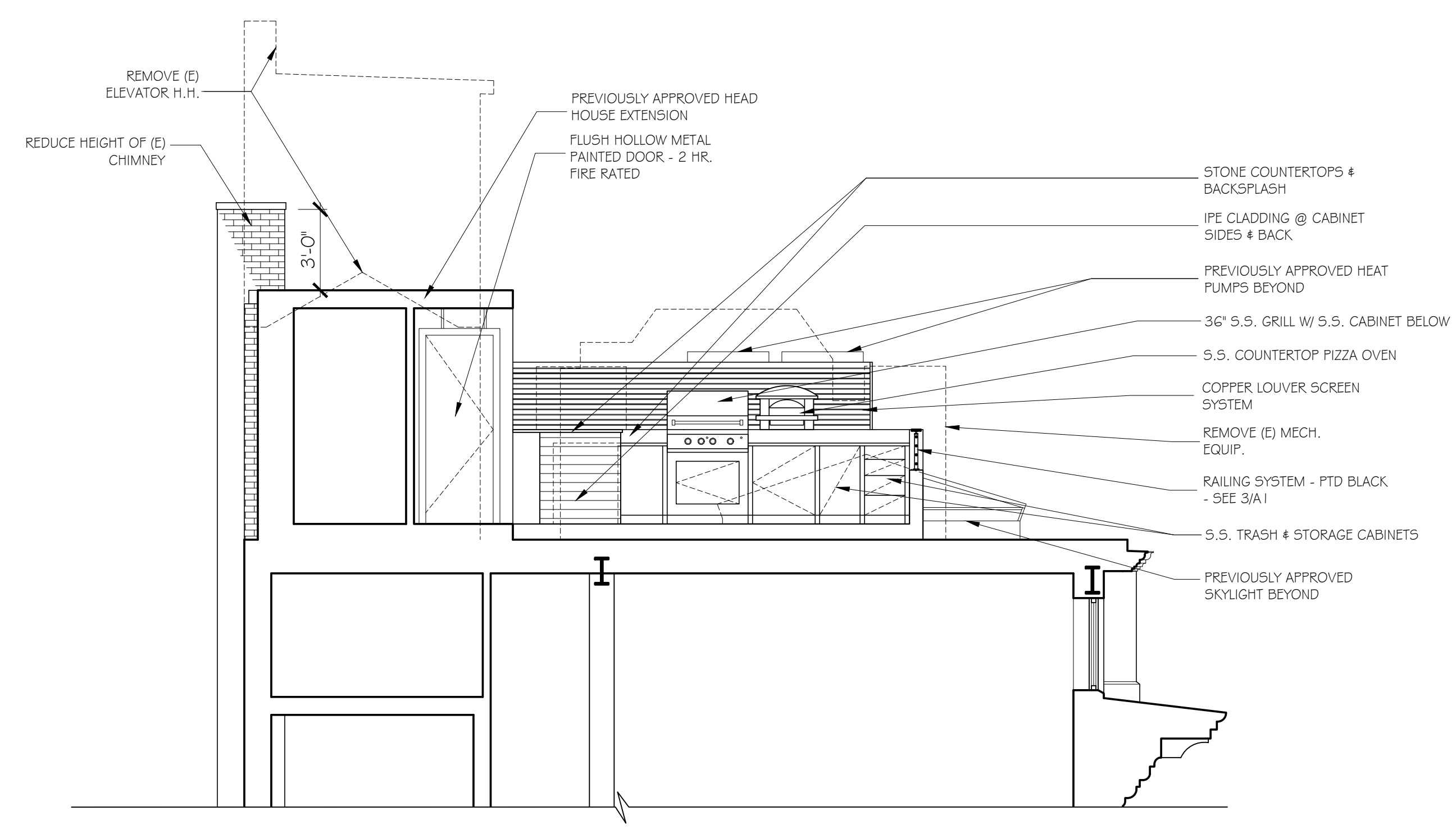
3 RAILING SYSTEM DETAIL
 $1'' = 1'-0''$



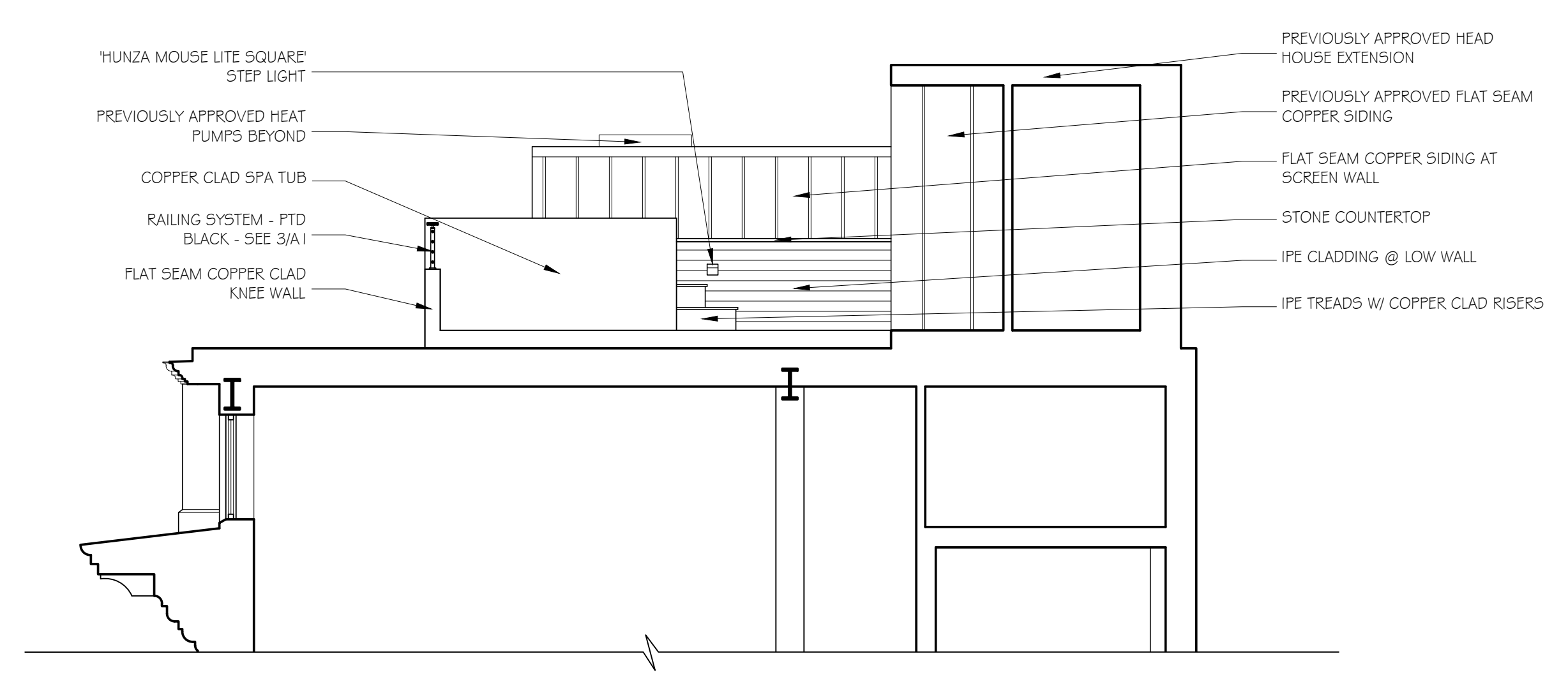
4 SCREEN WALL DETAIL @
 OUTDOOR KITCHEN
 $1'' = 1'-0''$



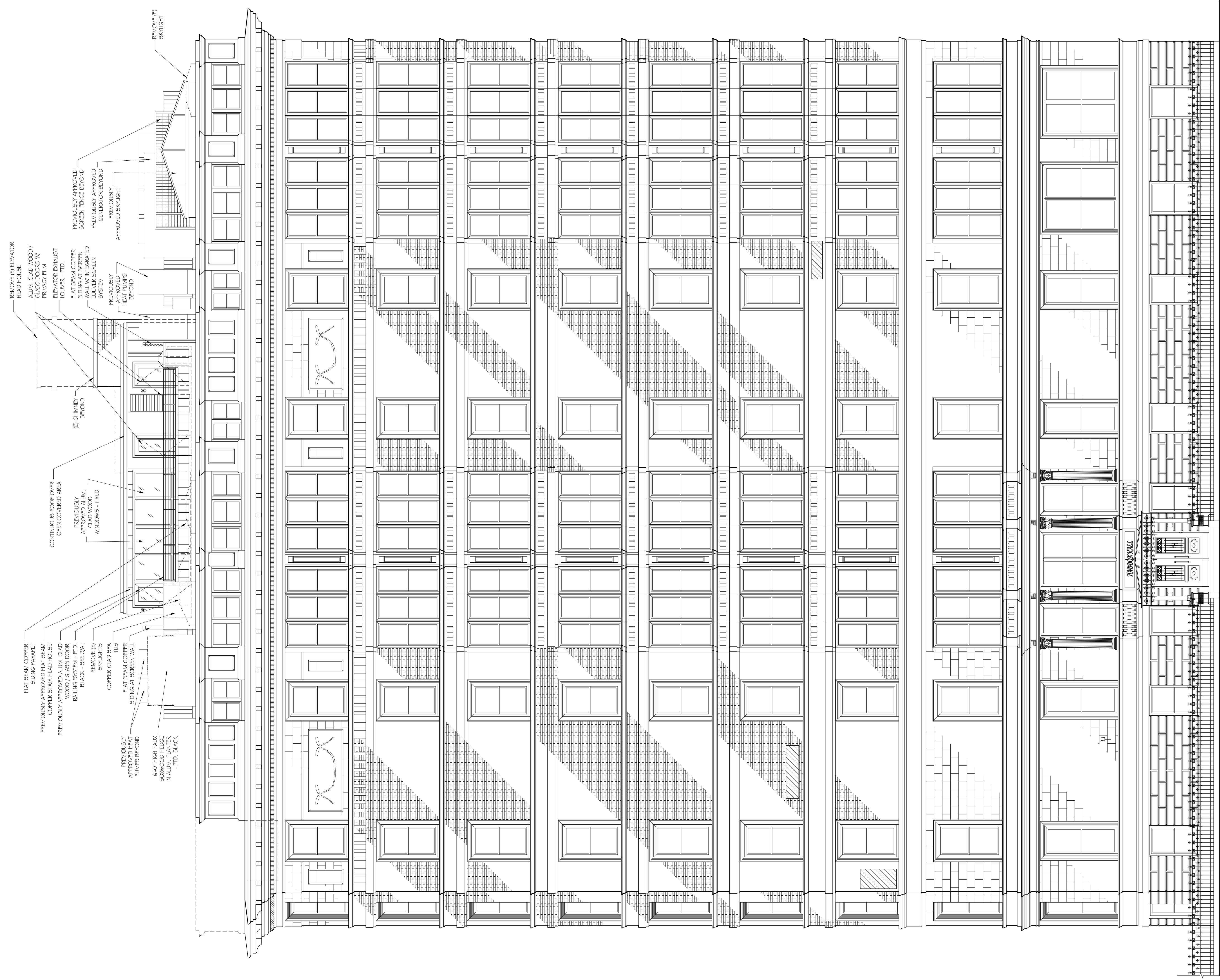
1 ROOF DECK SECTION LOOKING WEST
 1/4" = 1'-0"



2 ROOF DECK SECTION LOOKING NORTH
 1/4" = 1'-0"



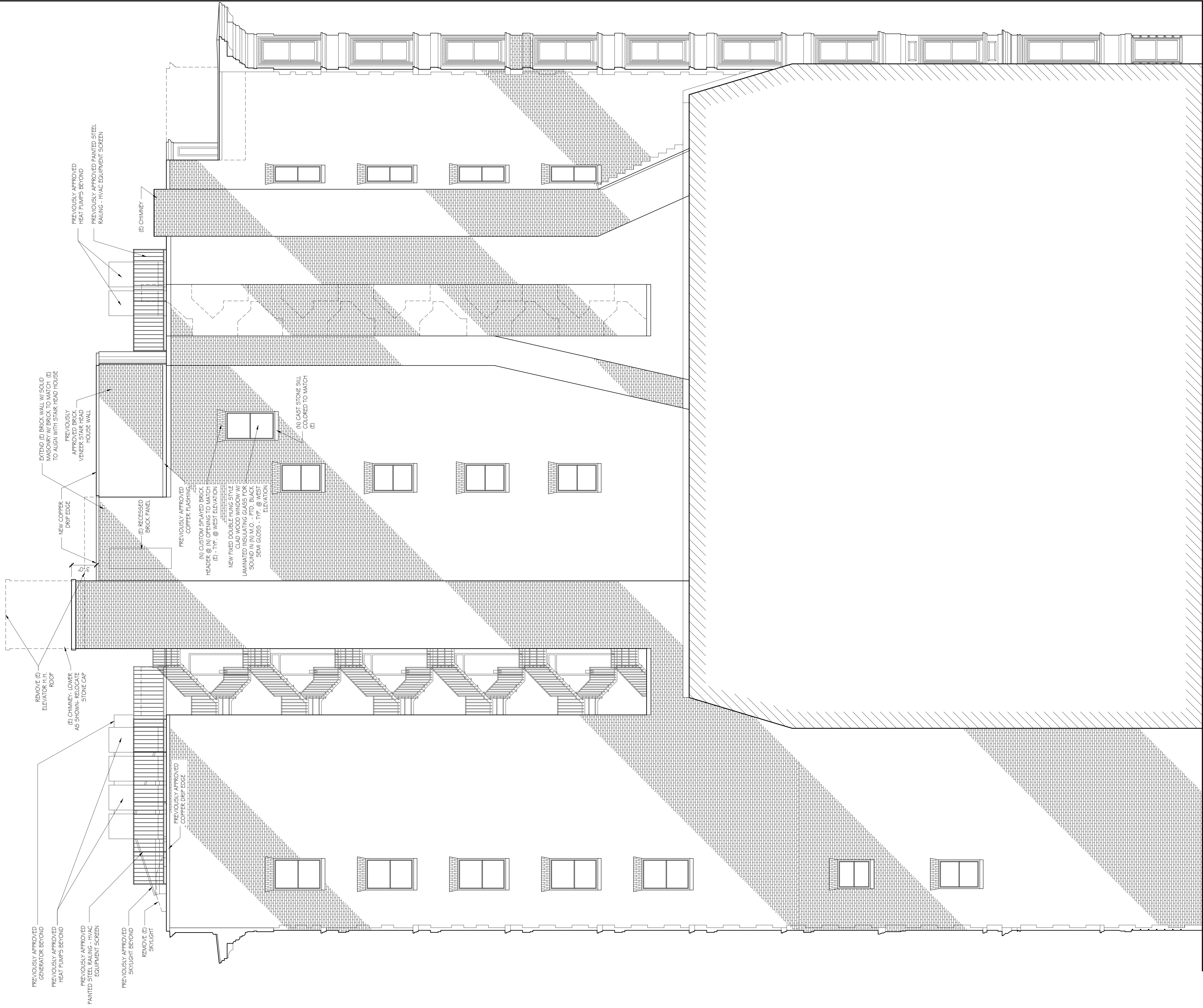
3 ROOF DECK SECTION LOOKING SOUTH
 1/4" = 1'-0"



EAST ELEVATION
 $\frac{3}{16}'' = 1'-0''$

A3	EAST ELEVATION	29 COMMONWEALTH AVE. BOSTON, MASSACHUSETTS	GD BG GARDNER GREENBERG ARCHITECTS	JOB NO: 1610 SCALE: $\frac{3}{16}'' = 1'-0''$ DATE: 3-17-20	46 Waltham Street Suite 500 Boston, MA 02118 Phone: 617-552-9600 Fax: 617-552-9603
				REVISIONS _____ _____ _____	B E A U C H E M N G R A S S I N T E R I

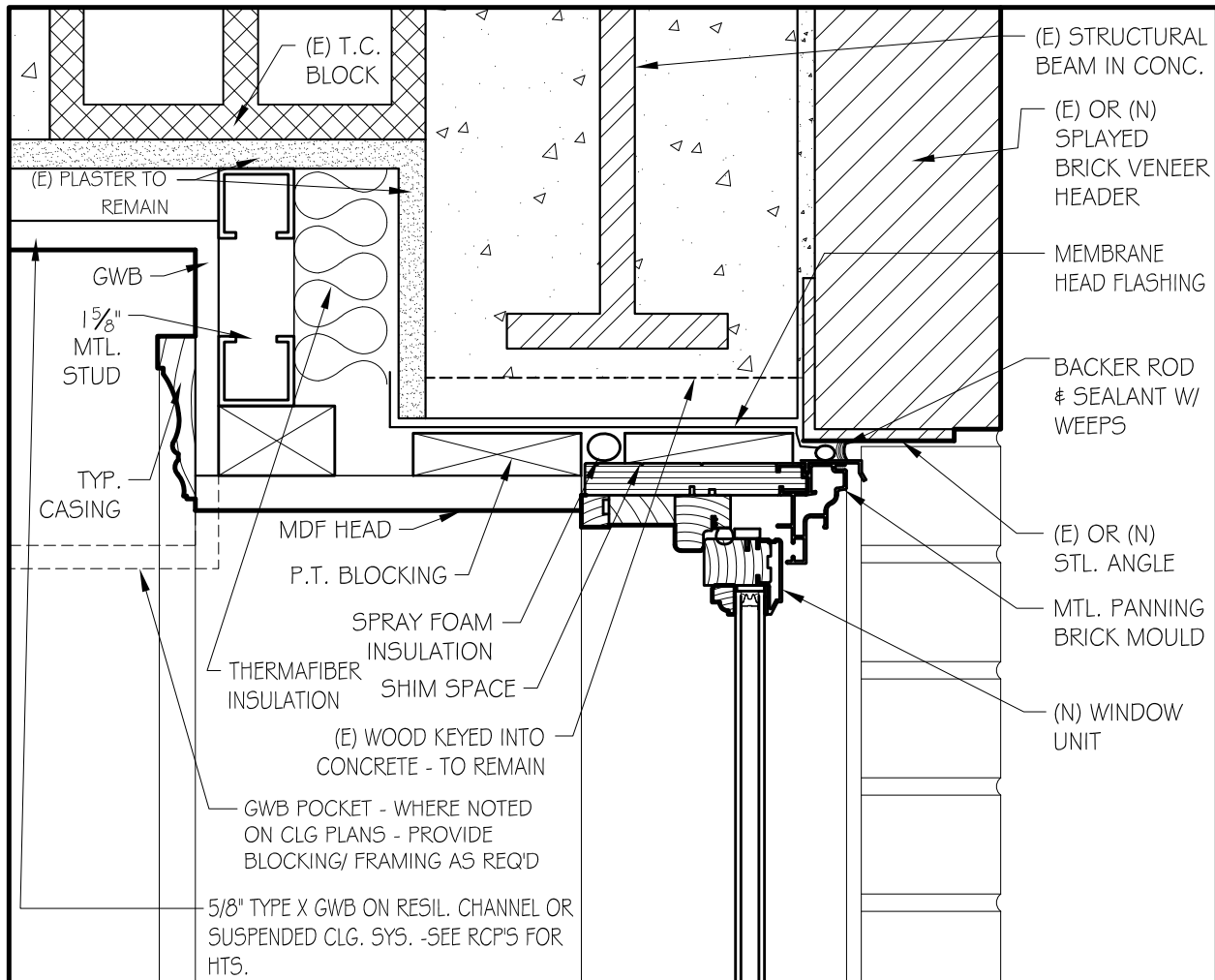




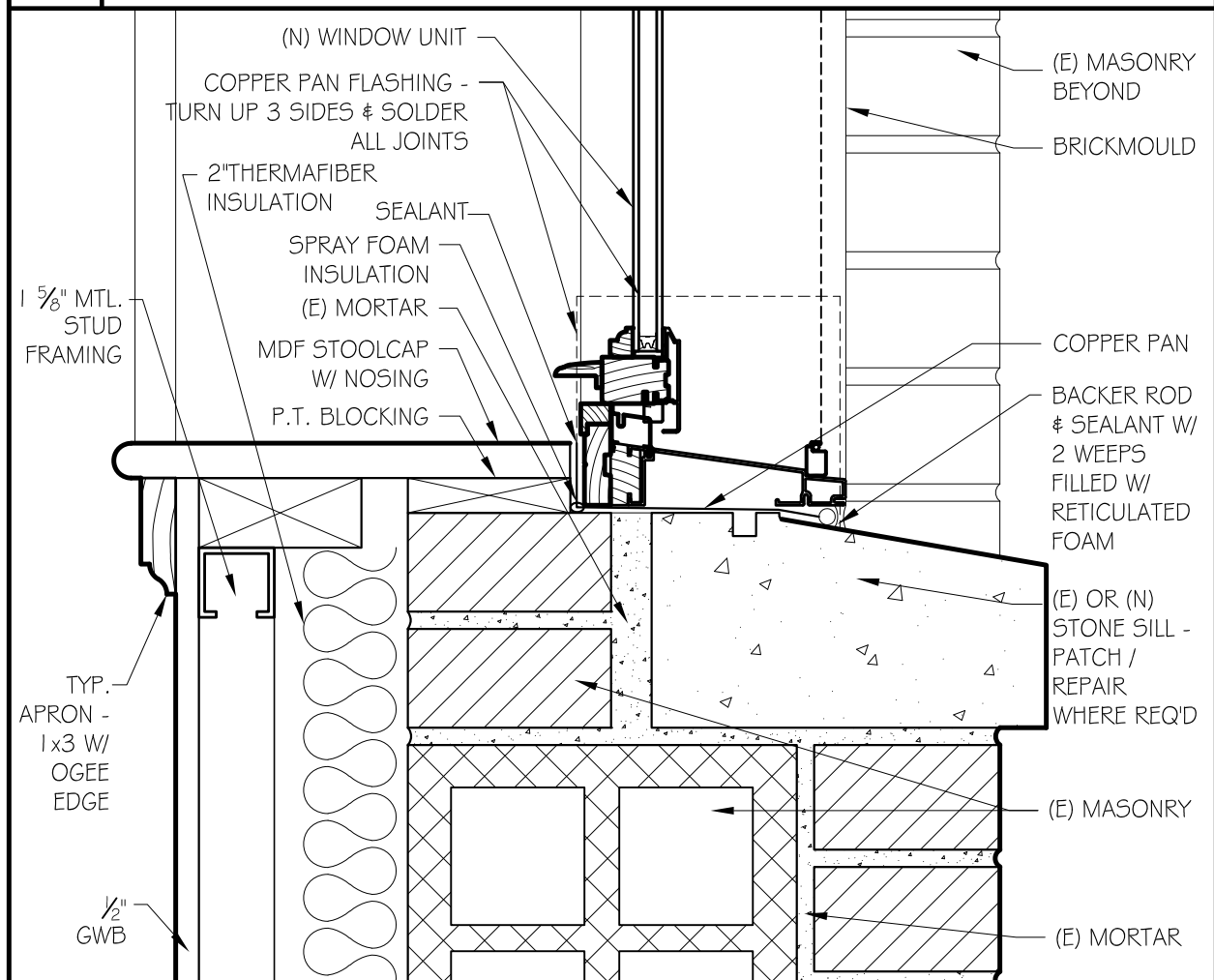
PREVIOUSLY APPROVED GENERATOR BEYOND HEAT PUMPS BEYOND
 PREVIOUSLY APPROVED PAINTED STEEL RAILING - HVAC EQUIPMENT SCREEN
 PREVIOUSLY APPROVED SKYLIGHT BEYOND REMOVE (E) SKYLIGHT
 REMOVE (E) CHIMNEY - LOWER ELEVATOR R.H. ROOF AS SHOWN - REDDUCATE STONE CAP
 NEW COPPER DRIF EDGE
 EXTEND (E) BRICK WALL W/ SOLID MASONRY W/ BRICK TO MATCH (E) APPROVED BRICK VENER STAIR HEAD HOUSE WALL
 PREVIOUSLY APPROVED PAINTED STEEL RAILING - HVAC EQUIPMENT SCREEN HEAT PUMPS BEYOND
 (E) CHIMNEY
 (E) RECESSED BRICK PANEL
 PREVIOUSLY APPROVED COPPER FLASHING
 (N) CUSTOM SHAVED BRICK HEADERS @ WEST ELEVATION (E) - 1" X 1" @ WEST ELEVATION
 NEW FIXED DOUBLE HUNG STYLE CLAD WOOD WINDOW W/ LAMINATED INSULATING GLASS FOR SOUND IN (N) W.C. - 1" PD. BLACK 25W GLASS - 1" ELEVATION
 (N) CAST STONE SILL COLORED TO MATCH (E)

WEST ELEVATION
 $\frac{3}{16}'' = 1'-0''$

A5	WEST ELEVATION	29 COMMONWEALTH AVE. BOSTON, MASSACHUSETTS	<table border="1"> <tr> <td>JOB NO: 1610</td> <td>SCALE: $\frac{3}{16}'' = 1'-0''$</td> </tr> <tr> <td>DATE: 3.17.20</td> <td>REVISED</td> </tr> </table>	JOB NO: 1610	SCALE: $\frac{3}{16}'' = 1'-0''$	DATE: 3.17.20	REVISED	<table border="1"> <tr> <td style="text-align: center;">GD</td> <td style="text-align: center;">BG</td> </tr> </table>	GD	BG	BEAUCHEMIN GRASSINIERI ARCHITECTS 46 Waltham Street Suite A Boston, MA 02118 Phone: 617-552-9900 Fax: 617-552-9903
	JOB NO: 1610	SCALE: $\frac{3}{16}'' = 1'-0''$									
DATE: 3.17.20	REVISED										
GD	BG										



1 TYPICAL WINDOW HEAD @ (E) OR (N) M.O. 3" = 1'-0"



2 TYPICAL WINDOW SILL @ (E) OR (N) M.O. 3" = 1'-0"

JOB NO: 1610

SCALE:
3" = 1'-0"

DATE: 03.17.20

NEW WINDOWS IN EXISTING OR NEW MASONRY OPENING DETAILS

1 Countertops & Backsplash

DEKTON

- Color: Vera
- Available in 5 thicknesses 4, 8,12,20 and 30 mm



2 Cabinets

Kalamazoo

- Brushed Stainless Steel
- Match Appliances



3 Back Side of Cabinets at Bar Seating

WOOD

- Ipe



4 Screen Wall

Custom

- Copper wall with copper fins



5 Appliances

Kalamazoo

- Brushed Stainless Steel
- See next page for kitchen details

1) FRIDGE/FREEZER
PAGE 3

2) SINK
PAGE 3

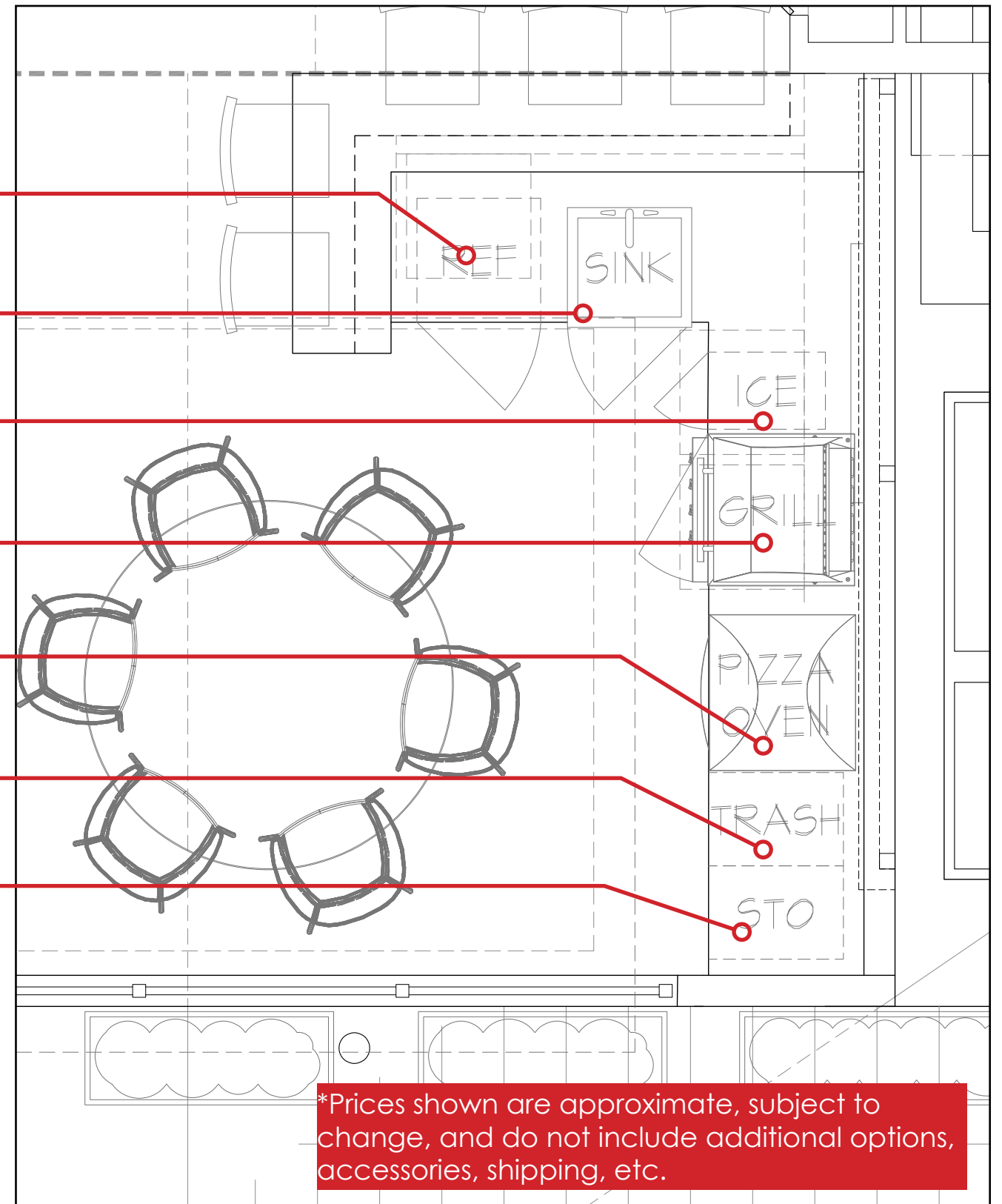
3) ICE
PAGE 3

4) GRILL
PAGE 4

5) PIZZA OVEN
PAGE 4

6) TRASH
PAGE 4

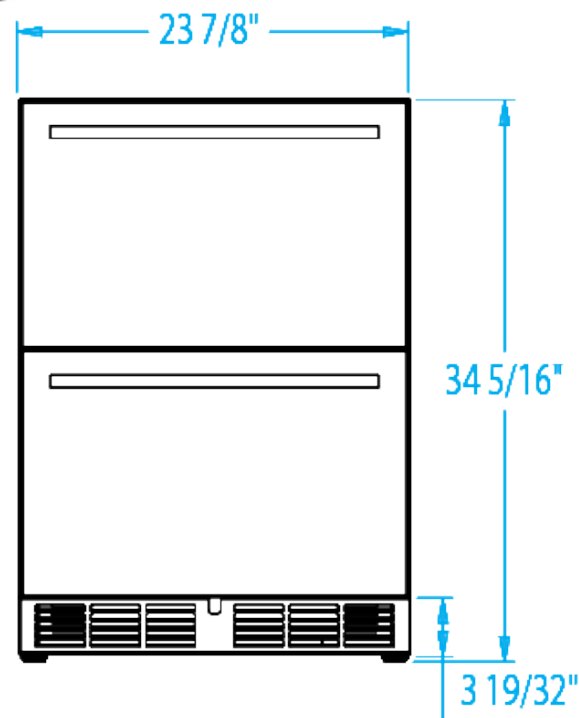
7) STORAGE
PAGE 4



1 Kalamazoo - 24" Refrigerated Drawers

- (2) full-extension stainless steel drawers
- 33°F to 39°F temperature
- 5.2 cubic feet capacity
- Option for fridge/freezer combo

~\$4,850



2 Sink

Custom

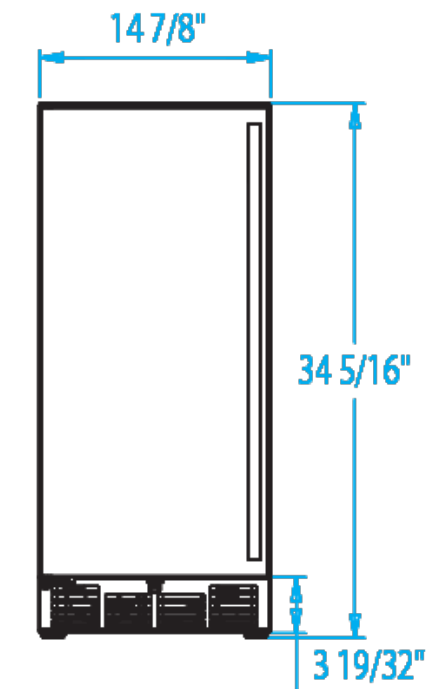
- Custom built-in sink using Dekton



3 Kalamazoo - 15" Ice Maker

- Clear ice production
- Top hat ice shape
- Produces up to 55 lbs in 24 hrs
- Optional drain pump
- 22 lb. storage capacity

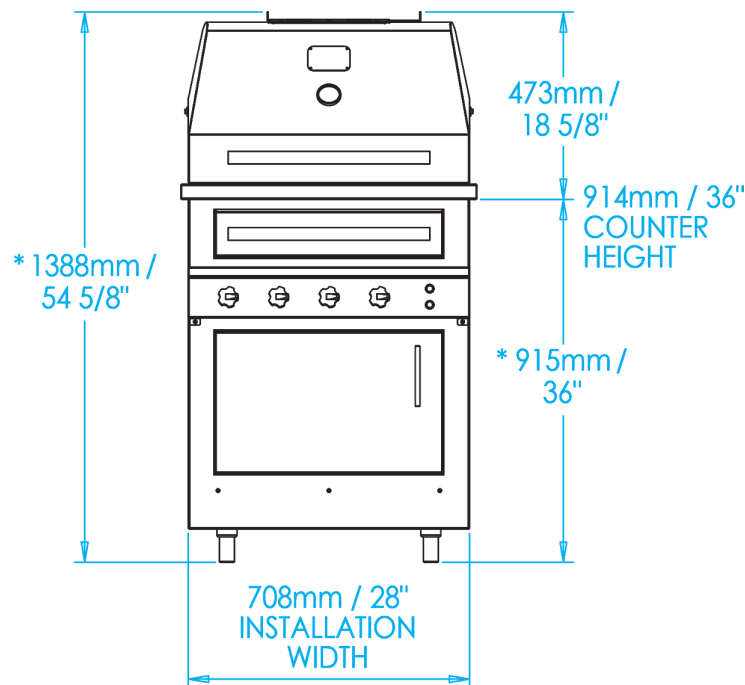
~\$3,780



4 Kalamazoo - K500 Built-in Hybrid Grill

- (2) 25,000 BTU burners
- Rotisserie system
- Flip-up warming rack
- Hybrid fire grilling drawer for wood and charcoal

~\$14,600

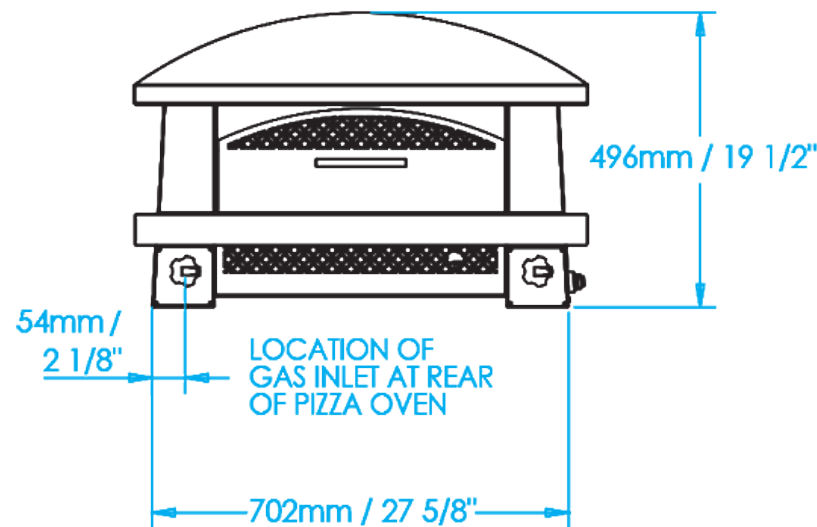


* HEIGHT ADJUSTABLE +/-32mm / 1 1/4"

5 Kalamazoo - Countertop Pizza Oven

- Temp. range 350°F to 800°F
- (2) burners
- Hollow-core ceramic cooking deck
- Battery powered ignition, no elec. required

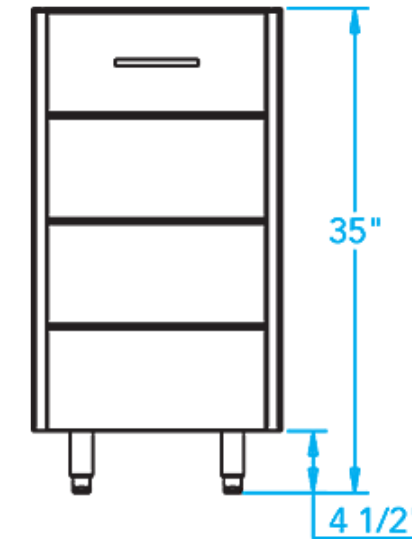
~\$8,995



6 Kalamazoo - 18" Trash Cabinet

- Stainless steel finish
- Fits 30" deep system

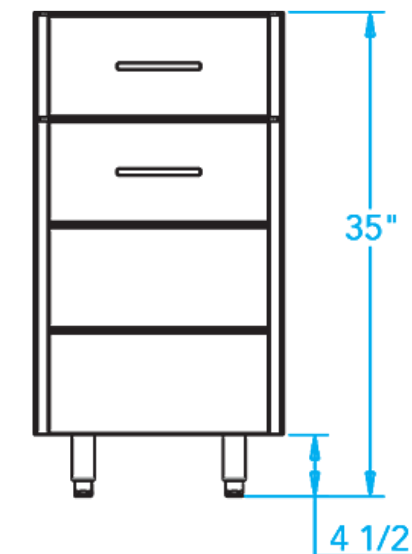
~\$4,255



7 Kalamazoo - 18" Drawer over Door

- Stainless steel finish
- Fits 30" deep system
- Also available in 3-drawer

~\$4,140



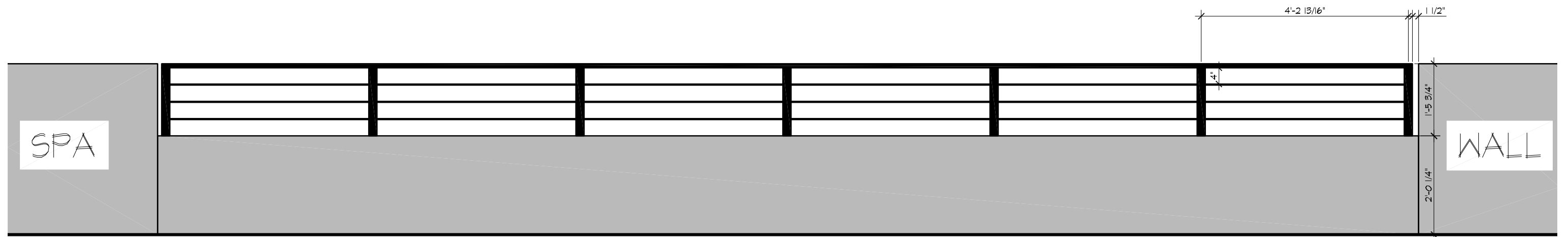
1 Railing System

Viewrail

- Rod Railing System
- Matte Black
- Aluminum Beverage Handrail



Drink Rail



1 Spa

Diamond Spa

- Spa material is copper
- Top surround over equipment and autocover is ipe wood
- Ipe tread step with copper risers



1 Removable Shelf Countertop

DEKTON

- Color: Vera
- Available in 5 thicknesses 4, 8, 12, 20 and 30 mm



2 Removable Shelf Base & Screen Wall

Copper



3 Screen Wall at South Utilities

New Growth Designs

- Faux Boxwood Hedge
- Total height: 72"



1 Pavers

Tile Tech Porcelain

- Tan-Seashell
- 24" x 24" x 3/4" thk
- 36lb

- snow melt
- frost resistant
- greater than 2250 lbf breaking strength ISO



Picture indicates pavers only



2 Planters

Pots Planters & More

- Pearson Large Aluminum Planter Box (Matte Black)
- 48"L x 16"W x 24"H, ~45lbs
- 60"L x 16"W x 32"H, ~71lbs



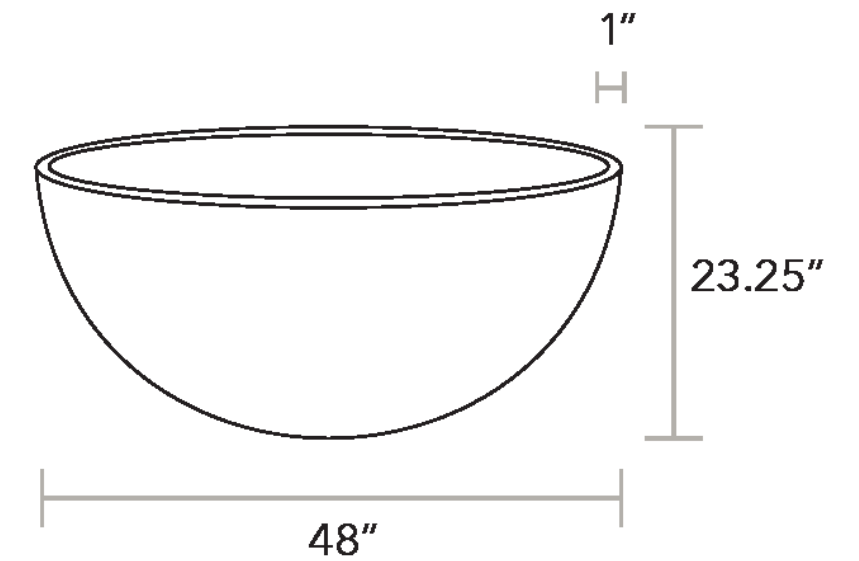
Plant Material for Planters:

- (A) Calamagrostis x acutiflora 'Karl Foerster'
- (B) Pennisetum alopecuroides 'Hameln'



3 Solus - 48" Hemi Firebowl

- 10,000 psi concrete
- Available in 26", 36", 48"
- Manual, electronic or adjustable auto start options
- 10 color options
- Natural gas or propane
- 48" is 316 lbs



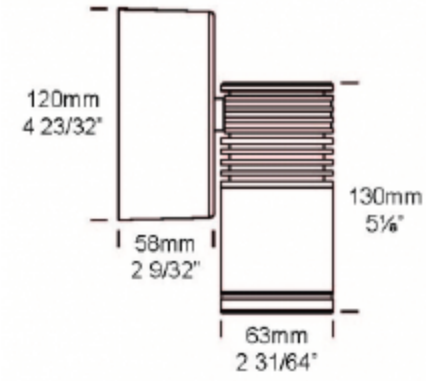
STEP LIGHT

Hunza Lighting
Mouse Lite Square



EGRESS LIGHTING

Hunza Lighting
Down Lite High Power



HEMI 36
ELECTRONIC START NG & LP

Fire is beautiful and also dangerous if not handled properly. Please have a qualified gas fitter setup and install this product according to local codes.

This product has been tested and certified by Labtest Certification Inc. as being safe, as long as these **minimum clearances** to adjacent materials are maintained.

FOR OUTDOOR USE ONLY

NORTH AMERICA SPECIFICATIONS

Gas type:	<u>Natural Gas</u>	<u>Propane</u>
Gas press:	3.5" - 7.0" w.c.	N/A
Electrical:	24V / 110 VAC	24V / 110 VAC
	1.5A, 60 hz	1.5A, 60 hz
BTU:	73,500	73,500

ANSI Z21.97-2014
CSA 2.41-2014



UK & EUROPEAN SPECIFICATIONS

Gas type:	<u>Natural Gas</u>	<u>Propane</u>
Gas press:	G20-20 mbar	G30-30 mbar
Electrical:	240~V, 0.13A	240~V, 0.13A
	50/60 hz	50/60 hz
	0.027kW	0.027kW
Heat Out:	G20/21.5	G30/21.5

EN 509:2000
EN 60335-1:2001

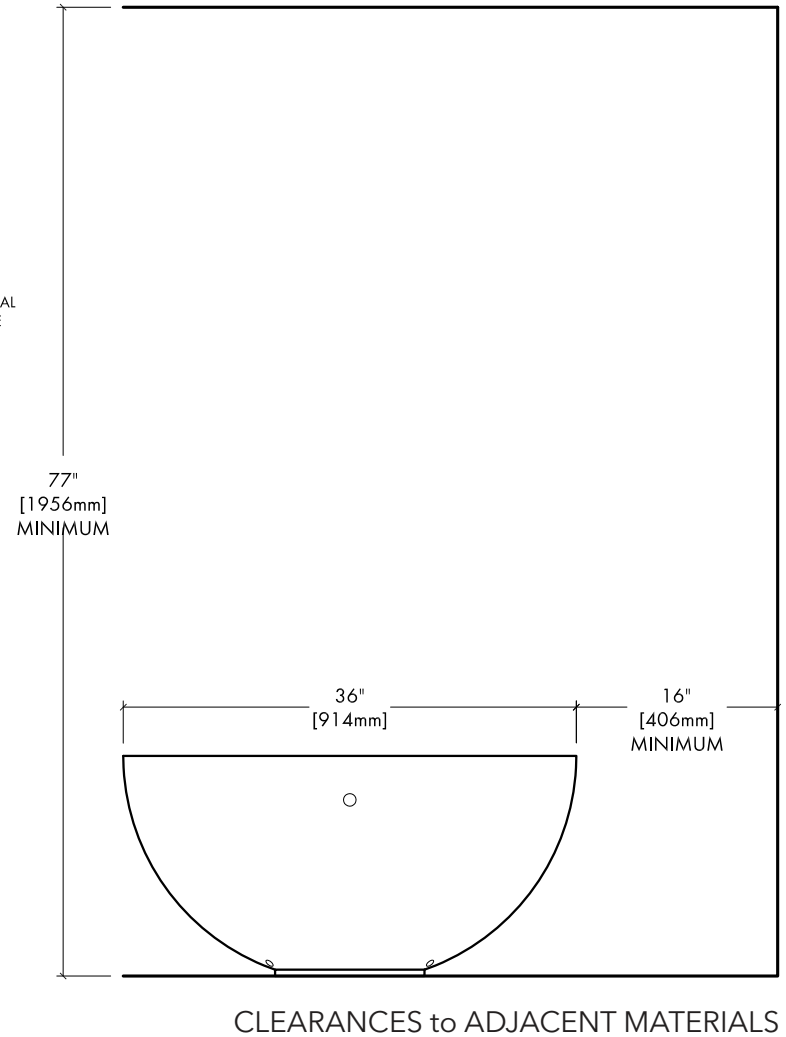
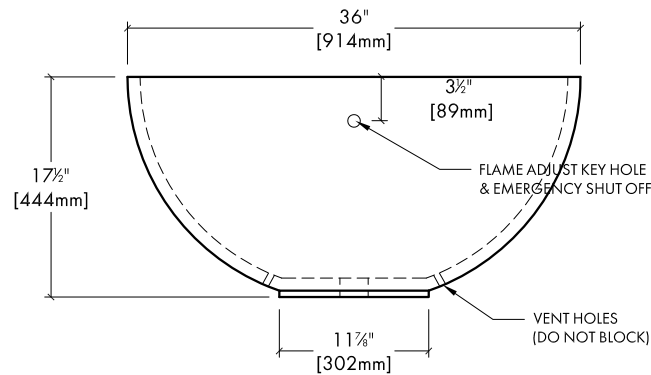
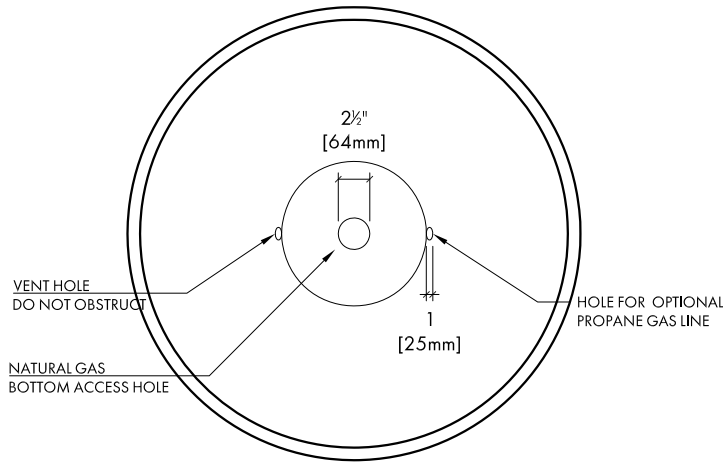


CONCRETE SPECS

Strength:	10,000 psi (proprietary)
Weight:	171 lbs / 78 kg

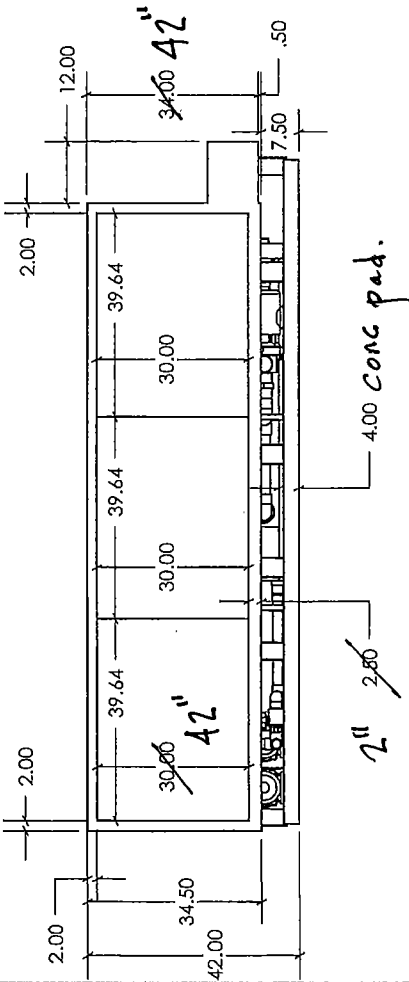
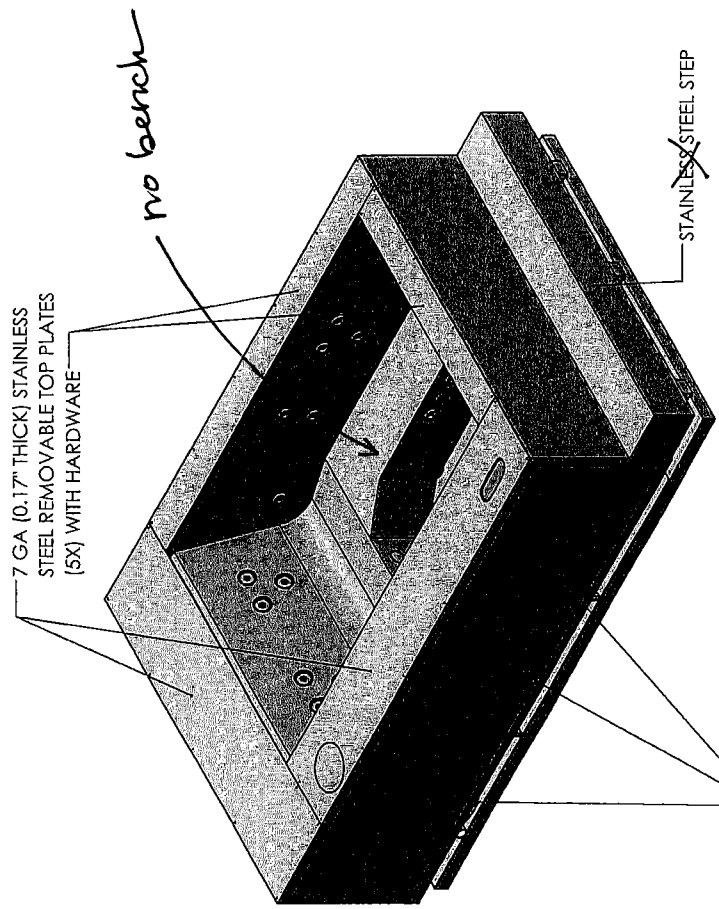
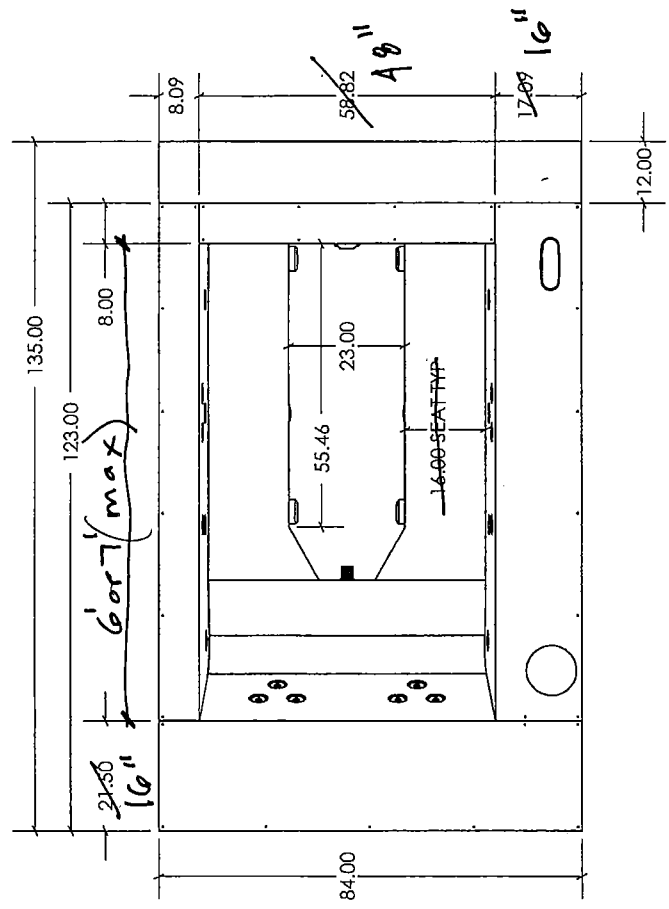
JOB / ORDER
Name or Number:

Signature & Date:

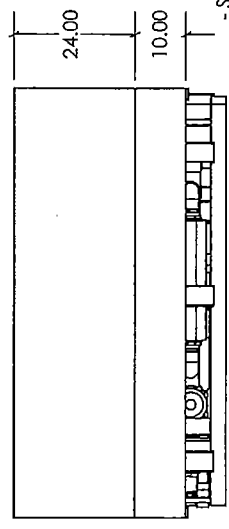


29 COMM AVE

THE INFORMATION CONTAINED IN THIS DRAWING IS THE SOLE PROPERTY OF DIAMOND SPAS INC. ANY REPRODUCTION IN PART OR WHOLE WITHOUT THE WRITTEN PERMISSION OF DIAMOND SPAS INC. IS PROHIBITED.



ACCESS PANELS WITH ROLLER LATCHES (3X)
SUCTION CUPS FOR PANEL REMOVAL TO BE SHIPPED WITH SPA



SPA DATA

- SPA SURFACE AREA = 37 SQ. FT.
- SPA CAPACITY = 478 GALLONS
- SPA WATER WEIGHT = 3987 LBS.
- SPA SHELL WEIGHT = 2845 LBS.
- SPA TOTAL WEIGHT = 6832 LBS.

IAPMOEGS WHIRLPOOL 3064

UNLESS OTHERWISE SPECIFIED DIMENSIONS ARE IN INCHES. DO NOT SCALE DRAWING	DRAWN	MR
MATERIAL 316 & 304 STAINLESS STEEL	CHECKED	
FINISH ROTARY HAND BRUSHED	REVISION	G
	SHEET	2 of 8

DIMENSIONS ARE IN INCHES
TOLERANCES:
FRACTIONAL ± 1/4"
TWO PLACE DECIMAL ± 0.25"

- NOTES:
- due to the custom nature and welding processes involved in fabrication, there may be some distortion or warping of the flat surfaces on our products.
 - all inside weld seams will be visible.
 - spa will be insulated with a 2-part polyurethane foam.
 - standard foam, snap-lock cover to be supplied w/ spa.

4409 Corollis Way
Frederick, CO 80504
ph. 720-864-9115
1-800-957-SPAS
fax. 1-866-605-2358

Call Us

855-464-8873

Find a Local Dealer

Become a Dealer

HOME

COMMERCIAL

RESIDENTIAL

WHY PROGREN?

FAQS

BLOG

CONTACT US

NATURAL REAL SUPREME



APPLICATIONS

- Heavy foot traffic
- Residential Landscape (Front & Backyards)
- Surrounding Poolscales
- Common Space in & Around Commercial Properties

Specifications

- **Primary Yarn Face:** 10,080/8 denier monofilament Field Green/ Olive Green
- **Thatch Yarn:** 4800 texturized Polyethylene thatch, Field Green/Beige
- **Pile Height:** 1.75"
- **Face Weight:** 75 oz. per sq yd
- **Primary Backing:** Proprietary QuadriBIND™ Backing
- **Secondary Backing:** ProFlow patent pending backing
- **Total Product Weight:** 96 oz. per sq yd
- **Perforations:** No perforations
- **Warranty:** 15 year (See full warranty for terms & conditions)

REQUEST A COMPLIMENTARY ESTIMATE

Interested in getting artificial grass installed in your home or business? Don't hesitate to contact us for a free estimate today!



ProGreen Head Office

146 Fairchild Street, Suite 150
Daniel Island, South Carolina
29492

855-464-8873

Fields marked with an * are required

First Name *

Last Name *

Phone

Zip *

Email *

Sign me up for the ProGreen Newsletter

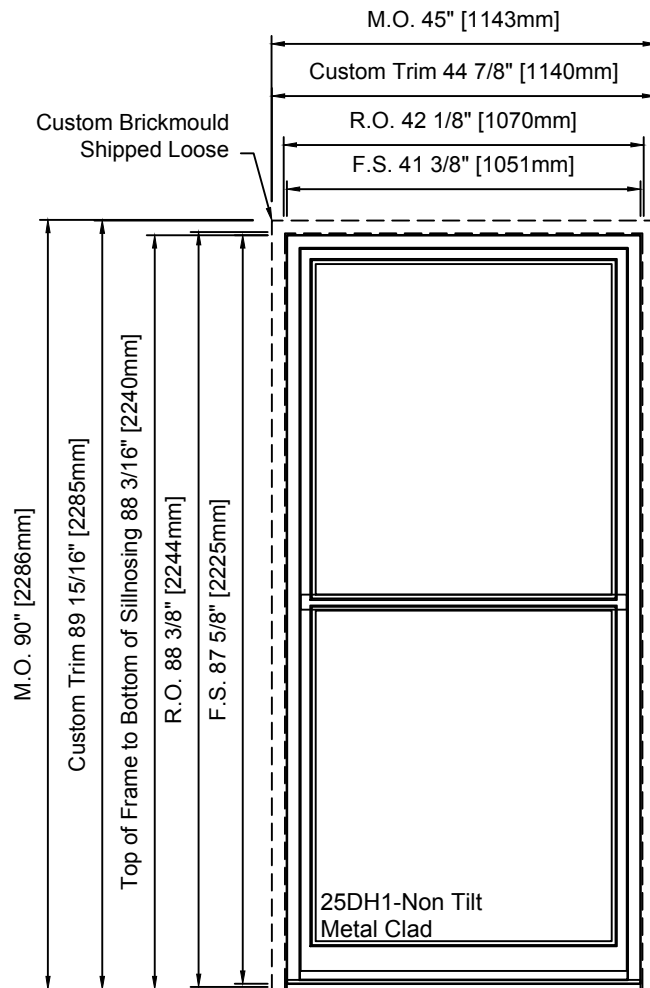
Submit

[Become a Dealer](#)

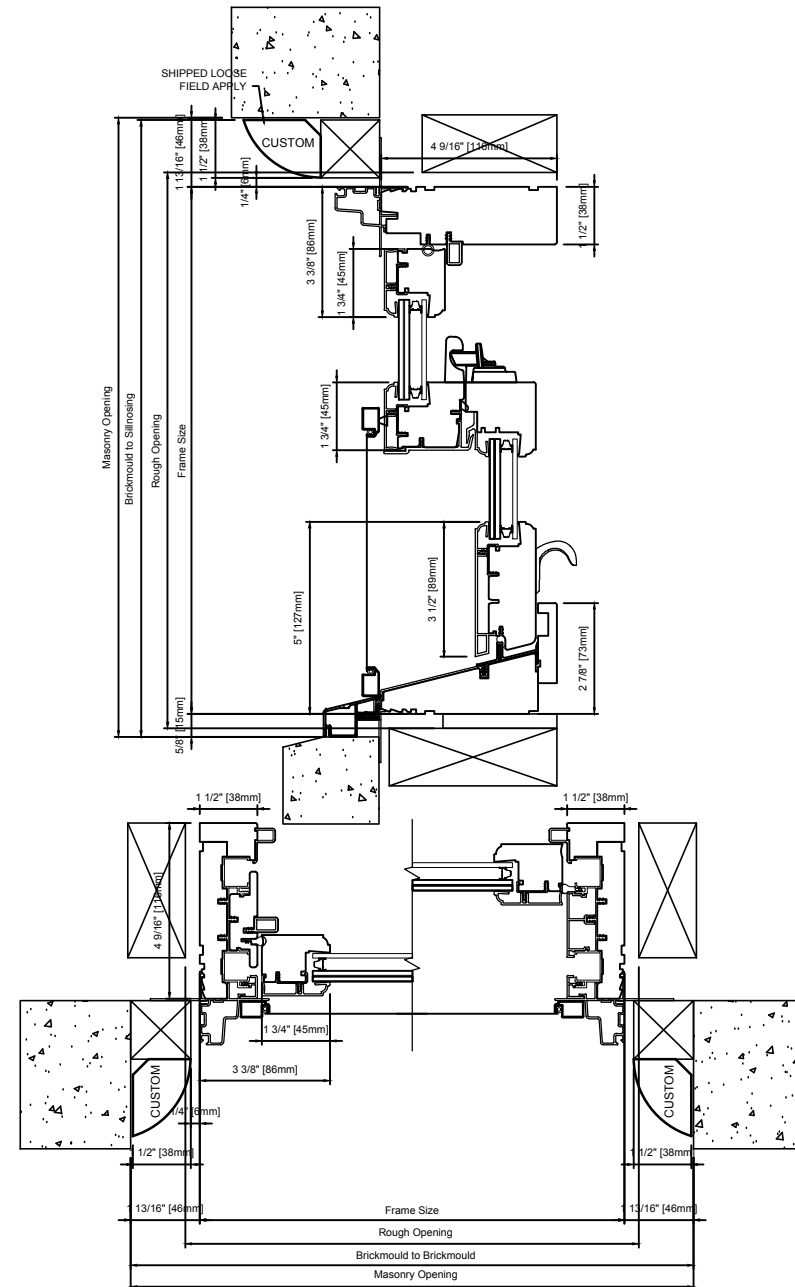
[Dealer Login](#)

[Make a Payment](#)

[Privacy Policy](#)



- 4C:QTY.1
- 4E 4F 4I 4J 4M:QTY.5
- 5C:QTY.1
- 5E 5F 5I 5J 5M:QTY.5



Sales Order No:	Signature:	Requester: Rosanne Vaz	Project Name: 29 Commonwealth Ave	Unit ID: 27251-21-01A
Detailed by:	NOTE: STRUCTURAL SUPPORT MAY BE REQUIRED AROUND & BETWEEN MULLED UNITS. THE SIZE & TYPE TO BE DETERMINED BY A STRUCTURAL ENGINEER.	COS Contact: Rosanne Vaz	Date: 25SEP2019	Drawn by: Marina F
Detailed On:		Company: Specialty Builders Supply Inc.		

