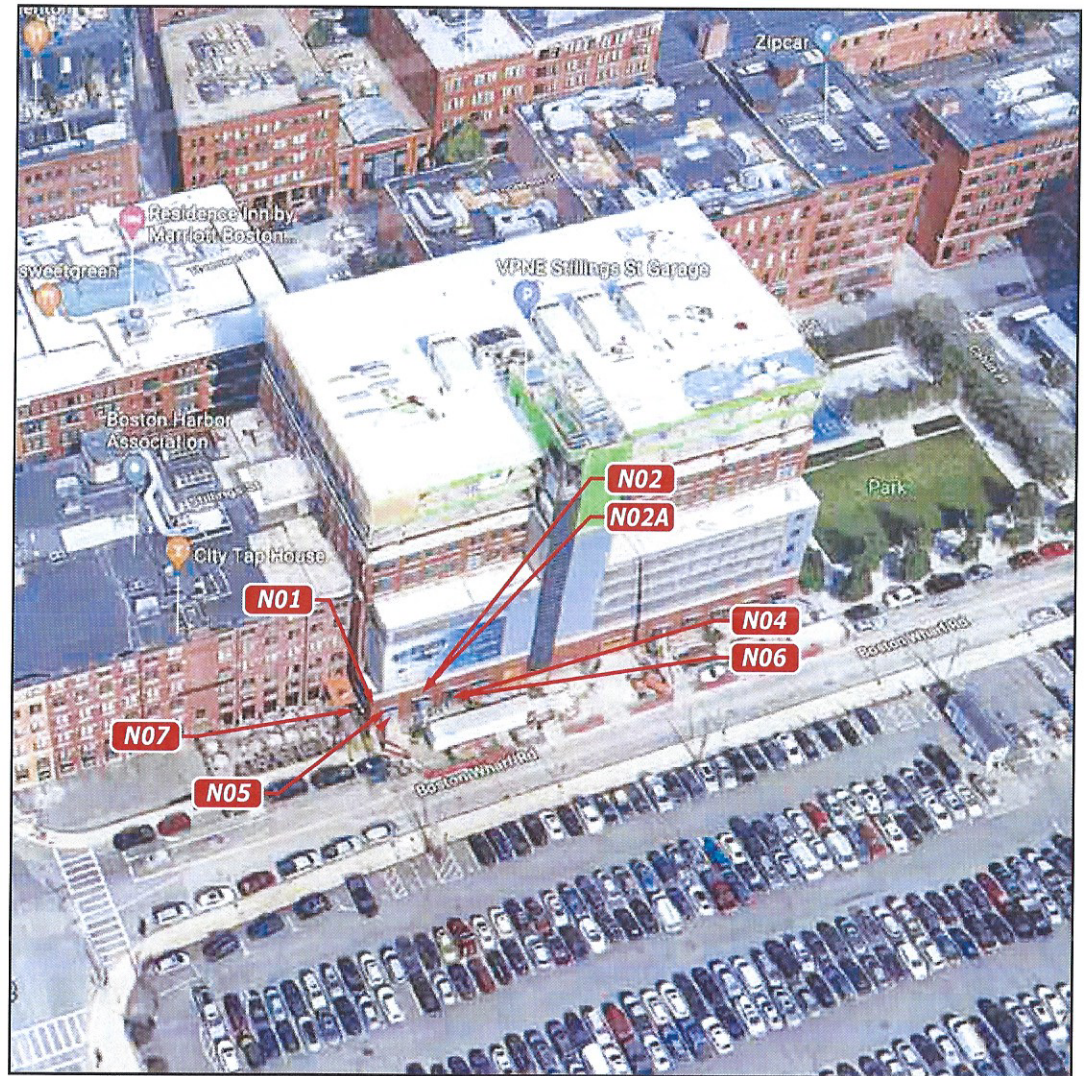



SIGN INVENTORY

SITE:		2004550-2 - Fort Point Seaport
SIGN	PAGE	PROPOSED SIGN
N01	2	CTZ.CUST.FLAG
N02	2	CTZ.CL1.W.12
N02A	2	CTZ.CUST.BKGD
N04	2	DHR-1
N05	2	CTZ.GRN.TRNSM.VIN
N06	2	CTZ.DOOR.HNDL.8
N07	3	CTZ.VIN.CUST



 PHILADELPHIASIGN BRINGING THE WORLD'S BRANDS TO LIFE	TITLE Citizens Bank	DWG BY JHH	DATE 08.06.18	DATE 10.15.18	REVISION Revised as Noted.....	BY BES	THIS IS AN ORIGINAL UNPUBLISHED DRAWING CREATED BY P.S.C.O. IT IS SUBMITTED FOR YOUR PERSONAL USE IN CONJUNCTION WITH A PROJECT BEING PLANNED FOR YOU BY P.S.C.O. IT IS NOT TO BE SHOWN TO ANYONE OUTSIDE YOUR ORGANIZATION NOR IS IT TO BE USED, COPIED, REPRODUCED OR EXHIBITED IN ANY FASHION.
	ADDRESS TBD - Fort Point Seaport 22 Boston Wharf Road Boston, MA 02210	DWG NUM A31755	DATE 09.20.18	REVISION Revised as Noted.....	BY BES		
	SHEET 1	DATE 08.10.18 12.24.19 02.10.20	REVISION Revised as Noted..... Revised as Noted..... Revised as Noted.....	BY JC AFR ZAS ZAS			

- N01 CTZ.CUST.FLAG Custom 24" h Non-Illuminated Fabricated Flag Sign (4 SF)
- NOTE: Small Uplighting Sconce To Be Added For Illumination
- N02 CTZ.CL1.W.12 12" h Halo Lit Channel Ltrs. - 1' 1" oah x 6' 3-3/8" oal (6.80SF)
- N02A CTZ.CUST.BKGD Custom Green Background for White Channel Letters - 30" h x 10' 10-1/4" w
- N04 DHR-2 1st Surface Single Door Vinyl
- NOTE: Door hours to be verified.
- N05 CTZ.GRN.TRNSM.VIN Green Transom Vinyl
- N06 CTZ.DOOR.HNDL.8 Citizens Single Door Handle - 8" h
- NOTE: Handle is Green Square with White Logo

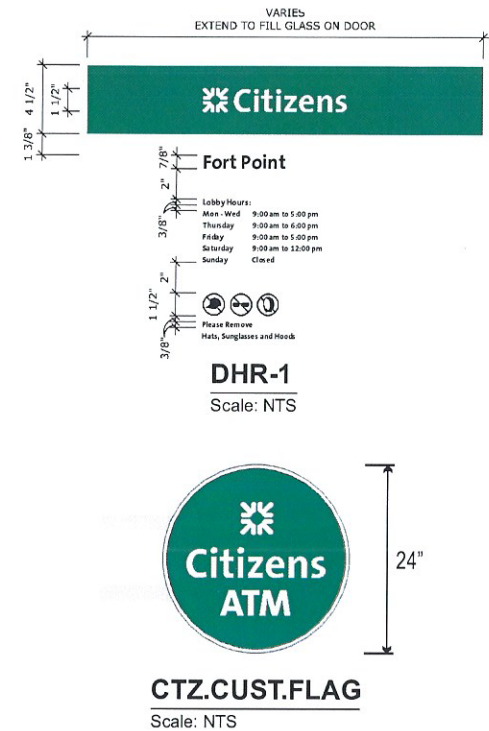
Existing




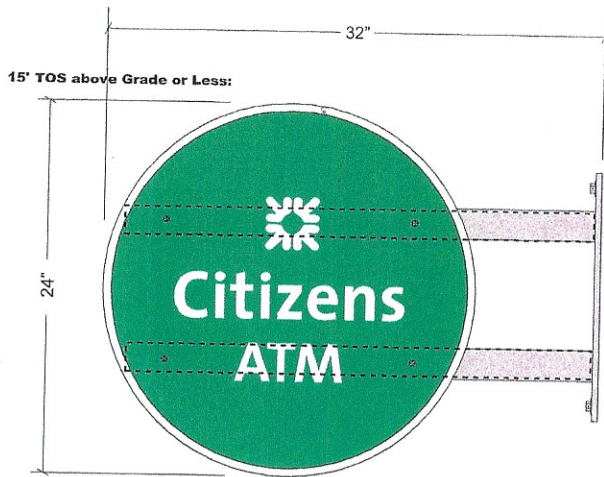
Proposed



Signs Rendered Proportional to the Photo



 PHILADELPHIASIGN BRINGING THE WORLD'S BRANDS TO LIFE	TITLE	Citizens Bank	DWG BY	JHH	DATE	08.06.18	DATE	10.15.18	REVISION	Revised as Noted.....	BES	THIS IS AN ORIGINAL UNPUBLISHED DRAWING CREATED BY P.S.C.O. IT IS SUBMITTED FOR YOUR PERSONAL USE IN CONJUNCTION WITH A PROJECT BEING PLANNED FOR YOU BY P.S.C.O. IT IS NOT TO BE SHOWN TO ANYONE OUTSIDE YOUR ORGANIZATION NOR IS IT TO BE USED, COPIED, REPRODUCED, OR EXHIBITED IN ANY FASHION.		
	ADDRESS	TBD - Fort Point Seaport 22 Boston Wharf Road Boston, MA 02210		DWG NUM	A31755	DATE	09.20.18	REVISION	Revised as Noted.....	BES				
	SHEET	2		DATE	09.12.18	REVISION	Revised as Noted.....	JC	DATE	08.10.18	REVISION		Revised as Noted.....	AFR
					DATE	12.24.19	REVISION	Revised as Noted.....	ZAS	DATE	02.10.20	REVISION	Revised as Noted.....	ZAS



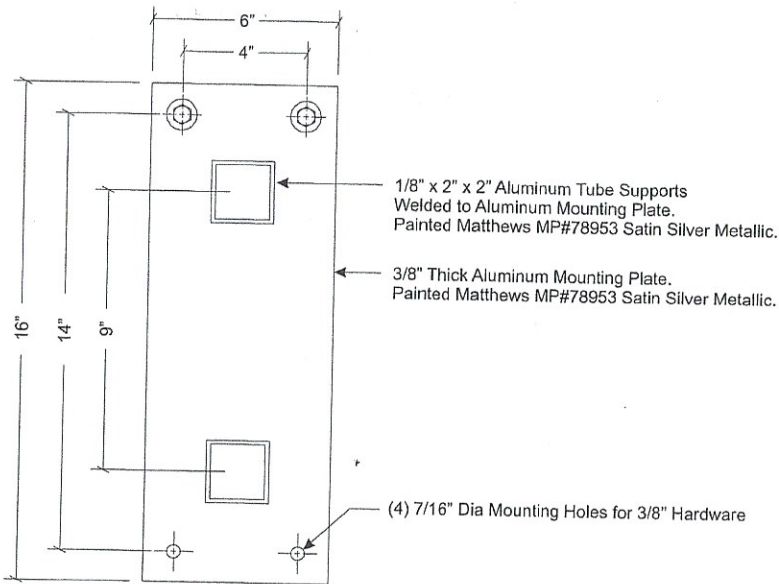
SIGN N01 ELEVATION

Scale: 1 1/2" = 1' 0"



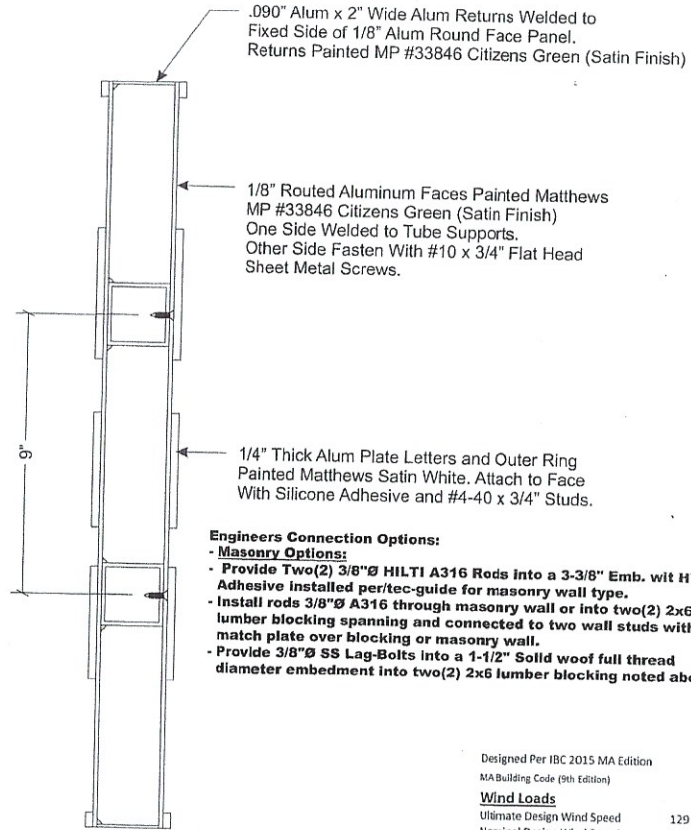
END VIEW

Scale: 1 1/2" = 1' 0"



MOUNTING PLATE DETAIL

Scale: 3" = 1' 0"



SECTION

Scale: 3" = 1' 0"

Engineers Connection Options:

- **Masonry Options:**
- Provide Two(2) 3/8"Ø HILTI A316 Rods into a 3-3/8" Emb. wit HY-270 Adhesive installed per/tec-guide for masonry wall type.
- Install rods 3/8"Ø A316 through masonry wall or into two(2) 2x6 lumber blocking spanning and connected to two wall studs with match plate over blocking or masonry wall.
- Provide 3/8"Ø SS Lag-Bolts into a 1-1/2" Solid wood full thread diameter embedment into two(2) 2x6 lumber blocking noted above.

Designed Per IBC 2015 MA Edition
MA Building Code (9th Edition)

Wind Loads

Ultimate Design Wind Speed	129 mph
Nominal Design Wind Speed	99.9 mph
Risk Cat.	II
(3-Sec Peak Gust MPH*)	
Wind Importance Factor	I = 1
Wind Exposure	C
Gust Factor	0.85

Snow Loads

Ground Snow Load	Pg-	40 psf
Snow Exposure Factor	Ce=	1.0
Snow Load Importance	Is=	1.1
Thermal Factor	Ct=	1.0

Exterior components designed in accordance with applicable provisions of the ASCE 7-10



PHILADELPHIASIGN
BRINGING THE WORLD'S BRANDS TO LIFE

707 West Spring Garden Street
Palmyra, New Jersey 08065

Phone: 856.829.1460
Fax: 856.829.8549
www.philadelphiasign.com

CUSTOMER:

Citizens Bank

JOB NUMBER:

2004550-2

SIGN TYPE:

VARIES

LOCATION:

**22 WHARF RD.
BOSTON, MA 02210**

DATE:

4/27/2018

DRAWN BY:

FT

REVISION:

Number:	Date:	By:
1	2/5/19	DRC

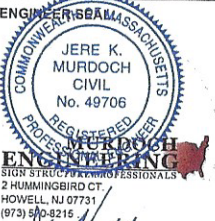
SHEET:

3 of 3

ENG DEPT

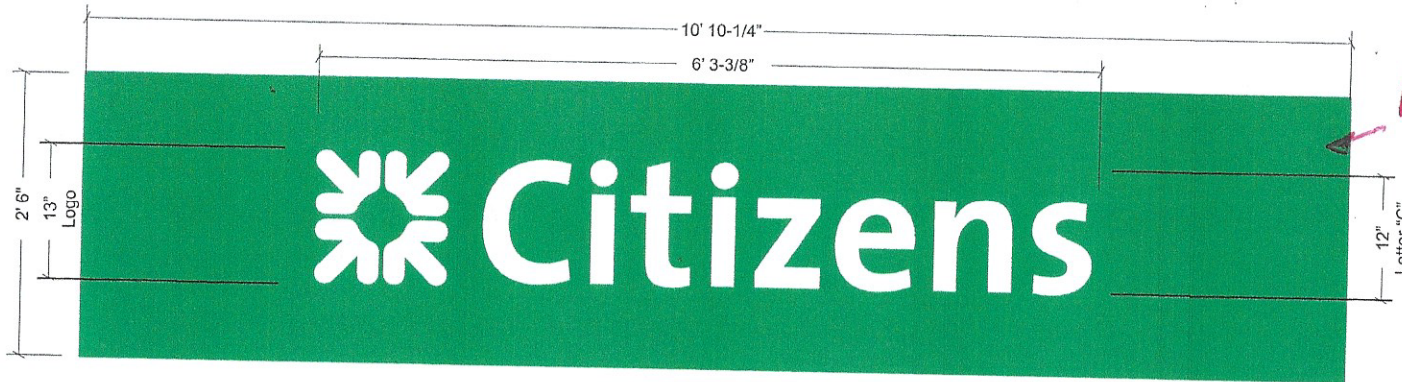
DWG NUMBER:

B78092



Joye Murdoch, PE
Professional Engineer
M/A/PE Lic. #49706
Exp. 6/30/2020
Rev. 3/13/20

THIS IS AN ORIGINAL UNPUBLISHED DRAWING
CREATED BY PSCD. IT IS SUBMITTED FOR YOUR
PERSONAL USE IN CONJUNCTION WITH A PROJECT
BEING PLANNED FOR YOU BY PSCD. IT IS NOT TO
BE SHOWN TO ANYONE OUTSIDE YOUR
ORGANIZATION NOR IS IT TO BE USED, COPIED,
REPRODUCED, OR EXHIBITED IN ANY FASHION.

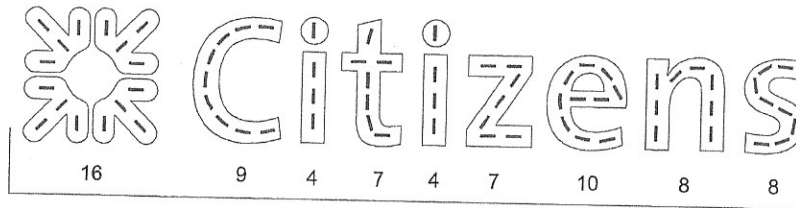


NO2A

SIGN N02 CTZ.CL.CUST

Scale: 1" = 1' 0"

.080" Alum Face with .063" Alum Returns. Welded Construction. Painted Satin White. Cans are OSRC, Populated with LED Modules by PSCO, Mounted to Flat Aluminum Backer Pan



(73) Power Supply #1

BITRO OpticsPRO Plus Led Modules
OTSP-M3PL-DW50

LED LAYOUT

Scale: 1" = 1' 0"

STANDARD LETTER NOTES:

1. Sufficient Primary Circuit In Vicinity Of Sign By Others.
2. Letter To Letter Wiring & Final Primary Hook-up By Sign Installer, Where Allowed By Local Codes.
3. Sign Shall Be U.L. Listed.
4. Mounting Hardware By Sign Installer.
5. Full Size Drilling Template Furnished With Sign.

Electrical Load
(0.0) Amps @ 120 Volts
Electrical Req'mts
(1) 20 Amp/120 Volt Circuits



PHILADELPHIASIGN
BRINGING THE WORLD'S BRANDS TO LIFE

707 West Spring Garden Street
Palmyra, New Jersey 08065

Phone: 856.829.1460
Fax: 856.829.8549
www.philadelphiasign.com

CUSTOMER:

Citizens Bank

JOB NUMBER:

2004550-2

SIGN TYPE:

VARIES

LOCATION:

**22 WHARF RD.
BOSTON, MA 02210**

DATE:

4/27/2018

DRAWN BY:

FT

REVISION:

Number: Date: By:

SHEET:

1 of 3

ENG DEPT

DWG NUMBER:

B78092

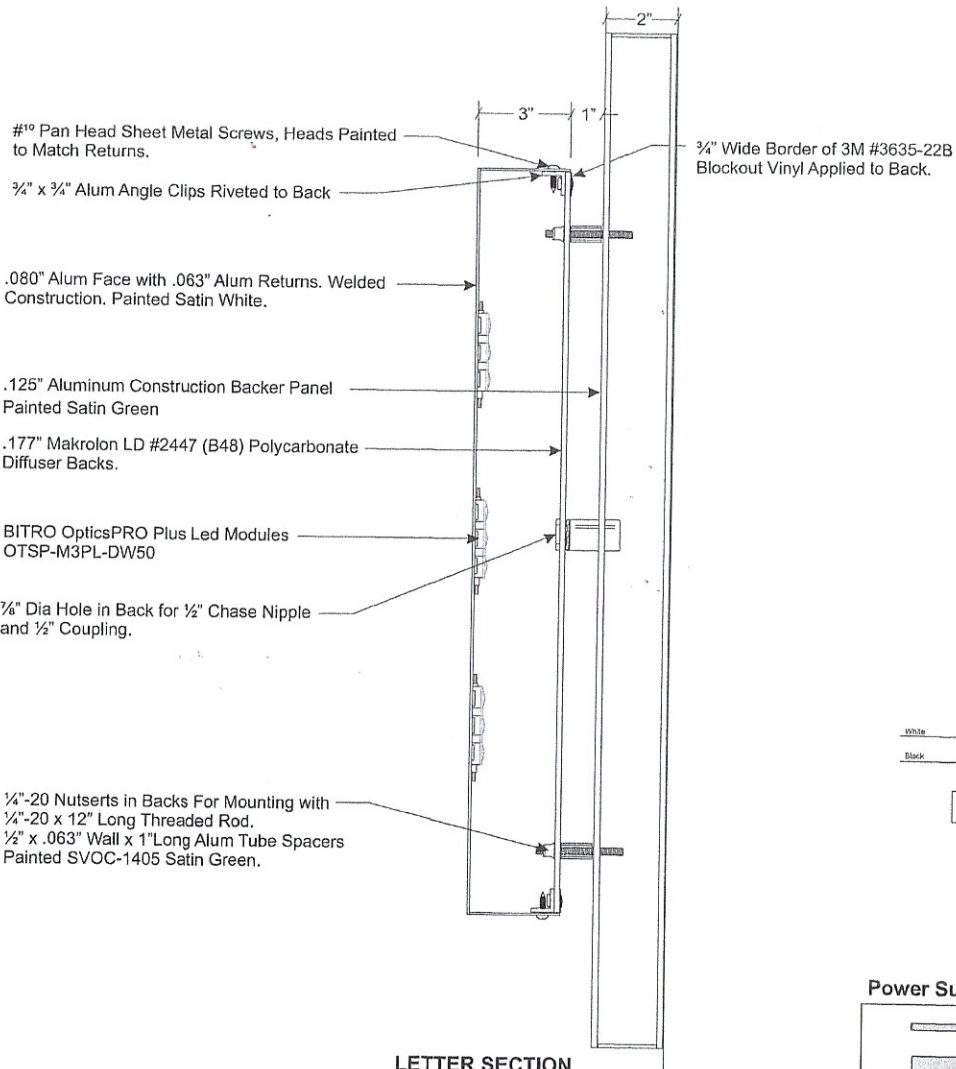
ENGINEER SEAL:



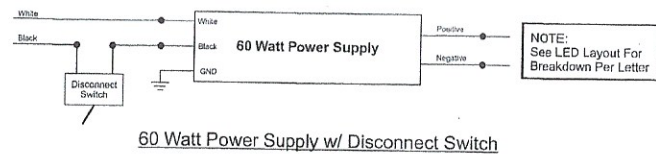
**MAX DESIGN WIND SPEED 90 MPH
EXPOSURE C**

THIS IS AN ORIGINAL UNPUBLISHED DRAWING CREATED BY PSCO. IT IS SUBMITTED FOR YOUR PERSONAL USE IN CONJUNCTION WITH A PROJECT BEING PLANNED FOR YOU BY PSCO. IT IS NOT TO BE SHOWN TO ANYONE OUTSIDE YOUR ORGANIZATION NOR IS IT TO BE USED, COPIED, REPRODUCED, OR EXHIBITED IN ANY FASHION.

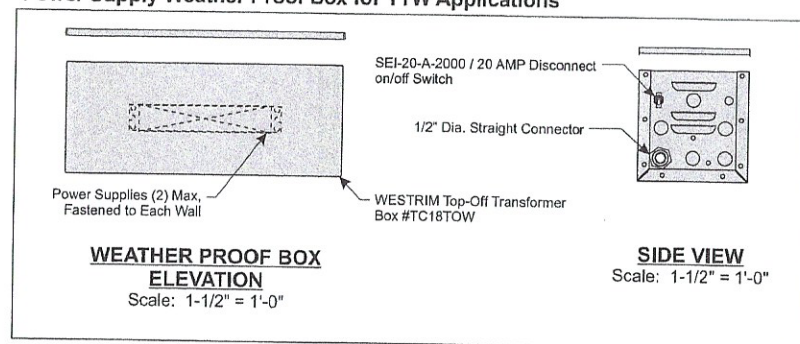
Note: This sign is intended to be installed in accordance with the requirements of Article 600 of the National Electrical Code and/or other applicable local codes. This includes proper grounding and bonding of the sign.



LETTER SECTION
Scale: 3" = 1'-0"



Power Supply Weather Proof Box for TTW Applications



Note: This sign is intended to be installed in accordance with the requirements of Article 600 of the National Electrical Code and/or other applicable local codes. This includes proper grounding and bonding of the sign.



PHILADELPHIASIGN
BRINGING THE WORLD'S BRANDS TO LIFE
707 West Spring Garden Street
Palmyra, New Jersey 08065
Phone: 856.829.1460
Fax: 856.829.8549
www.philadelphiasign.com

CUSTOMER:
Citizens Bank
JOB NUMBER:
2004550-2

SIGN TYPE:
VARIES

LOCATION:
22 WHARF RD.
BOSTON, MA 02210

DATE:
4/27/2018

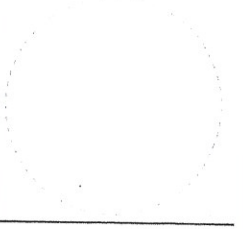
DRAWN BY:
FT

REVISION:
Number: Date: By:

SHEET: 2 of 3
ENG DEPT

DWG NUMBER:
B78092

ENGINEER SEAL:



MAX DESIGN WIND SPEED 90 MPH
EXPOSURE C

THIS IS AN ORIGINAL UNPUBLISHED DRAWING CREATED BY PSCG. IT IS SUBMITTED FOR YOUR PERSONAL USE IN CONJUNCTION WITH A PROJECT BEING PLANNED FOR YOU BY PSCG. IT IS NOT TO BE SHOWN TO ANYONE OUTSIDE YOUR ORGANIZATION NOR IS IT TO BE USED, COPIED, REPRODUCED, OR EXHIBITED IN ANY FASHION.

NO2 + NO2A Installation Detail

N07 CTZ.VIN.CUST Custom Full Window Vinyl - 4' 10"h x 9' 7"w (46.3 sq ft)


Existing



Proposed



Signs Rendered Proportional to the Photo

 PHILADELPHIASIGN BRINGING THE WORLD'S BRANDS TO LIFE	TITLE	Citizens Bank	DWG BY	JHH	DATE	08.06.18	DATE	10.15.18	REVISION	Revised as Noted.....	BY	BES	THIS IS AN ORIGINAL UNPUBLISHED DRAWING CREATED BY P.S.C.O. IT IS SUBMITTED FOR YOUR PERSONAL USE IN CONJUNCTION WITH A PROJECT BEING PLANNED FOR YOU BY P.S.C.O. IT IS NOT TO BE SHOWN TO ANYONE OUTSIDE YOUR ORGANIZATION NOR IS IT TO BE USED, COPIED, REPRODUCED, OR EXHIBITED IN ANY FASHION.
	ADDRESS	TBD - Fort Point Seaport 22 Boston Wharf Road Boston, MA 02210		DWG NUM	A31755	DATE	09.20.18	REVISION	Revised as Noted.....	BY	BES		
	SHEET	3		DATE	08.10.18	REVISION	Revised as Noted.....	BY	AFR				
					DATE	12.24.19	REVISION	Revised as Noted.....	BY	ZAS			
					DATE	02.10.20	REVISION	Revised as Noted.....	BY	ZAS			



PHILADELPHIASIGN

BRINGING THE WORLD'S BRANDS TO LIFE

TITLE	DWG BY	DATE	DATE	REVISION	BY
Citizens Bank	JHH	08.06.18	10.15.18	Revised as Noted.....	BES
ADDRESS TBD - Fort Point Seaport 22 Boston Wharf Road Boston, MA 02210	A31755	SHEET 6	09.20.18	Revised as Noted.....	BES
			09.12.18	Revised as Noted.....	JC
			08.10.18	Revised as Noted.....	AFR
			12.24.19	Revised as Noted.....	ZAS
			02.10.20	Revised as Noted.....	ZAS

THIS IS AN ORIGINAL UNPUBLISHED DRAWING CREATED BY P.S.C.O. IT IS SUBMITTED FOR YOUR PERSONAL USE IN CONJUNCTION WITH A PROJECT BEING PLANNED FOR YOU BY P.S.C.O. IT IS NOT TO BE SHOWN TO ANYONE OUTSIDE YOUR ORGANIZATION NOR IS IT TO BE USED, COPIED, REPRODUCED, OR EXHIBITED IN ANY FASHION.

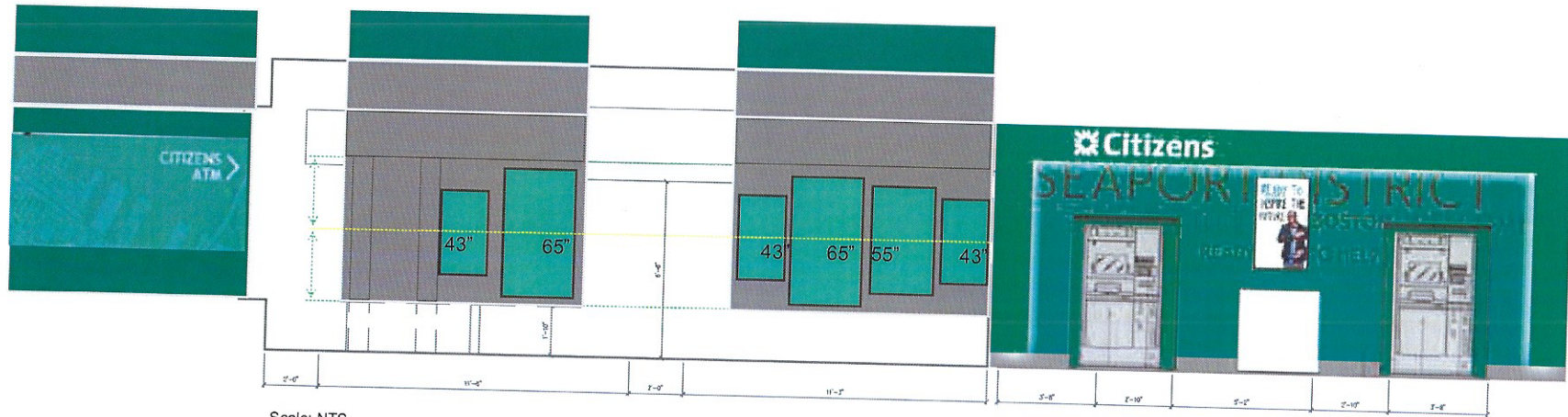
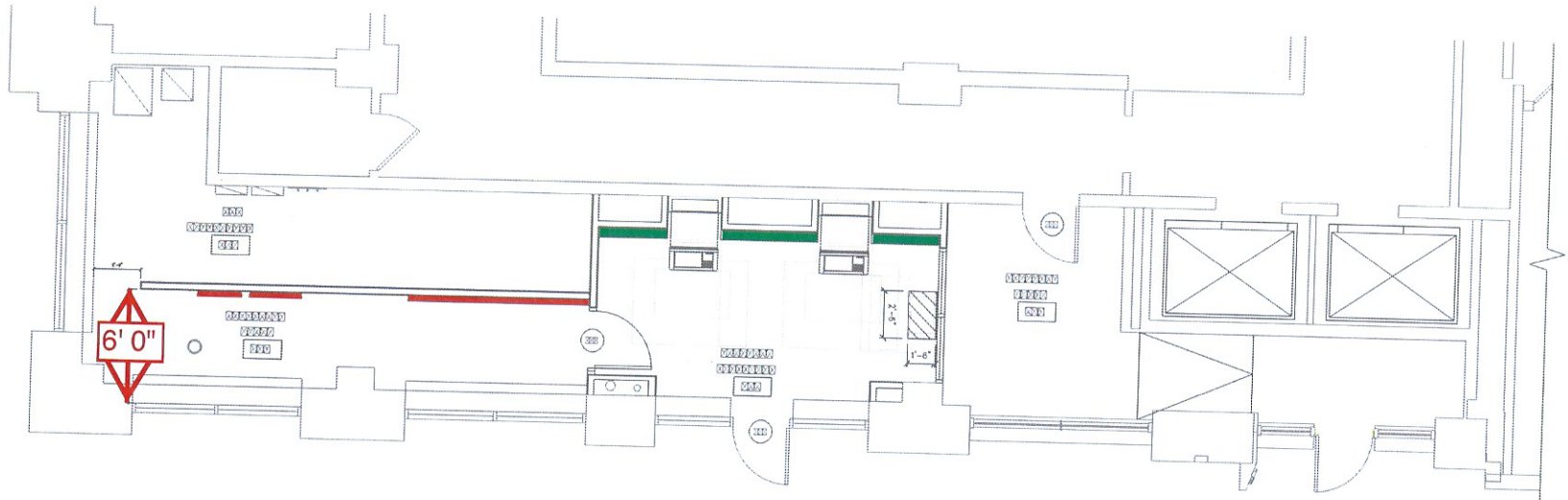


PHILADELPHIASIGN


BRINGING THE WORLD'S BRANDS TO LIFE

TITLE	DWG BY	DATE	DATE	REVISION	BY
Citizens Bank	JHH	08.06.18	10.15.18	Revised as Noted.....	BES
			09.20.18	Revised as Noted.....	BES
TBD - Fort Point Seaport 22 Boston Wharf Road Boston, MA 02210	A31755	7	09.12.18	Revised as Noted.....	JC
			08.10.18	Revised as Noted.....	AFR
			12.24.19	Revised as Noted.....	ZAS
			02.10.20	Revised as Noted.....	ZAS

THIS IS AN ORIGINAL UNPUBLISHED DRAWING CREATED BY P.S.C.O. IT IS SUBMITTED FOR YOUR PERSONAL USE IN CONJUNCTION WITH A PROJECT BEING PLANNED FOR YOU BY P.S.C.O. IT IS NOT TO BE SHOWN TO ANYONE OUTSIDE YOUR ORGANIZATION NOR IS IT TO BE USED, COPIED, REPRODUCED, OR EXHIBITED IN ANY MANNER.



Scale: NTS

 PHILADELPHIASIGN BRINGING THE WORLD'S BRANDS TO LIFE	TITLE	Citizens Bank	DWG BY	JHH	DATE	08.06.18	DATE	10.15.18	REVISION	Revised as Noted.....	BY	BES	THIS IS AN ORIGINAL UNPUBLISHED DRAWING CREATED BY P.S.C.O. IT IS SUBMITTED FOR YOUR PERSONAL USE IN CONNECTION WITH A PROJECT BEING PLANNED FOR YOU BY P.S.C.O. IT IS NOT TO BE SHOWN TO ANYONE OUTSIDE YOUR ORGANIZATION NOR IS IT TO BE USED, COPIED, REPRODUCED, OR EXHIBITED IN ANY FASHION.
	ADDRESS	TBD - Fort Point Seaport 22 Boston Wharf Road Boston, MA 02210		DWG NUM	A31755	DATE	09.20.18	REVISION	Revised as Noted.....	BY	BES		
	SHEET	5		DATE	09.12.18	REVISION	Revised as Noted.....	BY	JC				
DATE	12.24.19		REVISION	Revised as Noted.....	BY	AFR							
DATE	02.10.20		REVISION	Revised as Noted.....	BY	ZAS							




PHILADELPHIASIGN

BRINGING THE WORLD'S BRANDS TO LIFE

TITLE	Citizens Bank	DWG BY	JHH	DATE	08.06.18	DATE	REVISION	BY	THIS IS AN ORIGINAL UNPUBLISHED DRAWING CREATED BY P.S.C.O. IT IS SUBMITTED FOR YOUR PERSONAL USE IN CONJUNCTION WITH A PROJECT BEING PLANNED FOR YOU BY P.S.C.O. IT IS NOT TO BE SHOWN TO ANYONE OUTSIDE YOUR ORGANIZATION NOR IS IT TO BE USED, COPIED, REPRODUCED, OR EXHIBITED IN ANY FASHION.
ADDRESS	TBD - Fort Point Seaport 22 Boston Wharf Road Boston, MA 02210	DWG NUM	A31755	DATE	10.15.18	Revised as Noted	BES	BES	
		SHEET	8	DATE	09.20.18	Revised as Noted	BES	BES	
				DATE	09.12.18	Revised as Noted	JC	JC	
				DATE	08.10.18	Revised as Noted	AFR	AFR	
				DATE	12.24.19	Revised as Noted	ZAS	ZAS	
				DATE	02.10.20	Revised as Noted	ZAS	ZAS	



 PHILADELPHIASIGN BRINGING THE WORLD'S BRANDS TO LIFE	TITLE	DWG BY	DATE	DATE	REVISION	BY	THIS IS AN ORIGINAL UNPUBLISHED DRAWING CREATED BY P.S.C.O. IT IS SUBMITTED FOR YOUR PERSONAL USE IN CONNECTION WITH A PROJECT BEING PLANNED FOR YOU BY P.S.C.O. IT IS NOT TO BE SHOWN TO ANYONE OUTSIDE YOUR ORGANIZATION NOR IS IT TO BE USED, COPIED, REPRODUCED OR EXHIBITED IN ANY FASHION.
	Citizens Bank ADDRESS TBD - Fort Point Seaport 22 Boston Wharf Road Boston, MA 02210	JHH	08.06.18	10.15.18	Revised as Noted.....	BES	
			09.20.18	Revised as Noted.....	BES		
			09.12.18	Revised as Noted.....	JC		
			08.10.18	Revised as Noted.....	AFR		
			12.24.19	Revised as Noted.....	ZAS		
			02.10.20	Revised as Noted.....	ZAS		

Video Display Specifications

Diagonal Size	55
Type	Edge LED BLU
Resolution	3840*2160 (4K UHD)
Pixel Pitch(mm)	0.105 x 0.315
Active Display Area(mm)	1209.6(H) x 680.4(V)
Brightness(Typ.)	500 nit
Contrast Ratio	4000:01:00
Viewing Angle(H/V)	178/178
Response Time(G-to-G)	8ms(Typ.)
Display Colors	16.7M(True Display) 1.07B(Ditherd 10bit)
Color Gamut	92% (DCI-P3, CIE 1976)
Operation Hour	24/7
Haze	25%

Display

Dynamic C/R	MEGA
H-Scanning Frequency	30 ~ 81kHz
V-Scanning Frequency	48 ~ 75Hz
Maximum Pixel Frequency	594MHz

Sound

Speaker Type	Built in Speaker(10W + 10W)
--------------	-----------------------------

Connectivity

Input	
RGB	DVI-D, Display Port 1.2 (1)
Video	HDMI 2.0 (2)
HDCP	HDCP2.2
Audio	Stereo mini Jack, DVI, HDMI
Usb	USB 2.0 x 2
Output	
RGB	HDMI 2.0 (Loop-out)
Audio	Stereo mini Jack
External Control	RS232C(in/out) thru stereo jack, RJ45
External Sensor	IR

Power

Type	Internal
Power Supply	AC 100 - 240 V~ (+/- 10%), 50/60 Hz
Power Consumption	
Max[W/h]	143
Typical[W/h]	108
Rating[W/h]	130
BTU(Max)	487.6
Sleep mode	0.5

Mechanical Specification

Dimension (mm)	Set	1235.1 x 707.9 x 46.3
	Package	1402 x 858 x 163
Weight (kg)	Set	18.1
	Package	23.6
VESA Mount (mm)		200 X 200
Protection Glass		N/A
Stand Type		Foot Stand (Optional)
Media Player Option Type		N/A
Bezel Width (mm)		9.2mm(U/L/R), 11.2mm(B)

Operation

Operating Temperature	10 °C ~ 40 °C	Humidity	10 % ~ 80 %
-----------------------	---------------	----------	-------------

Feature

Key Features		UHD Signage Display Slim & Light Signage with Built-in MagicInfo S6, SSSP 6.0
Special Features		H/W: Temperature Sensor, Pivot Display, Clock Battery(168hrs Clock Keeping), Built in Speaker(10W 2ch), Video Wall Daisy Chain(HDCP2.2:4EA,HDCP1.4:7EA), IP5x, Wi-Fi/BT S/W: Auto Source Switching & Recovery, LFD Home UI, Button Lock, Hot key option, Plug&Play (Initial Setting)
Internal Player	Processor	Coretex A72 1.7GHz Quad-Core CPU
	On-Chip Cache Memory	L1 Instruction Cache : 48KB L1 Data Cache : 32KB L2 Cache : 2MB
	Clock Speed	1.7GHz
	Main Memory Interface	2.5GB LPDDR4 1.5GHz 64bit
	Graphics	Graphic resolution : 1920x1080 Output resolution : 3840x2160 (Scale up from graphic processing result.)
	Storage (FDM)	8GB (3.88GB Occupied by O/S, 4.12GB Available)
	Multimedia	*Video Decoder : MPEG-1/2/4, H.263, H.264/AVC, UHD H.264/AVC, VC-1, AVS+, HEVC, JPEG, PNG, VP8, VP9 *Audio Decoder : AC3 (DD), MPEG
	IO Ports	USB 2.0
Operating System		Tizen 4.0 (VDLinux)

Certification

Safety	60950-1
EMC	Class B
Security	N/A

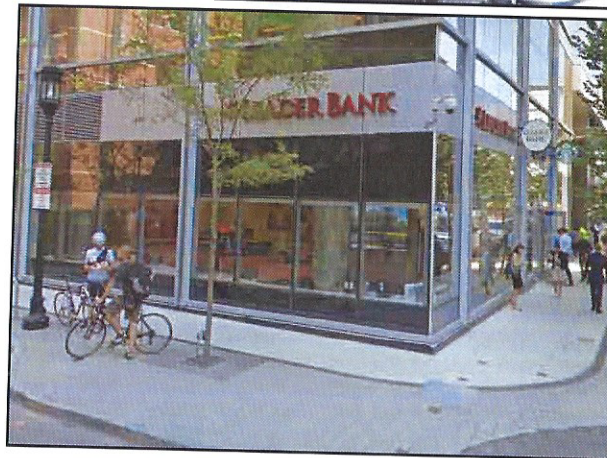
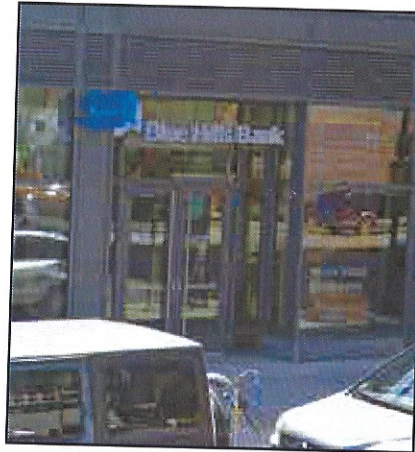
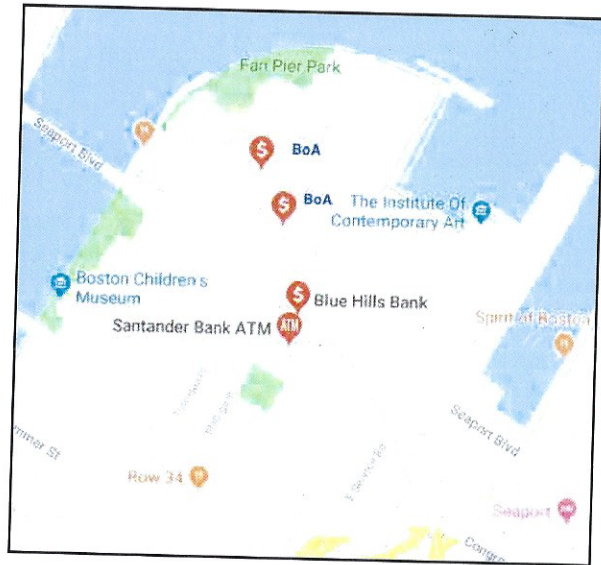
Accessory


Included		Quick Setup Guide, Warranty Card, Power Cord, Remote Controller, Batteries
Optional	Stand	STN-L4355F
	Mount	WMN4070SE
	Specialty	CML400XK
	Tray	N/A

Media Player

Media Player	N/A
--------------	-----

Competition



 PHILADELPHIASIGN BRINGING THE WORLD'S BRANDS TO LIFE	TITLE	Citizens Bank	DWG BY	JHH	DATE	08.06.18	DATE	REVISION	BY	THIS IS AN ORIGINAL UNPUBLISHED DRAWING CREATED BY P.S.C.O. IT IS SUBMITTED FOR YOUR PERSONAL USE IN CONJUNCTION WITH A PROJECT BEING PLANNED FOR YOU BY P.S.C.O. IT IS NOT TO BE SHOWN TO ANYONE OUTSIDE YOUR ORGANIZATION NOR IS IT TO BE USED, COPIED, REPRODUCED, OR EXHIBITED IN ANY FASHION.
	ADDRESS	TBD - Fort Point Seaport 22 Boston Wharf Road Boston, MA 02210		DWG NUM	A31755	DATE	REVISION	BY		
		SHEET	4	DATE	REVISION	BY				
				10.15.18	Revised as Noted.....	BES				
				09.20.18	Revised as Noted.....	BES				
				09.12.18	Revised as Noted.....	JC				
				08.10.18	Revised as Noted.....	AFR				
				12.24.19	Revised as Noted.....	ZAS				
				02.10.20	Revised as Noted.....	ZAS				