

**Satellite view of TPC “campus”
Sanctuary at 1859 Centre St.
Parish Hall at 70 Corey St.
and Henshaw Terrace (dead-end private way)**

PV System Layout



PV Array - 48 modules, total of 15.1 kW DC (see Array Layout for details)

One 240V, 1-Phase Inverter, 10 kW AC Total (in Basement)

PV system AC disconnect switch (outside ground level, 24/7 accessible and lockable)

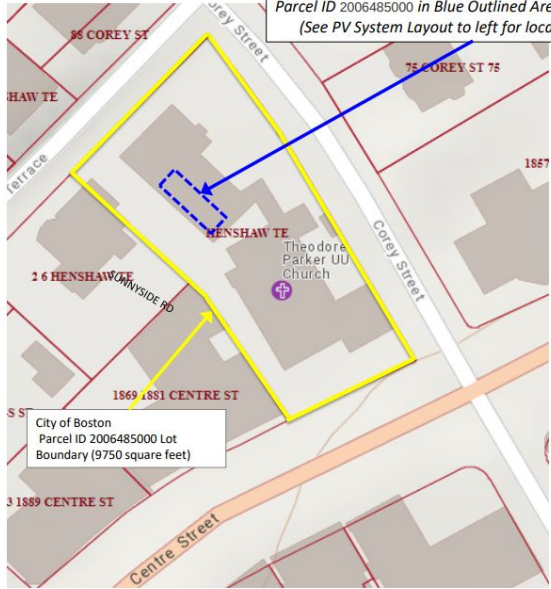
New utility furnished SMART production revenue meter (building exterior, adjacent to AC Disconnect)

-200 Amp Service Panel
-Point of Interconnection-Line Side Tap before Main Breaker (basement)

Existing utility revenue meter 11007789 (in Basement)



Site Plan



Location of Proposed Distributed Generation System on Parcel ID 2006485000 in Blue Outlined Area (See PV System Layout to left for location details)

City of Boston
Parcel ID 2006485000 Lot Boundary (9750 square feet)

621 Energy LLC

152 COMMONWEALTH AVENUE
CONCORD, MA 01742
(978) 263-5215
WWW.621ENERGY.COM

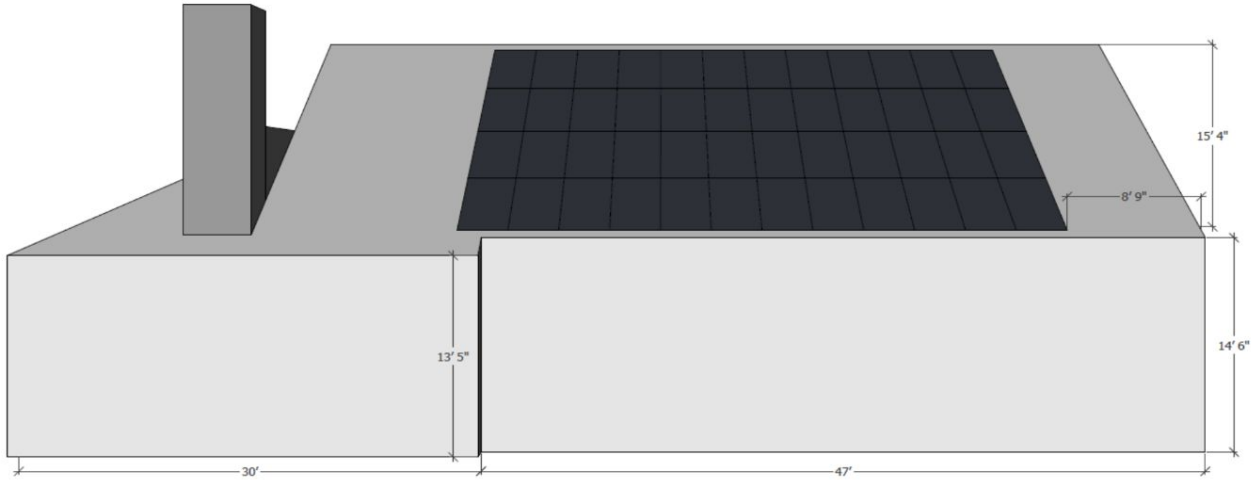
PROJECT NAME
THEODORE PARKER UNITARIAN CHURCH
1859 CENTRE STREET, WEST ROXBURY 02132
15.12 kW (DC)/10 kW (AC) PV SYSTEM

DRAWING TITLE
SITE PLAN

PROJ #	REV #
2001	0
DATE	
2/29/2020	

PV1

For purposes of installing PV Array by 621 Energy, dimensions +/- one inch



621 Energy LLC

152 COMMONWEALTH AVENUE
CONCORD, MA 01742
(978) 263-5215
WWW.621ENERGY.COM

PROJECT NAME
THEODORE PARKER UNITARIAN CHURCH
1859 CENTRE STREET, WEST ROXBURY 02132
15.12 kW (DC)/10 kW (AC) PV SYSTEM

DRAWING TITLE
PARISH HALL WEST ELEVATIONS

PROJ #	REV #
2001	0
DATE	
3/2/2020	

PV1A



**Sanctuary building at 1859 Centre
Showing alleyway between Chase and TPC**



**Current condition: alleyway from 1859 Centre St.
sidewalk**



Mock-up view: alleyway from 1859 Centre St. sidewalk showing meter and cutoff switch location and solar panels on Parish Hall roof



View of rear of Parish Hall (70 Corey St.) roof from Henshaw Terrace with mock-up of solar panels



**Parish Hall (70 Corey St.) roof from backyard
with mock-up of solar panels and conduit**





FITNESS R