

sandwiches

CHIPOTLE

16 5/8" H x 5 7/8" W x 3" D

SLIM LINE TELEPHONE ACCESS SYSTEMS



[TX3] Series

TELEPHONE/CARD ACCESS SYSTEMS

Features

- TCP/IP capability for remote programming by adding a TX3-IP module
- Stainless steel front panel
- Universal Series slim line enclosure with built-in rain hood
- Scrolling 4 x 20 backlit LCD display that eliminates the need for an external directory
- Available in 200, 1000 and 2000 name capacities
- Backlit 16 digit keypad with dedicated operational buttons for Page Up, Page Down, Call and Info
- Provision for postal lock or card reader (TX3-P300-HA card reader sold separately)
- Multi-lingual Display and Voice Greeting (English, French-Canadian and Spanish) that provides instructions on how to use entry panel
- Concierge/Security Desk/Guard Phone capability
- Supports both AutoDialer (ADC) and NSL (No phone bill)
- Ability to network panels together (peer-to-peer)
- Dials up to 18 digit telephone numbers
- System can be configured locally using the keypad or a computer with the TX3 configuration software
- Upload/download configuration files without taking the whole system offline
- Remote programming requires a computer equipped with a modem and a TX3-MDM modem module installed in the lobby unit
- Programmable daily usage postal lock
- 5000 record event log
- Provision for a covert color camera; CAM-3

Applications

- Provides resident/visitor access control for small buildings such as condominiums, apartment buildings, office buildings, gated communities and industrial buildings with up to 2000 residents or users
- Slim design is ideal for applications with limited space, or for applications where a separate directory exists or is not required
- Surface, semi-flush or pedestal mounting options (Optional adapter plate required to mount to a standard gooseneck post)

Description

Mircom's TX3 Slim Line Telephone Access Systems are designed to provide primary resident/visitor access control for small condominiums, apartment buildings, office buildings, gated communities and industrial buildings with up to 2000 residents or users. The slim design is ideal for applications with limited space, or for applications where a separate directory exists or is not required.

The Universal Series enclosure is constructed of a heavy gauge stainless steel and can be used in a lobby or outdoors. Surface, semi-flush or pedestal mount applications are supported. The Universal Series enclosure features a built-in rain hood, microphone, tamper resistant speaker and has provisions for a postal lock and color camera to be installed.

The TX3 Slim Line systems feature a back-lit 4 line by 20 character electronic LCD display that scrolls a programmable banner message as well as the resident names and dial codes. The system also features a 16 digit backlit telephone style keypad with dedicated operational buttons for Page Up, Page Down, Call and Info. In addition, the system features a configurable multilingual display and voice prompts with a choice of English, Spanish, or French-Canadian.

The systems are programmable via the built-in keypad or using a computer with the optional TX3 configuration software. In addition the systems can also be configured remotely using the TX3 configuration software and the TX3-MDM Modem Module.

CATALOG NUMBER 6557

NOT TO BE USED FOR INSTALLATION PURPOSES.

Mircom reserves the right to make changes at any time without notice in prices, colours, materials, components, equipment, specifications and models and also to discontinue models.

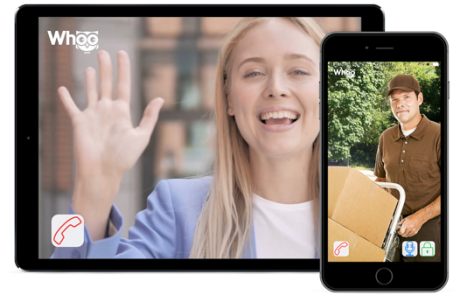


Whoo.ai Mobile Video Intercom

The smarter, safer, better way to access your front door.

Physical & Power

- Size: 324x130x27mm (HxWxD)
- Body material: Aluminum
- RAM / ROM: 2GB / 16GB
- Display: 7" IPS LCD
- Screen: 7" capacitive touch screen
- Camera: 3 Mega pixels, automatic lighting
- Relay In/Out: 3/3
- Installation: On-wall or In-wall
- Water-proof & Dust-proof: IP65



Video

- Resolution: up to 1080p
- Maximum image transfer rate: 1080p - 30fps
- High intensity LEDs for picture lighting during dark hours

Networking


- 10/100 Mbps Ethernet connection
- DHCP Client or Static IP
- Network-Time-Protocol

Door Entry Feature

- Internal DPDT relay for controlling a door opener
- Relays controlled individually by DTMF tones or messages
- Camera permanently operational, not just during calls
- White balance: auto
- Viewing angle: 120 °
- Minimum illumination: 1LUX (without LED illumination)

Primary Contact:

 arturo@whoo.ai

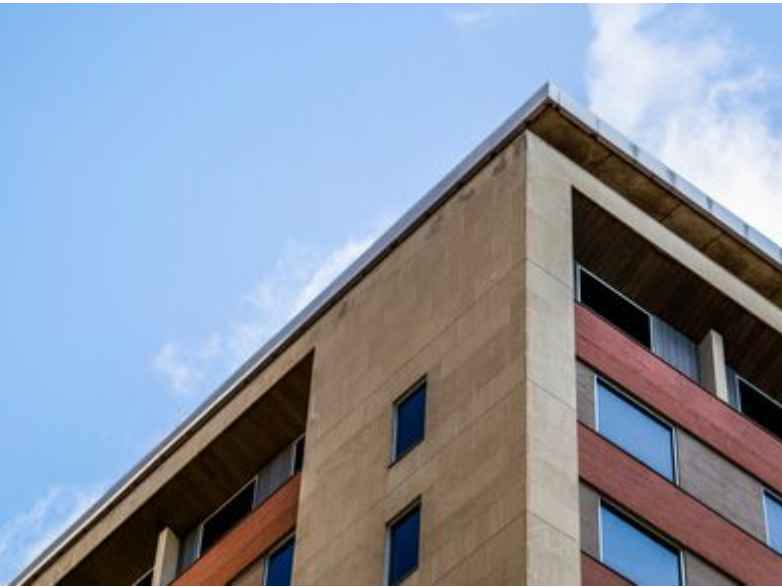
 646.228.6341





Whoo.ai Mobile Intercom

The smarter, safer, better way to access your front door.



Improve tenant experience and increase your property value

Bring your building into the 21st century with the kind of smart technology that renters want and expect. Whoo.ai Mobile Intercom provides a secure, convenient and seamless tenant experience that will match their tech-driven lives.



Verify visitors in real time

Seamless and clear video connection to visitors from any number of entrances.

Works just as well for buildings with 4 or 400 apartments.



Update building information

Management tool to easily edit, update and manage tenant information remotely.

Over the air updates and upgrades.



Access control from anywhere

Keyless entry for residents, and single entry codes for expected guests.

Access codes for delivery services.

Affordable and Easy to Install

- \$1999 hardware
- \$2.50 monthly subscription fee per apartment*
- No need to rewire your building
- Up and running in less than a day

*with a 36 month contract



www.whoo.ai | info@whoo.ai