

OPTION B - 2 SOLID PANELS

OPTION A - 1 SOLID PANEL



30 MELCHER OPTION 'A' - WITHOUT RAILINGS



30 MELCHER OPTION 'A' - WITH RAILINGS



30 MELCHER OPTION 'B' - WITH RAILINGS



30 MELCHER OPTION 'B' - WITHOUT RAILINGS



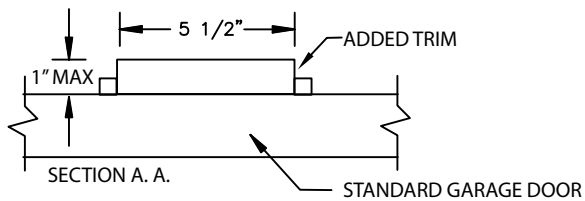
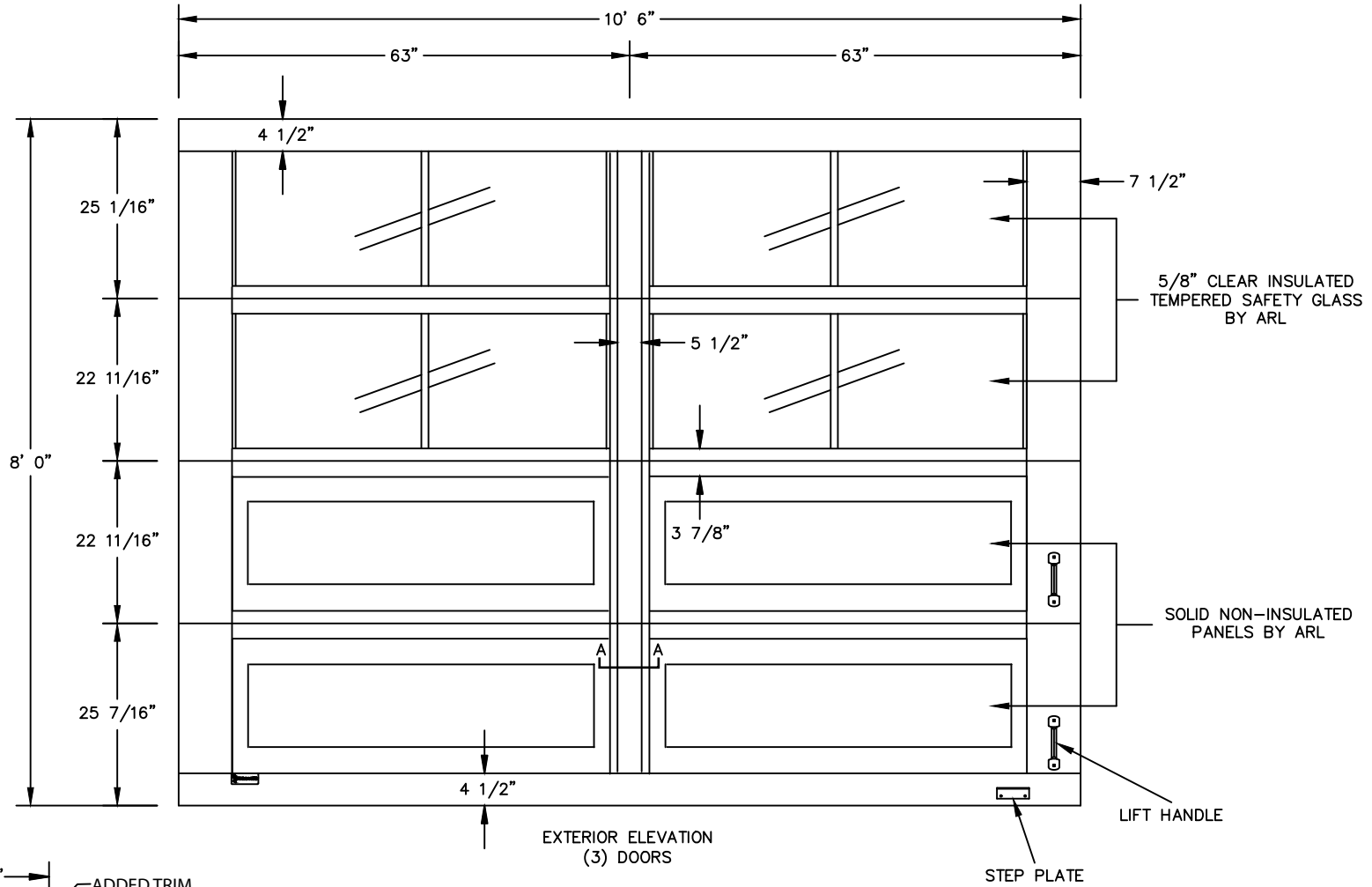
40 MELCHER - WITHOUT RAILINGS



40 MELCHER - WITH RAILINGS

NOTE: FOR SAFETY REASONS DASMA REQUIRES ALL OVERHEAD DOORS TO HAVE EXTERIOR LIFT HANDLES AND STEP PLATES.

PLEASE NOTE: TEMPERED GLASS IS SUBJECT TO "ROLLER WAVE DISTORTION" THIS CONDITION IS NOT CONSIDERED A DEFECT WITH GLAZING MANUFACTURING
 NOTE: NO LOGO WILL BE VISIBLE ON SAFETY GLASS. LOGO IS AVAILABLE WITH WRITTEN REQUEST ONLY



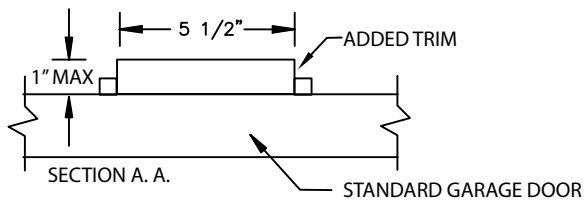
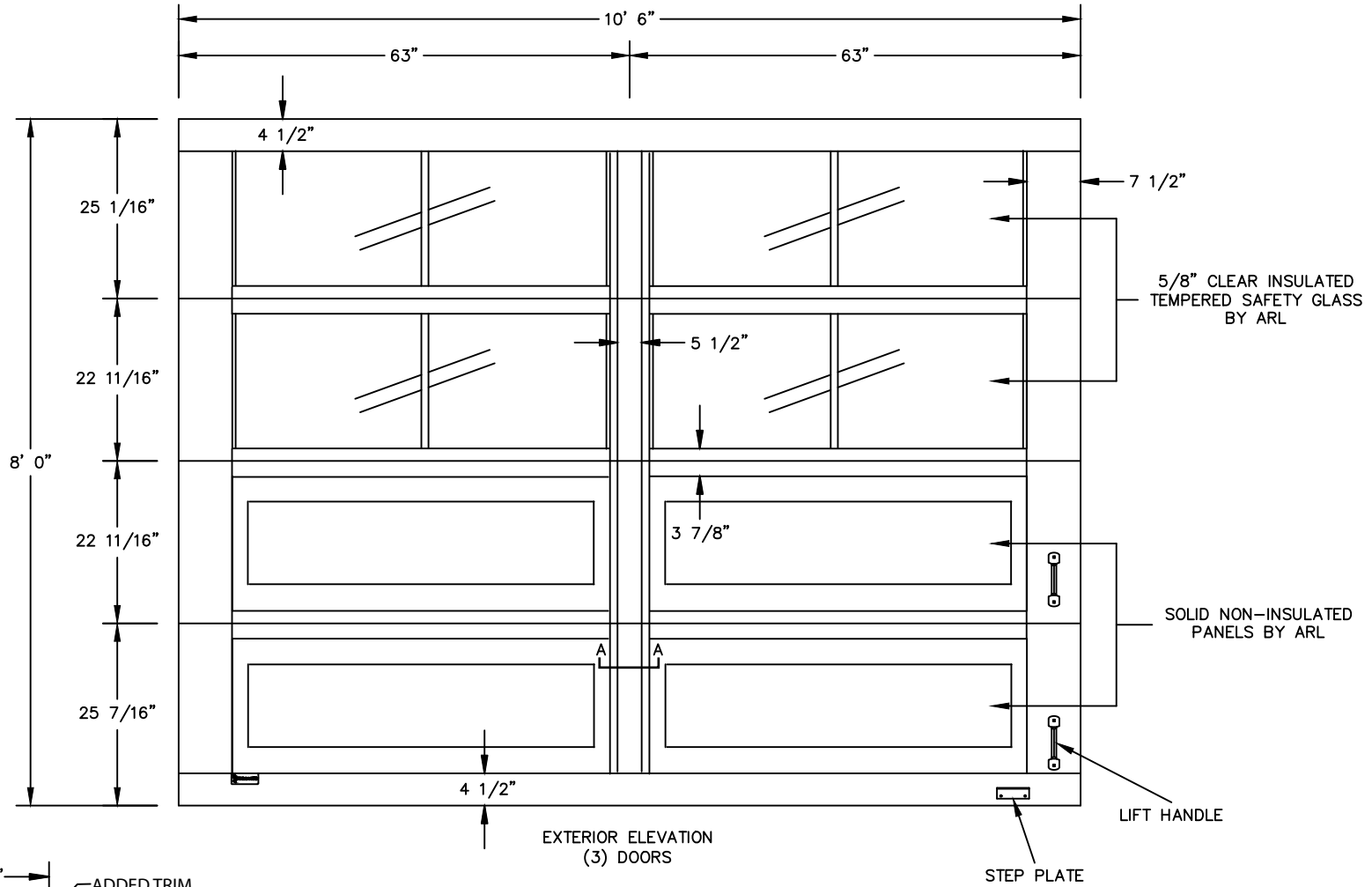
NOTE: LIFT HANDLES AND STEP PLATES SUPPLIED LOOSE FOR FIELD INSTALLATION

SHOP DRAWINGS APPROVED BY: _____
 PLEASE SIGN AND DATE EACH PAGE OF THE SHOP DRAWINGS FOR APPROVAL



NOTE: FOR SAFETY REASONS DASMA REQUIRES ALL OVERHEAD DOORS TO HAVE EXTERIOR LIFT HANDLES AND STEP PLATES.

PLEASE NOTE: TEMPERED GLASS IS SUBJECT TO "ROLLER WAVE DISTORTION" THIS CONDITION IS NOT CONSIDERED A DEFECT WITH GLAZING MANUFACTURING
 NOTE: NO LOGO WILL BE VISIBLE ON SAFETY GLASS. LOGO IS AVAILABLE WITH WRITTEN REQUEST ONLY



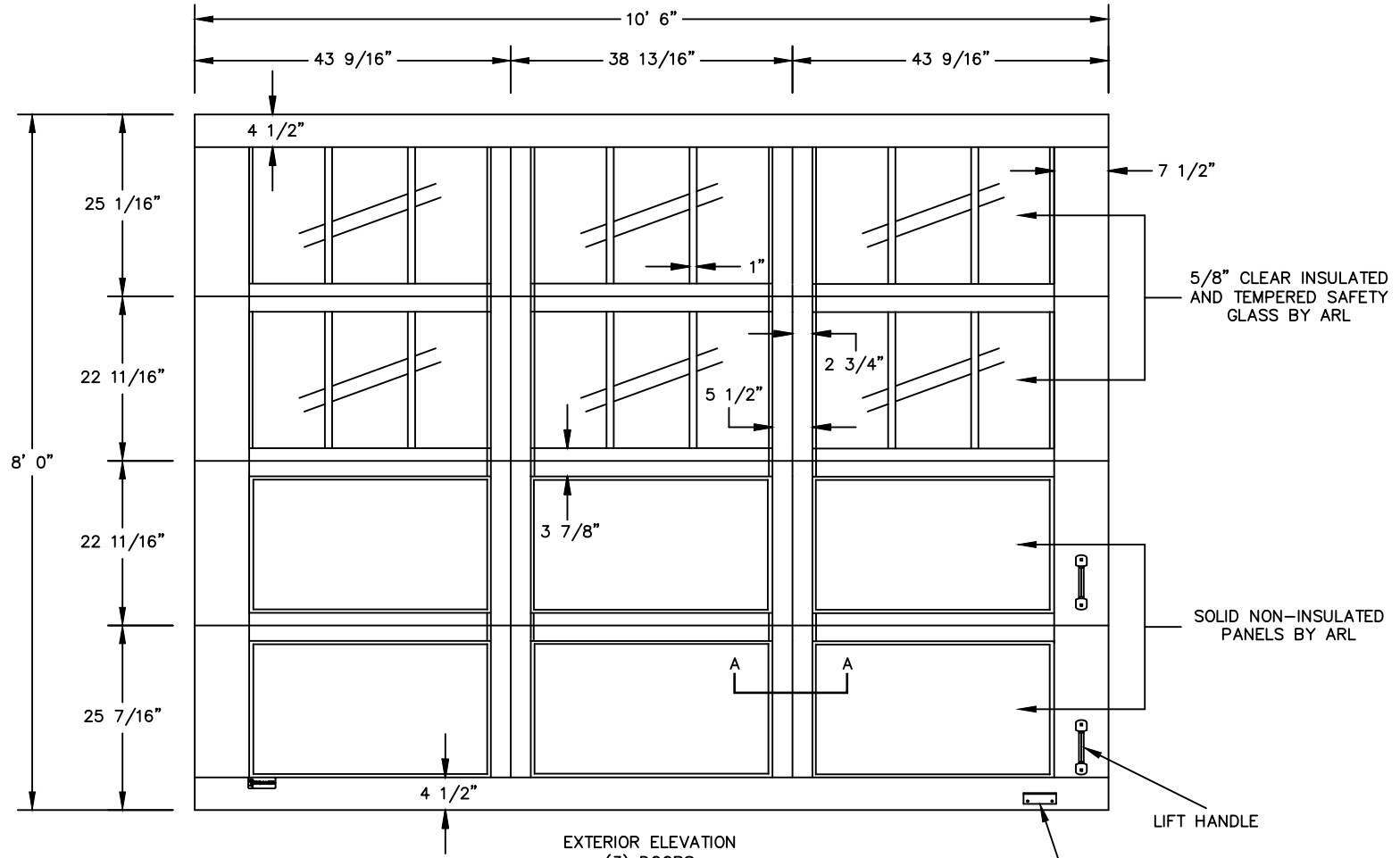
NOTE: LIFT HANDLES AND STEP PLATES SUPPLIED LOOSE FOR FIELD INSTALLATION

SHOP DRAWINGS APPROVED BY: _____
 PLEASE SIGN AND DATE EACH PAGE OF THE SHOP DRAWINGS FOR APPROVAL



NOTE: FOR SAFETY REASONS DASMA REQUIRES ALL OVERHEAD DOORS TO HAVE EXTERIOR LIFT HANDLES AND STEP PLATES.

PLEASE NOTE: TEMPERED GLASS IS SUBJECT TO "ROLLER WAVE DISTORTION" THIS CONDITION IS NOT CONSIDERED A DEFECT WITH GLAZING MANUFACTURING
 NOTE: NO LOGO WILL BE VISIBLE ON SAFETY GLASS. LOGO IS AVAILABLE WITH WRITTEN REQUEST ONLY

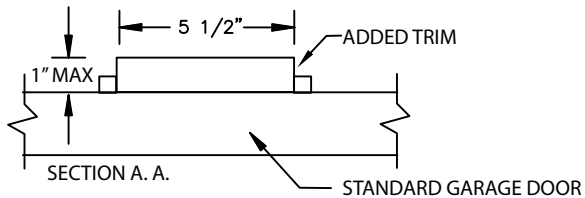


EXTERIOR ELEVATION
(3) DOORS

STEP PLATE

LIFT HANDLE

NOTE: LIFT HANDLES AND STEP PLATES SUPPLIED LOOSE FOR FIELD INSTALLATION

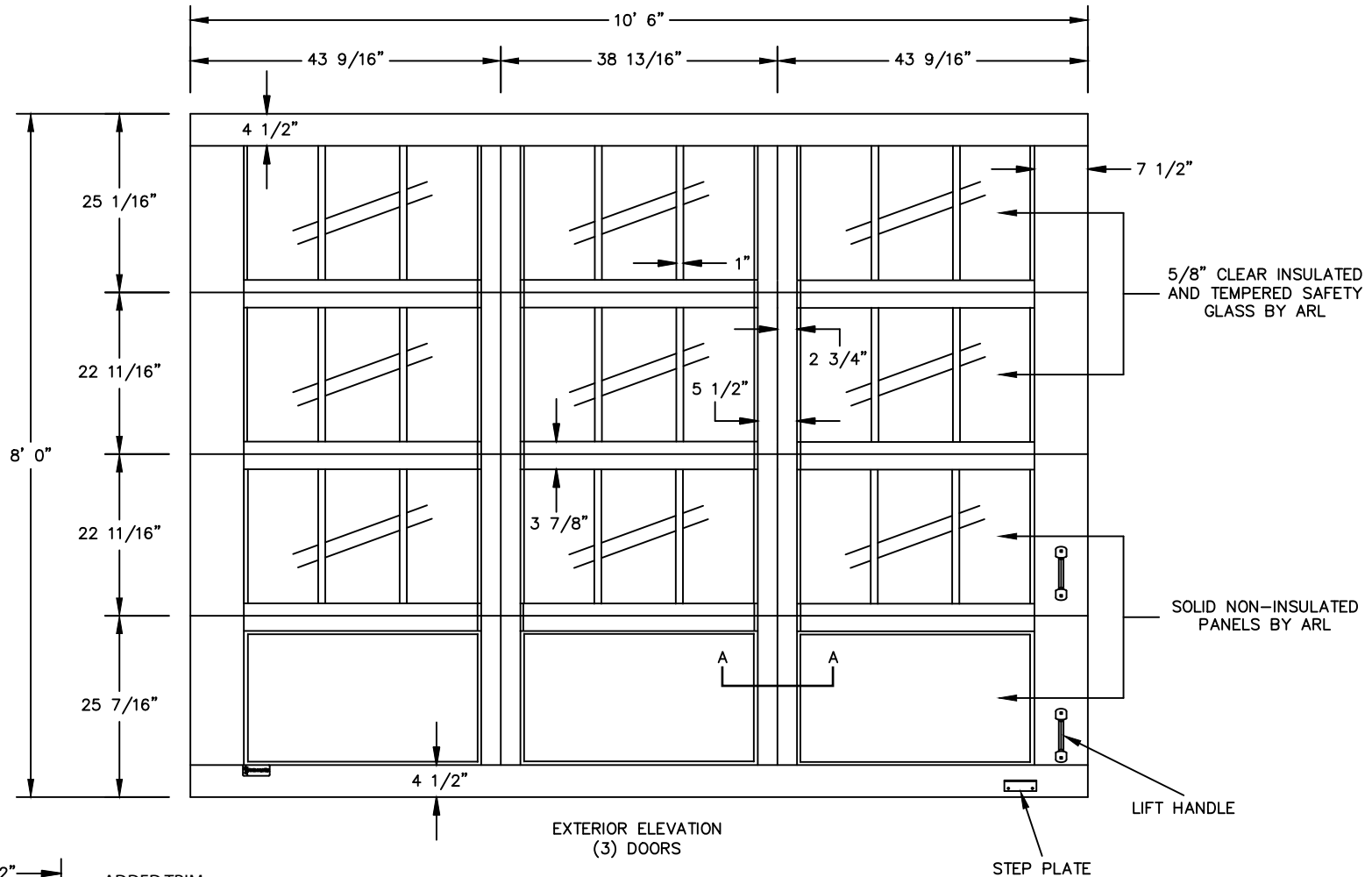


SHOP DRAWINGS APPROVED BY: _____
 PLEASE SIGN AND DATE EACH PAGE OF THE SHOP DRAWINGS FOR APPROVAL



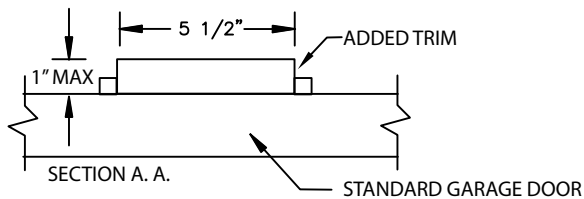
NOTE: FOR SAFETY REASONS DASMA REQUIRES ALL OVERHEAD DOORS TO HAVE EXTERIOR LIFT HANDLES AND STEP PLATES.

PLEASE NOTE: TEMPERED GLASS IS SUBJECT TO "ROLLER WAVE DISTORTION" THIS CONDITION IS NOT CONSIDERED A DEFECT WITH GLAZING MANUFACTURING
 NOTE: NO LOGO WILL BE VISIBLE ON SAFETY GLASS. LOGO IS AVAILABLE WITH WRITTEN REQUEST ONLY



EXTERIOR ELEVATION
(3) DOORS

NOTE: LIFT HANDLES AND STEP PLATES SUPPLIED LOOSE FOR FIELD INSTALLATION



SHOP DRAWINGS APPROVED BY: _____
 PLEASE SIGN AND DATE EACH PAGE OF THE SHOP DRAWINGS FOR APPROVAL





EXISTING CONDITIONS



PROPOSED EXTERIOR CHANGES