



LONG'S ROLEX

Back Bay Architectural Commission
February 12, 2020

Gensler



1



2



3



4



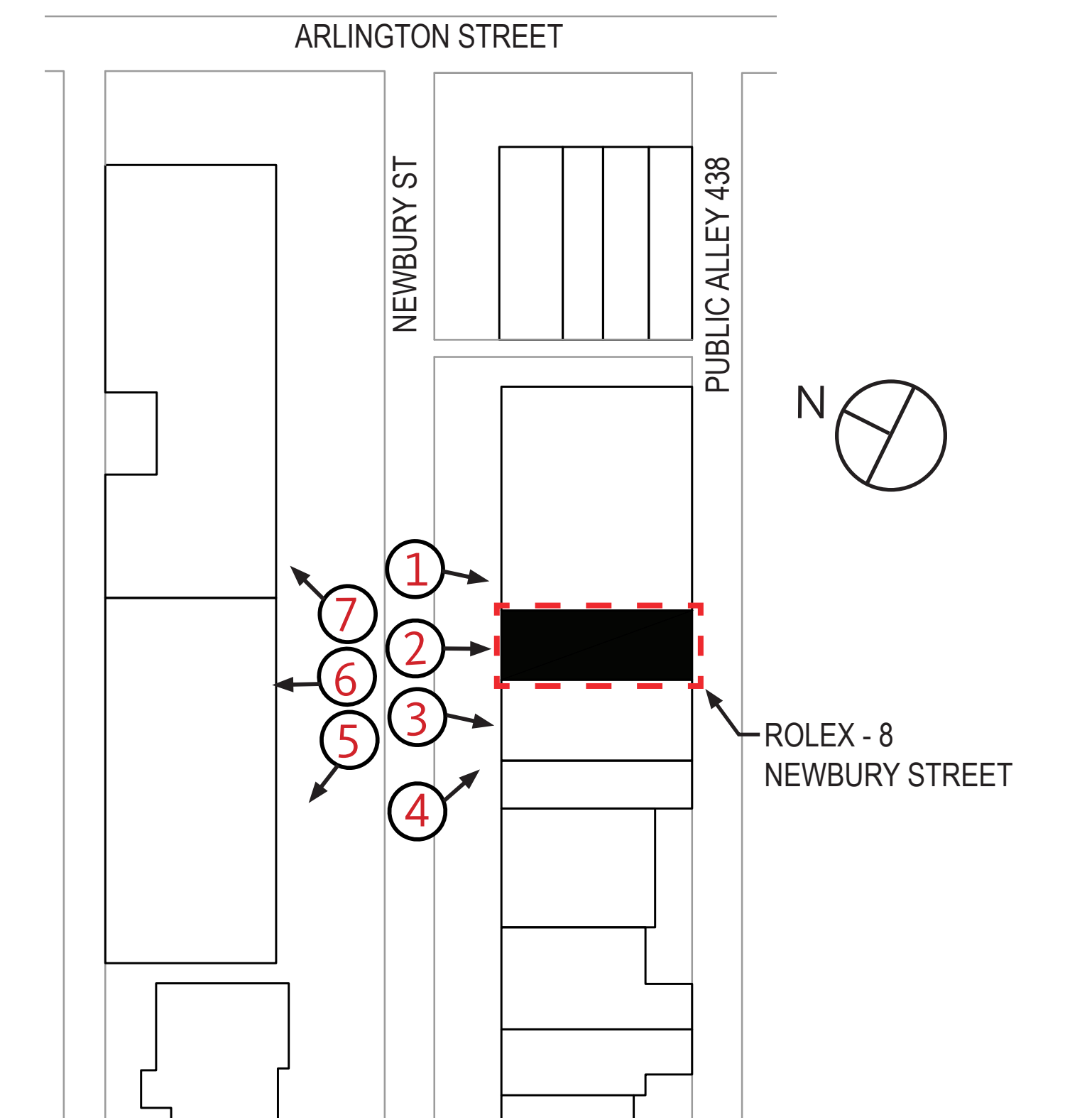
5



6



7



KEY PLAN

EXISTING SITE CONTEXT

Submitted: 22 January 2020

Rolex - 8 NEWBURY STREET





1



2



3



4



5



6



7



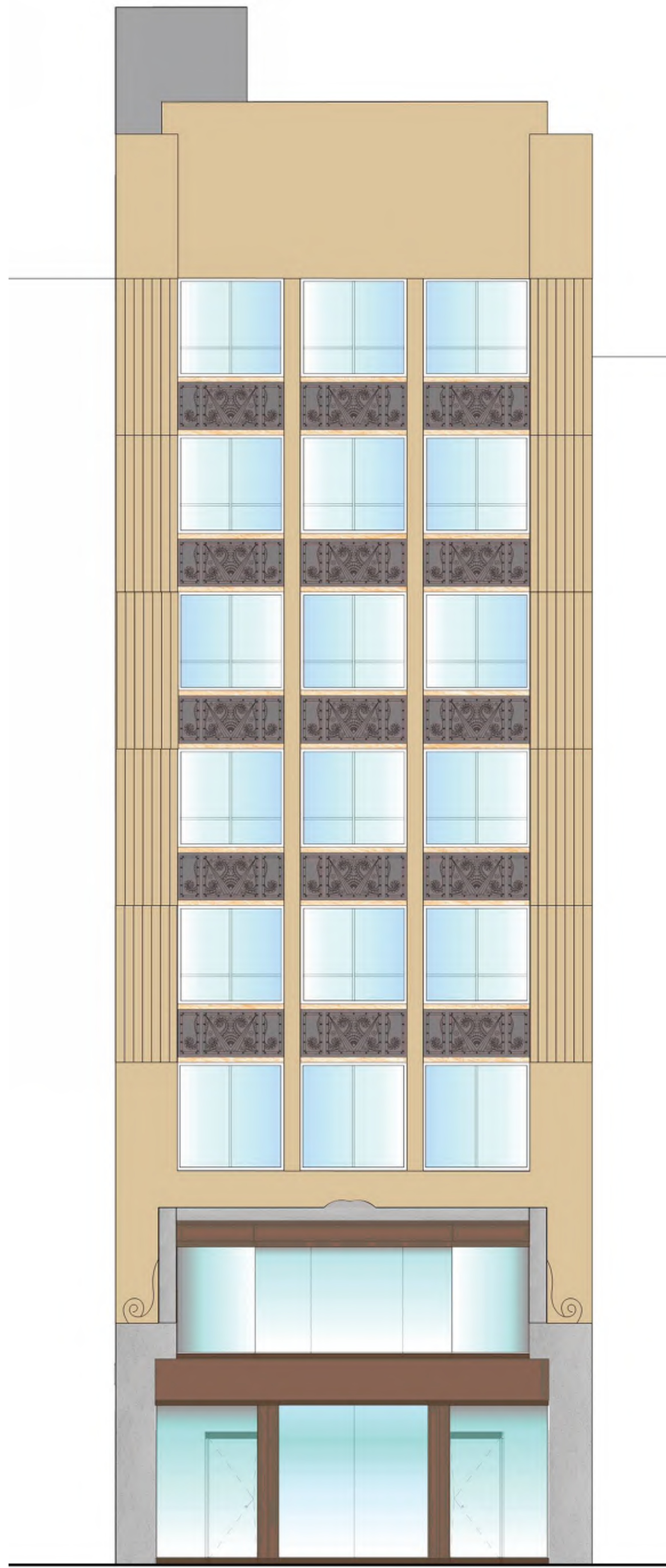
8

Submitted: 22 January 2020

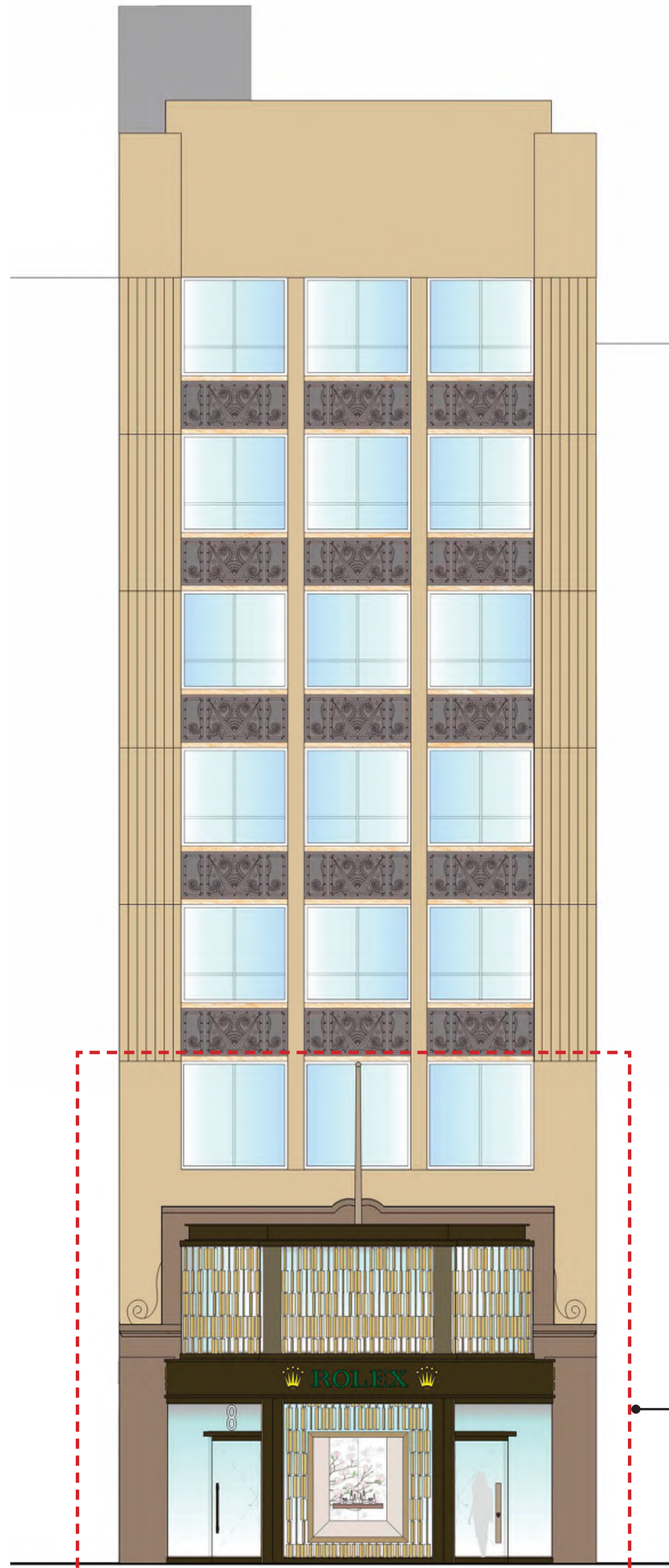
Rolex - 8 NEWBURY STREET

EXISTING SITE CONTEXT

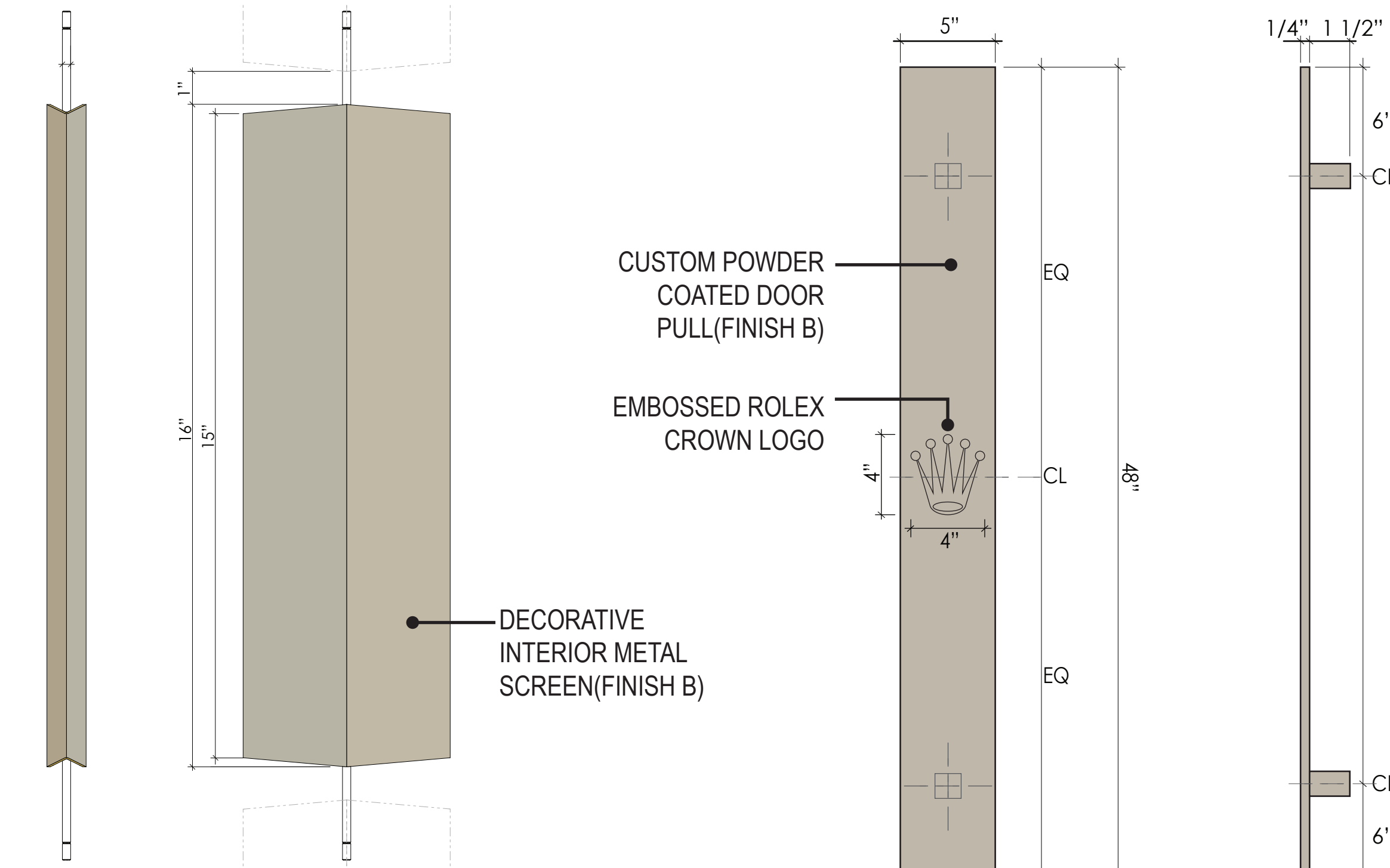




1. EXISTING ELEVATION - ENLARGED



2. PROPOSED ELEVATION

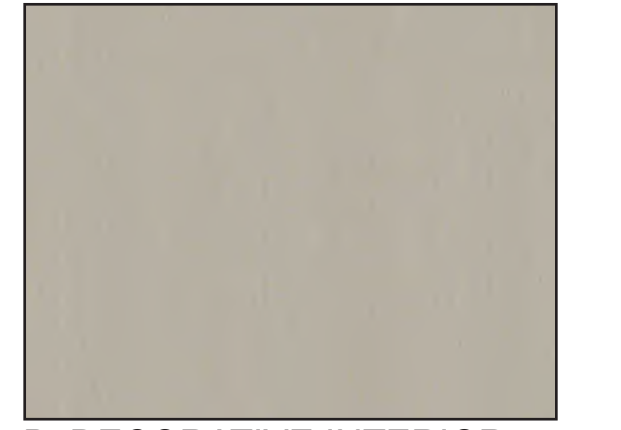


3. DECORATIVE METAL SCREEN DETAILS

4. DOOR PULL DETAILS



A. EXTERIOR PAINT -
POWDER COATED PAINT IGP
DURA FACE 5803, MATTE
FINISH



B. DECORATIVE INTERIOR
METAL SCREEN,
CHAMPAGNE COLOR, BWB-
BAUSILBER 6 E4

5. MATERIAL AND FINISHES

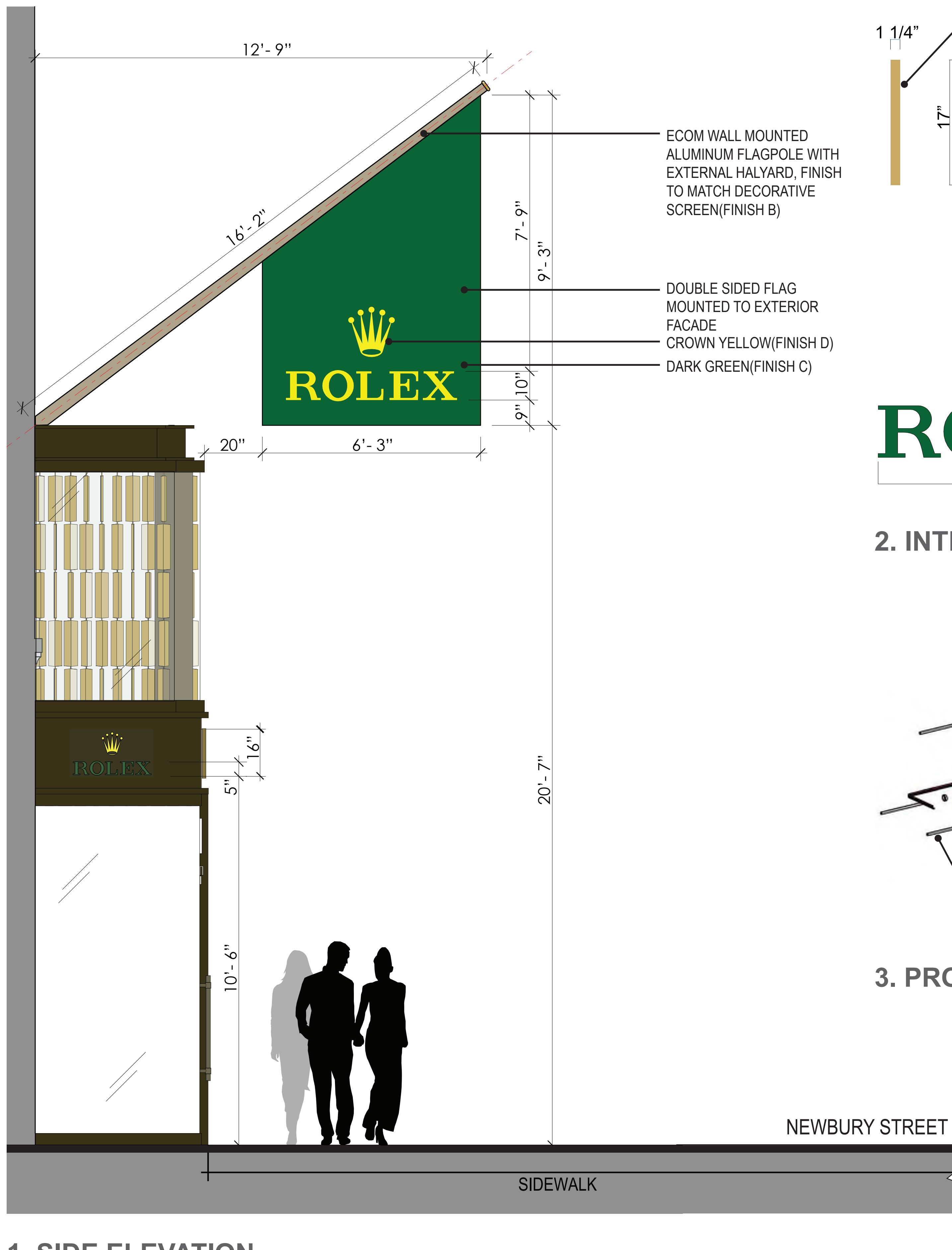


6. PROPOSED ELEVATION - ENLARGED

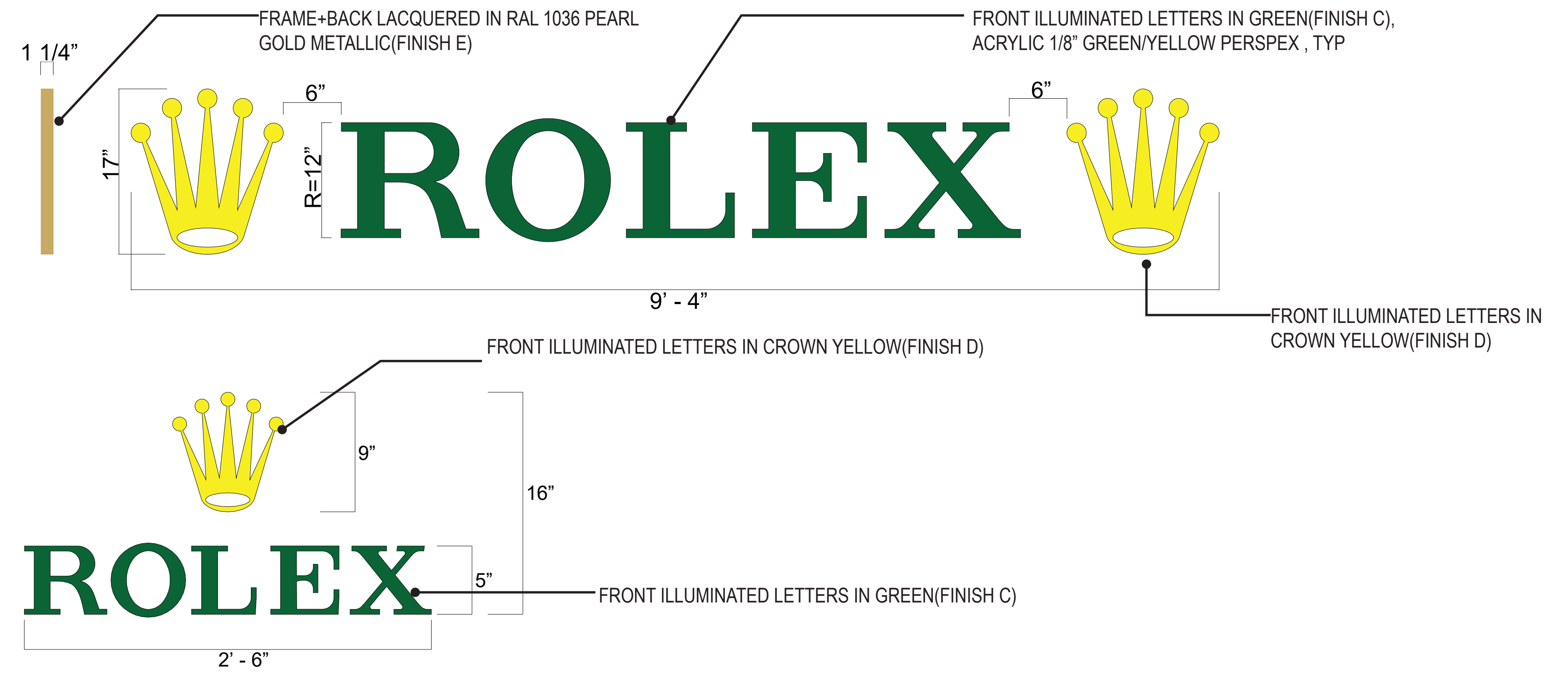
Submitted: 22 January 2020

Rolex - 8 NEWBURY STREET

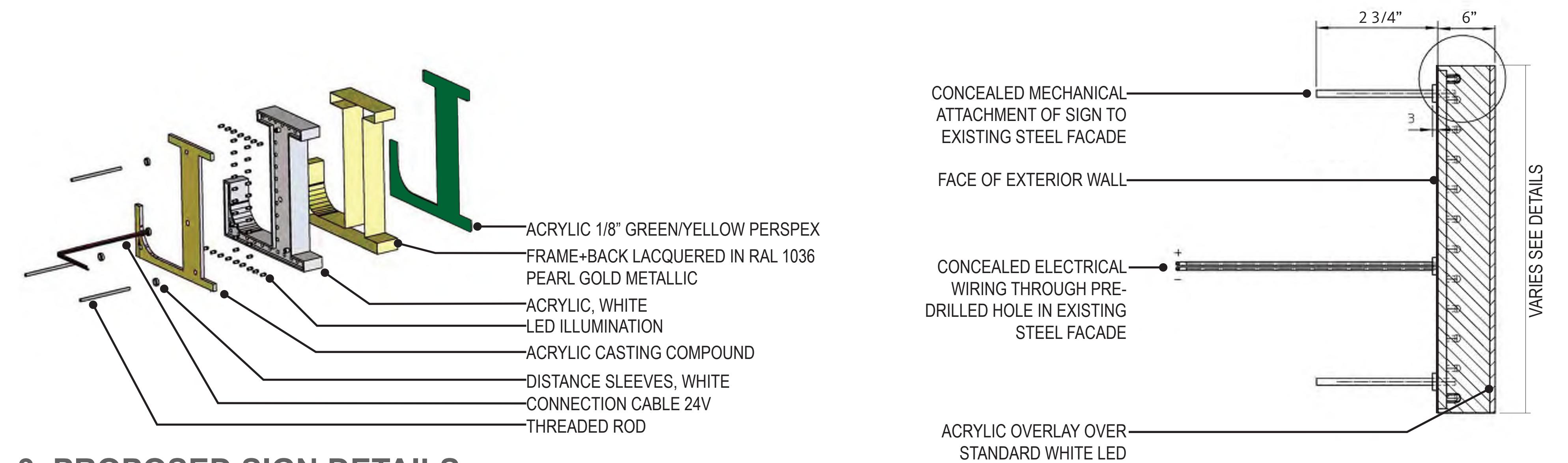
NEWBURY STREET FACADE



1. SIDE ELEVATION



2. INTERNALLY ILLUMINATED SIGNAGE



3. PROPOSED SIGN DETAILS



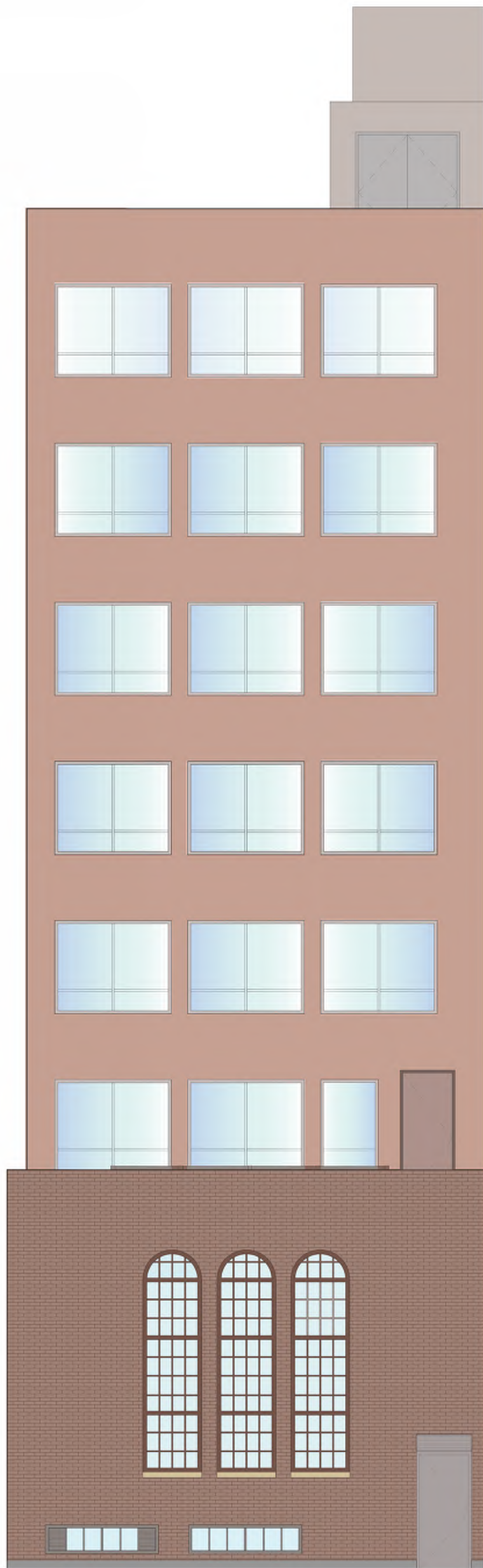
4. MATERIAL AND SIGNAGE COLOR

Submitted: 22 January 2020

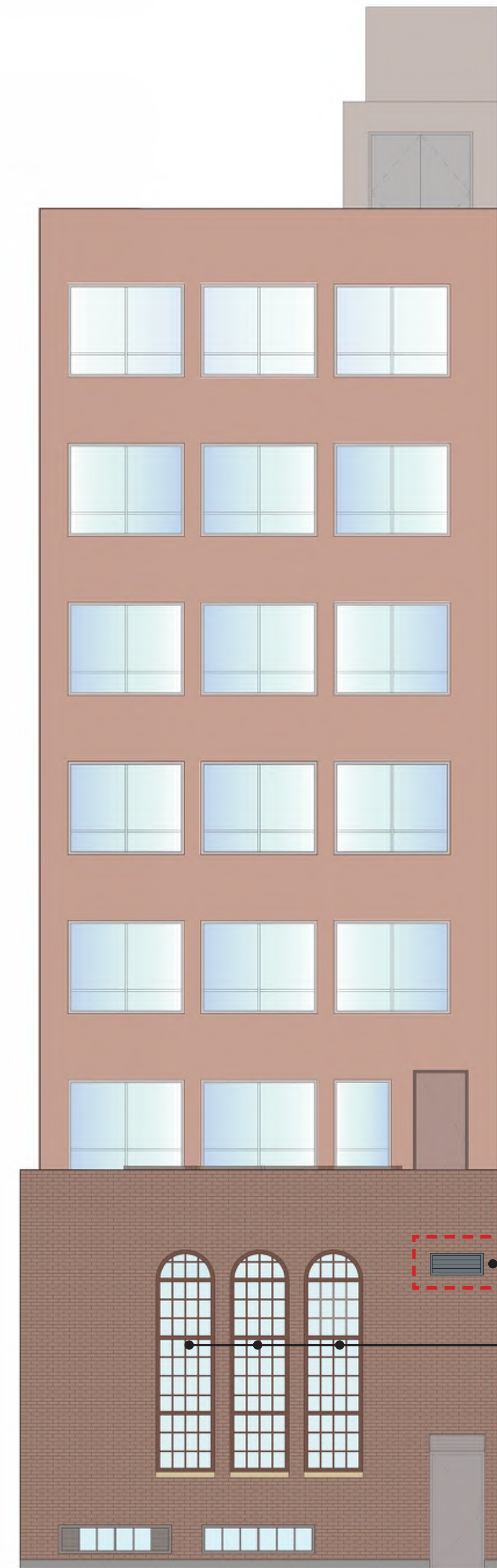
Rolex - 8 NEWBURY STREET

FACADE FLAG & SIGNAGE





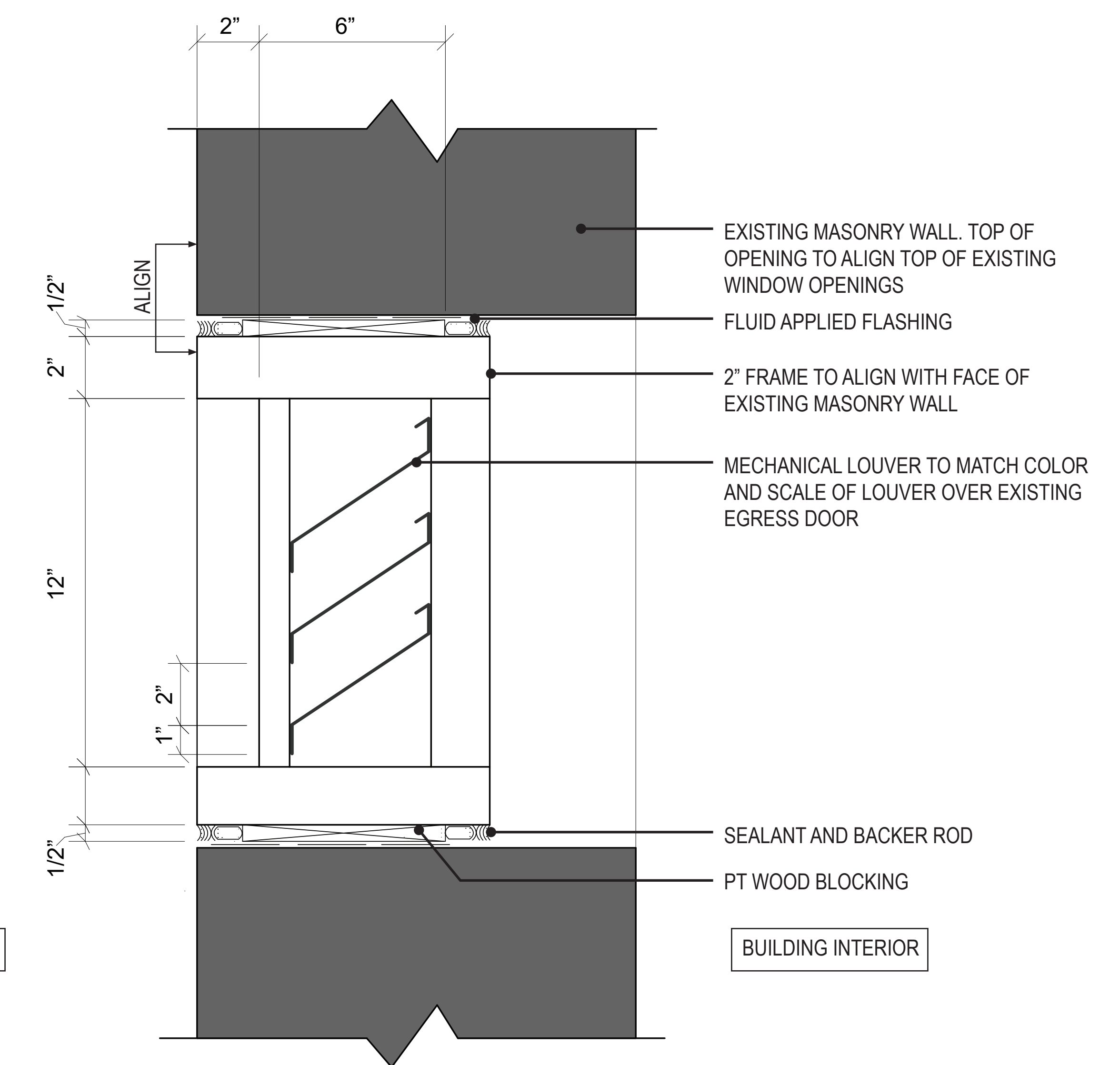
1. EXISTING REAR ELEVATION



2. PROPOSED REAR ELEVATION

12" X 36" LOUVER, SEE
DETAIL SECTION 3

APPLY OPAQUE WINDOW
FILM INSIDE



3. DETAIL OF THE VENT



4. EXISTING CONDITION

Submitted: 22 January 2020

Rolex - 8 NEWBURY STREET

REAR ELEVATION





Submitted: 22 January 2020

Rolex - 8 NEWBURY STREET

PROPOSED RENDERINGS

