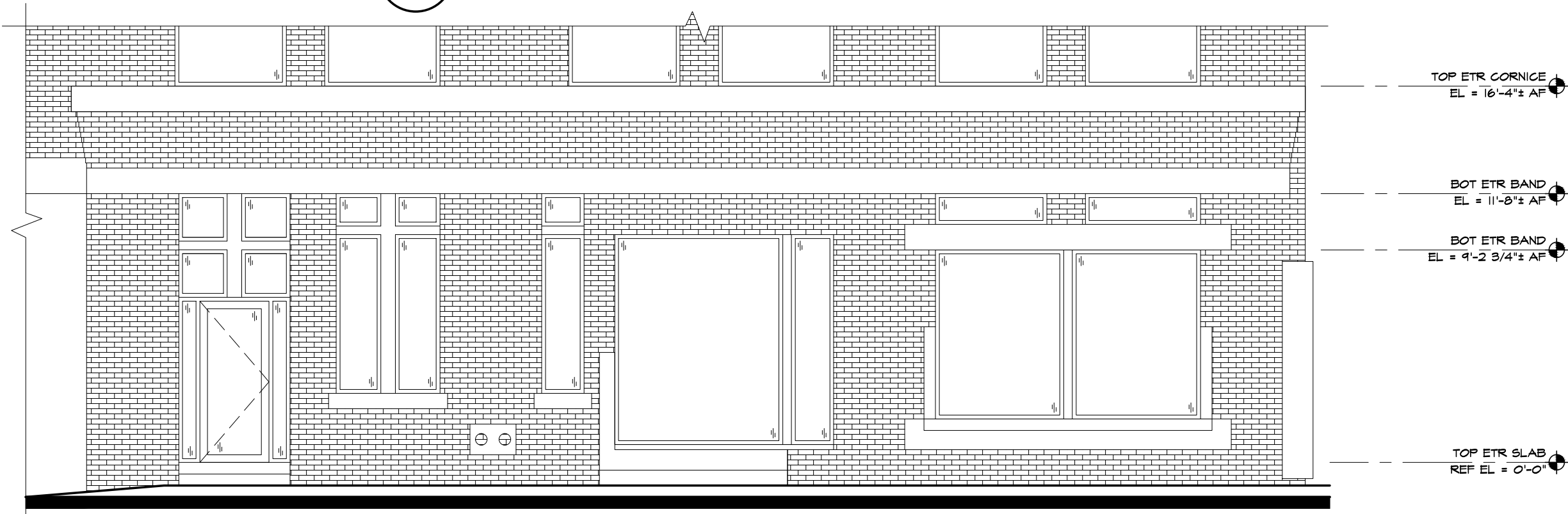


**2 PROPOSED STREET ELEVATION**  
SCALE: 3/16" = 1'-0"



**1 EXISTING STREET ELEVATION**  
SCALE: 3/16" = 1'-0"



**AHARONIAN & ASSOCIATES INC.**  
ARCHITECTS

310 George Washington Highway  
Suite 100  
Smithfield, Rhode Island  
0 2 9 1 7  
T 401-232-5010  
F 401-232-5080  
WWW.ARCH-ENG.COM

REVISIONS		
NUMBER	REMARKS	DATE

**FOR REVIEW**

PROJECT TITLE  


34 FARNSWORTH STREET  
BOSTON, MA 02210  
SUFFOLK COUNTY

DRAWING TITLE  
**EXIST & PROPOSED ELEVATION**

DATE JAN 31, 2020	PROJ NO 19103
DRAWN BY JB	CHECKED BY JB

DRAWING NUMBER  
**A3.1**



**AHARONIAN  
& ASSOCIATES INC.**  
ARCHITECTS

310 George Washington Highway  
Suite 100  
Smithfield, Rhode Island  
0 2 9 1 7  
T 401-232-5010  
F 401-232-5080  
WWW.ARCH-ENG.COM

**HARDWARE SETS**

ALL HARDWARE SHALL BE ADA COMPLIANT WHETHER OR NOT SPECIFIED HEREIN

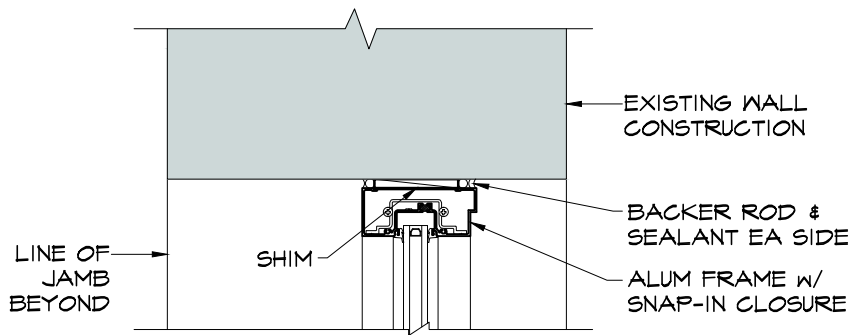
- SET E-1** BY ALUM MANUF  
CONTINUOUS GEARED HINGE  
| DEADLOCK  
| PUSH BAR  
| "D" DOOR PULL HANDLE  
| CLOSER  
| THRESHOLD  
| SET PERIMETER GASKETING  
| BOT SWEEP  
| FINGER GUARD

ADAMS RITE MS 1850A

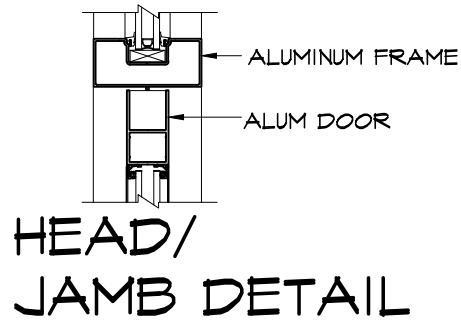
PINK - SEE NATIONAL ACCOUNTS  
HAGER 8501 DA  
HAGER 4315 MIL

**DOOR & FRAME NOTES**

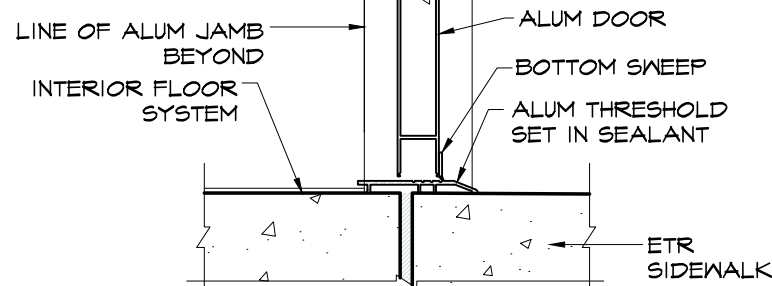
- TEMPERED GLASS REQUIRED AT ALL LOCATIONS WHERE INDICATED BY "T".
- ALUM STOREFRONT: STYLE & COLOR TO MATCH EXISTING ADJACENT (F1 SHALL BE BLACK, IONIZED; F2 SHALL BE GREEN).



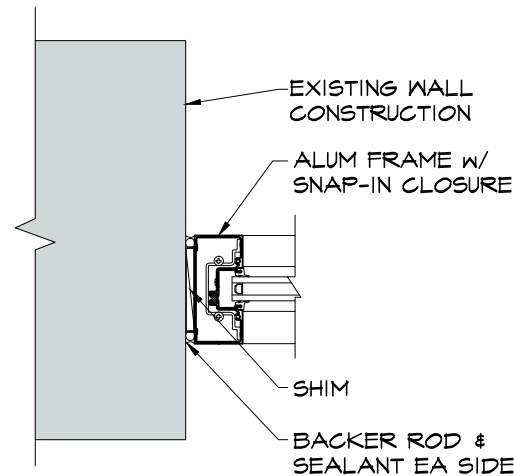
**5 HEAD DETAIL**  
A4.1 SCALE: 1 1/2" = 1'-0"



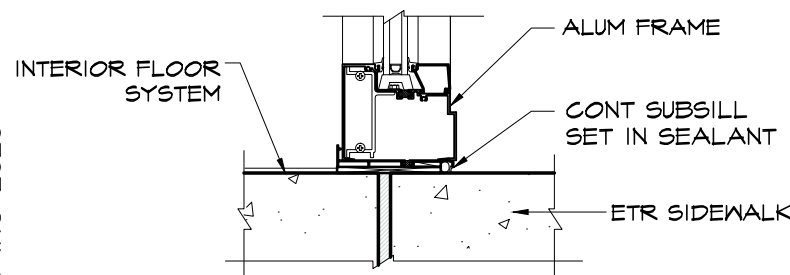
**2 HEAD/JAMB DETAIL**  
A4.1 SCALE: 1 1/2" = 1'-0"



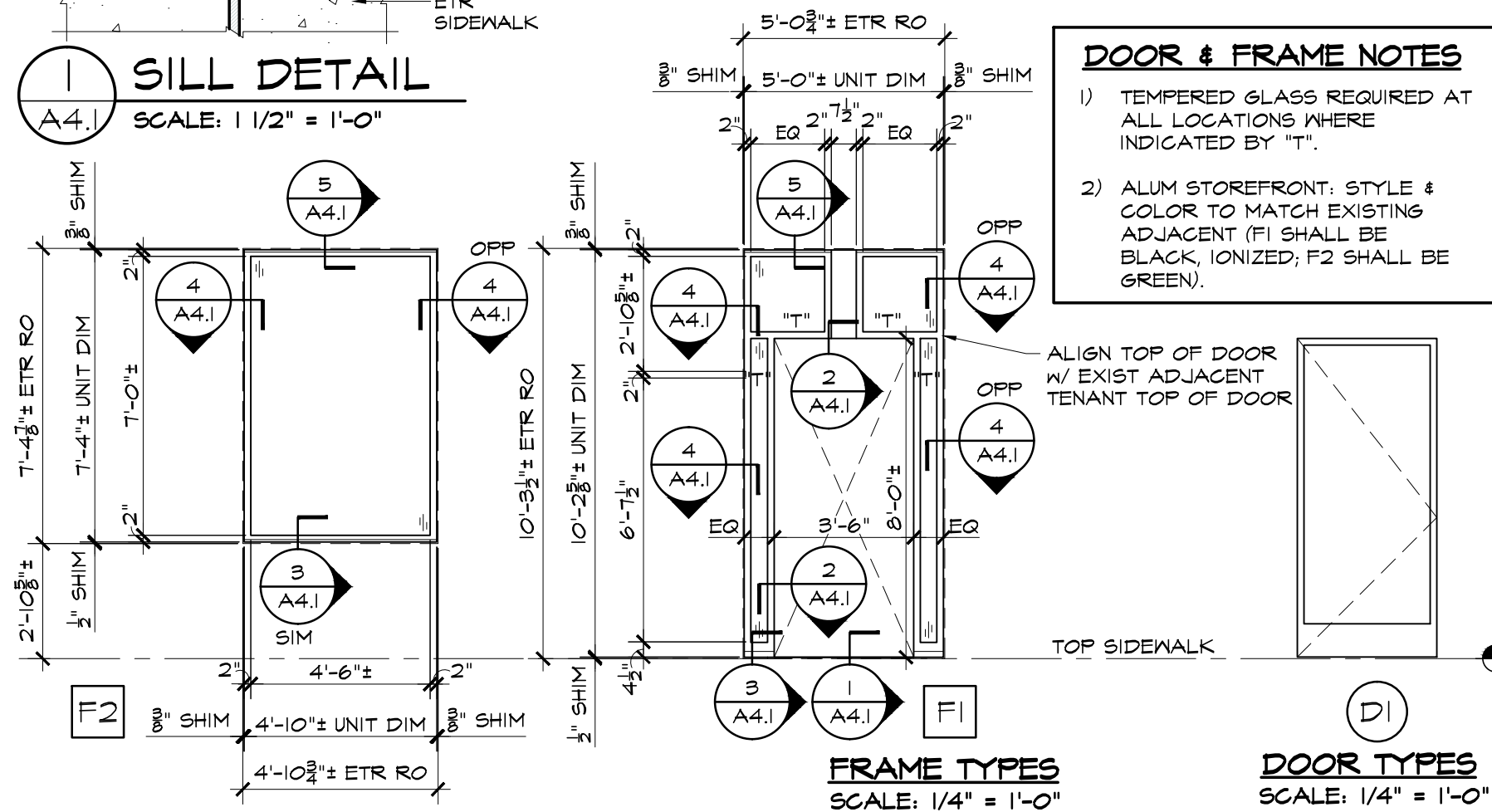
**1 SILL DETAIL**  
A4.1 SCALE: 1 1/2" = 1'-0"



**4 JAMB DETAIL**  
A4.1 SCALE: 1 1/2" = 1'-0"



**3 SILL DETAIL**  
A4.1 SCALE: 1 1/2" = 1'-0"



REVISIONS		
NUMBER	REMARKS	DATE

**FOR REVIEW**

PROJECT TITLE  
**DUNKIN' BRANDS**  
[eatdrinkthink]  
PC# NEW

34 FARNSWORTH STREET  
BOSTON, MA 02210  
SUFFOLK COUNTY

DRAWING TITLE  
**STOREFRONT  
SECTION & DTLS**

DATE JAN 31, 2020	PROJ NO 19103
DRAWN BY JB	CHECKED BY JB

DRAWING NUMBER

**A4.1**

**DOOR SCHEDULE**

No	ROOM (FROM / TO)	TYPE	DOOR				FRAME			HDW	REMARKS				
			WIDTH	HEIGHT	THICK	MAT	FINISH	HEAD DTL	JAMB DTL			SILL DTL			
100	TENANT SPACE / EXTERIOR	D1	3'-6"	8'-0"±	1 3/4"	ALUM/GL	PRE-FIN.	2/A4.1	2#3/A4.1	1/A4.1	F1	ALUM	PRE-FIN.	E-1	



**AHARONIAN  
& ASSOCIATES INC.**  
ARCHITECTS

310 George Washington Highway  
Suite 100  
Smithfield, Rhode Island  
0 2 9 1 7  
T 4 0 1 - 2 3 2 - 5 0 1 0  
F 4 0 1 - 2 3 2 - 5 0 8 0  
WWW.ARCH-ENG.COM

REVISIONS		
NUMBER	REMARKS	DATE

**FOR REVIEW**

PROJECT TITLE  
**DUNKIN' BRANDS**  
[eatdrinkthink]  
PC# NEW

34 FARNSWORTH STREET  
BOSTON, MA 02210  
SUFFOLK COUNTY

DRAWING TITLE  
**STOREFRONT  
SECTION & DTLS**

DATE JAN 31, 2020	PROJ NO 19103
DRAWN BY JB	CHECKED BY JB

DRAWING NUMBER  
**A4.1 alt**

**HARDWARE SETS**

ALL HARDWARE SHALL BE ADA COMPLIANT WHETHER OR NOT SPECIFIED HEREIN

**SET E-1** BY ALUM MANUF  
CONTINUOUS GEARED HINGE

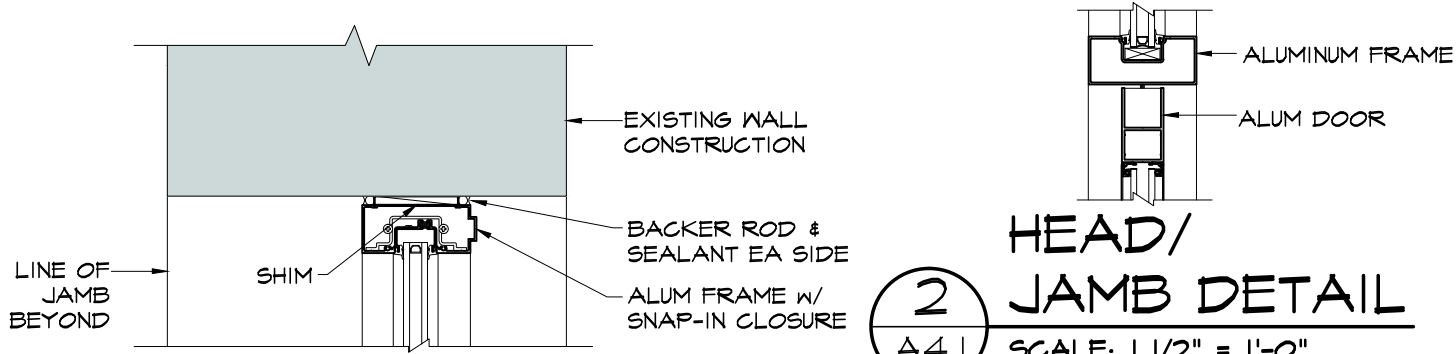
- | DEADLOCK
- | PUSH BAR
- | "D" DOOR PULL HANDLE
- | CLOSER
- | THRESHOLD
- | SET PERIMETER GASKETING
- | BOT SWEEP
- | FINGER GUARD

ADAMS RITE MS 1850A

PINK - SEE NATIONAL ACCOUNTS  
HAGER 8501 DA  
HAGER 4315 MIL

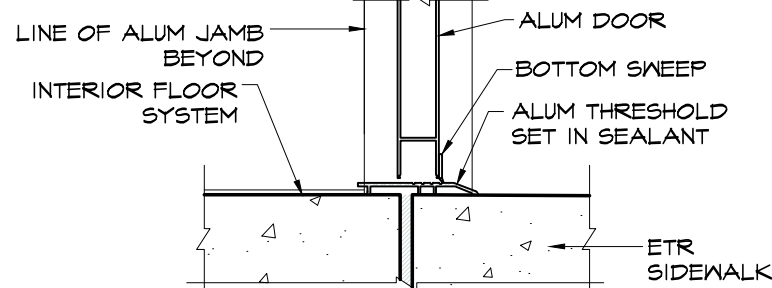
**DOOR & FRAME NOTES**

- 1) TEMPERED GLASS REQUIRED AT ALL LOCATIONS WHERE INDICATED BY "T".
- 2) ALUM STOREFRONT: STYLE & COLOR TO MATCH EXISTING ADJACENT (F1 SHALL BE BLACK, IONIZED; F2 SHALL BE GREEN).

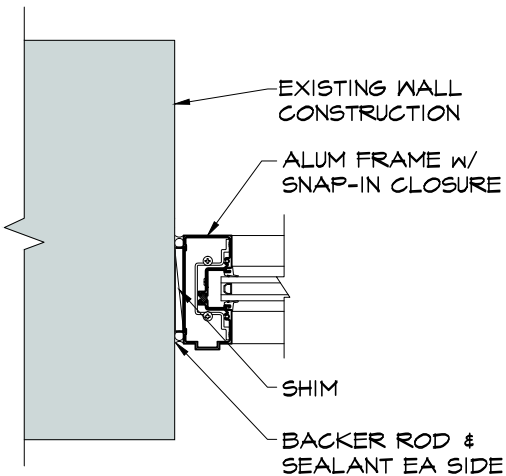


**2 HEAD/JAMB DETAIL**  
A4.1 SCALE: 1 1/2" = 1'-0"

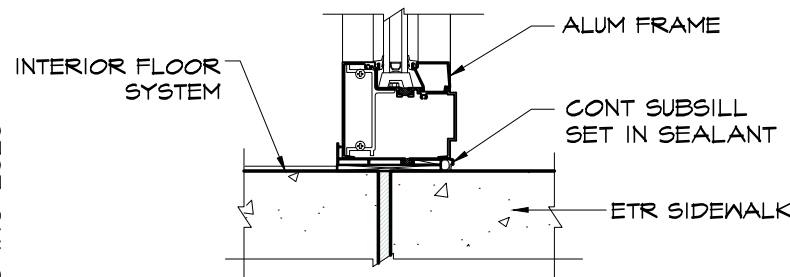
**5 HEAD DETAIL**  
A4.1 SCALE: 1 1/2" = 1'-0"



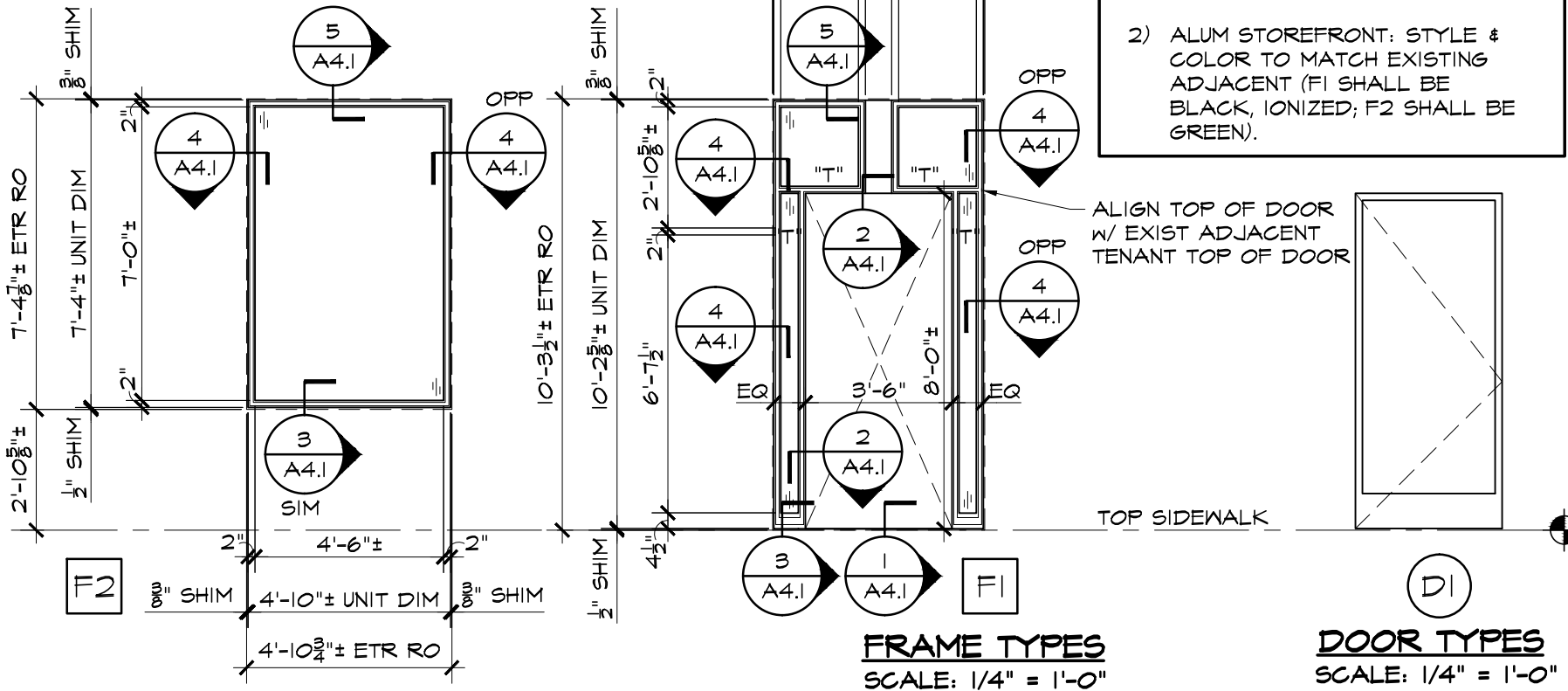
**1 SILL DETAIL**  
A4.1 SCALE: 1 1/2" = 1'-0"



**4 JAMB DETAIL**  
A4.1 SCALE: 1 1/2" = 1'-0"



**3 SILL DETAIL**  
A4.1 SCALE: 1 1/2" = 1'-0"



**FRAME TYPES**  
SCALE: 1/4" = 1'-0"

**DOOR TYPES**  
SCALE: 1/4" = 1'-0"

**DOOR SCHEDULE**

No	ROOM (FROM / TO)	TYPE	WIDTH	HEIGHT	THICK	MAT	FINISH	DOOR			FRAME			HDW SET	REMARKS
								HEAD DTL	JAMB DTL	SILL DTL	TYPE	MAT	FINISH		
100	TENANT SPACE / EXTERIOR	D1	3'-6"	8'-0"±	1 3/4"	ALUM/GL	PRE-FIN.	2/A4.1	2#3/A4.1	1/A4.1	F1	ALUM	PRE-FIN.	E-1	

NOTES

1. ALUMINUM ANGLE FRAME, SIZE VARIES
2. ALUMINUM THICK WHITE ACRYLIC FACE PANEL
3. LED ILLUMINATED CHANNEL LETTER SIGNAGE

ADDITIONAL NOTES:

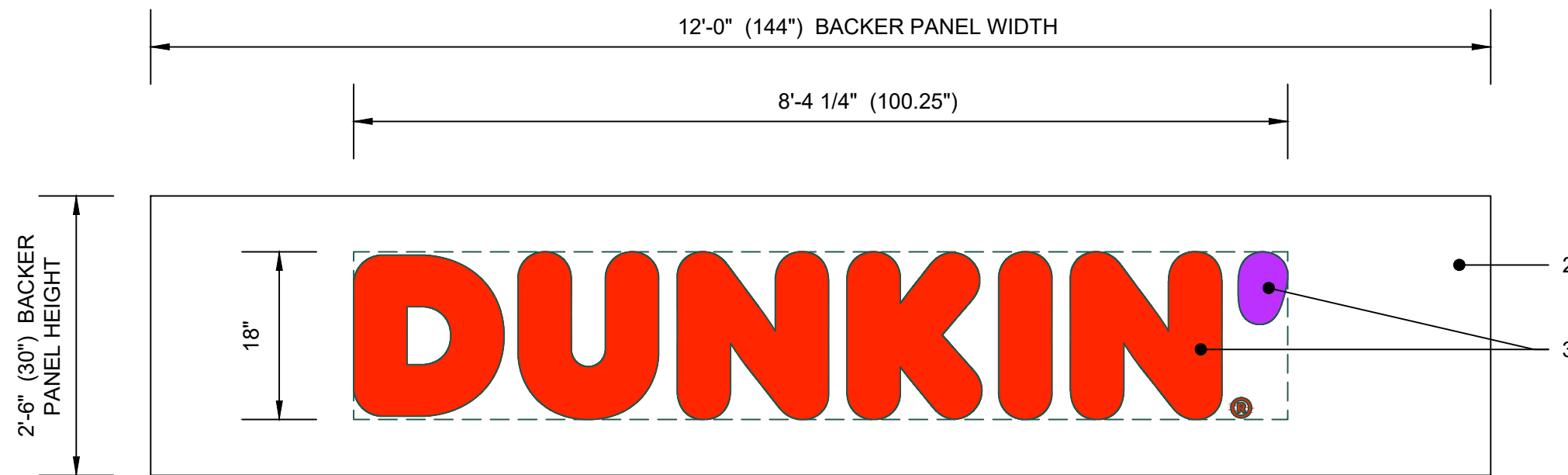
ARTWORK FONT : DUNKIN SANS DISPLAY

CHANNEL LETTER INTERIOR PAINTED REFLECTIVE WHITE

ELECTRICAL : (1) 20-AMP / 120 VOLT CIRCUIT

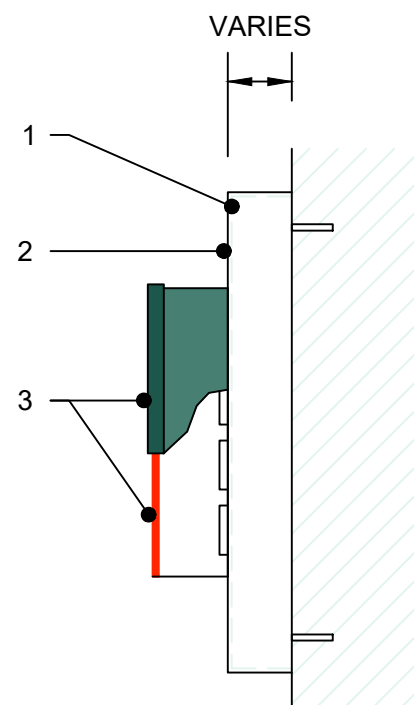
U.L. LISTED

LED'S TO BE POPULATED FOR EVEN AND CONSISTENT LIGHTING WITHOUT HOT SPOTS OR SHADOWS



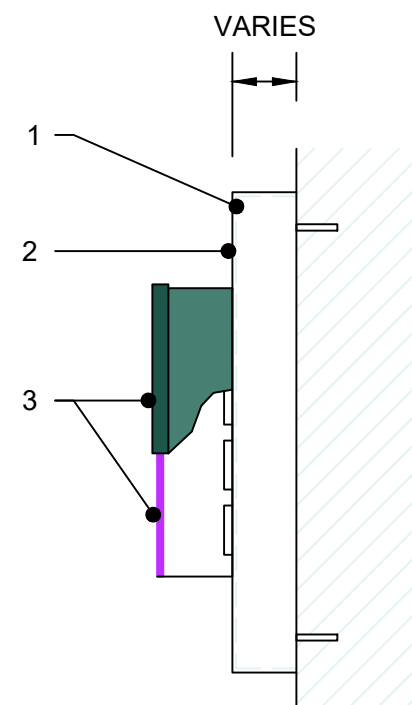
LED ILLUMINATED CHANNEL LETTER BACKER PANEL

SCALE : N.T.S.



ORANGE "DUNKIN" CROSS SECTION

SCALE : N.T.S.



PINK APOSTROPHE (') CROSS SECTION

SCALE : N.T.S.

PMS	VINYL / PAINT
PMS 165 - DUNKIN' ORANGE	3M #3630-3123
PMS 219 - DUNKIN' PINK	3M #3630-1379
PMS 7540C - DUNKIN' GRAY	3M #7725-41
PMS COOL GRAY 1C	3M #7725-11



THE INTENT OF THIS DRAWING IS TO SHOW A CONCEPTUAL REPRESENTATION OF THE PROPOSED SIGNAGE. DUE TO VARIATIONS IN PRINTING DEVICES AND SUBSTRATES THE FINISHED PRODUCT MAY DIFFER SLIGHTLY FROM DRAWINGS.

DD BUILDING & SITE SIGNAGE  
CHANNEL SIGN BACKER PANEL

DATE: 10.23.2019 REV. #01

DUNKIN' BRANDS INC.  
CONSTRUCTION SERVICES

DD-BS-06

NOTES

1. ALUMINUM ANGLE FRAME CONSTRUCTION
2. .08" ALUMINUM SKIN
3. ALUMINUM RETAINER ACCENT
4. GE TETRA MAX 7100K WHITE LED'S  
(OR GE REPLACEMENT EQUIVALENT)
5. REMOTE POWER SUPPLY, AS REQUIRED
6. INTERNAL DISCONNECT SWITCH
7. SUPPORT TUBE
8. MOUNTING PLATE
9. FACES TO BE FLAT CLEAR SOLAR GRADE POLYCARBONATE
10. "DUNKIN'" LETTERS AND REGISTERED "R" TO BE FLAT GRAPHIC
11. BACKGROUND COLOR TO BE 403 WHITE BACK-SPRAY
12. 3M #3630-3123 DUNKIN' ORANGE TRANSLUCENT FILM 2ND SURFACE
13. 3M #3630-1379 DUNKIN' PINK TRANSLUCENT FILM 2ND SURFACE
14. 3M #3635-70 WHITE DIFFUSER 2ND SURFACE

ADDITIONAL NOTES:

ARTWORK FONT : DUNKIN SANS DISPLAY

EXTERIOR FINISH : PAINT PANTONE 7540C

INTERIOR FINISH : PAINTED REFLECTIVE WHITE

ACCENT FINISH / 1 1/2" CABINET W/ RETAINER : PAINT PANTONE 7540C

SKINS REMOVABLE FOR SERVICE ACCESS

PLATE MOUNT INSTALLATION

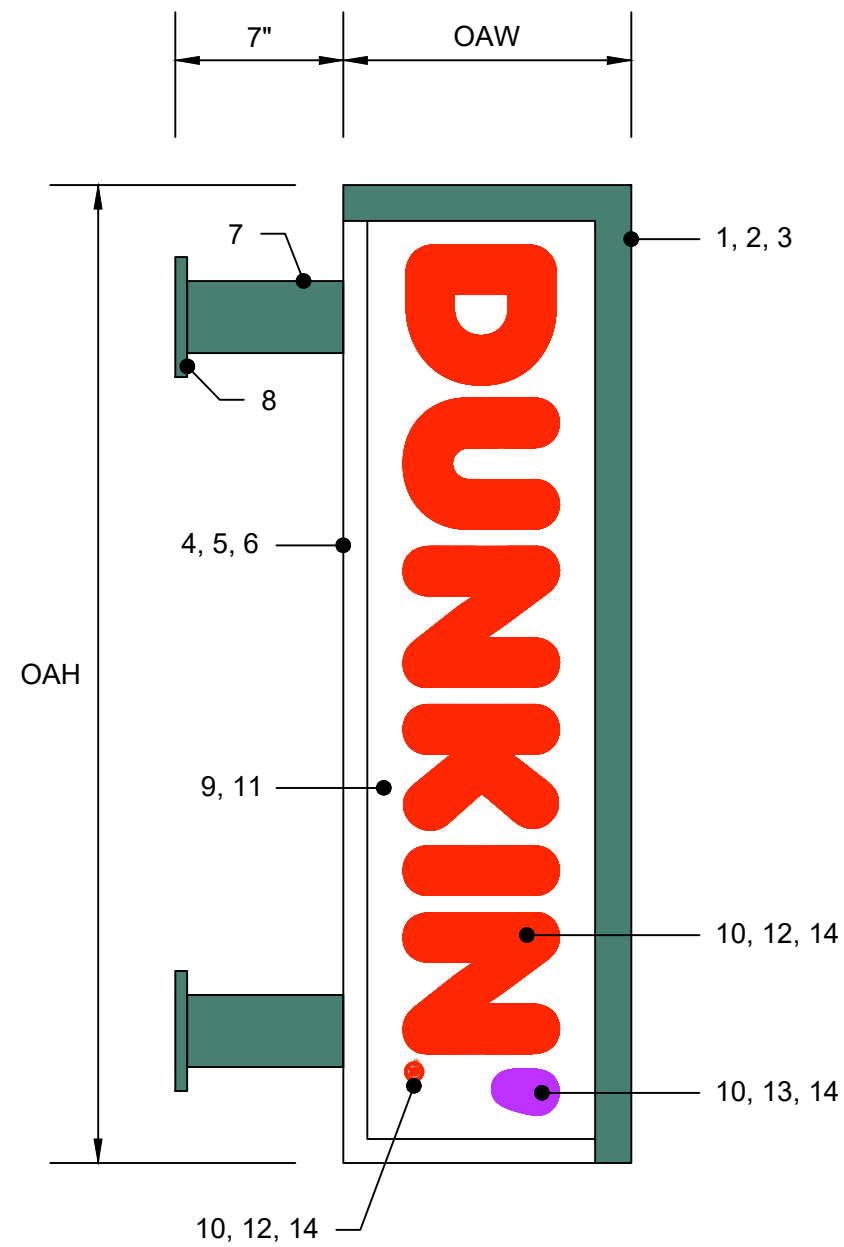
U.L. LISTED

BOLT PATTERN : SMALL 4" / 4", MEDIUM 4" / 4", LARGE 6" / 6"

PLATE SIZE : SMALL & MEDIUM 1/2" x 6" x 6", LARGE 1/2" x 8" x 8"

PERIMETER ANGLE : 1 1/2" x 1 1/2" x 3/16"

ELECTRICAL : (1) 20-AMP / 120 VOLT CIRCUIT



LED ILLUMINATED  
BLADE SIGN (SIDE A)  
SCALE : N.T.S.



LED ILLUMINATED  
BLADE SIGN (SIDE C)  
SCALE : N.T.S.



LED ILLUMINATED  
BLADE SIGN (SIDE B)  
SCALE : N.T.S.

SIZE	OAW	OAH	OAD	S.F. (BOX)
SMALL	12"	40.75"	10"	3.4'
MEDIUM	18"	61"	10"	7.64'
LARGE	24"	81.5"	10"	13.58'
CUSTOM	-	-	-	-

PMS	VINYL / PAINT
PMS 165 - DUNKIN' ORANGE	3M #3630-3123
PMS 219 - DUNKIN' PINK	3M #3630-1379
PMS 7540C - DUNKIN' GRAY	3M #7725-41
PMS COOL GRAY 1C	3M #7725-11



THE INTENT OF THIS DRAWING IS TO SHOW A CONCEPTUAL REPRESENTATION OF THE PROPOSED SIGNAGE. DUE TO VARIATIONS IN PRINTING DEVICES AND SUBSTRATES THE FINISHED PRODUCT MAY DIFFER SLIGHTLY FROM DRAWINGS.

DD BUILDING & SITE SIGNAGE  
VERTICAL " DUNKIN' " BLADE SIGN

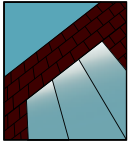
DATE: 10.23.2019 REV. #01

DUNKIN' BRANDS INC.  
CONSTRUCTION SERVICES

DD-BS-BS-01

# YES 45 CS/CI

Center Set, Can Storefront Systems with Monolithic or Insulating Glass



## STOREFRONT SYSTEM

### Product Description

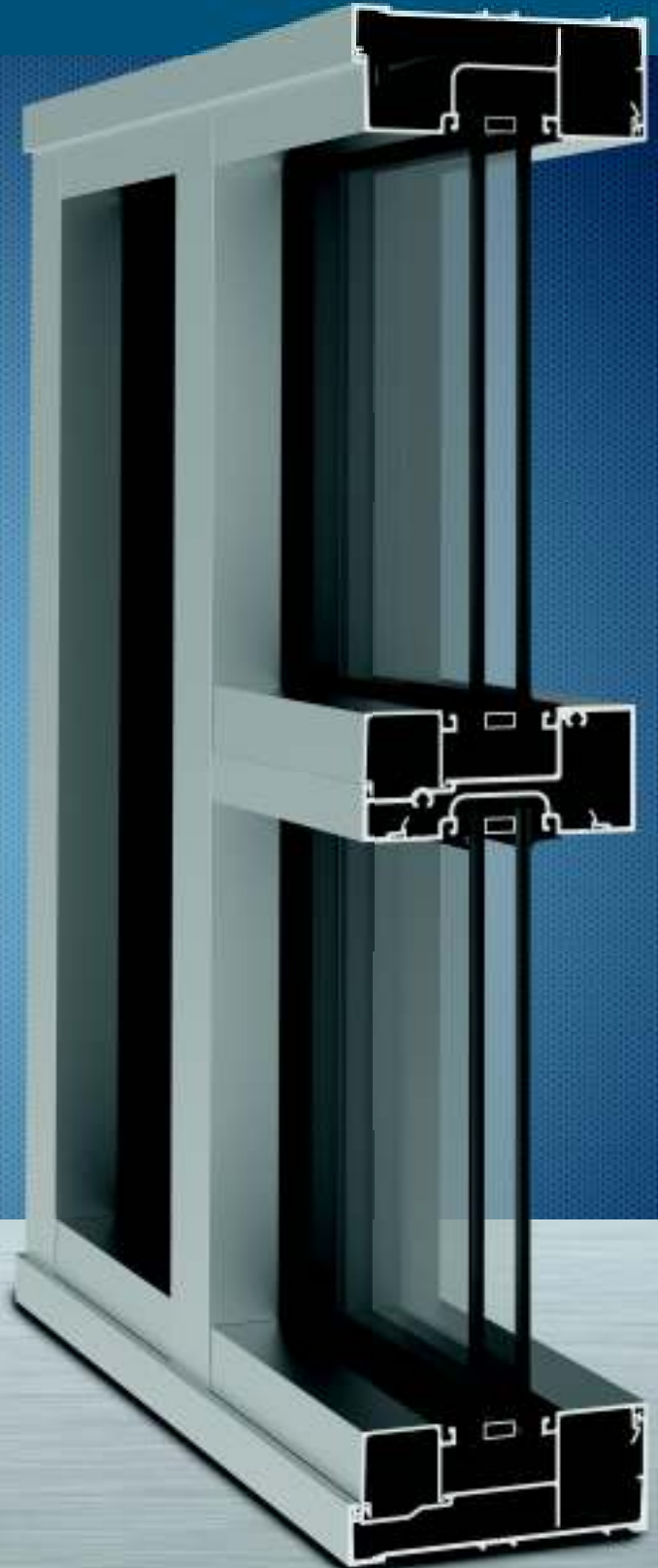
The YES 45 C is a center glazed can system with Monolithic (CS) or Insulating Glass (CI) designed to provide the appearance of standard storefront while providing the benefits of a ribbon window system. Head and sill members are installed in a continuous fashion to provide uninterrupted protection against water infiltration. Vertical members are simply stacked into the head and sill, eliminating the requirement of fasteners and thereby reducing fabrication and installation labor. The YES 45 C can also be glazed from either the outside or interior of the building. Heavy duty versions of both systems are available to meet higher structural performance.

### Product Options & Features

- Outside or Inside Glazed
- Screw Spline or Shear Block Assembly
- Gasket With Stretch-Resistant Cord
- Integrates with Model 20D/35D/50D Doors
- Enhanced Water Infiltration Resistance



**YKK**  
**ap** | Quality  
inspires®

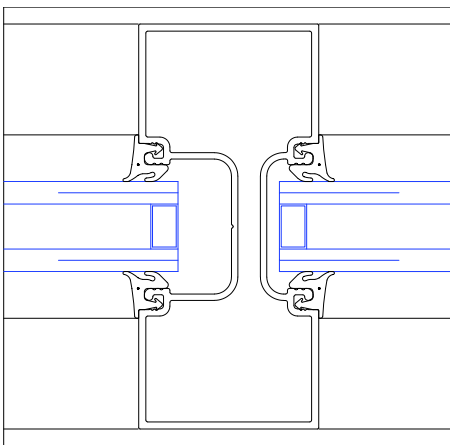


# YES 45 CS/CI

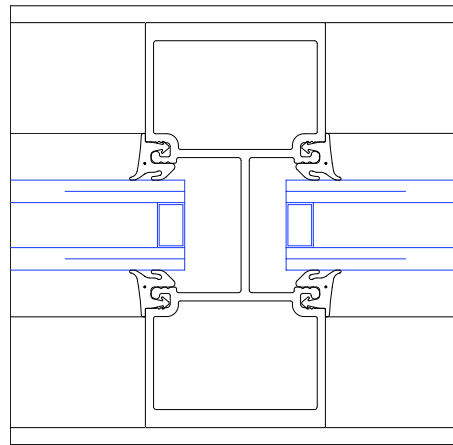
## SYSTEM SPECIFICATIONS

System Sightline	Base Depth	Glazing & Config	Glass	Air Infiltration	Water Infiltration	Thermal Performance	Acoustical Performance
1-3/4" (CS) and 2" (CI)	4-1/2"	Inside or Outside & Center Set	1" IGU with Low-E (C.O.G. U-factor: 0.29)	0.06 CFM/FT <sup>2</sup> (1.10 m <sup>3</sup> /h·m <sup>2</sup> ) @ 6.24 PSF (299 Pa)	<b>Static:</b> 10 PSF (479 Pa) <b>Dynamic:</b> 10 PSF (479 Pa)	<b>U-factor:</b> 0.49 BTU/HR·FT <sup>2</sup> ·°F* <b>CRF:</b> Minimum of 44 on frame**	Std STC: 32 Std OITC: 27  Lam STC: 37 Lam OITC: 30
<b>Testing Standards</b>				ASTM E 283	ASTM E 331 & AAMA 501	* NFRC 100 & ** AAMA 1503	ASTM E 90 & 1425
<b>Installation Options</b>				Shear Block or Screw Spline with Monolithic or Insulating Glass			
<b>Available Finishes</b>				Factory Anodized (AAMA 612) and Organic Paints (AAMA 2604 & AAMA 2605)			

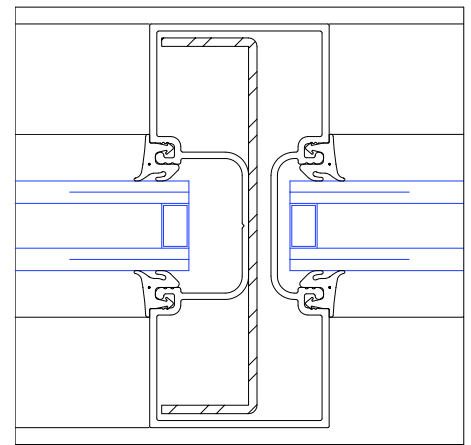
## CAN MULLION SETUPS



Standard



Heavy Duty



Steel Reinforcement

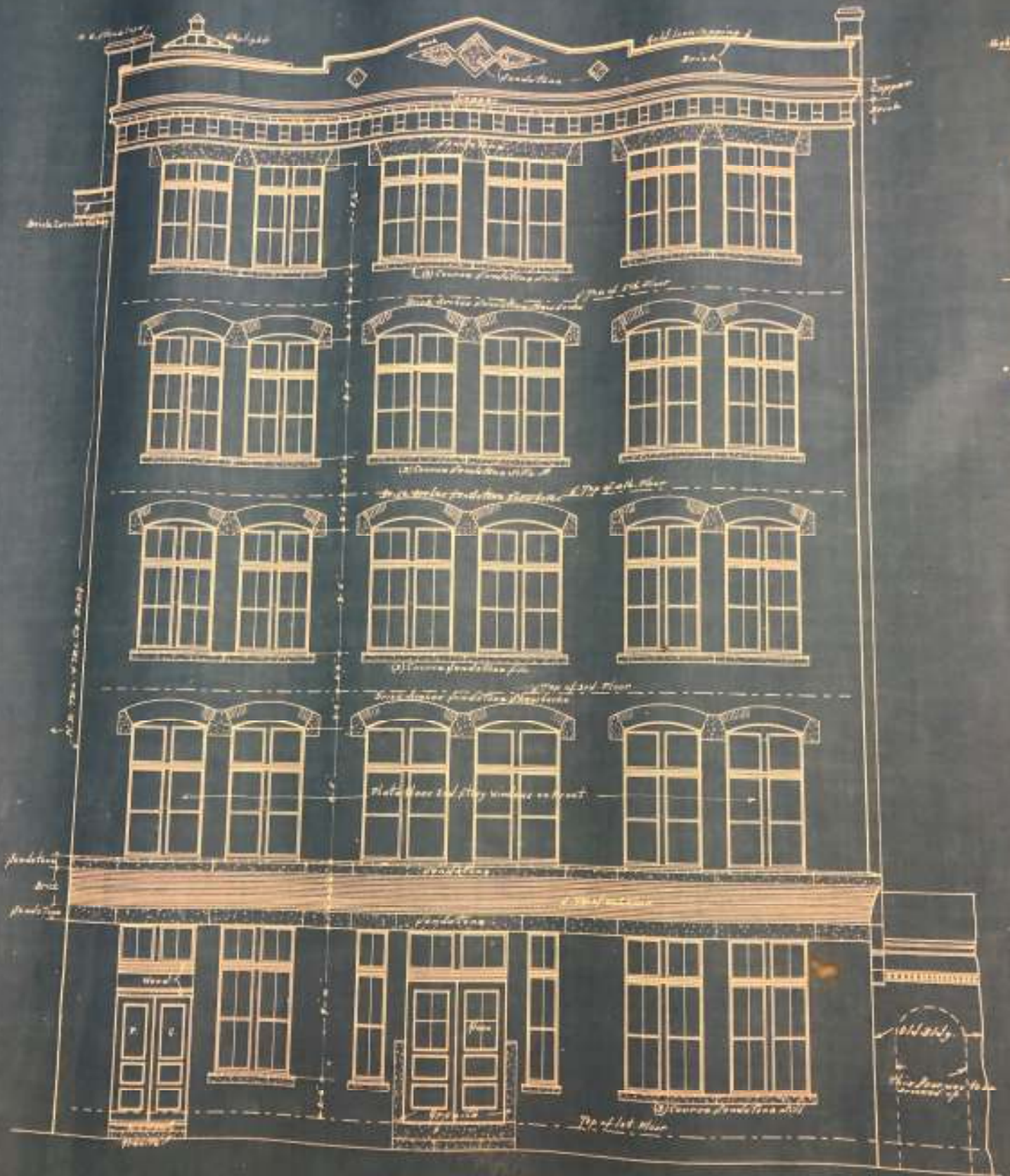


Landmark Hospital Center - Naples, FL

Additional information including CAD details, CSI specifications, Test Reports and Installation instructions are available online at:  
[www.ykkap.com/commercial/product/storefronts/yes-45-cs/](http://www.ykkap.com/commercial/product/storefronts/yes-45-cs/)    [www.ykkap.com/commercial/product/storefronts/yes-45-ci/](http://www.ykkap.com/commercial/product/storefronts/yes-45-ci/)







FRONT ELEVATION  
Scale 1/8" = 1'-0"





RETAIL SPACE  
**FOR LEASE**  
VR VENTURE:  
RETAIL PARTNERS  
857.250.2981  
VRPARTNERS.COM

34 FARNSWORTH

NO PARKING  
ANYTIME

34





**NO  
PARKING**  
EXCEPT BY PERMIT  
EXCEPT BY PERMIT  
EXCEPT BY PERMIT  
←→  
Permitted Parking  
SEE ALL SIGNS



34 EARNSWORTH STREET

FOR LEASE  
887.208.2867

