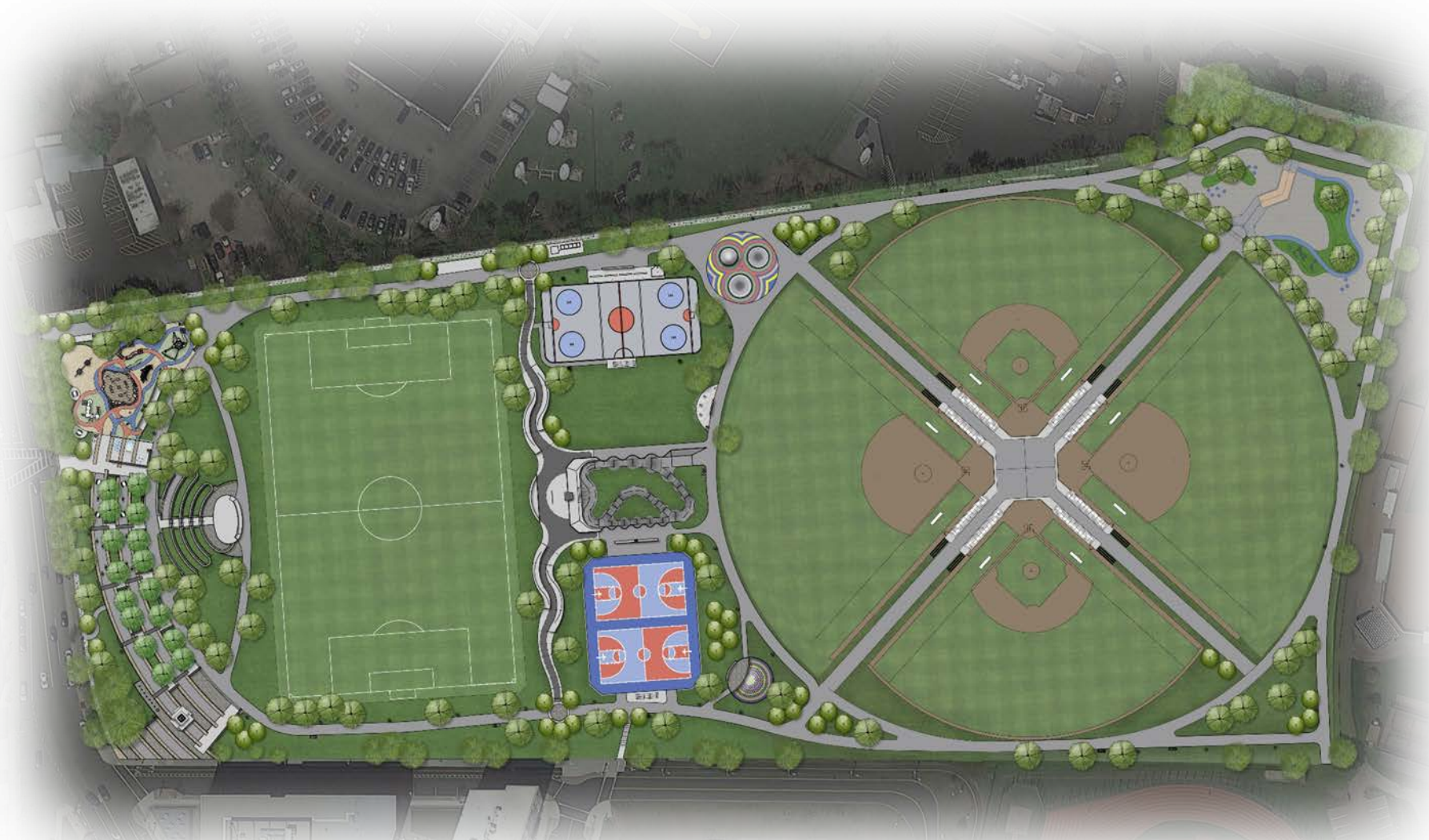


*Improvements to*

# **SMITH PLAYGROUND: PHASE 2**



January 16, 2020  
Boston Parks and Recreation



# AGENDA

---

1

**MEETING #1 PROJECT INTRODUCTION - RECAP**

---

2

**PRESENTATION – DESIGN ALTERNATIVES**

---

3

**LISTENING & DISCUSSION**

---

4

**CLOSING REMARKS & NEXT STEPS**

---

# PROJECT TEAM

---

## **Cathy Baker-Eclipse**

Project Manager

[cathy.baker-eclipse@boston.gov](mailto:cathy.baker-eclipse@boston.gov) or 617-961-3058

## **Stantec Planning & Landscape Architecture**

Kevin Beuttell, Project Manager

## **Conor Newman**

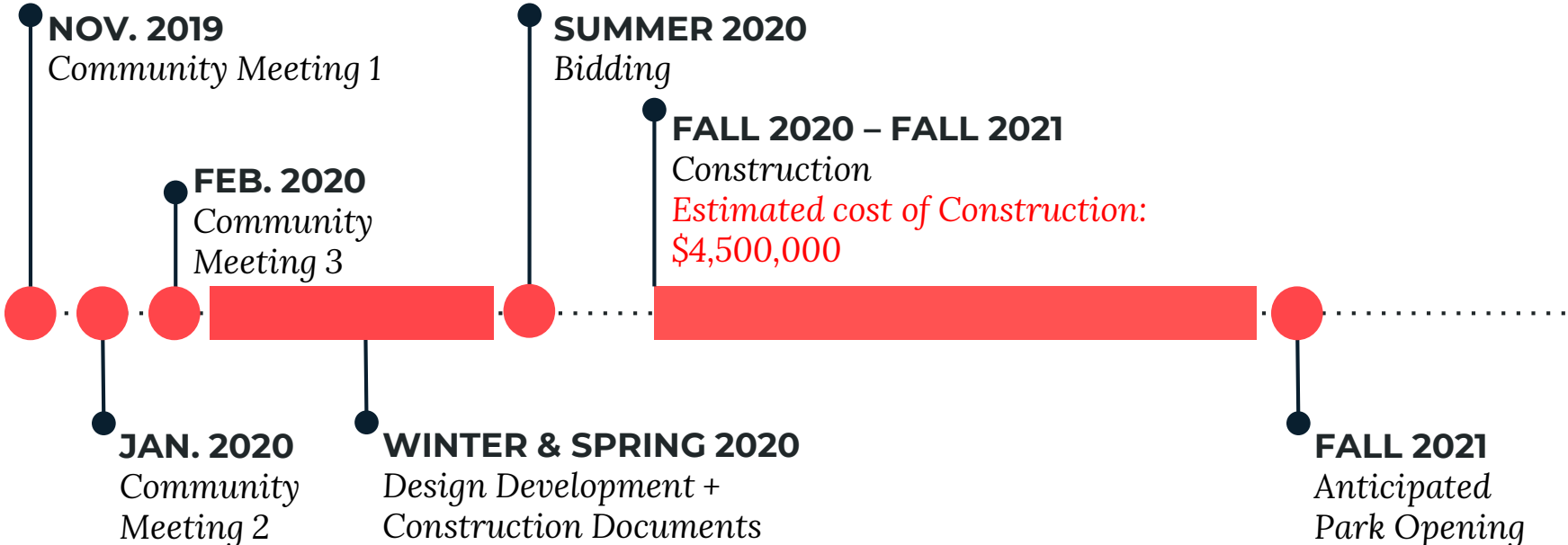
Office of Neighborhood Services

[conor.newman@boston.gov](mailto:conor.newman@boston.gov)



# PROJECT SCHEDULE & FUNDING

---





# CITY OF BOSTON PRIORITIES

---

- Expanding walkable access to parks
- Addressing equity
- Climate resilience
- Health
- Housing and community building



# PARK & RECREATION GOALS

---

- Preserve And Protect Existing Trees
- Expand Usable Park Area
- Improve Universal Access
- Enhance Park Visibility
- Improve Access to Parks
- Design Flexible, Multi-functional Park Spaces



# COMMUNITY MEETING PROCESS

---

- **Meeting #1 (November 2019)**  
*Project Introduction + Overview*
- **Meeting #2 (January 16, 2020)**  
*Design Alternatives*
- **Meeting #3 (Winter 2020)**  
*Preview Final Proposed Design*

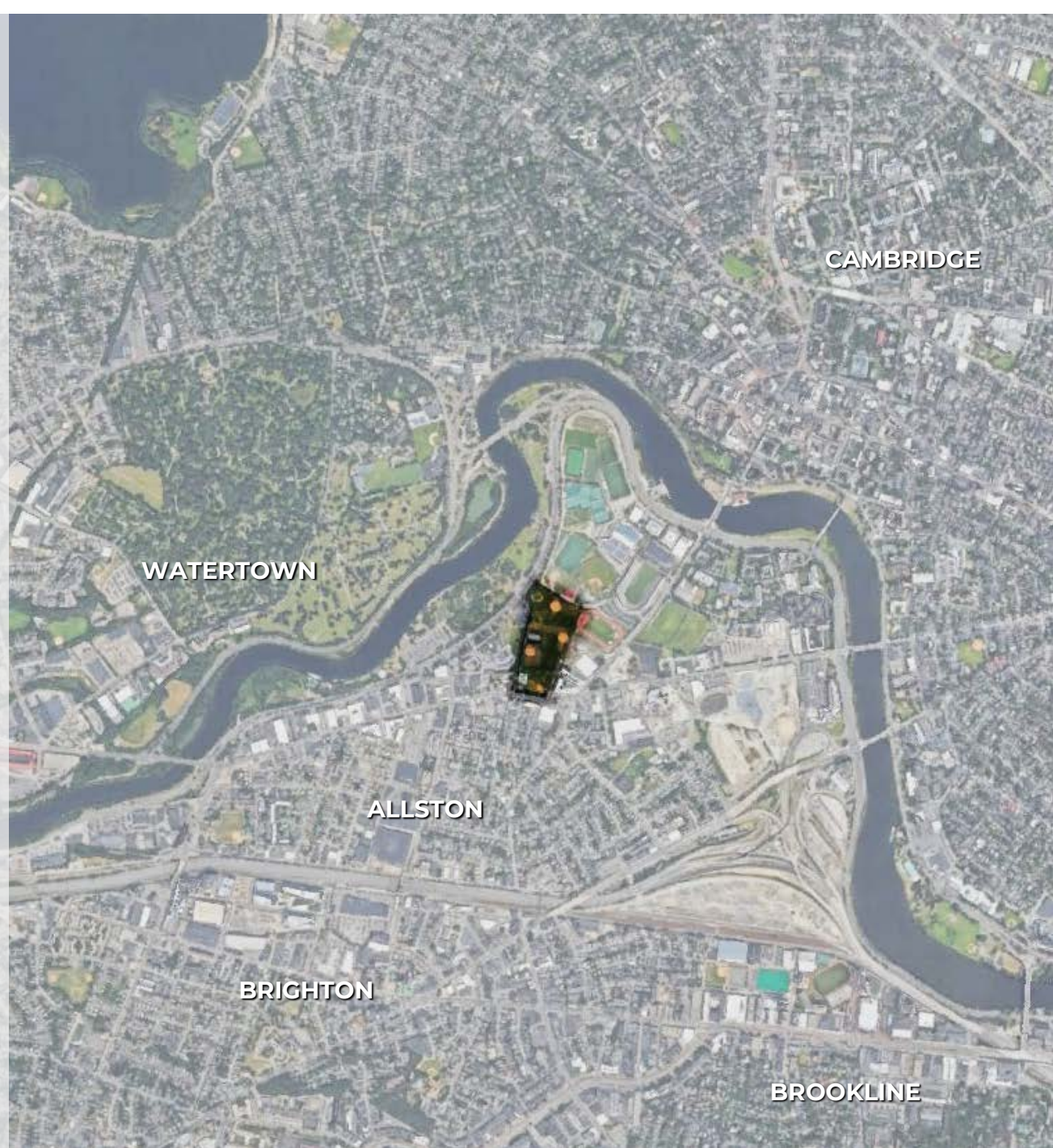




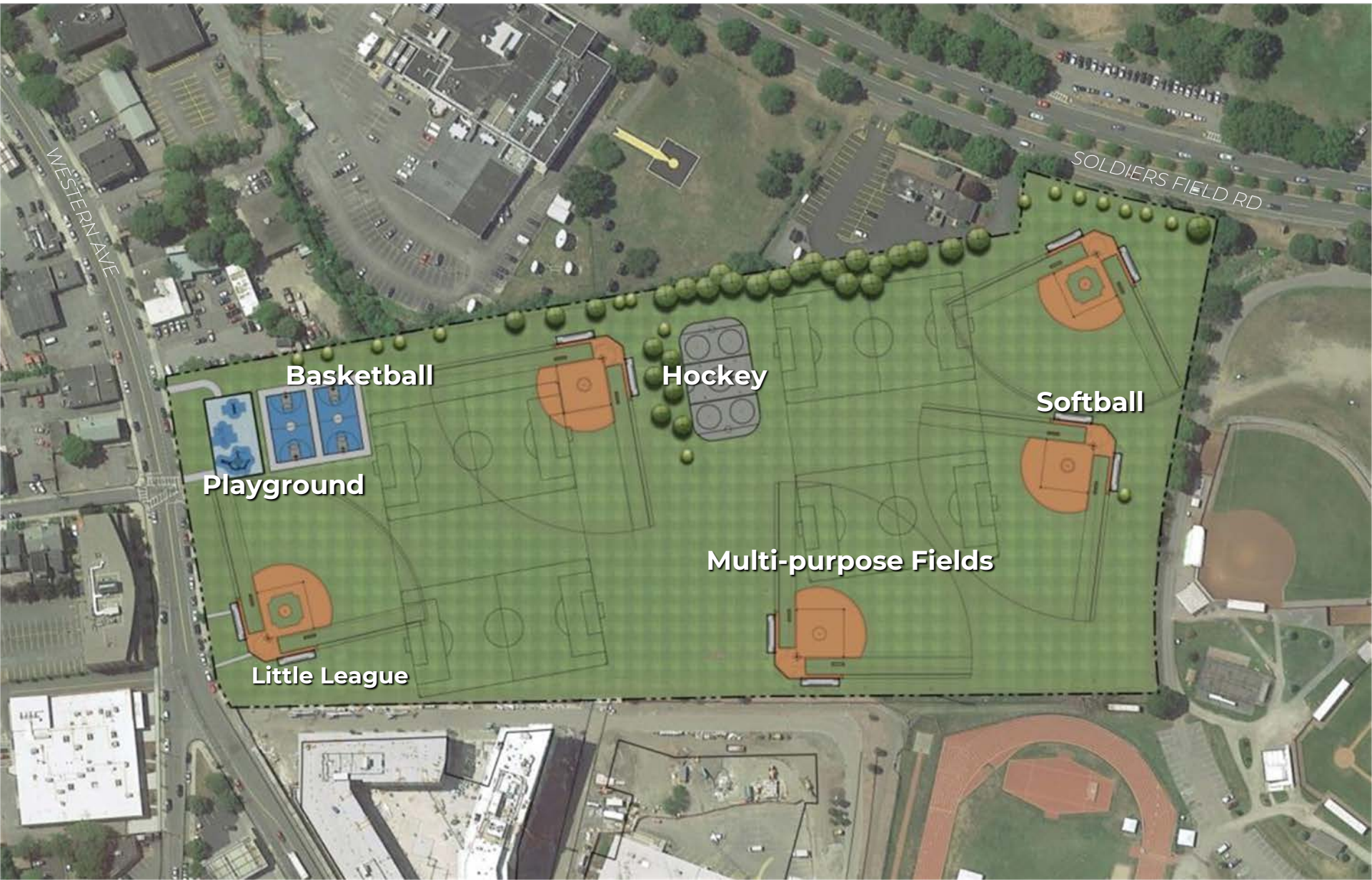
Project Overview: Locus

## **SMITH FIELD**

- William E. Smith Playground
- Established in 1890's
- 14-acre park
- Currently includes athletic courts, hockey/bike polo rink, athletic fields, pump track, tot lot, amphitheater, sculpture and pathways.



# PARK c.2017



**Basketball**

**Playground**

**Little League**

**Hockey**

**Multi-purpose Fields**

**Softball**

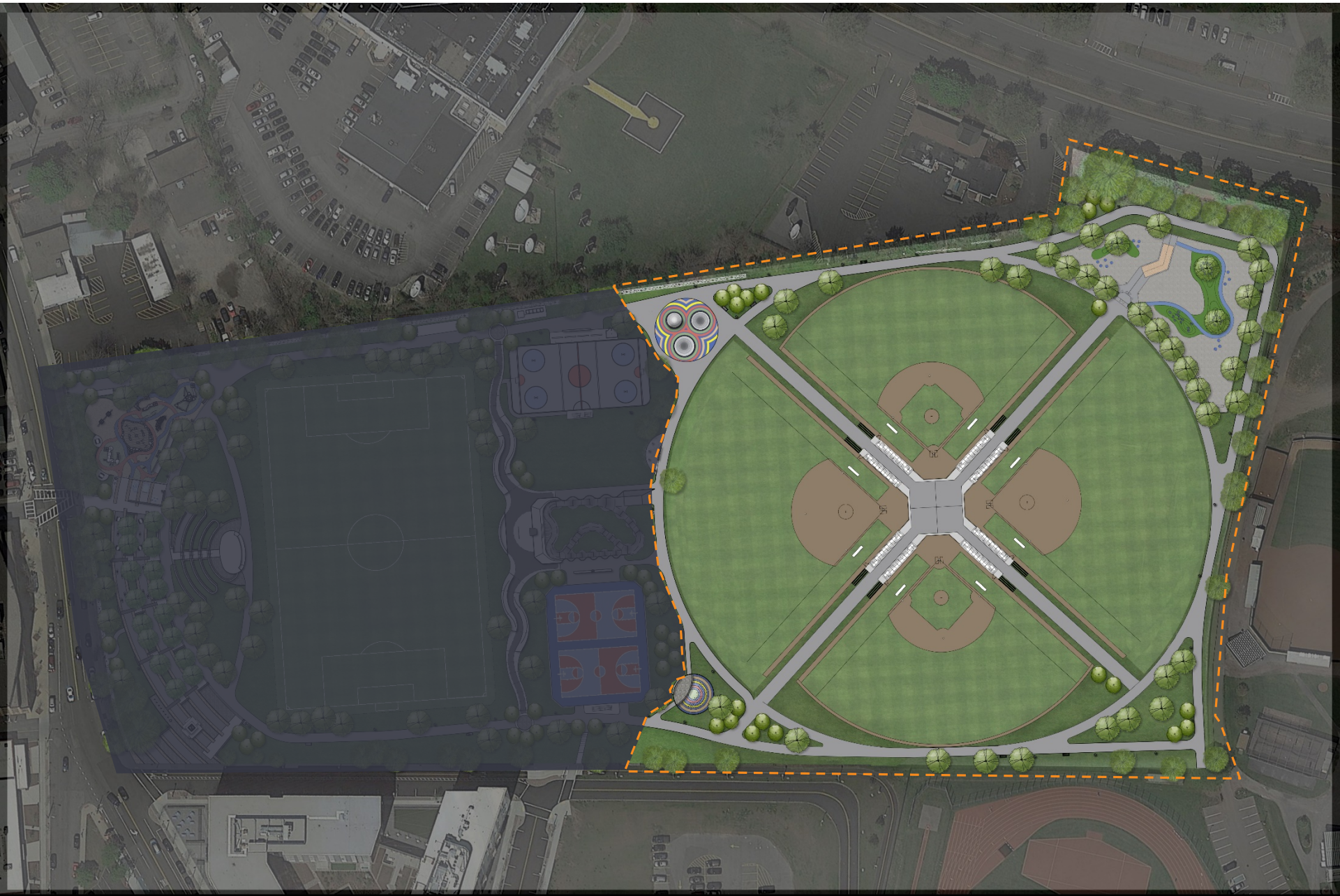
WESTERN AVE

SOLDIERS FIELD RD

# MASTER PLAN



# PHASE 2



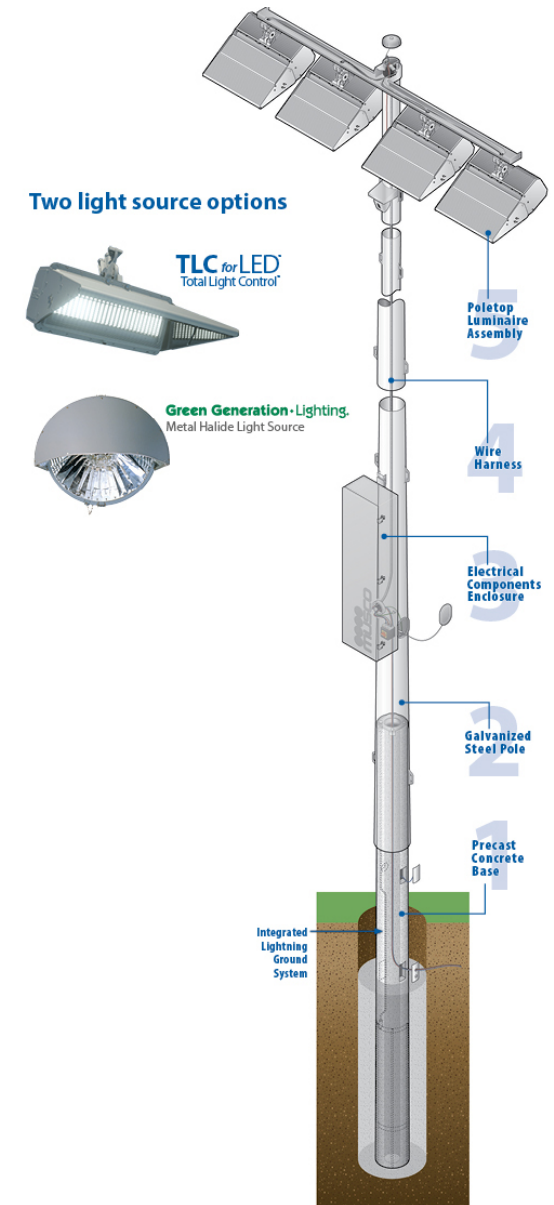
Design

# BALL FIELDS

---



# BALL FIELD AMENITIES



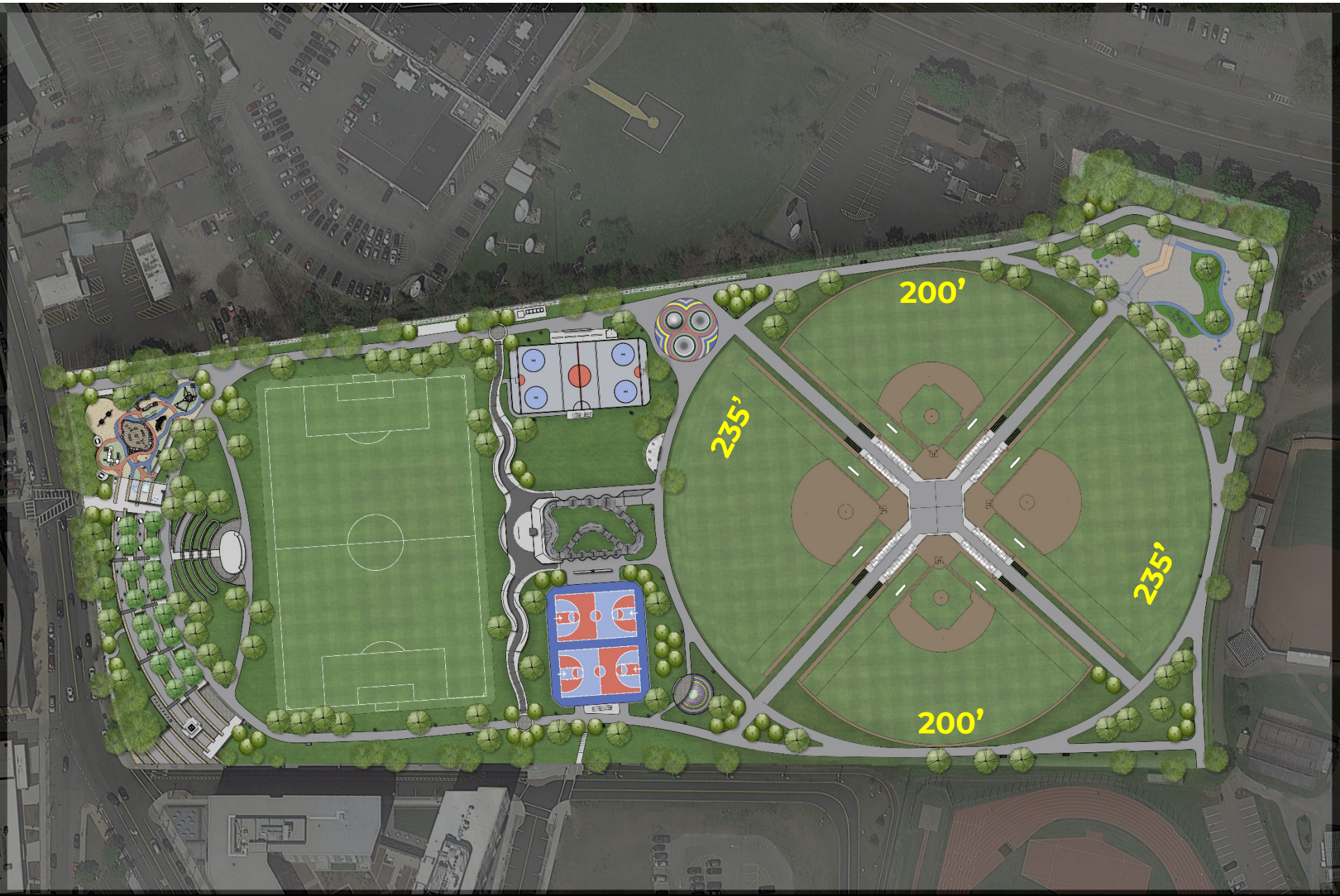
Design

# BALL FIELD AMENITIES



Design

# BALL FIELD ALTERNATIVE LAYOUTS





Design

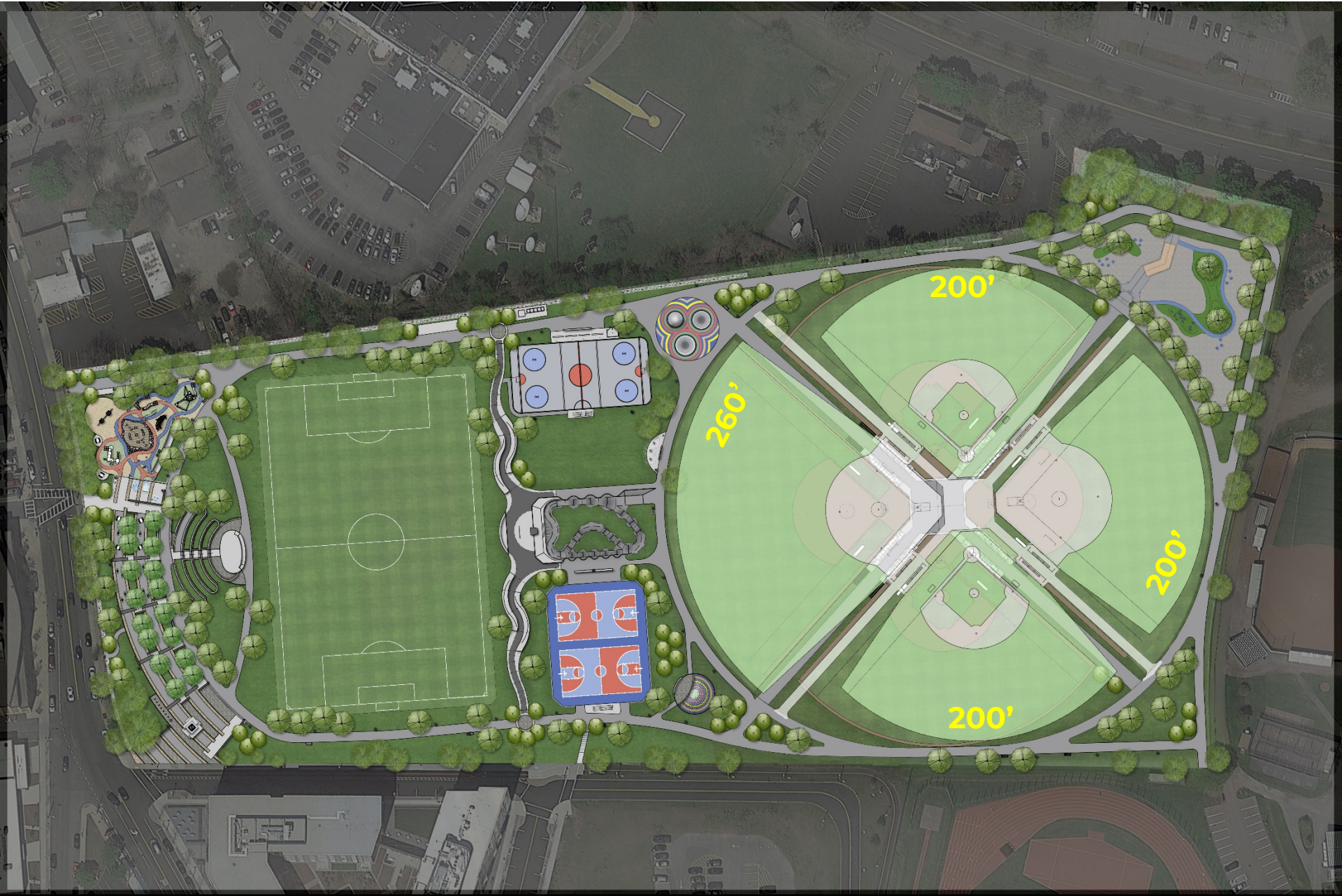
# BALL FIELD ALTERNATIVE LAYOUTS

- Central Gathering Space
- Bleachers
- Drinking Fountain/Bottle Filler
- Shade Structure/trees
- Team Areas



Design

# BALL FIELD ALTERNATIVE LAYOUTS



Design

# DOG PARK

---



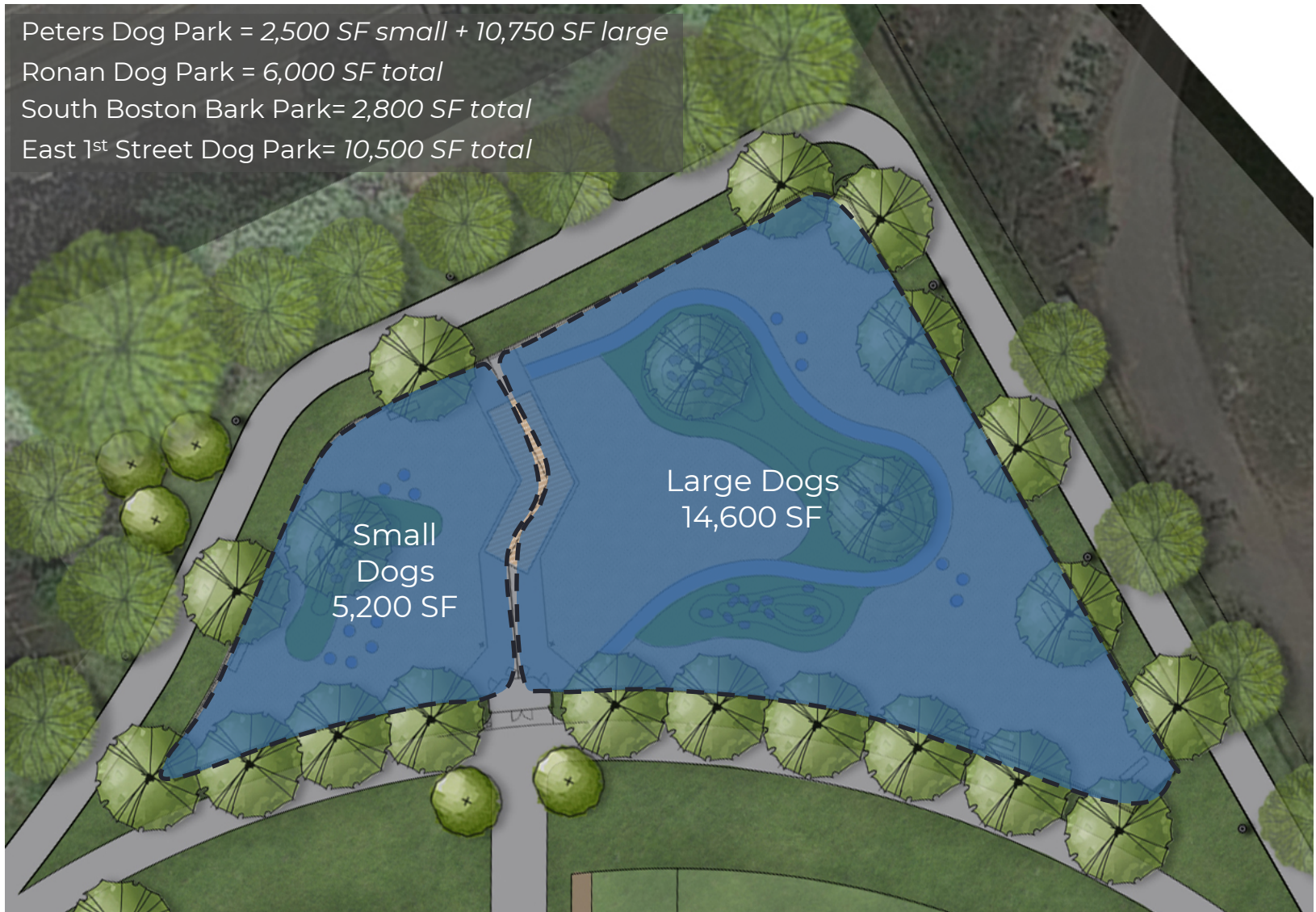
# DOG PARK

Peters Dog Park = 2,500 SF small + 10,750 SF large

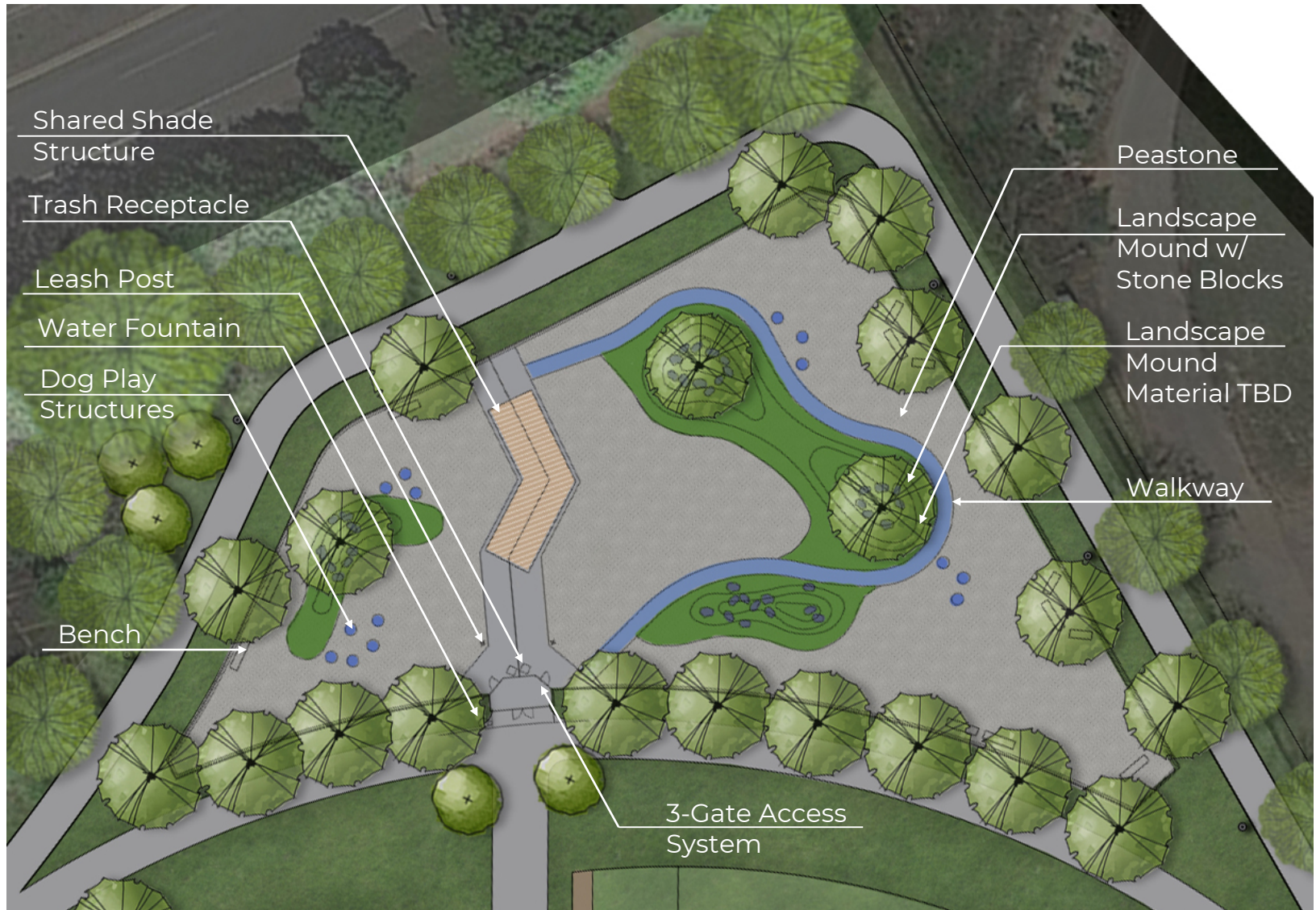
Ronan Dog Park = 6,000 SF total

South Boston Bark Park = 2,800 SF total

East 1<sup>st</sup> Street Dog Park = 10,500 SF total



# DOG PARK



Design

# DOG PARK

---



Design

# DOG PARK



Design

# PLAY ELEMENTS

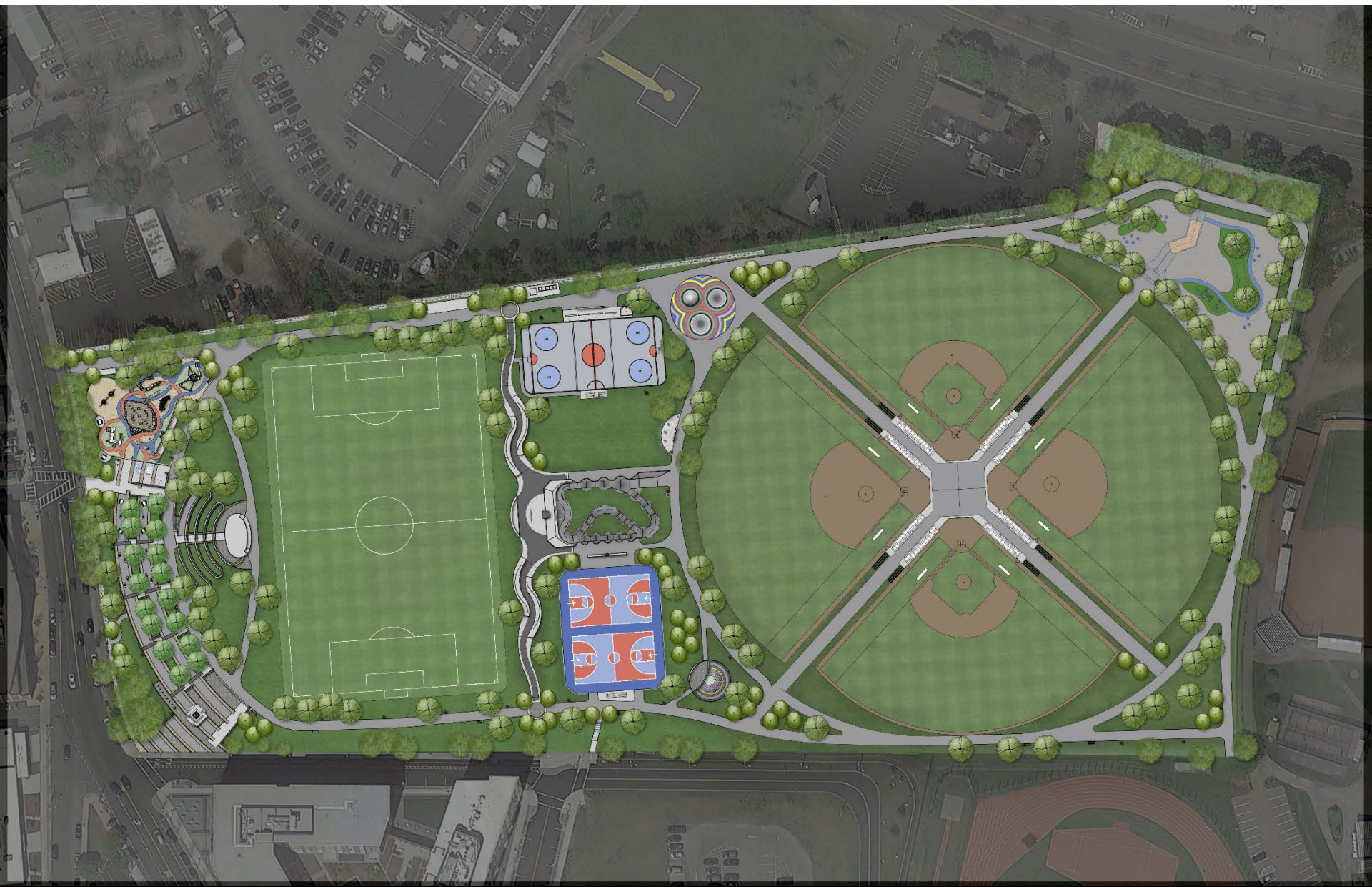
---





# MASTER PLAN

---

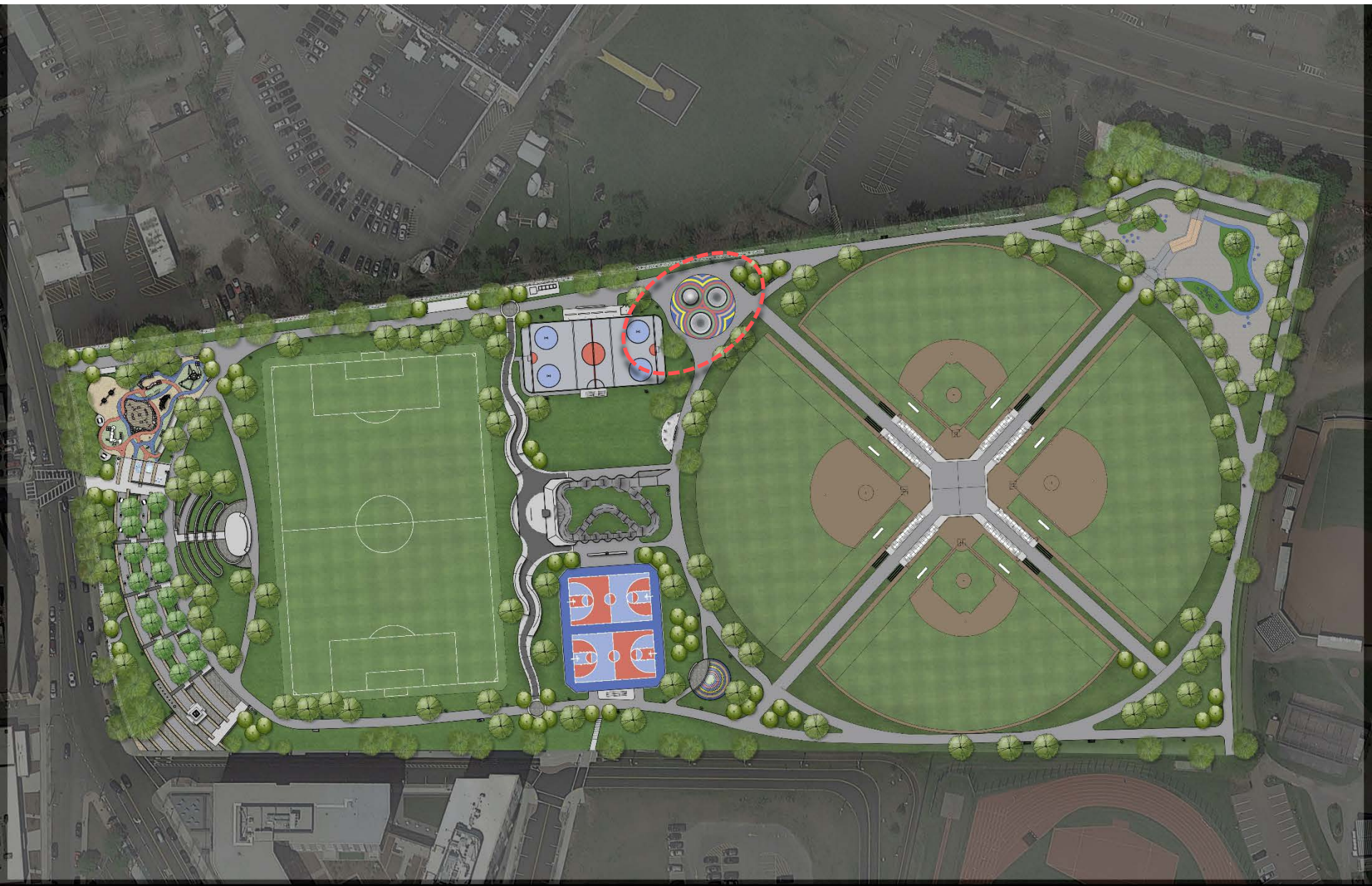


Master Plan

# PLAY & INCLUSIVE DESIGN

Park that is FUN and filled with **energy, excitement, discovery** and **contemplation**

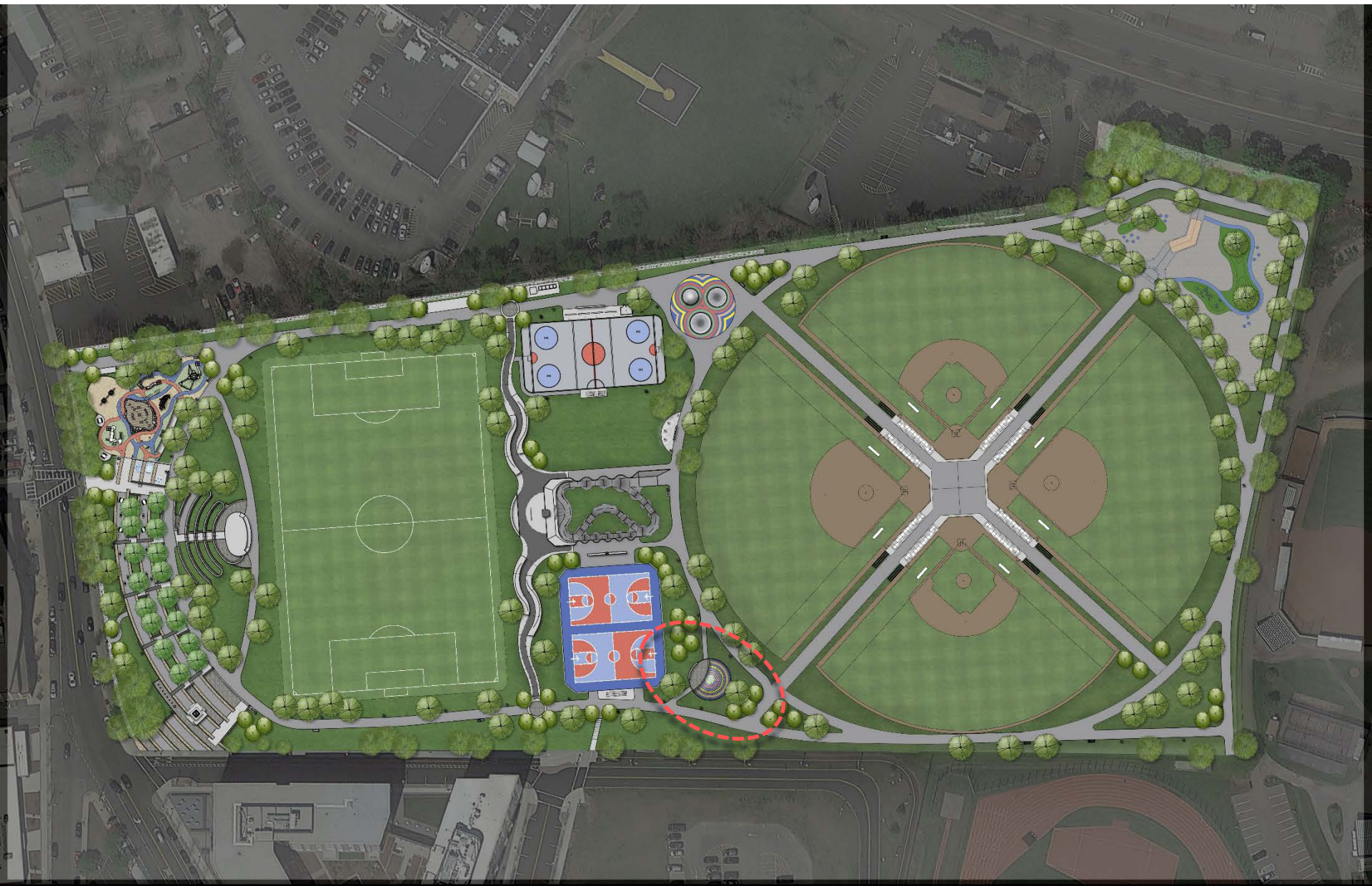




Design

# PLAY ELEMENTS





Design

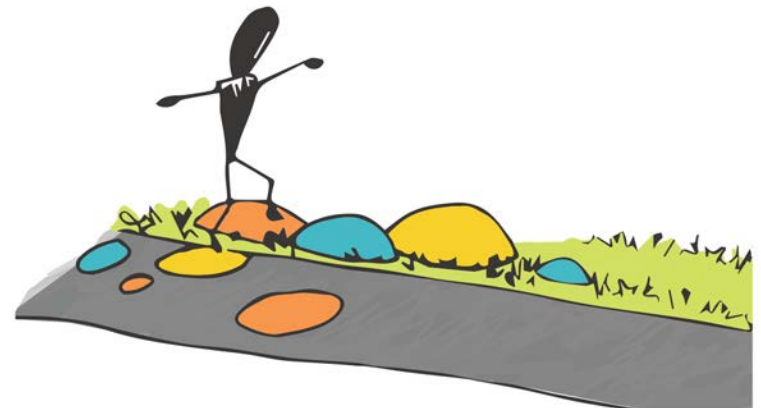
# PLAY ELEMENTS

---



Design

# PLAY ELEMENTS





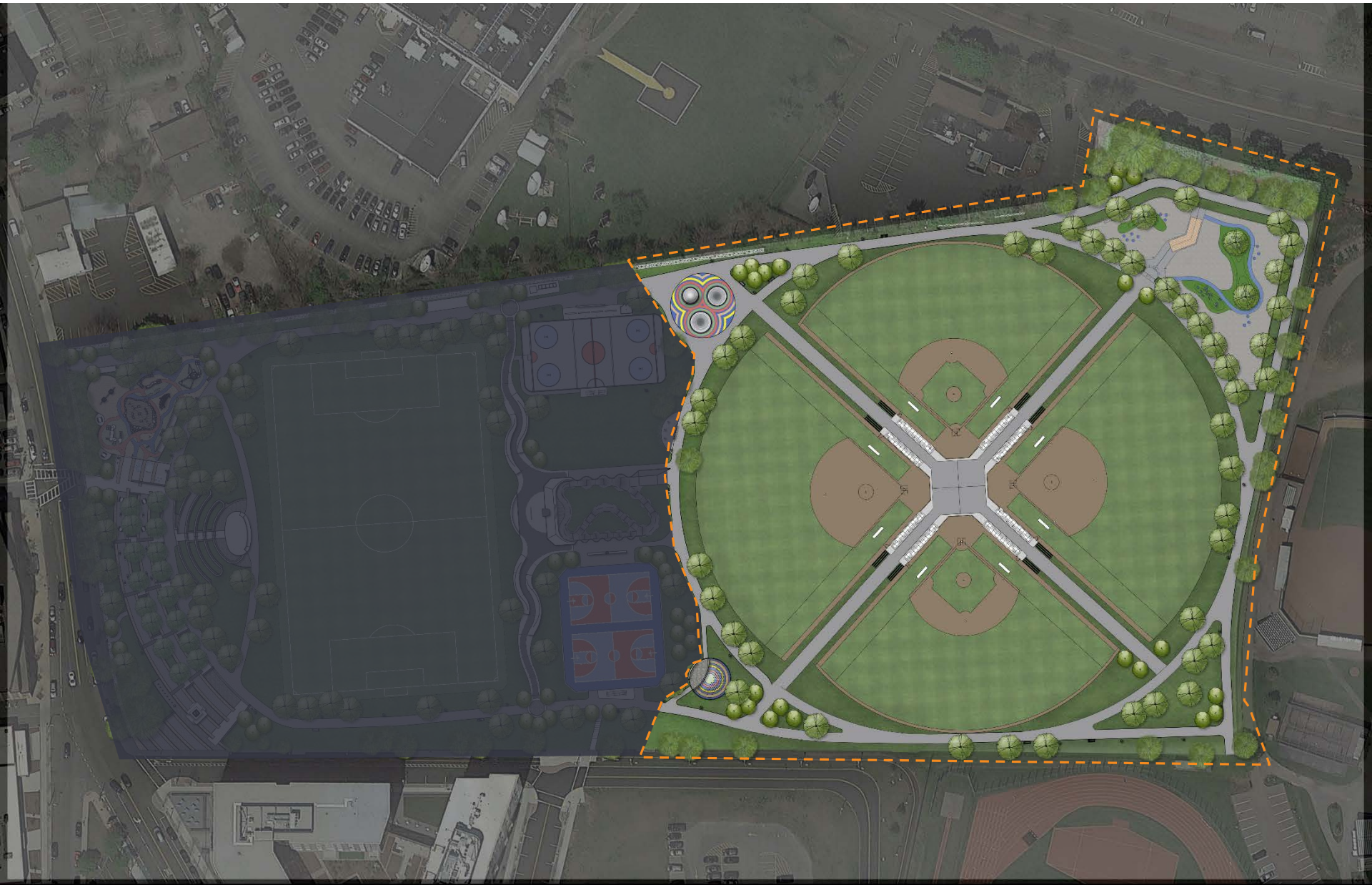
# LISTENING & DISCUSSION

Help us build great parks.  
Let us know what matters to you.



# PHASE 2

---



# THANK YOU!

For questions, maintenance requests or concerns regarding any of our parks contact 311

