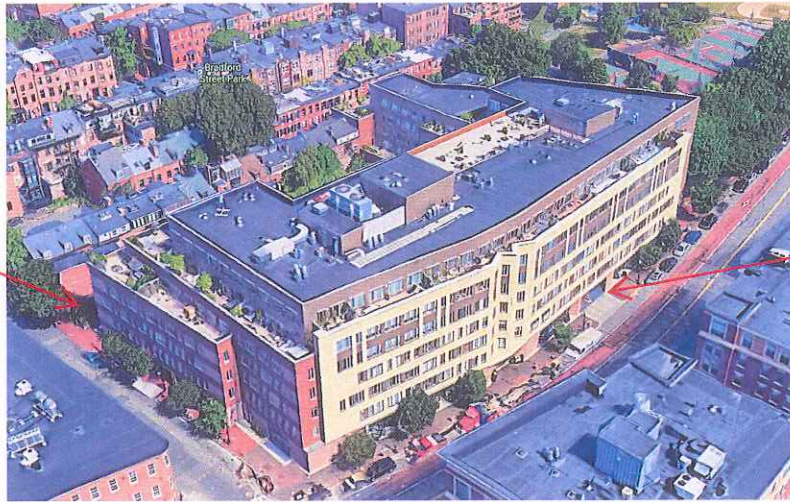


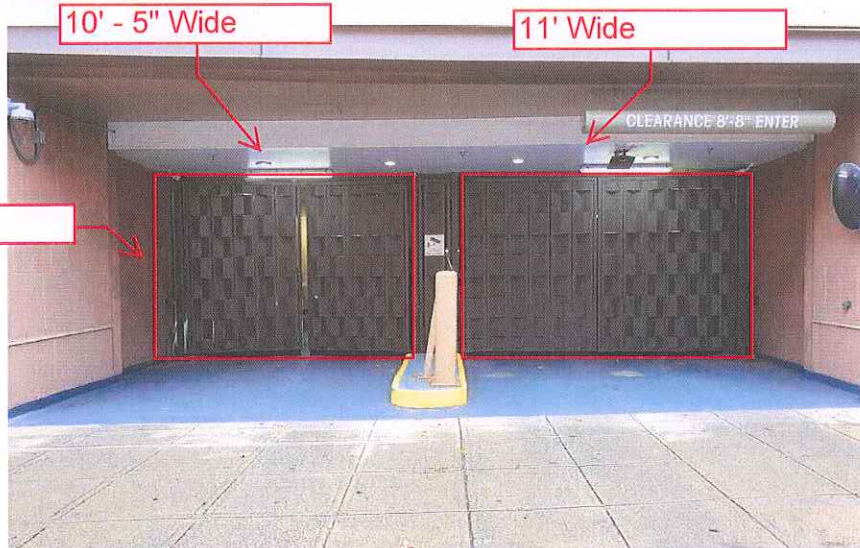
Door Location:

**Service
Garage
Door**

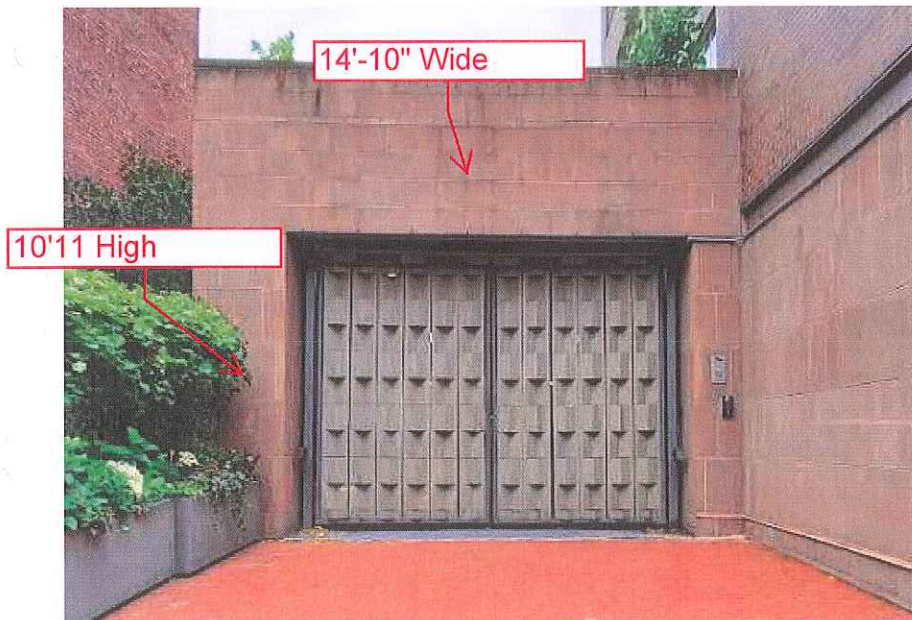


**Resident
Garage
Doors**

Resident Garage Doors:



Service Garage Door:



Addendum C: Proposed Work

Proposed Wilkes Passage Resident Garage Doors

Before



After



Proposed Wilkes Passage Service Garage Doors

Before



After



Collins Overhead Door, Inc.

This is for the
resident garage
doors (2 Rytec
Doors)

404 3rd STREET • EVERETT, MA 02149
TEL: (617) 387-0759 FAX: (617) 389-5967
24 HOUR EMERGENCY SERVICE

QUOTATION

09/26/18 Revised 07/26/19

**WILKES PASSAGE LOFTS
CONDOS**

Tel#: 617-990-2761

**1313 WASHINGTON STREET
BOSTON, MA 02118**

MANAGER@WILKESPASSAGE.COM

Ref#: 168363

Cust#: 33975

Attn: CHRIS

Job: WILKES PASSAGE LOFTS CONDOS

Dismantle and dispose of existing gates

**Furnish and Install (1) 10-5 x 9 and (1) 11 x 9 Rytec low head room Spiral perforated high performance door, the door will be complete with all associated hardware, including 6" double walled aluminum slats, with weather seal, RAL painted finish in color and fully weather stripped
Furnish and (2) 3 phase variable speed, ac drive motors, with dynamic braking, intelligent light safety 4 controllers, with diagnostic display**

Total Cost - \$84,425.00

- **Collins door will install steel tubes on sides and middle of openings, and finish with Rytec Spiral slats to match doors**
- **Customer is responsible for running 3 phase fused disconnects to sides of door openings**
- **Cost to have doors factory bronzed Add \$2,100.00 Total Cost**

- ✓ *Electrical and/or framework cost not included unless otherwise specified.*
- ✓ *Customer is responsible for covering all finished flooring. Collins Door is not responsible for uneven floors or damage to concrete floors.*
- ✓ *To ensure the highest level of safety, 10' of work area at the front of the garage should be cleared of personal property. Additional costs may be incurred if work area is not cleared.*
- ✓ *Custom arch weather-stripping (if required) is not included in total price.*
- ✓ *A \$200.00 delivery fee may apply if the customer requests delivery of doors to job location prior to installation.*
- ✓ *Collins Door is not responsible for non-photo eyed operators (UL325 regulation).*
- ✓ *Cancelled custom orders are subject to 30% restocking fee.*
- ✓ *All new doors should be serviced at least once a year.*
- ✓ *Any legal fees or out of pocket costs due to collection will be the responsibility of the customer.*
- ✓ *Quotation valid for sixty (60) days.*
- ✓ *Postage and Freight not included*

Should you have any questions regarding this quotation, please do not hesitate to call.

To accept quote, please return signed quotation with a 50% deposit, balance to be paid by credit card or check upon completion of work. Thank you!

Chris Baker, Sales Representative

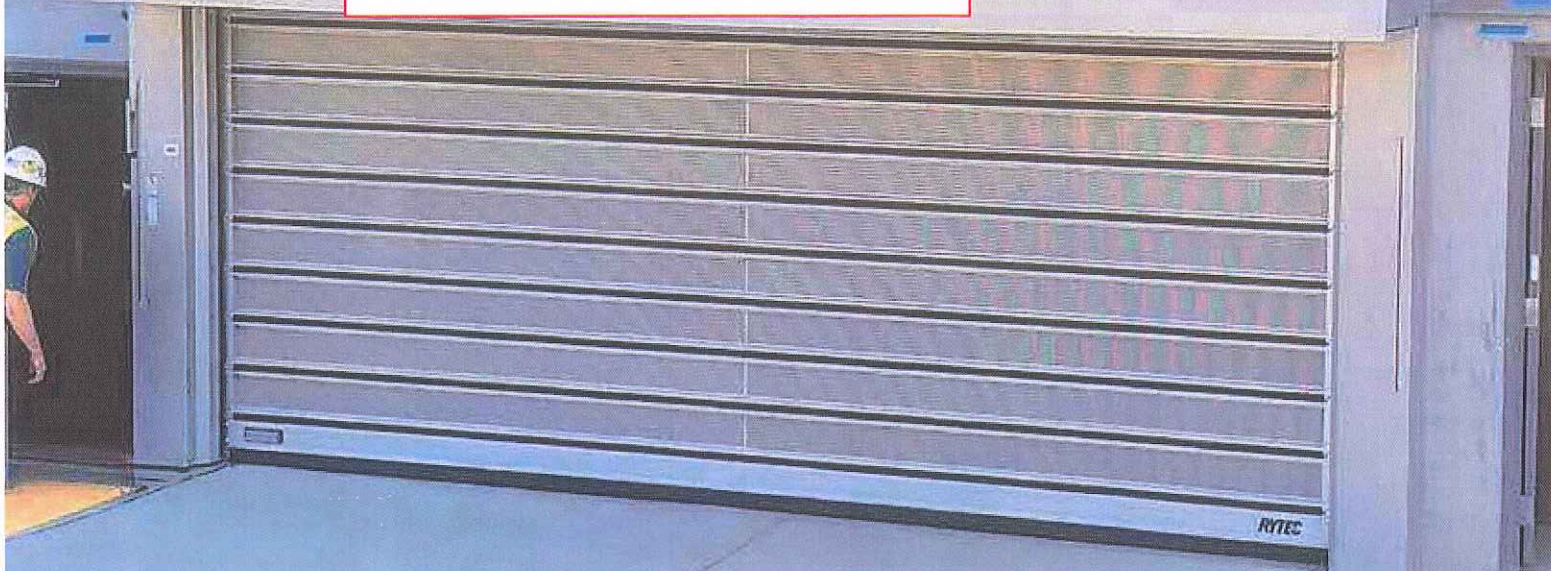
Acceptance of Proposal

RYTEC

HIGH PERFORMANCE DOORS

SPIRAL[®] VT

Product Brochure for Resident Garage Doors HIGH PERFORMANCE VENTILATED DOOR



SPIRAL[®] VT

High Speed, High Cycles and Fresh Air - All in One Door

Engineered for speed - along with high-cycles, air flow, visibility and security - the Spiral VT door (Ventilated) maximizes fresh air and ventilation while reducing pollutants and odors. Innovative perforated slat design allows for air flow and provides security without the need for an additional door.

The Spiral VT is ideal for parking and security-related applications.



Solid Security

- Minimum 1 3/16-inch thick double walled aluminum slats
- Integral rubber weatherseal
- Continuous heavy-duty hinge system

Air Flow

- Perforated slats featuring a round-hole pattern, circulate air and provide ventilation to help maintain a more comfortable work environment

High Speed

- Opening speed of up to 100 inches per second improves traffic flow in fast-paced environments

Ultra Quiet

- Spiral track design features no metal-to-metal contact for remarkably quiet operation

Unparalleled Performance

- Variable speed AC drive system - with soft acceleration and deceleration - smooths out routine stops and starts

Safe and Secure Design

- Ventilated slats are specifically designed with perforations to allow for maximum air flow without compromising security and safety

QUALITY. PERFORMANCE. RELIABILITY.

RYTECDOORS.COM

SPIRAL® VT

HIGH PERFORMANCE RIGID ROLLING DOOR



Size/Dimensions

- Maximum width up to 20'
- Maximum height up to 19'8"

Travel Speed

- Opening speed up to 100 inches per second

Spiral Technology

- Unique, patented design creates no metal-to-metal contact, resulting in less wear and tear on the panel
- Ultra quiet and low maintenance operation
- Utilizes AC drive motor with variable speeds to allow for soft acceleration and deceleration



AC drive motor

Architectural Styling

- Sleek, high-tech aluminum perforated slats enable airflow and partial visibility
- Durable 'Rytec silver' powder coated finish* is UV-stable and resists rust, corrosion and fingerprints



Integrates into many architectural settings

Electrical Controls

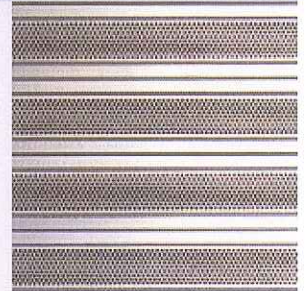
- System 4® controller housed in a NEMA 4x rated enclosure with factory set parameters
- Intelligent processor monitors and controls power consumption
- Advanced self-diagnostics for troubleshooting



System 4 shown with optional rotary disconnect

Ventilated Panel Design

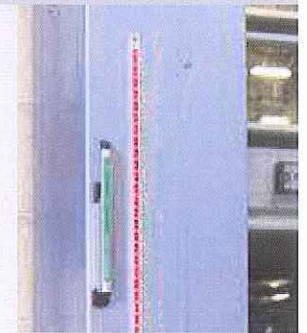
- Ventilated slats combined with solid slats regulate air and light infiltration
- Integral rubber weatherseal between the slats provides a tight weatherseal across the entire panel
- Patented hinge design allows for removal and replacement of single slat without disassembling the door panel



Ventilated slats shown

Safety is Standard

- Advanced³ Light Curtain Safety System
- Pathwatch® Safety Light System
- Electric reversing edge
- Ry-Wi® Wireless System
- Mechanical brake release lever allows door opening in the event of power failure



Pathwatch warning lights and brake release lever shown

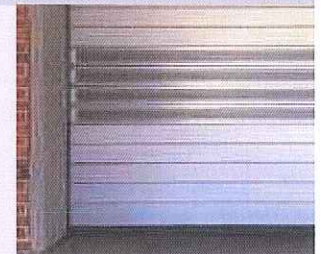
Warranty

- Five-year limited warranty on materials and components
- Two-year limited warranty on electrical components



Options

- Standard solid or vision slats
- Hood and motor covers
- Dual thru-beam photo eyes
- Powder coated finish also available in RAL classic colors or custom match
- Motion, presence, loop or radio controlled door activators



Ventilated and solid slats shown

Standard maximum sizes shown; larger sizes may be available upon request.

*Side columns

American Owned, American Made



Watch All Rytec Testimonials

Specifications subject to change
© 2019 Rytec Corporation LIT052819

RytecDoors.com
888-GO-RYTEC

info@rytecdors.com
P: 262.677.9046 F: 262.677.2058
One Cedar Parkway, PO Box 403
Jackson, WI 53037-0403



Brochure for the Rytec opening Mechanism that will be paired with the doors shown above

L[®] LH
LOW HEADROOM DOOR

High Security, High Speed, Designed for Applications with Low Headroom.

With an opening speed of up to 60 inches per second, the Spiral Low Headroom (LH) door offers the speed you need for high-traffic situations while meeting the low headroom requirements of parking garages and other commercial structures. Rigid, aluminum slat construction eliminates any need for a second overnight security door and the rubber weatherseal provides a tight seal.

Crisp lines give the Spiral LH door a stylish look that's great for all kinds of parking and other commercial, institutional and residential applications. Because its anodized aluminum slats will not corrode, you can count on that look to last for many years even under the worst weather conditions.



High-Security - Rigid, aluminum slat construction and optional, integral locking system provides unparalleled security.

Low Headroom - The low lintel design requires only 11 inches of headroom clearance.

Whisper Quiet - The unique Spiral roll-up design features no metal-to-metal contact, therefore offering whisper-quiet operation.

High Performance - The variable speed AC Drive system with soft acceleration and braking smooths out routine stops and starts, virtually eliminating the clunking gear engagements associated with typical overhead door operation.

Energy Efficient and Tight Seal - Aluminum slats, along with a durable rubber membrane which covers their aluminum connecting hinges, provide a 100% seal against dust pollution, drafts, and inclement weather. Optional insulation simply adds to the energy savings.

RYTEC
CORPORATION

Driving The Door Industry.SM

SPIRAL[®] LH

HIGH PERFORMANCE LOW HEADROOM DOOR

Specifications: Subject to change

Model: Rytec[®] Spiral[®] LH Door

Standard Size: Up to 19 feet 8 inches wide by 16 feet 4 inches high.

Door Panel: Double-walled aluminum slats are 6 inches high by 3/4 or 1-3/16 inches thick. Integral rubber weatherseal between each panel. Optional insulation and clear polycarbonate windows.

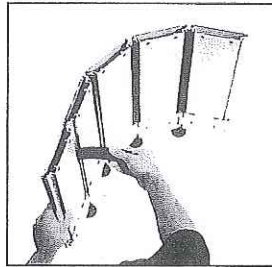
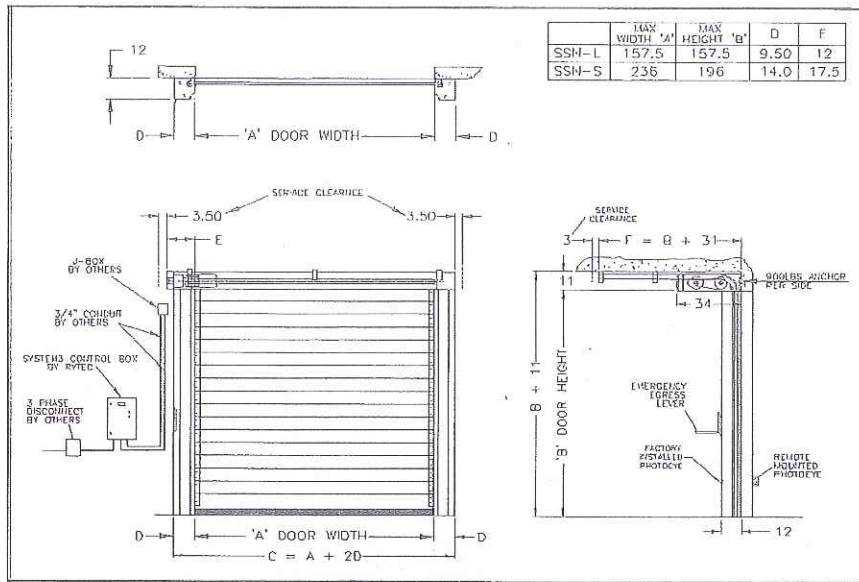
Side Frames: Galvanized steel side frames with full-height weatherseal on both sides to seal against door panel. Dual electric photo eyes are standard. Optional stainless steel package available.

Counterbalance: Up to six extension springs in each side column, depending on the size of the door. The springs assist the motor in opening the door. Mechanical egress lever on side column allows door to be opened in the event of a power failure.

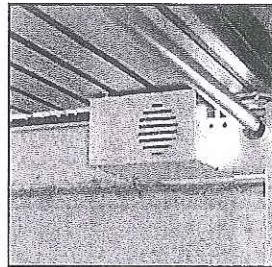
Bottom Bar: Extruded aluminum bottom bar with reliable, electric reversing edge.

Drive System: Three-phase, variable speed AC Drive provides soft acceleration and deceleration. Independent opening and closing speeds provide flexibility to accommodate any application.

Electrical Controls: System 3[®] controller housed in a NEMA 4 rated enclosure with factory set parameters. Self-diagnostic features and a two-line, 32-character LCD display in English, Spanish or French provide quick and straightforward installation and control adjustments. Programmable inputs and outputs accommodate special control applications without the need for additional electrical components.



Rubber Weatherseal
Integral rubber weatherseal between anodized aluminum slats is replaceable for easy maintenance.



Compact Motor
Compact, variable speed motor with soft acceleration and braking for smooth starts and stops. Shown with optional motor cover.



System 3 Controller
Makes programming and troubleshooting easier, more flexible and more precise than ever.

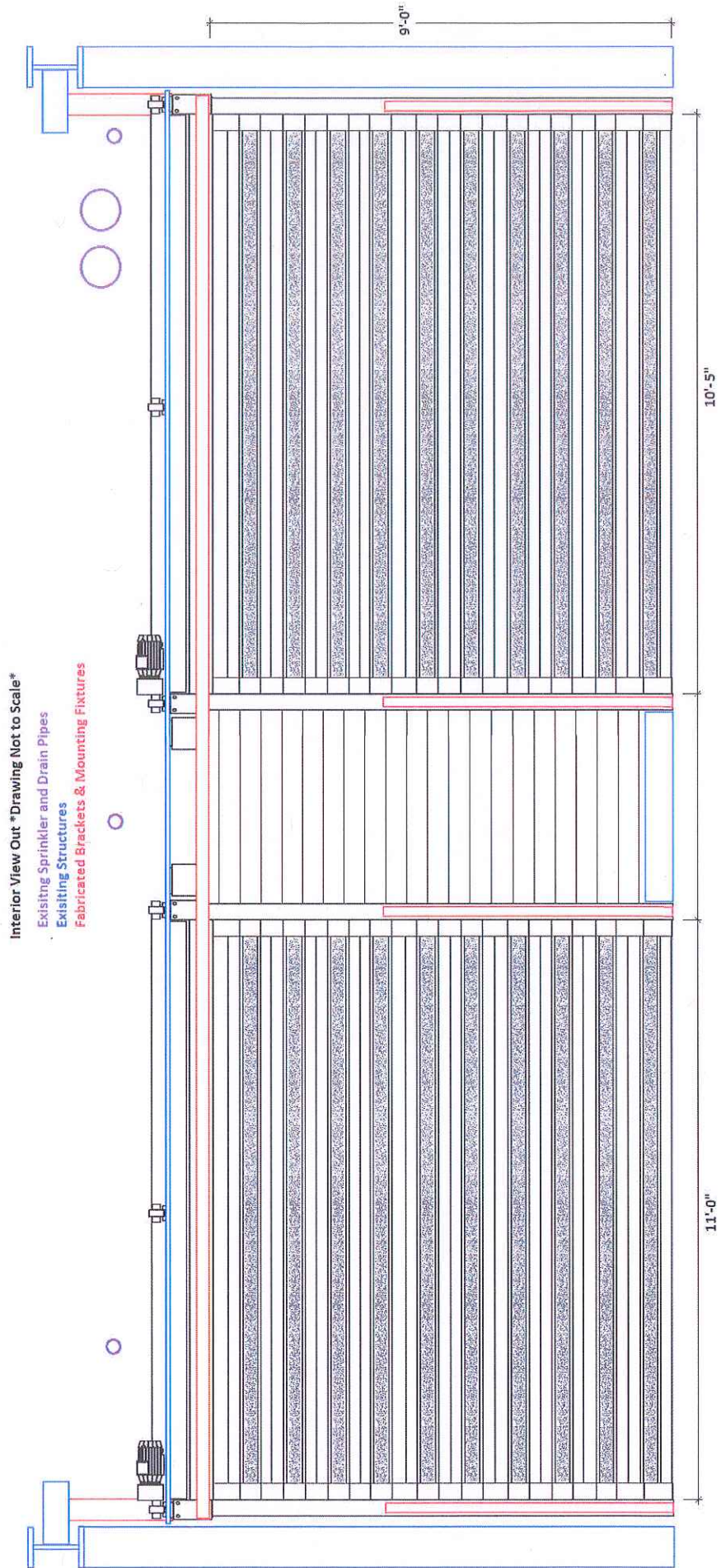
Travel Speed: Opens at up to 60 inches per second.

Warranty: One-year limited warranty on materials and workmanship.

RYTEC
CORPORATION

One Cedar Parkway
Jackson, WI 53037-0403
Phone: 262-677-9046
Fax: 262-677-2058
Toll Free: 888-GO-RYTEC
Email: info@rytecdoors.com
Web: www.rytecdoors.com

This is a drawing which shows the new resident garage doors, with dimensioning (VIEW FROM INTERIOR)



DIMENSIONAL VARIABLES
DRAWING NOT TO SCALE. DIMENSIONS IN INCHES

DOOR NO.	A	B	C	F	M	K	H
1 DOOR	125	108	151	119	108	72	118

MILLIMETERS
ACTUAL DOOR SIZE IS PRODUCED IN MILLIMETERS
REQUESTED DOOR SIZE IS CONVERTED TO MILLIMETERS
AND ROUNDED UP TO THE NEAREST 10MM

ELECTRICAL OPTIONS

- 460v - 3ph
- 575v - 3ph (\$)
- 230v/208v - 3ph (INCLUDES NEMA 4 METAL ENCLOSURE WITH 575/460 TRANSFORMER)
- 230v/208v - 1ph

STANDARD FEATURES

1. SIDE COLUMN AND HEAD CONSOLE POWDER COATED RYTEC SILVER.
2. INTELLIGENT LIGHT CURTAIN SYSTEM IN DOOR LINE TO 6"-0" ABOVE FINISHED FLOOR.
3. VARIABLE DOOR OPENING SPEED: UP TO 60"/SEC.
4. PROGRAMMABLE UPPER AND LOWER LIMITS.
5. NEMA 4X SYSTEM 4 CONTROL BOX (6.5"x16.5").
6. BRAKE RELEASE LEVER ON SIDE COLUMN.
7. ELECTRICAL FAIL SAFE REVERSING EDGE.
8. ONE (1) SET PATHWATCH LEDS.

UPGRADE OPTIONS

- BRAKE RELEASE LEVER
- SIDE COLUMN REMOTE MOUNT (\$) BOTH (\$)
- RIGHT HAND DRIVE
- ROTARY DISCONNECT (\$)
- SELECTOR SWITCH ON CONTROL BOX (\$)
- FUNCTION:
- PHOTOEYES IN LIEU OF LIGHT CURTAIN (\$)

ACTIVATION OPTIONS (\$)

- DUAL LOOP CONTROLLER
- RADIO CONTROL ROVR (INCLUDE MIN 2 XMIT)
- PULL CORDS
- MOTION DETECTOR
- PRESENCE DET.
- MOTION/PRESENCE
- 1 BTN TRANSMITTER
- 2 BTN TRANSMITTER
- 4 BTN TRANSMITTER

OPTION NOTES

- (\$\$) = PRICING CHANGE IF NOT INCLUDED IN QUOTE
- FULL VENTILATED PANEL ASSEMBLY

PLEASE SPECIFY VOLTAGE

RAL PAINT #:
18 SLAT PAINT #:

EXIT

RYTEC CORPORATION
ONE CEDAR PARKWAY, JACKSON, WI 53037-0403

APPROVAL DRAWING

SPIRAL LH-FULL VENTILATED, STN-L
FOR DOOR WIDTH UP TO 13'-1", HEIGHT UP TO 13'-1"

CUSTOMER: **313 WASHINGTON STREET**
LOCATION: **BOSTON, MA**

DATE: 8/1/19
DRAWING NO.: 715-02T
REV: CMC

FORMULAS

- F = (B + 30.50); FOR B < 91
- F = (B + 11.00); FOR B >= 91
- M = (B + 20.00); FOR B < 91
- M = B; FOR B >= 91
- K = NOT REQ'D; FOR B < 99
- K = 72.00; FOR B >= 99

FINAL APPROVAL SIGNATURE

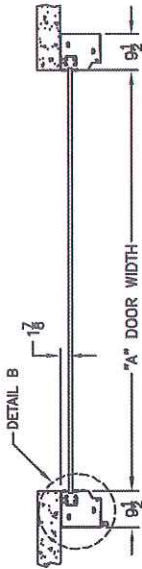
FABRICATION CAN PROCEED ACCORDING TO THE SPECIFICATION SHOWN EXCEPT AS NOTED.

APPROVED BY:

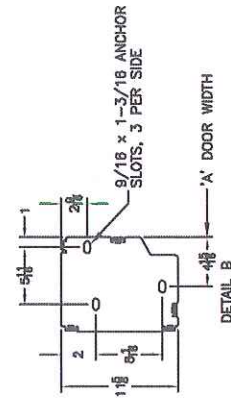
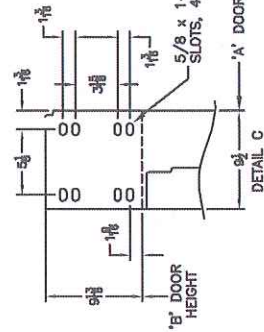
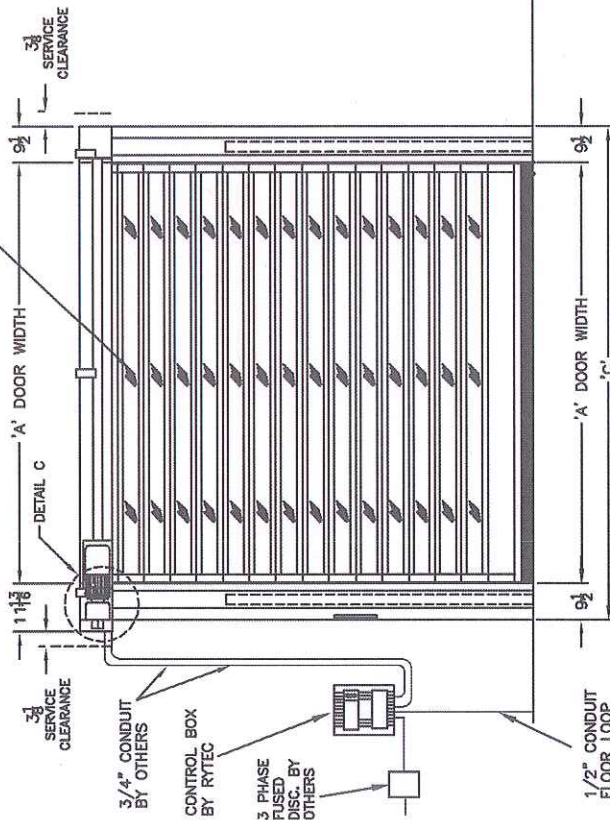
PRINT NAME:

SIGNATURE:

DATE:



FULL VENTILATED SLAT ASSEMBLY



REV	DESCRIPTION	DATE	BY

This is for the
installation of the
service garage
door

Collins Overhead Door, Inc.

404 3rd STREET • EVERETT, MA 02149
TEL: (617) 387-0759 FAX: (617) 389-5967
24 HOUR EMERGENCY SERVICE

QUOTATION

09/12/19

WILKES PASSAGE LOFTS CONDOS
1313 WASHINGTON STREET
BOSTON, MA 02118

Tel#: 617-990-2761
MANAGER@WILKESPASSAGE.COM
Ref#: 180644
Cust#: 33975

Attn: CHRIS
Job: 1313 WASHINGTON ST, BOSTON

*Dismantle and dispose of exit gate
Furnish and Install (1) 14-10 x 11 Cornell esd-10 Perforated Screen guard, exterior
mounted Roll up door. The door will be equipped with all associated hardware,
angle mount guides, spring tube counter-balance assembly, custom RAL power
coat in color and fully weather-stripped
Furnish and Install (1) Cornell 115 volt MGH gearhead operator with photo eyes
and interior control station*

Total Cost - \$10,750.00

- Customer is responsible for electrical power wiring for operator
- Cost to Install (1) 13-9 x 9-4 between the jamb, interior mount roll up and motor is **\$9,650.00**

- ✓ Removal and disposal fee for 1 door is \$50.00; 2 doors is \$80.00.
- ✓ All new doors should be serviced at least once a year.
- ✓ Electrical and/or framework cost not included unless otherwise specified.
- ✓ Customer is responsible for covering all finished flooring. Collins Door is not responsible for uneven floors or damage to concrete floors.
- ✓ To ensure the highest level of safety, 10' of work area at the front of the garage should be cleared of personal property. Additional costs may be incurred if work area is not cleared.
- ✓ Custom arch weather-stripping (if required) is not included in total price.
- ✓ A \$200.00 delivery fee may apply if the customer requests delivery of doors to job location prior to installation.
- ✓ Collins Door is not responsible for non-photo eyed operators (UL325 regulation).
- ✓ Cancelled custom orders are subject to 30% restocking fee.
- ✓ Any legal fees or out of pocket costs due to collection will be the responsibility of the customer.
- ✓ Quotation valid for sixty (60) days.
- ✓ Postage and Freight not included

Should you have any questions regarding this quotation, please do not hesitate to call.
To accept quote, please return signed quotation with a 50% deposit, balance to be paid by credit card or check upon completion of work. Thank you!

Chris Baker, Sales Representative

Acceptance of Proposal

These are drawings from Collins Overhead Door showing the Service garage door

QUANTITY & MARK:
(1) 002

MATERIAL & FINISH:
Curtain - Galvanized steel, phosph coating, color Verify powder
Bottom Bar - Aluminum, polyester
Guides - Structural steel, polyester
Hood - Galvanized steel, phosph coating, color Verify powder
Plain Steel - Polyester powder coat

BOTTOM BAR LOCKING:

ELECTRICAL EQUIPMENT LIST:

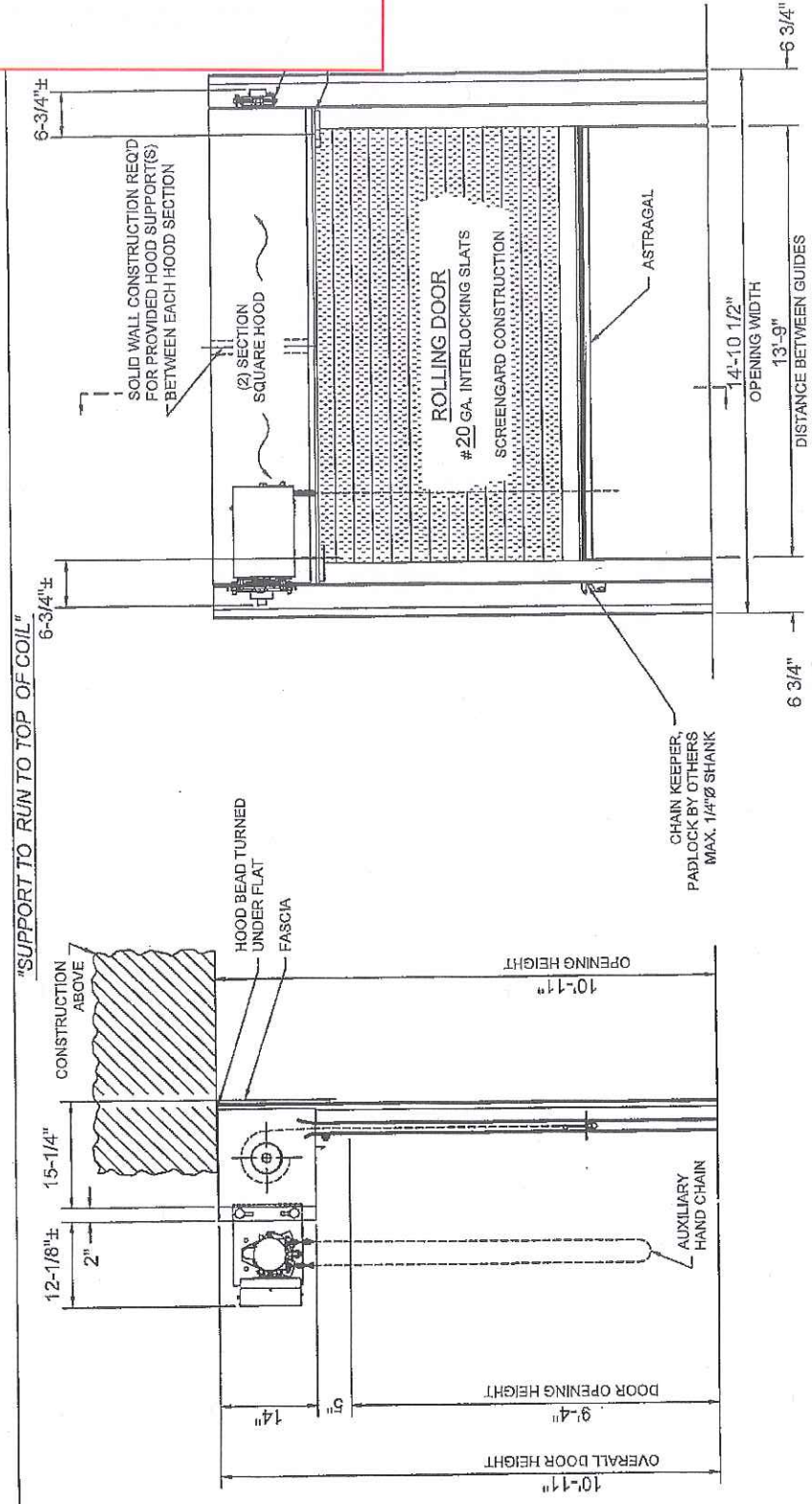
MOTOR SPECIFICATIONS:
1/3 HP motor to include a TENV motor, reversing magnetic controller in NEMA 1 enclosure, planetary gearbox for drive reduction, electric brake and an auxiliary chain operator. Includes UL listed thermal overload protection, rotary limit switches, safety edge circuit and transformer with 24 volt control secondary, and delay on reverse. Pre-wired to a terminal block using color coding of the wires to facilitate troubleshooting.

Between the jamb
Interior mount

CURRENT CHARACTERISTICS:

120 V 1 PH 60 HZ

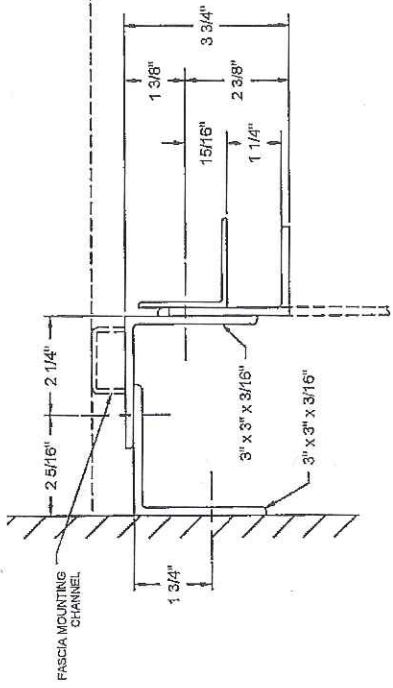
Electrical current must be verified in writing before job is released for manufacture; current verified and found correct. Operator bracket bracing required, unless operator is wall mounted.
Signed:



07-03-2019		PRODUCT CODE:	E 01378761 002 A	
MITR_STDL	MBI 5P 20GC	AGENT: COLLINS OVHD DOORS		
ORIGINAL DRAWING		CONTRACTOR: COLLINS OVHD DOORS		
REVISION		ARCHITECT:		
#	DATE	BY	JOB: MGH MOTOR OPERATED ROLLING DOOR	
	09/12/19	AO2-1	WILKES PASSAGE	



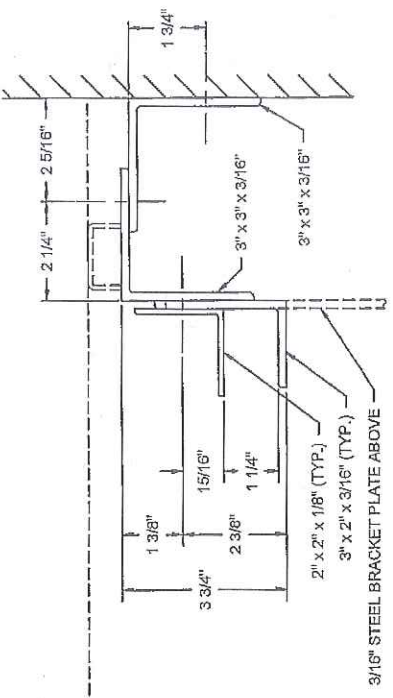
NOTE: Wall construction detail shown is for illustrative purposes only, does not imply compliance with building requirements, and must meet architectural specifications to properly support product. Products designed with wind load requirements must be properly fastened to structural members. See drawings for details. Consult local building code for any special requirements. Consult local authority having jurisdiction requirements.



GA0471 - 3 3/4"

WALL FASTENERS:
 AT 24" ON CENTER
 - Ø3/8" x 3-1/2" SIMPSON WEDGE-ALL,
 MIN. 3000 PSI CONCRETE REQ'D
 MIN. EMBEDMENT DEPTH - 2-5/8"

ASSEMBLY FASTENERS:
 AT 24" ON CENTER
 - Ø3/8" x 1-1/2" HEX HEAD CAP SCREW, GR. 5
 - HEX HEAD NUT, GR. 5
 - HARDENED FLAT WASHERS

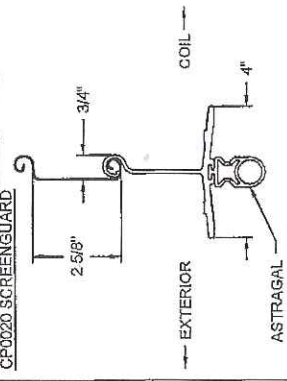


GA0471 - 3 3/4"

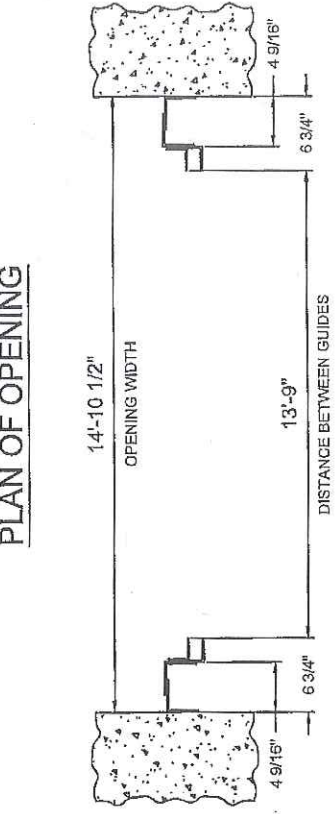
WALL FASTENERS:
 AT 24" ON CENTER
 - Ø3/8" x 3-1/2" SIMPSON WEDGE-ALL,
 MIN. 3000 PSI CONCRETE REQ'D
 MIN. EMBEDMENT DEPTH - 2-5/8"

ASSEMBLY FASTENERS:
 AT 24" ON CENTER
 - Ø3/8" x 1-1/2" HEX HEAD CAP SCREW, GR. 5
 - HEX HEAD NUT, GR. 5
 - HARDENED FLAT WASHERS

BOTTOM BAR / SLAT DETAIL

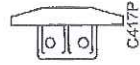


PLAN OF OPENING



INSTALLERS NOTE:
 MAINTAINING FACTORY SET GUIDE GAPS IS CRITICAL TO THE PROPER OPERATION OF THE DOOR AND ITS ABILITY TO WITHSTAND THE DESIGNED WINDLOAD!

ENDLOCK DETAIL
 C417P MOLDED NYLON ENDLOCK ON ALTERNATING SLATS WITH 2 x 1/4" RIVETS



04-09-2018	PRODUCT CODE:	MBI 5P 20GC
QS1_375		

MODEL #:	ESD10	JOB #:	E 01378761.002 B
AGENT:	COLLINS OVHD DOORS		
CONTRACTOR:			
ARCHITECT:			

SERVICE DOOR GUIDE ASSEMBLY
 3-3/4" PACKOFF
 WILKES PASSAGE



#	REVISION	DATE	BY
-	ORIGINAL DRAWING	09/12/19	AD21