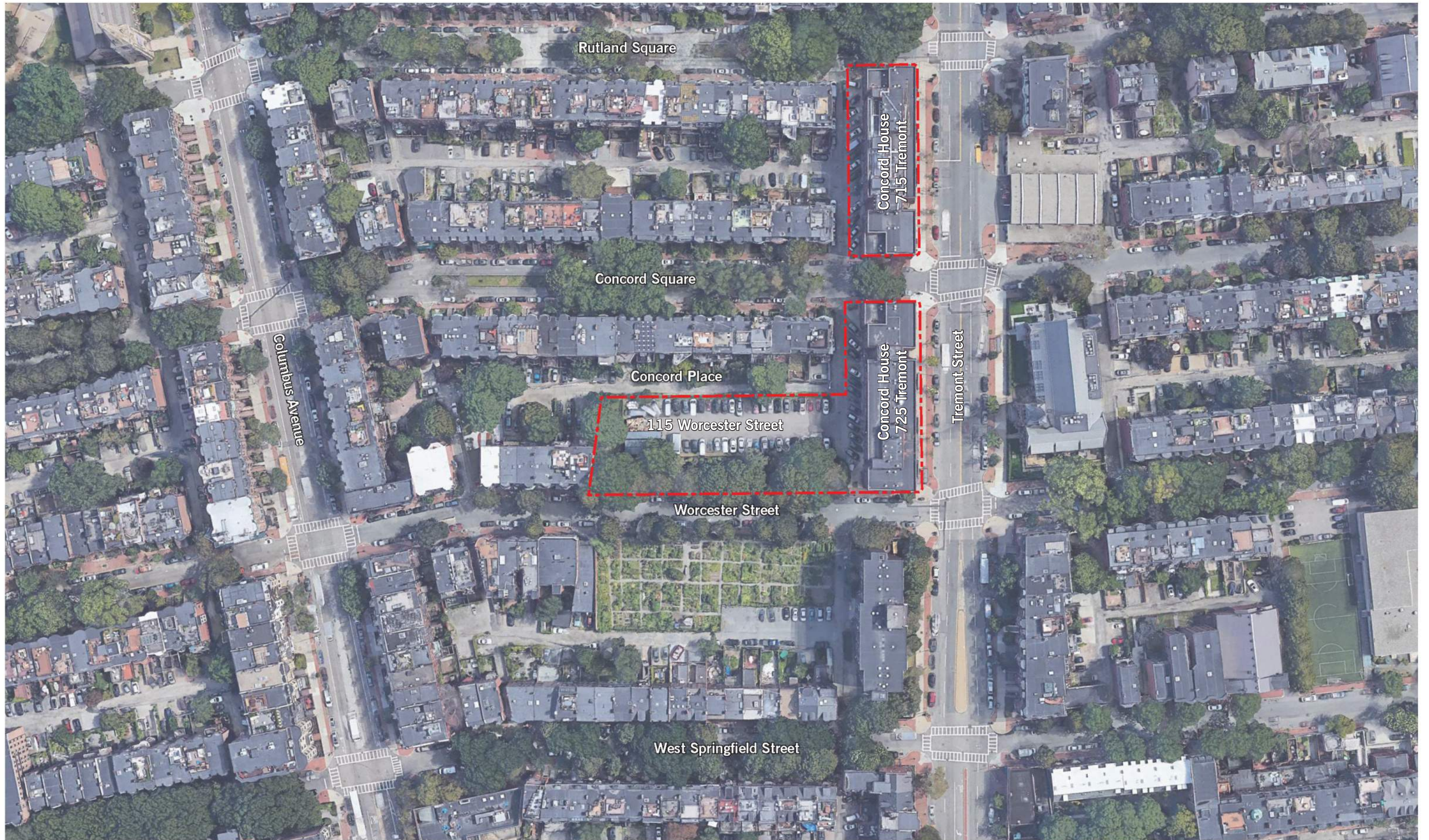




# 715 - 725 Tremont Street / 115 Worcester Street

December 3, 2019





715 - 725 Tremont Street / 115 Worcester Street

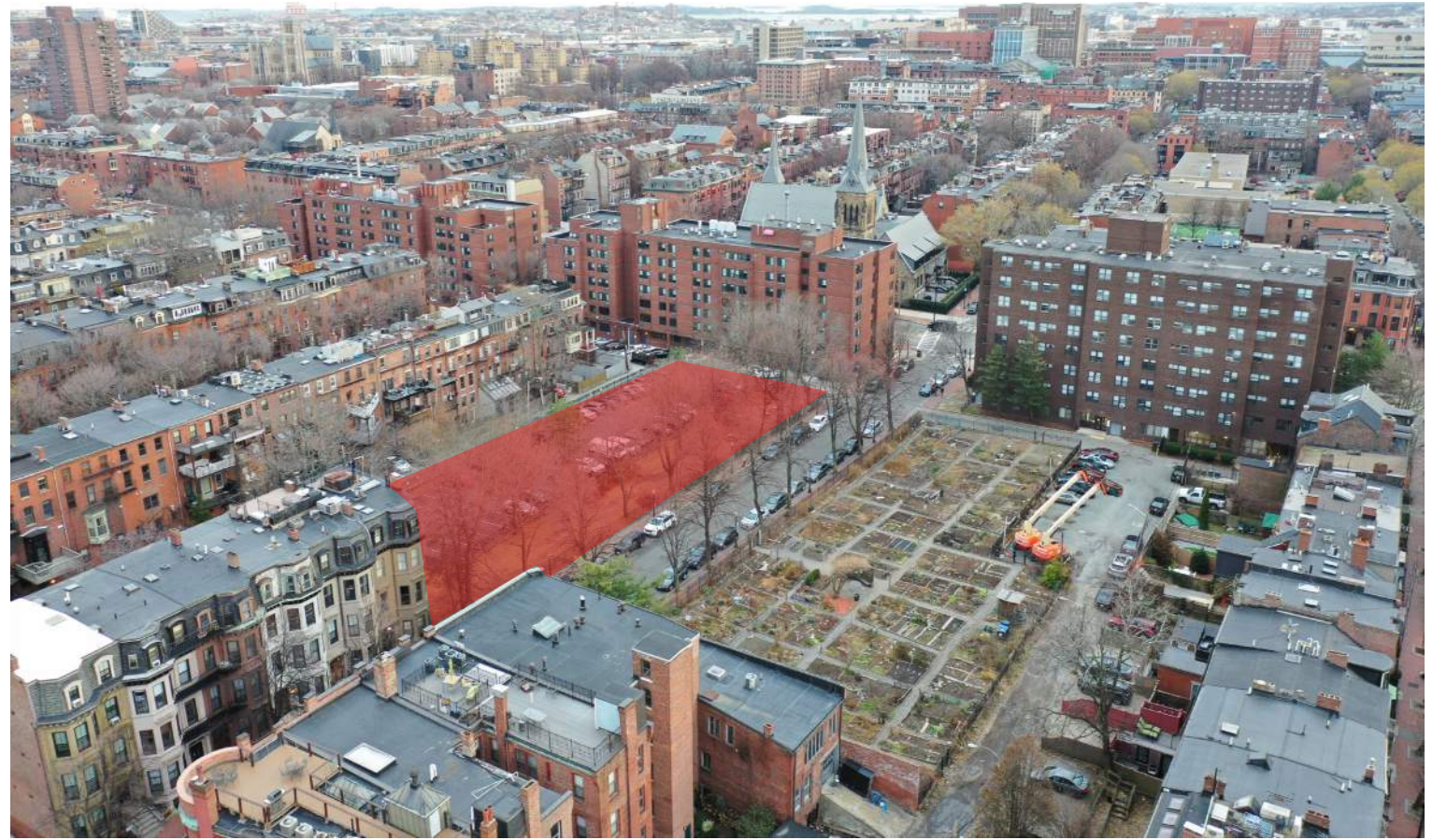
Boston, MA | August 15, 2019 | 14195 | © The Architectural Team, Inc.

Existing Conditions



  
LIHC  
INVESTMENT GROUP





715 - 725 Tremont Street / 115 Worcester Street

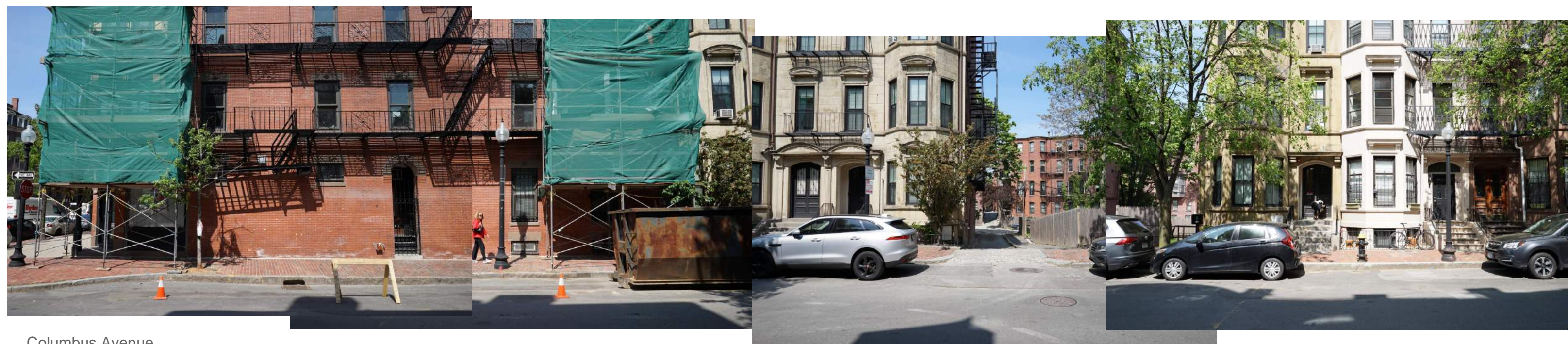
Existing Site Photos

Figure 1.5





Tremont Street →



← Columbus Avenue

715 - 725 Tremont Street / 115 Worcester Street

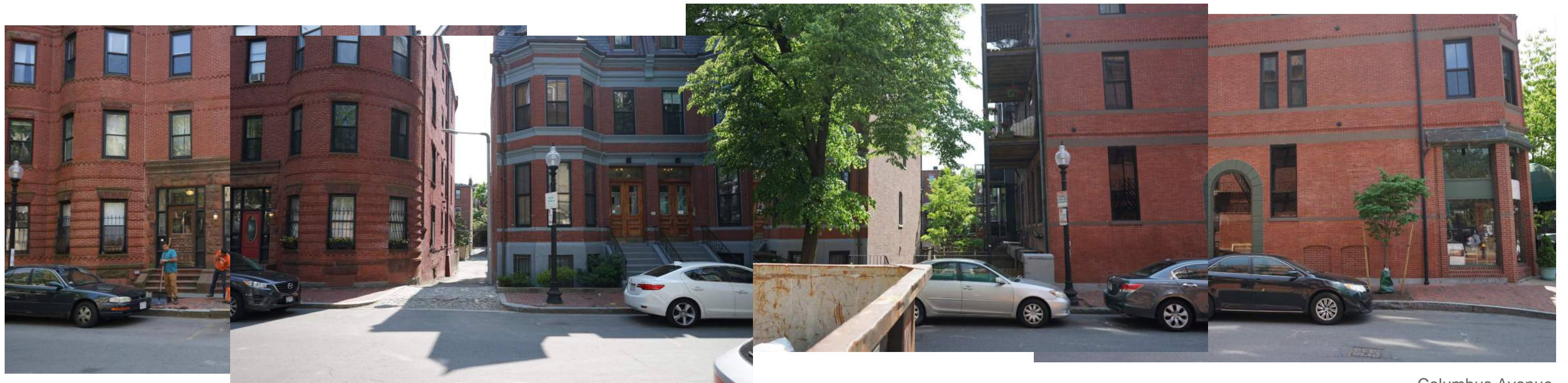
Boston, MA | July 29, 2019 | 14195 | © The Architectural Team, Inc.

Existing Site Photos





Tremont Street



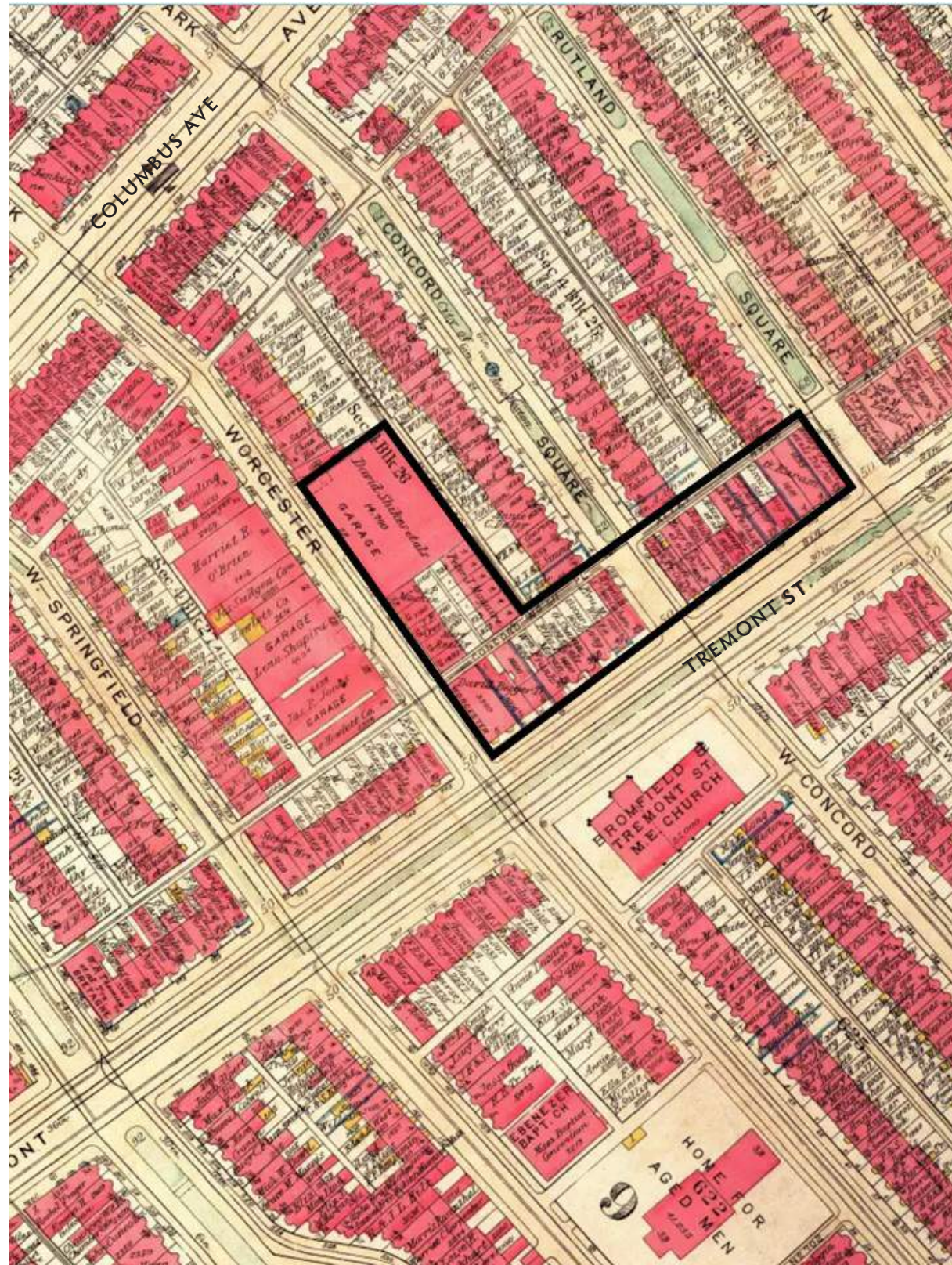
Columbus Avenue

715 - 725 Tremont Street / 115 Worcester Street

Boston, MA | July 29, 2019 | 14195 | © The Architectural Team, Inc.

Existing Site Photos

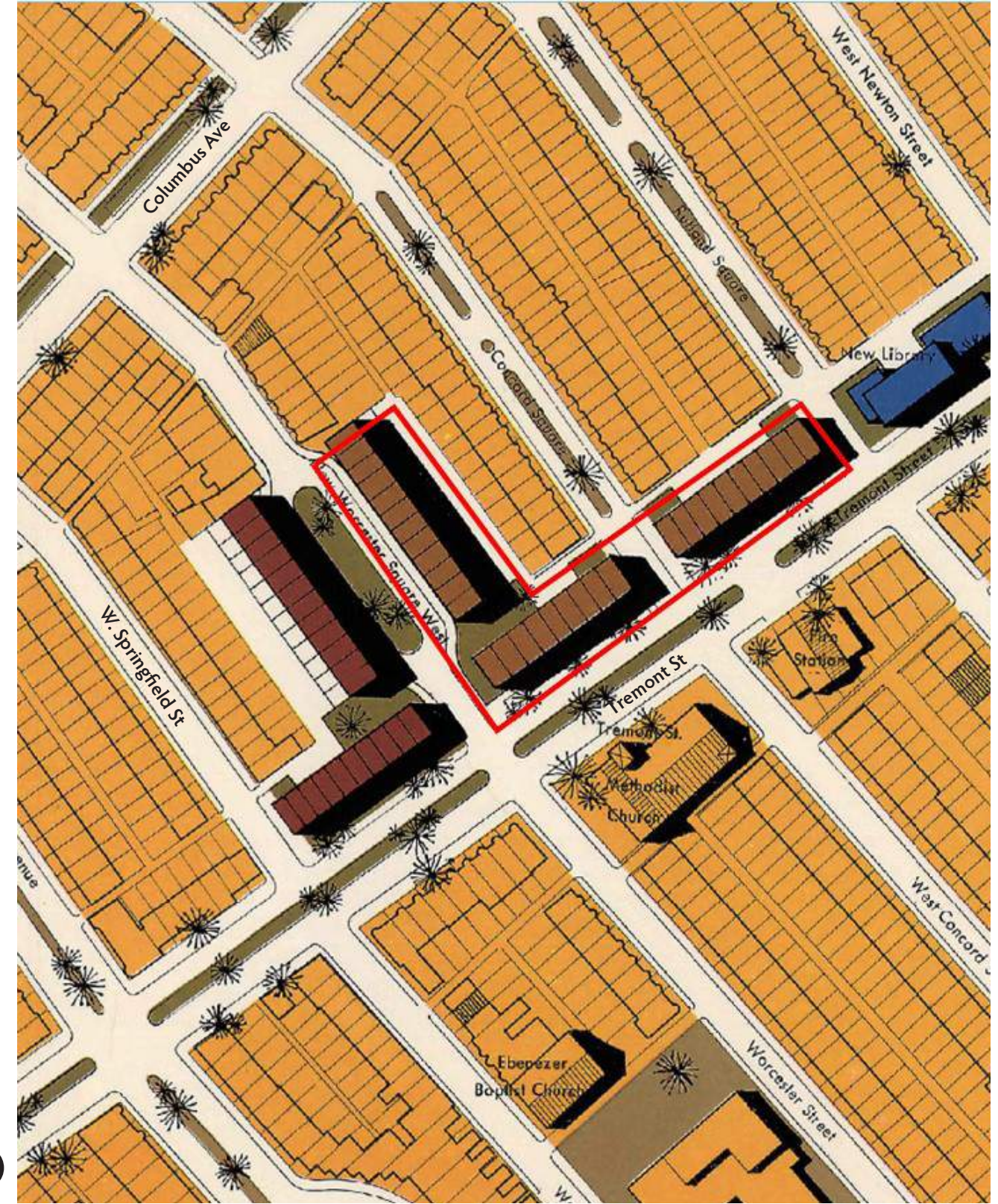
tat



Source: Boston Bromley Atlas, 1928.  
<https://www.mapjunction.com/>

Previous Conditions (1928)

 Project Site



Source: Boston South End Illustrative Site Plan, 1965.  
<https://www.mapjunction.com/>

South End Illustrative Plan (1965)

 Project Site



Source: BPDA Archives (3.21.1968)



Source: BPDA Archives (3.21.1968)





Source: BPDA Archives (11.28.1967)



Design precedent - 691 Massachusetts Avenue is an example of a contemporary interpretation of traditional design elements.





Design precedent - 7 East Springfield Street is an example of a contemporary interpretation of traditional design elements.



Design precedent -  
7 East Springfield Street is an example of a contemporary interpretation of traditional design elements.



## August 2015

- 5 stories +/- 59'
- Building set back +/- 35' from Worcester Street with green space in front



## July 2017

- 6 stories +/- 70'
- Building set back +/- 35' from Worcester Street with green space in front



## March 2019

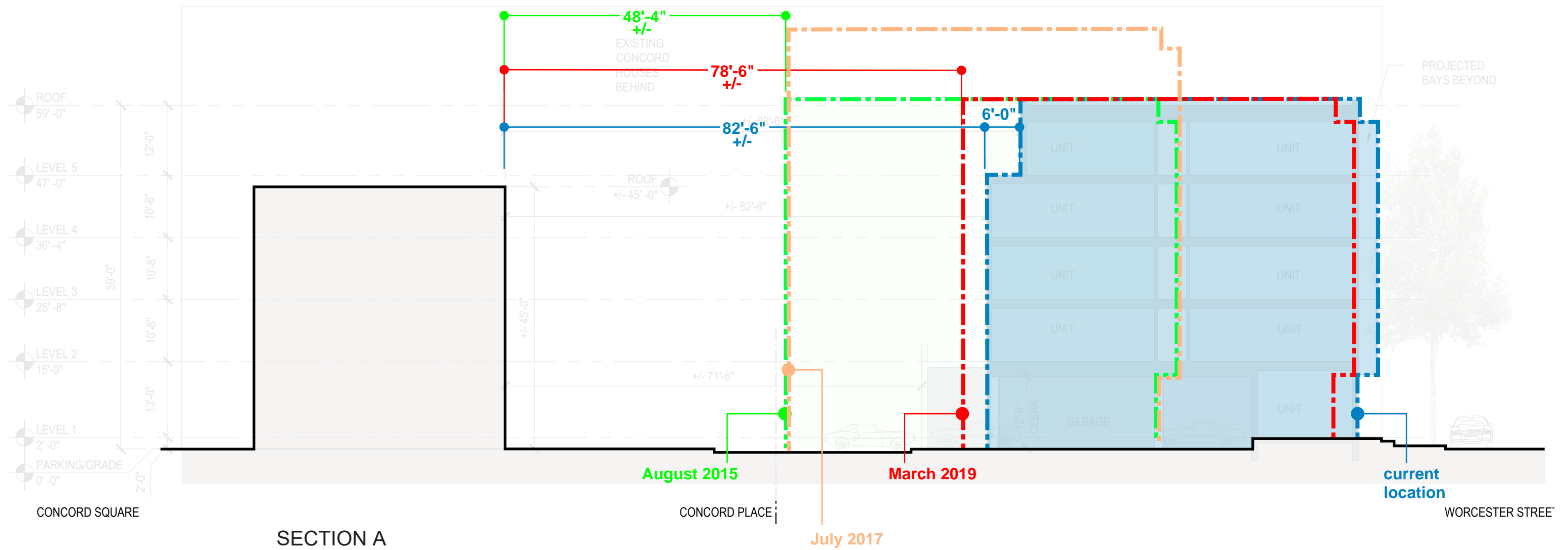
- 5 stories +/- 59'
- Building pushed +/- 30' toward Worcester Street



## June 2019

- 5 stories +/- 59'
- Building pushed +/- 4' toward Worcester Street
- Fifth floor pulled +/- 6' toward Worcester Street with decks

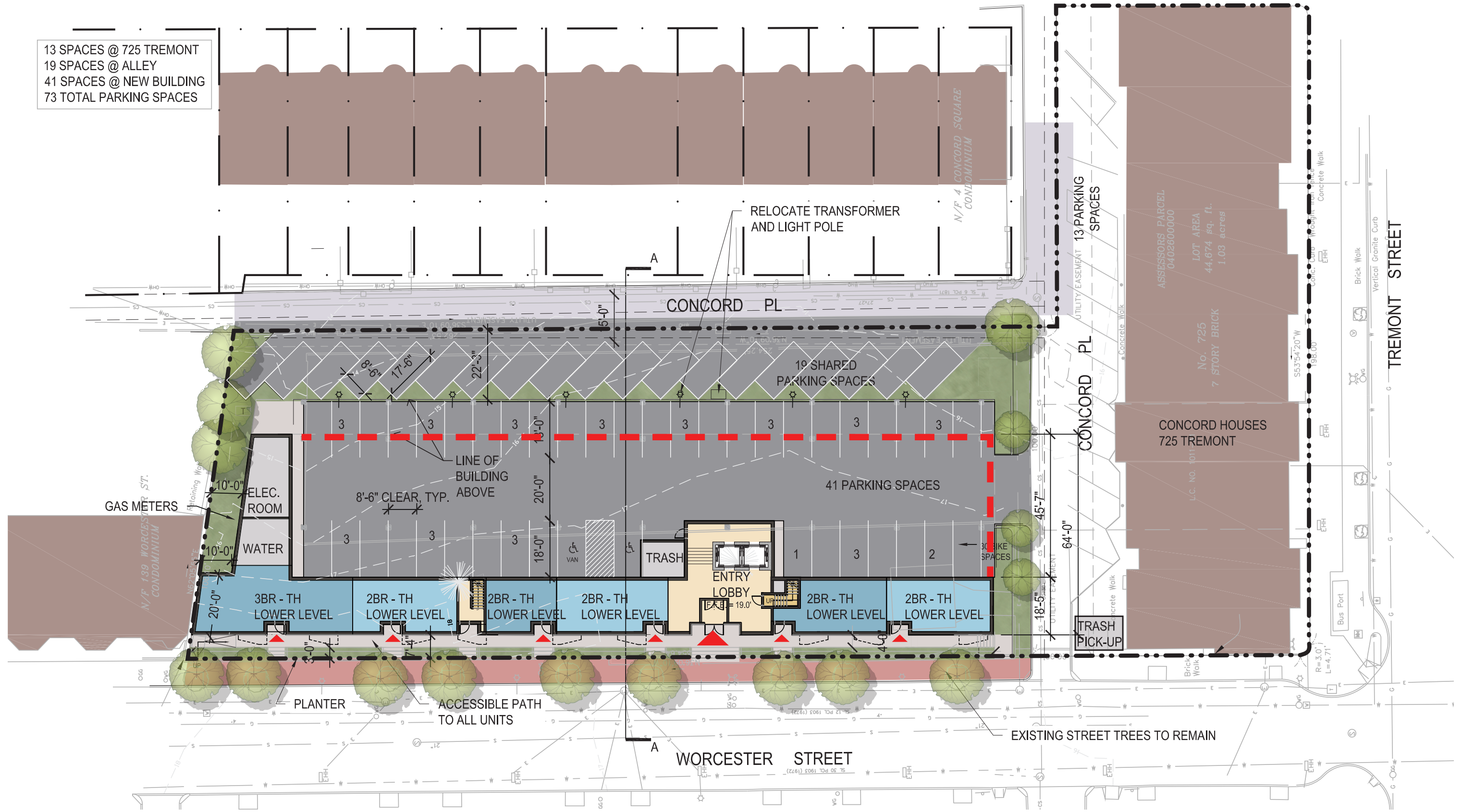


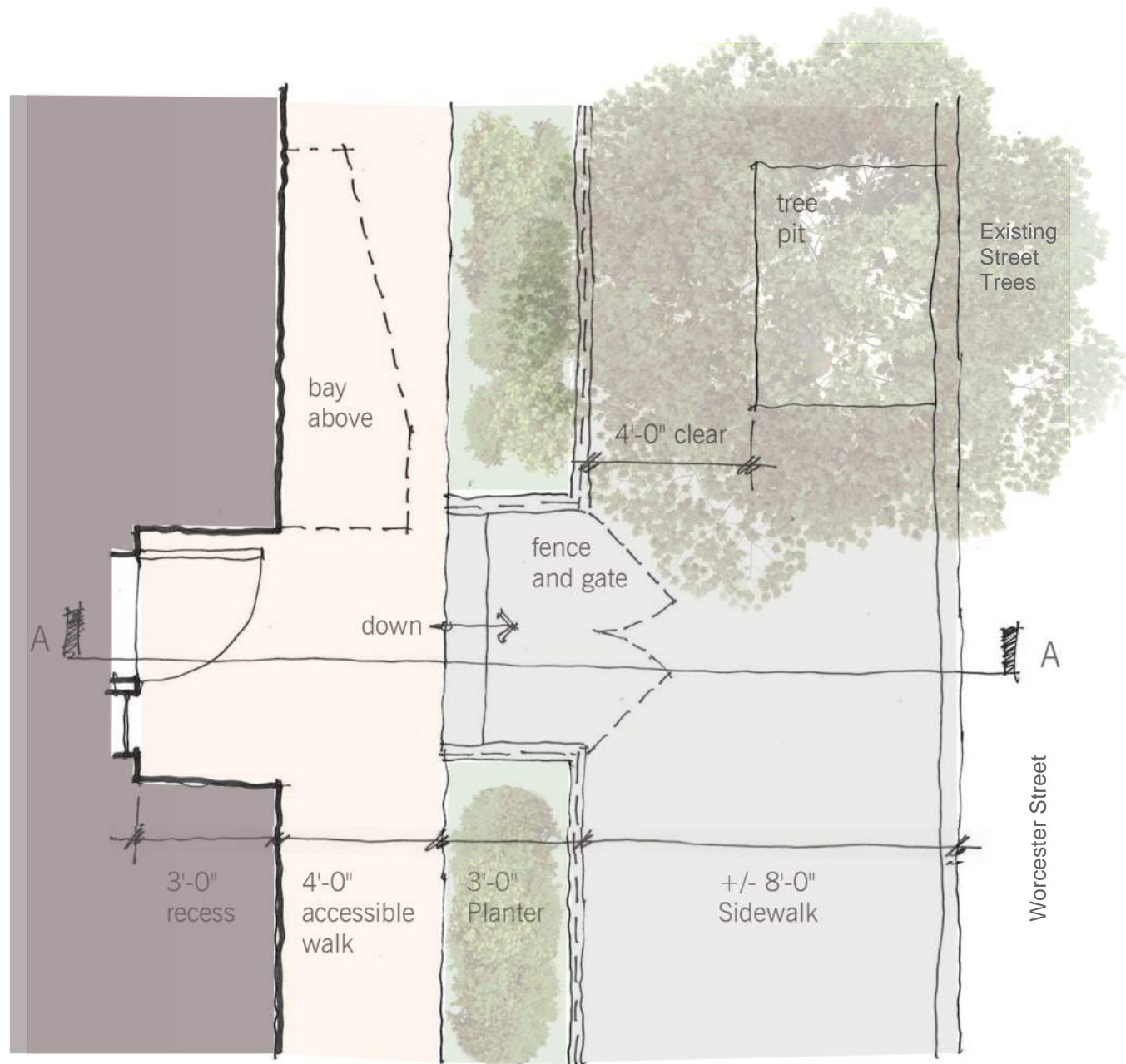




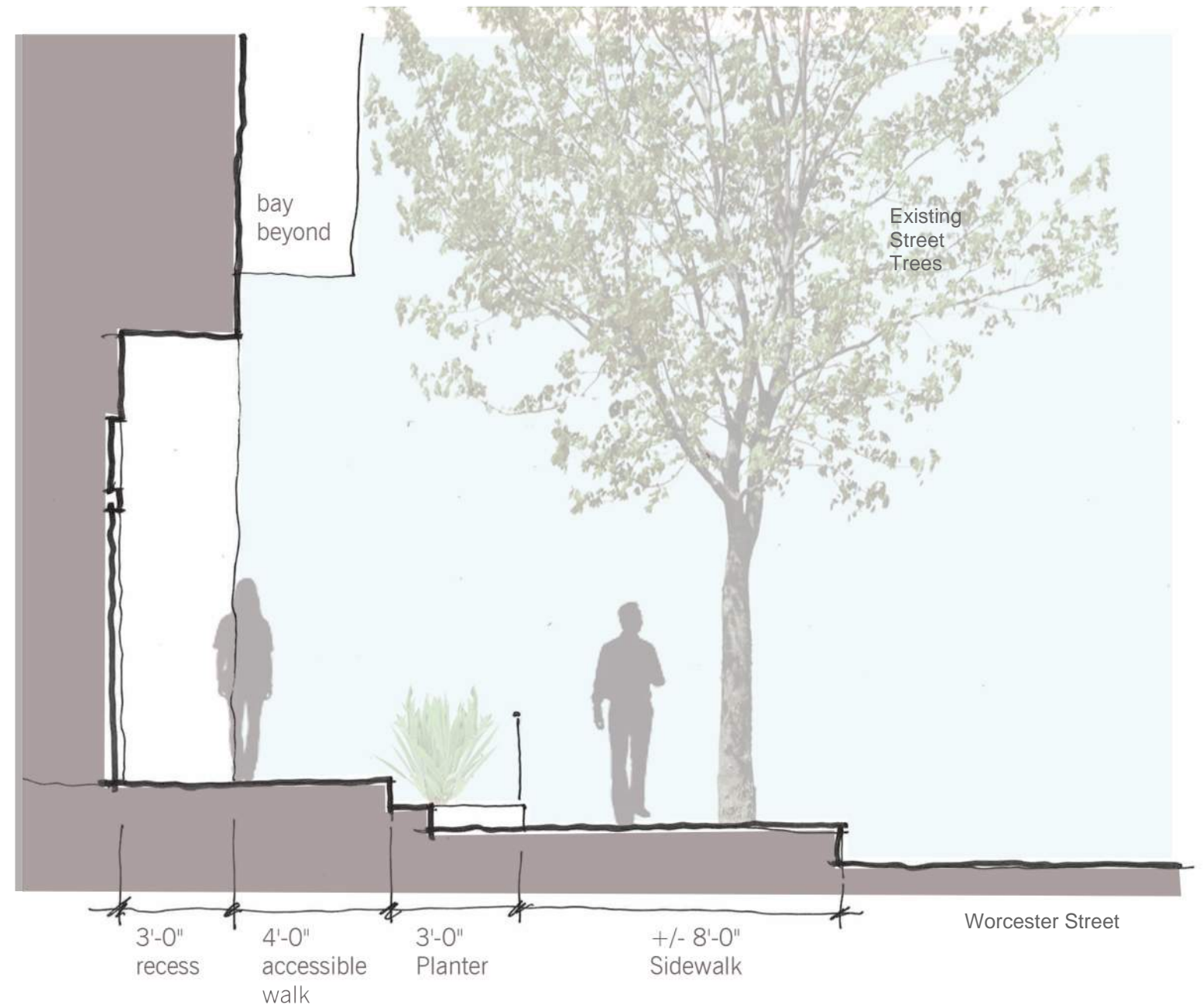
CONCORD SQUARE

13 SPACES @ 725 TREMONT  
 19 SPACES @ ALLEY  
 41 SPACES @ NEW BUILDING  
 73 TOTAL PARKING SPACES

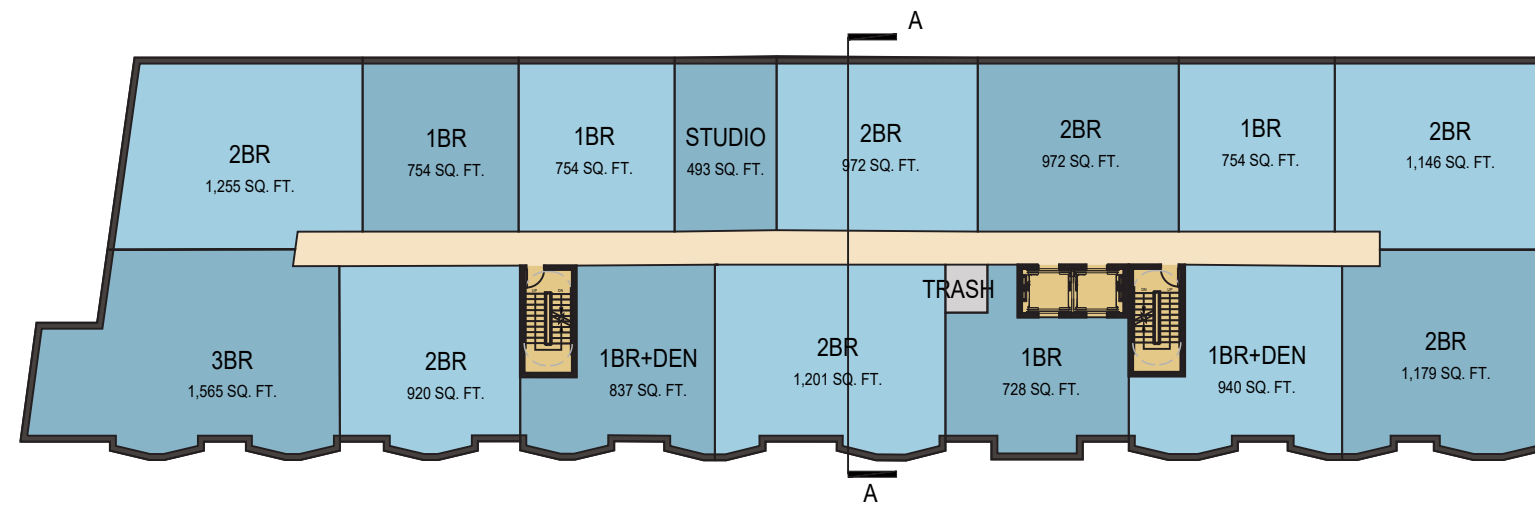




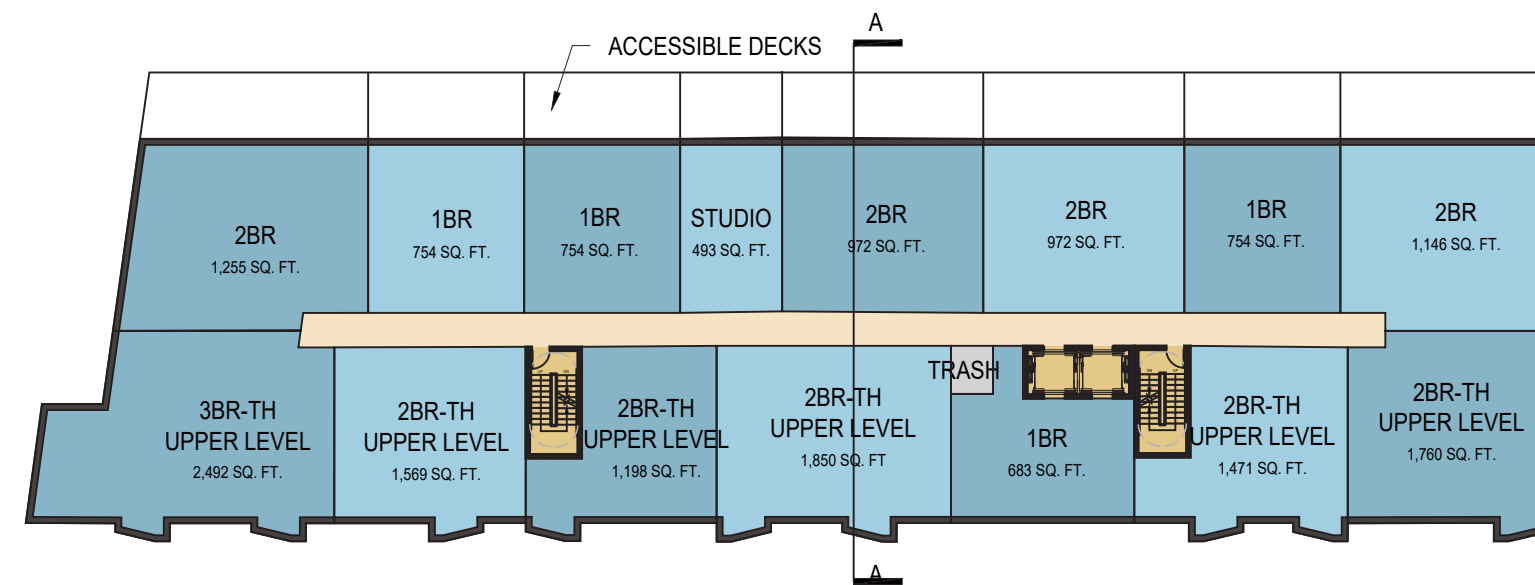
PLAN DETAIL AT UNIT ENTRY



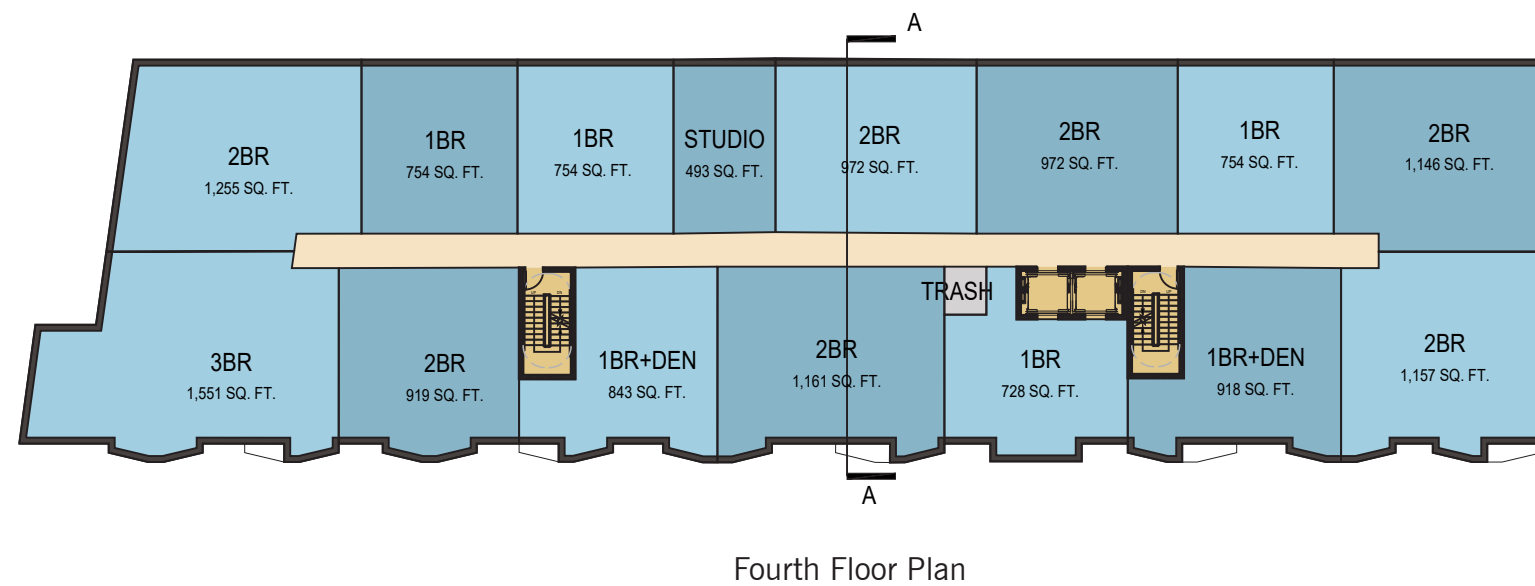
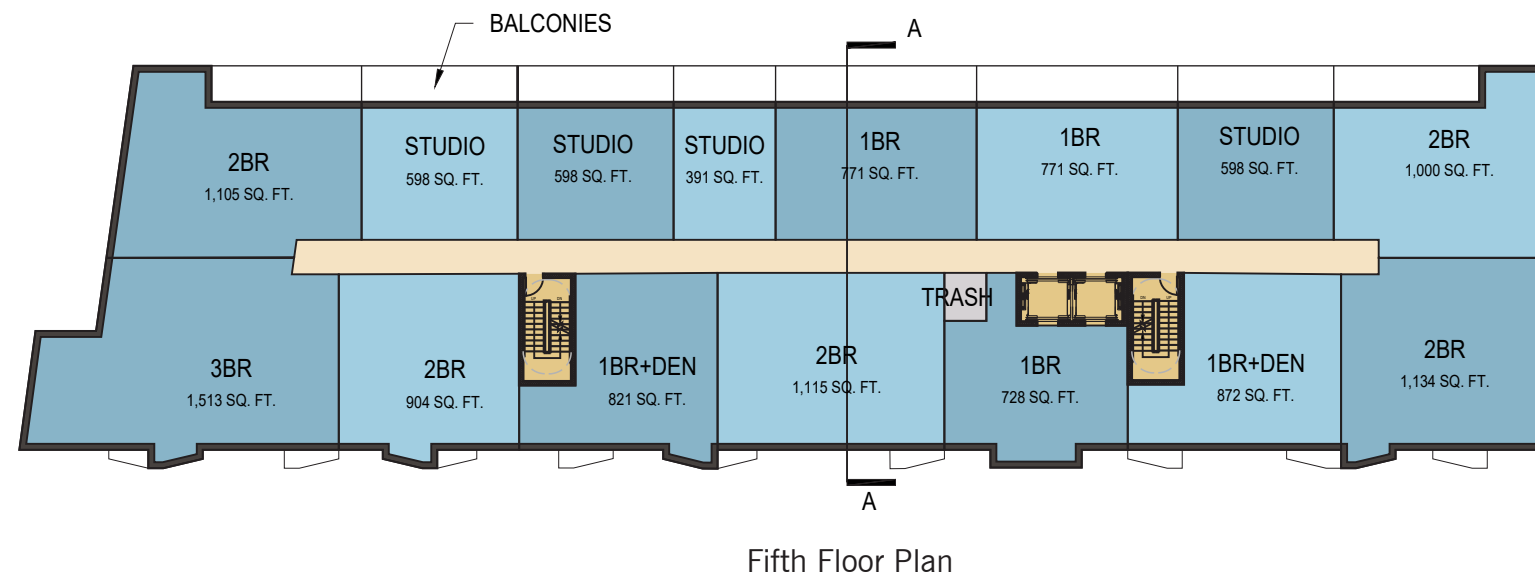
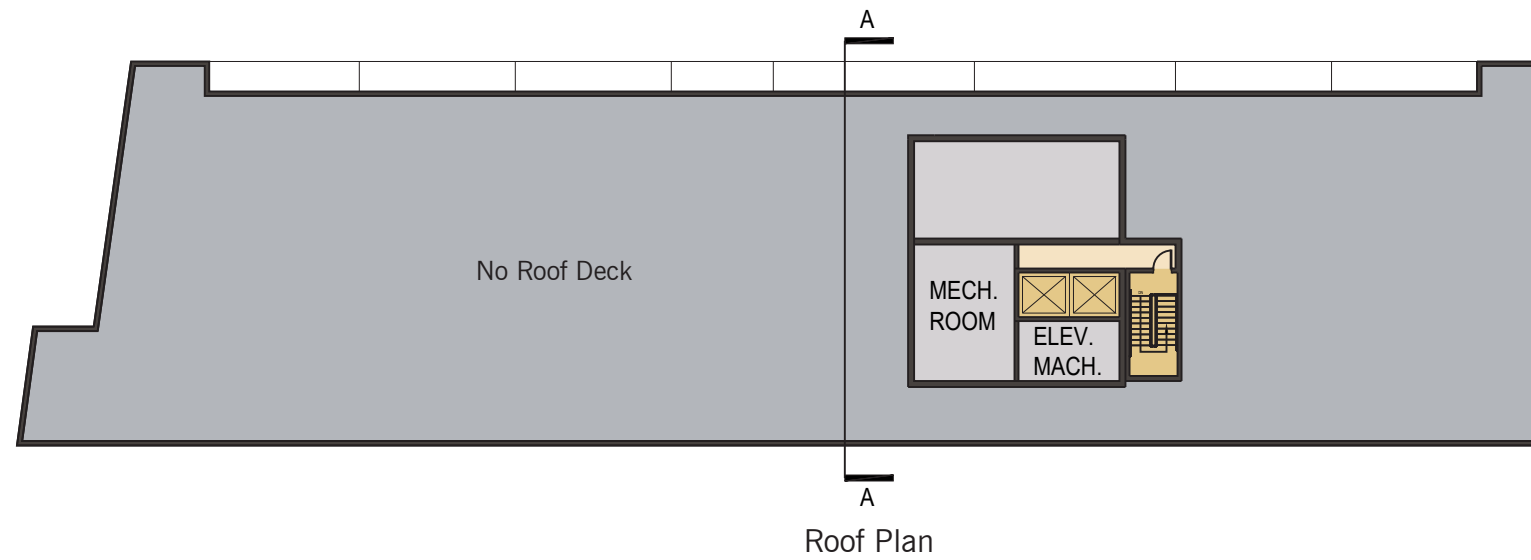
SECTION A-A AT UNIT ENTRY



Third Floor Plan

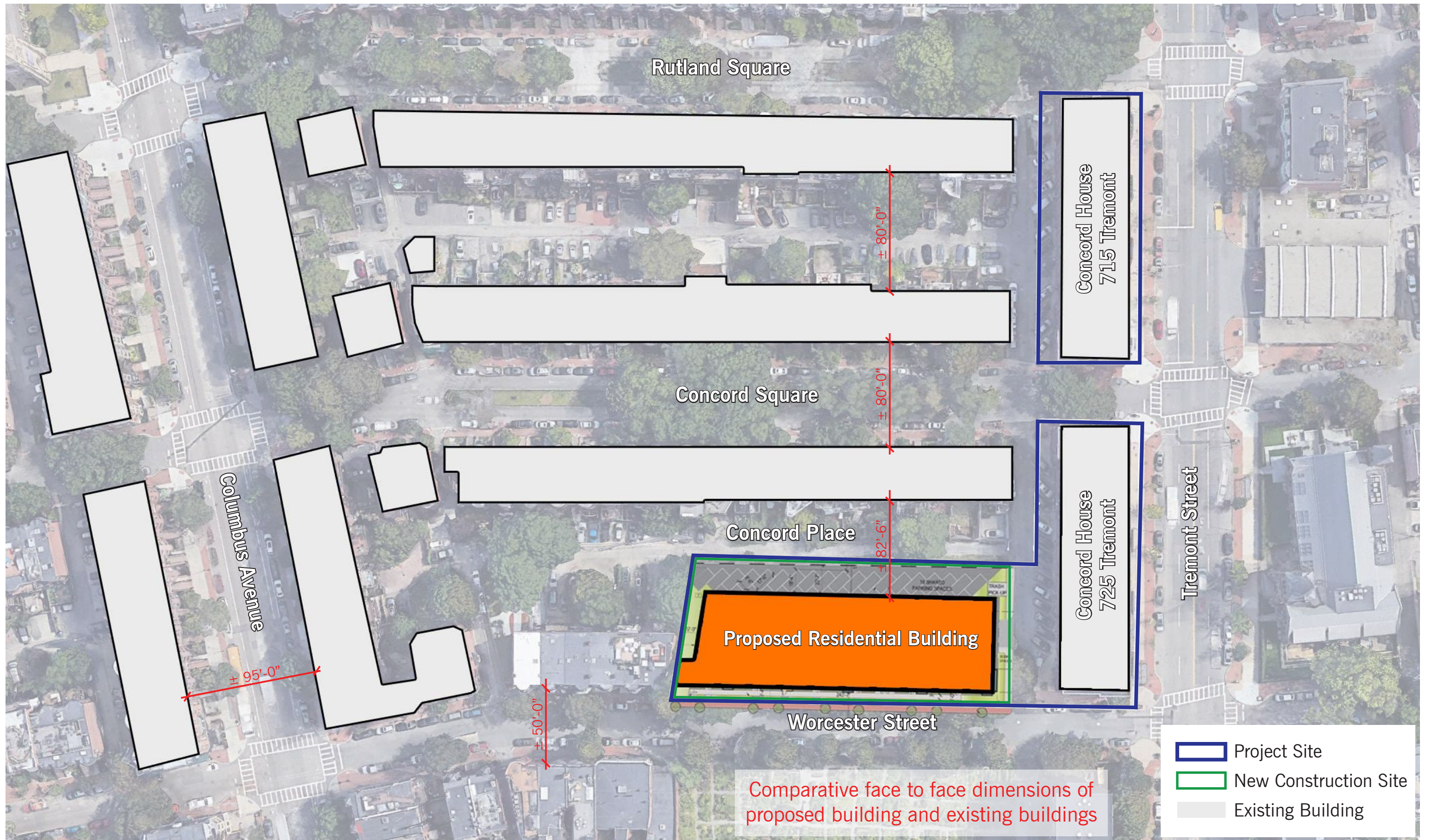


Second Floor Plan



Floor Plans







West Elevation (139 Worcester Street)



South Elevation (Worcester Street)



East Elevation (Concord Place)



North Elevation (Concord Place)



South Elevation



North Elevation





715 - 725 Tremont Street / 115 Worcester Street

Boston, MA | August 15, 2019 | 14195 | © The Architectural Team, Inc.

Rendered Perspective - Worcester Street

  
**LIHC**  
INVESTMENT GROUP

**tat**



715 - 725 Tremont Street / 115 Worcester Street

Boston, MA | August 15, 2019 | 14195 | © The Architectural Team, Inc.

Rendered Perspective - Worcester Street

  
**LHC**  
INVESTMENT GROUP

**tat**



715 - 725 Tremont Street / 115 Worcester Street

Boston, MA | August 15, 2019 | 14195 | © The Architectural Team, Inc.

Rendered Perspective - Worcester Street

  
**LIHC**  
INVESTMENT GROUP

**tat**



715 - 725 Tremont Street / 115 Worcester Street

Boston, MA | August 15, 2019 | 14195 | © The Architectural Team, Inc.

Rendered Perspective - Worcester Street

  
**LIHC**  
INVESTMENT GROUP

**tat**



715 - 725 Tremont Street / 115 Worcester Street

Boston, MA | August 15, 2019 | 14195 | © The Architectural Team, Inc.

Rendered Perspective - Worcester Street

  
LIHC  
INVESTMENT GROUP





715 - 725 Tremont Street / 115 Worcester Street

Boston, MA | August 15, 2019 | 14195 | © The Architectural Team, Inc.

Rendered Perspective - Concord Place

  
**LIHC**  
INVESTMENT GROUP

**tat**