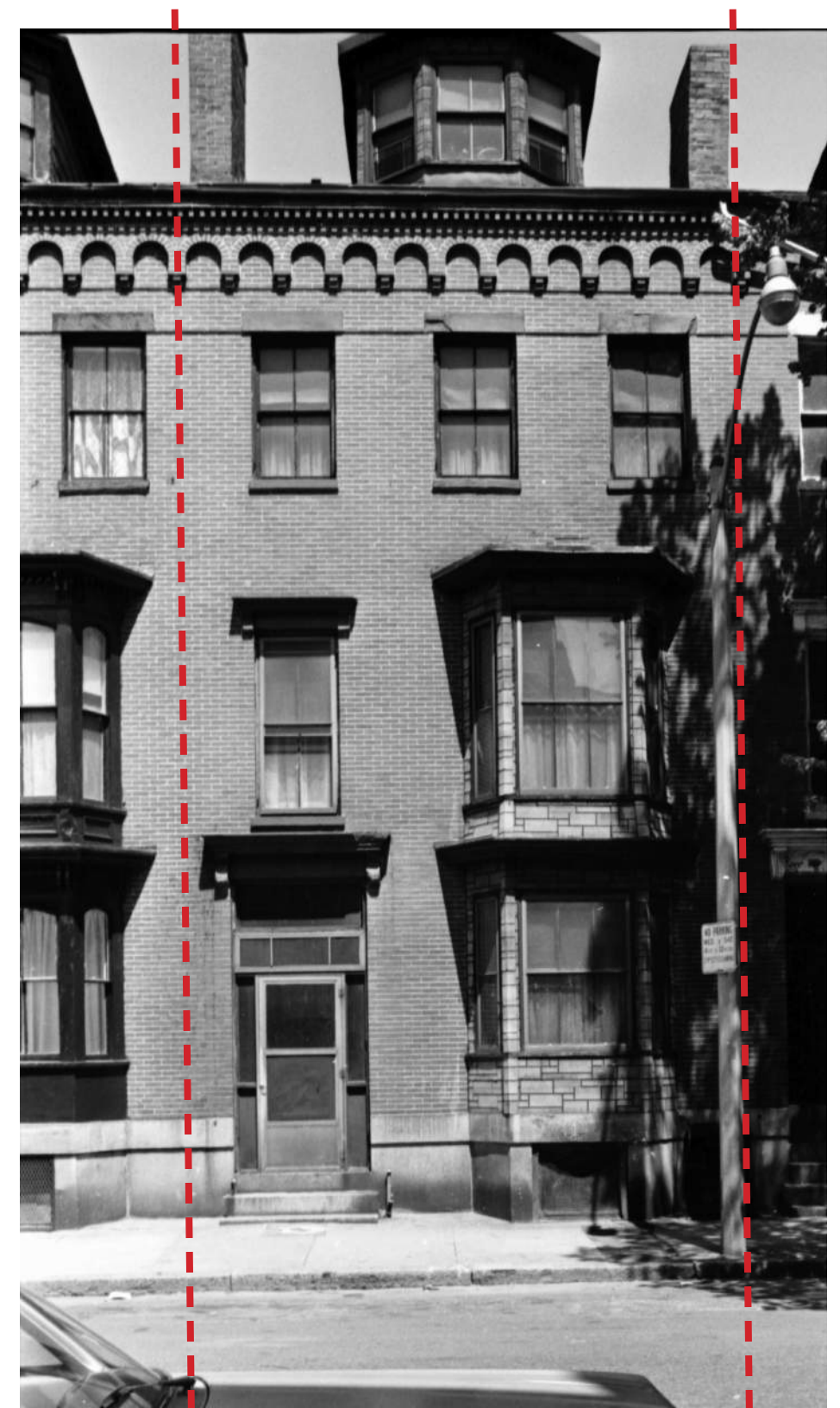


# 103 W. Springfield Street - Window and Trim Replacement

Circa 2019



Circa 1972





# 103 W. Springfield Street - Mishmash of Window Types



## Windows by Floor:

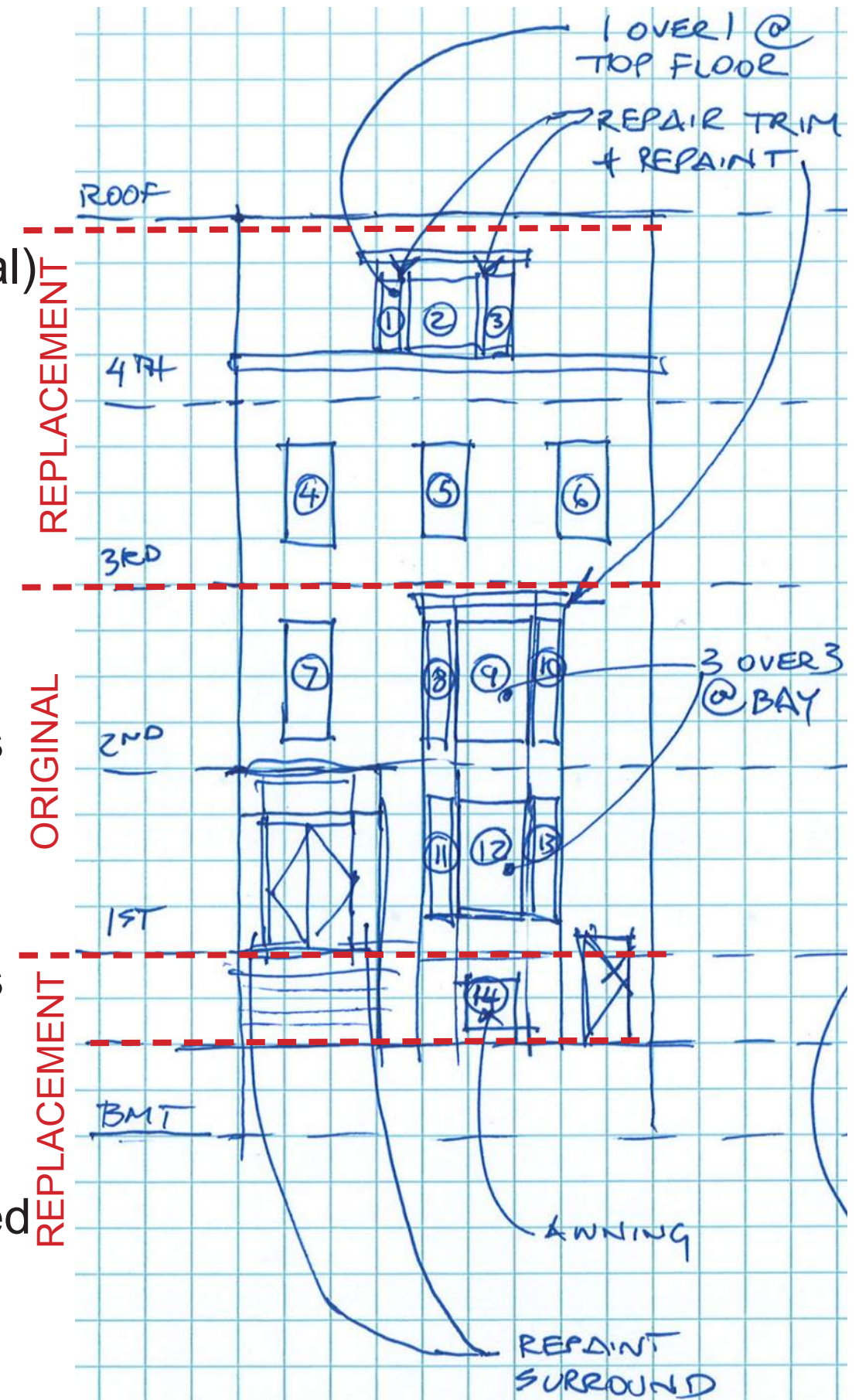
Top Floor: (1- 3)  
Single pane replacement sashes w/ storms (not original)

Third Floor: (4-6)  
Double pane insulated wood replacement windows w/o storms (not original)

Second Floor: (7-10)  
Single pane original windows w/ storms

First Floor: (11-13)  
Single pane original windows w/ storms

Basement (14)  
Single pane 6 over 6 salvaged window w/ storms





# 103 W. Springfield Street - Top Floor - Replace with Pella Architect Series



Top Floor: (1- 3)  
Single pane replacement  
sashes w/ storms (not original)  
- 7/8" ogee  
- Replacement pine frame  
- Sill and frame rot





103 W. Springfield Street - Third Floor - Replace with Pella Architect Series



Third Floor: (4-6)  
Double pane insulated wood  
replacement windows w/o  
storms (not original)  
- 5/8" ogee  
- Paint peel / deterioration





# 103 W. Springfield Street - Basement - Replace with Pella Architect Series



- Basement (14)  
Single pane salvaged awning window w/ storms
- 7/8" ogee
  - Repurposed 6 over 6 sash
  - Frame and sill rot
  - Nonexistent in 1972





# 103 W. Springfield Street - First and Second Floors



First and Second Floor: (7-13)  
Single pane original windows  
w/ storms

- 1" ogee
- Obscured by storms





## 103 W. Springfield Street - Adjacent Neighbor / Abutter Improvements



102 W. Springfield St. - In 2012 replaced original Chain and Pulley windows with new aluminum clad insulated glass windows with city approval



99 & 101 W. Springfield St. - In April 2012 replaced original windows and storms with new Jeld-Wen insulated glass windows with city approval

### Project Goals:

Improved energy efficiency and thermal comfort

Consistent approach to the facade for greater curb appeal

Improved window sightlines and better window functionality

### Fall 2019 Pricing:

Restore (cost + labor):

Storms - \$580/window

Rebuild - \$1,733 / window

Total - \$2,313 / window

Replace (cost + labor):

New - \$1,597 / window

\$716 / window difference