

71 Beacon Street, Unit 5

APP # 20.380 BH

Proposed Work: At rear facades level four, replace five, wood, 6 over 6 original windows with five 6 over 6, simulated divided light windows



Lead Safe Homes

[New Search](#) [Search Results](#)

Search Criteria:

Town: BOSTON
StreetName: Beacon St
Street Number: 71

List of Details

Town	Address	Unit	Inspection Date	Inspection Type	Outcome	Inspected By	Inspector Licence#
BOSTON	71 Beacon St	5	6/21/2018	Comprehensive Initial Inspection	Hazards Found	Benjamin Misch	3984

LeadSafeHomes - Hazards Found - Google Chrome

eoohs.ehs.state.ma.us/leadsafehomes/Violations.htm

Hazards Found

At the time of inspection there were lead hazard found on the property. The inspection showed areas that did not meet Massachusetts rules for lead safety. Lead paint was found in poor condition (chipping or peeling), or on areas of windows that could make dust, or in areas where young children could reach it.

Under Massachusetts rules, these areas must be deleaded if there are children under 6 years old living there.



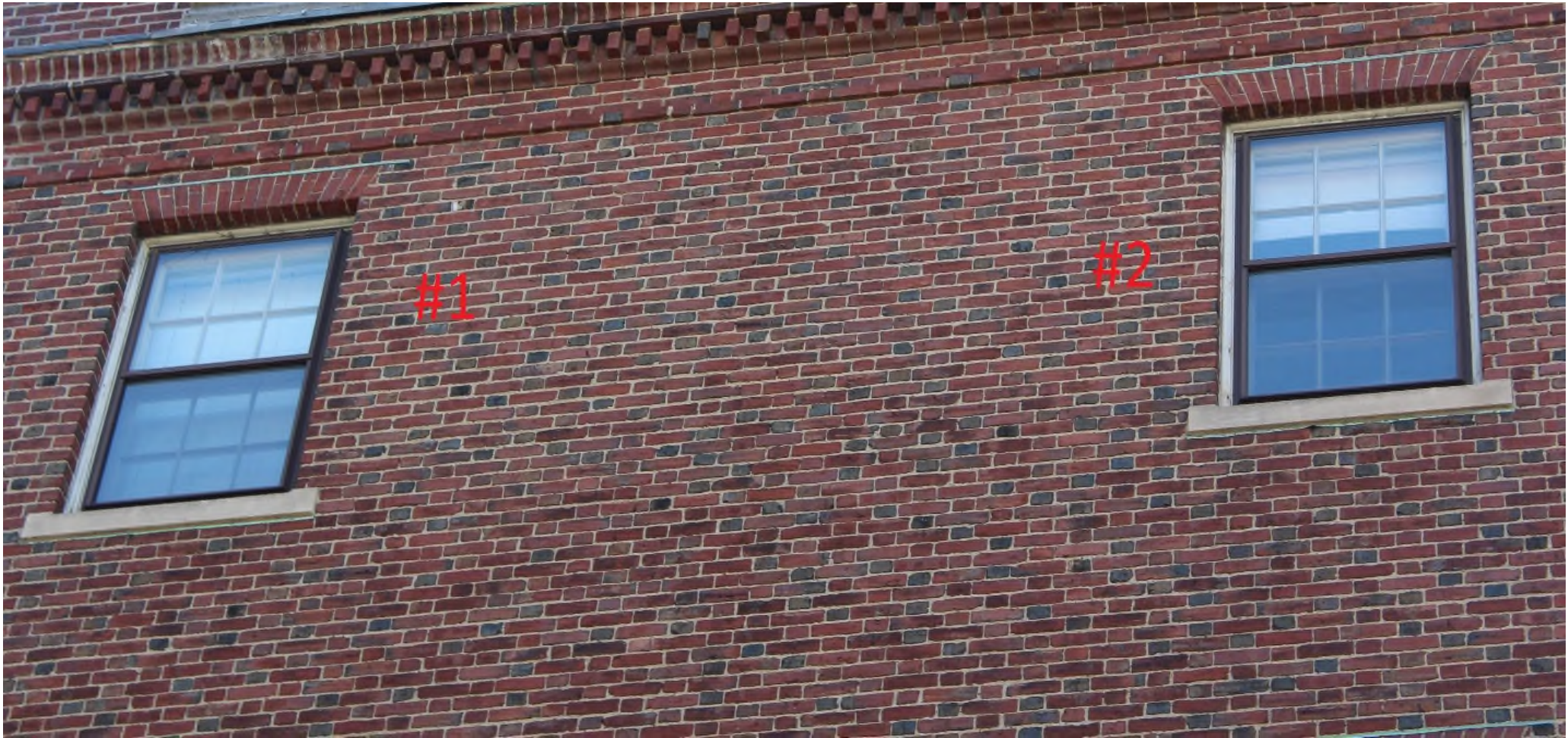


Beacon
Street

Byron Street
(Private Way)

Google





BYRON STREET



BYRON STREET



BYRON STREET



BYRON STREET/ PRIVATE GARDEN

#4



BYRON STREET/ PRIVATE GARDEN



BYRON STREET/ PRIVATE GARDEN



BYRON STREET/ PRIVATE GARDEN



WINDOW #1,
LEFT



WINDOW #1,
RIGHT



WINDOW #2



WINDOW #3



WINDOW #3



WINDOW #4,
LEFT



WINDOW #4,
RIGHT



WINDOW #4

FEATURES ^

HISTORIC REQUIREMENTS >

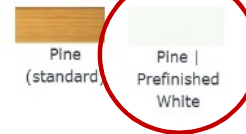
- Fiberglass screen included; VIEWS screen and other options available
- ENERGY STAR® glazing standard
- **Solid pine interior/Aluminum clad exterior**
- Our high quality prefinished option eliminates the need to paint or provides an ideal base to add custom paint color post-installation
- Easy to operate, pre-calibrated block and tackle balance system never needs adjustment
- Both sashes tilt in for easy cleaning
- Recessed hardware for unobstructed views

FINISHES ^

ALUMINUM CLADDING/FINISH



INTERIOR FINISHES



HARDWARE ∨

GRIDS ∨

GRIDS BETWEEN GLASS



5/8" or 1", Color-Matched

INTERIOR SNAP-IN GRIDS



5/8" or 1" Pine or Prefinished

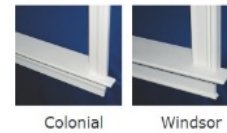
SIMULATED DIVIDED LITES (SDL)



5/8" or 1"
Includes interior snap-in, Dark Bronze GBG, and exterior applied

TRIM & CASING ∨

TRIM



Colonial

Windsor

YOU MIGHT ALSO LIKE ^



REPLACEMENT WINDOW EXTERIOR



REPLACEMENT WINDOW INTERIOR



REPLACEMENT WINDOW INTERIOR MUNTIN



REPLACEMENT WINDOW INTERIOR MUNTIN