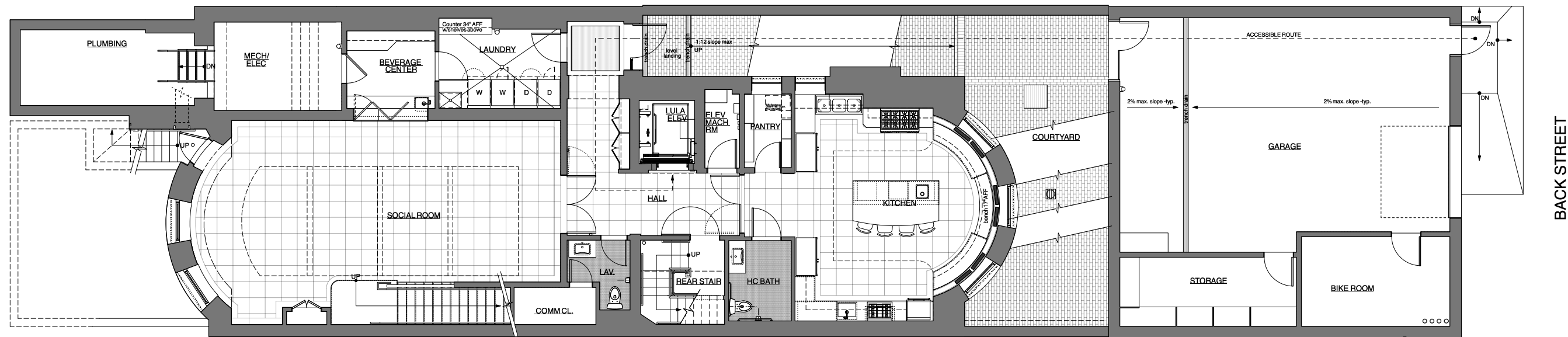
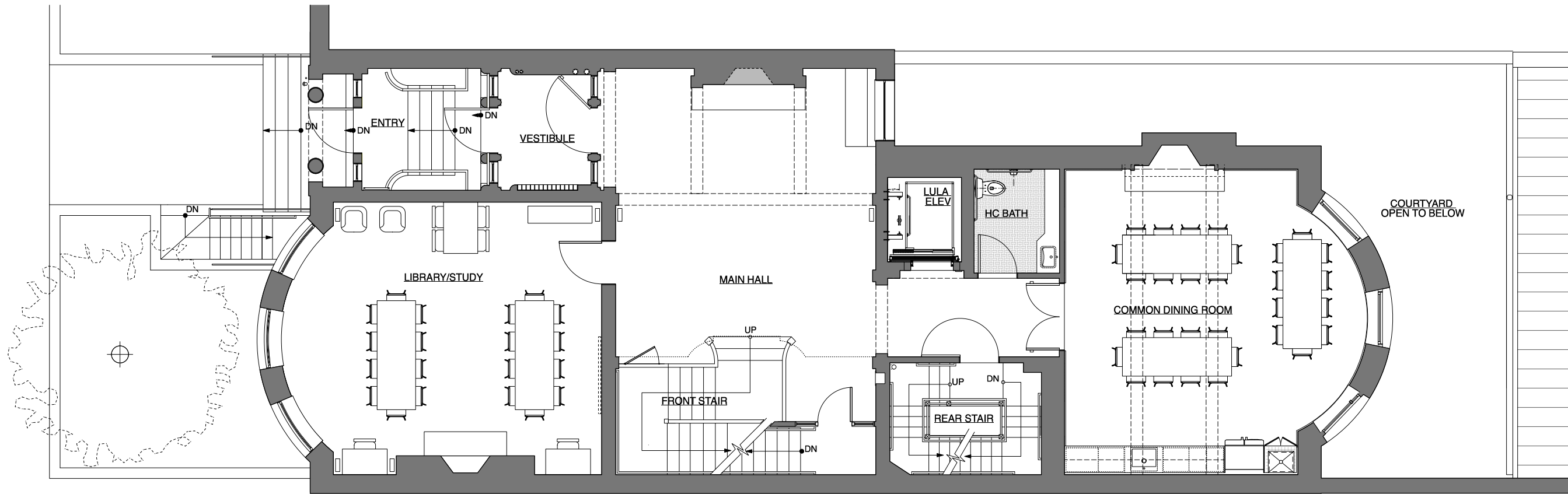


SITE PLAN @ FIRST FLOOR LEVEL

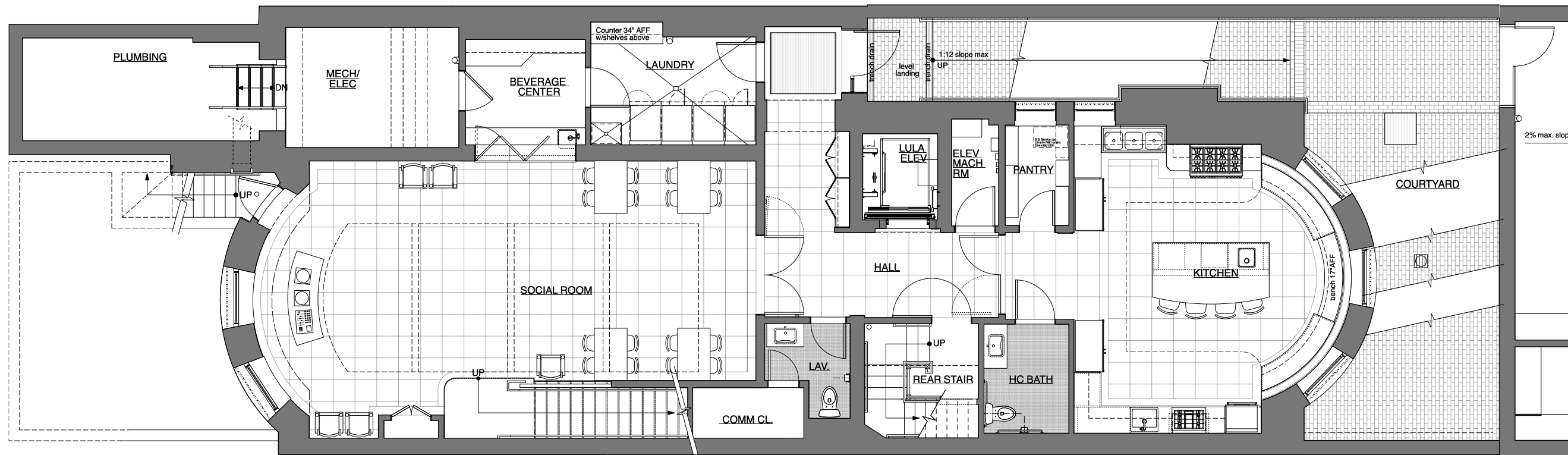


SITE PLAN @ BASEMENT LEVEL



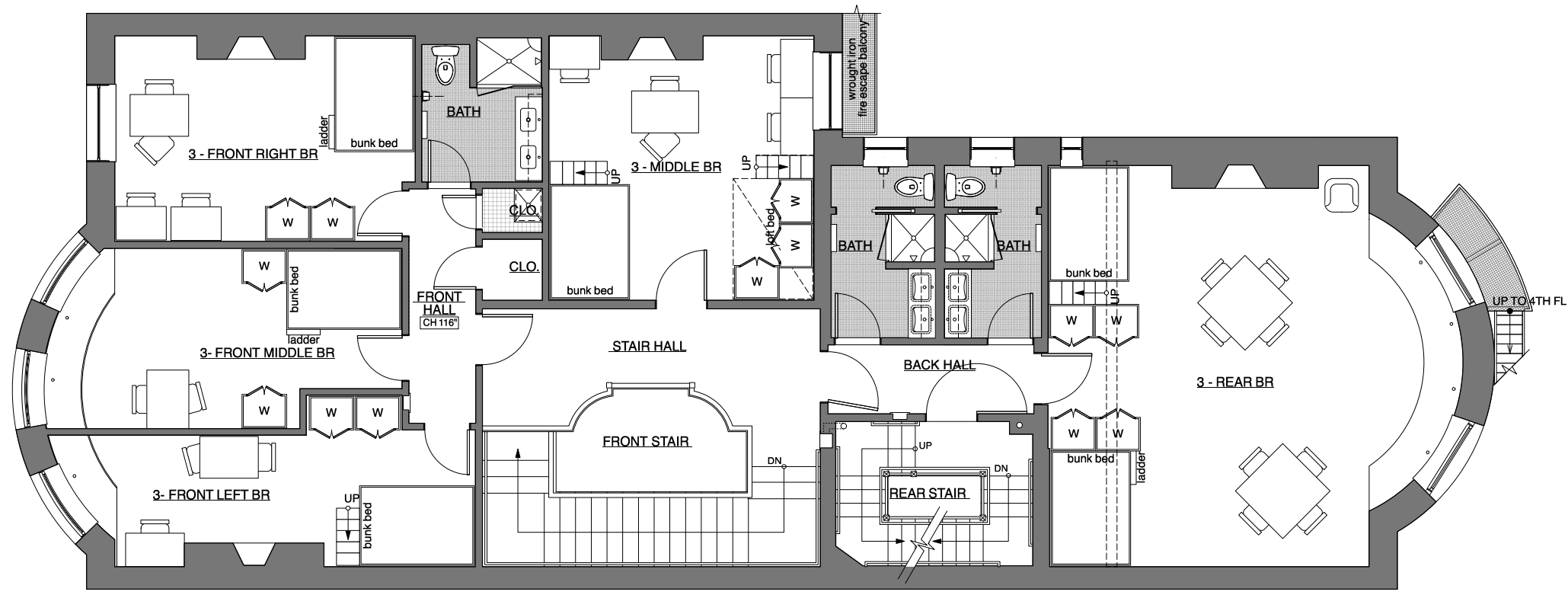


FIRST FLOOR PLAN

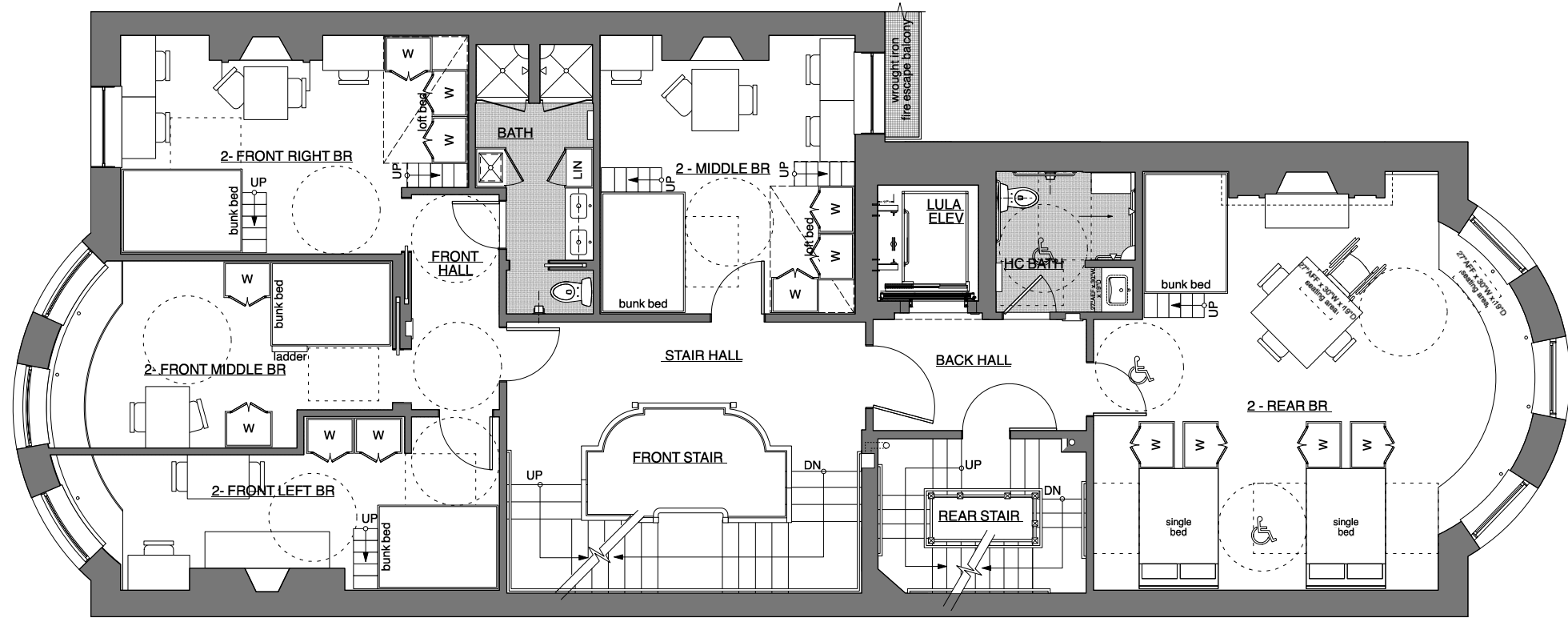


BASEMENT FLOOR PLAN



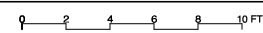


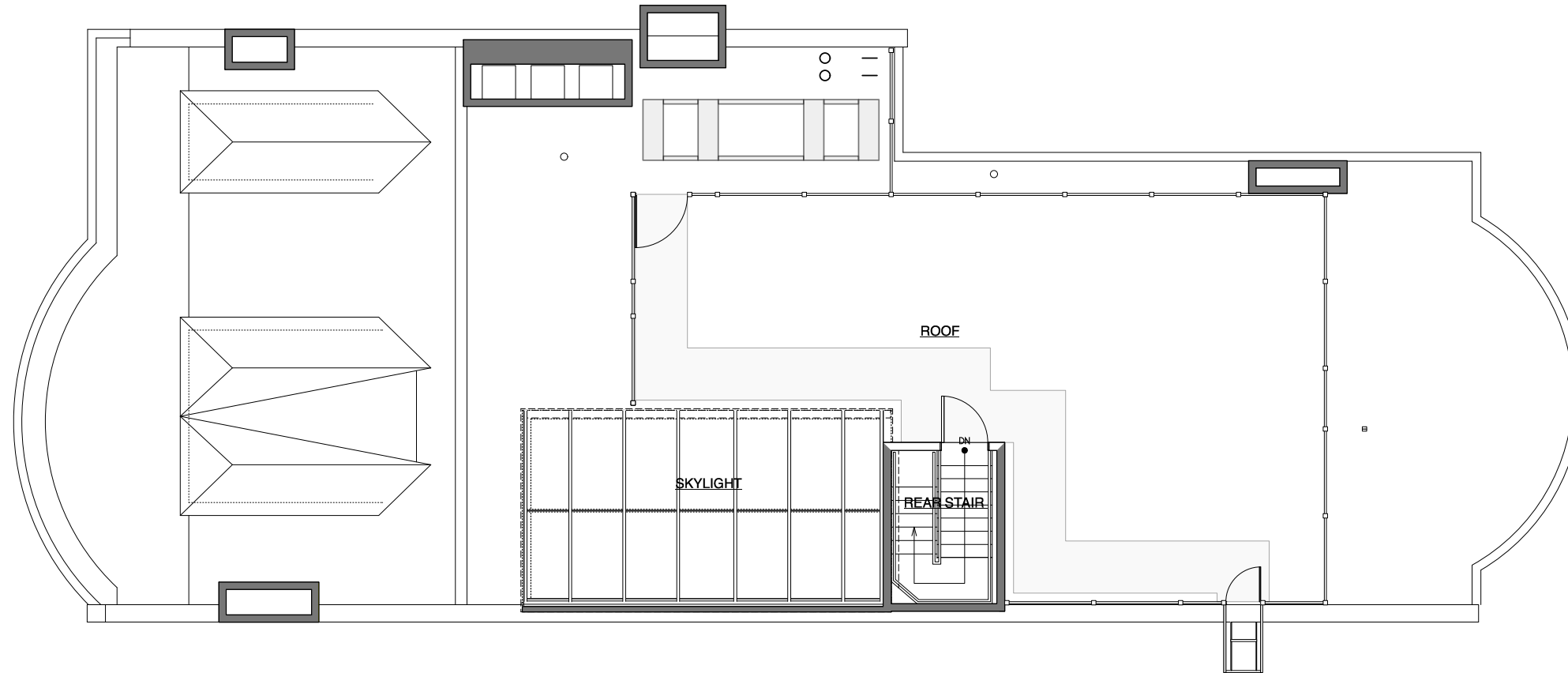
THIRD FLOOR PLAN



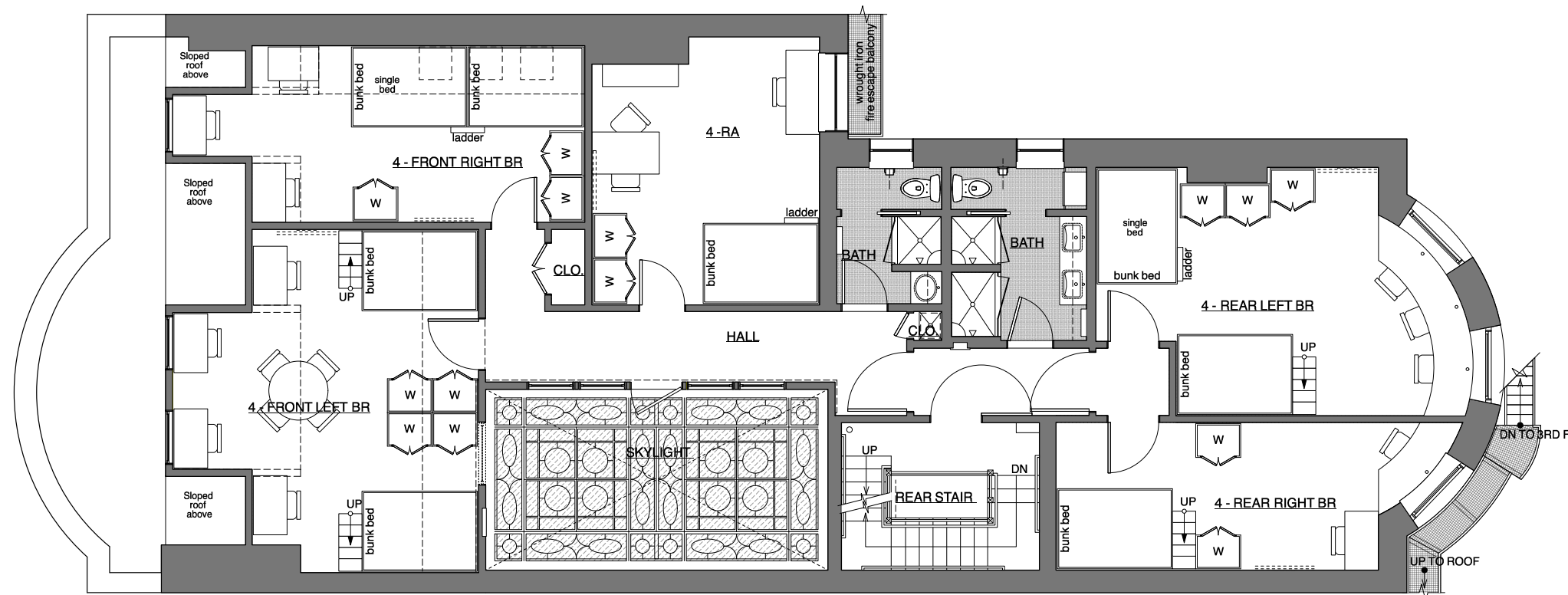
SECOND FLOOR PLAN

PROPOSED SECOND & THIRD FLOOR PLAN





ROOF PLAN



FOURTH FLOOR PLAN

PROPOSED FOURTH & ROOF PLAN

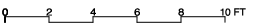




**REAR ELEVATION (NORTH)**

**FRONT ELEVATION (SOUTH)**

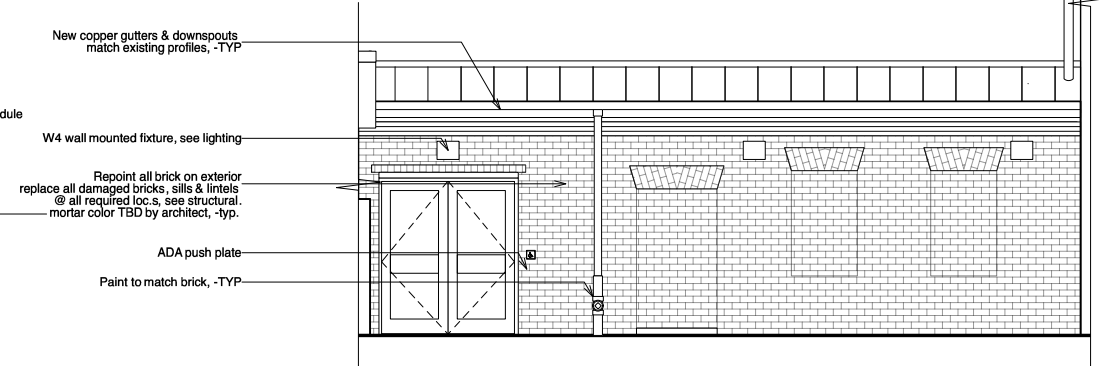
**PROPOSED FRONT & REAR ELEVATIONS**





**GARAGE REAR ELEVATION (NORTH)**

W4 wall mounted fixture, see lighting schedule  
 Painted raised wood panels above  
 Door, trim & panels paint - Benjamin Moore AF-180 Wenge, Semi-gloss, -TYP  
 Accessible intercom - ADA pushplate



**GARAGE ELEVATION COURTYARD (SOUTH)**

New copper gutters & downspouts match existing profiles, -TYP  
 W4 wall mounted fixture, see lighting  
 Repoint all brick on exterior replace all damaged bricks, sills & lintels @ all required loc.s, see structural. mortar color TBD by architect, -typ.  
 ADA push plate  
 Paint to match brick, -TYP

**PROPOSED FRONT & REAR GARAGE ELEVATIONS**



**New Historical & Replacement Window Schedule see elevations for window locations**

| Mark | Count | Location | Window Schedule |             | Lower Sash Width | Lower Sash Height | Window Style  |          | Glass       | Openings   |          |           | Window Data |           |              | Comments  |
|------|-------|----------|-----------------|-------------|------------------|-------------------|---------------|----------|-------------|------------|----------|-----------|-------------|-----------|--------------|---|
|      |       |          | O.A. Width      | O.A. Height |                  |                   | Configuration | Material |             | Egress Win | RO Width | RO Height | Mfr         | Model No. | Accessories  |   |
| W-01 | 2     | Bsmnt    | 4'0"            | 3'0 5/8"    |                  |                   | Double Hung   | Wood     | Triple Pane |            |          |           |             |           | Replacement  |   |
| W-03 | 1     | Bsmnt    | 3'6 1/4"        | 3'11"       | 3'0 3/4"         | 1'10 1/4"         | Double Hung   | Wood     | Triple Pane |            |          |           |             |           | Replacement  |   |
| W-04 | 1     | Bsmnt    | 3'6 1/4"        | 5'9"        | 3'0 3/4"         | 2'9"              | Double Hung   | Wood     | Triple Pane |            |          |           |             |           | Replacement  |   |
| W-05 | 1     | Bsmnt    | 4'2 1/2"        | 5'6 3/4"    | 4'0 7/8"         | 3'0"              | Double Hung   | Wood     | Triple Pane |            |          |           |             |           | Replacement  |   |
| W-06 | 2     | Bsmnt    | 4'2"            | 4'6"        | 4'0 7/8"         | 3'0"              | Double Hung   | Wood     | Triple Pane |            |          |           |             |           | Replacement  |   |
| W-07 | 3     | 1st      | 4'4 3/4"        | 8'2 3/4"    | 3'2 3/4"         | 4'2"              | Double Hung   | Wood     | Double Pane |            |          |           |             |           | New Historic | Curved Glass & Frame - to match profile, material, & finish                                   |
| W-08 | 1     | 1st      | 4'7 3/4"        | 8'1 1/2"    | 4'6 7/8"         | 4'0 7/8"          | Double Hung   | Wood     | Triple Pane |            |          |           |             |           | Replacement  |   |
| W-09 | 3*    | 1st      | 4'1 3/4"        | 7'8"        | 4'0 3/4"         | 4'0 1/2"          | Double Hung   | Wood     | Triple Pane |            |          |           |             |           | Replacement  | *Add/Alt. #1 replace one window with door, See door schedule X-04 - door, transom, & sidelite |
| W-10 | 1     | 2nd      | 4'7 3/4"        | 6'9 1/2"    | 4'1 1/4"         | 3'5 1/8"          | Double Hung   | Wood     | Double Pane |            |          |           |             |           | New Historic | To match profile, material, & finish  |
| W-11 | 3     | 2nd      | 4'5"            | 6'9 1/2"    | 4'0"             | 3'5 5/8"          | Double Hung   | Wood     | Double Pane |            |          |           |             |           | New Historic | Curved Glass & Frame - to match profile, material, & finish                                   |
| W-12 | 1     | 2nd      | 4'3"            | 6'8"        | 4'6 3/4"         | 3'5 1/4"          | Double Hung   | Wood     | Triple Pane |            |          |           |             |           | Replacement  |   |
| W-13 | 1     | 2nd      | 2'7 1/2"        | 5'5"        | 2'6 5/8"         | 2'10 7/8"         | Double Hung   | Wood     | Triple Pane |            |          |           |             |           | Replacement  | Remove existing window, infill with brick to match adjacent                                   |
| W-14 | 3     | 2nd      | 4'2"            | 6'5"        | 4'0 3/4"         | 3'5"              | Double Hung   | Wood     | Triple Pane |            |          |           |             |           | Replacement  |   |
| W-15 | 1     | 3rd      | 4'7 1/2"        | 5'7 1/2"    | 4'1 5/8"         | 2'10 3/4"         | Double Hung   | Wood     | Double Pane |            |          |           |             |           | New Historic | To match profile, material, & finish  |
| W-16 | 3     | 3rd      | 4'5 1/2"        | 5'8 1/2"    | 4'0"             | 2'10 7/8"         | Double Hung   | Wood     | Double Pane |            |          |           |             |           | New Historic | Curved Glass & Frame - to match profile, material, & finish                                   |
| W-17 | 1     | 3rd      | 4'11"           | 5'7"        | 4'6 3/4"         | 2'11"             | Double Hung   | Wood     | Triple Pane |            |          |           |             |           | Replacement  |   |
| W-18 | 2     | 3rd      | 2'3"            | 4'5"        | 2'6 3/4"         | 2'4 5/8"          | Double Hung   | Wood     | Triple Pane |            |          |           |             |           | Replacement  |   |
| W-19 | 1     | 3rd      | 16" Diameter    | NA          |                  |                   | Circular      | Wood     | Double Pane |            |          |           |             |           | New Historic | Circular Window - to match profile, material, & finish  |
| W-20 | 2     | 3rd      | 4'8"            | 5'6"        | 4'6 7/8"         | 2'11"             | Double Hung   | Wood     | Triple Pane |            |          |           |             |           | Replacement  |   |
| W-21 | 1     | 4th      | 3'2 1/2"        | 3'9"        | 3'2 1/2"         | 1'11 5/8"         | Double Hung   | Wood     | Triple Pane |            |          |           |             |           | Replacement  |   |
| W-22 | 2     | 4th      | 3'2 1/2"        | 3'9 1/4"    | 3'2 3/4"         | 2'0 1/2"          | Double Hung   | Wood     | Triple Pane |            |          |           |             |           | Replacement  |   |
| W-23 | 1     | 4th      | 4'6"            | 4'4"        | 4'6 7/8"         | 2'4 1/8"          | Double Hung   | Wood     | Triple Pane |            |          |           |             |           | Replacement  |   |
| W-24 | 2     | 4th      | 2'10"           | 4'3"        | 2'6 3/4"         | 2'3 3/4"          | Double Hung   | Wood     | Triple Pane |            |          |           |             |           | Replacement  |   |
| W-25 | 3     | 4th      | 3'5"            | 4'4 1/2"    | 3'3 3/4"         | 2'4"              | Double Hung   | Wood     | Triple Pane |            |          |           |             |           | Replacement  |   |
| W-26 | 3     | Roof     | 1'9 1/2"        | 2'3 3/8"    | NA               | NA                | Skylight      | Alu/Wood | Double Pane |            |          | 1'9"      | 2'2 7/8"    | New       | FS C01       | Skylight - Fixed, mount type to be roof mounted   |

Notes: \*Curved Glass Dimensions: chord - 44-7/16", depth - 1-1/2", girth - 44-5/8", Field Verify All Rough Openings

**New Interior Window Schedule**

| Mark  | Count | Location | Window Schedule |             | Window Style  |             | Glass     | Openings   |          |           | Window Data |           |             | Comments |               |
|-------|-------|----------|-----------------|-------------|---------------|-------------|-----------|------------|----------|-----------|-------------|-----------|-------------|----------|---------------|
|       |       |          | O.A. Width      | O.A. Height | Configuration | Shape       |           | Egress Win | RO Width | RO Height | Mfr         | Model No. | Accessories |          |               |
| IW-01 | 1     |          | 3'9"            |             | 1'10"         | Fixed Glass | Rectangle |            |          |           |             |           |             |          | Frosted glass |
| IW-02 | 4     |          | 2'8 3/4"        |             | 3'7"          | Fixed Glass | Rectangle |            |          |           |             |           |             |          | Frosted glass |

**Existing Window Schedule see existing elevations for window locations**

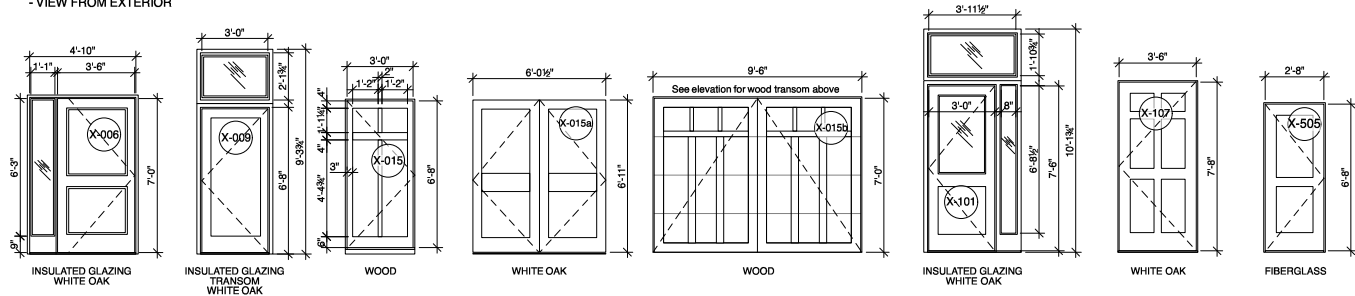
| Mark | Count | Location | Window Schedule         |                      | Window Style  |          | Glass       | Openings    |          |           | Window Data |           |             | Comments    |   |
|------|-------|----------|-------------------------|----------------------|---------------|----------|-------------|-------------|----------|-----------|-------------|-----------|-------------|-------------|---|
|      |       |          | Window Dimension        | Lower Sash Dimension | Configuration | Material |             | Egress Win  | RO Width | RO Height | Mfr         | Model No. | Accessories |             |   |
| W-01 | 2     | Bsmnt    | 4'8" x 3'6 5/8"         |                      | N/A           | Slider   | Wood        | Double Pane |          |           |             |           |             | Replacement |   |
| W-02 | 1     | Bsmnt    | 6'0-1/2" x 5'3" approx. |                      | N/A           | Fixed    | Wood        | Double Pane |          |           |             |           |             | Original    | Upper Transom 2/Vents Running through                       |
| W-03 | 1     | Bsmnt    | 4'2-1/4" x 4'7"         | 3'6-3/4" x 2'2-1/4"  | Double Hung   | Wood     | Double Pane |             |          |           |             |           |             | Replacement |   |
| W-04 | 1     | Bsmnt    | 4'2-1/4" x 6'9"         | 3'6-3/4" x 3'3"      | Double Hung   | Wood     | Double Pane |             |          |           |             |           |             | Replacement |   |
| W-05 | 1     | Bsmnt    | 5'0-1/2" x 6'6-3/4"     | 4'8-7/8" x 3'6"      | Double Hung   | Wood     | Single Pane |             |          |           |             |           |             | Replacement |   |
| W-06 | 2     | Bsmnt    | 5'0" x 5'4"             | 4'8-7/8" x 3'6"      | Double Hung   | Wood     | Single Pane |             |          |           |             |           |             | Replacement |   |
| W-07 | 3     | 1st      | 5'2-3/4" x 9'8-3/4"     | 4'8" x 5'0"          | Double Hung   | Wood     | Single Pane |             |          |           |             |           |             | Original    | Curved Glass & Frame *see note                              |
| W-08 | 1     | 1st      | 5'5-3/4" x 9'7-1/2"     | 5'4-7/8" x 4'8-7/8"  | Double Hung   | Wood     | Double Pane |             |          |           |             |           |             | Replacement |   |
| W-09 | 3     | 1st      | 4'9-3/4" x 9'2"         | 4'8-3/4" x 4'8-1/2"  | Double Hung   | Wood     | Single Pane |             |          |           |             |           |             | Replacement |   |
| W-10 | 1     | 2nd      | 5'5-3/4" x 8'1-1/2"     | 4'9-1/4" x 4'1-1/8"  | Double Hung   | Wood     | Double Pane |             |          |           |             |           |             | Original    |   |
| W-11 | 3     | 2nd      | 5'3" x 8'1-1/2"         | 4'8" x 4'1-5/8"      | Double Hung   | Wood     | Double Pane |             |          |           |             |           |             | Original    | Curved Glass & Frame *see note                              |
| W-12 | 1     | 2nd      | 5'6" x 7'8"             | 5'4-3/4" x 4'1-1/4"  | Double Hung   | Wood     | Double Pane |             |          |           |             |           |             | Replacement |   |
| W-13 | 1     | 2nd      | 3'1-1/2" x 6'5"         | 3'0-5/8" x 3'4-7/8"  | Double Hung   | Wood     | Double Pane |             |          |           |             |           |             | Replacement | Remove existing window, infill with brick to match existing |
| W-14 | 3     | 2nd      | 5'0" x 7'7"             | 4'8-3/4" x 4'1"      | Double Hung   | Wood     | Single Pane |             |          |           |             |           |             | Replacement |   |
| W-15 | 1     | 3rd      | 5'5-1/2" x 6'7-1/2"     | 4'9-5/8" x 3'4-3/4"  | Double Hung   | Wood     | Double Pane |             |          |           |             |           |             | Original    |   |
| W-16 | 3     | 3rd      | 5'3-1/2" x 6'8-1/2"     | 4'8" x 3'4-7/8"      | Double Hung   | Wood     | Single Pane |             |          |           |             |           |             | Original    | Curved Glass & Frame *see note                              |
| W-17 | 1     | 3rd      | 5'9" x 6'7"             | 5'4-3/4" x 3'5"      | Double Hung   | Wood     | Double Pane |             |          |           |             |           |             | Replacement |   |
| W-18 | 2     | 3rd      | 3'2" x 5'3"             | 3'0-3/4" x 2'8-5/8"  | Double Hung   | Wood     | Double Pane |             |          |           |             |           |             | Replacement | Frosted   |
| W-19 | 1     | 3rd      | 16" diameter            | N/A                  | Double Hung   | Wood     | Single Pane |             |          |           |             |           |             | Original    | Circular Window   |
| W-20 | 2     | 3rd      | 5'8" x 6'6"             | 5'4-7/8" x 3'5"      | Double Hung   | Wood     | Single Pane |             |          |           |             |           |             | Replacement |   |
| W-21 | 1     | 4th      | 3'8-1/2" x 4'5"         | 3'8-1/2" x 2'3-5/8"  | Double Hung   | Wood     | Double Pane |             |          |           |             |           |             | Replacement |   |
| W-22 | 2     | 4th      | 3'8-1/2" x 4'5-1/4"     | 3'8-3/4" x 2'4-1/2"  | Double Hung   | Wood     | Double Pane |             |          |           |             |           |             | Replacement |   |
| W-23 | 1     | 4th      | 5'6" x 5'2"             | 5'4-7/8" x 2'8-1/8"  | Double Hung   | Wood     | Double Pane |             |          |           |             |           |             | Replacement |   |
| W-24 | 2     | 4th      | 3'4" x 5'1"             | 3'0-3/4" x 2'7-3/4"  | Double Hung   | Wood     | Double Pane |             |          |           |             |           |             | Replacement | Frosted   |
| W-25 | 3     | 4th      | 4'1" x 5'2-1/2"         | 3'9-3/4" x 2'8"      | Double Hung   | Wood     | Single Pane |             |          |           |             |           |             | Replacement |   |

Notes: \*Curved Glass Dimensions: chord - 44-7/16" depth - 1-1/2" girth - 44-5/8"

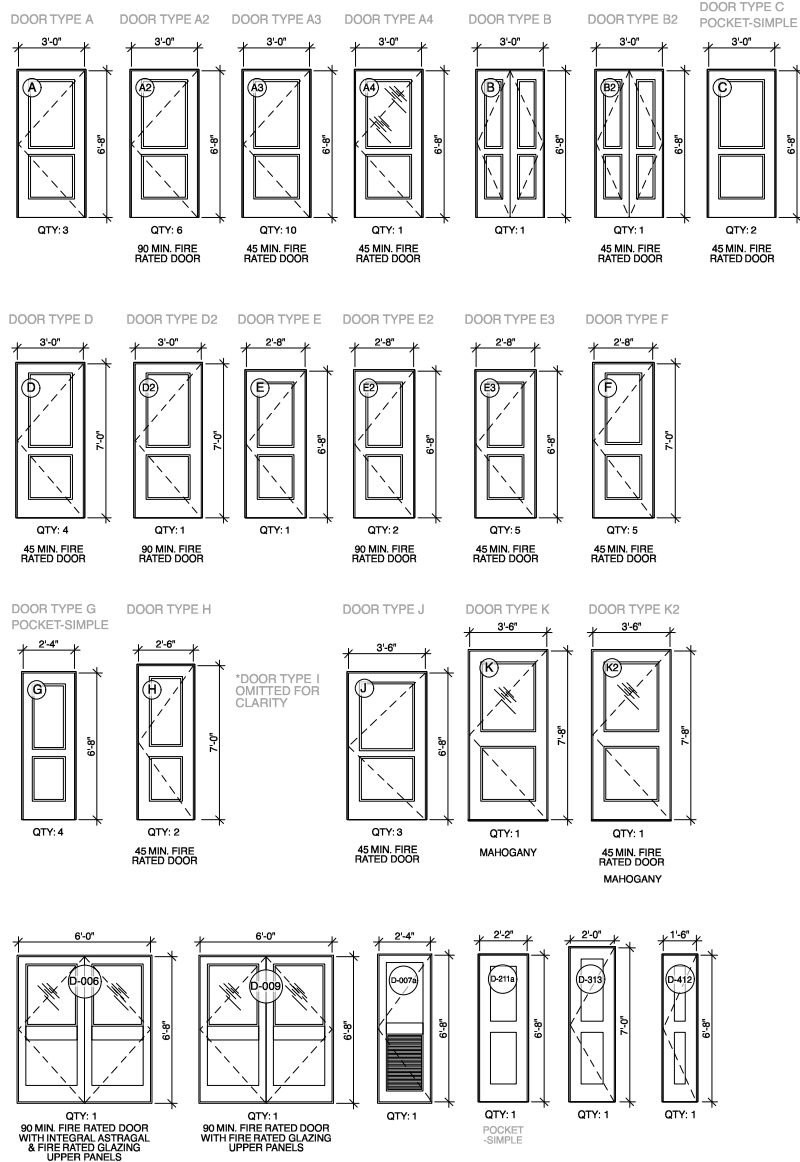


EXTERIOR DOOR SCHEDULE

- VIEW FROM EXTERIOR



NEW DOORS



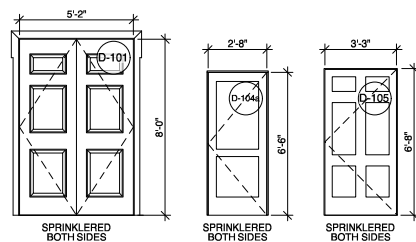
INTERIOR DOOR SCHEDULE

Interior & Exterior Door Schedule

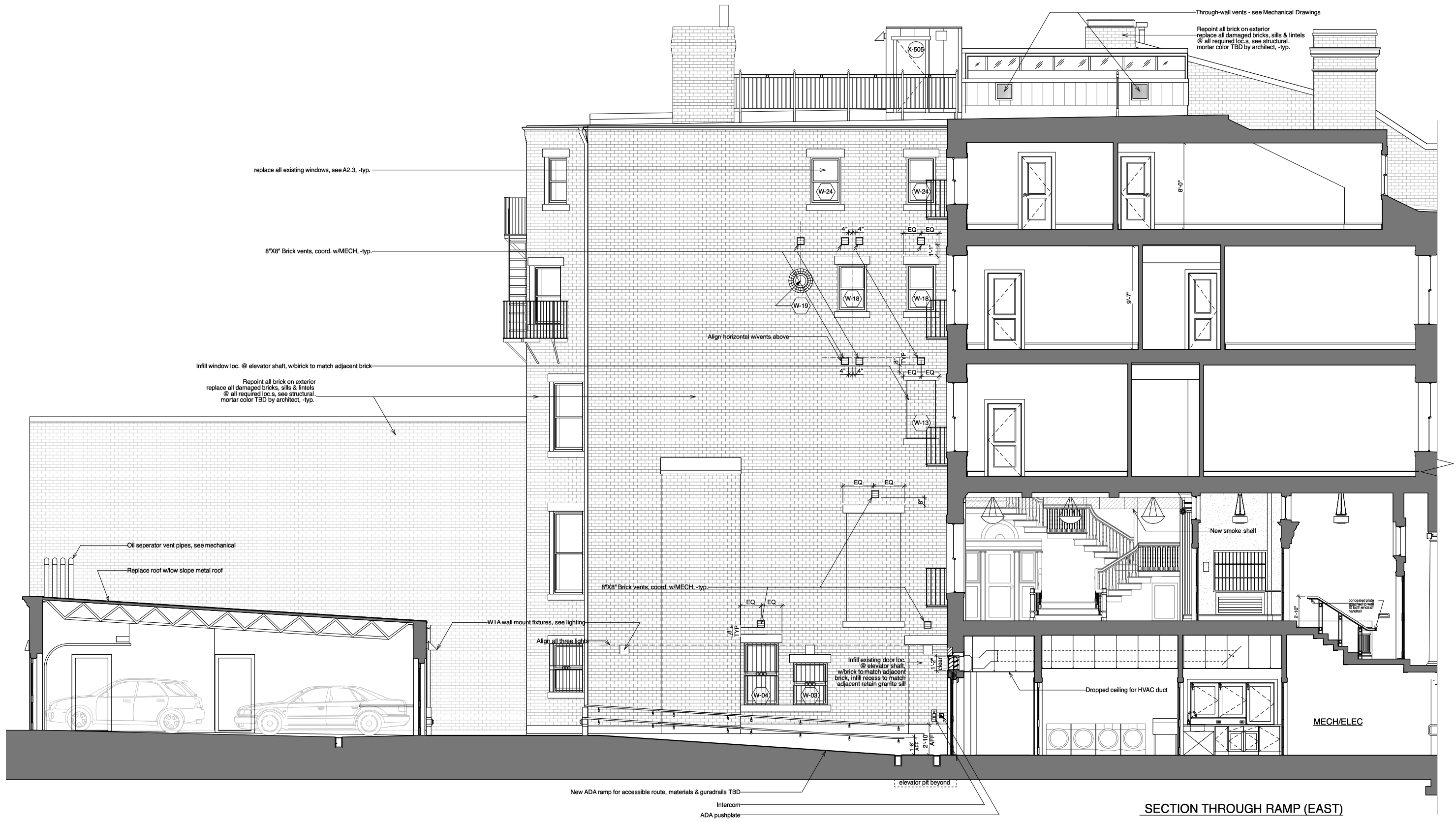
| Item   | Mark | Door Type | Nominal Size |        |               | Configuration      | Door Material | Fire Rating | Door Frame |            | Door Slab | Openings |           | Door Data |               |          | Accessories | Comments                                 |
|--------|------|-----------|--------------|--------|---------------|--------------------|---------------|-------------|------------|------------|-----------|----------|-----------|-----------|---------------|----------|-------------|--|
|        |      |           | Width        | Height | Thickness     |                    |               |             | Lamb Thick | Lamb Depth |           | RO Width | RO Height | Mfr       | Model No.     | HW Set # |             |  |
| D-002  | E    | 28"       | 6'8"         | 1 3/4" | Swing Simple  | Ptd. MDF           |               | Solid       | 3/4"       | 6 1/2"     |           |          |           | Simpson   | 8212 INFINITY | DHW-01   |             |  |
| D-003  | A    | 30"       | 6'8"         | 1 3/4" | Swing Simple  | Ptd. MDF           |               | Solid       | 3/4"       | 4 1/2"     |           |          |           | Simpson   | 8212 INFINITY | DHW-17   |             |  |
| D-004  | A2   | 30"       | 6'8"         | 1 3/4" | Swing Simple  | Ptd. MDF           | 90 min        | Solid       | 3/4"       | 6"         | 90 min    |          |           | Simpson   | 8212 INFINITY | DHW-02   |             |  |
| D-005  | A2   | 30"       | 6'8"         | 1 3/4" | Swing Simple  | Ptd. MDF           | 90 min        | Solid       | 3/4"       | 5 1/2"     | 90 min    |          |           | Simpson   | 8212 INFINITY | DHW-03   |             |  |
| D-006  | E2   | 28"       | 6'8"         | 1 3/4" | Complex Swing | Ptd. MDF/Glass     | 90 min        | Custom      | 3/4"       | 6"         | 90 min    |          |           | Simpson   | 8212 INFINITY | DHW-05   |             |  |
| D-007  | E2   | 28"       | 6'8"         | 1 3/4" | Swing Simple  | Ptd. MDF           | 90 min        | Solid       | 3/4"       | 6"         | 90 min    |          |           | Simpson   | 8212 INFINITY | DHW-17   |             |  |
| D-007a | E2   | 24"       | 6'8"         | 1 3/4" | Swing Simple  | Ptd. MDF           | 90 min        | Custom      | 3/4"       | 6 1/2"     | 90 min    |          |           | Simpson   | 8212 INFINITY | DHW-08   |             | Wood Louver Lower Panel                  |
| D-009  | E2   | 24"       | 6'8"         | 1 3/4" | Swing Bi-part | Ptd. MDF/Glass     | 90 min        | Custom      | 3/4"       | 6"         | 90 min    |          |           | Simpson   | 8212 INFINITY | DHW-27   |             |  |
| D-009a | B    | 30"       | 6'8"         | 1 3/4" | Swing Bi-part | Ptd. MDF           |               | Solid       | 3/4"       | 5"         |           |          |           | Simpson   | 8212 INFINITY | DHW-10   |             |  |
| D-010  | A2   | 30"       | 6'8"         | 1 3/4" | Swing Simple  | Ptd. MDF           | 90 min        | Solid       | 3/4"       | 8"         | 90 min    |          |           | Simpson   | 8212 INFINITY | DHW-13   |             |  |
| D-011  | A2   | 30"       | 6'8"         | 1 3/4" | Swing Simple  | Ptd. MDF           | 90 min        | Solid       | 3/4"       | 4 3/4"     | 90 min    |          |           | Simpson   | 8212 INFINITY | DHW-13   |             |  |
| D-013  | A3   | 30"       | 6'8"         | 1 3/4" | Swing Simple  | Ptd. MDF           | 45 min        | Solid       | 3/4"       | 6"         | 45 min    |          |           | Simpson   | 8212 INFINITY | DHW-02   |             |  |
| D-015  | A    | 30"       | 6'8"         | 1 3/4" | Swing Simple  | Ptd. MDF           |               | Solid       | 3/4"       | 6"         |           |          |           | Simpson   | 8212 INFINITY | DHW-09   |             |  |
| D-015a | A    | 30"       | 6'8"         | 1 3/4" | Swing Simple  | Ptd. MDF           |               | Solid       | 3/4"       | 6"         |           |          |           | Simpson   | 8212 INFINITY | DHW-28   |             |  |
| D-101  | Ext  | 52"       | 80 1/2"      | 1 3/4" | Swing Bi-part | Existing           |               | Solid       | 3/4"       | 4 3/4"     |           |          |           |           |               |          |             | DHW-06                                   |
| D-102  | A3   | 30"       | 6'8"         | 1 3/4" | Swing Simple  | Ptd. MDF           | 45 min        | Solid       | 3/4"       | 4 3/4"     | 45 min    |          |           | Simpson   | 8212 INFINITY | DHW-17   |             | Sprinklered Both Sides of Historic Doors |
| D-103  | A2   | 30"       | 6'8"         | 1 3/4" | Swing Simple  | Ptd. MDF           | 90 min        | Solid       | 3/4"       | 5 1/2"     | 90 min    |          |           | Simpson   | 8212 INFINITY | DHW-03   |             |  |
| D-104  | K2   | 30"       | 7'8"         | 1 3/4" | Swing Simple  | Ptd. MDF/Glass     | 45 min        | Custom      | 3/4"       | 6"         | 45 min    |          |           | Simpson   | 8212 INFINITY | DHW-03   |             |  |
| D-104a | Ext  | 28"       | 6'8"         | 1 3/4" | Swing Simple  | Existing           |               | Solid       | 3/4"       | 4 1/2"     |           |          |           |           |               |          |             | DHW-04                                   |
| D-105  | Ext  | 33 3/4"   | 82"          | 1 3/4" | Swing Simple  | Existing           |               | Solid       | 3/4"       | 11"        |           |          |           |           |               |          |             | DHW-29                                   |
| D-106  | K    | 30"       | 7'8"         | 1 3/4" | Swing Simple  | White Oak/Glass    |               | Custom      | 3/4"       | 8"         |           |          |           |           |               |          |             | DHW-26                                   |
| D-201  | A3   | 30"       | 6'8"         | 1 3/4" | Swing Simple  | Ptd. MDF           | 45 min        | Solid       | 3/4"       | 4 3/4"     | 45 min    |          |           | Simpson   | 8212 INFINITY | DHW-11   |             |  |
| D-202  | A3   | 30"       | 6'8"         | 1 3/4" | Swing Simple  | Ptd. MDF           | 45 min        | Solid       | 3/4"       | 4 3/4"     | 45 min    |          |           | Simpson   | 8212 INFINITY | DHW-17   |             |  |
| D-203  | E2   | 28"       | 6'8"         | 1 3/4" | Swing Simple  | Ptd. MDF           | 90 min        | Solid       | 3/4"       | 5 1/2"     | 90 min    |          |           | Simpson   | 8212 INFINITY | DHW-03   |             |  |
| D-204  | J    | 30"       | 6'8"         | 1 3/4" | Swing Simple  | Ptd. MDF           | 45 min        | Solid       | 3/4"       | 5"         | 45 min    |          |           | Simpson   | 8212 INFINITY | DHW-14   |             |  |
| D-205  | A3   | 30"       | 6'8"         | 1 3/4" | Swing Simple  | Ptd. MDF           | 45 min        | Solid       | 3/4"       | 5 1/2"     | 45 min    |          |           | Simpson   | 8212 INFINITY | DHW-11   |             |  |
| D-207  | A3   | 30"       | 6'8"         | 1 3/4" | Swing Simple  | Ptd. MDF           | 45 min        | Solid       | 3/4"       | 5"         | 45 min    |          |           | Simpson   | 8212 INFINITY | DHW-14   |             |  |
| D-208  | C    | 30"       | 6'8"         | 1 3/4" | Pocket Simple | Ptd. MDF           | 45 min        | Solid       | 3/4"       | 6 3/4"     | 45 min    |          |           | Simpson   | 8212 INFINITY | DHW-16   |             |  |
| D-209  | C    | 30"       | 6'8"         | 1 3/4" | Pocket Simple | Ptd. MDF           | 45 min        | Solid       | 3/4"       | 7 3/8"     | 45 min    |          |           | Simpson   | 8212 INFINITY | DHW-16   |             |  |
| D-210  | A3   | 30"       | 6'8"         | 1 3/4" | Swing Simple  | Ptd. MDF           | 45 min        | Solid       | 3/4"       | 4 3/4"     | 45 min    |          |           | Simpson   | 8212 INFINITY | DHW-11   |             |  |
| D-211  | E3   | 28"       | 6'8"         | 1 3/4" | Swing Simple  | Ptd. MDF           | 45 min        | Solid       | 3/4"       | 4 3/4"     | 45 min    |          |           | Simpson   | 8212 INFINITY | DHW-17   |             |  |
| D-211a | E3   | 22"       | 6'8"         | 1 3/4" | Pocket Simple | Ptd. MDF           |               | Solid       | 3/4"       | 6 1/2"     |           |          |           | Simpson   | 8212 INFINITY | DHW-15   |             |  |
| D-301  | D    | 30"       | 7'0"         | 1 3/4" | Swing Simple  | Ptd. MDF           | 45 min        | Solid       | 3/4"       | 5 1/2"     | 45 min    |          |           | Simpson   | 8212 INFINITY | DHW-11   |             |  |
| D-302  | F    | 28"       | 7'0"         | 1 3/4" | Swing Simple  | Ptd. MDF           | 45 min        | Solid       | 3/4"       | 4 3/4"     | 45 min    |          |           | Simpson   | 8212 INFINITY | DHW-17   |             |  |
| D-302a | G    | 24"       | 6'8"         | 1 3/4" | Pocket Simple | Ptd. MDF           |               | Solid       | 3/4"       | 5"         |           |          |           | Simpson   | 8212 INFINITY | DHW-15   |             |  |
| D-303  | F    | 28"       | 7'0"         | 1 3/4" | Swing Simple  | Ptd. MDF           | 45 min        | Solid       | 3/4"       | 4 3/4"     | 45 min    |          |           | Simpson   | 8212 INFINITY | DHW-17   |             |  |
| D-303a | G    | 24"       | 6'8"         | 1 3/4" | Pocket Simple | Ptd. MDF           |               | Solid       | 3/4"       | 5"         |           |          |           | Simpson   | 8212 INFINITY | DHW-15   |             |  |
| D-304  | D2   | 30"       | 7'0"         | 1 3/4" | Swing Simple  | Ptd. MDF           | 90 min        | Solid       | 3/4"       | 5 1/2"     | 90 min    |          |           | Simpson   | 8212 INFINITY | DHW-03   |             |  |
| D-305  | D    | 30"       | 7'0"         | 1 3/4" | Swing Simple  | Ptd. MDF           | 45 min        | Solid       | 3/4"       | 5 1/2"     | 45 min    |          |           | Simpson   | 8212 INFINITY | DHW-14   |             |  |
| D-307  | D    | 30"       | 7'0"         | 1 3/4" | Swing Simple  | Ptd. MDF           | 45 min        | Solid       | 3/4"       | 6"         | 45 min    |          |           | Simpson   | 8212 INFINITY | DHW-11   |             |  |
| D-308  | D    | 30"       | 7'0"         | 1 3/4" | Swing Simple  | Ptd. MDF           | 45 min        | Solid       | 3/4"       | 4 3/4"     | 45 min    |          |           | Simpson   | 8212 INFINITY | DHW-14   |             |  |
| D-309  | F    | 28"       | 7'0"         | 1 3/4" | Swing Simple  | Ptd. MDF           | 45 min        | Solid       | 3/4"       | 4 3/4"     | 45 min    |          |           | Simpson   | 8212 INFINITY | DHW-11   |             |  |
| D-310  | F    | 28"       | 7'0"         | 1 3/4" | Swing Simple  | Ptd. MDF           | 45 min        | Solid       | 3/4"       | 4 3/4"     | 45 min    |          |           | Simpson   | 8212 INFINITY | DHW-11   |             |  |
| D-311  | F    | 28"       | 7'0"         | 1 3/4" | Swing Simple  | Ptd. MDF           | 45 min        | Solid       | 3/4"       | 4 3/4"     | 45 min    |          |           | Simpson   | 8212 INFINITY | DHW-11   |             |  |
| D-312  | H    | 28"       | 7'0"         | 1 3/4" | Swing Simple  | Ptd. MDF           | 45 min        | Solid       | 3/4"       | 4 3/4"     | 45 min    |          |           | Simpson   | 8212 INFINITY | DHW-17   |             |  |
| D-313  | H    | 20"       | 7'0"         | 1 3/4" | Swing Simple  | Ptd. MDF           | 45 min        | Solid       | 3/4"       | 4 3/4"     | 45 min    |          |           | Simpson   | 8212 INFINITY | DHW-07   |             |  |
| D-314  | H    | 26"       | 7'0"         | 1 3/4" | Swing Simple  | Ptd. MDF           | 45 min        | Solid       | 3/4"       | 4 3/4"     | 45 min    |          |           | Simpson   | 8212 INFINITY | DHW-07   |             |  |
| D-401  | A3   | 30"       | 6'8"         | 1 3/4" | Swing Simple  | Ptd. MDF           | 45 min        | Solid       | 3/4"       | 4 3/4"     | 45 min    |          |           | Simpson   | 8212 INFINITY | DHW-11   |             |  |
| D-402  | A3   | 30"       | 6'8"         | 1 3/4" | Swing Simple  | Ptd. MDF           | 45 min        | Solid       | 3/4"       | 4 3/4"     | 45 min    |          |           | Simpson   | 8212 INFINITY | DHW-11   |             |  |
| D-403  | E3   | 28"       | 6'8"         | 1 3/4" | Swing Simple  | Ptd. MDF           | 45 min        | Solid       | 3/4"       | 5 1/2"     | 45 min    |          |           | Simpson   | 8212 INFINITY | DHW-17   |             |  |
| D-403a | G    | 24"       | 6'8"         | 1 3/4" | Pocket Simple | Ptd. MDF           |               | Solid       | 3/4"       | 5"         |           |          |           | Simpson   | 8212 INFINITY | DHW-15   |             |  |
| D-404  | E3   | 28"       | 6'8"         | 1 3/4" | Swing Simple  | Ptd. MDF           | 45 min        | Solid       | 3/4"       | 5 1/2"     | 45 min    |          |           | Simpson   | 8212 INFINITY | DHW-17   |             |  |
| D-404a | G    | 24"       | 6'8"         | 1 3/4" | Pocket Simple | Ptd. MDF           |               | Solid       | 3/4"       | 5"         |           |          |           | Simpson   | 8212 INFINITY | DHW-15   |             |  |
| D-405  | A2   | 30"       | 6'8"         | 1 3/4" | Swing Simple  | Ptd. MDF           | 90 min        | Solid       | 3/4"       | 5"         | 90 min    |          |           | Simpson   | 8212 INFINITY | DHW-03   |             |  |
| D-406  | J    | 30"       | 6'8"         | 1 3/4" | Swing Simple  | Ptd. MDF           | 45 min        | Solid       | 3/4"       | 5"         | 45 min    |          |           | Simpson   | 8212 INFINITY | DHW-14   |             |  |
| D-406a | J    | 30"       | 6'8"         | 1 3/4" | Swing Simple  | Ptd. MDF           | 45 min        | Solid       | 3/4"       | 4 3/4"     | 45 min    |          |           | Simpson   | 8212 INFINITY | DHW-13   |             |  |
| D-407  | E3   | 28"       | 6'8"         | 1 3/4" | Swing Simple  | Ptd. MDF           | 45 min        | Solid       | 3/4"       | 4 3/4"     | 45 min    |          |           | Simpson   | 8212 INFINITY | DHW-11   |             |  |
| D-408  | A4   | 30"       | 6'8"         | 1 3/4" | Swing Simple  | Ptd. MDF/Glass     | 45 min        | Custom      | 3/4"       | 5"         | 45 min    |          |           | Simpson   | 8212 INFINITY | DHW-12   |             | Frosted Glass Panel                      |
| D-408  | A3   | 30"       | 6'8"         | 1 3/4" | Swing Simple  | Ptd. MDF           | 45 min        | Solid       | 3/4"       | 4 3/4"     | 45 min    |          |           | Simpson   | 8212 INFINITY | DHW-11   |             |  |
| D-410  | E3   | 28"       | 6'8"         | 1 3/4" | Swing Simple  | Ptd. MDF           | 45 min        | Solid       | 3/4"       | 5"         | 45 min    |          |           | Simpson   | 8212 INFINITY | DHW-11   |             |  |
| D-411  | B2   | 30"       | 6'8"         | 1 3/4" | Swing Bi-part | Ptd. MDF           | 45 min        | Solid       | 3/4"       | 4 3/4"     | 45 min    |          |           | Simpson   | 8212 INFINITY | DHW-26   |             |  |
| D-412  | B2   | 30"       | 6'8"         | 1 3/4" | Swing Bi-part | Ptd. MDF           | 45 min        | Solid       | 3/4"       | 5"         | 45 min    |          |           | Simpson   | 8212 INFINITY | DHW-07   |             |  |
| X-006  |      | 30"       | 7'0"         | 1 3/4" | Swing Simple  | White Oak          |               | Solid       | 3/4"       | 11"        | 17 3/8"   |          |           |           |               |          |             | DHW-24                                   |
| X-009  |      | 30"       | 6'8"         | 1 3/4" | Swing Simple  | White Oak          |               | Solid       | 3/4"       | 6 5/8"     |           |          |           |           |               |          |             | DHW-24                                   |
| X-015  |      | 30"       | 6'8"         | 1 3/4" | Swing Simple  | Rift cut White Oak |               | Solid       | 2"         | 12 1/4"    |           |          |           | Simpson   | 762           |          |             | DHW-23                                   |
| X-015a |      | 6'0"      | 6'11"        | 1 3/4" | Complex Swing | White Oak          |               | Solid       | 2"         | 12 1/4"    |           |          |           |           |               |          |             | DHW-21                                   |
| X-015b |      | 9'6"      | 7'0"         | 1 3/4" | Overhead      | Wood               |               | Custom      | 3/4"       | 12 1/4"    |           |          |           |           |               |          |             | DHW-18                                   |
| X-101  |      | 30"       | 7'6"         | 1 3/4" | Swing Simple  | White Oak/Glass    |               | Custom      | 3/4"       | 6 1/2"     |           |          |           |           |               |          |             | DHW-20                                   |
| X-107  |      | 30"       | 7'8"         | 1 3/4" | Swing Simple  | White Oak          |               | Solid       | 3/4"       | 8"         |           |          |           |           |               |          |             | DHW-22                                   |
| X-505  |      | 28"       | 6'8"         | 1 3/4" | Swing Simple  | Fiberglass         |               | Solid       | 3/4"       | 5 1/2"     |           |          |           | ThermaTru | S220          |          |             | DHW-19                                   |

EXISTING DOORS TO BE REFURBISHED

SEE DOOR SCHEDULE FOR DETAIL



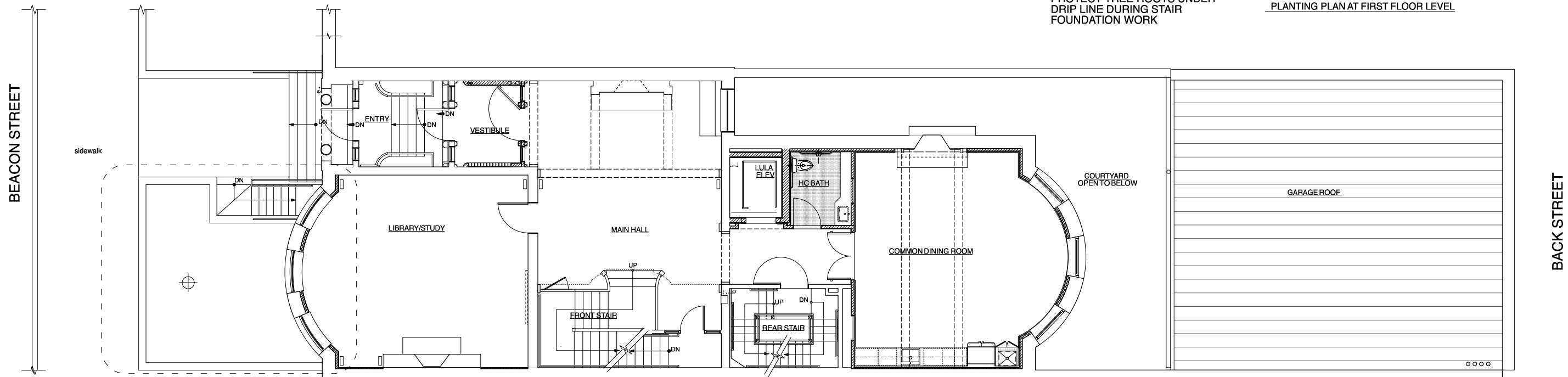
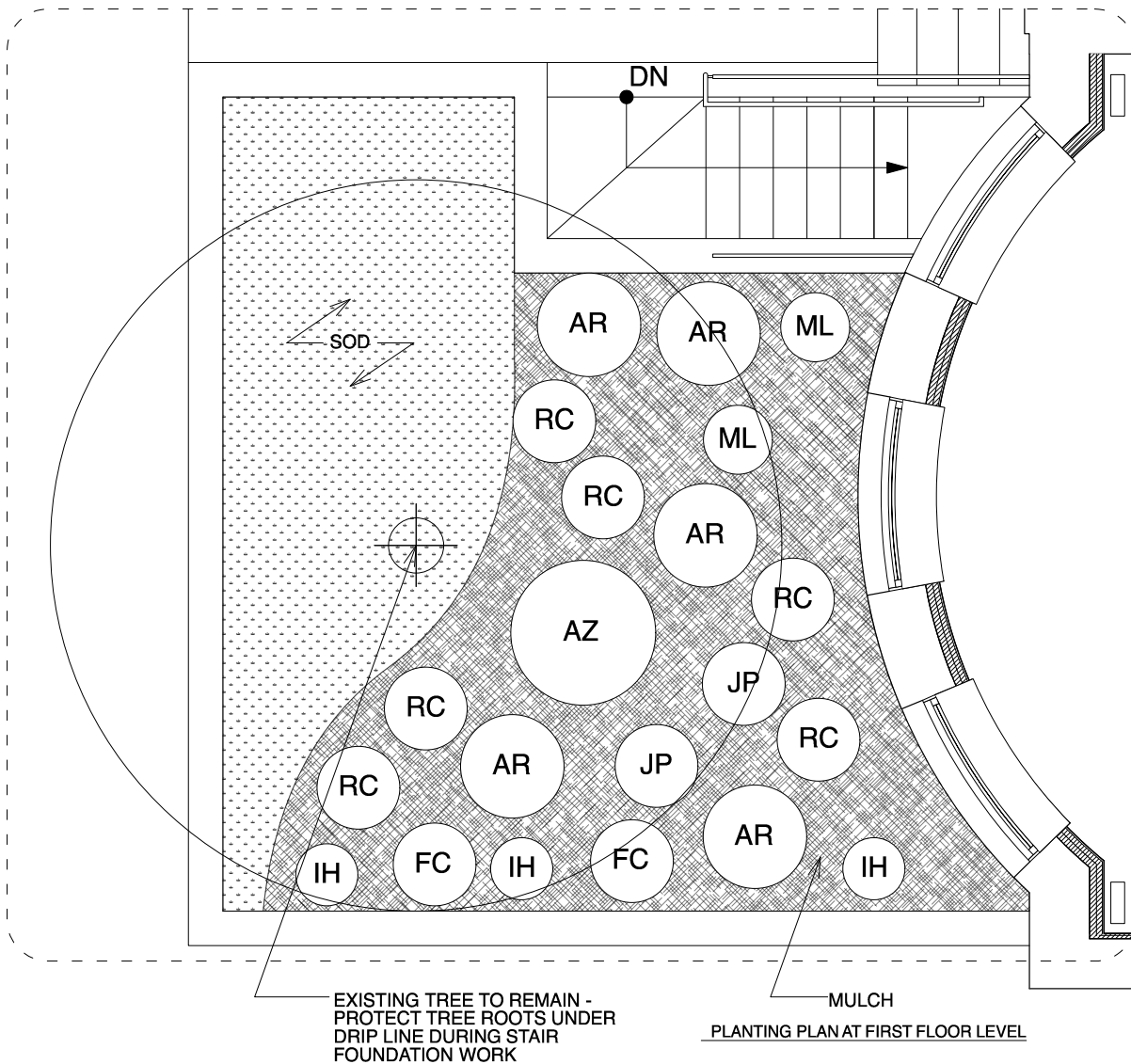
1. ALL R.O. TO BE FIELD VERIFIED
2. ALL NEW DOORS IN RATED WALL ASSEMBLIES TO HAVE SMOKE SEALS
3. ALL EXISTING SIDELIGHTS AND TRANSOMS TO BE REMOVED, SAFELY STORED, CLEAN & REINSTALLED W/ NEW CAULKING. REUSE EXISTING STOPS OR REPLACE W/ SAME PROFILE IF DAMAGED
4. ALL NEW DOORS IN EXISTING FRAMES TO HAVE DIMENSIONS FIELD VERIFIED BY CONTRACTOR PRIOR TO FABRICATION



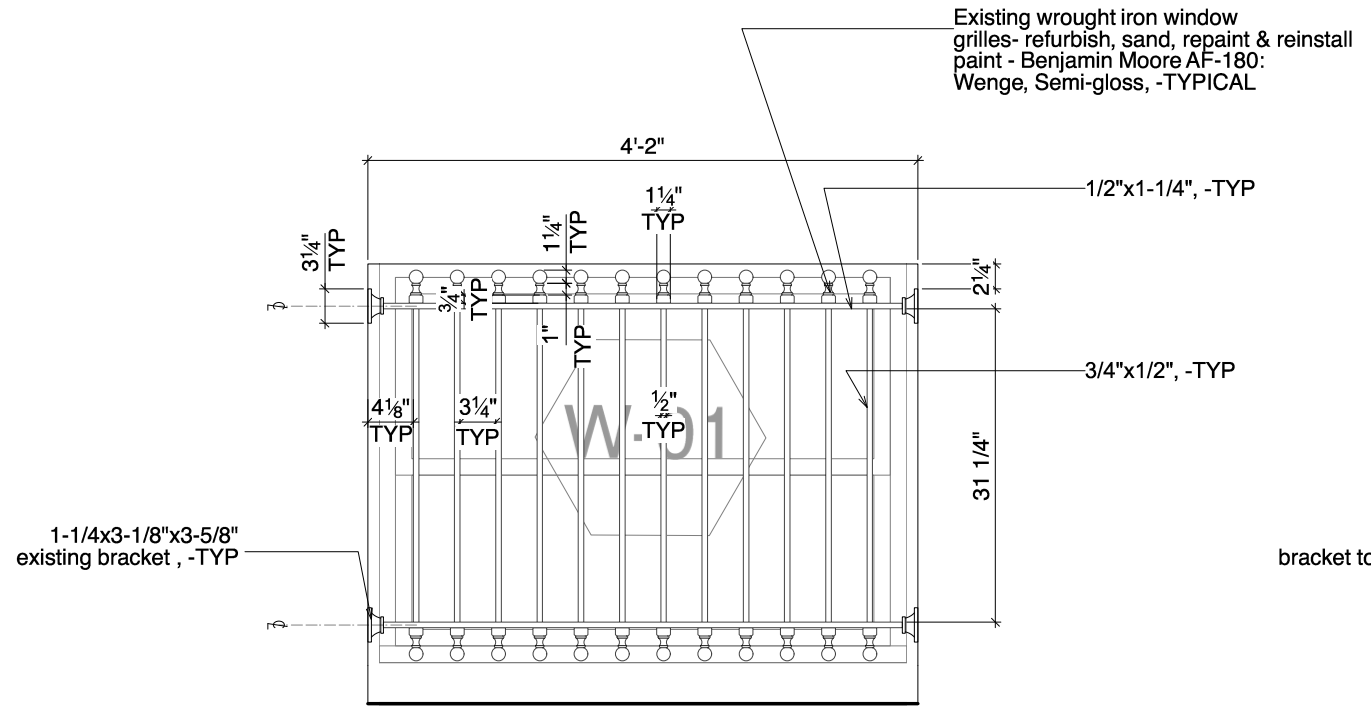
| Plant Schedule |      |   |                                    |      |
|----------------|------|---|------------------------------------|------|
| Qty.           | Code | Botanical Name                              | Common Name                        | Size |
| 7              | RC   | <i>Microbiota decussata</i>                 | Russian Cypress                    |      |
| 6              | AR   | <i>Thuja occidentalis</i> 'Anna Van Vloten' | Anna's Magic Ball® Arborvitae      |      |
| 2              | ML   | <i>Kalmia latifolia</i> 'Elf'               | Elf Mountain Laurel                |      |
| 2              | JP   | <i>Pieris japonica</i> 'Little Heath Green' | Little Heath Green Japanese Pieris |      |
| 1              | AZ   | <i>Rhododendron</i> 'Gumpo White'           | Gumpo White Azalea                 |      |
| 3              | IH   | <i>Ilex glabra</i> 'Shamrock'               | Shamrock Inkberry Holly            |      |
| 2              | FC   | <i>Chamaecyparis obtusa</i> 'Kamaeni Hiba'  | Kamaeni Hiba Hinoki Falsecypress   |      |

**GENERAL NOTE:**

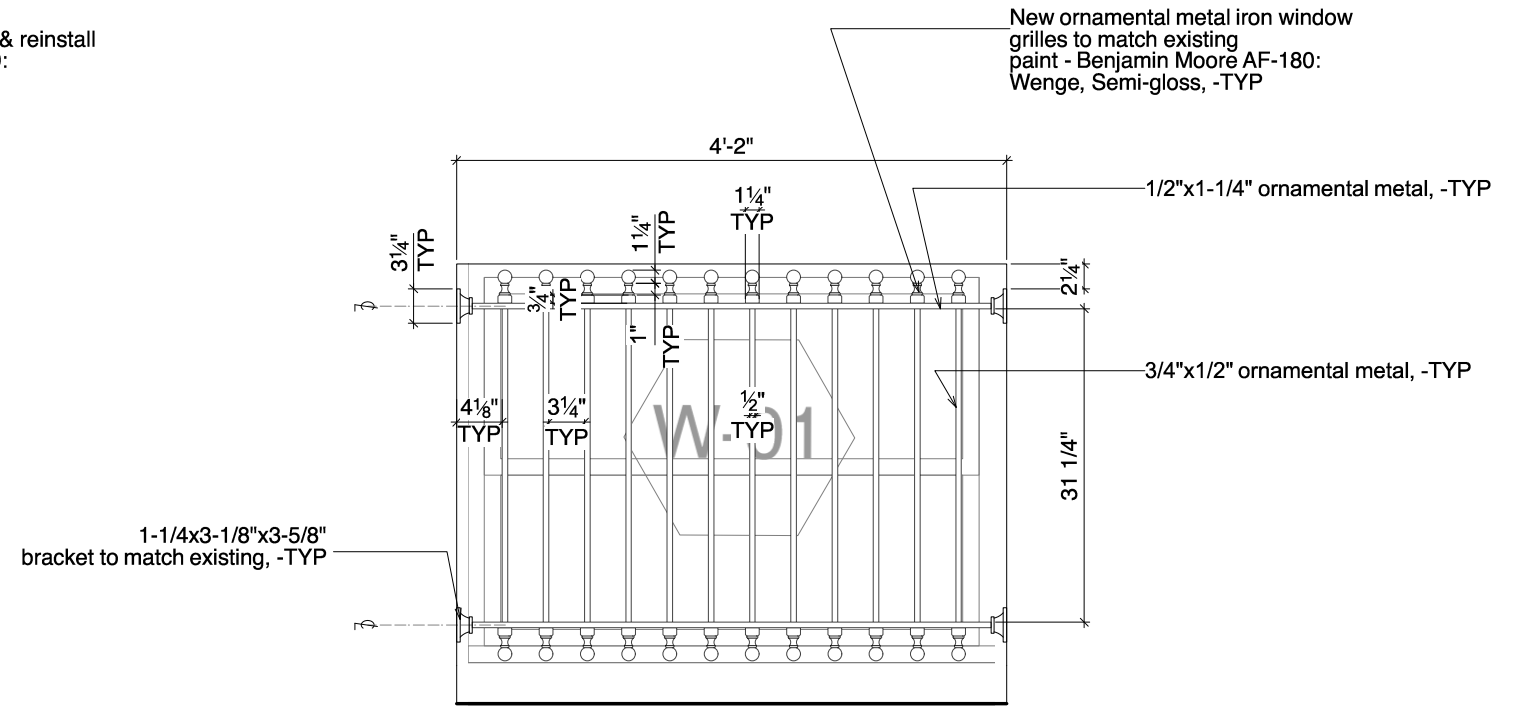
1. Remove any existing plantings.
2. Review final planting locations with Landscape Designer prior to planting.
3. Plants should be in five gallon containers or larger, Russian Cypress and Arborvitae should be 3 gallon containers.
4. Install sod at location on plan. Landscape contractor to be responsible for watering sod until it takes.
5. Lay down filter fabric where all bushes are.
6. Mulch planted area heavily with natural Hemlock mulch – no dyes.
7. Landscape contractor to guarantee all plants for one year.
8. G.C. to contact Owner for final planting locations.



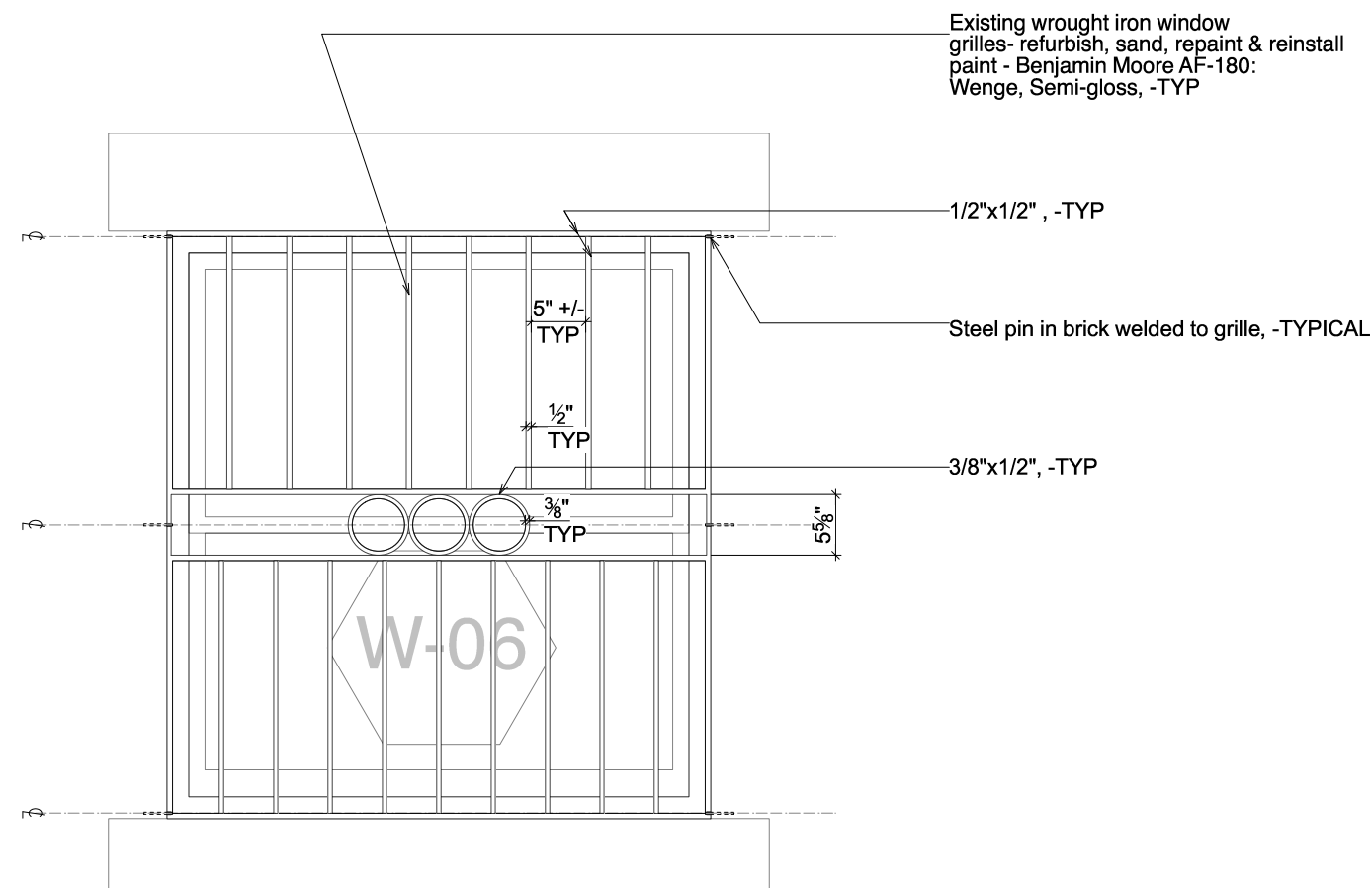
SITE PLAN AT FIRST FLOOR LEVEL



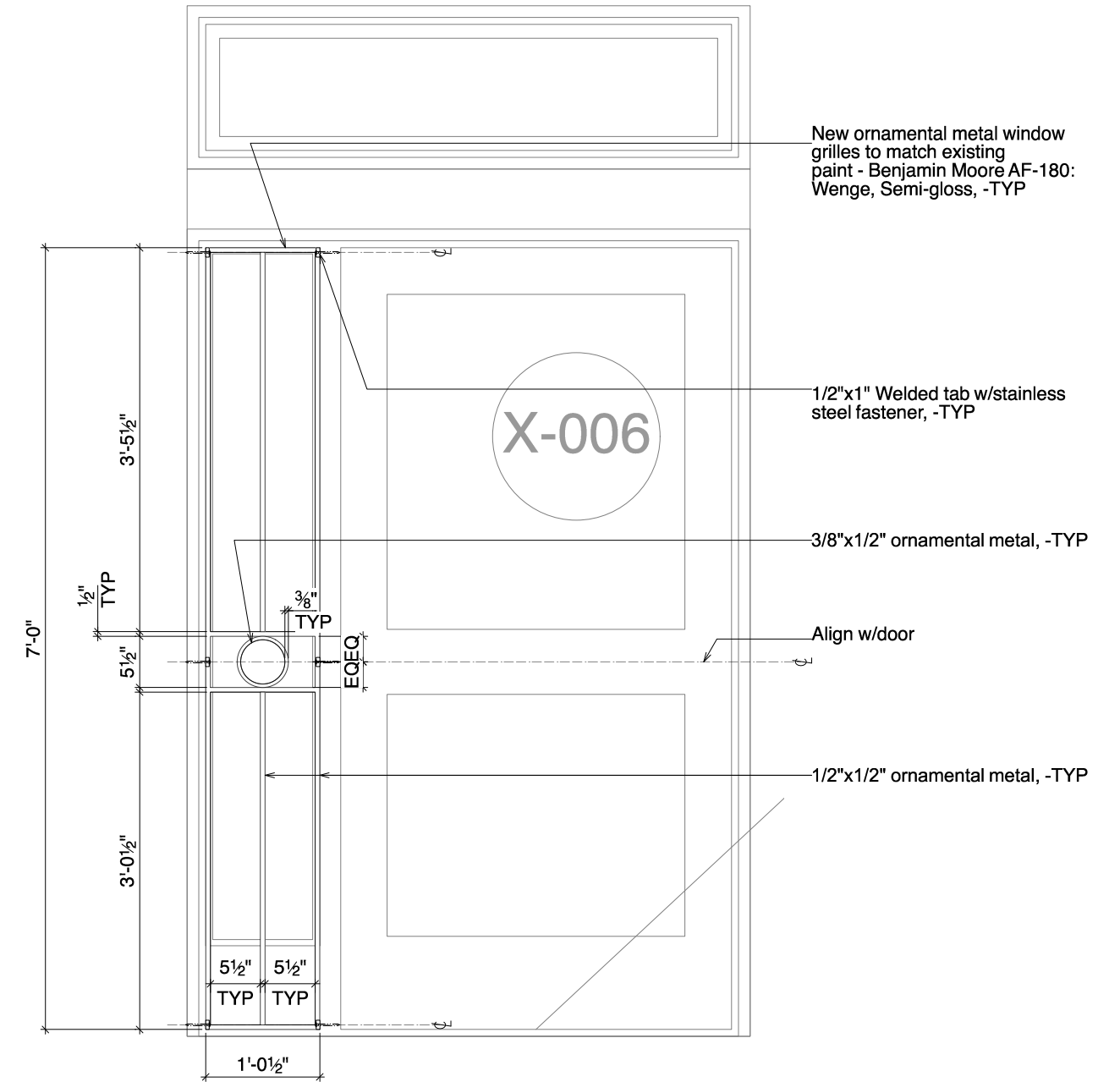
EXISTING WINDOW GRILLE @ (FRONT BASEMENT)



NEW WINDOW GRILLE @ W-01 (FRONT BASEMENT)



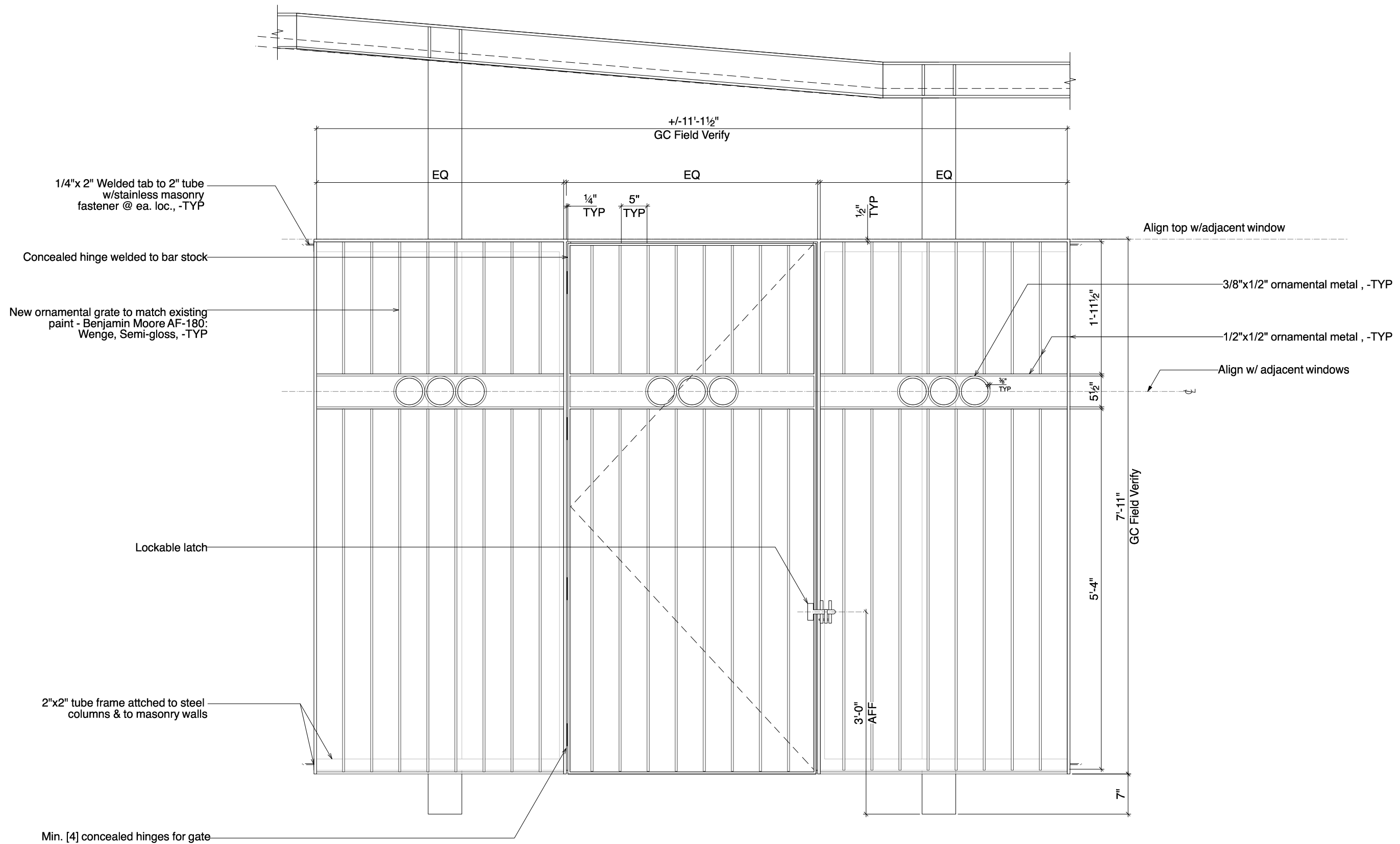
TYPICAL EXISTING WINDOW GRILLE @ W-06 (REAR BASEMENT)



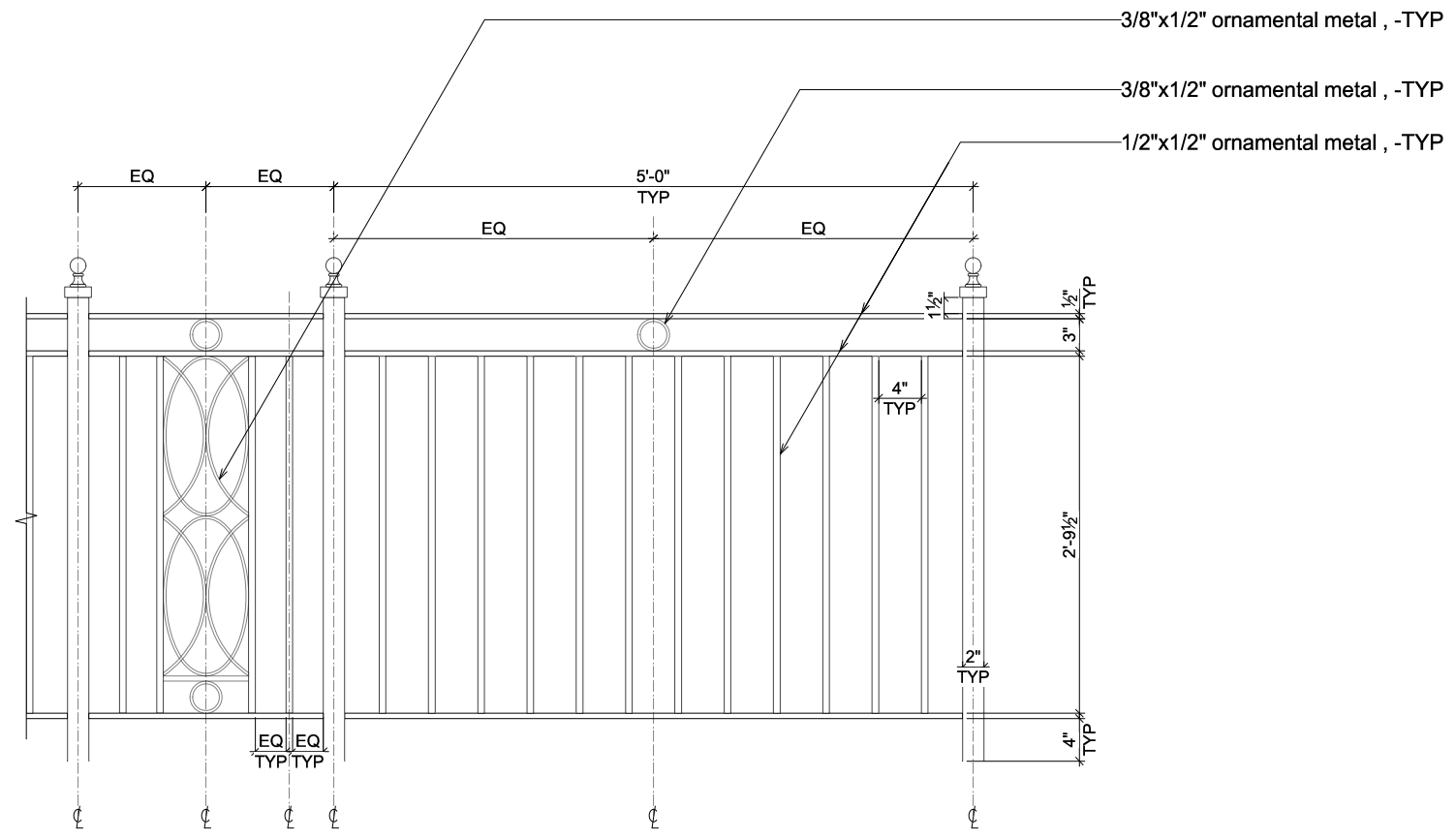
PROPOSED BASEMENT ENTRY GRILLE PANEL

EXISTING TYPICAL REAR WINDOW GRILLE & NEW BASEMENT ENTRY GRILLE

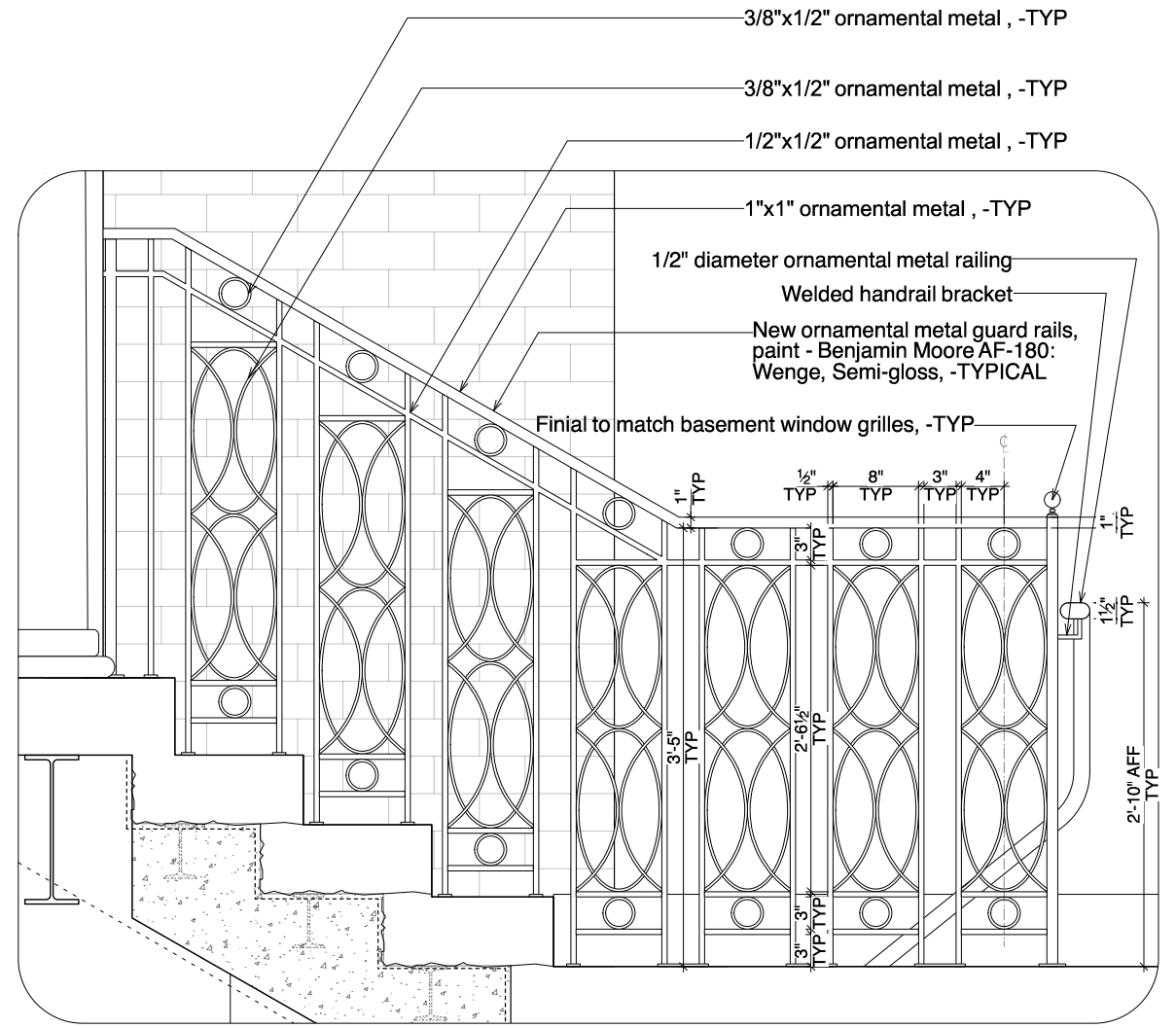




EXTERIOR GRATES UNDER BRIDGE ADD/ALTERNARE #1



TYPICAL RAIL



RAILING AT ENTRANCE



EXISTING WINDOW CONDITION (SILL FIRST FLOOR FRONT)



EXISTING WINDOW CONDITION (EXTERIOR FIRST FLOOR FRONT)





EXISTING WINDOW CONDITION (SILL SECOND FLOOR FRONT)



EXISTING WINDOW CONDITION (THIRD FLOOR FRONT RIGHT)





EXISTING FRONT FACADE



PROPOSED FRONT FACADE





EXISTING FRONT ENTRANCE



PROPOSED FRONT ENTRANCE

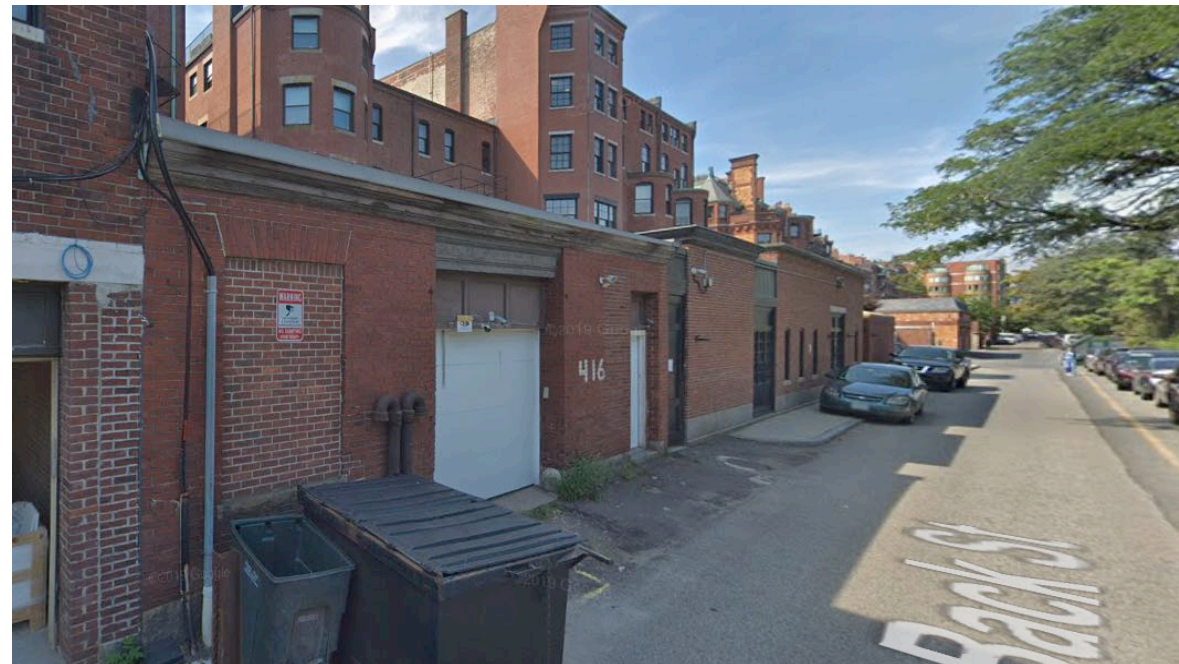




PROPOSED REAR GARAGE & DECK RAIL PERSPECTIVE



PROPOSED REAR GARAGE



EXISTING REAR GARAGE