

TAJ BOSTON

15 ARLINGTON STREET, BOSTON, MA 02116

BBAC SUPPLEMENTAL FILING

AUGUST 20, 2019









BOYLSTON ST

THOS. MOSER

WILLIAM RAYES

BURBERRY

Tiffany & Co.









BUILDING
SERVICES

CH

EXISTING ROOFTOP PHOTOGRAPHS - GENERAL SCOPE OF WORK



1. REMOVE AND REPLACE EXISTING ROOF STRUCTURE



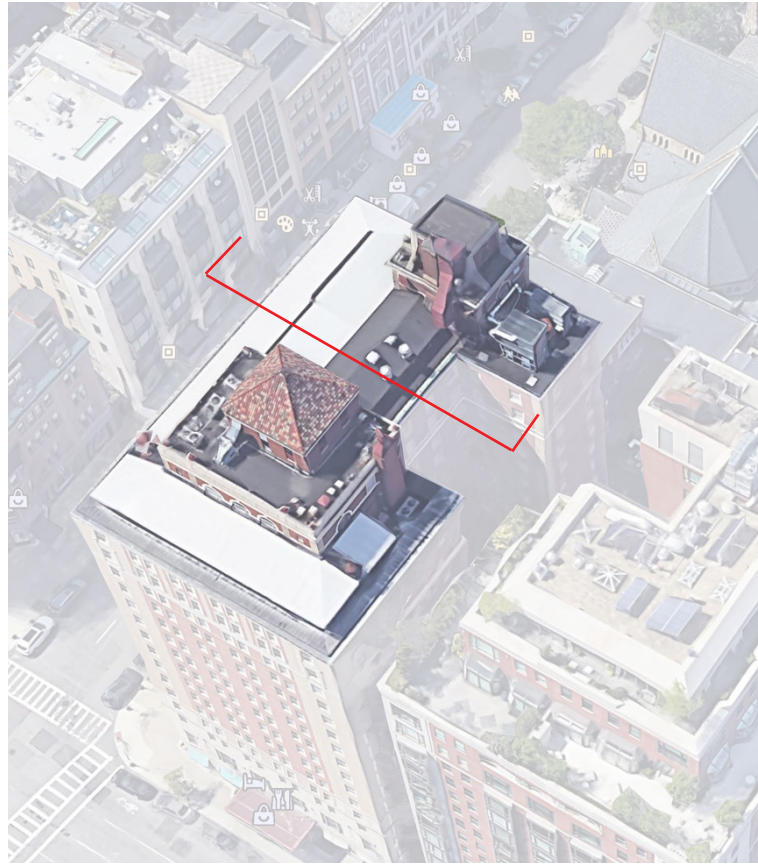
2. REPLACE WINDOWS AND RESTORE EXTERIOR



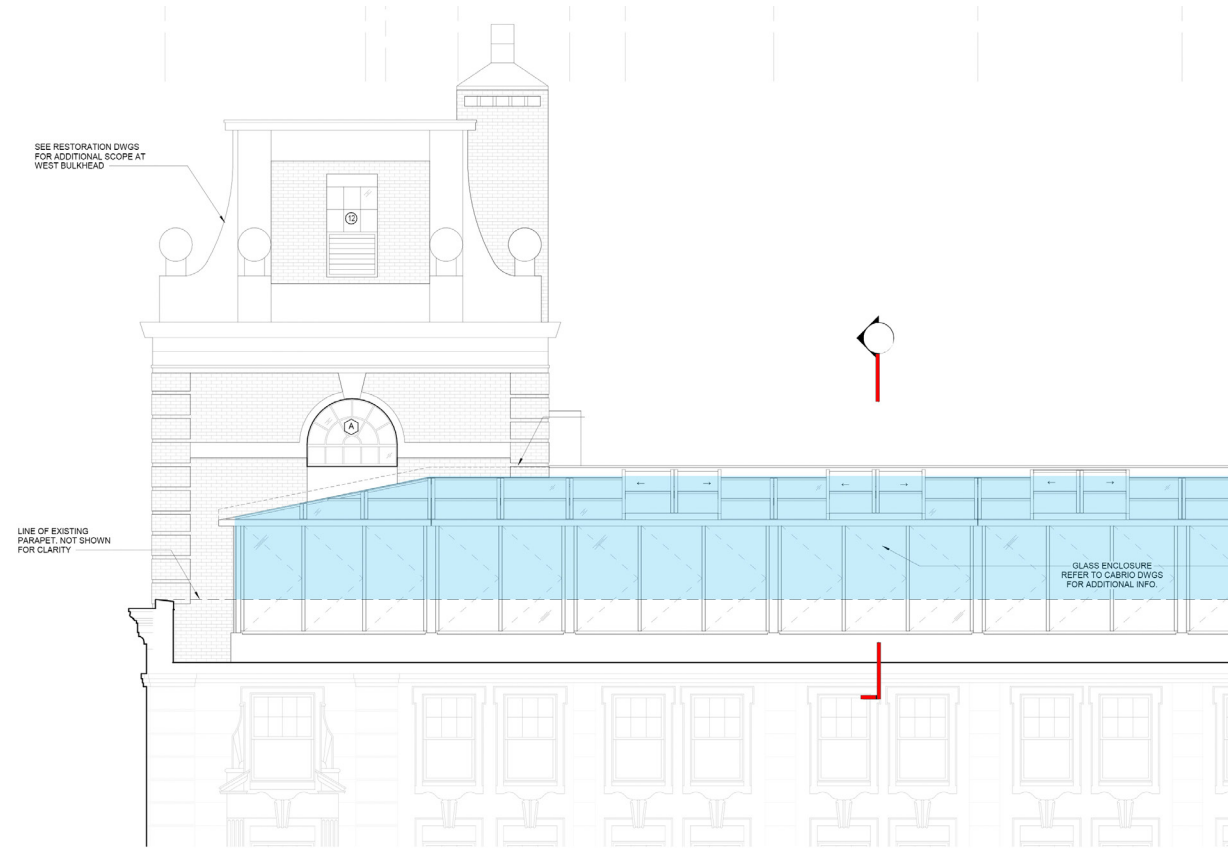
3. REMOVE AND REPLACE ROOFTOP EQUIPMENT



1. ARCHITECTURAL SECTION SHOWING NEW ROOF STRUCTURE



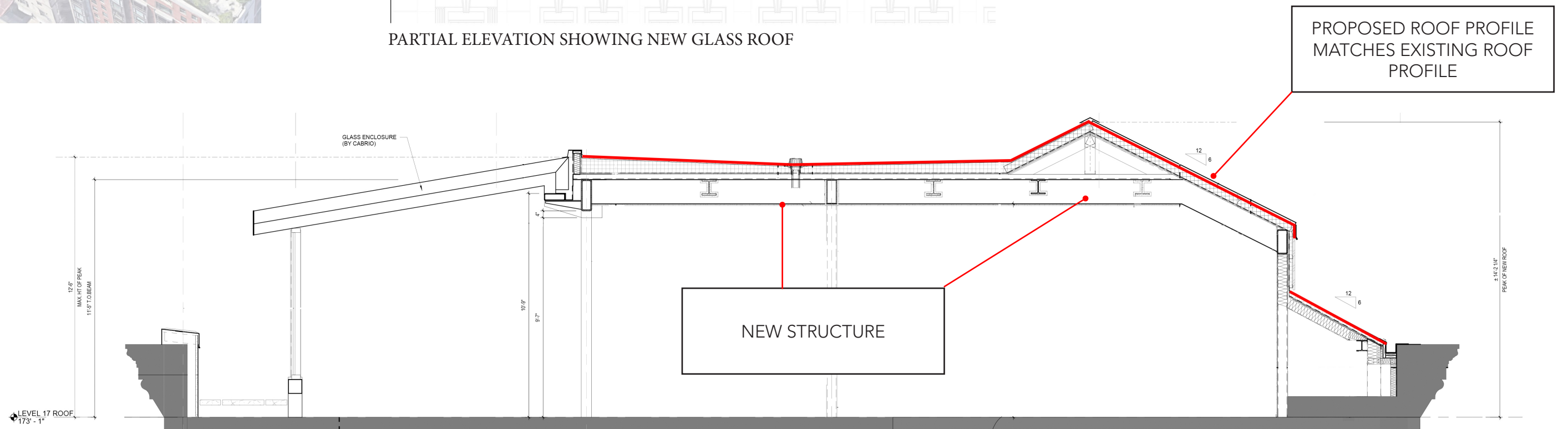
AERIAL DIAGRAM



PARTIAL ELEVATION SHOWING NEW GLASS ROOF



PROPOSED ROOF MATERIAL - STANDING SEAM METAL



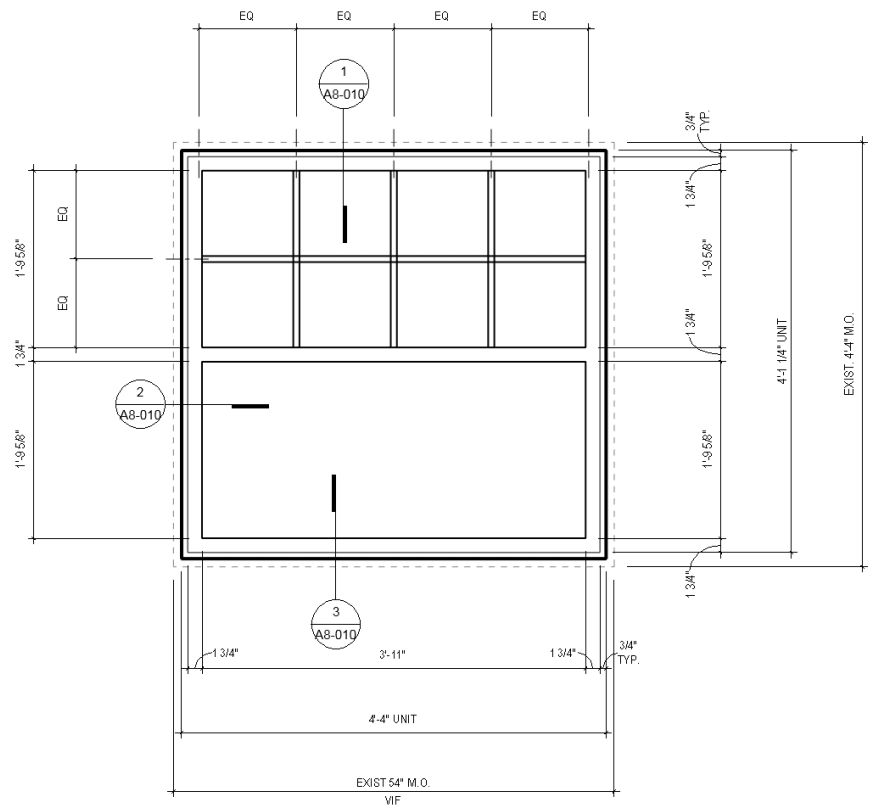
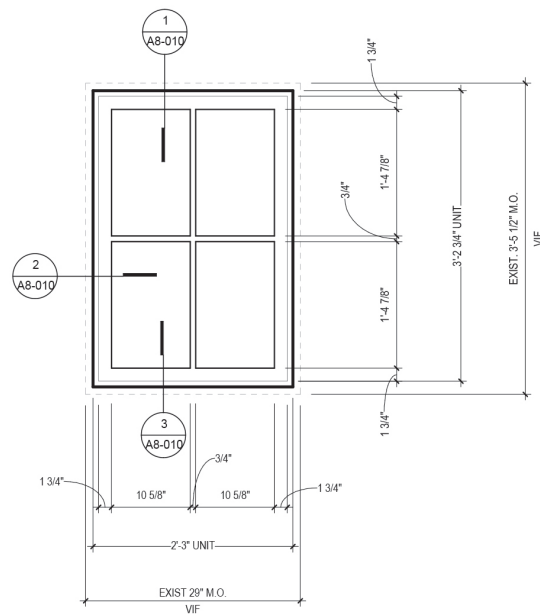
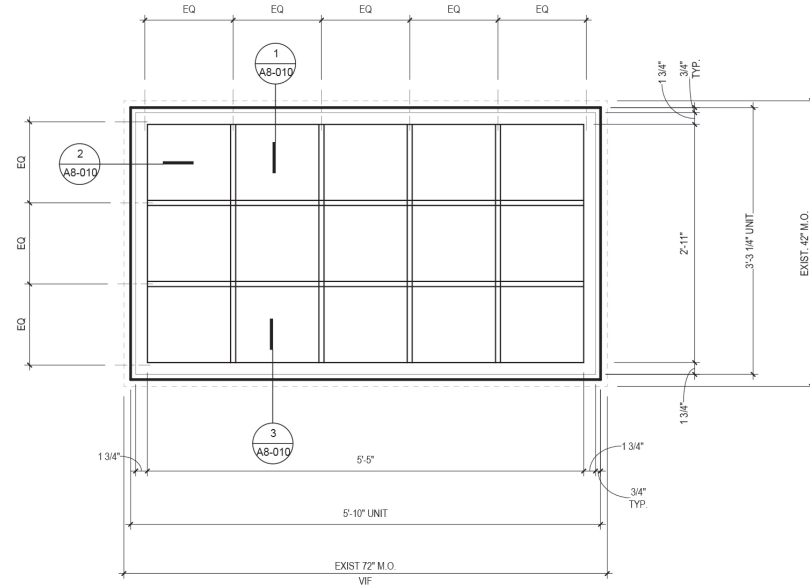
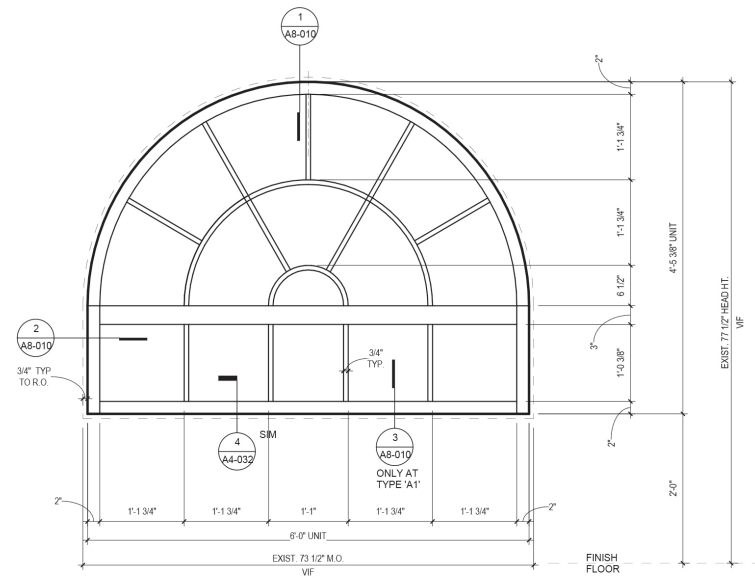
SECTION THRU NEW ROOF STRUCTURE



2. WINDOW REPLACEMENT - EXISTING PHOTOS



2. WINDOW REPLACEMENT - ELEVATIONS



SAMPLE IMAGE SHOWING SATIN BLACK WINDOW MULLIONS AND MUNTINS



2. WINDOW REPLACEMENT - VIEWS

Peerless GSH3/GDH3

Single Hung/Double Hung
Tilt Thermal Aluminum Window
AW-PG50-H/ AW-PG50-H



BENEFITS

ARCHITECT

Energy Savings

Single Hung

- U Value below .35 national standards
- CRF above 65 ensures reduced condensation

Double Hung

- Unique .358 U Value for AW double hung tilt
- CRF above 62 ensures reduced condensation

Design Flexibility

- Unique frame design allows for multiple selection of glass types to meet low U values

Paint Color Choice

- Exterior and interior colors can be different
- PPG Duranar standard or anodize paint colors

BUILDING OWNER

Building Security

- Automatic sill locks engage when closing
- Unique tilt latch design resist tampering

Low Maintenance

- Tested to AAMA 'Life Cycle' specifications
- Class 5 balances for many years of operation

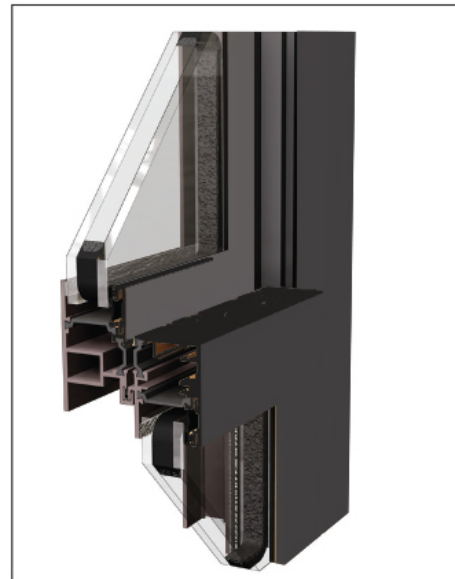
INSTALLER

Frame Choices

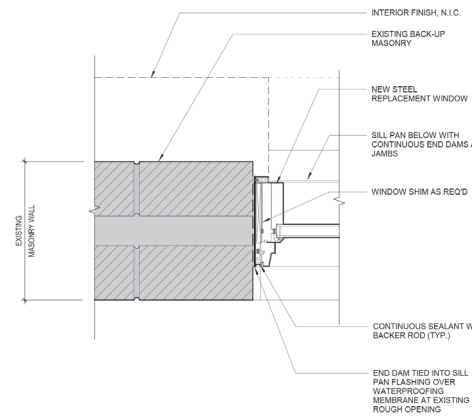
- Continuous head/sill/jamb eliminate mullions
- Flange designs can eliminate field trimming

Flush-back Master Frames

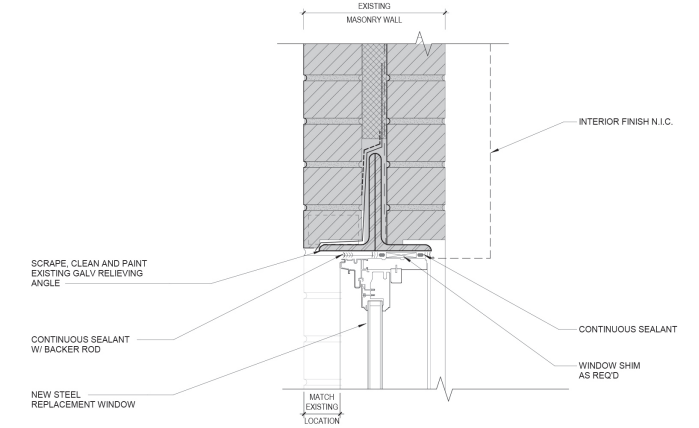
- Result in ideal parallel-sided caulk joints
- Reduce the need for large caulk backer rods



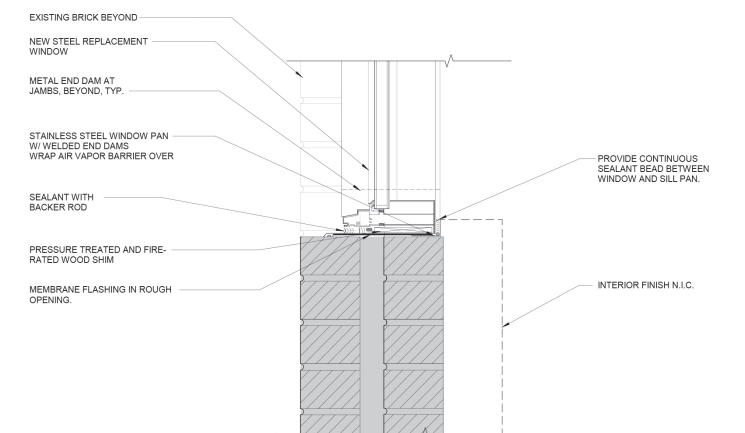
Single Hung
(Shown)
Woodgrain film
interior



JAMB DETAIL



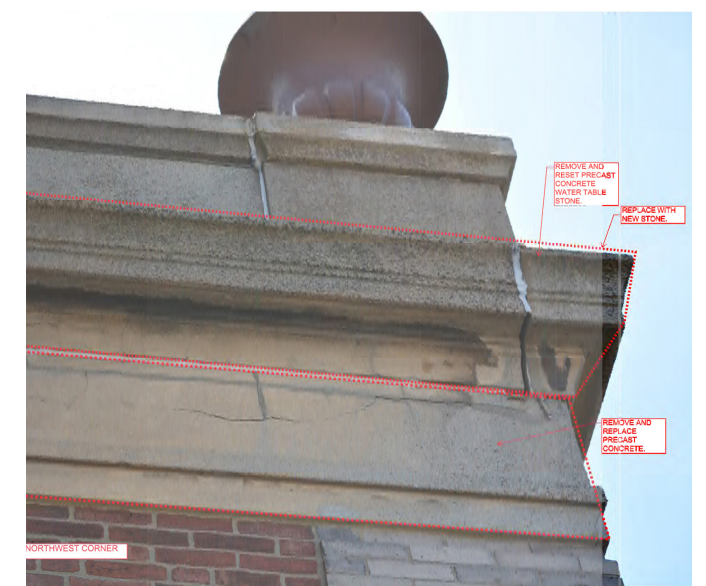
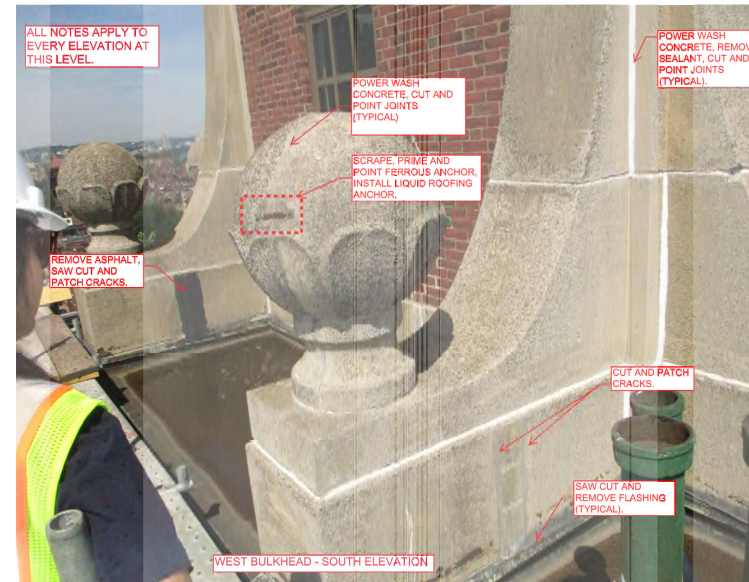
HEAD DETAIL



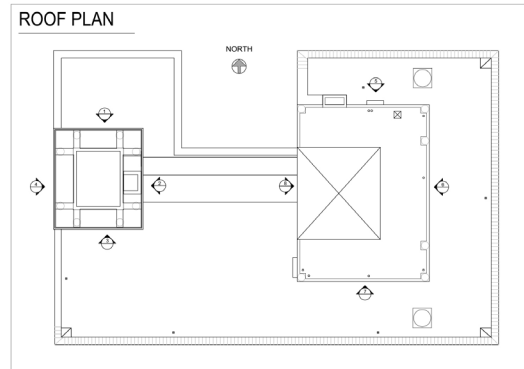
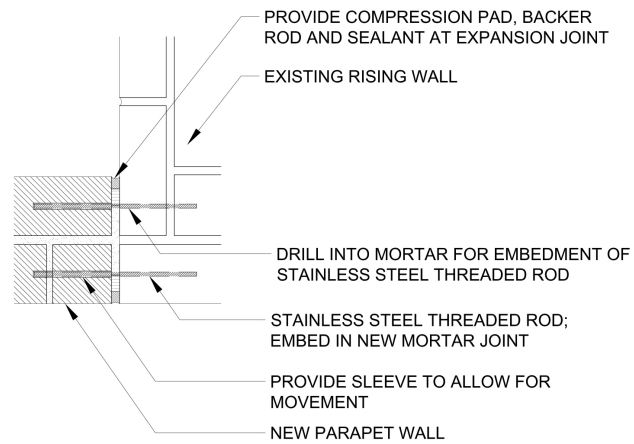
SILL DETAIL



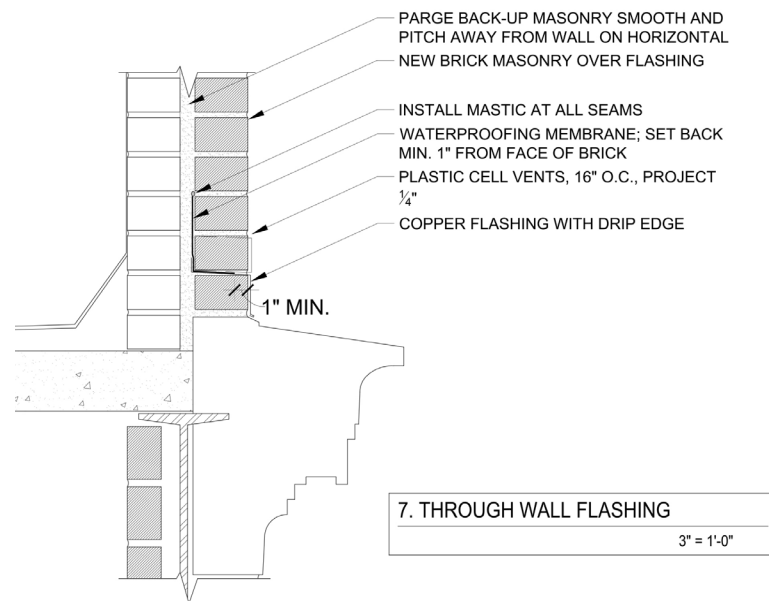
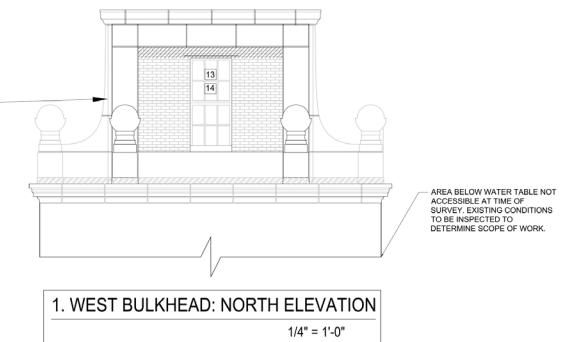
2. RESTORATION - PHOTOS OF EXISTING



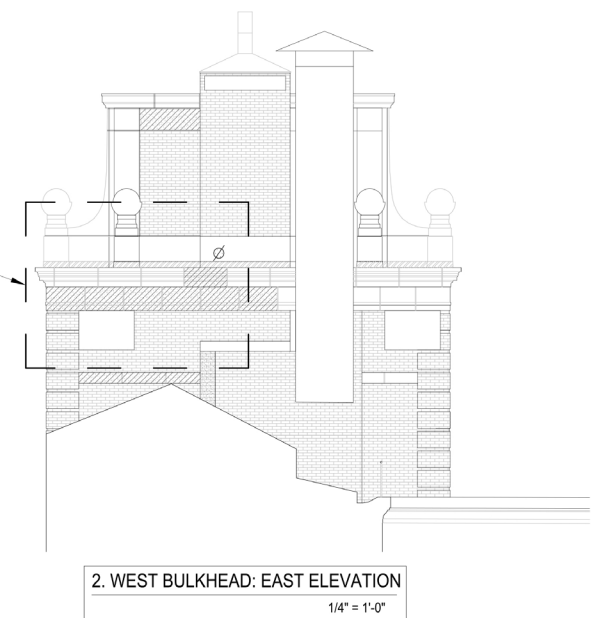
2. RESTORATION



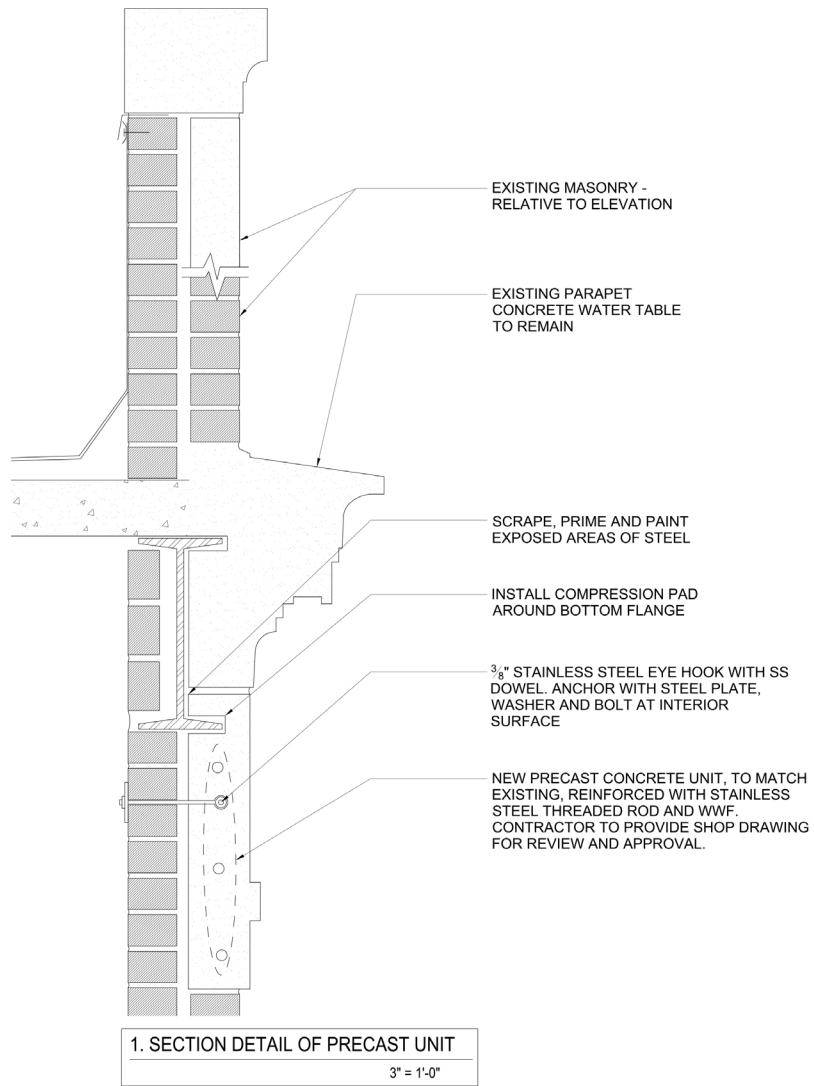
- LEGEND**
- LINTEL REPLACEMENT
 - FACE BRICK REPLACEMENT
 - CUT AND POINT MORTAR JOINTS
 - PRE CAST CONCRETE REPLACEMENT
 - REMOVE EXISTING FLASHING/SEALANT
 - STONE PATCH
 - STONE CRACK REPAIR
 - CRACK IN INTERIOR / SIDE RETURN
 - MISSING TILE
 - ANCHOR REMOVAL
 - NOTE TO NUMBER



- GENERAL NOTES (Refer to Details Where Applicable)**
1. POWER WASH ALL PRECAST CONCRETE, REMOVE SEALANT AND COAT WITH CONPRO LASTIC COATING AS MANUFACTURED BY CONPROCO. CUT AND POINT ALL CAST CONCRETE JOINTS, UNLESS UNIT IS BEING REPLACED.
 2. CUT AND POINT ALL SKYWARD FACING JOINTS AT WATER TABLES, CORNICES AND COPINGS. REPLACE WITH NEW BACKER ROD AND SEALANT.
 3. REMOVE EXISTING ASPHALT FROM PRECAST CONCRETE SURFACES - LIMITED/ISOLATED LOCATIONS AT BULKHEAD UPPER ROOF PARAPETS.
 4. DECORATIVE GLOBES: PAINT EXPOSED FERROUS ANCHORS AT ALL PRECAST CONCRETE DECORATIVE GLOBES. COAT ANCHORS WITH LIQUID ROOFING PATCHES, CUT AND POINT ALL JOINTS. COAT ALL PRECAST CONCRETE SURFACES WITH CONPRO LASTIC COATING AS MANUFACTURED BY CONPROCO.
 5. EAST BULKHEAD: REPAIR SELECTIVE COPPER URN BASES - SEE DRAWINGS. REMOVE PAINT AND COAT WITH TNEMEC PAINT ON ALL COPPER URNS.
 6. SCRAPE, PRIME AND PAINT ALL EXPOSED EXISTING STRUCTURAL STEEL DURING COURSE OF CONSTRUCTION.
 7. PROVIDE SHOP DRAWINGS FOR ALL REPLACEMENT STONE.
 8. PROVIDE SHOP DRAWINGS FOR ALL REPLACEMENT SHEET METAL.
 9. PROVIDE PRODUCT DATA AND SAMPLE (FOR COLOR MATCHING) SUBMITTALS FOR REVIEW AND APPROVAL BY ARCHITECT AND CONSULTANT FOR ALL MATERIALS INCLUDING BUT NOT LIMITED TO MORTAR, SEALANT, PAINT, PRECAST CONCRETE.
 10. WHERE NOTED FOR REMOVE AND RESET, CAREFULLY REMOVE MATERIAL, GENTLY CLEAN IF NOTED, AND STORE IN A SAFE AND DRY MANNER UNTIL TIME TO RESET.
 11. AREAS AS NOTED MUST BE MADE ACCESSIBLE TO ARCHITECT FOR CLOSE-UP INSPECTION AS IT WAS NOT AVAILABLE FOR SURVEY.
 12. SEE ARCHITECT OF RECORD'S DRAWINGS FOR NEW ROOFING SCOPE AT BULKHEADS AND MAIN PENTHOUSE ROOF.
 13. EXISTING STEEL WINDOWS TO REMAIN: SCRAPE, PRIME, AND PAINT STEEL WINDOW FRAME, AND REPLACE GLAZING PUTTY ON WINDOWS AS NOTED.
 14. REMOVE AND REPLACE PERIMETER SEALANT ON EXISTING STEEL WINDOWS TO REMAIN.

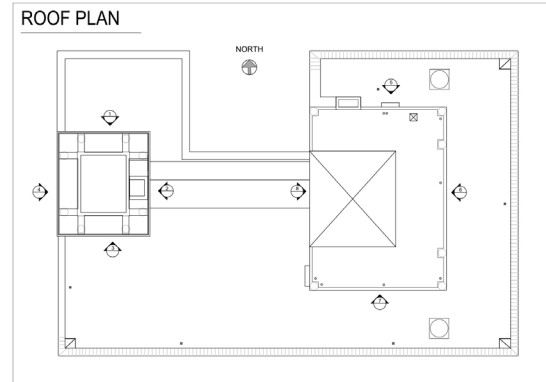


2. RESTORATION



1. SECTION DETAIL OF PRECAST UNIT

3" = 1'-0"

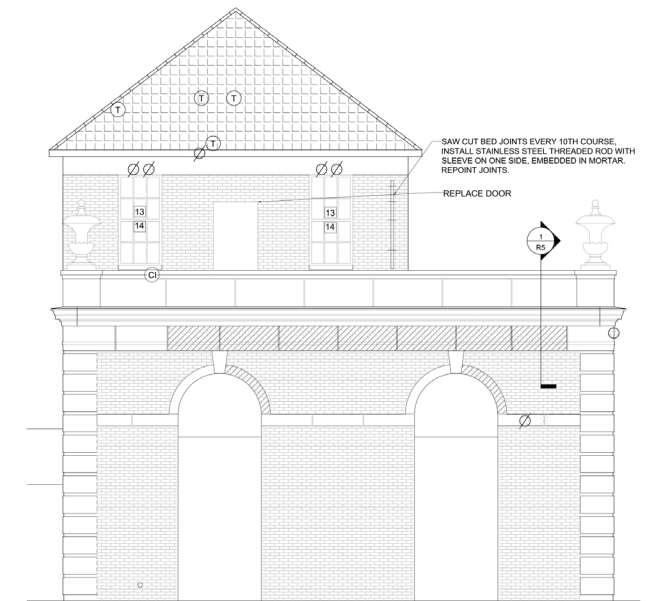
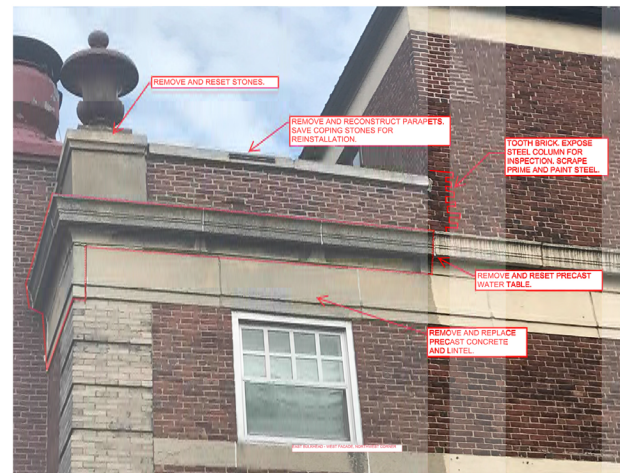


LEGEND

- LINTEL REPLACEMENT
- FACE BRICK REPLACEMENT
- CUT AND POINT MORTAR JOINTS
- PRE CAST CONCRETE REPLACEMENT
- REMOVE EXISTING FLASHING/SEALANT
- STONE PATCH
- STONE CRACK REPAIR
- CRACK IN INTERIOR / SIDE RETURN
- MISSING TILE
- ANCHOR REMOVAL
- NOTE TO NUMBER

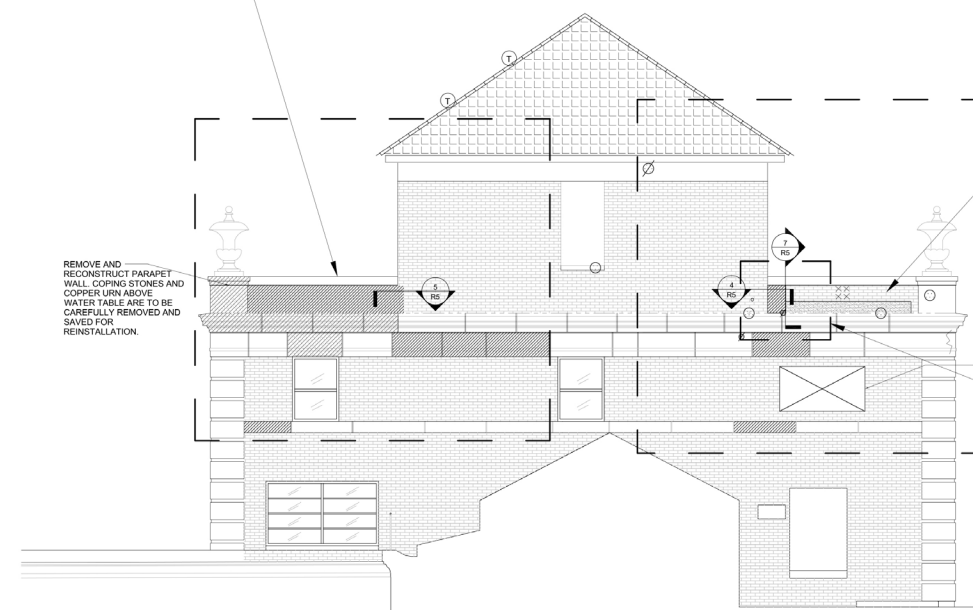
GENERAL NOTES (Refer to Details Where Applicable)

1. POWER WASH ALL PRECAST CONCRETE, REMOVE SEALANT AND COAT WITH CONPRO LASTIC COATING AS MANUFACTURED BY CONPROCO. CUT AND POINT ALL CAST CONCRETE JOINTS, UNLESS UNIT IS BEING REPLACED.
2. CUT AND POINT ALL SKYWARD FACING JOINTS AT WATER TABLES, CORNICES AND COPINGS. REPLACE WITH NEW BACKER ROD AND SEALANT.
3. REMOVE EXISTING ASPHALT FROM PRECAST CONCRETE SURFACES - LIMITED/ISOLATED LOCATIONS AT BULKHEAD UPPER ROOF PARAPETS.
4. DECORATIVE GLOBES: PAINT EXPOSED FERROUS ANCHORS AT ALL PRECAST CONCRETE DECORATIVE GLOBES. COAT ANCHORS WITH LIQUID ROOFING PATCHES, CUT AND POINT ALL JOINTS. COAT ALL PRECAST CONCRETE SURFACES WITH CONPRO LASTIC COATING AS MANUFACTURED BY CONPROCO.
5. EAST BULKHEAD: REPAIR SELECTIVE COPPER URN BASES - SEE DRAWINGS. REMOVE PAINT AND COAT WITH TMEC PAINT ON ALL COPPER URNS.
6. SCRAPE, PRIME AND PAINT ALL EXPOSED EXISTING STRUCTURAL STEEL DURING COURSE OF CONSTRUCTION.
7. PROVIDE SHOP DRAWINGS FOR ALL REPLACEMENT STONE.
8. PROVIDE SHOP DRAWINGS FOR ALL REPLACEMENT SHEET METAL.
9. PROVIDE PRODUCT DATA AND SAMPLE (FOR COLOR MATCHING) SUBMITTALS FOR REVIEW AND APPROVAL BY ARCHITECT AND CONSULTANT FOR ALL MATERIALS INCLUDING BUT NOT LIMITED TO MORTAR, SEALANT, PAINT, PRECAST CONCRETE.
10. WHERE NOTED FOR REMOVE AND RESET, CAREFULLY REMOVE MATERIAL, GENTLY CLEAN IF NOTED, AND STORE IN A SAFE AND DRY MANNER UNTIL TIME TO RESET.
11. AREAS AS NOTED MUST BE MADE ACCESSIBLE TO ARCHITECT FOR CLOSE-UP INSPECTION AS IT WAS NOT AVAILABLE FOR SURVEY.
12. SEE ARCHITECT OF RECORD'S DRAWINGS FOR NEW ROOFING SCOPE AT BULKHEADS AND MAIN PENTHOUSE ROOF.
13. EXISTING STEEL WINDOWS TO REMAIN: SCRAPE, PRIME, AND PAINT STEEL WINDOW FRAME, AND REPLACE GLAZING PUTTY ON WINDOWS AS NOTED.
14. REMOVE AND REPLACE PERIMETER SEALANT ON EXISTING STEEL WINDOWS TO REMAIN.



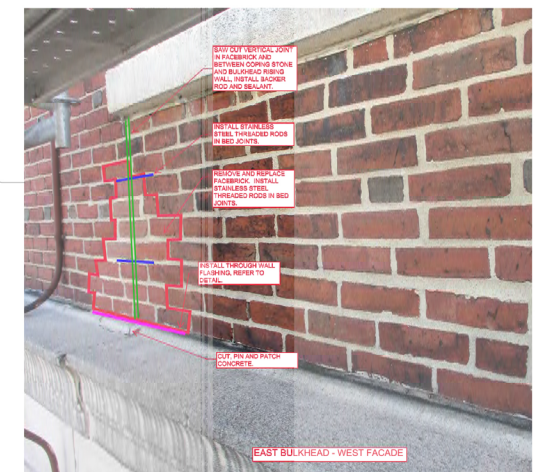
7. EAST BULKHEAD: SOUTH ELEVATION

1/4" = 1'-0"



8. EAST BULKHEAD: WEST ELEVATION

1/4" = 1'-0"



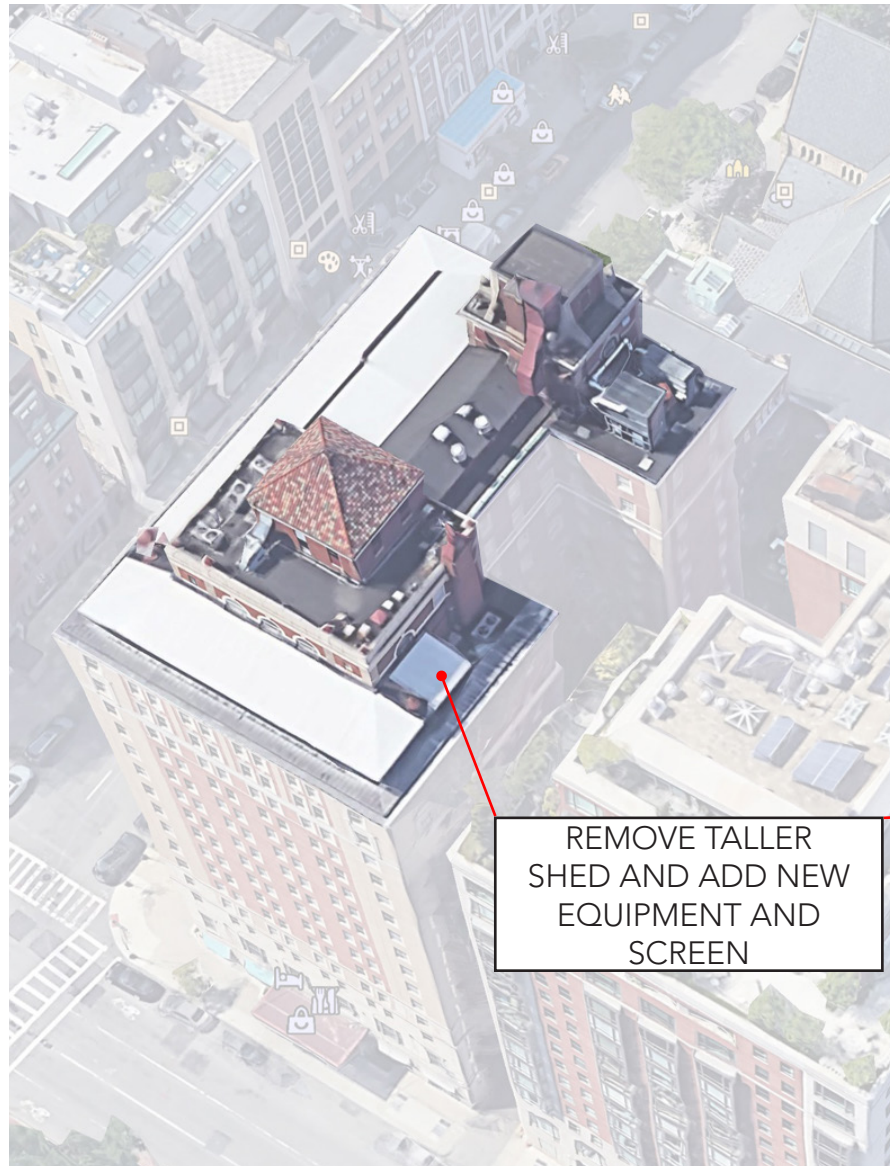
EAST BULKHEAD - WEST FACADE



3. MECHANICAL EQUIPMENT - EXISTING CONDITIONS



3. MECHANICAL EQUIPMENT



AERIAL VIEW - EXISTING



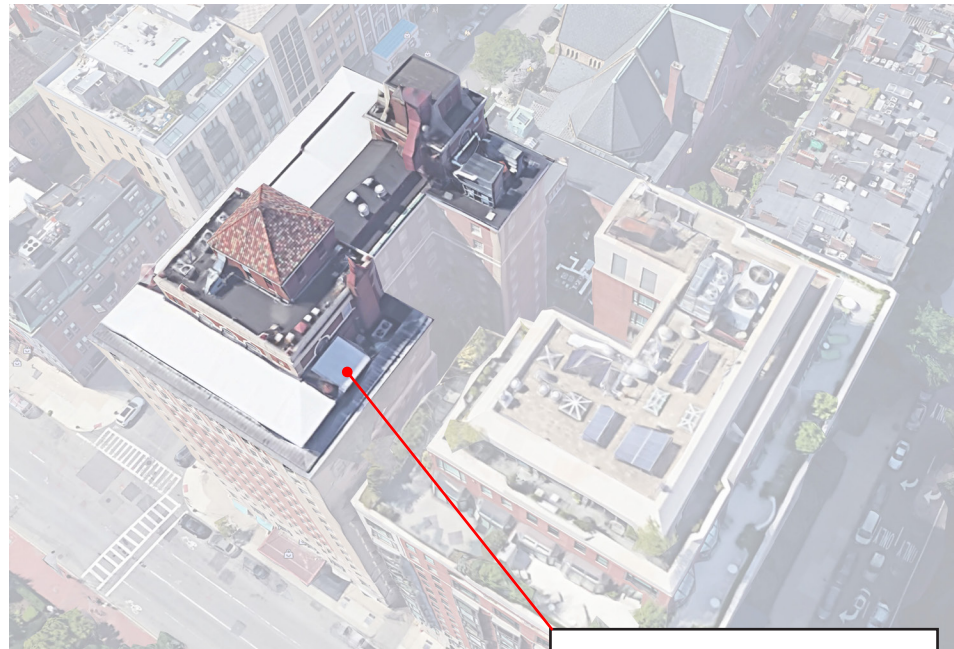
FLR 17 - EXISTING SHED



FLR 17 - PROPOSED EQUIPMENT

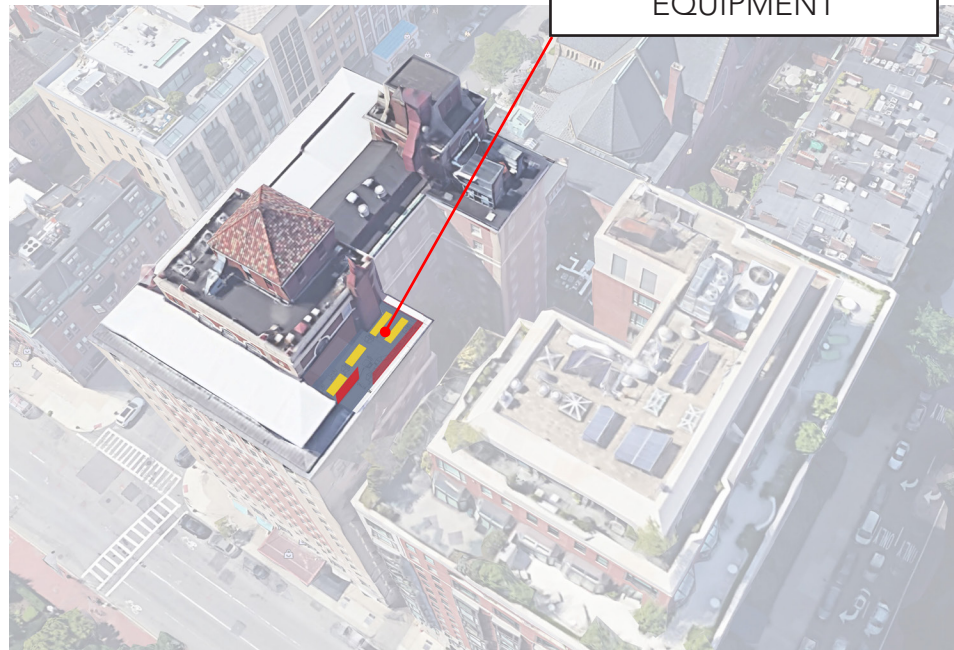


3. ROOF PLAN - LEVEL 17 EQUIPMENT

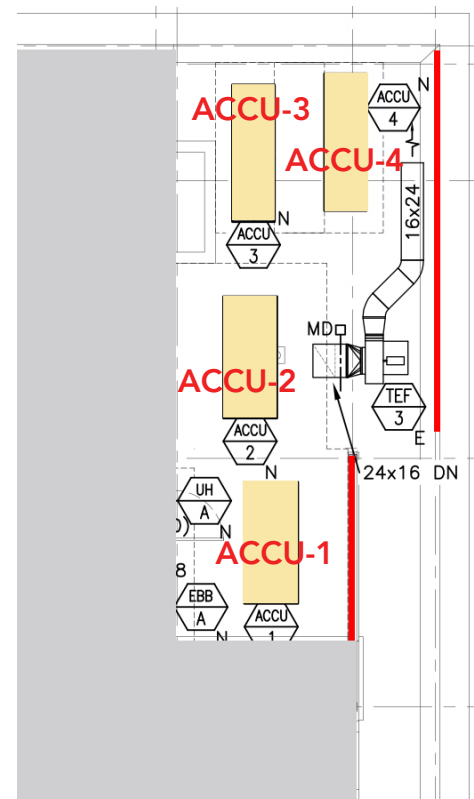


AERIAL VIEW - PROPOSED

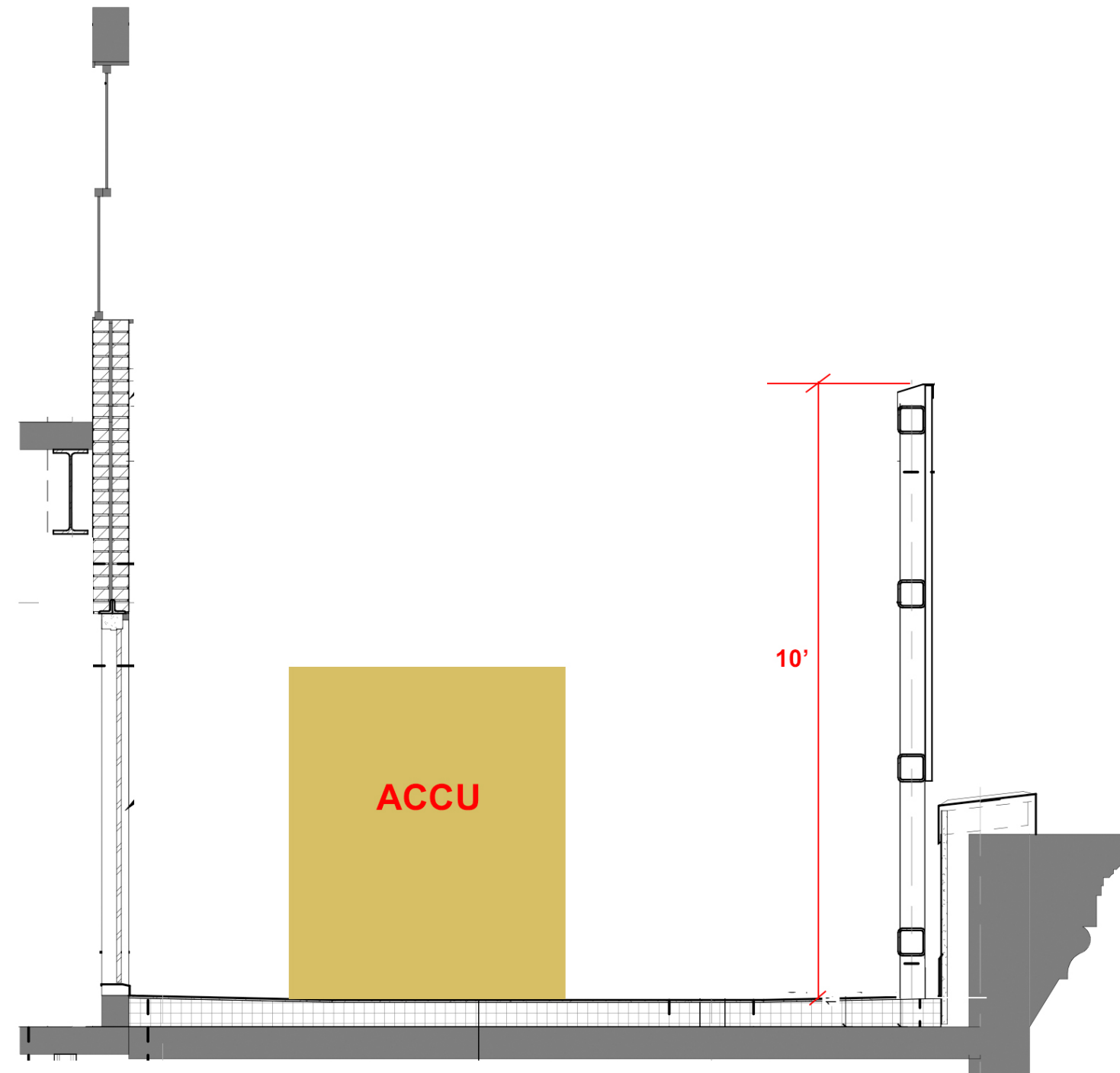
REMOVE TALLER SHED
AND ADD NEW MECH
EQUIPMENT



AERIAL VIEW - PROPOSED



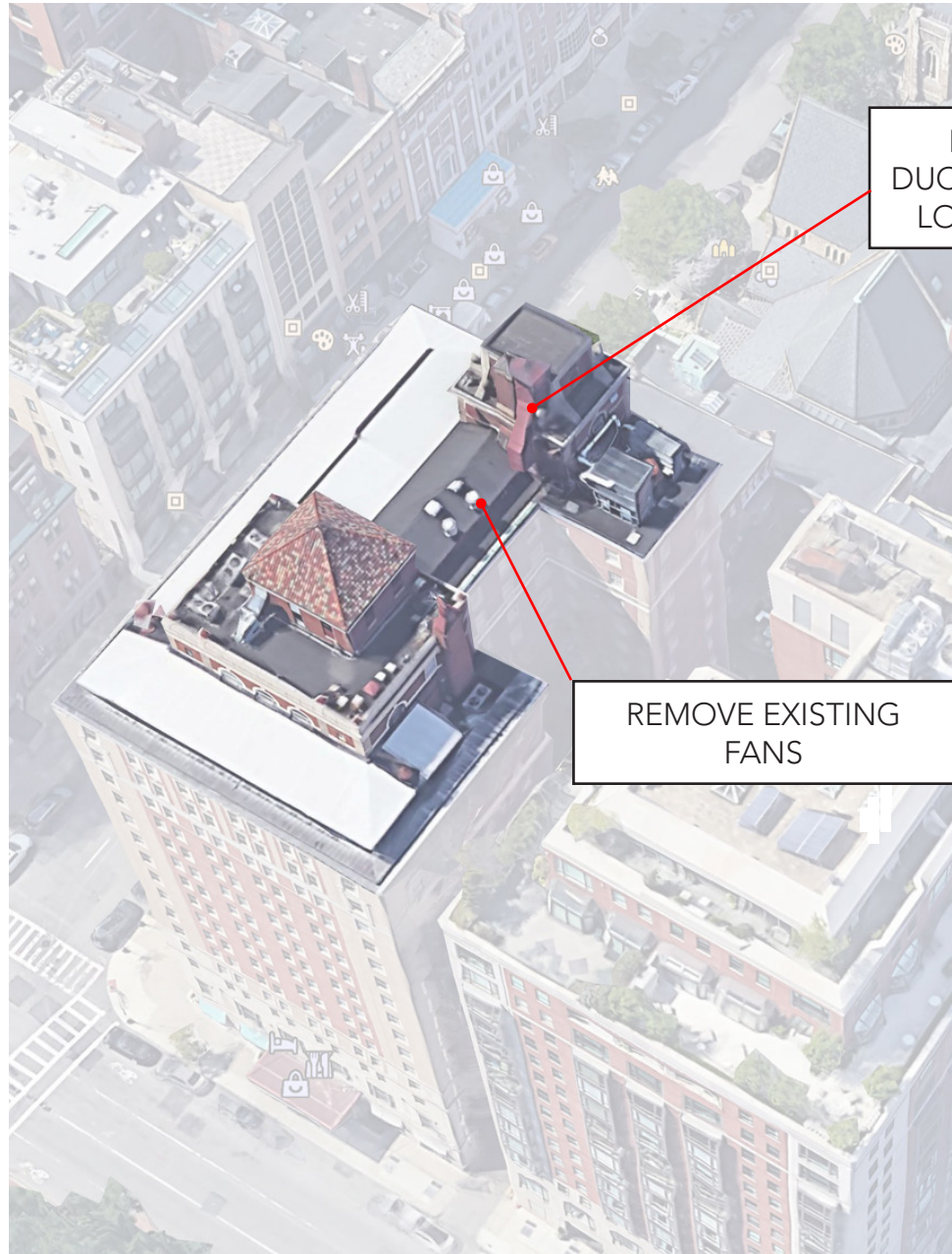
PARTIAL PLAN



SECTION THRU MECHANICAL SCREEN



3. ROOF PLAN - LEVEL 18



REMOVE EXISTING FANS

REMOVE EXISTING DUCT AND REPLACE WITH LOUVER AT BASE ONLY

AERIAL VIEW - EXISTING

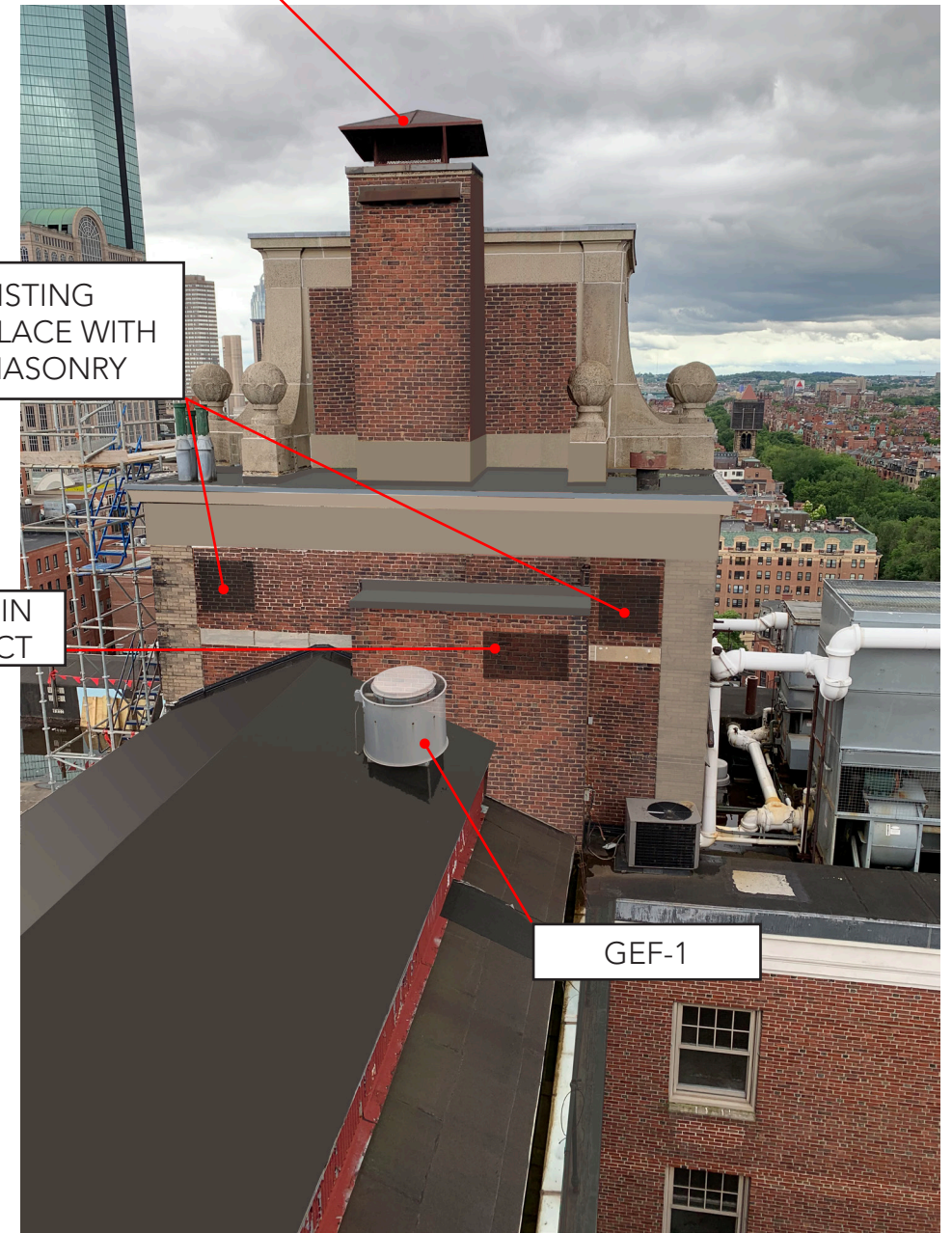


REMOVE EXISTING VENTS AND REPLACE WITH LOUVERS IN MASONRY

NEW LOUVER IN PLACE OF DUCT

REMOVE EXISTING CHIMNEY CAP AND REPLACE FOR ADDITIONAL AIR FLOW REQUIREMENTS

FLR 18 - EXISTING EQUIPMENT TO REMOVE

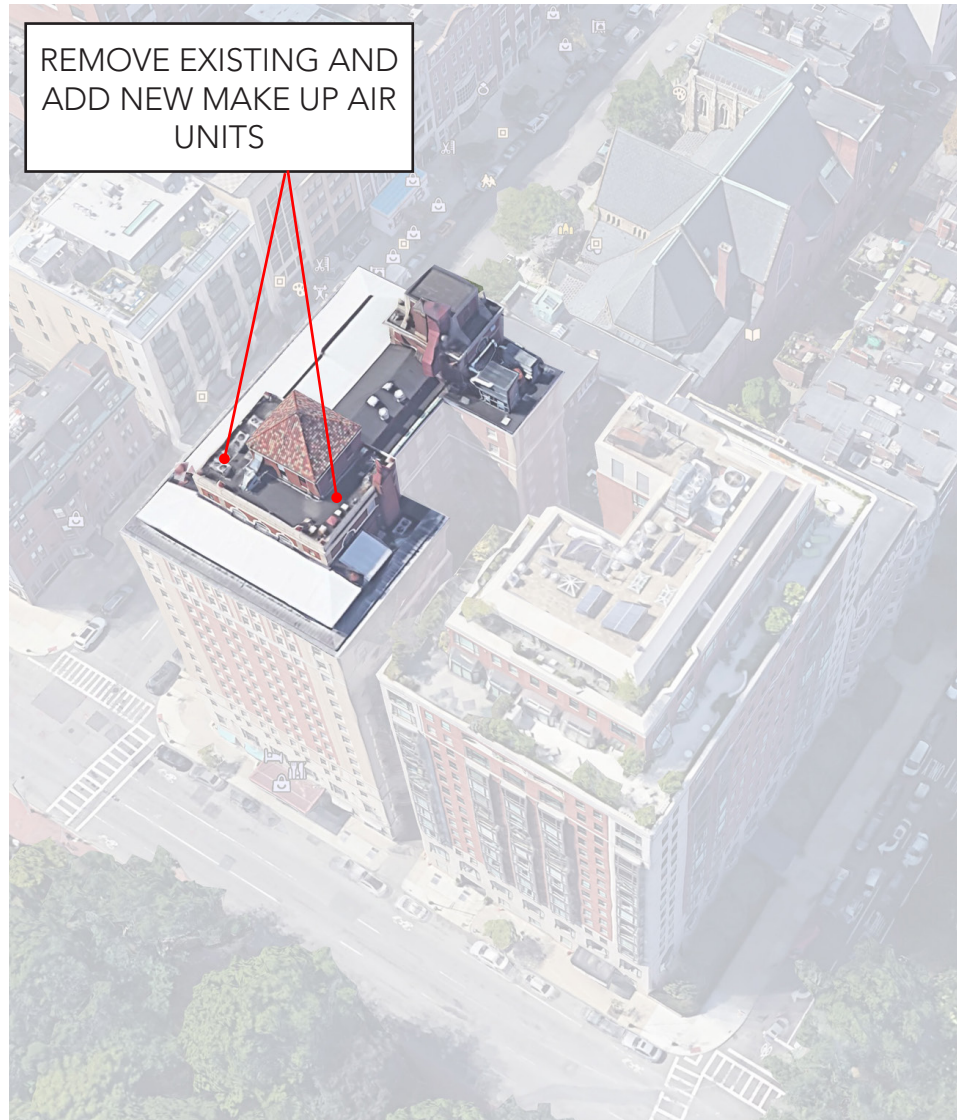


GEF-1

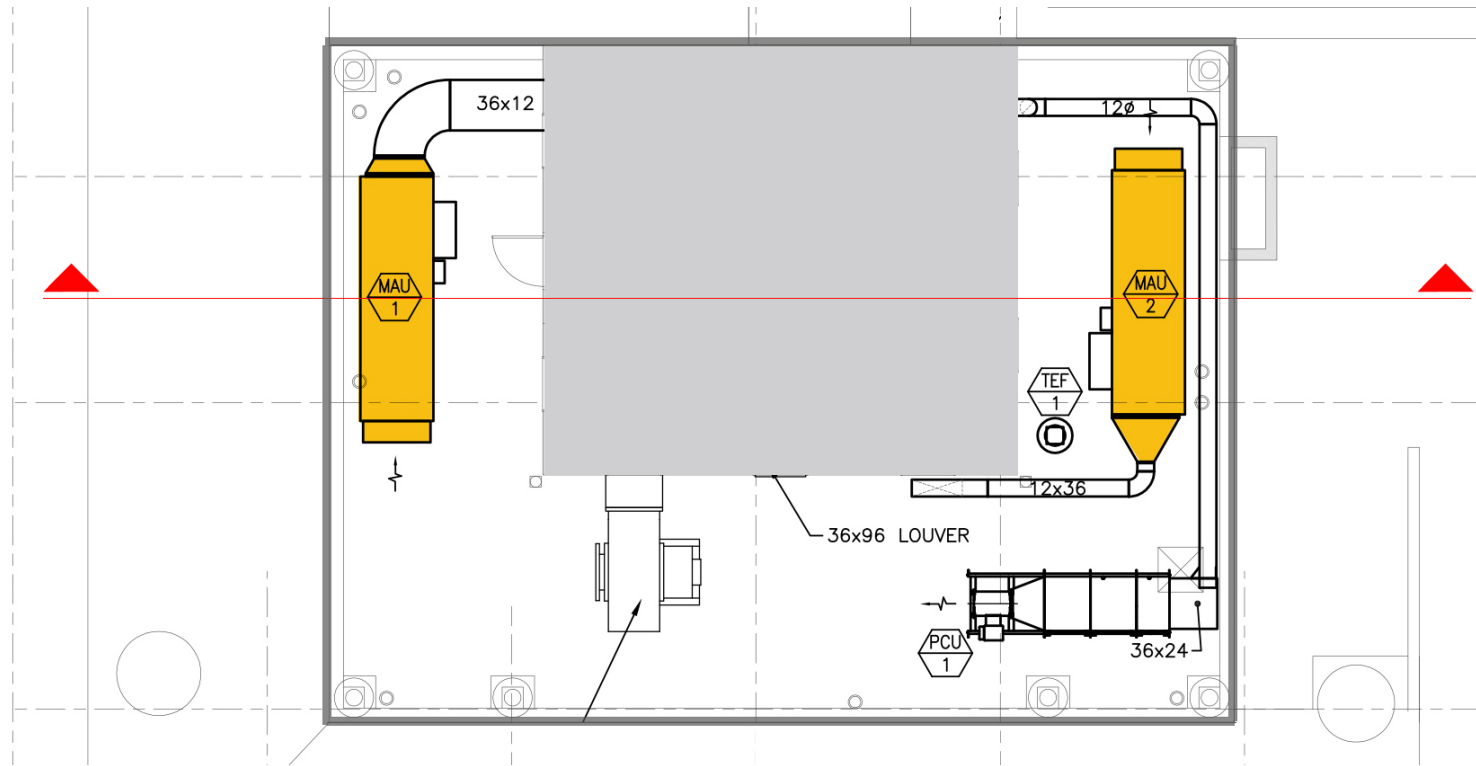
FLR 18 - PROPOSED ROOF PLAN VIEW



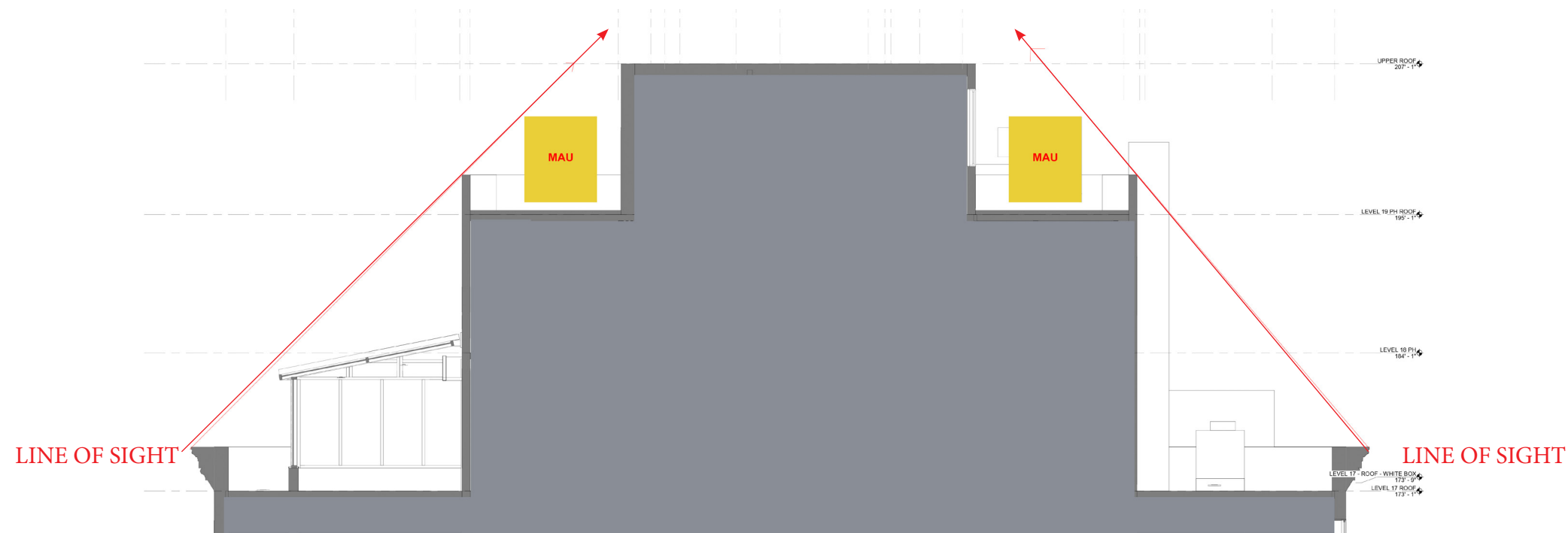
3. ROOF PLAN - LEVEL 19



AERIAL VIEW - EXISTING



PROPOSED PLAN DIAGRAM



PROPOSED SECTION DIAGRAM



3. MECHANICAL EQUIPMENT

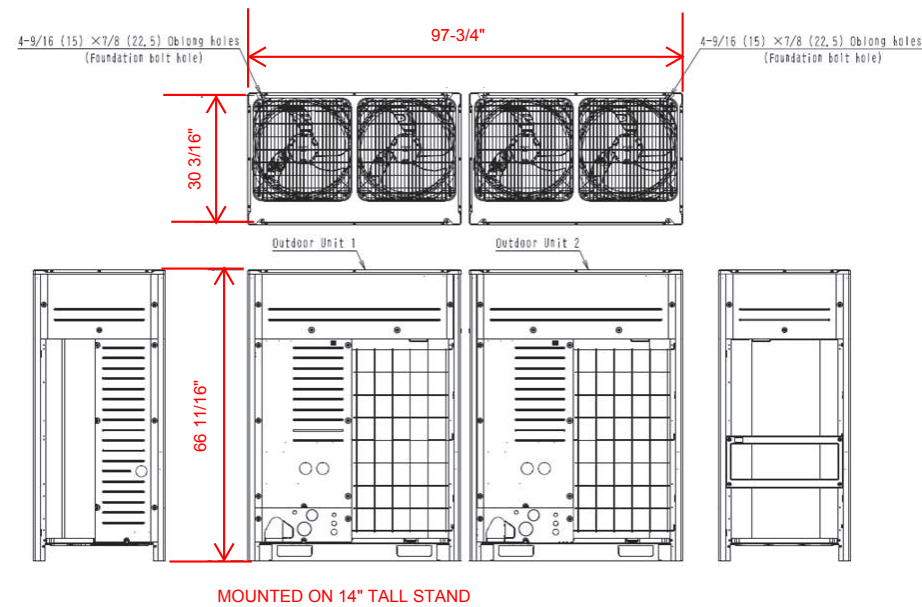


ACCU-3 & ACCU-4

Submittal Data Sheet
20-Ton VRV-IV Heat Recovery Unit - 460V
REYQ240TYDN

SYSTEM DETAILS			
Refrigerant Type:	R-410A	Cooling Operation Range (*F DB):	23 - 122
Holding Refrigerant Charge (lbs):	25.8+25.8	Heating Operation Range (*F WB):	-13 - 60
Additional Charge (lb/ft):		Max. Pipe Length (Vertical) (ft):	295
Pre-charge Piping (Length) (ft):		Cooling Range w/Baffle (*F DB):	-
Max. Pipe Length (Total) (ft):	540	Heating Range w/Baffle (*F WB):	-
Max Height Separation (Ind to Ind ft):			

DIMENSIONAL DRAWING



Daikin City Generated Submittal Data

Daikin North America LLC, 5151 San Felipe, Suite 500, Houston, TX, 77056

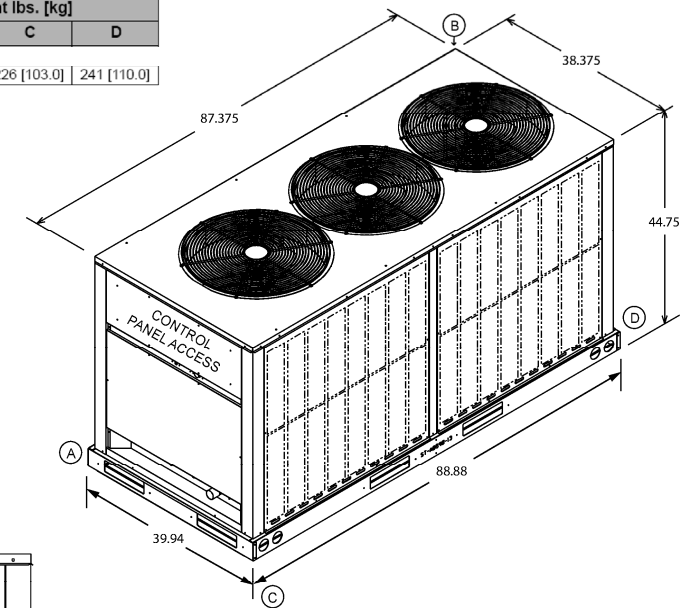
www.daikinac.com www.daikincomfort.com

(Daikin's products are subject to continuous improvements. Daikin reserves the right to modify product design, specifications and information in this data sheet without notice and without incurring any obligations)

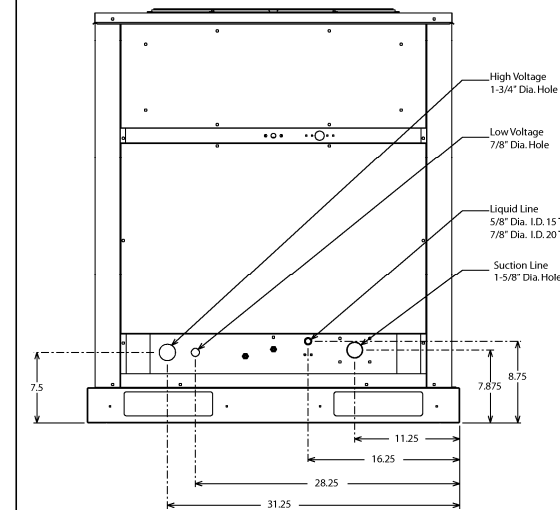
Page 3 of 3

RCS15F_Drawing for ACCU-1 (20 Ton)

RCS model	Total weight lbs. [kg]	Corner weight lbs. [kg]			
		A	B	C	D
20F	952 [432.0]	234 [106.0]	251 [114.0]	226 [103.0]	241 [110.0]



ACCU-1,2



MOUNTED ON 14" TALL STAND

Product Drawing	Unit Tag: ACCU-1 (20 Ton)	
Product:	Project Name: 21900088 - Taj Hotel -	
Model: RCS20F240D	Sales Office: HTS New England (Boston)	13600 Industrial Park Blvd. Minneapolis, MN 55441 www.DaikinApplied.com Software Version: 06.80
Sales Engineer:	Aug. 01, 2019 Ver/Rev: Sheet 1 of 1	Scale: NTS Tolerance: +/-0.25" Dwg Units: in [mm]
No change to this drawing may be made unless approved in writing by Daikin Applied. Purchaser must determine that the equipment is fit and sufficient for the job specifications.		

Job Number: 1B7H1M

Page

Prepared Date:

8/1/2019

Job Name: 21900088 - Taj Hotel - Boston

17 of 18

www.DaikinApplied.com



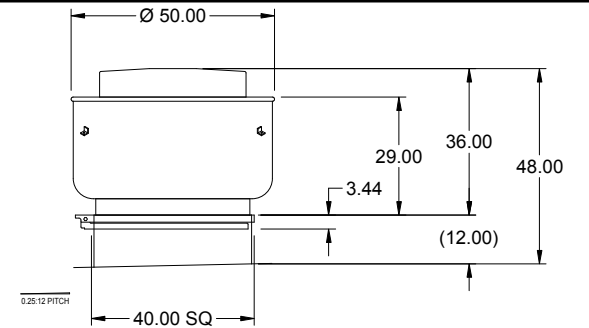
All material contained within this page is confidential.
Any reproduction or redistribution of this material is prohibited.

3. MECHANICAL EQUIPMENT



Printed Date: 08/09/2019
 Job: Taj - Amenties Rooftop
 Mark: GEF-A
 Model: CUBE-300HP-30

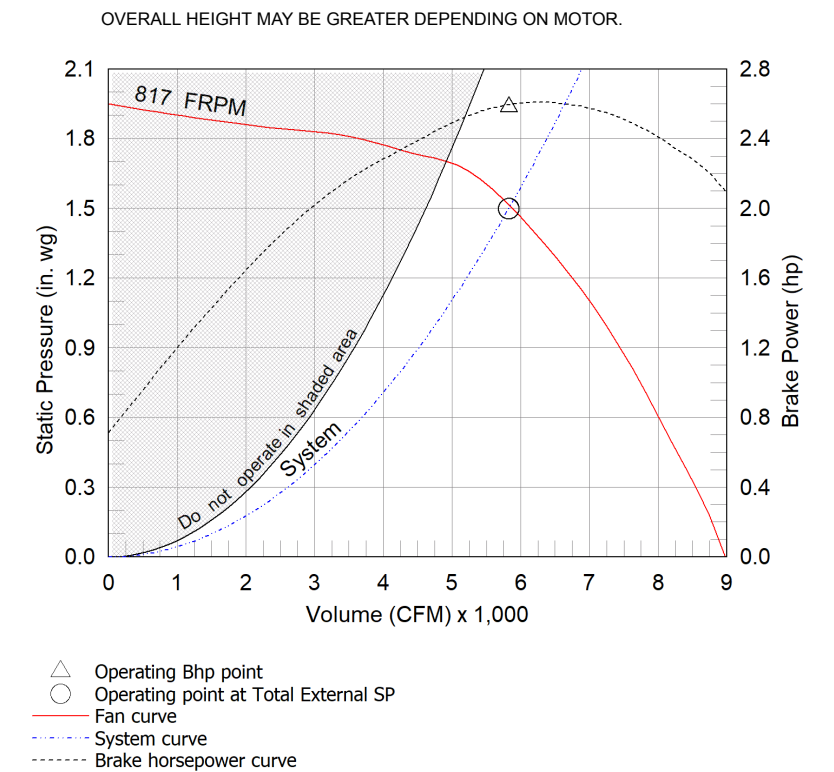
Model: CUBE-300HP-30
 Belt Drive Upblast Centrifugal Roof Exhaust Fan



Dimensional	
Quantity	1
Weight w/o Acc's (lb)	225
Weight w/ Acc's (lb)	271
Max T Motor Frame Size	215
Roof Opening (in.)	32.5 x 32.5

Performance	
Requested Volume (CFM)	5,826
Actual Volume (CFM)	5,826
Total External SP (in. wg)	1.5
Fan RPM	817
Operating Power (hp)	2.58
Elevation (ft)	30
Airstream Temp.(F)	70
Air Density (lb/ft3)	0.075
Drive Loss (%)	4.5
Tip Speed (ft/min)	6,523
Static Eff. (%)	56

Motor	
Motor Mounted	Yes
Size (hp)	3
Voltage/Cycle/Phase	460/60/3
Enclosure	ODP
Motor RPM	1725
Windings	1
NEC FLA* (Amps)	4.8



Sound Power by Octave Band

Sound Data	62.5	125	250	500	1000	2000	4000	8000	LwA	dBA	Sones
Inlet	80	82	84	78	73	71	69	64	81	69	18.0

Notes:

All dimensions shown are in units of in.
 *NEC FLA - based on tables 430.248 or 430.250 of National Electrical Code 2014. Actual motor FLA may vary, for sizing thermal overload, consult factory.
 LwA - A weighted sound power level, based on ANSI S1.4
 dBA - A weighted sound pressure level, based on 11.5 dB attenuation per Octave band at 5 ft - dBA levels are not licensed by AMCA International
 Sones - calculated using AMCA 301 at 5 ft



CAPS 4.29.1685

Generated by: amitzan@c3boston.com
 Z:\CAPs Selections\Taj - Amenties Rooftop.gfcj



3. MECHANICAL EQUIPMENT

Drawing for DOAS-1 (DX Coil, Gas Heat)

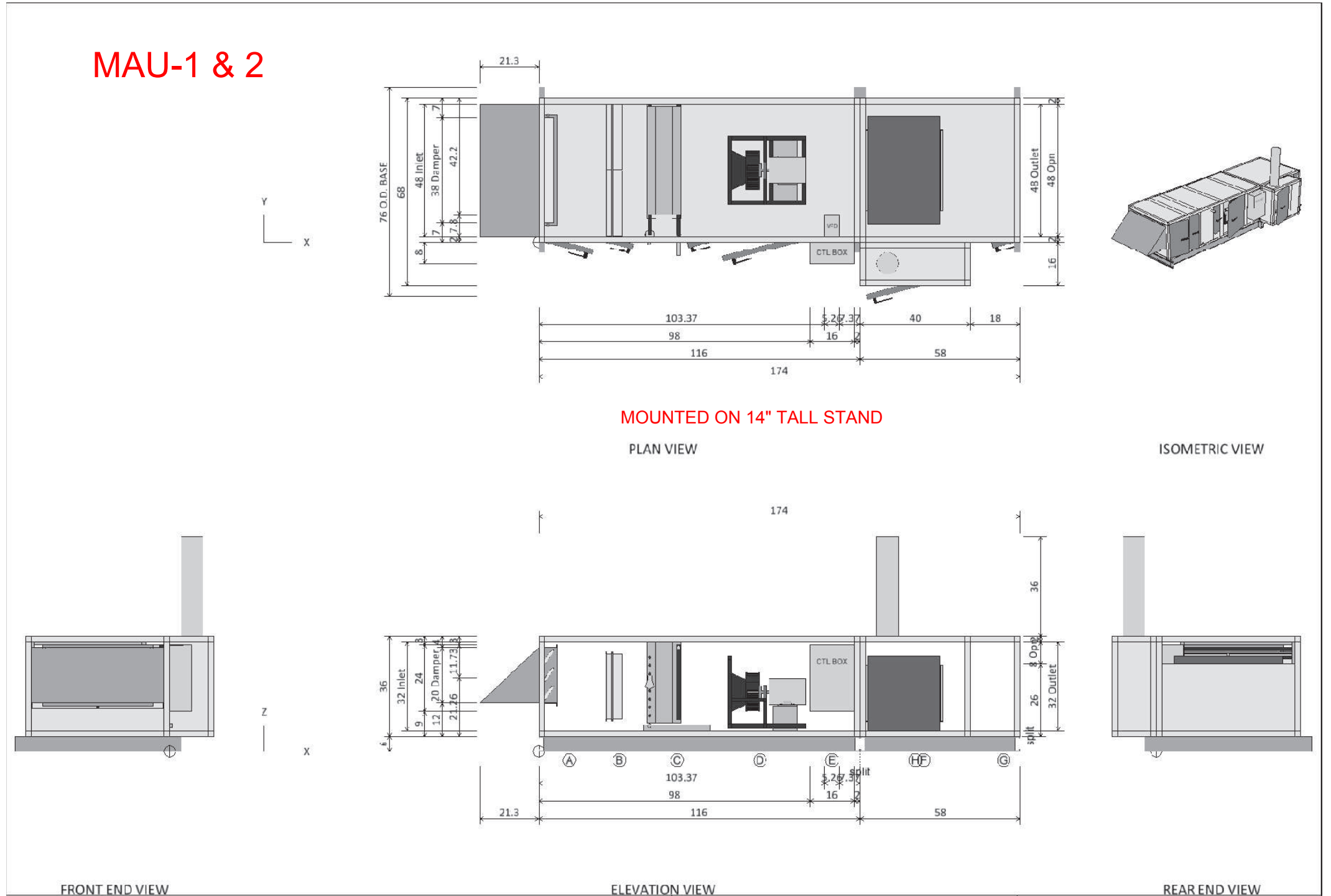
Job Number: 1B7H1M
 Job Name: 21900088 - Taj Hotel - Boston

Page 9 of 18

Prepared Date:

8/1/2019
 www.DaikinApplied.com

MAU-1 & 2



Plan/Elevation	Unit Tag: DOAS-1 (DX Coil, Gas Heat)	Sales Office: HTS New England (Boston)	 13600 Industrial Park Blvd, Minneapolis, MN 55441 www.DaikinApplied.com Software Version: 11.83
Product: Skyline Air Handler	Project Name: 21900088 - Taj Hotel - Boston Public Amenities Renovations		
Model: OAH008GDGM	Aug. 1, 2019 Ver/Rev:	Sheet: 1 of 1 Scale: NTS Tolerance: +/-0.25" Dwg Units: in	

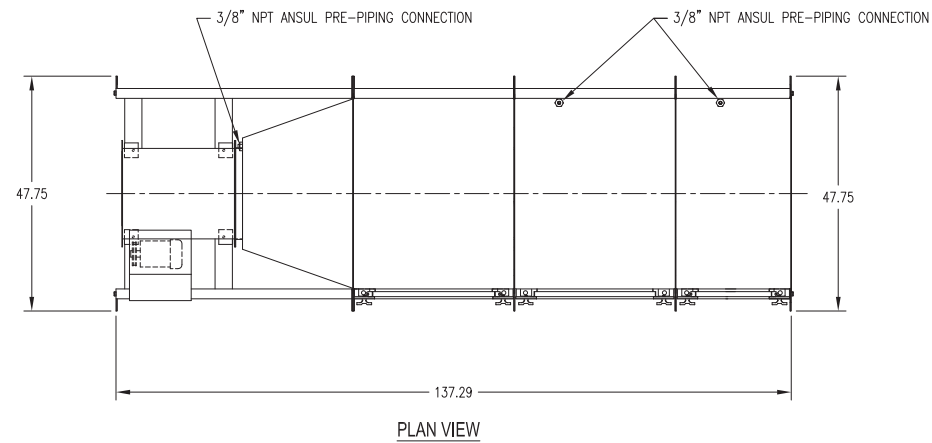
3. MECHANICAL EQUIPMENT

NOTES:

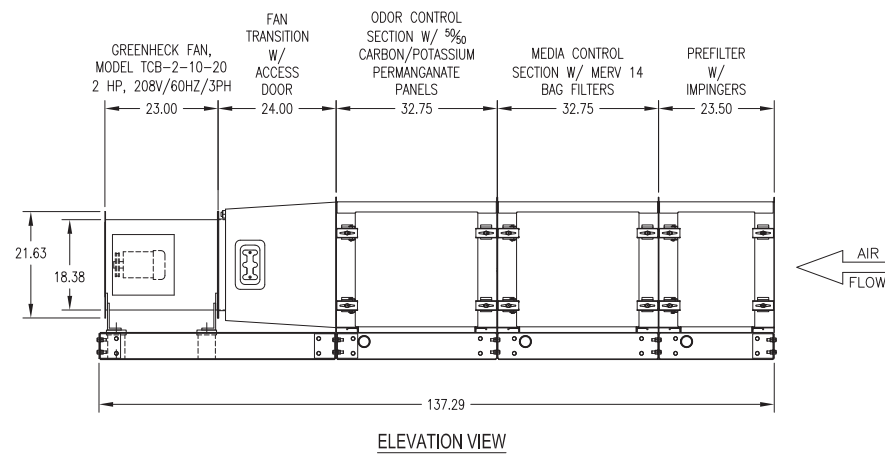
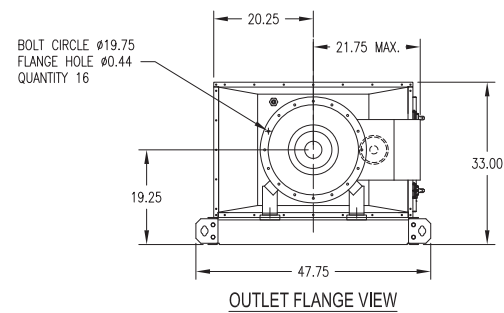
- 1.0 FIRE SUPPRESSION PRE-PIPING:
- 1.1 ANSUL R-102 FIRE SUPPRESSION NOZZLES (TYPE 1W) PLUMBED IN ACCORDANCE WITH ANSUL R-102 RESTAURANT FIRE SUPPRESSION SYSTEM MANUAL. MULTIPLE GREASE VIPER SECTIONS MAY BE PLUMBED BY OTHERS TO SHARE COMMON ANSUL SUPPLY SYSTEM - SEE PLUMBING DETAILS AND RESTRAINTS ON DETAIL (SHT. 2).
- 2.0 DRAIN PLUMBING:
- 2.1 ALLOW FOR MAXIMUM AVAILABLE SLOPE ON DRAIN LINES. INSUFFICIENT SLOPE ON DRAIN LINES WILL RESULT IN POOR DRAINAGE, POOLING OF LIQUID IN THE CABINET(S), AND SYSTEM FAILURE (3" DRAIN LINE RECOMMENDED).
- 2.2 DRAIN LINE TRAP MUST PROVIDE SUFFICIENT WATER COLUMN TO OVERCOME THE INTERNAL STATIC PRESSURE OF THE AIR HANDLING SYSTEM IN WHICH THE GREASE VIPER UNIT IS INSTALLED.
- 2.3 PROTECT ALL DRAIN PIPING AND PLUMBING COMPONENTS THAT ARE SUBJECT TO FREEZING.
- 3.0 SYSTEM SPECIFICATIONS:

CONFIGURATION	1 X 2 DOUBLE PASS - 1 TIER HIGH X 2 CELLS WIDE
HAND	LEFT HAND ACCESS
APPROX. WEIGHT	1,150 LBS.
CAPACITY	1,015 CFM AT 3.94 STATIC INCHES
- 4.0 AGENCY(S) RECOGNITION:
- 4.1 GREASE VIPER UNIT/SYSTEM: ETL LISTED - ELECTROSTATIC AIR CLEANERS, UL 867, FIFTH EDITION.
 ETL LISTED - EXHAUST HOODS FOR COMMERCIAL COOKING EQUIPMENT, UL 710, SIXTH EDITION.
 DESIGNED IN ACCORDANCE WITH RECOMMENDED PRACTICES OF STANDARD FOR VENTILATION CONTROL AND FIRE PROTECTION OF COMMERCIAL COOKING OPERATIONS, NFPA 96.
- 4.2 FANS FOR KITCHEN EXHAUST SYSTEMS: UL LISTED - POWER ROOF VENTILATORS FOR RESTAURANT EXHAUST APPLIANCES, UL 762.
- 5.0 FIREBARRIER SILICONE SEALANT REQUIRED AT ALL FLANGED CONNECTIONS.
 APPLY SEALANT TO CLEAN, DRY SURFACES WITH SUFFICIENT QUANTITY TO EXTRUDE FROM SEAMS VISIBLE FROM INSIDE THE MODULE(S). VISIBLE GAPS OR VOIDS IN EXTRUDED SEALANT MAY RESULT IN EXTERNAL WATER LEAKS DURING SYSTEM WASH CYCLE. COMPLETE MATING OF FLANGES WITH FASTENERS INSTALLED MUST BE COMPLETED WITHIN (1) HOUR TO PREVENT PRE-MATURE CURING OF SEALANT.
 PROTECT INTERNAL AND EXTERNAL SEAMS FROM WATER / MOISTURE FOR (48) HOURS MINIMUM.
 FIREBARRIER SILICONE SEALANT PROPERTIES:

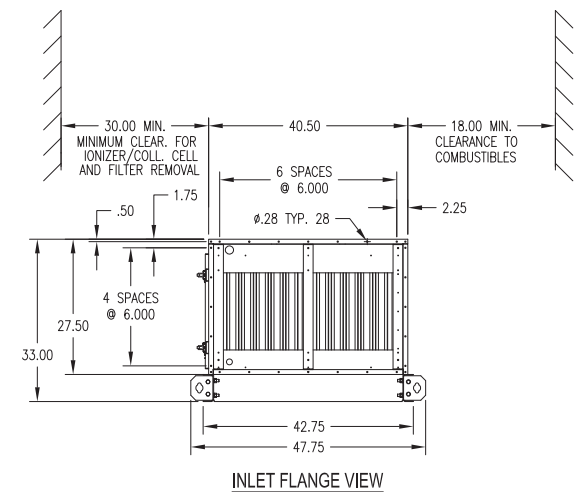
TOOL / WORK TIME	20 MINUTES
SKIN OVER TIME	60 MINUTES MAXIMUM
CURING TIME	48 HOURS
MAXIMUM STRENGTH	21 DAYS



PCU-1



MOUNTED ON 14" TALL STAND



ECN-54366A ECN-54366	EP NUMBER	DIMENSIONS ARE IN INCHES		BUCKLEY ASSOCIATES PROJECT: TAJ HOTEL PCU-1	TRION [®] <small>PROPERTY OF TRION, Sanford, NC 27330</small>			TITLE	REV
		TOLERANCES—UNLESS OTHERWISE SPECIFIED			DWG	SYSTEM OUTLINE		A	
		.X OR X/X ±.05	CONC .005 TIR			GVS-1X2			
		.XX ±.03	BEND RAD: DWG 122223	04/24/19	04/24/19	04/24/19	SHEET	1/2	
		.XXX ±.015	FINISH: NONE						
		ANGULAR ±1°	REMOVE BURRS AND SHARPS						

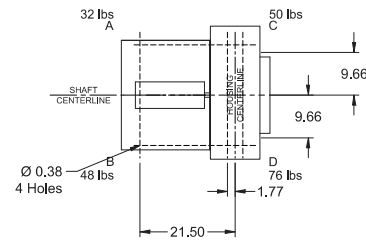
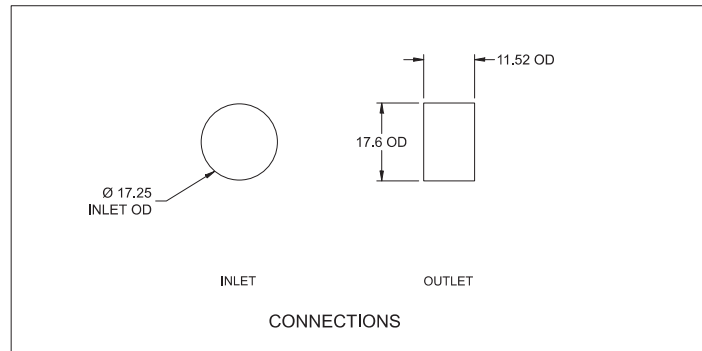
3. MECHANICAL EQUIPMENT



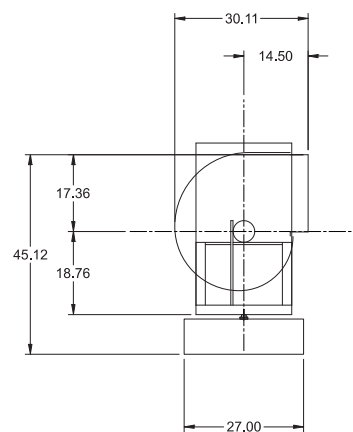
Printed Date: 06/04/2019
 Job: TAJ HOTEL BOSTON MA
 Mark: TEF-3
 Model: USFD-116-BI

Model: USFD-116-BI

TEF-3

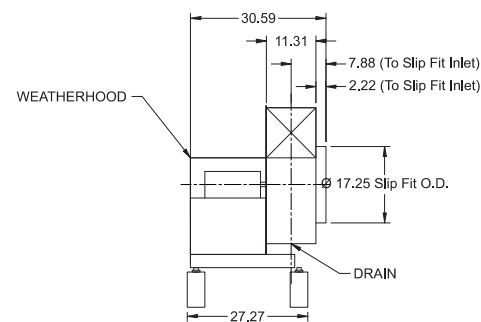


FAN FOOTPRINT



SIDE VIEW

*SIDE VIEW IS VIEWED FROM DRIVE SIDE
 *DISCHARGE POSITION CAN NOT BE MODIFIED IN FIELD
 *FANS ARE SUBJECT TO ±.125 INCH TOLERANCE
 *DUE TO CONTINUAL IMPROVEMENTS DIMENSIONS MAY CHANGE



END VIEW

Notes: All dimensions shown are in units of in.

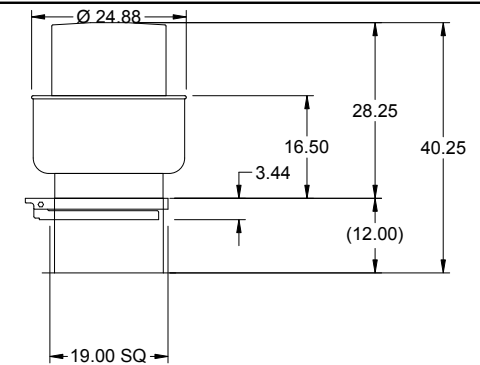


TEF-A

Printed Date: 08/09/2019
 Job: Taj - Amenties Rooftop
 Mark: TEF-A
 Model: CUE-099-VG

Model: CUE-099-VG

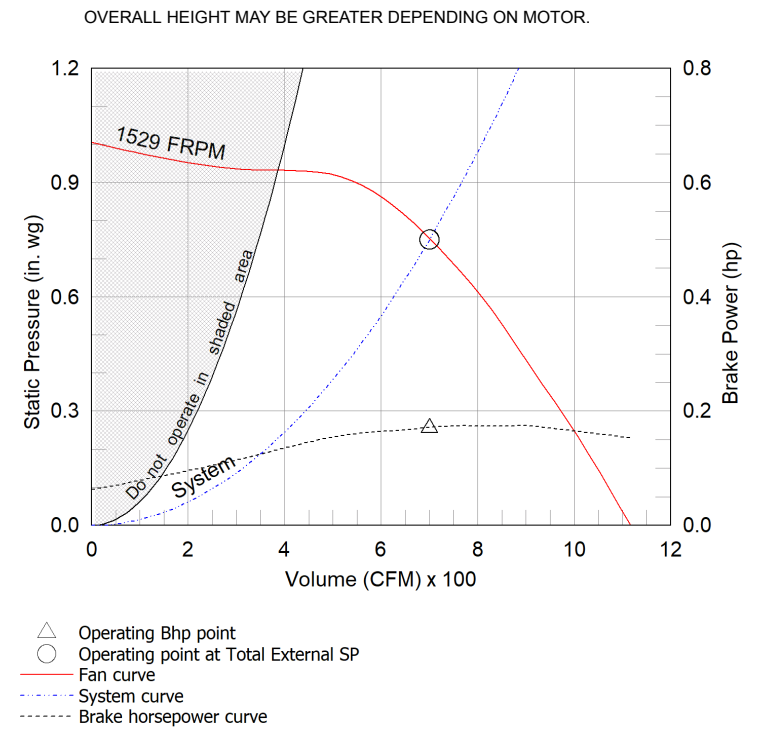
Direct Drive Upblast Centrifugal Roof Exhaust Fan



Dimensional	
Quantity	1
Weight w/o Acc's (lb)	37
Weight w/ Acc's (lb)	69
Optional Damper (in.)	12 x 12
Roof Opening (in.)	14.5 x 14.5

Performance	
Requested Volume (CFM)	700
Actual Volume (CFM)	700
Total External SP (in. wg)	0.75
Fan RPM	1529
Operating Power (hp)	0.17
Elevation (ft)	30
Airstream Temp.(F)	70
Air Density (lb/ft3)	0.075
Tip Speed (ft/min)	4,478
Static Eff. (%)	48

Motor	
Motor Mounted	Yes
Size (hp)	1/4
Voltage/Cycle/Phase	115/60/1
Enclosure	ODP
Motor RPM	1725
Windings	1
FLA (Amps)	2.85



OVERALL HEIGHT MAY BE GREATER DEPENDING ON MOTOR.

Sound Power by Octave Band

Sound Data	62.5	125	250	500	1000	2000	4000	8000	LwA	dBA	Sones
Inlet	73	71	71	66	62	61	57	48	69	58	8.8

Notes:

All dimensions shown are in units of in.
 *NEC FLA - based on tables 430.248 or 430.250 of National Electrical Code 2014. Actual motor FLA may vary, for sizing thermal overload, consult factory.
 LwA - A weighted sound power level, based on ANSI S1.4
 dBA - A weighted sound pressure level, based on 11.5 dB attenuation per Octave band at 5 ft - dBA levels are not licensed by AMCA International
 Sones - calculated using AMCA 301 at 5 ft



CAPS 4.29.1685

Generated by: amitzan@c3boston.com
 Z:\CAPs Selections\Taj - Amenties Rooftop.gfcj

Page 5 of 8



