

# SAFAR REALTY GROUP, LLC

235 NEWBURY STREET,  
BOSTON, MA 02116

BACK BAY ARCHITECTURAL  
COMMISSION

DESIGN REVIEW HEARING

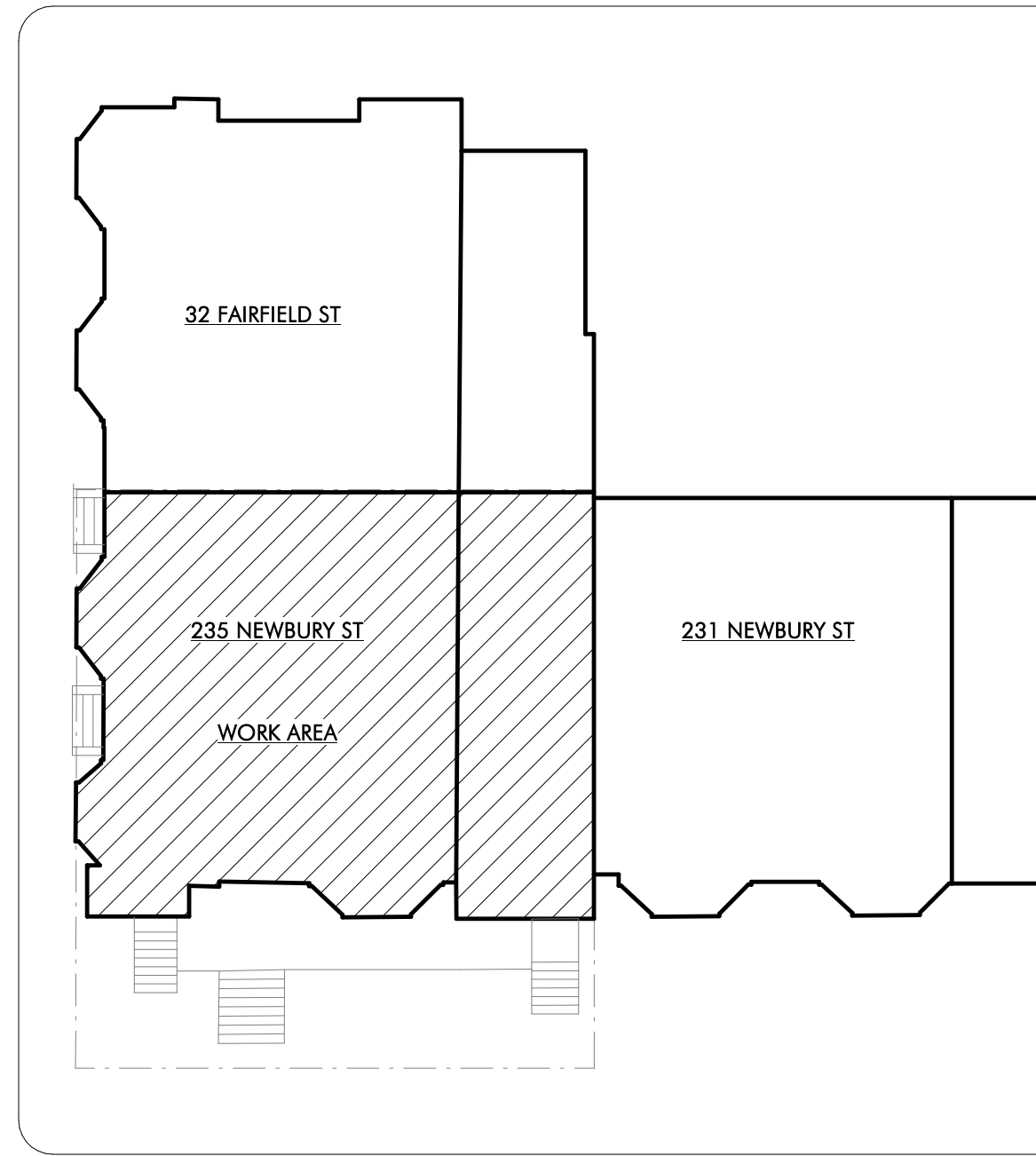
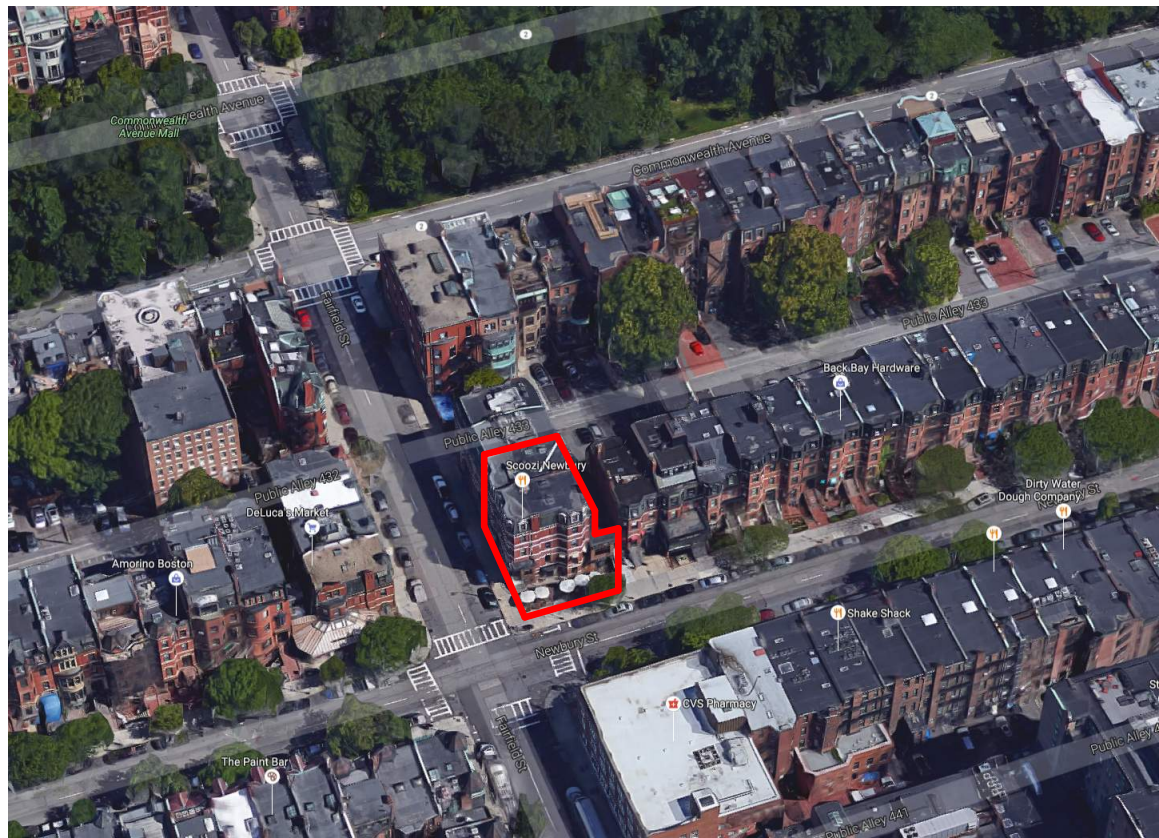
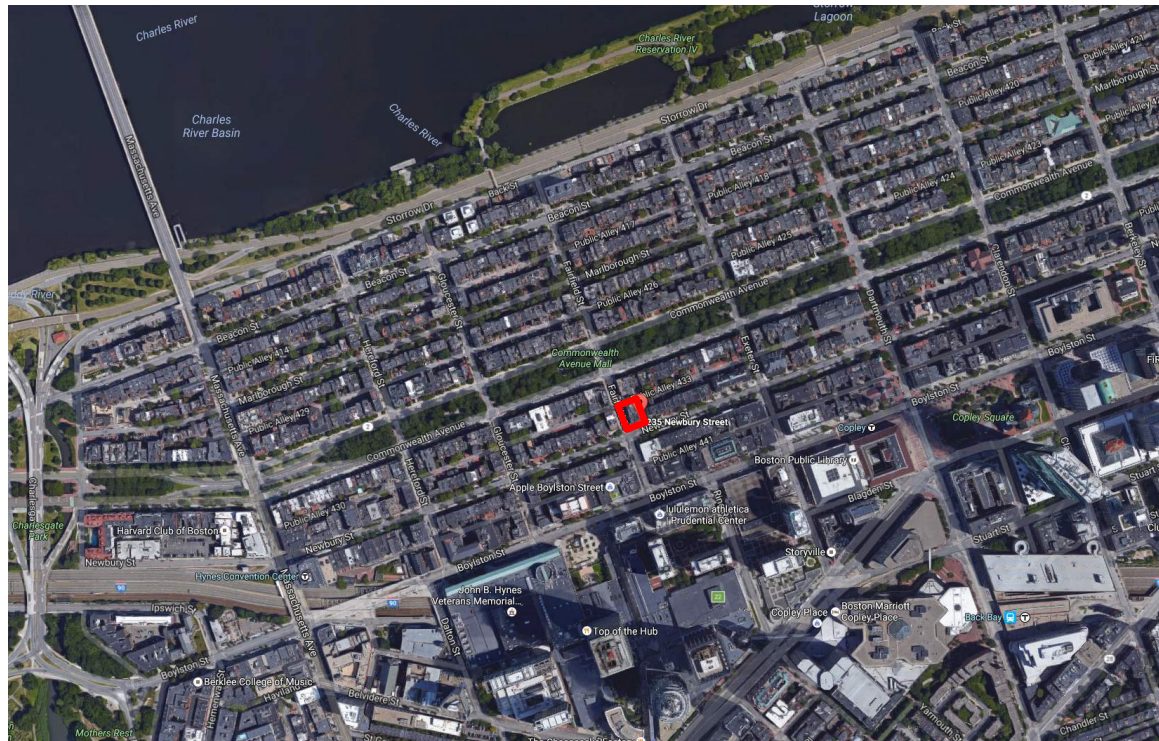
APRIL 10, 2019



## SHEETLIST

- 1.0 SITE LOCATION
- 2.0 EXISTING SITE PHOTOS
- 2.1 EXISTING SITE PHOTOS CONT.
- 3.0 BBAC VIOLATIONS OVERVIEW
- 4.0 PROPOSED DESIGN MODIFICATIONS
- 5.0 PROPOSED SIGNAGE DETAILS
- 6.0 PROPOSED BIRD'S EYE VIEW
- 7.0 PROPOSED STREET PERSPECTIVE
- 8.0 PRECEDENT IMAGES - CANOPY

EMBARC



← NEWBURY STREET →





235 NEWBURY STREET - PHOTO TAKEN FROM ACROSS NEWBURY ST.



235 NEWBURY STREET - SERAFINA ENTRY



235 NEWBURY STREET - SAFAR SALON ENTRY (NEWBURY & FAIRFIELD)



235 NEWBURY STREET - PHOTO TAKEN FROM ACROSS NEWBURY ST.



235 NEWBURY STREET - SAFAR SALON ENTRY (NEWBURY)



235 NEWBURY STREET - SAFAR SALON ENTRY (NEWBURY)

BBAC VIOLATION #4:  
VISIBLE ROOFTOP  
MECHANICAL EQUIPMENT

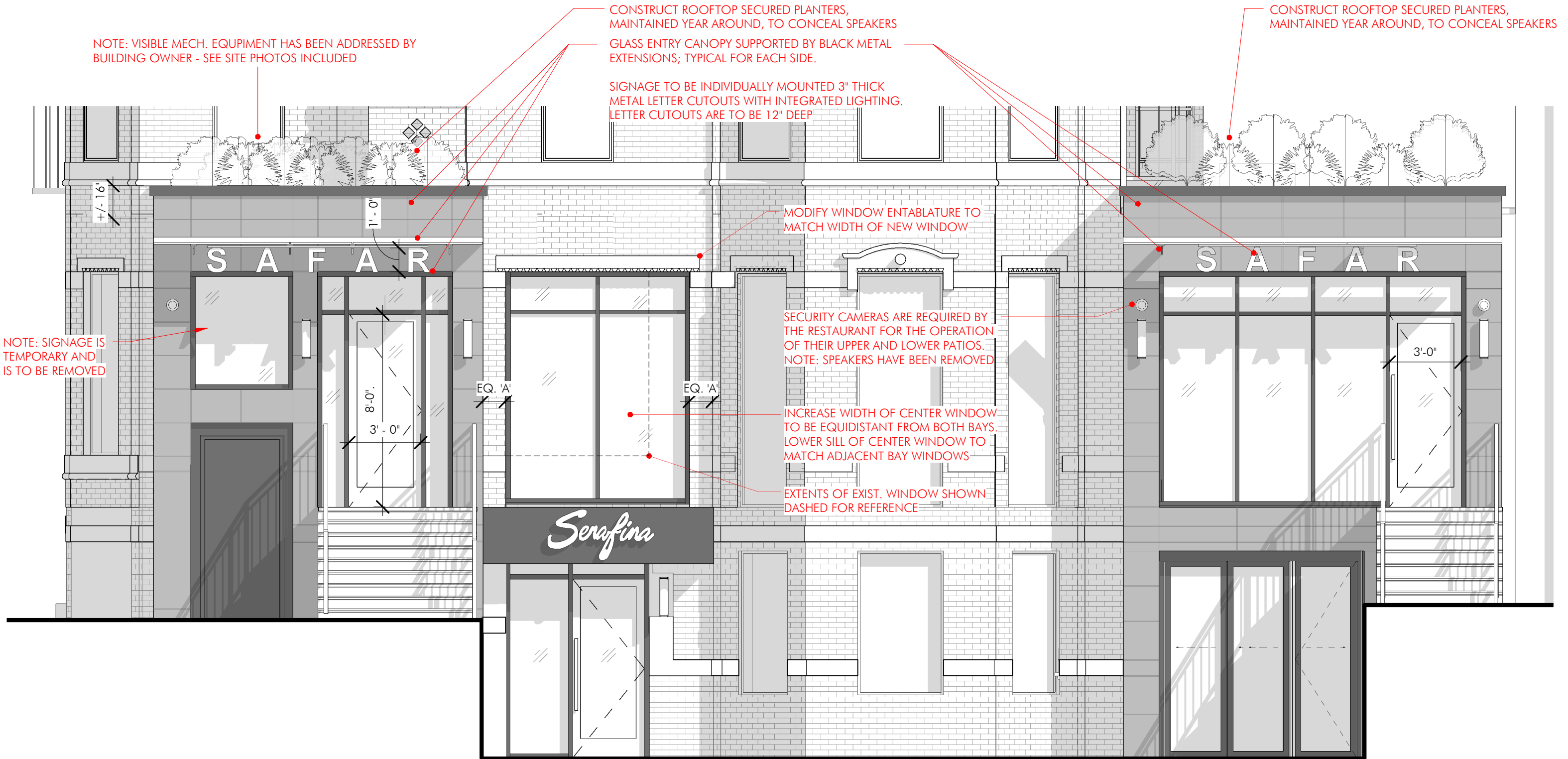
BBAC VIOLATION #1:  
ENTRANCE CANOPY

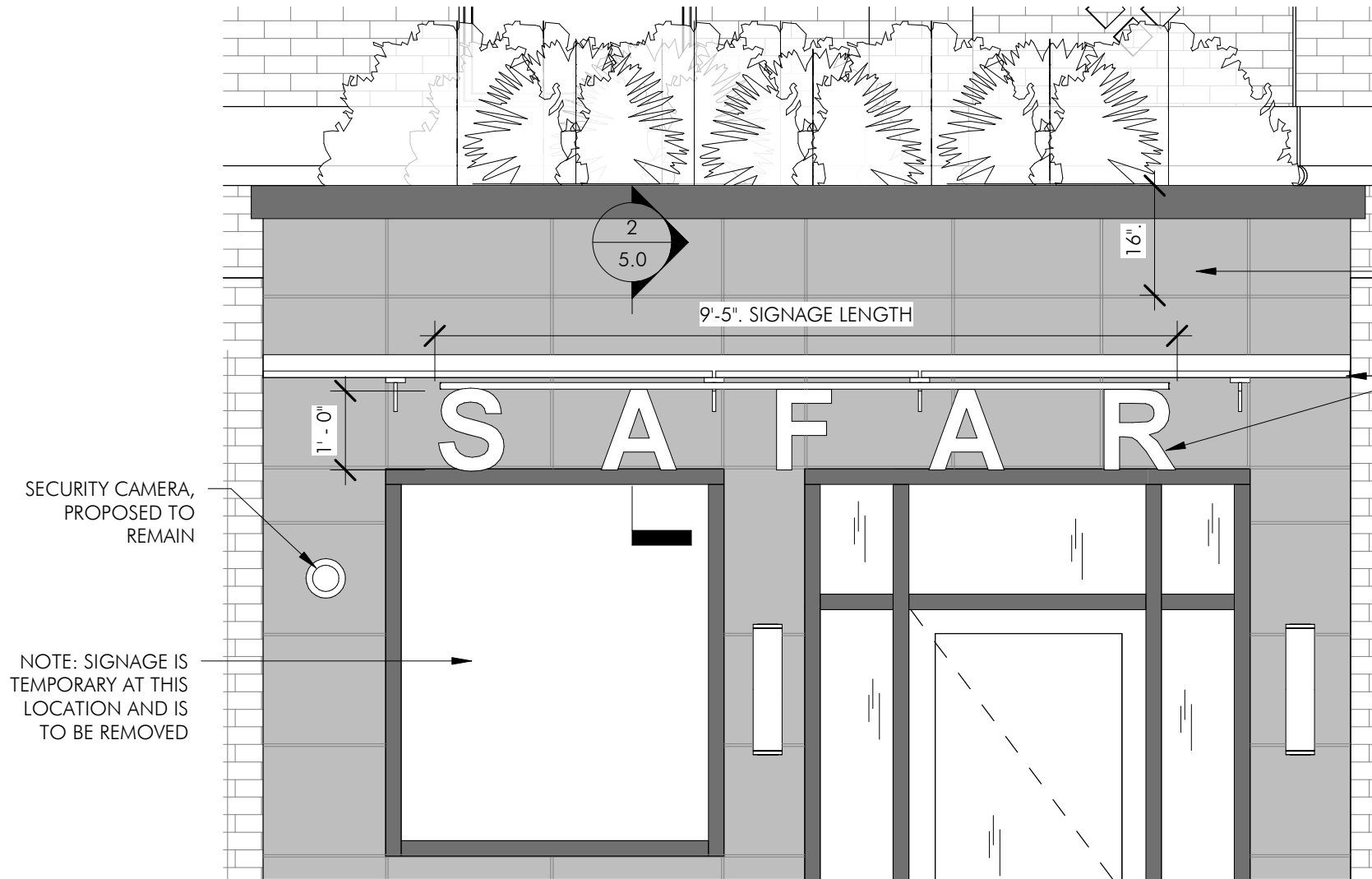
BBAC VIOLATION #3:  
SPEAKERS & SECURITY  
EQUIPMENT

BBAC VIOLATION #2:  
SIGNAGE

BBAC VIOLATION #3:  
SPEAKERS & SECURITY EQUIPMENT







METAL PANEL  
BANDING

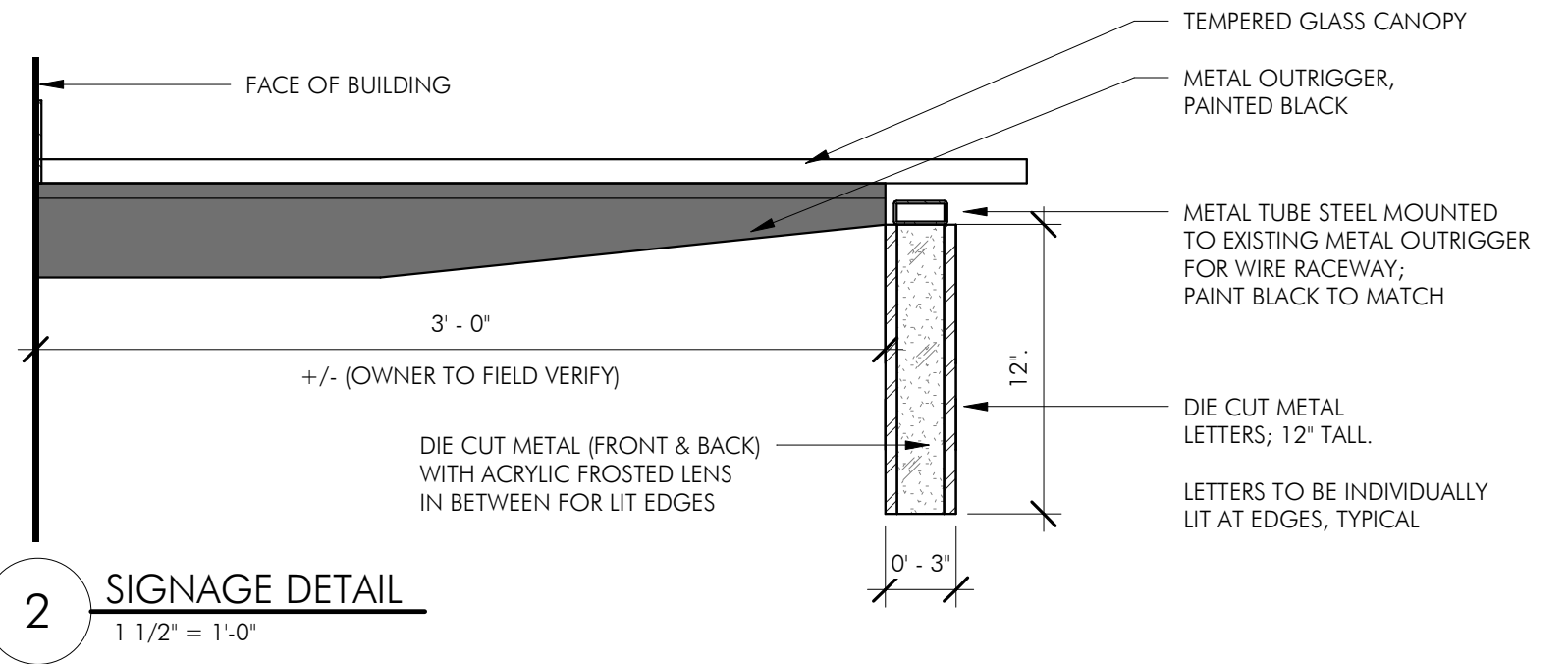
GLASS AND METAL ENTRY CANOPY  
WITH DIE CUT SIGNAGE LETTERING

NOTE: SIGNAGE LETTERING IS ATTACHED  
TO THE END OF THE METAL CANOPY STRUCTURE  
AND IS HELD OFF THE FACE OF THE BUILDING  
BY APPROX. 3'-0".

SECURITY CAMERA,  
PROPOSED TO  
REMAIN

NOTE: SIGNAGE IS  
TEMPORARY AT THIS  
LOCATION AND IS  
TO BE REMOVED

**1** PROPOSED 'SAFAR' SIGNAGE  
1/2" = 1'-0"



**2** SIGNAGE DETAIL  
1 1/2" = 1'-0"

NOTE: OWNER TO SUBMIT FINAL SIGNAGE SHOP DRAWING TO BBAC FOR  
REVIEW & APPROVAL PRIOR TO FABRICATION / INSTALL









MODERN GLASS & STEEL CANOPY - LOCATED AT 240 NEWBURY STREET



CANOPY AS CONSTRUCTED - LOCATED AT 235 NEWBURY STREET