

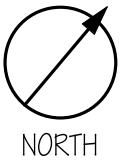
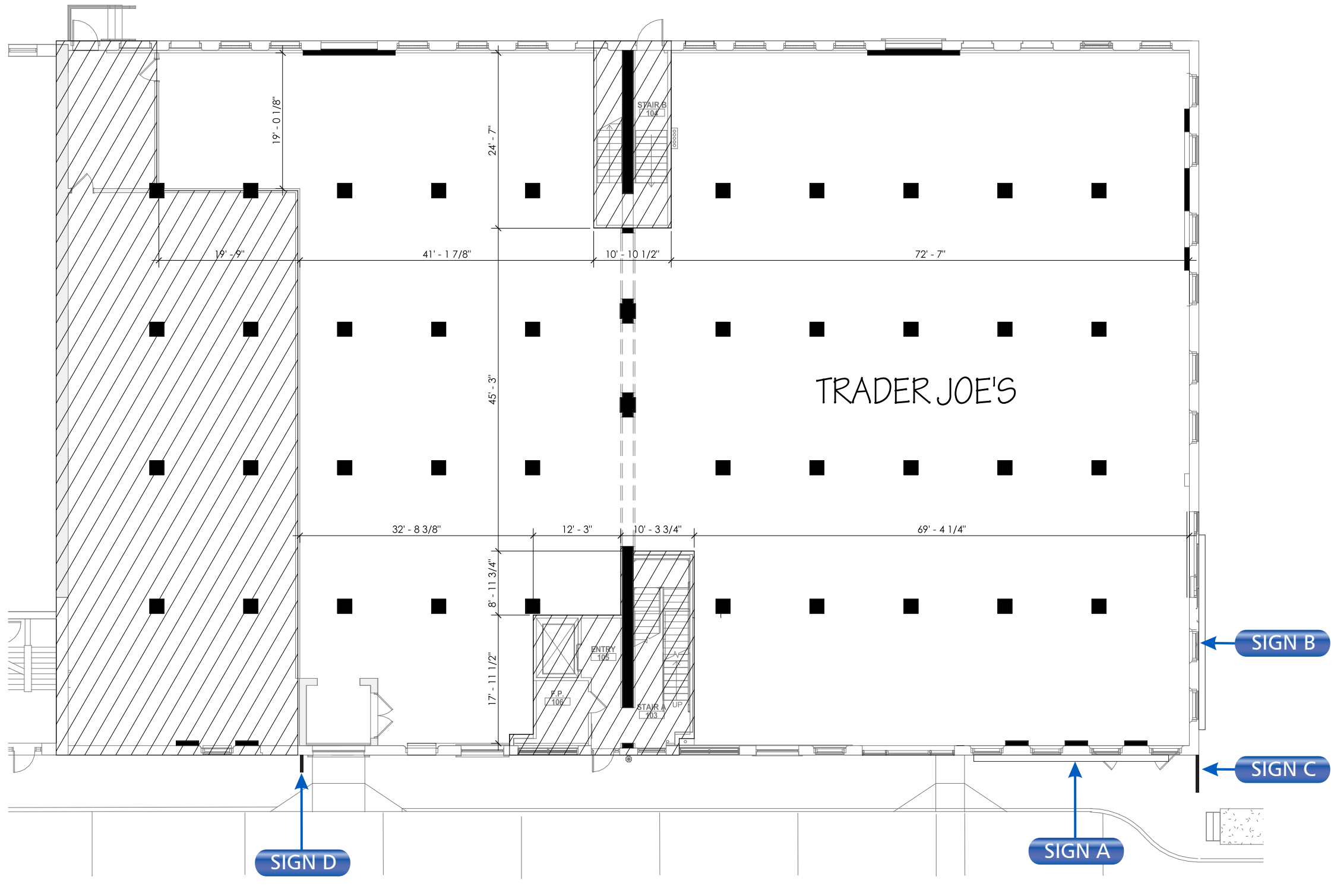
TRADER JOE'S

44 THOMSON PLACE
BOSTON, MA 02210

TRADER JOE'S

TRADER JOE'S

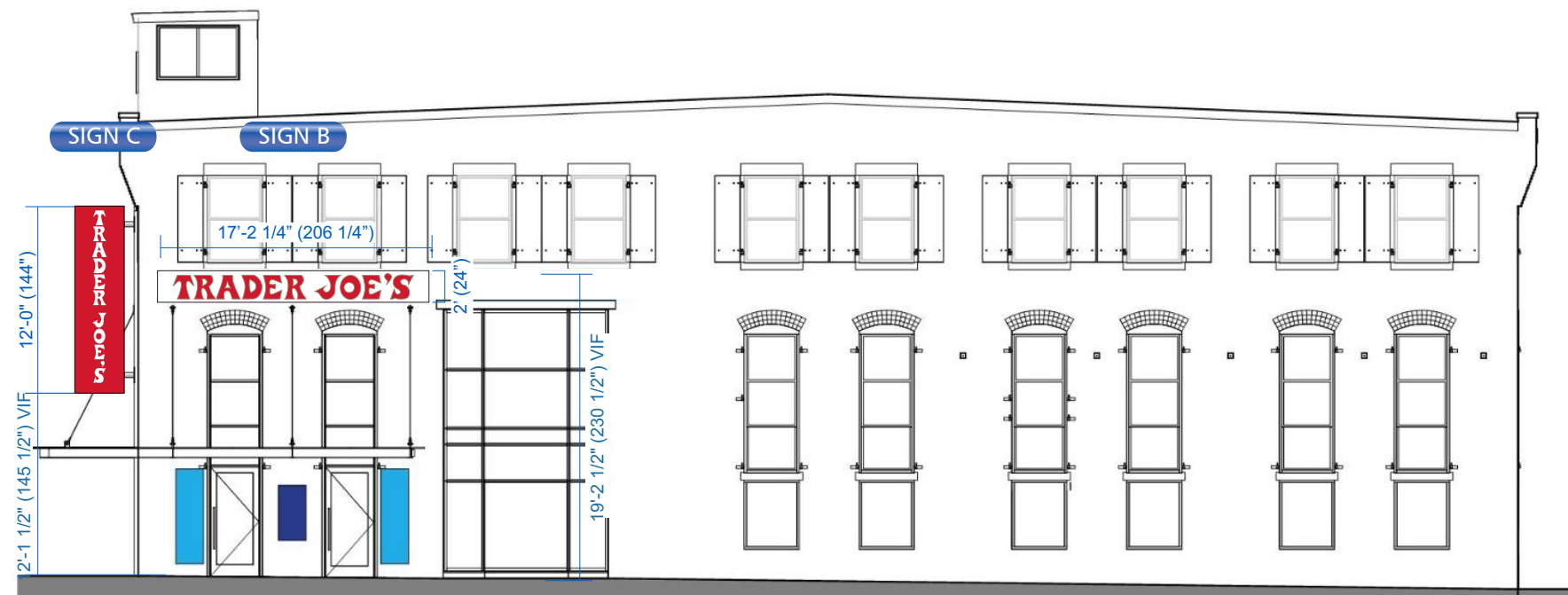




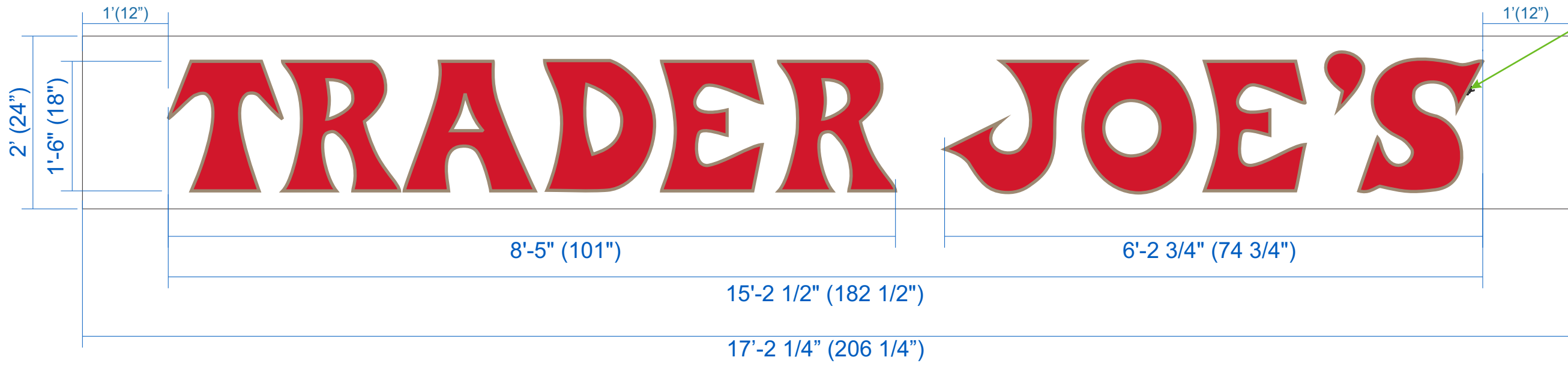
ELEVATION ALONG THOMSON PLACE
SCALE: 3/32" = 1'



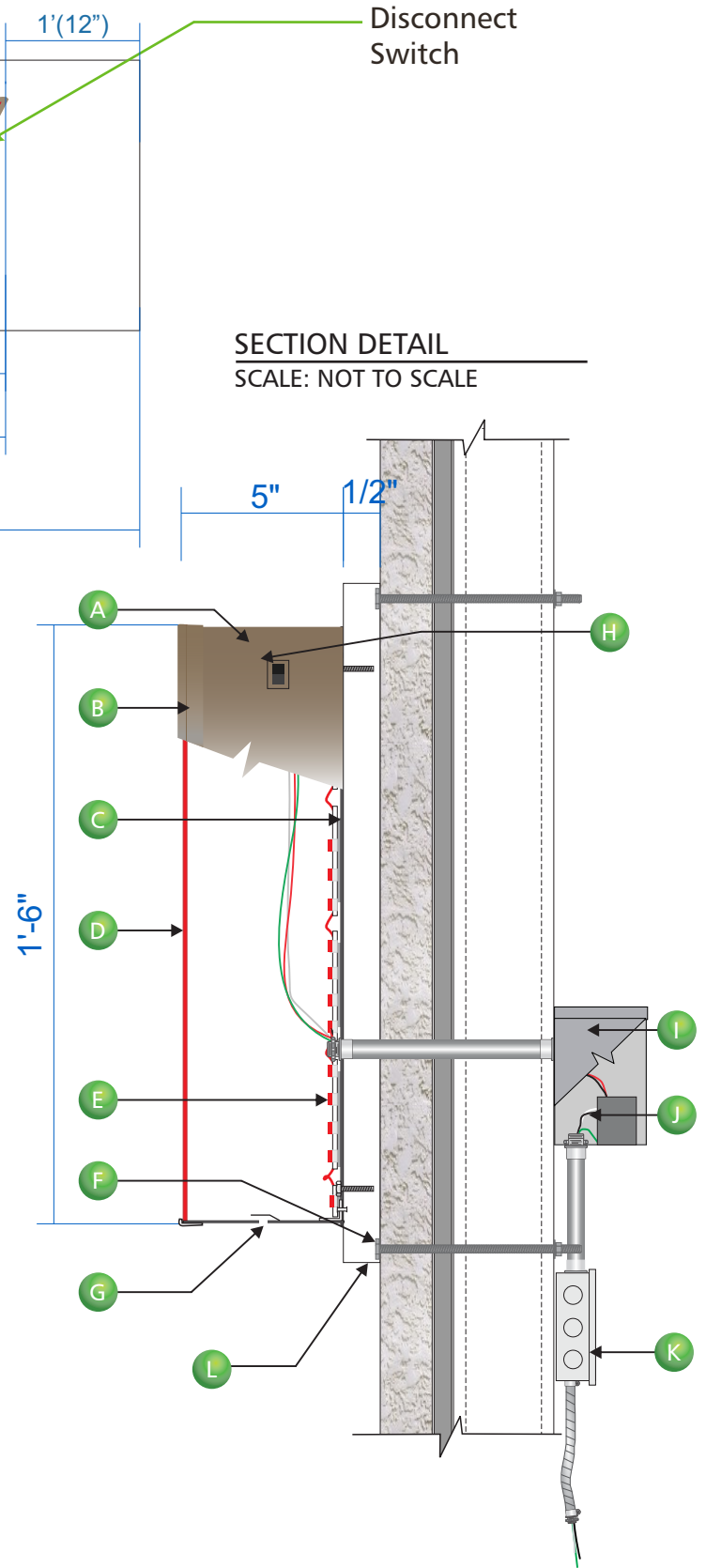
ELEVATION AT PLAZA
SCALE: 3/32" = 1'







SECTION DETAIL
SCALE: NOT TO SCALE



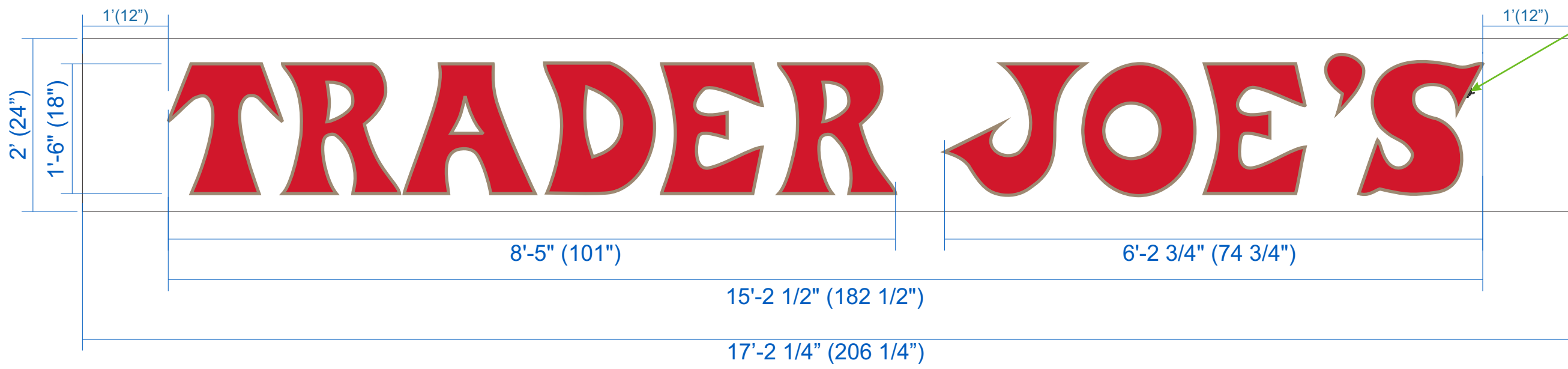
NOTES:
DEDICATED 120V/20AMP AC CIRCUIT IS REQUIRED AND TO BE WITHIN 6' OF THE SIGN, PROVIDED BY OTHERS PRIOR TO SIGN INSTALLATION

NOTES:
ALL ELECTRICAL PARTS & ASSEMBLIES UL LISTED. UL LABELS TO BE LOCATED AT DISCONNECT SWITCH IF REQUIRED.

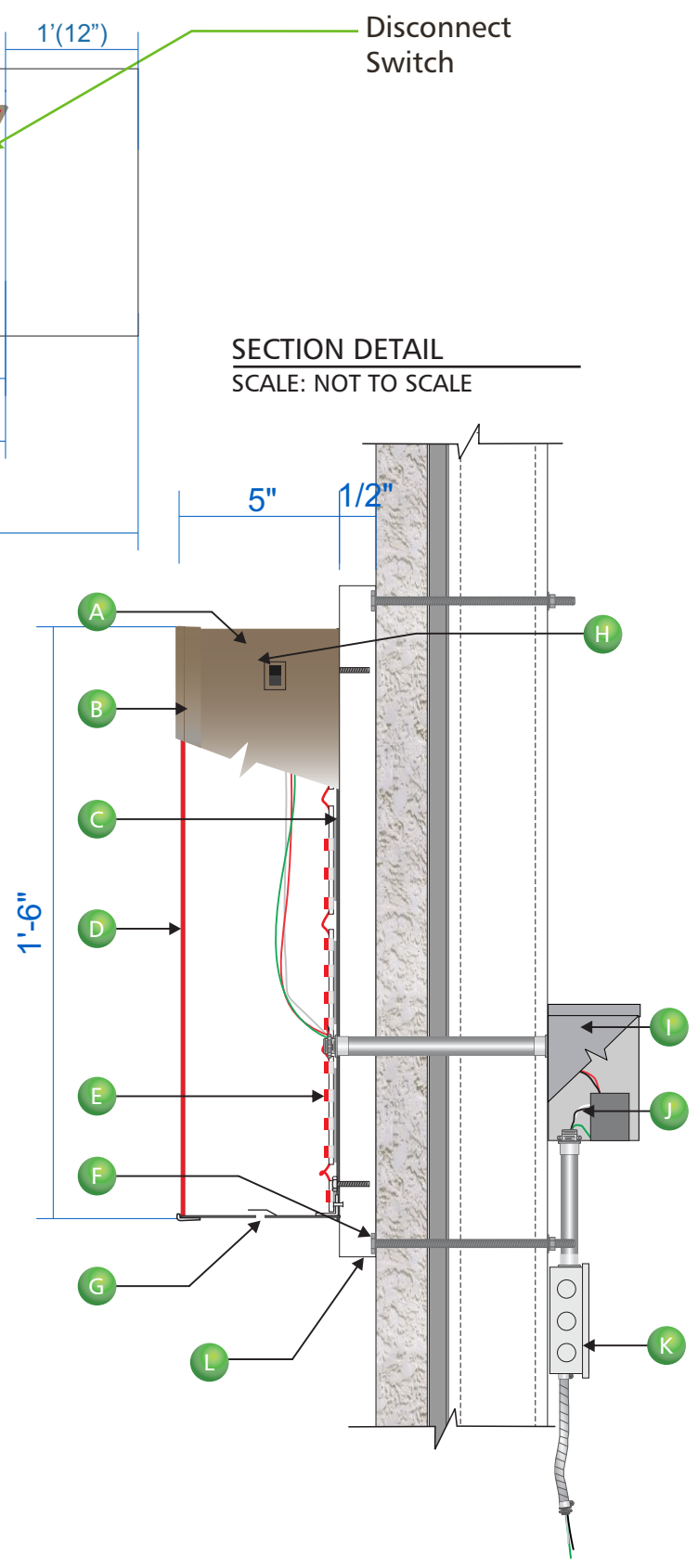
Color Key

- 2793 Red Acrylic
- Pre-Finished Bronze

- A** .040 dark bronze anodized aluminum returns
- B** 1" continuous jewelite bronze anodized trim cap
- C** .063 aluminum backs with white inside.
- D** .177 #2793 red acrylic face
- E** Red LED lighting
- F** Non-corrosive 1/4"- 20 thru-bolts with fender washers & nuts. Mounting hardware may vary to suit wall conditions
- G** 1/4" diameter drain hole (min. 2 per letter) with light baffle
- H** Disconnect switch
- I** Enclosure box
- J** LED power supply
- K** 120V Primary power junction box by others prior to installation
- L** 1/2" White Wood Backer Panel



SECTION DETAIL
SCALE: NOT TO SCALE



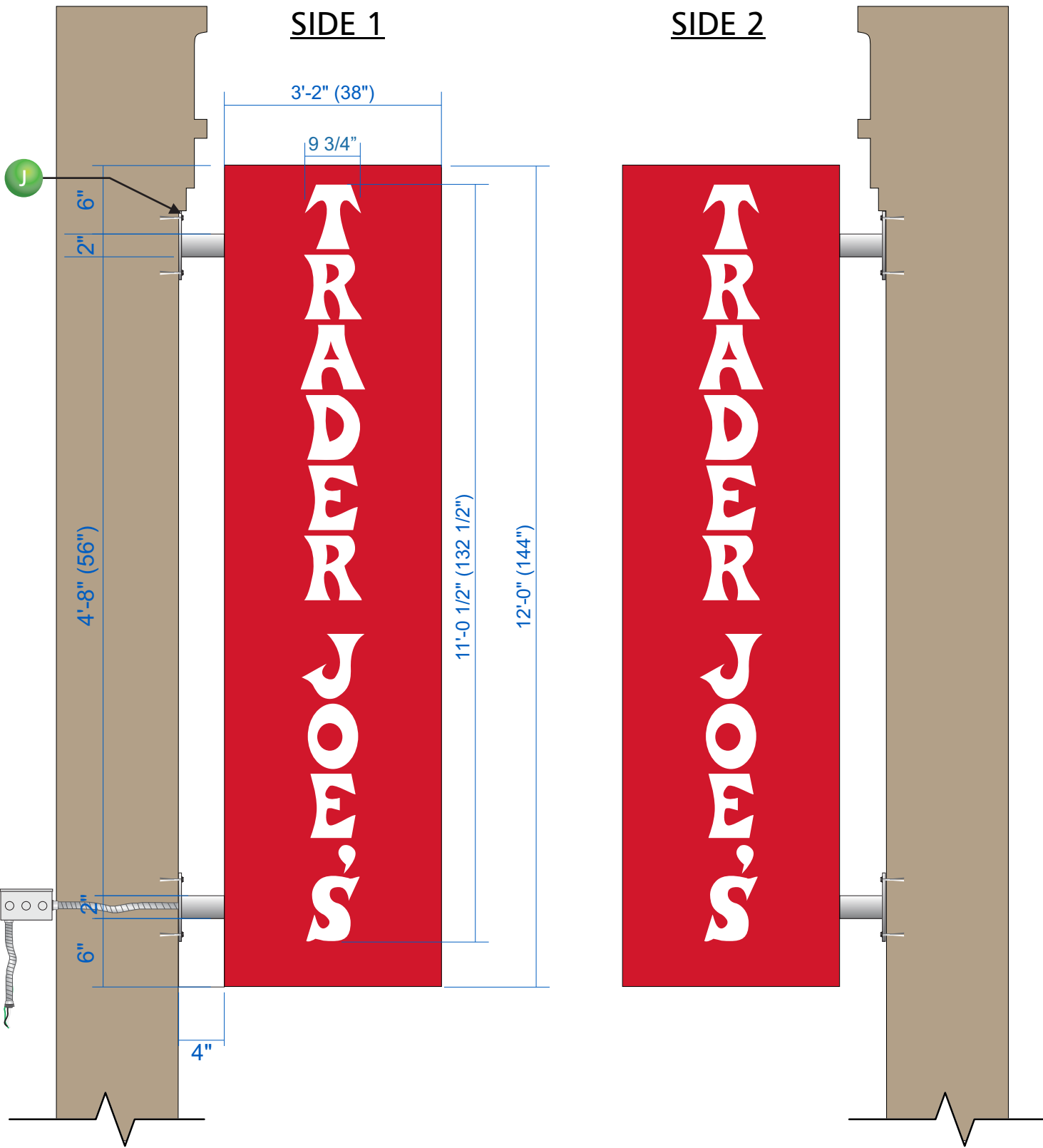
NOTES:
DEDICATED 120V/20AMP AC CIRCUIT IS REQUIRED AND TO BE WITHIN 6' OF THE SIGN, PROVIDED BY OTHERS PRIOR TO SIGN INSTALLATION

NOTES:
ALL ELECTRICAL PARTS & ASSEMBLIES UL LISTED. UL LABELS TO BE LOCATED AT DISCONNECT SWITCH IF REQUIRED.

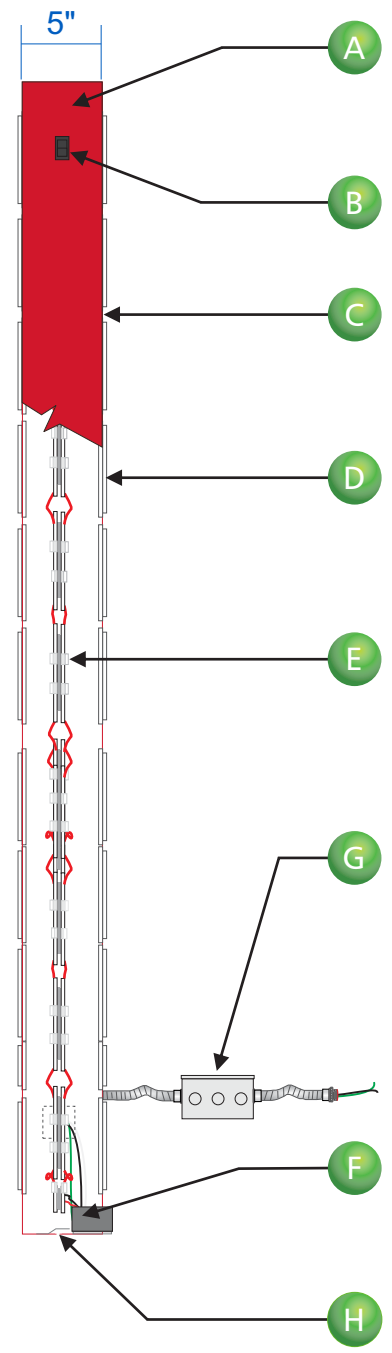
Color Key

- 2793 Red Acrylic
- Pre-Finished Bronze

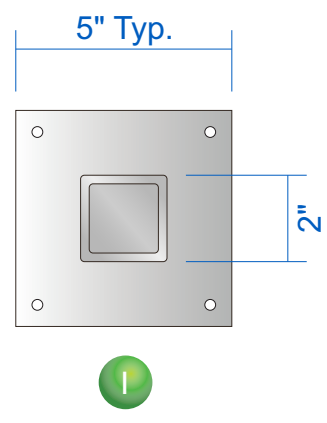
- A** .040 dark bronze anodized aluminum returns
- B** 1" continuous jewelite bronze anodized trim cap
- C** .063 aluminum backs with white inside.
- D** .177 #2793 red acrylic face
- E** Red LED lighting
- F** Non-corrosive 1/4"- 20 thru-bolts with fender washers & nuts. Mounting hardware may vary to suit wall conditions
- G** 1/4" diameter drain hole (min. 2 per letter) with light baffle
- H** Disconnect switch
- I** Enclosure box
- J** LED power supply
- K** 120V Primary power junction box by others prior to installation
- L** 1/2" White Wood Backer Panel



SECTION DETAIL
SCALE: NTS



MOUNTING PLATE DETAIL
SCALE: NTS



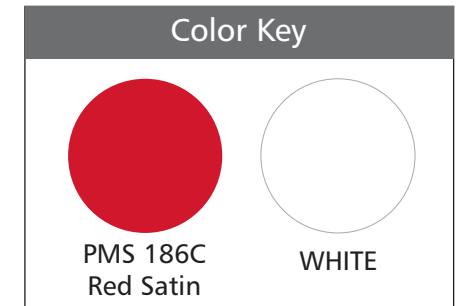
- A** Approx. .080 aluminum returns 5" depth PTM PMS #186C satin finish
- B** Disconnect switch
- C** Approx. .080 aluminum routed faces
- D** 1/2" white acrylic 1/4" reveal push-thru letters
- E** White LEDs
- F** LED power supply
- G** 120V Primary power junction box by others prior to installation
- H** Drain holes w/ Light baffle
- I** 3/8"x 5"x 5" mounting plate/2" radius corner square aluminum tube
- J** Non-corrosive 1/4"- 20 thru-bolts w/ fender washers & nuts. Mounting hardware may vary to suit wall conditions

NOTES:

DEDICATED 120V/20AMP AC CIRCUIT IS REQUIRED AND TO BE WITHIN 6' OF THE SIGN, PROVIDED BY OTHERS PRIOR TO SIGN INSTALLATION

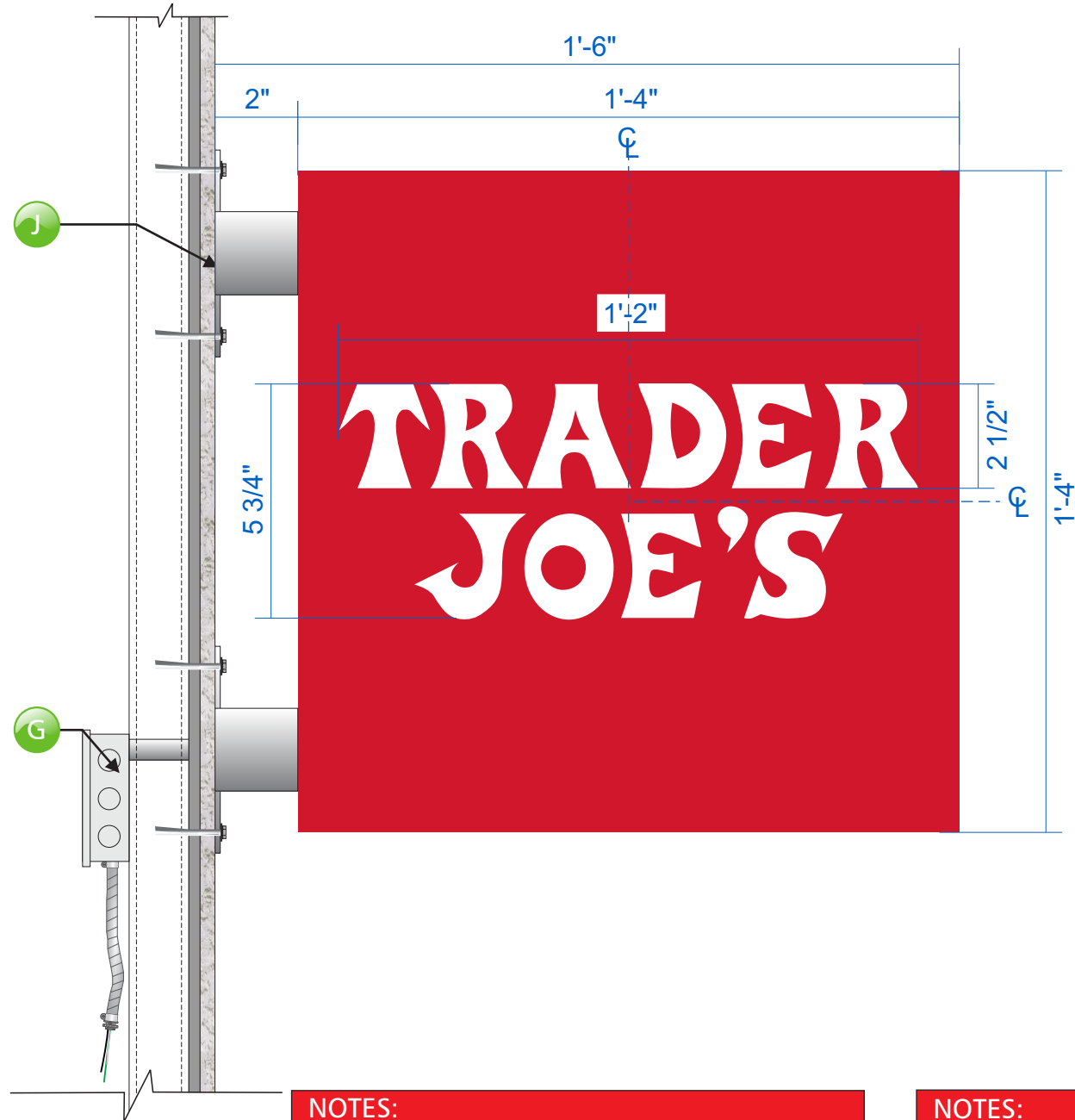
NOTES:

ALL ELECTRICAL PARTS & ASSEMBLIES UL LISTED. UL LABELS TO BE LOCATED AT DISCONNECT SWITCH IF REQUIRED.



FRONT DETAIL

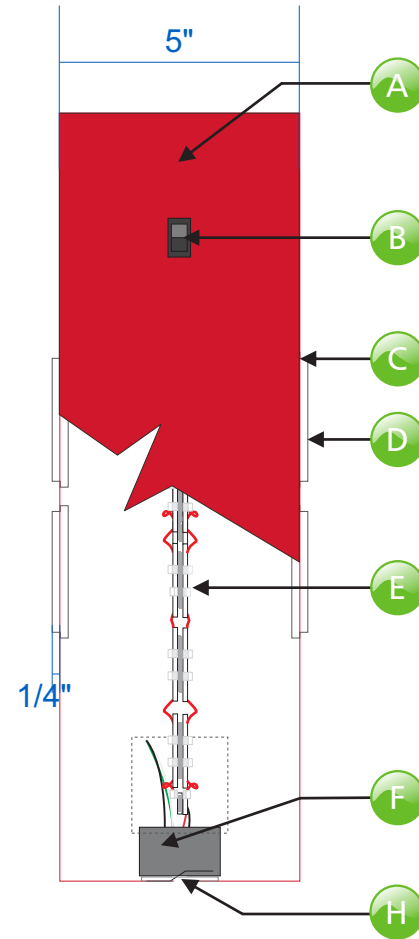
SCALE: NTS



NOTES:
DEDICATED 120V/20AMP AC CIRCUIT IS REQUIRED AND TO BE WITHIN 6' OF THE SIGN, PROVIDED BY OTHERS PRIOR TO SIGN INSTALLATION

SECTION DETAIL

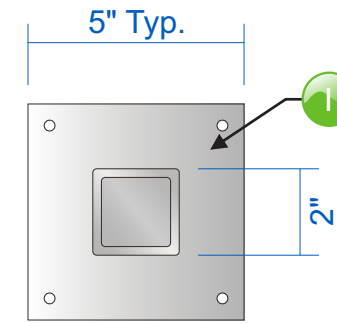
SCALE: NTS



NOTES:
ALL ELECTRICAL PARTS & ASSEMBLIES UL LISTED. UL LABELS TO BE LOCATED AT DISCONNECT SWITCH IF REQUIRED.

MOUNTING PLATE

SCALE: NTS



SIDE 1

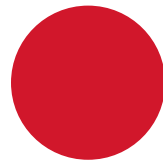
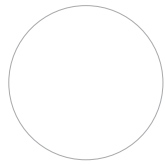
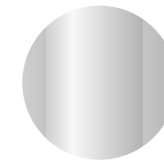


SIDE 2



- A Approx. .080 aluminum returns 5" depth PTM PMS #186C satin finish
- B Disconnect switch
- C Approx. .080 aluminum routed faces
- D 1/2" white acrylic 1/4" reveal push-thru letters
- E White LEDs
- F LED power supply
- G 120V Primary power junction box by others prior to installation
- H Drain holes w. Light baffle
- I 3/8"x 5"x 5" mounting plate/2" radius corner square aluminum tube PTM Matthews brushed aluminum
- J Non-corrosive 1/4"- 20 thru-bolts with fender washers & nuts. Mounting hardware may vary to suit wall conditions

Color Key

		
PMS 186C Red Satin	WHITE	MATTHEWS BRUSHED ALUM

CODE:

PLEASE NOTE This site is part of a Comprehensive Sign Plan.

Municipal Code- M-4

- Only 1 sign allowed, not exceeding 2sf in total area, attached to the building or on a rod or post not more than 4ft high & at least 3' in from the street line, & stating only the street number or name of the occupant or occupants of the lot, or both
- Overall height – 4' / No support for a sign shall extend above the cornice line of building to which it is attached
- Max projection 5"