

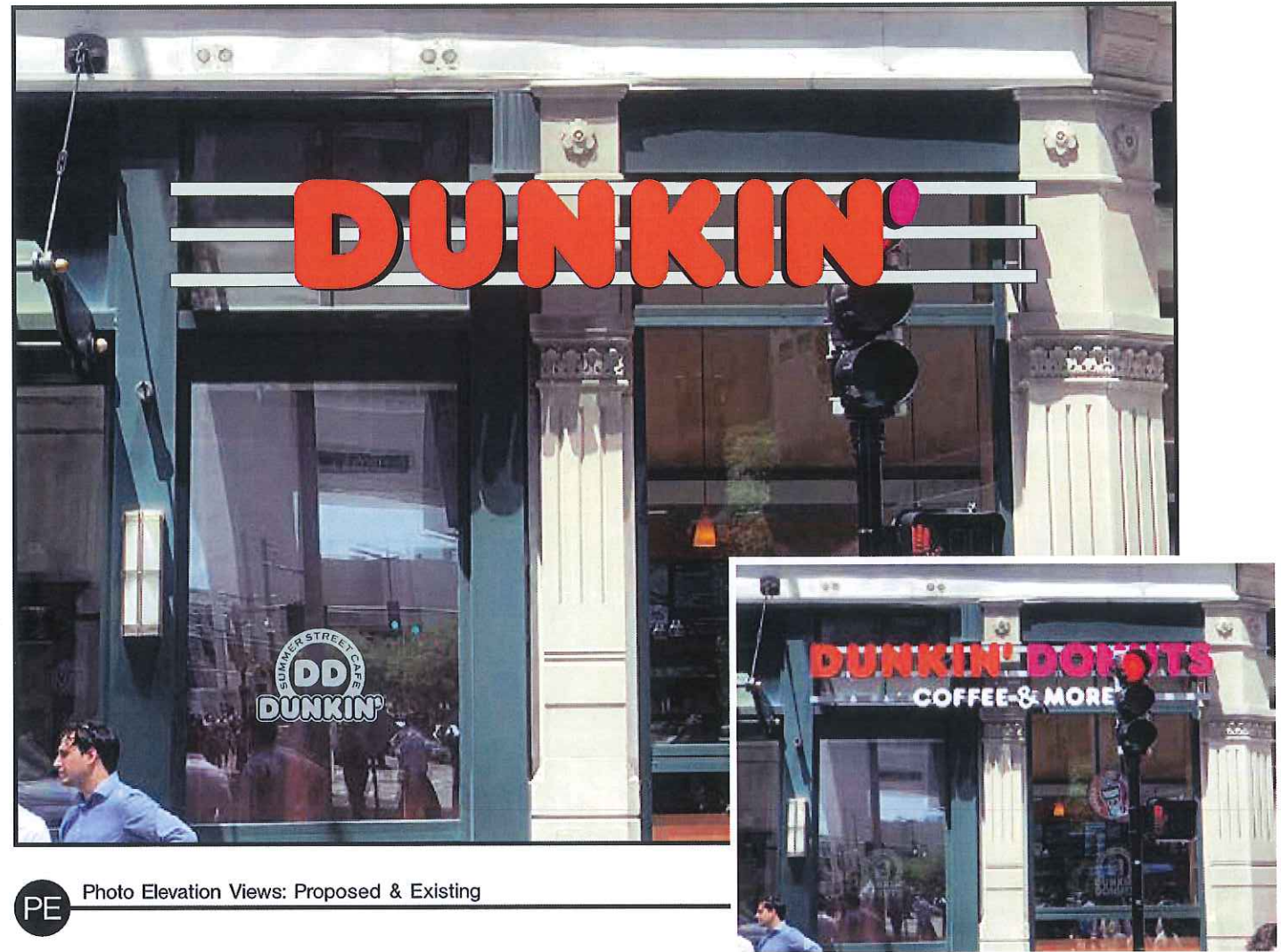
E1 Elevation: (Qty: 1) #9878 Channel Letters Affixed to Mounting Rails
24" x 140" = 23.3 Sq. Ft.

Description:
(Qty: 1) Channel letters mounted to rails.
 * Aluminum returns
 * White Optix faces with trimcap
 * Surface applied vinyl graphics
 * Internally wired L.E.D. illumination
 * Power pack locations **TBD**
 * Letters mounted to custom painted 3" square aluminum rails/raceways
 * Rails to have painted mounting brackets which mount to sides of columns

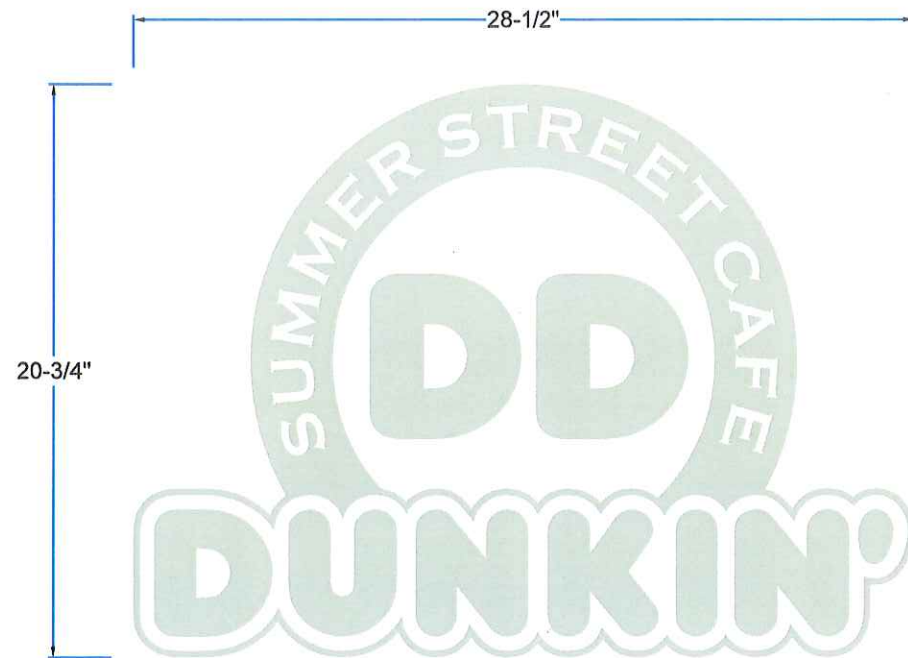
Typeface/Logo:
 * New NextGen 2017 Art on file

Colors:
 * Aluminum Returns - Stock Alumet Charcoal Gray
 * Faces - White Optix #2406
 * Trimcap - Stock Jewelite Bronze 313
 * LEDs - White
 * Vinyl Graphics - DD Orange trans 3M #3630-3123
 - DD Magenta trans 3M #3630-1379
 * Rails - Painted Cool Gray PMS#1c
 * Brackets - Painted Dark Green PMS#553c (to match mullions)

Installation:
 * By ViewPoint
 * Note: Power by others
 * This sign is intended to be installed in accordance with the requirements of Article 600 of the National Electrical Code (NEC) and/or other applicable Local Electrical Codes (LEC). This includes proper grounding and bonding of the sign.



PE Photo Elevation Views: Proposed & Existing



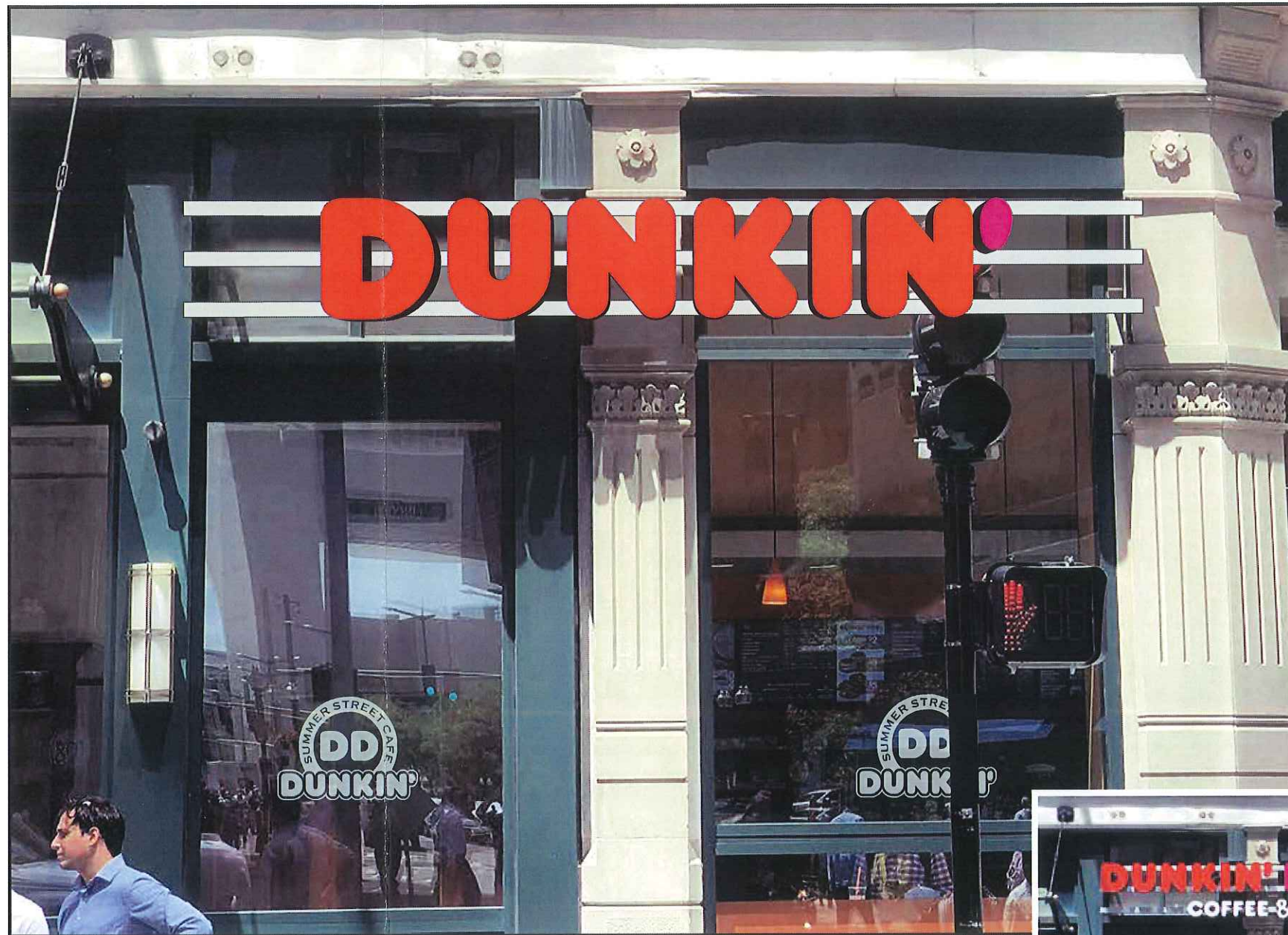
E1 Elevation: (Qty: 5) #9878 Replacement Vinyl Window Graphics
 20-3/4" x 28-1/2" = 4.1 Sq. Ft.

Description:
 (Qty: 5) Vinyl graphics (windows)
 * Second surface applied vinyl window graphics.

Typeface/logo:
 * Artwork Created by VP

Colors:
 * Vinyl - Avery Etchmark #SC5861W

Installation:
 * By ViewPoint



PE Photo Elevation Views: Proposed & Existing



Job:
Dunkin' Donuts

Account Manager:
Sean Donovan

Date:
09.14.18 D1.0

Revisions:

Revisions:

Location:
101 Summer St., Boston, MA

File:
DD BosMA 101Summer vinyl gfx 1a.plt

Designer:
Pete Rivera

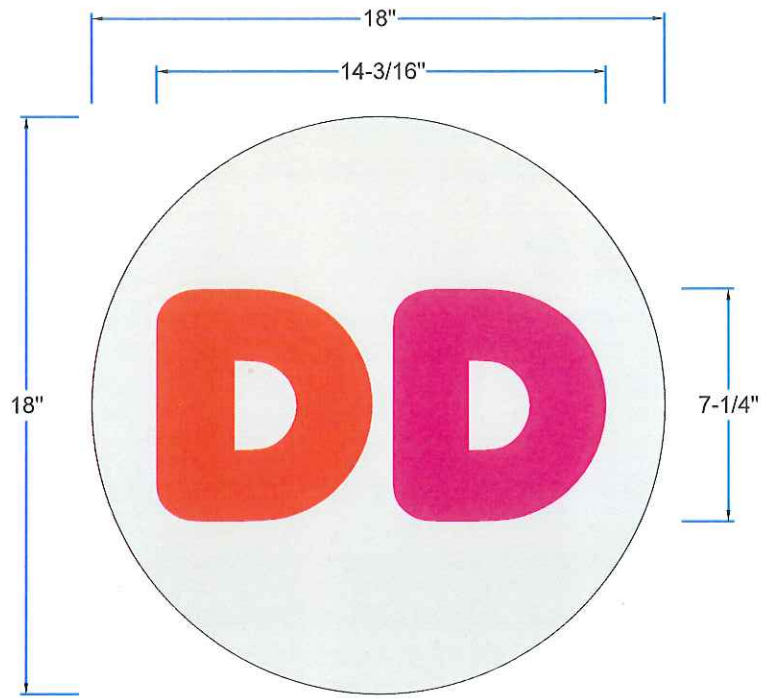


ViewPoint
SIGN AND AWNING

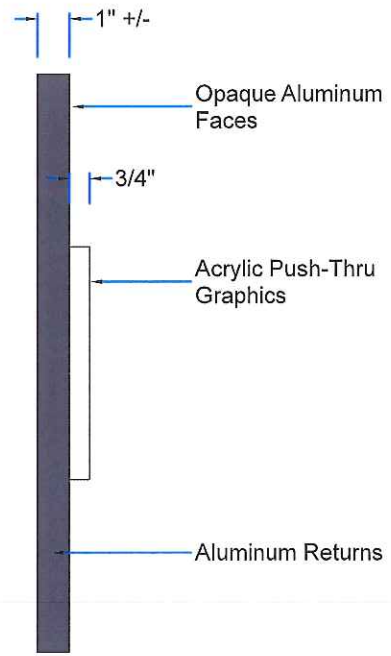
1.508.393.8200

FAX 1.508.393.4244

Customer Approval Acct. Manager Approval Production Approval



E1 Elevation: (Qty: 2) #9878 Replacement Blade Sign Faces



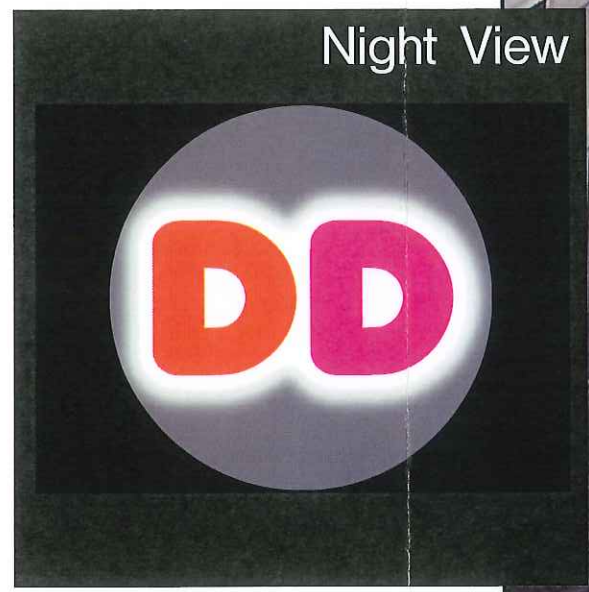
S1 Side View

Description:
 (Qty: 2) Replacement faces for existing blade sign.
 * Painted aluminum faces & returns
 * Push-thru 3/4" Acrylic graphics with translucent vinyl on faces (illuminating) and White trans back-ups
 * Faces installed onto existing refurbished/repainted blade sign

Typeface/Logo:
 * New NextGen Art on File

Colors:
 * Faces - Painted Cool Gray PMS 1c
 * Returns - Painted Dark Gray PMS 7540c (BM Raccoon Fur 2126-10)
 * Sign Body - Painted Dark Gray PMS 7540c (BM Raccoon Fur 2126-10)
 * 3/4" Acrylic - Clear
 * Vinyl Graphics - DD Orange trans 3M 3630-3123
 - DD Magenta trans 3M 3630-1379
 - White trans Oracal #010 (back-ups)

Installation:
 * By ViewPoint



PE Photo Elevation Views: Proposed & Existing

Job: Dunkin' Donuts	Account Manager: Sean Donovan	Date: 09.17.18 D1.25	Revisions:	Revisions:	ViewPoint SIGN AND AWNING 1.508.393.8200 FAX 1.508.393.4244	Customer Approval	Acct. Manager Approval	Production Approval
Location: 101 Summer St., Boston, MA	File: DD BosMA 101Summer blade faces 1a.plt	Designer: Pete Rivera						

THIS PROPOSAL DRAWING CONTAINS ORIGINAL ELEMENTS CREATED BY VIEWPOINT SIGN AND AWNING. ALL RIGHTS RESERVED. UNAUTHORIZED DUPLICATION OR REPRODUCTION IS PROHIBITED.