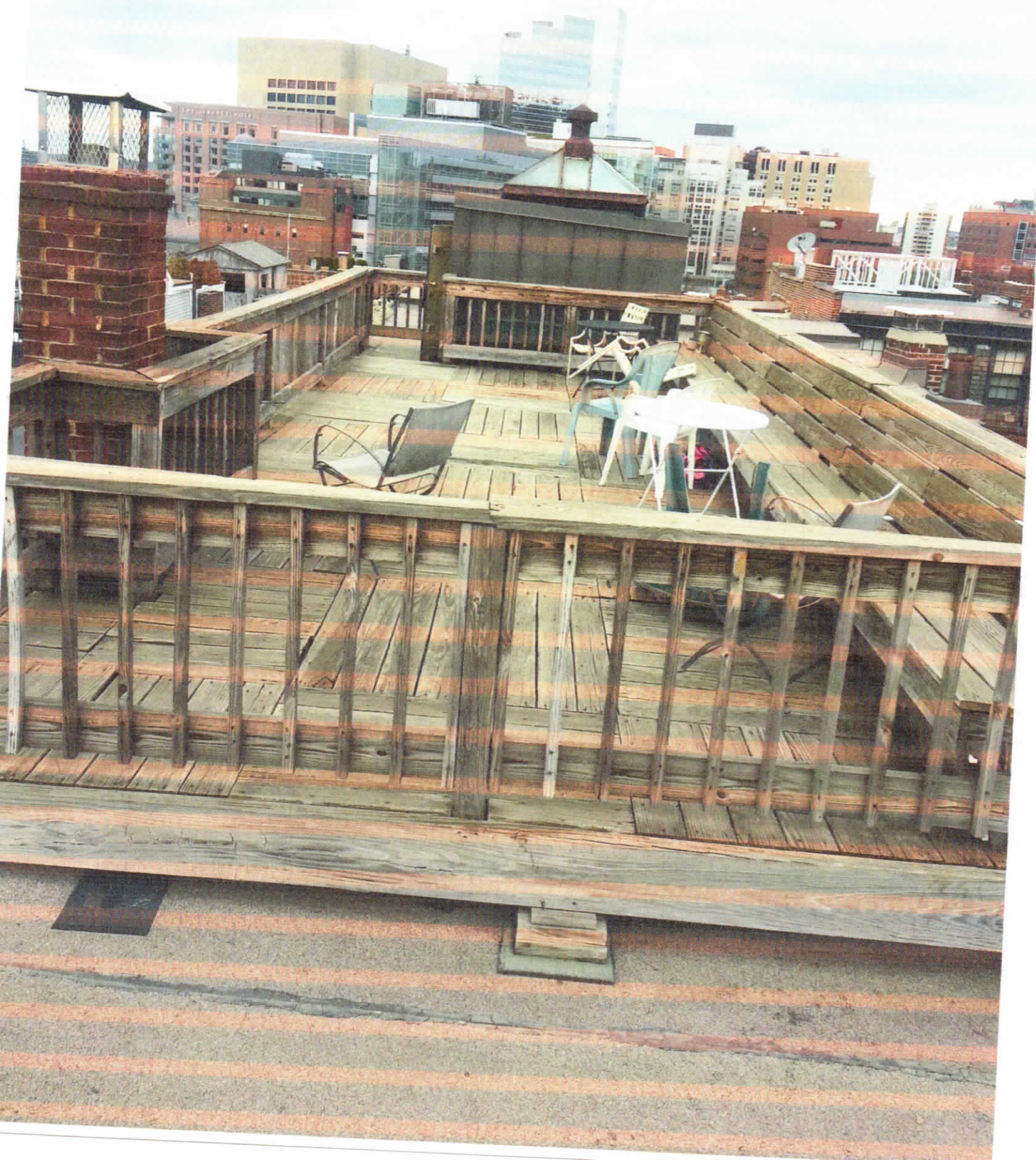








• OLD DECK



← BENCH TO BE REMOVED

NEW DECK

→ METAL RAILINGS TO BE INSTALLED PERIMETER OF DECK



· MYRTLE ST facing north



• MYRTLE ST facing south



• REVERE ST. FACING ~~SOUTH~~
NORTH

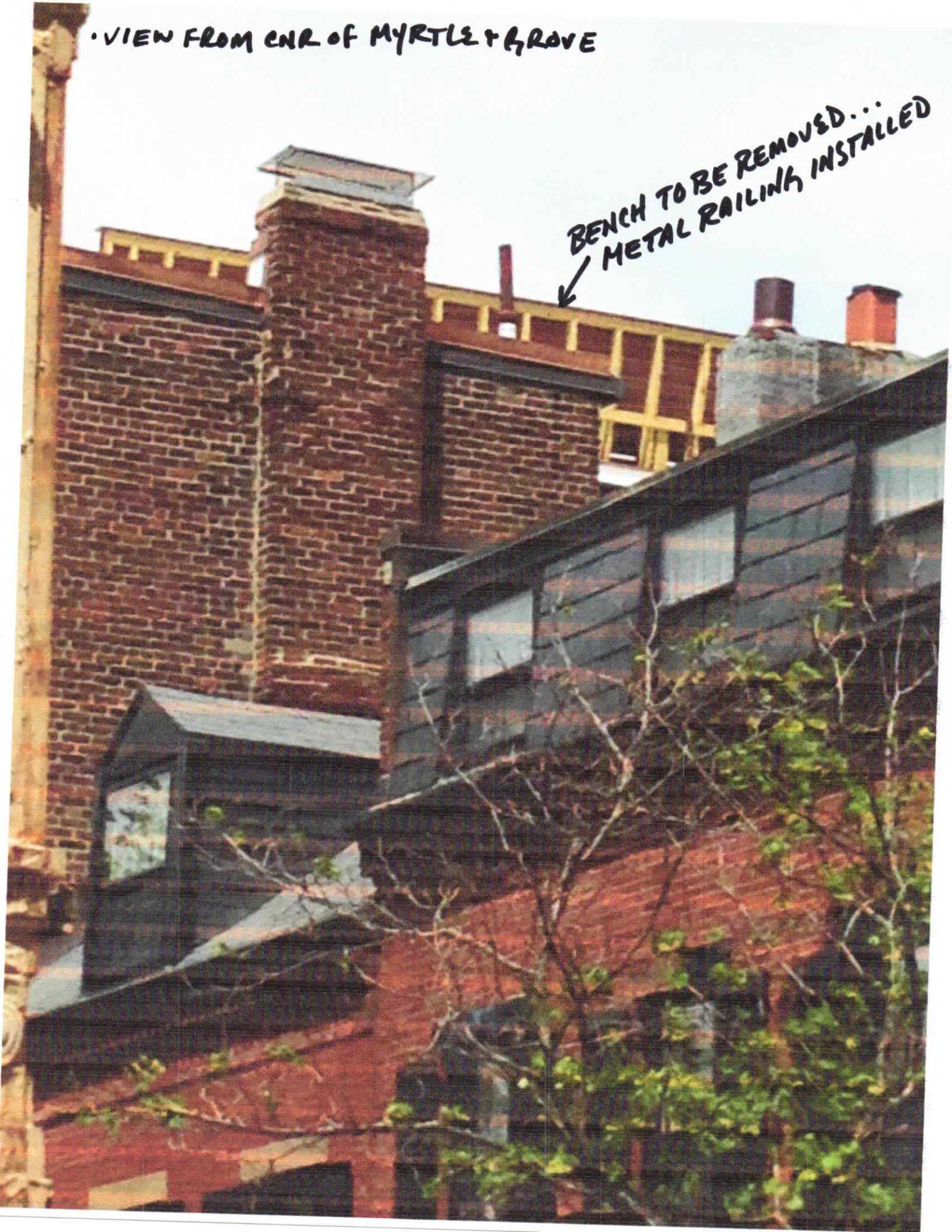


· REVERE ST. FACING SOUTH



• VIEW FROM CORNER OF MYRTLE GROVE

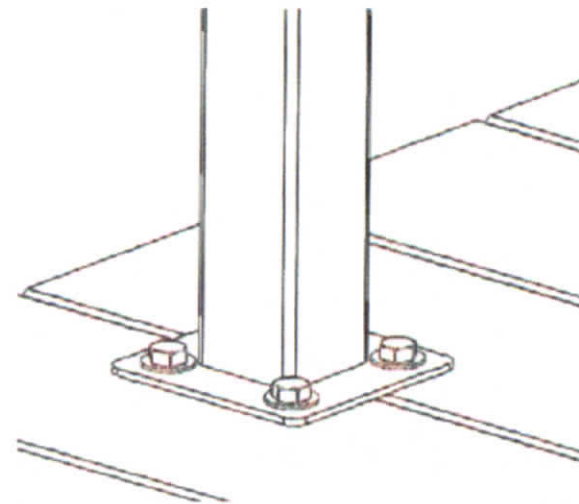
BENCH TO BE REMOVED...
METAL RAILING INSTALLED



FORTRESS RAILING PANEL SYSTEM SIMPLIFIED

Fe²⁶ | IRON RAILING

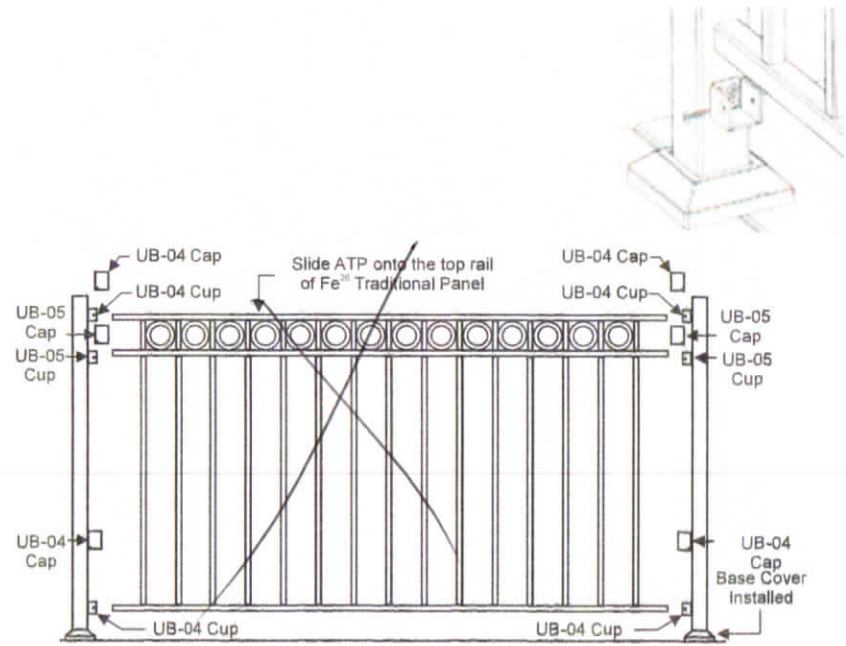
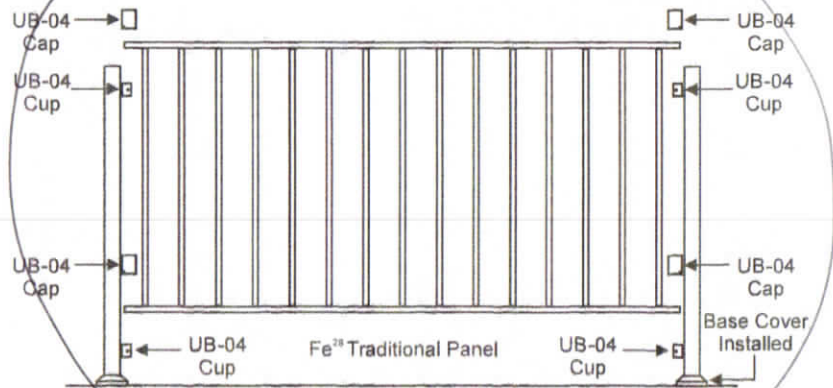
MOUNT POSTS



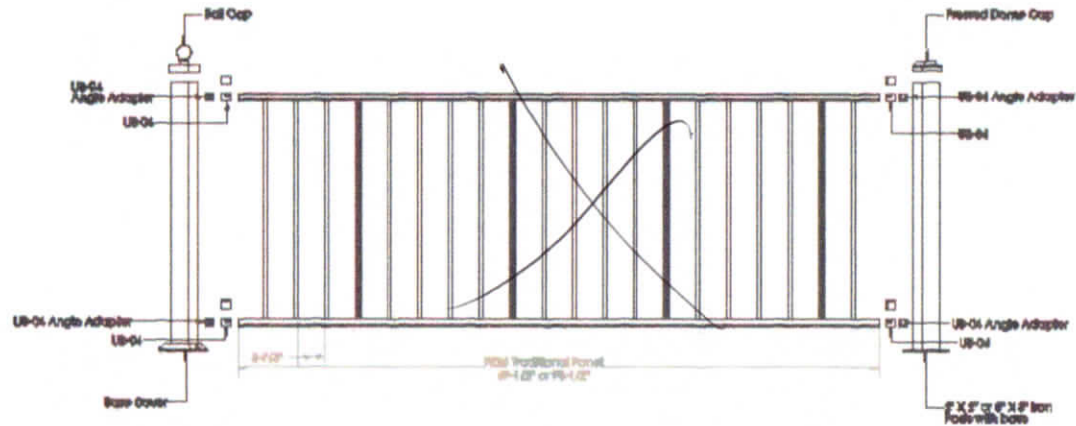
Fortress Posts must always be secured to the deck framing and should never be attached to only the deck boards.

MOUNT BRACKETS & PANELS

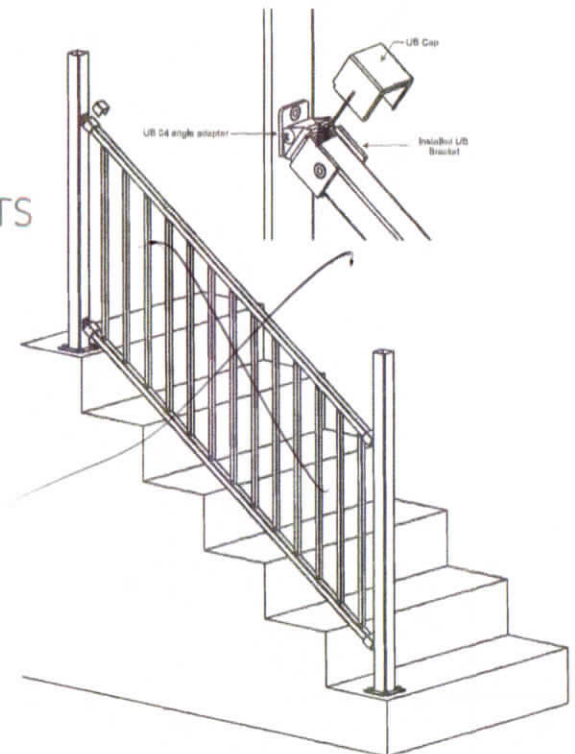
OPTION 1: UNIVERSAL BRACKETS



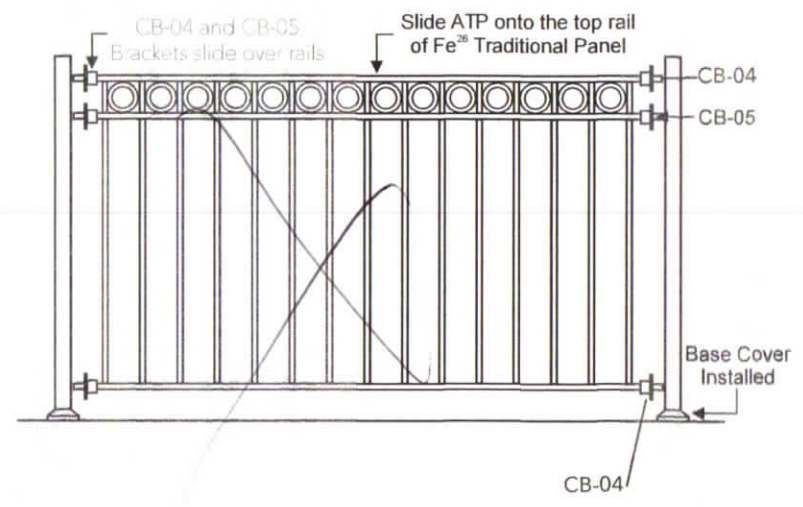
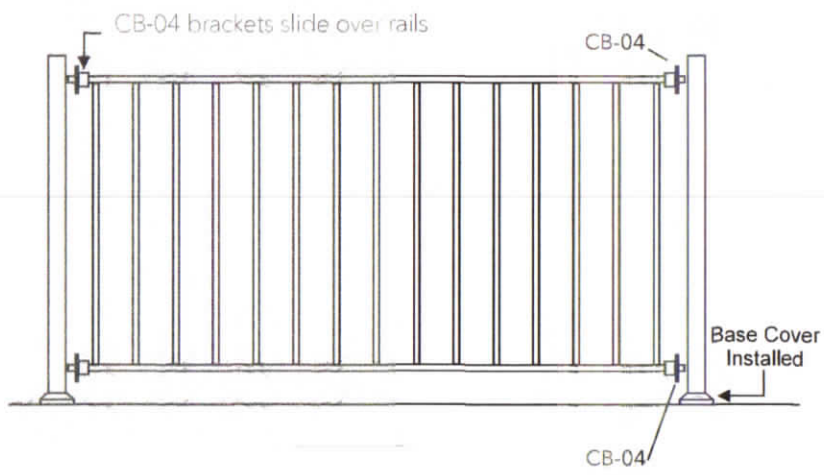
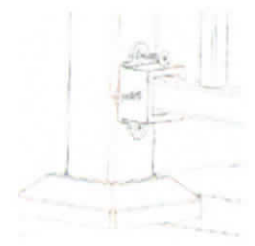
UNIVERSAL BRACKET: ANGLE/MITER



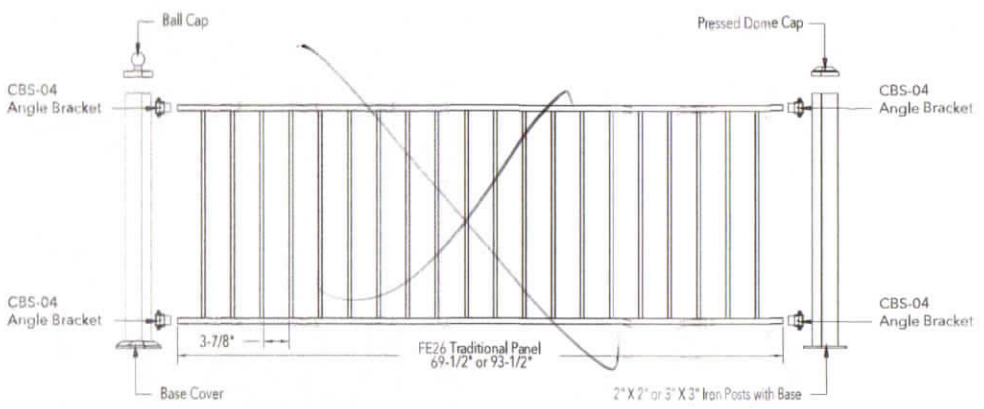
STAIR WITH UNIVERSAL BRACKETS



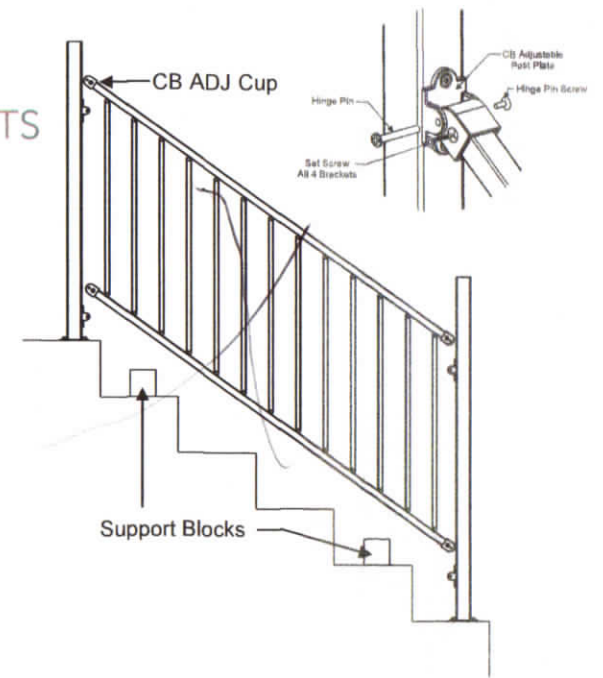
OPTION 2: COLLAR BRACKETS

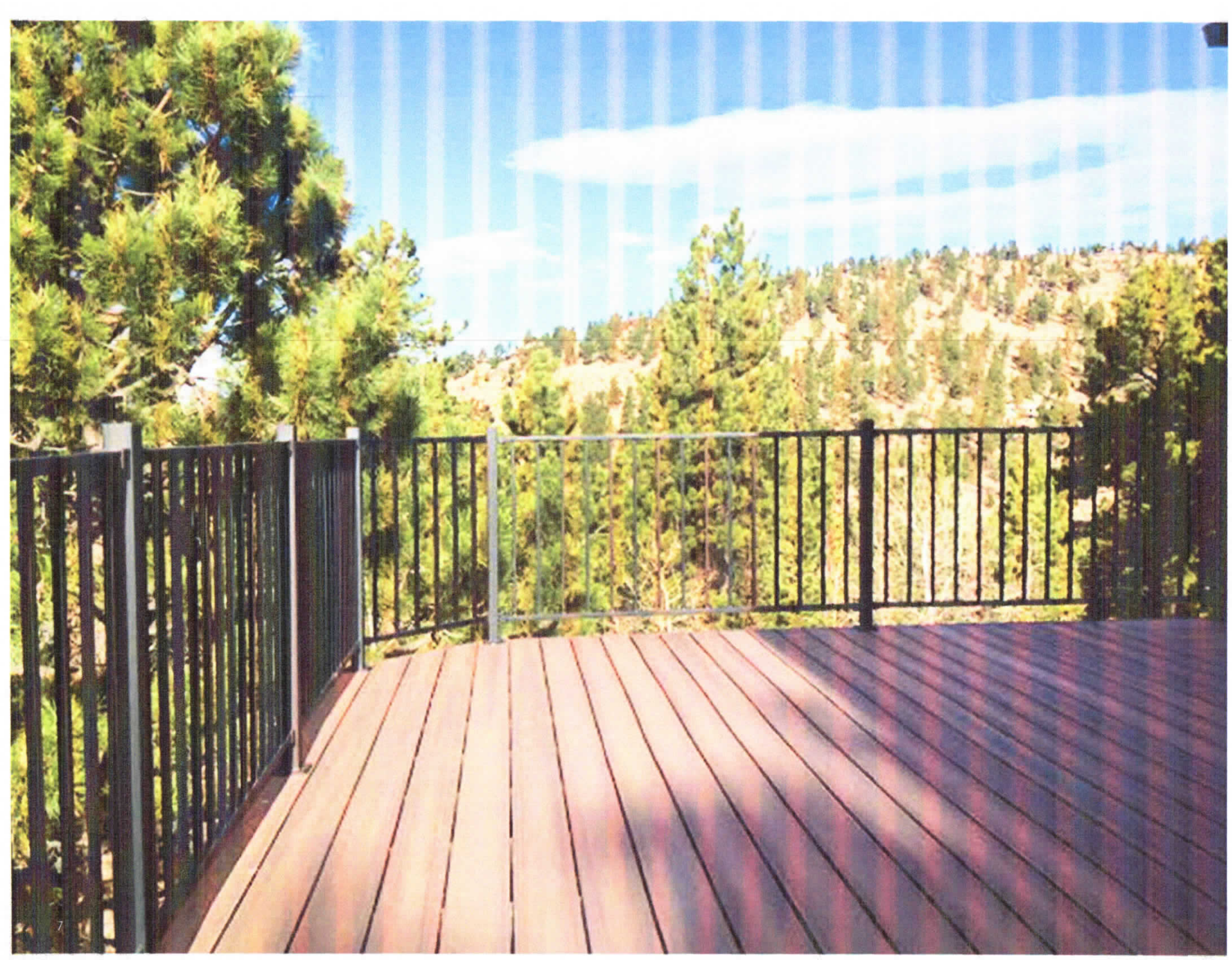


COLLAR BRACKET: ANGLE/MITER (CBS-04)



STAIR WITH COLLAR BRACKETS





FEATURES & BENEFITS

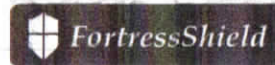
- Pre-welded Panels with Patented bracket system
- FortressShield Coated utilizing advanced automotive coating process to resist rust and corrosion
- Many customizing options to choose from
- Use with Wood, Composite, Vinyl or Fortress Iron Posts
- Quick and Easy Installation
- Fortress Fe²⁶ Panels are tested in accordance with AC273 & OBC/NBCC

PREMIUM FINISH

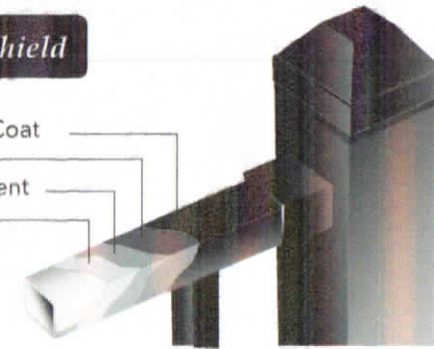
Fortress Fe²⁶ Iron Railing is available in three premium finishes engineered to withstand the elements.



Protected with



Premium Powder Coat
E-Coat
Quality Pre-treatment
Zinc Galvanized



SIMPLE ASSEMBLY
EASY AS 1, 2, 3 **FORTRESS**



FORTRESS

Fe²⁶ | IRON RAILING

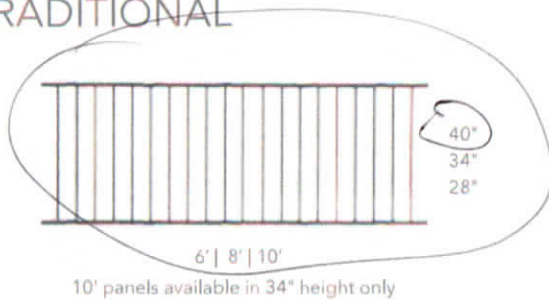
SELECTION SIMPLIFIED

| PANELS

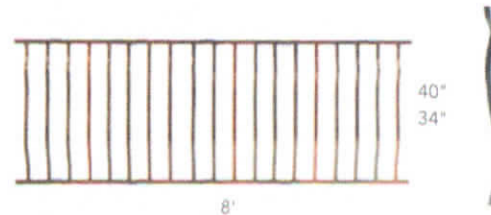
All panels can be used with several types of posts such as Metal, Wood, Vinyl or Composite

LEVEL

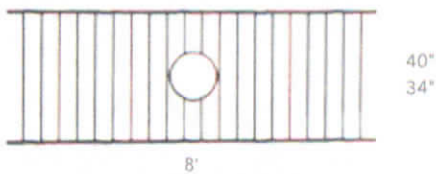
TRADITIONAL



VIENNA

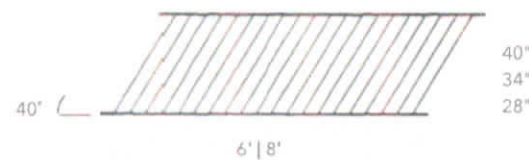


ORNAMENTAL



STAIR

TRADITIONAL ADJUSTABLE



Reference the Fortress Railing Product Grid on page 65 for exact dimensions



I-Support
(Panel support optional)



2 | POSTS & BRACKETS

POSTS

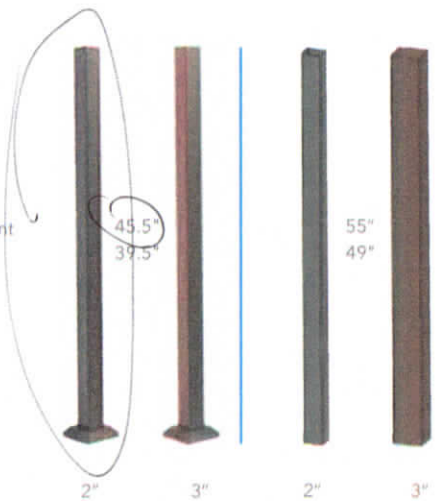
All post base plates are pre-drilled enabling ease of wiring for lighting installations

45.5" | 55"

(Goes with 38" Railing panel or 34" Rail panel when using Accent Top Panels)

39.5" | 49"

(Goes with 34" Railing panel and with 28" Rail panel when using Accent Top Panel)



(Post Base Cover included in Post Box with 39.5" and 45.5" Posts")

Base Cover not Required

BRACKETS

UNIVERSAL BRACKET Hidden Fasteners (Patented)



UB
(Level)



UB-ANG
(Add to Universal Bracket for Stair or Angle/Miter Application)

COLLAR BRACKET Traditional Fasteners



CB
(Level)



CBS-ADJ
(Angle/Miter)



CB-ADJ
(Stair)

PATIO BRACKET



Patio Bracket Standard
(Level)



Patio Bracket ADJ
(Stair or Angle/Miter Applications)

(For on-grade 30° or less above ground)

FASCIA MOUNT BRACKET



STRAIGHT
BRACKET

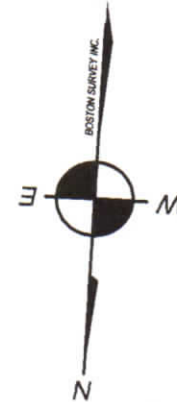
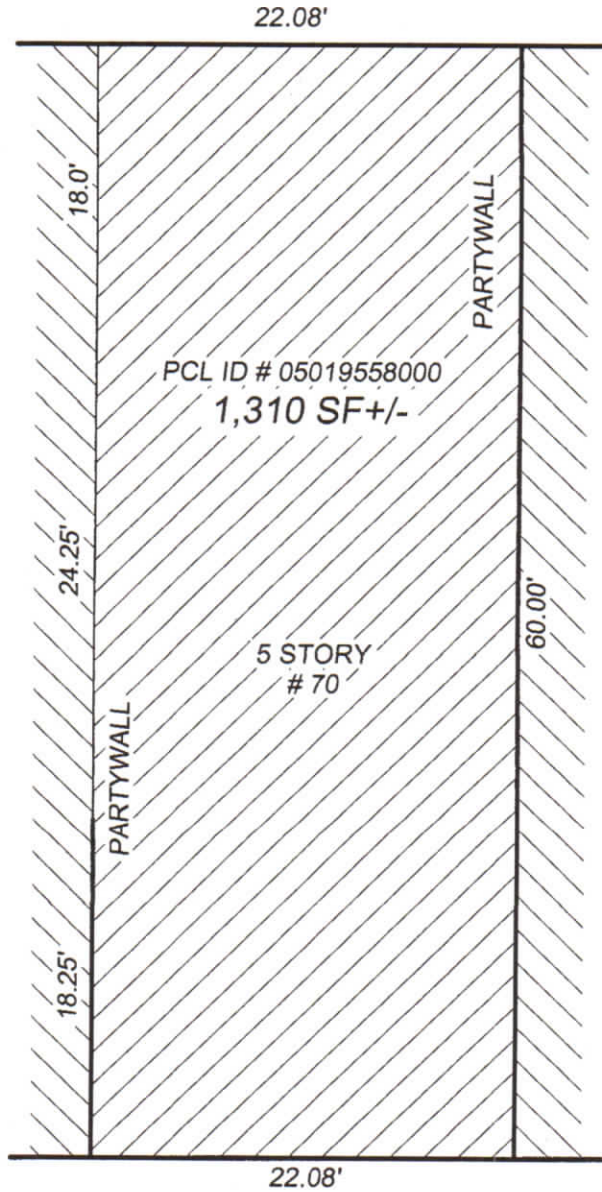


INSIDE CORNER
BRACKET



OUTSIDE CORNER
BRACKET

MYRTLE STREET



REVERE STREET

FLOOD DETERMINATION

According to Federal Emergency Management Agency maps, the major improvements on this property fall in an area designated as

ZONE: **X**
COMMUNITY PANEL No **25D25C00716**
EFFECTIVE DATE: **9-25-2009**

REFERENCES

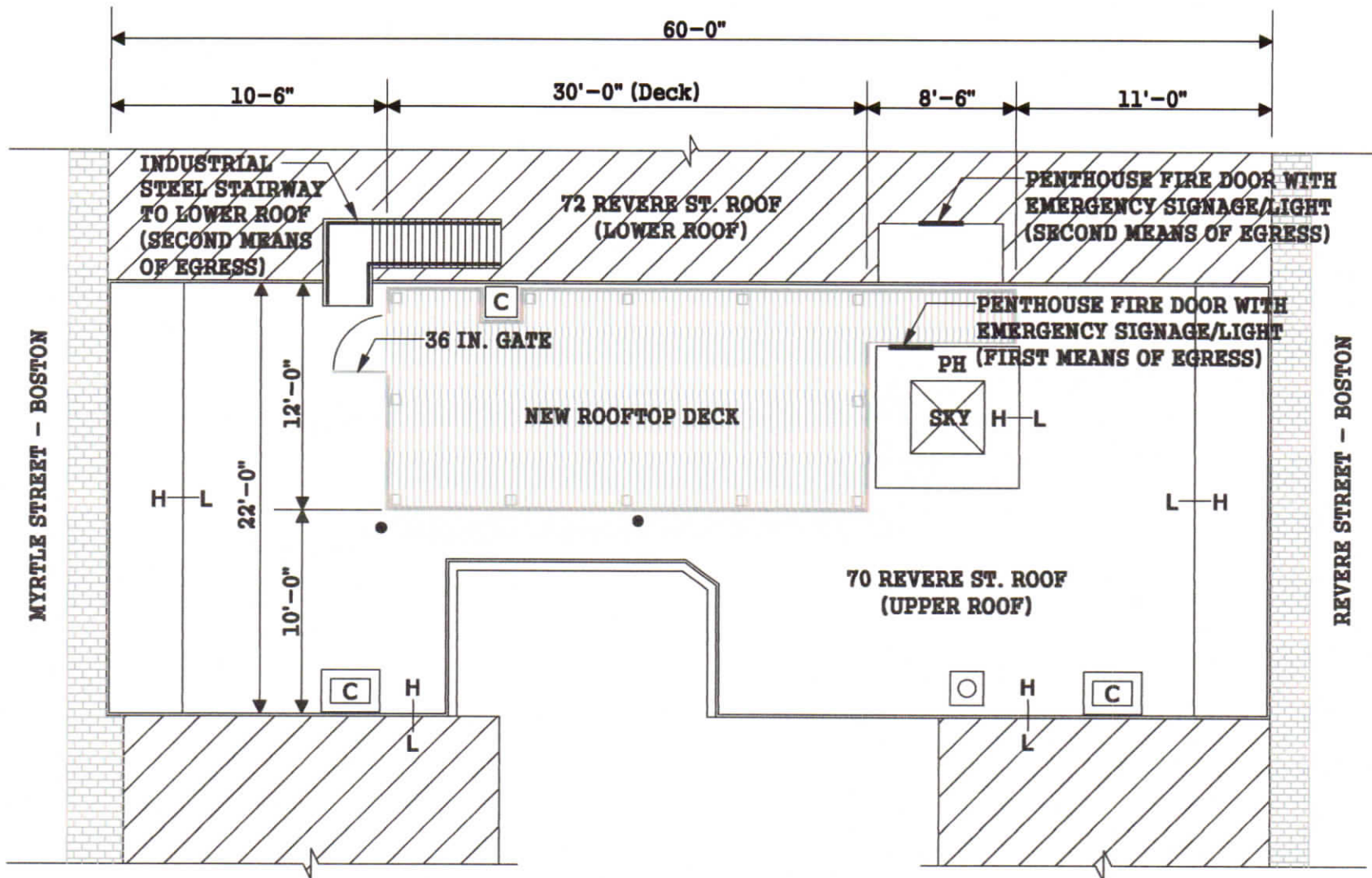
DEED / REF: 9960-309
PLAN REF: ASSESSORS

NOTE: To show an accurate scale this plan must be printed on legal sized paper (8.5" x 14")

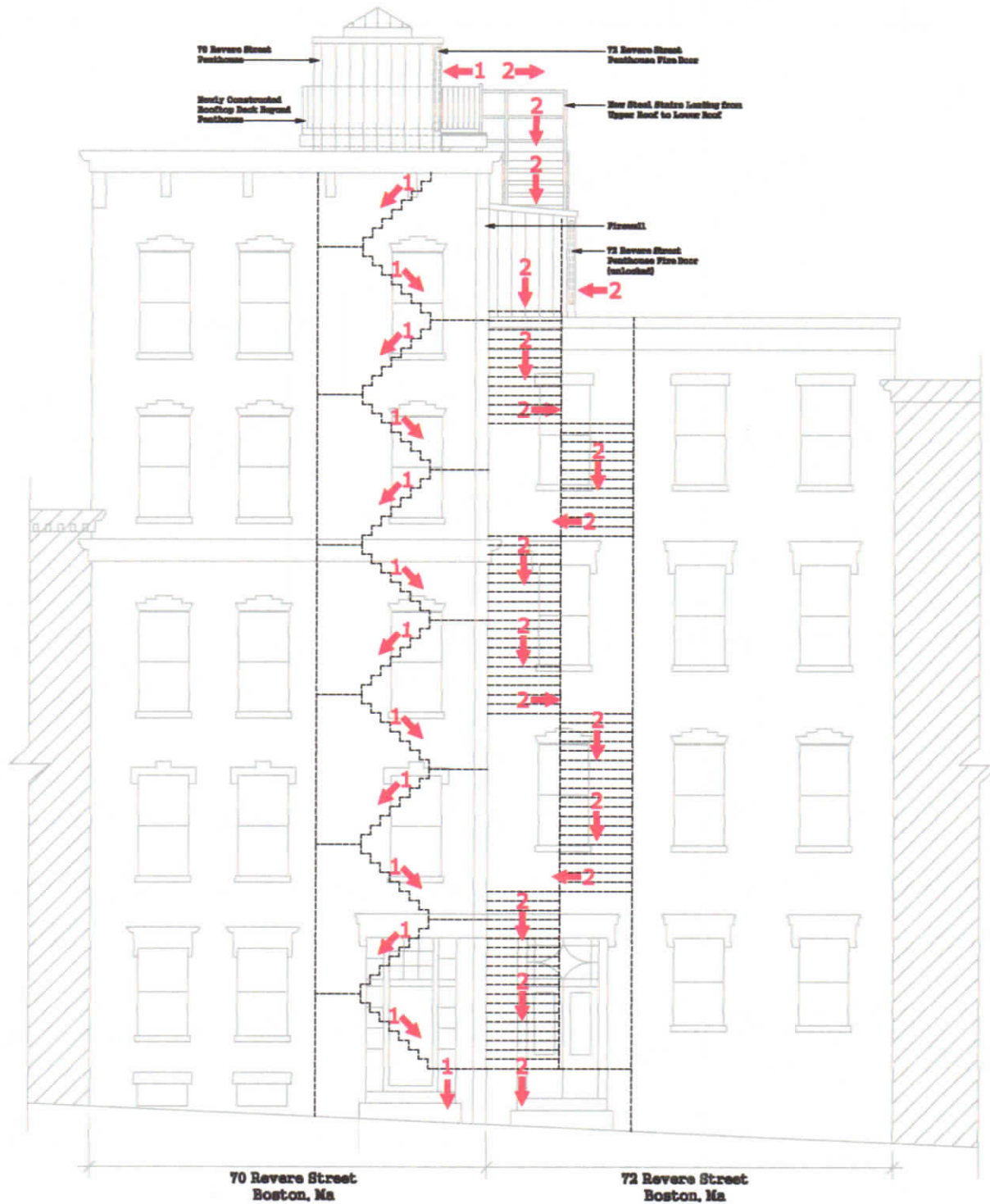


The permanent structures are approximately located on the ground as shown. They either conformed to the setback requirements of the local zoning ordinances in effect at the time of construction, or are exempt from violation enforcement action under

Exhibit "A"



Roof Plan



Elevation Plan

