

24 SELKIRK ROAD

BRIGHTON, MA 02135

ABERDEEN ARCHITECTURAL CONSERVATION DISTRICT COMMISSION
DESIGN REVIEW SUBMISSION

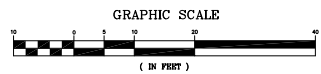
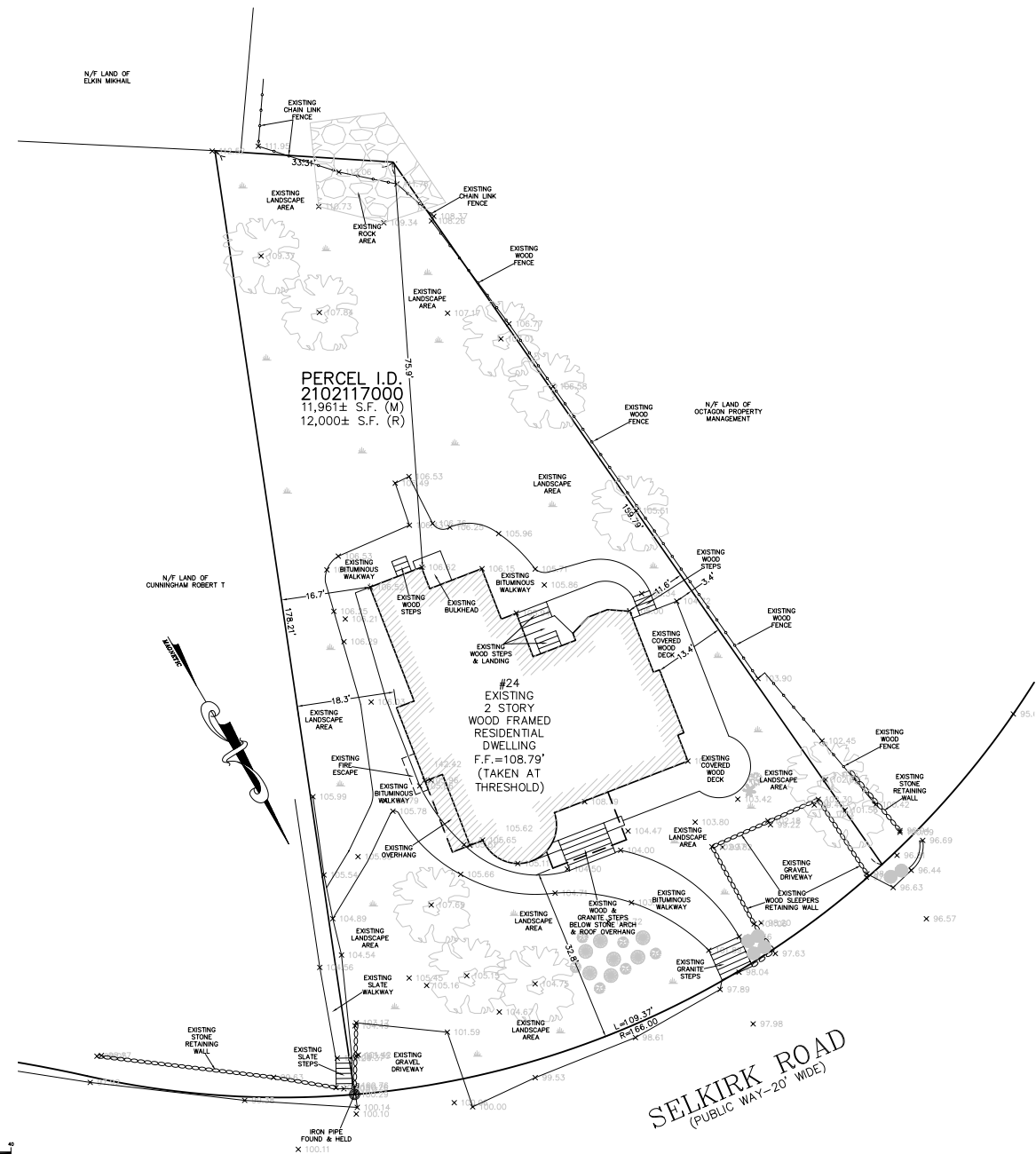
December 06, 2018



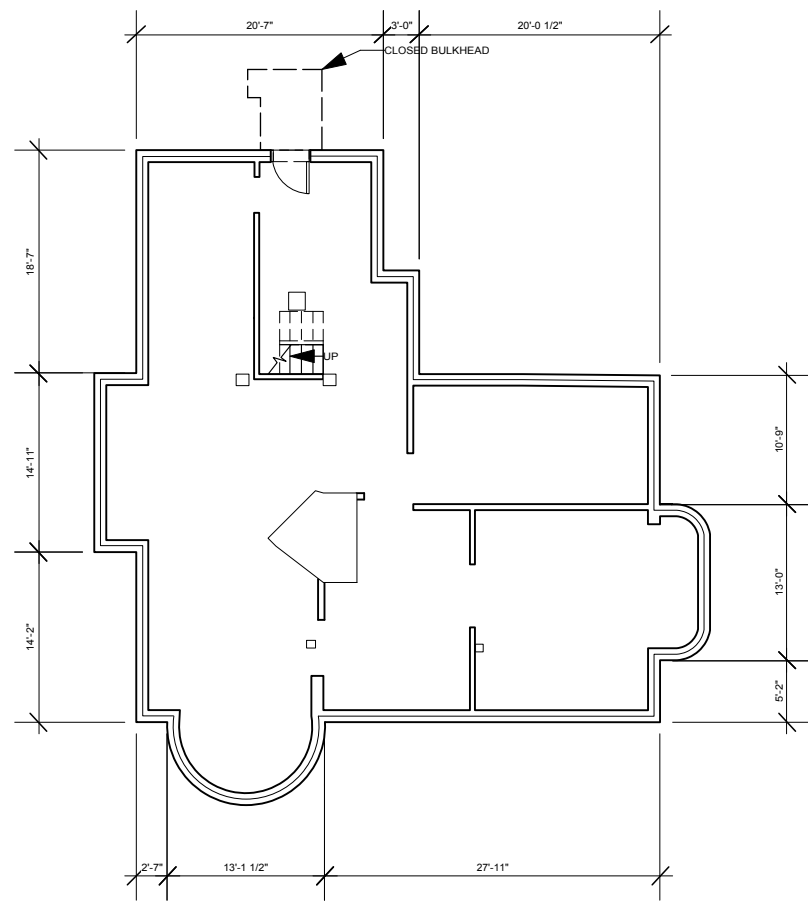




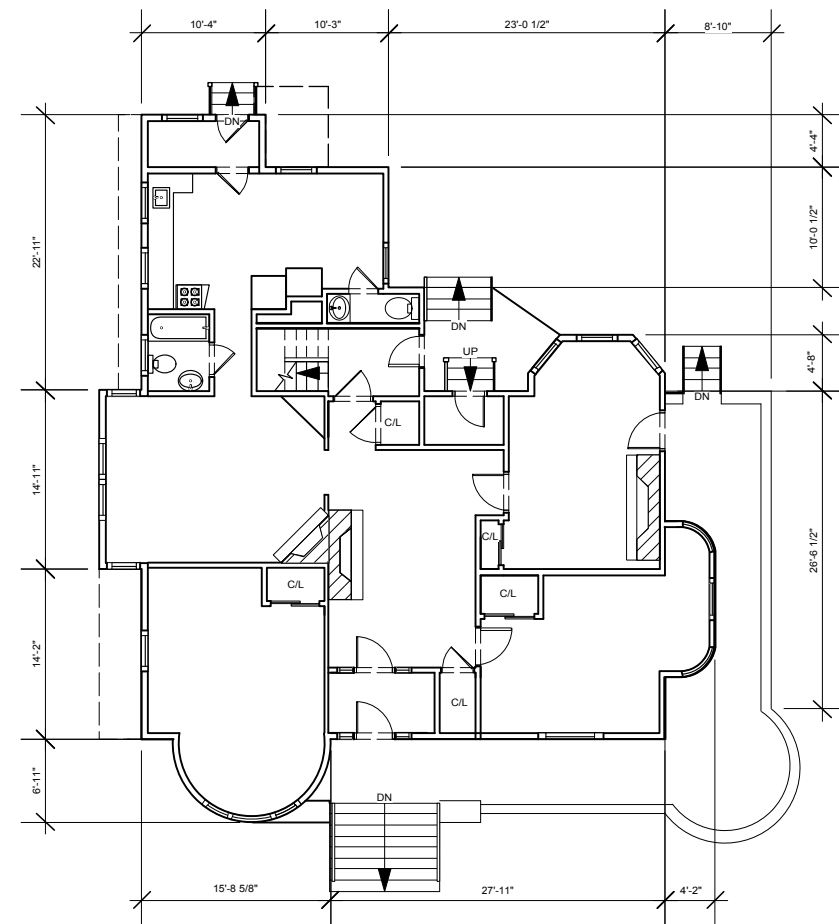








BASEMENT PLAN



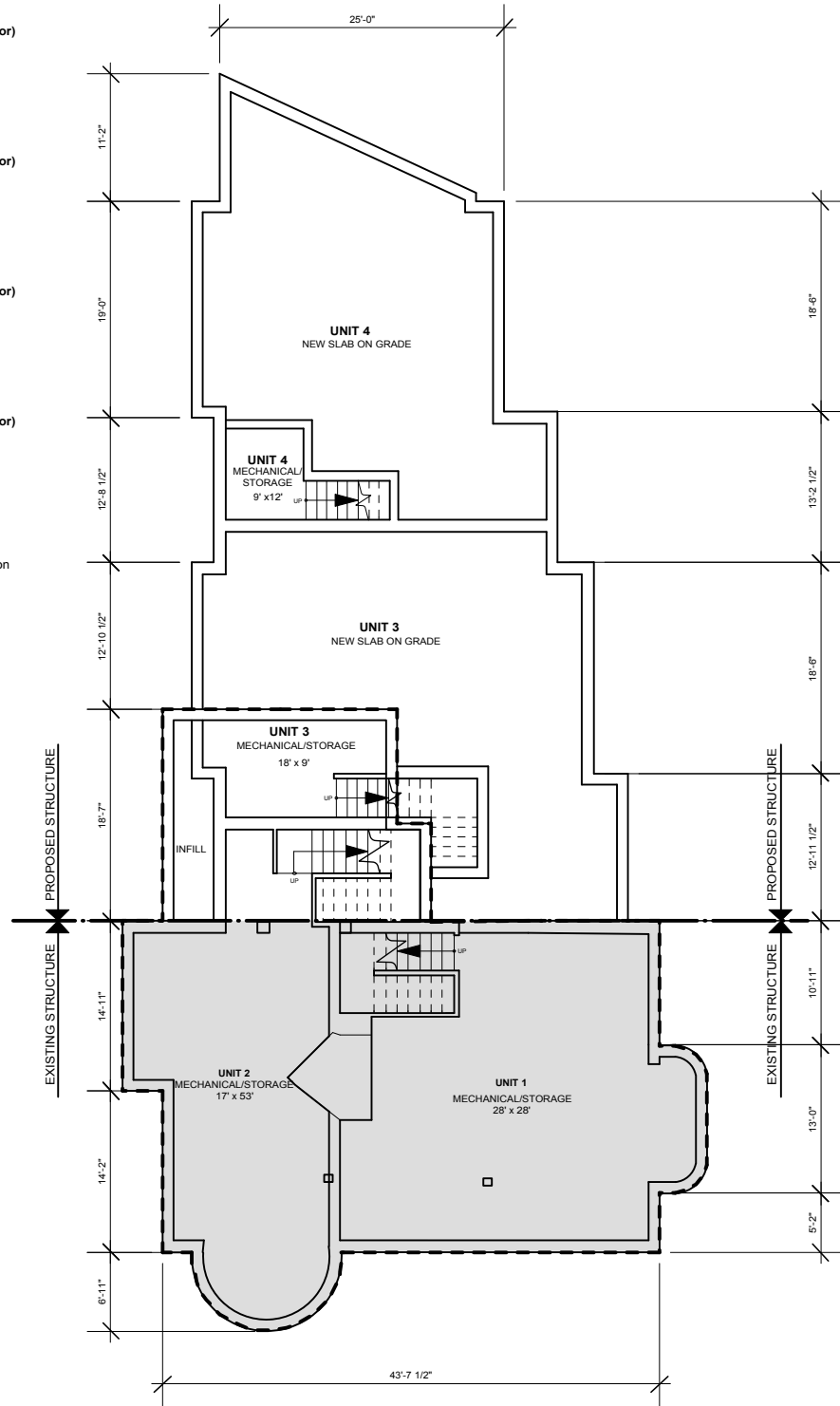
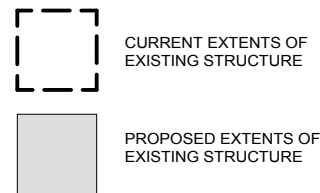
FIRST FLOOR PLAN

SQUARE FOOTAGE SUMMARY

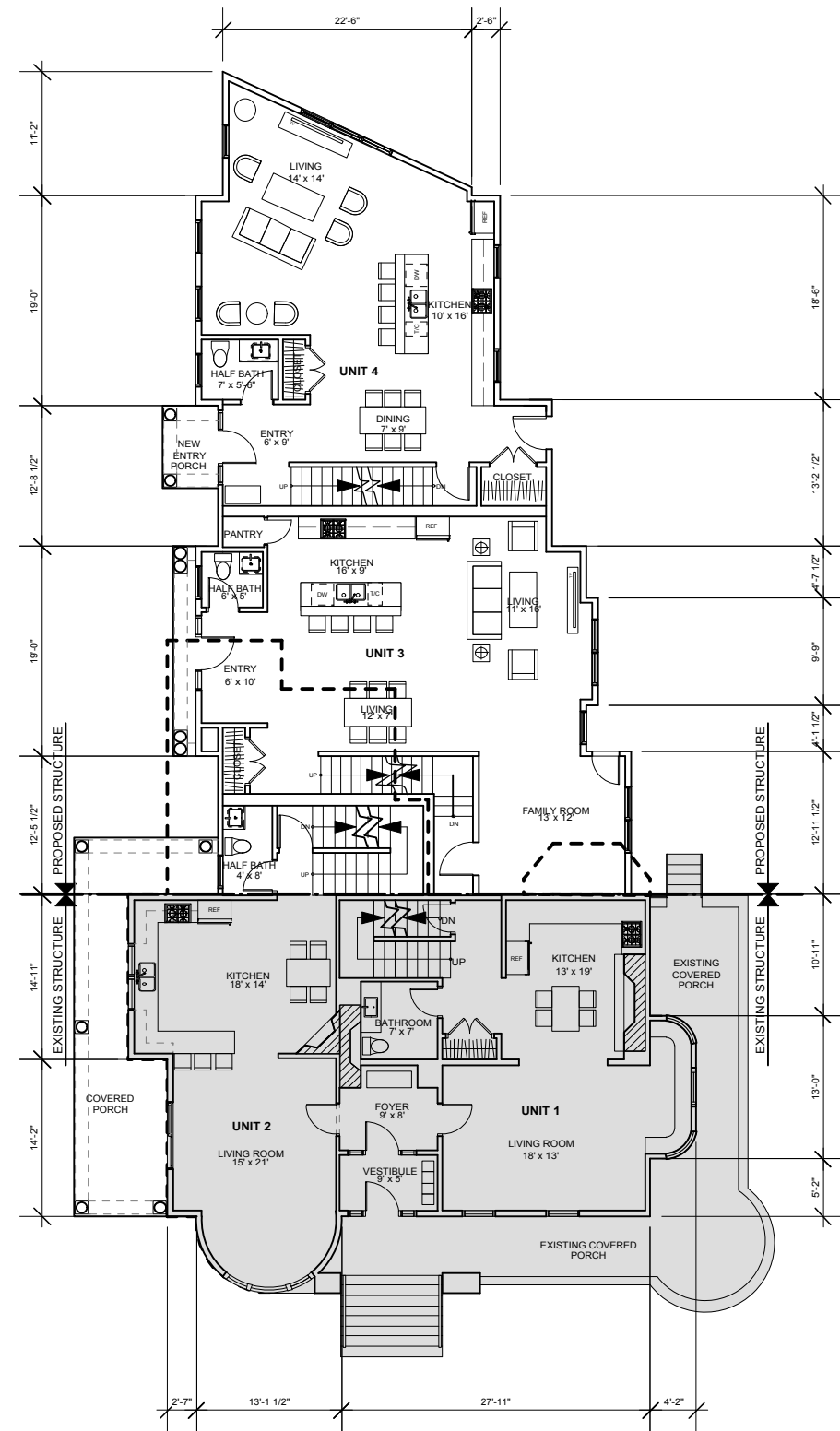
FLOOR	TOTAL
UNIT 1	
FIRST FLOOR	654 sf
SECOND FLOOR	533 sf
THIRD FLOOR	652 sf
UNIT 1 GROSS TOTAL	1,839 sf (Excludes Basement Floor)
UNIT 1 BASEMENT FLOOR	
	805 sf (Mechanical/Storage)
UNIT 2	
FIRST FLOOR	673 sf
SECOND FLOOR	991 sf
THIRD FLOOR	487 sf
UNIT 2 TOTAL	2,151 sf (Excludes Basement Floor)
UNIT 2 BASEMENT FLOOR	
	612 SF (Mechanical/Storage)
UNIT 3	
FIRST FLOOR	1082 sf
SECOND FLOOR	1050 sf
THIRD FLOOR	711 sf
UNIT 3 TOTAL	2,843 sf (Excludes Basement Floor)
UNIT 3 BASEMENT FLOOR	
	165 SF (Mechanical/Storage)
UNIT 4	
FIRST FLOOR	879 sf
SECOND FLOOR	871 sf
THIRD FLOOR	647 sf
UNIT 4 TOTAL	2,397 sf (Excludes Basement Floor)
UNIT 4 BASEMENT FLOOR	
	109 SF (Mechanical/Storage)
GROSS FLOOR AREA	9,230 sf
LOT SIZE	12,000± sf
F.A.R.	0.769

*Gross floor area excludes basements and mechanical space as per Boston Zoning Code Article 2A - definitions for floor area ratio and floor area, gross.

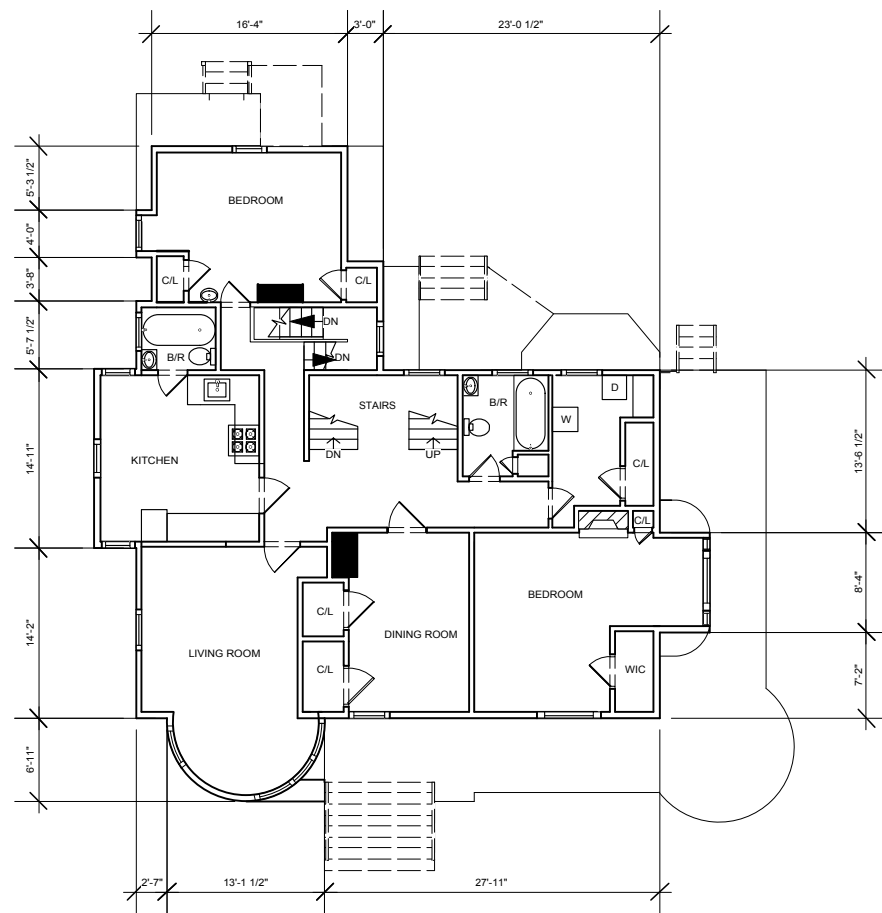
KEY:



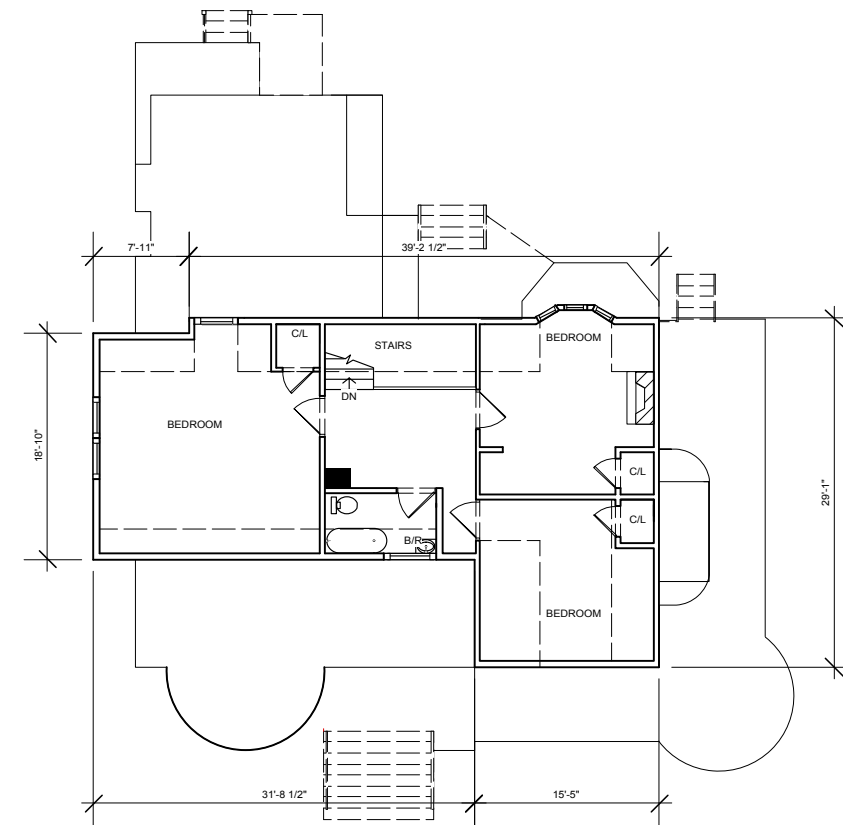
BASEMENT PLAN



FIRST FLOOR PLAN



SECOND FLOOR PLAN



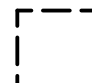

THIRD FLOOR PLAN

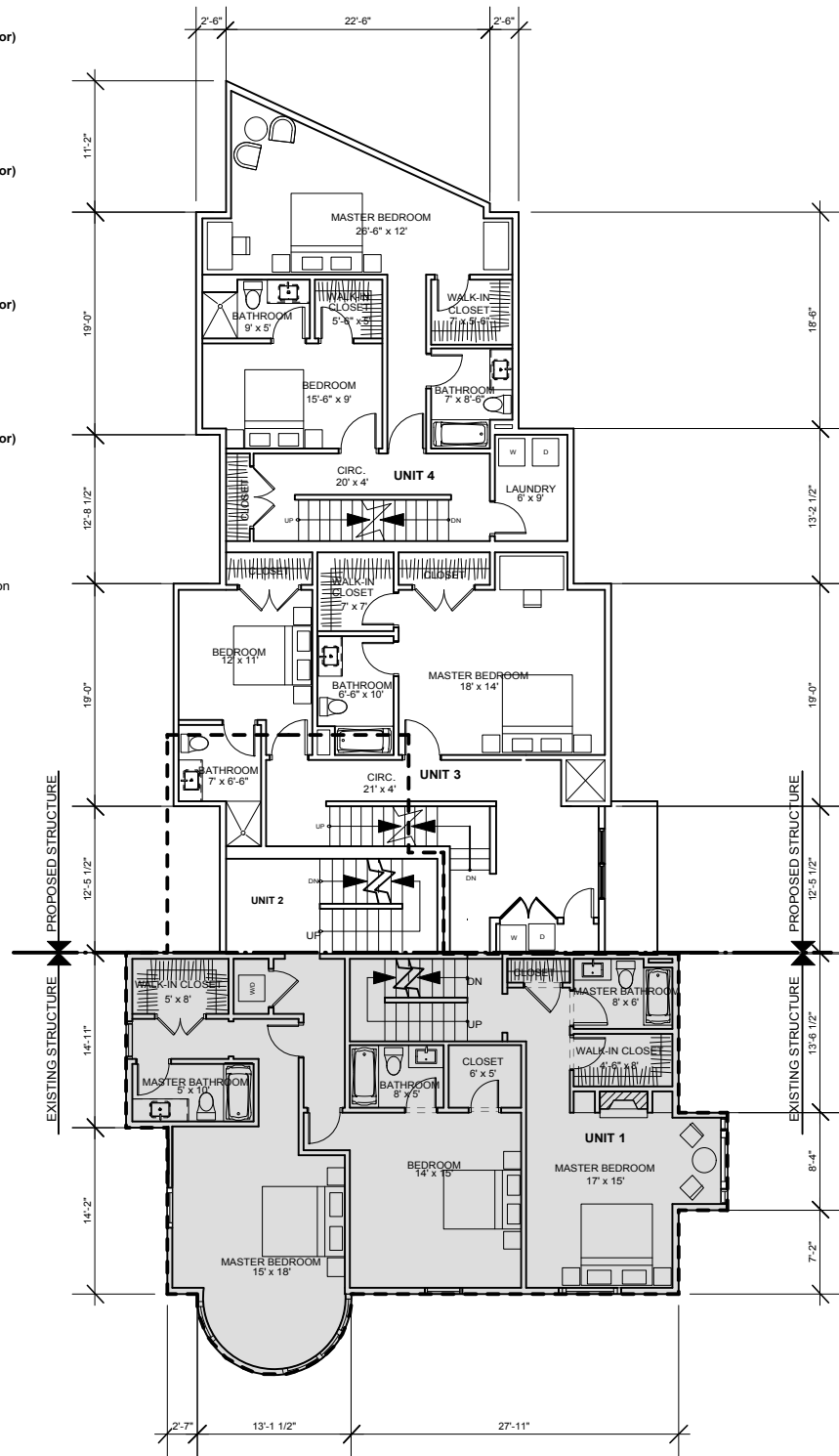
SQUARE FOOTAGE SUMMARY

FLOOR	TOTAL
UNIT 1	
FIRST FLOOR	654 sf
SECOND FLOOR	533 sf
THIRD FLOOR	652 sf
UNIT 1 GROSS TOTAL	1,839 sf (Excludes Basement Floor)
UNIT 1 BASEMENT FLOOR	805 sf (Mechanical/Storage)
UNIT 2	
FIRST FLOOR	673 sf
SECOND FLOOR	991 sf
THIRD FLOOR	487 sf
UNIT 2 TOTAL	2,151 sf (Excludes Basement Floor)
UNIT 2 BASEMENT FLOOR	612 SF (Mechanical/Storage)
UNIT 3	
FIRST FLOOR	1082 sf
SECOND FLOOR	1050 sf
THIRD FLOOR	711 sf
UNIT 3 TOTAL	2,843 sf (Excludes Basement Floor)
UNIT 3 BASEMENT FLOOR	165 SF (Mechanical/Storage)
UNIT 4	
FIRST FLOOR	879 sf
SECOND FLOOR	871 sf
THIRD FLOOR	647 sf
UNIT 4 TOTAL	2,397 sf (Excludes Basement Floor)
UNIT 4 BASEMENT FLOOR	109 SF (Mechanical/Storage)
GROSS FLOOR AREA	9,230 sf
LOT SIZE	12,000± sf
F.A.R.	0.769

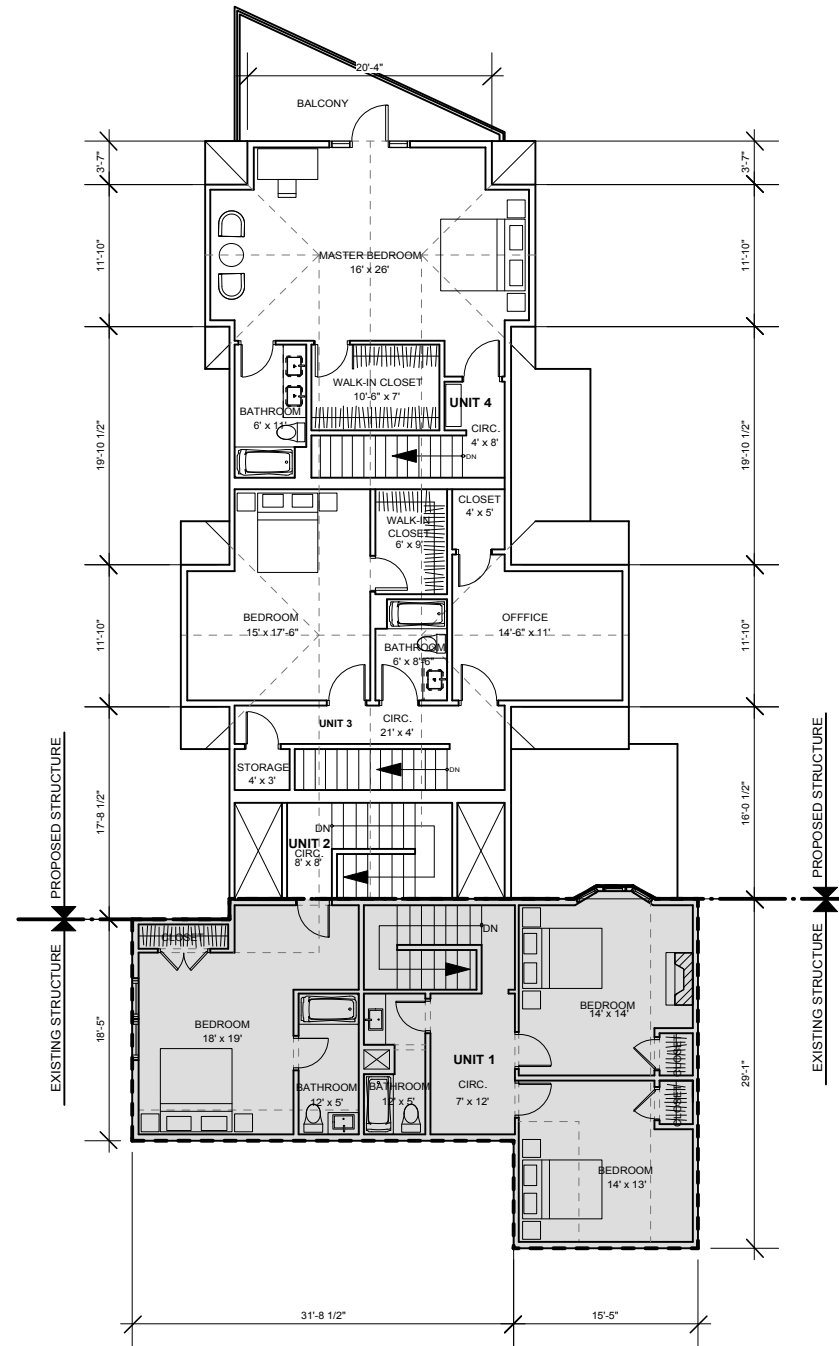
*Gross floor area excludes basements and mechanical space as per Boston Zoning Code Article 2A - definitions for floor area ratio and floor area, gross.

KEY:

-  CURRENT EXTENTS OF EXISTING STRUCTURE
-  PROPOSED EXTENTS OF EXISTING STRUCTURE

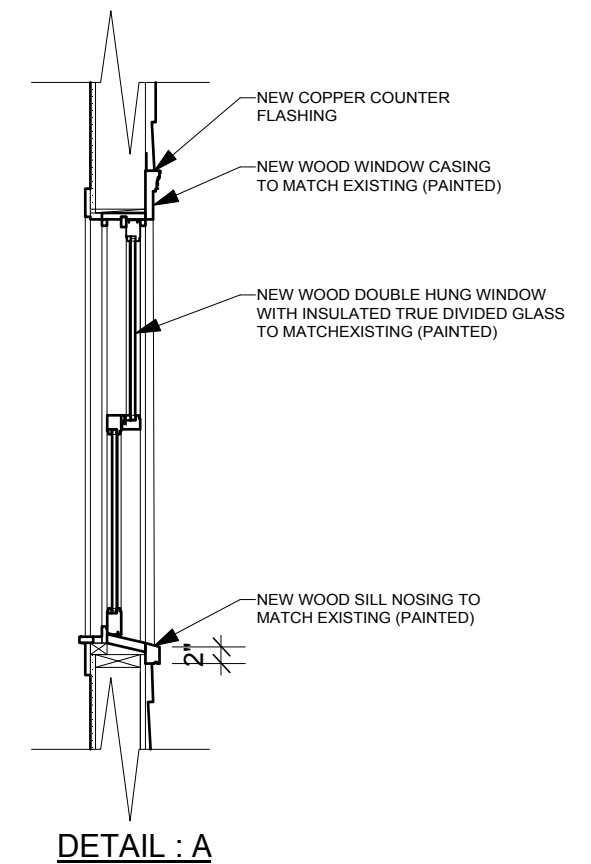


SECOND FLOOR PLAN

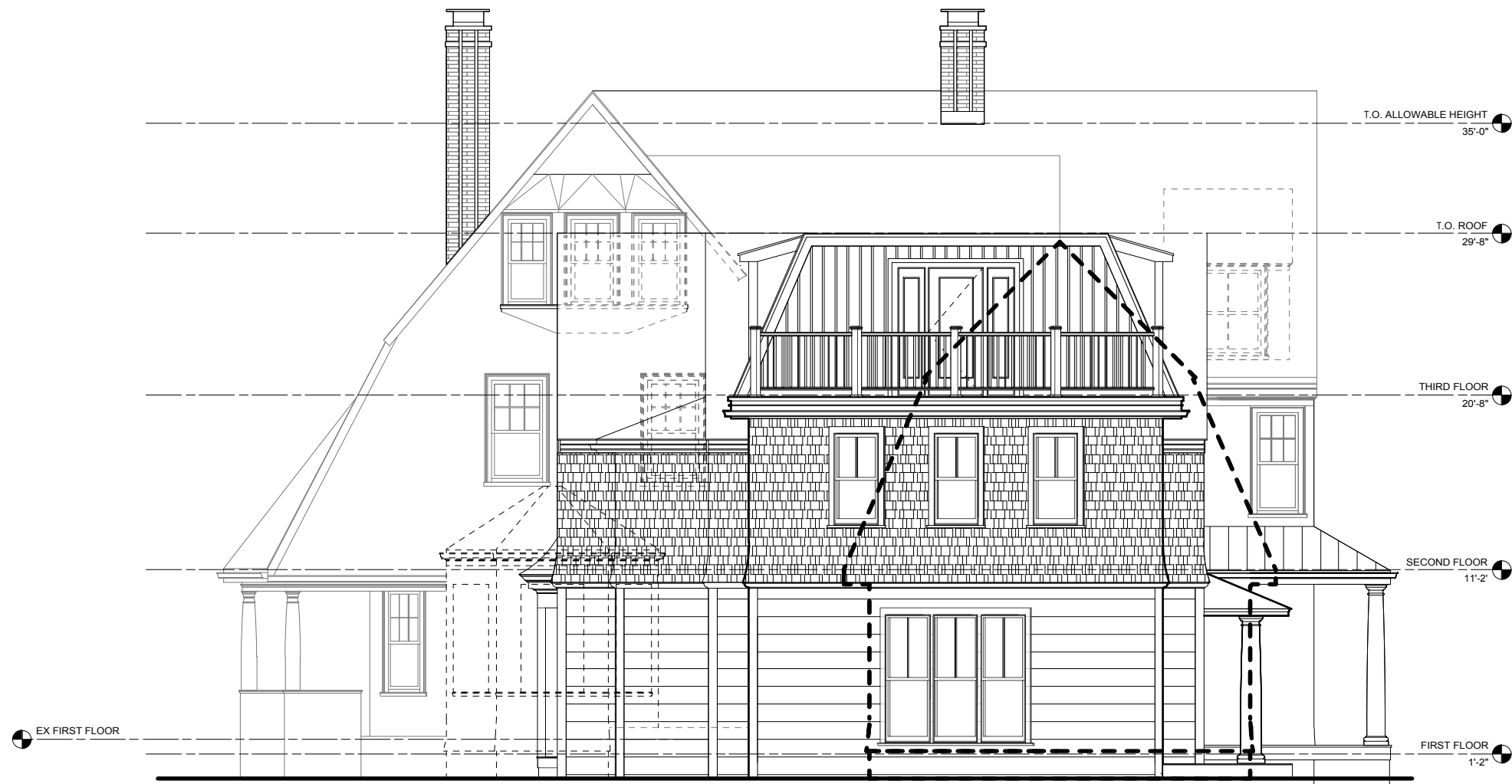


THIRD FLOOR PLAN





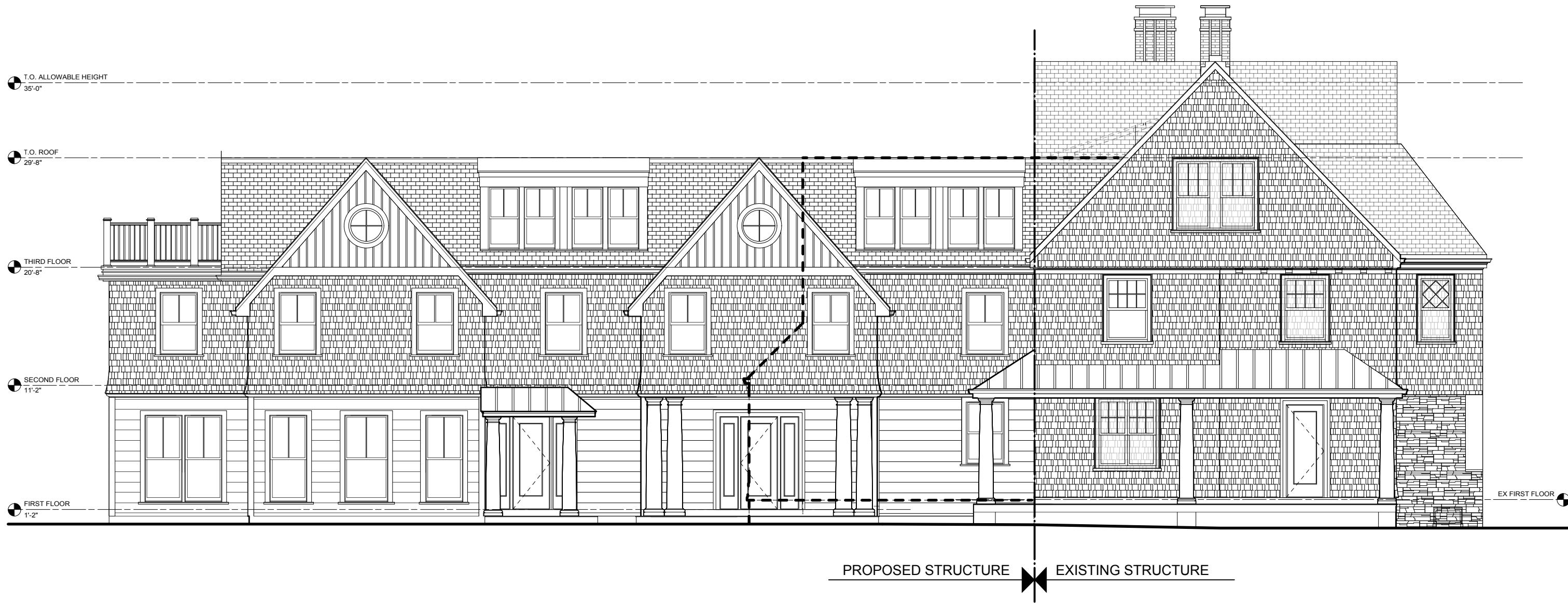




















© COPYRIGHT 2018, SOUSA DESIGN ARCHITECTS INC.











© COPYRIGHT 2018. SOUSA DESIGN ARCHITECTS INC.