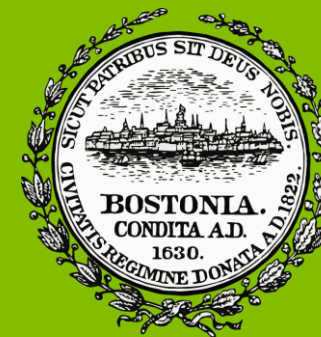


# MELNEA CASS BOULEVARD DESIGN PROJECT

**PUBLIC INFORMATION MEETING**  
December 10, 2018



CITY OF BOSTON  
Office of the Mayor  
Martin J. Walsh



**HOWARD STEIN HUDSON**  
Engineers + Planners

- “First Lady of Roxbury”
- Community Activist
- Suffragette
- Helped found the Boston Chapter of Brotherhood of Sleeping Car Porters
- President of NAACP, 1962-64
- Chair of Mass. Advisory Committee for the Elderly, 1975-76



# Public Information Meeting Agenda

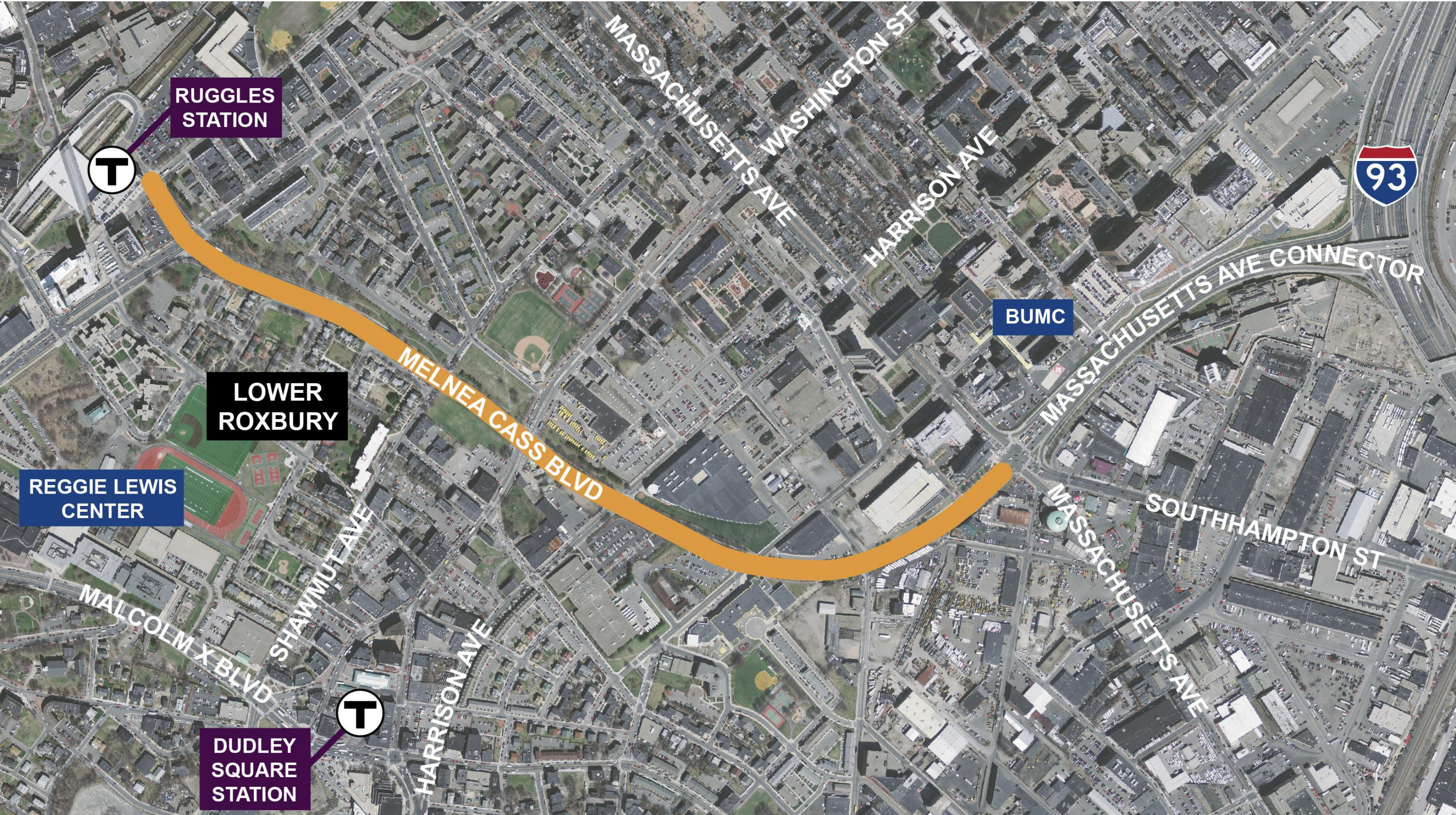


- **Project Location, Purpose, and Scope of Work**
- **Public Outreach and Project Coordination**
- **Design Elements**
- **Public Art**
- **Project Landscaping**
- **Project Milestones to FY2019 Advertisement**

- **Provide Multimodal Access and Safety Improvements**
- **Transform to a Neighborhood Street**
- **Provide a Gateway to Roxbury and the South End**
- **Balance Stakeholder Design Goals**
- **Serve Regional Traffic Demand**



# Melnea Cass Boulevard: Location



RUGGLES  
STATION



LOWER  
ROXBURY

REGGIE LEWIS  
CENTER

BUMC



DUDLEY  
SQUARE  
STATION





- **Urban Principal Arterial**
  - 4 - 5 Lane Cross Section – 2 Eastbound / 2 Westbound / Left-turn Lanes
  - Raised and at Grade Medians
- **Bike, Pedestrian, Trucking/Freight, and Public Transit Users**
- **32,000 Average Daily Traffic, >800 Pedestrians during AM Peak Hour**
- **Older Signal Equipment and Street Lighting**
- **Commercial, Residential, Community Spaces**
- **South Bay Harbor Trail**
- **Existing Trees Border Roadway and Sidewalks**

- **Improve Safety**
  - Implement Traffic Calming
  - Improve Mode Separation and Visibility
  
- **Support Equal Access for Cyclists and Pedestrians**
  - Wider and Separate Facilities and Crossings
  - Reduced Cross Section for Shorter Crossings
  
- **Support Regional Traffic**
  - Provide Geometry Needed for the Traffic Volume, Emergency Vehicles, Buses, and Heavy Vehicles

- **Invest for Climate Change and Stormwater Management Resiliency**
  - Upgrade Drainage System / Green Infrastructure
  - Raise Roadway Height
  - Plant Trees to Increase Future Canopy
  - Replace Trees in Poor Health
- **Implement Sustainable Treatments for a Maintainable Corridor**
- **Set the Stage for Economic Vibrancy**
  - Reconstruct Corridor, Upgrade Lighting, Improve Access
- **Upgrade All Traffic Signal Equipment**

# Balance Stakeholder Goals and Opportunities

- **Improve Safety and Accessibility for all Modes**
- **Improve Transit Access for Residents and Commuters**
- **Improve Walking and Cycling Connections and Make them Safer:**
  - Enhance Safety at Crossings
  - Create a Buffer between Modes
  - Provide Separated Cycling Facilities on Both Sides of the Corridor
- **Enhance the Corridor's Green Space**





# Public Outreach and Coordination

- Public Information Meetings(7)
- Engagement and Coordination meetings with Friends of Melnea Cass Boulevard (15)
- Pop Up Meetings (Ruggles Station, Tropical Foods, etc.)
- Design Public Hearing (March, 2018)
- Public Workshops(2)
  - Orchard Gardens
  - BWSC
- Abutter Engagement
- Public Site Walks (4)
- Newspaper Ads: El Planeta 11/23, Boston Globe 11/26, Baystate Banner 11/29, and South End News 11/29

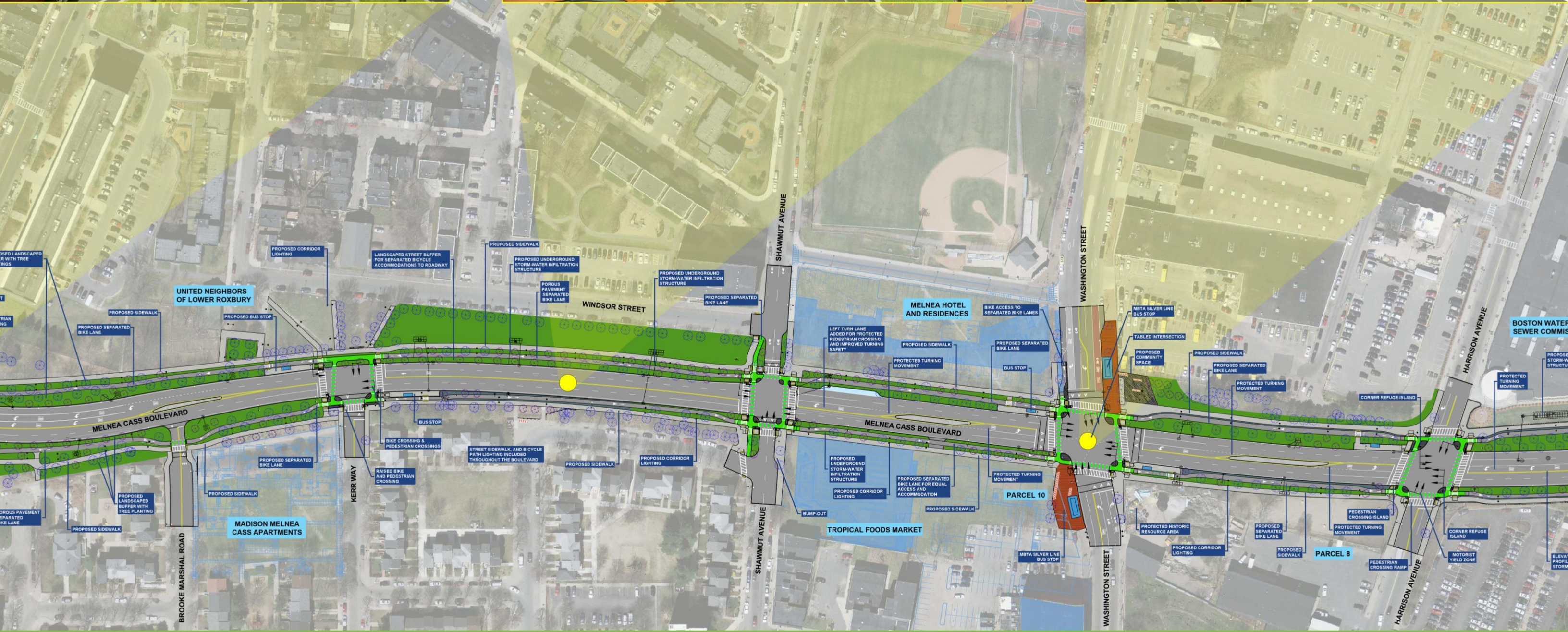
- Tobin Community Center
- Boston Gardener
- J&J Metals
- Harry Miller Company
- Herc Rentals
- Parker Hill Library
- Boston Home Shoppe
- Dipierro: Design, Build and Remodel
- BMC Family Medicine
- Wing Fook Funeral Home
- South End Library
- Haley House Café
- Best Western Plus Boston
- Dunkin' Donuts
- Boston Medical Center
- Madison Park Community Center
- First Student
- Mass ReHire Boston
- Dona Havana
- New Market Pizza and Grill
- Bruce C Boiling Building
- Boston Water and Sewer
- WCEA TV La Semena
- Enterprise
- Brigham and Woman Admin Offices
- Roxes Homes
- Orchard Garden K-8 School
- DB&S Lumber and Home
- Professional Physical Therapy
- Mandela Homes
- Tropical Foods
- Boys and Girls Club-Orchard Garden
- Cooper Community Center
- Hampton Inn
- MASCO-LMA Shuttles
- M&R Store
- Paul Revere Transportation
- Boston Body Works
- ZC Boston Asian cuisine
- Goodwill Industries



# Design Elements

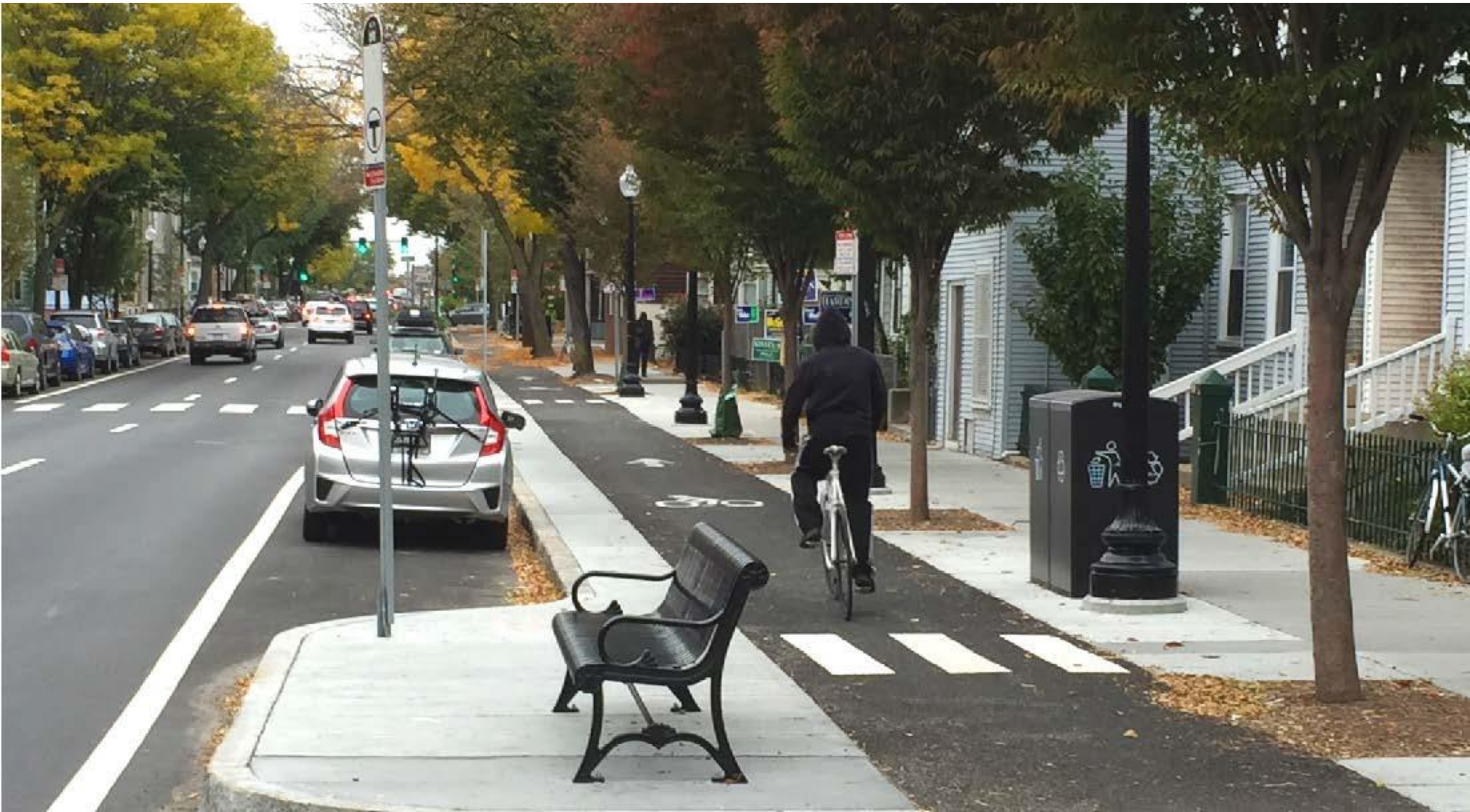


HOWARD STEIN HUDSON  
Engineers + Planners





# Design Elements: Traffic Calming, Access, and Safety





# Design Elements: Example 2



HOWARD STEIN HUDSON

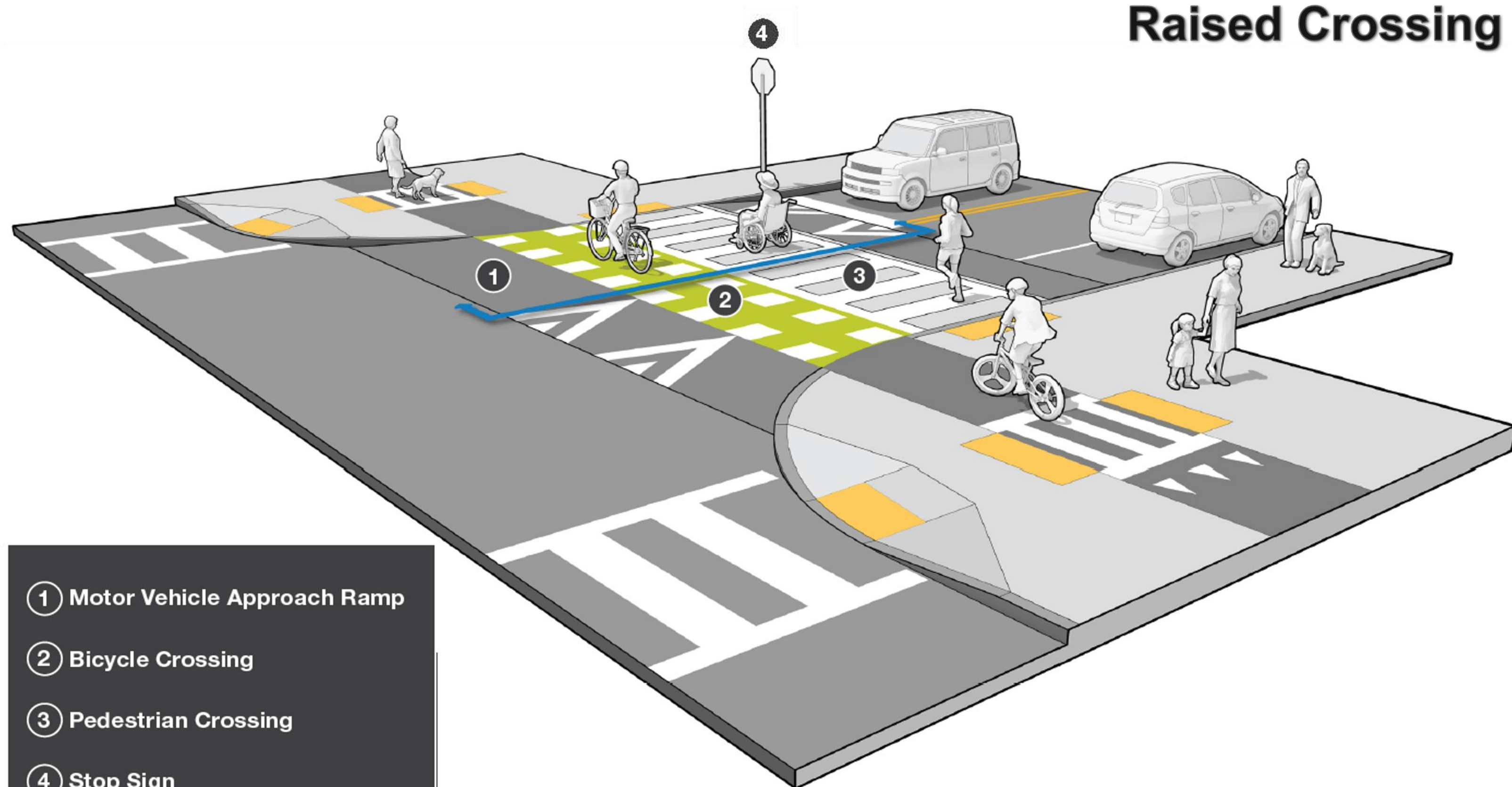
Engineers + Planners

14





## Raised Crossing



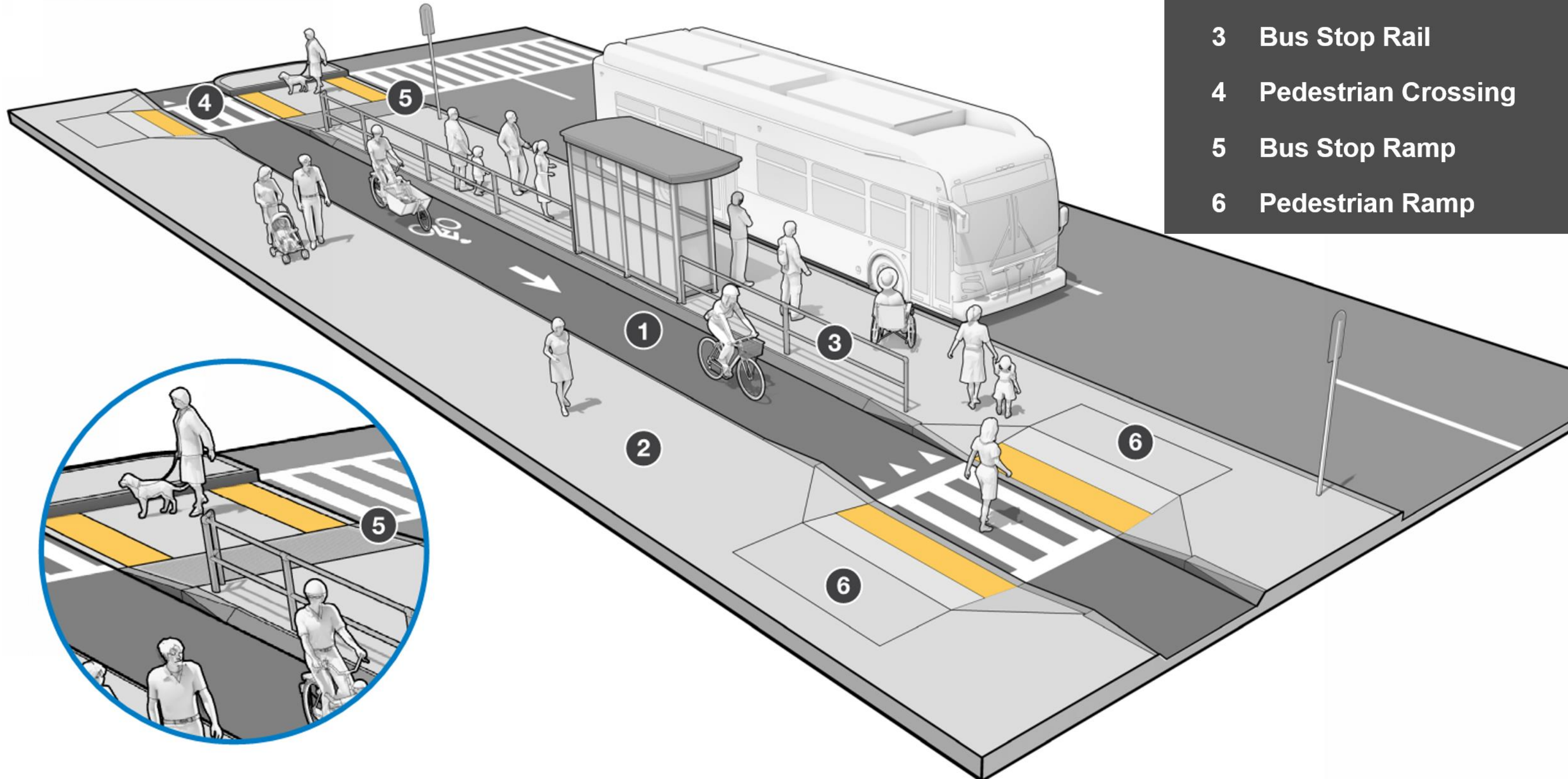
① Motor Vehicle Approach Ramp

② Bicycle Crossing

③ Pedestrian Crossing

④ Stop Sign

## Floating Bus Stop



- 1 Separated Bike Lane
- 2 Sidewalk
- 3 Bus Stop Rail
- 4 Pedestrian Crossing
- 5 Bus Stop Ramp
- 6 Pedestrian Ramp

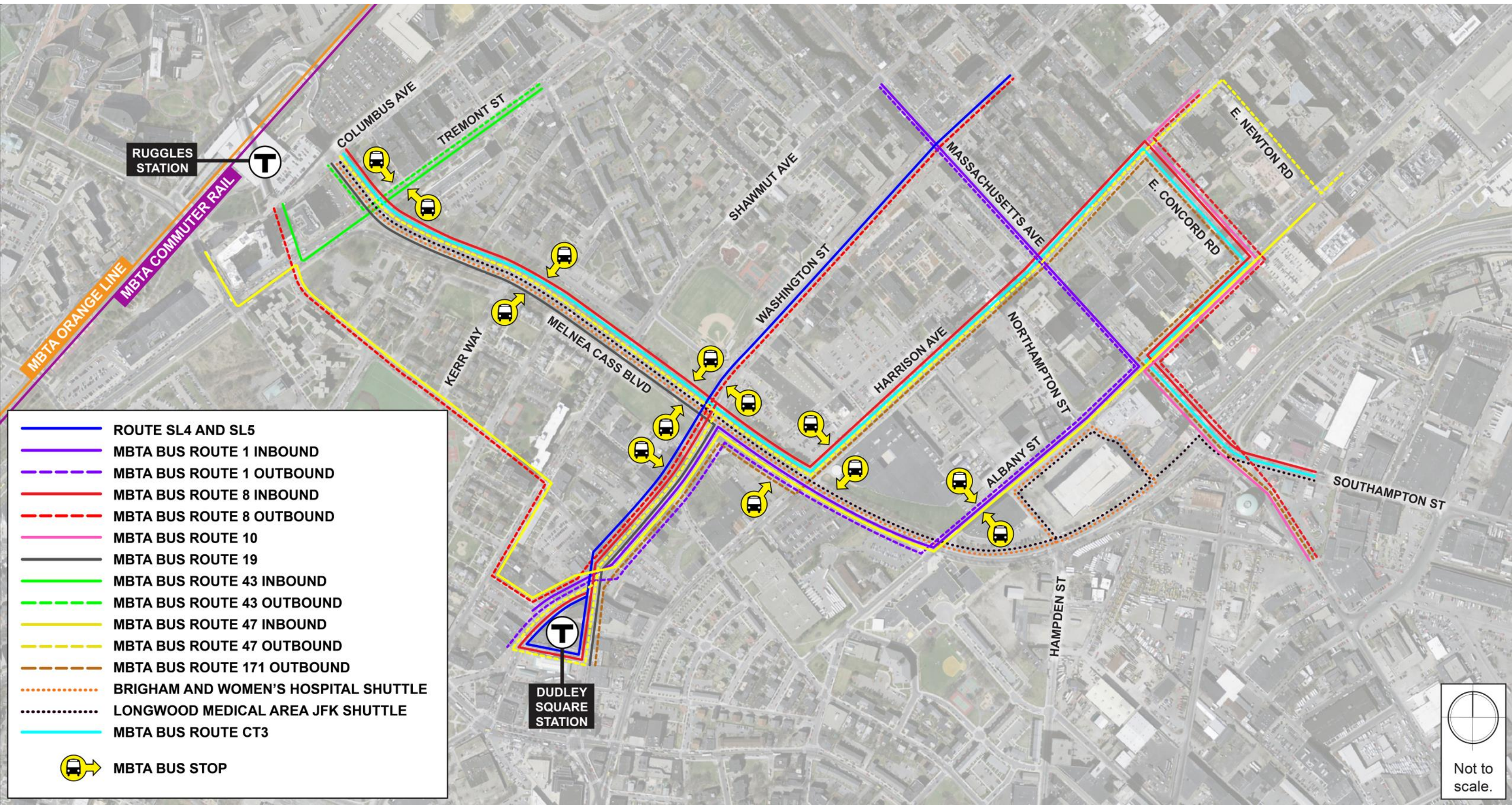


# Design Elements: Existing Public Transit

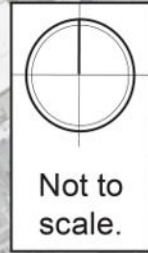


HOWARD STEIN HUDSON

Engineers + Planners

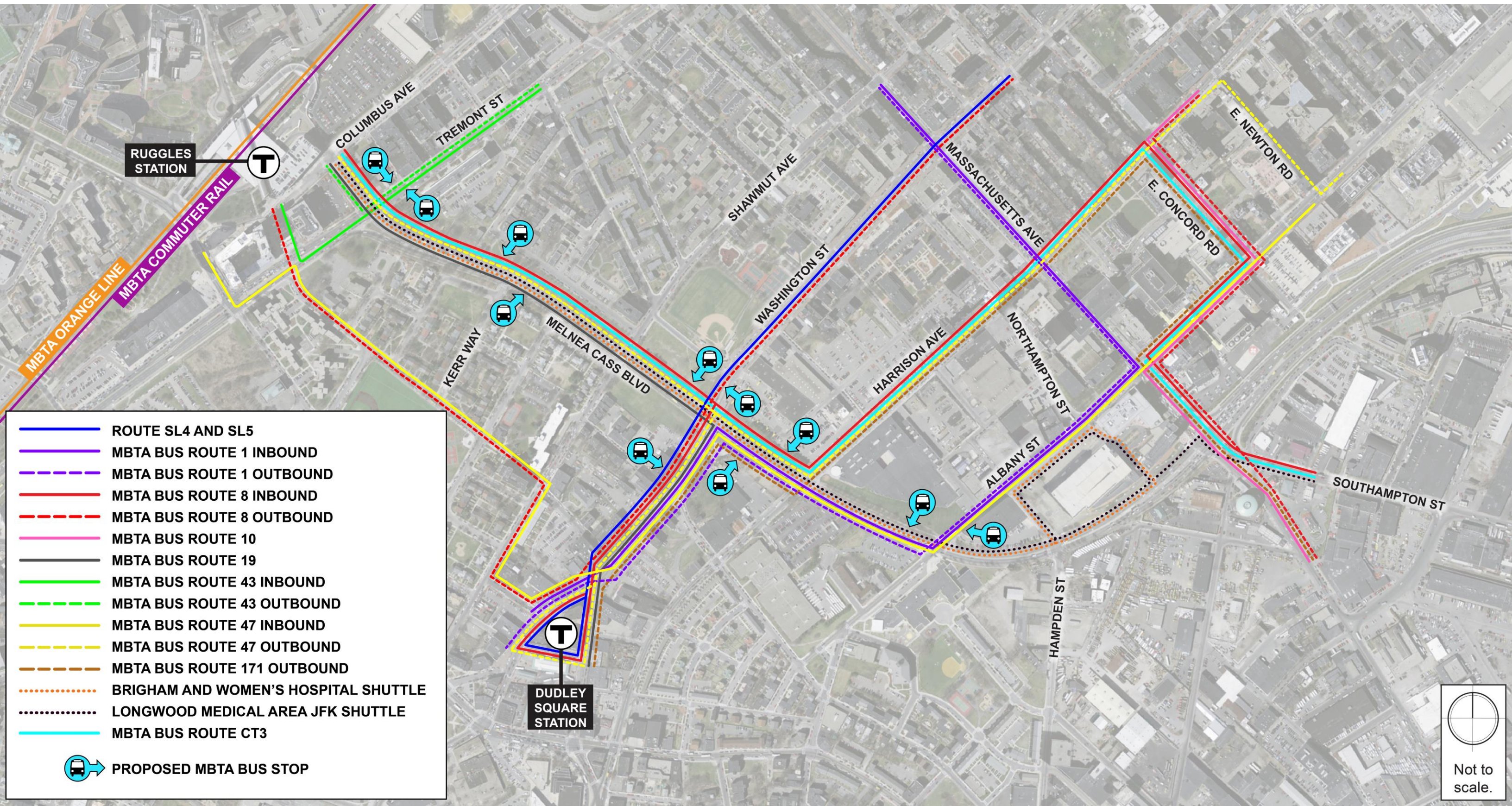



- ROUTE SL4 AND SL5
- MBTA BUS ROUTE 1 INBOUND
- - - MBTA BUS ROUTE 1 OUTBOUND
- MBTA BUS ROUTE 8 INBOUND
- - - MBTA BUS ROUTE 8 OUTBOUND
- MBTA BUS ROUTE 10
- MBTA BUS ROUTE 19
- MBTA BUS ROUTE 43 INBOUND
- - - MBTA BUS ROUTE 43 OUTBOUND
- MBTA BUS ROUTE 47 INBOUND
- - - MBTA BUS ROUTE 47 OUTBOUND
- - - MBTA BUS ROUTE 171 OUTBOUND
- - - BRIGHAM AND WOMEN'S HOSPITAL SHUTTLE
- - - - - LONGWOOD MEDICAL AREA JFK SHUTTLE
- MBTA BUS ROUTE CT3
- MBTA BUS STOP






# Design Elements: Proposed Public Transit



- ROUTE SL4 AND SL5
  - MBTA BUS ROUTE 1 INBOUND
  - - - MBTA BUS ROUTE 1 OUTBOUND
  - MBTA BUS ROUTE 8 INBOUND
  - - - MBTA BUS ROUTE 8 OUTBOUND
  - MBTA BUS ROUTE 10
  - MBTA BUS ROUTE 19
  - MBTA BUS ROUTE 43 INBOUND
  - - - MBTA BUS ROUTE 43 OUTBOUND
  - MBTA BUS ROUTE 47 INBOUND
  - - - MBTA BUS ROUTE 47 OUTBOUND
  - - - MBTA BUS ROUTE 171 OUTBOUND
  - · · · · BRIGHAM AND WOMEN'S HOSPITAL SHUTTLE
  - · · · · LONGWOOD MEDICAL AREA JFK SHUTTLE
  - MBTA BUS ROUTE CT3
-  PROPOSED MBTA BUS STOP

  
 Not to scale.

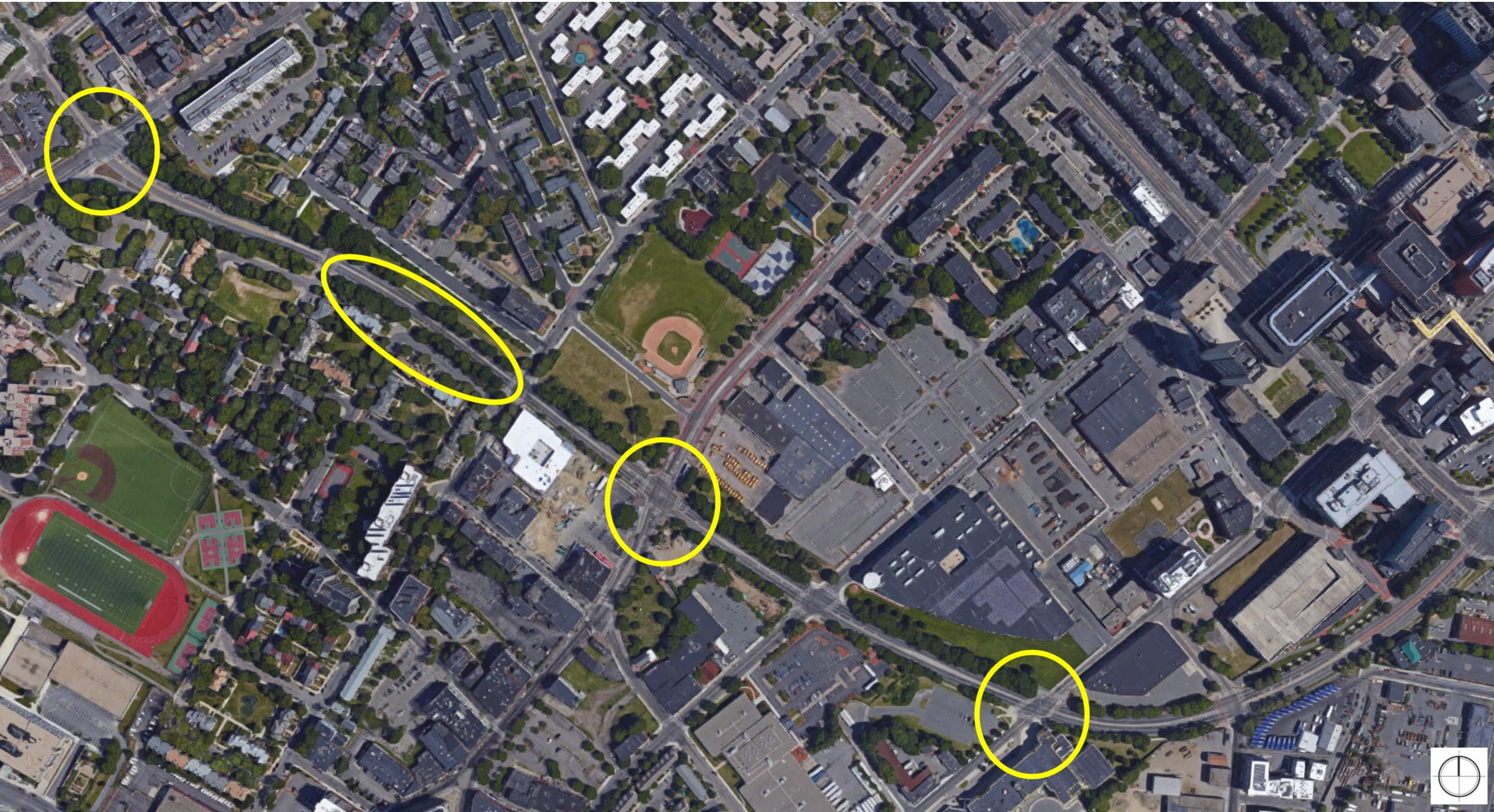


# Proposed Design Renderings



HOWARD STEIN HUDSON

Engineers + Planners





# Corridor Walk-through: Tremont Street



HOWARD STEIN HUDSON

Engineers + Planners





# Corridor Walk-through: SJ Truth to Shawmut Avenue



HOWARD STEIN HUDSON

Engineers + Planners



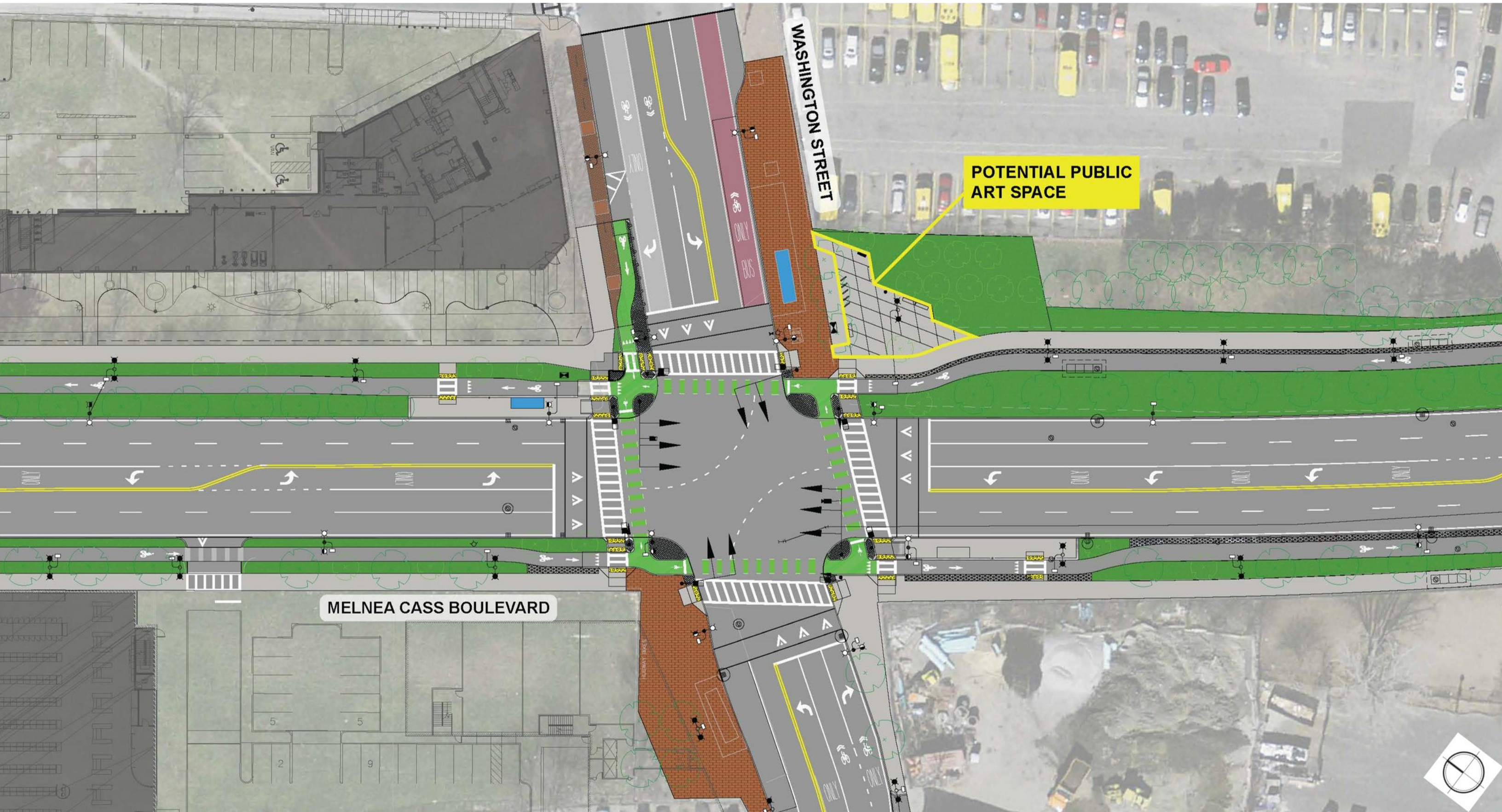


# Washington Street



HOWARD STEIN HUDSON

Engineers + Planners



POTENTIAL PUBLIC ART SPACE

MELNEA CASS BOULEVARD

WASHINGTON STREET





# Corridor Walk-through: Washington Street



HOWARD STEIN HUDSON  
Engineers + Planners



**MELNEA CASS**  
BOULEVARD  
DESIGN PROJECT

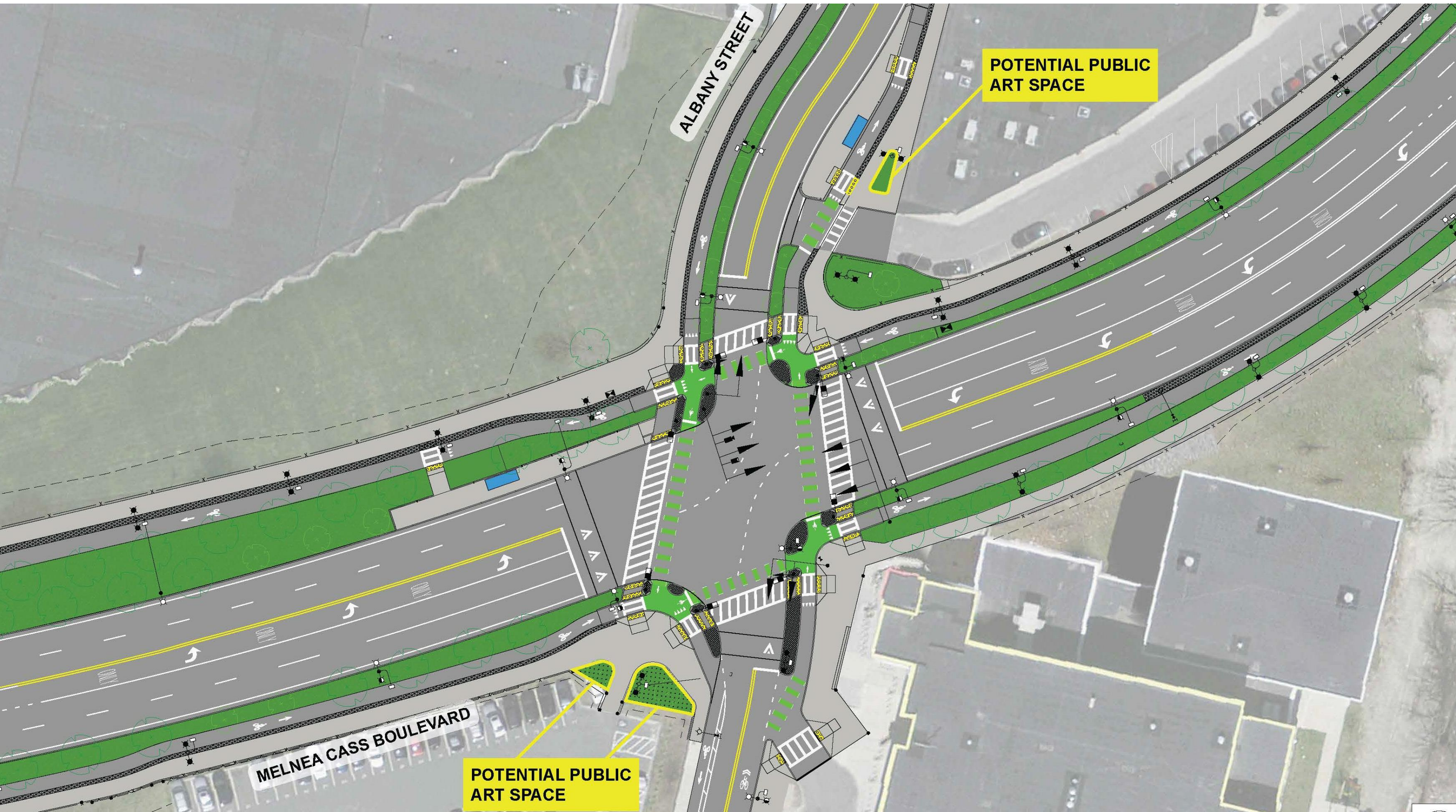


# Corridor Walk-through: Albany Street



HOWARD STEIN HUDSON

Engineers + Planners



POTENTIAL PUBLIC ART SPACE

POTENTIAL PUBLIC ART SPACE

MELNEA CASS BOULEVARD

ALBANY STREET



# Corridor Walk-through: Albany Street (cont.)



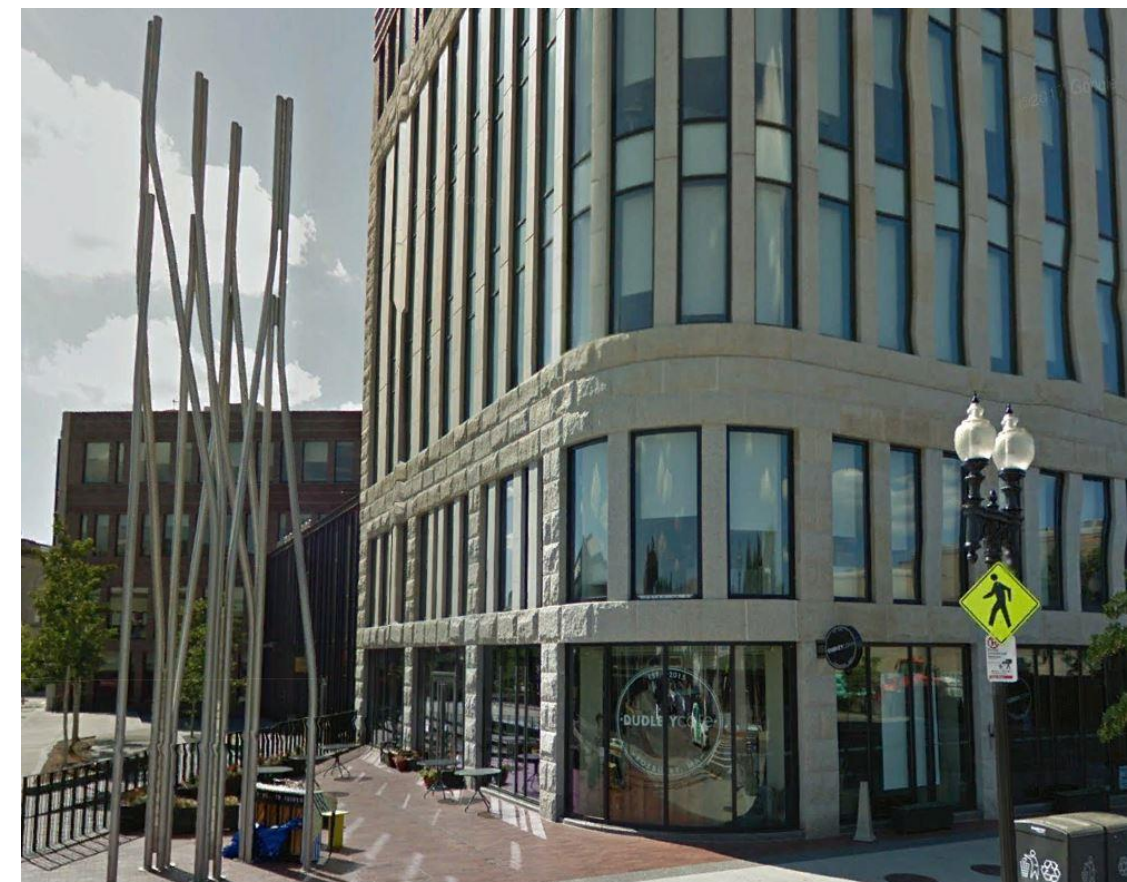
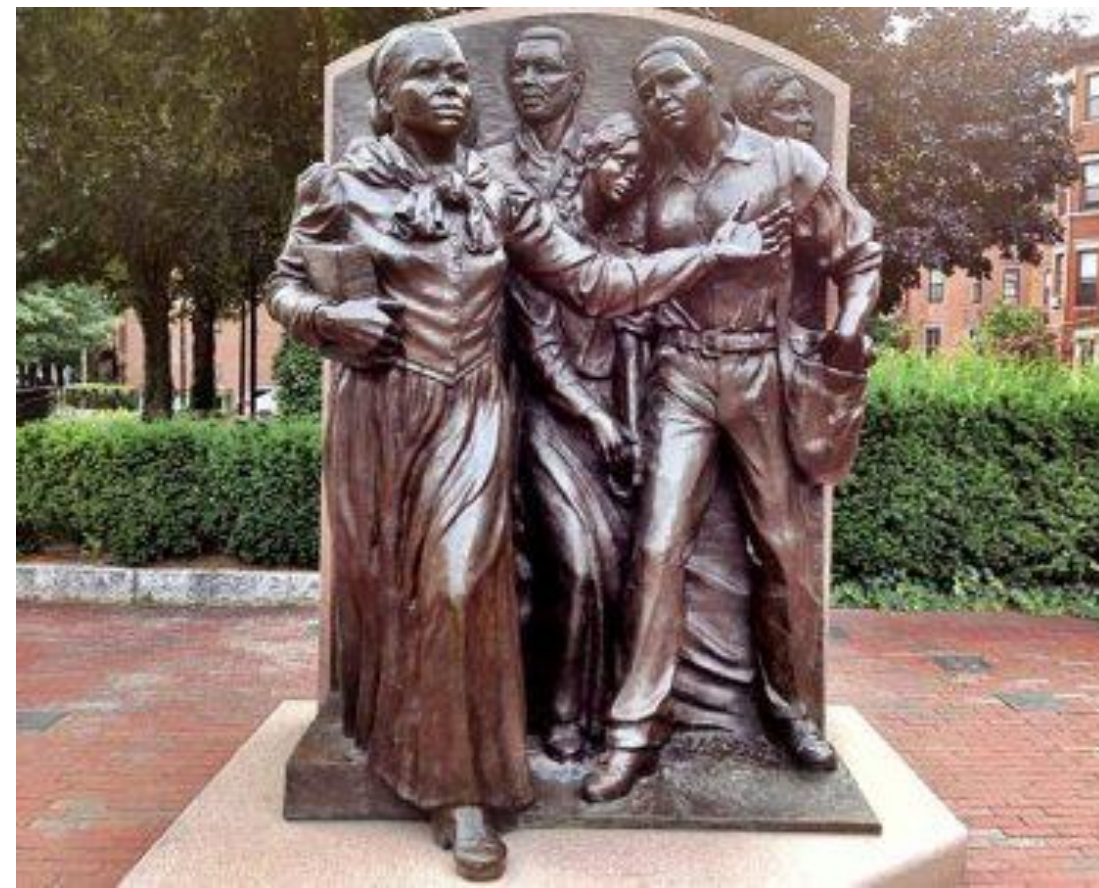
HOWARD STEIN HUDSON

Engineers + Planners





# Public Art





# Public Art (cont.)

27

- **Documented Desire for Public Art from Early Planning Forward**
- **Most Recently Voiced at the MEPA Site Walk:**
  - “Something to honor the legacy of Melnea Cass”
- **A Set of Challenges:**
  - Federal Transportation Earmark  
Can Not Pay for Public Art
  - What Public Art is Right to Honor Melnea Cass’ Legacy?
  - Are Funds Available to Plan and Install Public Art?





## ■ Planning:

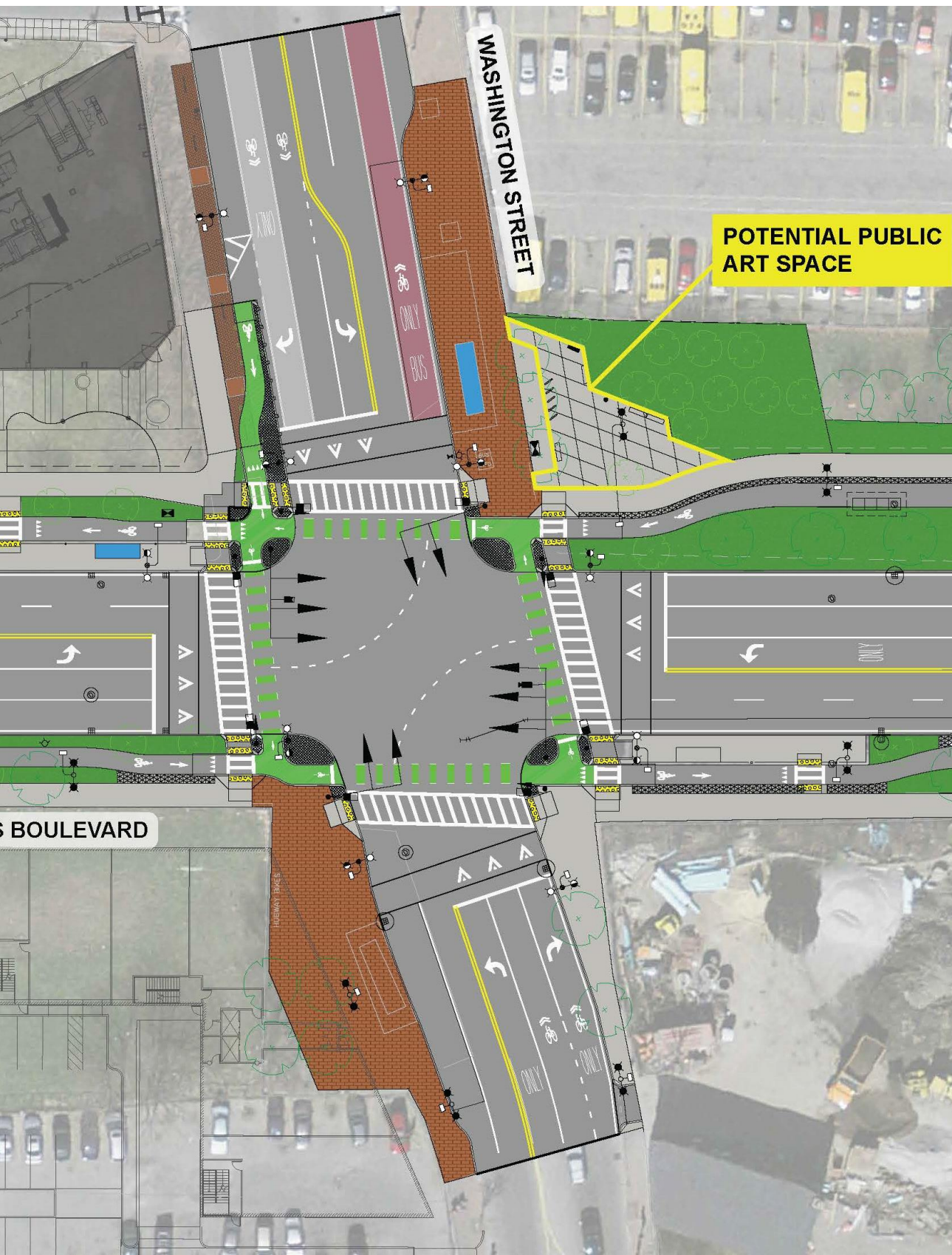
- Community-led: **Browne Fund** can provide a 1-year capacity and planning grant
  - *Applicable where a strong, focused community group is present*
- City-led: **Boston Percent for Art** can undertake planning with the community
  - *Applicable where a desire for public art is present, but community planning capacity is limited*

## ■ Implementation:

- City of Boston's **Percent for Art**
- **Browne Fund**
- **Henderson Foundation**
  - *May not fund the entire project*
  - *Grants are reimbursable – community must raise funds up front*



# What Would the Community Like to See?



- Washington Street/MCB are “Where the South End and Roxbury Shake Hands.”
  - The Project has Intentionally Created a Plaza Space Here Where Public Art Could be Placed
    - *Statuary?*
    - *A location for rotating art?*
    - *Something else?*
- Do the Corridor’s Entry Points at Either End Make More Sense?
- What about Albany Street/MCB at the Orchard Gardens K-8 School?
- Linear Options are also Possible:
  - Lamp Post Banners?
  - Poetry Stenciled on Sidewalks which is Revealed only When Wet?
  - Decorative Bicycle Racks or Benches?
  - Others?



# Landscape Design

30



Sweetgum  
LIQUIDAMBAR STYRACIFLUA



Zelkova  
ZELKOVA SERRATA



Pin Oak  
QUERCUS PALUSTRIS



Little Leaf Linden  
TILIA CORDATA



Red Oak  
ACER RUBRUM



Honey Locust  
GLEDITSIA TRIACANTHOS



Tulip Tree  
LIRIODENDRON TULIPIFERA



Magnolia  
MAGNOLIA SOULANGEANA



Dogwood  
CORNUS FLORIDA



# Existing Tree Canopy and Conflicts





# Existing Tree Canopy and Conflicts (cont.)



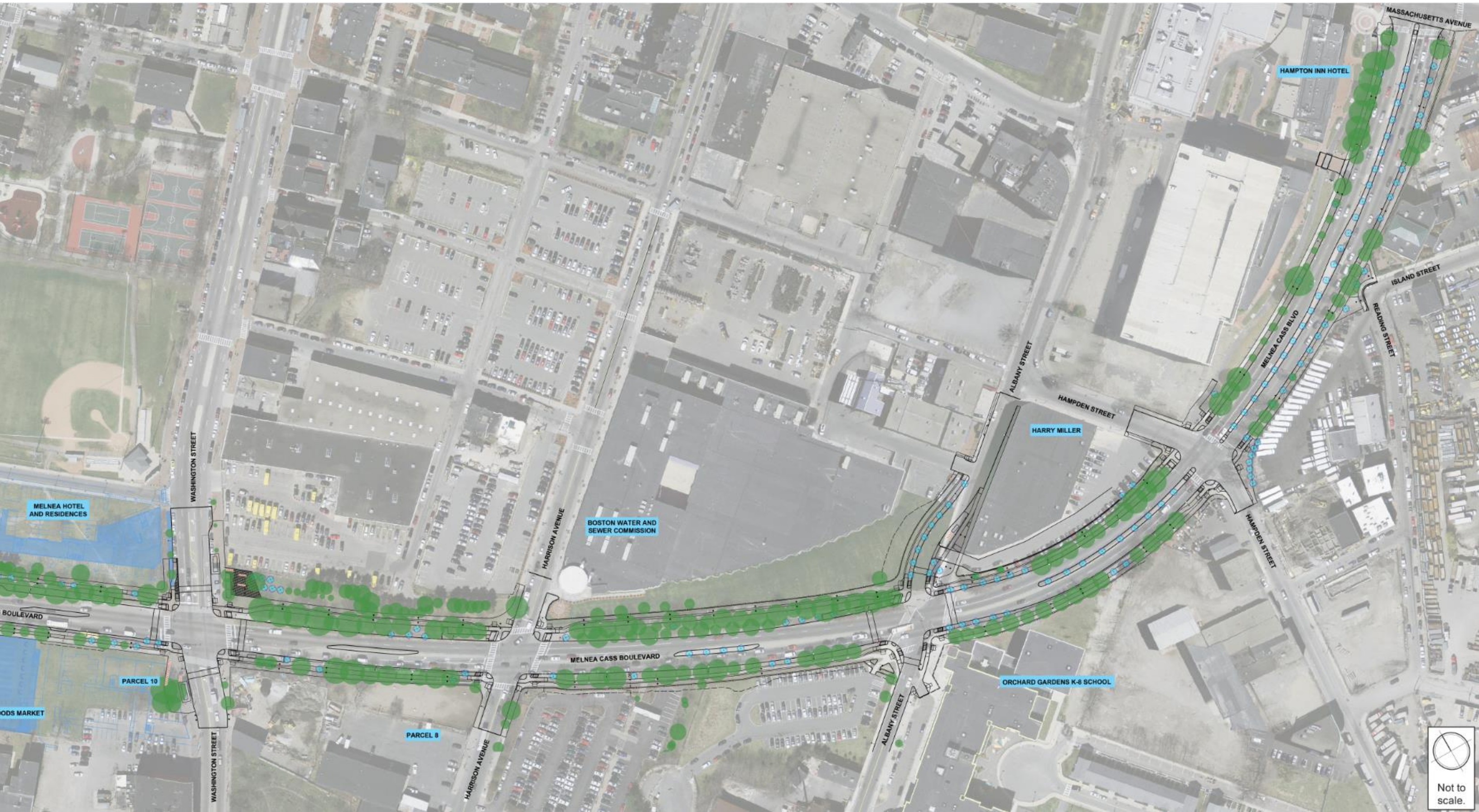


# Proposed Tree Canopy





# Proposed Tree Canopy (cont.)





# Existing Tree Canopy by Species



**LEGEND**

- CALLERY PEAR
- AMERICAN ELM
- LINDEN
- RED OAK
- KWANZAN CHERRY
- HONEY LOCUST
- GREEN ASH
- AUSTRIAN PINE / WHITE PINE
- NORWAY MAPLE
- SILVER LINDEN
- LONDON PLANE TREE
- SWEETGUM
- ZELKOVA
- SIBERIAN ELM
- NORWAY SPRUCE
- EASTERN COTTONWOOD
- PIN OAK

NOTE: THIS DIAGRAM IS FOR ILLUSTRATIVE PURPOSES; NOT ALL TREES ARE SHOWN IN COLOR





# Existing Tree Canopy by Species (cont.)





# Proposed Tree Canopy with Existing



HOWARD STEIN HUDSON

Engineers + Planners

## LEGEND

- CALLERY PEAR
- AMERICAN ELM
- LINDEN
- RED OAK
- KWANZAN CHERRY
- HONEY LOCUST
- GREEN ASH
- AUSTRIAN PINE / WHITE PINE
- NORWAY MAPLE
- SILVER LINDEN
- LONDON PLANE TREE
- SWEETGUM
- ZELKOVA
- SIBERIAN ELM
- NORWAY SPRUCE
- EASTERN COTTONWOOD
- PIN OAK

- TULIP TREE
- KOUSSA DOGWOOD
- SILVER MAPLE
- SAUCER MAGNOLIA
- UNCLASSIFIED TREE TYPE

NOTE: THIS DIAGRAM IS FOR ILLUSTRATIVE PURPOSES;  
NOT ALL TREES ARE SHOWN IN COLOR





# Proposed Tree Canopy with Existing (cont.)



HOWARD STEIN HUDSON

Engineers + Planners





# Proposed Tree Canopy Legend



HOWARD STEIN HUDSON

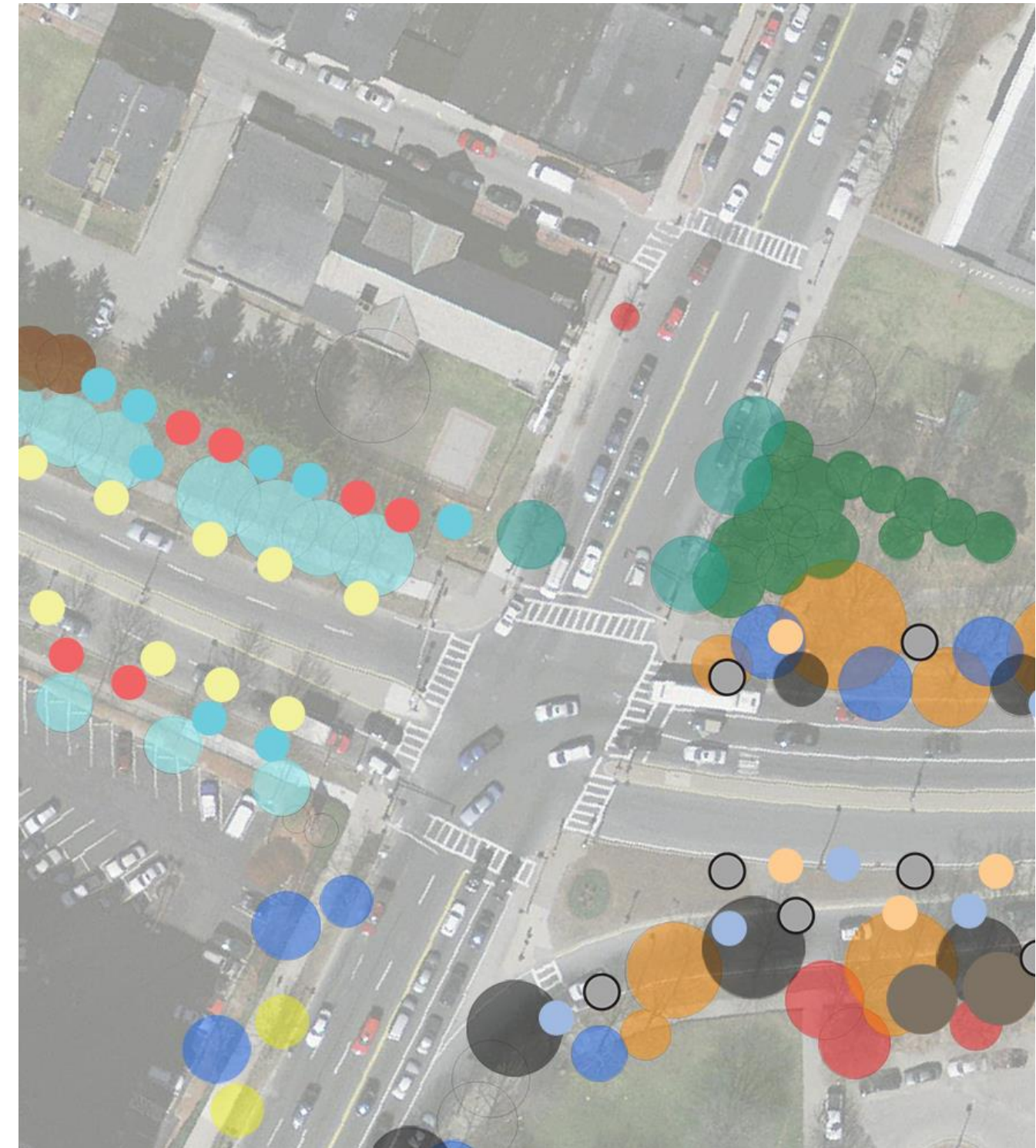
Engineers + Planners

## LEGEND

- CALLERY PEAR
- AMERICAN ELM
- LINDEN
- RED OAK
- KWANZAN CHERRY
- HONEY LOCUST
- GREEN ASH
- AUSTRIAN PINE / WHITE PINE
- NORWAY MAPLE
- SILVER LINDEN
- LONDON PLANE TREE
- SWEETGUM
- ZELKOVA
- SIBERIAN ELM
- NORWAY SPRUCE
- EASTERN COTTONWOOD
- PIN OAK

- TULIP TREE
- KOUSA DOGWOOD
- SAUCER MAGNOLIA
- UNCLASSIFIED TREE TYPE

NOTE: THIS DIAGRAM IS FOR ILLUSTRATIVE PURPOSES;  
NOT ALL TREES ARE SHOWN IN COLOR

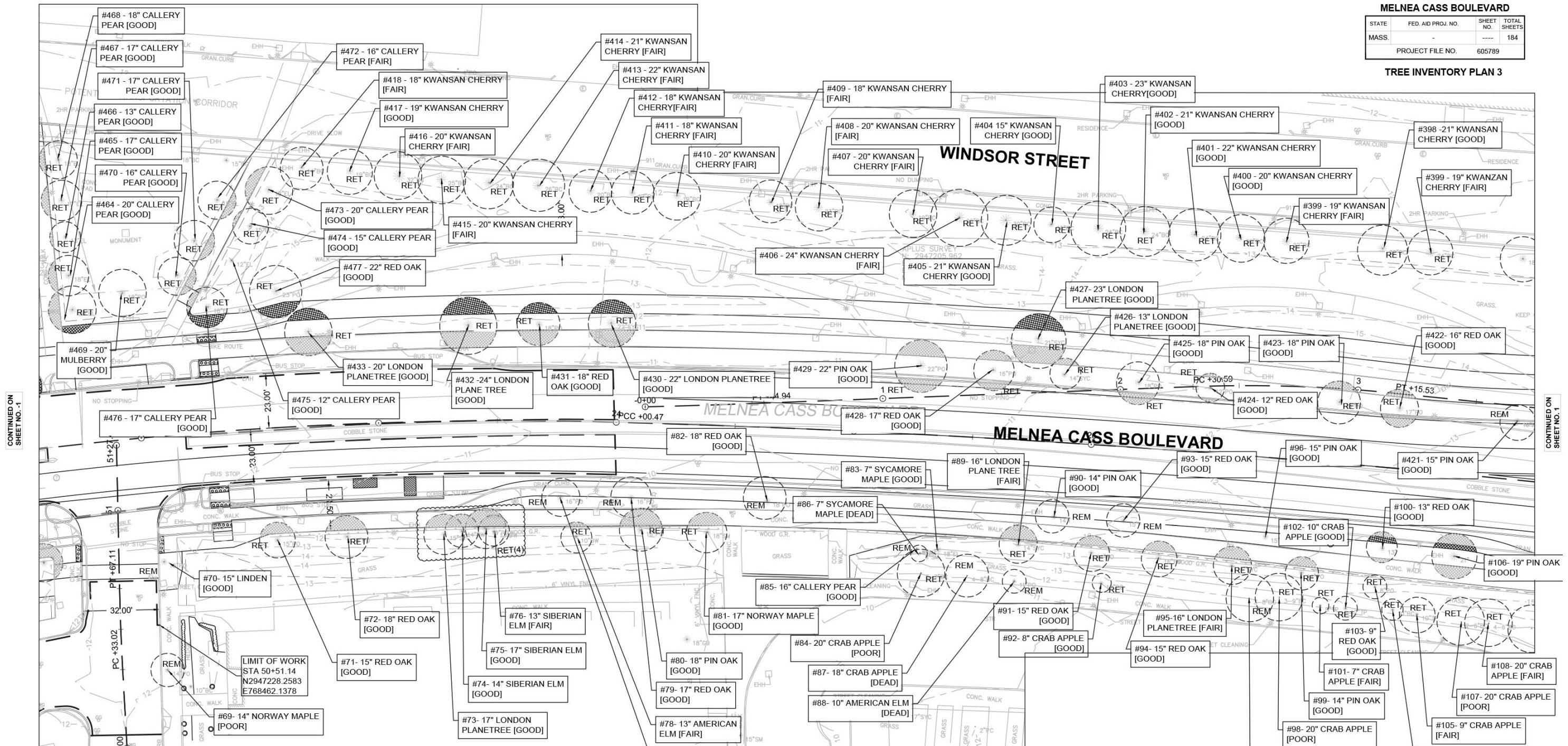




**BOSTON  
RECONSTRUCTION OF  
MELNEA CASS BOULEVARD**

STATE	FED. AID PROJ. NO.	SHEET NO.	TOTAL SHEETS
MASS.		---	184
PROJECT FILE NO. 605789			

**TREE INVENTORY PLAN 3**

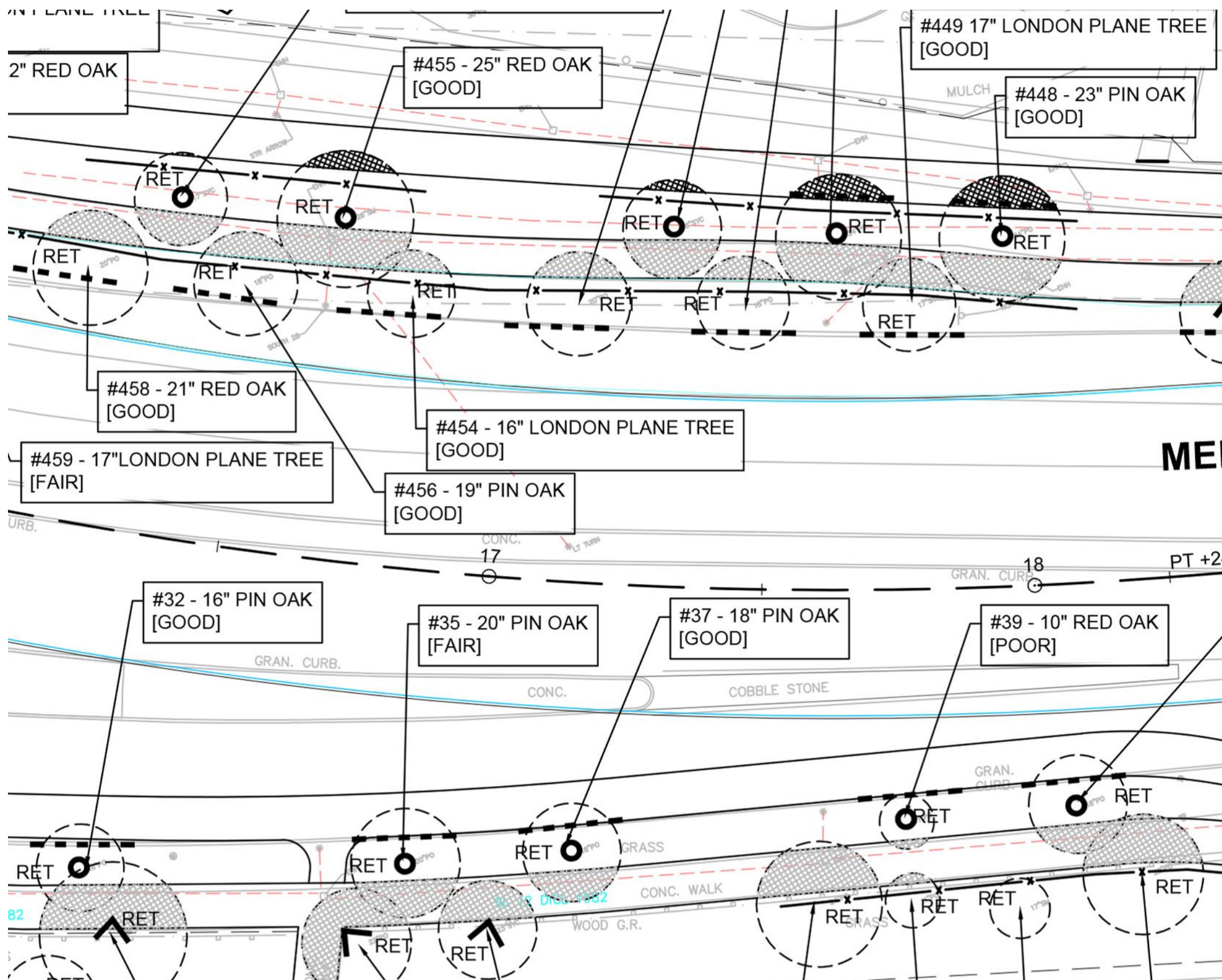


- Draft Tree Protection Plans showing Impacted Existing Trees and the hierarchy of Critical Root Zone Impacts








**MELNEA CASS  
BOULEVARD  
DESIGN PROJECT**



# Tree Protection (cont.)



## LEGEND

- 
 ESTIMATED CRITICAL ROOT ZONE OF EXISTING TREE TO BE RETAINED AND PROTECTED, BASED ON ±1' RADIUS PER 1" CALIPER (SEE NOTE 4)
- 
 POTENTIAL ADDITIONAL IMPACT TO CRITICAL ROOT ZONE(CRZ) DUE TO PROPOSED CONSTRUCTION ACTIVITY (EXISTING ROOTS ARE CURRENTLY UNDER PAVING)
- 
 POTENTIAL NEW IMPACT TO CRITICAL ROOT ZONE(CRZ) DUE TO PROPOSED CONSTRUCTION ACTIVITY (SEE NOTE 4) EXISTING ROOTS ARE NOT CURRENTLY UNDER PAVING)
- REM REMOVE TREE
- RET RETAIN TREE
- 
 TEMPORARY TREE PROTECTION FENCE - 6"-0" HT. CHAIN LINK FOR TREE PROTECTION
- 
 TREE PROTECTION - CLADDING ON ONE SIDE OF TREE
- 
 TREE PROTECTION - CLADDING ALL AROUND TREE
- 
 TREE WITH EXPANDED ROOT SPACE - ROOTS TO BE PRUNED BY ARBORIST

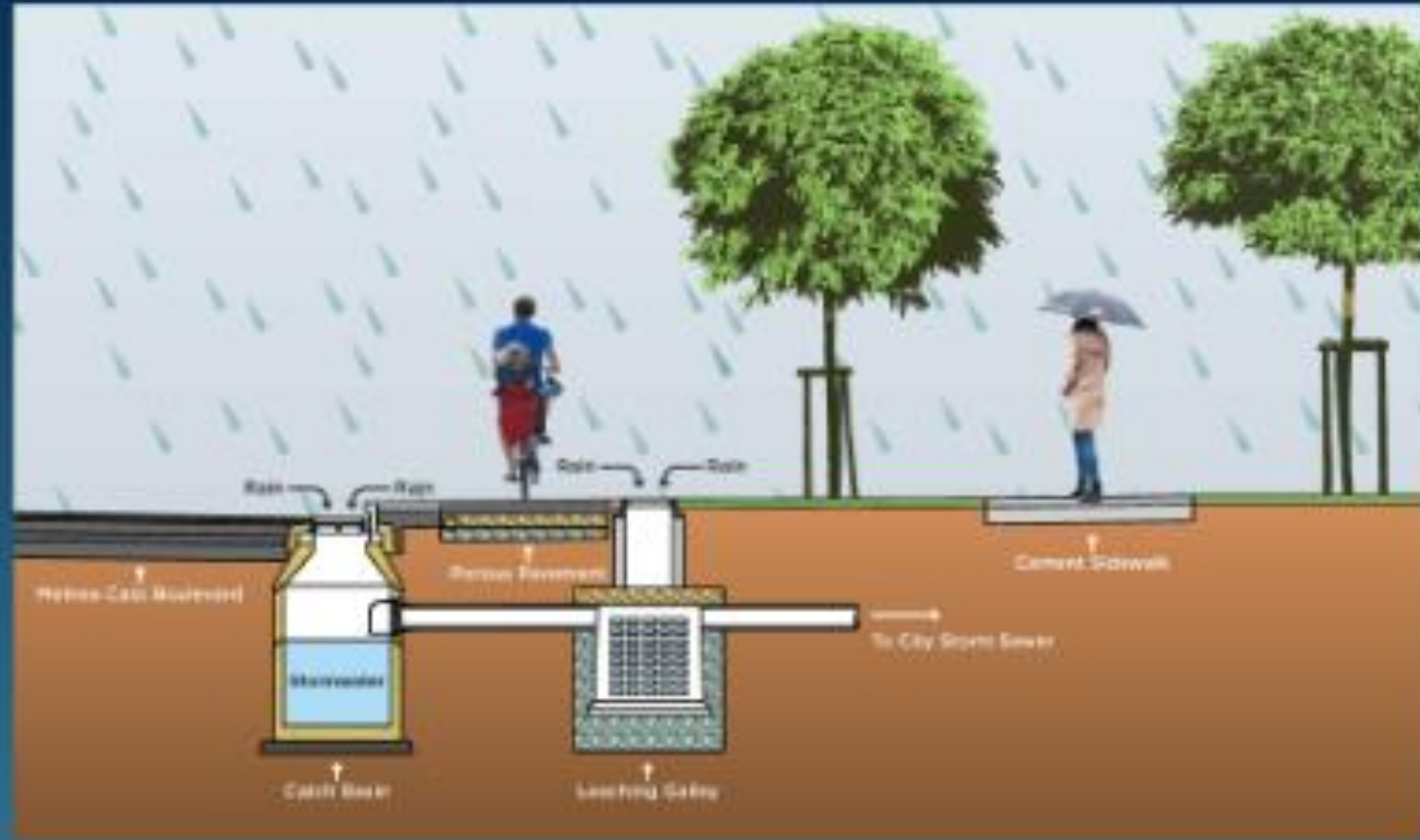




- Temporary Chain Link Fencing in Construction Areas
- Layout of Construction Limits and Air Spading Trench
- Root Pruning for Improved Tree Health during and after construction
- Tree Canopy Trimming by a Certified Arborist



## TYPICAL STORMWATER LAYOUT



## LEACHING GALLEY



- Improved Stormwater Storage, Porous Bike Lanes, and Green Infrastructure
- Raise Roadway Low Point 1 Foot to Protect Against Tidal Flooding
- Net Increase of Trees for Future Tree Canopy Growth



*The City of Boston is fully committed to the long-term maintenance of a modernized Melnea Cass Boulevard, a complete streets design that emphasizes safety and environmental stewardship*

~ Chris Osgood Chief of Streets,  
Transportation, and Sanitation

- Investment into equipment
- Coordination with Abutters
- Extended 2-year maintenance obligation of Trees by Construction Contractor
- Agreements with Abutting Businesses
- Coordination between City Agencies

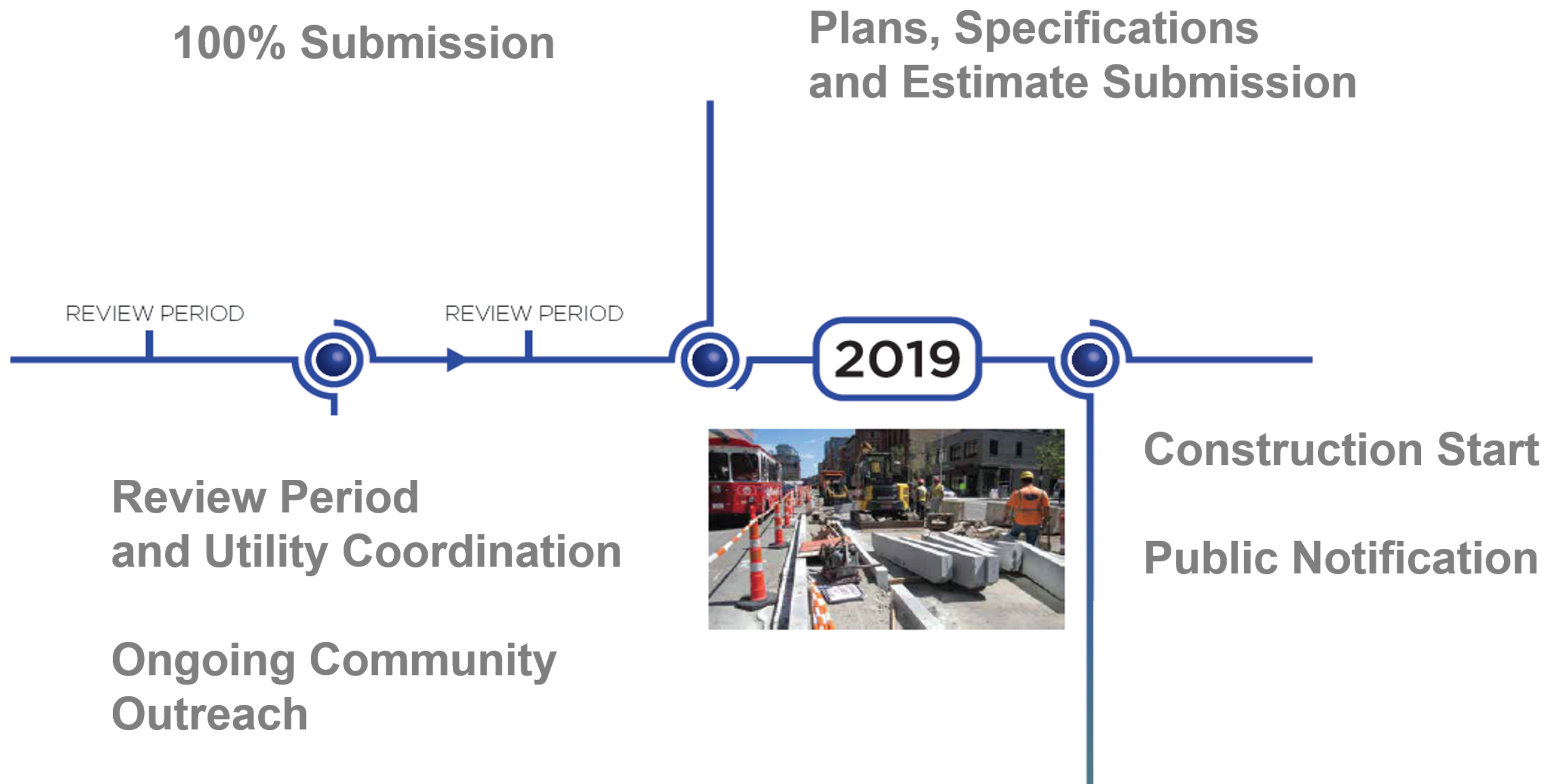




# Opportunities: Balance of Stakeholder Needs

- **Emergency Response Operations**
  - Boston MC, Boston Fire, EMS, Boston PD, Longwood MC
- **Community Groups and Transportation Advocates**
  - UNLR, Orchard Gardens, Friends of Melnea Cass Boulevard, Boston Cyclist Union, Livable Streets, Walk Boston
- **Transit Needs**
- **Regional Traffic Demand**
- **Future Maintenance**
  - City Interagency Coordination Effort for Sustainability







QUESTIONS & COMMENTS

# MELNEA CASS BOULEVARD DESIGN PROJECT

