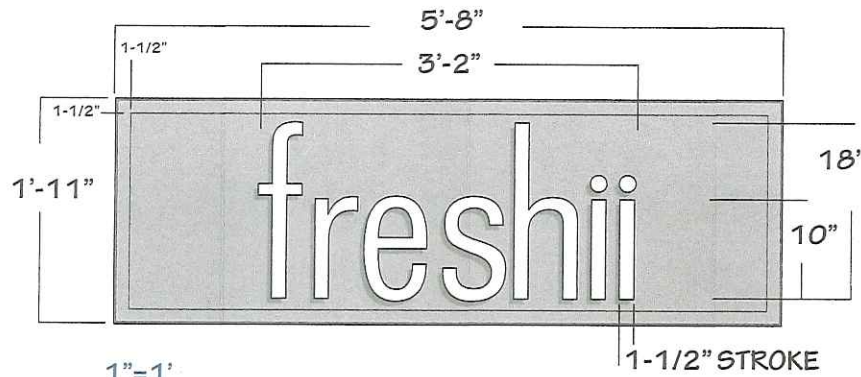


COMPREHENSIVE SIGN APPROVAL
BOSTON ZONING CODE, ART. 11, AS AMENDED

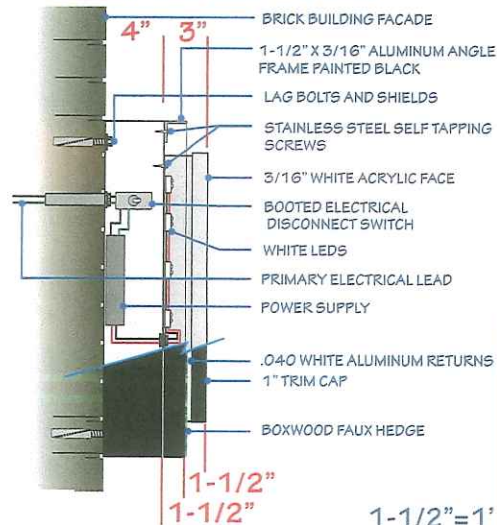
URBAN DESIGN DEPT.
BOSTON REDEVELOPMENT AUTHORITY

APPROVED BY  DATE 9.25.18



1'11" X 5'8" X 4" FABRICATED ALUMINUM SIGN CABINET.
SIGN CABINET WILL HAVE 3" DEEP LED CHANNEL LETTERS SECURED TO FACE WHICH WILL BE FACED WITH EXTERIOR GRADE BOXWOOD FAUX HEDGE. (EXACT STYLE TO BE DETERMINED) FAUX HEDGE WILL BE CUT TO ALLOW 1-1/2" OF THE CHANNEL LETTER EXPOSED.
EXPOSED ALUMINUM SURFACES WILL BE PAINTED BLACK. 1-1/2" X 1-1/2" X 3/16" ALUMINUM ANGLE FRAME ATTACHED TO SIGN FACE W/ SELF TAPPING SCREWS. FRAME PAINTED BLACK.
SIGN WILL BE CONNECTED TO 120V POWER SOURCE BROUGHT TO SIGN BY ELECTRICIAN

SIDE PROFILE/ DETAIL

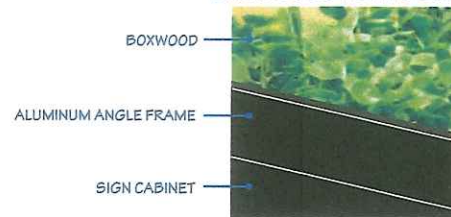


 SIGN WILL BE MANUFACTURED ACCORDING TO U.L. SPECIFICATIONS AND U.L. LABELED

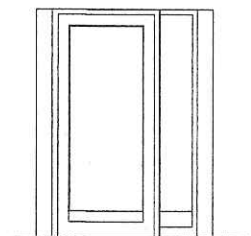
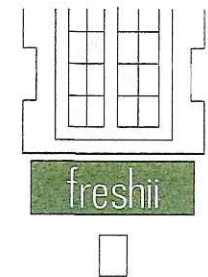
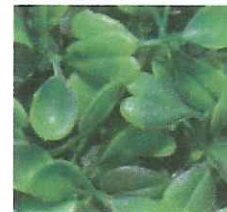
BOXWOOD FASCIA/ FRONT VIEW



CROSS SECTION/ DETAIL



BOXWOOD DETAIL



GenSign
DESIGN • ENGINEERING

841 Worcester Road, Suite 514 Natick, Ma 01760-2076
T 617.332.2000 C 617.694.7666 F 888.449.0808 Sales@gensign.com

Project	Freshii
Location	
Description	

Rev 1	MN	9/10/18
Rev 2	MN	9/18/18
Rev 3		
Revisions	By	RBW

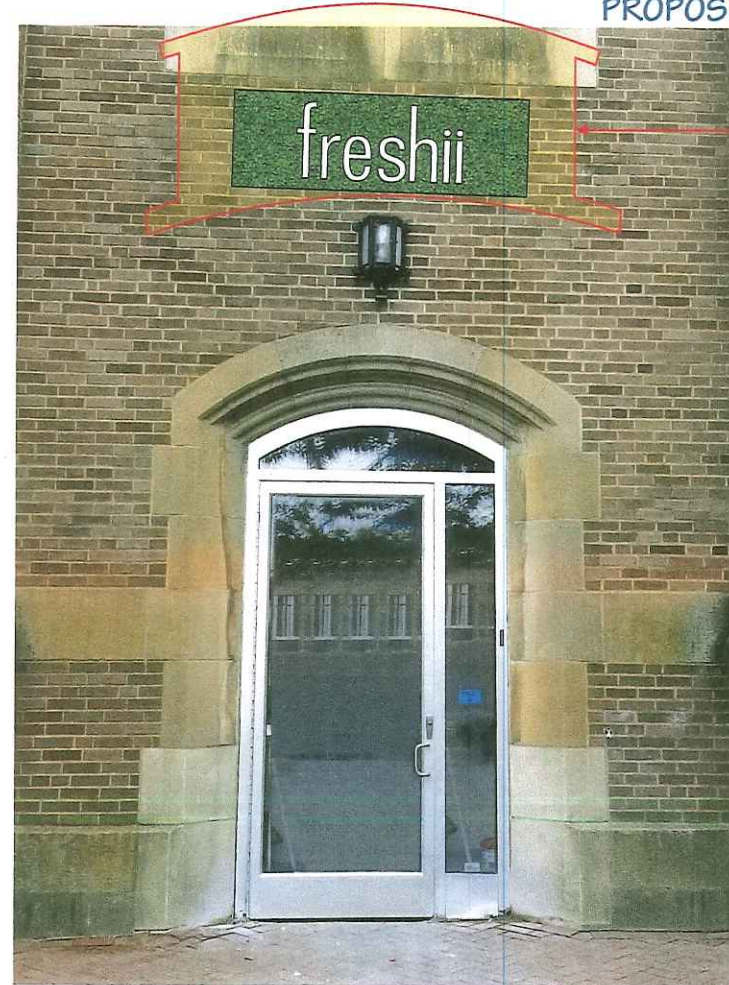
File Name	Freshii
Project No.	
This drawing is given in confidence and may not be used or disseminated in any way without prior written consent from this Company. All common law and copyright laws are hereby specifically reserved.	

Scale as noted	Date	9/14/18
Drawn	RBW	Sheet 1 of 2
Dwg. No.		

EXISTING SIGNAGE



PROPOSED SIGNAGE



EXISTING SIGN PROFILE

COMPREHENSIVE SIGN APPROVAL
BOSTON ZONING CODE, ART. 11, AS AMENDED

URBAN DESIGN DEPT.
BOSTON REDEVELOPMENT AUTHORITY
APPROVED BY *[Signature]* DATE 9.25.2018

GenSign
DESIGN • ENGINEERING

841 Worcester Road, Suite 514 Natick, Ma 01760-2076
T 617.332.2000 C 617.694.7666 F 888.449.0908 Sales@gensign.com

Project **Freshii**

Location

Description

Rev 1

Rev 2

Rev 3

Revisions

MN

MN

By

9/10/18

9/18/18

RBW

File Name **Freshii**

Project No.

This drawing is given in confidence and may not be used or disseminated in any way without prior written consent from GenSign. All common law and copyright laws are hereby specifically reserved.

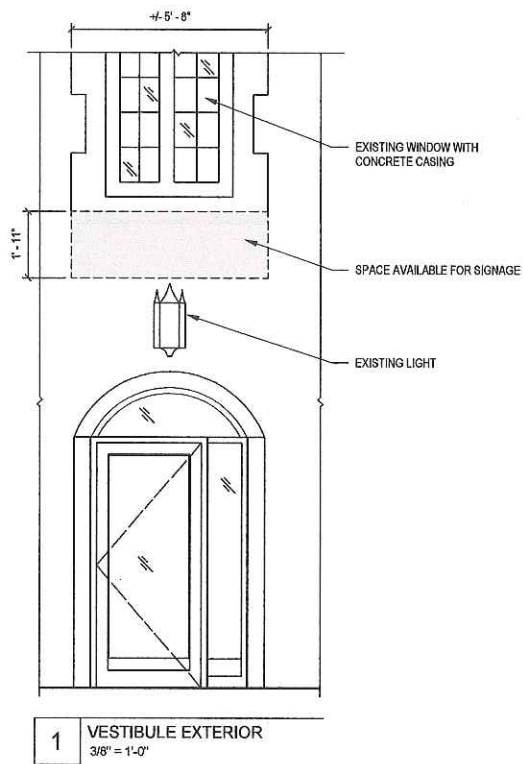
Scale as noted

Drawn **RBW**

Dwg. No.

Date **8/14/18**

Sheet **2 of 2**



FRESHII SIGNAGE AREA

SCC-01 RETAIL PHARMACY AND CAFE
BETH ISRAEL DEACONESS MEDICAL CENTER

06/18/18

www.isgenuity.com | 321 Summer Street, Suite 401 | Boston, MA 02210 | 617 419 4660

