



**ProTerra**  
DESIGN GROUP, LLC



**Prepared For:  
Verizon Wireless**

**Site Name:  
Bos Med Ctr SC12 MA  
433608**

**Site Address (near):  
818-840 Harrison Avenue  
Boston, MA 02118**

**Prepared By:  
Caron & Associates Design**

**Benjamin E. Caron  
301 Concord Street  
Haverhill, MA 01830  
(978) 360-3671  
ben@cadsim.com**

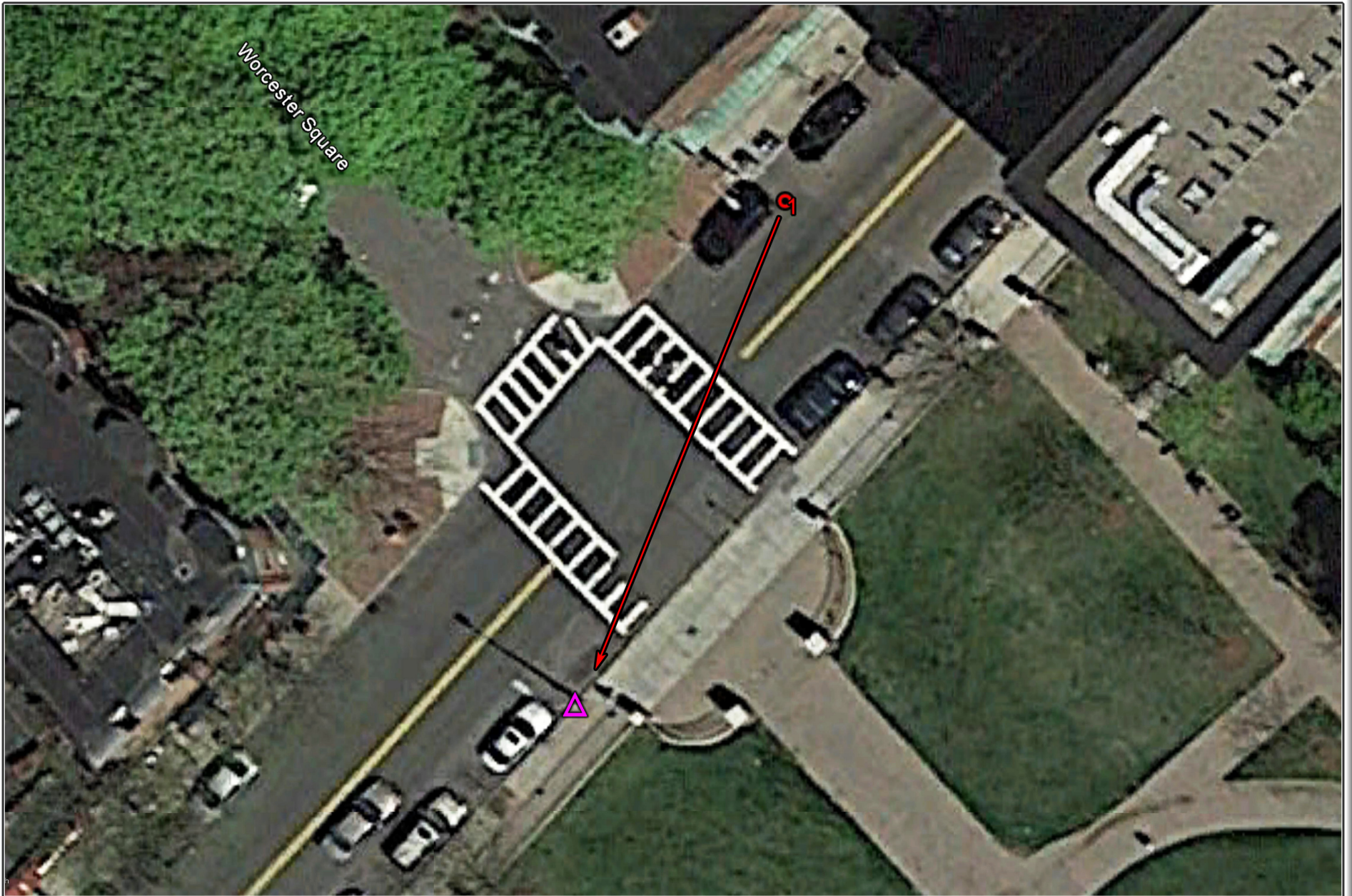


For visual reference only. Actual visibility is dependent upon weather conditions, season, sunlight, and viewer location.

**Bos Med Ctr SC12 MA ~ 433608 ~ (11/21/16)**  
**Photographic Renderings**

*Based upon Rev1 Lease Exhibit by  
ProTerra dated: 11/03/2016 and Emailed  
specifications and information on 11/18/2016*

**Created By: Ben Caron**  
 **Caron & Associates Design**  
**(978) 360-3671 info@cadsim.com**



For visual reference only. Actual visibility is dependent upon weather conditions, season, sunlight, and viewer location.

**Bos Med Ctr SC12 MA ~ 433608 ~ (11/21/16)**  
Photo Location Map

Based upon Rev1 Lease Exhibit by ProTerra dated: 11/03/2016 and Emailed specifications and information on 11/18/2016

Created By: Ben Caron  
**CAD** Caron & Associates Design  
(978) 360-3671 [info@cadsim.com](mailto:info@cadsim.com)



**ProTerra**  
DESIGN GROUP, LLC

**Existing  
Conditions**



For visual reference only. Actual visibility is dependent upon weather conditions, season, sunlight, and viewer location.

**Bos Med Ctr SC12 MA ~ 433608 ~ (11/21/16)**  
Photo Location 1 ~ 50mm ~ 98'+/- Away

*Based upon Rev1 Lease Exhibit by  
ProTerra dated: 11/03/2016 and Emailed  
specifications and information on 11/18/2016*

Created By: Ben Caron  
 Caron & Associates Design  
(978) 360-3671 info@cadsim.com



For visual reference only. Actual visibility is dependent upon weather conditions, season, sunlight, and viewer location.

*Based upon Rev1 Lease Exhibit by ProTerra dated: 11/03/2016 and Emailed specifications and information on 11/18/2016*

**Bos Med Ctr SC12 MA ~ 433608 ~ (11/21/16)**  
Photo Location 1 ~ 50mm ~ 98'+/- Away

Created By: Ben Caron  
**CAD** Caron & Associates Design  
(978) 360-3671 info@cadsim.com



**ProTerra**  
DESIGN GROUP, LLC



**Prepared For:**  
**Verizon Wireless**

**Site Name:**  
**Bos Med Ctr SC10 MA**  
**433606**

**Site Address (near):**  
**702 Massachusetts Avenue**  
**Boston, MA 02118**

**Prepared By:**

**Caron & Associates Design**

**Benjamin E. Caron**  
**301 Concord Street**  
**Haverhill, MA 01830**  
**(978) 360-3671**  
**ben@cadsim.com**

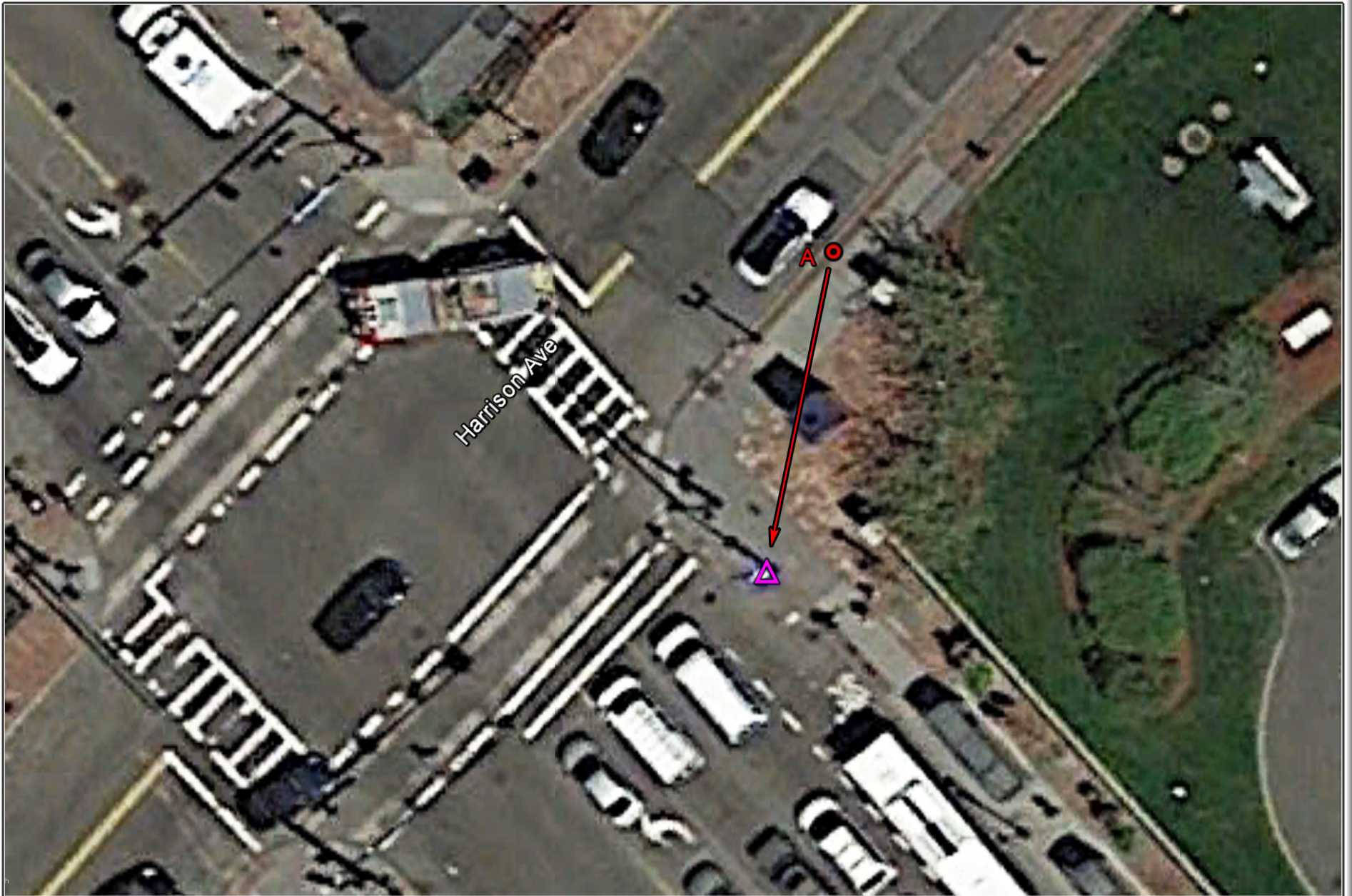


For visual reference only. Actual visibility is dependent upon weather conditions, season, sunlight, and viewer location.

Based upon Rev1 Lease Exhibit by ProTerra dated: 11/04/2016 and Emailed specifications and information on 11/18/2016

**Bos Med Ctr SC10 MA ~ 433606 ~ (11/21/16)**  
**Photographic Renderings**

**Created By: Ben Caron**  
**Caron & Associates Design**  
**(978) 360-3671 info@cadsim.com**



For visual reference only. Actual visibility is dependent upon weather conditions, season, sunlight, and viewer location.

**Bos Med Ctr SC10 MA ~ 433606 ~ (11/21/16)**  
Photo Location Map

Based upon Rev1 Lease Exhibit by ProTerra dated: 11/04/2016 and Emailed specifications and information on 11/18/2016

Created By: Ben Caron  
**CAD** Caron & Associates Design  
(978) 360-3671 info@cadsim.com

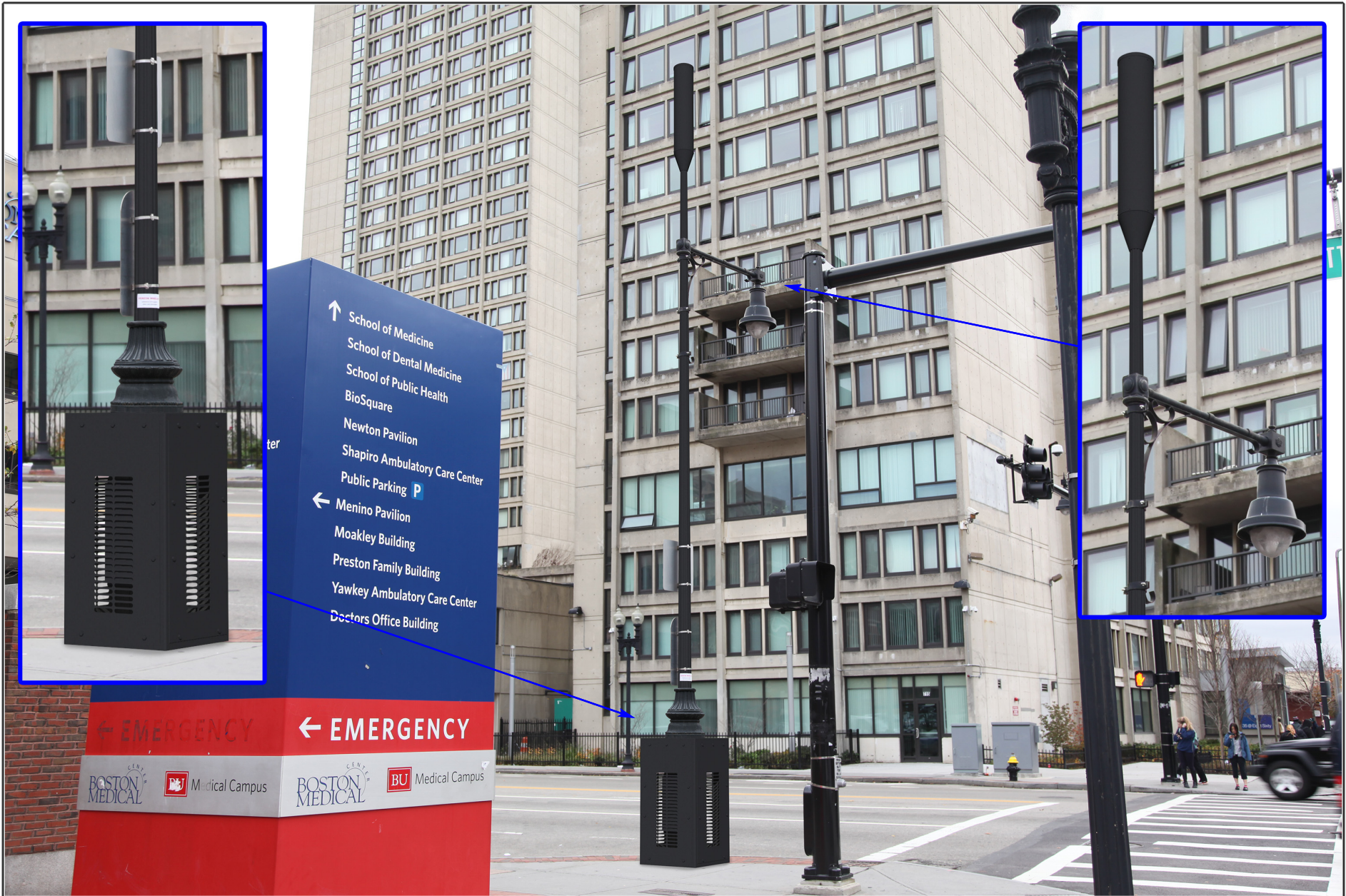


For visual reference only. Actual visibility is dependent upon weather conditions, season, sunlight, and viewer location.

**Bos Med Ctr SC10 MA ~ 433606 ~ (11/21/16)**  
Photo Location A ~ 35mm ~ 51' +/- Away

Based upon Rev1 Lease Exhibit by ProTerra dated: 11/04/2016 and Emailed specifications and information on 11/18/2016

Created By: Ben Caron  
**CAD** Caron & Associates Design  
(978) 360-3671 info@cadsim.com



For visual reference only. Actual visibility is dependent upon weather conditions, season, sunlight, and viewer location.

Based upon Rev1 Lease Exhibit by ProTerra dated: 11/04/2016 and Emailed specifications and information on 11/18/2016

**Bos Med Ctr SC10 MA ~ 433606 ~ (11/21/16)**  
Photo Location A ~ 35mm ~ 51' +/- Away

Created By: Ben Caron  
**CAD** Caron & Associates Design  
(978) 360-3671 info@cadsim.com





**ProTerra**  
DESIGN GROUP, LLC

4 Bay Road, Bldg. A Ph: (413)320-4918  
Suite 200  
Hadley, MA 01035

**SOUTH END SC02 MA - LOCATION CODE: 297130**

POLE LOCATION: 104 E BERKELEY STREET  
SOUTH END NEIGHBORHOOD BOSTON, MA 02118

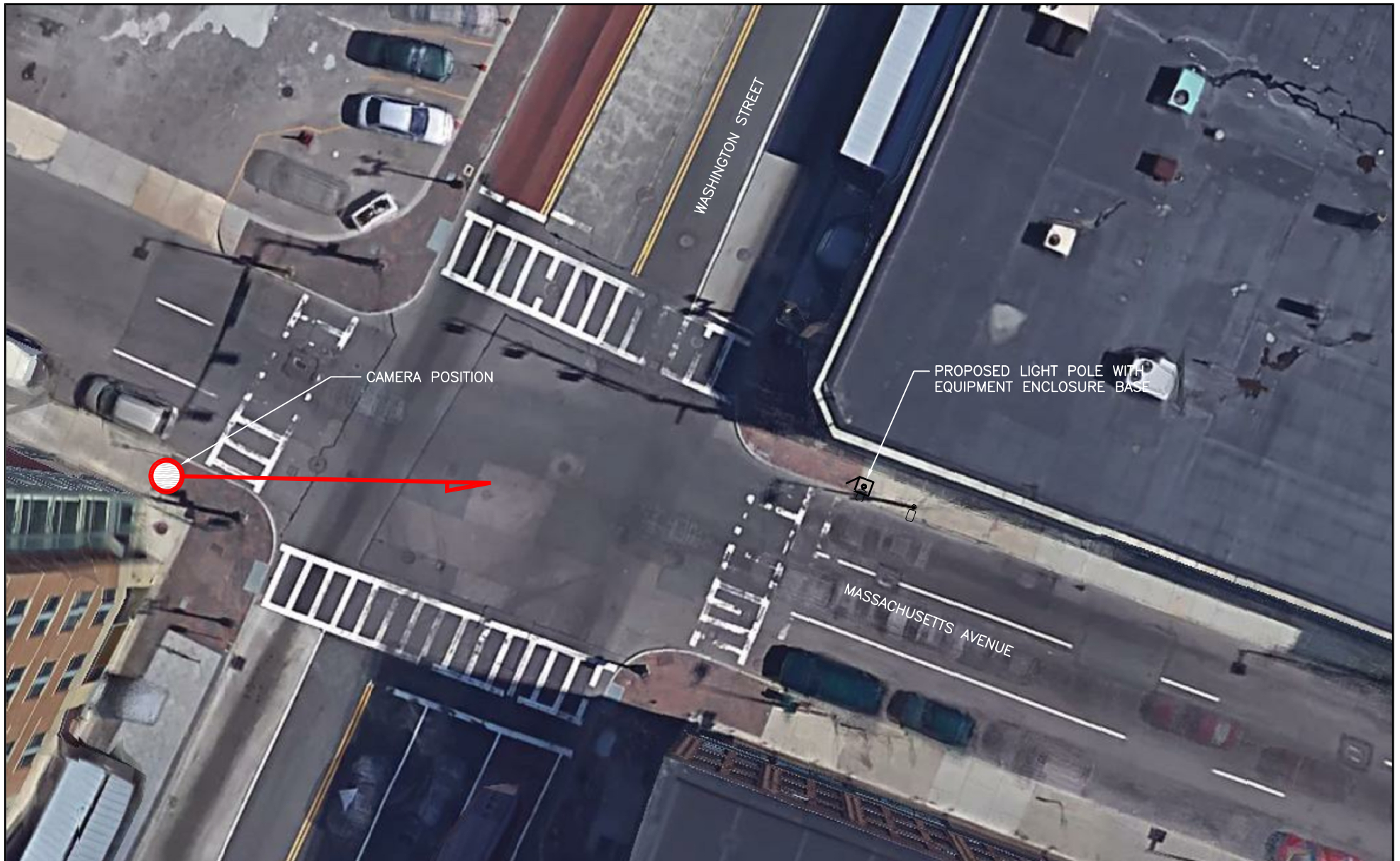
CAMERA LOCATION: 120'±

LENS LENGTH: 50MM

THIS DOCUMENT IS FOR VISUAL REFERENCE ONLY.  
VISIBILITY MAY VARY DEPENDING ON CONDITIONS, SEASONS, AND VIEWER LOCATION.

**verizon**✓

118 FLANDERS ROAD  
THIRD FLOOR  
WESTBOROUGH, MA 01581



**ProTerra**  
DESIGN GROUP, LLC

4 Bay Road, Bldg. A    Ph: (413)320-4918  
Suite 200  
Hadley, MA 01035

**SOUTH END SC02 MA - LOCATION CODE: 297130**

**POLE LOCATION: 104 E BERKELEY STREET  
SOUTH END NEIGHBORHOOD BOSTON, MA 02118**

**CAMERA LOCATION: 120'±**

**LENS LENGTH: 50MM**

THIS DOCUMENT IS FOR VISUAL REFERENCE ONLY.  
VISIBILITY MAY VARY DEPENDING ON CONDITIONS, SEASONS, AND VIEWER LOCATION.

**verizon** ✓

118 FLANDERS ROAD  
THIRD FLOOR  
WESTBOROUGH, MA 01581



**ProTerra**  
DESIGN GROUP, LLC

4 Bay Road, Bldg. A Ph: (413)320-4918  
Suite 200  
Hadley, MA 01035

**SOUTH END SC02 MA - LOCATION CODE: 297130**

**POLE LOCATION: 104 E BERKELEY STREET  
SOUTH END NEIGHBORHOOD BOSTON, MA 02118**

**CAMERA LOCATION: 120'±**

**LENS LENGTH: 50MM**

THIS DOCUMENT IS FOR VISUAL REFERENCE ONLY.  
VISIBILITY MAY VARY DEPENDING ON CONDITIONS, SEASONS, AND VIEWER LOCATION.

**verizon** ✓

118 FLANDERS ROAD  
THIRD FLOOR  
WESTBOROUGH, MA 01581



**ProTerra**  
DESIGN GROUP, LLC

4 Bay Road, Bldg. A Ph: (413)320-4918  
Suite 200  
Hadley, MA 01035

**SOUTH END SC02 MA - LOCATION CODE: 297130**

**POLE LOCATION: 104 E BERKELEY STREET  
SOUTH END NEIGHBORHOOD BOSTON, MA 02118**

**CAMERA LOCATION: 120'±**

**LENS LENGTH: 50MM**

THIS DOCUMENT IS FOR VISUAL REFERENCE ONLY.  
VISIBILITY MAY VARY DEPENDING ON CONDITIONS, SEASONS, AND VIEWER LOCATION.

**verizon**

118 FLANDERS ROAD  
THIRD FLOOR  
WESTBOROUGH, MA 01581



**SOUTH END SC09 MA - LOCATION ID: 312044**  
**POLE LOCATION: 15 MSGR REYNOLDS WAY, POLE ON HARRISON AVENUE**  
**SOUTH END NEIGHBORHOOD BOSTON, MA 02118**  
**CAMERA LOCATION: 95'±**  
**LENS LENGTH: 50MM**

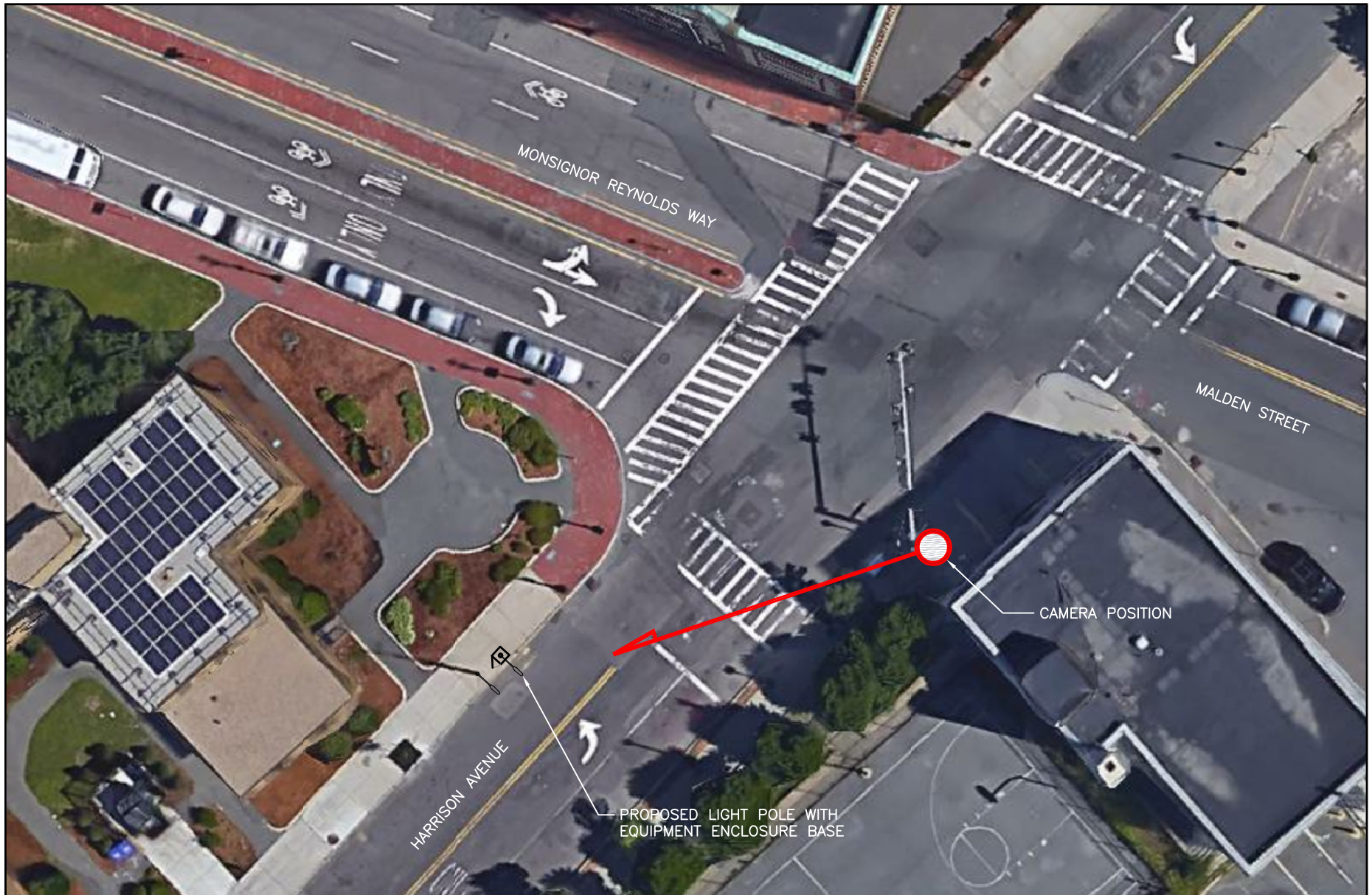
THIS DOCUMENT IS FOR VISUAL REFERENCE ONLY.  
VISIBILITY MAY VARY DEPENDING ON CONDITIONS, SEASONS, AND VIEWER LOCATION.

**ProTerra**  
DESIGN GROUP, LLC

4 Bay Road, Bldg. A Ph: (413)320-4918  
Suite 200  
Hadley, MA 01035

**verizon**✓

118 FLANDERS ROAD  
THIRD FLOOR  
WESTBOROUGH, MA 01581



**ProTerra**  
DESIGN GROUP, LLC

4 Bay Road, Bldg. A Ph: (413)320-4918  
Suite 200  
Hadley, MA 01035

**SOUTH END SC09 MA - LOCATION ID: 312044**  
**POLE LOCATION: 15 MSGR REYNOLDS WAY, POLE ON HARRISON AVENUE**  
**SOUTH END NEIGHBORHOOD BOSTON, MA 02118**  
**CAMERA LOCATION: 95'±**  
**LENS LENGTH: 50MM**

THIS DOCUMENT IS FOR VISUAL REFERENCE ONLY.  
VISIBILITY MAY VARY DEPENDING ON CONDITIONS, SEASONS, AND VIEWER LOCATION.

**verizon**✓

118 FLANDERS ROAD  
THIRD FLOOR  
WESTBOROUGH, MA 01581



**SOUTH END SC09 MA - LOCATION ID: 312044**  
**POLE LOCATION: 15 MSGR REYNOLDS WAY, POLE ON HARRISON AVENUE**  
**SOUTH END NEIGHBORHOOD BOSTON, MA 02118**  
**CAMERA LOCATION: 95'±**  
**LENS LENGTH: 50MM**

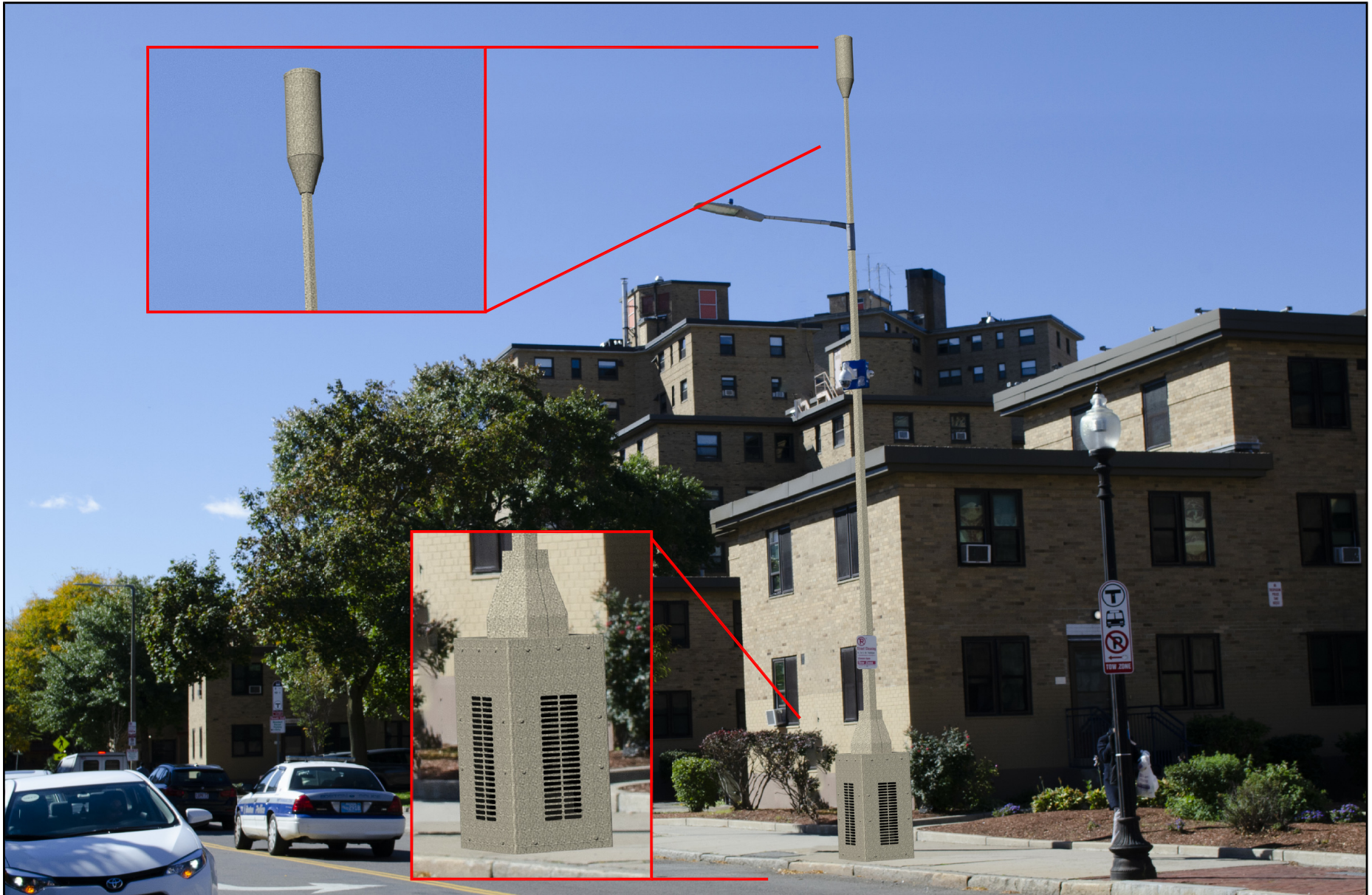
THIS DOCUMENT IS FOR VISUAL REFERENCE ONLY.  
VISIBILITY MAY VARY DEPENDING ON CONDITIONS, SEASONS, AND VIEWER LOCATION.

**ProTerra**  
DESIGN GROUP, LLC

4 Bay Road, Bldg. A Ph: (413)320-4918  
Suite 200  
Hadley, MA 01035

**verizon**✓

118 FLANDERS ROAD  
THIRD FLOOR  
WESTBOROUGH, MA 01581



**SOUTH END SC09 MA - LOCATION ID: 312044**  
**POLE LOCATION: 15 MSGR REYNOLDS WAY, POLE ON HARRISON AVENUE**  
**SOUTH END NEIGHBORHOOD BOSTON, MA 02118**  
**CAMERA LOCATION: 95'±**  
**LENS LENGTH: 50MM**

THIS DOCUMENT IS FOR VISUAL REFERENCE ONLY.  
 VISIBILITY MAY VARY DEPENDING ON CONDITIONS, SEASONS, AND VIEWER LOCATION.

**ProTerra**  
 DESIGN GROUP, LLC

4 Bay Road, Bldg. A Ph: (413)320-4918  
 Suite 200  
 Hadley, MA 01035

**verizon**

118 FLANDERS ROAD  
 THIRD FLOOR  
 WESTBOROUGH, MA 01581





**ProTerra**  
DESIGN GROUP, LLC

4 Bay Road, Bldg. A Ph: (413)320-4918  
Suite 200  
Hadley, MA 01035

**BOS MED CTR SC11 MA LOCATION ID: 433607**  
**POLE LOCATION: CORNER MASSACHUSETTS AVENUE AND ALBANY STREET**  
**SOUTH END NEIGHBORHOOD BOSTON, MA 02118**

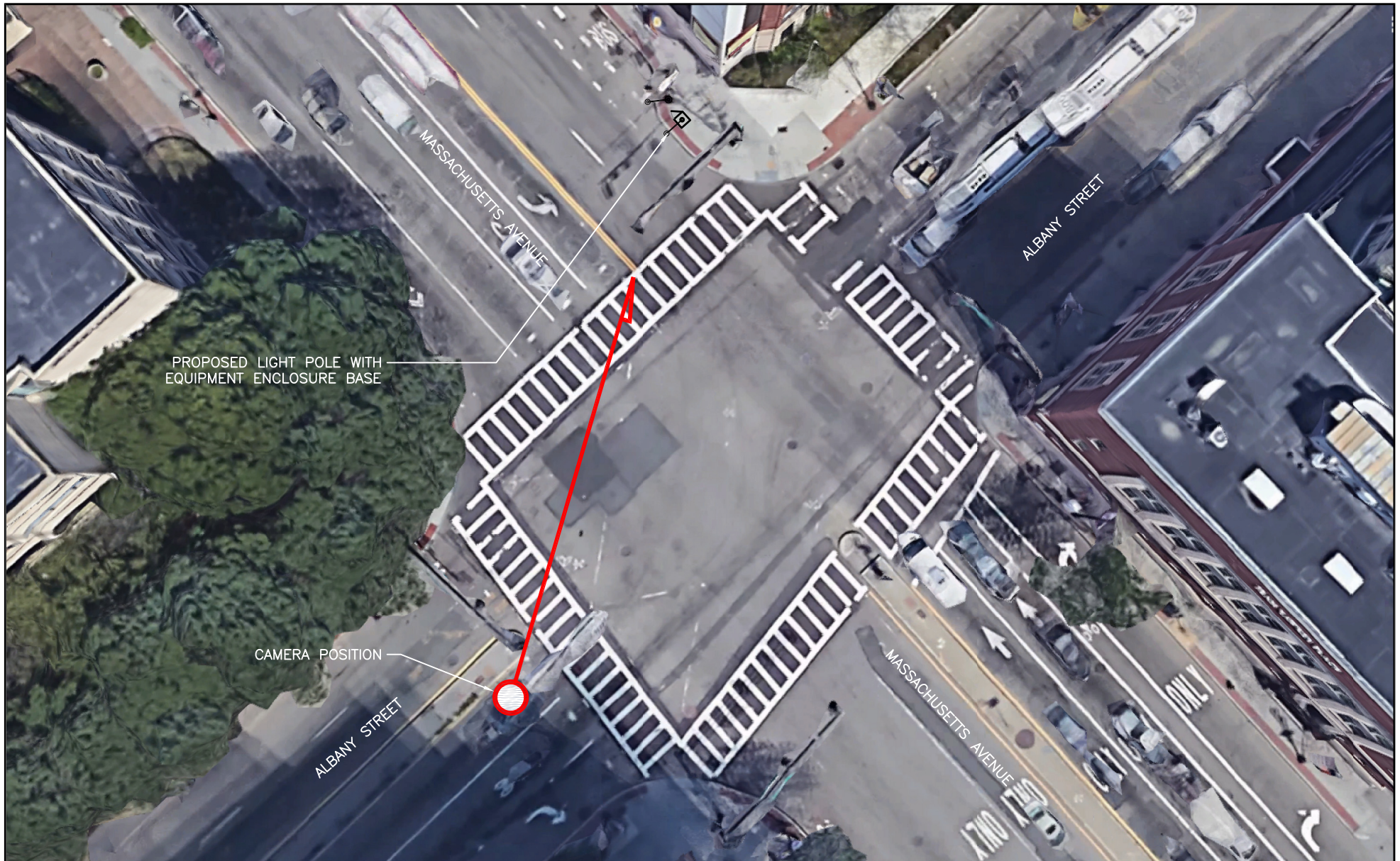
**CAMERA LOCATION: 155'±**

**LENS LENGTH: 50MM**

THIS DOCUMENT IS FOR VISUAL REFERENCE ONLY.  
VISIBILITY MAY VARY DEPENDING ON CONDITIONS, SEASONS, AND VIEWER LOCATION.

**verizon**✓

118 FLANDERS ROAD  
THIRD FLOOR  
WESTBOROUGH, MA 01581



**ProTerra**  
DESIGN GROUP, LLC

4 Bay Road, Bldg. A Ph: (413)320-4918  
Suite 200  
Hadley, MA 01035

**BOS MED CTR SC11 MA LOCATION ID: 433607**  
**POLE LOCATION: CORNER MASSACHUSETTS AVENUE AND ALBANY STREET**  
**SOUTH END NEIGHBORHOOD BOSTON, MA 02118**  
**CAMERA LOCATION: 155'±**

**LENS LENGTH: 50MM**

THIS DOCUMENT IS FOR VISUAL REFERENCE ONLY.  
VISIBILITY MAY VARY DEPENDING ON CONDITIONS, SEASONS, AND VIEWER LOCATION.

**verizon**✓

118 FLANDERS ROAD  
THIRD FLOOR  
WESTBOROUGH, MA 01581



**ProTerra**  
DESIGN GROUP, LLC

4 Bay Road, Bldg. A Ph: (413)320-4918  
Suite 200  
Hadley, MA 01035

**BOS MED CTR SC11 MA LOCATION ID: 433607**  
**POLE LOCATION: CORNER MASSACHUSETTS AVENUE AND ALBANY STREET**  
**SOUTH END NEIGHBORHOOD BOSTON, MA 02118**

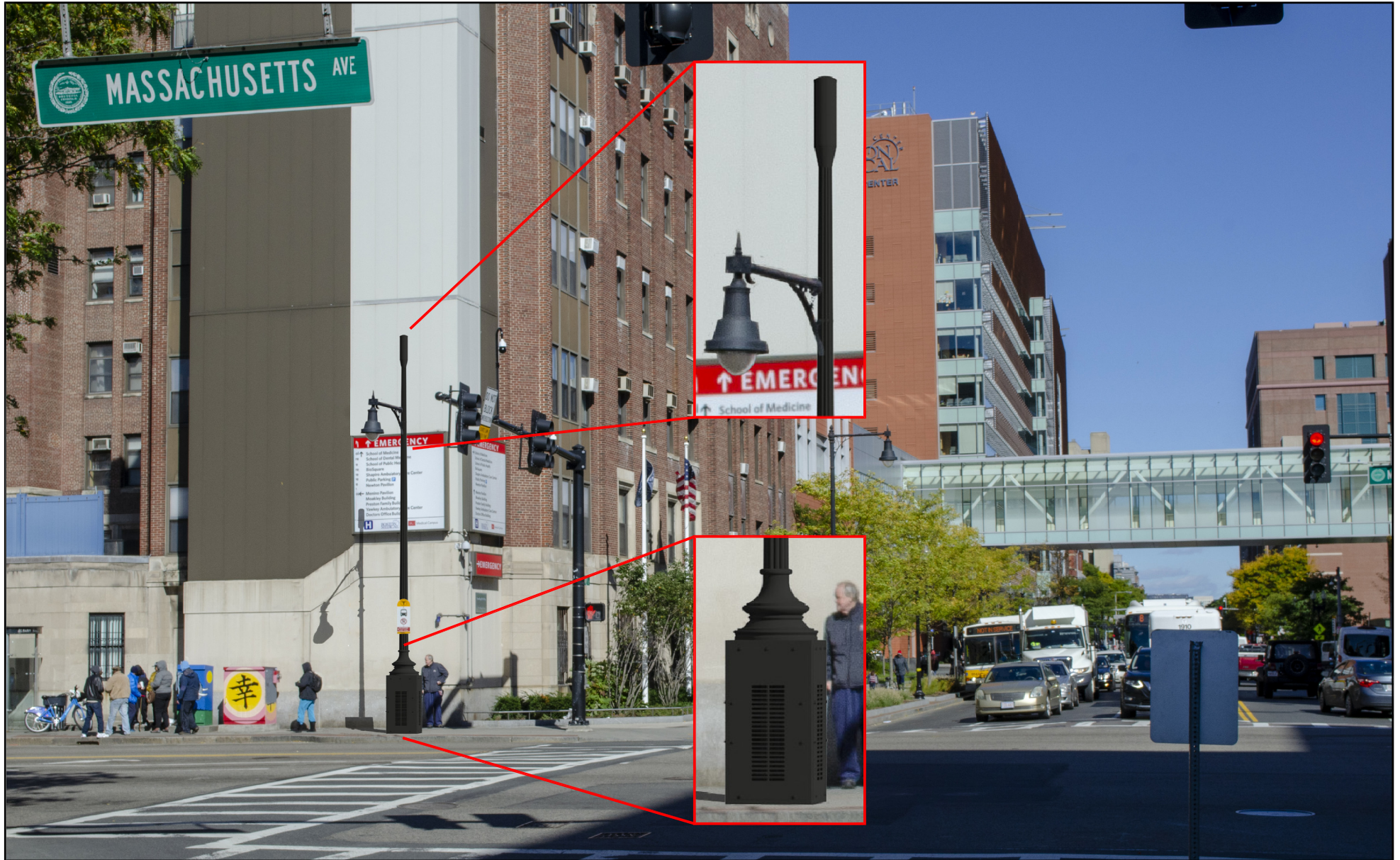
**CAMERA LOCATION: 155'±**

**LENS LENGTH: 50MM**

THIS DOCUMENT IS FOR VISUAL REFERENCE ONLY.  
VISIBILITY MAY VARY DEPENDING ON CONDITIONS, SEASONS, AND VIEWER LOCATION.

**verizon**

118 FLANDERS ROAD  
THIRD FLOOR  
WESTBOROUGH, MA 01581



**ProTerra**  
DESIGN GROUP, LLC

4 Bay Road, Bldg. A Ph: (413)320-4918  
Suite 200  
Hadley, MA 01035

**BOS MED CTR SC11 MA LOCATION ID: 433607**  
**POLE LOCATION: CORNER MASSACHUSETTS AVENUE AND ALBANY STREET**  
**SOUTH END NEIGHBORHOOD BOSTON, MA 02118**  
**CAMERA LOCATION: 155'±**

**LENS LENGTH: 50MM**

THIS DOCUMENT IS FOR VISUAL REFERENCE ONLY.  
VISIBILITY MAY VARY DEPENDING ON CONDITIONS, SEASONS, AND VIEWER LOCATION.

**verizon**

118 FLANDERS ROAD  
THIRD FLOOR  
WESTBOROUGH, MA 01581



**ProTerra**  
DESIGN GROUP, LLC

4 Bay Road, Bldg. A Ph: (413)320-4918  
Suite 200  
Hadley, MA 01035

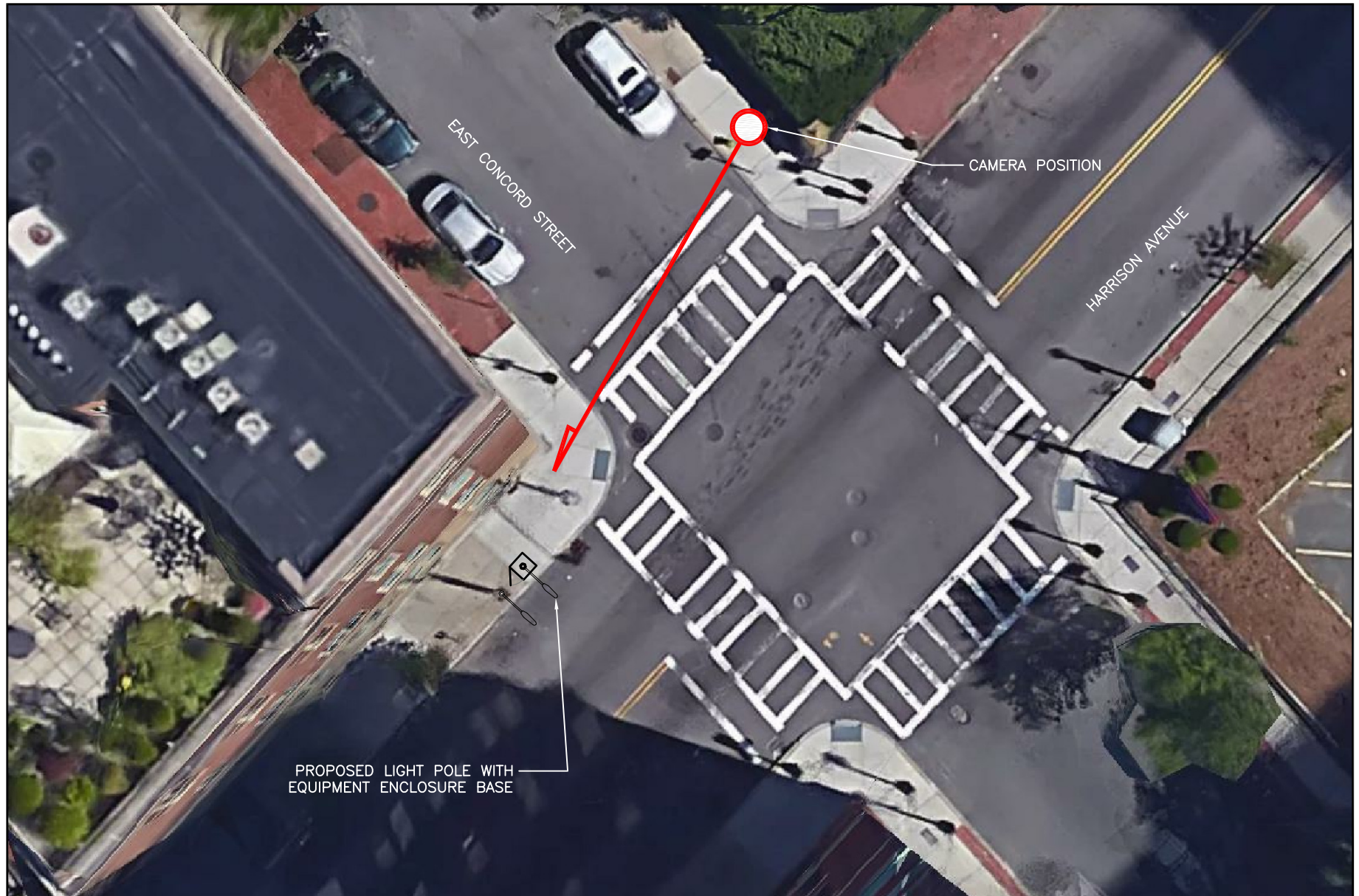
**BOS MED CTR SC14 MA - LOCATION ID: 433610**  
**POLE LOCATION: 57 E. CONCORD STREET POLE ON HARRISON AVENUE**  
**SOUTH END NEIGHBORHOOD BOSTON, MA 02118**  
**CAMERA LOCATION: 75'±**  
**LENS LENGTH: 50MM**

THIS DOCUMENT IS FOR VISUAL REFERENCE ONLY.  
VISIBILITY MAY VARY DEPENDING ON CONDITIONS, SEASONS, AND VIEWER LOCATION.

**verizon**✓

118 FLANDERS ROAD  
THIRD FLOOR  
WESTBOROUGH, MA 01581

# PHOTO LOCATION MAP



**ProTerra**  
DESIGN GROUP, LLC

4 Bay Road, Bldg. A Ph: (413)320-4918  
Suite 200  
Hadley, MA 01035

**BOS MED CTR SC14 MA - LOCATION ID: 433610**  
**POLE LOCATION: 57 E. CONCORD STREET POLE ON HARRISON AVENUE**  
**SOUTH END NEIGHBORHOOD BOSTON, MA 02118**  
**CAMERA LOCATION: 75'±**  
**LENS LENGTH: 50MM**

THIS DOCUMENT IS FOR VISUAL REFERENCE ONLY.  
VISIBILITY MAY VARY DEPENDING ON CONDITIONS, SEASONS, AND VIEWER LOCATION.

**verizon**✓

118 FLANDERS ROAD  
THIRD FLOOR  
WESTBOROUGH, MA 01581



**ProTerra**  
DESIGN GROUP, LLC

4 Bay Road, Bldg. A Ph: (413)320-4918  
Suite 200  
Hadley, MA 01035

**BOS MED CTR SC14 MA - LOCATION ID: 433610**  
**POLE LOCATION: 57 E. CONCORD STREET POLE ON HARRISON AVENUE**  
**SOUTH END NEIGHBORHOOD BOSTON, MA 02118**  
**CAMERA LOCATION: 75'±**  
**LENS LENGTH: 50MM**

THIS DOCUMENT IS FOR VISUAL REFERENCE ONLY.  
VISIBILITY MAY VARY DEPENDING ON CONDITIONS, SEASONS, AND VIEWER LOCATION.

**verizon**✓

118 FLANDERS ROAD  
THIRD FLOOR  
WESTBOROUGH, MA 01581



**ProTerra**  
DESIGN GROUP, LLC

4 Bay Road, Bldg. A Ph: (413)320-4918  
Suite 200  
Hadley, MA 01035

**BOS MED CTR SC14 MA - LOCATION ID: 433610**  
**POLE LOCATION: 57 E. CONCORD STREET POLE ON HARRISON AVENUE**  
**SOUTH END NEIGHBORHOOD BOSTON, MA 02118**  
**CAMERA LOCATION: 75'±**  
**LENS LENGTH: 50MM**

THIS DOCUMENT IS FOR VISUAL REFERENCE ONLY.  
VISIBILITY MAY VARY DEPENDING ON CONDITIONS, SEASONS, AND VIEWER LOCATION.

**verizon**✓

118 FLANDERS ROAD  
THIRD FLOOR  
WESTBOROUGH, MA 01581





**ProTerra**  
DESIGN GROUP, LLC

4 Bay Road, Bldg. A Ph: (413)320-4918  
Suite 200  
Hadley, MA 01035

**BOS MED CTR SC16 MA - LOCATION ID: 433612**  
**POLE LOCATION: 15 MSGR. REYNOLDS WAY, POLE ON HARRISON AVENUE**  
**SOUTH END NEIGHBORHOOD BOSTON, MA 02118**  
**CAMERA LOCATION: 100'±**

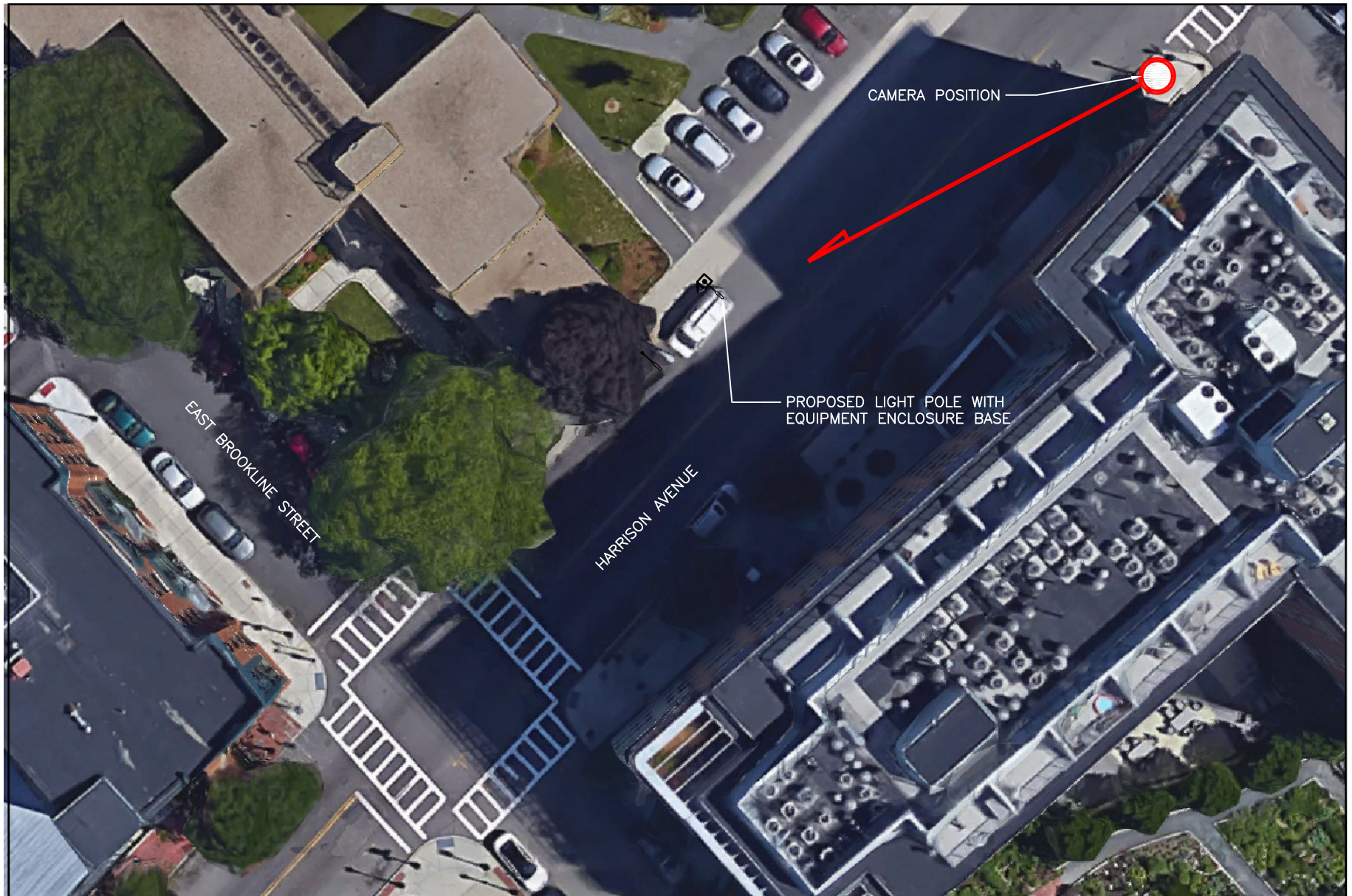
**LENS LENGTH: 50MM**

THIS DOCUMENT IS FOR VISUAL REFERENCE ONLY.  
VISIBILITY MAY VARY DEPENDING ON CONDITIONS, SEASONS, AND VIEWER LOCATION.

**verizon**✓

118 FLANDERS ROAD  
THIRD FLOOR  
WESTBOROUGH, MA 01581

# PHOTO LOCATION MAP



**ProTerra**  
DESIGN GROUP, LLC

4 Bay Road, Bldg. A Ph: (413)320-4918  
Suite 200  
Hadley, MA 01035

**BOS MED CTR SC16 MA - LOCATION ID: 433612**  
POLE LOCATION: 15 MSGR. REYNOLDS WAY, POLE ON HARRISON AVENUE  
SOUTH END NEIGHBORHOOD BOSTON, MA 02118  
CAMERA LOCATION: 100'±

**LENS LENGTH: 50MM**

THIS DOCUMENT IS FOR VISUAL REFERENCE ONLY.  
VISIBILITY MAY VARY DEPENDING ON CONDITIONS, SEASONS, AND VIEWER LOCATION.

**verizon** ✓

118 FLANDERS ROAD  
THIRD FLOOR  
WESTBOROUGH, MA 01581



**ProTerra**  
DESIGN GROUP, LLC

4 Bay Road, Bldg. A Ph: (413)320-4918  
Suite 200  
Hadley, MA 01035

**BOS MED CTR SC16 MA - LOCATION ID: 433612**  
**POLE LOCATION: 15 MSGR. REYNOLDS WAY, POLE ON HARRISON AVENUE**  
**SOUTH END NEIGHBORHOOD BOSTON, MA 02118**  
**CAMERA LOCATION: 100'±**

**LENS LENGTH: 50MM**

THIS DOCUMENT IS FOR VISUAL REFERENCE ONLY.  
VISIBILITY MAY VARY DEPENDING ON CONDITIONS, SEASONS, AND VIEWER LOCATION.

**verizon**✓

118 FLANDERS ROAD  
THIRD FLOOR  
WESTBOROUGH, MA 01581



**ProTerra**  
DESIGN GROUP, LLC

4 Bay Road, Bldg. A Ph: (413)320-4918  
Suite 200  
Hadley, MA 01035

**BOS MED CTR SC16 MA - LOCATION ID: 433612**  
**POLE LOCATION: 15 MSGR. REYNOLDS WAY, POLE ON HARRISON AVENUE**  
**SOUTH END NEIGHBORHOOD BOSTON, MA 02118**  
**CAMERA LOCATION: 100'±**

**LENS LENGTH: 50MM**

THIS DOCUMENT IS FOR VISUAL REFERENCE ONLY.  
VISIBILITY MAY VARY DEPENDING ON CONDITIONS, SEASONS, AND VIEWER LOCATION.

**verizon**✓

118 FLANDERS ROAD  
THIRD FLOOR  
WESTBOROUGH, MA 01581



**ProTerra**  
DESIGN GROUP, LLC

4 Bay Road, Bldg. A Ph: (413)320-4918  
Suite 200  
Hadley, MA 01035

**BOS MED CTR SC17 MA - LOCATION ID: 433613**

POLE LOCATION: ALBANY STREET  
SOUTH END NEIGHBORHOOD BOSTON, MA 02118

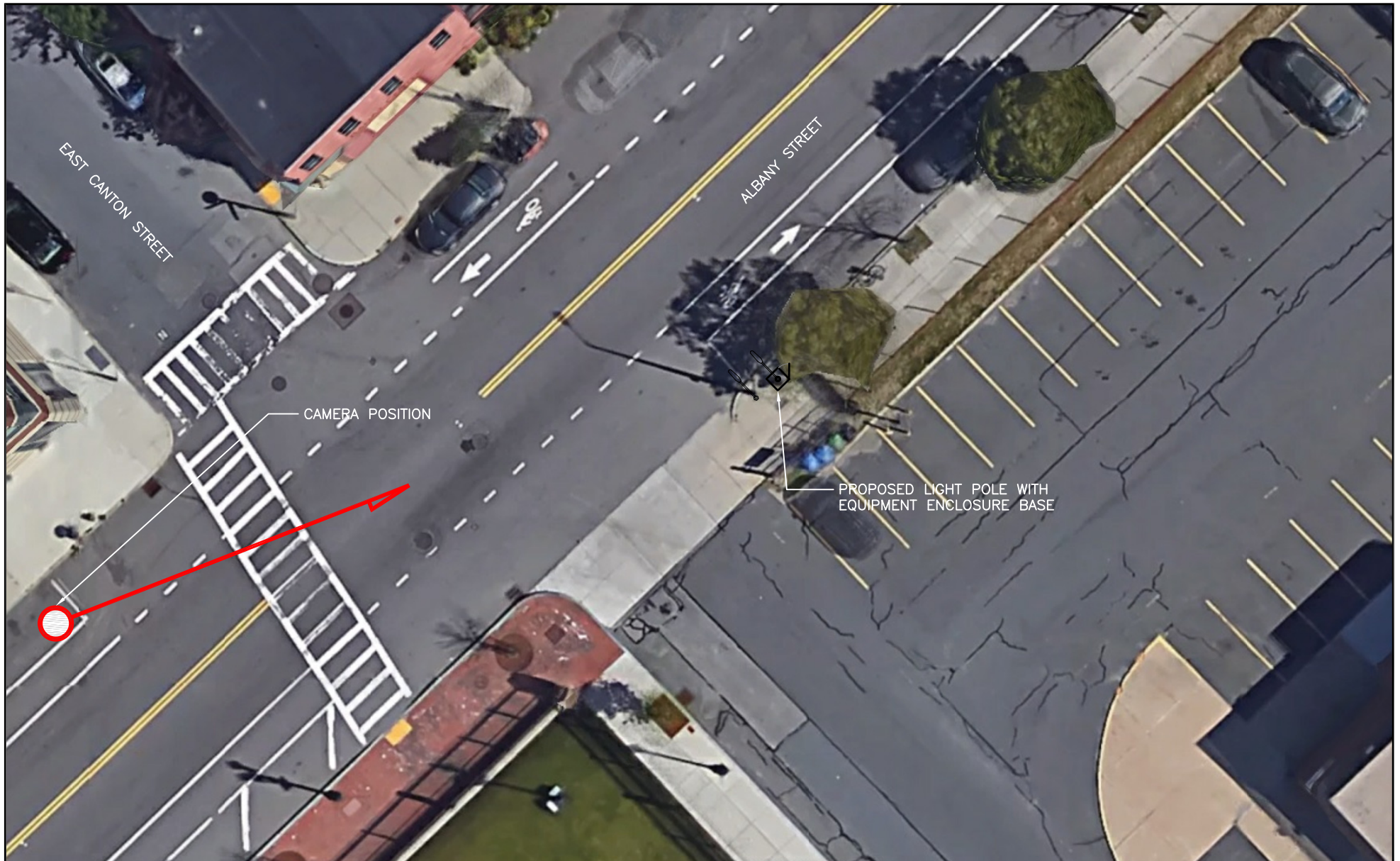
CAMERA LOCATION: 140'±

LENS LENGTH: 50MM

THIS DOCUMENT IS FOR VISUAL REFERENCE ONLY.  
VISIBILITY MAY VARY DEPENDING ON CONDITIONS, SEASONS, AND VIEWER LOCATION.

**verizon**✓

118 FLANDERS ROAD  
THIRD FLOOR  
WESTBOROUGH, MA 01581



**ProTerra**  
DESIGN GROUP, LLC

4 Bay Road, Bldg. A Ph: (413)320-4918  
Suite 200  
Hadley, MA 01035

**BOS MED CTR SC17 MA - LOCATION ID: 433613**

**POLE LOCATION: ALBANY STREET**  
**SOUTH END NEIGHBORHOOD BOSTON, MA 02118**

**CAMERA LOCATION: 140'±**

**LENS LENGTH: 50MM**

THIS DOCUMENT IS FOR VISUAL REFERENCE ONLY.  
VISIBILITY MAY VARY DEPENDING ON CONDITIONS, SEASONS, AND VIEWER LOCATION.

**verizon**

118 FLANDERS ROAD  
THIRD FLOOR  
WESTBOROUGH, MA 01581



**ProTerra**  
DESIGN GROUP, LLC

4 Bay Road, Bldg. A Ph: (413)320-4918  
Suite 200  
Hadley, MA 01035

**BOS MED CTR SC17 MA - LOCATION ID: 433613**

POLE LOCATION: ALBANY STREET  
SOUTH END NEIGHBORHOOD BOSTON, MA 02118

CAMERA LOCATION: 140'±

**LENS LENGTH: 50MM**

THIS DOCUMENT IS FOR VISUAL REFERENCE ONLY.  
VISIBILITY MAY VARY DEPENDING ON CONDITIONS, SEASONS, AND VIEWER LOCATION.

**verizon**✓

118 FLANDERS ROAD  
THIRD FLOOR  
WESTBOROUGH, MA 01581



**ProTerra**  
DESIGN GROUP, LLC

4 Bay Road, Bldg. A Ph: (413)320-4918  
Suite 200  
Hadley, MA 01035

**BOS MED CTR SC17 MA - LOCATION ID: 433613**

POLE LOCATION: ALBANY STREET  
SOUTH END NEIGHBORHOOD BOSTON, MA 02118

CAMERA LOCATION: 140'±

**LENS LENGTH: 50MM**

THIS DOCUMENT IS FOR VISUAL REFERENCE ONLY.  
VISIBILITY MAY VARY DEPENDING ON CONDITIONS, SEASONS, AND VIEWER LOCATION.

**verizon**✓

118 FLANDERS ROAD  
THIRD FLOOR  
WESTBOROUGH, MA 01581





**ProTerra**  
DESIGN GROUP, LLC

4 Bay Road, Bldg. A Ph: (413)320-4918  
Suite 200  
Hadley, MA 01035

**SOUTH END SC21 MA - LOCATION ID: 433626**

POLE LOCATION: 1762 WASHINGTON STREET  
ROXBURY NEIGHBORHOOD BOSTON, MA 02118

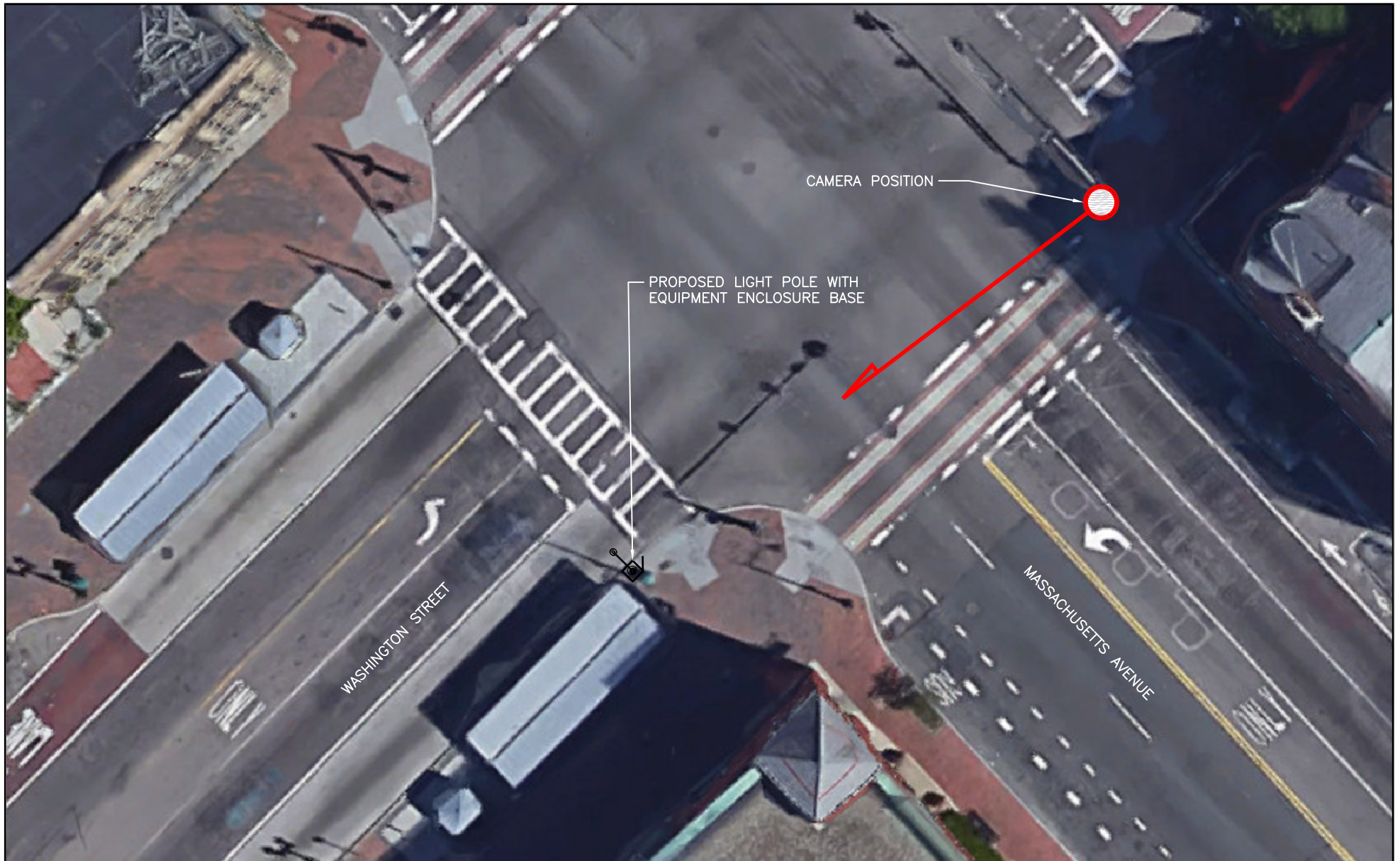
CAMERA LOCATION: 100'±

LENS LENGTH: 50MM

THIS DOCUMENT IS FOR VISUAL REFERENCE ONLY.  
VISIBILITY MAY VARY DEPENDING ON CONDITIONS, SEASONS, AND VIEWER LOCATION.

**verizon**✓

118 FLANDERS ROAD  
THIRD FLOOR  
WESTBOROUGH, MA 01581



**ProTerra**  
DESIGN GROUP, LLC

4 Bay Road, Bldg. A Ph: (413)320-4918  
Suite 200  
Hadley, MA 01035

**SOUTH END SC21 MA - LOCATION ID: 433626**

**POLE LOCATION: 1762 WASHINGTON STREET  
ROXBURY NEIGHBORHOOD BOSTON, MA 02118**

**CAMERA LOCATION: 100'±**

**LENS LENGTH: 50MM**

THIS DOCUMENT IS FOR VISUAL REFERENCE ONLY.  
VISIBILITY MAY VARY DEPENDING ON CONDITIONS, SEASONS, AND VIEWER LOCATION.

**verizon**✓

118 FLANDERS ROAD  
THIRD FLOOR  
WESTBOROUGH, MA 01581



**ProTerra**  
DESIGN GROUP, LLC

4 Bay Road, Bldg. A Ph: (413)320-4918  
Suite 200  
Hadley, MA 01035

**SOUTH END SC21 MA - LOCATION ID: 433626**

**POLE LOCATION: 1762 WASHINGTON STREET  
ROXBURY NEIGHBORHOOD BOSTON, MA 02118**

**CAMERA LOCATION: 100'±**

**LENS LENGTH: 50MM**

THIS DOCUMENT IS FOR VISUAL REFERENCE ONLY.  
VISIBILITY MAY VARY DEPENDING ON CONDITIONS, SEASONS, AND VIEWER LOCATION.

**verizon**✓

118 FLANDERS ROAD  
THIRD FLOOR  
WESTBOROUGH, MA 01581



**ProTerra**  
DESIGN GROUP, LLC

4 Bay Road, Bldg. A Ph: (413)320-4918  
Suite 200  
Hadley, MA 01035

**SOUTH END SC21 MA - LOCATION ID: 433626**

**POLE LOCATION: 1762 WASHINGTON STREET  
ROXBURY NEIGHBORHOOD BOSTON, MA 02118**

**CAMERA LOCATION: 100'±**

**LENS LENGTH: 50MM**

THIS DOCUMENT IS FOR VISUAL REFERENCE ONLY.  
VISIBILITY MAY VARY DEPENDING ON CONDITIONS, SEASONS, AND VIEWER LOCATION.

**verizon**

118 FLANDERS ROAD  
THIRD FLOOR  
WESTBOROUGH, MA 01581



**SOUTH END SC23 MA - LOCATION ID: 433628**

**POLE LOCATION: 631 MASSACHUSETTS AVENUE, POLE ON WASHINGTON STREET  
ROXBURY NEIGHBORHOOD BOSTON, MA 02118**

**CAMERA LOCATION: 100'±**

**LENS LENGTH: 50MM**

**THIS DOCUMENT IS FOR VISUAL REFERENCE ONLY.  
VISIBILITY MAY VARY DEPENDING ON CONDITIONS, SEASONS, AND VIEWER LOCATION.**

**ProTerra**  
DESIGN GROUP, LLC

4 Bay Road, Bldg. A Ph:(413)320-4918  
Suite 200  
Hadley, MA 01035

**verizon**✓

118 FLANDERS ROAD  
THIRD FLOOR  
WESTBOROUGH, MA 01581



**ProTerra**  
DESIGN GROUP, LLC

4 Bay Road, Bldg. A Ph: (413)320-4918  
Suite 200  
Hadley, MA 01035

**SOUTH END SC23 MA - LOCATION ID: 433628**  
**POLE LOCATION: 631 MASSACHUSETTS AVENUE, POLE ON WASHINGTON STREET**  
**ROXBURY NEIGHBORHOOD BOSTON, MA 02118**  
**CAMERA LOCATION: 100'±**  
**LENS LENGTH: 50MM**

THIS DOCUMENT IS FOR VISUAL REFERENCE ONLY.  
VISIBILITY MAY VARY DEPENDING ON CONDITIONS, SEASONS, AND VIEWER LOCATION.

**verizon**✓

118 FLANDERS ROAD  
THIRD FLOOR  
WESTBOROUGH, MA 01581



**SOUTH END SC23 MA - LOCATION ID: 433628**

**POLE LOCATION: 631 MASSACHUSETTS AVENUE, POLE ON WASHINGTON STREET  
ROXBURY NEIGHBORHOOD BOSTON, MA 02118**

**CAMERA LOCATION: 100'±**

**LENS LENGTH: 50MM**

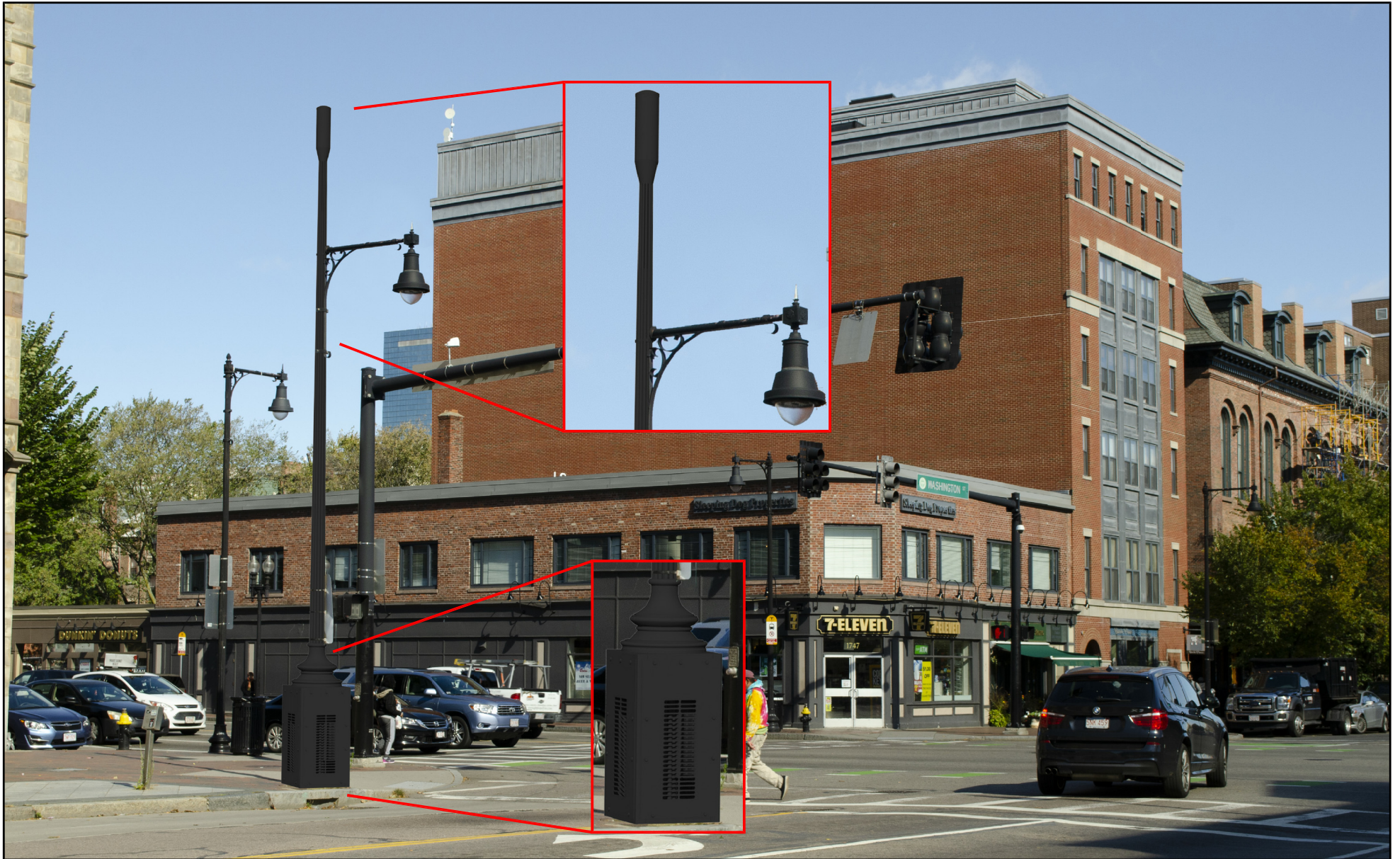
**THIS DOCUMENT IS FOR VISUAL REFERENCE ONLY.  
VISIBILITY MAY VARY DEPENDING ON CONDITIONS, SEASONS, AND VIEWER LOCATION.**

**ProTerra**  
DESIGN GROUP, LLC

4 Bay Road, Bldg. A Ph:(413)320-4918  
Suite 200  
Hadley, MA 01035

**verizon**✓

118 FLANDERS ROAD  
THIRD FLOOR  
WESTBOROUGH, MA 01581



**SOUTH END SC23 MA - LOCATION ID: 433628**

**POLE LOCATION: 631 MASSACHUSETTS AVENUE, POLE ON WASHINGTON STREET  
ROXBURY NEIGHBORHOOD BOSTON, MA 02118**

**CAMERA LOCATION: 100'±**

**LENS LENGTH: 50MM**

THIS DOCUMENT IS FOR VISUAL REFERENCE ONLY.  
VISIBILITY MAY VARY DEPENDING ON CONDITIONS, SEASONS, AND VIEWER LOCATION.

**ProTerra**  
DESIGN GROUP, LLC

4 Bay Road, Bldg. A Ph:(413)320-4918  
Suite 200  
Hadley, MA 01035

**verizon**✓

118 FLANDERS ROAD  
THIRD FLOOR  
WESTBOROUGH, MA 01581