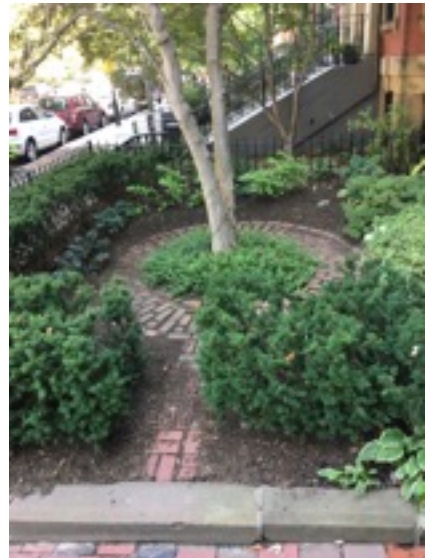


Why it may not make sense to replace the tree that has died.

Planting a new tree now would require the removal of our healthy, established hedge, in order to make room for a stump grinder. The stump will rot away naturally in 3 years, using a technique recommended by our arborist, so we have time to consider whether a new tree makes sense. There is a strong case for not replacing it.



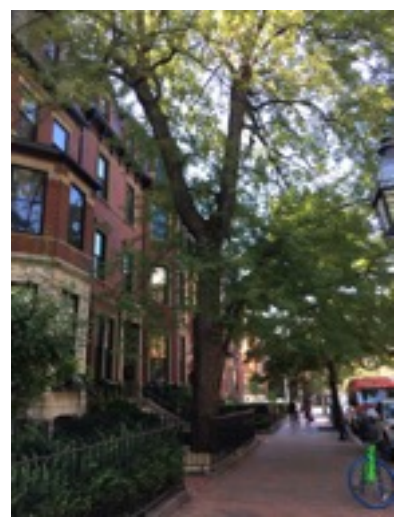
I planted the magnolia that has died 30 years ago. It never did well and barely flowered, because our garden is overshadowed by enormous street trees on either side of us, which block all the sun and take much of the water.



60' street tree in front of us



roots of tree in front of us



65' tree 3 bldgs to left of us

The neighboring building at 80 Marlborough, which appears as a companion to ours, does not have a tree but only large (unruly) scrubs. We will present more of a symmetrical appearance without the tree.



Many gardens in our immediate neighborhood have central plantings with or without urns that look traditional.

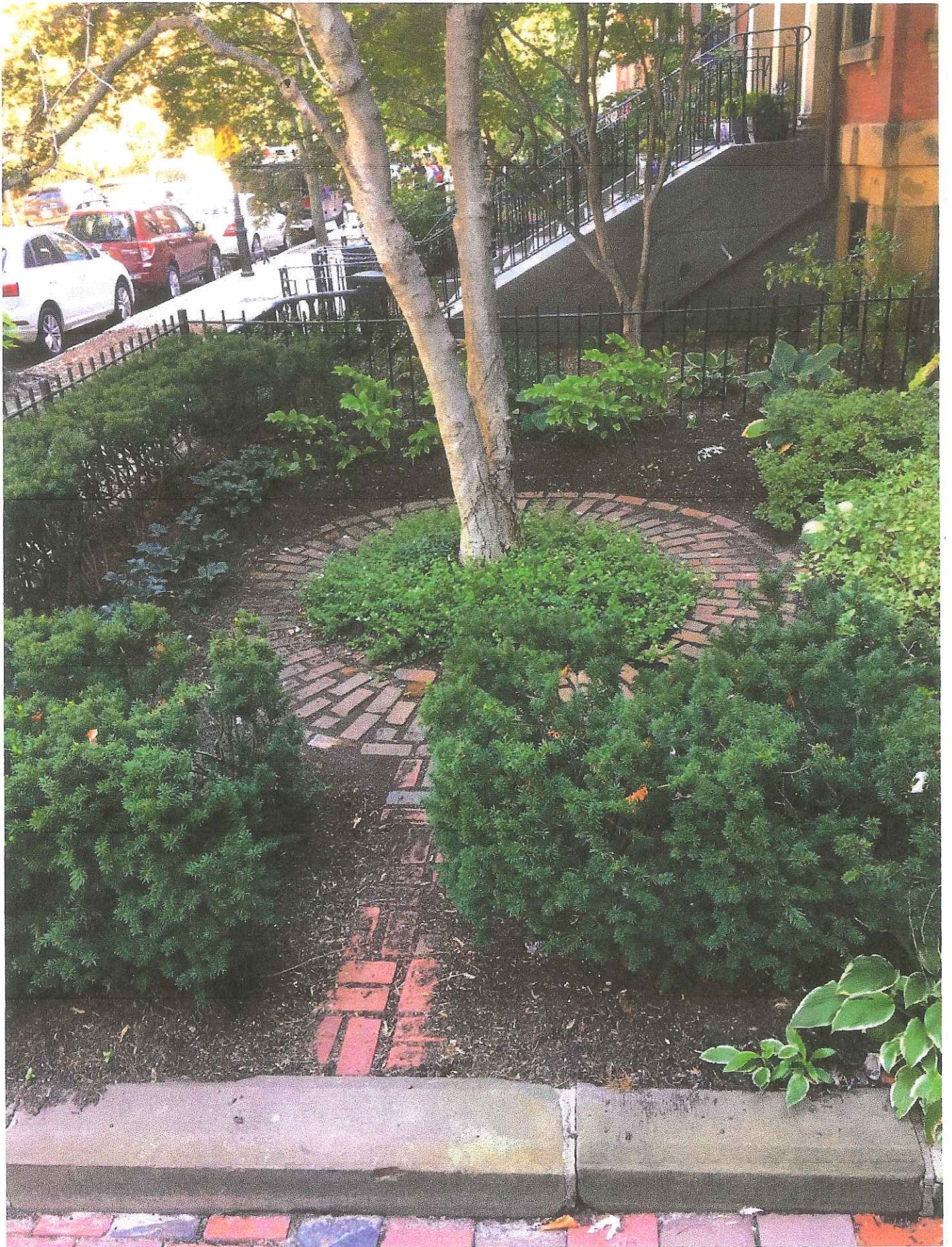
60' street tree in front of us

roots of tree in front of us

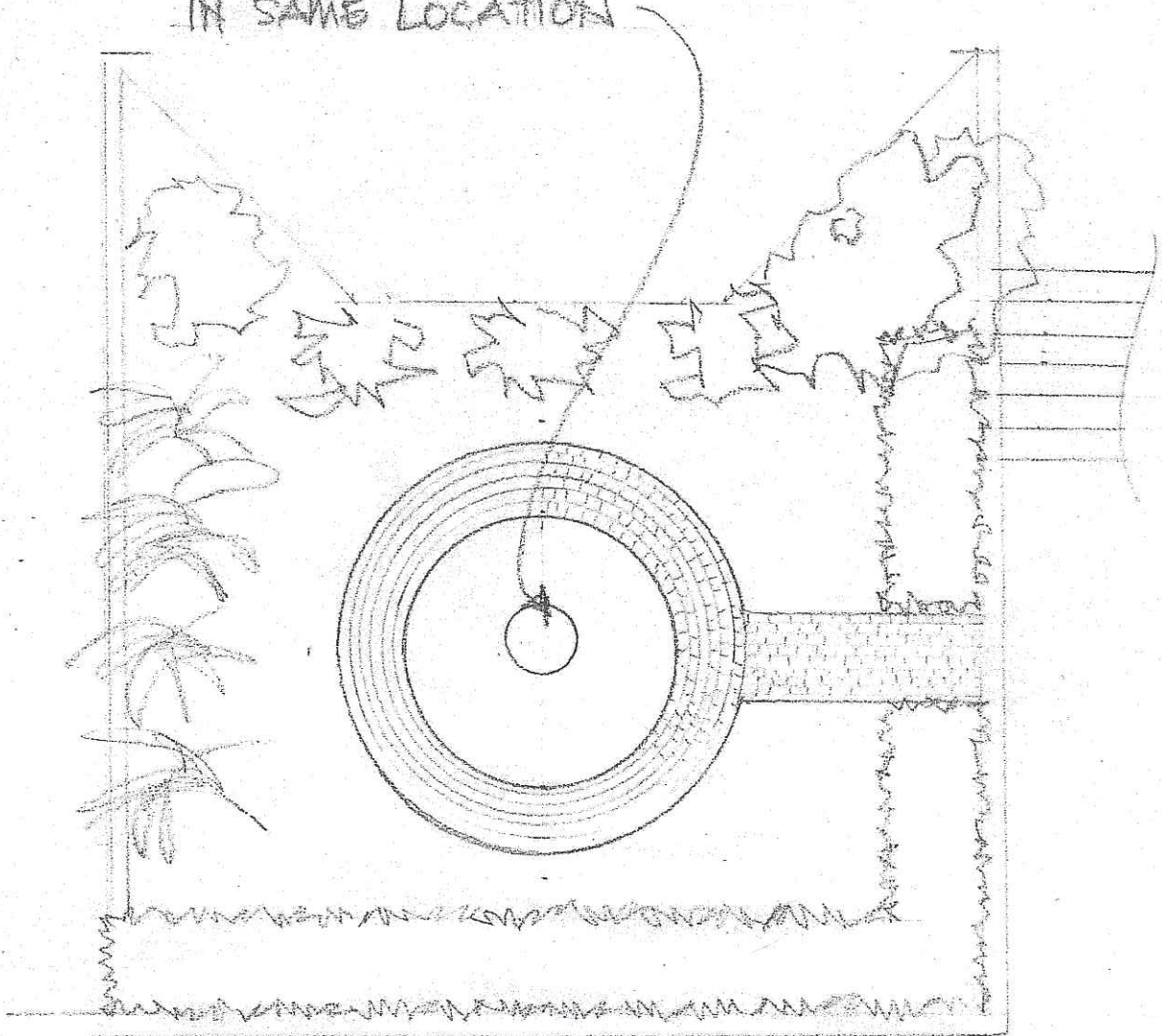
65' tree 3 bdgs to left of us







REQUEST TO REPLACE DEAD TREE
WITH FLOWERING SHRUBS
IN SAME LOCATION



82 MARLBOROUGH STREET GARDEN