

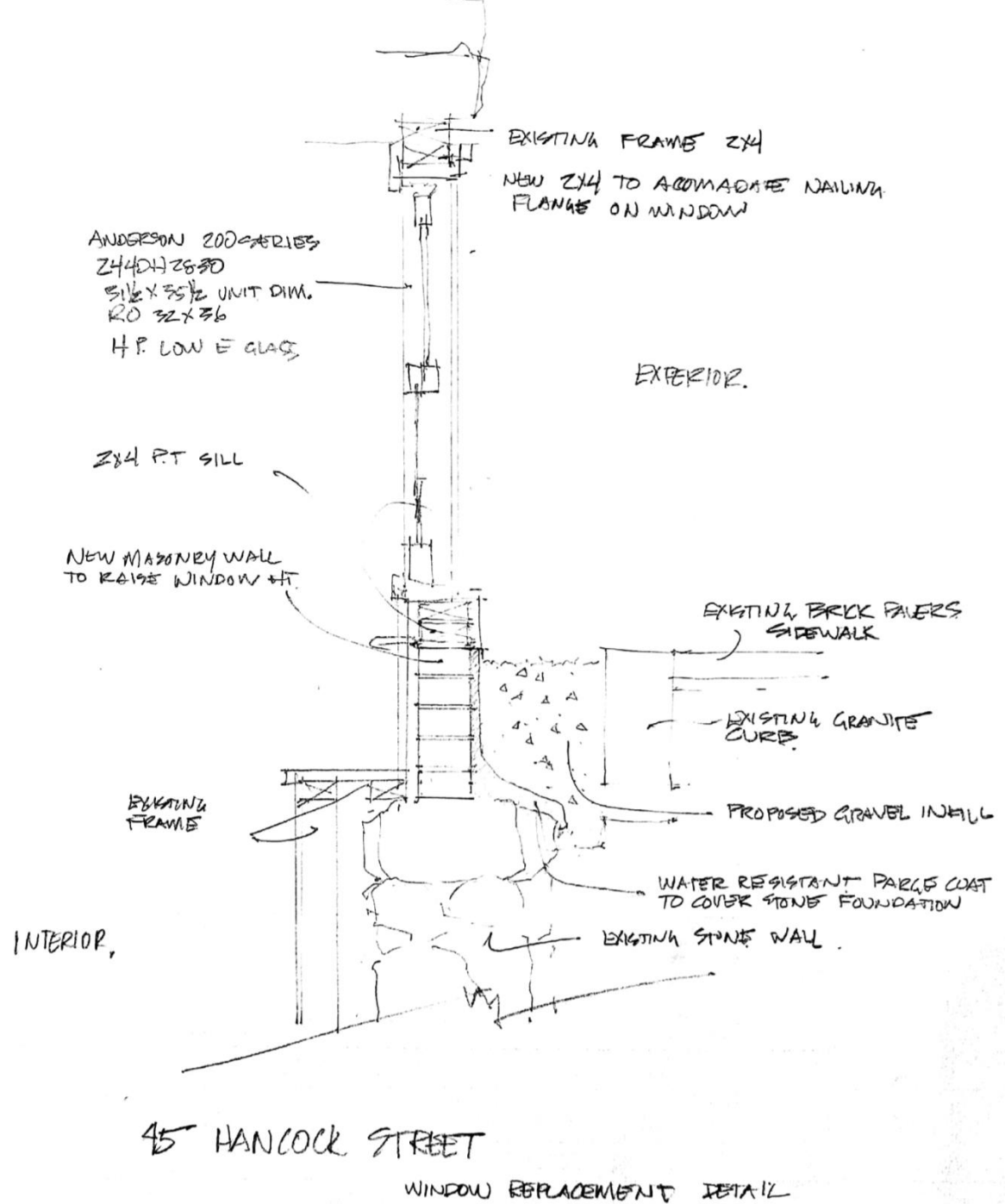
## 45A Hancock

Proposed Work: At front façade raise height of lower level windows to above sidewalk level, install new window sash, frames and trim, eliminate window wells, and continue sidewalk to foundation. The reason for this project is to stop water from entering the unit and the basement from the window wells and instead having the water flow on the sidewalk.

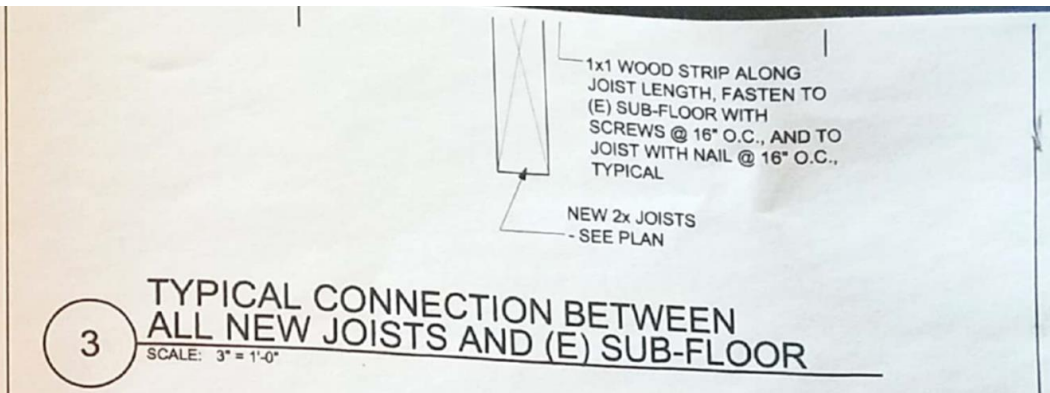
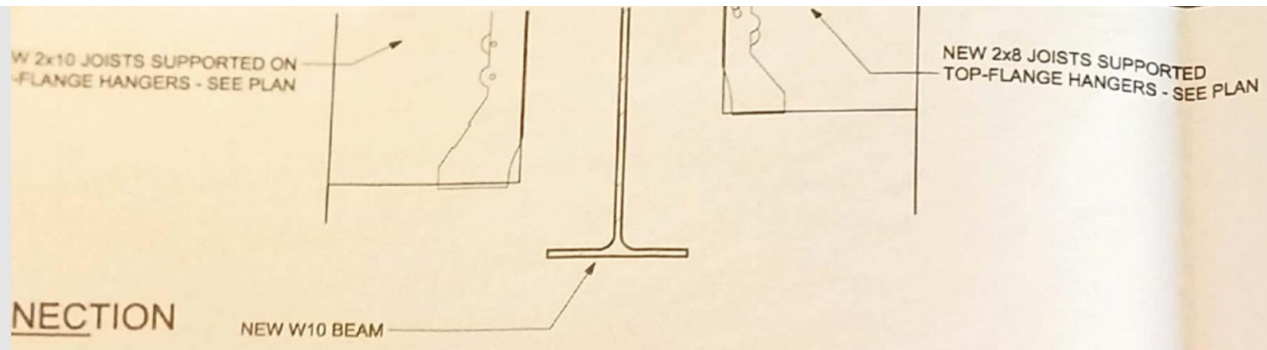


(image from 2016)







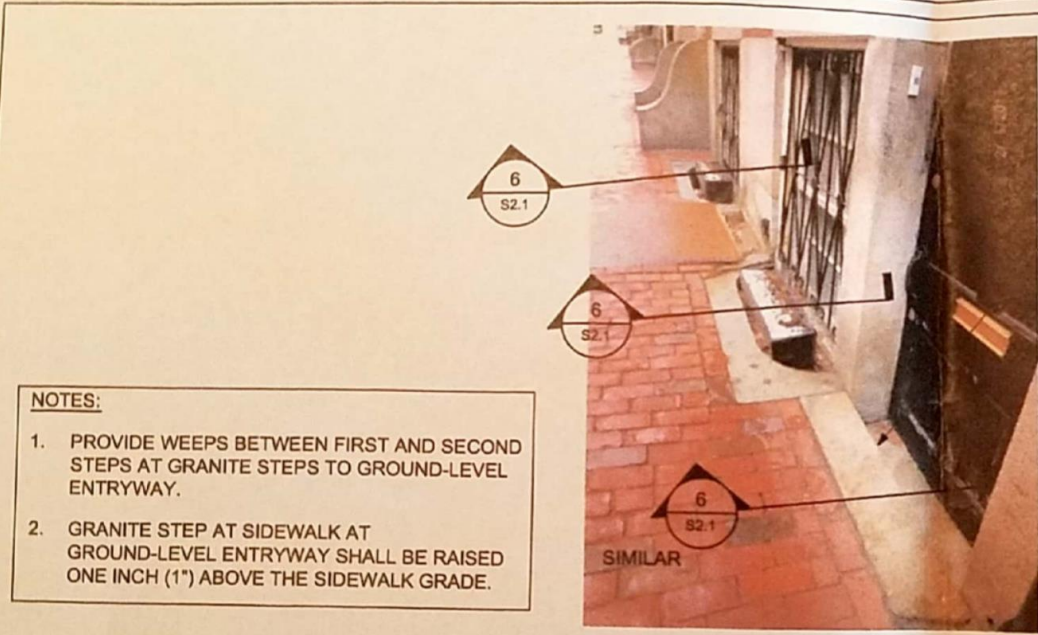


SECTION

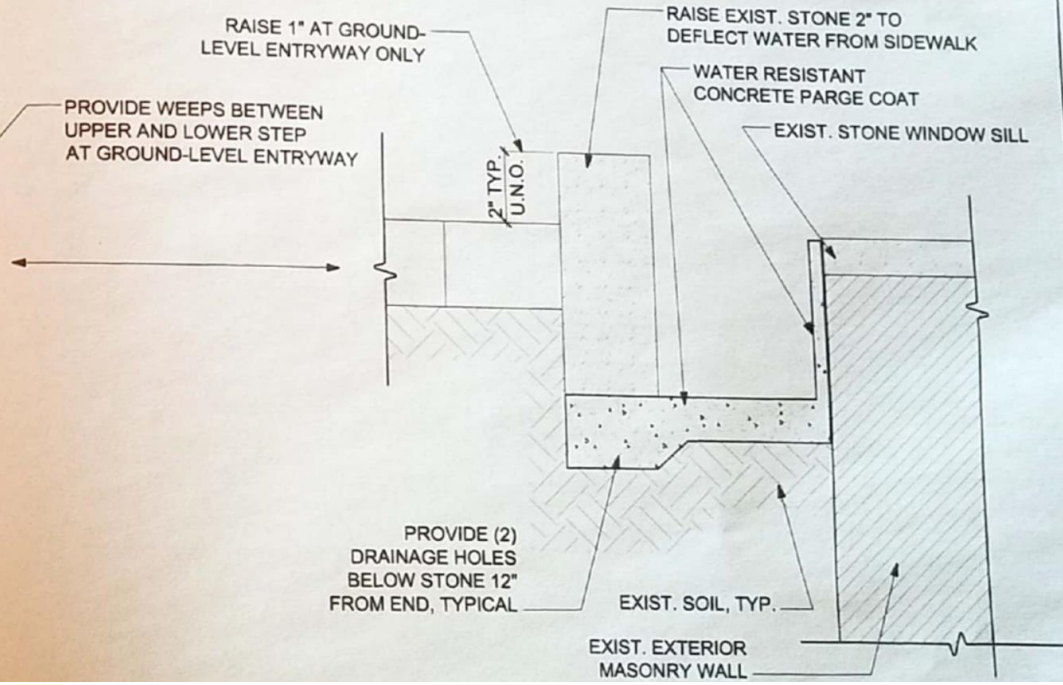
**3** TYPICAL CONNECTION BETWEEN ALL NEW JOISTS AND (E) SUB-FLOOR  
SCALE: 3" = 1'-0"

MINIMUM OR MATERIAL (BY CRACKS)

THICK EACH LIFT. PRIOR TO

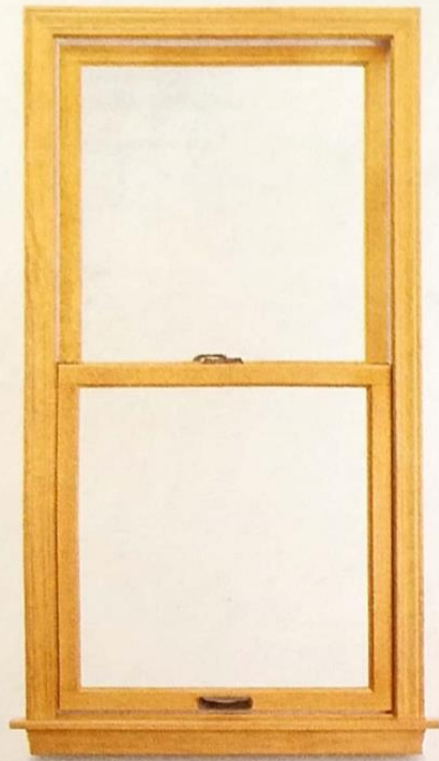


- NOTES:**
1. PROVIDE WEEPS BETWEEN FIRST AND SECOND STEPS AT GRANITE STEPS TO GROUND-LEVEL ENTRYWAY.
  2. GRANITE STEP AT SIDEWALK AT GROUND-LEVEL ENTRYWAY SHALL BE RAISED ONE INCH (1") ABOVE THE SIDEWALK GRADE.

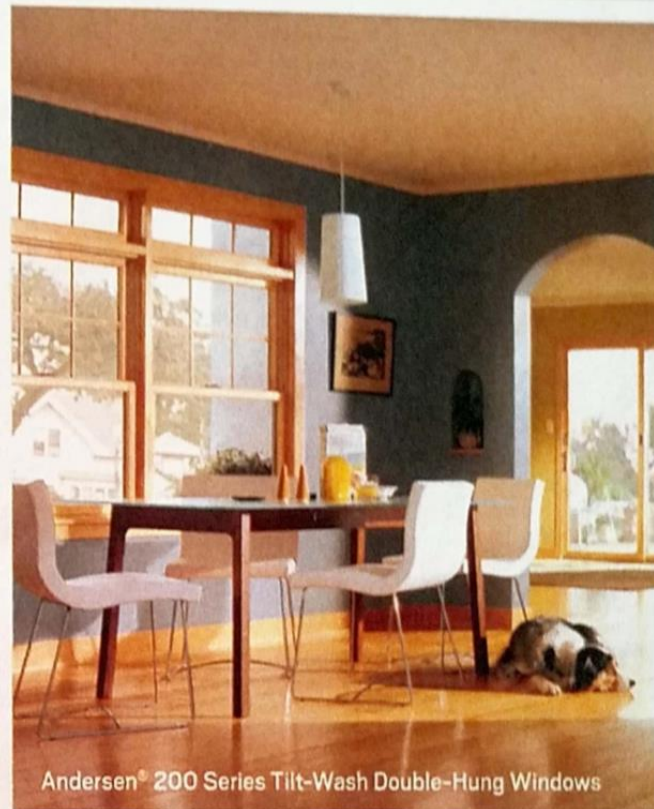


**6** FRONT WINDOW WELL WATER PROOFING DETAIL  
SCALE: 3" = 1'-0"

## 200 SERIES TILT-WASH DOUBLE-HUNG WINDOWS



- Tilt-in feature for easy cleaning
- Available in our most popular sizes
- Choose from unfinished stain-grade Pine or low-maintenance pre-finished White interiors



Andersen® 200 Series Tilt-Wash Double-Hung Windows