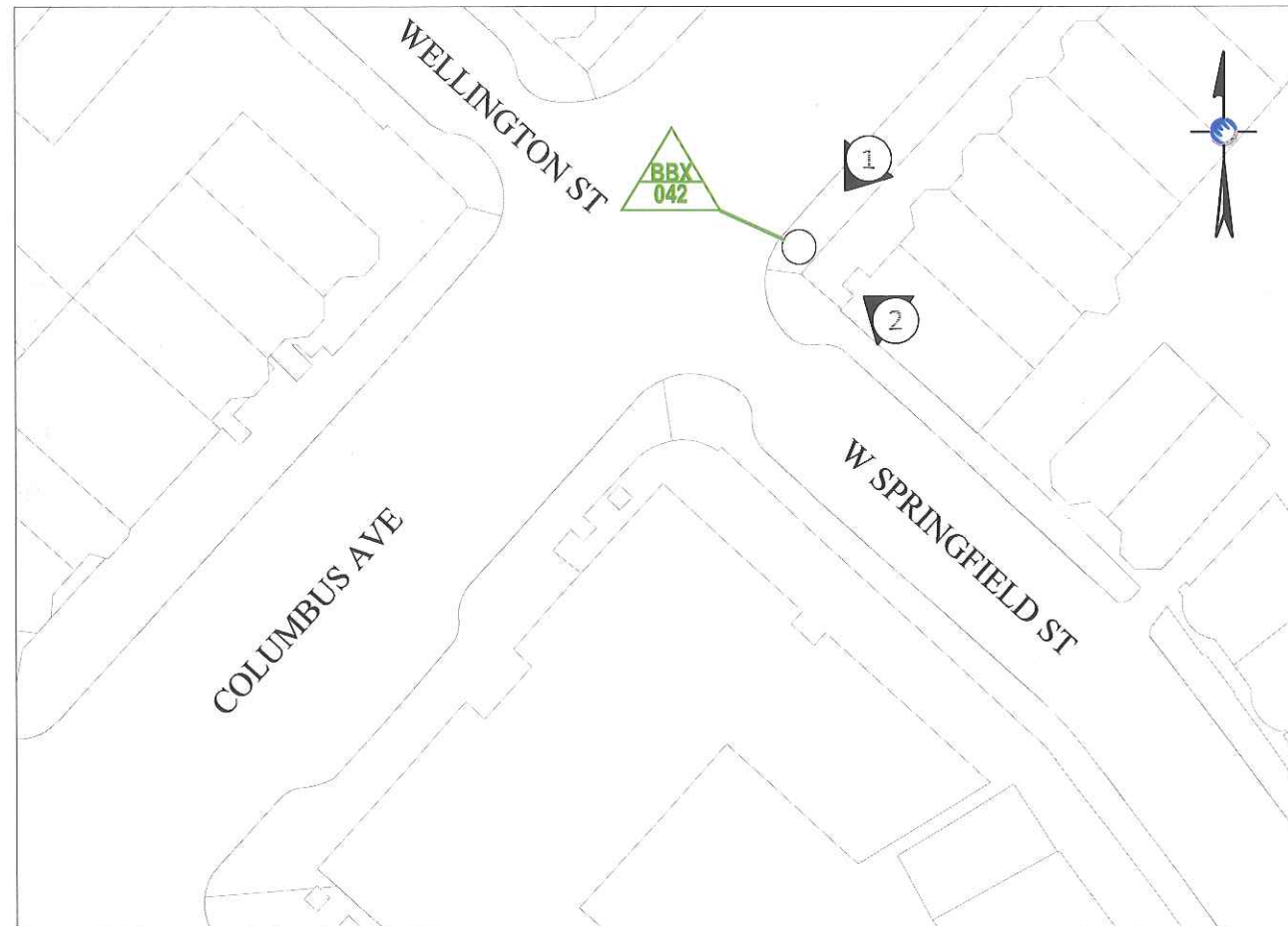


EXTENET SYSTEMS  
CITY OF BOSTON  
SUFFOLK COUNTY, MA



LOCATION MAP

LATITUDE: 42.341066° LONGITUDE: -71.081066°  
SCALE: 1" = 50'



LOCUS MAP

PROJECT LOCATION - NODE BBX-042  
SCALE: 1" = 500'

LOCATION: BOSTON, MA  
SUFFOLK COUNTY

NOTES:  
EXISTING CITY OF BOSTON STREET LIGHT TO BE REMOVED **AFTER** REPLACEMENT LIGHT HAS BEEN INSTALLED, INSPECTED AND POWERED.

PREPARED FOR:  
**extenet** YOUR NETWORK EVERYWHERE  
SYSTEMS

PREPARED BY:  
**UC SYNERGETIC**  
Innovative Thinking. Engineered Solutions.  
21 OXFORD RD  
MANSFIELD, MA 02048  
www.ucseeng.com 1-508-337-7600

NODE  
BBX-042

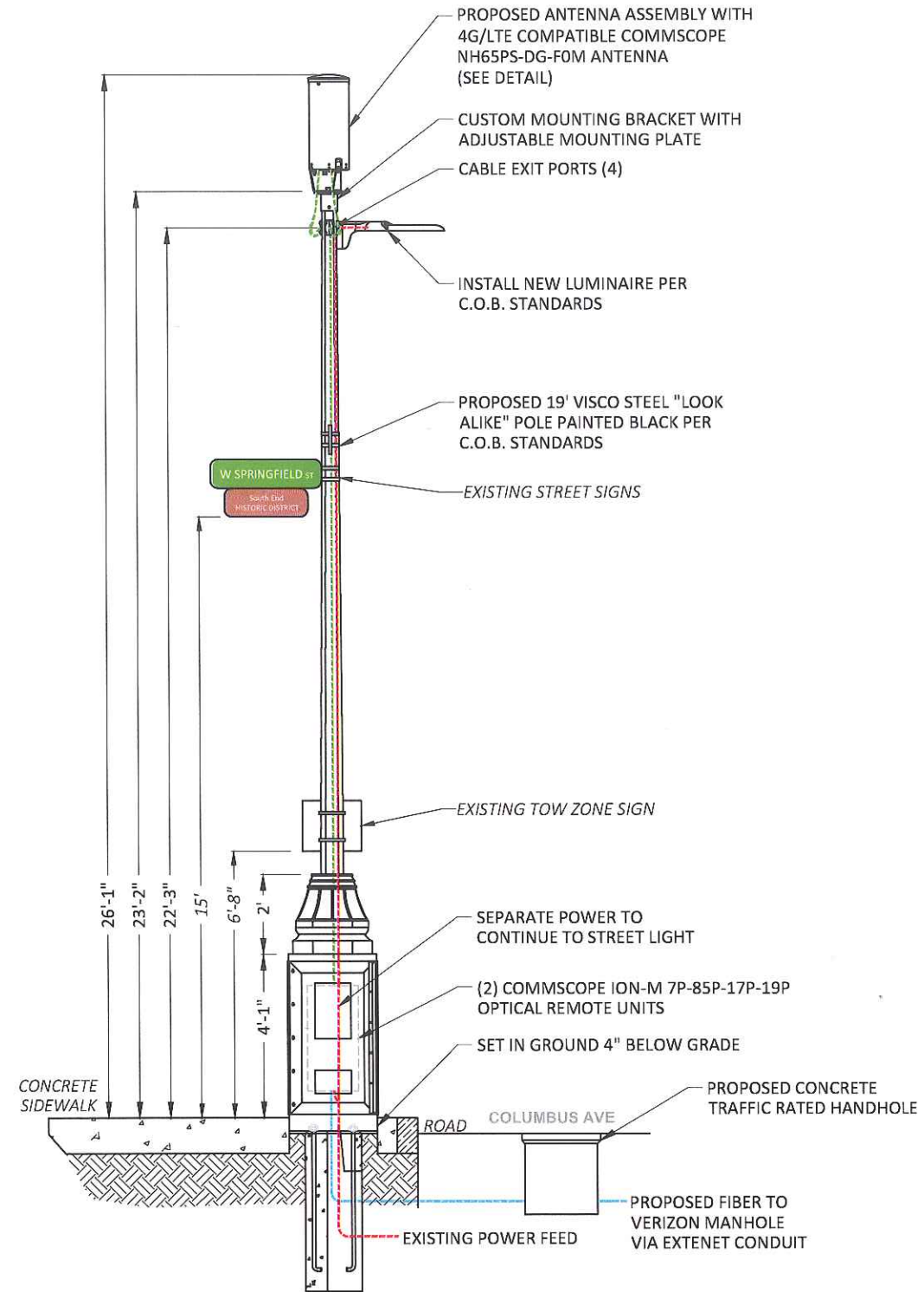
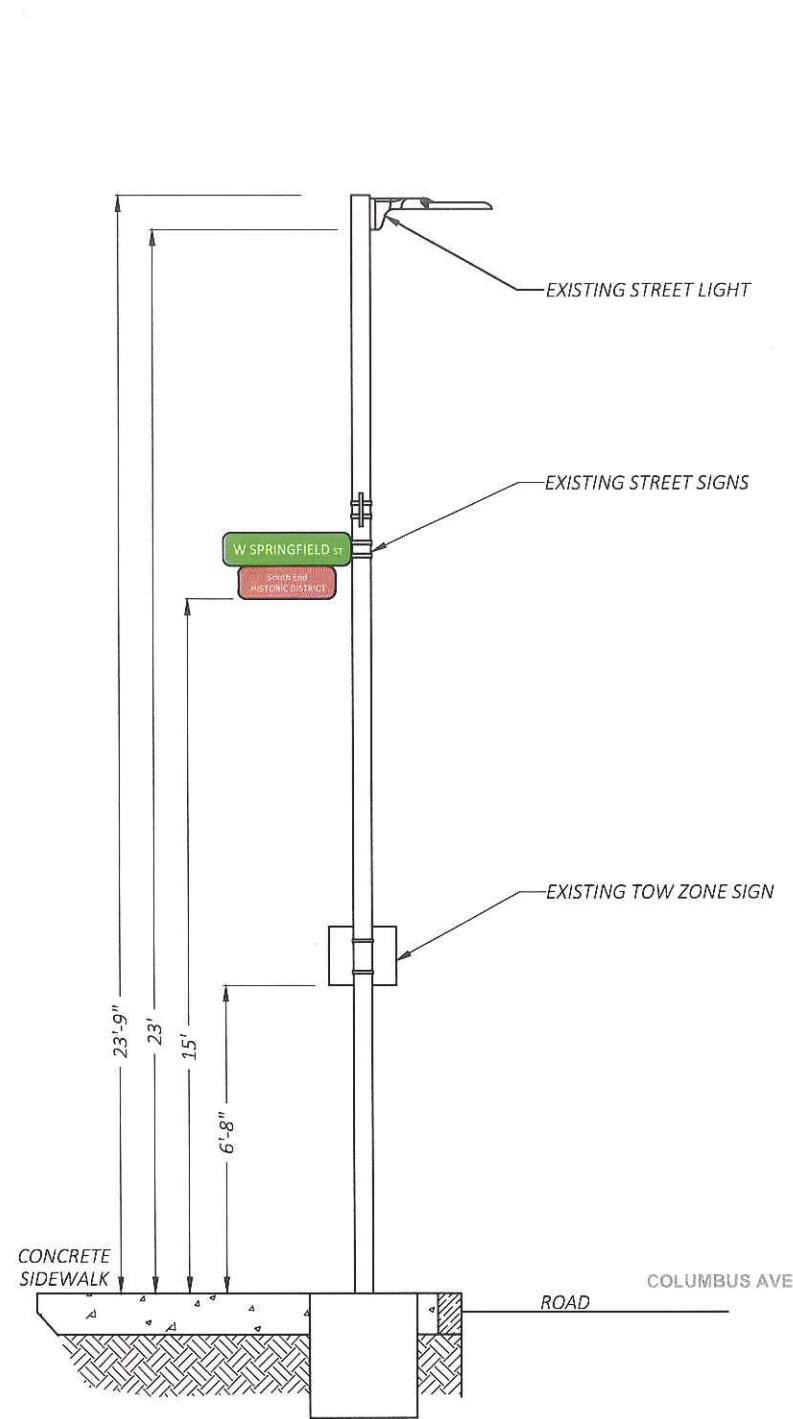
REVISIONS		
REV	DESCRIPTION	DATE
1	UPDATED INFORMATION	04/14/17
2	UPDATED LOCATION	8/1/18

DRAFTER: DTB  
SCALE: AS SHOWN  
ISSUE DATE: 02/03/16  
INDEX NAME: BBX-042  
SHEET #: 1 OF 6

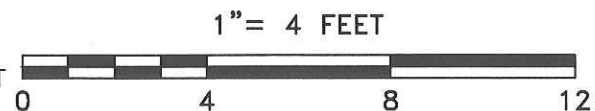
# EXTENET DOWNTOWN BOSTON NODE BBX-042

## SIDE VIEW

AZIMUTH  
OVERTURE: 225°  
ACTUAL: 45°/225°



① EXISTING PROFILE - SIDE VIEW  
LOOKING SOUTHWEST TOWARDS W SPRINGFIELD ST



① PROPOSED PROFILE - SIDE VIEW  
LOOKING SOUTHWEST TOWARDS W SPRINGFIELD ST

LOCATION: BOSTON, MA  
SUFFOLK COUNTY

NOTES:  
EXISTING CITY OF BOSTON STREET LIGHT TO BE REMOVED **AFTER** REPLACEMENT LIGHT HAS BEEN INSTALLED, INSPECTED AND POWERED.

PREPARED FOR:  
 YOUR NETWORK EVERYWHERE  
SYSTEMS

PREPARED BY:  
 **UC SYNERGETIC**  
Innovative Thinking. Engineered Solutions.  
21 OXFORD RD  
MANSFIELD, MA 02048  
www.ucseeng.com 1-508-337-7600

NODE  
BBX-042

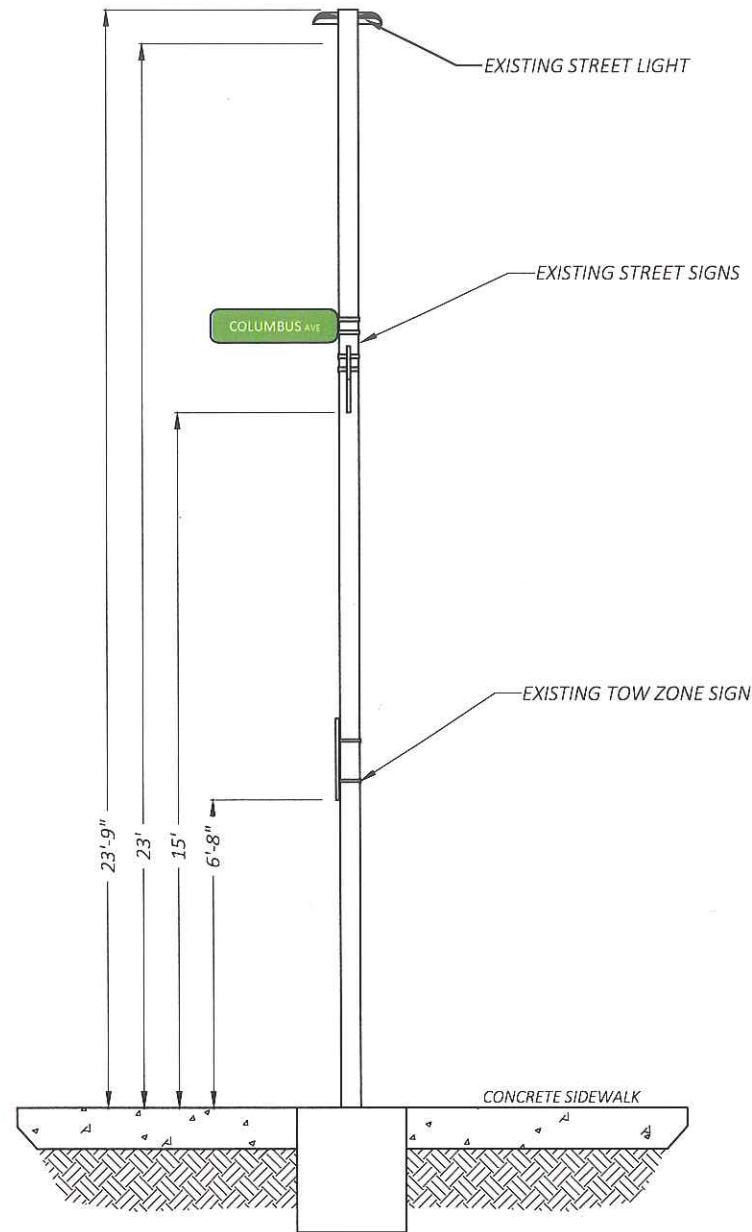
REVISIONS		
REV	DESCRIPTION	DATE
1	UPDATED INFORMATION	04/14/17
2	UPDATED LOCATION	8/1/18

DRAFTER: DTB  
SCALE: 1" = 4'  
ISSUE DATE: 02/03/16  
INDEX NAME: BBX-042  
SHEET #: 2 OF 6

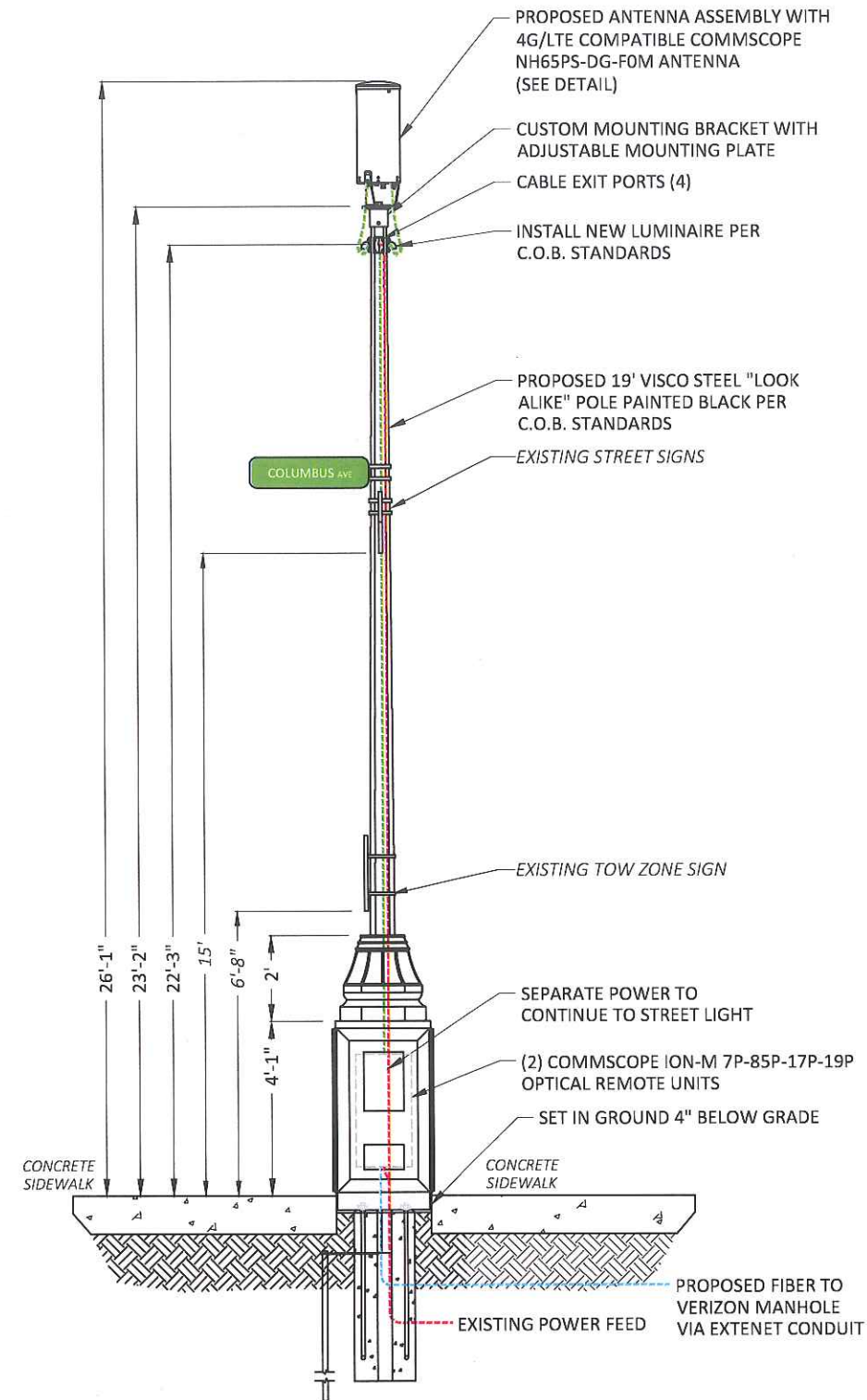
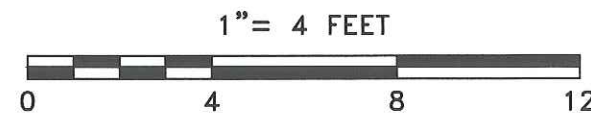
# EXTENET DOWNTOWN BOSTON NODE BBX-042

## REAR VIEW

AZIMUTH  
OVERTURE: 225°  
ACTUAL: 45°/225°



② EXISTING PROFILE - REAR VIEW  
LOOKING NORTHWEST TOWARDS COLUMBUS AVE



② PROPOSED PROFILE - REAR VIEW  
LOOKING NORTHWEST TOWARDS COLUMBUS AVE

LOCATION: BOSTON, MA  
SUFFOLK COUNTY

NOTES:  
EXISTING CITY OF BOSTON STREET LIGHT TO BE REMOVED **AFTER** REPLACEMENT LIGHT HAS BEEN INSTALLED, INSPECTED AND POWERED.

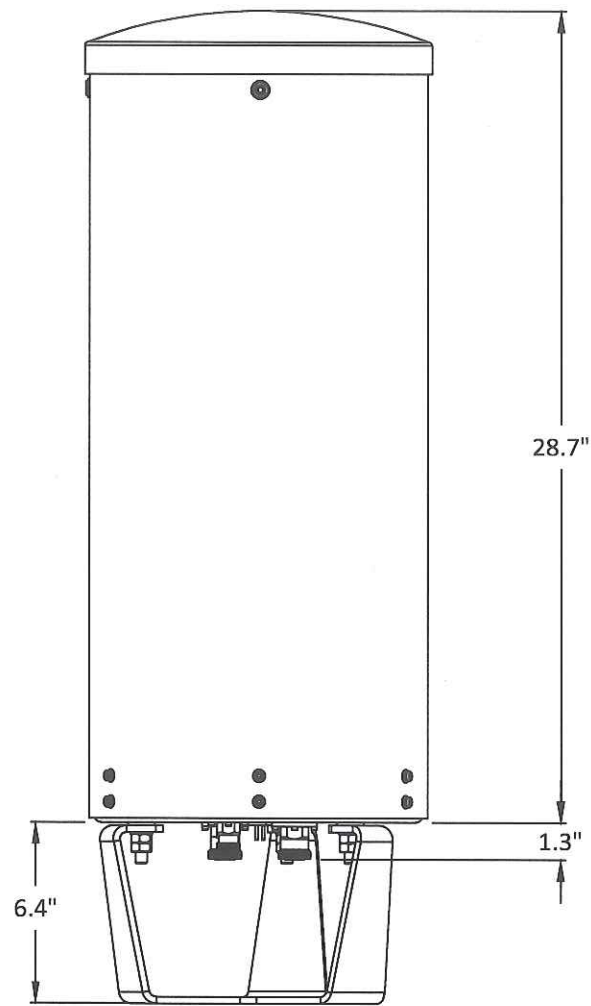
PREPARED FOR:  
 YOUR NETWORK EVERYWHERE  
SYSTEMS

PREPARED BY:  
 **UC SYNERGETIC**  
Innovative Thinking. Engineered Solutions.  
21 OXFORD RD  
MANSFIELD, MA 02048  
www.ucseeng.com 1-508-337-7600

NODE  
BBX-042

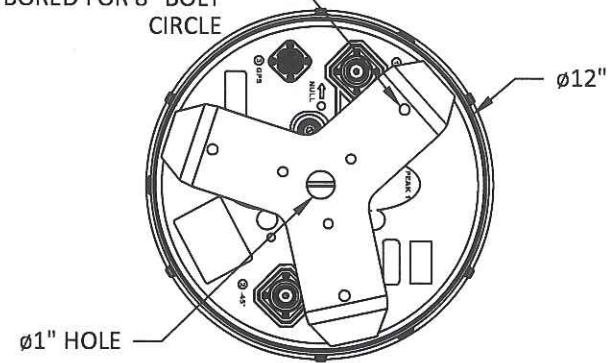
REVISIONS		
REV	DESCRIPTION	DATE
1	UPDATED INFORMATION	04/14/17
2	UPDATED LOCATION	8/1/18

DRAFTER: DTB  
SCALE: 1" = 4'  
ISSUE DATE: 02/03/16  
INDEX NAME: BBX-042  
SHEET #: 3 OF 6



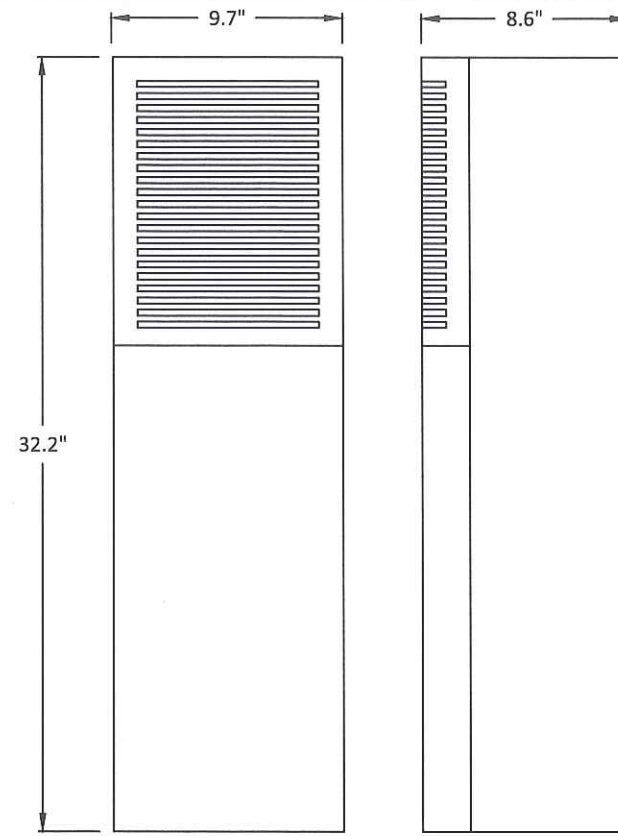
ANTENNA SIDE

BRACKET WILL NEED  
(3) 0.375" HOLES  
BORED FOR 8" BOLT  
CIRCLE



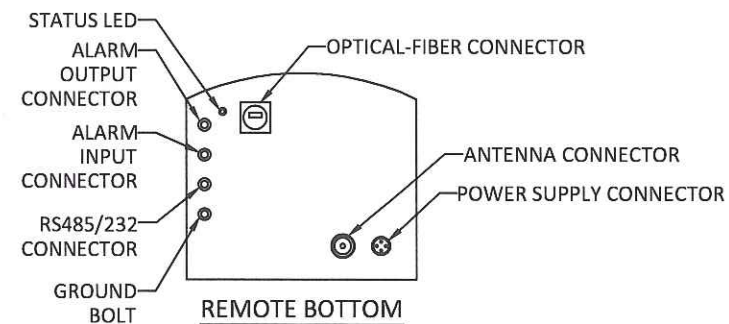
ANTENNA BOTTOM

**COMMSCOPE ANTENNA**  
**NH65PS-DG-F0M**  
BI-DIRECTIONAL DUAL BAND METRO CELL  
SCALE: NTS



REMOTE FRONT

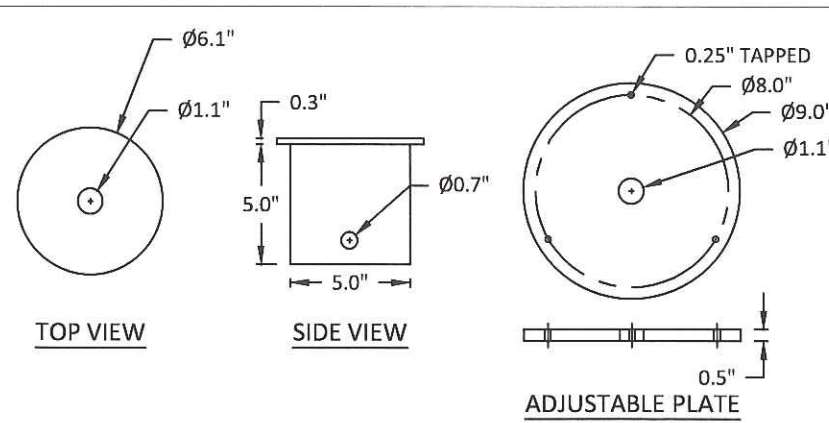
REMOTE SIDE



REMOTE BOTTOM

**COMMSCOPE ION-M 7P-85P-17P-19P**  
**OPTICAL REMOTE UNIT**

SCALE: NTS



TOP VIEW

SIDE VIEW

ADJUSTABLE PLATE

**CUSTOM ANTENNA MOUNTING BRACKET**

SCALE: NTS

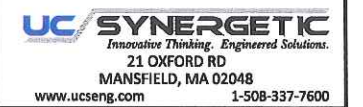
LOCATION: BOSTON, MA  
SUFFOLK COUNTY

NOTES:

PREPARED FOR:



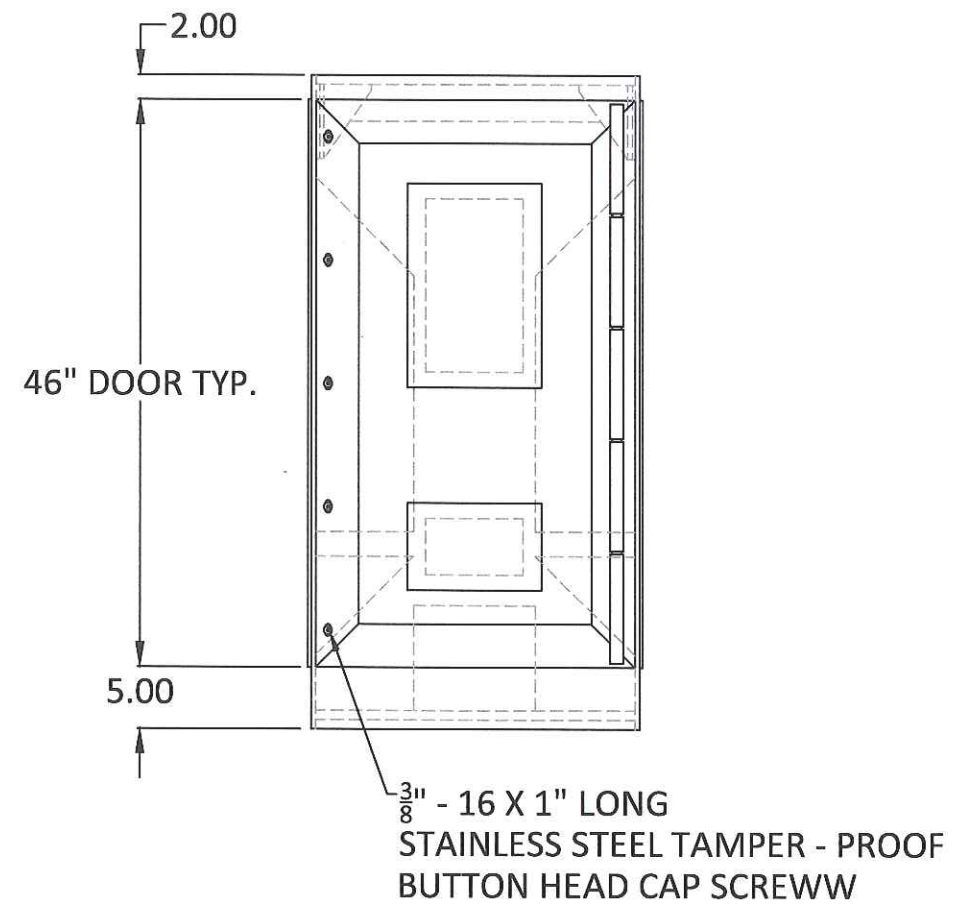
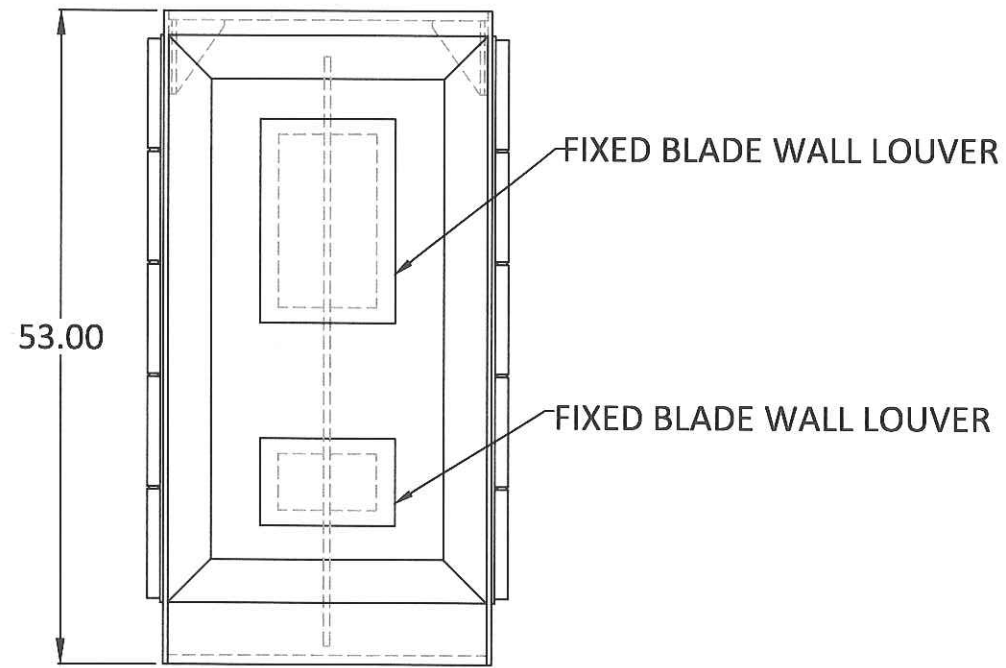
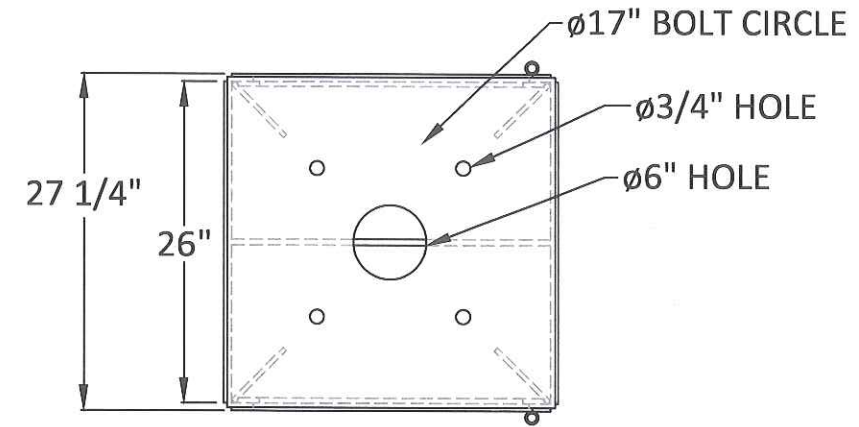
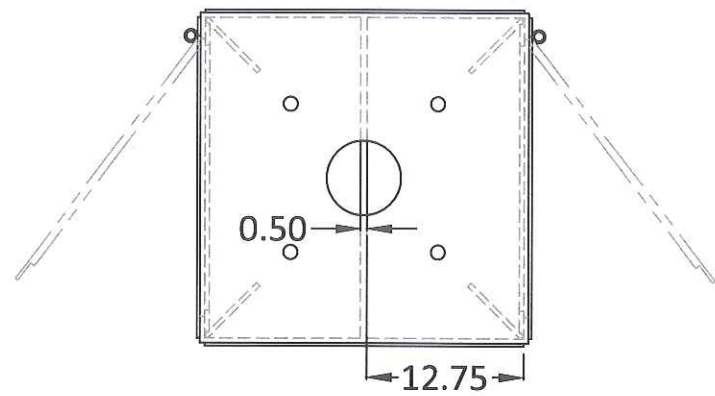
PREPARED BY:



NODE  
BBX-042

REVISIONS		
REV	DESCRIPTION	DATE
1	UPDATED INFORMATION	04/14/17
2	UPDATED LOCATION	8/1/18

DRAFTER: DTB  
SCALE: NTS  
ISSUE DATE: 02/03/16  
INDEX NAME: BBX-042  
SHEET #: 4 OF 6



STEEL ELECTRICAL ENCLOSURE

**PROPOSED BASE CABINET**  
SCALE: 1:15

LOCATION: BOSTON, MA  
SUFFOLK COUNTY

NOTES:

PREPARED FOR:



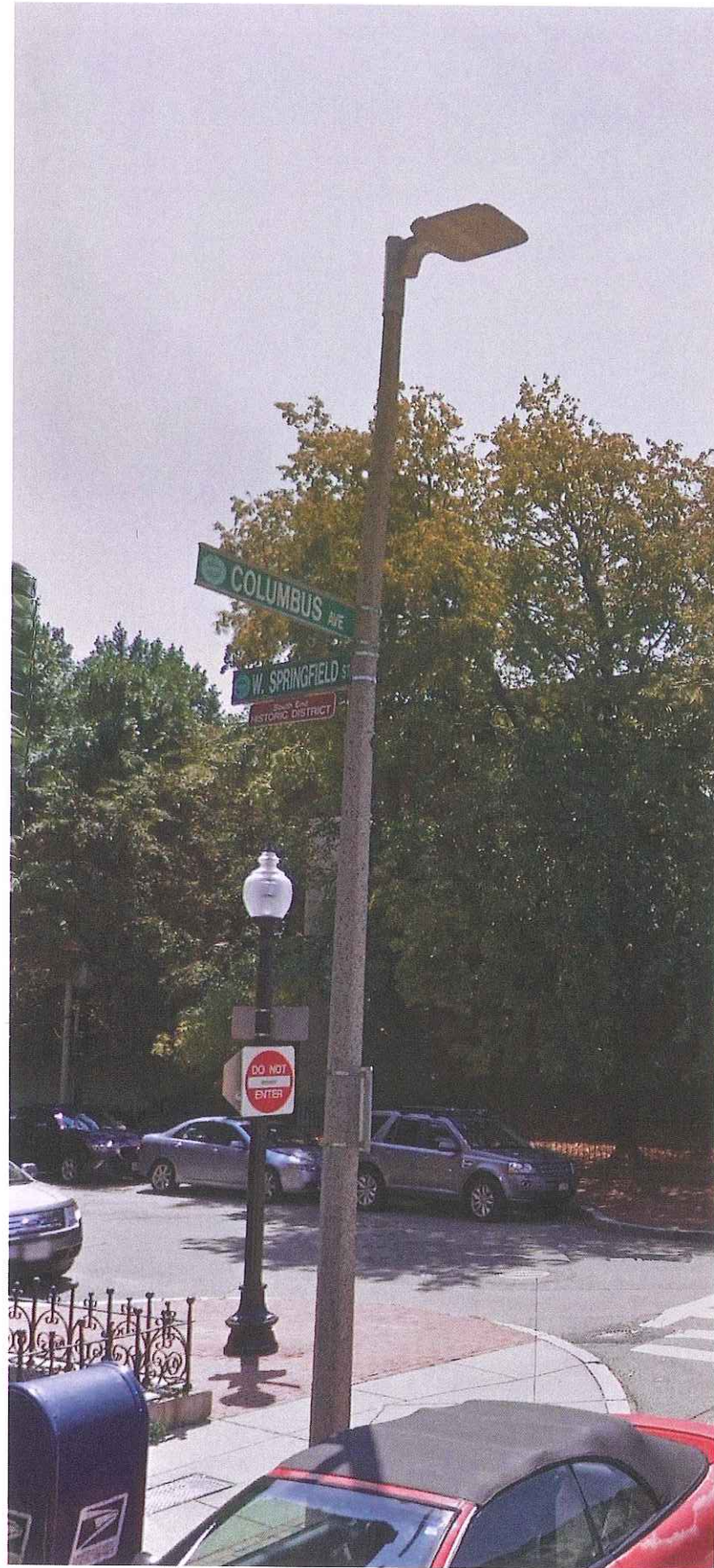
PREPARED BY:



NODE  
BBX-042

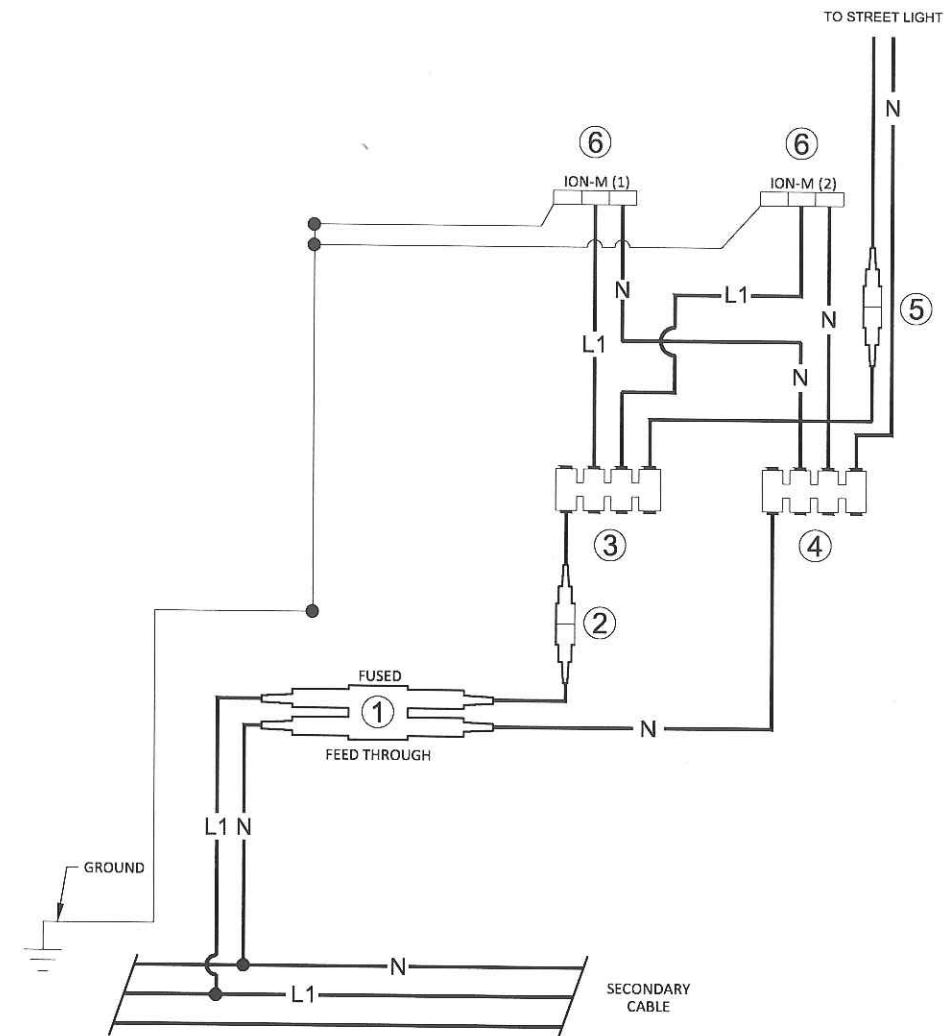
REVISIONS		
REV	DESCRIPTION	DATE
1	UPDATED INFORMATION	04/14/17
2	UPDATED LOCATION	8/1/18

DRAFTER: DTB  
SCALE: NTS  
ISSUE DATE: 02/03/16  
INDEX NAME: BBX-042  
SHEET #: 5 OF 6



**EXISTING POLE**  
SCALE: NTS

- ① STANDARD CITY OF BOSTON "H-TAP" EQUIPPED WITH (1) MERSEN ATQR 20 AMP TIME DELAY FUSE (BASED UPON CONFIGURATION) ON THE "HOT" SIDE AND ONE "DUMMY FUSE" ON THE NEUTRAL SIDE.
- ② STANDARD SINGLE POLE FUSE HOLDER EQUIPPED WITH 1 "DUMMY FEED THROUGH" TO BE USED AS A MAIN DISCONNECT METHOD.
- ③ 4 PORT "SWEETHEART" TAP.(1LSCO PBTS-4-4)
- ④ 4 PORT "SWEETHEART" TAP.(1LSCO PBTS-4-4)
- ⑤ STANDARD SINGLE POLE FUSE HOLDER EQUIPPED WITH 1 "DUMMY FEED THROUGH" TO BE USED AS A STREET LIGHT DISCONNECT METHOD.
- ⑥ EXTENET EQUIPMENT



**EXTENET SYSTEMS**  
**ELECTRICAL WIRING DIAGRAM**  
TYPICAL CITY OF BOSTON STREET LIGHT  
NOT TO SCALE

LOCATION: BOSTON, MA  
SUFFOLK COUNTY

NOTES:

PREPARED FOR:



PREPARED BY:

**UC SYNERGETIC**  
Innovative Thinking. Engineered Solutions.  
21 OXFORD RD  
MANSFIELD, MA 02048  
www.ucseeng.com 1-508-337-7600

NODE  
BBX-042

REVISIONS		
REV	DESCRIPTION	DATE
1	UPDATED INFORMATION	04/14/17
2	UPDATED LOCATION	8/1/18

DRAFTER: DTB  
SCALE: NTS  
ISSUE DATE: 02/03/16  
INDEX NAME: BBX-042  
SHEET #: 6 OF 6