

ARCHDIOCESE OF BOSTON



*Cathedral
of the
Holy Cross*

RENOVATIONS

**APPLICATION FOR CERTIFICATE OF
APPROPRIATENESS / DESIGN APPROVAL**

October 16, 2018

For a November 6th, 2018 hearing date.



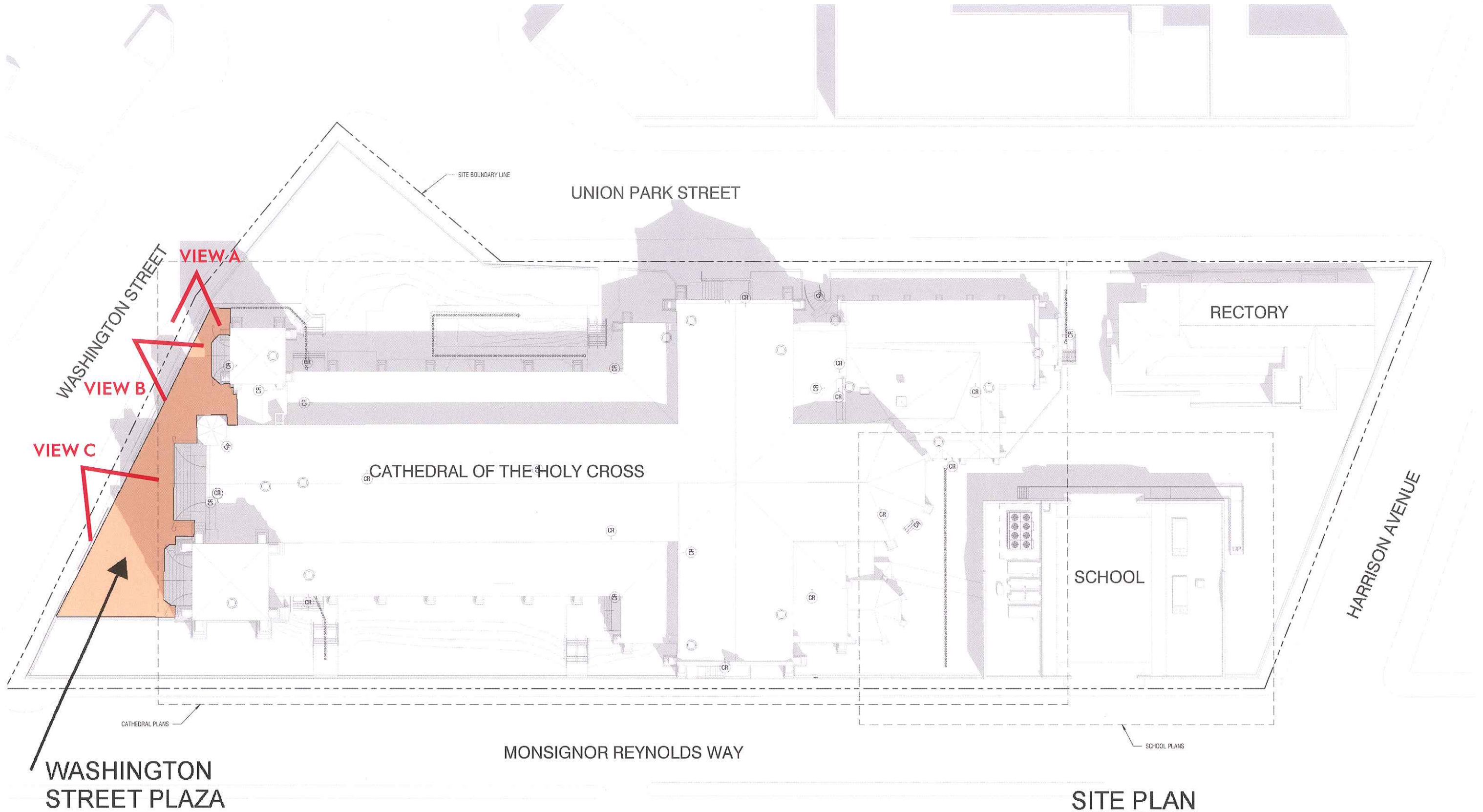
Contents

1. Entry Court Paver Replacement
2. New Cooling Tower
3. Replacement and Supplemental Exterior Lighting
4. Replacement or Addition of New Handrails at Existing Stairs

1

Entry Court Paver Replacement

Site Plan



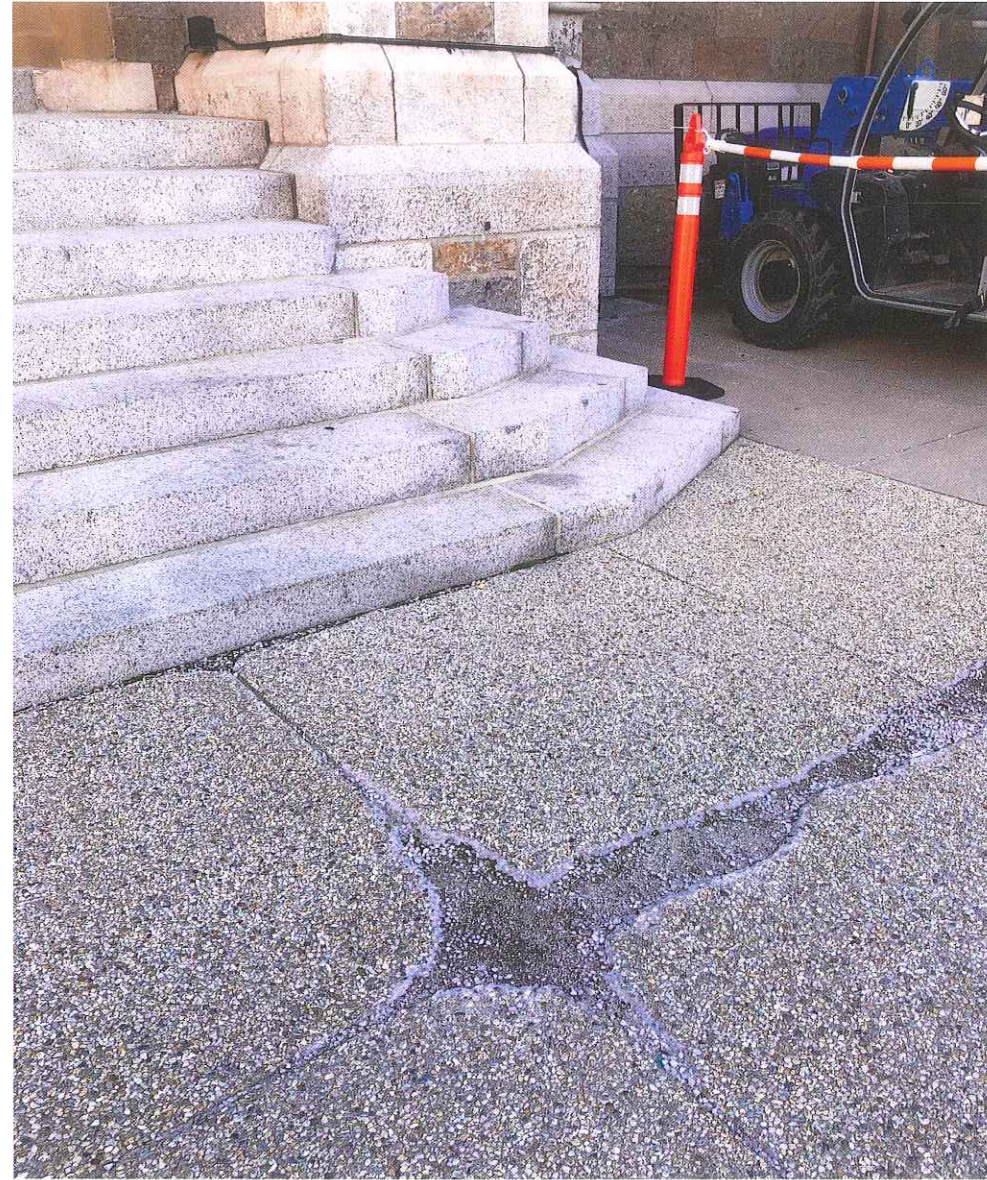
SITE PLAN



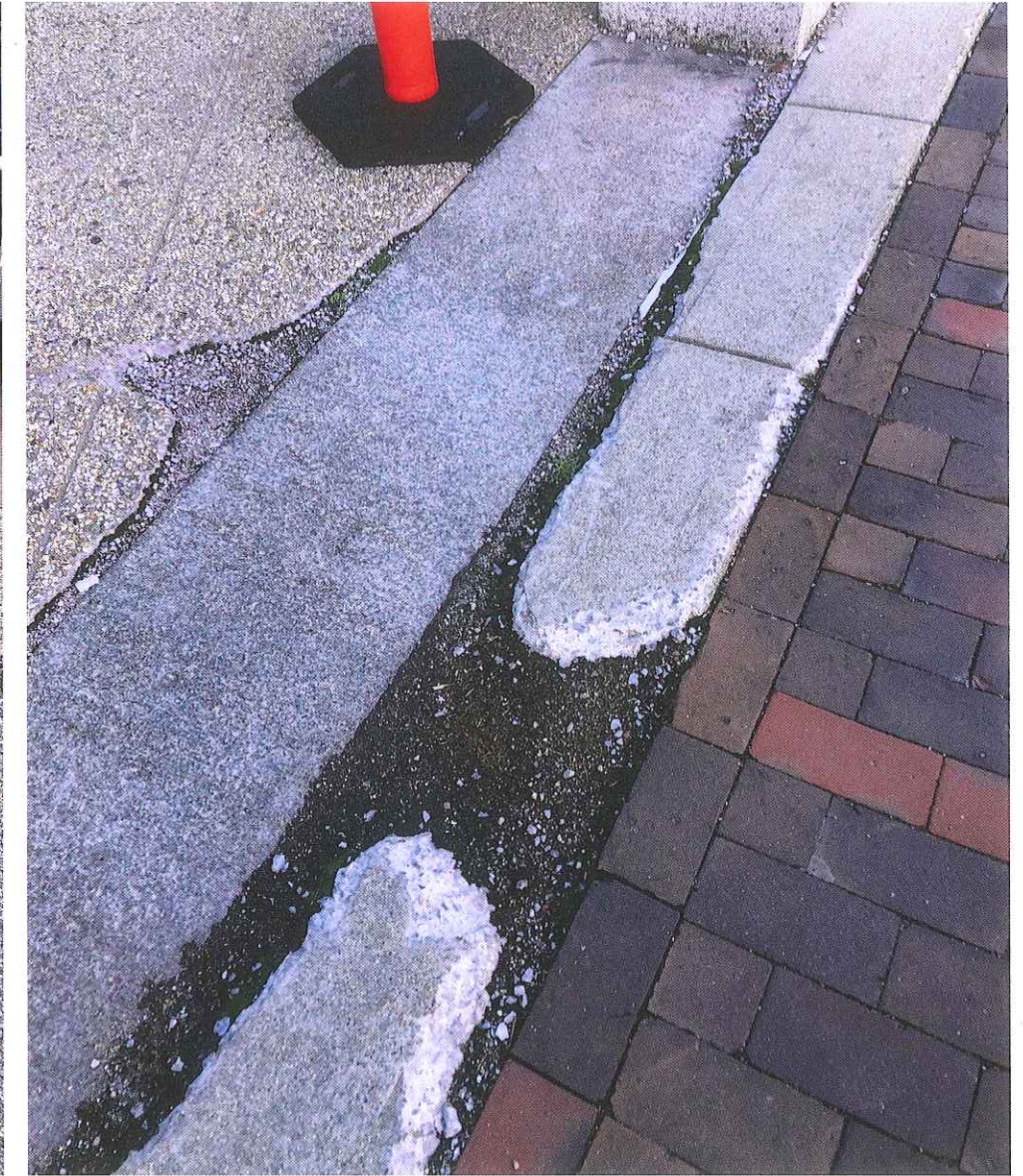
Existing Conditions



VIEW A

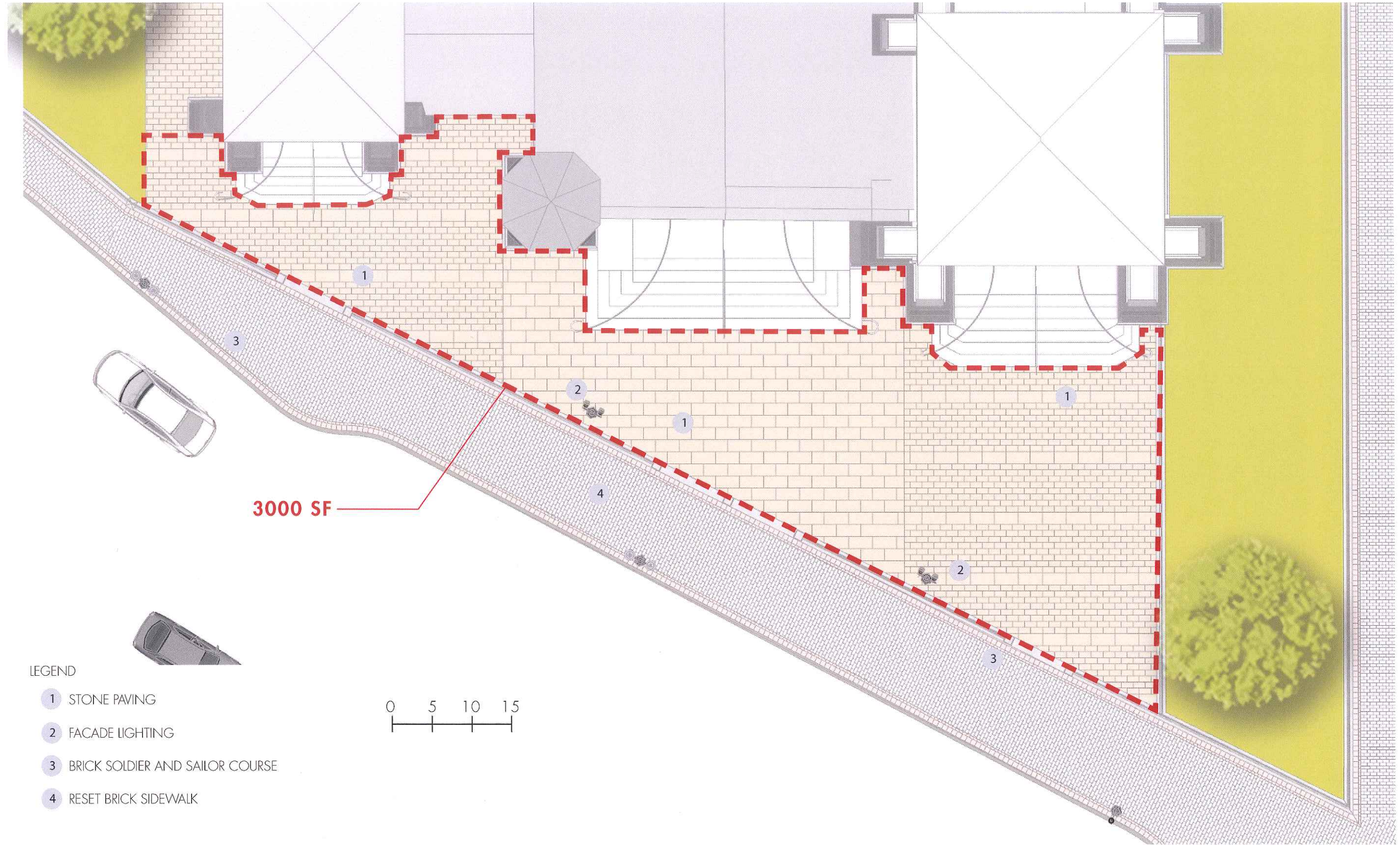


VIEW B



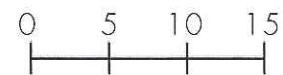
VIEW C

Plan



LEGEND

- 1 STONE PAVING
- 2 FACADE LIGHTING
- 3 BRICK SOLDIER AND SAILOR COURSE
- 4 RESET BRICK SIDEWALK



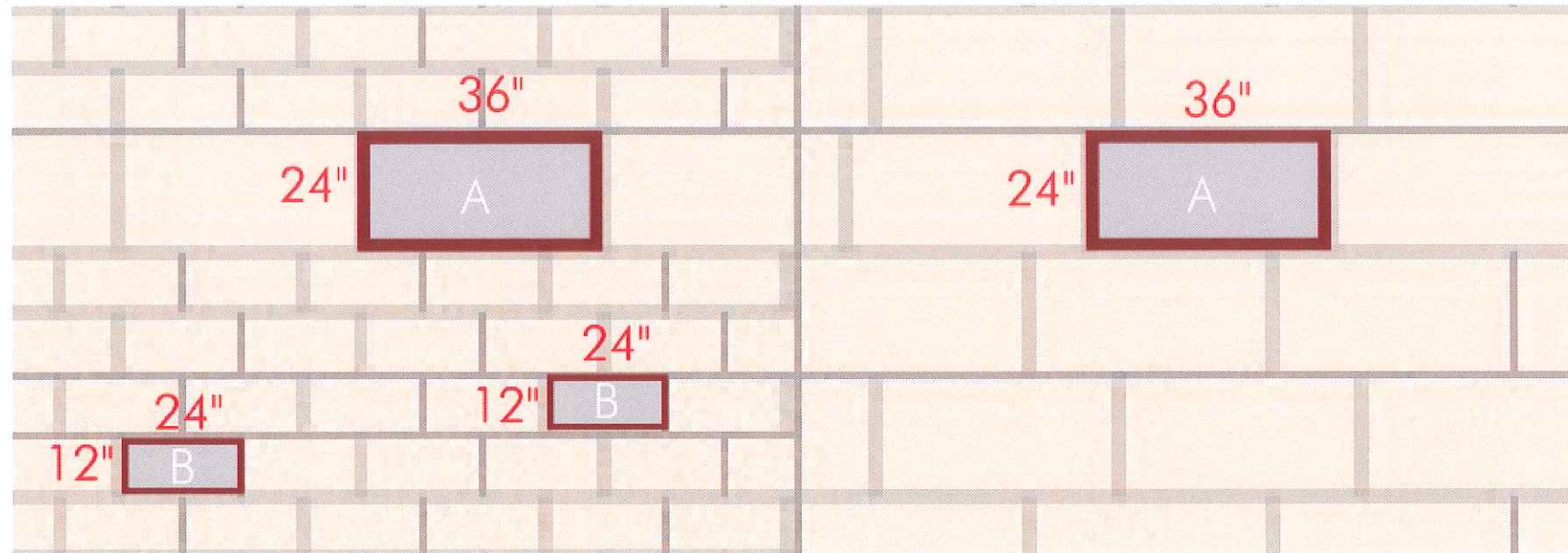
Rendering



LEGEND

- 1 STONE PAVING
- 2 FACADE LIGHTING
- 3 BRICK SOLDIER AND SAILOR COURSE
- 4 RESET BRICK SIDEWALK

Plaza Paving Detail



Granite Paver A:

- Size: 24" x 36"
- Thickness: 3"
- Finish: Thermal
- Color: to match existing Cathedral stone

Granite Paver B:

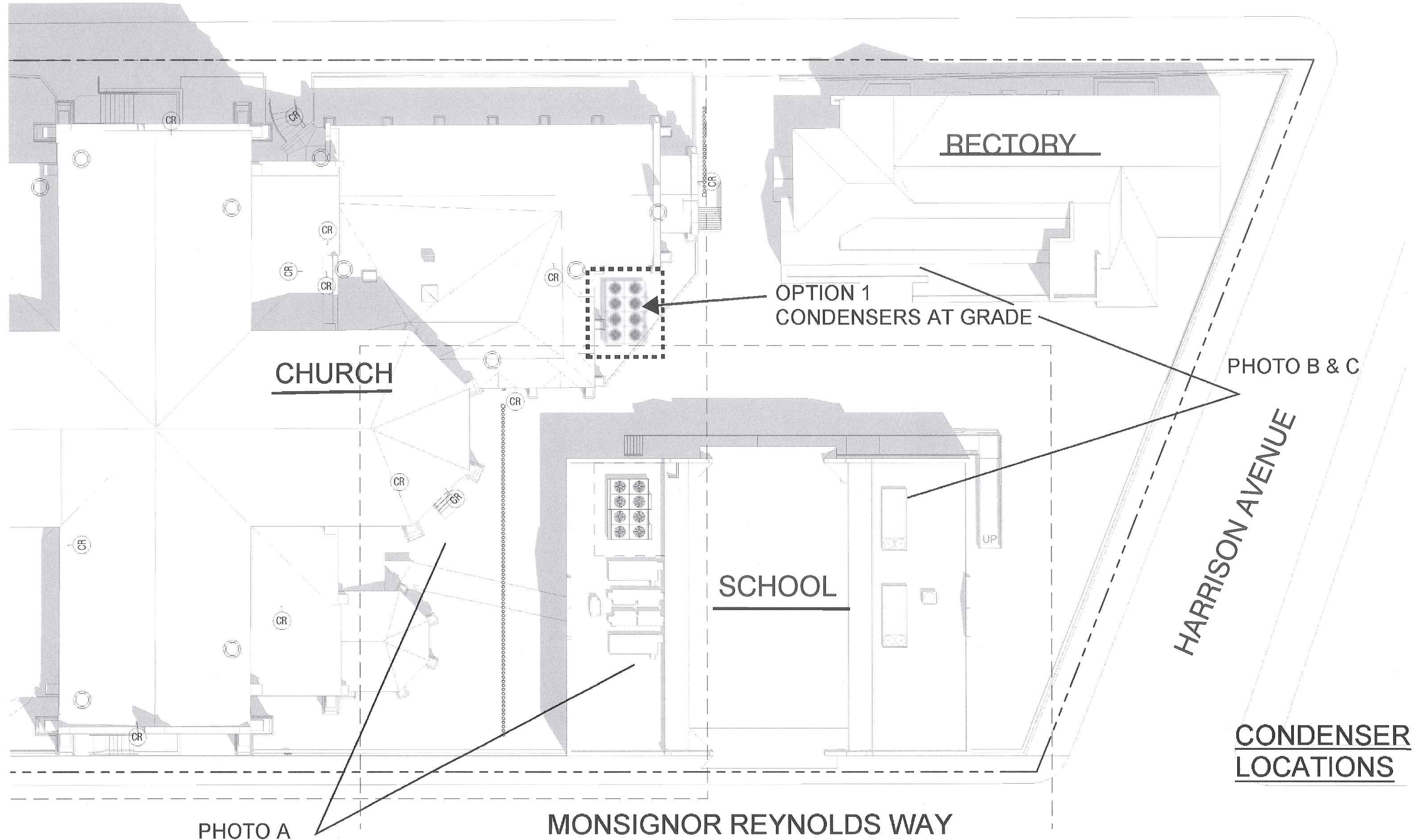
- Size: 12" x 24"
- Thickness: 3"
- Finish: Water Jet
- Color: to match existing Cathedral stone

PLAZA PAVING DETAILS

2

New Cooling Tower

Site Plan



OPTION 1
CONDENSERS AT GRADE

CHURCH

RECTORY

SCHOOL

PHOTO B & C

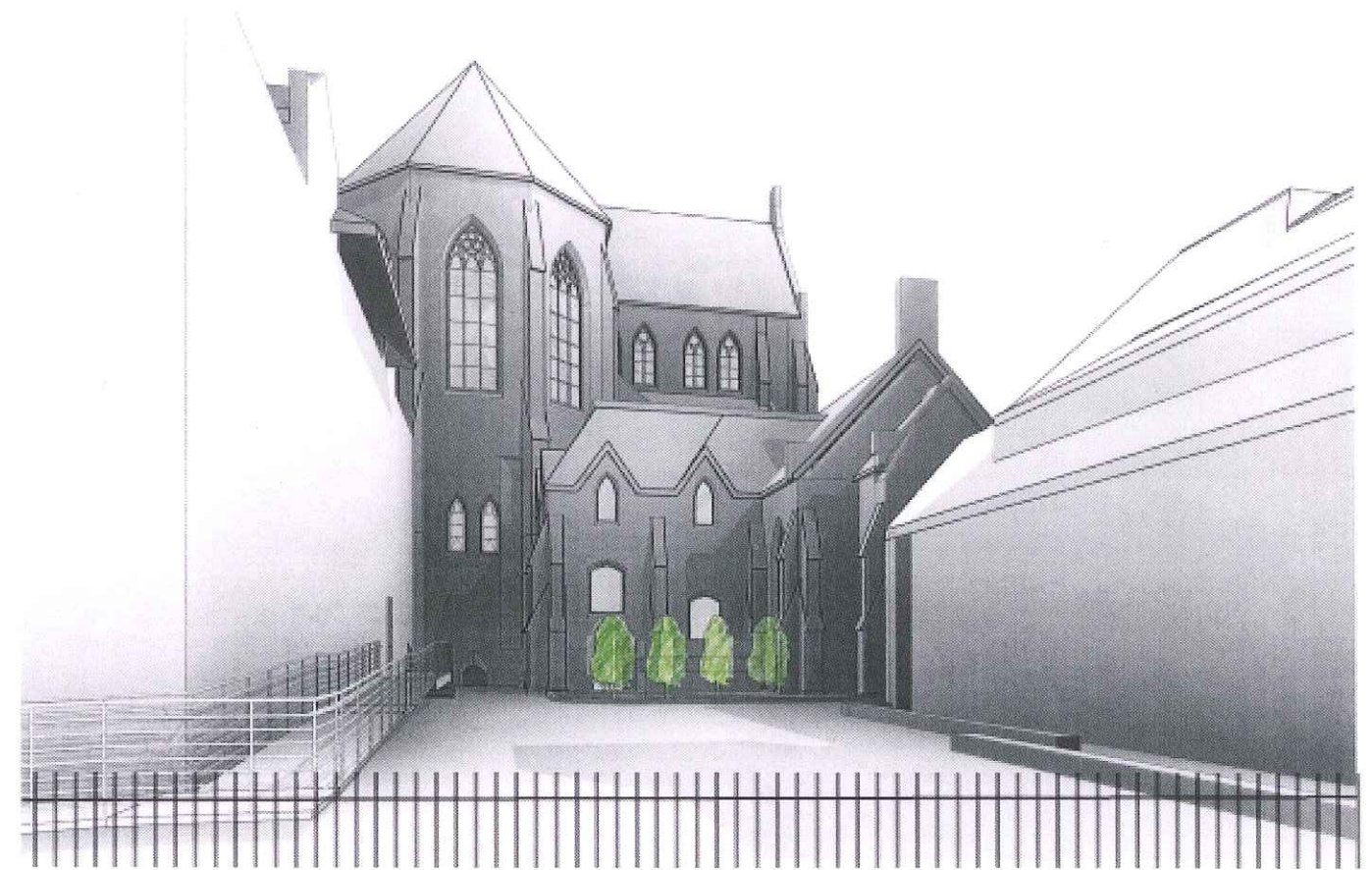
HARRISON AVENUE

CONDENSER
LOCATIONS

PHOTO A

MONSIGNOR REYNOLDS WAY

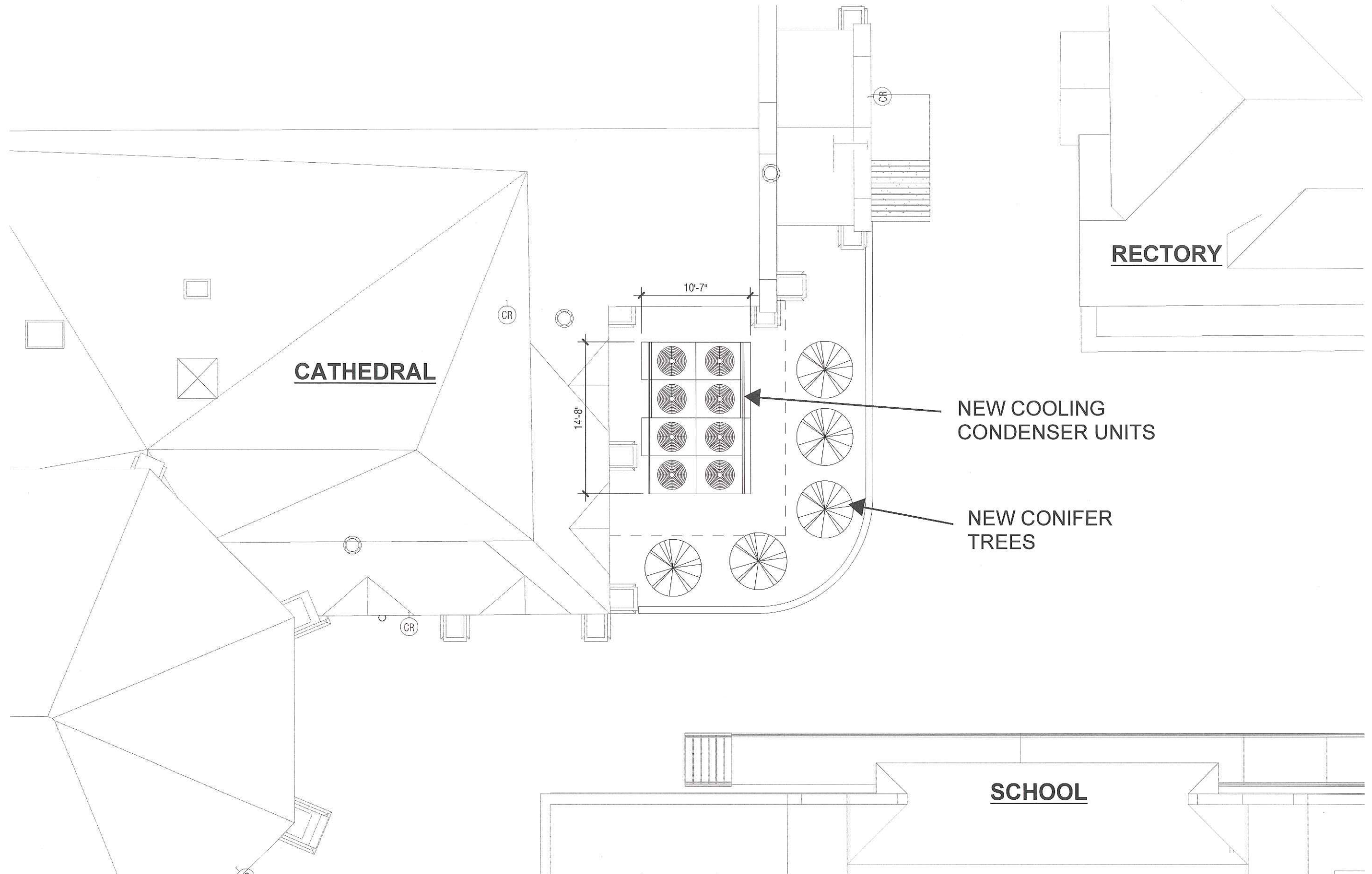
Existing Conditions + Views

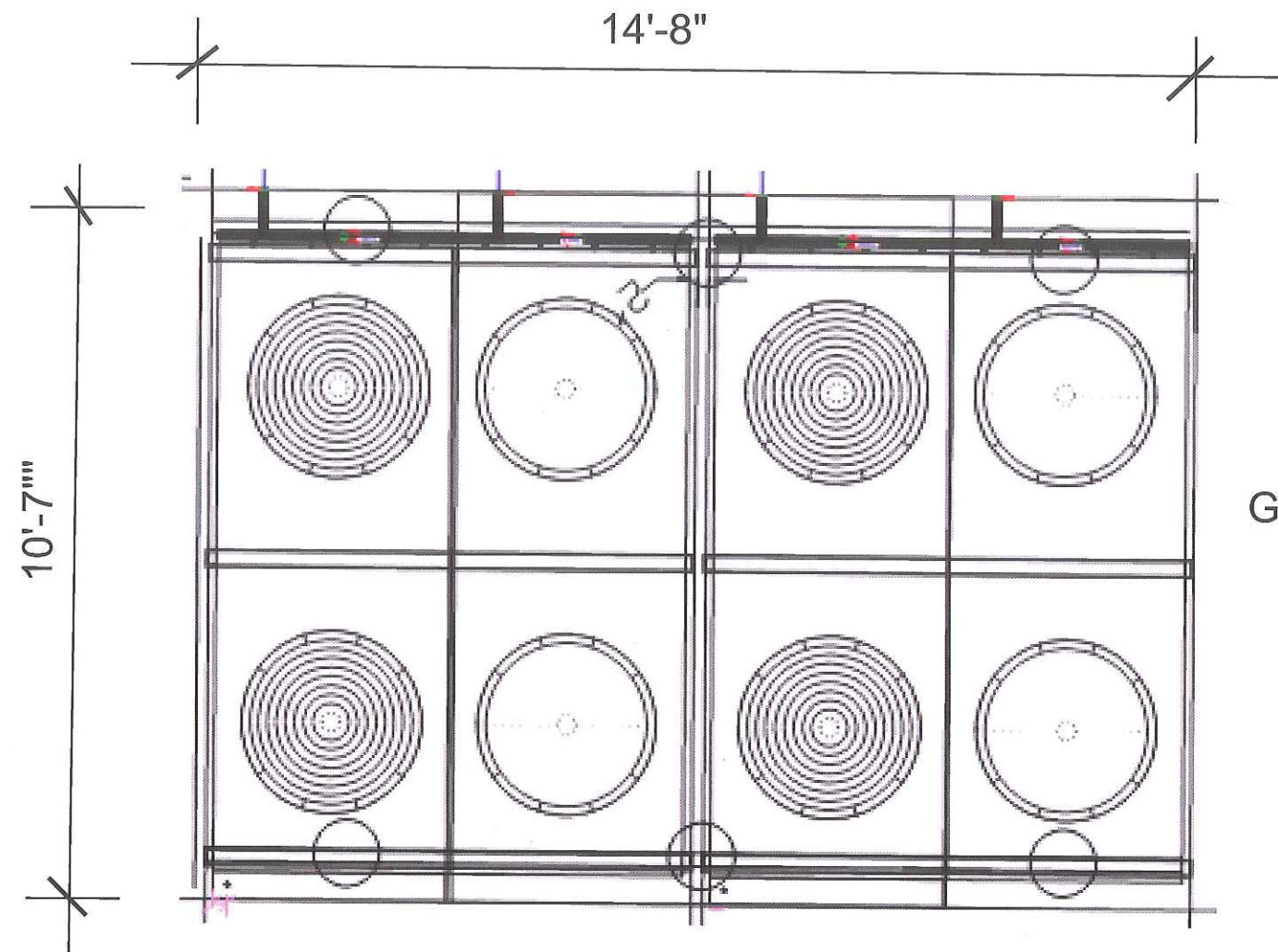


VIEW FROM HARRISON STREET

EQUIPMENT AT GRADE WITH TREES

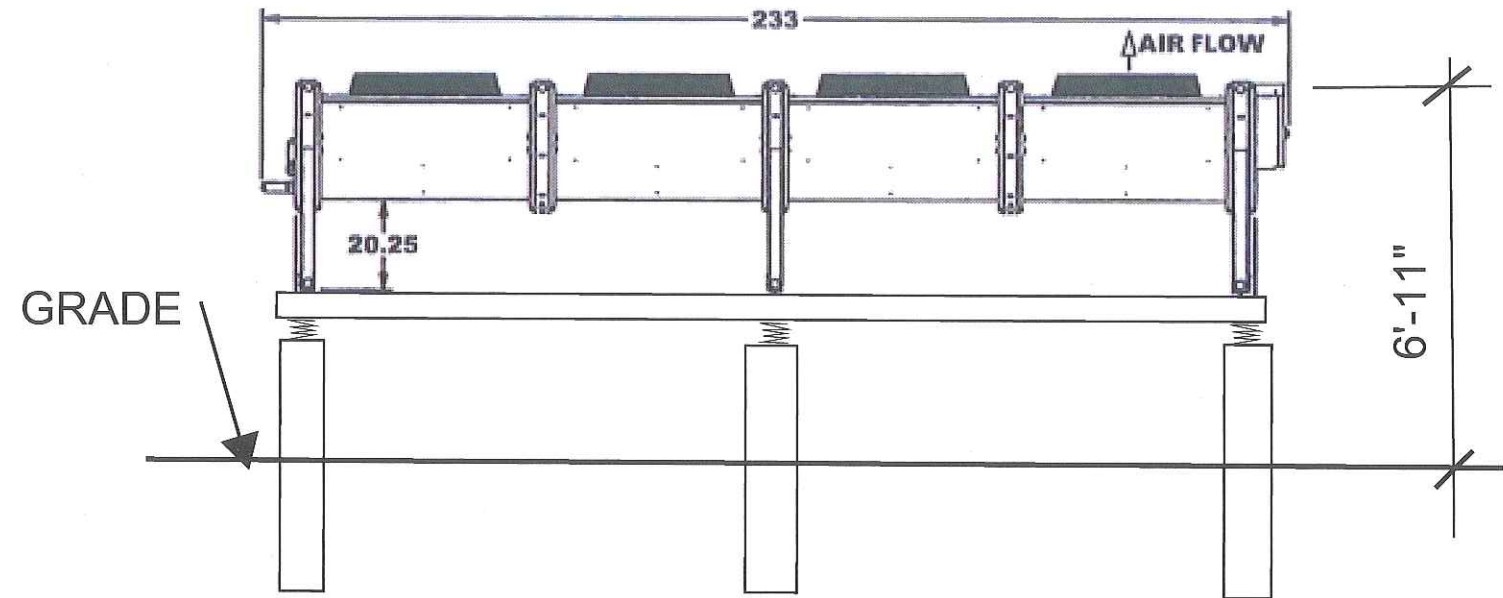
Plan



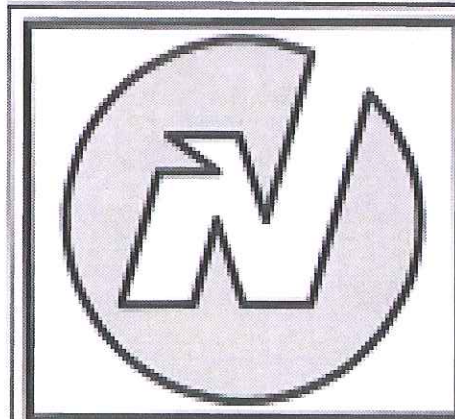


PLAN

CONDENSING UNIT CUT SHEETS



ELEVATION



Novia
 A Division of C&P
 1 Northwestern Dr.
 Salem, NH 03079
 Ph: 603-898-8600
 Fax: 603-898-2755
 sales@cp-novia.com

PROJECT: Holy Cross Cathedral South Boston

CUSTOMER: P.J. Kennedy

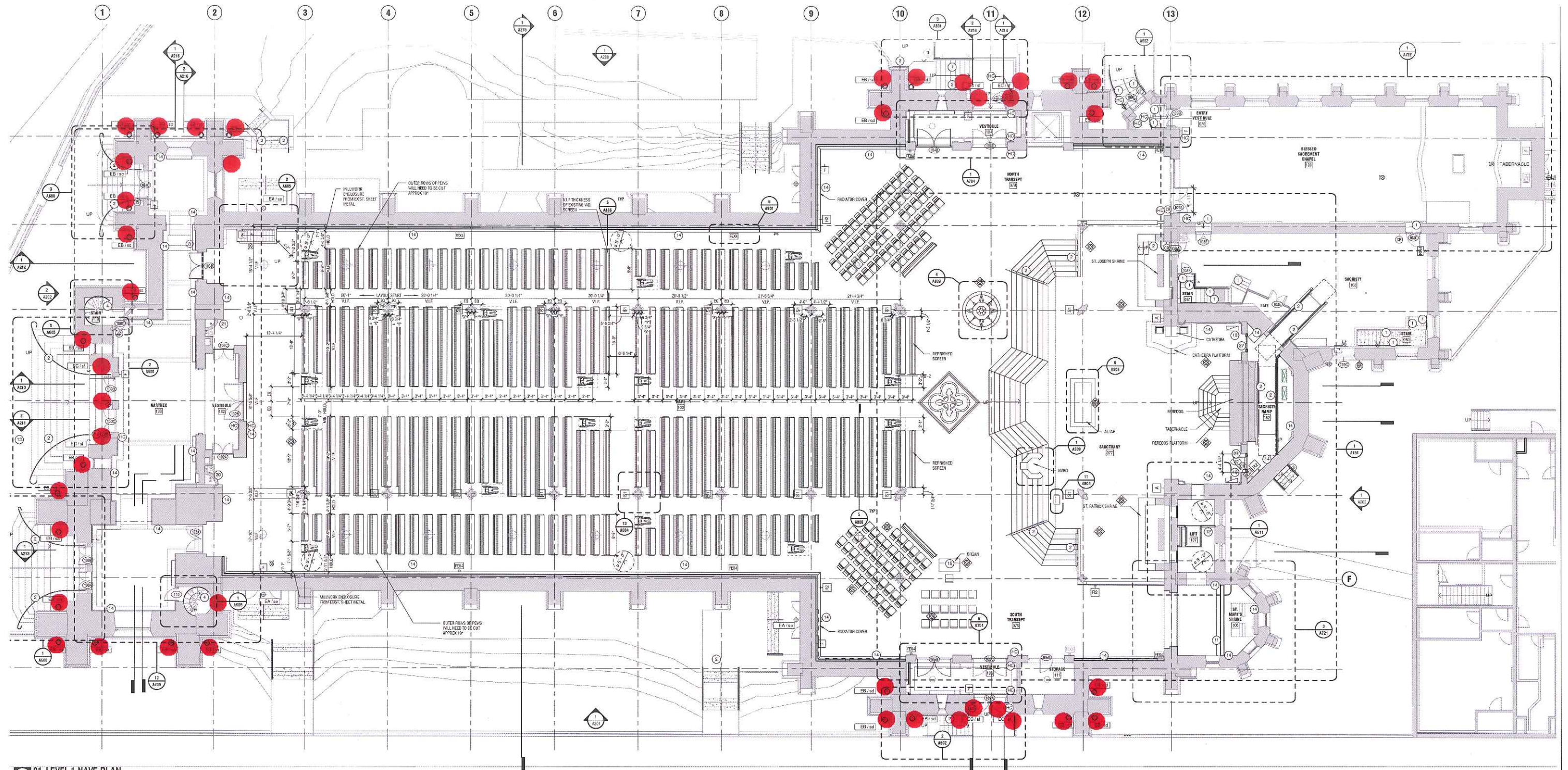
RSM-D

2" DEFLECTION
 RESTRAINED SPRING
 MOUNTING
 RSM-D 100 06/25/2015

3

Replacement and Supplemental Exterior Lighting

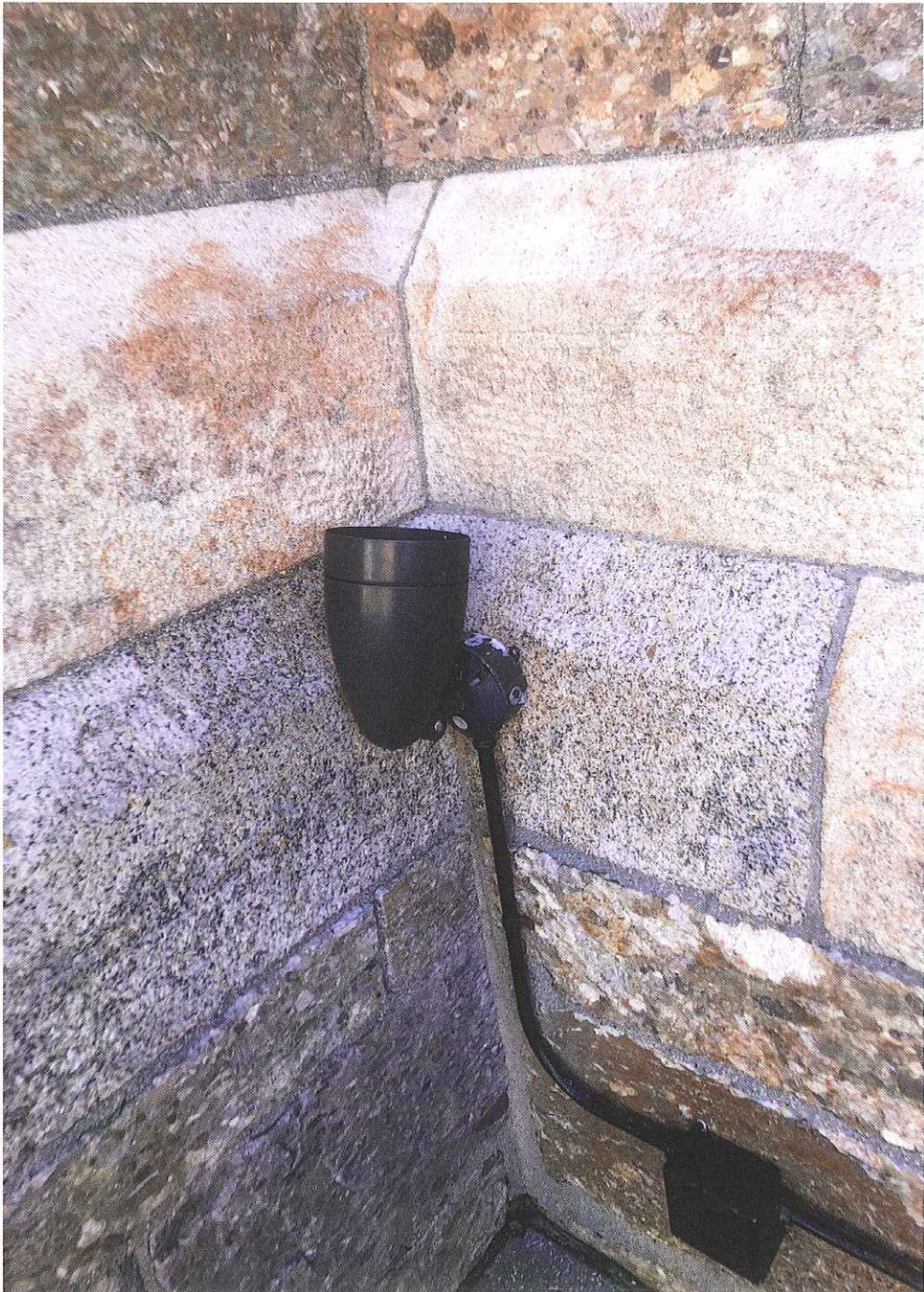
Lighting Plan



01 LEVEL 1-NAVE PLAN
SCALE: 1/8" = 1'-0"

● NEW OR REPLACEMENT LIGHTING

Existing Conditions



Existing Conditions



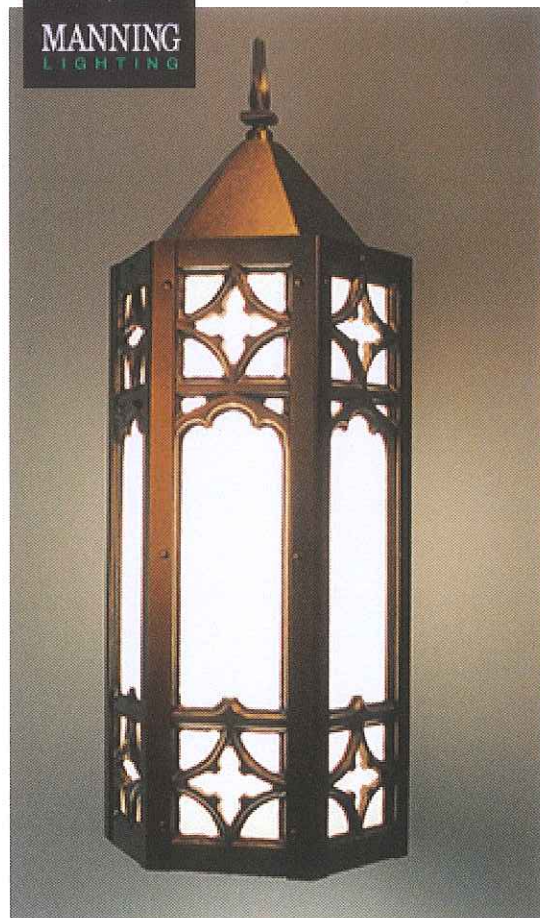
New Lighting

TYPE EA



- SPECIFICATION SHEET:

Tudor Gothic Exterior Sconce



Intricate cast aluminum panels lend this exterior sconce a traditional Tudor gothic style. Choose from white or ivory acrylic panels. Enclosed top and open bottom.

MANNING LIGHTING SPECIFICATION SHEET - Tudor Gothic Exterior Sconce

Fixture	Width	Height	Extension	Lamping	Finish:	Diffuser
LBE-819	8.25"	20"	10"	1N100	PP	WH

Fixture Notes

- Energy efficient fluorescent lamp option also available. Please consult factory.

Lamp Specifications

1N100: Provisions for (1) 100 watt inside frost A-19 medium base incandescent lamp supplied by others.

Fixture Details

- Specify two or three digit color suffix with "PP" finish option.
- HOUSING: Consists of solid cast aluminum trim panels with fabricated steel corner trim posts.
- MOUNTING: Fixture mounts to a standard octagonal junction box.

Finish Specifications

PP: Powder coat paint: Polyester resin powder coat paint finish.

Diffuser Options

WH: Opal White Acrylic

To Specify

- 1) Choose a lamping option
- 2) Choose a voltage option
- 3) Choose a diffuser

Sample: LBE-819-PP(BC)-1N100-120-WH

[Click here to build a custom specification sheet.](#)

Related Fixtures

Tudor Gothic Sconce



Tudor Gothic Pendant (CPI-839 series)



Tudor Gothic Pen



New Lighting

Specification Sheet

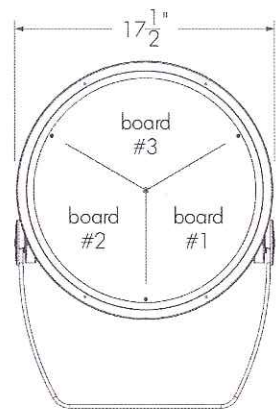
TYPE EB

lumenbeam

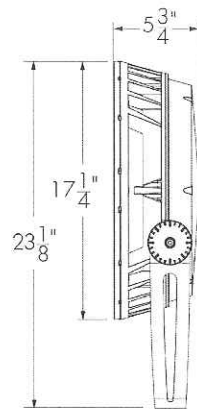
LBX
WHITE & STATIC COLORS

Project Name _____ Qty _____

Type _____ Catalog / Part Number _____



Front view



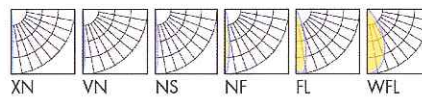
Side view

Photometric Summary

4000K, HO	Delivered output (lm)	Intensity (peak cd)
XN	14,193	1,169,800
VN	10,447	656,461
NS	10,251*	353,555*
NF	10,592*	63,959*
FL	10,689*	27,663*
WFL	9,997*	9,456*

Photometric performance is measured in compliance with IESNA LM-79-08.
*Estimated. Consult website for the latest IES and LDT files.

Optics



Control

ON/OFF 0-10V DALI



Rating



Description

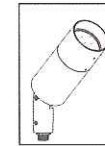
The Lumenbeam LBX is a high-performance, 140W or 205W luminaire for lighting multi-story facades and tall structures. Noted for its slim form factor and long L70 lifetime, the luminaire can be configured with numerous options including two outputs RO (140W) and HO (205W); optics for flood or accent lighting; a choice of color temperatures and colors; various mounting options, accessories, spread lenses and controls.

Features

Color and Color Temperature	2200K, 2700K, 3000K, 3500K, 4000K, 5700K, Red, Green, Blue
Optics (nominal distribution)	4°, 6°, 10°, 20°, 40°, 60°
Optical Option	Linear spread lens horizontal distribution, Linear spread lens vertical distribution
Options	Short Yoke, 3G ANSI C136.31 Vibration Rating for bridge applications, Corrosion-resistant coating for hostile environments
Power Consumption	140 W (RO version), 205 W (HO version)
Warranty	5-year limited warranty

TYPE EC

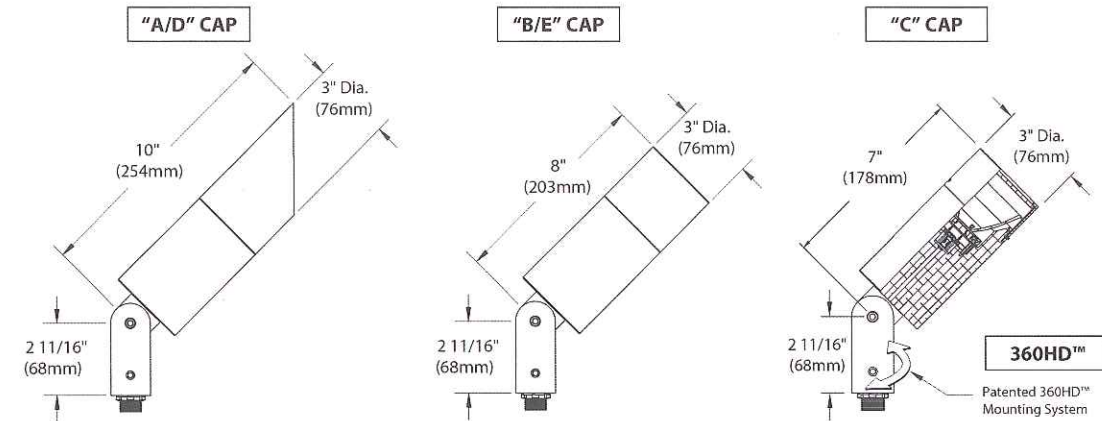
DENALI SERIES™ FLOODLIGHT



BKSSL
SOLID STATE LIGHTING
12-27W LED



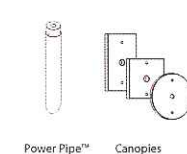
PROJECT: _____
TYPE: _____



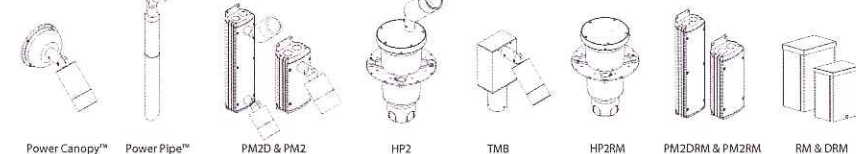
All dimensions indicated on this submittal are nominal. Contact Technical Sales if you require more stringent specifications.

Accessories (Configure separately)

Mounting:



Drivers (Configure separately)



SPECIFICATIONS

GreenSource Initiative™

Metal and packaging components are made from recycled materials. Manufactured using renewable solar energy, produced on site. Returnable to manufacturer at end of life to ensure cradle-to-cradle handling. Packaging contains no chlorofluorocarbons (CFCs). Use of this product may qualify for GreenSource efficacy and recycling rebates. Consult www.bklighting.com/greensource for program requirements.

Materials

Furnished in Copper-Free Aluminum (Type 6061-T6).

Body

Fully machined from solid billet. Unibody design provides enclosed, water-proof wireway and integral heat sink for maximum component life. Integral knuckle for maximum mechanical strength. High temperature, silicone 'O' Ring provides water-tight seal.

Knuckle

Patented 360HD™ Mounting System features a mechanical taper-lock, which allows a full 180° vertical adjustment without the use of serrated teeth, which inherently limit aiming. High temperature, silicone 'O' Ring provides water-tight seal and compressive resistance to maintain fixture position. Design withstands 73 lb. static load prior to movement to ensure decades of optical alignment. 1/2" pipe thread for mounting. Biaxial source control additionally provides 360° horizontal rotation in addition to vertical adjustment. 'Aim-And-Lock' Technology allows precision adjustment without the redundant tightening and loosening of knuckle screw.

Cap

Fully machined. Accommodates [2] lens or lower media. Choose from 45° cutoff ('A' or 'D'), 1" deep bezel with 90° cutoff ('B' or 'E') or flush lens ('C') cap styles. 'A' and 'B' caps include weep-hole for water and debris drainage. 'D' and 'E' caps exclude weep-hole and are for interior use only.

Lens

Shock resistant, tempered, glass lens is factory adhered to fixture cap and provides hermetically sealed optical compartment.

BKSSL®

Integrated solid state system with 'x' technology is scalable for field upgrade. Modular design with electrical quick disconnects permit field maintenance.

LM-80 certified. Minimum 50,000 hour rated life at 70% of initial lumens (L70). BKSSL technology provides long life, significant energy reduction and exceptional thermal management.

Color Management

Corrected cold phosphor technology delivers near-perfect natural white light. Long term phosphor maintenance over product life. Exact color point conformity exceeds ANSI C78.377 standard. Provides uniform beam with no color variation over angle. Module exceeds 80 CRI (RA>80, R9>16).

Remote Driver

For use with remote LED driver. See remote driver submittal to determine remote distance and wiring requirements prior to detailing field installation of any remote wiring.

Optics

Interchangeable OPTIKIT™ modules permit field changes to optical distribution.

Wiring

Teflon® coated, 18AWG, 600V, 250° C rated and certified to UL 1659 standard.

Hardware

Tamper-resistant, stainless steel hardware. 360HD™ hardware is additionally black oxide treated for additional corrosion resistance.

Finish

StarGuard®, our exclusive RoHS compliant, 15 stage chromate-free process cleans and conversion coats aluminum components prior to application of Class 'A' TGIC polyester powder coating.

Warranty

5 year limited warranty.

Certification and Listing

UL tested to IESNA LM-79. UL Listed. Certified to CAN/CSA/ANSI Standards. RoHS compliant. Suitable for indoor or outdoor use. Suitable for use in wet locations. Additionally suitable for installation within 4' of the ground. IP66 Rated. Made in USA.



Teflon is a registered trademark of DuPont Corporation.
Energy Star is a registered trademark of the United States Environmental Protection Agency.

lumenpulse™

1220 Marie-Victorin Blvd., Longueuil, QC J4G 2H9 CA T 1.877.937.3003 | 514.937.3003 F 514.937.6289
info@lumenpulse.com www.lumenpulsegroup.com

Lumenpulse Group Inc. reserves the right to make changes to this product at any time without prior notice and such modification shall be effective immediately
2017.11.28 copyright © 2017 Lumenpulse Group Inc.
MG - R38

B-K LIGHTING

40429 Brickyard Drive • Madera, CA 93636 • USA
559.438.5800 • FAX 559.438.5900
www.bklighting.com • info@bklighting.com

RELEASED
11-7-17

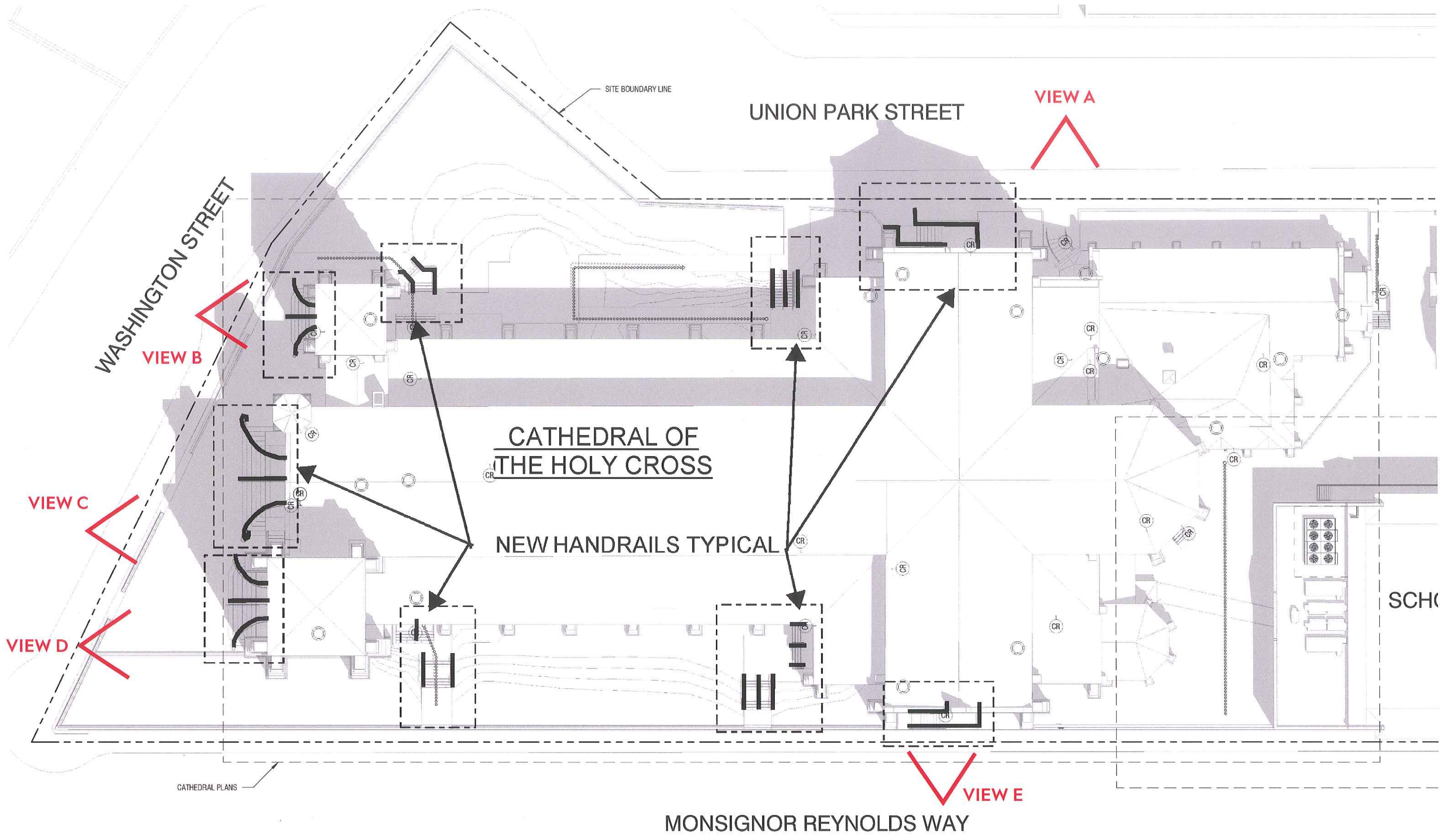
DRAWING NUMBER
SUB001113

360HD Patent is covered in whole or in part by U.S. Patent No. 6,161,948

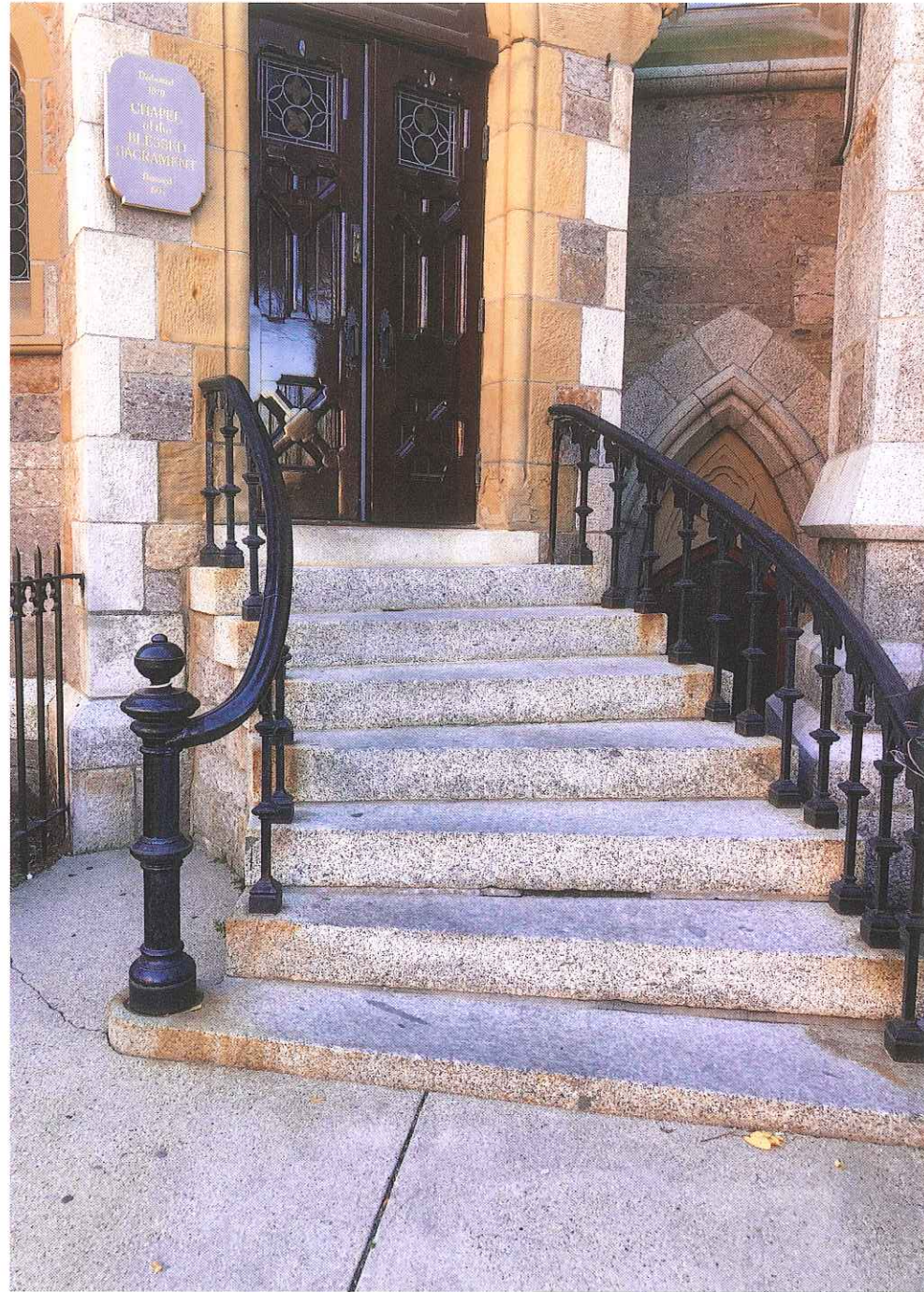
4

Replacement or Addition of New Handrails at Existing Stairs

Site Plan



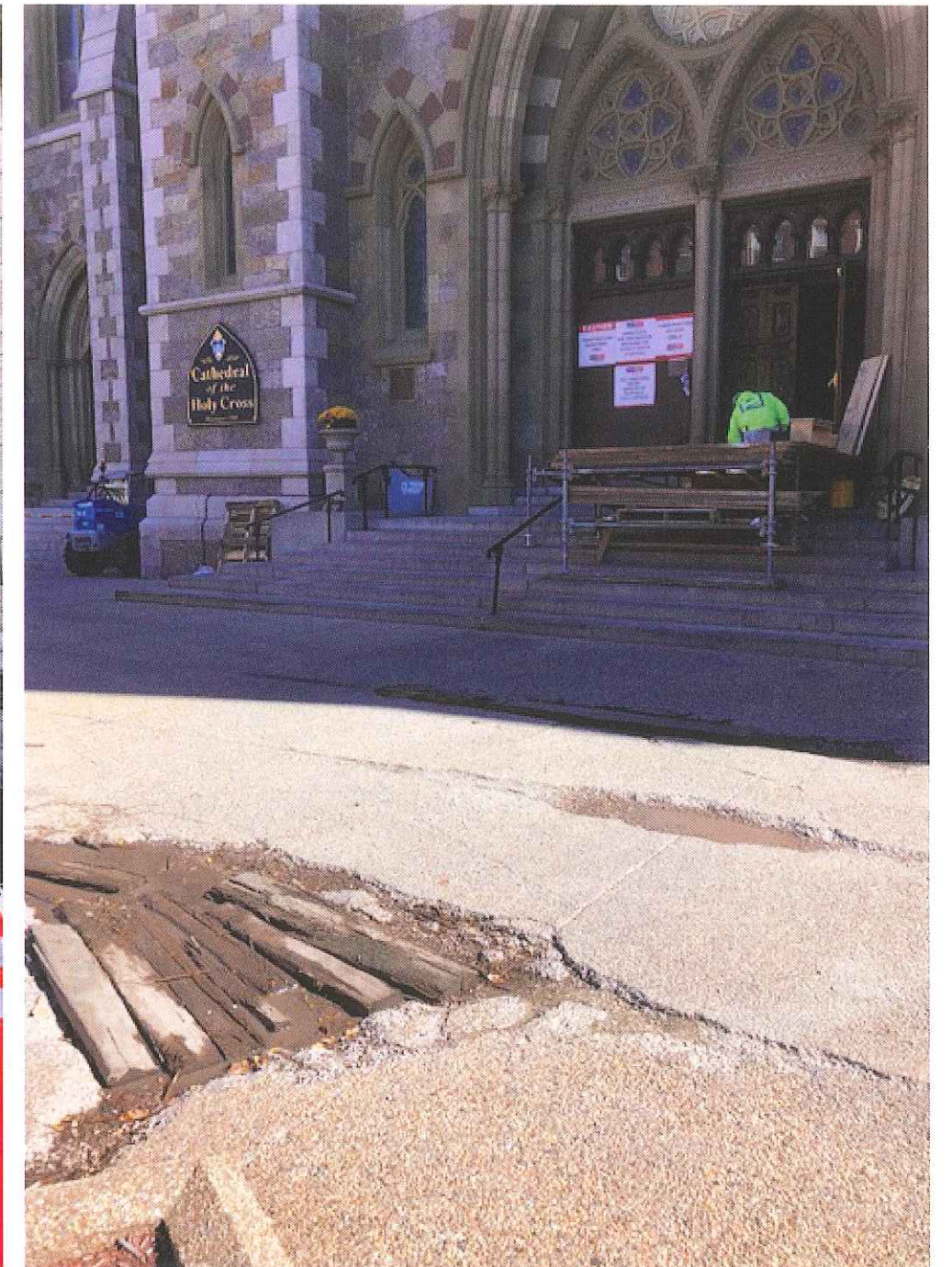
Existing Conditions



VIEW A

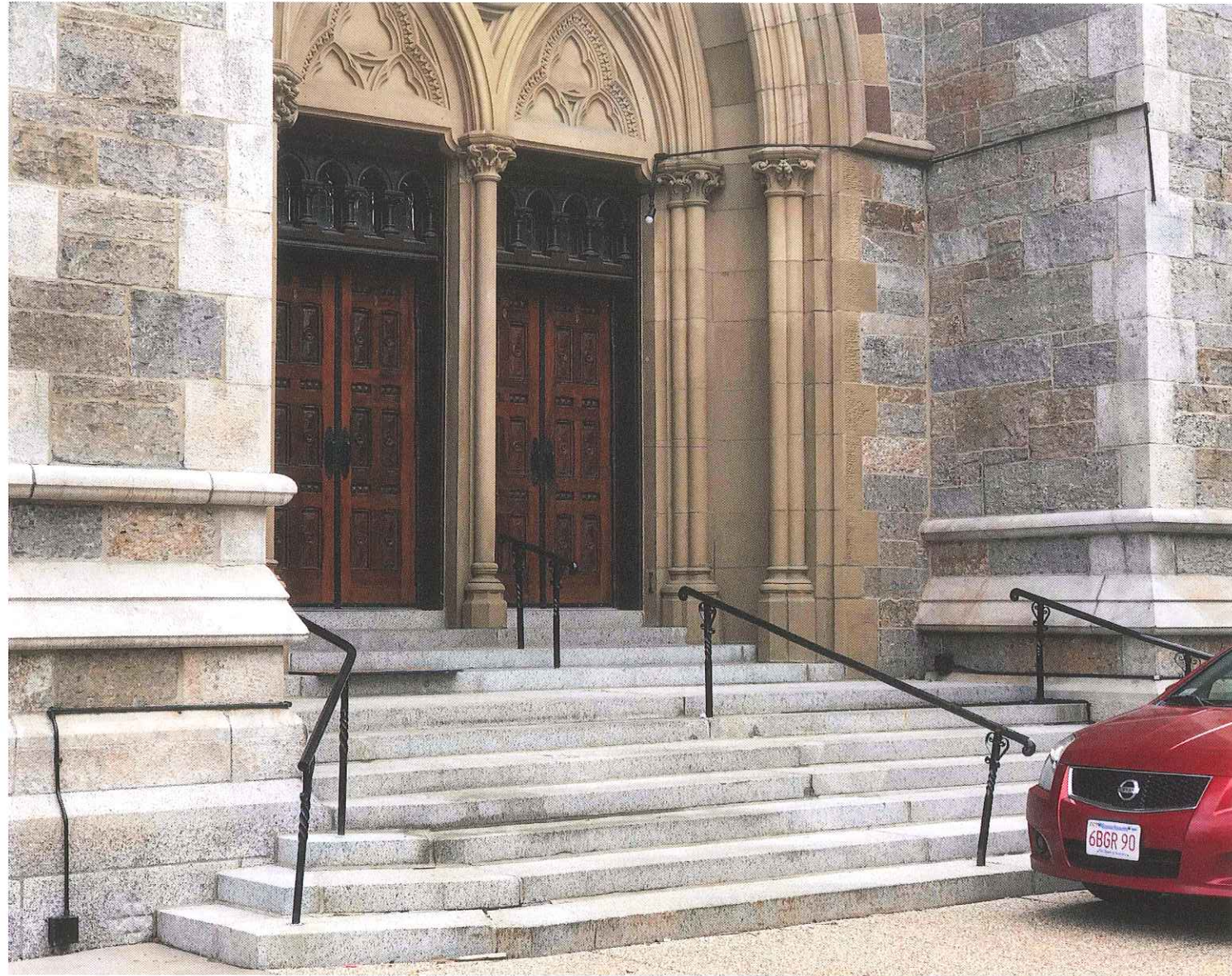


VIEW B



VIEW C

Existing Conditions



VIEW D

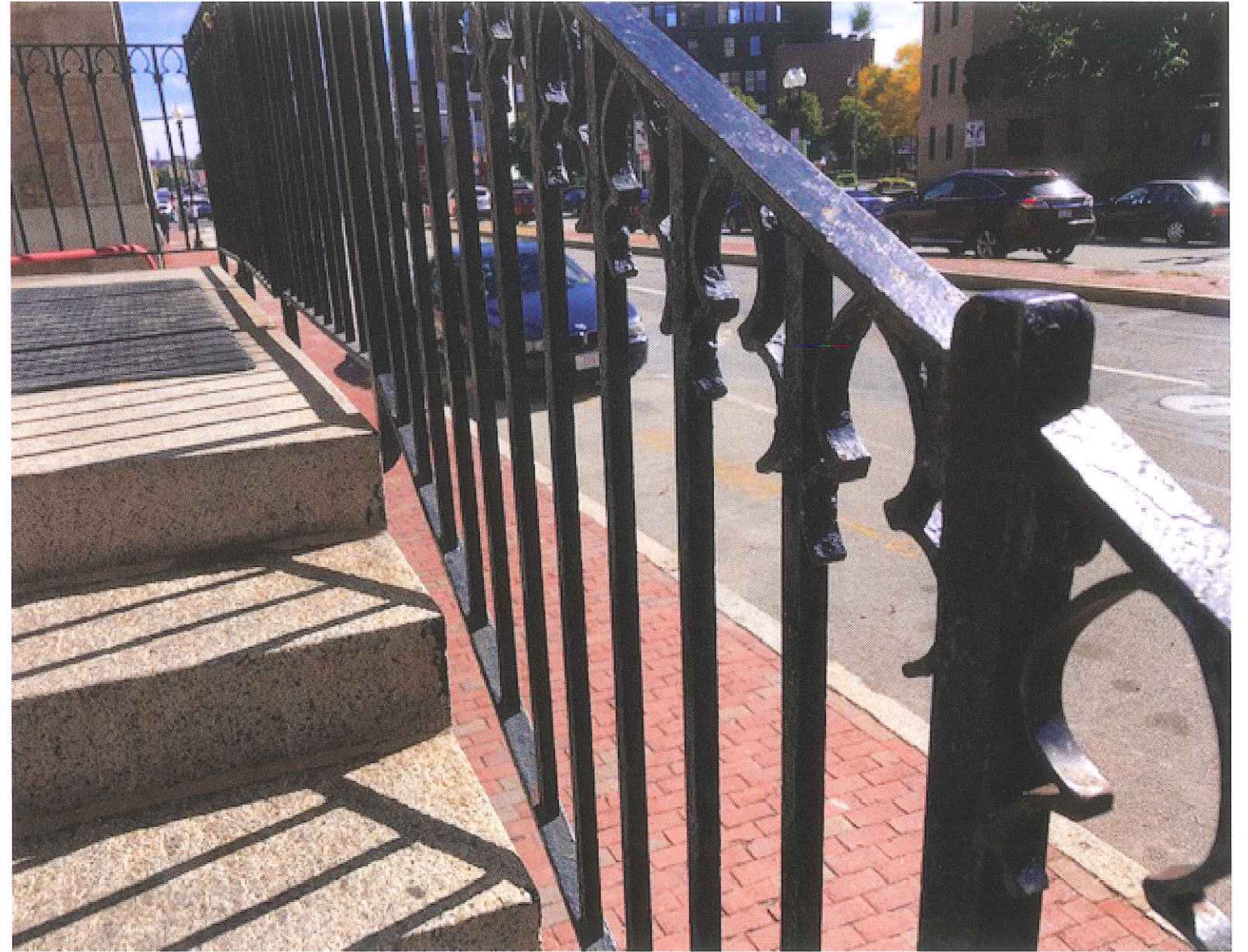


VIEW E

Existing Conditions - Details



VIEW A - DETAIL



VIEW E - DETAIL

Axon



LEGEND

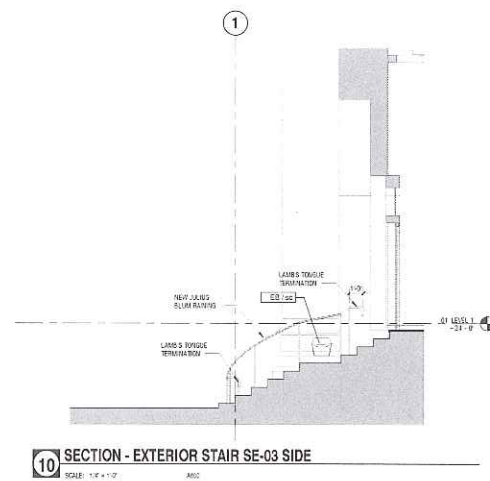
- 1 STONE PAVING
- 2 FACADE LIGHTING
- 3 BRICK SOLDIER AND SAILOR COURSE
- 4 RESET BRICK SIDEWALK

WASHINGTON STREET PLAZA CONCEPT

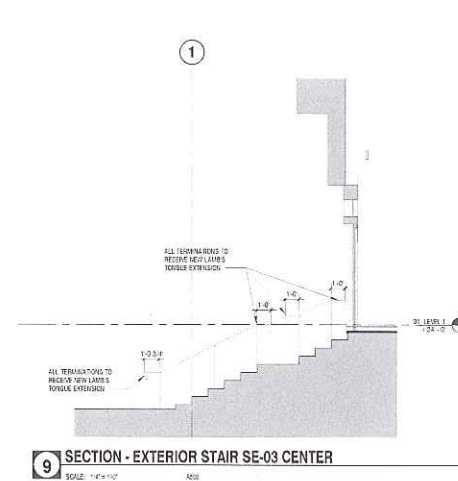
CATHEDRAL OF THE HOLY CROSS



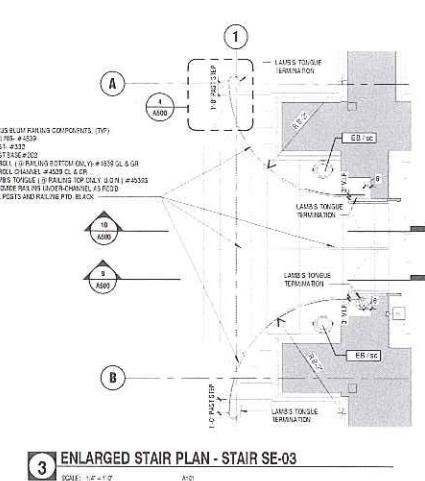
Handrail Details



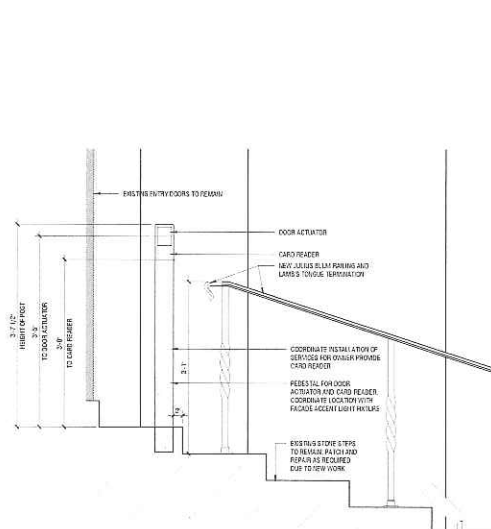
10 SECTION - EXTERIOR STAIR SE-03 SIDE
SCALE: 1/4" = 1'-0"



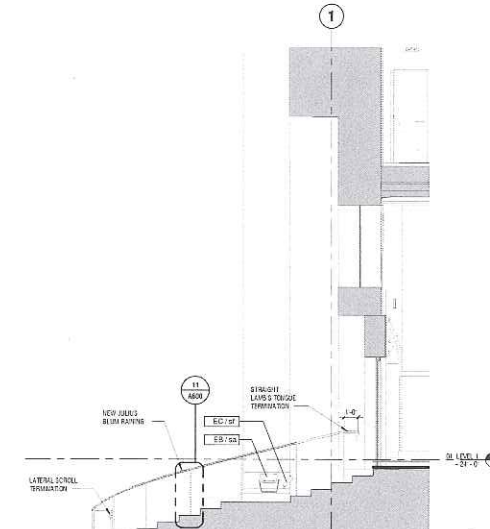
9 SECTION - EXTERIOR STAIR SE-03 CENTER
SCALE: 1/4" = 1'-0"



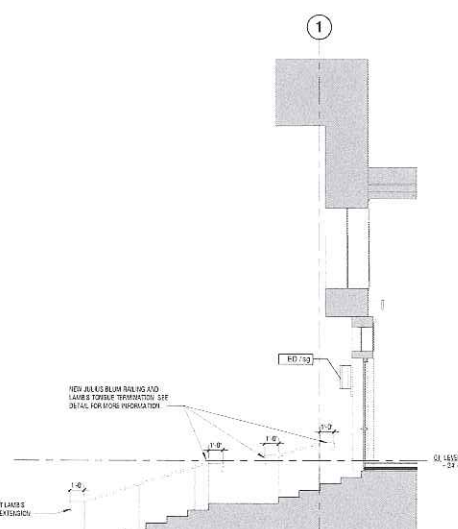
3 ENLARGED STAIR PLAN - STAIR SE-03
SCALE: 1/4" = 1'-0"



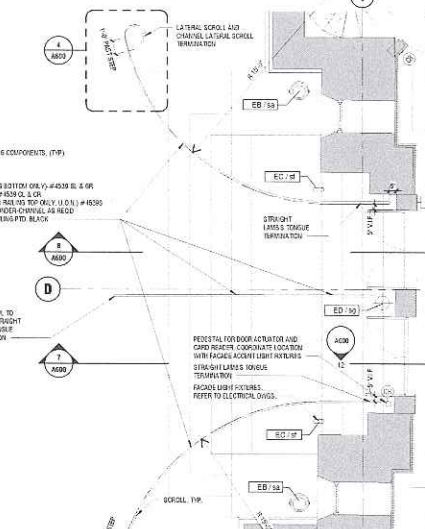
12 Elevation 7 - a
SCALE: 1/4" = 1'-0"



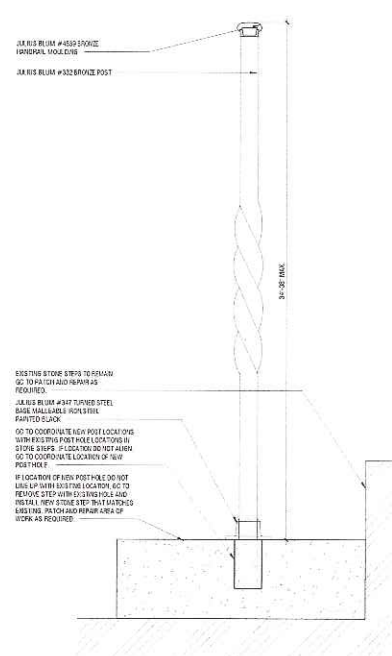
8 SECTION - EXTERIOR STAIR SE-02 SIDE
SCALE: 1/4" = 1'-0"



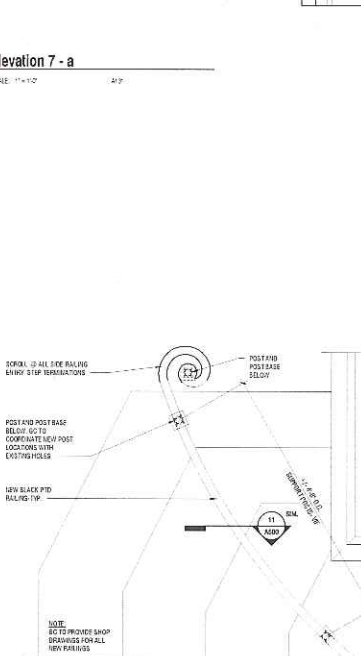
7 SECTION - EXTERIOR STAIR SE-02 CENTER
SCALE: 1/4" = 1'-0"



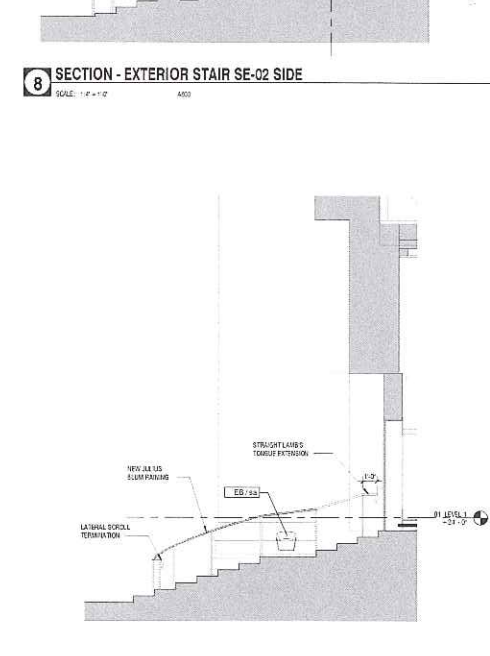
2 ENLARGED STAIR PLAN - STAIR SE-02
SCALE: 1/4" = 1'-0"



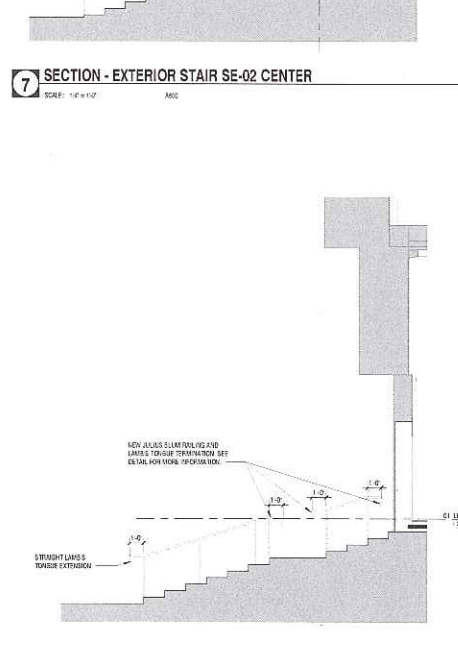
11 SECTION ELEVATION - HANDRAIL AT EXTERIOR STAIR SE-02 SIDE
SCALE: 1/4" = 1'-0"



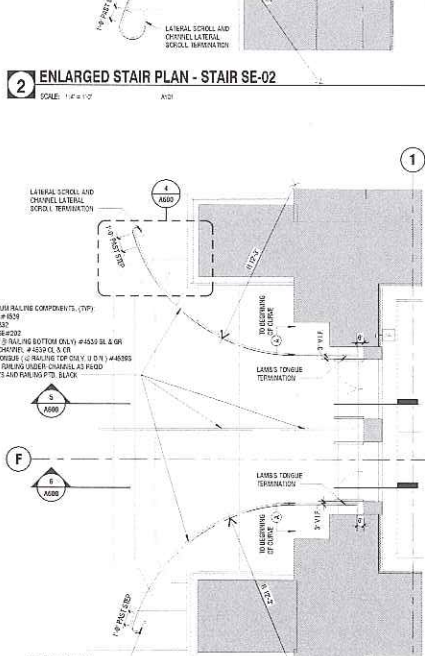
4 ENTRY STEPS RAILING PLAN DETAIL
SCALE: 1/4" = 1'-0"



5 SECTION - EXTERIOR STAIR SE-01 SIDE
SCALE: 1/4" = 1'-0"



6 SECTION - EXTERIOR STAIR SE-01 CENTER
SCALE: 1/4" = 1'-0"



1 ENLARGED STAIR PLAN - STAIR SE-01
SCALE: 1/4" = 1'-0"

CONFIDENTIAL AND PROPRIETARY - DO NOT COPY OR DISTRIBUTE

ELKUS MANFREDI ARCHITECTS
Address: 25 DRYDOCK AVENUE
BOSTON MASSACHUSETTS 02210
(t) 617 476 1300

Owner
The Roman Catholic Archbishop of Boston, a corporate entity
66 Brookline Drive
Brookline, MA 02154
617.254.0100
Program Manager
Suzanne Cunningham
65 Allerton Street
Boston, MA 02119
617.455.5500

Civil Engineer
V&B
281 High Street, 10th Floor
Boston, MA 02110
617.733.7777
Structural Engineer
M&M
101 Federal Street, 11th Floor
Boston, MA 02110
617.737.0040

Mechanical, Electrical, Plumbing, & Fire Protection
V&B
69 Black Falcon Ave, Suite 210
Boston, MA 02210
617.210.1800
Lighting Designer
H&L
10 East 38th Street, 5th Floor
New York, NY 10016
212.269.1600

Video Consultant
Catholic TV
P.O. Box 9108
Watertown, MA 02471
617.903.0200
Appointment Designer
ACONTECH
1210 Menden Waterbury Road
Plainville, CT 06069
860.333.2000

Code Consultant
Jensen Hughes
1401 Worcester Road, Suite 801
Framingham, MA 01701
508.532.6900
Acoustic Designer
ACONTECH
33 Moulton Street
Cambridge, MA 02138
617.499.8600

PROJECT NUMBER:	17127
DATE:	4.17.2018
SCALE:	As Indicated
REVISIONS:	

Holy Cross Cathedral 1400 Washington St Boston, MA 02118 FOR PERMIT	
DRAWING NAME:	DRAWING NUMBER:
FRONT EXTERIOR STAIRS	A600